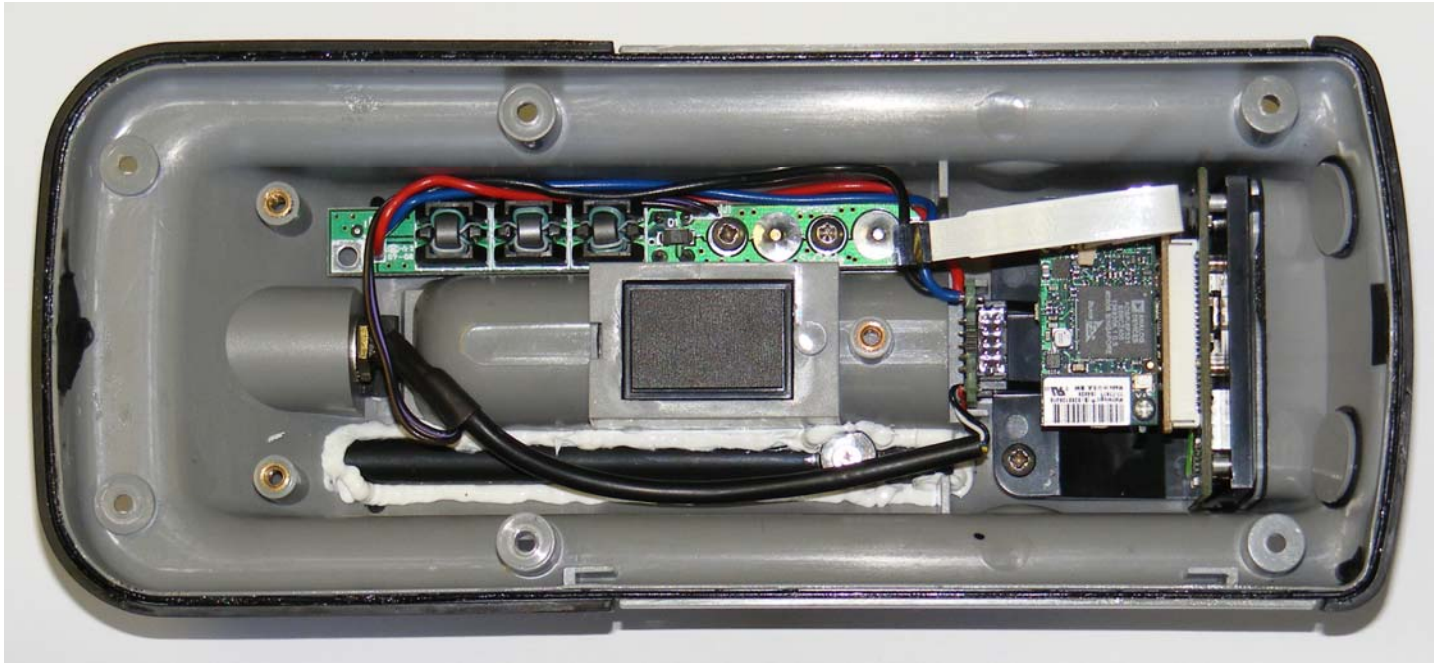


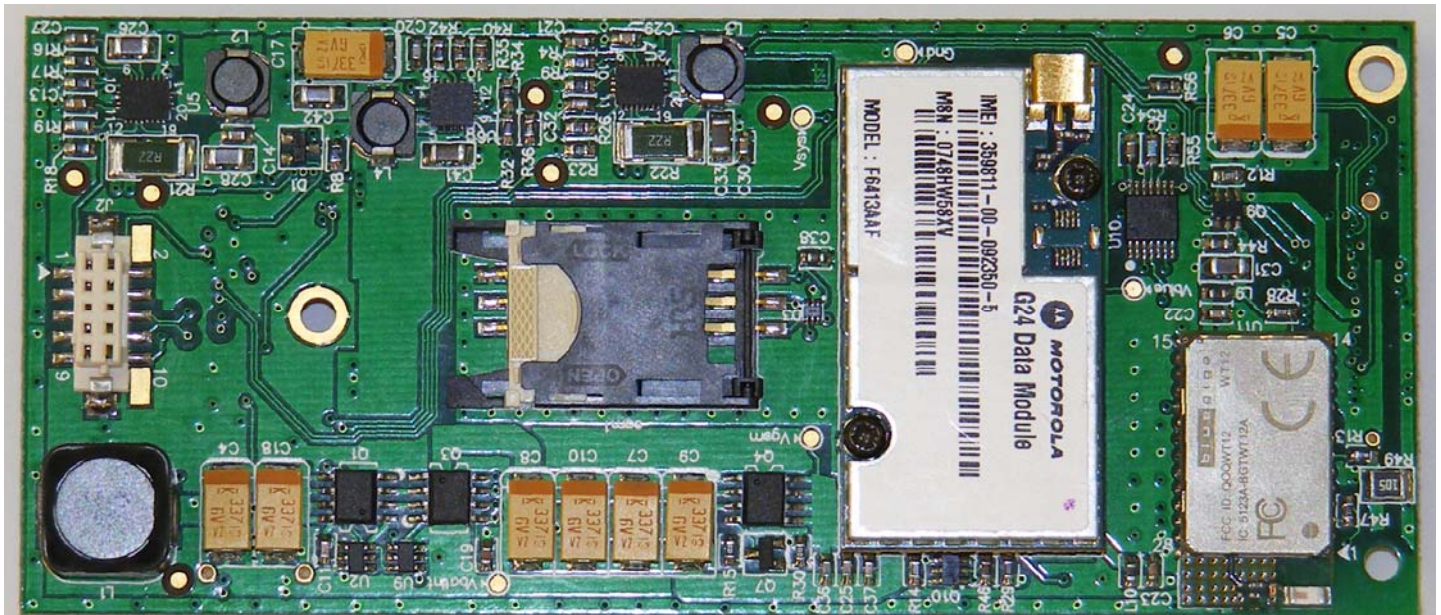
iDL3ID Internal Photographs

Bottom Enclosure

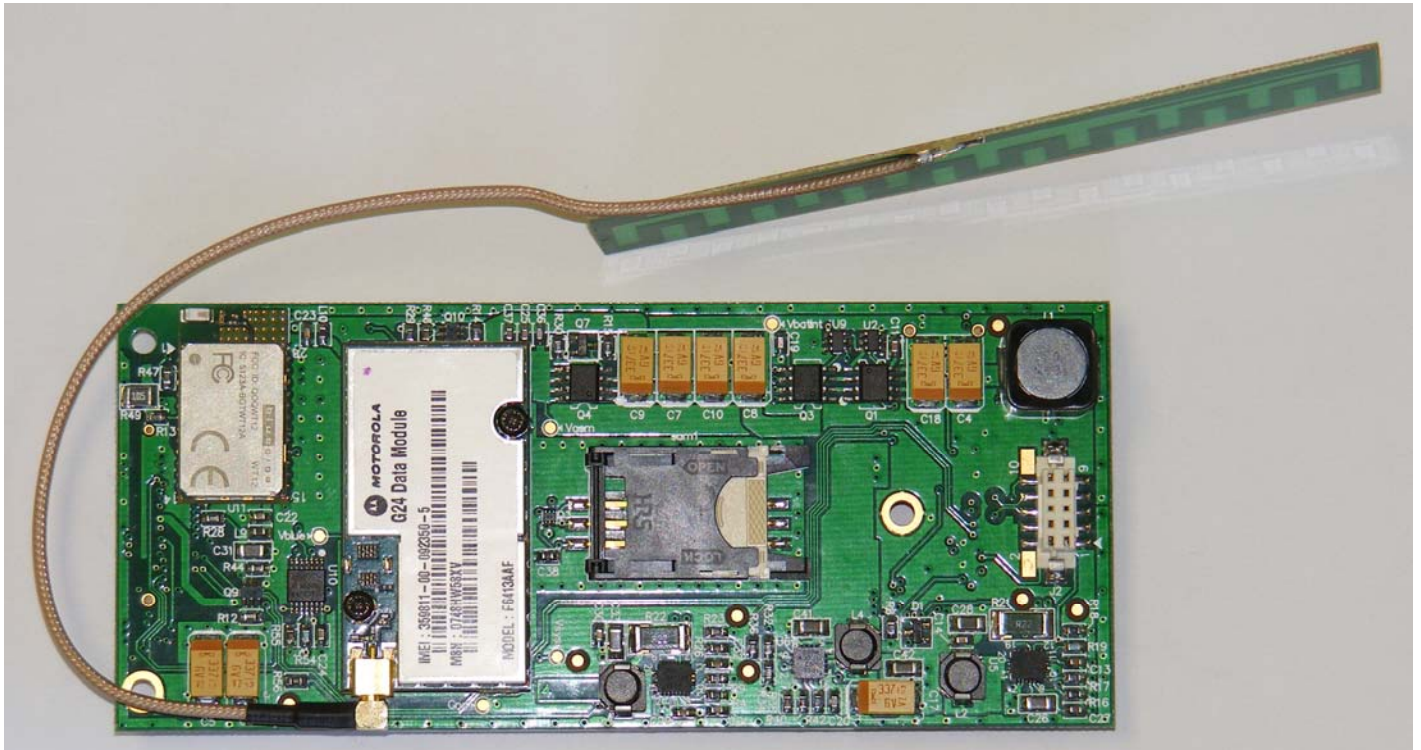


iDL3ID Internal Photographs

INF Board (Bottom Side) Showing GSM & Bluetooth Modules. Bluetooth module is permanently disabled.

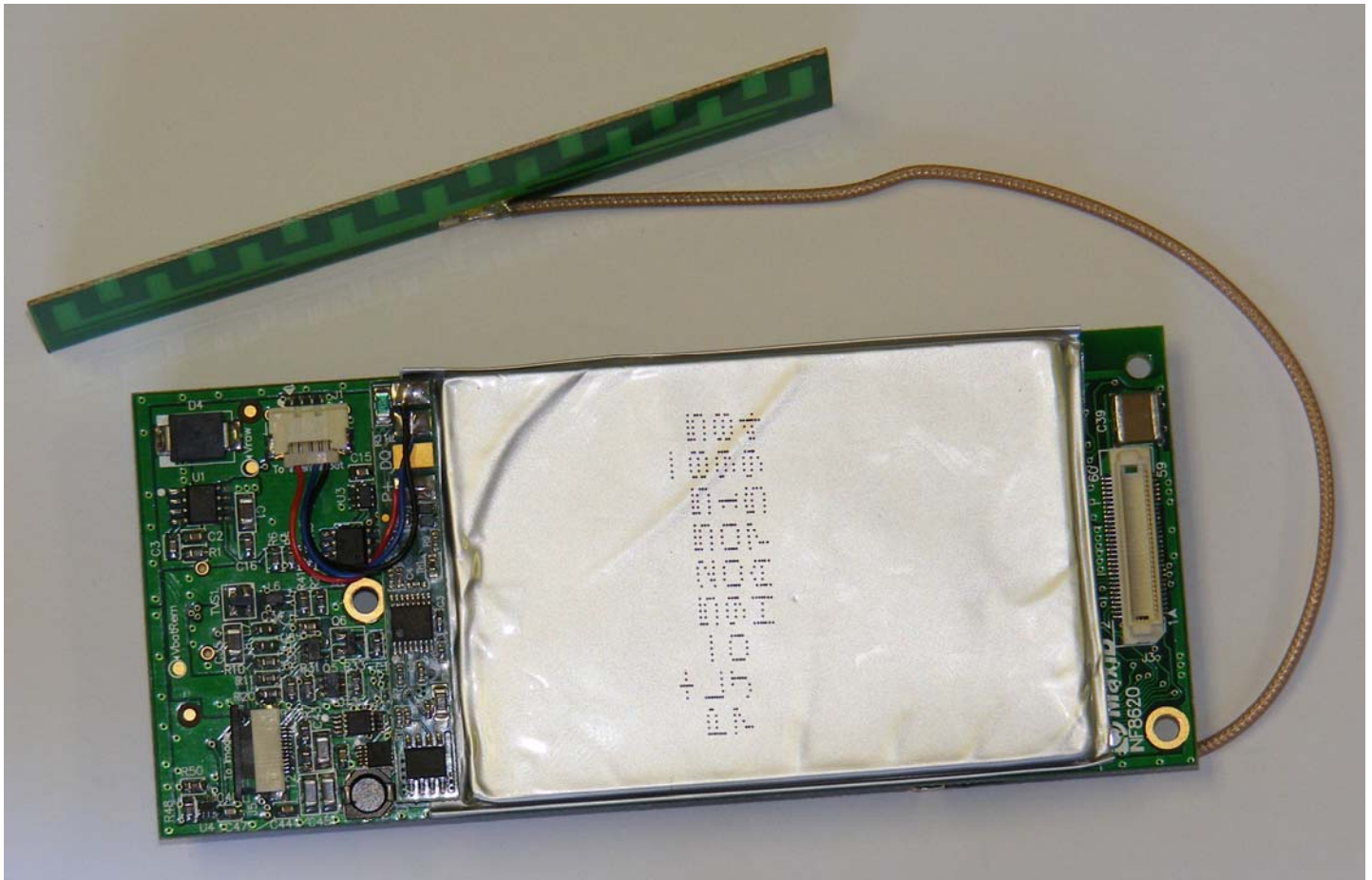


INF Board (Bottom Side) with GSM Antenna Connected



iDL3ID Internal Photographs

INF Board (Top Side) with GSM Antenna Connected

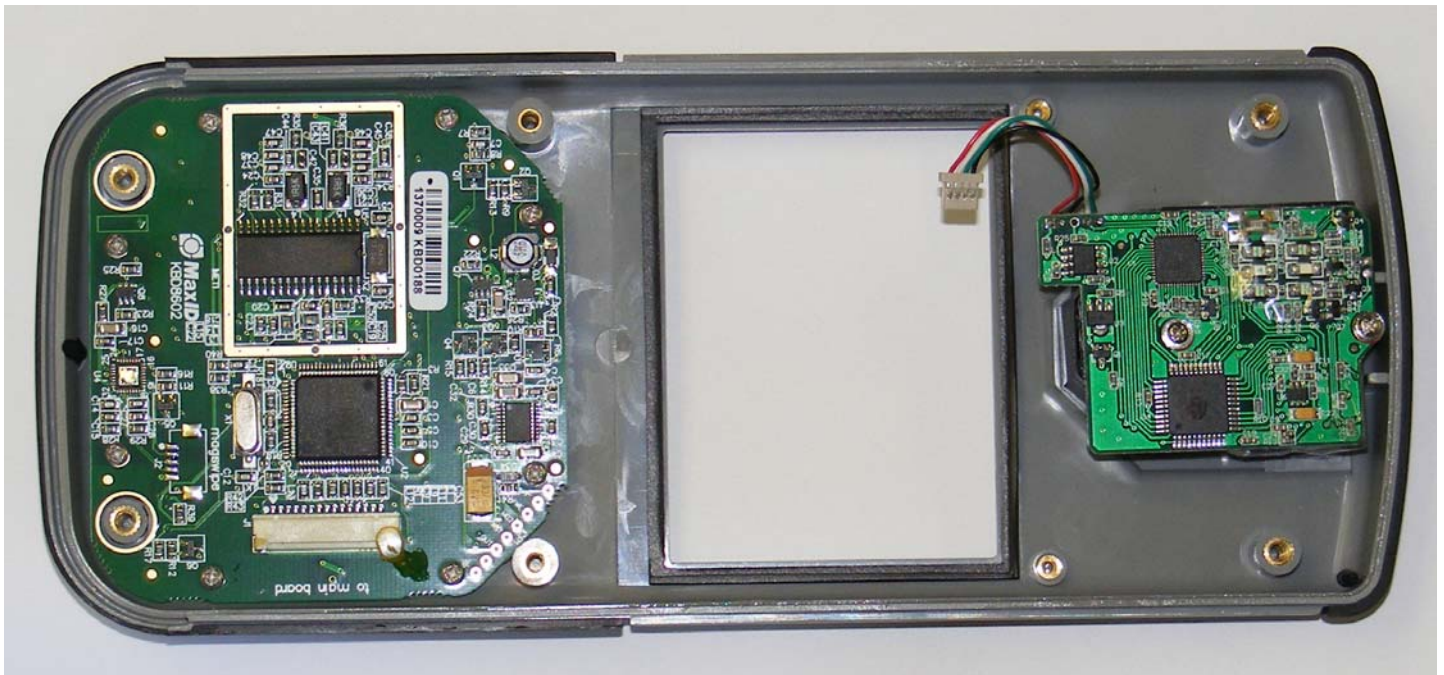


iDL3ID Internal Photographs

INF Board shown fitted into bottom enclosure



Top Enclosure

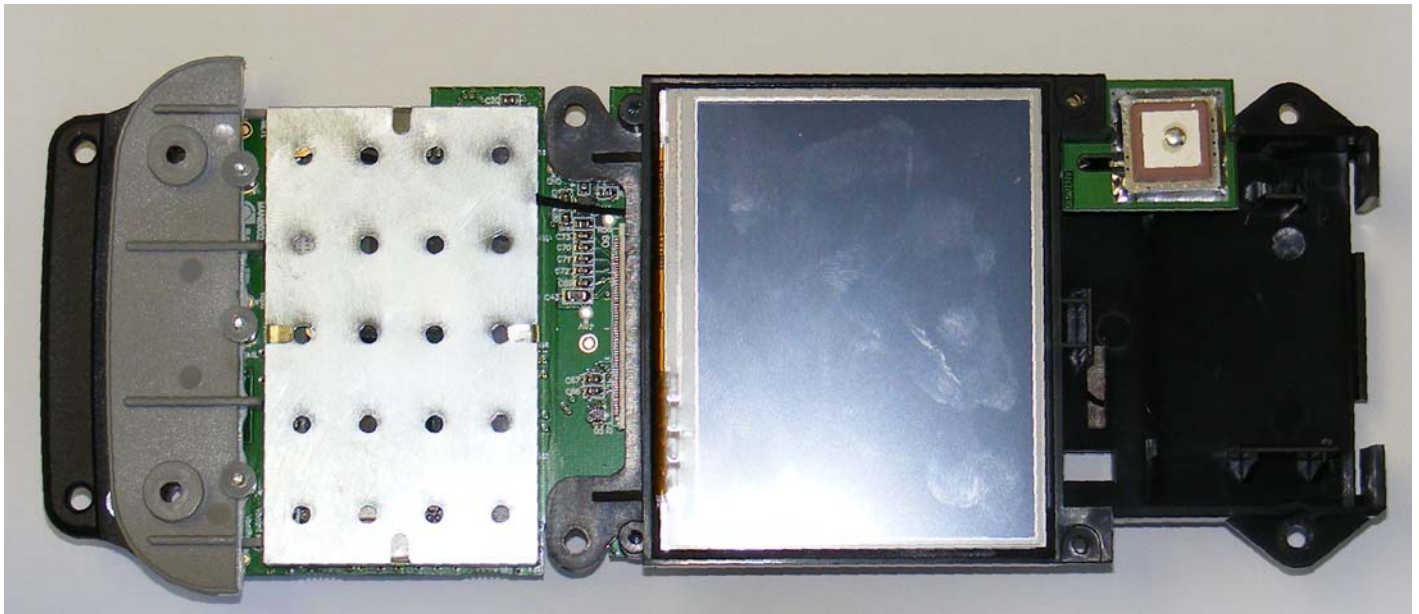


iDL3ID Internal Photographs

Processor & Wifi Module shown with shield removed, fitted to carrier board, & removed from top enclosure. Also shown is GPS antenna.



Processor & Wifi Module shown with shield in place, fitted to carrier board, & removed from top enclosure. Also shown is GPS antenna.

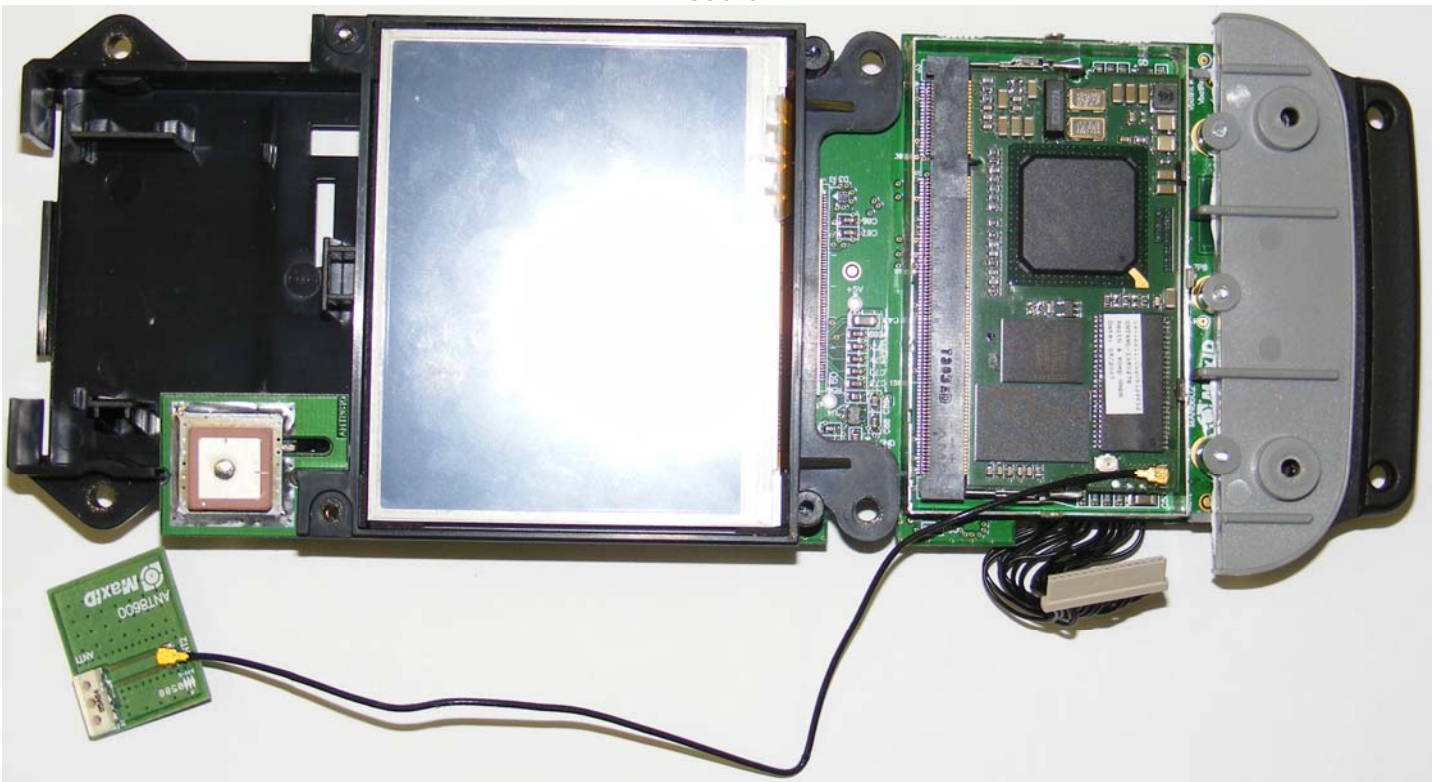


iDL3ID Internal Photographs

Top Enclosure showing WiFi antenna and cable



Carrier board removed from top enclosure showing WiFi antenna, cable, & connection to processor / WiFi module



iDL3ID Internal Photographs

Keyboard PCB showing loop antenna for 13.56MHz inductively coupled RFID

