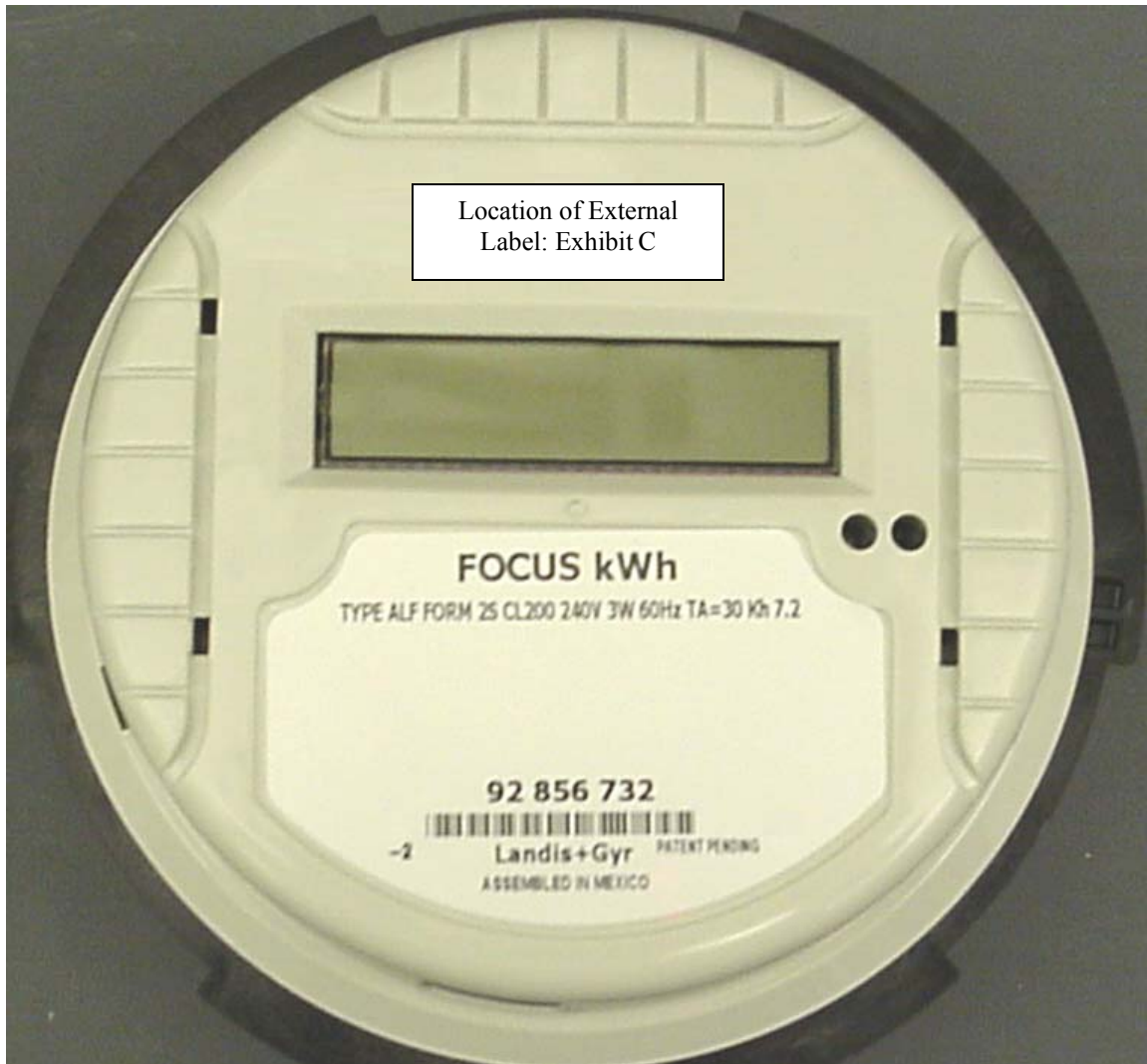


Front of Meter



We do not have a final meter yet but the end product will look much like the one in the above photo. The end use will not be able to see our AirPoint module, the only visual clue that there is an AirPoint in the meter will be the label on the meter shell stating the unit's serial number and FCC ID of the AirPoint module located inside. (Exhibit C- Exterior Label)

The other label on the meter shell is produced by Landis + Gyr, and is a standard Watt-Hour meter label stating such things as: Meter ID, Class, Voltage, etc.