

To: 李志刚

## RF Antenna Cable Assembly

### Specification

#### 1. Electrical Properties :

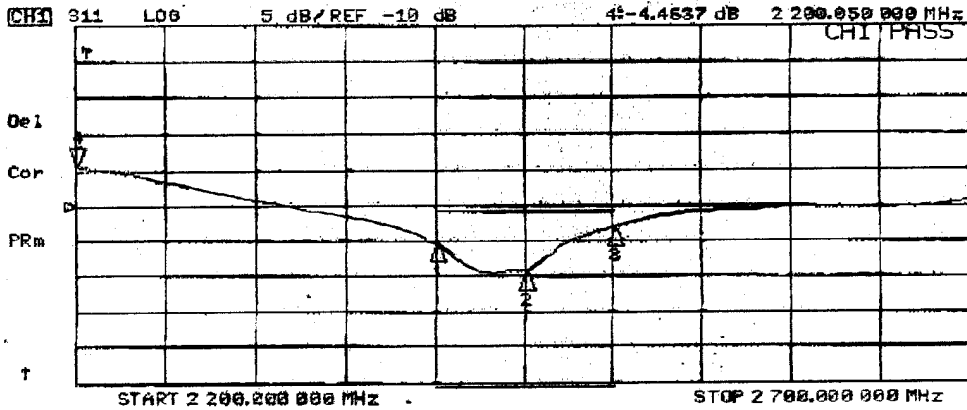
- 1.1 Frequency Rang.....2.4GHz ~ 2.5GHz
- 1.2 Impedance ..... 50  $\Omega$  Nominal
- 1.3 VSWR ..... 1.92 Max.
- 1.4 Return Loss..... -10dB Maximum
- 1.5 Electrical Wave..... 1/2  $\lambda$  Dipole
- 1.6 Gain..... 1.8 dBi
- 1.7 Admitted Power..... 1W

#### 2. Physical Properties :

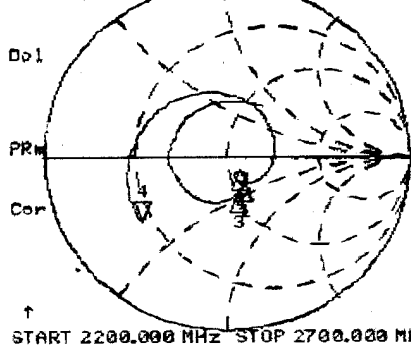
- 2.1 Cable.....RG-178 Coaxial Cable
- 2.2 Antenna Body.....TPE
- 2.3 1. Antenna Base..... PC
- 2.4 Operating Temp. .... -20 $^{\circ}$ C ~ +65 $^{\circ}$ C
- 2.5 Storage Temp. .... -30 $^{\circ}$ C ~ +75 $^{\circ}$ C
- 2.6 Color ..... Black
- 2.7 Connector ..... MHF Plug

KF Antenna Assembly  
P/No.C636-510012-A Spec:2.4~2.5GHz

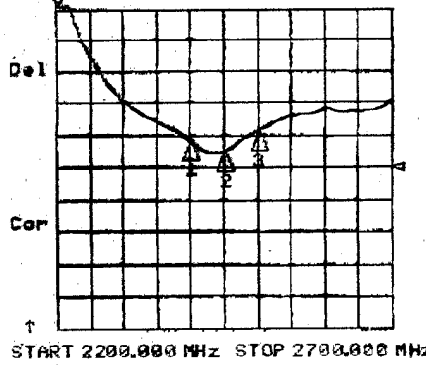
28 Jun 2005 09:15:07



CH2 S11 1 U FS  
 $\angle$  14.005  $\angle$  -16.232  $\angle$  4.4430 pF  
2 200.050 000 MHz



CH4 SWR 500 m / REF 1  
S11 4: 3.9771 2 200.050 000 MHz





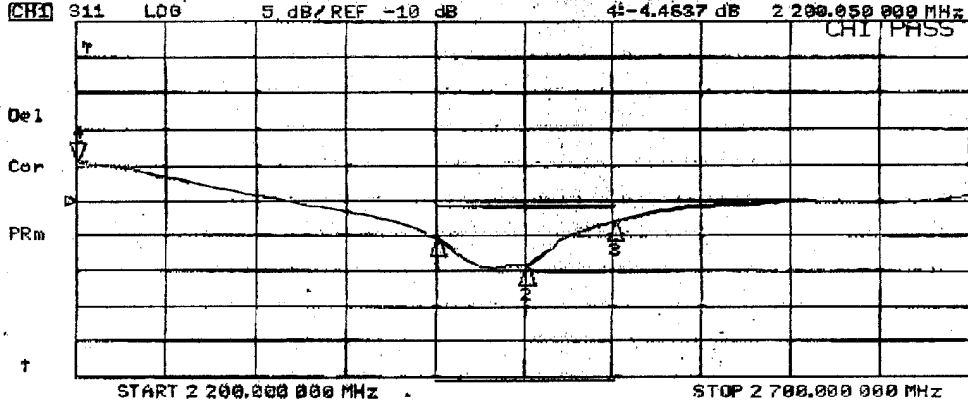
# 台樺電業製品廠

## TAI HWA ELECTRONIC FACTORY

### RF Antenna Assembly

P/No.C636-510012-A Spec:2.4~2.5GHz

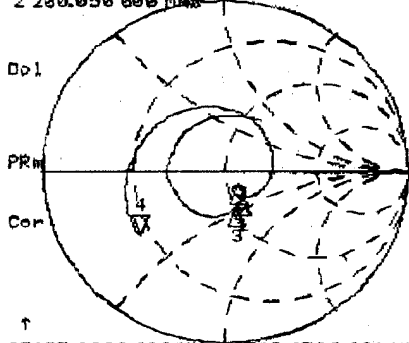
28 Jun 2005 09:15:07



CH1 Markers

- 1: -15.371 dB  
2.40000 GHz
- 2: -19.625 dB  
2.45000 GHz
- 3: -13.126 dB  
2.50000 GHz

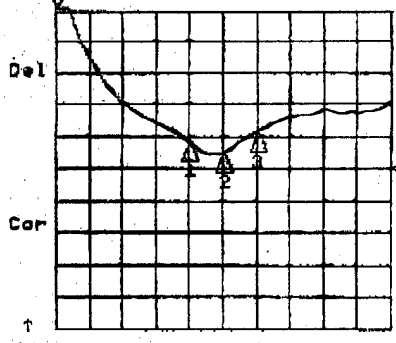
CH2 S11 1 U FS  
4: 14.005  $\Omega$  -16.232  $\Omega$  4.4430 pF  
2 200.050 000 MHz



CH2 Markers

- 1: 56.121  $\Omega$   
-17.268  $\Omega$   
2.40000 GHz
- 2: 35.729  $\Omega$   
-5.4883  $\Omega$   
2.45000 GHz
- 3: 58.439  $\Omega$   
-22.715  $\Omega$   
2.50000 GHz

CH4 SWR 500 m / REF 1  
S11 4 4: 3.9771 2 200.050 000 MHz



CH4 Markers

- 1: 1.4108  
2.40000 GHz
- 2: 1.2332  
2.45000 GHz
- 3: 1.5562  
2.50000 GHz

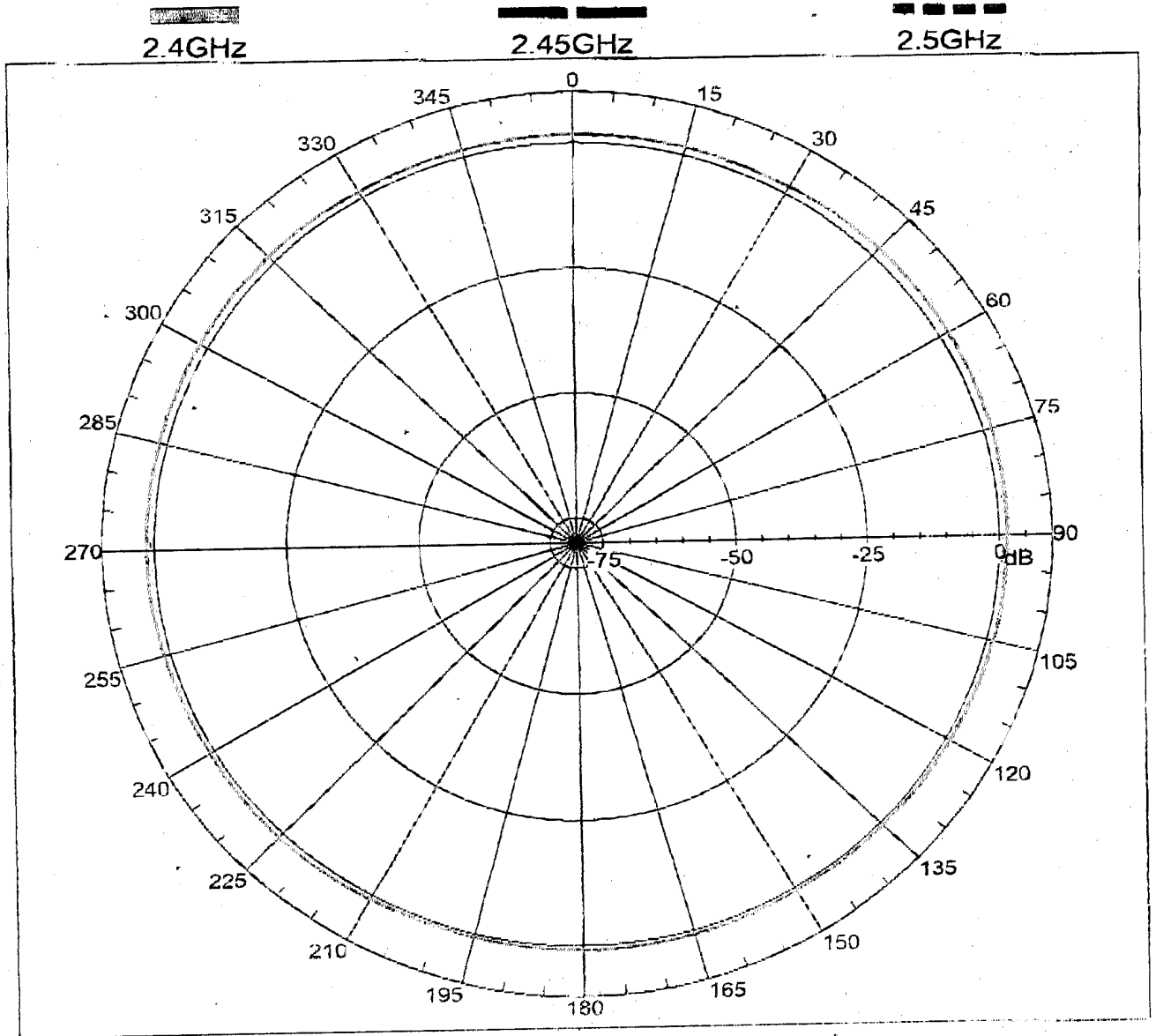


華裕實業股份有限公司  
WHA YU INDUSTRIAL CO., LTD

RF Antenna Assembly

SPEC : 2.4 ~ 2.5GHz

### Far-field amplitude of antenna-5-h.nsi





華裕實業股份有限公司

WHA YU INDUSTRIAL CO., LTD

RF Antenna Assembly

SPEC : 2.4 ~ 2.5GHz

### Far-field amplitude of antenna-6-c.nsi

