

SAR MEASUREMENT REPORT

Project Name:ccs

25/9/2006

MEASUREMENT 1

Tp-link b mode low channel configuration1

Spacing between EUT and phantom - 1.5 cm

Type: Phone measurement (Complete)

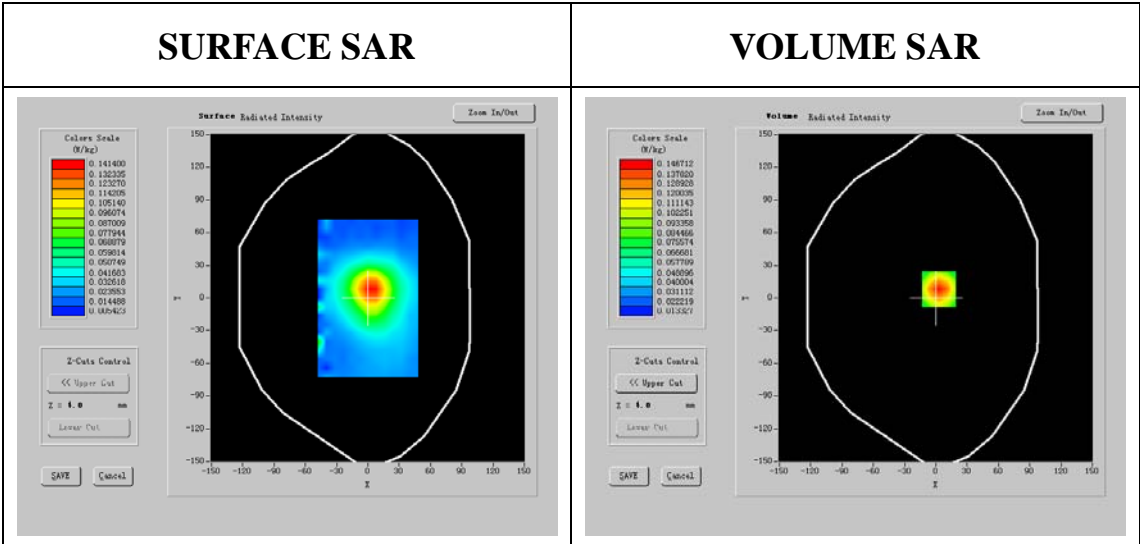
Date of measurement: 23/9/2006

Time of measurement: 14 minutes 32 seconds

Mobile Phone IMEI number: --

SAR Measurement Results

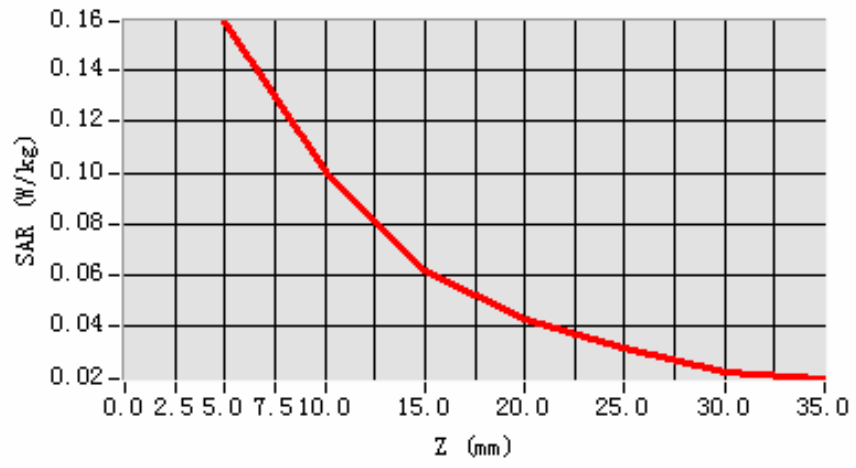
Frequency (MHz)	2412.000000
Relative permittivity (real part)	52.675999
Relative permittivity (imaginary part)	14.487900
Conductivity (S/m)	1.941379
Variation (%)	0.650000



SAR 10g (W/Kg)	0.088973
SAR 1g (W/Kg)	0.149679

Z Axis Scan

SAR, Z Axis Scan (X = 3, Y = 8)



MEASUREMENT 2

Tp-link b mode low channel configuration2

Spacing between host device and phantom-0cm

Type: Phone measurement (Complete)

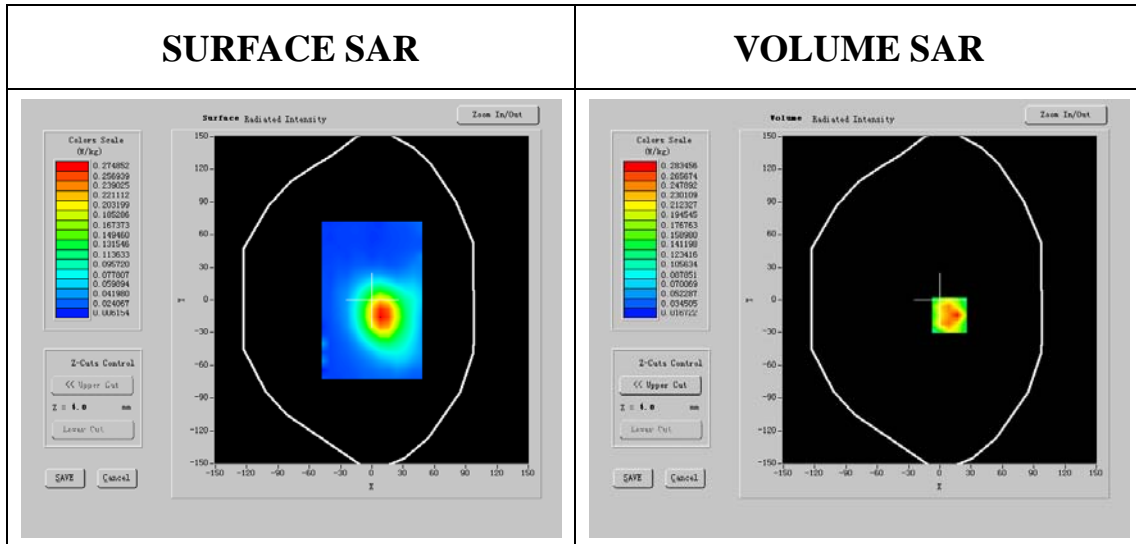
Date of measurement: 23/9/2006

Time of measurement: 14 minutes 19 seconds

Mobile Phone IMEI number: --

SAR Measurement Results

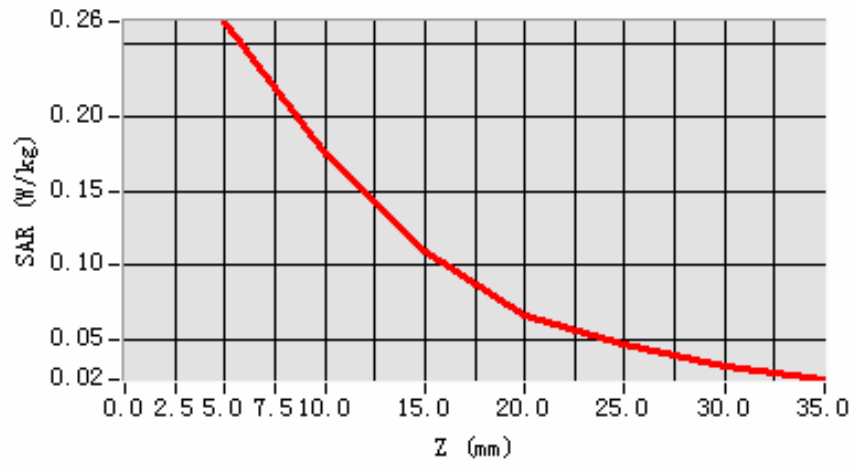
Frequency (MHz)	2412.000000
Relative permittivity (real part)	52.675999
Relative permittivity (imaginary part)	14.487900
Conductivity (S/m)	1.941379
Variation (%)	-0.150000



<p>SAR 10g (W/Kg)</p>	<p>0.160082</p>
<p>SAR 1g (W/Kg)</p>	<p>0.280992</p>

Z Axis Scan

SAR, Z Axis Scan (X = 9, Y = -14)



MEASUREMENT 3

Tp-link g mode low channel configuration2

Spacing between host device and phantom-0cm

Type: Phone measurement (Complete)

Date of measurement: 23/9/2006

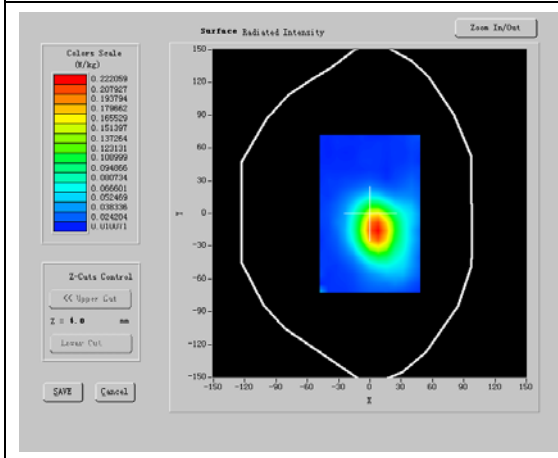
Time of measurement: 14 minutes 26 seconds

Mobile Phone IMEI number: --

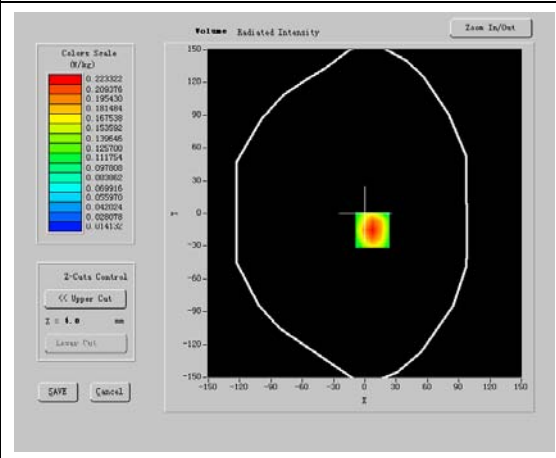
SAR Measurement Results

Frequency (MHz)	2412.000000
Relative permittivity (real part)	52.675999
Relative permittivity (imaginary part)	14.487900
Conductivity (S/m)	1.941379
Variation (%)	-1.060000

SURFACE SAR



VOLUME SAR



SAR 10g (W/Kg)

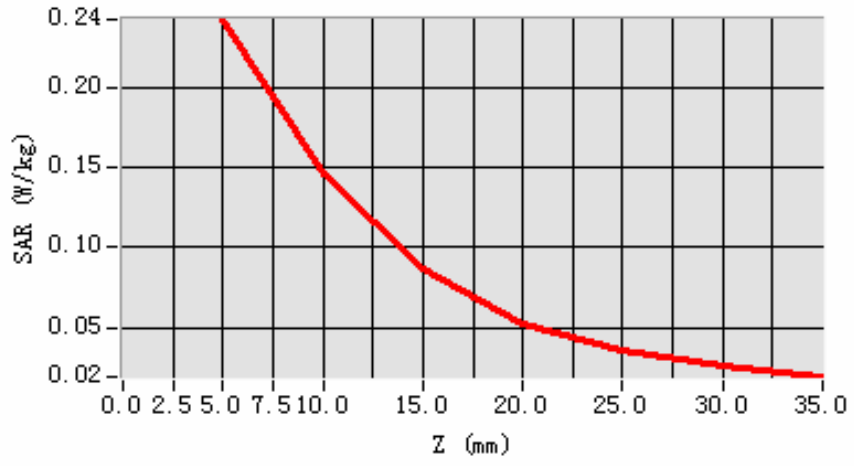
0.132281

SAR 1g (W/Kg)

0.227228

Z Axis Scan

SAR, Z Axis Scan (X = 7, Y = -15)



MEASUREMENT 4

Tp-link g mode low channel configuration1

Spacing between EUT and phantom - 1.5 cm

Type: Phone measurement (Complete)

Date of measurement: 23/9/2006

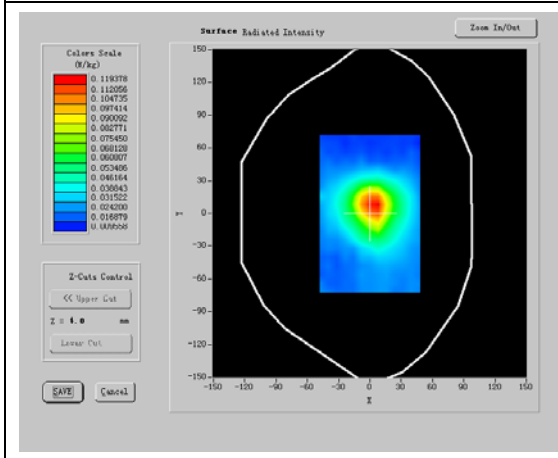
Time of measurement: 15 minutes 0 seconds

Mobile Phone IMEI number: --

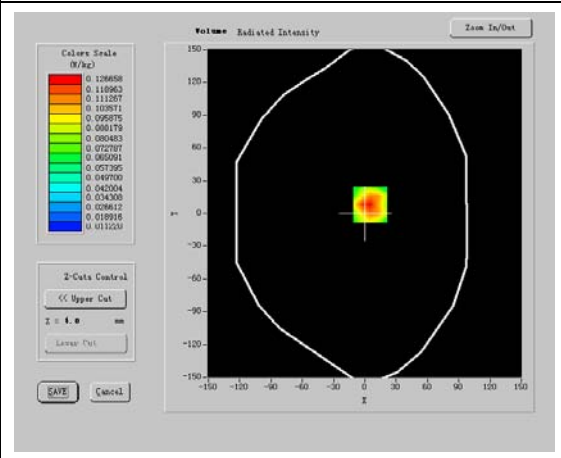
SAR Measurement Results

Frequency (MHz)	2412.000000
Relative permittivity (real part)	52.675999
Relative permittivity (imaginary part)	14.487900
Conductivity (S/m)	1.941379
Variation (%)	-1.030000

SURFACE SAR



VOLUME SAR



SAR 10g (W/Kg)

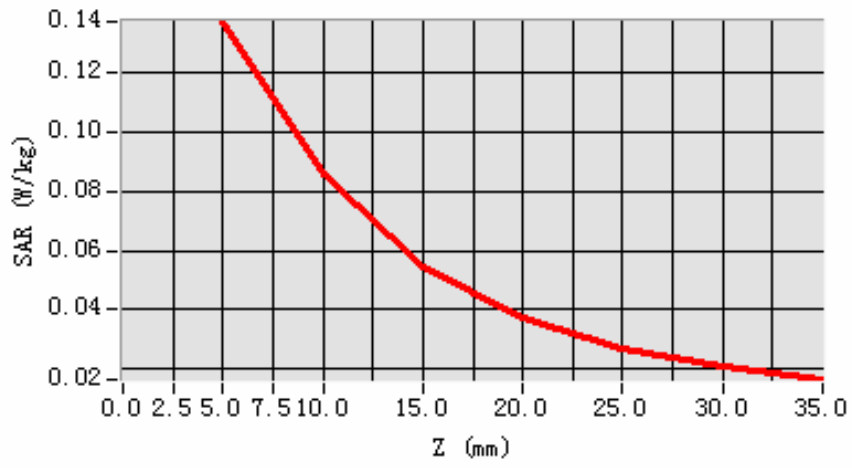
0.078912

SAR 1g (W/Kg)

0.131307

Z Axis Scan

SAR, Z Axis Scan (X = 5, Y = 8)



MEASUREMENT 5

Tp-link g mode middle channel configuration1

Spacing between EUT and phantom - 1.5 cm

Type: Phone measurement (Complete)

Date of measurement: 23/9/2006

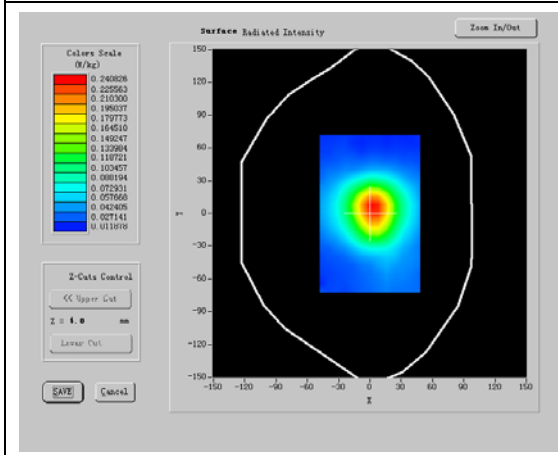
Time of measurement: 14 minutes 33 seconds

Mobile Phone IMEI number: --

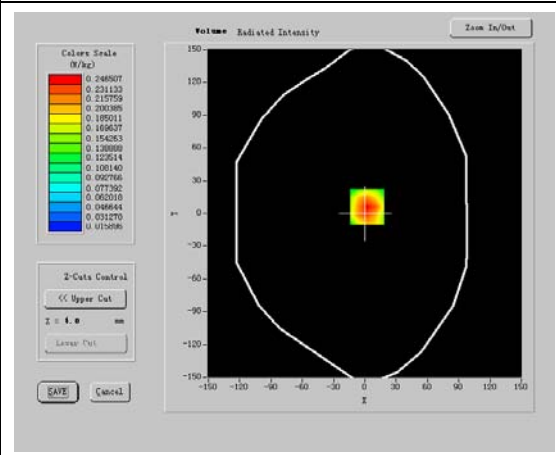
SAR Measurement Results

Frequency (MHz)	2437.000000
Relative permittivity (real part)	52.633999
Relative permittivity (imaginary part)	14.750400
Conductivity (S/m)	1.997040
Variation (%)	-2.810000

SURFACE SAR



VOLUME SAR



SAR 10g (W/Kg)

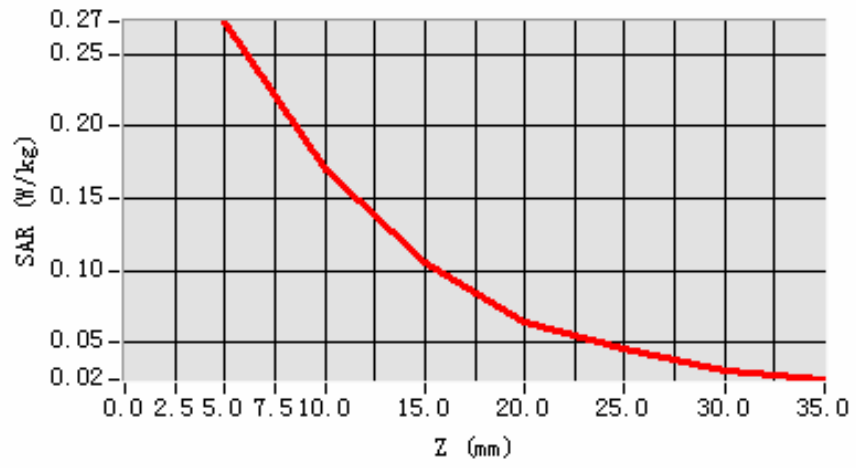
0.154581

SAR 1g (W/Kg)

0.258080

Z Axis Scan

SAR, Z Axis Scan (X = 2, Y = 6)



MEASUREMENT 6

Tp-link b mode middle channel configuration1

Spacing between EUT and phantom - 1.5 cm

Type: Phone measurement (Complete)

Date of measurement: 23/9/2006

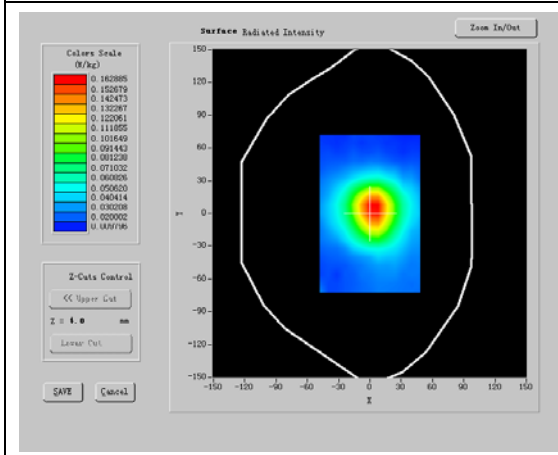
Time of measurement: 14 minutes 26 seconds

Mobile Phone IMEI number: --

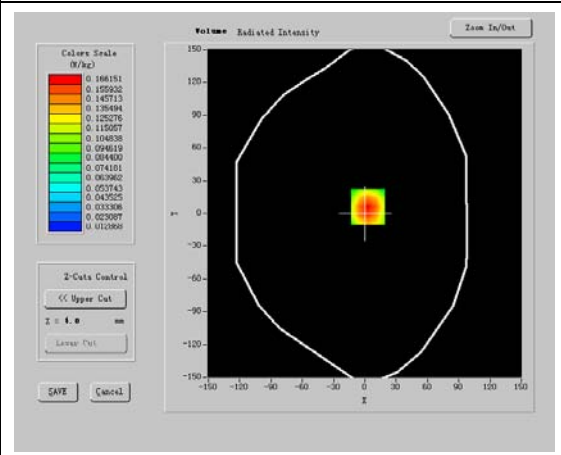
SAR Measurement Results

Frequency (MHz)	2437.000000
Relative permittivity (real part)	38.641998
Relative permittivity (imaginary part)	13.318200
Conductivity (S/m)	1.803136
Variation (%)	-0.390000

SURFACE SAR



VOLUME SAR



SAR 10g (W/Kg)

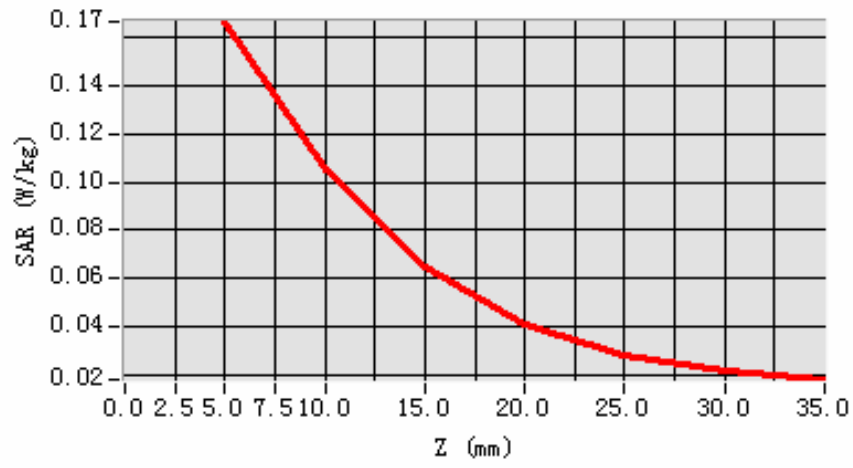
0.096109

SAR 1g (W/Kg)

0.158479

Z Axis Scan

SAR, Z Axis Scan (X = 3, Y = 6)



MEASUREMENT 7

Tp-link b mode middle channel configuration2

Spacing between host device and phantom-0cm

Type: Phone measurement (Complete)

Date of measurement: 23/9/2006

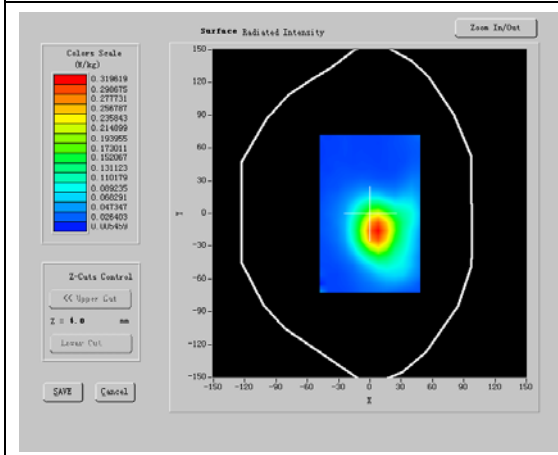
Time of measurement: 14 minutes 30 seconds

Mobile Phone IMEI number: --

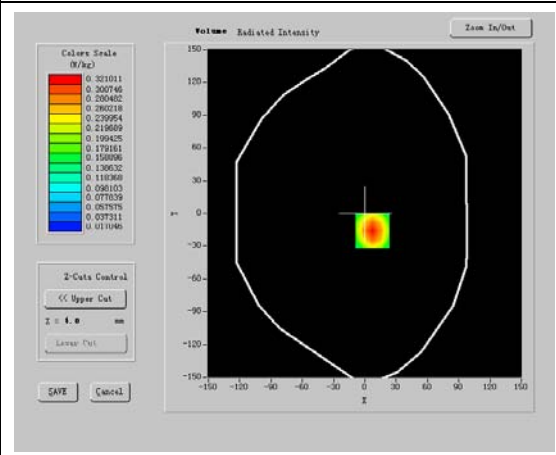
SAR Measurement Results

Frequency (MHz)	2437.000000
Relative permittivity (real part)	38.641998
Relative permittivity (imaginary part)	13.318200
Conductivity (S/m)	1.803136
Variation (%)	-0.730000

SURFACE SAR



VOLUME SAR



SAR 10g (W/Kg)

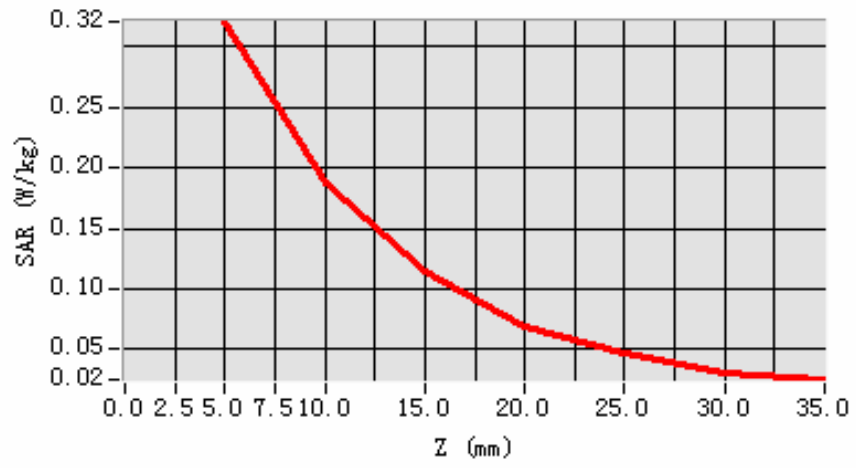
0.174346

SAR 1g (W/Kg)

0.302901

Z Axis Scan

SAR, Z Axis Scan (X = 7, Y = -16)



MEASUREMENT 8

Tp-link g mode middle channel configuration2

Spacing between host device and phantom-0cm

Type: Phone measurement (Complete)

Date of measurement: 23/9/2006

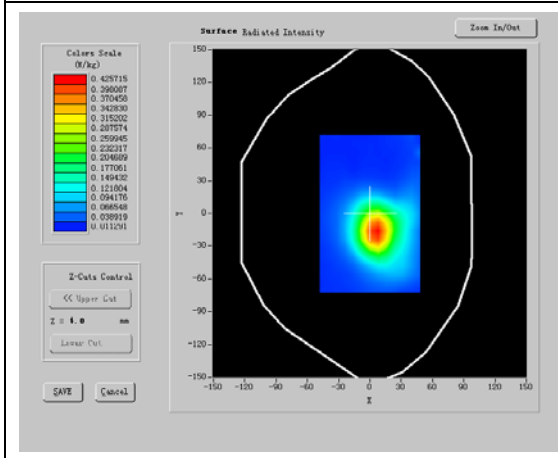
Time of measurement: 14 minutes 38 seconds

Mobile Phone IMEI number: --

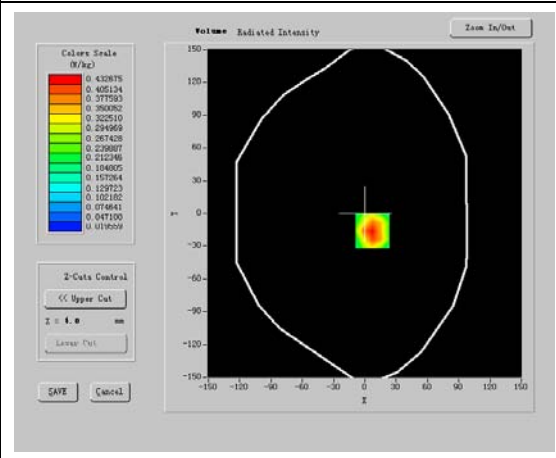
SAR Measurement Results

Frequency (MHz)	2437.000000
Relative permittivity (real part)	52.633999
Relative permittivity (imaginary part)	14.750400
Conductivity (S/m)	1.997040
Variation (%)	0.470000

SURFACE SAR



VOLUME SAR



SAR 10g (W/Kg)

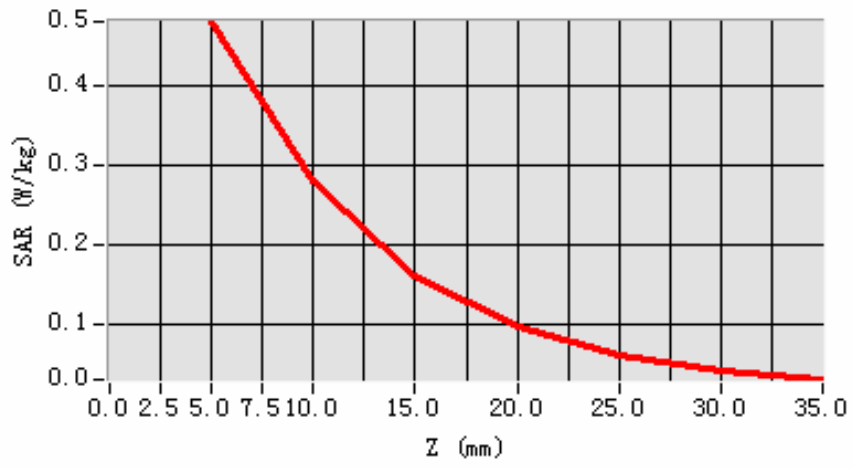
0.255126

SAR 1g (W/Kg)

0.455210

Z Axis Scan

SAR, Z Axis Scan (X = 7, Y = -16)



MEASUREMENT 9

Tp-link g mode high channel configuration1

Spacing between EUT and phantom - 1.5 cm

Type: Phone measurement (Complete)

Date of measurement: 23/9/2006

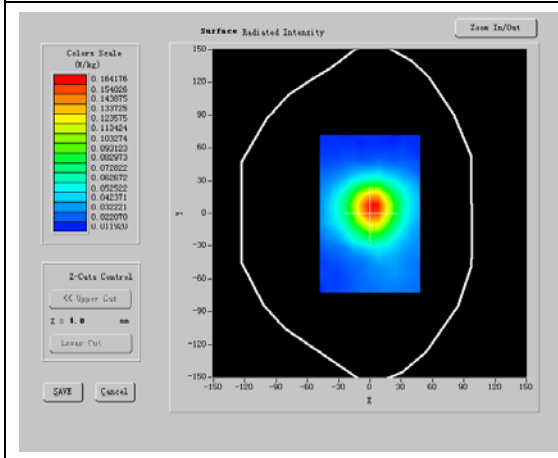
Time of measurement: 14 minutes 37 seconds

Mobile Phone IMEI number: --

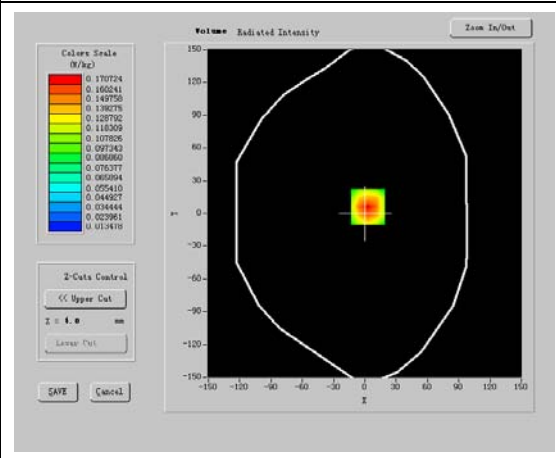
SAR Measurement Results

Frequency (MHz)	2462.000000
Relative permittivity (real part)	38.469002
Relative permittivity (imaginary part)	13.381200
Conductivity (S/m)	1.830251
Variation (%)	-3.070000

SURFACE SAR



VOLUME SAR



SAR 10g (W/Kg)

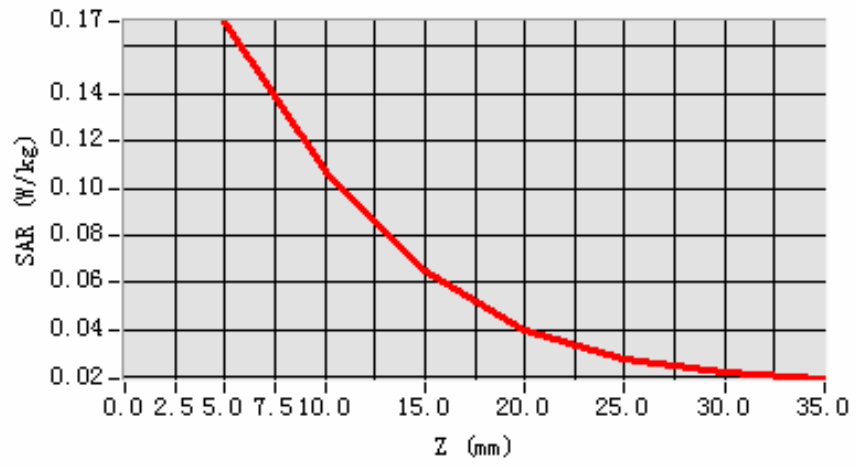
0.094521

SAR 1g (W/Kg)

0.159683

Z Axis Scan

SAR, Z Axis Scan (X = 3, Y = 6)



MEASUREMENT 10

Tp-link b mode high channel configuration1

Spacing between EUT and phantom - 1.5 cm

Type: Phone measurement (Complete)

Date of measurement: 23/9/2006

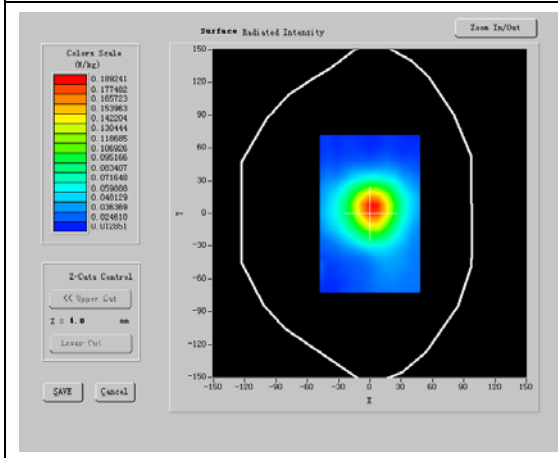
Time of measurement: 14 minutes 28 seconds

Mobile Phone IMEI number: --

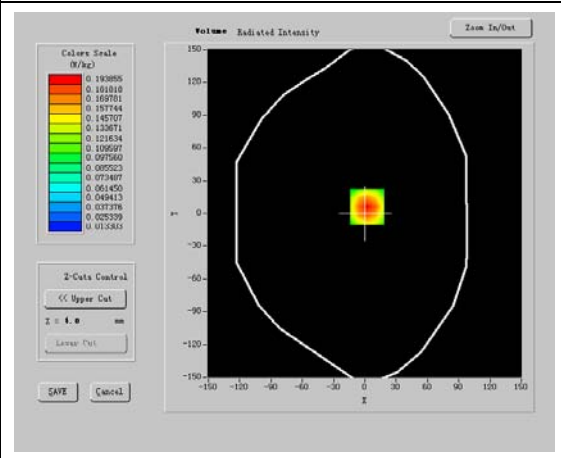
SAR Measurement Results

Frequency (MHz)	2462.000000
Relative permittivity (real part)	38.469002
Relative permittivity (imaginary part)	13.381200
Conductivity (S/m)	1.830251
Variation (%)	0.160000

SURFACE SAR



VOLUME SAR



SAR 10g (W/Kg)

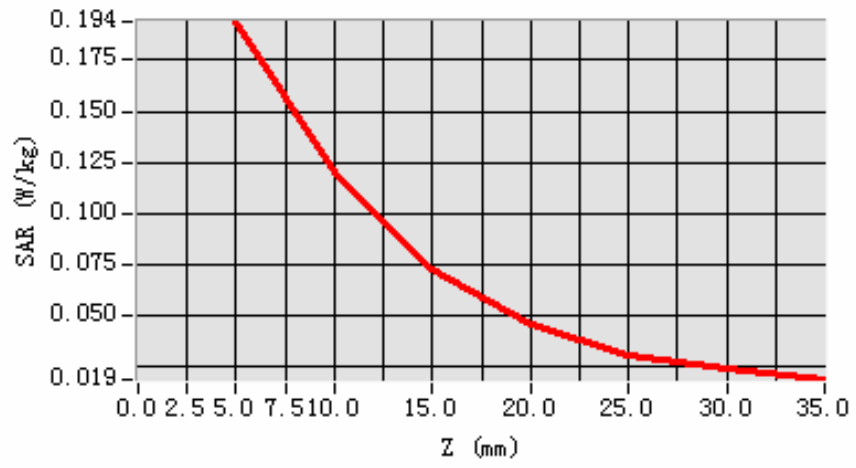
0.109223

SAR 1g (W/Kg)

0.183537

Z Axis Scan

SAR, Z Axis Scan (X = 2, Y = 6)



MEASUREMENT 11

Tp-link b mode high channel configuration2

Spacing between host device and phantom-0cm

Type: Phone measurement (Complete)

Date of measurement: 23/9/2006

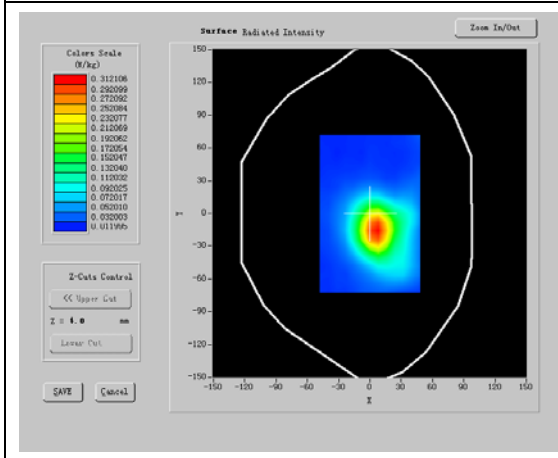
Time of measurement: 14 minutes 23 seconds

Mobile Phone IMEI number: --

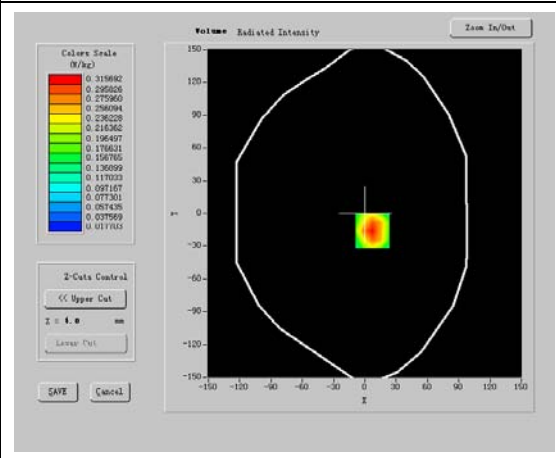
SAR Measurement Results

Frequency (MHz)	2462.000000
Relative permittivity (real part)	52.490002
Relative permittivity (imaginary part)	14.847000
Conductivity (S/m)	2.030740
Variation (%)	-1.750000

SURFACE SAR



VOLUME SAR



SAR 10g (W/Kg)

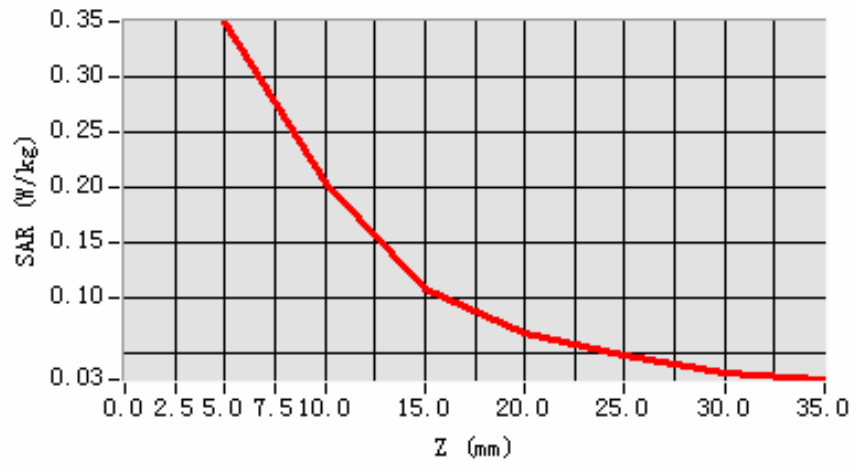
0.187582

SAR 1g (W/Kg)

0.330478

Z Axis Scan

SAR, Z Axis Scan (X = 7, Y = -16)



MEASUREMENT 12

Tp-link g mode high channel configuration2

Spacing between host device and phantom-0cm

Type: Phone measurement (Complete)

Date of measurement: 23/9/2006

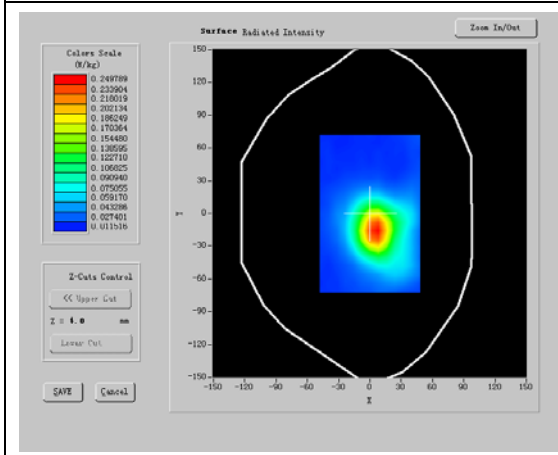
Time of measurement: 14 minutes 28 seconds

Mobile Phone IMEI number: --

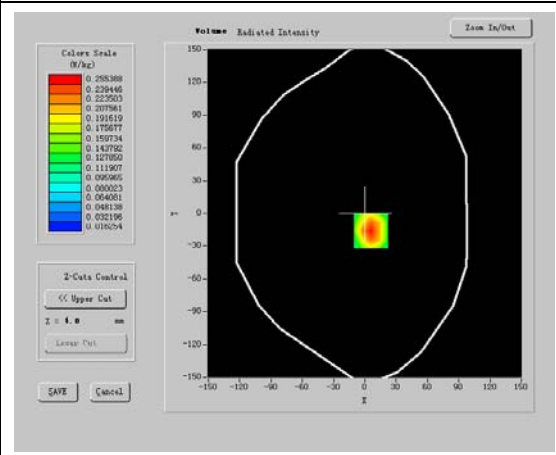
SAR Measurement Results

Frequency (MHz)	2462.000000
Relative permittivity (real part)	52.490002
Relative permittivity (imaginary part)	14.847000
Conductivity (S/m)	2.030740
Variation (%)	-0.930000

SURFACE SAR



VOLUME SAR



SAR 10g (W/Kg)

0.152381

SAR 1g (W/Kg)

0.266791

Z Axis Scan

SAR, Z Axis Scan (X = 6, Y = -16)

