



User Guide

Bluetooth 4.0 Nano USB Adapter
UB400

Contents

About This Guide	1
Chapter 1. Get to Know About Your Adapter.....	2
Chapter 2. Connect to a Computer	4
Chapter 3. Windows XP/7.....	6
3.1. Install Bluetooth Adapter's Driver	7
3.2. Pair With Your Bluetooth Devices.....	10
3.3. Uninstall Bluetooth Adapter's Driver	11
Chapter 4. Windows 8/8.1/10	12
Appendix: Troubleshooting	14

About This Guide

This guide is a complement to Quick Installation Guide. The Quick Installation Guide instructs you on quick installation, and this guide provides the product overview and detailed instructions for each steps.

When using this guide, please notice that features of the adapter may vary slightly depending on the model, software version and system you have. All screenshots, images, parameters and descriptions documented in this guide are used for demonstration only.

Conventions

In this guide, the following conventions are used:

Convention	Description
<i>Teal Italic</i>	Hyperlinks are in teal italic. You can click to redirect to a website or a specific section.
Teal	Contents to be emphasized and texts on the web page are in teal, including the menus, items, buttons, etc.
■ Note:	Ignoring this type of note might result in a malfunction or damage to the device.
💡 Tips:	Indicates important information that helps you make better use of your device.

*Maximum wireless signal rates are the physical rates derived from IEEE Standard 802.11 specifications. Actual wireless data throughput and wireless coverage are not guaranteed and will vary as a result of 1) environmental factors, including building materials, physical objects, and obstacles, 2) network conditions, including local interference, volume and density of traffic, product location, network complexity, and network overhead, and 3) client limitations, including rated performance, location, connection quality, and client condition.

More Info

- The latest software and utility can be found at <https://www.tp-link.com/download-center>.
- The Quick Installation Guide (QIG) can be found where you find this guide or inside the package of the product.
- Specifications can be found on the product page at <https://www.tp-link.com>.
- Our Technical Support contact information can be found at the [Contact Technical Support](https://www.tp-link.com/support) page at <https://www.tp-link.com/support>.

Chapter 1

Get to Know About Your Adapter

This chapter introduces what the adapter can do and shows its appearance.

UB400 is a Bluetooth USB adapter, mainly used for PCs without Bluetooth function. It provides new and advanced Bluetooth 4.0 and enables wireless connection with a wide range of devices such as a Bluetooth headset, a Bluetooth speaker, a Bluetooth mouse or a mobile client, using for playing music, mouse and keyboard control, data transmission, etc.



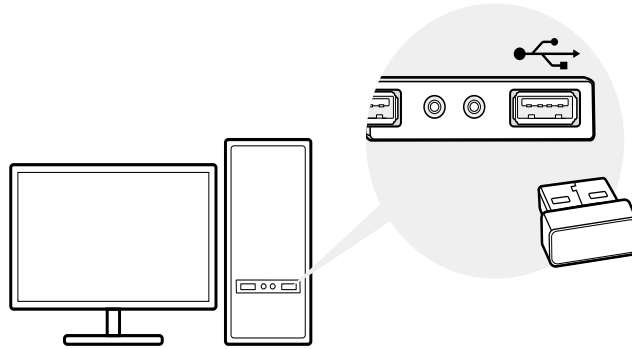
- Advanced Bluetooth 4.0 adapter, backward compatible with Bluetooth® 2.0/2.1/3.0
- Enable wireless connection with Bluetooth-enabled devices
- Small, unobtrusive design allows you to plug it in and forget it is even there
- Plug and play for Windows 8/8.1/10
- Supports Windows XP/7/8/8.1/10

Chapter 2

Connect to a Computer

This chapter introduces how to connect the adapter to your computer.

Before you start using your adapter, insert the adapter into a USB port on your computer directly.



* The image is for demonstration only.

After connecting your adapter to the computer, please follow the instructions in the appropriate chapter for your operating system: [Windows XP/7](#), [Windows 8/8.1/10](#).

■ **Note:**

Make sure there are no other Bluetooth devices on the PC. If there are other Bluetooth devices, disable all Bluetooth devices (both built-in and third party) in **Device Manager** on your computer, then insert the adapter and try again. To go to **Device Manager**: Right-click **My Computer**, select **Manage**, go to **Device Manager** and disable all existing Bluetooth devices.

Chapter 3

Windows XP/7

This chapter introduces how to install your adapter's driver, pair with your bluetooth devices and uninstall your driver in Windows XP and Windows 7. The adapter is equipped with a Setup Wizard, which can guide you through the installation process.

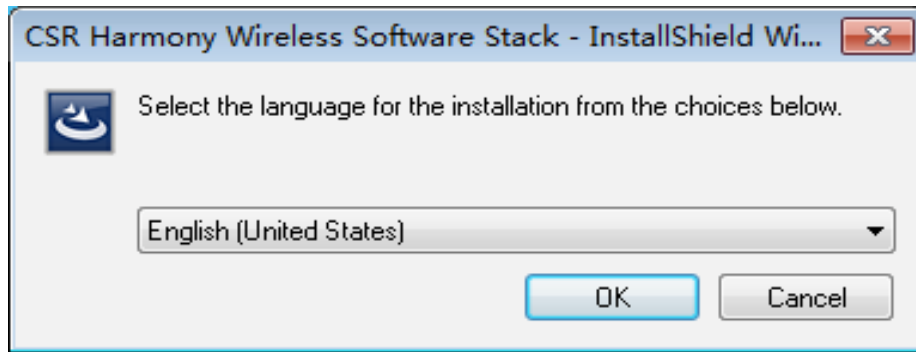
This chapter includes the following sections:

- *Install Bluetooth Adapter's Driver*
- *Pair With Your Bluetooth Devices*
- *Uninstall Bluetooth Adapter's Driver*

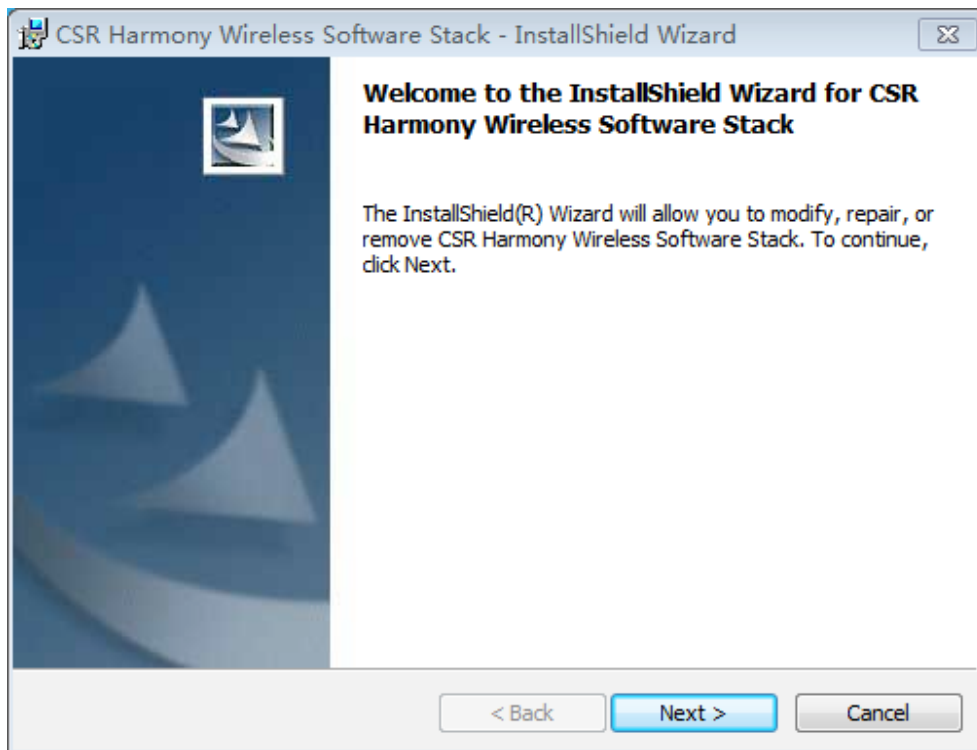
Here we take the steps in Windows 7 as an example - the steps may vary slightly for Windows XP. You need to install the bluetooth adapter's driver before you enjoying using it.

3. 1. Install Bluetooth Adapter's Driver

1. Download the driver at <https://www.tp-link.com/download/UB400.html#Driver>.
2. Unzip the folder and start the installation by clicking [Setup.exe](#).
3. Select the language and click [OK](#).



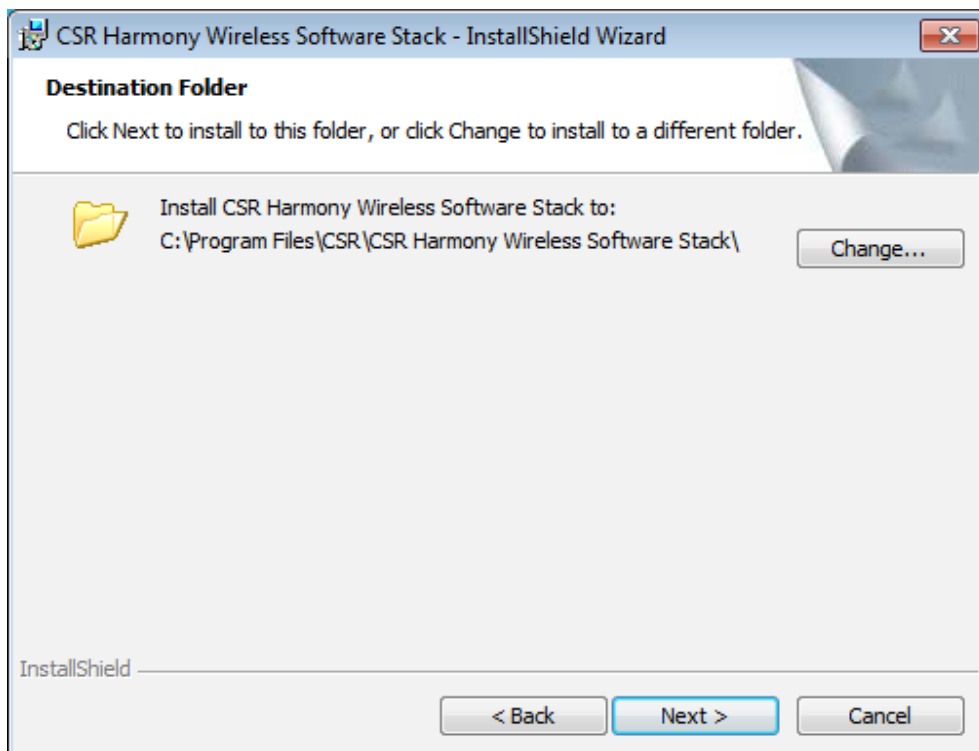
4. When the welcome window appears, click [Next](#).



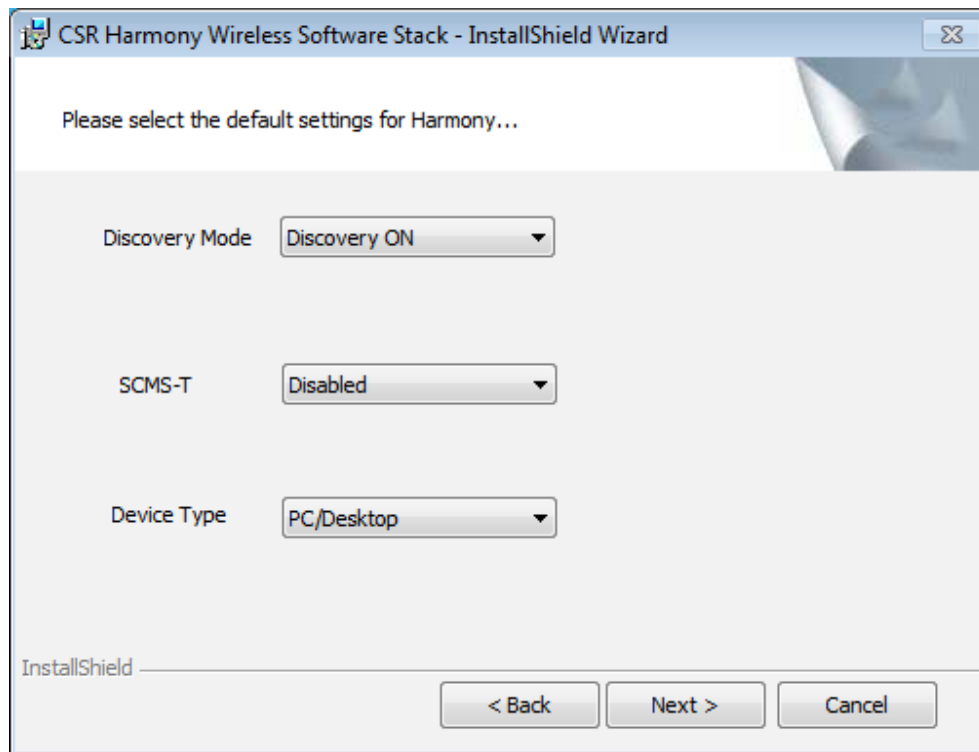
5. Confirm that you agree with the terms of the License Agreement and click [Next](#).



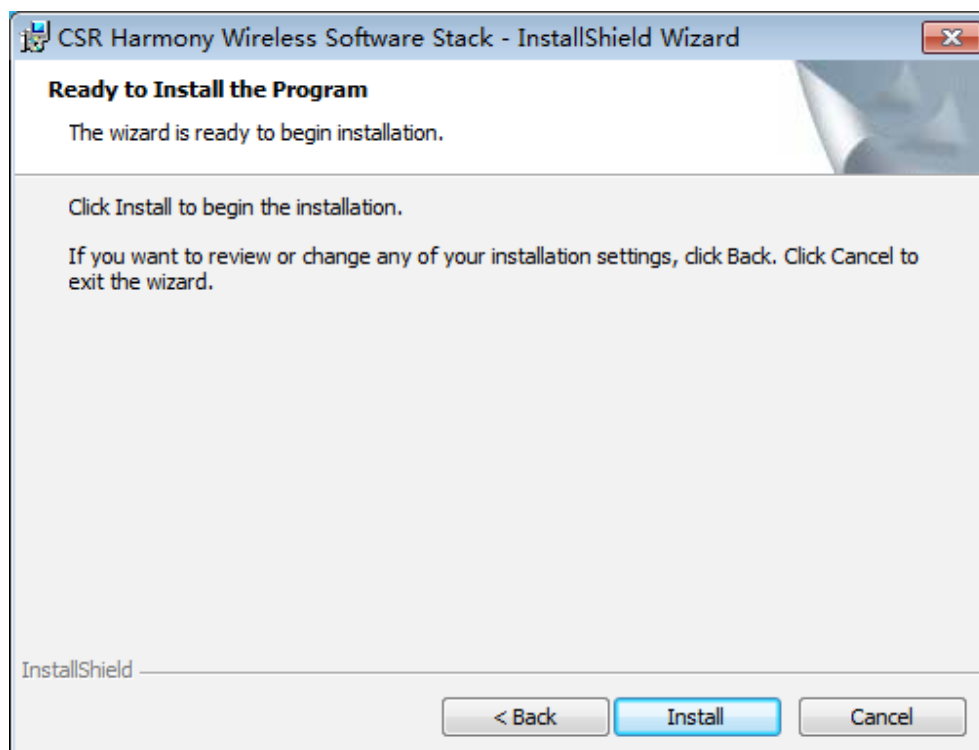
6. Select the installation folder and click **Next**. It's recommended to use the default one.



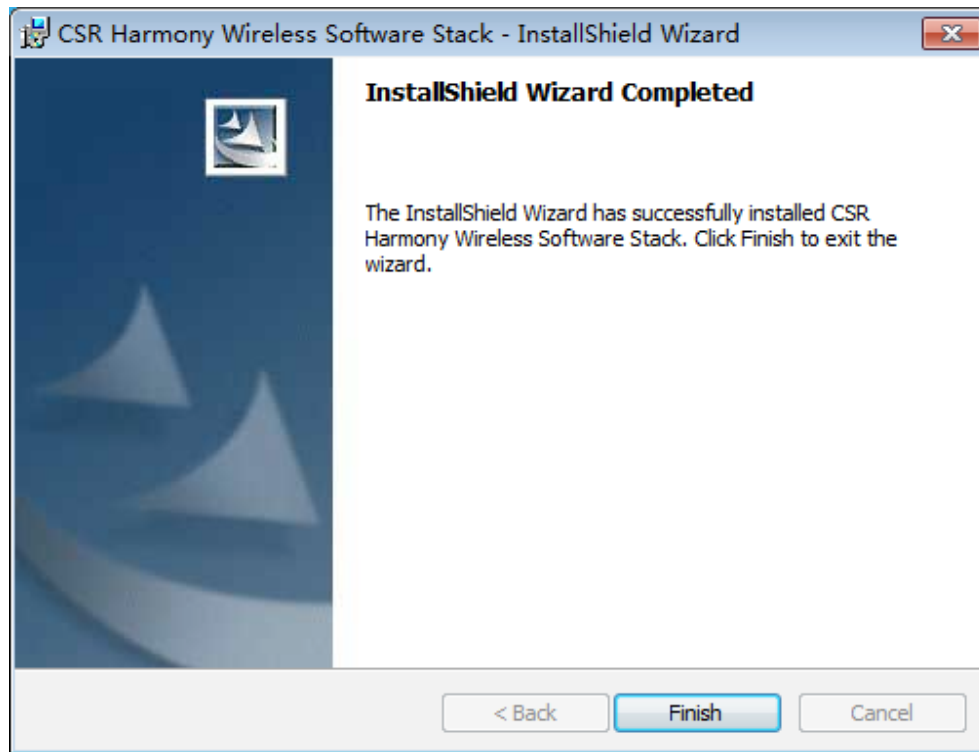
7. Change **Discovery Mode** to **Discovery ON**, select **Device Type: Laptop** or **PC/Desktop** and it's recommended to keep the original values of **SCMS-T**. Click **Next**.



8. Click **Install** to begin the installation.



9. When the finish screen appears, click [Finish](#).



10. Restart your computer.
11. After restarting the computer, you will find a Bluetooth icon in the menu bar, which means the driver has been installed successfully.

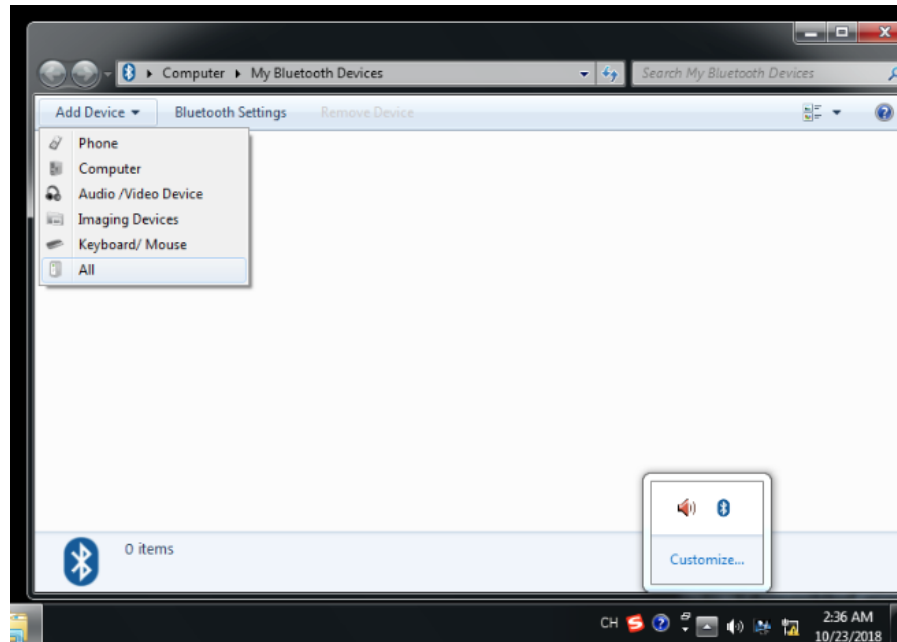


■ **Note:** If the Bluetooth icon doesn't appear, refer to Troubleshooting->T1.

3.2. Pair With Your Bluetooth Devices

1. Right-click the Bluetooth icon in the menu bar and select [Add Bluetooth Devices](#), for example, Audio/Video devices.

■ **Note:** Make sure your Bluetooth device is set to be discoverable.



2. Select the found-out device from the list and click **Next**.
3. Click **Finish** when completing the pairing.

■ **Note:**

During the pairing you may be prompted to enter the pairing code. You need to enter the identical code to both devices. If you pair the earphones that do not enable to enter a code, please try to use the combination of 0000 or 1234, or have a look at the manual of your paired device.

3.3. Uninstall Bluetooth Adapter's Driver

Go to **Start > All Programs > TP-Link > Uninstall TP-Link UB400 Driver**. Follow the on-screen instructions to complete the uninstallation.

Chapter 4

Windows 8/8.1/10

This chapter introduces how to pair with your bluetooth devices in Windows 8, Windows 8.1 and Windows 10.

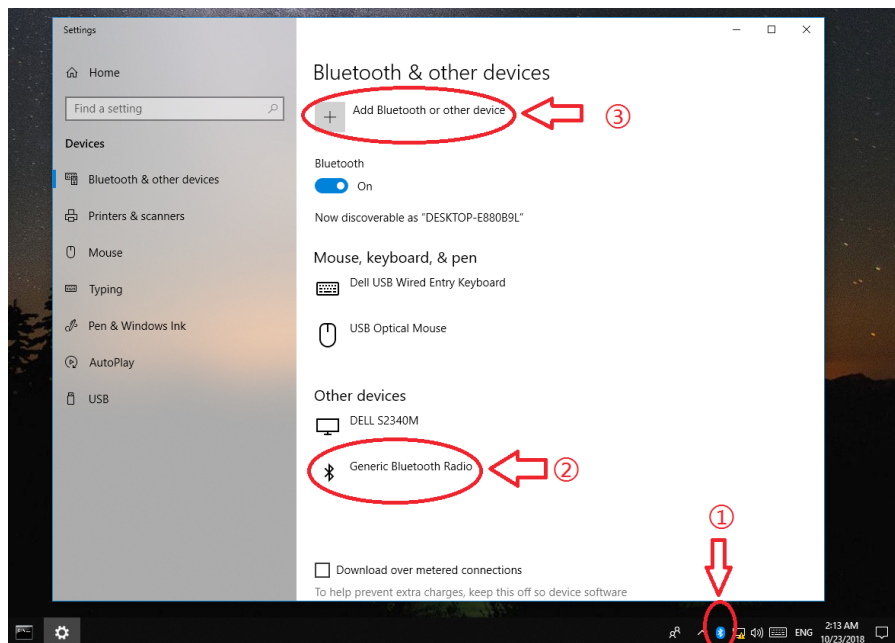
For Windows 8, Windows 8.1 and Windows 10, plug and play. Insert the adapter and enjoy pairing with your Bluetooth devices. You don't need to install the driver manually.

Pair With Your Bluetooth Devices

1. Double-click the Bluetooth icon on the menu bar.

Note:

1. Make sure your Bluetooth device is set to be discoverable.
 2. If the Bluetooth icon doesn't appear, refer to Troubleshooting->T1.
2. For **Windows 8/8.1**, skip this step. For **Windows 10**, click **Add Bluetooth or other device** to scan for Bluetooth devices.



3. Select your Bluetooth device from the list and follow the onscreen instructions to complete pairing.

Note:

During the pairing you may be prompted to enter the pairing code. You need to enter the identical code to both devices. If you pair the earphones that do not enable to enter a code, please try to use the combination of 0000 or 1234, or have a look at the manual of your paired device.

Appendix: Troubleshooting

T1. What should I do if the Bluetooth icon doesn't appear?


- Make sure you have installed the Bluetooth driver if using Windows XP or Windows 7 system. And restart the computer after installing the driver.
- Make sure there are no other Bluetooth devices on the computer. If there are, disable all existing Bluetooth devices in Device Manager, then insert the adapter and try again. To go to Device Manager: Right-click My Computer, select Manager, go to Device Manager and disable all existing Bluetooth devices.

T2. Why the adapter is not working with my Bluetooth device?

- Make sure your device has BLUETOOTH function.
- For devices with non-standard Bluetooth protocols, such as Logitech Mouse and AirPods, there may be some compatibility problems.

If you still have questions and need further help, refer to <https://www.tp-link.com/faq-2316.html>

COPYRIGHT & TRADEMARKS

Specifications are subject to change without notice.  tp-link is a registered trademark of TP-Link Technologies Co., Ltd. Other brands and product names are trademarks or registered trademarks of their respective holders.

No part of the specifications may be reproduced in any form or by any means or used to make any derivative such as translation, transformation, or adaptation without permission from TP-Link Technologies Co., Ltd. Copyright © 2019 TP-Link Technologies Co., Ltd. All rights reserved.

FCC compliance information statement



Product Name: Bluetooth 4.0 Nano USB Adapter

Model Number: UB400

Responsible party:

TP-Link USA Corporation, d/b/a TP-Link North America, Inc.

Address: 145 South State College Blvd. Suite 400, Brea, CA 92821

Website: <https://www.tp-link.com/us/>

Tel: +1 626 333 0234

Fax: +1 909 527 6803

E-mail: sales.usa@tp-link.com

This equipment has been tested and found to comply with the limits for a Class B digital device, pursuant to part 15 of the FCC Rules. These limits are designed to provide reasonable protection against harmful interference in a residential installation. This equipment generates, uses and can radiate radio frequency energy and, if not installed and used in accordance with the instructions, may cause harmful interference to radio communications. However, there is no guarantee that interference will not occur in a particular installation. If this equipment does cause harmful interference to radio or television reception, which can be determined by turning the equipment off and on, the user is encouraged to try to correct the interference by one or more of the following measures:

- Reorient or relocate the receiving antenna.
- Increase the separation between the equipment and receiver.
- Connect the equipment into an outlet on a circuit different from that to which the receiver is connected.
- Consult the dealer or an experienced radio/ TV technician for help.

This device complies with part 15 of the FCC Rules. Operation is subject to the following two conditions:

- 1) This device may not cause harmful interference.
- 2) This device must accept any interference received, including interference that may cause undesired operation.

Any changes or modifications not expressly approved by the party responsible for compliance could void the user's authority to operate the equipment.

Note: The manufacturer is not responsible for any radio or TV interference caused by unauthorized modifications to this equipment. Such modifications could void the user's authority to operate the equipment.

FCC RF Radiation Exposure Statement:

This equipment complies with FCC radiation exposure limits set forth for an uncontrolled environment. End users must follow the specific operating instructions for satisfying RF exposure compliance. This transmitter must not be co-located or operating in conjunction with any other antenna or transmitter. This equipment has been SAR-evaluated for use in hand. SAR measurements are based on a 5mm spacing from the body and that compliance is achieved at that distance.

We, **TP-Link USA Corporation**, has determined that the equipment shown as above has been shown to comply with the applicable technical standards, FCC part 15. There is no unauthorized change is made in the equipment and the equipment is properly maintained and operated.

Issue Date: 2018.12.06

CE Mark Warning



This is a class B product. In a domestic environment, this product may cause radio interference, in which case the user may be required to take adequate measures.

OPERATING FREQUENCY (the maximum transmitted power)

2400MHz-2483.5MHz: 20dBm

EU declaration of conformity

TP-Link hereby declares that the device is in compliance with the essential requirements and other relevant provisions of directives 2014/53/EU, 2009/125/EC and 2011/65/EU.

The original EU declaration of conformity may be found at <https://www.tp-link.com/en/ce>.

RF Exposure Information

This device meets the EU requirements (2014/53/EU Article 3.1a) on the limitation of exposure of the general public to electromagnetic fields by way of health protection.

This device has been tested and meets the ICNIRP exposure guidelines and the European Standard EN 62209-2. SAR is measured with this device at a separation of 0.5 cm to the body, while transmitting at the highest certified output power level in all frequency bands of this device. Carry this device at least 0.5 cm away from your body to ensure exposure levels remain at or below the as-tested levels.

Canadian Compliance Statement

This device complies with Industry Canada license-exempt RSSs. Operation is subject to the following two conditions:

- 1) This device may not cause interference, and
- 2) This device must accept any interference, including interference that may cause undesired operation of the device.

Le présent appareil est conforme aux CNR d'Industrie Canada applicables aux appareils radio exempts de licence. L'exploitation est autorisée aux deux conditions suivantes :

- 1) l'appareil ne doit pas produire de brouillage;
- 2) l'utilisateur de l'appareil doit accepter tout brouillage radioélectrique subi, même si le brouillage est susceptible d'en compromettre le fonctionnement.

Radiation Exposure Statement:

This EUT is compliance with SAR for general population/uncontrolled exposure limits in RSS-102 and had been tested in accordance with the measurement methods and procedures specified in IEEE 1528 and IEC 62209. This equipment should be installed

and operated with minimum distance 1.0 cm between the radiator and your body. This device and its antenna(s) must not be co-located or operating in conjunction with any other antenna or transmitter.

Industry Canada Statement

CAN ICES-3 (B)/NMB-3(B)

Korea Warning Statements

당해 무선설비는 운용중 전파혼신 가능성이 있음.

NCC Notice

注意！

依據 低功率電波輻射性電機管理辦法

第十二條 經型式認證合格之低功率射頻電機，非經許可，公司、商號或使用者均不得擅自變更頻率、加大功率或變更原設計之特性或功能。

第十四條 低功率射頻電機之使用不得影響飛航安全及干擾合法通行；經發現有干擾現象時，應立即停用，並改善至無干擾時方得繼續使用。前項合法通信，指依電信規定作業之無線電信。低功率射頻電機需忍受合法通信或工業、科學以及醫療用電波輻射性電機設備之干擾。

BSMI Notice

安全諮詢及注意事項

- 請使用原裝電源供應器或只能按照本產品注明的電源類型使用本產品。
- 清潔本產品之前請先拔掉電源線。請勿使用液體、噴霧清潔劑或濕布進行清潔。
- 注意防潮，請勿將水或其他液體潑灑到本產品上。
- 插槽與開口供通風使用，以確保本產品的操作可靠並防止過熱，請勿堵塞或覆蓋開口。
- 請勿將本產品置放於靠近熱源的地方。除非有正常的通風，否則不可放在密閉位置中。
- 請不要私自打開機殼，不要嘗試自行維修本產品，請由授權的專業人士進行此項工作。

限用物質含有情況標示聲明書

產品元件 名稱	限用物質及其化學符號					
	鉛 Pb	鎘 Cd	汞 Hg	六價鉻 CrVI	多溴聯苯 PBB	多溴二苯醚 PBDE
PCB	○	○	○	○	○	○
外殼	○	○	○	○	○	○

備考1. “超出0.1wt%”及“超出0.01wt%”系指限用物質之百分比含量超出百分比含量基準值。
備考2. “○”系指該項限用物質之百分比含量未超出百分比含量基準值。



Продукт сертифіковано згідно с правилами системи УкрСЕПРО на відповідність вимогам нормативних документів та вимогам, що передбачені чинними законодавчими актами України.



Safety Information

- Keep the device away from water, fire, humidity or hot environments.
- Do not attempt to disassemble, repair, or modify the device.
- Do not use damaged charger or USB cable to charge the device.
- Do not use the device where wireless devices are not allowed.
- This USB Adapter can be powered only by computers that comply with Limited Power Source(LPS).

Please read and follow the above safety information when operating the device. We cannot guarantee that no accidents or damage will occur due to improper use of the device. Please use this product with care and operate at your own risk.

Explanation of the symbols on the product label

Symbol	Explanation
The WEEE recycling symbol, which is a crossed-out wheeled bin, with a small circle containing a dot below it.	<p>RECYCLING</p> <p>This product bears the selective sorting symbol for Waste electrical and electronic equipment (WEEE). This means that this product must be handled pursuant to European directive 2012/19/EU in order to be recycled or dismantled to minimize its impact on the environment.</p> <p>User has the choice to give his product to a competent recycling organization or to the retailer when he buys a new electrical or electronic equipment.</p>