

FCC SAR Test Report

FCC ID: TE7T2UNANO

Project No. : 1808C130
Equipment : AC600 Nano Wireless USB Adapter
Model Name : Archer T2U Nano
Applicant : TP-Link Technologies Co., Ltd.
Address : Building 24 (floors 1,3,4,5) and 28 (floors1-4) Central Science and Technology Park,Shennan Rd, Nanshan, Shenzhen,China

Date of Receipt : Aug. 28, 2018
Date of Test : Oct. 18, 2018
Issued Date : Nov. 09, 2018
Tested by : BTL Inc.

PREPARED BY : Rot Liang
(Rot Liang)

APPROVED BY : Steven Lu
(Steven Lu)

B T L I N C .

No.3, Jinshagang 1st Road, Shixia, Dalang Town, Dongguan, Guangdong, China.

TEL: +86-769-8318-3000 FAX: +86-769-8319-6000



Certificate #5123.02

Declaration

BTL represents to the client that testing is done in accordance with standard procedures as applicable and that test instruments used has been calibrated with standards traceable to international standard(s) and/or national standard(s).

BTL's reports apply only to the specific samples tested under conditions. It is manufacture's responsibility to ensure that additional production units of this model are manufactured with the identical electrical and mechanical components. **BTL** shall have no liability for any declarations, inferences or generalizations drawn by the client or others from **BTL** issued reports.

The report must not be used by the client to claim product certification, approval, or endorsement by A2LA, NIST, or any agency of the U.S. Government.

This report is the confidential property of the client. As a mutual protection to the clients, the public and ourselves, the test report shall not be reproduced, except in full, without our written approval.

BTL's laboratory quality assurance procedures are in compliance with the **ISO Guide 17025** requirements, and accredited by the conformity assessment authorities listed in this test report.

BTL is not responsible for the sampling stage, so the results only apply to the sample as received.

The information, data and test plan are provided by manufacturer, so it is manufacturer's responsibility to ensure that the apparatus meets the essential requirements in all the possible configurations as representative of its intended use.

Limitation

For the use of the authority's logo is limited unless the Test Standard(s)/Scope(s)/Item(s) mentioned in this test report is (are) included in the conformity assessment authorities acceptance respective.

Table of Contents	Page
1 . GENERAL SUMMARY	6
2 . RF EMISSIONS MEASUREMENT	7
2.1 TEST FACILITY	7
2.2 MEASUREMENT UNCERTAINTY	7
3 . GENERAL INFORMATION	8
3.1 STATEMENT OF COMPLIANCE	8
3.2 GENERAL DESCRIPTION OF EUT	9
3.3 LABORATORY ENVIRONMENT	9
3.4 MAIN TEST INSTRUMENTS	10
4 . SAR MEASUREMENTS SYSTEM CONFIGURATION	11
4.1 SAR MEASUREMENT SET-UP	11
4.1.1 TEST SETUP LAYOUT	11
4.2 DASY5E-FIELDPROBESYSTEM	12
4.2.1 EX3DV4 PROBE SPECIFICATION	12
4.2.2 E-FIELD PROBE CALIBRATION	13
4.2.3 OTHER TEST EQUIPMENT	14
4.2.4 SCANNING PROCEDURE	15
4.2.5 SPATIAL PEAK SAR EVALUATION	16
4.2.6 DATA STORAGE AND EVALUATION	17
4.2.7 DATA EVALUATION BY SEMCAD	18
5 . SYSTEM VERIFICATION PROCEDURE	20
5.1 TISSUE VERIFICATION	20
5.2 SYSTEM CHECK	21
5.3 SYSTEM CHECK PROCEDURE	21
6 . SAR MEASUREMENT VARIABILITY AND UNCERTAINTY	22
6.1 SAR MEASUREMENT VARIABILITY	22
7 . OPERATIONAL CONDITIONS DURING TEST	23
7.1 WIFI TEST CONFIGURATION	23
7.1.1 WLAN2.4G SAR TEST REQUIREMENTS	23
7.1.2 WLAN5G SAR TEST REQUIREMENTS	24
7.1.3 OFDM TRANSMISSION MODE AND SAR TEST CHANNEL SELECTION	24
7.1.4 INITIAL TEST CONFIGURATION PROCEDURE	25
7.2 TEST POSITION	25
7.2.1 BODY TEST CONFIGURATION	25
8 . TEST RESULT	26
8.1 CONDUCTED POWER RESULTS	26

Table of Contents	Page
8.1.1 CONDUCTED POWER MEASUREMENTS OF WIFI 2.4G	26
8.1.2 CONDUCTED POWER MEASUREMENTS OF WIFI 5.2G	27
8.1.3 CONDUCTED POWER MEASUREMENTS OF WIFI 5.3G	28
8.1.4 CONDUCTED POWER MEASUREMENTS OF WIFI 5.6G	29
8.1.5 CONDUCTED POWER MEASUREMENTS OF WIFI 5.8G	30
8.2 SAR TEST RESULTS	31
8.2.1 WWAN SAR MEASUREMENT RESULT	32
8.3 MULTIPLE TRANSMITTER EVALUATION	33
APPENDIX	34
1. TEST LAYOUT	34
Appendix A. SAR Plots of System Verification	
Appendix B. SAR Plots of SAR Measurement	
Appendix C. Calibration Certificate for Probe and Dipole	
Appendix D. Photographs of the Test Set-Up	

REPORT ISSUED HISTORY

Report Version	Description	Issued Date
R00	Original Issue	Nov. 09, 2018

1. GENERAL SUMMARY

Equipment	AC600 Nano Wireless USB Adapter
Brand Name	tp-link
Model Name	Archer T2U Nano
Manufacturer	TP-Link Technologies Co., Ltd.
Address	Building 24 (floors 1,3,4,5) and 28 (floors1-4) Central Science and Technology Park,Shennan Rd, Nanshan, Shenzhen,China
Standard(s)	<p>ANSI Std C95.1:1992 Safety Levels with Respect to Human Exposure to Radio Frequency Electromagnetic Fields, 3 kHz – 300 GHz.(IEEE Std C95.1-1991)</p> <p>IEEE Std 1528:2013 Recommended Practice for Determining the Peak Spatial-Average Specific Absorption Rate (SAR) in the Human Head from Wireless Communications Devices: Measurement Techniques</p> <p>KDB447498 D01 General RF Exposure Guidance v06</p> <p>KDB447498 D02 SAR Procedures for Dongle Xmtr v02</p> <p>KDB248227 D01 802. 11 Wi-Fi SAR v02r02</p> <p>KDB865664 D01 SAR measurement 100 MHz to 6 GHz v01r04</p> <p>KDB865664 D02 SAR Reporting v01r02</p> <p>KDB690783 D01 SAR Listings on Grants v01r03</p>

The above equipment has been tested and found compliance with the requirement of the relative standards by BTL Inc.

The test data, data evaluation, and equipment configuration contained in our test report (Ref No. BTL-FCC SAR-1-1808C130) were obtained utilizing the test procedures, test instruments, test sites that has been accredited by the Authority of A2LA according to the ISO-17025 quality assessment standard and technical standard(s).

2. RF EMISSIONS MEASUREMENT

2.1 TEST FACILITY

The test facilities used to collect the test data in this report is **SAR room** at the location of No.3,Jinshagang 1st Road, ShiXia, Dalang Town,Dong Guan, China.523792

2.2 MEASUREMENT UNCERTAINTY

Note: Per KDB865664 D01 SAR Measurement 100 MHz to 6 GHz, when the highest measured 1-g SAR within a frequency band is < 1.5 W/kg, the extensive SAR measurement uncertainty analysis described in IEEE Std 1528-2013 is not required in SAR reports submitted for equipment approval. The equivalent ratio (1.5/1.6) is applied to extremity and occupational exposure conditions.

3. GENERAL INFORMATION

3.1 STATEMENT OF COMPLIANCE

Equipment Class	Mode	Body (0.5cm) SAR-1g(W/kg)
DTS	2.4G WLAN	0.64
UNII	5.3G WLAN	0.14
	5.6G WLAN	0.40
	5.8G WLAN	0.31
Note: The highest reported SAR for body is 0.64W/kg.		

Note:

1) The device is in compliance with Specific Absorption Rate(SAR) for general population uncontrolled exposure limits according to the FCC rule §2.1093, the ANSI C95.1:1992/IEEE C95.1:1991, the NCRP Report Number 86 for uncontrolled environment, and had been tested in accordance with the measurement methods and procedures specified in IEEE Std 1528-2013 .

3.2 GENERAL DESCRIPTION OF EUT

Equipment	AC600 Nano Wireless USB Adapter				
Model Name	Archer T2U Nano				
HW Version	1.0				
SW Version	win xp/7/8/8.1/10 : 07/18/2018,1030.29.1102.2017				
Modulation	WiFi(DSSS/OFDM)				
Operation Frequency Range(s)	Band	TX (MHz)		RX (MHz)	
	2.4G WIFI	2412-2472			
	5G WIFI Band 1	5150-5250			
	5G WIFI Band 2	5250-5350			
	5G WIFI Band 3	5470-5725			
	5G WIFI Band 4	5725-5850			
Test Channels (low-mid-high)	1-6-11 (2.4G WIFI 802.11b/g/n HT20/ac HT20)				
	3-6-9 (2.4G WIFI 802.11n HT40/ac HT40)				
	5G WIFI	Band 1	Band 2	Band 3	Band 4
	a/n HT20/ ac VH20	36-40-44-48	52-56-60-64	100-104-108- 112-116-132- 136-140	149-153-157- 161-165
	n HT40/ ac VH40	38-46	54-62	102-134	151-159
	ac VH80	42	58	106-138	155
Antenna Gain	Band	Ant Gain(dBi)			
	2.4G WIFI	0.36			
	5.2G WIFI	3.28			
	5.3G WIFI	3.38			
	5.6G WIFI	3.30			
	5.8G WIFI	2.99			

3.3 LABORATORY ENVIRONMENT

Temperature	Min. = 18°C, Max. = 25°C
Relative humidity	Min. = 30%, Max. = 70%
Ground system resistance	< 0.5 Ω
Ambient noise is checked and found very low and in compliance with requirement of standards. Reflection of surrounding objects is minimized and in compliance with requirement of standards.	

3.4 MAIN TEST INSTRUMENTS

Item	Equipment	Manufacturer	Model	Serial No.	Cal. Date	Cal. Interval
1	Data Acquisition Electronics	Speag	DAE4	1390	May 11, 2018	1 Year
2	E-field Probe	Speag	EX3DV4	7396	May 29, 2018	1 Year
3	Electro Optical Converter	Speag	ECO90	1151	N/A	N/A
4	System Validation Dipole	Speag	D2450V2	919	Jun. 11, 2018	3 Years
5	System Validation Dipole	Speag	D5GHzV2	1160	Jun. 20, 2018	3 Years
6	Twin Sam Phantom	Speag	Twin Sam Phantom V5.0	1784	N/A	N/A
7	Twin Sam Phantom	Speag	Twin Sam Phantom V5.0	1896	N/A	N/A
8	Power Amplifier	Mini-Circuits	ZHL-42W+	QA1333003	Mar. 09, 2018	1Year
9	Power Amplifier	Mini-Circuits	ZVE-8G+	520701341	Mar. 09, 2018	1Year
10	DC Source metter	Iteck	OT6154	M00157	NA	NA
11	ENA Network Analyzer	Agilent	E5071C	MY46102965	Mar. 11, 2018	1 Year
12	MXG Analog Signal Generator	Agilent	N5181A	MY49060710	Aug. 11, 2018	1 Year
13	P-series power meter	Agilent	N1911A	MY45100473	Aug. 11, 2018	1 Year
14	wideband power sensor	Agilent	N1921A	MY51100041	Aug. 11, 2018	1 Year
15	power Meter	Anritsu	ML2495A	1128009	Mar. 11, 2018	1 Year
16	Pulse Power Sensor	Anritsu	MA 2411B	1027500	Mar. 11, 2018	1 Year
17	Dielectric Assessment Kit	Speag	DAK-3.5	1226	N/A	N/A
18	Dual directional coupler	Woken	TS-PCC0M-05	107090019	Mar. 11, 2018	1 Year
19	coupler	Woken	0110A05601O-10	COM5BNW1A2	Mar. 11, 2018	1 Year
20	Bluetooth Test Set	Anritsu	Mt8852B-042	1132009	Aug. 11, 2018	1 Year
21	Digital Themometer	LKM	DTM3000	3519	Jul. 19, 2018	1 Year
22	Thermohygrometer	TESTO	608-H1	1341359457/304	Oct. 27, 2017	1 Year

Note:

1." N/A" denotes no model name, serial No. or calibration specified.

2.

1) Per KDB865664 D01 requirements for dipole calibration, the test laboratory has adopted three-year extended calibration interval. Each measured dipole is expected to evaluate with the following criteria at least on annual interval in Appendix C.

a) There is no physical damage on the dipole;

b) System check with specific dipole is within 10% of calibrated value;

c) The most recent return-loss result , measured at least annually, deviates by no more than 20% from the previous measurement;

d) The most recent measurement of the real or imaginary parts of the impedance, measured at least annually is within 5Ω from the previous measurement.

2) Network analyzer probe calibration against air, distilled water and a short block performed before measuring liquid parameters.

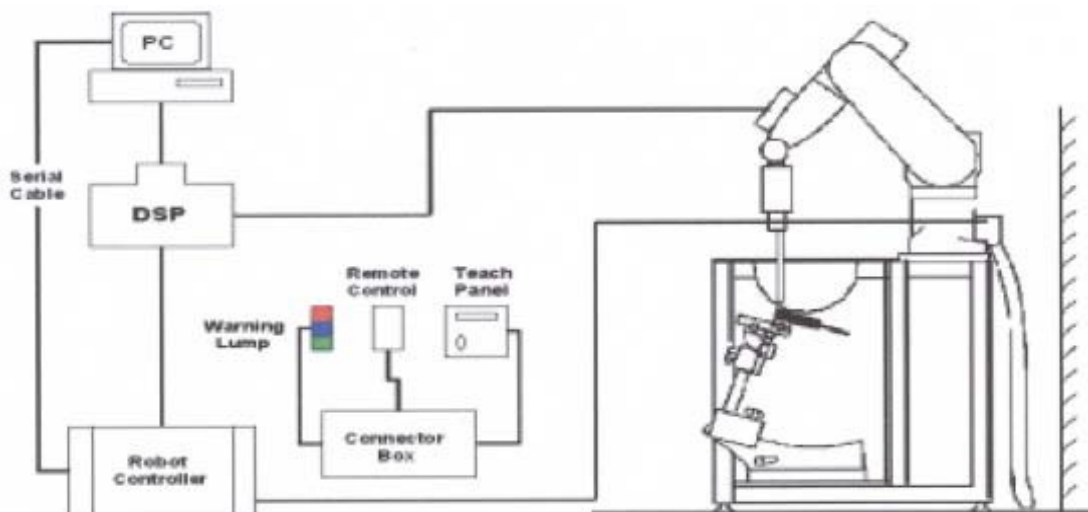
4. SAR MEASUREMENTS SYSTEM CONFIGURATION

4.1 SAR MEASUREMENT SET-UP

The DASY5 system for performing compliance tests consists of the following items:

1. A standard high precision 6-axis robot (Stäubli RX family) with controller and software. An arm extension for accommodating the data acquisition electronics (DAE).
2. A dosimetric probe, i.e. an isotropic E-field probe optimized and calibrated for usage in tissue simulating liquid. The probe is equipped with an optical surface detector system.
3. A data acquisition electronic (DAE) which performs the signal amplification, signal multiplexing, AD-conversion, offset measurements, mechanical surface detection, collision detection, etc. The unit is battery powered with standard or rechargeable batteries. The signal is optically transmitted to the EOC.
4. A unit to operate the optical surface detector which is connected to the EOC.
5. The Electro-Optical Coupler (EOC) performs the conversion from the optical into a digital electric signal of the DAE. The EOC is connected to the DASY5 measurement server.
6. The DASY5 measurement server, which performs all real-time data evaluation for field measurements and surface detection, controls robot movements and handles safety operation. A computer operating Windows 7
7. DASY5 software and SEMCAD data evaluation software.
8. Remote control with teach panel and additional circuitry for robot safety such as warning lamps, etc.
9. The generic twin phantom enabling the testing of left-hand and right-hand usage.
10. The device holder for handheld mobile phones.
11. Tissue simulating liquid mixed according to the given recipes.
12. System validation dipoles allowing to validate the proper functioning of the system.

4.1.1 TEST SETUP LAYOUT



4.2 DASY5E-FIELDPROBESYSTEM

The SAR measurements were conducted with the dosimetric probe EX3DV4(manufactured by SPEAG),designed in the classical triangular configuration and optimized for dosimetric valuation.

4.2.1 EX3DV4 PROBE SPECIFICATION

Construction	Symmetrical design with triangular core Interleaved sensors Built-in shielding against static charges PEEK enclosure material (resistant to organic solvents, e.g., DGBE)
Calibration	ISO/IEC 17025 calibration service available
Frequency	10 MHz to 6 GHz Linearity: ± 0.2 dB (30 MHz to 6 GHz)
Directivity	± 0.3 dB in HSL (rotation around probe axis) ± 0.5 dB in tissue material (rotation normal to probe axis)
Dynamic Range	10 μ W/g to > 100 mW/g Linearity: ± 0.2 dB
Dimensions	Overall length: 330 mm (Tip: 20 mm) Tip diameter: 2.5 mm (Body: 12 mm) Distance from probe tip to dipole centers: 1.0 mm



EX3DV4 E-field Probe

4.2.2 E-FIELD PROBE CALIBRATION

Each probe is calibrated according to an isotropic assessment procedure with accuracy better than $\pm 10\%$. The spherical isotropy was evaluated and found to be better than $\pm 0.25\text{dB}$. The sensitivity parameters (NormX, NormY, NormZ), the diode compression parameter (DCP) and the conversion factor (ConvF) of the probe are tested.

The free space E-field from amplified probe outputs is determined in a test chamber. This is performed in a TEM cell for frequencies below 1 GHz, and in a wave guide above 1 GHz for free space. For the free space calibration, the probe is placed in the volumetric center of the cavity and at the proper orientation with the field. The probe is then rotated 360 degrees.

E-field temperature correlation calibration is performed in a flat phantom filled with the appropriate simulated brain tissue. The measured free space E-field in the medium correlates to temperature rise in a dielectric medium. For temperature correlation calibration a RF transparent thermistor-based temperature probe is used in conjunction with the E-field probe.

$$\text{SAR} = C \frac{\Delta T}{\Delta t}$$

Where: Δt = Exposure time (30 seconds),

C = Heat capacity of tissue (brain or muscle),

ΔT = Temperature increase due to RF exposure.

Or
$$\text{SAR} = \frac{|E|^2 \sigma}{\rho}$$

Where: σ = Simulated tissue conductivity,

ρ = Tissue density (kg/m^3).


4.2.3 OTHER TEST EQUIPMENT

4.2.3.1. Device Holder for Transmitters

Construction: Simple but effective and easy-to-use extension for Mounting Device that facilitates the testing of larger devices(e.g., laptops, cameras, etc.) It is lightweight and fits easily on the upper part of the Mounting Device in place of the phone positioner. The extension is fully compatible with the Twin SAM, ELI4and SAM v6.0Phantoms.

Material: POM, Acrylic glass, Foam

4.2.3.2 Phantom

Model	Twin SAM	
Construction	The shell corresponds to the specifications of the Specific Anthropomorphic Mannequin (SAM) phantom defined in IEEE 1528 and IEC 62209-1. It enables the dosimetric evaluation of left and right hand phone usage as well as body mounted usage at the flat phantom region. A cover prevents evaporation of the liquid. Reference markings on the phantom allow the complete setup of all predefined phantom positions and measurement grids by teaching three points with the robot.	
Shell Thickness	2 ± 0.2 mm	
Filling Volume	Approx. 25 liters	
Dimensions	Length:1000mm; Width: 500mm Height: adjustable feet	
Available	Special	

4.2.4 SCANNING PROCEDURE

The DASY5 installation includes predefined files with recommended procedures for measurements and validation. They are read-only document files and destined as fully defined but unmeasured masks. All test positions (head or body-worn) are tested with the same configuration of test steps differing only in the grid definition for the different test positions.

The “reference” and “drift” measurements are located at the beginning and end of the batch process. They measure the field drift at one single point in the liquid over the complete procedure. The indicated drift is mainly the variation of the DUT’s output power and should vary max. $\pm 5\%$.

The “surface check” measurement tests the optical surface detection system of the DASY5 system by repeatedly detecting the surface with the optical and mechanical surface detector and comparing the results. The output gives the detecting heights of both systems, the difference between the two systems and the standard deviation of the detection repeatability. Air bubbles or refraction in the liquid due to separation of the sugar-water mixture gives poor repeatability (above $\pm 0.1\text{mm}$). To prevent wrong results tests are only executed when the liquid is free of air bubbles. The difference between the optical surface detection and the actual surface depends on the probe and is specified with each probe. (It does not depend on the surface reflectivity or the probe angle to the surface within $\pm 30^\circ$.)

- Area Scan

The “area scan” measures the SAR above the DUT or verification dipole on a parallel plane to the surface. It is used to locate the approximate location of the peak SAR with 2D spline interpolation. The robot performs a stepped movement along one grid axis while the local electrical field strength is measured by the probe. The probe is touching the surface of the SAM during acquisition of measurement values. The standard scan uses large grid spacing for faster measurement. Standard grid spacing for head measurements is 15 mm in x- and y- dimension ($\leq 2\text{GHz}$), 12 mm in x- and y- dimension (2-4 GHz) and 10mm in x- and y- dimension (4-6GHz). If a finer resolution is needed, the grid spacing can be reduced. Grid spacing and orientation have no influence on the SAR result. For special applications where the standard scan method does not find the peak SAR within the grid, e.g. mobile phones with flip cover, the grid can be adapted in orientation.

- Zoom Scan

A “zoom scan” measures the field in a volume around the 2D peak SAR value acquired in the previous “coarse” scan. This is a fine grid with maximum scan spatial resolution: $\Delta x_{\text{zoom}}, \Delta y_{\text{zoom}} \leq 2\text{GHz} - \leq 8\text{mm}$, 2-4GHz - $\leq 5\text{ mm}$ and 4-6 GHz - $\leq 4\text{mm}$; $\Delta z_{\text{zoom}} \leq 3\text{GHz} - \leq 5\text{ mm}$, 3-4 GHz - $\leq 4\text{mm}$ and 4-6GHz - $\leq 2\text{mm}$ where the robot additionally moves the probe along the z-axis away from the bottom of the Phantom. DASY is also able to perform repeated zoom scans if more than 1 peak is found during area scan. In this document, the evaluated peak 1g and 10g averaged SAR values are shown in the 2D-graphics in Appendix B. Test results relevant for the specified standard (see chapter 1.4.) are shown in table form in chapter 7.2.

A Z-axis scan measures the total SAR value at the x-and y-position of the maximum SAR value found during the cube scan. The probe is moved away in z-direction from the bottom of the SAM phantom in 2 mm steps. This measurement shows the continuity of the liquid and can - depending in the field strength – also show the liquid depth.

The following table summarizes the area scan and zoom scan resolutions per FCC KDB 865664D01:

Frequency	Maximum Area Scan resolution ($\Delta x_{area}, \Delta y_{area}$)	Maximum Zoom Scan spatial resolution ($\Delta x_{Zoom}, \Delta y_{Zoom}$)	Maximum Zoom Scan spatial resolution			Minimum zoom scan volume (x,y,z)
			Uniform Grid	Graded Grad		
				$\Delta z_{Zoom}(n)$	$\Delta z_{Zoom}(1)^*$	
$\leq 2\text{GHz}$	$\leq 15\text{mm}$	$\leq 8\text{mm}$	$\leq 5\text{mm}$	$\leq 4\text{mm}$	$\leq 1.5 \cdot \Delta z_{Zoom}(n-1)$	$\geq 30\text{mm}$
2-3GHz	$\leq 12\text{mm}$	$\leq 5\text{mm}$	$\leq 5\text{mm}$	$\leq 4\text{mm}$	$\leq 1.5 \cdot \Delta z_{Zoom}(n-1)$	$\geq 30\text{mm}$
3-4GHz	$\leq 12\text{mm}$	$\leq 5\text{mm}$	$\leq 4\text{mm}$	$\leq 3\text{mm}$	$\leq 1.5 \cdot \Delta z_{Zoom}(n-1)$	$\geq 28\text{mm}$
4-5GHz	$\leq 10\text{mm}$	$\leq 4\text{mm}$	$\leq 3\text{mm}$	$\leq 2.5\text{mm}$	$\leq 1.5 \cdot \Delta z_{Zoom}(n-1)$	$\geq 25\text{mm}$
5-6GHz	$\leq 10\text{mm}$	$\leq 4\text{mm}$	$\leq 2\text{mm}$	$\leq 2\text{mm}$	$\leq 1.5 \cdot \Delta z_{Zoom}(n-1)$	$\geq 22\text{mm}$

4.2.5 SPATIAL PEAK SAR EVALUATION

The spatial peak SAR - value for 1 and 10 g is evaluated after the Cube measurements have been done. The basis of the evaluation are the SAR values measured at the points of the fine cube grid consisting of 5 x 5 x 7 points(with 8mm horizontal resolution) or 7 x 7 x 7 points(with 5mm horizontal resolution) or 8 x 8 x 7 points(with 4mm horizontal resolution). The algorithm that finds the maximal averaged volume is separated into three different stages.

- The data between the dipole center of the probe and the surface of the phantom are extrapolated. This data cannot be measured since the center of the dipole is 2.7 mm away from the tip of the probe and the distance between the surface and the lowest measuring point is about 1 mm (see probe calibration sheet). The extrapolated data from a cube measurement can be visualized by selecting “Graph Evaluated”.
- The maximum interpolated value is searched with a straight-forward algorithm. Around this maximum the SAR - values averaged over the spatial volumes (1g or 10 g) are computed using the 3d-spline interpolation algorithm. If the volume cannot be evaluated (i.e., if a part of the grid was cut off by the boundary of the measurement area) the evaluation will be started on the corners of the bottom plane of the cube.
- All neighboring volumes are evaluated until no neighboring volume with a higher average value is found.

Extrapolation

The extrapolation is based on a least square algorithm [W. Gander, Computer mathematic, p.168-180]. Through the points in the first 3 cm along the z-axis, polynomials of order four are calculated. These polynomials are then used to evaluate the points between the surface and the probe tip. The points, calculated from the surface, have a distance of 1 mm from each other.

Interpolation

The interpolation of the points is done with a 3d-Spline. The 3d-Spline is composed of three one-dimensional splines with the "Not a knot"-condition [W. Gander, Computer mathematic, p.141-150] (x, y and z -direction) [Numerical Recipes in C, Second Edition, p.123ff].

Volume Averaging

At First the size of the cube is calculated. Then the volume is integrated with the trapezoidal algorithm. 8000 points (20x20x20) are interpolated to calculate the average.

Advanced Extrapolation

DASY5 uses the advanced extrapolation option which is able to compensate boundary effects on E-field probes.

4.2.6 DATA STORAGE AND EVALUATION

4.2.5.1 Data Storage

The DASY5 software stores the acquired data from the data acquisition electronics as raw data (in microvolt readings from the probe sensors), together with all necessary software parameters for the data evaluation (probe calibration data, liquid parameters and device frequency and modulation data) in measurement files with the extension “DAE4”. The software evaluates the desired unit and format for output each time the data is visualized or exported. This allows verification of the complete software setup even after the measurement and allows correction of incorrect parameter settings. For example, if a measurement has been performed with a wrong crest factor parameter in the device setup, the parameter can be corrected afterwards and the data can be re-evaluated.

The measured data can be visualized or exported in different units or formats, depending on the selected probe type ([V/m], [A/m], [°C], [mW/g], [mW/cm²], [dBrel], etc.). Some of these units are not available in certain situations or show meaningless results, e.g., a SAR output in a lossless media will always be zero. Raw data can also be exported to perform the evaluation with other software packages.

4.2.7 DATA EVALUATION BY SEMCAD

The SEMCAD software automatically executes the following procedures to calculate the field units from the microvolt readings at the probe connector. The parameters used in the evaluation are stored in the configuration modules of the software:

Probe parameters:	Sensitivity	Normi, a _{i0} , a _{i1} , a _{i2}
	Conversion factor	ConvF _i
	Diode compression point	Dcp _i
Device parameters:	Frequency	f
	Crest factor	cf
Media parameters:	Conductivity	
	Density	

These parameters must be set correctly in the software. They can be found in the component documents or they can be imported into the software from the configuration files issued for the DASY5 components. In the direct measuring mode of the multimeter option, the parameters of the actual system setup are used. In the scan visualization and export modes, the parameters stored in the corresponding document files are used.

The first step of the evaluation is a linearization of the filtered input signal to account for the compression characteristics of the detector diode. The compensation depends on the input signal, the diode type and the DC-transmission factor from the diode to the evaluation electronics.

If the exciting field is pulsed, the crest factor of the signal must be known to correctly compensate for peak power. The formula for each channel can be given as:

$$V_i = U_i + U_i^2 \cdot cf / dcp_i$$

With	V _i = compensated signal of channel i	(i = x,y,z)
	U _i = input signal of channel i	(i = x, y,z)
	cf=crest factor of exciting field	(DASY parameter)
	dcp _i =diode compression point	(DASY parameter)

From the compensated input signals the primary field data for each channel can be evaluated:

$$\text{E-field probes: } E_i = (V_i / \text{Norm}_i \cdot \text{ConvF})^{1/2}$$

$$\text{H-field probes: } H_i = (V_i)^{1/2} \cdot (a_{i0} + a_{i1}f + a_{i2}f^2) / f$$

- With V_i = compensated signal of channel i (i = x,y,z)
 Norm_i = sensor sensitivity of channel i (i = x, y,z)
 [mV/(V/m)²]for E-field Probes
 ConvF = sensitivity enhancement in solution
 a_{ij} = sensor sensitivity factors for H-field probes
 f = carrier frequency [GHz]
 E_i = electric field strength of channel i in V/m
 H_i = magnetic field strength of channel i in A/m

The RSS value of the field components gives the total field strength (Hermitian magnitude):

$$E_{\text{tot}} = (E_x^2 + E_y^2 + E_z^2)^{1/2}$$

The primary field data are used to calculate the derived field units.

$$\text{SAR} = (E_{\text{tot}})^2 \cdot \sigma / (\rho \cdot 1000)$$

- With SAR = local specific absorption rate in mW/g
 E_{tot} = total field strength in V/m
 = conductivity in [mho/m] or [Siemens/m]
 = equivalent tissue density in g/cm³

Note that the density is normally set to 1 (or 1.06), to account for actual brain density rather than the density of the simulation liquid. The power flow density is calculated assuming the excitation field to be a free space field.

$$P_{\text{pwe}} = E_{\text{tot}}^2 / 3770 \text{ or } P_{\text{pwe}} = H_{\text{tot}}^2 \cdot 37.7$$

- With P_{pwe} = equivalent power density of a plane wave in mW/cm²
 E_{tot} = total field strength in V/m
 H_{tot} = total magnetic field strength in A/m

5. SYSTEM VERIFICATION PROCEDURE

5.1 TISSUE VERIFICATION

The simulating liquids should be checked at the beginning of a series of SAR measurements to determine if the dielectric parameters are within the tolerances of the specified target values. The measured conductivity and relative permittivity should be within $\pm 5\%$ of the target values. The following materials are used for producing the tissue-equivalent materials.

Tissue Type	Bactericide	DGBE	HEC	NaCl	Sucrose	Triton X-100	Water	Diethylene Glycol Mono-hexylether
Body 750	0.2	-	0.2	0.8	48.8	-	50.0	-
Body 835	0.2	-	0.2	0.9	48.5	-	50.2	-
Body 1750	-	31.0	-	0.2	-	-	68.8	-
Body 1900	-	29.5	-	0.3	-	-	70.2	-
Body 2000	-	30.0	-	0.2	-	-	69.8	-
Body 2450	-	31.4	-	0.1	-	-	68.5	-
Body 2600	-	31.8	-	0.1	-	-	68.1	-
Body 5G	-	-	-	-	-	10.7	78.6	10.7

Salt: 99+% Pure Sodium Chloride; Sugar: 98+% Pure Sucrose; Water: De-ionized, 16M + resistivity
 HEC: Hydroxyethyl Cellulose; DGBE: 99+% Di(ethylene glycol) butyl ether, [2-(2-butoxyethoxy)ethanol]
 Triton X-100(ultra pure): Polyethylene glycol mono [4-(1,1,3,3-tetramethylbutyl)phenyl]ether

Tissue Verification									
Tissue Type	Frequency (MHz)	Liquid Temp. (°C)	Conductivity (σ)	Permittivity (ϵ_r)	Targeted Conductivity (σ)	Targeted Permittivity (ϵ_r)	Deviation Conductivity (σ) (%)	Deviation Permittivity (ϵ_r) (%)	Date
Body	2450	22.4	1.972	51.262	1.95	52.7	1.13	-2.73	Oct. 18, 2018
Body	5200	22.4	5.347	47.665	5.30	49.0	0.89	-2.72	Oct. 18, 2018
Body	5300	22.4	5.488	47.439	5.42	48.9	1.25	-2.99	Oct. 18, 2018
Body	5500	22.4	5.762	47.015	5.65	48.6	1.98	-3.26	Oct. 18, 2018
Body	5600	22.4	5.894	46.817	5.77	48.5	2.15	-3.47	Oct. 18, 2018
Body	5800	22.4	6.171	46.485	6.00	48.2	2.85	-3.56	Oct. 18, 2018

Note:

- 1)The dielectric parameters of the tissue-equivalent liquid should be measured under similar ambient conditions and within 2 °C of the conditions expected during the SAR evaluation to satisfy protocol requirements.
- 2)KDB 865664 was ensured to be applied for probe calibration frequencies greater than or equal to 50MHz of the EUT frequencies.
- 3)The above measured tissue parameters were used in the DASY software to perform interpolation via the DASY software to determine actual dielectric parameters at the test frequencies. The SAR test plots may slightly differ from the table above since the DASY rounds to three significant digits.

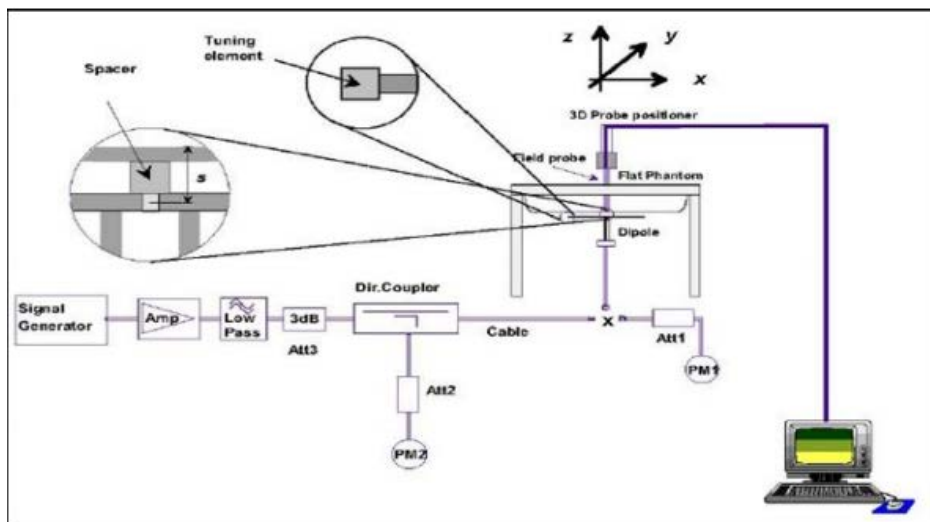
5.2 SYSTEM CHECK

The system check is performed for verifying the accuracy of the complete measurement system and performance of the software. The system check is performed with tissue equivalent material according to IEE std 1528 (described above). The following table shows system check results for all frequency bands and tissue liquids used during the tests.

System Check	Date	Frequency (MHz)	Targeted SAR-1g (W/kg)	Measured SAR-1g (W/kg)	normalized SAR-1g (W/kg)	Deviation (%)	Dipole S/N
Body	Oct. 18, 2018	2450	50.80	12.90	51.60	1.57	919
Body	Oct. 18, 2018	5200	69.80	7.32	73.20	4.87	1160
Body	Oct. 18, 2018	5300	72.30	7.48	74.80	3.46	1160
Body	Oct. 18, 2018	5500	76.20	7.75	77.50	1.71	1160
Body	Oct. 18, 2018	5600	77.70	8.11	81.10	4.38	1160
Body	Oct. 18, 2018	5800	76.60	7.96	79.60	3.92	1160

5.3 SYSTEM CHECK PROCEDURE

The system check is performed by using a system check dipole which is positioned parallel to the planar part of the SAM phantom at the reference point. The distance of the dipole to the SAM phantom is determined by a plexiglass spacer. The dipole is connected to the signal source consisting of signal generator and amplifier via a directional coupler, N-connector cable and adaption to SMA. It is fed with a power of 250 mW (below 3GHz) or 100mW (3-6GHz). To adjust this power a power meter is used. The power sensor is connected to the cable before the system check to measure the power at this point and do adjustments at the signal generator. At the outputs of the directional coupler both return loss as well as forward power are controlled during the system check to make sure that emitted power at the dipole is kept constant. This can also be checked by the power drift measurement after the test. System check results have to be equal or near the values determined during dipole calibration (target SAR in table above) with the relevant liquids and test system ($\pm 10\%$).



6. SAR MEASUREMENT VARIABILITY AND UNCERTAINTY

6.1 SAR MEASUREMENT VARIABILITY

Per KDB865664 D01 SAR measurement 100 MHz to 6 GHz, SAR measurement variability must be assessed for each frequency band, which is determined by the SAR probe calibration point and tissue-equivalent medium used for the device measurements. The additional measurements are repeated after the completion of all measurements requiring the same head or body tissue-equivalent medium in a frequency band. The test device should be returned to ambient conditions (normal room temperature) with the battery fully charged before it is re-mounted on the device holder for the repeated measurement(s) to minimize any unexpected variations in the repeated results.

- 1) Repeated measurement is not required when the original highest measured SAR is < 0.80 W/kg; steps 2) through 4) do not apply.
- 2) When the original highest measured SAR is ≥ 0.80 W/kg, repeat that measurement once.
- 3) Perform a second repeated measurement only if the ratio of largest to smallest SAR for the original and first repeated measurements is > 1.20 or when the original or repeated measurement is ≥ 1.45 W/kg (~ 10% from the 1-g SAR limit).
- 4) Perform a third repeated measurement only if the original, first or second repeated measurement is ≥ 1.5 W/kg and the ratio of largest to smallest SAR for the original, first and second repeated measurements is > 1.20 .

The same procedures should be adapted for measurements according to extremity and occupational exposure limits by applying a factor of 2.5 for extremity exposure and a factor of 5 for occupational exposure to the corresponding SAR thresholds.

The detailed repeated measurement results are shown in Section 8.2.

7. OPERATIONAL CONDITIONS DURING TEST

7.1 WIFI TEST CONFIGURATION

For WLAN SAR testing, WLAN engineering testing software installed on the DUT can provide continuous transmitting RF signal.

2.4G

Mode	802.11b	802.11g	802.11n HT20
Duty cycle	100%		
Crest factor	1		

5G

Mode	802.11a	802.11n HT20/40	802.11ac VHT20/40/80
Duty cycle	100%		
Crest factor	1		

For WiFi SAR testing, a communication link is set up with the test mode software for WiFi mode test. During the test, at the each test frequency channel, the EUT is operated at the RF continuous emission mode. The RF signal utilized in SAR measurement has 100% duty cycle and its crest factor is 1. The test procedures in KDB 248227 D01 are applied.

7.1.1 WLAN2.4G SAR TEST REQUIREMENTS

802.11b DSSS SAR Test Requirements

SAR is measured for 2.4 GHz 802.11b DSSS using either a fixed test position or, when applicable, the initial test position procedure. SAR test reduction is determined according to the following:

- 1) When the reported SAR of the highest measured maximum output power channel for the exposure configuration is ≤ 0.8 W/kg, no further SAR testing is required for 802.11b DSSS in that exposure configuration.
- 2) When the reported SAR is > 0.8 W/kg, SAR is required for that exposure configuration using the next highest measured output power channel. When any reported SAR is > 1.2 W/kg, SAR is required for the third channel; i.e., all channels require testing.

2.4 GHz 802.11g/n OFDM SAR Test Exclusion Requirements

When SAR measurement is required for 2.4 GHz 802.11g/n OFDM configurations, the measurement and test reduction procedures for OFDM are applied. SAR is not required for the following 2.4 GHz OFDM conditions.

- 1) When KDB Publication 447498 SAR test exclusion applies to the OFDM configuration.
- 2) When the highest reported SAR for DSSS is adjusted by the ratio of OFDM to DSSS specified maximum output power and the adjusted SAR is ≤ 1.2 W/kg.

SAR Test Requirements for OFDM configurations

When SAR measurement is required for 2.4 GHz 802.11g/n OFDM configurations, each stand alone. And frequency aggregated band is considered separately for SAR test reduction. In applying the initial test configuration and subsequent test configuration procedures, the 802.11 transmission configuration with the highest specified maximum output power and the channel within a test configuration with the highest measured maximum output power should be clearly distinguished to apply the procedures.

7.1.2 WLAN5G SAR TEST REQUIREMENTS

✧ U-NII-1 and U-NII-2A Band

For devices that operate in both U-NII-1 and U-NII-2A bands, when the same maximum output power is specified for both bands, begin SAR measurement in U-NII-2A band by applying the OFDM SAR requirements. If the highest reported SAR for a test configuration is ≤ 1.2 W/kg, SAR is not required for U-NII-1 band for that configuration (802.11 mode and exposure condition); otherwise, both bands are tested independently for SAR. When different maximum output power is specified for the bands, begin SAR measurement in the band with higher specified maximum output power. The highest reported SAR for the tested configuration is adjusted by the ratio of lower to higher specified maximum output power for the two bands. When the adjusted SAR is ≤ 1.2 W/kg, SAR is not required for the band with lower maximum output power in that test configuration; otherwise, both bands are tested independently for SAR.

✧ U-NII-2C, U-NII-3 Bands

The frequency range covered by these bands is 380 MHz (5.47 – 5.85 GHz), which requires a minimum of at least two SAR probe calibration frequency points to support SAR measurements. When Terminal Doppler Weather Radar (TDWR) restriction applies, the channels at 5.60 – 5.65 GHz in U-NII-2C band must be disabled with acceptable mechanisms and documented in the equipment certification.

Unless band gap channels are permanently disabled, they must be considered for SAR testing. To maintain SAR measurement accuracy and to facilitate test reduction, the channels in U-NII-2C band above 5.65 GHz may be grouped with the 5.8 GHz channels in U-NII-3 or §15.247 band to enable two SAR probe calibration frequency points to cover the bands, including the band gap channels.¹¹ When band gap channels are supported and the bands are not aggregated for SAR testing, band gap channels must be considered independently in each band according to the normally required OFDM SAR measurement and probe calibration frequency points requirements.

7.1.3 OFDM TRANSMISSION MODE AND SAR TEST CHANNEL SELECTION

For the 2.4GHz and 5GHz bands, when the same maximum output power was specified for multiple OFDM transmission mode configurations in a frequency band or aggregated band, SAR is measured using the configuration with the largest channel bandwidth, lowest order modulation and lowest data rate. When the maximum output power of a channel is the same for equivalent OFDM configurations (for example 802.11a, 802.11n and 802.11ac, or 802.11g and 802.11n, with the same channel bandwidth, modulation, and data rate, etc.), the lower order 802.11 mode (i.e. 802.11a then 802.11n and 802.11ac, or 802.11g then 802.11n) is used for SAR measurement. When the maximum output power are the same for multiple test channels, either according to the default or additional power measurement requirements, SAR is measured using the channel closest to the middle of the frequency band or aggregated band. When there are multiple channels with the same maximum output power, SAR is measured using the higher number channel.

7.1.4 INITIAL TEST CONFIGURATION PROCEDURE

For OFDM, in both 2.4G and 5GHz bands, an initial test configuration is determined for each frequency band and aggregated band, according to the transmission mode with the highest maximum output power specified for SAR measurements. When the same maximum output power is specified for multiple OFDM transmission mode configurations in a frequency band or aggregated band, SAR is measured using the configuration(s) with the largest channel bandwidth, lowest order modulation, and lowest data rate. If the average RF output powers of the highest identical transmission modes are within 0.25 dB of each other, mid channel of the transmission mode with highest average RF output powers is the initial test channel. Otherwise, the channel of the transmission mode with the highest average RF output power will be the initial test configuration.

When the reported SAR is ≤ 0.8 W/kg, no additional measurements on other test channels are required. Otherwise, SAR is evaluated using the subsequent highest average RF output channel until the reported SAR result is ≤ 1.2 W/kg or all channels are measured. When there are multiple untested channels having the same subsequent highest average RF output power, the channel with higher frequency from the lowest 802.11 mode is considered for SAR measurement.

7.2 TEST POSITION

7.2.1 BODY TEST CONFIGURATION

Test all USB orientations [see figure below: (A) Horizontal-Up, (B) Horizontal-Down, (C) Vertical-Front, and (D) Vertical-Back and Tip with a device-to-phantom separation distance of 5 mm.

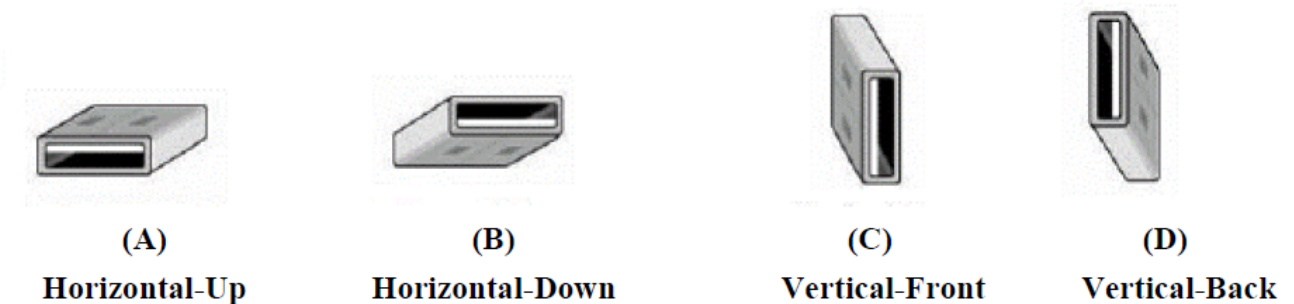


Fig 7.2.1 USB Connector Orientations Implemented on Laptop Computers

8. TEST RESULT

8.1 CONDUCTED POWER RESULTS

8.1.1 CONDUCTED POWER MEASUREMENTS OF WIFI 2.4G

2.4G	Mode	Channel	Frequency(MHz)	Data Rate(Mbps)	Tune up	Average Power(dBm)	SAR Test(Yes/No)
	802.11b		1	2412	1	18.00	17.96
6			2437	18.00		17.92	Yes
11			2462	18.00		17.68	Yes
802.11g		1	2412	6	18.00	17.92	No
		6	2437		18.00	17.91	No
		11	2462		18.00	17.92	No
802.11n HT20		1	2412	MCS0	18.00	17.89	No
		6	2437		18.00	17.96	No
		11	2462		18.00	17.95	No
802.11n HT40		3	2422	MCS0	18.00	17.78	No
		6	2437		18.00	17.79	No
		9	2452		18.00	17.66	No
802.11ac HT20		1	2412	MCS0	18.00	17.83	No
		6	2437		18.00	17.88	No
		11	2462		18.00	17.91	No
802.11ac HT40		3	2422	MCS0	18.00	17.72	No
		6	2437		18.00	17.75	No
		9	2452		18.00	17.61	No

Note:

- 1) The Average conducted power of WiFi is measured with RMS detector.
- 2) Per KDB248227 D01, for WiFi 2.4GHz, the highest measured maximum output power Channel for DSSS modes(802.11b) was selected for SAR measurement. SAR for OFDM modes(2.4GHz 802.11g/n) was not required When the highest reported SAR for DSSS is adjusted by the ratio of OFDM modes(802.11g/n) to DSSS modes(802.11b) specified maximum output power and the adjusted SAR is ≤ 1.2 W/kg.

8.1.2 CONDUCTED POWER MEASUREMENTS OF WIFI 5.2G

Band	Mode	Channel	Frequency(MHz)	Data Rate(Mbps)	Tune-up	Average Power(dBm)	SAR Test(Yes/No)
5.2G	802.11a	36	5180	6	18.00	17.23	No
		40	5200		18.00	17.71	No
		44	5220		18.00	17.37	No
		48	5240		18.00	17.65	No
	802.11n HT20	36	5180	MCS0	18.00	17.75	No
		40	5200		18.00	17.33	No
		44	5220		18.00	17.32	No
		48	5240		18.00	17.65	No
	802.11n HT40	38	5190	MCS0	17.00	16.78	No
		46	5230		18.00	17.55	No
	802.11ac HT20	36	5180	MCS0	18.00	17.69	No
		40	5200		18.00	17.38	No
		44	5220		18.00	17.41	No
		48	5240		18.00	17.72	No
	802.11ac HT40	38	5190	MCS0	17.00	16.71	No
		46	5230		18.00	17.58	No
802.11ac VH80	42	5210	MCS0	15.00	14.03	No	

8.1.3 CONDUCTED POWER MEASUREMENTS OF WIFI 5.3G

Band	Mode	Channel	Frequency(MHz)	Data Rate(Mbps)	Tune-up	Average Power(dBm)	SAR Test(Yes/No)
5.3G	802.11a	52	5260	6	18.00	17.83	Yes
		56	5280		18.00	17.76	No
		60	5300		18.00	17.81	Yes
		64	5320		18.00	17.77	Yes
	802.11n HT20	52	5260	MCS0	18.00	17.53	No
		56	5280		18.00	17.51	No
		60	5300		18.00	17.64	No
		64	5320		18.00	17.53	No
	802.11n HT40	54	5270	MCS0	18.00	17.72	No
		62	5310		16.00	15.23	No
	802.11ac HT20	52	5260	MCS0	18.00	17.61	No
		56	5280		18.00	17.52	No
		60	5300		18.00	17.59	No
		64	5320		18.00	17.54	No
	802.11ac HT40	54	5270	MCS0	18.00	17.73	No
		62	5310		16.00	15.15	No
	802.11ac VH80	58	5290	MCS0	13.00	12.14	No

8.1.4 CONDUCTED POWER MEASUREMENTS OF WIFI 5.6G

Band	Mode	Channel	Frequency(MHz)	Data Rate(Mbps)	Tune-up	Average Power(dBm)	SAR Test(Yes/No)
5.6G	802.11a	100	5500	6	18.00	17.82	Yes
		104	5520		18.00	17.71	No
		108	5540		18.00	17.64	No
		112	5560		18.00	17.68	No
		116	5580		18.00	17.76	Yes
		132	5660		18.00	17.63	No
		136	5680		18.00	17.75	No
		140	5700		18.00	17.95	Yes
	802.11n HT20	100	5500	MCS0	18.00	17.31	No
		104	5520		18.00	17.28	No
		108	5540		18.00	17.33	No
		112	5560		18.00	17.41	No
		116	5580		18.00	17.45	No
		132	5660		18.00	17.22	No
		136	5680		18.00	17.26	No
		140	5700		18.00	17.37	No
	802.11n HT40	102	5510	MCS0	18.00	17.36	No
		134	5670		18.00	17.59	No
	802.11ac HT20	100	5500	MCS0	18.00	17.29	No
		104	5520		18.00	17.25	No
		108	5540		18.00	17.26	No
		112	5560		18.00	17.33	No
		116	5580		18.00	17.41	No
		132	5660		18.00	17.38	No
		136	5680		18.00	17.34	No
		140	5700		18.00	17.35	No
	802.11ac HT40	102	5510	MCS0	18.00	17.46	No
		134	5670		18.00	17.62	No
	802.11ac VH80	106	5530	MCS0	15.00	14.13	No
		138	5690		18.00	17.58	No

8.1.5 CONDUCTED POWER MEASUREMENTS OF WIFI 5.8G

Band	Mode	Channel	Frequency(MHz)	Data Rate(Mbps)	Tune-up	Average Power(dBm)	SAR Test(Yes/No)
5.8G	802.11a	149	5745	6	18.00	17.85	Yes
		153	5765		18.00	17.78	No
		157	5785		18.00	17.84	Yes
		161	5805		18.00	17.63	No
		165	5825		18.00	17.67	Yes
	802.11n HT20	149	5745	MCS0	18.00	17.66	No
		153	5765		18.00	17.62	No
		157	5785		18.00	17.72	No
		161	5805		18.00	17.58	No
		165	5825		18.00	17.63	No
	802.11n HT40	151	5755	MCS0	18.00	17.66	No
		159	5795		18.00	17.75	No
	802.11ac HT20	149	5745	MCS0	18.00	17.68	No
		153	5765		18.00	17.63	No
		157	5785		18.00	17.74	No
		161	5805		18.00	17.65	No
		165	5825		18.00	17.66	No
	802.11ac HT40	151	5755	MCS0	18.00	17.61	No
		159	5795		18.00	17.66	No
	802.11ac VH80	155	5775	MCS0	18.00	17.62	No

8.2 SAR TEST RESULTS

General Notes:

- 1) Per KDB447498 D01, all measurement SAR results are scaled to the maximum tune-up tolerance limit to demonstrate compliant.
- 2) Per KDB447498 D01, testing of other required channels within the operating mode of a frequency band is not required when the reported 1-g or 10-g SAR for the mid-band or highest output power channel is: ≤ 0.8 W/kg or 2.0 W/kg, for 1-g or 10-g respectively, when the transmission band is ≤ 100 MHz. When the maximum output power variation across the required test channels is $> \frac{1}{2}$ dB, instead of the middle channel, the highest output power channel must be used.
- 3) Per KDB865664 D01, for each frequency band, repeated SAR measurement is required only when the measured SAR is ≥ 0.8 W/kg; if the deviation among the repeated measurement is $\leq 20\%$, and the measured SAR < 1.45 W/kg, only one repeated measurement is required.
- 4) Per KDB941225 D06, the DUT Dimension is bigger than 9 cm x 5 cm, so 10mm is chosen as the test separation distance for Hotspot mode. When the antenna-to-edge distance is greater than 2.5cm, such position does not need to be tested.
- 5) Per KDB648474 D04, SAR is evaluated without a headset connected to the device. When the standalone reported body-worn SAR is ≤ 1.2 W/kg, no additional SAR evaluations using a headset are required.
- 6) Per KDB865664 D02, SAR plot is only required for the highest measured SAR in each exposure configuration, wireless mode and frequency band combination; Plots are also required when the measured SAR is > 1.5 W/kg, or > 7.0 W/kg for occupational exposure. The published RF exposure KDB procedures may require additional plots; for example, to support SAR to peak location separation ratio test exclusion and/or volume scan post-processing.

WLAN Notes:

1. For exposure conditions with multiple test positions, such as handset operating next to the ear, devices with hotspot mode, procedures for initial test position can be applied. Using the transmission mode determined by the DSSS procedure or initial test configuration, area scans are measured for all positions in an exposure condition. The test position with the highest extrapolated(peak) SAR is used as the initial test position. When the reported SAR of the initial test position is ≤ 0.4 W/kg, further SAR measurement is not required for the other (remaining) test positions. Otherwise, SAR is evaluated at the subsequent highest peak SAR position until the reported SAR result is ≤ 0.8 W/kg or all test positions are measured.
2. Justification for test configurations for WLAN per KDB Publication 248227 for 2.4GHz WIFI single transmission chain operations, the highest measured maximum output power Channel for DSSS was selected for SAR measurement. SAR for OFDM modes(2.4GHz 802.11g/n) was not required due to the maximum allowed powers and the highest reported DSSS SAR. See Section 7.1.4 for more information.
3. Justification for test configurations for WLAN per KDB Publication 248227 for 5GHz WIFI single transmission chain operations, the initial test configuration was selected according to the transmission mode with the highest maximum allowed power. Other transmission mode were not investigated since the highest reported SAR for initial test configuration adjusted by the ratio of maximum output powers is less than 1.2W/kg. See Section 7.1.4 for more information.

8.2.1 WWAN SAR MEASUREMENT RESULT

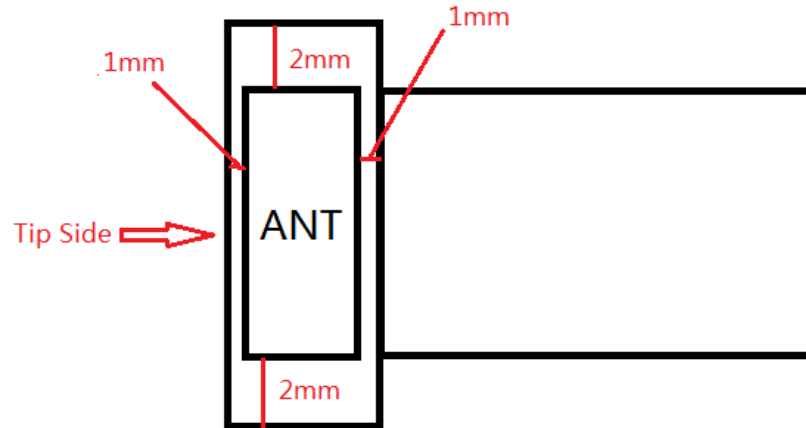
Test No.	Band	Channel	Test Position	Separation Distance (cm)	Data Rate	Maximum Tune-up (dBm)	Conducted Power (dBm)	Power Drift	SAR 1g	Reported 10g SAR
T01	802.11b	6	Horizontal-Up	0.5	1	18	17.96	-0.09	0.556	0.561
T02	802.11b	6	Horizontal-Down	0.5	1	18	17.96	0.12	0.463	0.467
T03	802.11b	6	Vertical-Front	0.5	1	18	17.96	0.03	0.144	0.145
T04	802.11b	6	Vertical-Back	0.5	1	18	17.96	-0.17	0.206	0.208
T05	802.11b	6	Tip Side	0.5	1	18	17.96	-0.06	0.120	0.121
T06	802.11b	1	Horizontal-Up	0.5	1	18	17.92	-0.02	0.376	0.383
T07	802.11b	11	Horizontal-Up	0.5	1	18	17.68	-0.04	0.595	0.640
T08	802.11a	52	Horizontal-Up	0.5	6	18	17.83	-0.03	0.093	0.096
T09	802.11a	52	Horizontal-Down	0.5	6	18	17.83	0.02	0.059	0.062
T10	802.11a	52	Vertical-Front	0.5	6	18	17.83	0.09	0.016	0.017
T11	802.11a	52	Vertical-Back	0.5	6	18	17.83	-0.03	0.044	0.046
T12	802.11a	52	Tip Side	0.5	6	18	17.83	-0.9	0.014	0.015
T13	802.11a	60	Horizontal-Up	0.5	6	18	17.81	-0.07	0.028	0.029
T14	802.11a	64	Horizontal-Up	0.5	6	18	17.77	0.06	0.136	0.143
T15	802.11a	140	Horizontal-Up	0.5	6	18	17.95	-0.08	0.195	0.197
T16	802.11a	140	Horizontal-Down	0.5	6	18	17.95	0.02	0.130	0.132
T17	802.11a	140	Vertical-Front	0.5	6	18	17.95	0.01	0.064	0.064
T18	802.11a	140	Vertical-Back	0.5	6	18	17.95	0.07	0.021	0.021
T19	802.11a	140	Tip Side	0.5	6	18	17.95	-0.08	0.133	0.135
T20	802.11a	100	Horizontal-Up	0.5	6	18	17.76	0.08	0.293	0.310
T21	802.11a	116	Horizontal-Up	0.5	6	18	17.82	-0.03	0.379	0.395
T22	802.11a	149	Horizontal-Up	0.5	6	18	17.85	-0.04	0.111	0.115
T23	802.11a	149	Horizontal-Down	0.5	6	18	17.85	0.06	0.300	0.311
T24	802.11a	149	Vertical-Front	0.5	6	18	17.85	0.05	0.030	0.031
T25	802.11a	149	Vertical-Back	0.5	6	18	17.85	0.05	0.047	0.048
T26	802.11a	149	Tip Side	0.5	6	18	17.85	-0.01	0.111	0.115
T27	802.11a	157	Horizontal-Down	0.5	6	18	17.84	-0.02	0.112	0.116
T28	802.11a	165	Horizontal-Down	0.5	6	18	17.67	0.06	0.107	0.115

Note: The value with boldface is the maximum SAR Value of each test band.

8.3 MULTIPLE TRANSMITTER EVALUATION

The following tables list information which is relevant for the decision if a simultaneous transmit evaluation is necessary according to FCC KDB 447498D01 General RF Exposure Guidance v06.

The location of the antennas inside the EUT is shown as below picture:



Per FCC KDB 447498D01, SAR compliance for simultaneous transmission must be considered when the maximum duration of overlapping transmissions, including network hand-offs, is greater than 30 seconds. This device contains multiple transmitters that may operate simultaneously, and therefore requires a simultaneous transmission analysis.

The product is only support one tx antenna, not support the mimo tx.

APPENDIX

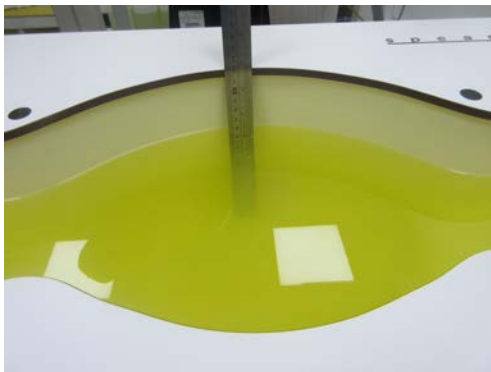
1. Test Layout

Specific Absorption Rate Test Layout

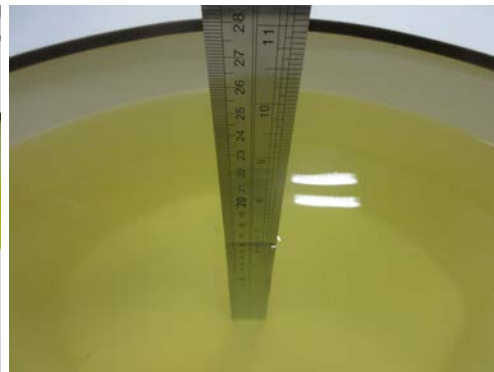


Liquid depth in the flat Phantom ($\geq 15\text{cm}$ depth)

Body(2450MHz)_15.4cm



Body (5G)_16.2cm



Appendix A. SAR Plots of System Verification

(Pls See Appendix A.)

Appendix B. SAR Plots of SAR Measurement

(Pls See Appendix B.)

Appendix C. Calibration Certificate for Probe and Dipole

(Pls See Appendix C.)

Appendix D. Photographs of the Test Set-Up

(Pls See Appendix D.)

End of Test Report