

Figure 7
Inside of the EUT



Figure 8
Inside of the EUT



Figure 9
Inside of the EUT

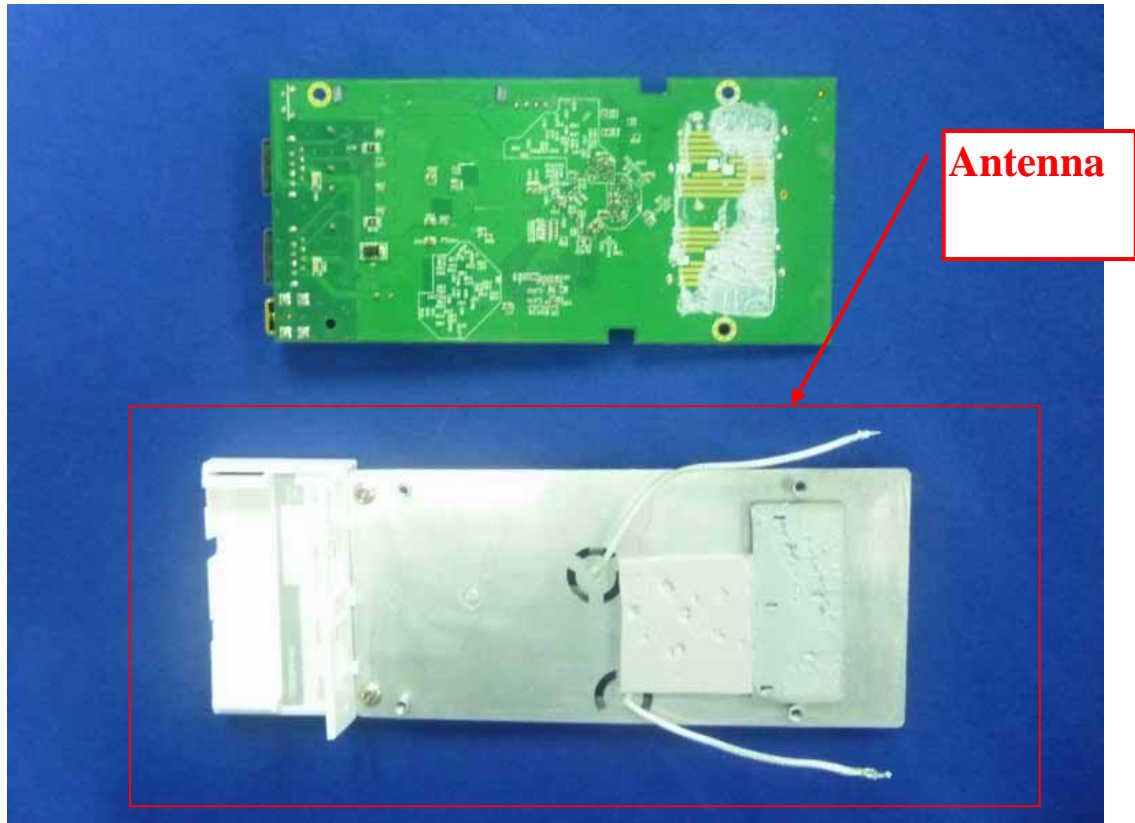


Figure 10
Components Side of the PCB



Figure 11
Components Side of the PCB

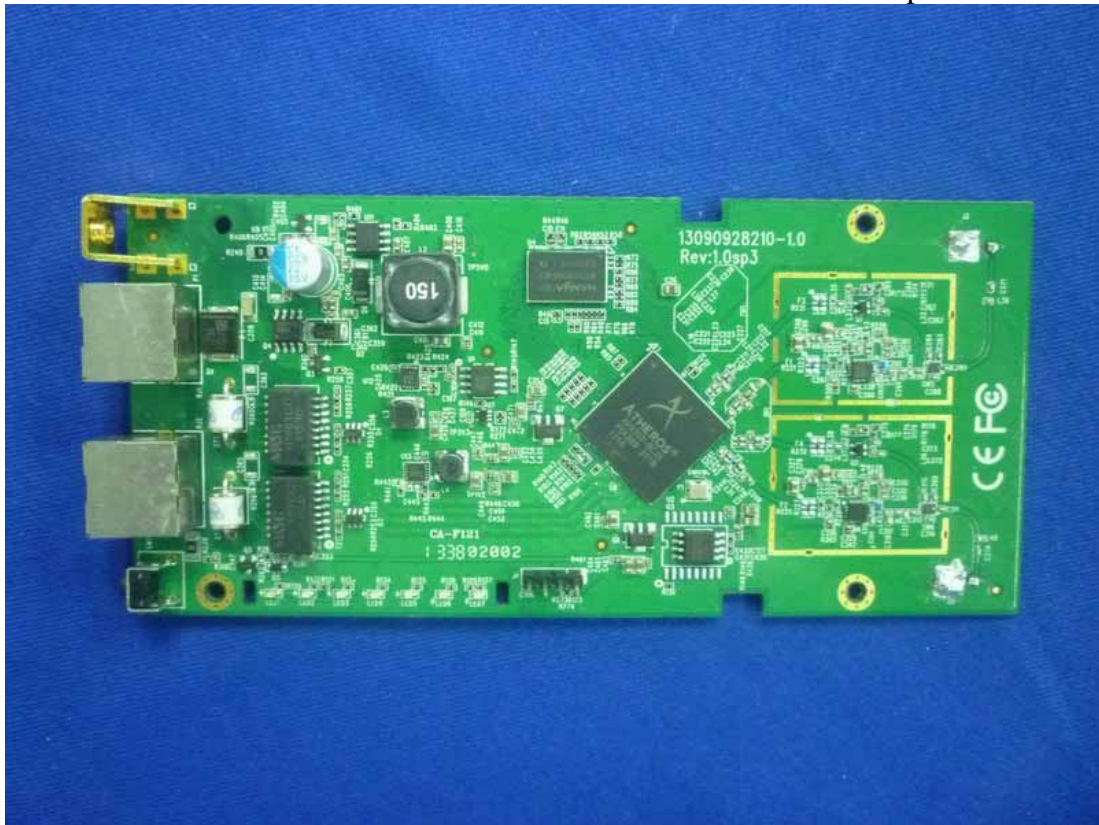


Figure 12
Components Side of the PCB

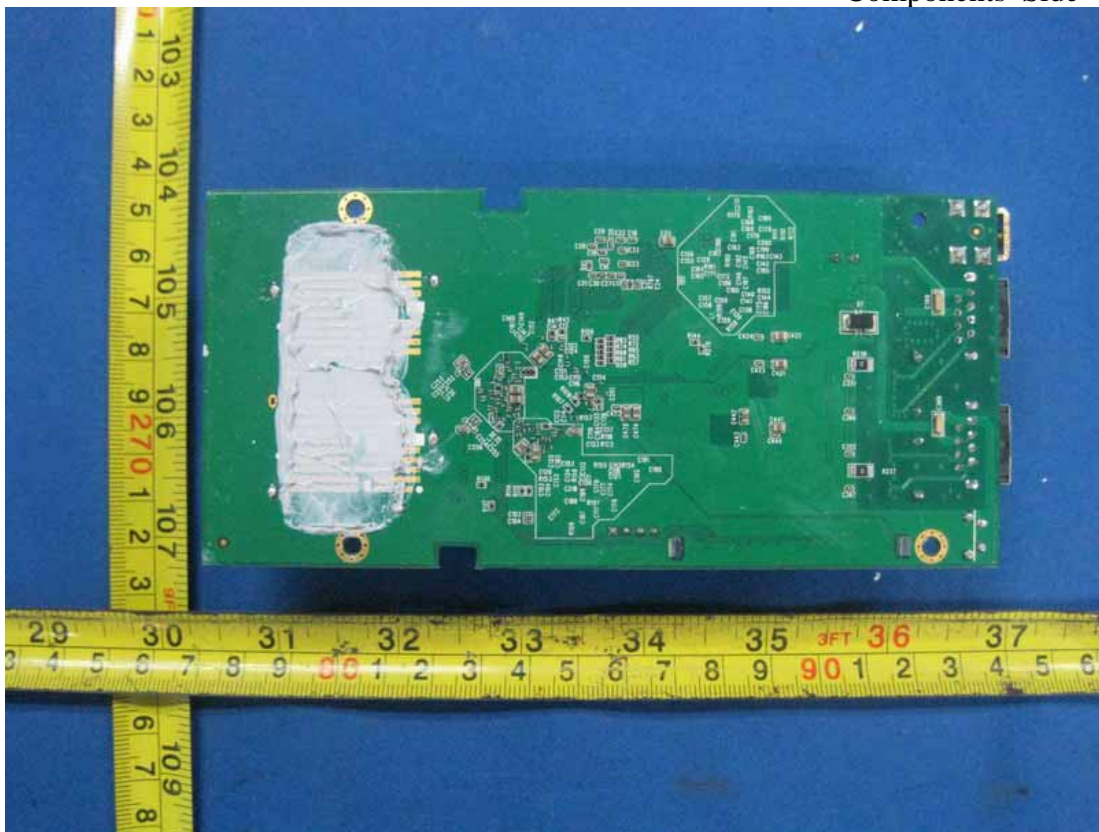


Figure 13
General Appearance of the Adapter



Figure 14
General Appearance of the Adapter

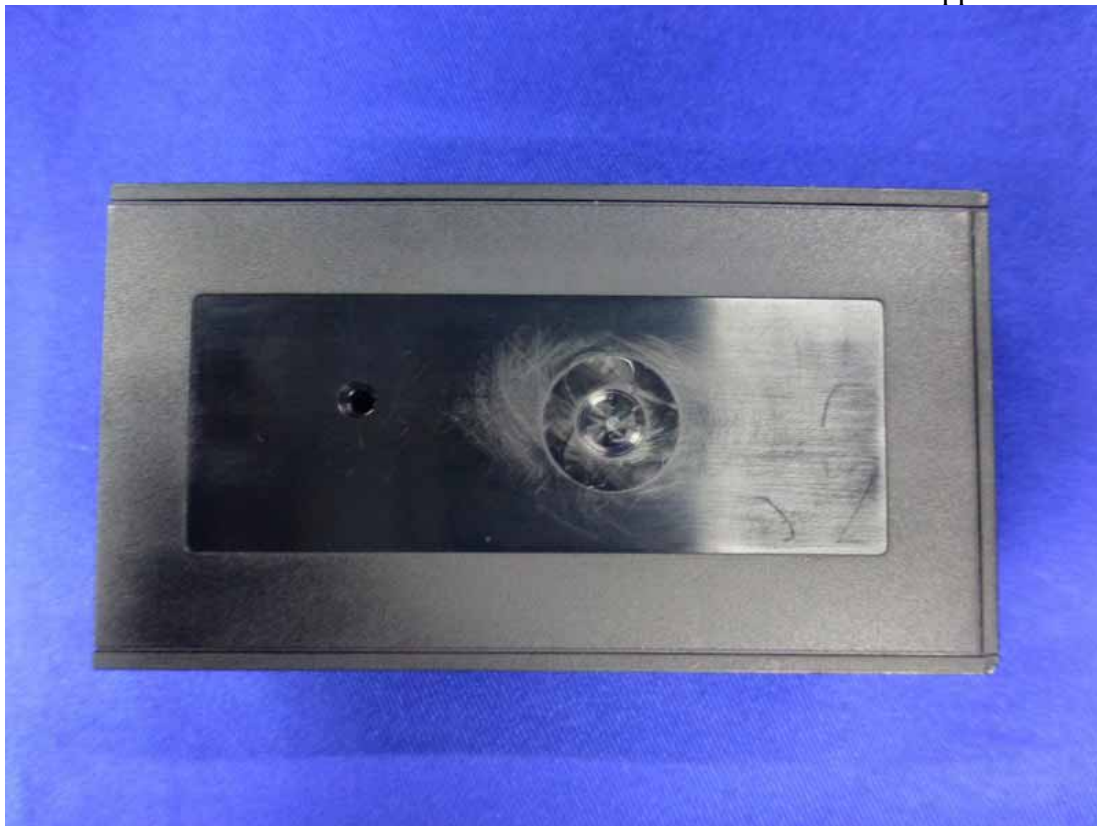


Figure 15
General Appearance of the Adapter



Figure 16
General Appearance of the Adapter



Figure 17
General Appearance of the Adapter



Figure 18
General Appearance of the Adapter

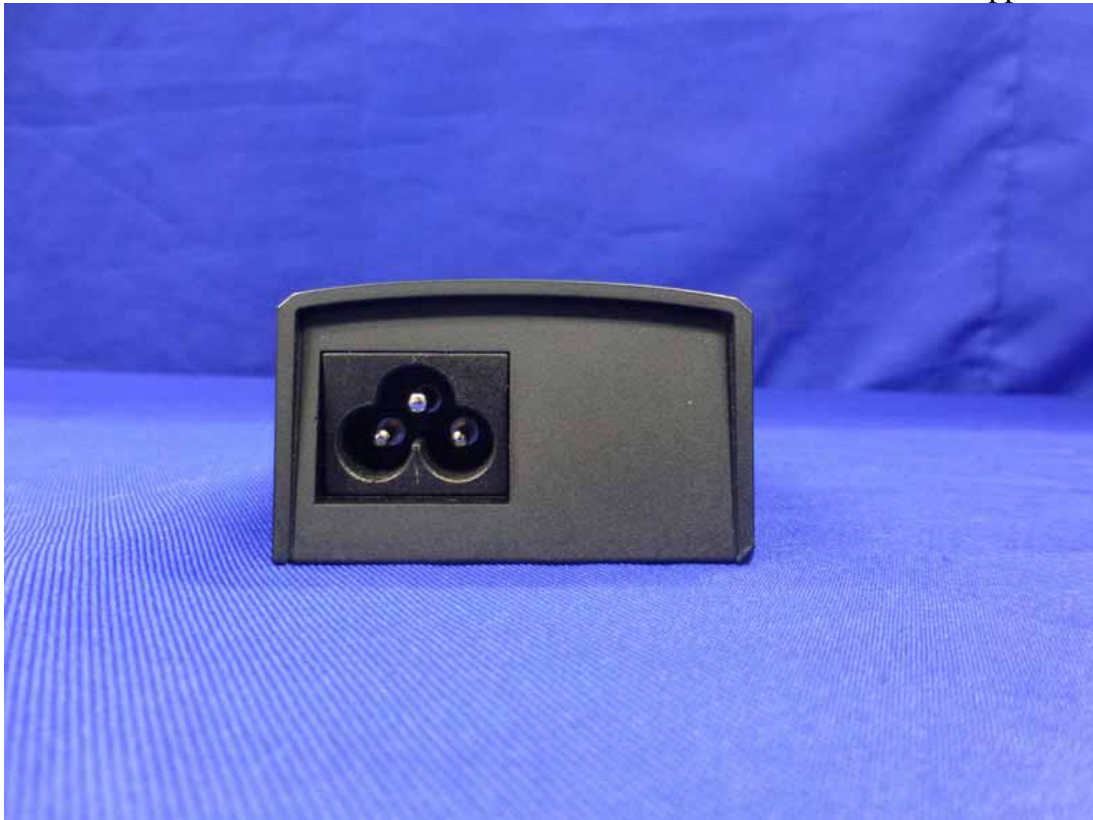


Figure 19
Inside of the Adapter

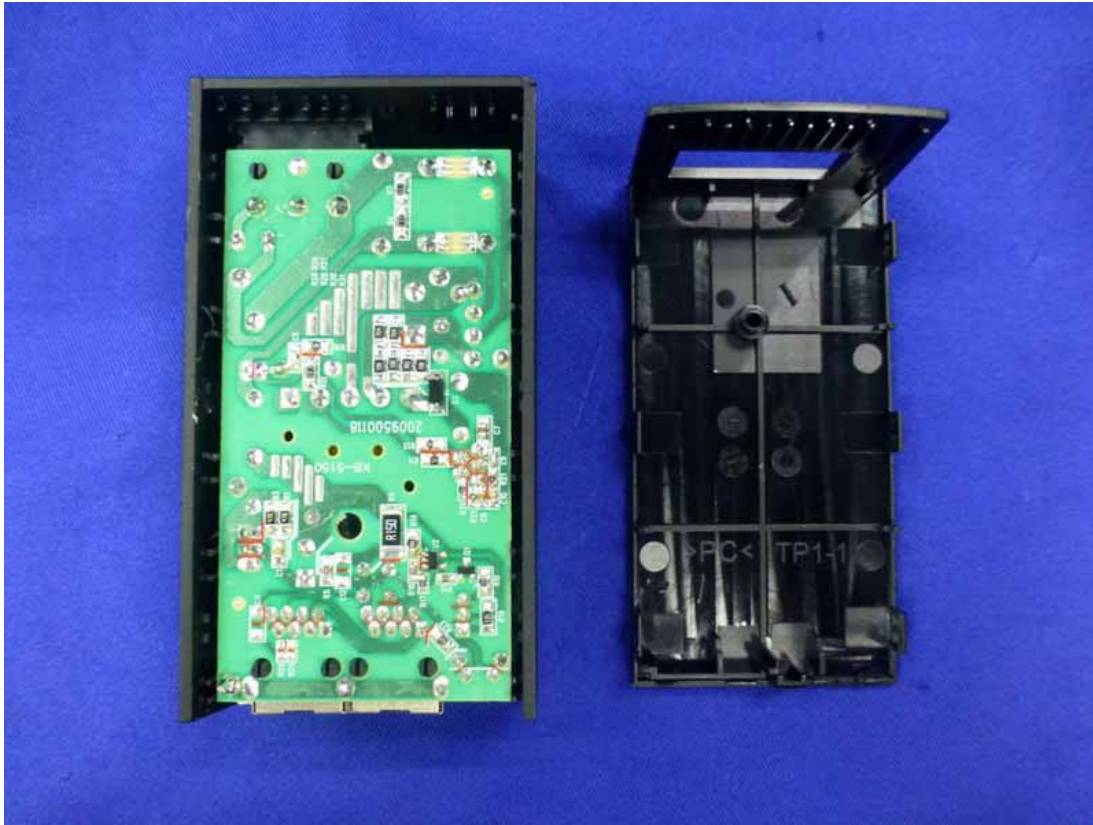


Figure 20
Inside of the Adapter

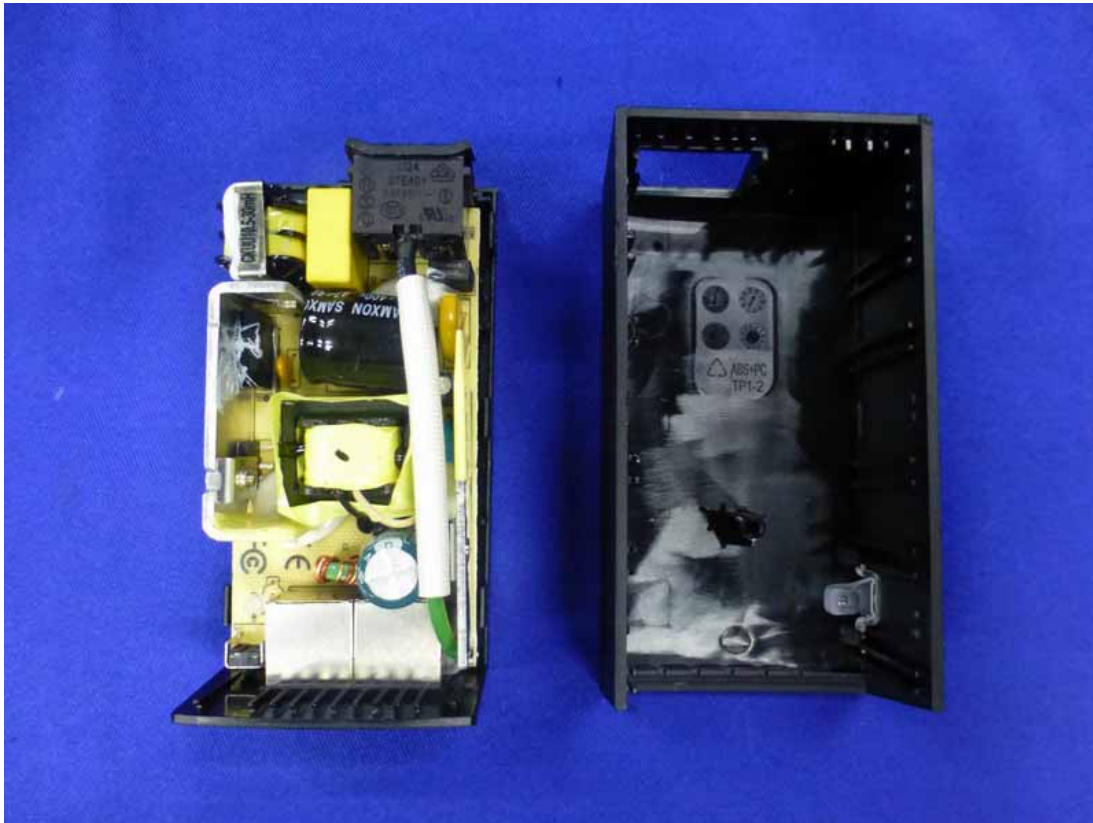


Figure 21
Inside of the Adapter



Figure 22
Inside of the Adapter

