



**MOVON**

[www.movon.co.kr](http://www.movon.co.kr)

MOVON Corp., Korea. All rights reserved.  
MOVON and MOVON logo are registered trademarks of  
MOVON Corporation and our Bluetooth products.  
Bluetooth is a trademark owned by Bluetooth SIG, INC.  
and is used by MOVON Corp., Korea under license.

Designed by MOVON Korea

07-1-mv- MF330 -1

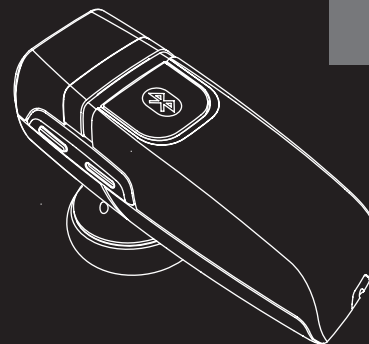


**Bluetooth**  
Wireless Headset  
MF330

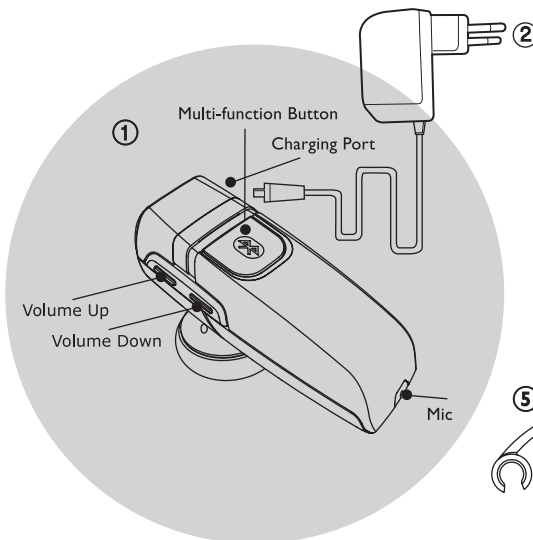


Wireless Headset MF330  
User Manual

Trendy micro  
MF330



English



#### \* Charging a headset



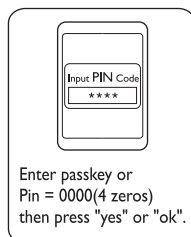
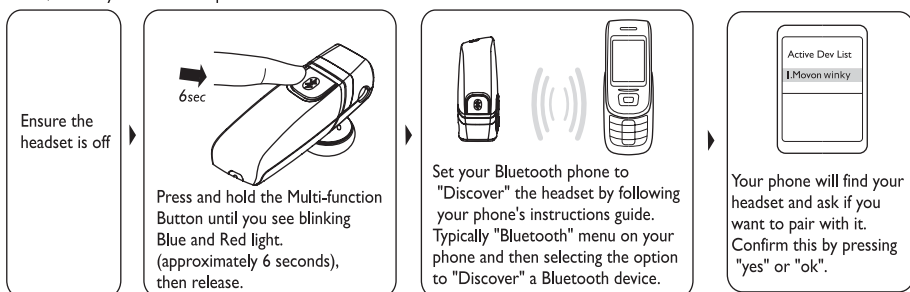
#### \* Package Contents

1. Bluetooth headset
2. A/C power adapter
3. Spare Ear-Piece
4. User Manual
5. Flexible ear hook (\*optional)

## \* "Pair" to your Bluetooth phone

English

Before you use your headset for the first time, you should pair your headset with the device that you want to use it with, such as your Bluetooth phone.



### \*Auto Connection:

Once you pair the headset with a device, the Headset will be automatically connected to the device whenever you turn the Headset on.

### IMPORTANT!

When the headset paired with mobile phone, the indication light will flash 2 times every 5seconds. If failed, the blue indicator light will flash one time every 5 seconds.

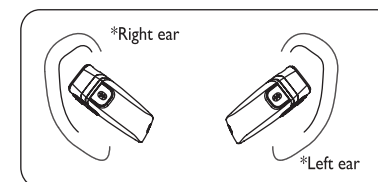
## 1 Turning headset on/off

## \* OPERATION \*

English

|                     | How to act   | Tones           | Indicators  |
|---------------------|--|-----------------|---|
| Turning headset on  | Press and hold the Multi-function Button for 3 seconds until you see a Blue indicator flashing, then release it. | Turn-On melody  | The Blue indicator will flash while the power is on |
| Turning off headset | Press and hold the Multi-function Button for 4 seconds until you see a Red indicator flashing, then release it.  | Turn-Off melody | After Red indicator flash, it will turned off.      |

## 2 Wearing Your Headset



## 3 Making a call

English

### \* Using phone's keypad

- Dial number on keypad.
- Press phone's 'SEND/CALL' key
- Press Multi-function Button for 2 seconds, then the call will be transferred to your headset

### \* Using voice dialing

Please make sure if your mobile phone supports voice dialing function. If yes, please set up voice tags on your mobile phone first.

- Press the Multi-function Button for 2 seconds until you hear short beep. After then release the button
- The say the name of person who wants to call
- You can hear melody when call is made

Note: Please record voice tag via your headset for better reception.

### \* Last Number dialing

- Press the Multi-function Button briefly.
- You can hear the connection melody

## 4 Ending a call

Press the Multi-function Button briefly from the headset while you are on the line. You can also end your call from your mobile

## 5 Reject an incoming call

Press and hold Multi-function Button for 2 seconds and release button when you hear beep sound.

## 6 Answering a call

Press the Multi-function Button briefly when you receive an incoming call.

## 7 Transferring a call

- Headset to phone: Press Multi-function Button for 2 seconds
- Phone to headset: Press Multi-function Button for 2 seconds



## 8 Call-Waiting (3way calling)

Before using 3 way calling with your headset, you must ensure that your phone supports "Handsfree Profile". And it is always assumed that the "call hold and/or multiparty" services are available in the network.

- Press and hold volume-down button until you hear short beep 3 times (approximately 4seconds), then you can accept receiving waiting (incoming) call and end active call.
- Press and hold volume-up button until you hear short beep 3 times (approximately 4 seconds), then you can accept waiting (incoming) call and hold active call.

## 9 Volume control & Mute function

- You can adjust volume by pressing volume up and volume down button.
- Press and hold volume down button for 2 seconds, then the headset MIC will be muted by being followed by the melody every 10 seconds. Deactivate mute function by press the volume up button or the volume down button.

## 10 Summary of button operation

English

| BUTTON         | ACTION               | HEADSET STATUS               |                  |                                    |
|----------------|----------------------|------------------------------|------------------|------------------------------------|
|                |                      | Standby<br>(No Calls Active) | Incoming Call    | I Call Active                      |
| Multi-function | Quick Press (1 Beep) | Last Number Redial           | Answer Call      | Close Call                         |
|                | 2 Seconds (2 Beeps)  | Initiate Voice Dialling      | Reject Call      | Transfer Active Call to/from Phone |
|                | 4 Seconds (3 Beeps)  | Turn Headset OFF             | Turn Headset OFF | Turn Headset OFF                   |
| Volume UP      | Quick Press (1 Beep) | Increase Volume              | Increase Volume  | Increase Volume                    |
|                | 2 Seconds (2 Beeps)  | —                            | —                | —                                  |
|                | 4 Seconds (3 Beeps)  | —                            | —                | Hold/Resume Call                   |
| Volume DOWN    | Quick Press (1 Beep) | Decrease Volume              | Decrease Volume  | Decrease Volume                    |
|                | 2 Seconds (2 Beeps)  | —                            | —                | Microphone Mute                    |
|                | 4 Seconds (3 Beeps)  | —                            | —                | Close Call                         |

| BUTTON         | ACTION               | HEADSET STATUS                    |                                    |
|----------------|----------------------|-----------------------------------|------------------------------------|
|                |                      | I Call Active,<br>I Incoming Call | I Call Active,<br>I Call on Hold   |
| Multi-function | Quick Press (1 Beep) | —                                 | —                                  |
|                | 2 Seconds (2 Beeps)  | —                                 | Transfer Active Call to/from Phone |
|                | 4 Seconds (3 Beeps)  | Turn Headset OFF                  | Turn Headset OFF                   |
| Volume UP      | Quick Press (1 Beep) | Increase Volume                   | Increase Volume                    |
|                | 2 Seconds (2 Beeps)  | —                                 | —                                  |
|                | 4 Seconds (3 Beeps)  | Answer Incoming, Hold Active      | Swap calls                         |
| Volume DOWN    | Quick Press (1 Beep) | Decrease Volume                   | Decrease Volume                    |
|                | 2 Seconds (2 Beeps)  | —                                 | —                                  |
|                | 4 Seconds (3 Beeps)  | Answer Incoming, Close Active     | Close Active, Retrieve Held Call   |

Please Note: The desired function is initiated only when the button is released, so it is important that the button is held for the correct period of time

\* Specifications and features are subject to change without notice.

## 11 Safety and General Information

English

1. Please read this guidebook carefully and follow the instruction
2. To avoid any damage or malfunction of the unit do not drop unit from high places
3. Keep away unit from humidity, water and any other liquid. And if the unit is exposed by water, moisture and other liquid directly then don't operate it to avoid any electrical shock, explosion and damage of the unit.
4. Do not place or keep the unit near the heat sources such as direct sun light, radiators, stoves or other apparatus which produce heat. It may cause explosion, degrade of performance and reduce battery life.
5. Do not modify, repair & disassemble unit at discretion (Especially battery: It may cause an explosion)
6. Do not place the heavy objects on the unit.
7. Use only supplied and approved charger.
8. Replacement or service must be done by qualified service center or manufacturer.
9. Unplug this unit when unused for long periods of time or during lightening storms.

### ⚠ CAUTIONS: ELECTRIC SHOCK HAZARD

The battery used in this device may present a risk of fire or chemical burn if mis-treated.

## 12 FCC & IC STATEMENT

English

"This device complies with Part 15 of the FCC Rules."

Operation is subject to the following two conditions:

- (1) This device may not cause harmful interference, and
- (2) this device must accept any interference received, including interference that may cause undesired operation.

Note: The manufacturer is not responsible for ANY interference, for example RADIO or TV interference, caused by unauthorized modifications to this equipment.

Such modifications could void the user's authority to operate the equipment.

## 13 EU

This product is CE marked according to the provision of the R&TTE Directive (99/5/EC). Here by MOVON Corporation, declares that this product is in compliance with the essential requirements and other relevant provisions of Directive 1999/5/EC. For further information please visit [www.movon.co.kr](http://www.movon.co.kr)

You can find the DoC from following website: [www.movon.co.kr/certificate/rtte](http://www.movon.co.kr/certificate/rtte)

Please note that this product uses radio frequency bands not harmonized within EU. Within the EU this product is intended to be used in Austria, Belgium, Denmark, Finland, France, Germany, Greece, Ireland, Italy, Luxembourg, The Netherlands, Portugal, Spain, Sweden, United Kingdom and within EFTA in Iceland, Norway and Switzerland.

Bluetooth is a trademark owned by the Bluetooth SIG, Inc.

## 14 Warranty

English

The condition of this warranty and our responsibilities under this warranty are as follows:

Supplier's warranty is non-transferable. And this warranty is limited to the original purchaser only.

- " You must be able to prove the date of original purchase of the unit with a dated receipt.
- " The warranty is not applicable if the product has been subject to physical abuse, improper installation, modification or repair by unauthorized third party.
- " The responsibility of supplier's products shall be limited to the repair or replacement of the product at it's sole discretion.
- " Specifically exempt from any warranty are limited-life consumable components subject to normal wear and tear such as batteries, decorates and other accessories.
- " A supplier will not take any responsibility if the failure of the unit has resulted from accident, abuse, misuse, or any unauthorized repair, modification or disassemble.
- " Modification and repair of the unit should be done by authorized and qualified service personnel, Center or returned to the manufacturer
- " This warranty gives you specific legal rights, and you may also have other rights which vary under local laws.

## 15 WEEE Symbol Information

English



### Correct Disposal of This Product (Waste Electrical & Electronic Equipment)

(Applicable in the European Union and other European countries with separate collection systems)

This marking shown on the product or its literature, indicates that it should not be disposed with other household wastes at the end of its working life. To prevent possible harm to the environment or human health from uncontrolled waste disposal, please separate this from other types of wastes and recycle it responsibly to promote the sustainable reuse of material resources.

Household users should contact either the retailer where they purchased this product or their local government office, for details of where and how they can take this item for environmentally safe recycling.

Business users should contact their supplier and check the terms and conditions of the purchase contract. This product should not be mixed with other commercial wastes for disposal.

**IMPORTANT NOTE:** To comply with RF exposure requirements, this device may not be co-located with any other transmitter or antenna