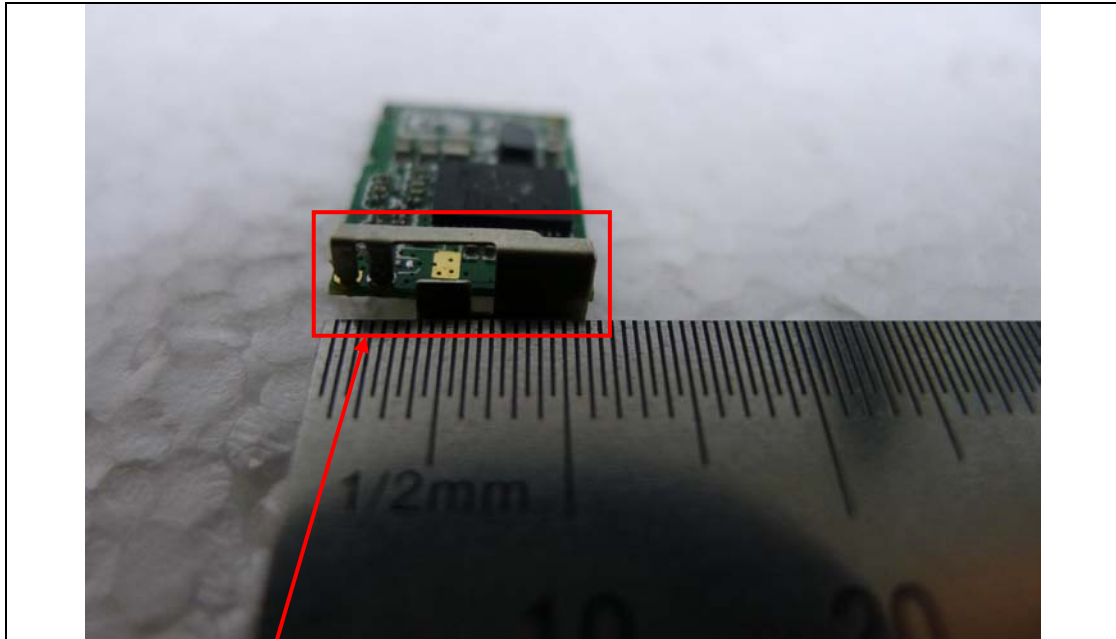


Internal photos of EUT

Main module board



PCB Antenna

Top view of Main PCB



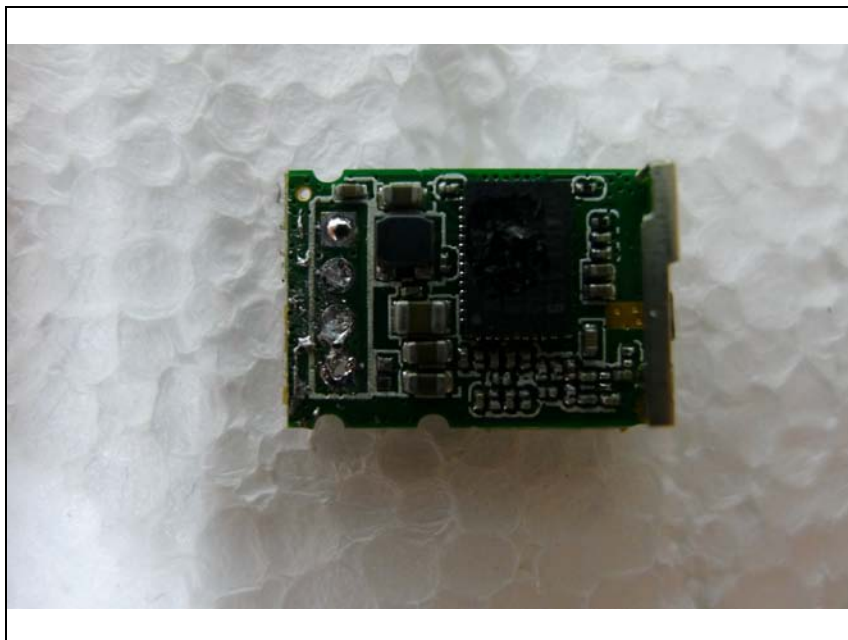
Bottom view of Main PCB



Top view of module board



Bottom view of module board



MDAS-10
Top view of Camera module

Top view of Camera module



Bottom view of Camera module



Top view of Camera board



Bottom view of Camera board

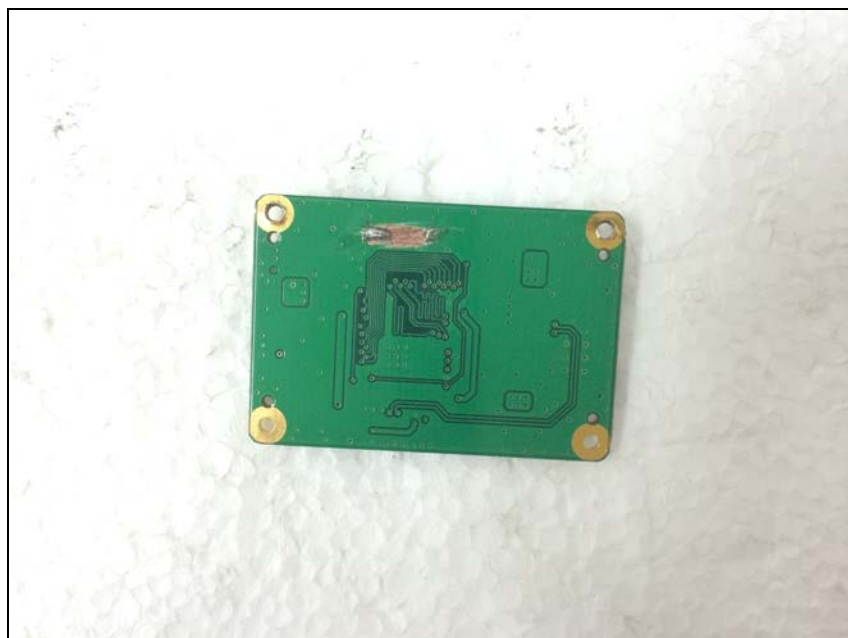


MDAS-20

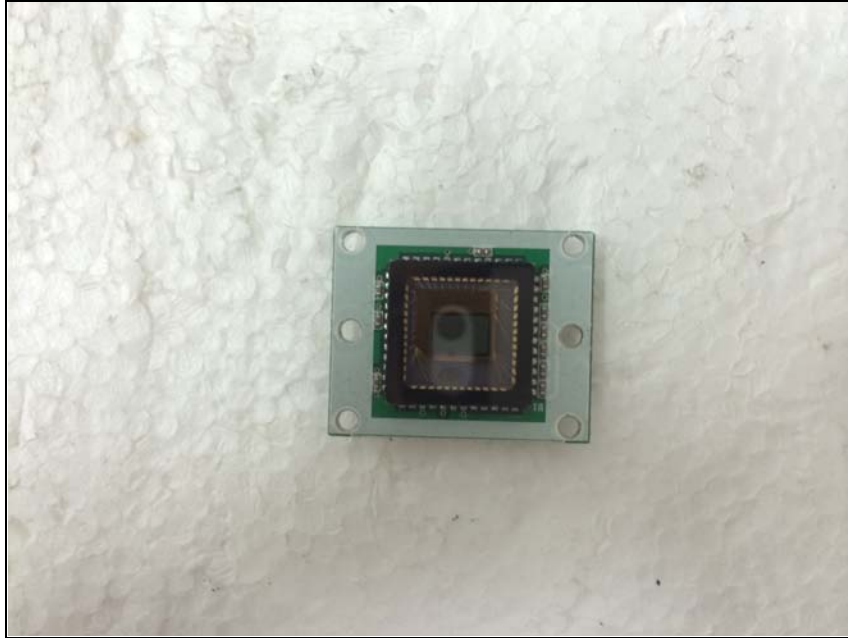
Top view of Camera module



Bottom view of Camera module



Top view of Camera board



Bottom view of Camera board

