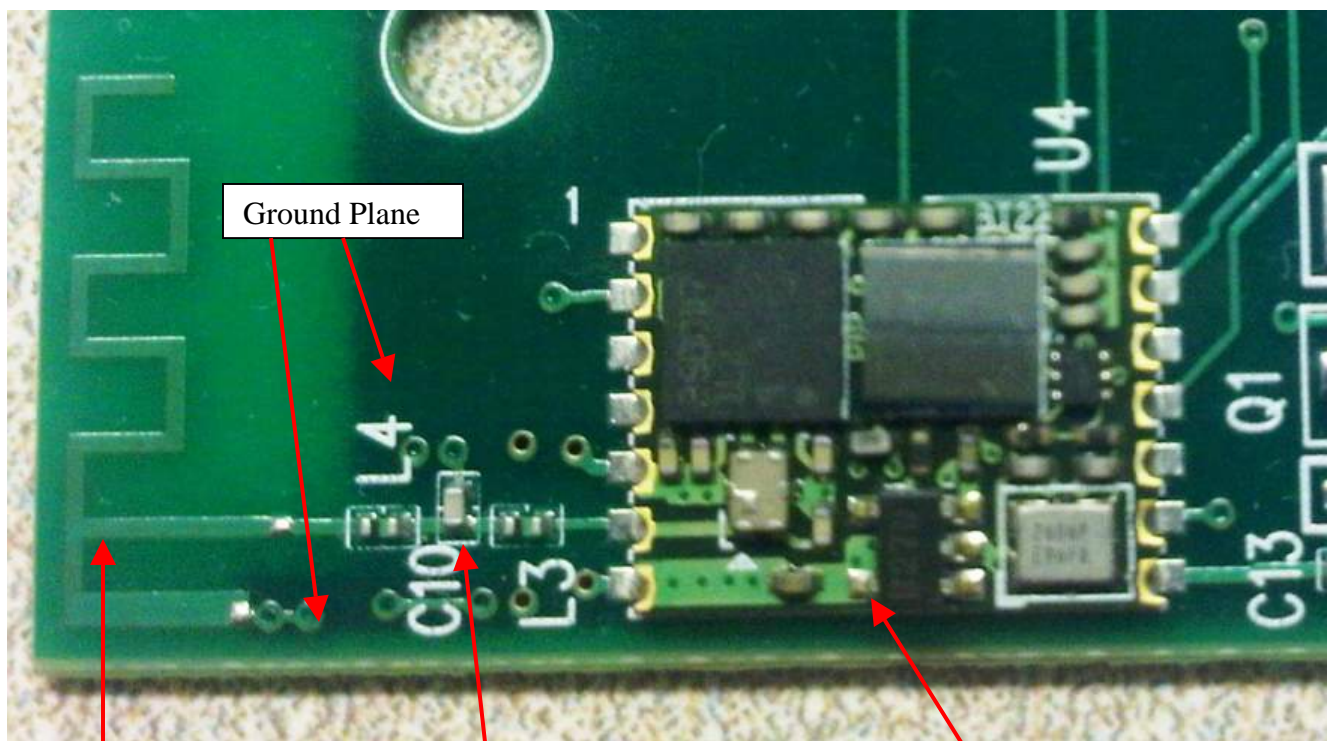


Antenna Information

The antenna is a tapped meander line style with a center frequency impedance of ~ 50 Ohms and broadband characteristics to facilitate frequency coverage of the entire bluetooth band of frequencies. This is coupled to the transmitter through a single stage, low pass LC filter to attenuate unwanted harmonics from the RF output. Maximum gain of 4.5dBi.



Meander Line
Antenna

Low Pass filter
network

Bluetooth Radio
Module

