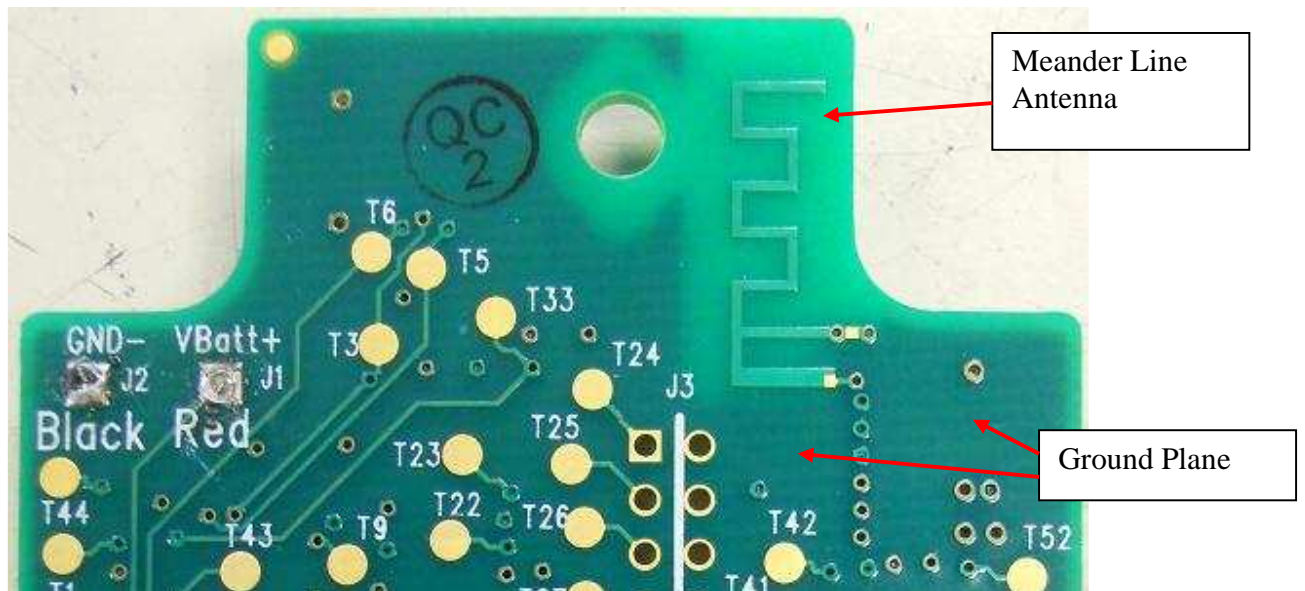
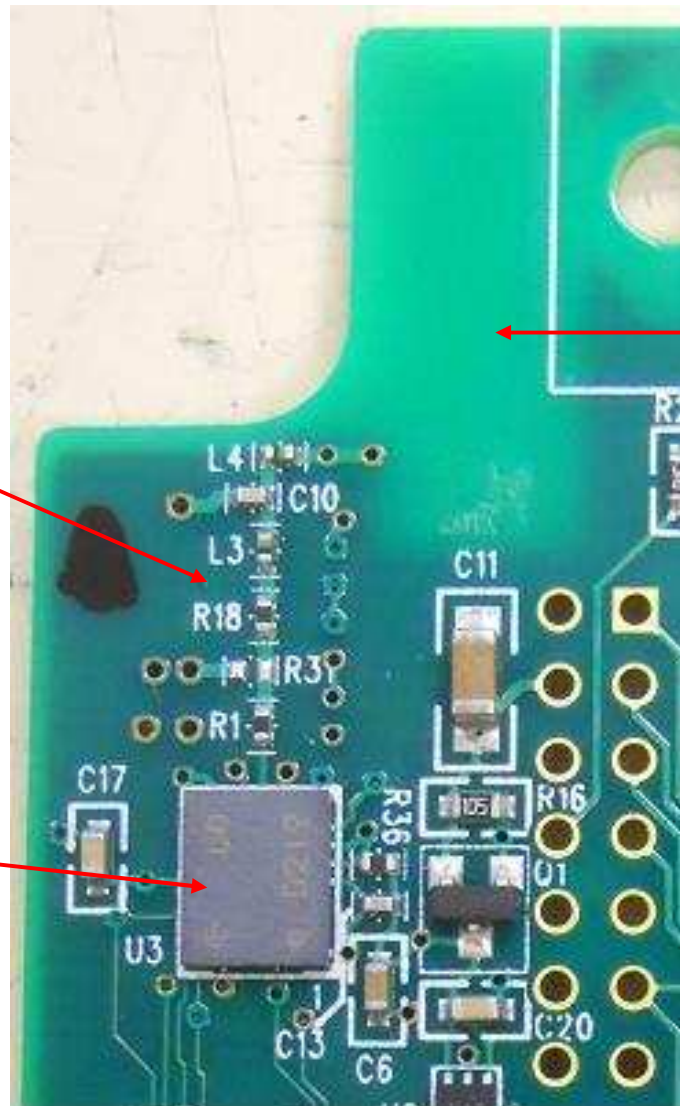


Antenna Information

The antenna is a tapped meander line style with a center frequency impedance of ~ 50 Ohms and broadband characteristics to facilitate frequency coverage of the entire Bluetooth band of frequencies. This is coupled to the transmitter through a single stage, low pass LC filter to attenuate unwanted harmonics from the RF output. Maximum gain of 4.5dBi.





Low Pass filter
network

Bluetooth Radio
Module

Meander Line
Antenna on
opposite side of
PCB