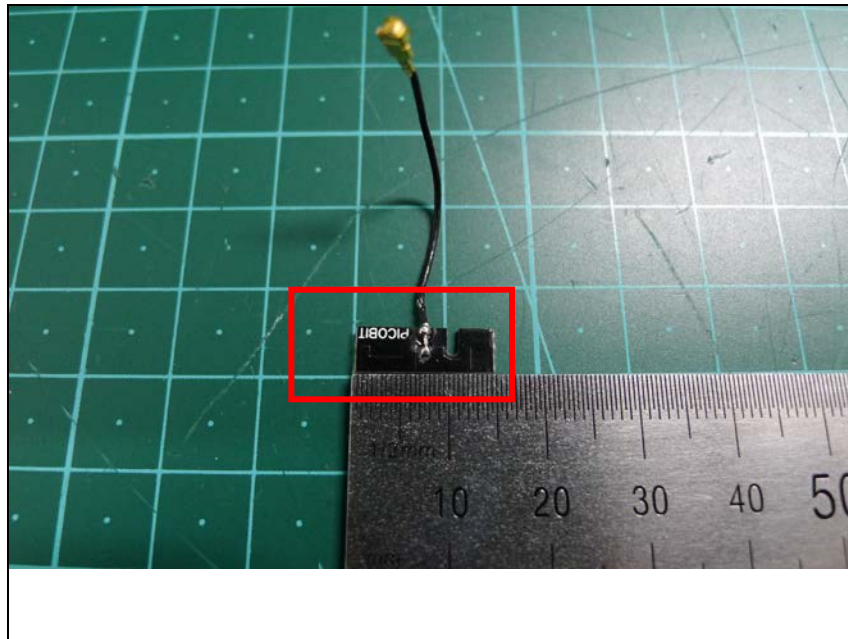


Internal photos of EUT

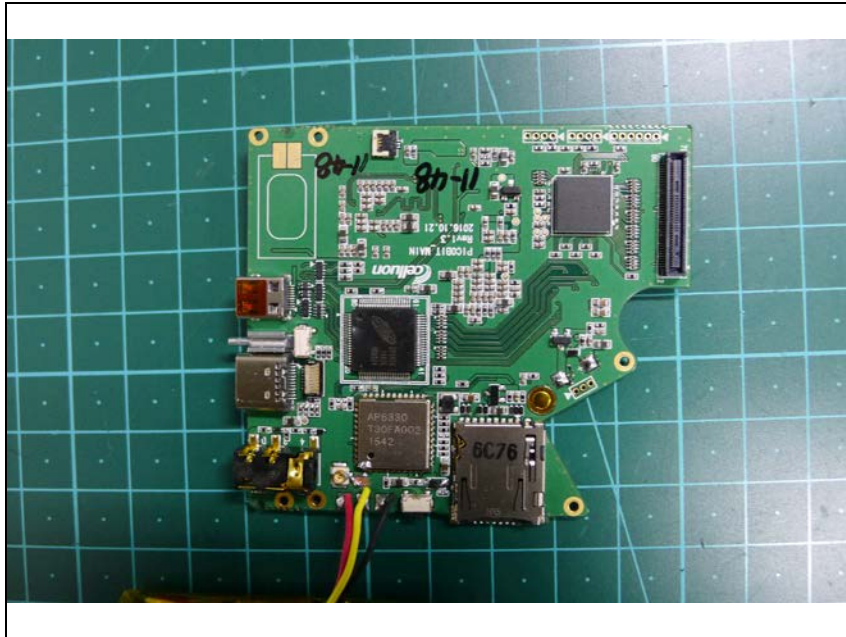
Antenna view of EUT



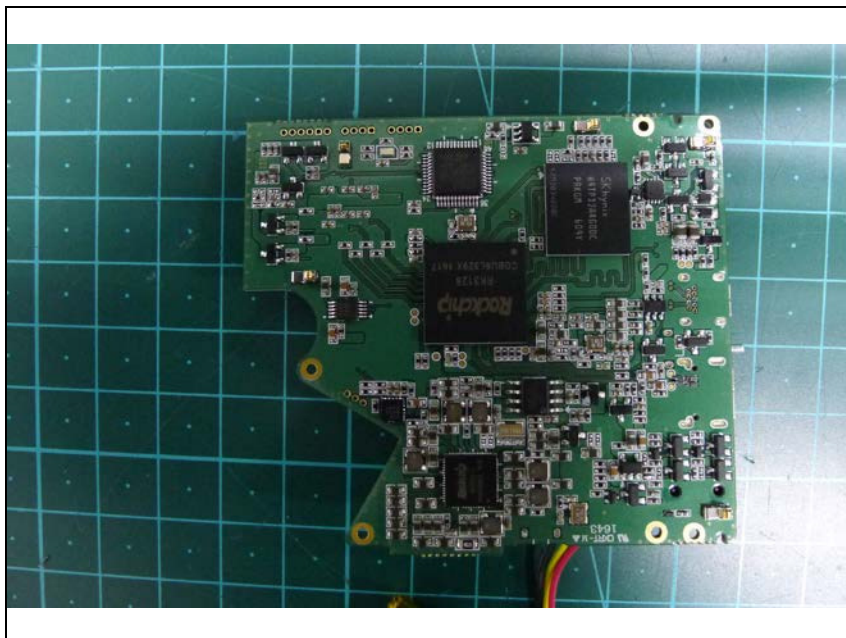
Internal view of EUT



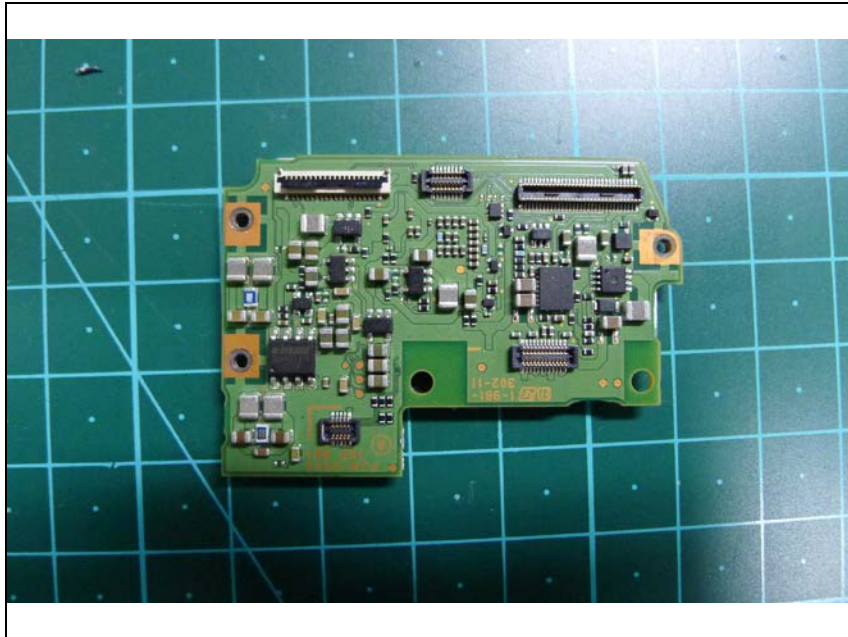
Top view of Main PCB



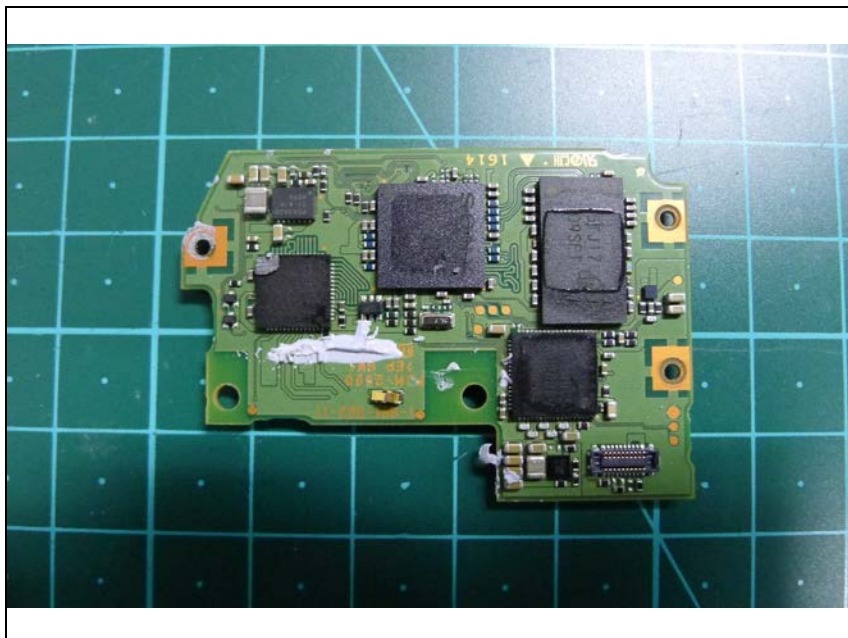
Bottom view of Main PCB



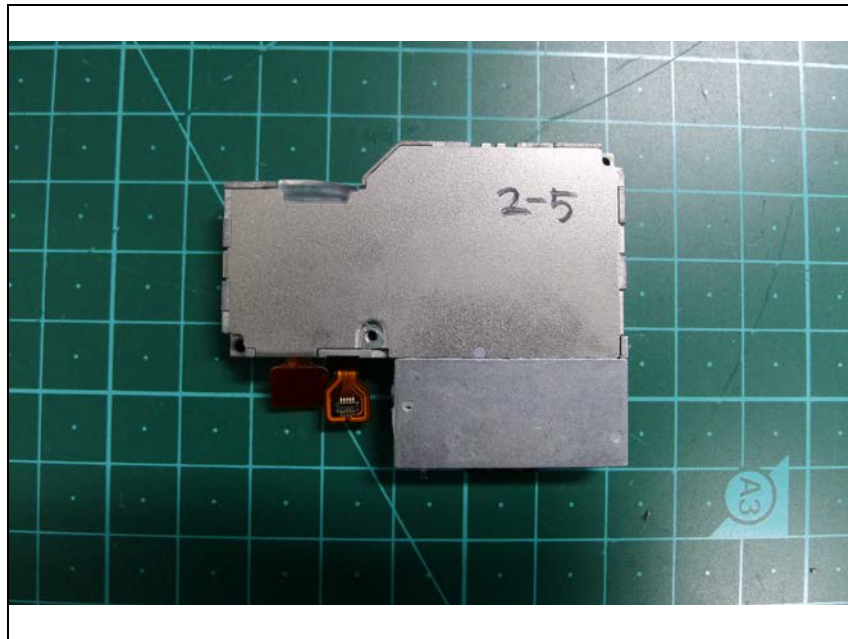
Top view of beam scanning PCB



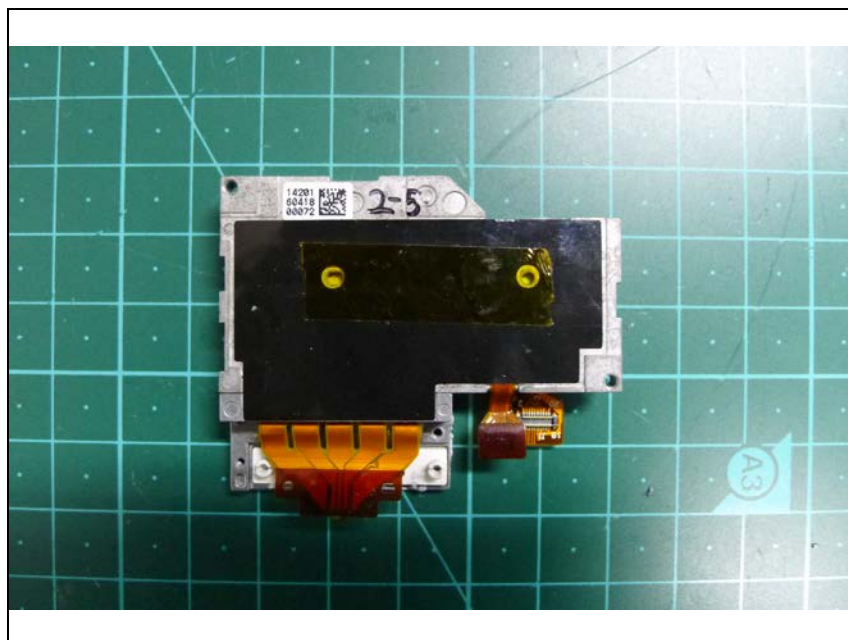
Bottom view of beam scanning PCB



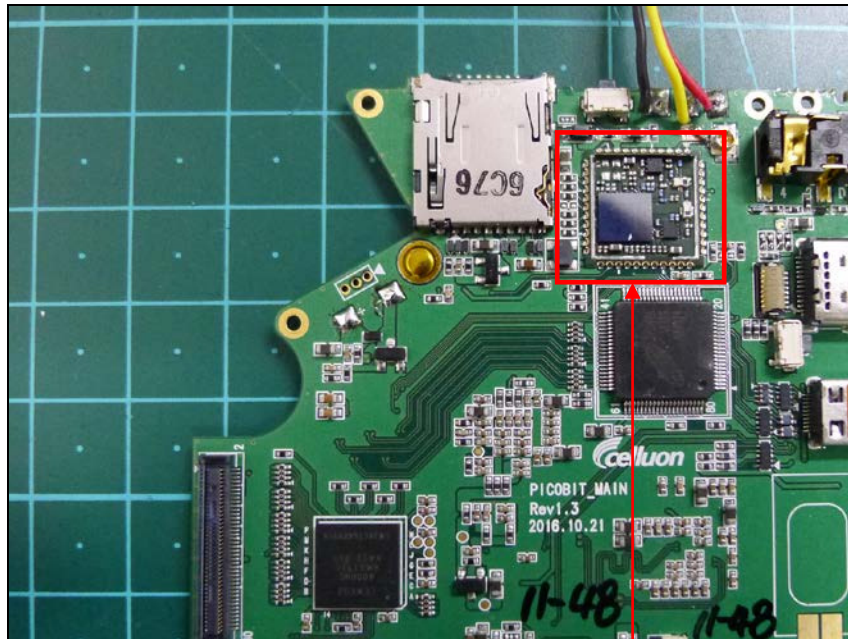
Top view of beam scanning Modul



Bottom view of beam scanning Modul



Top view of Bluetooth Module



Remove shield can(Bluetooth Module)

