

Supplementary SAR Test Report

of

Product Name

802.11a+b+g Wireless CARDBUS ADAPTER

Model

PH52ABG

Applied by:

PacketHop Inc.
1301 Shoreway Road, Suite 200,
Belmont, CA 94002
U.S.A.

Test Performed by:

International Standards Laboratory
No. 120, Lane 180, San Ho Tsuen, Hsin Ho Rd.
Lung-Tan Hsiang, Tao Yuan County 325
Taiwan, R.O.C.
Tel:(03)407-1718 Fax:(03)407-1738

Report Number: 05LR025SAR-F-2

Issue Date: 2005/11/08

HC LAB:NVLAP:200234-0;VCCI: R-341,C-354;NEMKO:ELA 113a,113c;BSMI:SL2-IN-E-0037;SL2-R1-E-0037;CNLA:1178

LT LAB:NVLAP:200234-0;VCCI: R-1435,C-1440;NEMKO:ELA 113b,113d;BSMI:SL2-IN-E-0013;CNLA:0997

ISL-T10-R31-1

Contents of Report

1.	General	1
1.1	Certification of Accuracy of Test Data	1
	PacketHop Inc.	1
2.	Description of Equipment Under Test (EUT)	2
2.1	Test Environment	3
3.	SAR Measurement System.....	4
3.1	ALSAS-10U System Description.....	4
3.1.1	Applications.....	4
3.1.2	Area Scans.....	4
3.1.3	Zoom Scan (Cube Scan Averaging).....	5
3.1.4	ALSAS-10U Interpolation and Extrapolation Uncertainty.....	5
3.2	Isotropic E-Field Probe.....	5
3.2.1	Isotropic E-Field Probe Specification.....	7
3.3	Boundary Detection Unit and Probe Mounting Device	7
3.4	Daq-Paq (Analog to Digital Electronics)	8
3.5	Axis Articulated Robot.....	8
3.6	ALSAS Universal Workstation	9
3.7	Universal Device Positioner	9
3.8	Phantom Types	9
3.8.1	APREL Laboratories Universal Phantom.....	10
4.	Tissue Simulating Liquid	11
4.1	The composition of the tissue simulating liquid.....	11
4.2	Tissue Calibration Result	11
4.3	Tissue Dielectric Parameters for Head and Body Phantoms.....	13
5.	SAR Measurement Procedure	14
5.1	SAR System Validation.....	14
5.1.1	Validation Dipoles.....	14
5.1.2	Validation Result	15
5.2	SAR Measurement Procedure	16
6.	SAR Exposure Limits.....	17
7.	Test Equipment List	18
8.	Measurement Uncertainty	19
9.	Test Result Summary (Include original SAR report).....	20
9.1	802.11b Test Result	20
9.2	802.11g Test Result	21
9.3	802.11a (5150MHz ~5350MHz, Normal Mode) Test Result	22
9.4	802.11a (5150MHz ~5350MHz, Turbo Mode) Test Result.....	23
9.5	802.11a (5725MHz ~5825MHz, Normal Mode) Test Result	24
9.6	802.11a (5725MHz ~5825MHz, Turbo Mode) Test Result.....	25
10.	SAR System Validation Data	26
10.1	5200 MHz System Validation Data	26
10.2	5800 MHz System Validation Data	29
11.	5200 MHz SAR measurement Data	32
11.1	802.11a (5150MHz ~5350MHz, Normal Mode)	33
11.1.1	5240 MHz, Normal Mode, EUT Position: Bottom, Antenna: Left.....	33
11.1.2	5260 MHz, Normal Mode, EUT Position: Front , Antenna: Right.....	34

11.1.3	5260 MHz, Normal Mode, EUT Position: TOP , Antenna: Right.....	35
11.2	802.11a (5150MHz ~5350MHz, Turbo Mode).....	36
11.2.1	5210 MHz, Turbo Mode, EUT Position: Bottom, Antenna : Left.....	36
11.2.2	5250 MHz, Turbo Mode, EUT Position: Front, Antenna: Right.....	37
11.2.3	5250 MHz, Turbo mode, EUT Position: Top, Antenna: Left.....	38
11.3	5200MHz Z-Axis plot	39
11.3.1	Frequency: 802.11a 5240MHz Normal Mode, EUT Bottom (Left Antenna)	39
11.3.2	Frequency: 802.11a 5210MHz Turbo Mode, EUT Bottom (Left Antenna).....	40
12.	5800 MHz SAR measurement Data	41
12.1	802.11a (5725MHz ~5825MHz, Normal Mode)	42
12.1.1	5765 MHz, Normal Mode, EUT Position: Front, Antenna: Right.....	42
12.1.2	5765 MHz, Normal Mode, EUT Position: Bottom, Antenna: Left.....	43
12.1.3	5765 MHz, Normal Mode, EUT Position: Front, Antenna: Left.....	44
12.1.4	5765 MHz, EUT Position: Top, Antenna: Left	45
12.2	802.11a (5725MHz ~5825MHz, Turbo Mode).....	46
12.2.1	5760 MHz, Turbo mode, EUT Position: Bottom, Antenna: Right	46
12.2.2	5760 MHz, Turbo mode, EUT Position: Front, Antenna: Right	47
12.2.3	5760 MHz, Turbo Mode, EUT Position: Bottom, Antenna: Left.....	48
12.2.4	5760 MHz, Turbo mode, EUT Position: Front , Antenna: Left.....	49
12.3	5800MHz Z-Axis plot	50
12.3.1	Frequency: 802.11a 5765 MHz Normal Mode, EUT Bottom (Left Antenna)	50
12.3.2	Frequency: 802.11a 5760MHz Turbo Mode, EUT Bottom (Right Antenna).....	51
13.	Test Setup Photographs	52
13.1	Test Position : EUT Bottom (Right Antenna and Left Antenna).....	52
13.2	Test Position : EUT Top (Right Antenna and Left Antenna)	52
14.	EUT Photograph.....	54
15.	Appendix:Probe and Validation Dipole calibration.....	58
15.1	Probe: Refer to Probe_Cal.Pdf attached.....	58
15.2	Dipole: Refer to Dipole_Cal.pdf attached.....	58

1. General

1.1 Certification of Accuracy of Test Data

Standards: FCC OET65 Supplement C June 2001

Equipment Tested: 802.11a+b+g WIRELESS CARDBUS ADAPTER

Model: PH52ABG

Applied by: **PacketHop Inc.**

Sample received Date: 2005/11/01

Final test Date : 2005/11/03 ~ 2005/11/03

Test Site: SAR test site

Maximum SAR Measurement (1g) (Original SAR report Included)

802.11b: 0.769 W/kg

802.11g: 0.489W/kg

Test Result 802.11a: 0.752 W/kg

Temperature 22.7

Humidity: 57%

Test Engineer: *David CS Chiu*

David CS Chiu

All the tests in this report have been performed and recorded in accordance with the standards described above and performed by an independent test lab, International Standards Laboratory.

The test results contained in this report accurately represent the measurements of the characteristics and the energy generated by sample equipment under test at the time of the test.

The sample equipment tested as described in this report is in compliance with the limits of above standards.

Approve & Signature

Eddy Hsiung

Eddy Hsiung/Director

Test results given in this report apply only to the specific sample(s) tested under stated test conditions. This report shall not be reproduced other than in full without the explicit written consent of ISL. This report totally contains 111 pages, including 1 cover page, 2 contents page, and 58 pages for the test description. This report must not be used to claim product endorsement by NVLAP, NIST, any agency of the federal government.

2. Description of Equipment Under Test (EUT)

Product Name	802.11a+b+g WIRELESS CARDBUS ADAPTER
Model No.	PH52ABG
FCC ID:	TCB-PH52ABG
TX Frequency	2412 MHz ~ 2462 MHz 5150 MHz ~ 5350 MHz 5725 MHz ~ 5825MHz
Number of Channel	802.11b: 11 802.11g: 11 802.11a: 12 (Normal Mode) 802.11a: 5 (Turbo Mode)
Type of Modulation	802.11b: DSSS 802.11g and 802.11a: OFDM
Max. Output Power (Conducted)	802.11b: 17.71 dBm 802.11g: 16.69 dBm 802.11a: 15.73dBm (Normal Mode) 802.11a: 15.39dBm (Turbo Mode)
Antenna Peak Gain	Right Antenna: 2.4GHz : 1.5dBi, 5GHz: 1.06dBi Left Antenna: 2.45GHz: -2.9dBi, 5GHz: 0.65dBi,
Antenna Type	Internal, Dual Band Printed IFA
Transfer Rate	802.11b: 1~11Mbps 802.11g: 6~54Mbps 802.11a: 6~54Mbps (normal mode) 802.11a: 12~108Mbps (Turbo mode)
Power Type	5V DC from Notebook PC
Device Category	Portable
RF Exposure Environment	Uncontrolled

2.1 Test Environment

Ambient conditions in the laboratory:

Items	Required	Actual
Temperature (°C)	18 ~ 25	22.7 (11/03/2005)
Humidity (%RH)	30 ~ 70	57 (11/03/2005)

3. SAR Measurement System

3.1 ALSAS-10U System Description

ALSAS-10-U is fully compliant with the technical and scientific requirements of IEEE 1528, IEC 62209, CENELEC, ARIB, ACA, and the Federal Communications Commission. The system comprises of a six axes articulated robot which utilizes a dedicated controller.

ALSAS-10U uses the latest methodologies and FDTD modeling to provide a platform which is repeatable with minimum uncertainty.

3.1.1 Applications

Predefined measurement procedures compliant with the guidelines of CENELEC, IEEE, IEC, FCC, etc are utilized during the assessment for the device. Automatic detection for all SAR maxima are embedded within the core architecture for the system, ensuring that peak locations used for centering the zoom scan are within a 1mm resolution and a 0.05mm repeatable position. System operation range currently available up-to 6 GHz in simulated tissue.

3.1.2 Area Scans

Area scans are defined prior to the measurement process being executed with a user defined variable spacing between each measurement point (integral) allowing low uncertainty measurements to be conducted. Scans defined for FCC applications utilize a 10mm² step integral, with 1mm interpolation used to locate the peak SAR area used for zoom scan assessments.

Where the system identifies multiple SAR peaks (which are within 25% of peak value) the system will provide the user with the option of assessing each peak location individually for zoom scan averaging.



3.1.3 Zoom Scan (Cube Scan Averaging)

The averaging zoom scan volume utilized in the ALSAS-10U software is in the shape of a cube and the side dimension of a 1 g or 10 g mass is dependent on the density of the liquid representing the simulated tissue. A density of 1000 kg/m³ is used to represent the head and body tissue density and not the phantom liquid density, in order to be consistent with the definition of the liquid dielectric properties, i.e. the side length of the 1 g cube is 10mm, with the side length of the 10 g cube 21,5mm.

When the cube intersects with the surface of the phantom, it is oriented so that 3 vertices touch the surface of the shell or the center of a face is tangent to the surface. The face of the cube closest to the surface is modified in order to conform to the tangent surface.

The zoom scan integer steps can be user defined so as to reduce uncertainty, but normal practice for typical test applications (including FCC) utilize a physical step of 5x5x8 (8mmx8mmx5mm) providing a volume of 32mm in the X & Y axis, and 35mm in the Z axis.

3.1.4 ALSAS-10U Interpolation and Extrapolation Uncertainty

The overall uncertainty for the methodology and algorithms the used during the SAR calculation was evaluated using the data from IEEE 1528 based on the example f3 algorithm:

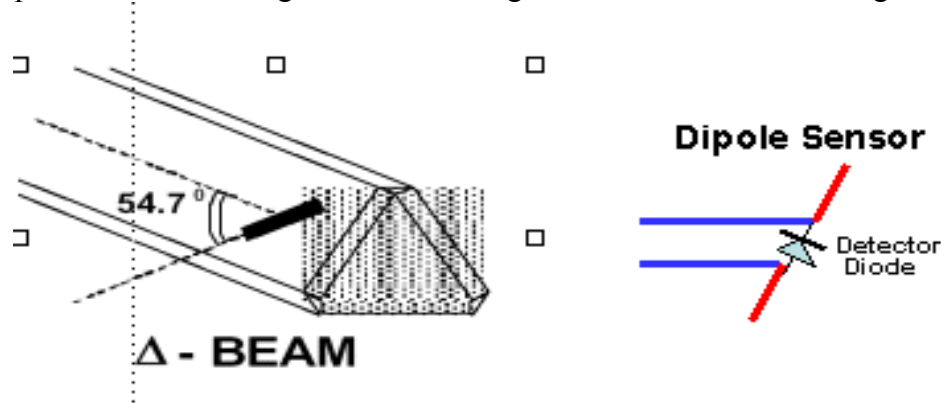
$$f_3(x, y, z) = A \frac{a^2}{\frac{a^2}{4} + x'^2 + y'^2} \cdot \left(e^{-\frac{2z}{a}} + \frac{a^2}{2(a + 2z)^2} \right)$$

3.2 Isotropic E-Field Probe

The isotropic E-Field probe has been fully calibrated and assessed for isotropicity, and boundary effect within a controlled environment. Depending on the frequency for which the probe is calibrated the method utilized for calibration will change. A number of methods is used for calibrating probes, and these are outlined in the table below:

Calibration Frequency	Air Calibration	Tissue Calibration
2450MHz	Waveguide	Temperature
5200MHz	Waveguide	Temperature
5800MHz	Waveguide	Temperature

The E-Field probe utilizes a triangular sensor arrangement as detailed in the diagram below:



SAR is assessed with a calibrated probe which moves at a default height of 5mm from the center of the diode, which is mounted to the sensor, to the phantom surface (in the Z Axis). The 5mm offset height has been selected so as to minimize any resultant boundary effect due to the probe being in close proximity to the phantom surface.

The following algorithm is an example of the function used by the system for linearization of the output from the probe when measuring complex modulation schemes.

$$V_i = U_i + U_i^2 \cdot \frac{cf}{dcp_i}$$

3.2.1 Isotropic E-Field Probe Specification

Calibration in Air	Frequency Dependent Below 2GHz Calibration in air performed in a TEM Cell Above 2GHz Calibration in air performed in waveguide
Sensitivity	0.70 $\mu\text{V}/(\text{V}/\text{m})^2$ to 0.85 $\mu\text{V}/(\text{V}/\text{m})^2$
Dynamic Range	0.0005 W/kg to 100W/kg
Isotropic Response	Better than 0.2dB
Diode Compression point (DCP)	Calibration for Specific Frequency
Probe Tip Radius	< 5mm
Sensor Offset	1.56 (+/- 0.02mm)
Probe Length	290mm
Video Bandwidth	@ 500 Hz: 1dB @1.02 KHz: 3dB
Boundary Effect	Less than 2% for distance greater than 2.4mm
Spatial Resolution	Diameter less than 5mm Compliant with Standards

3.3 Boundary Detection Unit and Probe Mounting Device

ALSAS-10U incorporates a boundary detection unit with a sensitivity of 0.05mm for detecting all types of surfaces. The robust design allows for detection during probe tilt (probe normalize) exercises, and utilizes a second stage emergency stop. The signal electronics are fed directly into the robot controller for high accuracy surface detection in lateral and axial detection modes (X, Y, & Z).

The probe is mounted directly onto the Boundary Detection unit for accurate tooling and displacement calculations controlled by the robot kinematics. The probe is connect to an isolated probe interconnect where the output stage of the probe is fed directly into the amplifier stage of the Daq-Paq

3.4 Daq-Paq (Analog to Digital Electronics)

ALSAS-10U incorporates a fully calibrated Daq-Paq (analog to digital conversion system) which has a 4 channel input stage, sent via a 2 stage auto-set amplifier module. The input signal is amplified accordingly so as to offer a dynamic range from 5 μ V to 800mV. Integration of the fields measured is carried out at board level utilizing a Co-Processor which then sends the measured fields down into the main computational module in digitized form via an RS232 communications port. Probe linearity and duty cycle compensation is carried out within the main Daq-Paq module.

ADC	12 Bit
Amplifier Range	20mV to 200mV and 150mV to 800mV
Field Integration	Local Co-Processor utilizing proprietary integration algorithms
Number of Input Channels	4 in total 3 dedicated and 1 spare
Communication	Packet data via RS232

3.5 Axis Articulated Robot



ALSAS-10U utilizes a six axis articulated robot, which is controlled using a Pentium based real-time movement controller. The movement kinematics engine utilizes proprietary (Thermo CRS) interpolation and extrapolation algorithms, which allow full freedom of movement for each of the six joints within the working envelope. Utilization of joint 6 allows for full probe rotation with a tolerance better than 0.05mm around the central axis.

Robot/Controller Manufacturer	Thermo CRS
Number of Axis	Six independently controlled axis
Positioning Repeatability	0.05mm
Controller Type	Single phase Pentium based C500C
Robot Reach	710mm
Communication	RS232 and LAN compatible

3.6 ALSAS Universal Workstation

ALSAS Universal workstation allows for repeatability and fast adaptability. It allows users to do calibration, testing and measurements using different types of phantoms with one set up, which significantly speeds up the measurement process.

3.7 Universal Device Positioner

The universal device positioner allow complete freedom of movement of the EUT. Developed to hold a EUT in a free-space scenario any additional loading attributable to the material used in the construction of the positioner has been eliminated. Repeatability has been enhanced through the linear scales which form the design used to indicate positioning for any given test scenario in all major axes. A 15° tilt indicator is included for the of aid check to tilt movements for head SAR analysis. Overall uncertainty for measurements have been reduced due to the design of the Universal device positioner, which allows positioning of a device in as near to a free-space scenario as possible, and by providing the means for complete repeatability.

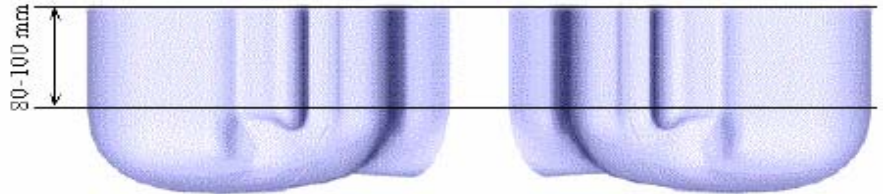
3.8 Phantom Types

The ALSAS-10U allows the integration of multiple phantom types. SAM Phantoms fully compliant with IEEE 1528, Universal Phantom, and Universal Flat.



APREL SAM Phantoms

The SAM phantoms developed using the IEEE SAM CAD file. They are fully compliant with the requirements for both IEEE 1528 and FCC Supplement C. Both the left and right SAM phantoms are interchangeable, transparent and include the IEEE 1528 grid with visible NF and MB lines.



3.8.1 APREL Laboratories Universal Phantom

The Universal Phantom is used on the ALSAS-10U as a system validation phantom. The Universal Phantom has been fully validated both experimentally from 800MHz to 6GHz and numerically using XFDTD numerical software. The shell thickness is 2mm overall, with a 4mm spacer located at the NF/MB intersection providing an overall thickness of 6mm in line with the requirements of IEEE-1528. The design allows for fast and accurate measurements, of handsets, by allowing the conservative SAR to be evaluated at on frequency for both left and right head experiments in one measurement.



4. Tissue Simulating Liquid

4.1 The composition of the tissue simulating liquid

The SAR liquid is from Aprel Laboratories.

5800MHz Head Tissue: Part No.: ALS-TS-5800-1-H

5800MHz Body Tissue: Part No.: ALS-TS-5800-1-B

5200MHz Head Tissue: Part No.: ALS-TS-5200-1-H

5200MHz Body Tissue: Part No.: ALS-TS-5200-1-B

INGREDIENT (% Weight)	5200MHz Head	5200MHz Body	5800MHz Head	5800MHz Body
Water	X	X	X	X
Sugar	X	X	X	X
HEC	X	X	X	X
Preventol	X	X	X	X

4.2 Tissue Calibration Result

The dielectric parameters of the liquids were verified prior to the SAR evaluation using Agilent Dielectric Probe Kit and Agilent E5071B Vector Network Analyzer

5GHz Tissue Simulant Measurement

Head Tissue Simulant Measurement (Nov. 3, 2005) for 5200MHz SAR						
Frequency [MHz]	Description/ Calibration date	Standard Value		Measurement Value		Tissue Temp. [°C]
		ϵ_r	σ [s/m]	ϵ_r	σ [s/m]	
5200MHz	11/03/2005	36	4.7	37.63	4.862	22.1

Head Tissue Simulant Measurement (Nov. 3, 2005) for 5800MHz SAR						
Frequency [MHz]	Description/ Calibration date	Standard Value		Measurement Value		Tissue Temp. [°C]
		ϵ_r	σ [s/m]	ϵ_r	σ [s/m]	
5800MHz	11/03/2005	35.3	5.27	36.45	5.503	22.1

Body Tissue Simulant Measurement (Nov. 03, 2005) for 5200MHz SAR						
Frequency [MHz]	Description	Standard Value		Measurement Value		Tissue Temp. [°C]
		ϵ_r	σ [s/m]	ϵ_r	σ [s/m]	
5150MHz	11/03/2005	-	-	51.91	5.254	22.1
5200MHz	11/03/2005	-	-	51.63	5.337	22.1
5250MHz	11/03/2005	-	-	51.48	5.426	22.1
5300MHz	11/03/2005	-	-	51.40	5.493	22.1
5350MHz	11/03/2005	-	-	51.23	5.548	22.1
5800MHz	11/03/2005	48.2	6.00	50.42	6.206	22.1
5850MHz	11/03/2005	-	-	50.30	6.336	22.1

Body Tissue Simulant Measurement (Nov. 3, 2005) for 5800MHz SAR						
Frequency [MHz]	Description	Standard Value		Measurement Value		Tissue Temp. [°C]
		ϵ_r	σ [s/m]	ϵ_r	σ [s/m]	
5700MHz	09/02/2005	-	-	50.94	6.096	22.1
5750MHz	09/02/2005	-	-	50.70	6.162	22.1
5800MHz	09/02/2005	48.2	6.00	50.51	6.275	22.1
5850MHz	09/02/2005	-	-	50.43	6.384	22.1

4.3 Tissue Dielectric Parameters for Head and Body Phantoms

The head tissue dielectric parameters recommended by the IEEE SCC-34/SC-2 in P1528 have been incorporated in the following table. These head parameters are derived from planar layer models simulating the highest expected SAR for the dielectric properties and tissue thickness variations in a human head. Other head and body tissue parameters that have not been specified in P1528 are derived from the tissue dielectric parameters computed from the 4-Cole-Cole equations described in Reference [12] and extrapolated according to the head parameters specified in P1528.

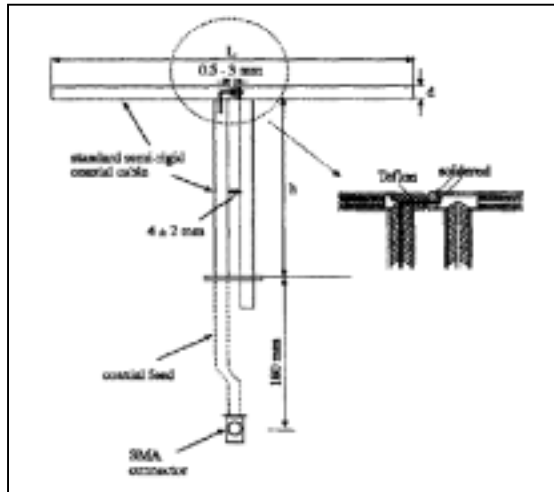
Target Frequency (MHz)	Head		Body	
	ϵ_r	σ (S/m)	ϵ_r	σ (S/m)
150	52.3	0.76	61.9	0.80
300	45.3	0.87	58.2	0.92
450	43.5	0.87	56.7	0.94
835	41.5	0.90	55.2	0.97
900	41.5	0.97	55.0	1.05
915	41.5	0.98	55.0	1.06
1450	40.5	1.20	54.0	1.30
1610	40.3	1.29	53.8	1.40
1800 – 2000	40.0	1.40	53.3	1.52
2450	39.2	1.80	52.7	1.95
3000	38.5	2.40	52.0	2.73
5800	35.3	5.27	48.2	6.00

(ϵ_r = relative permittivity, σ = conductivity and $\rho = 1000 \text{ kg/m}^3$)

5. SAR Measurement Procedure

5.1 SAR System Validation

5.1.1 Validation Dipoles



The dipoles used is based on the IEEE-1528 standard, and is complied with mechanical and electrical specifications in line with the requirements of both IEEE and FCC Supplement C. the table below provides details for the mechanical and electrical specifications for the dipoles.

Frequency	L (mm)	h (mm)	d (mm)
2450MHz	53.5	30.4	3.6
5200MHz	23.6	14.0	3.6
5800MHz	21.6	12.6	3.6

5.1.2 Validation Result

System Performance Check at 5200MHz				
Validation Kit: ASL-D-5200-S-2				
Frequency [MHz]	Description	SAR [w/kg] 1g	SAR [w/kg] 10g	Tissue Temp. [°C]
5200 MHz	Reference result ± 10% window	62.9 56.61 to 69.19	17.9 16.11 to 19.69	N/A
	11/03/2005	59.420	19.329	22.1
Note: All SAR values are 1W forward power.				

System Performance Check at 5800MHz				
Validation Kit: ASL-D-5800-S-2				
Frequency [MHz]	Description	SAR [w/kg] 1g	SAR [w/kg] 10g	Tissue Temp. [°C]
5800 MHz	Reference result ± 10% window	58.3 52.47 to 64.13	18 16.2 to 19.8	N/A
	11/03/2005	58.244	17.780	22.1
Note: All SAR values are 1W forward power.				

5.2 SAR Measurement Procedure

The ALSAS-10U calculates SAR using the following equation,

$$SAR = \frac{\sigma |E|^2}{\rho}$$

σ : represents the simulated tissue conductivity

ρ : represents the tissue density

The EUT is set to transmit at the required power in line with product specification, at each frequency relating to the LOW, MID, and HIGH channel settings.

Pre-scans are made on the device to establish the location for the transmitting antenna, using a large area scan in either air or tissue simulation fluid.

The EUT is placed against the Universal Phantom where the maximum area scan dimensions are larger than the physical size of the resonating antenna. When the scan size is not large enough to cover the peak SAR distribution, it is modified by either extending the area scan size in both the X and Y directions, or the device is shifted within the predefined area.

The area scan is then run to establish the peak SAR location (interpolated resolution set at 1mm²) which is then used to orient the center of the zoom scan. The zoom scan is then executed and the 1g and 10g averages are derived from the zoom scan volume (interpolated resolution set at 1mm³).

6. SAR Exposure Limits

SAR assessments have been made in line with the requirements of IEEE-1528, FCC Supplement C, and comply with ANSI/IEEE C95.1-1992 “Uncontrolled Environments” limits. These limits apply to a location which is deemed as “Uncontrolled Environment” which can be described as a situation where the general public may be exposed to an RF source with no prior knowledge or control over their exposure.

Limits for General Population/Uncontrolled Exposure (W/kg)

Type Exposure	Uncontrolled Environment Limit
Spatial Peak SAR (1g cube tissue for brain or body)	1.60 W/kg
Spatial Average SAR (whole body)	0.08 W/kg
Spatial Peak SAR (10g for hands, feet, ankles and wrist)	4.00 W/kg

7. Test Equipment List

Instrument	Manufact-urer	Model No.	Serial No.	Last Calibration
Data Acquisition Package	Aprel	ALS-DAQ-PAQ-2	110-00203	24 Mar. 2005
Aprel Laboratories Probe	Aprel	ALS-E020	266	24 Mar. 2005
Aprel Reference Dipole 2450MHz	Aprel	ALS-D-2450-S-2	220-00753	4 Mar. 2005
Aprel Reference Dipole 5200MHz	Aprel	ALS-D-5200-S-2	230-00802	4 Mar. 2005
Aprel Reference Dipole 5800MHz	Aprel	ALS-D-5800-S-2	240-00852	4 Mar. 2005
Boundary Detection Sensor System	Aprel	ALS-PMDPS-2	120-00253	N/A
Universal Work Station	Aprel	ALS-UWS	100-00153	N/A
Device Holder 2.0	Aprel	ALS-H-E-SET-2	170-00503	N/A
Left Ear SAM Phantom	Aprel	ALS-P-SAM-L	130-00305	N/A
Right Ear SAM Phantom	Aprel	ALS-P-SAM-R	140-00355	N/A
Universal Phantom	Aprel	ALS-P-UP-1	150-00405	N/A
Aprel Dipole Spacer	Aprel	ALS-DS-U	250-00903	N/A
SAR Software	Aprel	ALSAS-10U Ver.2.2.0	B0D5F-112FE	N/A
CRS C500C Controller	Thermo	ALS-C500	RCF0440278	N/A
CRF F3 Robot	Thermo	ALS-F3	RAF0440252	N/A
Power Amplifier	Mini-Circuit	ZVE-8G	D030305	N/A
Vector Network Analyzer	Agilent	E5071B	MY42402726	5 Aug. 2005
Dielectric Probe Kit	Aglient	85070E	MY44300124	N/A
Signal Generator	Anritsu	MG3692A	020311	15 Feb. 2005
Power Meter	Agilent	438A	3513U06187	14 Feb. 2005
Power Sensor	Agilent	84815A	3318A01828	15 Feb. 2005

Note: All equipment upon which need to be calibrated are with calibration period of 1 year.

8. Measurement Uncertainty

Exposure Assessment Measurement Uncertainty

Source of Uncertainty	Tolerance Value	Probability Distribution	Divisor	c_i^1 (1-g)	c_i^1 (10-g)	Standard Uncertainty (1-g) %	Standard Uncertainty (10-g) %
Measurement System							
Probe Calibration	3.5	normal	1	1	1	3.5	3.5
Axial Isotropy	3.7	rectangular	$\sqrt{3}$	$(1-cp)^{1/2}$	$(1-cp)^{1/2}$	1.5	1.5
Hemispherical Isotropy	10.9	rectangular	$\sqrt{3}$	\sqrt{cp}	\sqrt{cp}	4.4	4.4
Boundary Effect	1.0	rectangular	$\sqrt{3}$	1	1	0.6	0.6
Linearity	4.7	rectangular	$\sqrt{3}$	1	1	2.7	2.7
Detection Limit	1.0	rectangular	$\sqrt{3}$	1	1	0.6	0.6
Readout Electronics	1.0	normal	1	1	1	1.0	1.0
Response Time	0.8	rectangular	$\sqrt{3}$	1	1	0.5	0.5
Integration Time	1.7	rectangular	$\sqrt{3}$	1	1	1.0	1.0
RF Ambient Condition	3.0	rectangular	$\sqrt{3}$	1	1	1.7	1.7
Probe Positioner Mech.	0.4	rectangular	$\sqrt{3}$	1	1	0.2	0.2
Restriction							
Probe Positioning with respect to Phantom Shell	2.9	rectangular	$\sqrt{3}$	1	1	1.7	1.7
Extrapolation and Integration	3.7	rectangular	$\sqrt{3}$	1	1	2.1	2.1
Test Sample Positioning	4.0	normal	1	1	1	4.0	4.0
Device Holder Uncertainty	2.0	normal	1	1	1	2.0	2.0
Drift of Output Power	4.7	rectangular	$\sqrt{3}$	1	1	2.7	2.7
Phantom and Setup							
Phantom Uncertainty(shape & thickness tolerance)	3.4	rectangular	$\sqrt{3}$	1	1	2.0	2.0
Liquid Conductivity(target)	5.0	rectangular	$\sqrt{3}$	0.7	0.5	2.0	1.4
Liquid Conductivity(meas.)	4.6	normal	1	0.7	0.5	3.1	2.2
Liquid Permittivity(target)	5.0	rectangular	$\sqrt{3}$	0.6	0.5	1.7	1.4
Liquid Permittivity(meas.)	4.5	normal	1	0.6	0.5	2.7	2.2
Combined Uncertainty		RSS				10.8	10.3
Combined Uncertainty (coverage factor=2)		Normal(k=2)				21.5	20.6

9. Test Result Summary (Include original SAR report)

9.1 802.11b Test Result

SAR Measurement							
<i>Ambient Temperature (°C) : 22 ±1</i>					<i>Relative Humidity (%) : 53</i>		
<i>Liquid Temperature (°C) : 21.5±1</i>					<i>Depth of Liquid (cm) : >15</i>		
Product :							
Test Mode : 802.11b (Right Antenna)							
Test Position of EUT	Zoom Scan	Measurement Distance	Channel/ MHz	Conducted power (dBm)	SAR 1g (W/Kg)	Limit (W/Kg)	Test Date
Bottom	7x7x7	x=y=z=5mm	Low/2412	17.71	0.769	1.6	8-29-2005
Bottom	7x7x7	x=y=z=5mm	Mid/2437	17.21	0.643	1.6	8-29-2005
Bottom	7x7x7	x=y=z=5mm	High/2462	17.70	0.452	1.6	8-29-2005
Top	5x5x8	x=y=8mm z=4mm	Mid/2437	17.21	0.162	1.6	8-29-2005
Front End	7x7x7	x=y=z=5mm	Mid/2437	17.21	0.224	1.6	8-29-2005
Test Mode : 802.11b (Left Antenna)							
Bottom	5x5x8	x=y=8mm z=4mm	Low/2412	17.71	0.516	1.6	8-29-2005
Bottom	5x5x8	x=y=8mm z=4mm	Mid/2437	17.21	0.543	1.6	8-29-2005
Bottom	5x5x8	x=y=8mm z=4mm	High/2462	17.70	0.555	1.6	8-29-2005
Top	5x5x8	x=y=8mm z=4mm	Mid/2437	17.21	0.183	1.6	8-29-2005
Front End	5x5x8	x=y=8mm z=4mm	Mid/2437	17.21	0.188	1.6	8-29-2005

9.2 802.11g Test Result

SAR Measurement							
<i>Ambient Temperature (°C) : 22 ±1</i>					<i>Relative Humidity (%) : 53</i>		
<i>Liquid Temperature (°C) : 21.5±1</i>					<i>Depth of Liquid (cm) : >15</i>		
Product :							
Test Mode : 802.11g (Right Antenna)							
Test Position of EUT	Zoom Scan	Measurement Distance	Channel/ MHz	Conducted power (dBm)	SAR 1g (W/Kg)	Limit (W/Kg)	Test Date
Bottom	7x7x7	x=y=z=5mm	Low/2412	16.69	0.489	1.6	8-29-2005
Bottom	7x7x7	x=y=z=5mm	Mid/2437	16.55	0.357	1.6	8-29-2005
Bottom	7x7x7	x=y=z=5mm	High/2462	16.62	0.249	1.6	8-29-2005
Top	5x5x8	x=y=8mm z=4mm	Mid/2437	16.55	0.099	1.6	8-29-2005
Front End	7x7x7	x=y=z=5mm	Mid/2437	16.55	0.166	1.6	8-29-2005
Test Mode : 802.11g (Left Antenna)							
Bottom	5x5x8	x=y=8mm z=4mm	Low/2412	16.69	0.437	1.6	8-29-2005
Bottom	5x5x8	x=y=8mm z=4mm	Mid/2437	16.55	0.425	1.6	8-29-2005
Bottom	5x5x8	x=y=8mm z=4mm	High/2462	16.62	0.397	1.6	8-29-2005
Top	5x5x8	x=y=8mm z=4mm	Mid/2437	16.55	0.108	1.6	8-29-2005
Front End	5x5x8	x=y=8mm z=4mm	Mid/2437	16.55	0.123	1.6	8-29-2005

9.3 802.11a (5150MHz ~5350MHz, Normal Mode) Test Result

SAR Measurement							
<i>Ambient Temperature (°C) : 22 ±1</i>					<i>Relative Humidity (%) : 53</i>		
<i>Liquid Temperature (°C) : 21.5±1</i>					<i>Depth of Liquid (cm) : >15</i>		
Product :							
Test Mode : 802.11a (5150MHz ~5350MHz, Normal Mode) Right Antenna							
Test Position of EUT	Zoom Scan	Measurement Distance	Channel/ MHz	Conducted power (dBm)	SAR 1g (W/Kg)	Limit (W/Kg)	Test Date
Bottom	9x9x13	x=y=4mm z=2.5mm	Low/5180	15.30	0.752	1.6	8-30-2005
Bottom	9x9x13	x=y=4mm z=2.5mm	Mid/5240	15.07	0.715	1.6	8-30-2005
Bottom	9x9x13	x=y=4mm z=2.5mm	Mid/5260	15.73	0.661	1.6	8-30-2005
Bottom	9x9x13	x=y=4mm z=2.5mm	High/5320	14.76	0.670	1.6	8-30-2005
Top	5x5x8	x=y=8mm z=4mm	Mid/5260	15.73	0.228	1.6	8-30-2005
Top	9x9x13	x=y=4mm z=2.5mm	Mid/5260	15.65	0.194	1.6	11-03-2005
Front End	5x5x8	x=y=8mm z=4mm	Mid/5260	15.73	0.463	1.6	8-30-2005
Front End	9x9x13	x=y=4mm z=2.5mm	Mid/5260	15.65	0.461	1.6	11-03-2005
Test Mode : 802.11a (5150MHz ~5350MHz, Normal Mode) Left Antenna							
Bottom	5x5x8	x=y=8mm z=4mm	Low/5180	15.30	0.551	1.6	8-30-2005
Bottom	5x5x8	x=y=8mm z=4mm	Mid/5240	15.07	0.603	1.6	8-30-2005
Bottom	9x9x13	x=y=4mm z=2.5mm	Mid/5240	15.28	0.663	1.6	11-03-2005
Bottom	5x5x8	x=y=8mm z=4mm	Mid/5260	15.73	0.504	1.6	8-30-2005
Bottom	5x5x8	x=y=8mm z=4mm	High/5320	14.76	0.523	1.6	8-30-2005
Top	5x5x8	x=y=8mm z=4mm	Mid/5260	15.73	0.225	1.6	8-30-2005
Front End	5x5x8	x=y=8mm z=4mm	Mid/5260	15.73	0.241	1.6	8-30-2005

9.4 802.11a (5150MHz ~5350MHz, Turbo Mode) Test Result

SAR Measurement							
<i>Ambient Temperature (°C) : 22 ±1</i>					<i>Relative Humidity (%) : 53</i>		
<i>Liquid Temperature (°C) : 21.5±1</i>					<i>Depth of Liquid (cm) : >15</i>		
Product :							
Test Mode : 802.11a (5150MHz ~5350MHz, Turbo Mode) Right Antenna							
Test Position of EUT	Zoom Scan	Measurement Distance	Channel/ MHz	Conducted power (dBm)	SAR 1g (W/Kg)	Limit (W/Kg)	Test Date
Bottom	9x9x13	x=y=4mm z=2.5mm	Low/5210	15.39	0.735	1.6	8-30-2005
Bottom	5x5x8	x=y=8mm z=4mm	Mid/5250	14.76	0.484	1.6	8-30-2005
Bottom	5x5x8	x=y=8mm z=4mm	High/5290	13.84	0.506	1.6	8-30-2005
Top	5x5x8	x=y=8mm z=4mm	Mid/5250	14.76	0.220	1.6	8-30-2005
Front End	5x5x8	x=y=8mm z=4mm	Mid/5250	14.76	0.402	1.6	8-30-2005
Front End	9x9x13	x=y=4mm z=2.5mm	Mid/5250	14.91	0.391	1.6	11-03-2005
Test Mode : 802.11a (5150MHz ~5350MHz, Turbo Mode) Left Antenna							
Bottom	5x5x8	x=y=8mm z=4mm	Low/5210	15.39	0.534	1.6	8-30-2005
Bottom	9x9x13	x=y=4mm z=2.5mm	Low/5210	15.22	0.532	1.6	11-03-2005
Bottom	5x5x8	x=y=8mm z=4mm	Mid/5250	14.76	0.513	1.6	8-30-2005
Bottom	5x5x8	x=y=8mm z=4mm	High/5290	13.84	0.452	1.6	8-30-2005
Top	5x5x8	x=y=8mm z=4mm	Mid/5250	14.76	0.240	1.6	8-30-2005
Top	9x9x13	x=y=4mm z=2.5mm	Mid/5250	14.91	0.270	1.6	11-03-2005
Front End	5x5x8	x=y=8mm z=4mm	Mid/5250	14.76	0.264	1.6	8-30-2005

9.5 802.11a (5725MHz ~5825MHz, Normal Mode) Test Result

SAR Measurement							
<i>Ambient Temperature (°C) : 22 ±1</i>					<i>Relative Humidity (%) : 53</i>		
<i>Liquid Temperature (°C) : 21.5±1</i>					<i>Depth of Liquid (cm):>15</i>		
Product :							
Test Mode : 802.11a (5745MHz ~5805MHz, Normal Mode) Right Antenna							
Test Position of EUT	Zoom Scan	Measurement Distance	Channel/ MHz	Conducted power (dBm)	SAR 1g (W/Kg)	Limit (W/Kg)	Test Date
Bottom	9x9x13	x=y=4mm z=2.5mm	Low/5745	13.05	0.549	1.6	9-02-2005
Bottom	9x9x13	x=y=4mm z=2.5mm	Mid/5765	13.99	0.628	1.6	9-02-2005
Bottom	11x11x15	x=y=3mm z=2mm	High/5805	14.07	0.554	1.6	9-02-2005
Top	5x5x8	x=y=8mm z=4mm	Mid/5765	13.99	0.228	1.6	9-02-2005
Front End	5x5x8	x=y=8mm z=4mm	Mid/5765	13.99	0.481	1.6	9-02-2005
Front End	9x9x13	x=y=4mm z=2.5mm	Mid/5765	13.85	0.447	1.6	11-03-2005
Test Mode : 802.11a (5745MHz ~5805MHz, Normal Mode) Left Antenna							
Bottom	5x5x8	x=y=8mm z=4mm	Low/5745	13.05	0.484	1.6	9-02-2005
Bottom	5x5x8	x=y=8mm z=4mm	Mid/5765	13.99	0.545	1.6	9-02-2005
Bottom	9x9x13	x=y=4mm z=2.5mm	Mid/5765	13.85	0.515	1.6	11-03-2005
Bottom	5x5x8	x=y=8mm z=4mm	Mid/5805	14.07	0.495	1.6	9-02-2005
Top	5x5x8	x=y=8mm z=4mm	Mid/5765	13.99	0.275	1.6	9-02-2005
Top	9x9x13	x=y=4mm z=2.5mm	Mid/5765	13.85	0.319	1.6	9-02-2005
Front End	5x5x8	x=y=8mm z=4mm	Mid/5765	13.99	0.493	1.6	9-02-2005
Front End	9x9x13	x=y=4mm z=2.5mm	Mid/5765	13.85	0.494	1.6	11-03-2005

9.6 802.11a (5725MHz ~5825MHz, Turbo Mode) Test Result

SAR Measurement							
<i>Ambient Temperature (°C) : 22 ±1</i>					<i>Relative Humidity (%) : 53</i>		
<i>Liquid Temperature (°C) : 21.5±1</i>					<i>Depth of Liquid (cm) : >15</i>		
Product :							
Test Mode : 802.11a (5725MHz ~5825MHz, Turbo Mode) Right Antenna							
Test Position of EUT	Zoom Scan	Measurement Distance	Channel/ MHz	Conducted power (dBm)	SAR 1g (W/Kg)	Limit (W/Kg)	Test Date
Bottom	5x5x8	x=y=4mm z=2.5mm	Low/5760	13.09	0.597	1.6	8-30-2005
Bottom	9x9x13	x=y=4mm z=2.5mm	Low/5760	13.25	0.642	1.6	11-3-2005
Bottom	5x5x8	x=y=8mm z=4mm	High/5800	8.85	0.293	1.6	8-30-2005
Top	5x5x8	x=y=8mm z=4mm	Low/5760	13.09	0.210	1.6	8-30-2005
Front End	5x5x8	x=y=8mm z=4mm	Low/5760	13.09	0.429	1.6	8-30-2005
Front End	9x9x13	x=y=4mm z=2.5mm	Low/5760	14.76	0.448	1.6	11-3-2005
Test Mode : 802.11a (5725MHz ~5825MHz, Turbo Mode) Left Antenna							
Bottom	5x5x8	x=y=8mm z=4mm	Low/5760	13.09	0.448	1.6	8-30-2005
Bottom	9x9x13	x=y=4mm z=2.5mm	Low/5760	13.21	0.483	1.6	11-3-2005
Bottom	5x5x8	x=y=8mm z=4mm	High/5800	8.85	0.239	1.6	8-30-2005
Top	5x5x8	x=y=8mm z=4mm	Low/5760	13.09	0.220	1.6	8-30-2005
Front End	5x5x8	x=y=8mm z=4mm	Low/5760	13.09	0.427	1.6	8-30-2005
Front End	9x9x13	x=y=4mm z=2.5mm	Low/5760	13.21	0.416	1.6	11-3-2005

10. SAR System Validation Data

10.1 5200 MHz System Validation Data

Validation date : 03-Nov-2005
Measurement Date : 03-Nov-2005

Product Data

Device Name : Dipole-5200
Serial No. : 230-00802
Type : Dipole
Model : ALS-D-5200-S-2
Frequency : 5200.00 MHz
Max. Transmit Pwr : 1 W
Drift Time : 0 min(s)
Length : 23.4 mm
Width : 3.6 mm
Depth : 15.4 mm
Antenna Type : Internal
Orientation : Touch
Power Drift-Start : 68.183 W/kg
Power Drift-Finish : 66.191 W/kg
Power Drift (%) : -2.921

Phantom Data

Name : APREL-Uni
Type : Uni-Phantom
Size (mm) : 280 x 280 x 200
Serial No. : System Default
Location : Center
Description : uni_1

Tissue Data

Type : HEAD
Serial No. : 5200-H-AU-18
Frequency : 5200.00 MHz
Last Calib. Date : 03-Nov-2005
Temperature : 22.10 °C
Ambient Temp. : 22.70 °C
Humidity : 57.00 RH%
Epsilon : 37.63 F/m
Sigma : 4.862 S/m
Density : 1000.00 kg/cu. m

Probe Data

Name : E-field Probe
Model : ALS-E-020
Type : E-Field Triangle

International Standards Laboratory

Report Number: ISL-05LR025SAR-F-2

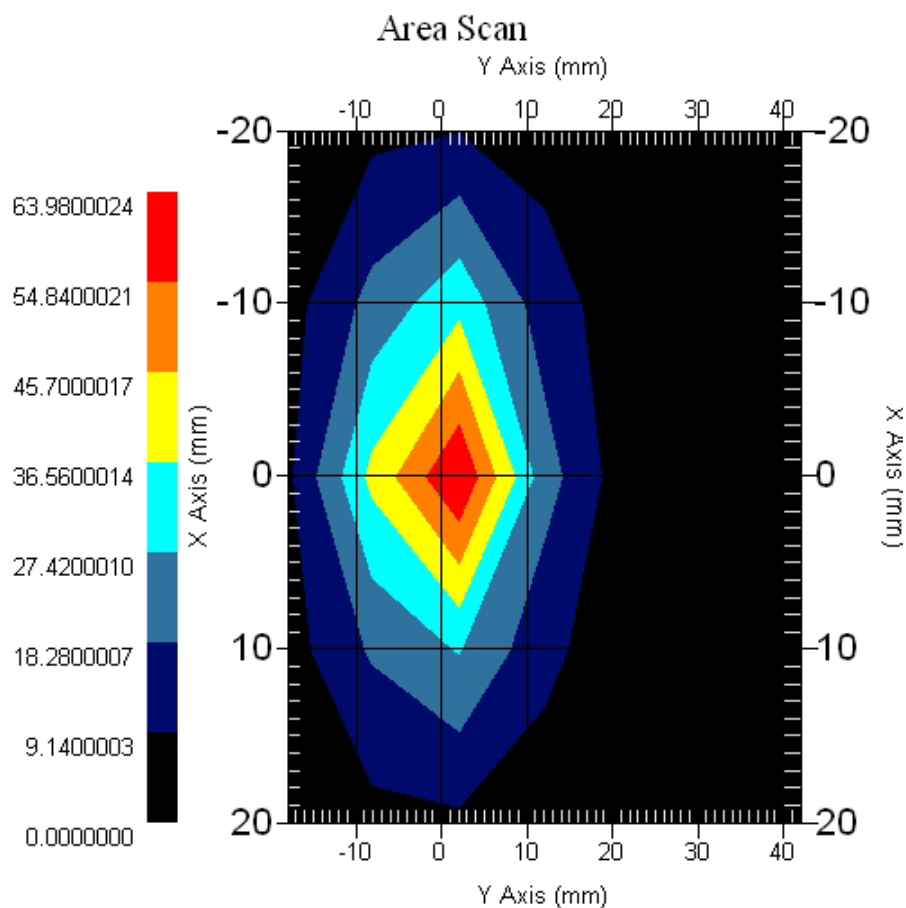
HC LAB: NVLAP:200234-0; VCCI: R-341,C-354; NEMKO: ELA 113a,113c; BSMI: SL2-IN-E-0037; SL2-R1-E-0037; CNLA: 1178

LT LAB: NVLAP:200234-0; VCCI: R-1435,C-1440; NEMKO: ELA 113b,113d; BSMI: SL2-IN-E-0013; CNLA: 0997

Serial No. : 266
Last Calib. Date : 16-Mar-2005
Frequency : 5200.00 MHz
Duty Cycle Factor : 1
Conversion Factor : 3.8
Probe Sensitivity : 1.20 1.20 1.20 $\mu\text{V}/(\text{V}/\text{m})^2$
Compression Point : 95.00 mV
Offset : 1.56 mm

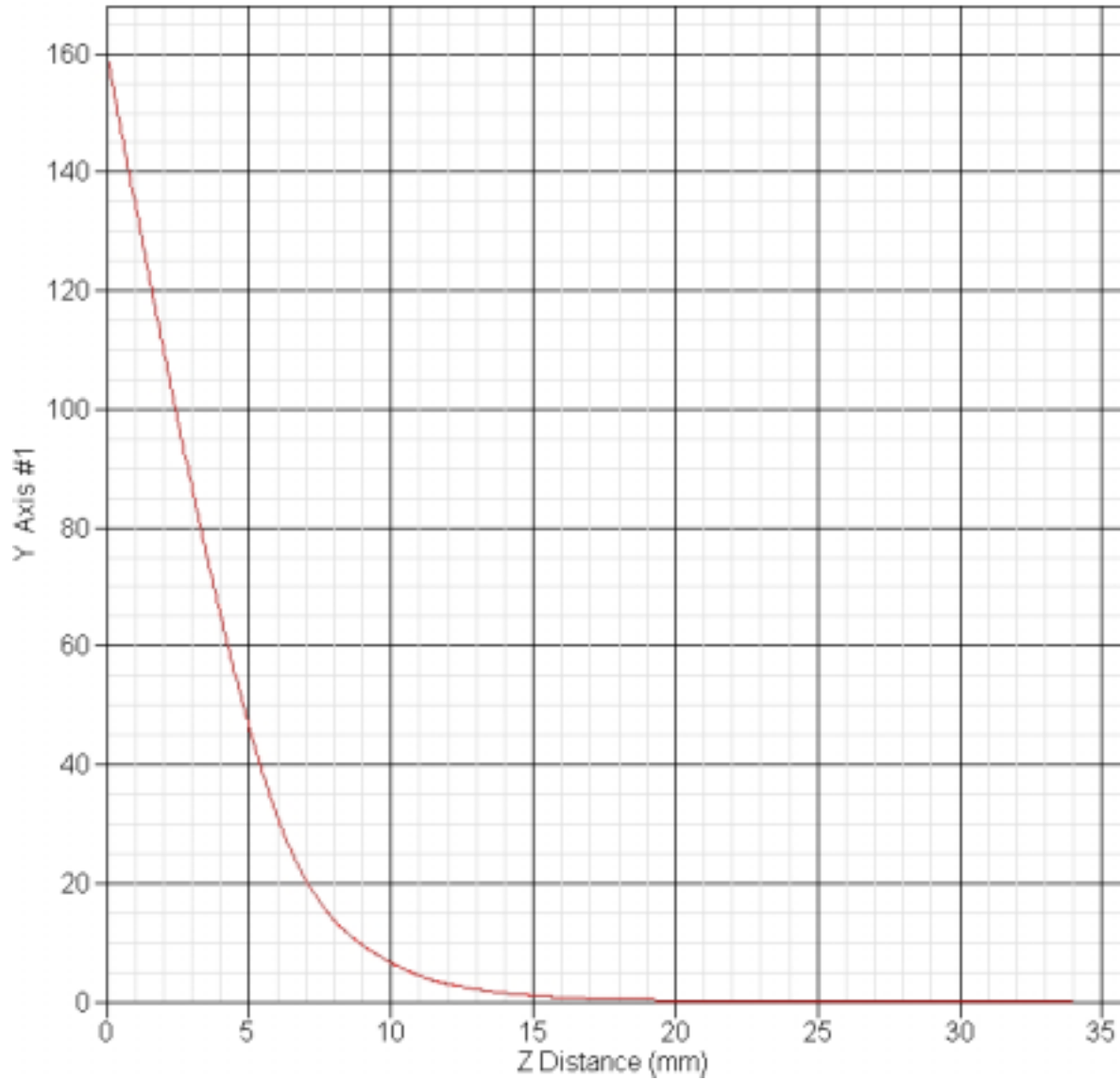
Measurement Data

Crest Factor : 1
Tissue Temp. : 22.10 °C
Ambient Temp. : 22.70 °C
Area Scan : 5x7x1 : Measurement x=10mm, y=10mm, z=4mm
Zoom Scan : 9x9x13 : Measurement x=4mm, y=4mm, z=2.5mm
Frequency : 5200MHz



1 gram SAR value : 59.420 W/kg
10 gram SAR value : 19.329 W/kg
Area Scan Peak SAR : 63.977 W/kg
Zoom Scan Peak SAR : 160.130 W/kg

SAR-Z Axis
at Hotspot x:0.40 y:-4.30



10.2 5800 MHz System Validation Data

Validation date : 03-Nov-2005

Measurement Date : 03-Nov-2005

Product Data

Device Name : Dipole-5800

Serial No. : 240-00852

Type : Dipole

Model : ALS-D-5800-S-2

Frequency : 5800.00 MHz

Max. Transmit Pwr : 1 W

Drift Time : 0 min(s)

Length : 21.4 mm

Width : 3.6 mm

Depth : 14.7 mm

Antenna Type : Internal

Orientation : Touch

Power Drift-Start : 66.134 W/kg

Power Drift-Finish: 68.720 W/kg

Power Drift (%) : 3.910

Phantom Data

Name : APREL-Uni

Type : Uni-Phantom

Size (mm) : 280 x 280 x 200

Serial No. : System Default

Location : Center

Description : uni_1

Tissue Data

Type : HEAD

Serial No. : 5800-H-AU-19

Frequency : 5800.00 MHz

Last Calib. Date : 03-Nov-2005

Temperature : 22.10 °C

Ambient Temp. : 22.70 °C

Humidity : 57.00 RH%

Epsilon : 36.45 F/m

Sigma : 5.503 S/m

Density : 1000.00 kg/cu. m

Probe Data

Name : E-field Probe

Model : ALS-E-020

Type : E-Field Triangle

Serial No. : 266

Last Calib. Date : 16-Mar-2005

Frequency : 5800.00 MHz

Duty Cycle Factor: 1

Conversion Factor: 3.7

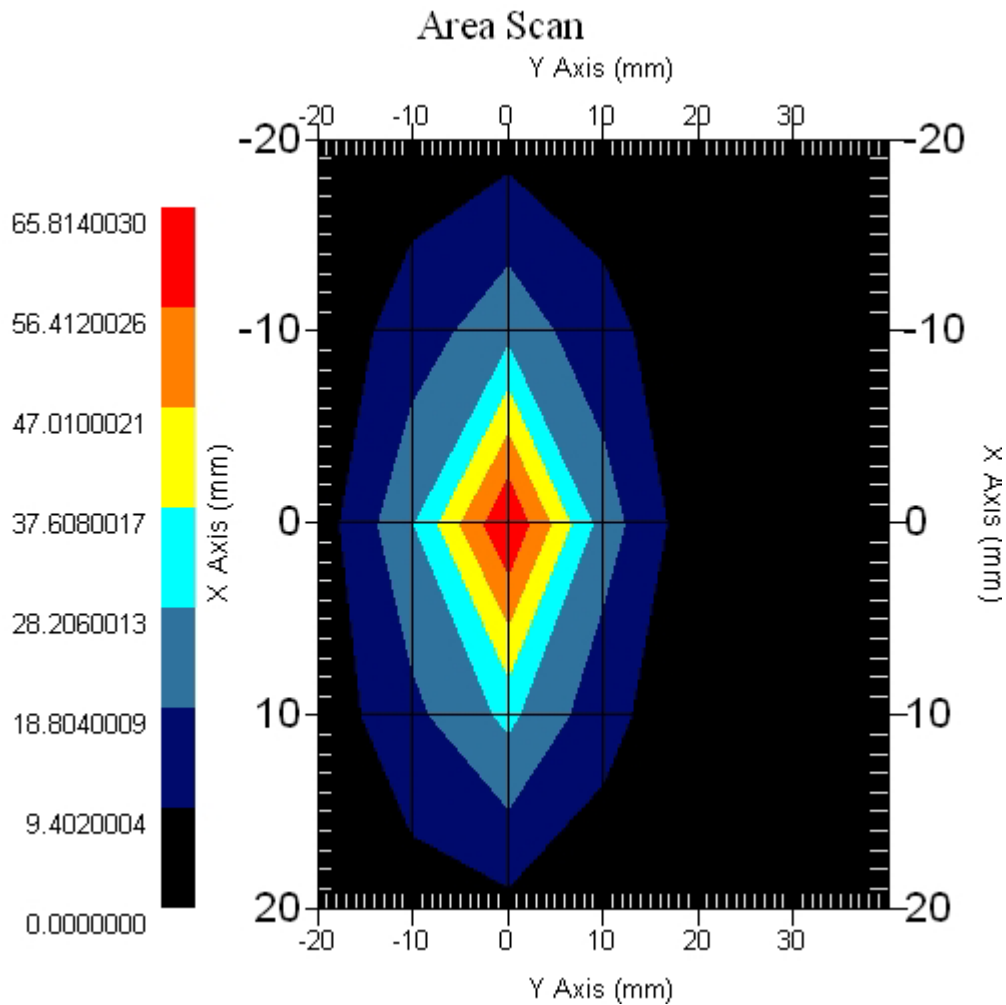
Probe Sensitivity: 1.20 1.20 1.20 $\mu\text{V}/(\text{V}/\text{m})^2$

Compression Point: 95.00 mV

Offset : 1.56 mm

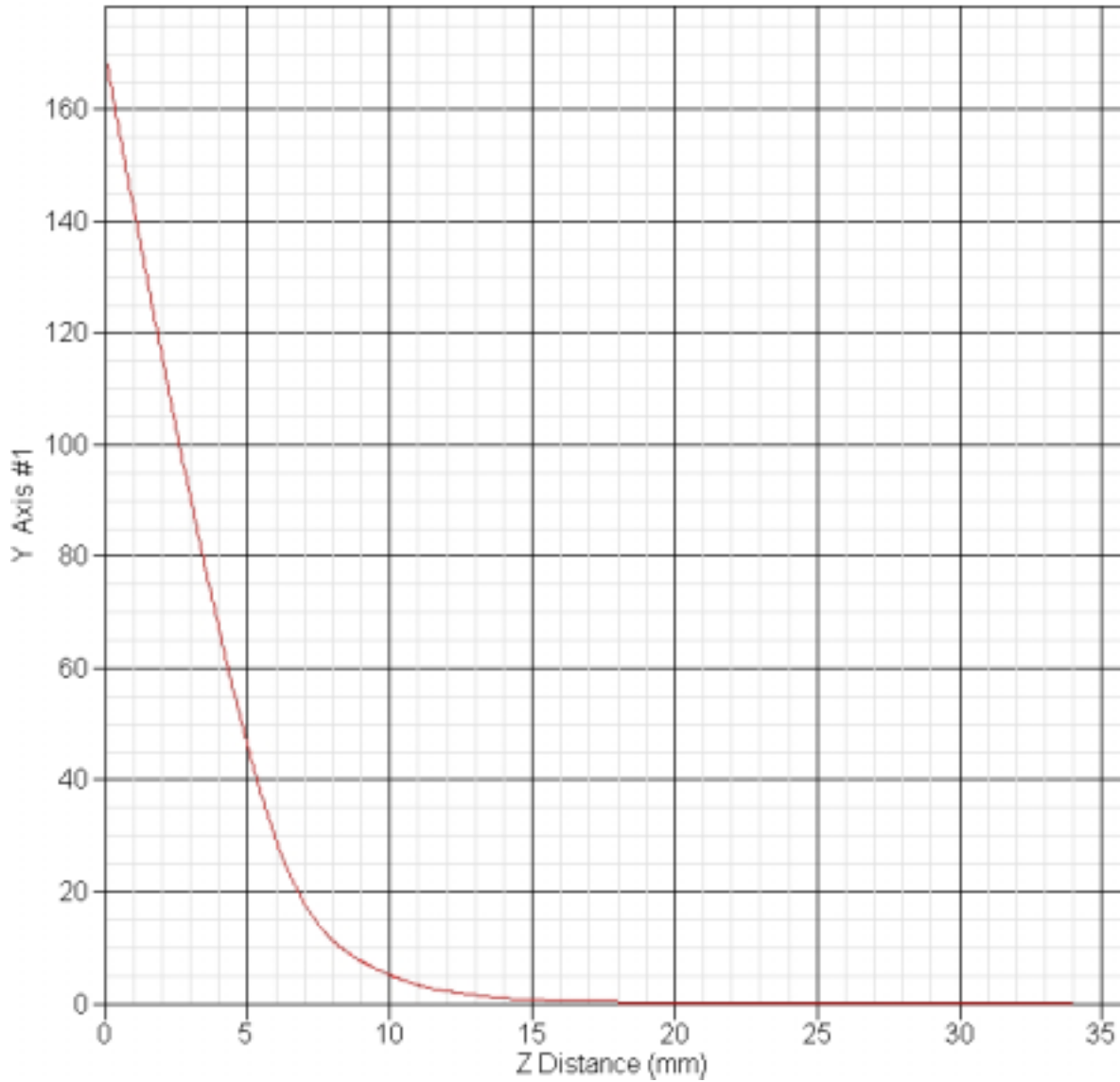
Measurement Data

Crest Factor : 1
Tissue Temp. : 22.10 °C
Ambient Temp. : 22.70 °C
Area Scan : 5x7x1 : Measurement x=10mm, y=10mm, z=4mm
Zoom Scan : 9x9x13 : Measurement x=4mm, y=4mm, z=2.5mm
Frequency : 5800MHz



1 gram SAR value : 58.244 W/kg
10 gram SAR value : 17.780 W/kg
Area Scan Peak SAR : 65.811 W/kg
Zoom Scan Peak SAR : 170.136 W/kg

SAR-Z Axis
at Hotspot x:0.40 y:-6.30



11. 5200 MHz SAR measurement Data

ALSAS-10U Ver 2.2.0 SAR Test Report

Validation date : 03-Nov-2005
Measurement Date : 03-Nov-2005

Product Data

Device Name : PCMCIA CARDBUS
Model : CB9
Frequency : 5200 MHz
Drift Time : 0 min(s)
Length : 118 mm
Width : 54 mm
Depth : 8.8 mm
Antenna Type : Internal

Phantom Data

Name : APREL-Uni
Type : Uni-Phantom
Size (mm) : 280 x 280 x 200
Location : Center

Tissue Data

Type : BODY
Serial No. : 5200B0816
Frequency : 5200.00 MHz
Last Calib. Date : 03-Nov-2005
Temperature : 22.10 °C
Ambient Temp. : 22.70 °C
Humidity : 57.00 RH%
Epsilon : 51.63 F/m
Sigma : 5.337 S/m
Density : 1000.00 kg/cu. m

Probe Data

Name : E-field Probe
Model : ALS-E-020
Type : E-Field Triangle
Serial No. : 266
Last Calib. Date : 16-Mar-2005
Frequency : 5200.00 MHz
Duty Cycle Factor: 1
Conversion Factor: 4.4
Probe Sensitivity: 1.20 1.20 1.20 $\mu\text{V}/(\text{V}/\text{m})^2$
Compression Point: 95.00 mV
Offset : 1.56 mm

11.1 802.11a (5150MHz ~5350MHz, Normal Mode)

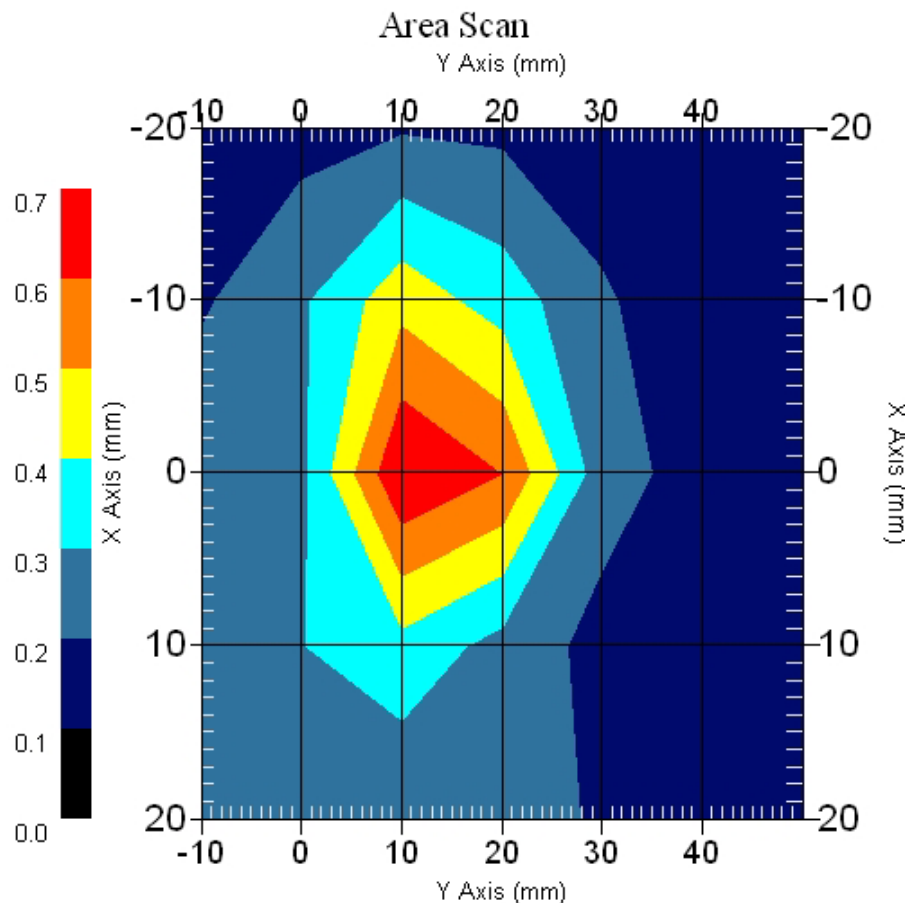
11.1.1 5240 MHz, Normal Mode, EUT Position: Bottom, Antenna: Left

Measurement Data

802.11a 5240MHz Normal Mode, Left Antenna

DUT Position : Bottom
Channel : Mid
Crest Factor : 1
Tissue Temp. : 22.10 °C
Ambient Temp. : 22.70 °C
Area Scan : 5x7x1 : Measurement x=10mm, y=10mm, z=4mm
Zoom Scan : 9x9x13 : Measurement x=4mm, y=4mm, z=2.5mm

Power Drift-Start : 0.288 W/kg
Power Drift-Finish: 0.297 W/kg
Power Drift (%) : 3.140



1 gram SAR value : 0.663 W/kg
10 gram SAR value : 0.315 W/kg
Area Scan Peak SAR : 0.700 W/kg
Zoom Scan Peak SAR : 1.691 W/kg

11.1.2 5260 MHz, Normal Mode, EUT Position: Front , Antenna: Right

Measurement Data

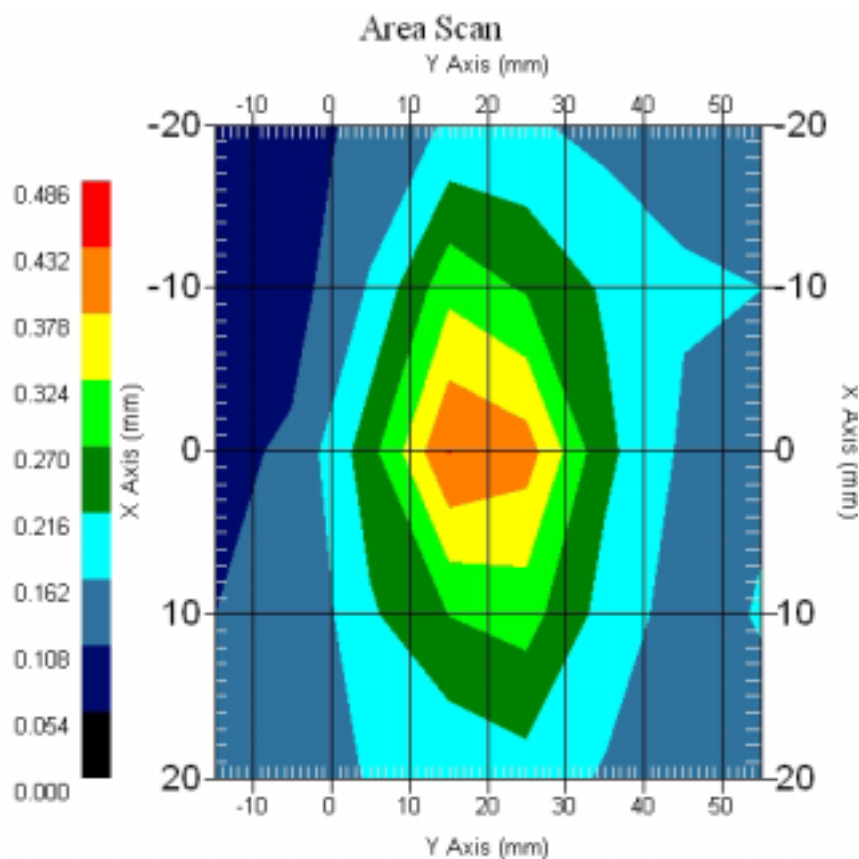
802.11a 5260 MHz, Normal Mode, Right Antenna

DUT Position : Front
Channel : Mid
Crest Factor : 1
Tissue Temp. : 22.10 °C
Ambient Temp. : 22.70 °C
Area Scan : 5x8x1 : Measurement x=10mm, y=10mm, z=4mm
Zoom Scan : 9x9x13 : Measurement x=4mm, y=4mm, z=2.5mm

Power Drift-Start : 0.225 W/kg

Power Drift-Finish: 0.217 W/kg

Power Drift (%) : -3.556



1 gram SAR value : 0.461 W/kg

10 gram SAR value : 0.231 W/kg

Area Scan Peak SAR : 0.433 W/kg

Zoom Scan Peak SAR : 1.160 W/kg

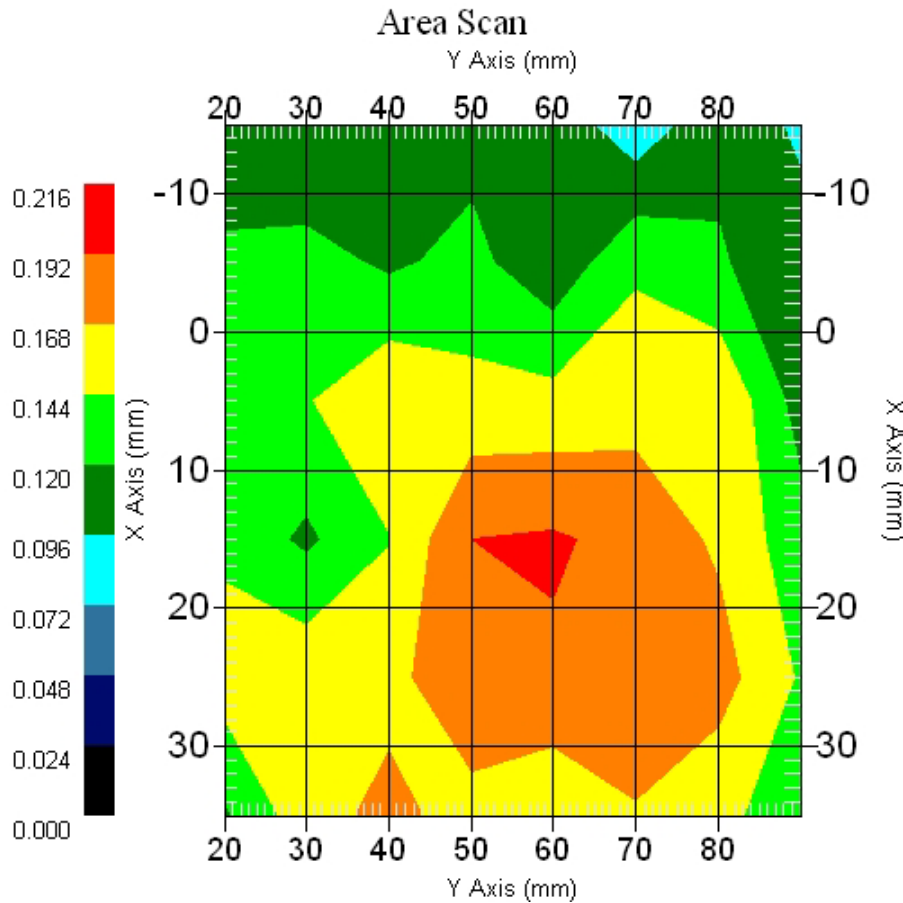
11.1.3 5260 MHz, Normal Mode, EUT Position: TOP , Antenna: Right

Measurement Data

802.11a 5260 MHz, Normal Mode, Right Antenna

DUT Position : Front
Channel : Mid
Crest Factor : 1
Tissue Temp. : 22.10 °C
Ambient Temp. : 22.70 °C
Area Scan : 6x8x1 : Measurement x=10mm, y=10mm, z=4mm
Zoom Scan : 9x9x13 : Measurement x=4mm, y=4mm, z=2.5mm

Power Drift-Start : 0.118 W/kg
Power Drift-Finish: 0.123 W/kg
Power Drift (%) : 4.362



1 gram SAR value : 0.194 W/kg
10 gram SAR value : 0.134 W/kg
Area Scan Peak SAR : 0.195 W/kg
Zoom Scan Peak SAR : 0.376 W/kg

11.2 802.11a (5150MHz ~5350MHz, Turbo Mode)

11.2.1 5210 MHz, Turbo Mode, EUT Position: Bottom, Antenna : Left

Measurement Data

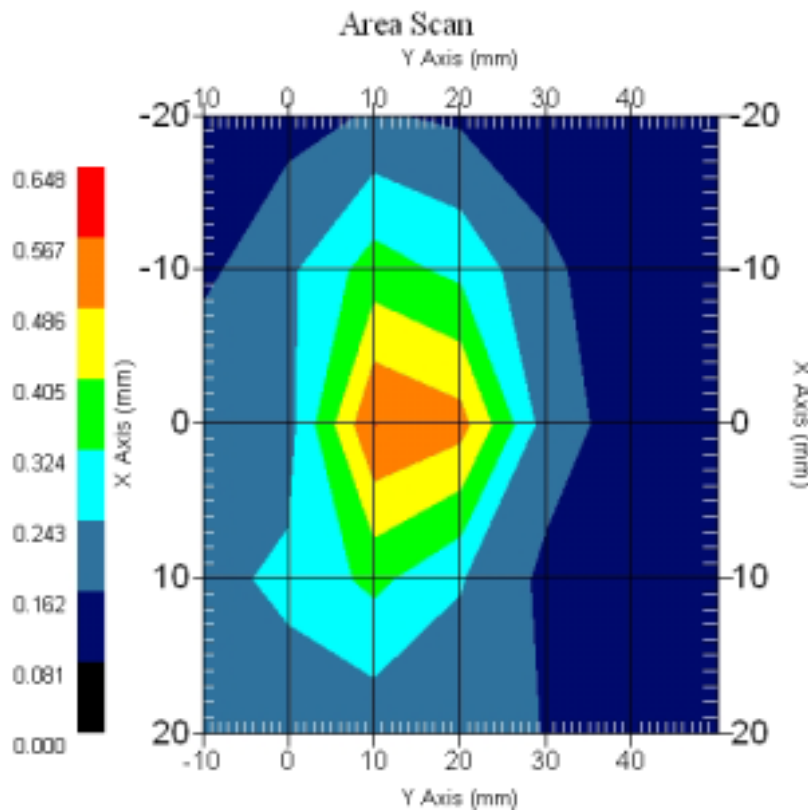
802.11a 5210MHz Turbo Mode, Right Antenna

DUT Position : Bottom
Channel : Low
Crest Factor : 1
Tissue Temp. : 22.10 °C
Ambient Temp. : 22.70 °C
Area Scan : 5x7x1 : Measurement x=10mm, y=10mm, z=4mm
Zoom Scan : 9x9x13 : Measurement x=4mm, y=4mm, z=2.5mm

Power Drift-Start : 0.231 W/kg

Power Drift-Finish: 0.227 W/kg

Power Drift (%) : -1.647



1 gram SAR value : 0.532 W/kg

10 gram SAR value : 0.259 W/kg

Area Scan Peak SAR : 0.568 W/kg

Zoom Scan Peak SAR : 1.311 W/kg

11.2.2 5250 MHz, Turbo Mode, EUT Position: Front, Antenna: Right

Measurement Data

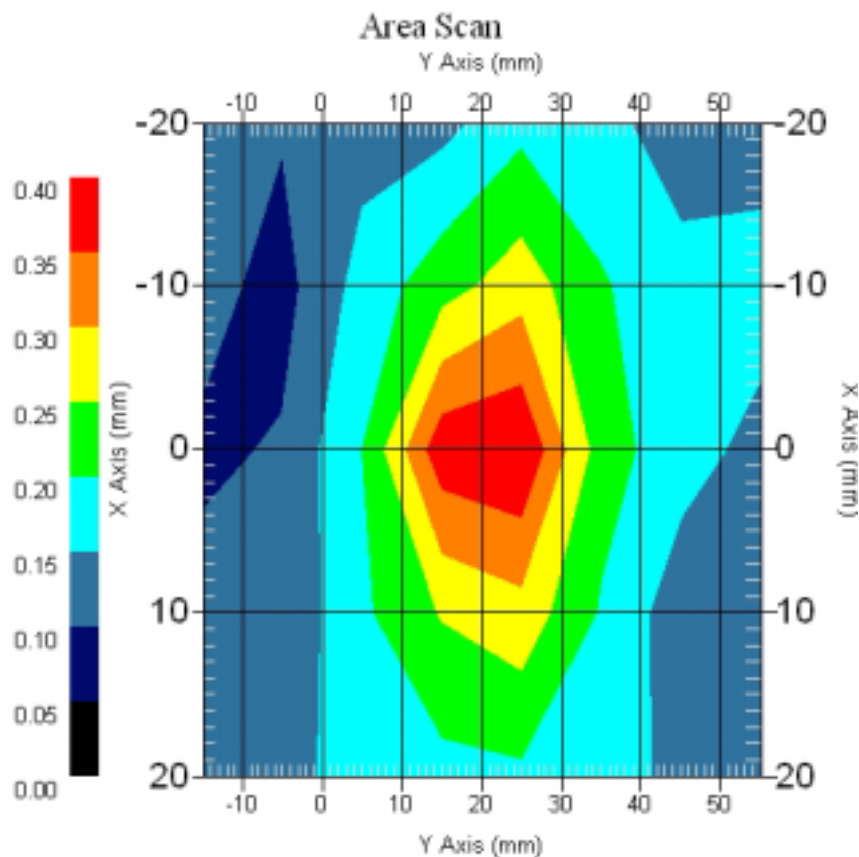
802.11a 5250 MHz, Turbo Mode, Right Antenna

DUT Position : Front
Channel : Mid
Crest Factor : 1
Tissue Temp. : 22.10 °C
Ambient Temp. : 22.70 °C
Area Scan : 5x8x1 : Measurement x=10mm, y=10mm, z=4mm
Zoom Scan : 9x9x13 : Measurement x=4mm, y=4mm, z=2.5mm

Power Drift-Start : 0.194 W/kg

Power Drift-Finish: 0.190 W/kg

Power Drift (%) : -2.210



1 gram SAR value : 0.391 W/kg
10 gram SAR value : 0.241 W/kg
Area Scan Peak SAR : 0.397 W/kg
Zoom Scan Peak SAR : 0.880 W/kg

11.2.3 5250 MHz, Turbo mode, EUT Position: Top, Antenna: Left

Measurement Data

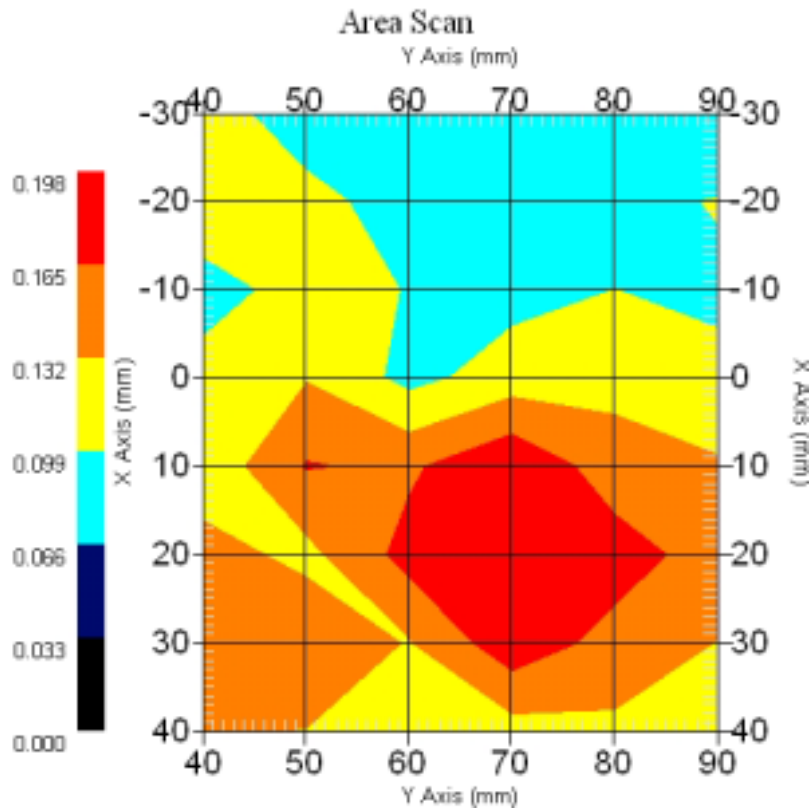
802.11a 5250 MHz, Turbo Mode, Left Antenna

DUT Position : Top
Channel : Mid
Crest Factor : 1
Tissue Temp. : 22.10 °C
Ambient Temp. : 22.70 °C
Area Scan : 8x6x1 : Measurement x=10mm, y=10mm, z=4mm
Zoom Scan : 9x9x13 : Measurement x=4mm, y=4mm, z=2.5mm

Power Drift-Start : 0.102 W/kg

Power Drift-Finish: 0.106 W/kg

Power Drift (%) : 3.922



1 gram SAR value : 0.270 W/kg

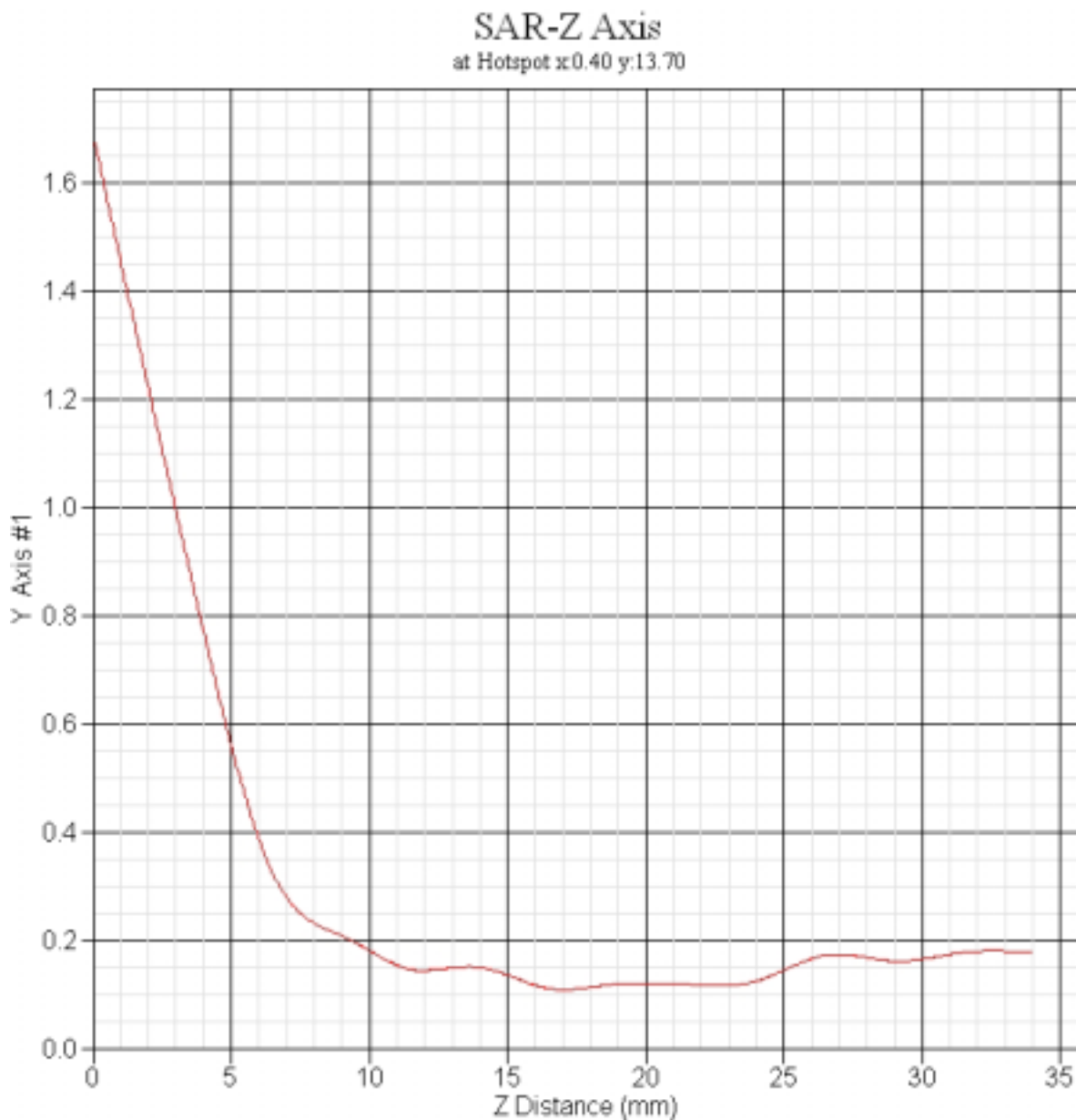
10 gram SAR value : 0.154 W/kg

Area Scan Peak SAR : 0.196 W/kg

Zoom Scan Peak SAR : 0.490 W/kg

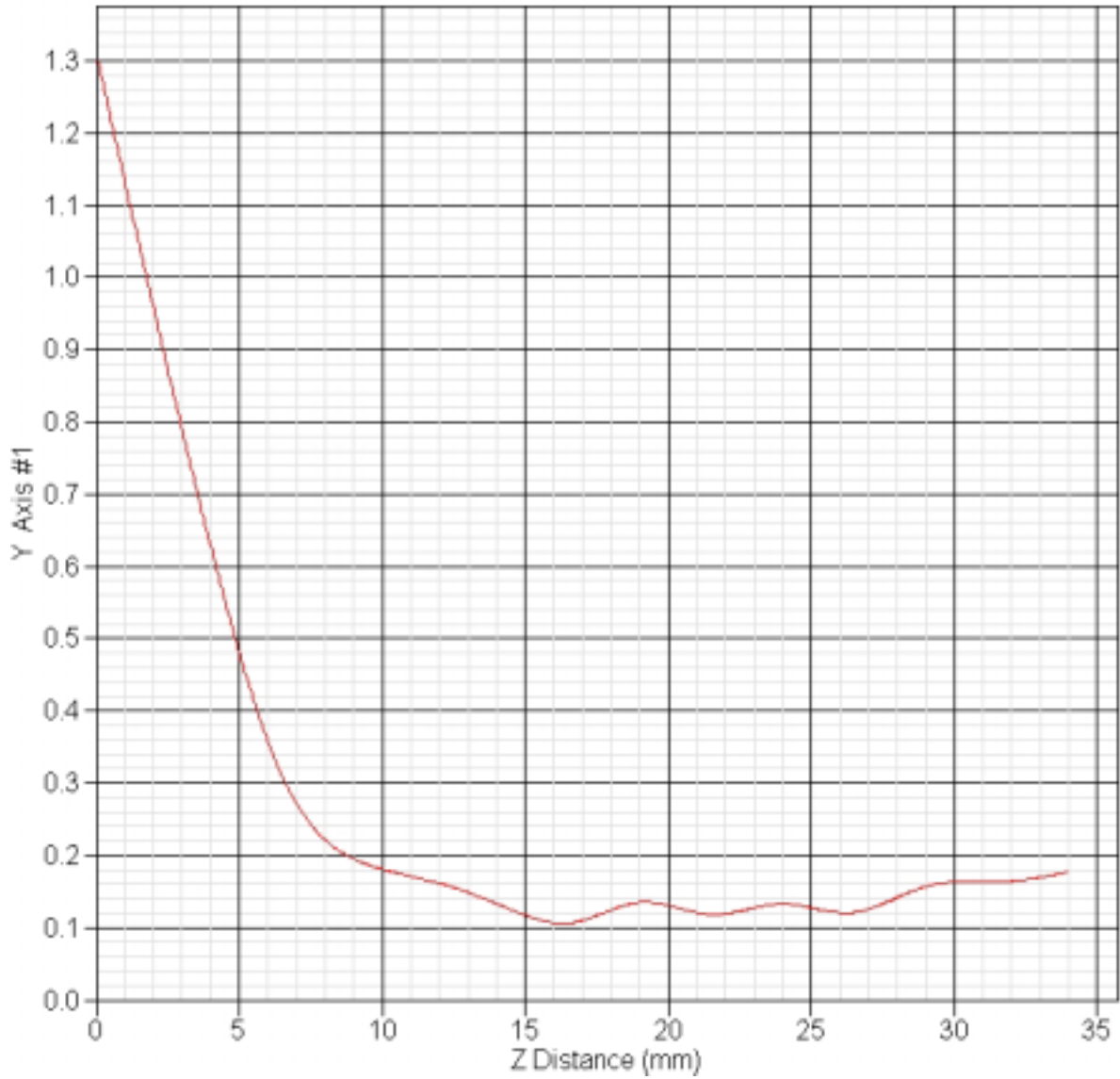
11.3 5200MHz Z-Axis plot

11.3.1 Frequency: 802.11a 5240MHz Normal Mode, EUT Bottom (Left Antenna)



11.3.2 Frequency: 802.11a 5210MHz Turbo Mode, EUT Bottom (Left Antenna)

SAR-Z Axis
at Hotspot x:0.40 y:13.70



12. 5800 MHz SAR measurement Data

ALSAS-10U Ver 2.2.0 SAR Test Report

Validation date : 3-Nov-2005
Measurement Date : 3-Nov-2005

Product Data

Device Name : PCMCIA CARDBUS
Model : CB9
Frequency : 5800 MHz
Drift Time : 0 min(s)
Length : 118 mm
Width : 54 mm
Depth : 8.8 mm
Antenna Type : Internal

Phantom Data

Name : APREL-Uni
Type : Uni-Phantom
Size (mm) : 280 x 280 x 200
Location : Center

Tissue Data

Type : BODY
Serial No. : 5800B081E
Frequency : 5800.00 MHz
Last Calib. Date : 3-Nov-2005
Temperature : 22.1 °C
Ambient Temp. : 22.70 °C
Humidity : 57.00 RH%
Epsilon : 50.51 F/m
Sigma : 6.275 S/m
Density : 1000.00 kg/cu. m

Probe Data

Name : E-field Probe
Model : ALS-E-020
Type : E-Field Triangle
Serial No. : 266
Last Calib. Date : 16-Mar-2005
Frequency : 5800.00 MHz
Duty Cycle Factor: 1
Conversion Factor: 4.2
Probe Sensitivity: 1.20 1.20 1.20 $\mu\text{V}/(\text{V}/\text{m})^2$
Compression Point: 95.00 mV
Offset : 1.56 mm

12.1 802.11a (5725MHz ~5825MHz, Normal Mode)

12.1.1 5765 MHz, Normal Mode, EUT Position: Front, Antenna: Right

Measurement Data

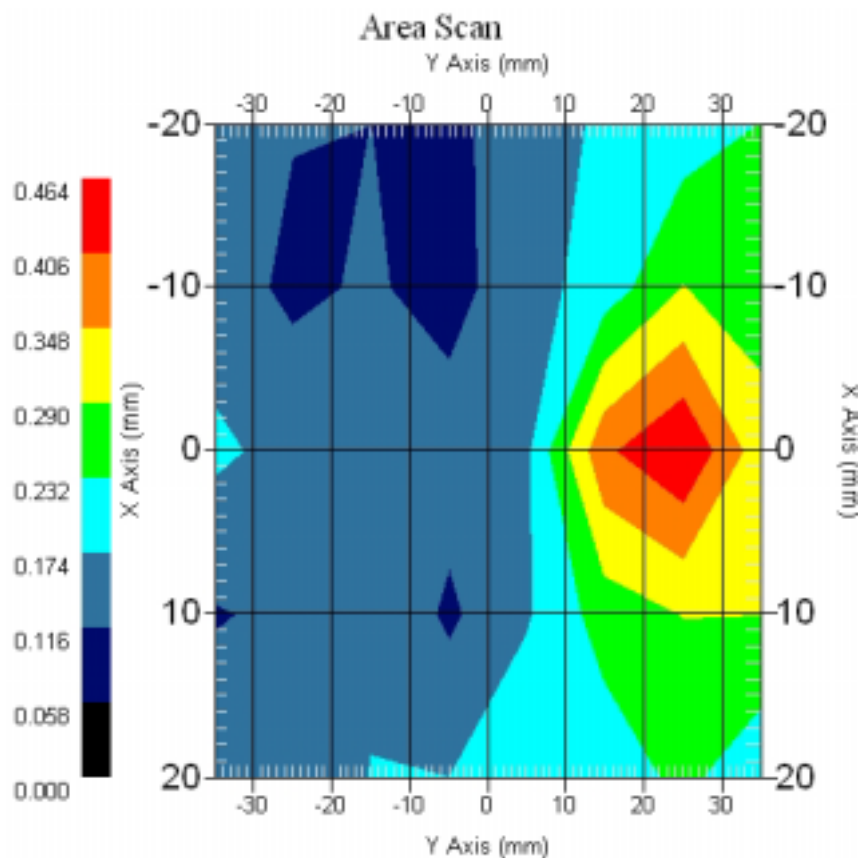
802.11a 5765 MHz, Normal Mode, Right Antenna

DUT Position : Bottom
Channel : Mid
Crest Factor : 1
Tissue Temp. : 22.1 °C
Ambient Temp. : 22.7 °C
Area Scan : 5x8x1 : Measurement x=10mm, y=10mm, z=4mm
Zoom Scan : 9x9x13 : Measurement x=4mm, y=4mm, z=2.5mm

Power Drift-Start : 0.187 W/kg

Power Drift-Finish: 0.193 W/kg

Power Drift (%) : 3.209



1 gram SAR value : 0.447 W/kg

10 gram SAR value : 0.248 W/kg

Area Scan Peak SAR : 0.460 W/kg

Zoom Scan Peak SAR : 1.120 W/kg

12.1.2 5765 MHz, Normal Mode, EUT Position: Bottom, Antenna: Left

Measurement Data

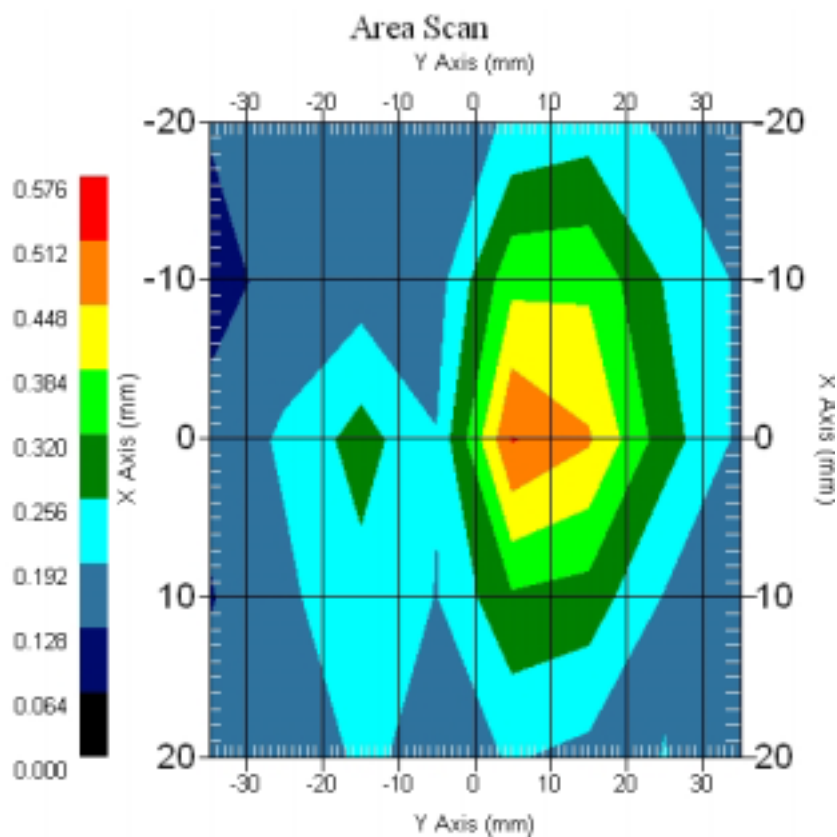
802.11a 5765 MHz Normal Mode, Left Antenna

DUT Position : Bottom
Channel : Mid
Crest Factor : 1
Tissue Temp. : 22.10 °C
Ambient Temp. : 22.70 °C
Area Scan : 5x8x1 : Measurement x=10mm, y=10mm, z=4mm
Zoom Scan : 9x9x13 : Measurement x=4mm, y=4mm, z=2.5mm

Power Drift-Start : 0.376 W/kg

Power Drift-Finish: 0.388 W/kg

Power Drift (%) : 3.191



1 gram SAR value : 0.515 W/kg

10 gram SAR value : 0.268 W/kg

Area Scan Peak SAR : 0.515 W/kg

Zoom Scan Peak SAR : 1.261 W/kg

12.1.3 5765 MHz, Normal Mode, EUT Position: Front, Antenna: Left

Measurement Data

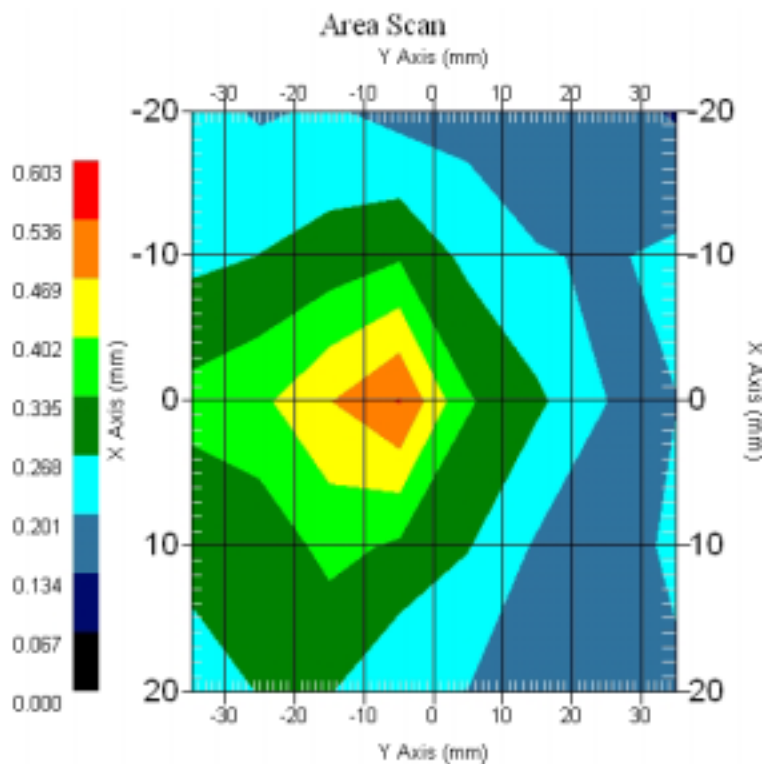
802.11a 5765 MHz, Normal Mode, Left Antenna

DUT Position : Bottom
Channel : Mid
Crest Factor : 1
Tissue Temp. : 22.10 °C
Ambient Temp. : 22.70 °C
Area Scan : 5x8x1 : Measurement x=10mm, y=10mm, z=4mm
Zoom Scan : 9x9x13 : Measurement x=4mm, y=4mm, z=2.5mm

Power Drift-Start : 0.511 W/kg

Power Drift-Finish: 0.493 W/kg

Power Drift (%) : -3.523



1 gram SAR value : 0.494 W/kg

10 gram SAR value : 0.280 W/kg

Area Scan Peak SAR : 0.539 W/kg

Zoom Scan Peak SAR : 1.090 W/kg

12.1.4 5765 MHz, EUT Position: Top, Antenna: Left

Measurement Data

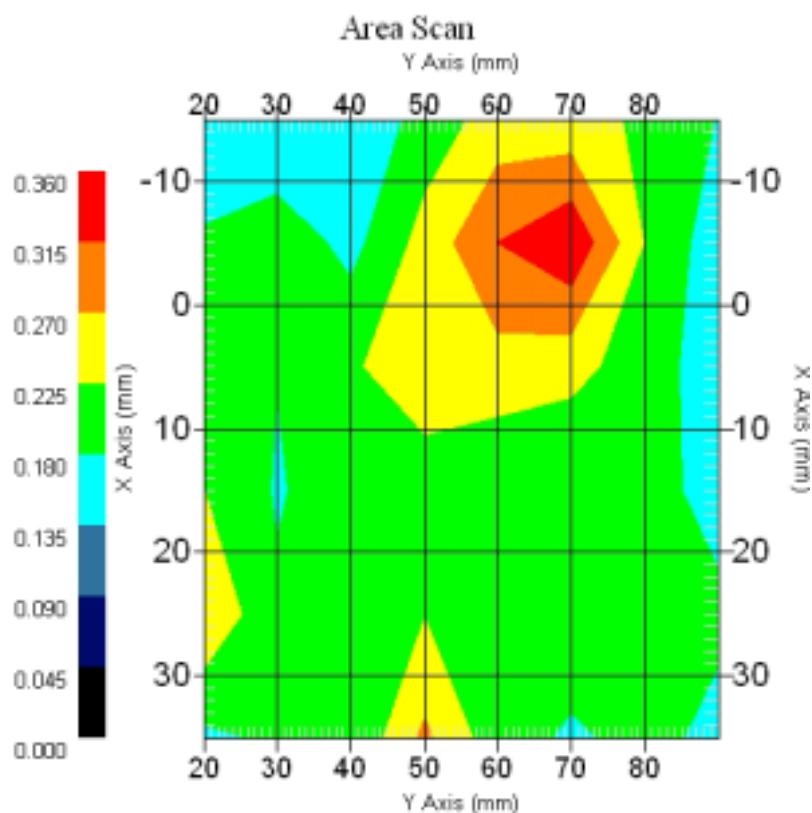
802.11a 5765 MHz, Normal Mode, Left Antenna

DUT Position : Top
Channel : Mid
Crest Factor : 1
Tissue Temp. : 22.10 °C
Ambient Temp. : 22.70 °C
Area Scan : 6x8x1 : Measurement x=10mm, y=10mm, z=4mm
Zoom Scan : 9x9x13 : Measurement x=4mm, y=4mm, z=2.5mm

Power Drift-Start : 0.162 W/kg

Power Drift-Finish: 0.156 W/kg

Power Drift (%) : -3.704



1 gram SAR value : 0.319 W/kg

10 gram SAR value : 0.204 W/kg

Area Scan Peak SAR : 0.356 W/kg

Zoom Scan Peak SAR : 0.460 W/kg

12.2 802.11a (5725MHz ~5825MHz, Turbo Mode)

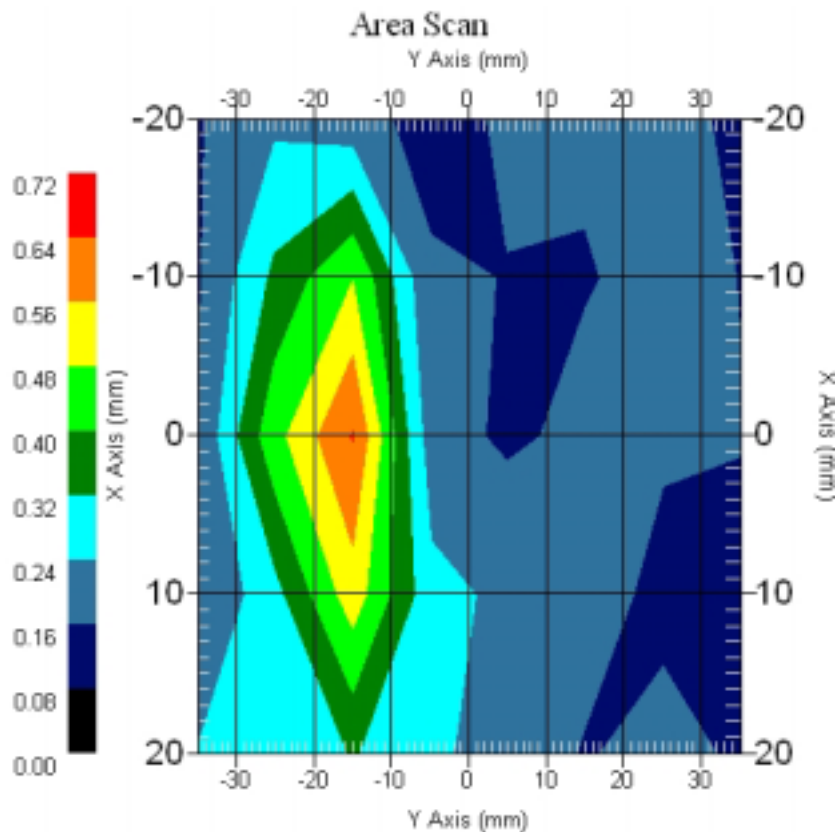
12.2.1 5760 MHz, Turbo mode, EUT Position: Bottom, Antenna: Right

Measurement Data

802.11a 5760 MHz, Turbo Mode, Right Antenna

DUT Position : Bottom
Channel : Low
Crest Factor : 1
Tissue Temp. : 22.10 °C
Ambient Temp. : 22.70 °C
Area Scan : 5x8x1 : Measurement x=10mm, y=10mm, z=4mm
Zoom Scan : 9x9x13 : Measurement x=4mm, y=4mm, z=2.5mm

Power Drift-Start : 0.182 W/kg
Power Drift-Finish: 0.183 W/kg
Power Drift (%) : 0.673



1 gram SAR value : 0.642 W/kg
10 gram SAR value : 0.309 W/kg
Area Scan Peak SAR : 0.644 W/kg
Zoom Scan Peak SAR : 1.701 W/kg

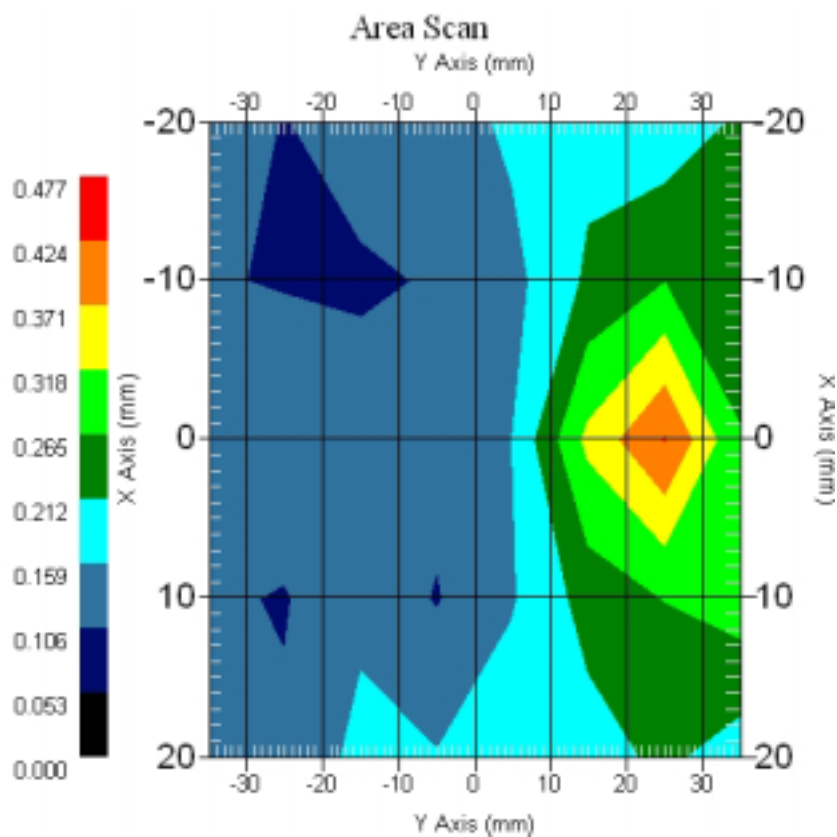
12.2.2 5760 MHz, Turbo mode, EUT Position: Front, Antenna: Right

Measurement Data

802.11a 5800MHz Turbo Mode, Right Antenna

DUT Position : Bottom
Channel : High – 5
Crest Factor : 1
Tissue Temp. : 22.10 °C
Ambient Temp. : 22.70 °C
Area Scan : 5x8x1 : Measurement x=10mm, y=10mm, z=4mm
Zoom Scan : 9x9x13 : Measurement x=4mm, y=4mm, z=2.5mm

Power Drift-Start : 0.174 W/kg
Power Drift-Finish: 0.180 W/kg
Power Drift (%) : 3.448



1 gram SAR value : 0.448 W/kg
10 gram SAR value : 0.244 W/kg
Area Scan Peak SAR : 0.426 W/kg
Zoom Scan Peak SAR : 1.040 W/kg

12.2.3 5760 MHz, Turbo Mode, EUT Position: Bottom, Antenna: Left

Measurement Data

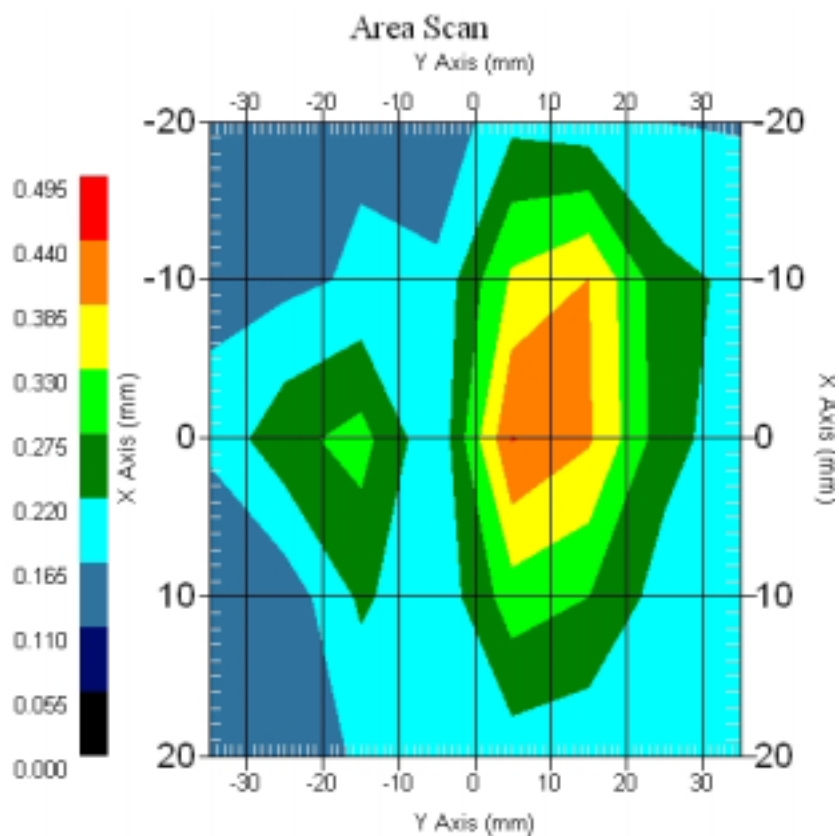
802.11a 5760 MHz, Turbo Mode, Left Antenna

DUT Position : Bottom
Channel : Low
Crest Factor : 1
Tissue Temp. : 22.10 °C
Ambient Temp. : 22.70 °C
Area Scan : 5x8x1 : Measurement x=10mm, y=10mm, z=4mm
Zoom Scan : 9x9x13 : Measurement x=4mm, y=4mm, z=2.5mm

Power Drift-Start : 0.336 W/kg

Power Drift-Finish: 0.331 W/kg

Power Drift (%) : -1.488



1 gram SAR value : 0.483 W/kg

10 gram SAR value : 0.267 W/kg

Area Scan Peak SAR : 0.442 W/kg

Zoom Scan Peak SAR : 1.110 W/kg

12.2.4 5760 MHz, Turbo mode, EUT Position: Front , Antenna: Left

Measurement Data

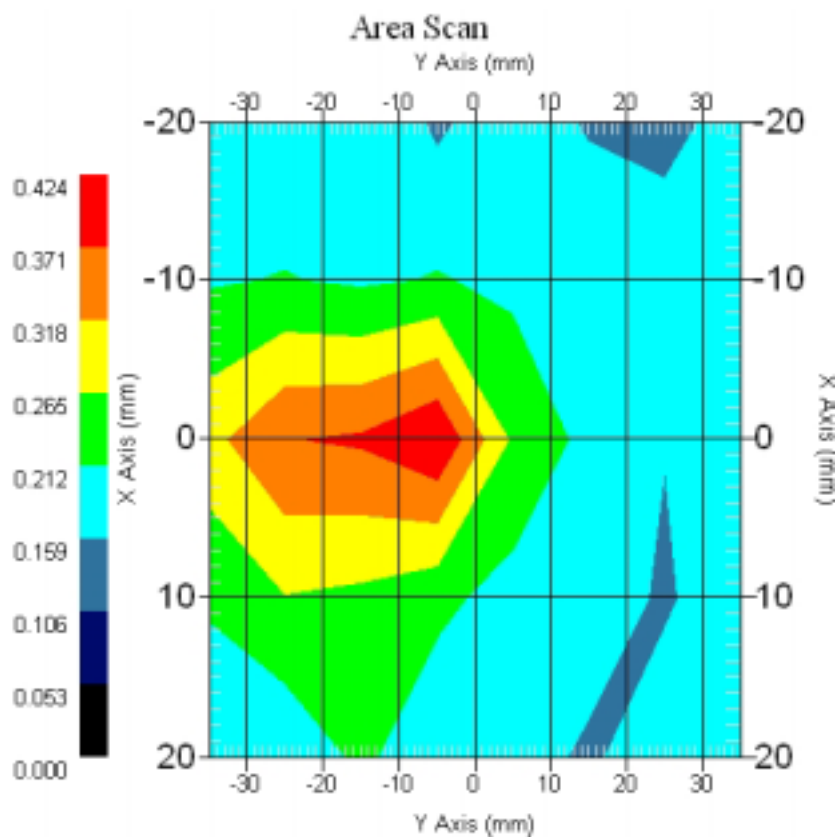
802.11a 5760 MHz, Turbo Mode, Left Antenna

DUT Position : Front
Channel : Low
Crest Factor : 1
Tissue Temp. : 22.10 °C
Ambient Temp. : 22.70 °C
Area Scan : 5x8x1 : Measurement x=10mm, y=10mm, z=4mm
Zoom Scan : 9x9x13 : Measurement x=4mm, y=4mm, z=2.5mm

Power Drift-Start : 0.419 W/kg

Power Drift-Finish: 0.402 W/kg

Power Drift (%) : -4.057



1 gram SAR value : 0.416 W/kg

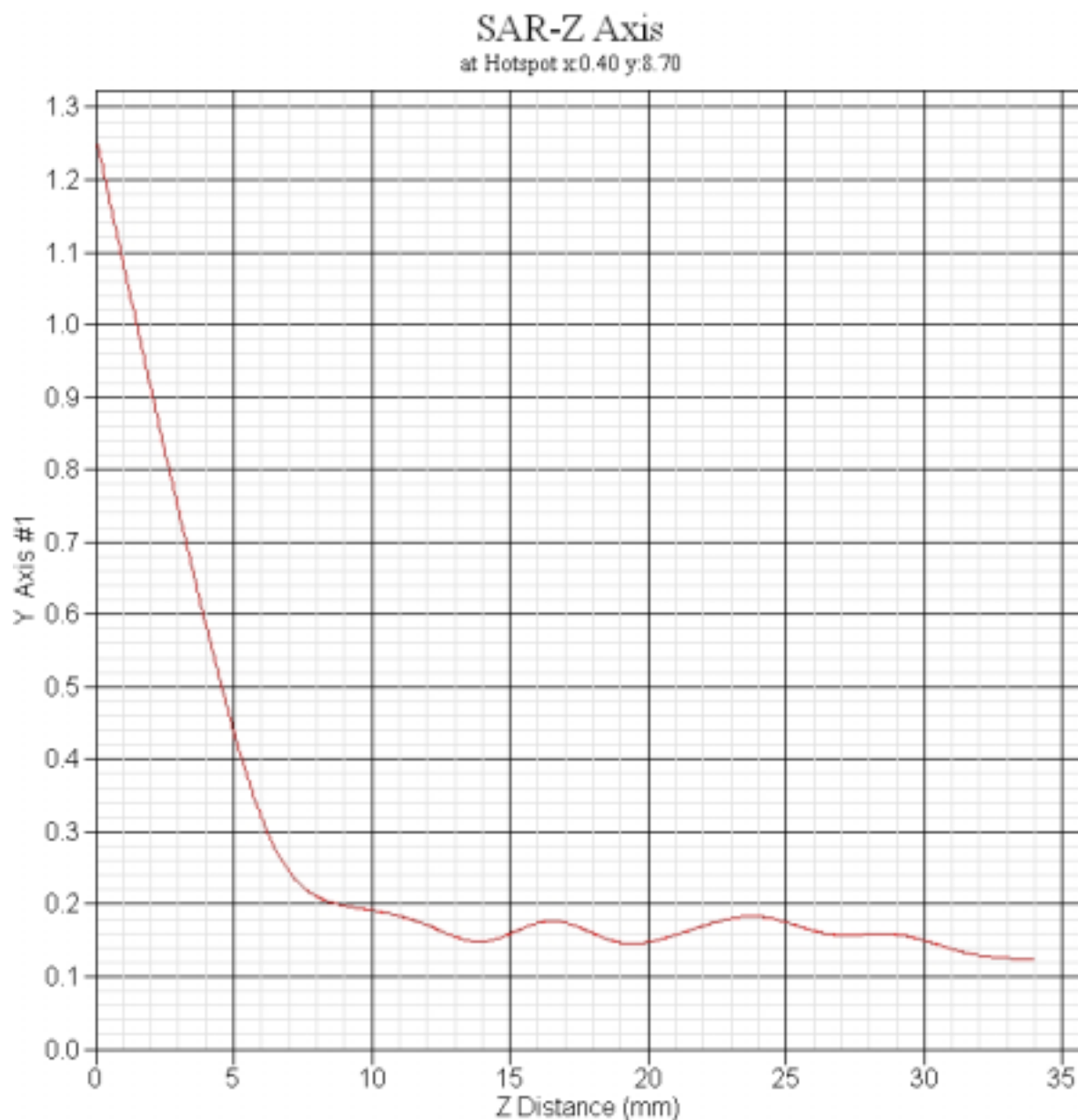
10 gram SAR value : 0.229 W/kg

Area Scan Peak SAR : 0.421 W/kg

Zoom Scan Peak SAR : 0.960 W/kg

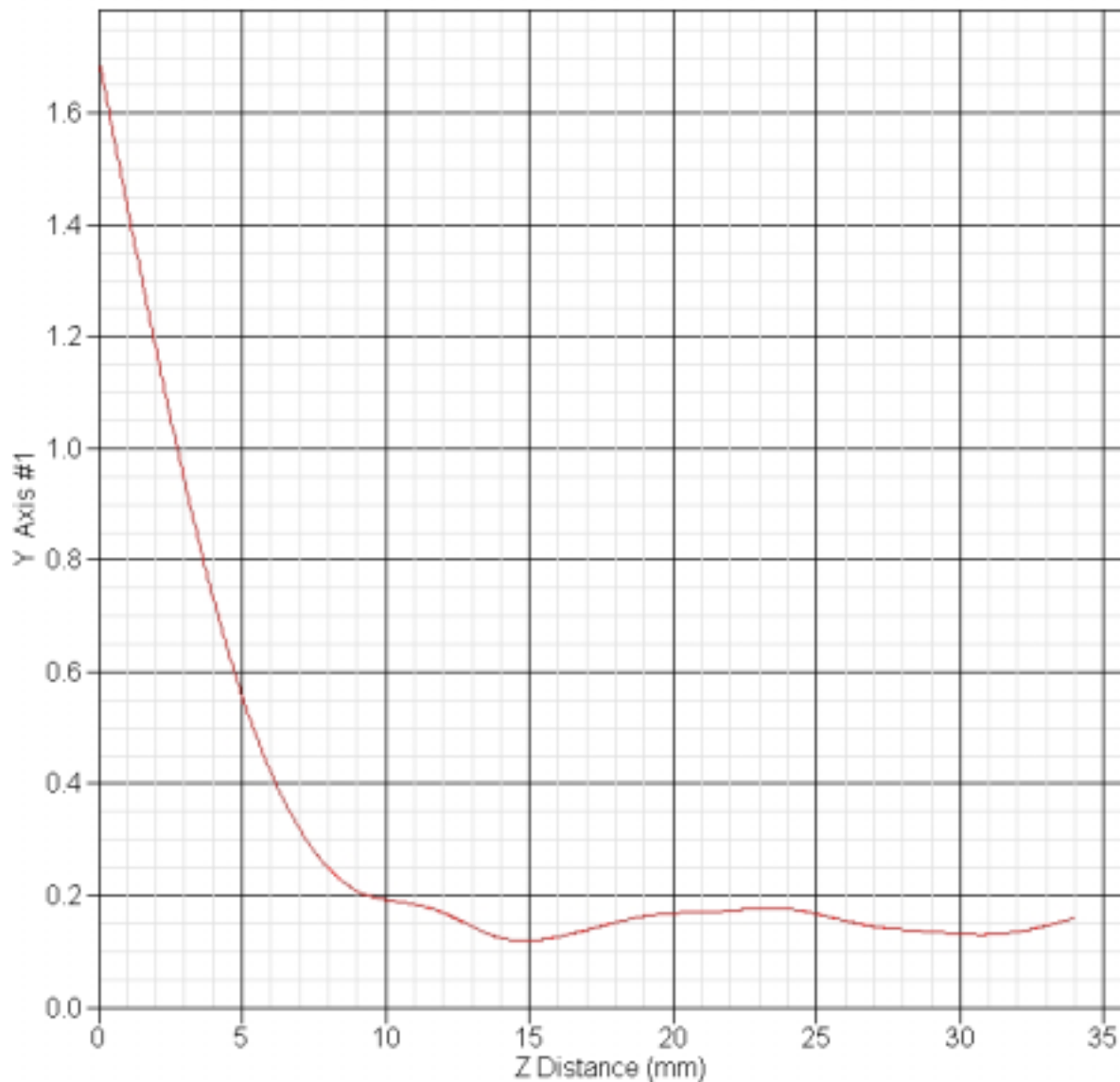
12.3 5800MHz Z-Axis plot

12.3.1 Frequency: 802.11a 5765 MHz Normal Mode, EUT Bottom (Left Antenna)



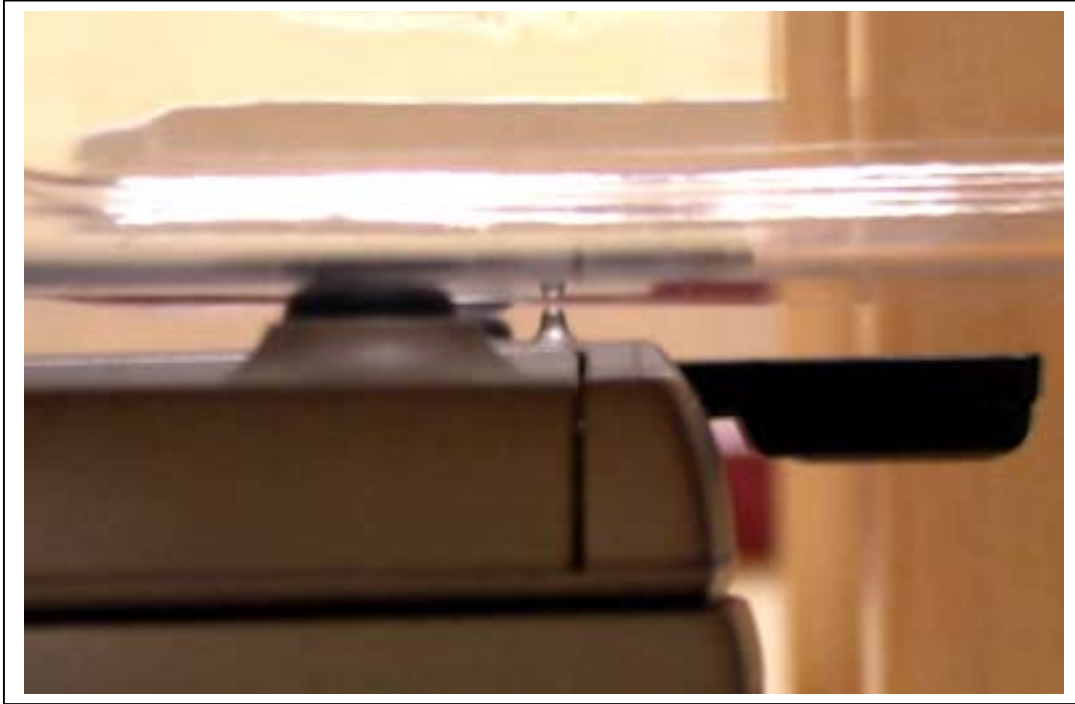
12.3.2 Frequency: 802.11a 5760MHz Turbo Mode, EUT Bottom (Right Antenna)

SAR-Z Axis
at Hotspot x:0.40 y:-19.00

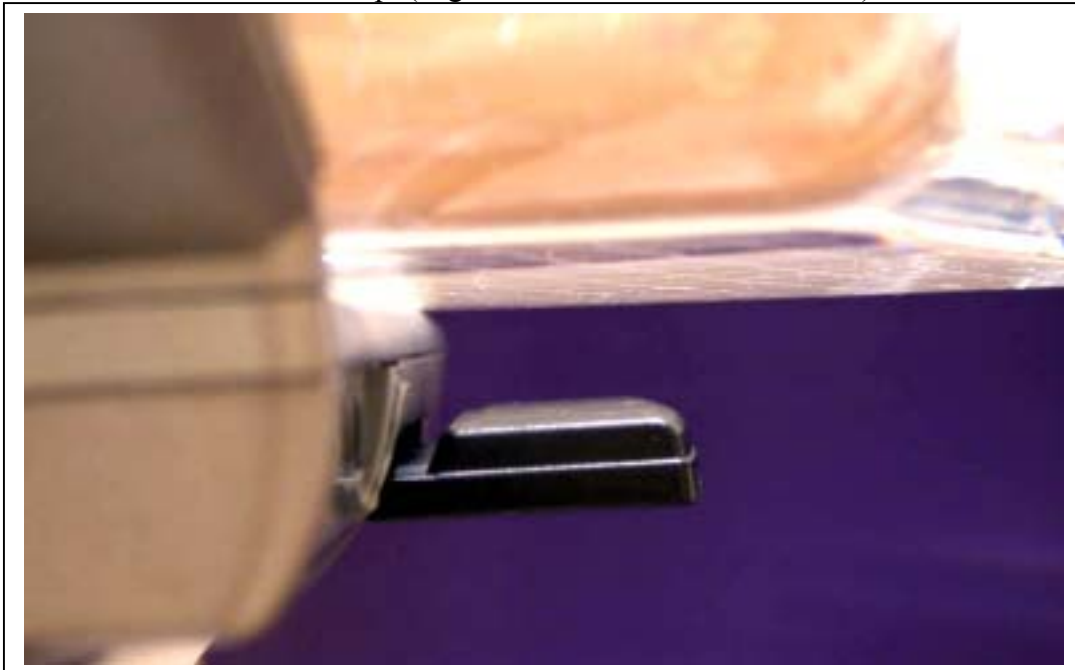


13. Test Setup Photographs

13.1 Test Position : EUT Bottom (Right Antenna and Left Antenna)



13.2 Test Position : EUT Top (Right Antenna and Left Antenna)



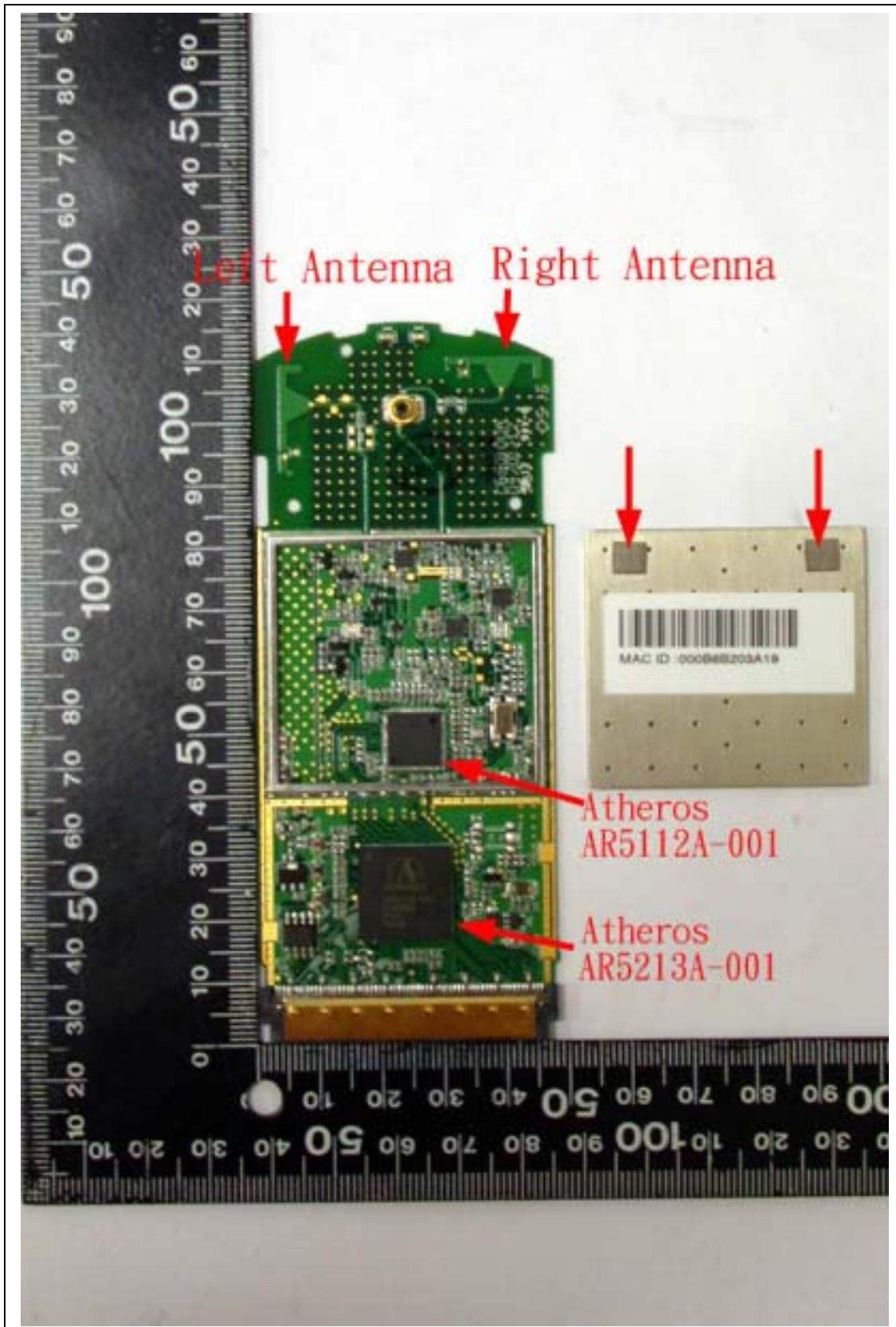
Test Position : EUT Front (Right Antenna and Left Antenna)

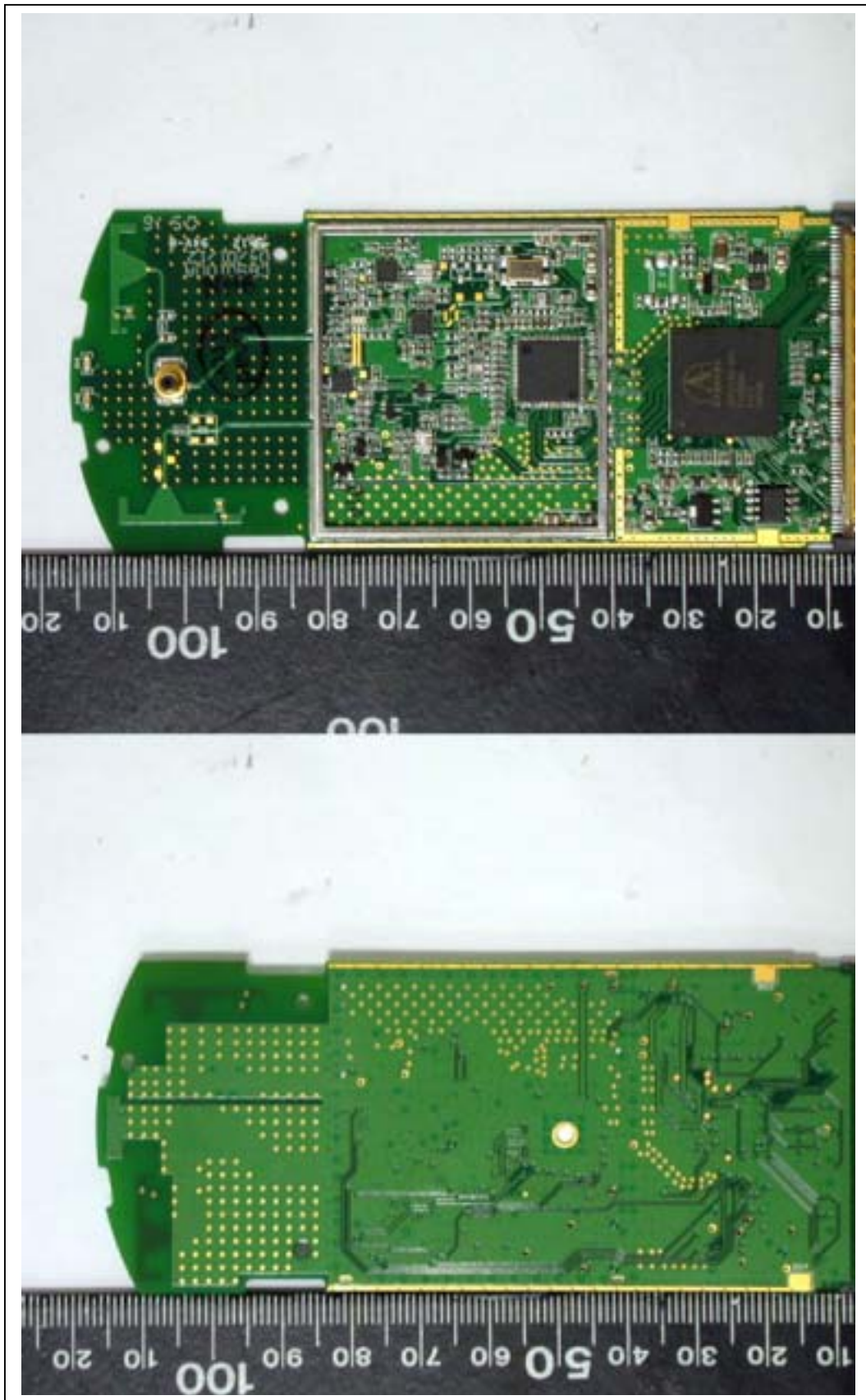


14. EUT Photograph









15. Appendix:Probe and Validation Dipole calibration

15.1 Probe: Refer to Probe_Cal.Pdf attached.

15.2 Dipole: Refer to Dipole_Cal.pdf attached.