

12.1 802.11a (5150MHz ~5350MHz, Normal Mode), Right Antenna

12.1.1 5180 MHz, EUT Position: Bottom

Measurement Data

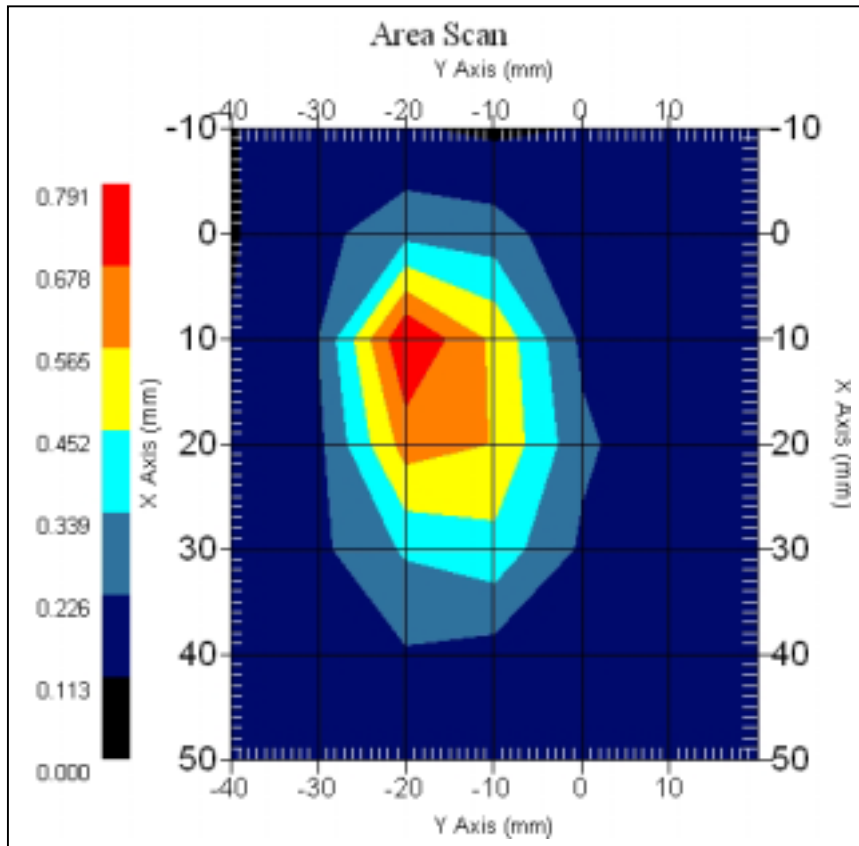
802.11a 5180 MHz, Normal Mode, Right Antenna

DUT Position : Bottom
Channel : Low - 1
Crest Factor : 1
Tissue Temp. : 21.90 °C
Ambient Temp. : 22.80 °C
Area Scan : 7x7x1 : Measurement x=10mm, y=10mm, z=4mm
Zoom Scan : 9x9x13 : Measurement x=4mm, y=4mm, z=2.5mm

Power Drift-Start : 0.275 W/kg

Power Drift-Finish: 0.269 W/kg

Power Drift (%) : -2.182



1 gram SAR value : 0.752 W/kg

10 gram SAR value : 0.319 W/kg

Area Scan Peak SAR : 0.788 W/kg

Zoom Scan Peak SAR : 2.051 W/kg

12.1.2 5240 MHz, EUT Position: Bottom

Measurement Data

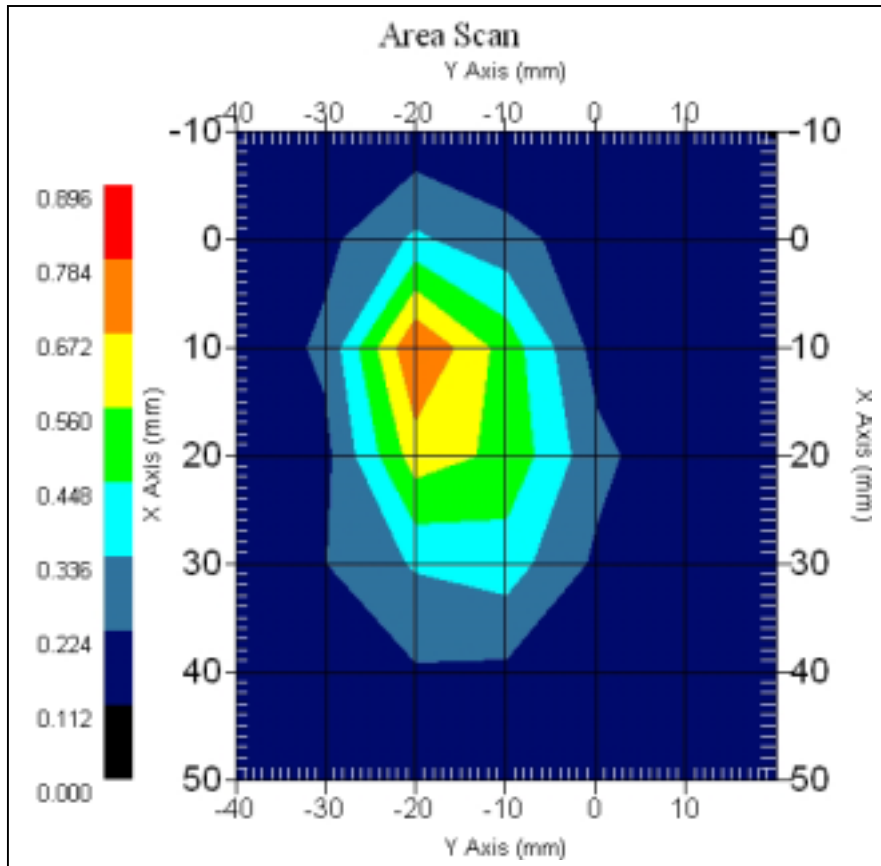
802.11a 5240MHz Normal Mode, Right Antenna

DUT Position : Bottom
Channel : High - 4
Crest Factor : 1
Tissue Temp. : 21.90 °C
Ambient Temp. : 22.80 °C
Area Scan : 7x7x1 : Measurement x=10mm, y=10mm, z=4mm
Zoom Scan : 9x9x13 : Measurement x=4mm, y=4mm, z=2.5mm

Power Drift-Start : 0.182 W/kg

Power Drift-Finish: 0.180 W/kg

Power Drift (%) : -1.159



1 gram SAR value : 0.715 W/kg

10 gram SAR value : 0.319 W/kg

Area Scan Peak SAR : 0.787 W/kg

Zoom Scan Peak SAR : 1.841 W/kg

12.1.3 5260 MHz, EUT Position: Bottom

Measurement Data

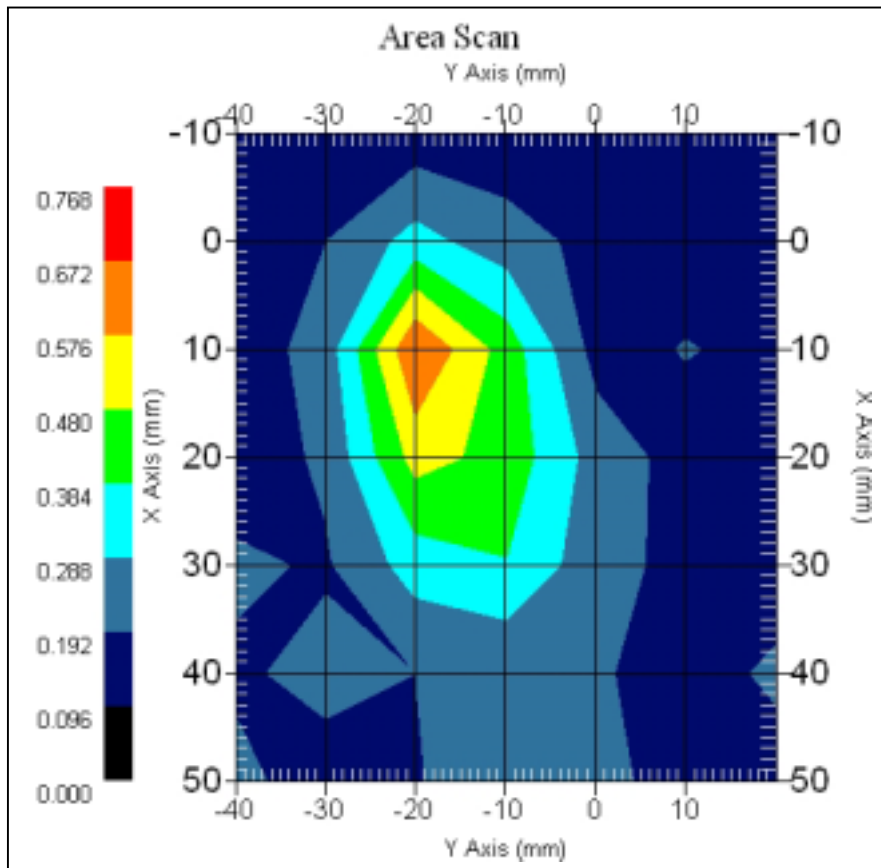
802.11a 5260 MHz, Normal Mode, Right Antenna

DUT Position : Bottom
Channel : Low - 5
Crest Factor : 1
Tissue Temp. : 21.90 °C
Ambient Temp. : 22.80 °C
Area Scan : 7x7x1 : Measurement x=10mm, y=10mm, z=4mm
Zoom Scan : 9x9x13 : Measurement x=4mm, y=4mm, z=2.5mm

Power Drift-Start : 0.206 W/kg

Power Drift-Finish: 0.201 W/kg

Power Drift (%) : -2.427



1 gram SAR value : 0.661 W/kg

10 gram SAR value : 0.294 W/kg

Area Scan Peak SAR : 0.673 W/kg

Zoom Scan Peak SAR : 1.601 W/kg

12.1.4 5320 MHz, EUT Position: Bottom

Measurement Data

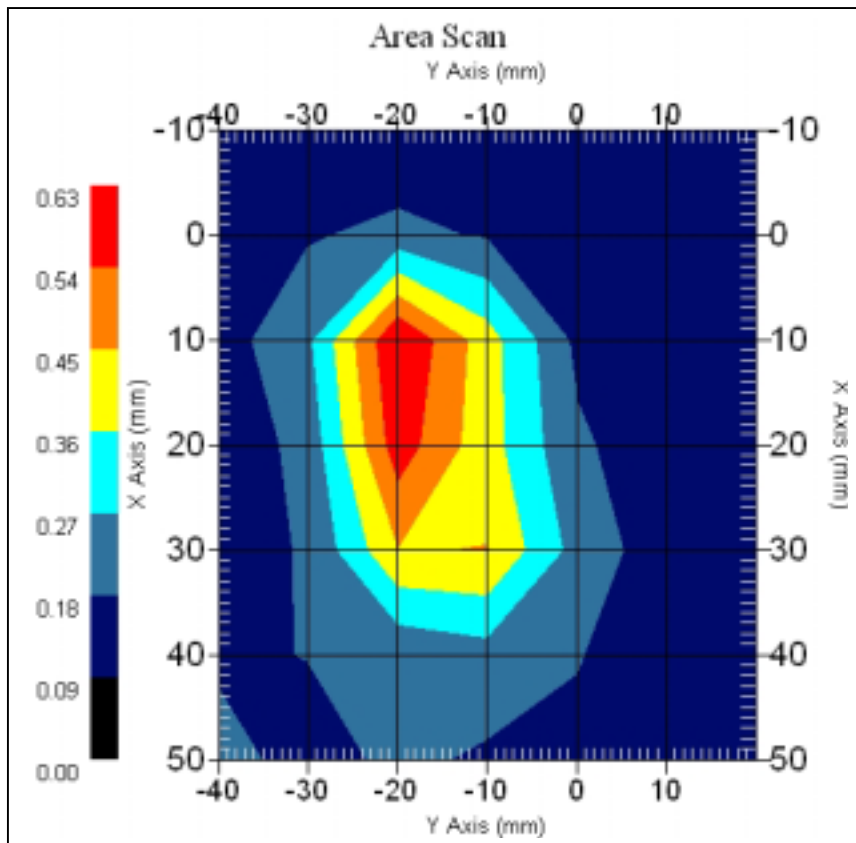
802.11a 5320MHz Normal Mode, Right Antenna

DUT Position : Bottom
Channel : High - 8
Crest Factor : 1
Tissue Temp. : 21.90 °C
Ambient Temp. : 22.80 °C
Area Scan : 7x7x1 : Measurement x=10mm, y=10mm, z=4mm
Zoom Scan : 9x9x13 : Measurement x=4mm, y=4mm, z=2.5mm

Power Drift-Start : 0.150 W/kg

Power Drift-Finish: 0.154 W/kg

Power Drift (%) : 2.666



1 gram SAR value : 0.670 W/kg

10 gram SAR value : 0.284 W/kg

Area Scan Peak SAR : 0.627 W/kg

Zoom Scan Peak SAR : 1.731 W/kg

12.1.5 5260 MHz, EUT Position: Top

Measurement Data

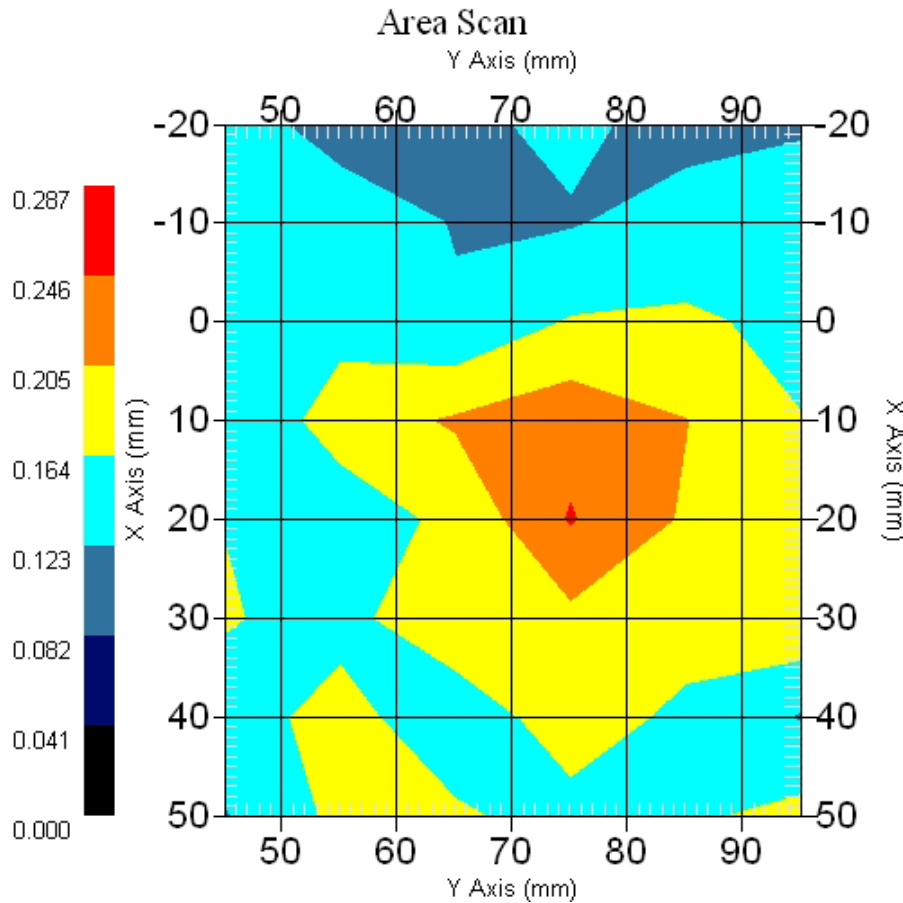
802.11a 5260 MHz, Normal Mode, Right Antenna

DUT Position : Top
Channel : Low - 5
Crest Factor : 1
Tissue Temp. : 21.90 °C
Ambient Temp. : 22.80 °C
Area Scan : 8x6x1 : Measurement x=10mm, y=10mm, z=4mm
Zoom Scan : 5x5x8 : Measurement x=8mm, y=8mm, z=4mm

Power Drift-Start : 0.127 W/kg

Power Drift-Finish: 0.123 W/kg

Power Drift (%) : -3.174



1 gram SAR value : 0.228 W/kg

10 gram SAR value : 0.170 W/kg

Area Scan Peak SAR : 0.249 W/kg

Zoom Scan Peak SAR : 0.410 W/kg

12.1.6 5260 MHz, EUT Position: Front

Measurement Data

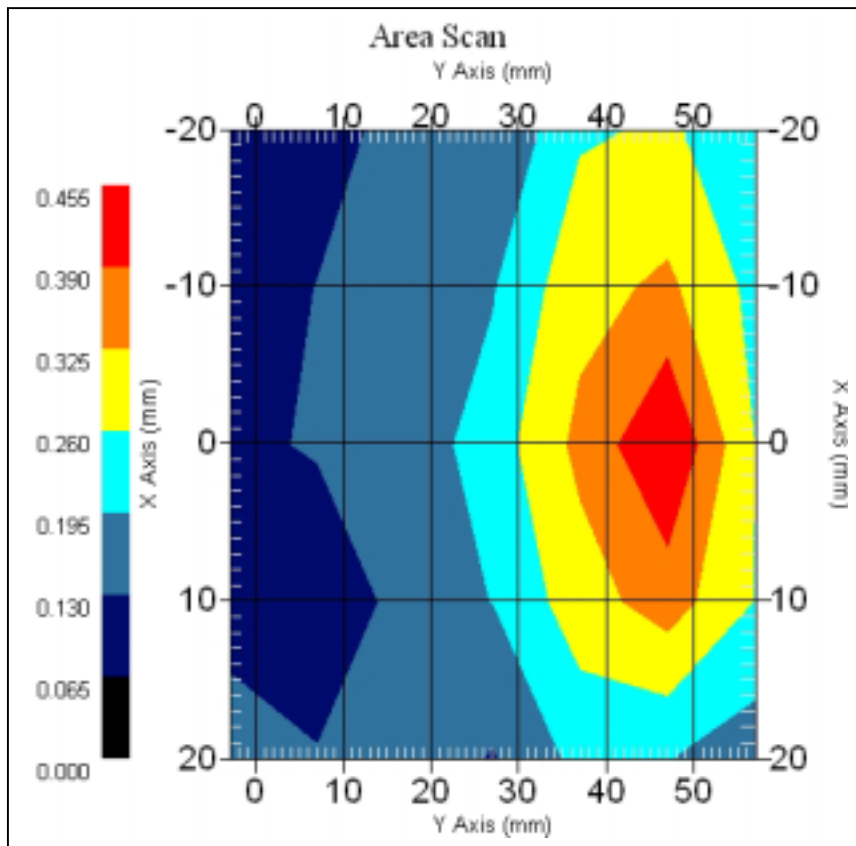
802.11a 5260 MHz, Normal Mode, Right Antenna

DUT Position : Front
Channel : Low - 5
Crest Factor : 1
Tissue Temp. : 21.90 °C
Ambient Temp. : 22.80 °C
Area Scan : 5x7x1 : Measurement x=10mm, y=10mm, z=4mm
Zoom Scan : 5x5x8 : Measurement x=8mm, y=8mm, z=4mm

Power Drift-Start : 0.153 W/kg

Power Drift-Finish: 0.157 W/kg

Power Drift (%) : 2.614



1 gram SAR value : 0.463 W/kg

10 gram SAR value : 0.250 W/kg

Area Scan Peak SAR : 0.454 W/kg

Zoom Scan Peak SAR : 1.120 W/kg

12.2 802.11a (5150MHz ~5350MHz, Normal Mode), Left Antenna

12.2.1 5180 MHz, EUT Position: Bottom

Measurement Data

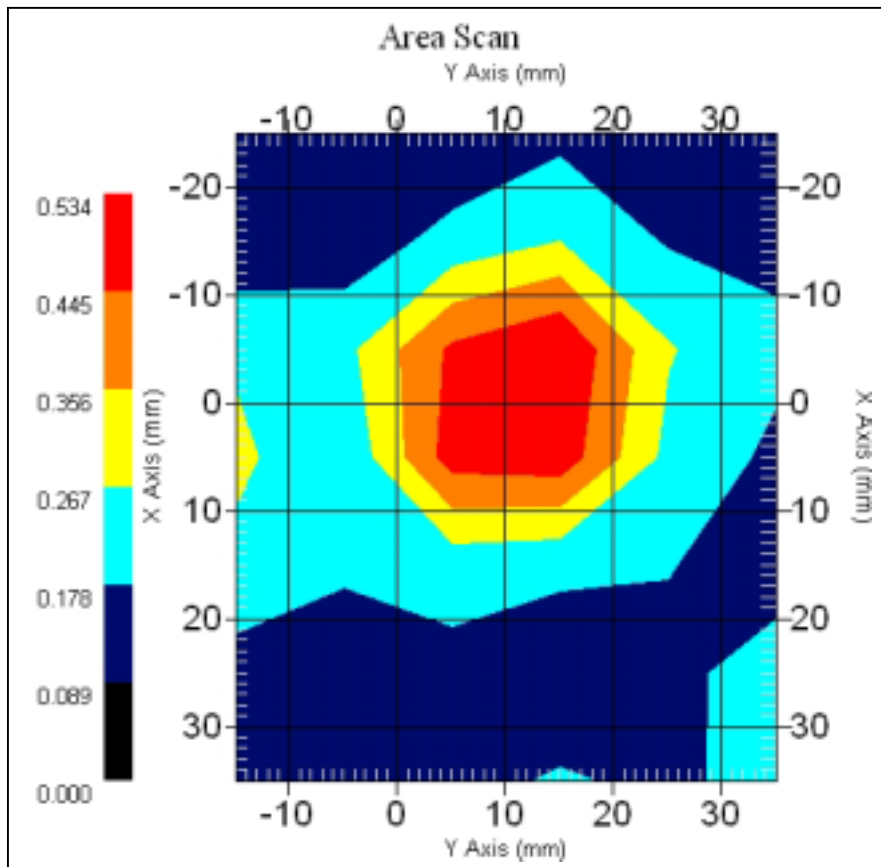
802.11a 5180 MHz, Normal Mode, Left Antenna

DUT Position : Bottom
Channel : Low - 1
Crest Factor : 1
Tissue Temp. : 21.90 °C
Ambient Temp. : 22.80 °C
Area Scan : 7x6x1 : Measurement x=10mm, y=10mm, z=4mm
Zoom Scan : 5x5x8 : Measurement x=8mm, y=8mm, z=4mm

Power Drift-Start : 0.311 W/kg

Power Drift-Finish: 0.321 W/kg

Power Drift (%) : 3.215



1 gram SAR value : 0.551 W/kg

10 gram SAR value : 0.285 W/kg

Area Scan Peak SAR : 0.533 W/kg

Zoom Scan Peak SAR : 1.301 W/kg

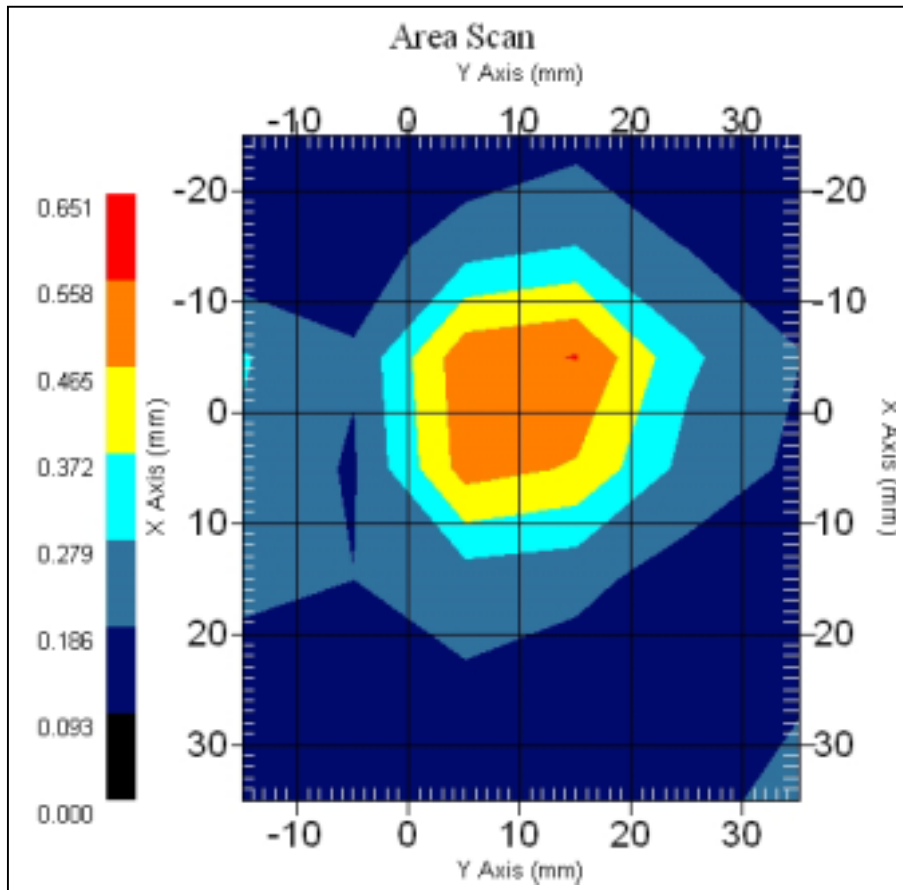
12.2.2 5240 MHz, EUT Position: Bottom

Measurement Data

802.11a 5240MHz Normal Mode, Left Antenna

DUT Position : Bottom
Channel : High - 4
Crest Factor : 1
Tissue Temp. : 21.90 °C
Ambient Temp. : 22.80 °C
Area Scan : 7x6x1 : Measurement x=10mm, y=10mm, z=4mm
Zoom Scan : 5x5x8 : Measurement x=8mm, y=8mm, z=4mm

Power Drift-Start : 0.381 W/kg
Power Drift-Finish: 0.364 W/kg
Power Drift (%) : -4.660



1 gram SAR value : 0.603 W/kg
10 gram SAR value : 0.298 W/kg
Area Scan Peak SAR : 0.561 W/kg
Zoom Scan Peak SAR : 1.501 W/kg

12.2.3 5260 MHz, EUT Position: Bottom

Measurement Data

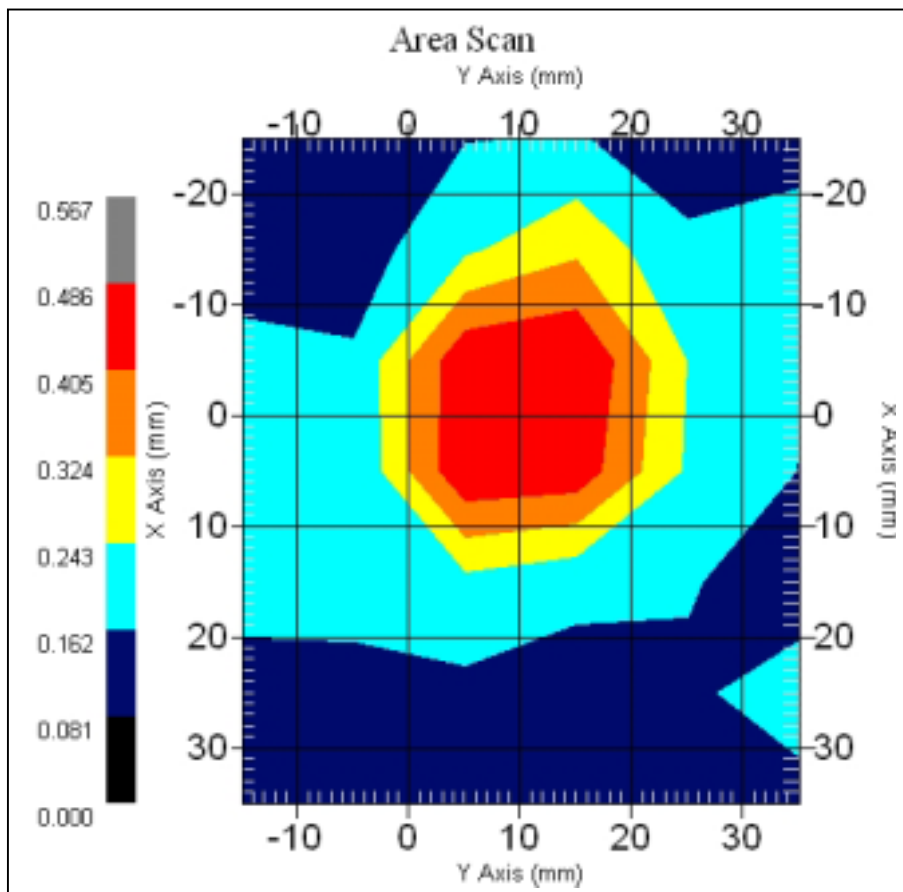
802.11a 5260 MHz, Normal Mode, Left Antenna

DUT Position : Bottom
Channel : Low - 5
Crest Factor : 1
Tissue Temp. : 21.90 °C
Ambient Temp. : 22.80 °C
Area Scan : 7x6x1 : Measurement x=10mm, y=10mm, z=4mm
Zoom Scan : 5x5x8 : Measurement x=8mm, y=8mm, z=4mm

Power Drift-Start : 0.356 W/kg

Power Drift-Finish: 0.353 W/kg

Power Drift (%) : -0.827



1 gram SAR value : 0.504 W/kg

10 gram SAR value : 0.264 W/kg

Area Scan Peak SAR : 0.486 W/kg

Zoom Scan Peak SAR : 1.180 W/kg

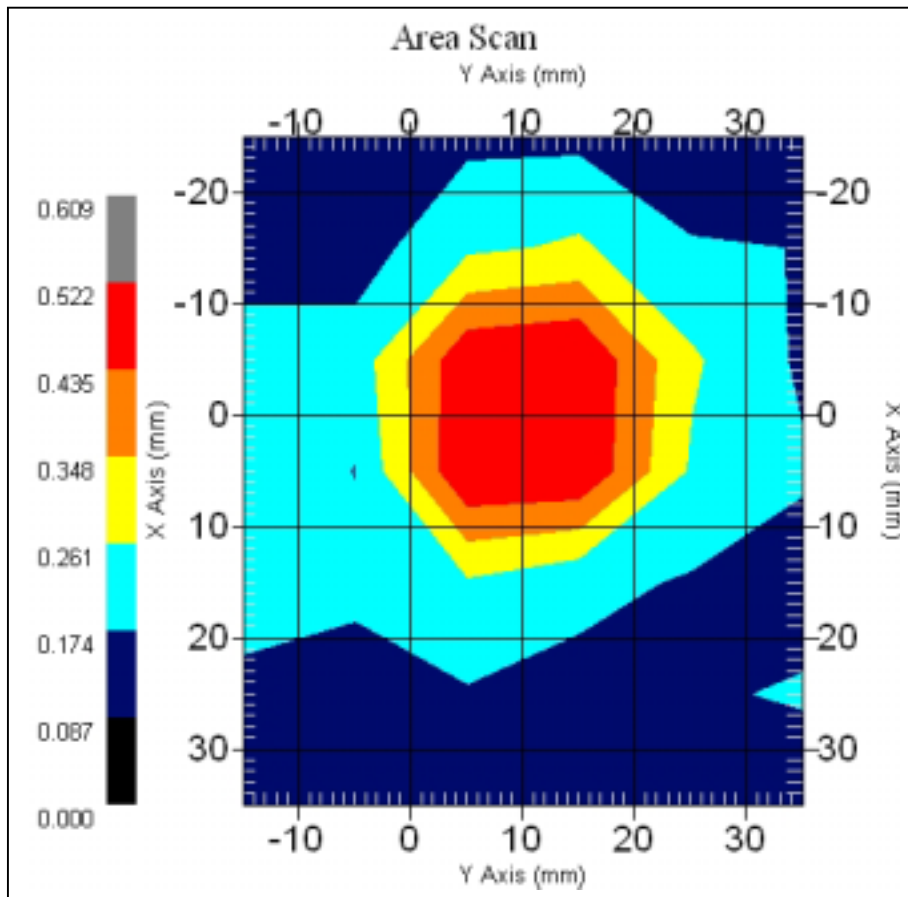
12.2.4 5320 MHz, EUT Position: Bottom

Measurement Data

802.11a 5320MHz Normal Mode, Left Antenna

DUT Position : Bottom
Channel : High – 8
Crest Factor : 1
Tissue Temp. : 21.90 °C
Ambient Temp. : 22.80 °C
Area Scan : 7x6x1 : Measurement x=10mm, y=10mm, z=4mm
Zoom Scan : 5x5x8 : Measurement x=8mm, y=8mm, z=4mm

Power Drift-Start : 0.404 W/kg
Power Drift-Finish: 0.413 W/kg
Power Drift (%) : 2.723



1 gram SAR value : 0.523 W/kg
10 gram SAR value : 0.237 W/kg
Area Scan Peak SAR : 0.522 W/kg
Zoom Scan Peak SAR : 1.271 W/kg

12.2.5 5260 MHz, EUT Position: Top

Measurement Data

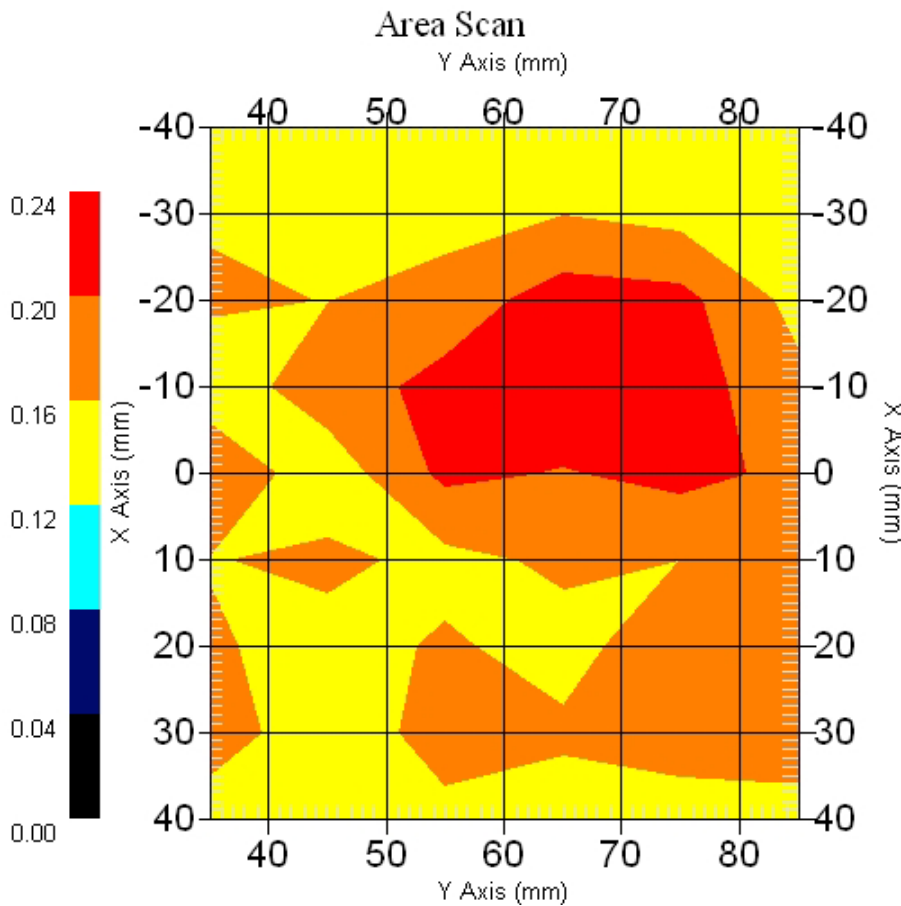
802.11a 5260 MHz, Normal Mode, Left Antenna

DUT Position : Top
Channel : Low - 5
Crest Factor : 1
Tissue Temp. : 21.90 °C
Ambient Temp. : 22.80 °C
Area Scan : 9x6x1 : Measurement x=10mm, y=10mm, z=4mm
Zoom Scan : 5x5x8 : Measurement x=8mm, y=8mm, z=4mm

Power Drift-Start : 0.162 W/kg

Power Drift-Finish: 0.166 W/kg

Power Drift (%) : 2.062



1 gram SAR value : 0.225 W/kg

10 gram SAR value : 0.171 W/kg

Area Scan Peak SAR : 0.237 W/kg

Zoom Scan Peak SAR : 0.390 W/kg

12.2.6 5260 MHz, EUT Position: Front

Measurement Data

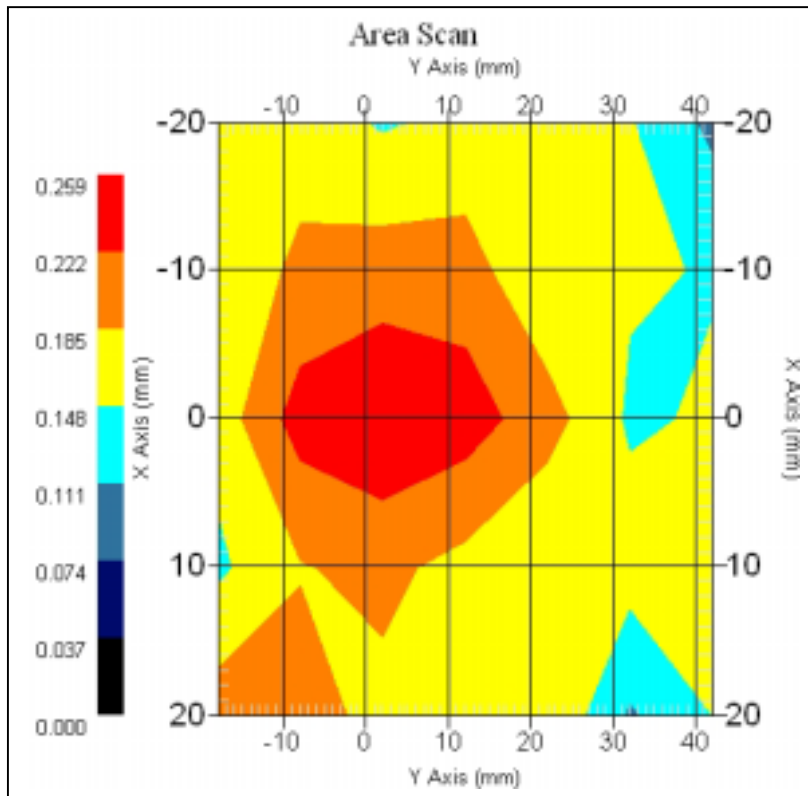
802.11a 5260 MHz, Normal Mode, Left Antenna

DUT Position : Front
Channel : Low - 5
Crest Factor : 1
Tissue Temp. : 21.90 °C
Ambient Temp. : 22.80 °C
Area Scan : 5x7x1 : Measurement x=10mm, y=10mm, z=4mm
Zoom Scan : 5x5x8 : Measurement x=8mm, y=8mm, z=4mm

Power Drift-Start : 0.165 W/kg

Power Drift-Finish: 0.162 W/kg

Power Drift (%) : -2.424



1 gram SAR value : 0.241 W/kg

10 gram SAR value : 0.156 W/kg

Area Scan Peak SAR : 0.256 W/kg

Zoom Scan Peak SAR : 0.423 W/kg

12.3 802.11a (5150MHz ~5350MHz, Turbo Mode), Right Antenna

12.3.1 5210 MHz, EUT Position: Bottom

Measurement Data

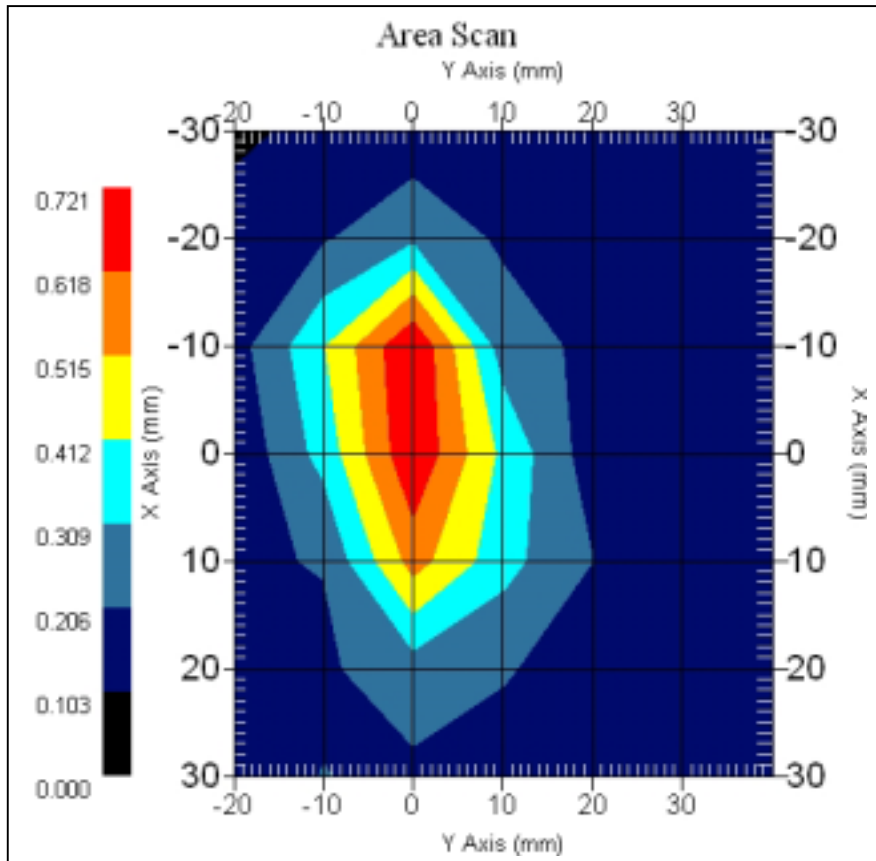
802.11a 5210 MHz, Turbo Mode, Right Antenna

DUT Position : Bottom
Channel : Low - 1
Crest Factor : 1
Tissue Temp. : 21.90 °C
Ambient Temp. : 22.80 °C
Area Scan : 7x7x1 : Measurement x=10mm, y=10mm, z=4mm
Zoom Scan : 9x9x13 : Measurement x=4mm, y=4mm, z=2.5mm

Power Drift-Start : 0.245 W/kg

Power Drift-Finish: 0.251 W/kg

Power Drift (%) : 2.449



1 gram SAR value : 0.735 W/kg

10 gram SAR value : 0.326 W/kg

Area Scan Peak SAR : 0.719 W/kg

Zoom Scan Peak SAR : 1.821 W/kg

12.3.2 5250 MHz, EUT Position: Bottom

Measurement Data

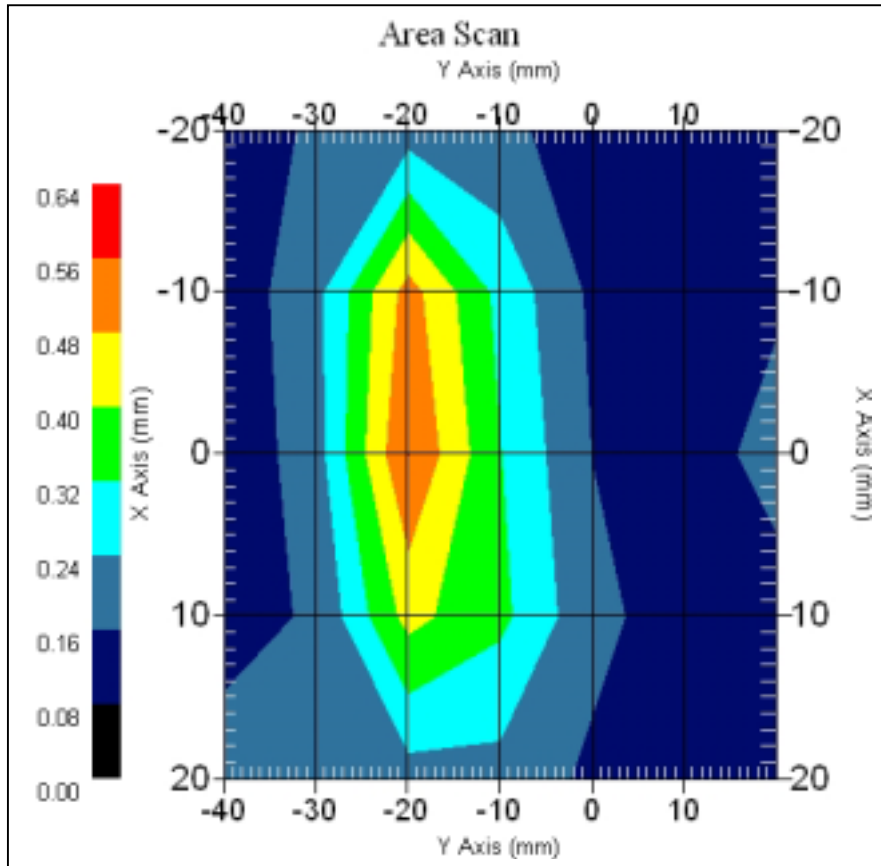
802.11a 5250MHz Turbo Mode, Right Antenna

DUT Position : Bottom
Channel : Mid - 2
Crest Factor : 1
Tissue Temp. : 21.90 °C
Ambient Temp. : 22.80 °C
Area Scan : 5x7x1 : Measurement x=10mm, y=10mm, z=4mm
Zoom Scan : 5x5x8 : Measurement x=8mm, y=8mm, z=4mm

Power Drift-Start : 0.183 W/kg

Power Drift-Finish: 0.187 W/kg

Power Drift (%) : 2.186



1 gram SAR value : 0.484 W/kg

10 gram SAR value : 0.233 W/kg

Area Scan Peak SAR : 0.560 W/kg

Zoom Scan Peak SAR : 1.251 W/kg

12.3.3 5290 MHz, EUT Position: Bottom

Measurement Data

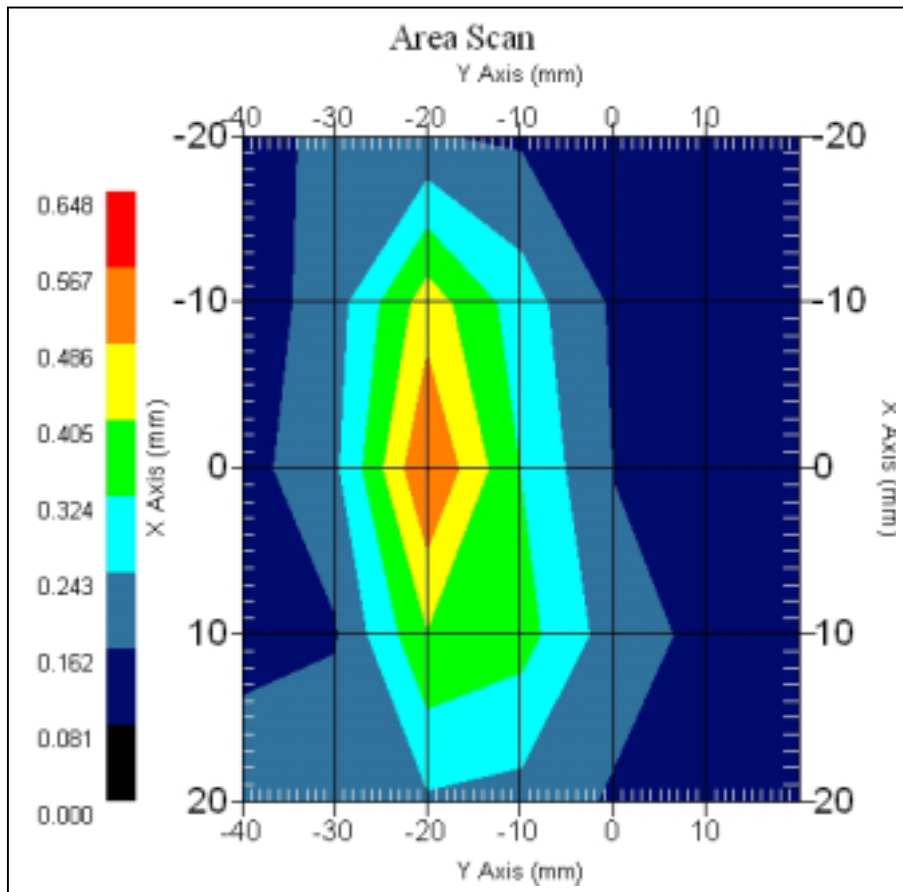
802.11a 5290 MHz, Turbo Mode, Right Antenna

DUT Position : Bottom
Channel : High - 3
Crest Factor : 1
Tissue Temp. : 21.90 °C
Ambient Temp. : 22.80 °C
Area Scan : 5x7x1 : Measurement x=10mm, y=10mm, z=4mm
Zoom Scan : 5x5x8 : Measurement x=8mm, y=8mm, z=4mm

Power Drift-Start : 0.154 W/kg

Power Drift-Finish: 0.148 W/kg

Power Drift (%) : 3.896



1 gram SAR value : 0.506 W/kg

10 gram SAR value : 0.240 W/kg

Area Scan Peak SAR : 0.569 W/kg

Zoom Scan Peak SAR : 1.271 W/kg

12.3.4 5250 MHz, EUT Position: Top

Measurement Data

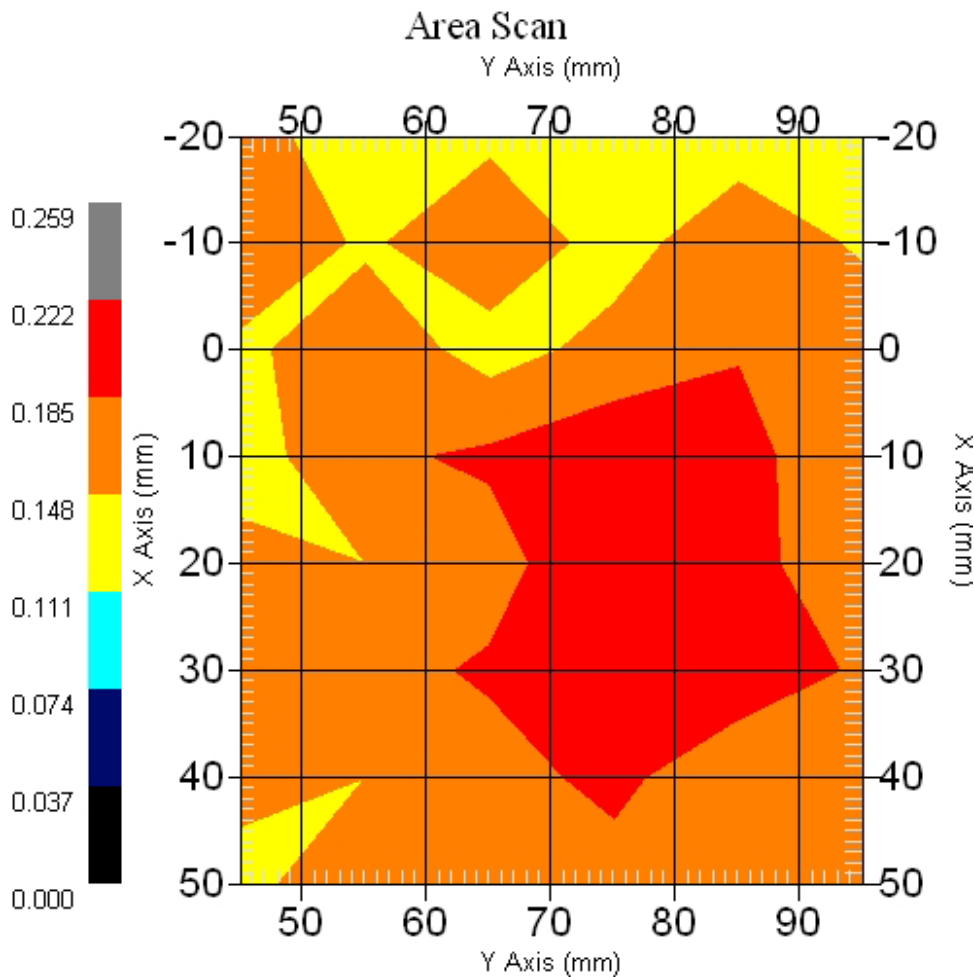
802.11a 5260 MHz, Turbo Mode, Right Antenna

DUT Position : Top
Channel : Mid - 2
Crest Factor : 1
Tissue Temp. : 21.90 °C
Ambient Temp. : 22.80 °C
Area Scan : 8x6x1 : Measurement x=10mm, y=10mm, z=4mm
Zoom Scan : 5x5x8 : Measurement x=8mm, y=8mm, z=4mm

Power Drift-Start : 0.143 W/kg

Power Drift-Finish: 0.144 W/kg

Power Drift (%) : 0.542



1 gram SAR value : 0.220 W/kg

10 gram SAR value : 0.165 W/kg

Area Scan Peak SAR : 0.222 W/kg

Zoom Scan Peak SAR : 0.370 W/kg

12.3.5 5250 MHz, EUT Position: Front

Measurement Data

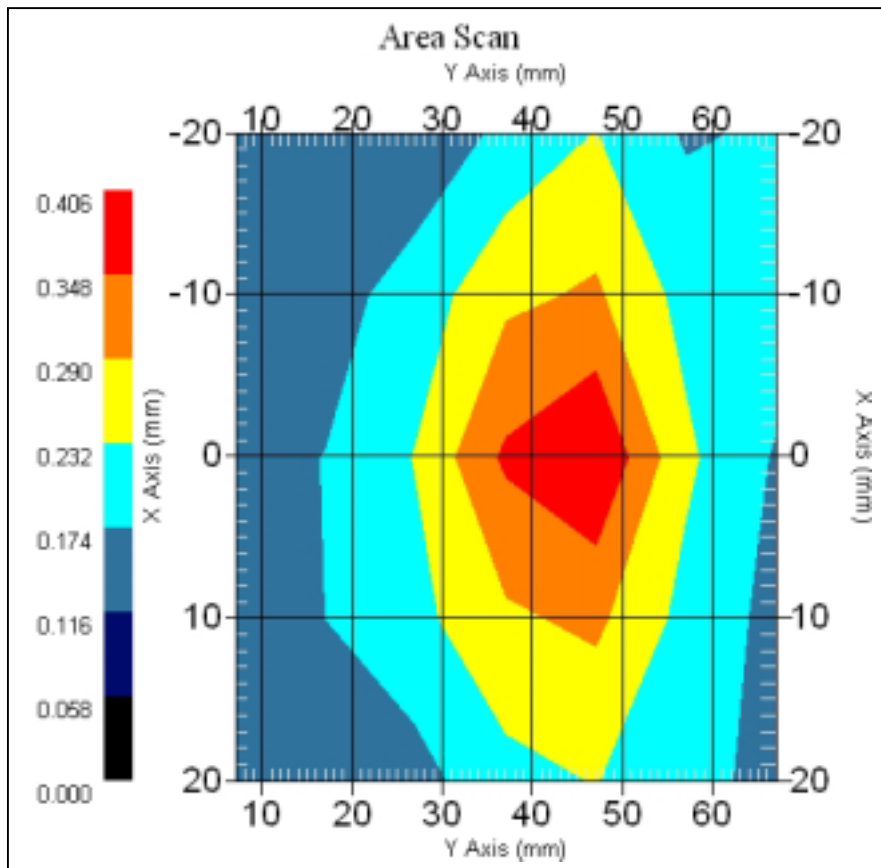
802.11a 5260 MHz, Turbo Mode, Right Antenna

DUT Position : Front
Channel : Mid - 2
Crest Factor : 1
Tissue Temp. : 21.90 °C
Ambient Temp. : 22.80 °C
Area Scan : 5x7x1 : Measurement x=10mm, y=10mm, z=4mm
Zoom Scan : 5x5x8 : Measurement x=8mm, y=8mm, z=4mm

Power Drift-Start : 0.148 W/kg

Power Drift-Finish: 0.144 W/kg

Power Drift (%) : -2.439



1 gram SAR value : 0.402 W/kg

10 gram SAR value : 0.238 W/kg

Area Scan Peak SAR : 0.404 W/kg

Zoom Scan Peak SAR : 0.840 W/kg

12.4 802.11a (5150MHz ~5350MHz, Turbo Mode), Left Antenna

12.4.1 5210 MHz, EUT Position: Bottom

Measurement Data

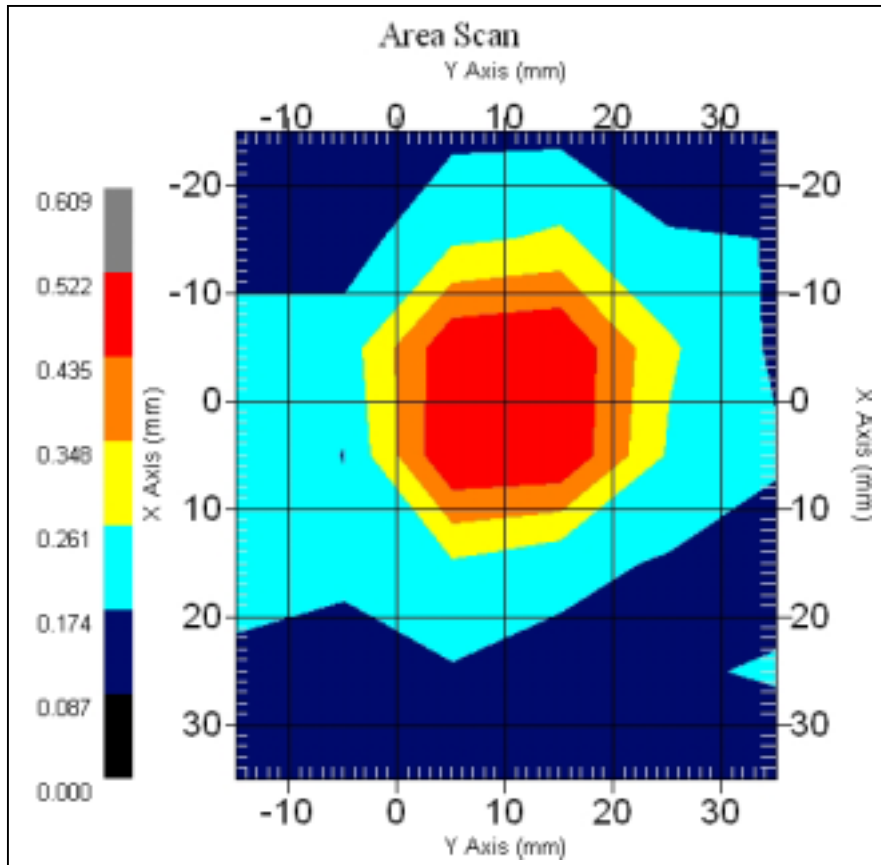
802.11a 5210 MHz, Turbo Mode, Left Antenna

DUT Position : Bottom
Channel : Low - 1
Crest Factor : 1
Tissue Temp. : 21.90 °C
Ambient Temp. : 22.80 °C
Area Scan : 7x6x1 : Measurement x=10mm, y=10mm, z=4mm
Zoom Scan : 5x5x8 : Measurement x=8mm, y=8mm, z=4mm

Power Drift-Start : 0.315 W/kg

Power Drift-Finish: 0.303 W/kg

Power Drift (%) : 3.810



1 gram SAR value : 0.534 W/kg

10 gram SAR value : 0.278 W/kg

Area Scan Peak SAR : 0.528 W/kg

Zoom Scan Peak SAR : 1.291 W/kg

12.4.2 5250 MHz, EUT Position: Bottom

Measurement Data

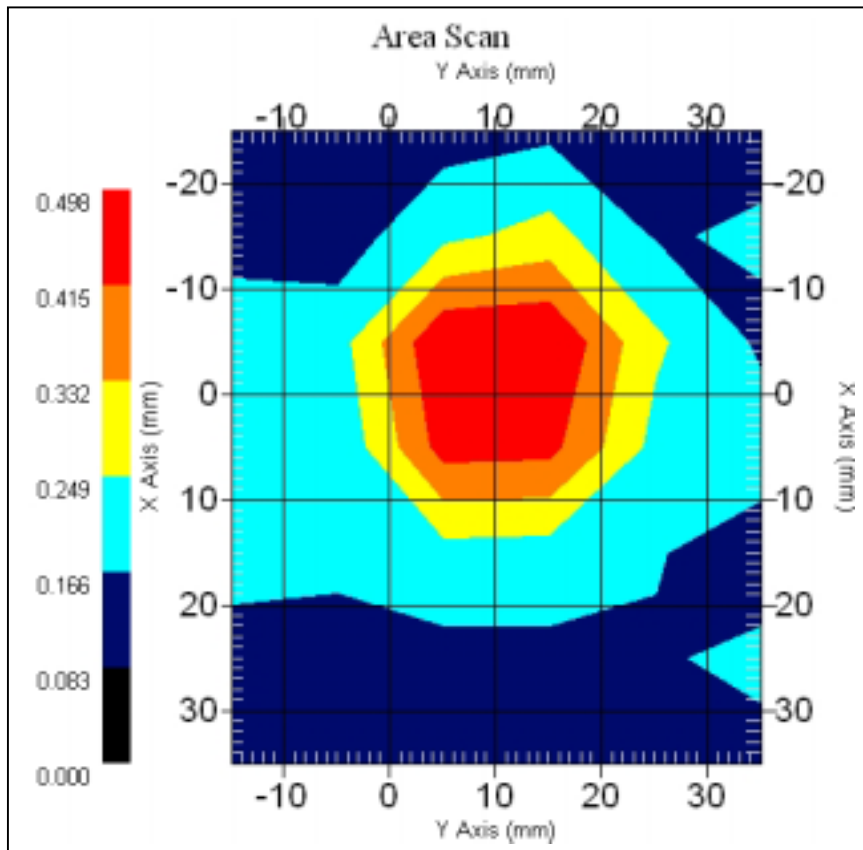
802.11a 5250MHz Turbo Mode, Left Antenna

DUT Position : Bottom
Channel : Mid - 2
Crest Factor : 1
Tissue Temp. : 21.90 °C
Ambient Temp. : 22.80 °C
Area Scan : 7x6x1 : Measurement x=10mm, y=10mm, z=4mm
Zoom Scan : 5x5x8 : Measurement x=8mm, y=8mm, z=4mm

Power Drift-Start : 0.342 W/kg

Power Drift-Finish: 0.327 W/kg

Power Drift (%) : -4.386



1 gram SAR value : 0.513 W/kg

10 gram SAR value : 0.269 W/kg

Area Scan Peak SAR : 0.495 W/kg

Zoom Scan Peak SAR : 1.208 W/kg

12.4.3 5290 MHz, EUT Position: Bottom

Measurement Data

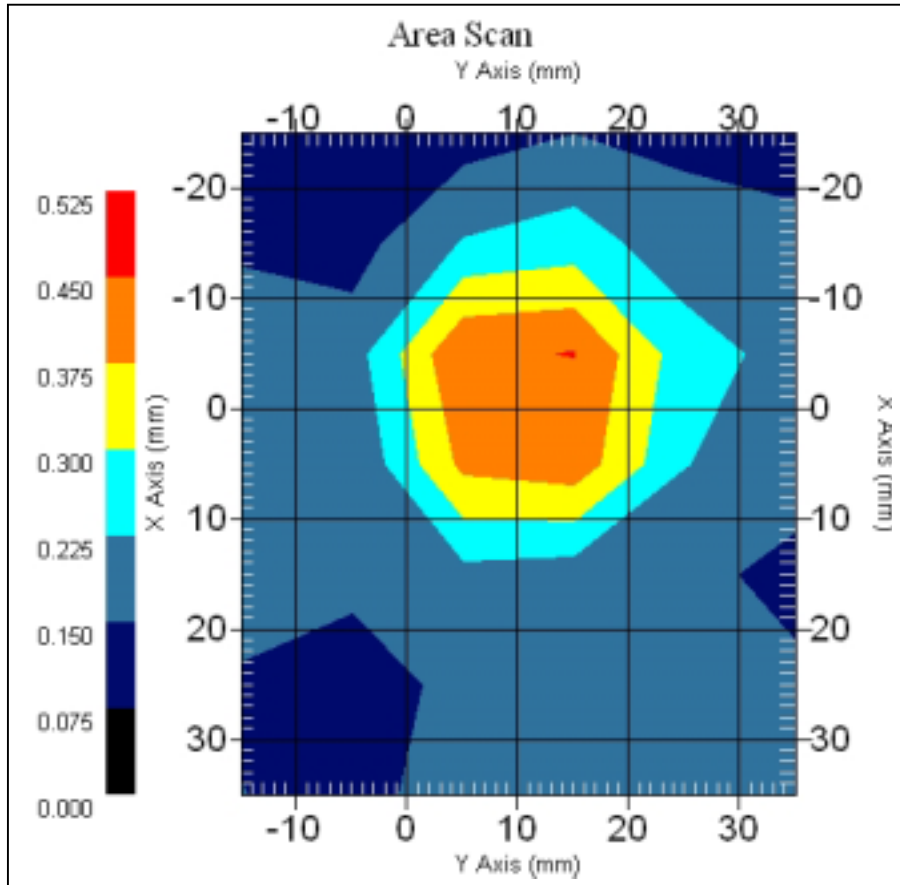
802.11a 5290 MHz, Turbo Mode, Left Antenna

DUT Position : Bottom
Channel : High - 3
Crest Factor : 1
Tissue Temp. : 21.90 °C
Ambient Temp. : 22.80 °C
Area Scan : 7x6x1 : Measurement x=10mm, y=10mm, z=4mm
Zoom Scan : 5x5x8 : Measurement x=8mm, y=8mm, z=4mm

Power Drift-Start : 0.299 W/kg

Power Drift-Finish: 0.305 W/kg

Power Drift (%) : 2.074



1 gram SAR value : 0.452 W/kg

10 gram SAR value : 0.245 W/kg

Area Scan Peak SAR : 0.451 W/kg

Zoom Scan Peak SAR : 1.130 W/kg

12.4.4 5250 MHz, EUT Position: Top

Measurement Data

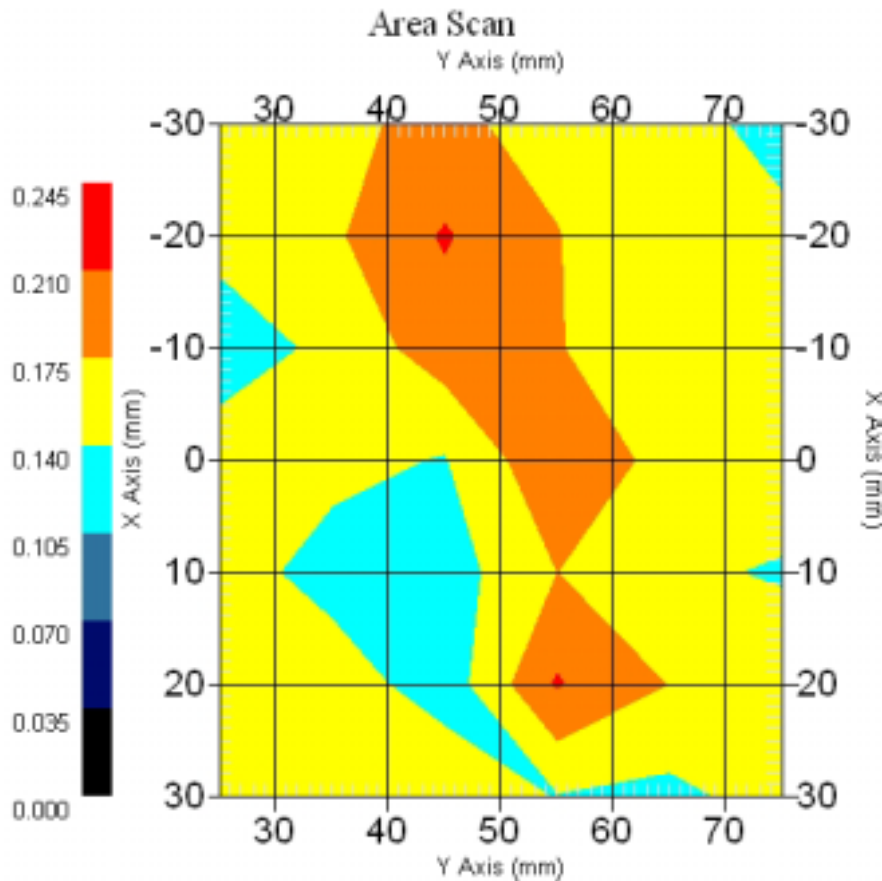
802.11a 5250 MHz, Turbo Mode, Left Antenna

DUT Position : Top
Channel : Mid - 2
Crest Factor : 1
Tissue Temp. : 21.90 °C
Ambient Temp. : 22.80 °C
Area Scan : 7x6x1 : Measurement x=10mm, y=10mm, z=4mm
Zoom Scan : 5x5x8 : Measurement x=8mm, y=8mm, z=4mm

Power Drift-Start : 0.174 W/kg

Power Drift-Finish: 0.180 W/kg

Power Drift (%) : 3.448



1 gram SAR value : 0.240 W/kg

10 gram SAR value : 0.156 W/kg

Area Scan Peak SAR : 0.213 W/kg

Zoom Scan Peak SAR : 0.389 W/kg

12.4.5 5250 MHz, EUT Position: Front

Measurement Data

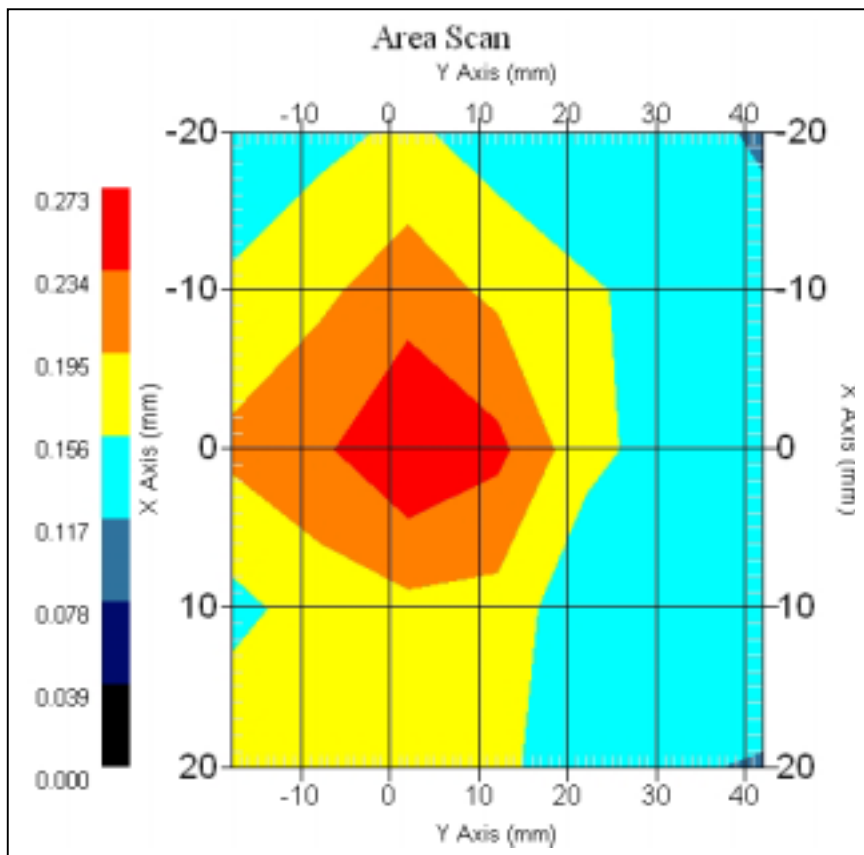
802.11a 5260 MHz, Turbo Mode, Left Antenna

DUT Position : Front
Channel : Mid - 2
Crest Factor : 1
Tissue Temp. : 21.90 °C
Ambient Temp. : 22.80 °C
Area Scan : 5x7x1 : Measurement x=10mm, y=10mm, z=4mm
Zoom Scan : 5x5x8 : Measurement x=8mm, y=8mm, z=4mm

Power Drift-Start : 0.308 W/kg

Power Drift-Finish: 0.297 W/kg

Power Drift (%) : -3.571



1 gram SAR value : 0.264 W/kg

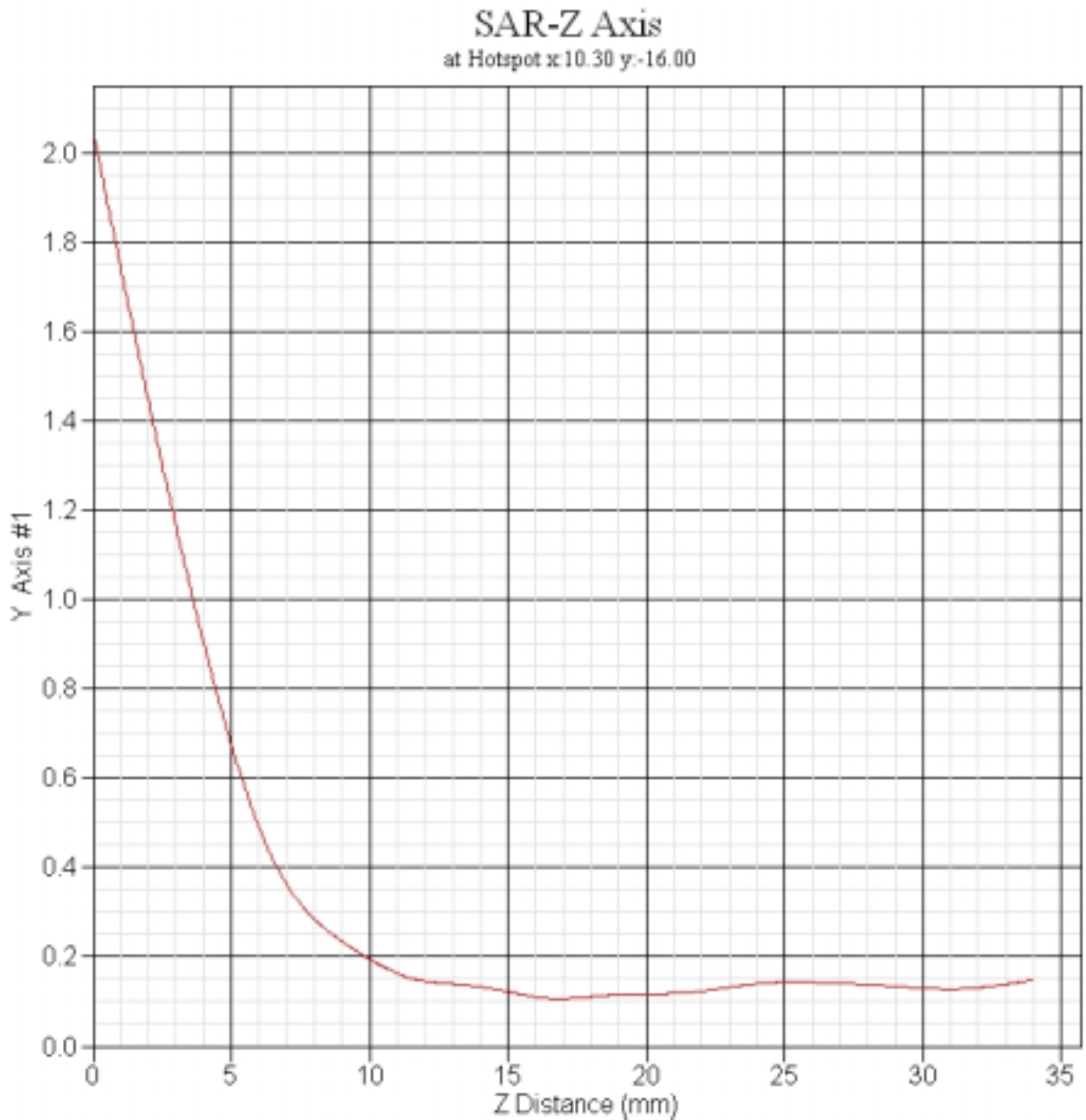
10 gram SAR value : 0.165 W/kg

Area Scan Peak SAR : 0.271 W/kg

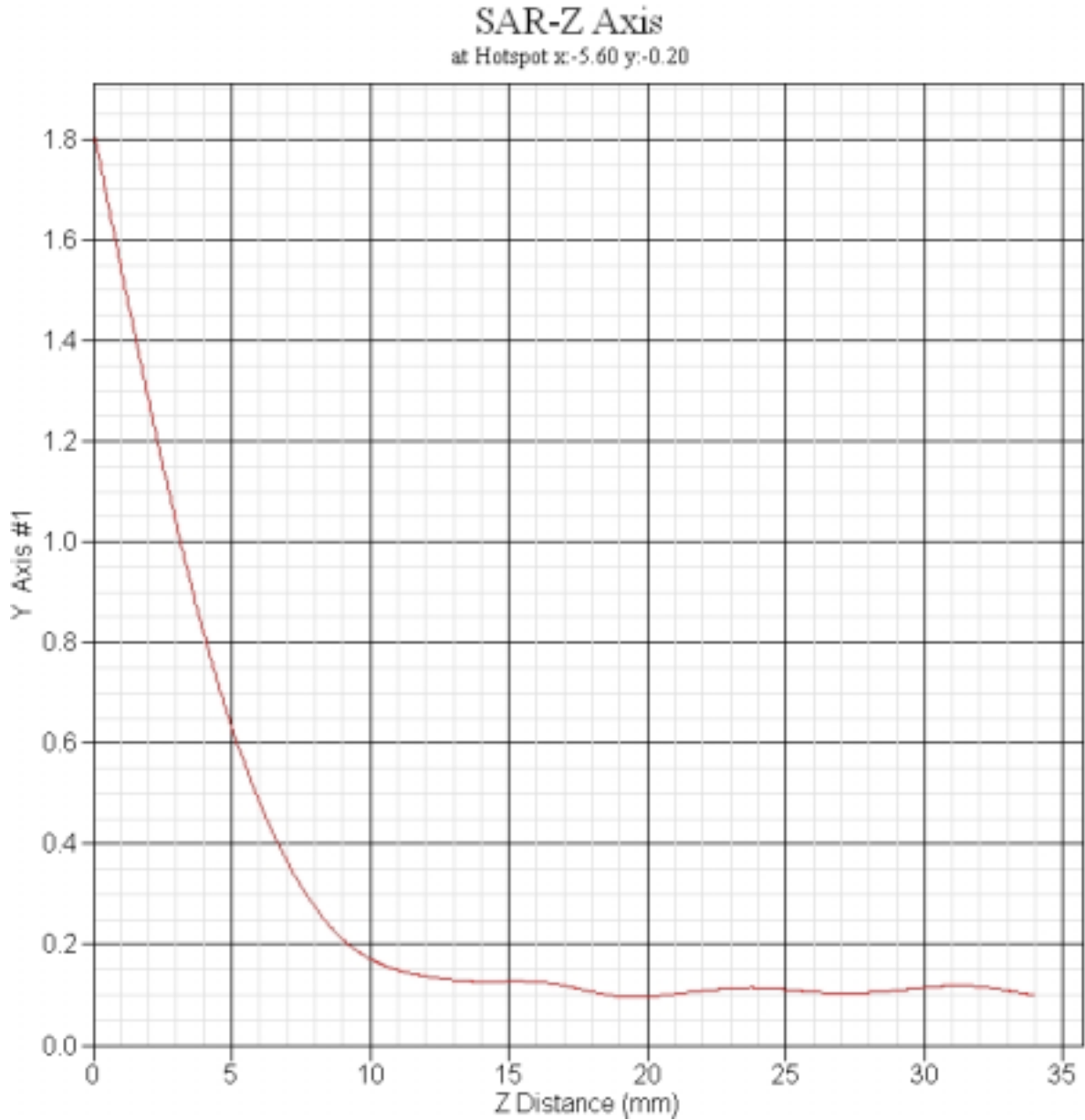
Zoom Scan Peak SAR : 0.350 W/kg

12.5 5200MHz Z-Axis plot

12.5.1 Frequency: 802.11a 5180MHz Normal Mode, EUT Bottom (Right Antenna)



12.5.2 Frequency: 802.11a 5210MHz Turbo Mode, EUT Bottom (Right Antenna)



13. 5800 MHz SAR measurement Data

ALSAS-10U Ver 2.2.0 SAR Test Report

Validation date : 2-Sep-2005
Measurement Date : 2-Sep-2005

Product Data

Device Name : PCMCIA CARDBUS
Model : CB9
Frequency : 5800 MHz
Drift Time : 0 min(s)
Length : 118 mm
Width : 54 mm
Depth : 8.8 mm
Antenna Type : Internal

Phantom Data

Name : APREL-Uni
Type : Uni-Phantom
Size (mm) : 280 x 280 x 200
Location : Center

Tissue Data

Type : BODY
Serial No. : 5800B081E
Frequency : 5800.00 MHz
Last Calib. Date : 2-Sep-2005
Temperature : 21.1 °C
Ambient Temp. : 21.90 °C
Humidity : 51.00 RH%
Epsilon : 50.27 F/m
Sigma : 6.261 S/m
Density : 1000.00 kg/cu. m

Probe Data

Name : E-field Probe
Model : ALS-E-020
Type : E-Field Triangle
Serial No. : 266
Last Calib. Date : 16-Mar-2005
Frequency : 5800.00 MHz
Duty Cycle Factor: 1
Conversion Factor: 4.2
Probe Sensitivity: 1.20 1.20 1.20 $\mu\text{V}/(\text{V}/\text{m})^2$
Compression Point: 95.00 mV
Offset : 1.56 mm

13.1 802.11a (5725MHz ~5825MHz, Normal Mode), Right Antenna

13.1.1 5745 MHz, EUT Position: Bottom

Measurement Data

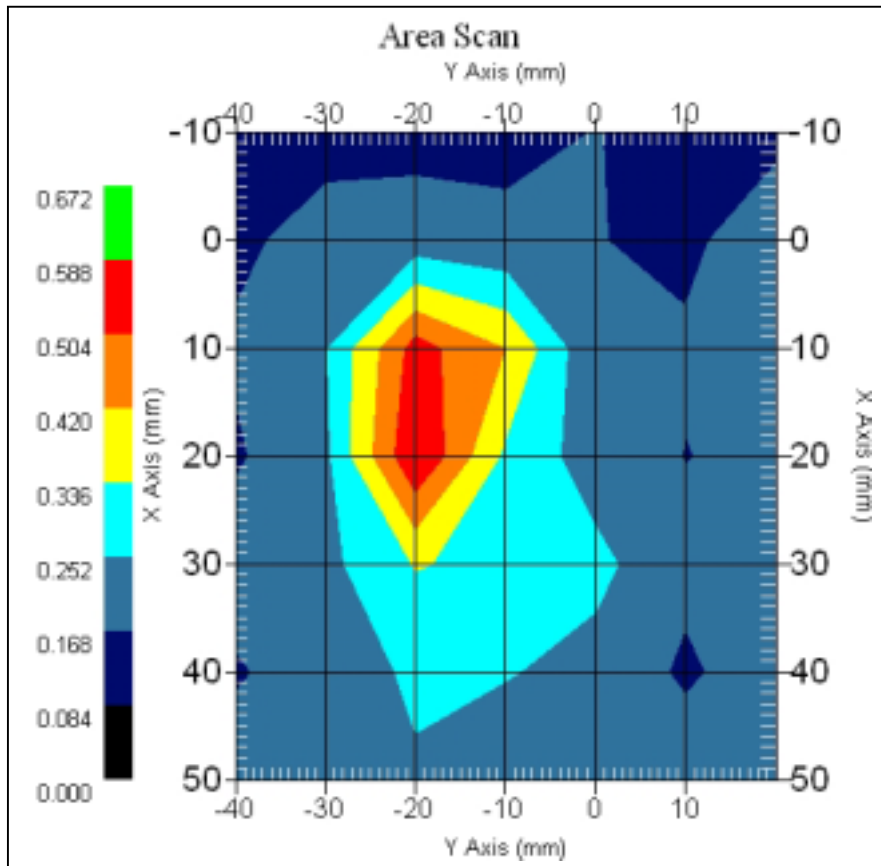
802.11a 5745 MHz, Normal Mode, Right Antenna

DUT Position : Bottom
Channel : Low - 9
Crest Factor : 1
Tissue Temp. : 21.1 °C
Ambient Temp. : 21.9 °C
Area Scan : 7x7x1 : Measurement x=10mm, y=10mm, z=4mm
Zoom Scan : 9x9x13 : Measurement x=4mm, y=4mm, z=2.5mm

Power Drift-Start : 0.190 W/kg

Power Drift-Finish: 0.191 W/kg

Power Drift (%) : 0.526



1 gram SAR value : 0.549 W/kg

10 gram SAR value : 0.266 W/kg

Area Scan Peak SAR : 0.588 W/kg

Zoom Scan Peak SAR : 1.381 W/kg

13.1.2 5765 MHz, EUT Position: Bottom

Measurement Data

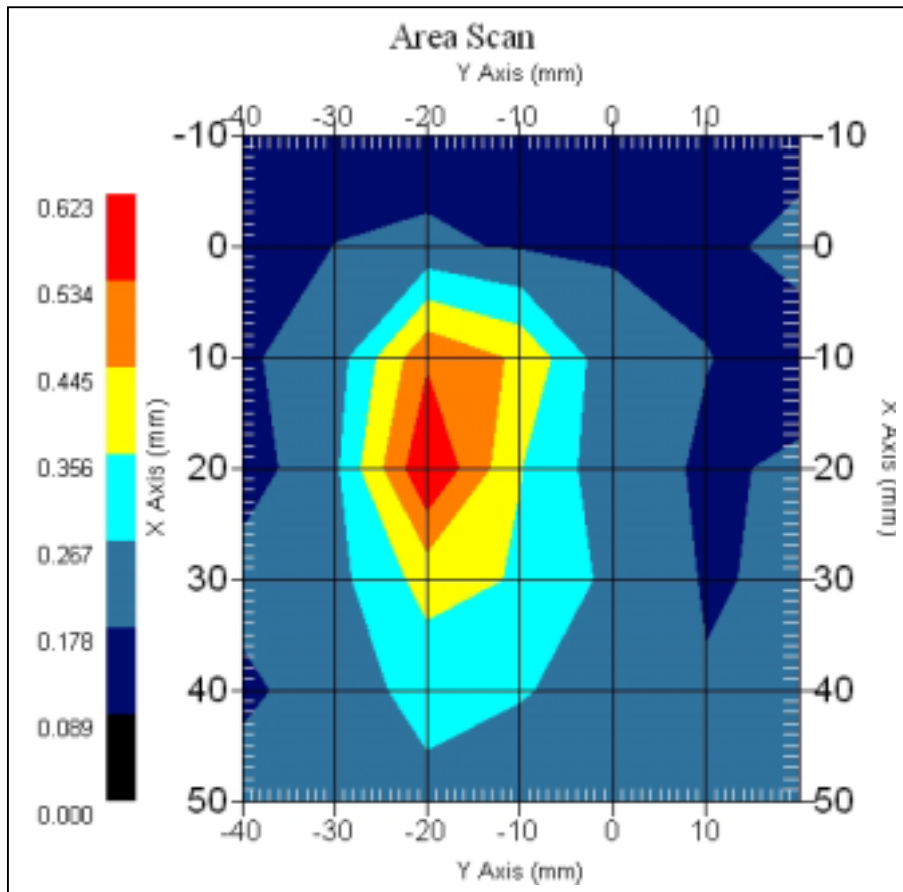
802.11a 5765 MHz Normal Mode, Right Antenna

DUT Position : Bottom
Channel : Mid - 10
Crest Factor : 1
Tissue Temp. : 21.10 °C
Ambient Temp. : 21.90 °C
Area Scan : 7x7x1 : Measurement x=10mm, y=10mm, z=4mm
Zoom Scan : 9x9x13 : Measurement x=4mm, y=4mm, z=2.5mm

Power Drift-Start : 0.178 W/kg

Power Drift-Finish: 0.180 W/kg

Power Drift (%) : 1.123



1 gram SAR value : 0.628 W/kg

10 gram SAR value : 0.301 W/kg

Area Scan Peak SAR : 0.621 W/kg

Zoom Scan Peak SAR : 1.491 W/kg

13.1.3 5805 MHz, EUT Position: Bottom

Measurement Data

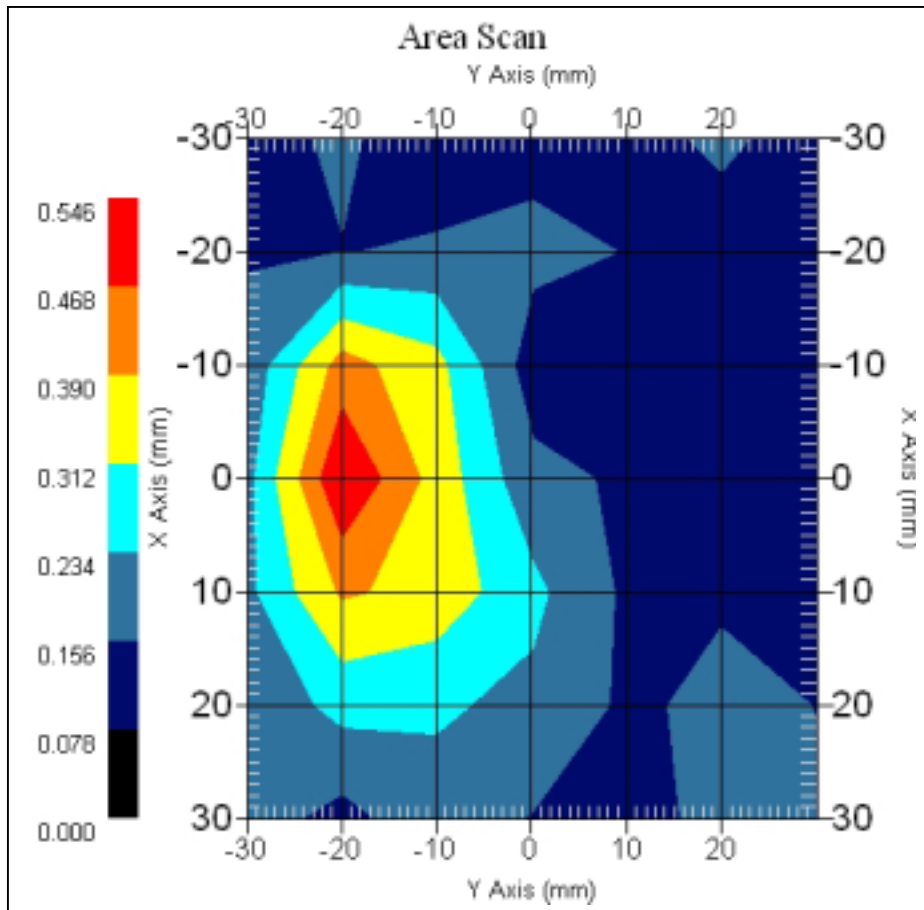
802.11a 5805 MHz, Normal Mode, Right Antenna

DUT Position : Bottom
Channel : High - 12
Crest Factor : 1
Tissue Temp. : 21.10 °C
Ambient Temp. : 21.90 °C
Area Scan : 7x7x1 : Measurement x=10mm, y=10mm, z=4mm
Zoom Scan : 11x11x15 : Measurement x=3mm, y=3mm, z=2mm

Power Drift-Start : 0.193 W/kg

Power Drift-Finish: 0.195 W/kg

Power Drift (%) : 1.05



1 gram SAR value : 0.554 W/kg

10 gram SAR value : 0.264 W/kg

Area Scan Peak SAR : 0.543 W/kg

Zoom Scan Peak SAR : 1.371 W/kg

13.1.4 5765 MHz, EUT Position: Top

Measurement Data

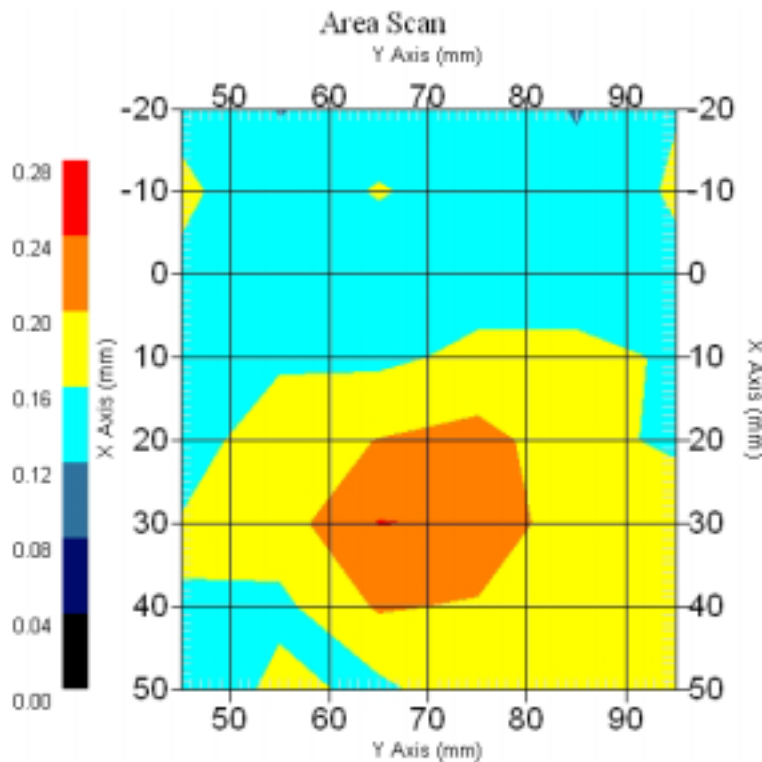
802.11a 5765 MHz, Normal Mode, Right Antenna

DUT Position : Top
Channel : Mid – 10
Crest Factor : 1
Tissue Temp. : 21.10 °C
Ambient Temp. : 21.90 °C
Area Scan : 8x6x1 : Measurement x=10mm, y=10mm, z=4mm
Zoom Scan : 5x5x8 : Measurement x=8mm, y=8mm, z=4mm

Power Drift-Start : 0.141 W/kg

Power Drift-Finish: 0.145 W/kg

Power Drift (%) : 2.128



1 gram SAR value : 0.228 W/kg

10 gram SAR value : 0.174 W/kg

Area Scan Peak SAR : 0.241 W/kg

Zoom Scan Peak SAR : 0.337 W/kg

13.1.5 5765 MHz, EUT Position: Front

Measurement Data

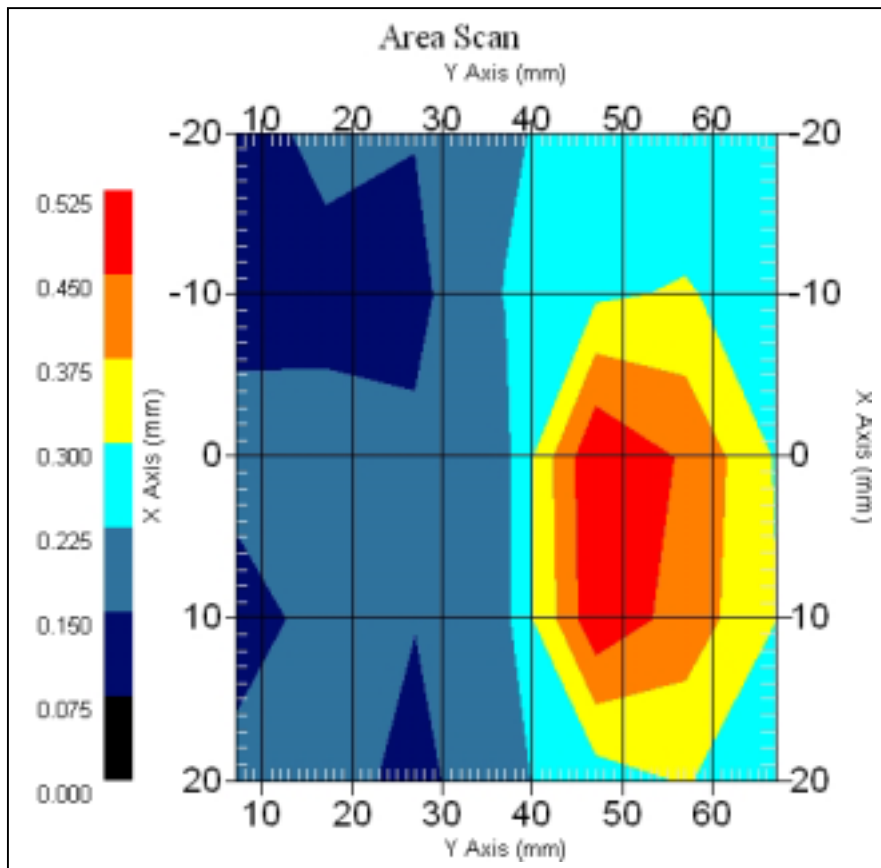
802.11a 5765 MHz, Normal Mode, Right Antenna

DUT Position : Front
Channel : Mid – 10
Crest Factor : 1
Tissue Temp. : 21.10 °C
Ambient Temp. : 21.90 °C
Area Scan : 5x7x1 : Measurement x=10mm, y=10mm, z=4mm
Zoom Scan : 5x5x8 : Measurement x=8mm, y=8mm, z=4mm

Power Drift-Start : 0.181 W/kg

Power Drift-Finish: 0.173 W/kg

Power Drift (%) : -4.448



1 gram SAR value : 0.481 W/kg

10 gram SAR value : 0.278 W/kg

Area Scan Peak SAR : 0.522 W/kg

Zoom Scan Peak SAR : 1.120 W/kg

13.2 802.11a (5725MHz ~5825MHz, Normal Mode), Left Antenna

13.2.1 5745 MHz, EUT Position: Bottom

Measurement Data

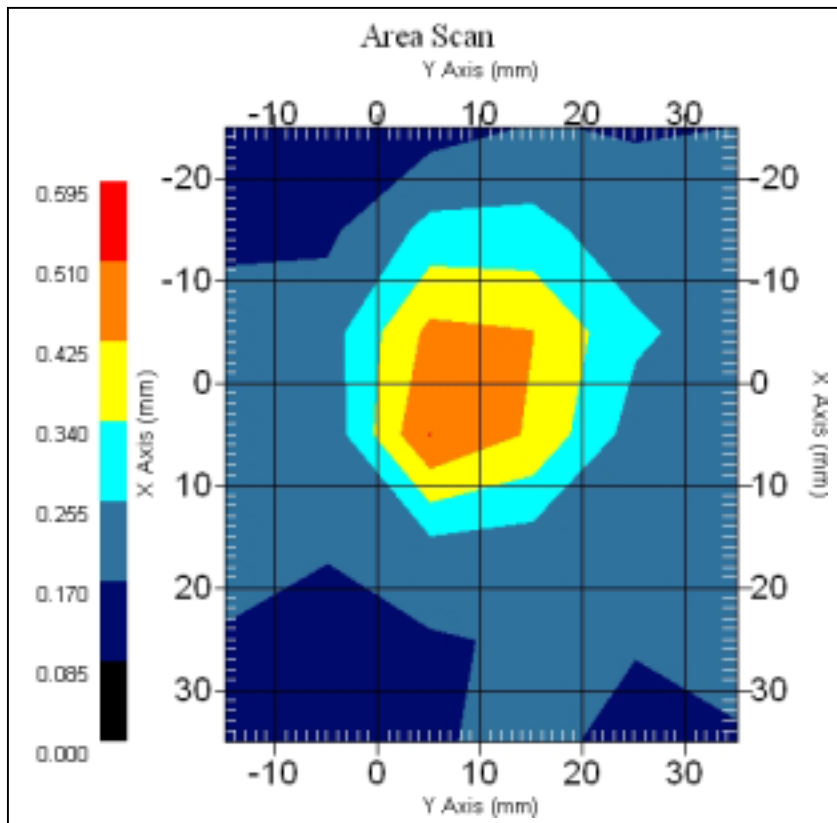
802.11a 5745 MHz, Normal Mode, Left Antenna

DUT Position : Bottom
Channel : Low - 9
Crest Factor : 1
Tissue Temp. : 21.1 °C
Ambient Temp. : 21.9 °C
Area Scan : 7x6x1 : Measurement x=10mm, y=10mm, z=4mm
Zoom Scan : 5x5x8 : Measurement x=8mm, y=8mm, z=4mm

Power Drift-Start : 0.440 W/kg

Power Drift-Finish: 0.436 W/kg

Power Drift (%) : -0.865



1 gram SAR value : 0.484 W/kg

10 gram SAR value : 0.260 W/kg

Area Scan Peak SAR : 0.511 W/kg

Zoom Scan Peak SAR : 1.140 W/kg

13.2.2 5765 MHz, EUT Position: Bottom

Measurement Data

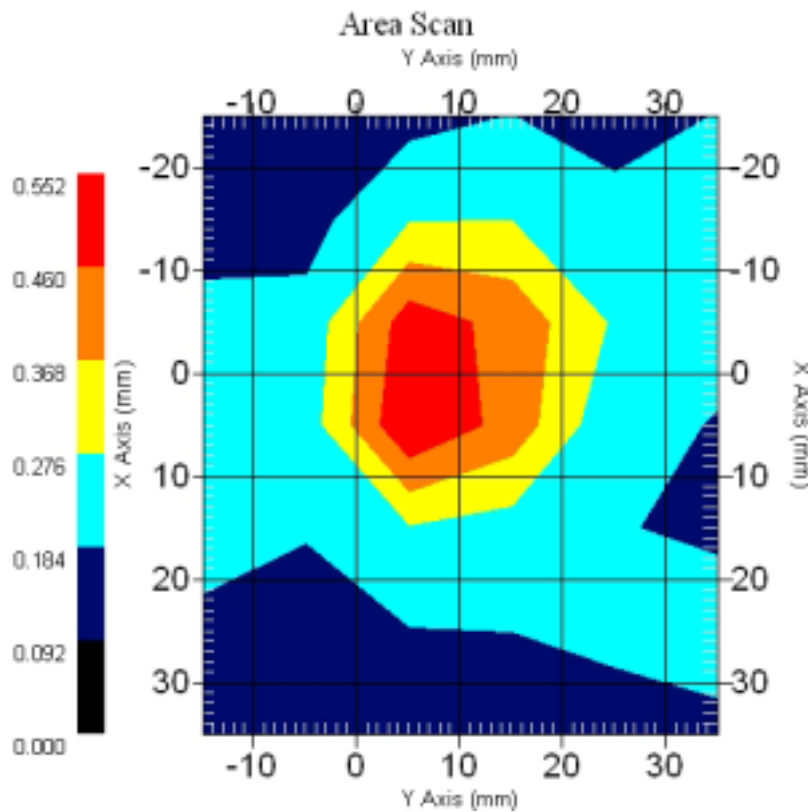
802.11a 5765 MHz Normal Mode, Left Antenna

DUT Position : Bottom
Channel : Mid - 10
Crest Factor : 1
Tissue Temp. : 21.10 °C
Ambient Temp. : 21.90 °C
Area Scan : 7x6x1 : Measurement x=10mm, y=10mm, z=4mm
Zoom Scan : 5x5x8 : Measurement x=8mm, y=8mm, z=4mm

Power Drift-Start : 0.479 W/kg

Power Drift-Finish: 0.490 W/kg

Power Drift (%) : 2.334



1 gram SAR value : 0.545 W/kg

10 gram SAR value : 0.278 W/kg

Area Scan Peak SAR : 0.550 W/kg

Zoom Scan Peak SAR : 1.311 W/kg

13.2.3 5805 MHz, EUT Position: Bottom

Measurement Data

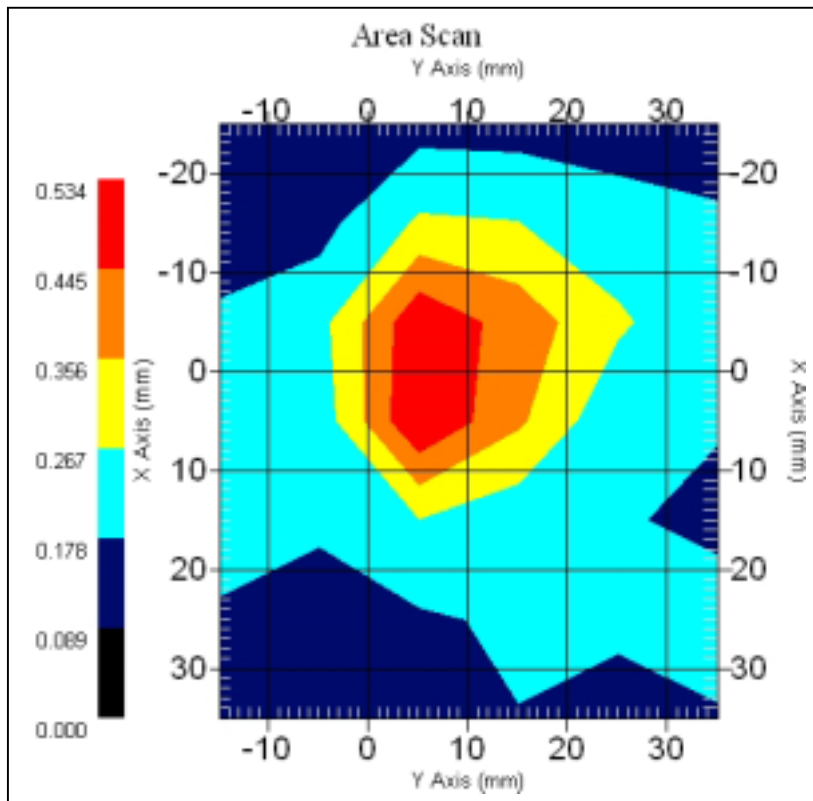
802.11a 5805 MHz, Normal Mode, Left Antenna

DUT Position : Bottom
Channel : High - 12
Crest Factor : 1
Tissue Temp. : 21.10 °C
Ambient Temp. : 21.90 °C
Area Scan : 7x6x1 : Measurement x=10mm, y=10mm, z=4mm
Zoom Scan : 5x5x8 : Measurement x=8mm, y=8mm, z=4mm

Power Drift-Start : 0.470 W/kg

Power Drift-Finish: 0.452 W/kg

Power Drift (%) : -3.830



1 gram SAR value : 0.495 W/kg

10 gram SAR value : 0.256 W/kg

Area Scan Peak SAR : 0.533 W/kg

Zoom Scan Peak SAR : 1.150 W/kg

13.2.4 5765 MHz, EUT Position: Top

Measurement Data

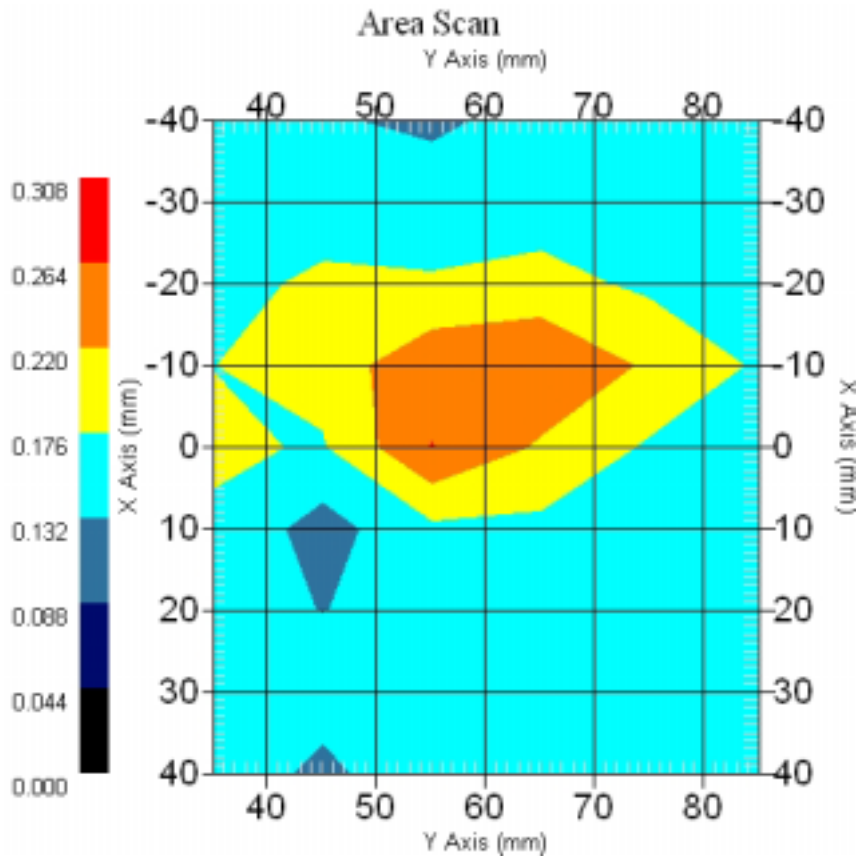
802.11a 5765 MHz, Normal Mode, Left Antenna

DUT Position : Top
Channel : Mid – 10
Crest Factor : 1
Tissue Temp. : 21.10 °C
Ambient Temp. : 21.90 °C
Area Scan : 9x6x1 : Measurement x=10mm, y=10mm, z=4mm
Zoom Scan : 5x5x8 : Measurement x=8mm, y=8mm, z=4mm

Power Drift-Start : 0.139 W/kg

Power Drift-Finish: 0.145 W/kg

Power Drift (%) : 4.317



1 gram SAR value : 0.275 W/kg

10 gram SAR value : 0.193 W/kg

Area Scan Peak SAR : 0.265 W/kg

Zoom Scan Peak SAR : 0.390 W/kg

13.2.5 5765 MHz, EUT Position: Front

Measurement Data

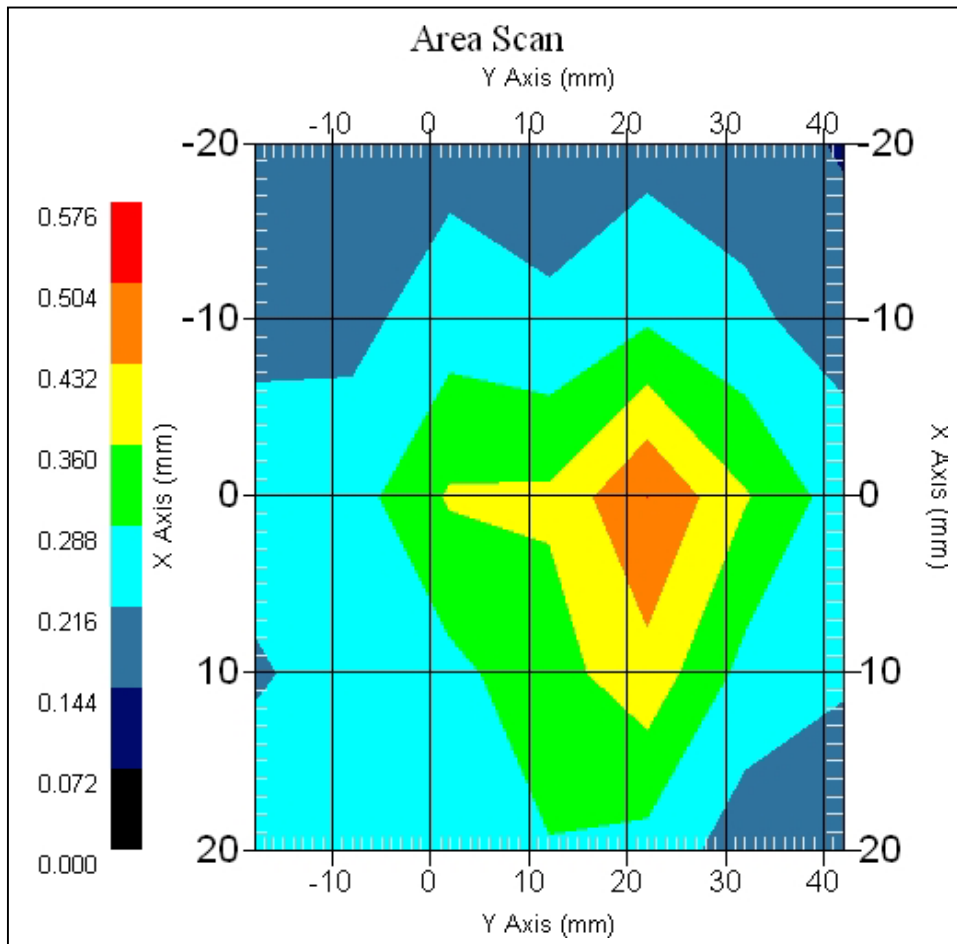
802.11a 5765 MHz, Normal Mode, Left Antenna

DUT Position : Front
Channel : Mid - 10
Crest Factor : 1
Tissue Temp. : 21.10 °C
Ambient Temp. : 21.90 °C
Area Scan : 5x7x1 : Measurement x=10mm, y=10mm, z=4mm
Zoom Scan : 5x5x8 : Measurement x=8mm, y=8mm, z=4mm

Power Drift-Start : 0.380 W/kg

Power Drift-Finish: 0.374 W/kg

Power Drift (%) : -1.617



1 gram SAR value : 0.493 W/kg
10 gram SAR value : 0.290 W/kg
Area Scan Peak SAR : 0.504 W/kg
Zoom Scan Peak SAR : 1.281 W/kg

13.3 802.11a (5725MHz ~5825MHz, Turbo Mode), Right Antenna

13.3.1 5760 MHz, EUT Position: Bottom

Measurement Data

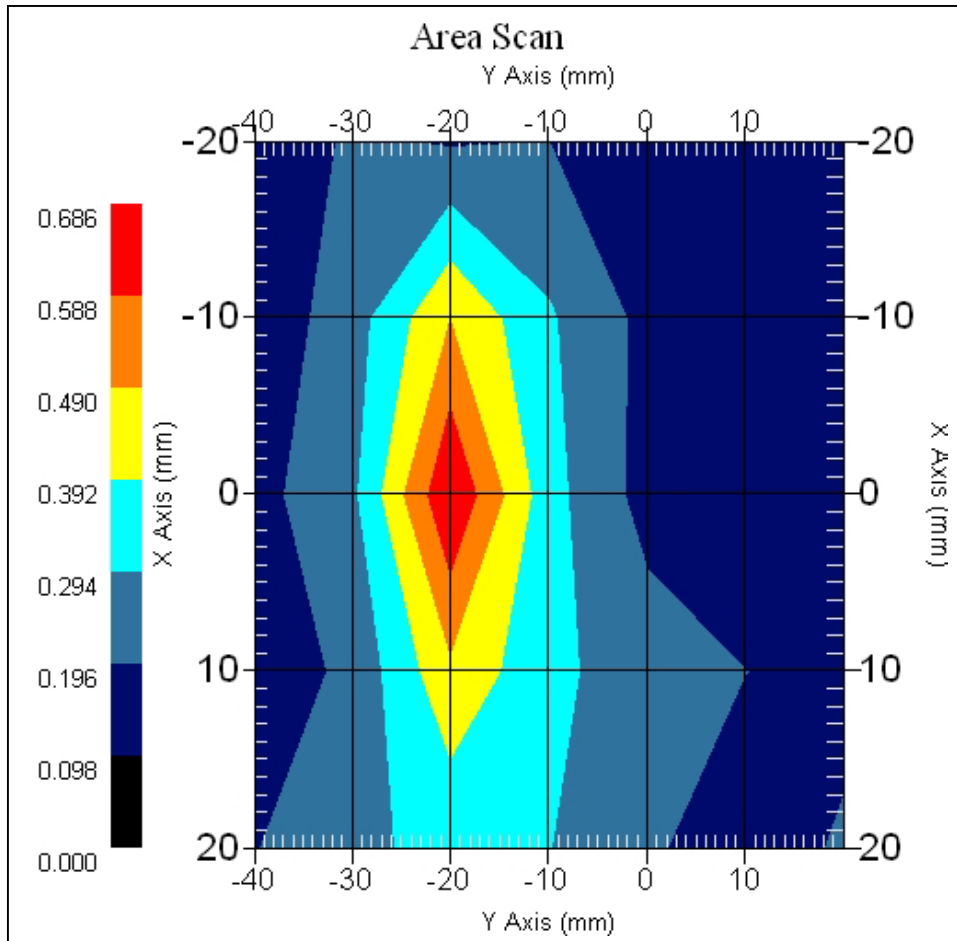
802.11a 5760 MHz, Turbo Mode, Right Antenna

DUT Position : Bottom
Channel : Low - 4
Crest Factor : 1
Tissue Temp. : 21.10 °C
Ambient Temp. : 21.90 °C
Area Scan : 5x7x1 : Measurement x=10mm, y=10mm, z=4mm
Zoom Scan : 5x5x8 : Measurement x=8mm, y=8mm, z=4mm

Power Drift-Start : 0.180 W/kg

Power Drift-Finish: 0.177 W/kg

Power Drift (%) : -1.666



1 gram SAR value : 0.597 W/kg

10 gram SAR value : 0.289 W/kg

Area Scan Peak SAR : 0.683 W/kg

Zoom Scan Peak SAR : 1.591 W/kg

13.3.2 5800 MHz, EUT Position: Bottom

Measurement Data

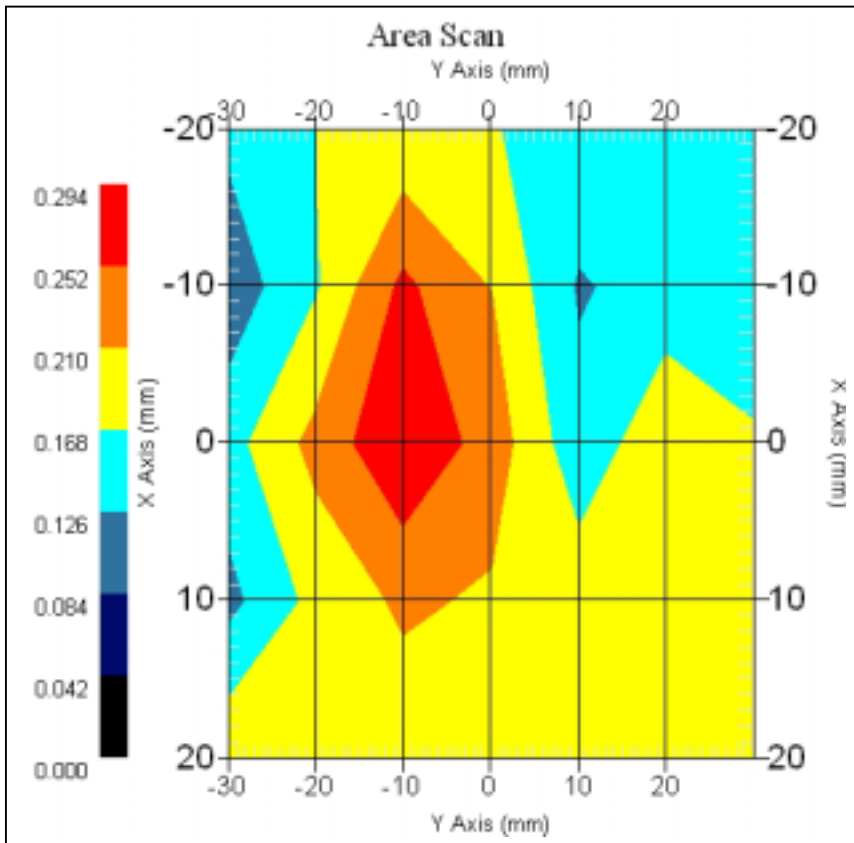
802.11a 5800MHz Turbo Mode, Right Antenna

DUT Position : Bottom
Channel : High – 5
Crest Factor : 1
Tissue Temp. : 21.10 °C
Ambient Temp. : 21.90 °C
Area Scan : 5x7x1 : Measurement x=10mm, y=10mm, z=4mm
Zoom Scan : 5x5x8 : Measurement x=8mm, y=8mm, z=4mm

Power Drift-Start : 0.251 W/kg

Power Drift-Finish: 0.242 W/kg

Power Drift (%) : -3.586



1 gram SAR value : 0.293 W/kg

10 gram SAR value : 0.195 W/kg

Area Scan Peak SAR : 0.291 W/kg

Zoom Scan Peak SAR : 0.620 W/kg

13.3.3 5760 MHz, EUT Position: Top

Measurement Data

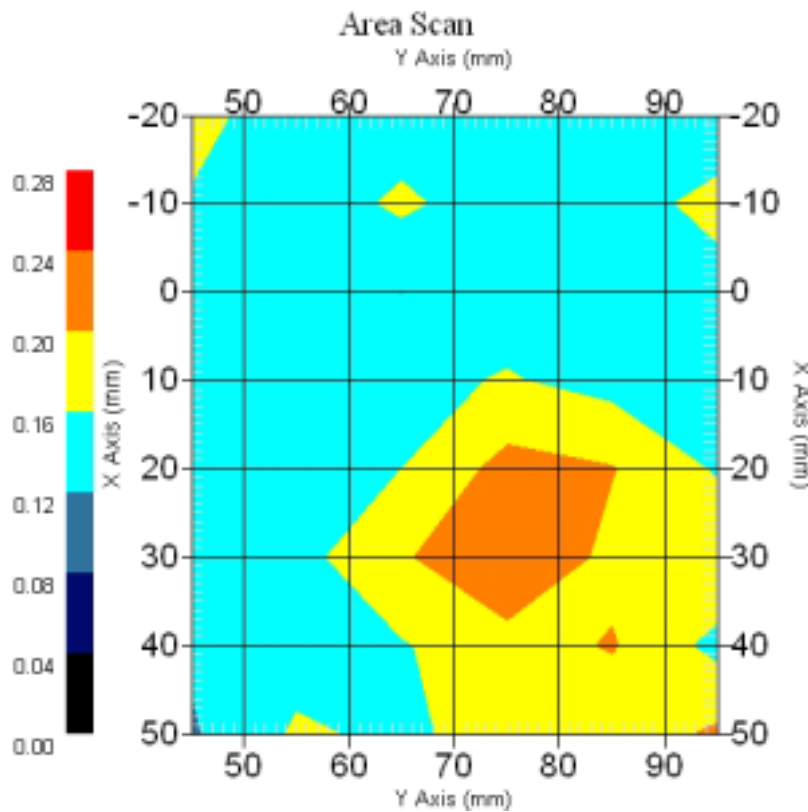
802.11a 5760 MHz, Turbo Mode, Right Antenna

DUT Position : Top
Channel : Low - 4
Crest Factor : 1
Tissue Temp. : 21.10 °C
Ambient Temp. : 21.90 °C
Area Scan : 8x6x1 : Measurement x=10mm, y=10mm, z=4mm
Zoom Scan : 5x5x8 : Measurement x=8mm, y=8mm, z=4mm

Power Drift-Start : 0.129 W/kg

Power Drift-Finish: 0.124 W/kg

Power Drift (%) : -4.194



1 gram SAR value : 0.210 W/kg

10 gram SAR value : 0.164 W/kg

Area Scan Peak SAR : 0.240 W/kg

Zoom Scan Peak SAR : 0.400 W/kg

13.3.4 5760 MHz, EUT Position: Front

Measurement Data

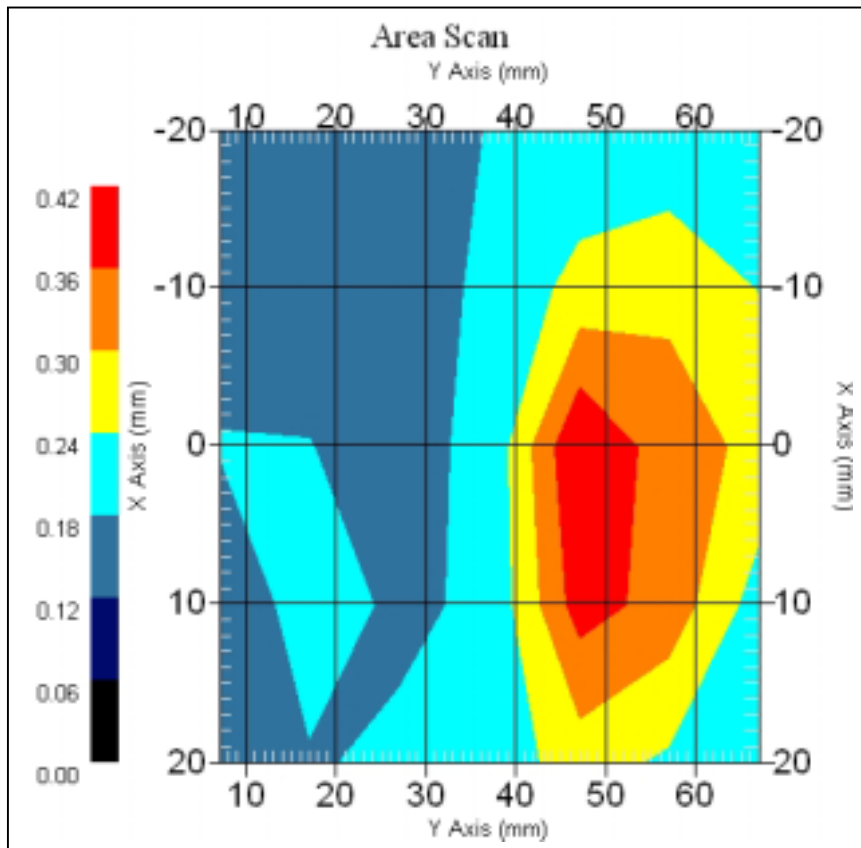
802.11a 5760 MHz, Turbo Mode, Right Antenna

DUT Position : Front
Channel : Low - 4
Crest Factor : 1
Tissue Temp. : 21.10 °C
Ambient Temp. : 21.90 °C
Area Scan : 5x7x1 : Measurement x=10mm, y=10mm, z=4mm
Zoom Scan : 5x5x8 : Measurement x=8mm, y=8mm, z=4mm

Power Drift-Start : 0.148 W/kg

Power Drift-Finish: 0.144 W/kg

Power Drift (%) : -2.439



1 gram SAR value : 0.429 W/kg

10 gram SAR value : 0.245 W/kg

Area Scan Peak SAR : 0.419 W/kg

Zoom Scan Peak SAR : 0.990 W/kg

13.4 802.11a (5725MHz ~5825MHz, Turbo Mode), Left Antenna

13.4.1 5760 MHz, EUT Position: Bottom

Measurement Data

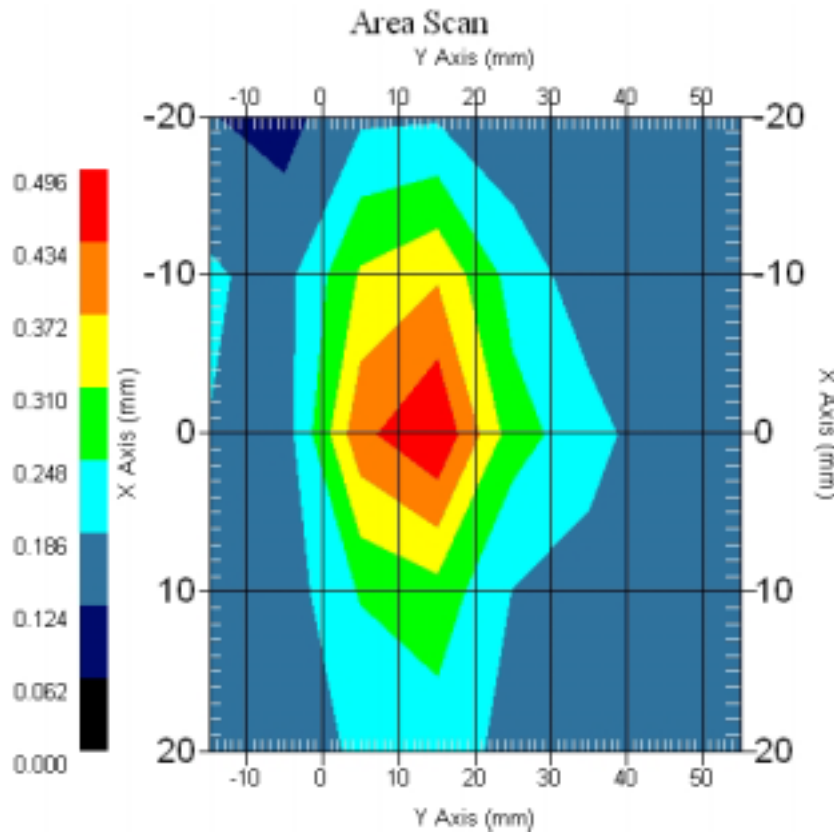
802.11a 5760 MHz, Turbo Mode, Left Antenna

DUT Position : Bottom
Channel : Low - 4
Crest Factor : 1
Tissue Temp. : 21.10 °C
Ambient Temp. : 21.90 °C
Area Scan : 5x8x1 : Measurement x=10mm, y=10mm, z=4mm
Zoom Scan : 5x5x8 : Measurement x=8mm, y=8mm, z=4mm

Power Drift-Start : 0.292 W/kg

Power Drift-Finish: 0.298 W/kg

Power Drift (%) : 2.054



1 gram SAR value : 0.474 W/kg

10 gram SAR value : 0.266 W/kg

Area Scan Peak SAR : 0.495 W/kg

Zoom Scan Peak SAR : 1.110 W/kg

13.4.2 5800 MHz, EUT Position: Bottom

Measurement Data

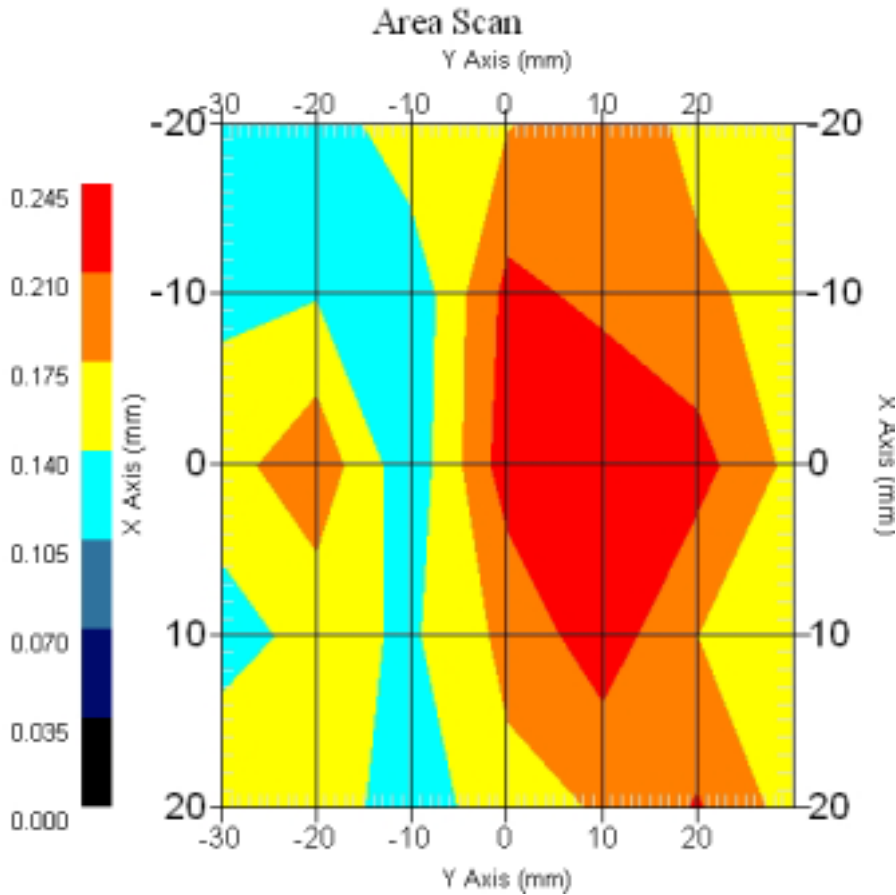
802.11a 5800MHz Turbo Mode, Left Antenna

DUT Position : Bottom
Channel : High – 5
Crest Factor : 1
Tissue Temp. : 21.10 °C
Ambient Temp. : 21.90 °C
Area Scan : 5x7x1 : Measurement x=10mm, y=10mm, z=4mm
Zoom Scan : 5x5x8 : Measurement x=8mm, y=8mm, z=4mm

Power Drift-Start : 0.229 W/kg

Power Drift-Finish: 0.219 W/kg

Power Drift (%) : -4.367



1 gram SAR value : 0.239 W/kg

10 gram SAR value : 0.190 W/kg

Area Scan Peak SAR : 0.244 W/kg

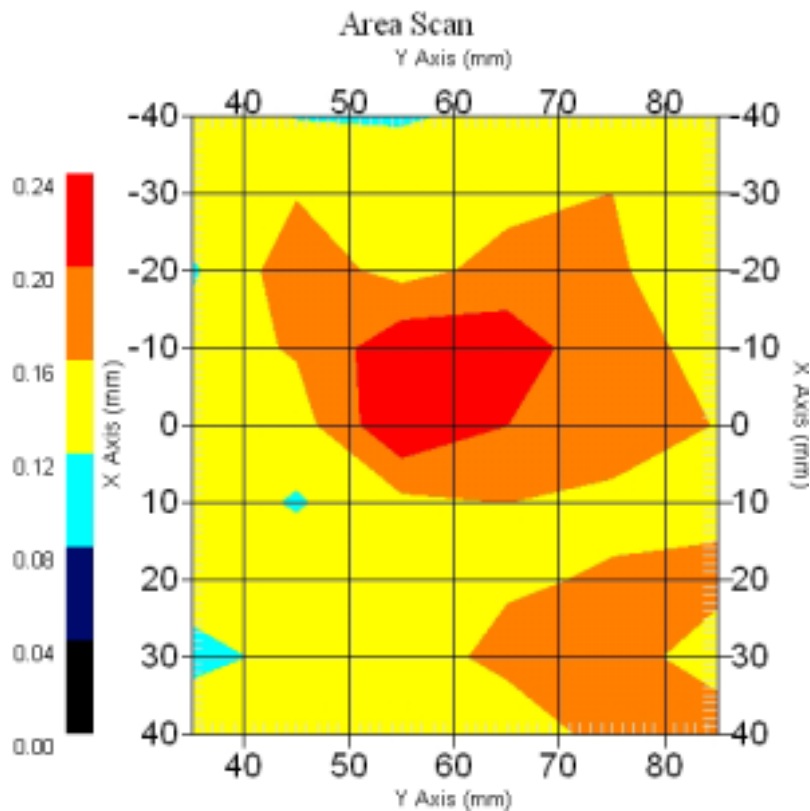
Zoom Scan Peak SAR : 0.375 W/kg

13.4.3 5760 MHz, EUT Position: Top

Measurement Data

802.11a 5760 MHz, Turbo Mode, Left Antenna

DUT Position : Top
Channel : Low - 4
Crest Factor : 1
Tissue Temp. : 21.10 °C
Ambient Temp. : 21.90 °C
Area Scan : 9x6x1 : Measurement x=10mm, y=10mm, z=4mm
Zoom Scan : 5x5x8 : Measurement x=8mm, y=8mm, z=4mm
Power Drift-Start : 0.127 W/kg
Power Drift-Finish: 0.127 W/kg
Power Drift (%) : -0.007



1 gram SAR value : 0.220 W/kg
10 gram SAR value : 0.208 W/kg
Area Scan Peak SAR : 0.237 W/kg
Zoom Scan Peak SAR : 0.470 W/kg

13.4.4 5760 MHz, EUT Position: Front

Measurement Data

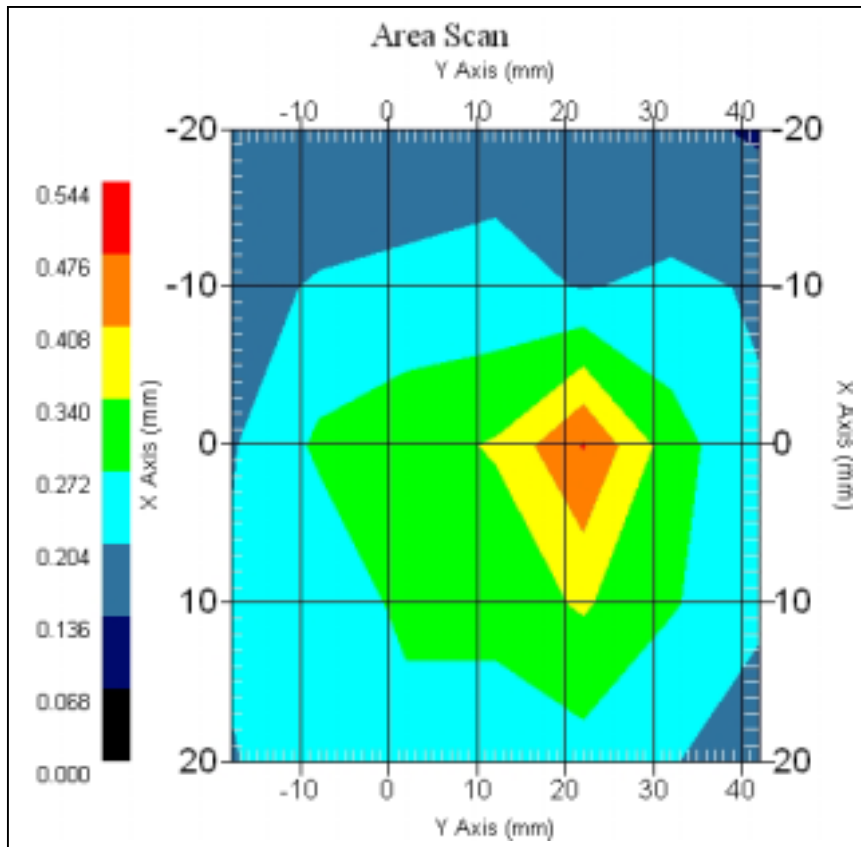
802.11a 5760 MHz, Turbo Mode, Left Antenna

DUT Position : Front
Channel : Low - 4
Crest Factor : 1
Tissue Temp. : 21.10 °C
Ambient Temp. : 21.90 °C
Area Scan : 5x7x1 : Measurement x=10mm, y=10mm, z=4mm
Zoom Scan : 5x5x8 : Measurement x=8mm, y=8mm, z=4mm

Power Drift-Start : 0.355 W/kg

Power Drift-Finish: 0.362 W/kg

Power Drift (%) : 1.972



1 gram SAR value : 0.427 W/kg

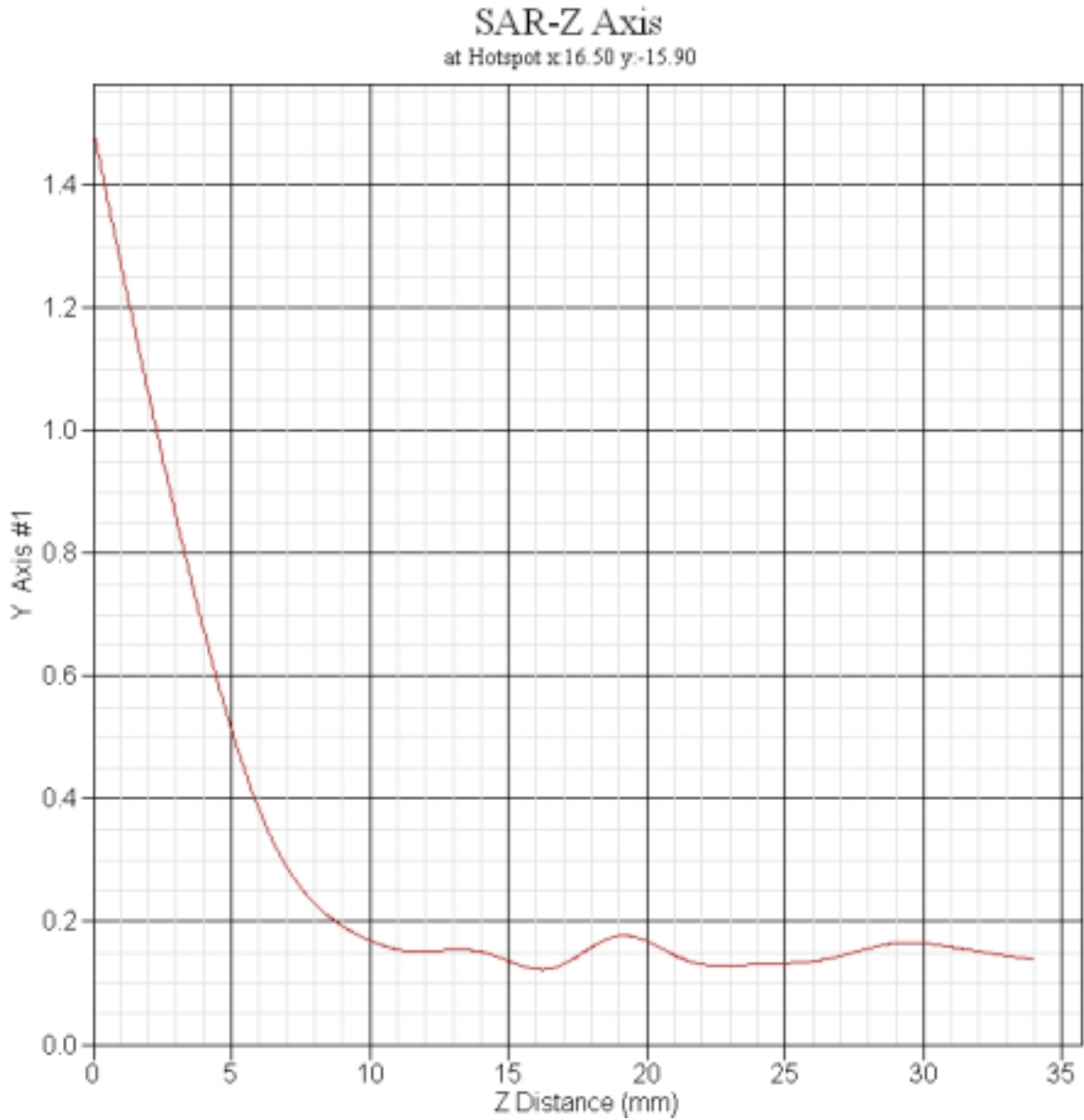
10 gram SAR value : 0.264 W/kg

Area Scan Peak SAR : 0.479 W/kg

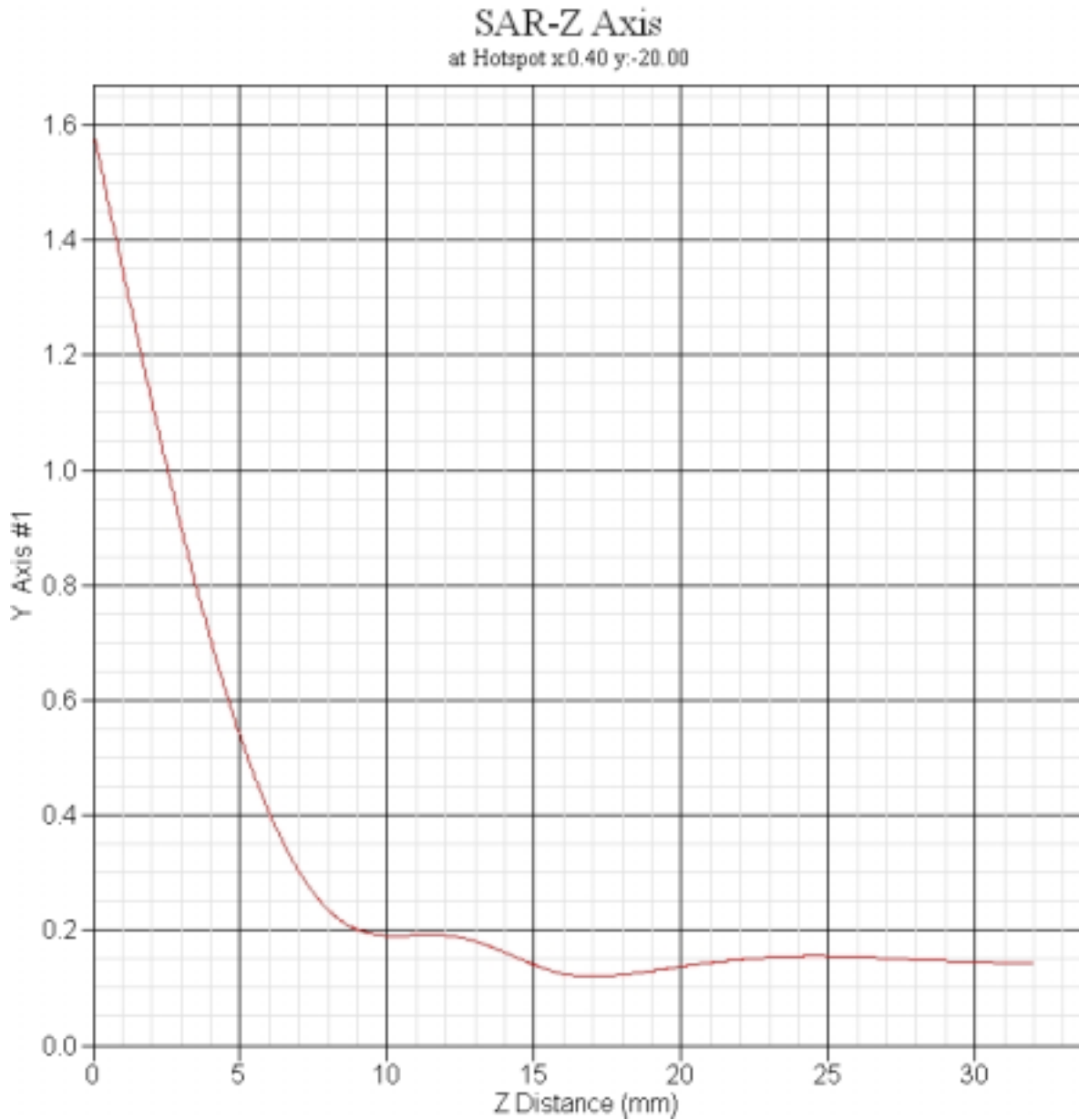
Zoom Scan Peak SAR : 0.920 W/kg

13.5 5800MHz Z-Axis plot

13.5.1 Frequency: 802.11a 5765 MHz Normal Mode, EUT Bottom (Right Antenna)



13.5.2 Frequency: 802.11a 5760MHz Turbo Mode, EUT Bottom (Right Antenna)

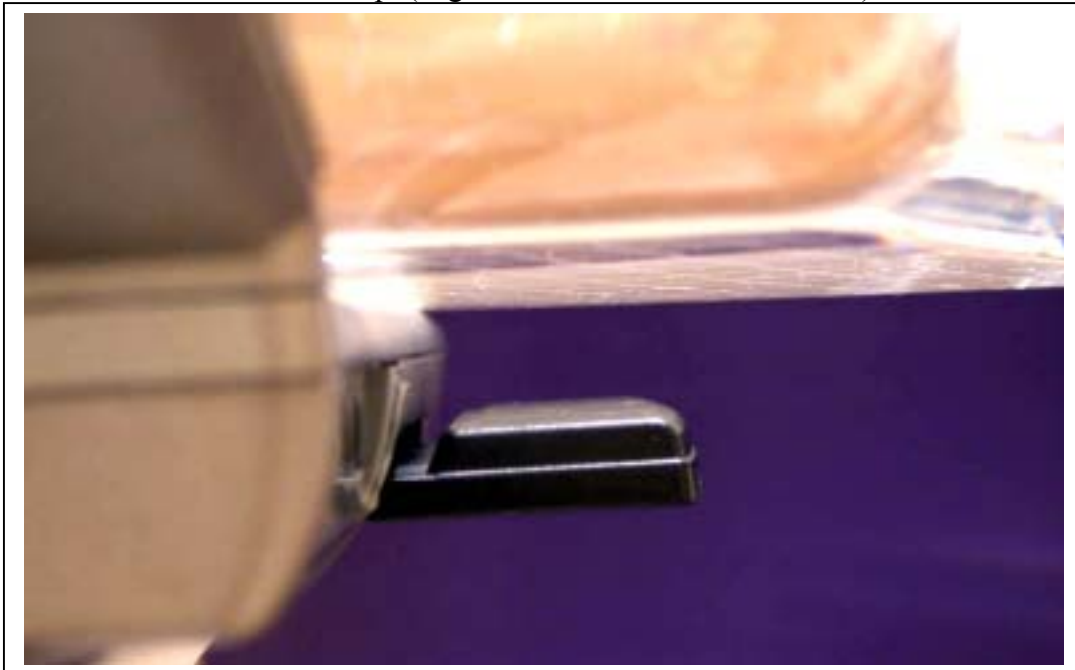


14. Test Setup Photographs

14.1 Test Position : EUT Bottom (Right Antenna and Left Antenna)



14.2 Test Position : EUT Top (Right Antenna and Left Antenna)



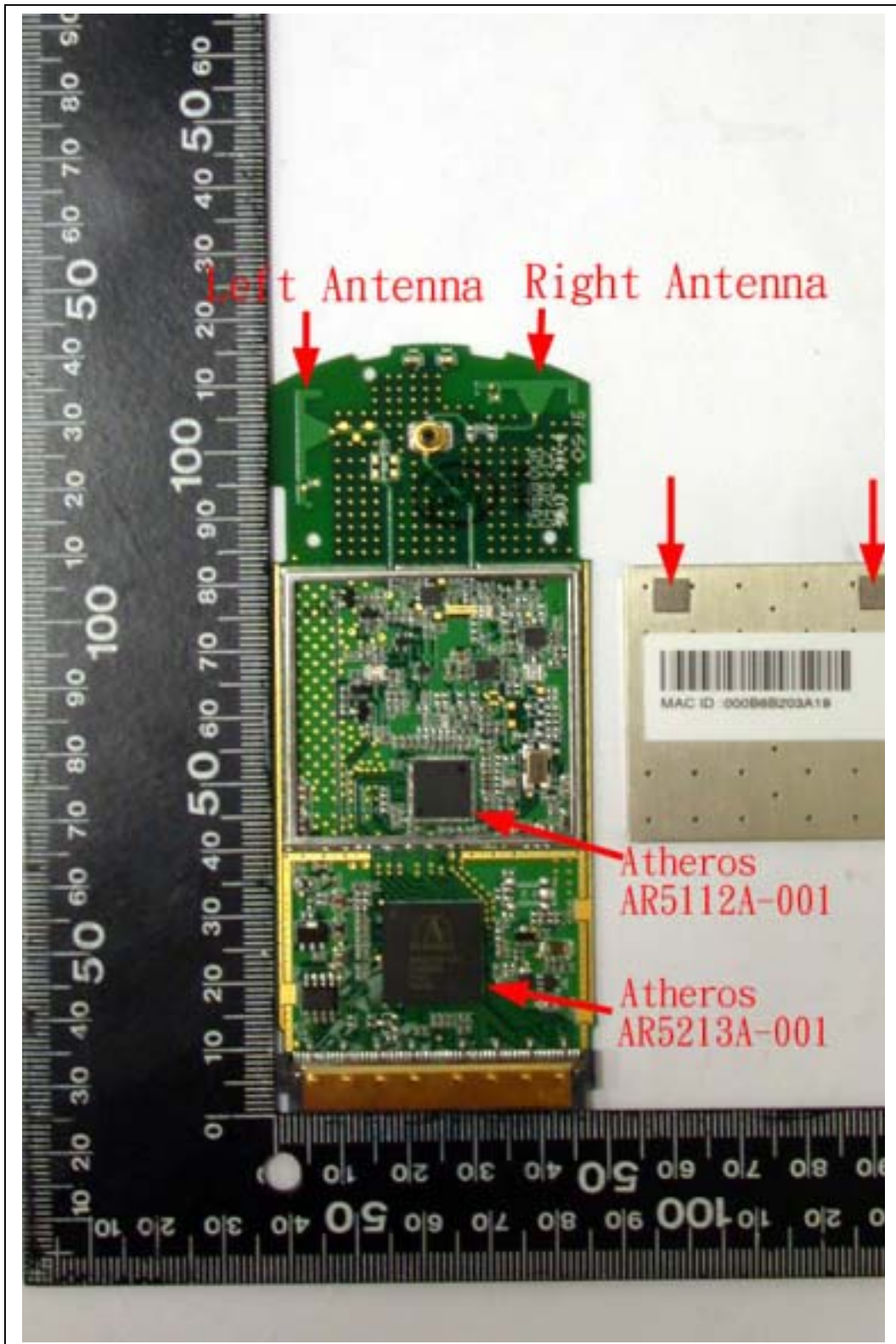
Test Position : EUT Front (Right Antenna and Left Antenna)

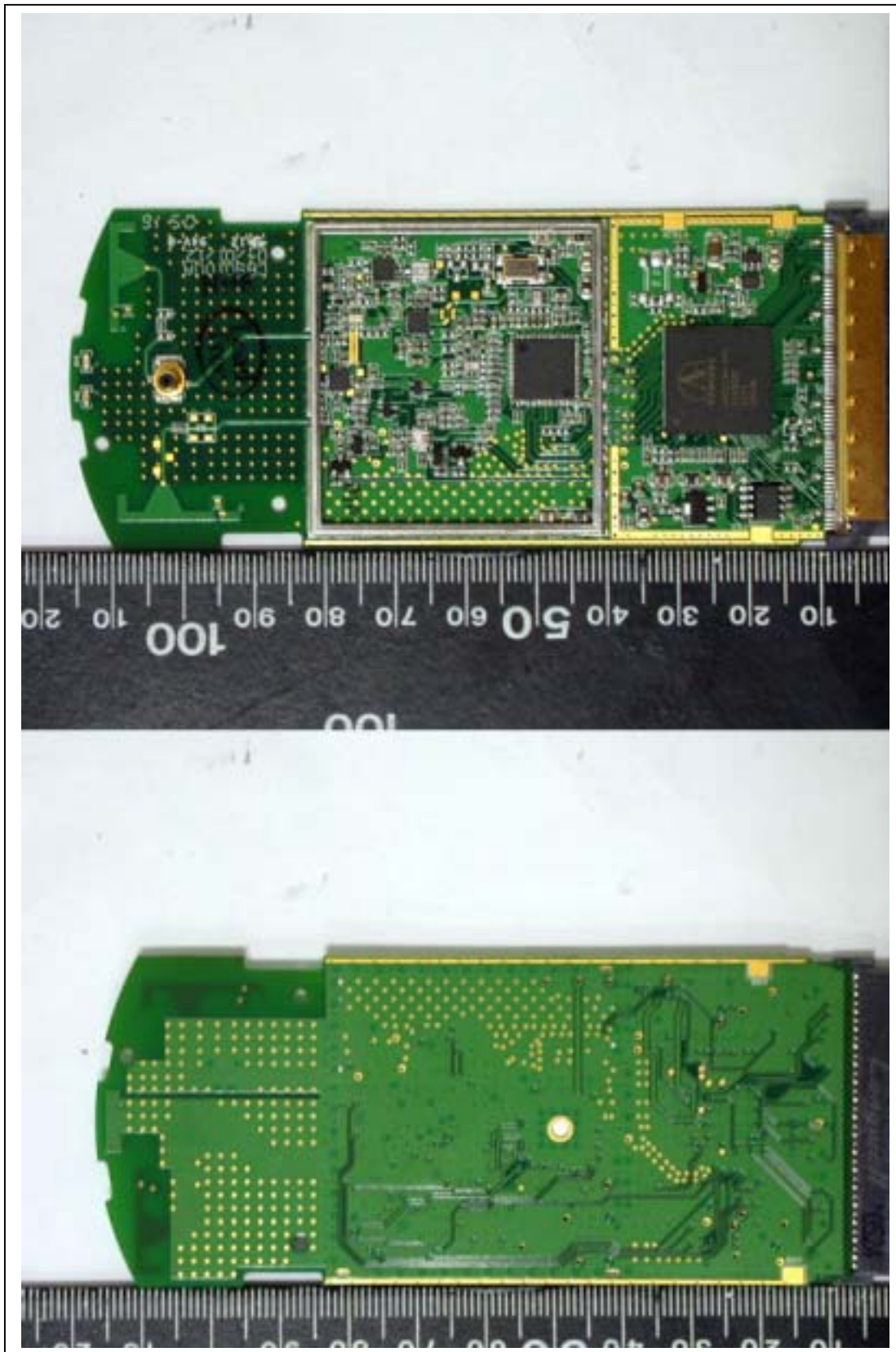


15. EUT Photograph









16. Appendix:Probe and Validation Dipole calibration

16.1 Probe: Refer to Probe_Cal.Pdf attached.

16.2 Dipole: Refer to Dipole_Cal.pdf attached.

16.3 SAR Report Distributions Data:

Refer to PH52ABG_SAR_1108_Distributions data.pdf attached

16.4 Supplementary SAR Test Report:

refer to PH52ABG_SAR_Supplement Report.pdf attached

16.5 Supplementary Report SAR Distributions Data:

refer to PH52ABG_SAR_Supplement Report_Distributions data attached.PDF