

# SAR Test Report

*of*

*Product Name*

**802.11a+b+g Wireless CARDBUS ADAPTER**

*Model*

**PH52ABG**

*Applied by:*

PacketHop Inc.  
1301 Shoreway Road, Suite 200,  
Belmont, CA 94002  
U.S.A.

*Test Performed by:*

**International Standards Laboratory**

No. 120, Lane 180, San Ho Tsuen, Hsin Ho Rd.  
Lung-Tan Hsiang, Tao Yuan County 325  
Taiwan, R.O.C.  
Tel:(03)407-1718 Fax:(03)407-1738

**Report Number: 05LR025SAR-F-1**

**Issue Date: 2005/09/08**

HC LAB:NVLAP:200234-0;VCCI: R-341,C-354;NEMKO:ELA 113a,113c;BSMI:SL2-IN-E-0037;SL2-R1-E-0037;CNLA:1178

LT LAB:NVLAP:200234-0;VCCI: R-1435,C-1440;NEMKO:ELA 113b,113d;BSMI:SL2-IN-E-0013;CNLA:0997

ISL-T10-R31-1

## Contents of Report

1.	General .....	1
1.1	Certification of Accuracy of Test Data .....	1
	PacketHop Inc. ....	1
2.	Description of Equipment Under Test (EUT) .....	2
2.1	Test Environment .....	3
3.	SAR Measurement System.....	4
3.1	ALSAS-10U System Description.....	4
3.1.1	Applications.....	4
3.1.2	Area Scans.....	4
3.1.3	Zoom Scan (Cube Scan Averaging).....	5
3.1.4	ALSAS-10U Interpolation and Extrapolation Uncertainty.....	5
3.2	Isotropic E-Field Probe.....	5
3.2.1	Isotropic E-Field Probe Specification.....	7
3.3	Boundary Detection Unit and Probe Mounting Device .....	7
3.4	Daq-Paq (Analog to Digital Electronics) .....	8
3.5	Axis Articulated Robot.....	8
3.6	ALSAS Universal Workstation .....	9
3.7	Universal Device Positioner .....	9
3.8	Phantom Types .....	9
3.8.1	APREL Laboratories Universal Phantom.....	10
4.	Tissue Simulating Liquid .....	11
4.1	The composition of the tissue simulating liquid.....	11
4.2	Tissue Calibration Result .....	11
4.3	Tissue Dielectric Parameters for Head and Body Phantoms.....	13
5.	SAR Measurement Procedure .....	14
5.1	SAR System Validation.....	14
5.1.1	Validation Dipoles.....	14
5.1.2	Validation Result .....	14
5.2	SAR Measurement Procedure .....	16
6.	SAR Exposure Limits.....	17
7.	Test Equipment List .....	18
8.	Measurement Uncertainty .....	19
9.	Test Result Summary .....	20
9.1	802.11b Test Result .....	20
9.2	802.11g Test Result .....	20
9.3	802.11a (5150MHz ~5350MHz, Normal Mode) Test Result .....	21
9.4	802.11a (5150MHz ~5350MHz, Turbo Mode) Test Result.....	21
9.5	802.11a (5725MHz ~5825MHz, Normal Mode) Test Result .....	22
9.6	802.11a (5725MHz ~5825MHz, Turbo Mode) Test Result.....	22
10.	SAR System Validation Data.....	23
10.1	2450MHz System Validation Data .....	23
10.2	5200 MHz System Validation Data .....	27
10.3	5800 MHz System Validation Data .....	30
11.	2450MHz SAR measurement Data .....	33
11.1	802.11b, Right Antenna .....	34

11.1.1	2412MHz, EUT Position: Bottom .....	34
11.1.2	2437MHz, EUT Position: Bottom .....	35
11.1.3	2462MHz, EUT Position: Bottom .....	36
11.1.4	2437MHz, EUT Position: Top.....	37
11.1.5	2437MHz, EUT Position: Front .....	38
11.2	802.11b, Left Antenna.....	39
11.2.1	2412MHz, EUT Position: Bottom .....	39
11.2.2	2437MHz, EUT Position: Bottom .....	40
11.2.3	2462MHz, EUT Position: Bottom .....	41
11.2.4	2437MHz, EUT Position: Top.....	42
11.2.5	2437MHz, EUT Position: Front .....	43
11.3	802.11g, Right Antenna .....	44
11.3.1	2412MHz, EUT Position: Bottom .....	44
11.3.2	2437MHz, EUT Position: Bottom .....	45
11.3.3	2462MHz, EUT Position: Bottom .....	46
11.3.4	2437MHz, EUT Position: Top.....	47
11.3.5	2437MHz, EUT Position: Front .....	48
11.4	802.11g, Left Antenna.....	49
11.4.1	2412MHz, EUT Position: Bottom .....	49
11.4.2	2437MHz, EUT Position: Bottom .....	50
11.4.3	2462MHz, EUT Position: Bottom .....	51
11.4.4	2437MHz, EUT Position: Top.....	52
11.4.5	2437MHz, EUT Position: Front .....	53
11.5	2450MHz Z-Axis plot.....	54
11.5.1	Frequency: 802.11b 2412MHz, EUT Bottom (Right Antenna) .....	54
11.5.2	Frequency: 802.11g 2412MHz, EUT Bottom (Right Antenna) .....	55
12.	5200 MHz SAR measurement Data .....	56
12.1	802.11a (5150MHz ~5350MHz, Normal Mode), Right Antenna.....	57
12.1.1	5180 MHz, EUT Position: Bottom .....	57
12.1.2	5240 MHz, EUT Position: Bottom .....	58
12.1.3	5260 MHz, EUT Position: Bottom .....	59
12.1.4	5320 MHz, EUT Position: Bottom .....	60
12.1.5	5260 MHz, EUT Position: Top.....	61
12.1.6	5260 MHz, EUT Position: Front .....	62
12.2	802.11a (5150MHz ~5350MHz, Normal Mode), Left Antenna.....	63
12.2.1	5180 MHz, EUT Position: Bottom .....	63
12.2.2	5240 MHz, EUT Position: Bottom .....	64
12.2.3	5260 MHz, EUT Position: Bottom .....	65
12.2.4	5320 MHz, EUT Position: Bottom .....	66
12.2.5	5260 MHz, EUT Position: Top.....	67
12.2.6	5260 MHz, EUT Position: Front .....	68
12.3	802.11a (5150MHz ~5350MHz, Turbo Mode), Right Antenna .....	69
12.3.1	5210 MHz, EUT Position: Bottom .....	69
12.3.2	5250 MHz, EUT Position: Bottom .....	70
12.3.3	5290 MHz, EUT Position: Bottom .....	71
12.3.4	5250 MHz, EUT Position: Top.....	72
12.3.5	5250 MHz, EUT Position: Front .....	73
12.4	802.11a (5150MHz ~5350MHz, Turbo Mode), Left Antenna .....	74
12.4.1	5210 MHz, EUT Position: Bottom .....	74
12.4.2	5250 MHz, EUT Position: Bottom .....	75
12.4.3	5290 MHz, EUT Position: Bottom .....	76
12.4.4	5250 MHz, EUT Position: Top.....	77
12.4.5	5250 MHz, EUT Position: Front .....	78
12.5	5200MHz Z-Axis plot.....	79
12.5.1	Frequency: 802.11a 5180MHz Normal Mode, EUT Bottom (Right Antenna) .....	79
12.5.2	Frequency: 802.11a 5210MHz Turbo Mode, EUT Bottom (Right Antenna).....	80
13.	5800 MHz SAR measurement Data .....	81

13.1	802.11a (5725MHz ~5825MHz, Normal Mode), Right Antenna.....	82
13.1.1	5745 MHz, EUT Position: Bottom.....	82
13.1.2	5765 MHz, EUT Position: Bottom.....	83
13.1.3	5805 MHz, EUT Position: Bottom.....	84
13.1.4	5765 MHz, EUT Position: Top.....	85
13.1.5	5765 MHz, EUT Position: Front.....	86
13.2	802.11a (5725MHz ~5825MHz, Normal Mode), Left Antenna.....	87
13.2.1	5745 MHz, EUT Position: Bottom.....	87
13.2.2	5765 MHz, EUT Position: Bottom.....	88
13.2.3	5805 MHz, EUT Position: Bottom.....	89
13.2.4	5765 MHz, EUT Position: Top.....	90
13.2.5	5765 MHz, EUT Position: Front.....	91
13.3	802.11a (5725MHz ~5825MHz, Turbo Mode), Right Antenna.....	92
13.3.1	5760 MHz, EUT Position: Bottom.....	92
13.3.2	5800 MHz, EUT Position: Bottom.....	93
13.3.3	5760 MHz, EUT Position: Top.....	94
13.3.4	5760 MHz, EUT Position: Front.....	95
13.4	802.11a (5725MHz ~5825MHz, Turbo Mode), Left Antenna.....	96
13.4.1	5760 MHz, EUT Position: Bottom.....	96
13.4.2	5800 MHz, EUT Position: Bottom.....	97
13.4.3	5760 MHz, EUT Position: Top.....	98
13.4.4	5760 MHz, EUT Position: Front.....	99
13.5	5800MHz Z-Axis plot.....	100
13.5.1	Frequency: 802.11a 5765 MHz Normal Mode, EUT Bottom (Right Antenna).....	100
13.5.2	Frequency: 802.11a 5760MHz Turbo Mode, EUT Bottom (Right Antenna).....	101
14.	Test Setup Photographs.....	102
14.1	Test Position : EUT Bottom (Right Antenna and Left Antenna).....	102
14.2	Test Position : EUT Top (Right Antenna and Left Antenna).....	102
15.	EUT Photograph.....	104
16.	Appendix:Probe and Validation Dipole calibration.....	108
16.1	Probe: Refer to Probe_Cal.Pdf attached.....	108
16.2	Dipole: Refer to Dipole_Cal.pdf attached.....	108

# 1. General

## 1.1 Certification of Accuracy of Test Data

**Standards:** FCC OET65 Supplement C June 2001

**Equipment Tested:** 802.11a+b+g WIRELESS CARDBUS ADAPTER

**Model:** PH52ABG

**Applied by:** **PacketHop Inc.**

**Sample received Date:** 2005/08/26

**Final test Date :** 2005/08/29 ~ 2005/09/02

**Test Site:** SAR test site

Maximum SAR Measurement (1g)

802.11b: 0.769 W/kg

802.11g: 0.489W/kg

**Test Result** 802.11a: 0.752 W/kg)

**Temperature** 21.9 ~ 22.8

**Humidity:** 51% ~ 58%

**Test Engineer:** *David CS Chiu*

David CS Chiu

All the tests in this report have been performed and recorded in accordance with the standards described above and performed by an independent test lab, International Standards Laboratory.

The test results contained in this report accurately represent the measurements of the characteristics and the energy generated by sample equipment under test at the time of the test.

The sample equipment tested as described in this report is in compliance with the limits of above standards.

Approve & Signature

*Eddy Hsiung*  
-----  
Eddy Hsiung/Director

Test results given in this report apply only to the specific sample(s) tested under stated test conditions. This report shall not be reproduced other than in full without the explicit written consent of ISL. This report totally contains 111 pages, including 1 cover page, 3 contents page, and 108 pages for the test description. This report must not be use to claim product endorsement by NVLAP, NIST, any agency of the federal government.

## 2. Description of Equipment Under Test (EUT)

Product Name	802.11a+b+g WIRELESS CARDBUS ADAPTER
Model No.	PH52ABG
FCC ID:	TCB-PH52ABG
TX Frequency	2412 MHz ~ 2462 MHz 5150 MHz ~ 5350 MHz 5725 MHz ~ 5825MHz
Number of Channel	802.11b: 11 802.11g: 11 802.11a: 12 (Normal Mode) 802.11a: 5 (Turbo Mode)
Type of Modulation	802.11b: DSSS 802.11g and 802.11a: OFDM
Max. Output Power (Conducted)	802.11b: 17.71 dBm 802.11g: 16.69 dBm 802.11a: 15.73dBm (Normal Mode) 802.11a: 15.39dBm (Turbo Mode)
Antenna Peak Gain	Right Antenna: 2.4GHz : 1.5dBi, 5GHz: 1.06dBi Left Antenna: 2.45GHz: -2.9dBi, 5GHz: 0.65dBi,
Antenna Type	Internal, Dual Band Printed IFA
Transfer Rate	802.11b: 1~11Mbps 802.11g: 6~54Mbps 802.11a: 6~54Mbps (normal mode) 802.11a: 12~108Mbps (Turbo mode)
Power Type	5V DC from Notebook PC
Device Category	Portable
RF Exposure Environment	Uncontrolled

## 2.1 Test Environment

Ambient conditions in the laboratory:

Items	Required	Actual
Temperature (°C)	18 ~ 25	22.3 (8/29/2005) 22.8 (8/30/2005) 21.9 (9/2/2005)
Humidity (%RH)	30 ~ 70	53 (8/29/2005) 58 (8/30/2005) 51 (9/2/2005)

### 3. SAR Measurement System

#### 3.1 ALSAS-10U System Description

**ALSAS-10-U** is fully compliant with the technical and scientific requirements of IEEE 1528, IEC 62209, CENELEC, ARIB, ACA, and the Federal Communications Commission. The system comprises of a six axes articulated robot which utilizes a dedicated controller.

ALSAS-10U uses the latest methodologies and FDTD modeling to provide a platform which is repeatable with minimum uncertainty.

##### 3.1.1 Applications

Predefined measurement procedures compliant with the guidelines of CENELEC, IEEE, IEC, FCC, etc are utilized during the assessment for the device. Automatic detection for all SAR maxima are embedded within the core architecture for the system, ensuring that peak locations used for centering the zoom scan are within a 1mm resolution and a 0.05mm repeatable position. System operation range currently available up-to 6 GHz in simulated tissue.

##### 3.1.2 Area Scans

Area scans are defined prior to the measurement process being executed with a user defined variable spacing between each measurement point (integral) allowing low uncertainty measurements to be conducted. Scans defined for FCC applications utilize a 10mm<sup>2</sup> step integral, with 1mm interpolation used to locate the peak SAR area used for zoom scan assessments.

Where the system identifies multiple SAR peaks (which are within 25% of peak value) the system will provide the user with the option of assessing each peak location individually for zoom scan averaging.





### 3.1.3 Zoom Scan (Cube Scan Averaging)

The averaging zoom scan volume utilized in the ALSAS-10U software is in the shape of a cube and the side dimension of a 1 g or 10 g mass is dependent on the density of the liquid representing the simulated tissue. A density of 1000 kg/m<sup>3</sup> is used to represent the head and body tissue density and not the phantom liquid density, in order to be consistent with the definition of the liquid dielectric properties, i.e. the side length of the 1 g cube is 10mm, with the side length of the 10 g cube 21,5mm.

When the cube intersects with the surface of the phantom, it is oriented so that 3 vertices touch the surface of the shell or the center of a face is tangent to the surface. The face of the cube closest to the surface is modified in order to conform to the tangent surface.

The zoom scan integer steps can be user defined so as to reduce uncertainty, but normal practice for typical test applications (including FCC) utilize a physical step of 5x5x8 (8mmx8mmx5mm) providing a volume of 32mm in the X & Y axis, and 35mm in the Z axis.

### 3.1.4 ALSAS-10U Interpolation and Extrapolation Uncertainty

The overall uncertainty for the methodology and algorithms the used during the SAR calculation was evaluated using the data from IEEE 1528 based on the example f3 algorithm:

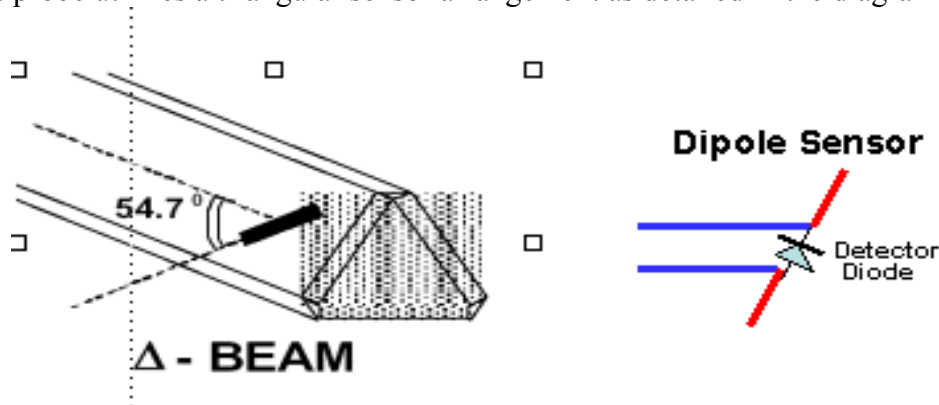
$$f_3(x, y, z) = A \frac{a^2}{\frac{a^2}{4} + x'^2 + y'^2} \cdot \left( e^{-\frac{2z}{a}} + \frac{a^2}{2(a + 2z)^2} \right)$$

## 3.2 Isotropic E-Field Probe

The isotropic E-Field probe has been fully calibrated and assessed for isotropicity, and boundary effect within a controlled environment. Depending on the frequency for which the probe is calibrated the method utilized for calibration will change. A number of methods is used for calibrating probes, and these are outlined in the table below:

Calibration Frequency	Air Calibration	Tissue Calibration
2450MHz	Waveguide	Temperature
5200MHz	Waveguide	Temperature
5800MHz	Waveguide	Temperature

The E-Field probe utilizes a triangular sensor arrangement as detailed in the diagram below:



SAR is assessed with a calibrated probe which moves at a default height of 5mm from the center of the diode, which is mounted to the sensor, to the phantom surface (in the Z Axis). The 5mm offset height has been selected so as to minimize any resultant boundary effect due to the probe being in close proximity to the phantom surface.

The following algorithm is an example of the function used by the system for linearization of the output from the probe when measuring complex modulation schemes.

$$V_i = U_i + U_i^2 \cdot \frac{cf}{dcp_i}$$

### 3.2.1 Isotropic E-Field Probe Specification

Calibration in Air	Frequency Dependent Below 2GHz Calibration in air performed in a TEM Cell Above 2GHz Calibration in air performed in waveguide
Sensitivity	0.70 $\mu\text{V}/(\text{V}/\text{m})^2$ to 0.85 $\mu\text{V}/(\text{V}/\text{m})^2$
Dynamic Range	0.0005 W/kg to 100W/kg
Isotropic Response	Better than 0.2dB
Diode Compression point (DCP)	Calibration for Specific Frequency
Probe Tip Radius	< 5mm
Sensor Offset	1.56 (+/- 0.02mm)
Probe Length	290mm
Video Bandwidth	@ 500 Hz: 1dB @1.02 KHz: 3dB
Boundary Effect	Less than 2% for distance greater than 2.4mm
Spatial Resolution	Diameter less than 5mm Compliant with Standards

### 3.3 Boundary Detection Unit and Probe Mounting Device

ALSAS-10U incorporates a boundary detection unit with a sensitivity of 0.05mm for detecting all types of surfaces. The robust design allows for detection during probe tilt (probe normalize) exercises, and utilizes a second stage emergency stop. The signal electronics are fed directly into the robot controller for high accuracy surface detection in lateral and axial detection modes (X, Y, & Z).

The probe is mounted directly onto the Boundary Detection unit for accurate tooling and displacement calculations controlled by the robot kinematics. The probe is connect to an isolated probe interconnect where the output stage of the probe is fed directly into the amplifier stage of the Daq-Paq

### 3.4 Daq-Paq (Analog to Digital Electronics)

ALSAS-10U incorporates a fully calibrated Daq-Paq (analog to digital conversion system) which has a 4 channel input stage, sent via a 2 stage auto-set amplifier module. The input signal is amplified accordingly so as to offer a dynamic range from 5 $\mu$ V to 800mV. Integration of the fields measured is carried out at board level utilizing a Co-Processor which then sends the measured fields down into the main computational module in digitized form via an RS232 communications port. Probe linearity and duty cycle compensation is carried out within the main Daq-Paq module.

ADC	12 Bit
Amplifier Range	20mV to 200mV and 150mV to 800mV
Field Integration	Local Co-Processor utilizing proprietary integration algorithms
Number of Input Channels	4 in total 3 dedicated and 1 spare
Communication	Packet data via RS232

### 3.5 Axis Articulated Robot



ALSAS-10U utilizes a six axis articulated robot, which is controlled using a Pentium based real-time movement controller. The movement kinematics engine utilizes proprietary (Thermo CRS) interpolation and extrapolation algorithms, which allow full freedom of movement for each of the six joints within the working envelope. Utilization of joint 6 allows for full probe rotation with a tolerance better than 0.05mm around the central axis.

Robot/Controller Manufacturer	Thermo CRS
Number of Axis	Six independently controlled axis
Positioning Repeatability	0.05mm
Controller Type	Single phase Pentium based C500C
Robot Reach	710mm
Communication	RS232 and LAN compatible

### 3.6 ALSAS Universal Workstation

ALSAS Universal workstation allows for repeatability and fast adaptability. It allows users to do calibration, testing and measurements using different types of phantoms with one set up, which significantly speeds up the measurement process.

### 3.7 Universal Device Positioner

The universal device positioner allow complete freedom of movement of the EUT. Developed to hold a EUT in a free-space scenario any additional loading attributable to the material used in the construction of the positioner has been eliminated. Repeatability has been enhanced through the linear scales which form the design used to indicate positioning for any given test scenario in all major axes. A 15° tilt indicator is included for the of aid cheek to tilt movements for head SAR analysis. Overall uncertainty for measurements have been reduced due to the design of the Universal device positioner, which allows positioning of a device in as near to a free-space scenario as possible, and by providing the means for complete repeatability.

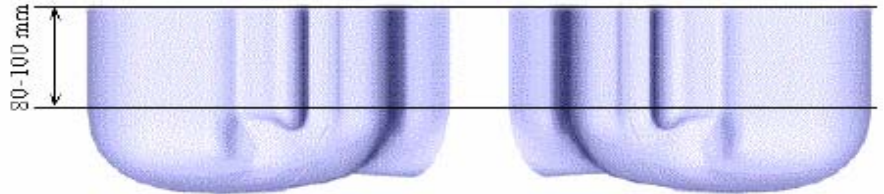
### 3.8 Phantom Types

The ALSAS-10U allows the integration of multiple phantom types. SAM Phantoms fully compliant with IEEE 1528, Universal Phantom, and Universal Flat.



### APREL SAM Phantoms

The SAM phantoms developed using the IEEE SAM CAD file. They are fully compliant with the requirements for both IEEE 1528 and FCC Supplement C. Both the left and right SAM phantoms are interchangeable, transparent and include the IEEE 1528 grid with visible NF and MB lines.



### 3.8.1 APREL Laboratories Universal Phantom

The Universal Phantom is used on the ALSAS-10U as a system validation phantom. The Universal Phantom has been fully validated both experimentally from 800MHz to 6GHz and numerically using XFDTD numerical software. The shell thickness is 2mm overall, with a 4mm spacer located at the NF/MB intersection providing an overall thickness of 6mm in line with the requirements of IEEE-1528. The design allows for fast and accurate measurements, of handsets, by allowing the conservative SAR to be evaluated at on frequency for both left and right head experiments in one measurement.



## 4. Tissue Simulating Liquid

### 4.1 The composition of the tissue simulating liquid

INGREDIENT (% Weight)	2450MHz Head	2450MHz Body	5800MHz -Head	5800MHz -Body
<b>Water</b>	46.7	73.2	-	-
<b>Salt</b>	0.00	0.04	-	-
<b>Sugar</b>	0.00	0.00	-	-
<b>HEC</b>	0.00	0.00	-	-
<b>Preventol</b>	0.00	0.00	-	-
<b>DGBE</b>	53.3	26.7	-	-

### 4.2 Tissue Calibration Result

The dielectric parameters of the liquids were verified prior to the SAR evaluation using Agilent Dielectric Probe Kit and Agilent E5071B Vector Network Analyzer

<b>Head Tissue Simulant Measurement</b>				
Frequency [MHz]	Description	Dielectric Parameters		Tissue Temp. [°C]
		$\epsilon_r$	$\sigma$ [s/m]	
2450MHz	Reference result ± 5% window	39.2 37.24 to 41.16	1.8 1.71 to 1.89	N/A
	29-Aug-2005	38.7	1.85	21.4

<b>Body Tissue Simulant Measurement</b>				
Frequency [MHz]	Description/ Calibration date	Dielectric Parameters		Tissue Temp. [°C]
		$\epsilon_r$	$\sigma$ [s/m]	
2450MHz	Reference result ± 5% window	52.7 50.065 to 55.335	1.95 1.8525 to 2.0475	N/A
	29-Aug-2005	53.8	1.91	21.4
2412 MHz	Low channel	54.6	1.87	21.4
2437 MHz	Mid channel	54.1	1.89	21.4
2462 MHz	High channel	53.4	1.96	21.4

5GHz Tissue Simulant Measurement

<b>Head Tissue Simulant Measurement ( Aug. 30, 2005) for 5200MHz SAR</b>						
Frequency [MHz]	Description/ Calibration date	Standard Value		Measurement Value		Tissue Temp. [°C]
		$\epsilon_r$	$\sigma$ [s/m]	$\epsilon_r$	$\sigma$ [s/m]	
5200MHz	08/30/2005	-	-	37.85	4.892	21.9
5800MHz	08/30/2005	35.3	5.27	36.98	5.477	21.1

<b>Head Tissue Simulant Measurement ( Sep 2, 2005) for 5800MHz SAR</b>						
Frequency [MHz]	Description/ Calibration date	Standard Value		Measurement Value		Tissue Temp. [°C]
		$\epsilon_r$	$\sigma$ [s/m]	$\epsilon_r$	$\sigma$ [s/m]	
5800MHz	09/02/2005	35.3	5.27	36.90	5.491	21.1

<b>Body Tissue Simulant Measurement ( Aug. 30, 2005) for 5200MHz SAR</b>						
Frequency [MHz]	Description	Standard Value		Measurement Value		Tissue Temp. [°C]
		$\epsilon_r$	$\sigma$ [s/m]	$\epsilon_r$	$\sigma$ [s/m]	
5150MHz	08/30/2005	-	-	52.05	5.346	21.9
5200MHz	08/30/2005	-	-	51.83	5.401	21.9
5250MHz	08/30/2005	-	-	51.67	5.475	21.9
5300MHz	08/30/2005	-	-	51.45	5.518	21.9
5350MHz	08/30/2005	-	-	51.26	5.572	21.9
5800MHz	08/30/2005	48.2	6.00	50.23	6.285	21.9
5850MHz	08/30/2005	-	-	50.10	6.364	21.9

<b>Body Tissue Simulant Measurement ( Sep. 2, 2005) for 5800MHz SAR</b>						
Frequency [MHz]	Description	Standard Value		Measurement Value		Tissue Temp. [°C]
		$\epsilon_r$	$\sigma$ [s/m]	$\epsilon_r$	$\sigma$ [s/m]	
5700MHz	09/02/2005	-	-	50.61	6.115	21.1
5750MHz	09/02/2005	-	-	50.48	6.143	21.1
5800MHz	09/02/2005	48.2	6.00	50.27	6.261	21.1
5850MHz	09/02/2005	-	-	50.15	6.332	21.1



### 4.3 Tissue Dielectric Parameters for Head and Body Phantoms

The head tissue dielectric parameters recommended by the IEEE SCC-34/SC-2 in P1528 have been incorporated in the following table. These head parameters are derived from planar layer models simulating the highest expected SAR for the dielectric properties and tissue thickness variations in a human head. Other head and body tissue parameters that have not been specified in P1528 are derived from the tissue dielectric parameters computed from the 4-Cole-Cole equations described in Reference [12] and extrapolated according to the head parameters specified in P1528.

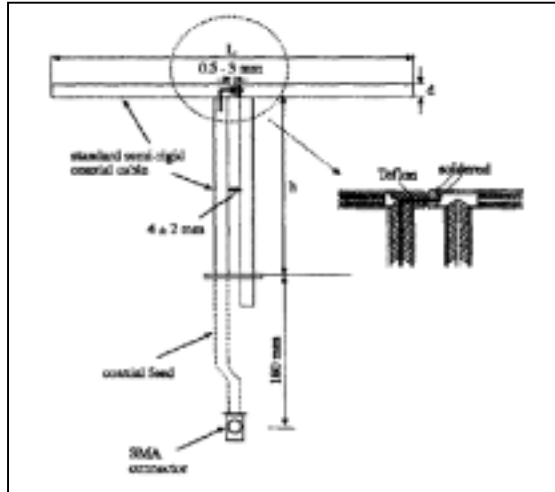
Target Frequency (MHz)	Head		Body	
	$\epsilon_r$	$\sigma$ (S/m)	$\epsilon_r$	$\sigma$ (S/m)
150	52.3	0.76	61.9	0.80
300	45.3	0.87	58.2	0.92
450	43.5	0.87	56.7	0.94
835	41.5	0.90	55.2	0.97
900	41.5	0.97	55.0	1.05
915	41.5	0.98	55.0	1.06
1450	40.5	1.20	54.0	1.30
1610	40.3	1.29	53.8	1.40
1800 – 2000	40.0	1.40	53.3	1.52
2450	39.2	1.80	52.7	1.95
3000	38.5	2.40	52.0	2.73
5800	35.3	5.27	48.2	6.00

( $\epsilon_r$  = relative permittivity,  $\sigma$  = conductivity and  $\rho = 1000 \text{ kg/m}^3$ )

## 5. SAR Measurement Procedure

### 5.1 SAR System Validation

#### 5.1.1 Validation Dipoles



The dipoles used is based on the IEEE-1528 standard, and is complied with mechanical and electrical specifications in line with the requirements of both IEEE and FCC Supplement C. the table below provides details for the mechanical and electrical specifications for the dipoles.

Frequency	L (mm)	h (mm)	d (mm)
2450MHz	53.5	30.4	3.6
5200MHz	23.6	14.0	3.6
5800MHz	21.6	12.6	3.6

#### 5.1.2 Validation Result

System Performance Check at 2450MHz				
Validation Kit: ASL-D-2450-S-2				
Frequency [MHz]	Description	SAR [w/kg] 1g	SAR [w/kg] 10g	Tissue Temp. [°C]
2450 MHz	Reference result ± 5% window	52.4 49.78 to 55.02	24 22.8 to 25.2	N/A
	08/29/2005	53.599	23.985	21.4
Note: All SAR values are 1W forward power.				

<b>System Performance Check at 5200MHz</b>				
<b>Validation Kit: ASL-D-5200-S-2</b>				
Frequency [MHz]	Description	SAR [w/kg] 1g	SAR [w/kg] 10g	Tissue Temp. [°C]
5200 MHz	Reference result ± 10% window	62.9 56.61 to 69.19	17.9 16.11 to 19.69	N/A
	08/30/2005	64.541	19.132	21.9
Note: All SAR values are 1W forward power.				

<b>System Performance Check at 5800MHz</b>				
<b>Validation Kit: ASL-D-5800-S-2</b>				
Frequency [MHz]	Description	SAR [w/kg] 1g	SAR [w/kg] 10g	Tissue Temp. [°C]
5800 MHz	Reference result ± 10% window	58.3 52.47 to 64.13	18 16.2 to 19.8	N/A
	30-Aug-2005	57.249	17.737	21.1
Note: All SAR values are 1W forward power.				

## 5.2 SAR Measurement Procedure

The ALSAS-10U calculates SAR using the following equation,

$$SAR = \frac{\sigma |E|^2}{\rho}$$

$\sigma$ : represents the simulated tissue conductivity

$\rho$ : represents the tissue density

The EUT is set to transmit at the required power in line with product specification, at each frequency relating to the LOW, MID, and HIGH channel settings.

Pre-scans are made on the device to establish the location for the transmitting antenna, using a large area scan in either air or tissue simulation fluid.

The EUT is placed against the Universal Phantom where the maximum area scan dimensions are larger than the physical size of the resonating antenna. When the scan size is not large enough to cover the peak SAR distribution, it is modified by either extending the area scan size in both the X and Y directions, or the device is shifted within the predefined area.

The area scan is then run to establish the peak SAR location (interpolated resolution set at 1mm<sup>2</sup>) which is then used to orient the center of the zoom scan. The zoom scan is then executed and the 1g and 10g averages are derived from the zoom scan volume (interpolated resolution set at 1mm<sup>3</sup>).

## 6. SAR Exposure Limits

SAR assessments have been made in line with the requirements of IEEE-1528, FCC Supplement C, and comply with ANSI/IEEE C95.1-1992 “Uncontrolled Environments” limits. These limits apply to a location which is deemed as “Uncontrolled Environment” which can be described as a situation where the general public may be exposed to an RF source with no prior knowledge or control over their exposure.

### Limits for General Population/Uncontrolled Exposure (W/kg)

Type Exposure	Uncontrolled Environment Limit
Spatial Peak SAR (1g cube tissue for brain or body)	<b>1.60 W/kg</b>
Spatial Average SAR (whole body)	<b>0.08 W/kg</b>
Spatial Peak SAR (10g for hands, feet, ankles and wrist)	<b>4.00 W/kg</b>

## 7. Test Equipment List

Instrument	Manufact-urer	Model No.	Serial No.	Last Calibration
Data Acquisition Package	Aprel	ALS-DAQ-PAQ-2	110-00203	24 Mar. 2005
Aprel Laboratories Probe	Aprel	ALS-E020	266	24 Mar. 2005
Aprel Reference Dipole 2450MHz	Aprel	ALS-D-2450-S-2	220-00753	4 Mar. 2005
Aprel Reference Dipole 5200MHz	Aprel	ALS-D-5200-S-2	230-00802	4 Mar. 2005
Aprel Reference Dipole 5800MHz	Aprel	ALS-D-5800-S-2	240-00852	4 Mar. 2005
Boundary Detection Sensor System	Aprel	ALS-PMDPS-2	120-00253	N/A
Universal Work Station	Aprel	ALS-UWS	100-00153	N/A
Device Holder 2.0	Aprel	ALS-H-E-SET-2	170-00503	N/A
Left Ear SAM Phantom	Aprel	ALS-P-SAM-L	130-00305	N/A
Right Ear SAM Phantom	Aprel	ALS-P-SAM-R	140-00355	N/A
Universal Phantom	Aprel	ALS-P-UP-1	150-00405	N/A
Aprel Dipole Spacer	Aprel	ALS-DS-U	250-00903	N/A
SAR Software	Aprel	ALSAS-10U Ver.2.2.0	B0D5F-112FE	N/A
CRS C500C Controller	Thermo	ALS-C500	RCF0440278	N/A
CRF F3 Robot	Thermo	ALS-F3	RAF0440252	N/A
Power Amplifier	Mini-Circuit	ZVE-8G	D030305	N/A
Vector Network Analyzer	Agilent	E5071B	MY42402726	5 Aug. 2005
Dielectric Probe Kit	Aglient	85070E	MY44300124	N/A
Signal Generator	Anritsu	MG3692A	020311	15 Feb. 2005
Power Meter	Agilent	438A	3513U06187	14 Feb. 2005
Power Sensor	Agilent	84815A	3318A01828	15 Feb. 2005

*Note: All equipment upon which need to be calibrated are with calibration period of 1 year.*

## 8. Measurement Uncertainty

### Exposure Assessment Measurement Uncertainty

Source of Uncertainty	Tolerance Value	Probability Distribution	Divisor	$c_i^1$ (1-g)	$c_i^1$ (10-g)	Standard Uncertainty (1-g) %	Standard Uncertainty (10-g) %
Measurement System							
Probe Calibration	3.5	normal	1	1	1	3.5	3.5
Axial Isotropy	3.7	rectangular	$\sqrt{3}$	$(1-cp)^{1/2}$	$(1-cp)^{1/2}$	1.5	1.5
Hemispherical Isotropy	10.9	rectangular	$\sqrt{3}$	$\sqrt{cp}$	$\sqrt{cp}$	4.4	4.4
Boundary Effect	1.0	rectangular	$\sqrt{3}$	1	1	0.6	0.6
Linearity	4.7	rectangular	$\sqrt{3}$	1	1	2.7	2.7
Detection Limit	1.0	rectangular	$\sqrt{3}$	1	1	0.6	0.6
Readout Electronics	1.0	normal	1	1	1	1.0	1.0
Response Time	0.8	rectangular	$\sqrt{3}$	1	1	0.5	0.5
Integration Time	1.7	rectangular	$\sqrt{3}$	1	1	1.0	1.0
RF Ambient Condition	3.0	rectangular	$\sqrt{3}$	1	1	1.7	1.7
Probe Positioner Mech.	0.4	rectangular	$\sqrt{3}$	1	1	0.2	0.2
Restriction							
Probe Positioning with respect to Phantom Shell	2.9	rectangular	$\sqrt{3}$	1	1	1.7	1.7
Extrapolation and Integration	3.7	rectangular	$\sqrt{3}$	1	1	2.1	2.1
Test Sample Positioning	4.0	normal	1	1	1	4.0	4.0
Device Holder Uncertainty	2.0	normal	1	1	1	2.0	2.0
Drift of Output Power	4.7	rectangular	$\sqrt{3}$	1	1	2.7	2.7
Phantom and Setup							
Phantom Uncertainty(shape & thickness tolerance)	3.4	rectangular	$\sqrt{3}$	1	1	2.0	2.0
Liquid Conductivity(target)	5.0	rectangular	$\sqrt{3}$	0.7	0.5	2.0	1.4
Liquid Conductivity(meas.)	4.5	normal	1	0.7	0.5	3.1	2.2
Liquid Permittivity(target)	5.0	rectangular	$\sqrt{3}$	0.6	0.5	1.7	1.4
Liquid Permittivity(meas.)	4.5	normal	1	0.6	0.5	2.7	2.2
Combined Uncertainty		RSS				10.8	10.3
Combined Uncertainty (coverage factor=2)		Normal(k=2)				21.5	20.6

## 9. Test Result Summary

### 9.1 802.11b Test Result

SAR Measurement						
<i>Ambient Temperature (°C) : 22 ±1</i>				<i>Relative Humidity (%) : 53</i>		
<i>Liquid Temperature (°C) : 21.5±1</i>				<i>Depth of Liquid (cm) : &gt;15</i>		
Product :						
Test Mode : 802.11b ( Right Antenna)						
Test Position of EUT	Antenna Type	Frequency		Conducted power (dBm)	SAR 1g (W/Kg)	Limit (W/Kg)
		Channel	MHz			
Bottom	Internal	Low	2412	17.71	<b>0.769</b>	1.6
Bottom	Internal	Mid	2437	17.21	<b>0.643</b>	1.6
Bottom	Internal	High	2462	17.70	<b>0.452</b>	1.6
Top	Internal	Mid	2437	17.21	<b>0.162</b>	1.6
Front End	Internal	Mid	2437	17.21	<b>0.224</b>	1.6
Test Mode : 802.11b ( Left Antenna)						
Bottom	Internal	Low	2412	17.71	<b>0.516</b>	1.6
Bottom	Internal	Mid	2437	17.21	<b>0.543</b>	1.6
Bottom	Internal	High	2462	17.70	<b>0.555</b>	1.6
Top	Internal	Mid	2437	17.21	<b>0.183</b>	1.6
Front End	Internal	Mid	2437	17.21	<b>0.188</b>	1.6

### 9.2 802.11g Test Result

SAR Measurement						
<i>Ambient Temperature (°C) : 22 ±1</i>				<i>Relative Humidity (%) : 53</i>		
<i>Liquid Temperature (°C) : 21.5±1</i>				<i>Depth of Liquid (cm) : &gt;15</i>		
Product :						
Test Mode : 802.11g ( Right Antenna)						
Test Position of EUT	Antenna Type	Frequency		Conducted power (dBm)	SAR 1g (W/Kg)	Limit (W/Kg)
		Channel	MHz			
Bottom	Internal	Low	2412	16.69	<b>0.489</b>	1.6
Bottom	Internal	Mid	2437	16.55	<b>0.357</b>	1.6
Bottom	Internal	High	2462	16.62	<b>0.249</b>	1.6
Top	Internal	Mid	2437	16.55	<b>0.099</b>	1.6
Front End	Internal	Mid	2437	16.55	<b>0.166</b>	1.6
Test Mode : 802.11g ( Left Antenna)						
Bottom	Internal	Low	2412	16.69	<b>0.437</b>	1.6
Bottom	Internal	Mid	2437	16.55	<b>0.425</b>	1.6
Bottom	Internal	High	2462	16.62	<b>0.397</b>	1.6
Top	Internal	Mid	2437	16.55	<b>0.108</b>	1.6
Front End	Internal	Mid	2437	16.55	<b>0.123</b>	1.6



**9.3 802.11a (5150MHz ~5350MHz, Normal Mode) Test Result**

SAR Measurement						
<i>Ambient Temperature (°C) : 22 ±1</i>				<i>Relative Humidity (%) : 53</i>		
<i>Liquid Temperature (°C) : 21.5±1</i>				<i>Depth of Liquid (cm) : &gt;15</i>		
Product :						
Test Mode : 802.11a (5150MHz ~5350MHz, Normal Mode) Right Antenna						
Test Position of EUT	Antenna Type	Frequency		Conducted power (dBm)	SAR 1g (W/Kg)	Limit (W/Kg)
		Channel	MHz			
Bottom	Internal	Low	5180	15.30	0.752	1.6
Bottom	Internal	High	5240	15.07	0.715	1.6
Bottom	Internal	Low	5260	15.73	0.661	1.6
Bottom	Internal	High	5320	14.76	0.670	1.6
Top	Internal	Low	5260	15.73	0.228	1.6
Front End	Internal	Low	5260	15.73	0.463	1.6
Test Mode : 802.11a (5150MHz ~5350MHz, Normal Mode) Left Antenna						
Bottom	Internal	Low	5180	15.30	0.551	1.6
Bottom	Internal	High	5240	15.07	0.603	1.6
Bottom	Internal	Low	5260	15.73	0.504	1.6
Bottom	Internal	High	5320	14.76	0.523	1.6
Top	Internal	Low	5260	15.73	0.225	1.6
Front End	Internal	Low	5260	15.73	0.241	1.6

**9.4 802.11a (5150MHz ~5350MHz, Turbo Mode) Test Result**

SAR Measurement						
<i>Ambient Temperature (°C) : 22 ±1</i>				<i>Relative Humidity (%) : 53</i>		
<i>Liquid Temperature (°C) : 21.5±1</i>				<i>Depth of Liquid (cm) : &gt;15</i>		
Product :						
Test Mode : 802.11a (5150MHz ~5350MHz, Turbo Mode) Right Antenna						
Test Position of EUT	Antenna Type	Frequency		Conducted power (dBm)	SAR 1g (W/Kg)	Limit (W/Kg)
		Channel	MHz			
Bottom	Internal	Low	5210	15.39	0.735	1.6
Bottom	Internal	Mid.	5250	14.76	0.484	1.6
Bottom	Internal	High	5290	13.84	0.506	1.6
Top	Internal	Mid.	5250	14.76	0.220	1.6
Front End	Internal	Mid.	5250	14.76	0.402	1.6
Test Mode : 802.11a (5150MHz ~5350MHz, Turbo Mode) Left Antenna						
Bottom	Internal	Low	5210	15.39	0.534	1.6
Bottom	Internal	Mid.	5250	14.76	0.513	1.6
Bottom	Internal	High	5290	13.84	0.452	1.6
Top	Internal	Mid.	5250	14.76	0.240	1.6
Front End	Internal	Mid.	5250	14.76	0.264	1.6

**9.5 802.11a (5725MHz ~5825MHz, Normal Mode) Test Result**

SAR Measurement						
<i>Ambient Temperature (°C) : 22 ±1</i>				<i>Relative Humidity (%) : 53</i>		
<i>Liquid Temperature (°C) : 21.5±1</i>				<i>Depth of Liquid (cm) : &gt;15</i>		
Product :						
Test Mode : 802.11a (5725MHz ~5825MHz, Normal Mode) Right Antenna						
Test Position of EUT	Antenna Type	Frequency		Conducted power (dBm)	SAR 1g (W/Kg)	Limit (W/Kg)
		Channel	MHz			
Bottom	Internal	Low	5745	13.05	0.549	1.6
Bottom	Internal	Mid.	5765	13.99	0.628	1.6
Bottom	Internal	High	5805	14.07	0.554	1.6
Top	Internal	Mid,	5765	13.99	0.228	1.6
Front End	Internal	Mid.	5765	13.99	0.481	1.6
Test Mode : 802.11a (5725MHz ~5825MHz, Normal Mode) Left Antenna						
Bottom	Internal	Low	5745	13.05	0.484	1.6
Bottom	Internal	Mid.	5765	13.99	0.545	1.6
Bottom	Internal	High	5805	14.07	0.495	1.6
Top	Internal	Mid,	5765	13.99	0.275	1.6
Front End	Internal	Mid.	5765	13.99	0.493	1.6

**9.6 802.11a (5725MHz ~5825MHz, Turbo Mode) Test Result**

SAR Measurement						
<i>Ambient Temperature (°C) : 22 ±1</i>				<i>Relative Humidity (%) : 53</i>		
<i>Liquid Temperature (°C) : 21.5±1</i>				<i>Depth of Liquid (cm) : &gt;15</i>		
Product :						
Test Mode : 802.11a (5725MHz ~5825MHz, Turbo Mode) Right Antenna						
Test Position of EUT	Antenna Type	Frequency		Conducted power (dBm)	SAR 1g (W/Kg)	Limit (W/Kg)
		Channel	MHz			
Bottom	Internal	Low	5760	13.09	0.597	1.6
Bottom	Internal	High	5800	8.85	0.293	1.6
Top	Internal	Mid.	5760	13.09	0.210	1.6
Front End	Internal	Mid.	5760	13.09	0.429	1.6
Test Mode : 802.11a (5725MHz ~5825MHz, Turbo Mode) Left Antenna						
Bottom	Internal	Low	5760	13.09	0.448	1.6
Bottom	Internal	High	5800	8.85	0.239	1.6
Top	Internal	Mid.	5760	13.09	0.220	1.6
Front End	Internal	Mid.	5760	13.09	0.427	1.6

## 10. SAR System Validation Data

### 10.1 2450MHz System Validation Data

Validation date : 29-Aug-2005  
Measurement Date : 29-Aug-2005

#### Product Data

Device Name : Dipole-2450  
Serial No. : 753  
Type : Dipole  
Model : ALS-D-2450-S-2  
Frequency : 2450.00 MHz  
Max. Transmit Pwr : 1 W  
Drift Time : 0 min(s)  
Length : 52.1 mm  
Width : 3.6 mm  
Depth : 31.0 mm  
Antenna Type : Internal  
Orientation : Touch  
Power Drift-Start : 62.501 W/kg  
Power Drift-Finish : 62.319 W/kg  
Power Drift (%) : -0.292

#### Phantom Data

Name : APREL-Uni  
Type : Uni-Phantom  
Size (mm) : 280 x 280 x 200  
Serial No. : System Default  
Location : Center  
Description : uni\_1

#### Tissue Data

Type : HEAD  
Serial No. : 2450H0811  
Frequency : 2450.00 MHz  
Last Calib. Date : 29-Aug-2005  
Temperature : 21.40 °C  
Ambient Temp. : 22.30 °C  
Humidity : 53.00 RH%  
Epsilon : 38.70 F/m  
Sigma : 1.85 S/m  
Density : 1000.00 kg/cu. m

Probe Data

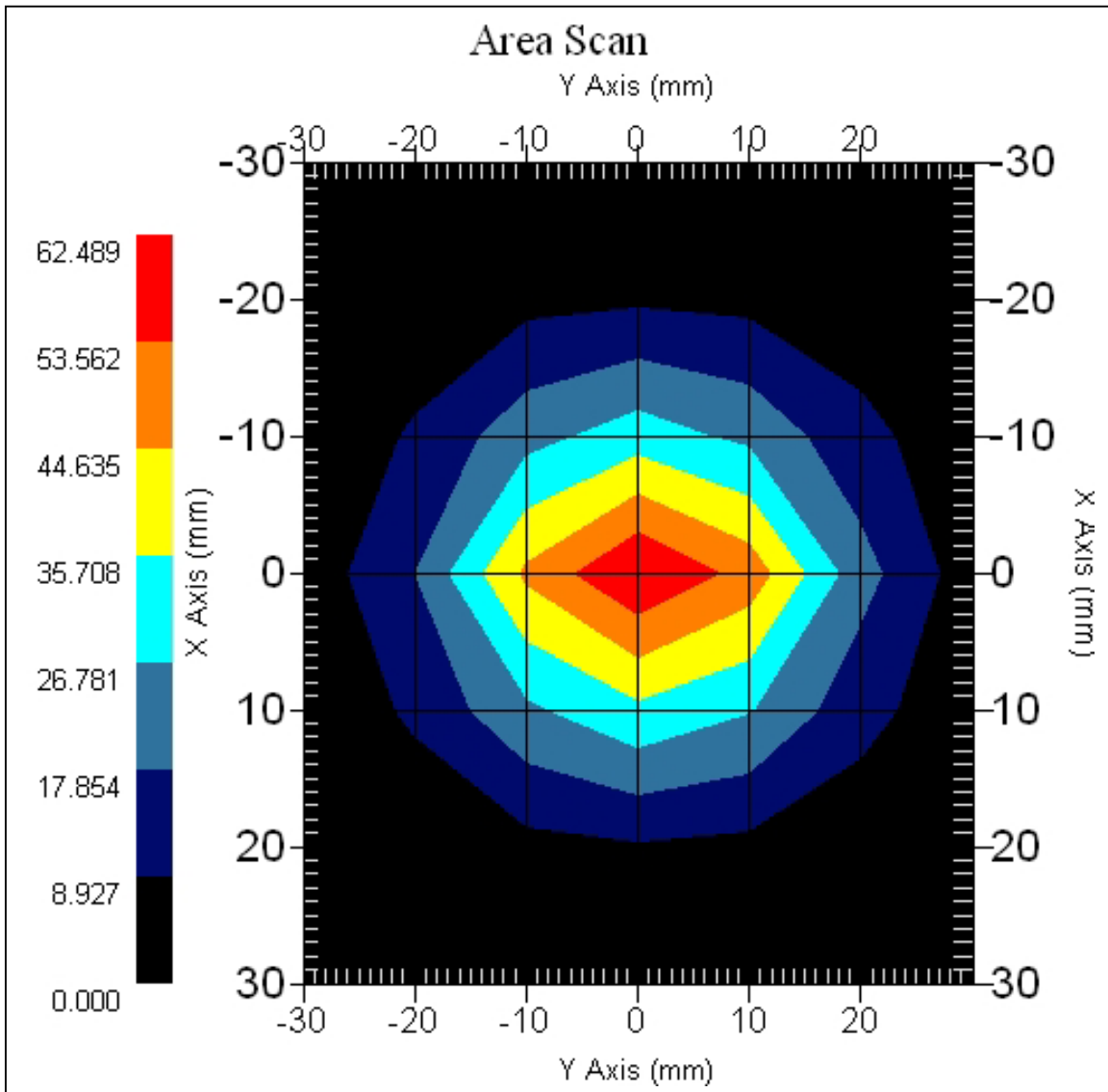
Name : E-field Probe  
Model : ALS-E-020  
Type : E-Field Triangle  
Serial No. : 266  
Last Calib. Date : 16-Mar-2005  
Frequency : 2450.00 MHz  
Duty Cycle Factor : 1  
Conversion Factor : 4.9  
Probe Sensitivity : 1.20 1.20 1.20  $\mu\text{V}/(\text{V}/\text{m})^2$   
Compression Point : 95.00 mV  
Offset : 1.56 mm

Measurement Data

Crest Factor : 1  
Tissue Temp. : 21.40 °C  
Ambient Temp. : 22.30 °C

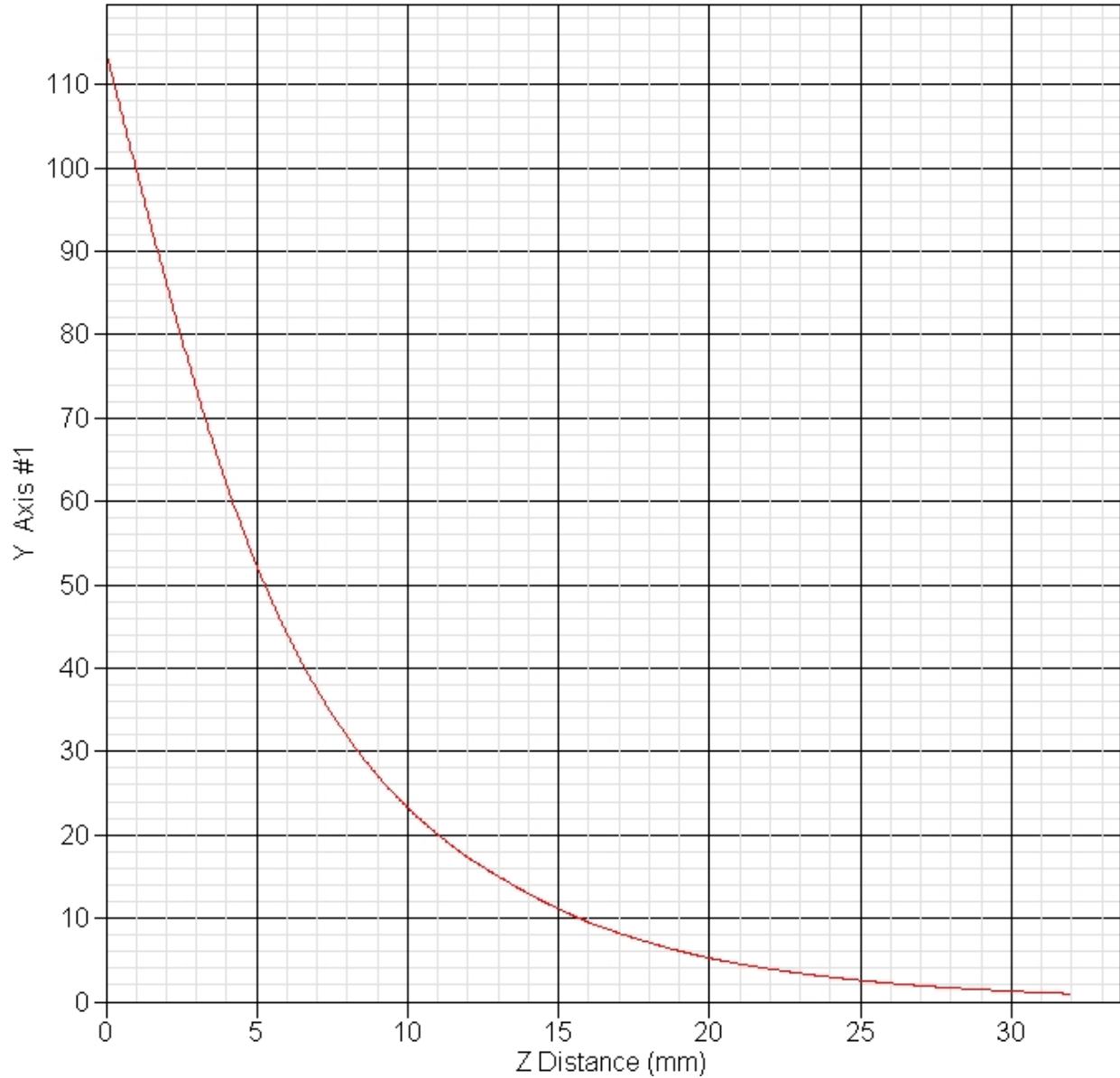
Measurement Data

Crest Factor : 1  
Set-up Date : 29-Aug-2005  
Temperature : 21.40 °C  
Ambient Temp. : 22.30 °C  
Area Scan : 7x7x1 : Measurement x=10mm, y=10mm, z=4mm  
Zoom Scan : 5x5x8 : Measurement x=8mm, y=8mm, z=4mm  
Frequency : 2450MHz



1 gram SAR value : 53.599 W/kg  
10 gram SAR value : 23.985 W/kg  
Area Scan Peak SAR : 62.487 W/kg  
Zoom Scan Peak SAR : 113.980 W/kg

SAR-Z Axis  
at Hotspot x:0.40 y:-2.30



## 10.2 5200 MHz System Validation Data

Validation date : 30-Aug-2005  
Measurement Date : 30-Aug-2005

### Product Data

Device Name : Dipole-5200  
Serial No. : 230-00802  
Type : Dipole  
Model : ALS-D-5200-S-2  
Frequency : 5200.00 MHz  
Max. Transmit Pwr : 1 W  
Drift Time : 0 min(s)  
Length : 23.4 mm  
Width : 3.6 mm  
Depth : 15.4 mm  
Antenna Type : Internal  
Orientation : Touch  
Power Drift-Start : 18.633 W/kg  
Power Drift-Finish : 18.276 W/kg  
Power Drift (%) : -1.916

### Phantom Data

Name : APREL-Uni  
Type : Uni-Phantom  
Size (mm) : 280 x 280 x 200  
Serial No. : System Default  
Location : Center  
Description : uni\_1

### Tissue Data

Type : HEAD  
Serial No. : 5200-H-AU-18  
Frequency : 5200.00 MHz  
Last Calib. Date : 30-Aug-2005  
Temperature : 21.90 °C  
Ambient Temp. : 22.80 °C  
Humidity : 58.00 RH%  
Epsilon : 37.85 F/m  
Sigma : 4.892 S/m  
Density : 1000.00 kg/cu. m

### Probe Data

Name : E-field Probe  
Model : ALS-E-020  
Type : E-Field Triangle  
Serial No. : 266  
Last Calib. Date : 16-Mar-2005  
Frequency : 5200.00 MHz

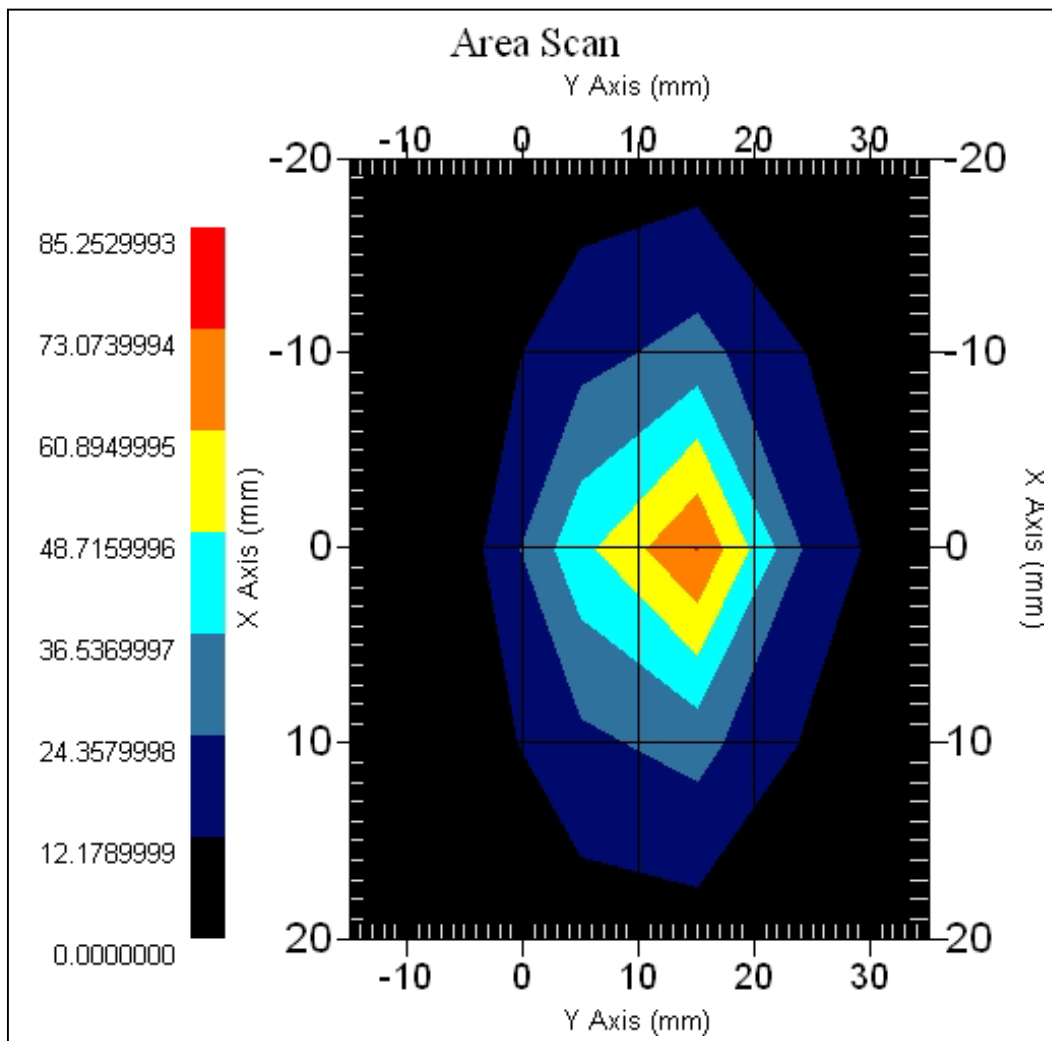
**International Standards Laboratory**

**Report Number: ISL-05LR025SAR-F-1**

Duty Cycle Factor : 1  
Conversion Factor : 3.8  
Probe Sensitivity : 1.20 1.20 1.20  $\mu\text{V}/(\text{V}/\text{m})^2$   
Compression Point : 95.00 mV  
Offset : 1.56 mm

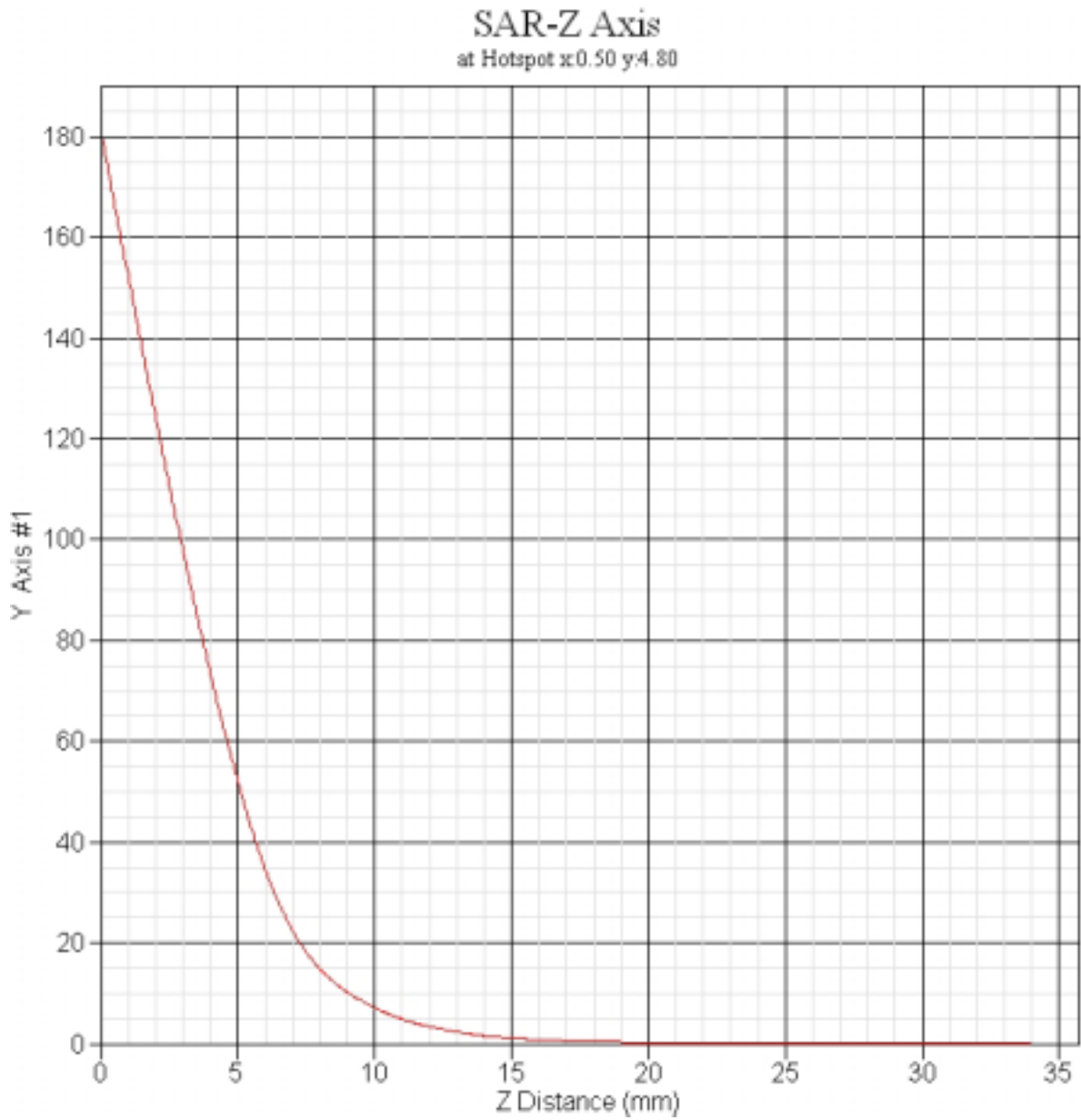
Measurement Data

Crest Factor : 1  
Tissue Temp. : 21.90 °C  
Ambient Temp. : 22.80 °C  
Area Scan : 5x6x1 : Measurement x=10mm, y=10mm, z=4mm  
Zoom Scan : 9x9x13 : Measurement x=4mm, y=4mm, z=2.5mm  
Frequency : 5200MHz





1 gram SAR value : 64.541 W/kg  
10 gram SAR value : 19.132 W/kg  
Area Scan Peak SAR : 73.075 W/kg  
Zoom Scan Peak SAR : 181.147 W/kg



### 10.3 5800 MHz System Validation Data

Validation date : 2-Sep-2005  
Measurement Date : 2-Sep-2005

#### Product Data

Device Name : Dipole-5800  
Serial No. : 240-00852  
Type : Dipole  
Model : ALS-D-5800-S-2  
Frequency : 5800.00 MHz  
Max. Transmit Pwr : 1 W  
Drift Time : 0 min(s)  
Length : 21.4 mm  
Width : 3.6 mm  
Depth : 14.7 mm  
Antenna Type : Internal  
Orientation : Touch  
Power Drift-Start : 16.488 W/kg  
Power Drift-Finish: 16.004 W/kg  
Power Drift (%) : -2.933  
Picture :

#### Phantom Data

Name : APREL-Uni  
Type : Uni-Phantom  
Size (mm) : 280 x 280 x 200  
Serial No. : System Default  
Location : Center  
Description : uni\_1

#### Tissue Data

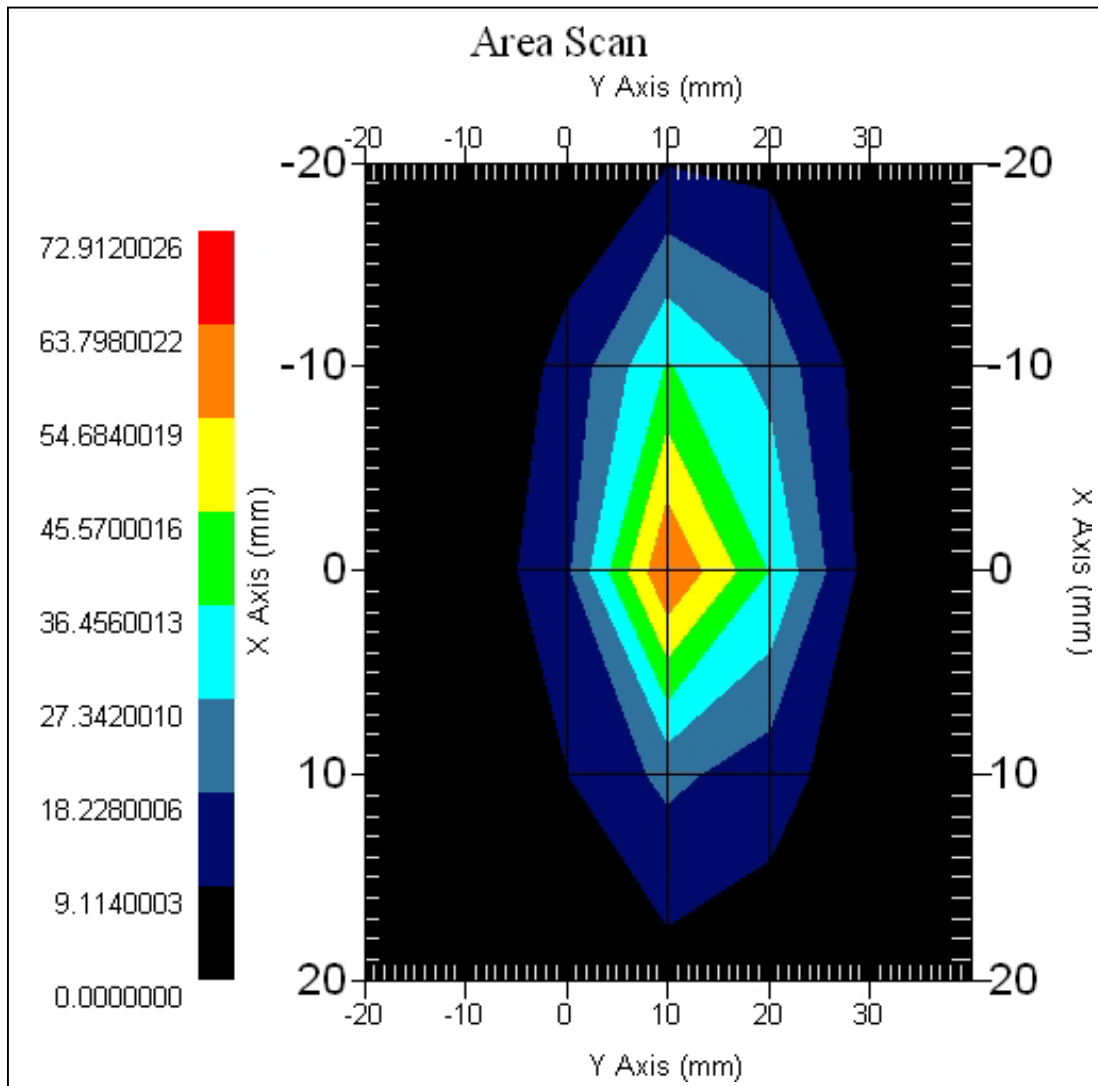
Type : HEAD  
Serial No. : 5800-H-AU-19  
Frequency : 5800.00 MHz  
Last Calib. Date : 02-Sep-2005  
Temperature : 21.10 °C  
Ambient Temp. : 21.90 °C  
Humidity : 51.00 RH%  
Epsilon : 36.90 F/m  
Sigma : 5.491 S/m  
Density : 1000.00 kg/cu. m

#### Probe Data

Name : E-field Probe  
Model : ALS-E-020  
Type : E-Field Triangle  
Serial No. : 266  
Last Calib. Date : 16-Mar-2005  
Frequency : 5800.00 MHz  
Duty Cycle Factor: 1  
Conversion Factor: 3.7  
Probe Sensitivity: 1.20 1.20 1.20  $\mu\text{V}/(\text{V}/\text{m})^2$   
Compression Point: 95.00 mV  
Offset : 1.56 mm

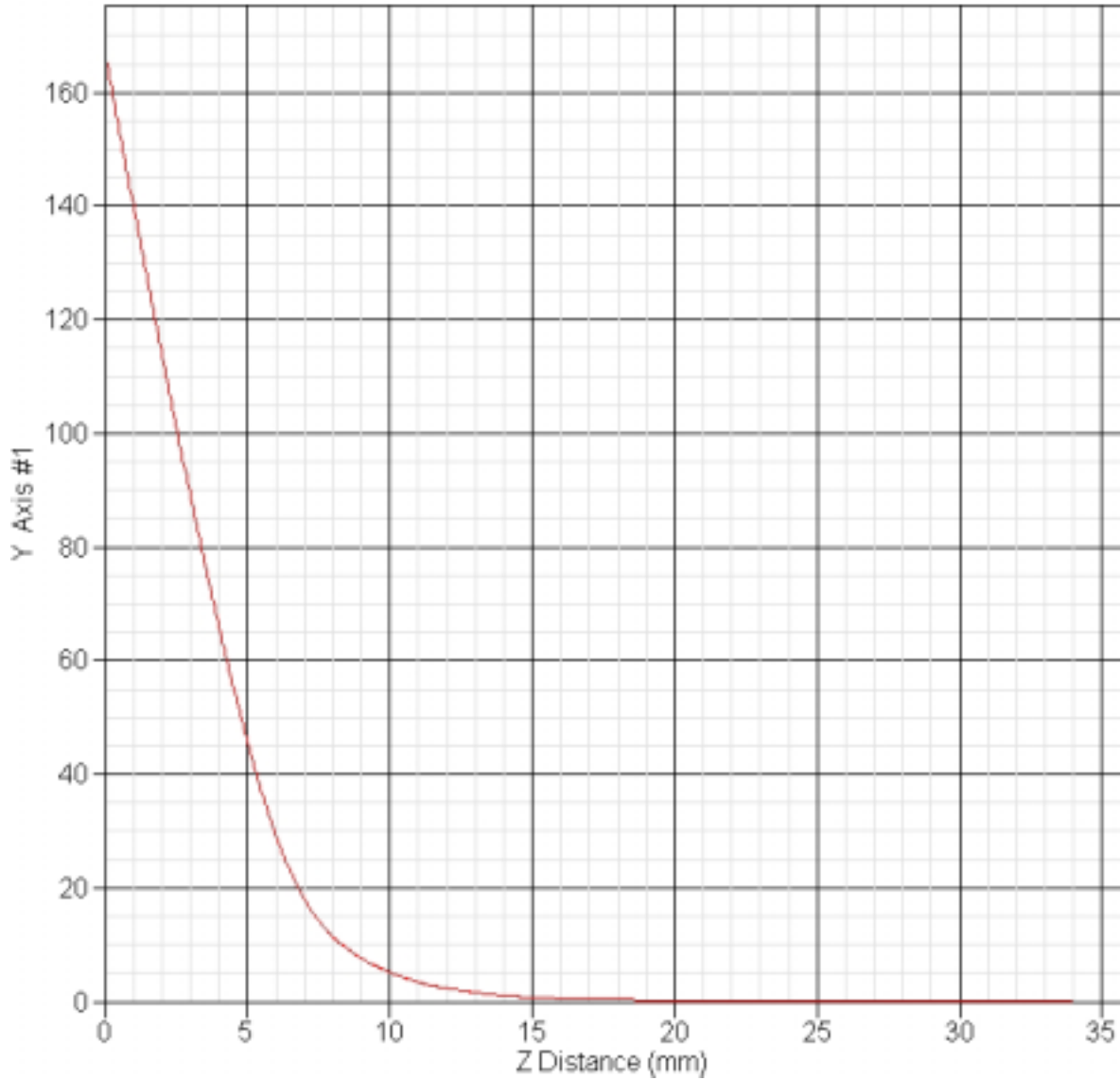
Measurement Data

Crest Factor : 1  
Tissue Temp. : 21.10 °C  
Ambient Temp. : 21.90 °C  
Area Scan : 5x7x1 : Measurement x=10mm, y=10mm, z=4mm  
Zoom Scan : 9x9x13 : Measurement x=4mm, y=4mm, z=2.5mm  
Frequency : 5800MHz



1 gram SAR value : 57.249 W/kg  
10 gram SAR value : 17.737 W/kg  
Area Scan Peak SAR : 63.800 W/kg  
Zoom Scan Peak SAR : 167.134 W/kg

SAR-Z Axis  
at Hotspot x:0.30 y:7.70



## 11. 2450MHz SAR measurement Data

### ALSAS-10U Ver 2.2.0 SAR Test Report

Validation date : 29-Aug-2005  
Measurement Date : 29-Aug-2005

#### Product Data

Device Name : PCMCIA CARDBUS  
Model : CB9  
Frequency : 2450 MHz  
Drift Time : 0 min(s)  
Length : 118 mm  
Width : 54 mm  
Depth : 8.8 mm  
Antenna Type : Internal

#### Phantom Data

Name : APREL-Uni  
Type : Uni-Phantom  
Size (mm) : 280 x 280 x 200  
Location : Center

#### Tissue Data

Type : BODY  
Serial No. : 2450B080F  
Frequency : 2450.00 MHz  
Last Calib. Date : 29-Aug-2005  
Temperature : 21.40 °C  
Ambient Temp. : 22.30 °C  
Humidity : 53.00 RH%  
Epsilon : 53.80 F/m  
Sigma : 1.91 S/m  
Density : 1000.00 kg/cu. m

#### Probe Data

Name : E-field Probe  
Model : ALS-E-020  
Type : E-Field Triangle  
Serial No. : 266  
Last Calib. Date : 16-Mar-2005  
Frequency : 2450.00 MHz  
Duty Cycle Factor: 1  
Conversion Factor: 5  
Probe Sensitivity: 1.20 1.20 1.20  $\mu\text{V}/(\text{V}/\text{m})^2$   
Compression Point: 95.00 mV  
Offset : 1.56 mm

## 11.1 802.11b, Right Antenna

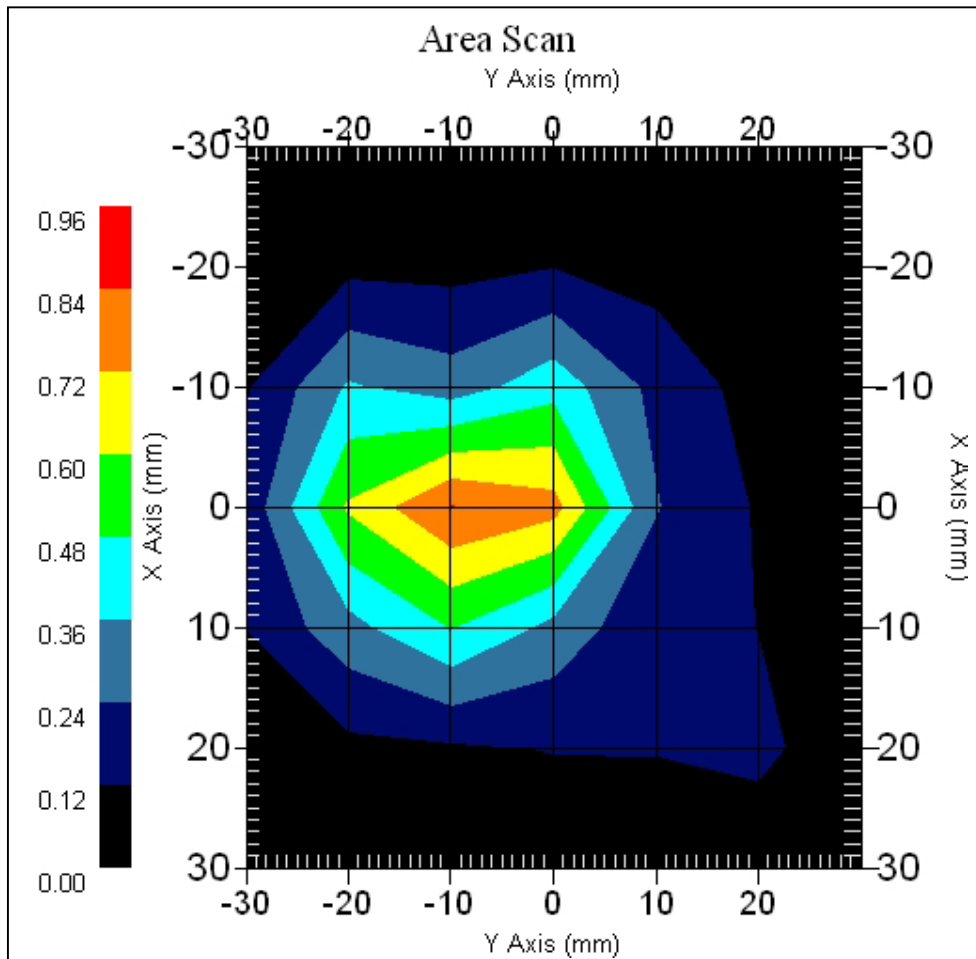
### 11.1.1 2412MHz, EUT Position: Bottom

Measurement Data

802.11b 2412MHz, Right Antenna

DUT Position : Bottom  
Channel : Low - 1  
Crest Factor : 1  
Tissue Temp. : 21.40 °C  
Ambient Temp. : 22.30 °C  
Area Scan : 7x7x1 : Measurement x=10mm, y=10mm, z=4mm  
Zoom Scan : 7x7x7 : Measurement x=5mm, y=5mm, z=5mm

Power Drift-Start : 0.660 W/kg  
Power Drift-Finish : 0.670 W/kg  
Power Drift (%) : 1.515



1 gram SAR value : 0.769 W/kg  
10 gram SAR value : 0.361 W/kg  
Area Scan Peak SAR : 0.843 W/kg  
Zoom Scan Peak SAR : 1.511 W/kg

### 11.1.2 2437MHz, EUT Position: Bottom

#### Measurement Data

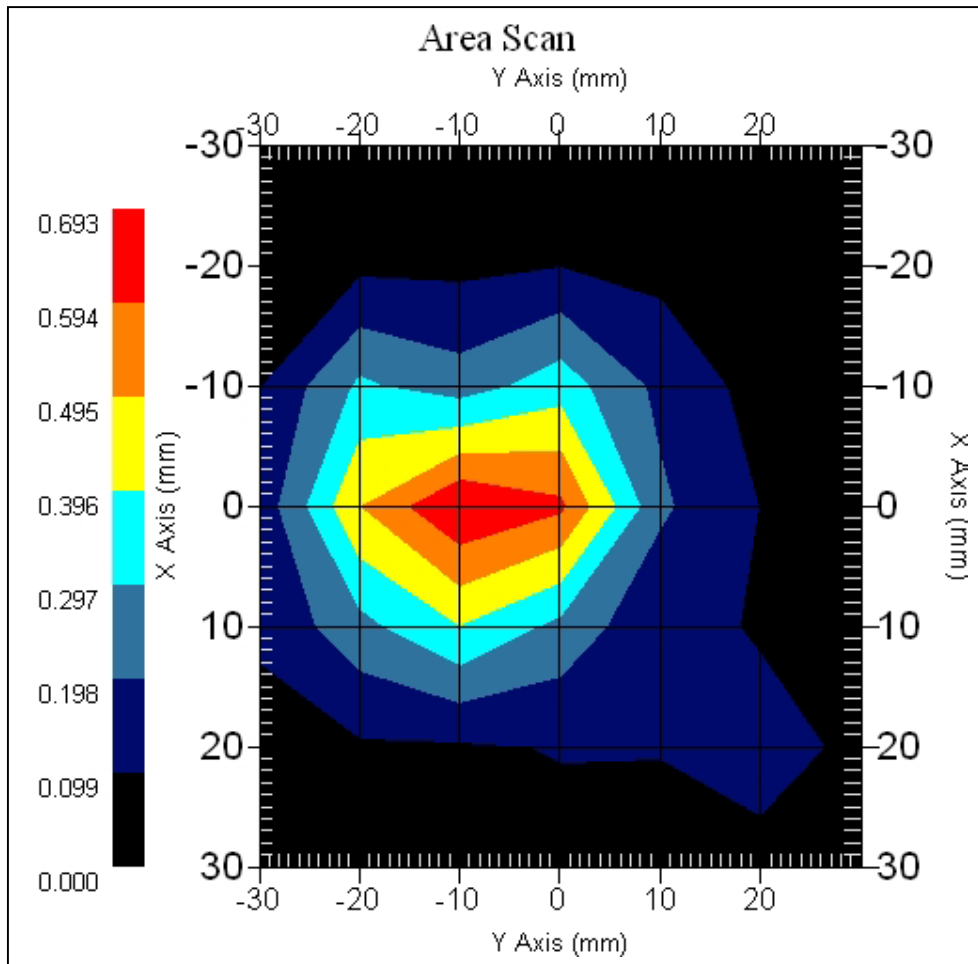
802.11b 2437MHz, Right Antenna

DUT Position : Bottom  
Channel : Mid - 6  
Crest Factor : 1  
Tissue Temp. : 21.40 °C  
Ambient Temp. : 22.30 °C  
Area Scan : 7x7x1 : Measurement x=10mm, y=10mm, z=4mm  
Zoom Scan : 7x7x7 : Measurement x=5mm, y=5mm, z=5mm

Power Drift-Start : 0.617 W/kg

Power Drift-Finish: 0.624 W/kg

Power Drift (%) : 0.999



1 gram SAR value : 0.634 W/kg

10 gram SAR value : 0.297 W/kg

Area Scan Peak SAR : 0.690 W/kg

Zoom Scan Peak SAR : 1.211 W/kg

### 11.1.3 2462MHz, EUT Position: Bottom

#### Measurement Data

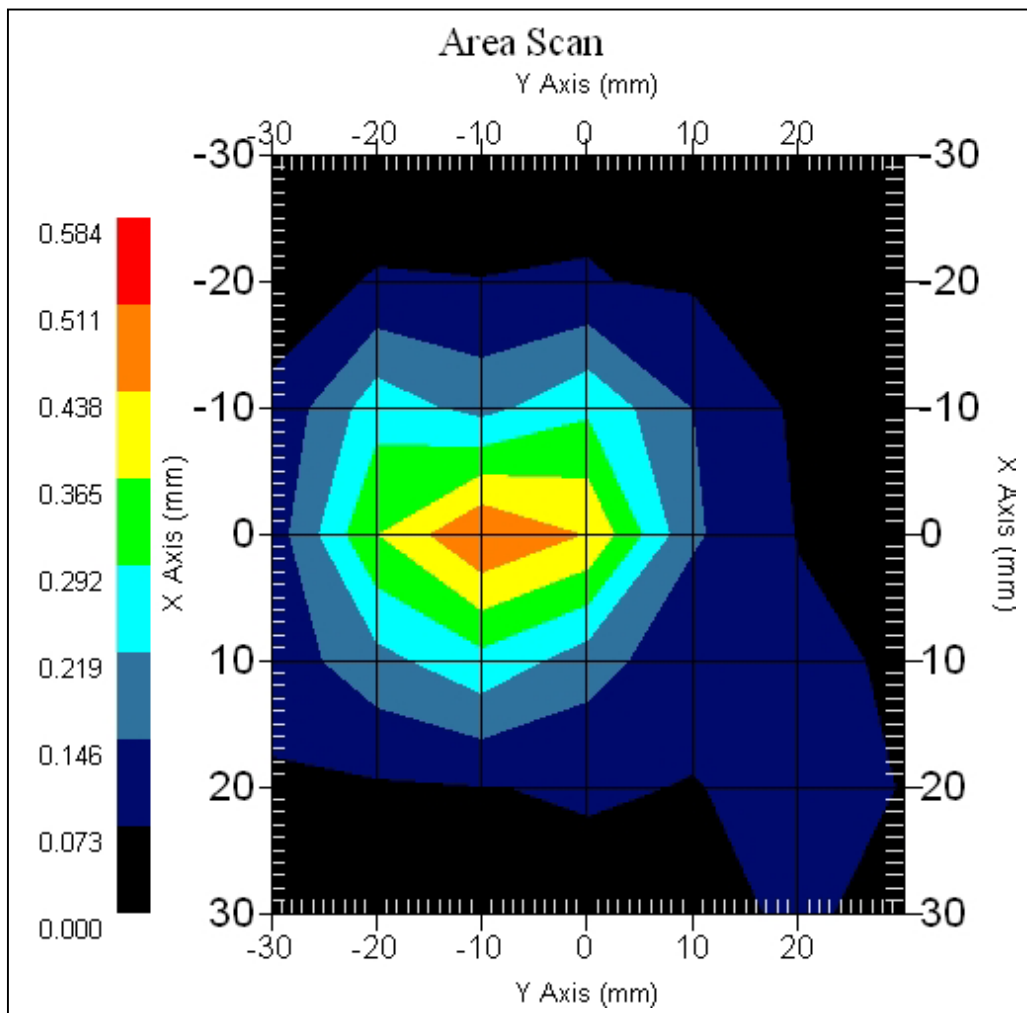
802.11b 2462MHz, Right Antenna

DUT Position : Bottom  
Channel : High - 11  
Crest Factor : 1  
Tissue Temp. : 21.40 °C  
Ambient Temp. : 22.30 °C  
Area Scan : 7x7x1 : Measurement x=10mm, y=10mm, z=4mm  
Zoom Scan : 7x7x7 : Measurement x=5mm, y=5mm, z=5mm

Power Drift-Start : 0.439 W/kg

Power Drift-Finish: 0.425 W/kg

Power Drift (%) : -3.189



1 gram SAR value : 0.452 W/kg

10 gram SAR value : 0.213 W/kg

Area Scan Peak SAR : 0.512 W/kg

Zoom Scan Peak SAR : 0.920 W/kg



### 11.1.4 2437MHz, EUT Position: Top

#### Measurement Data

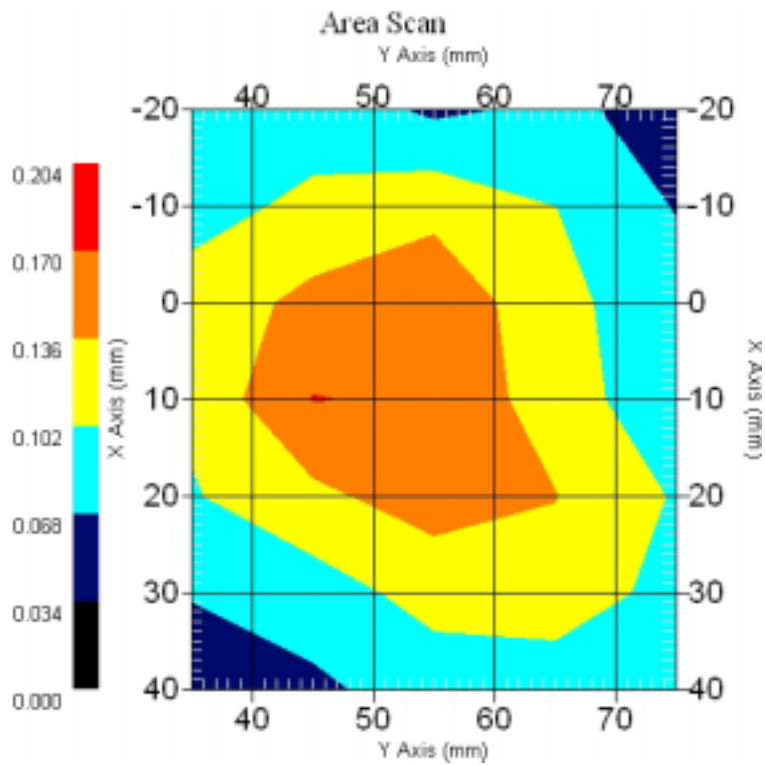
802.11b 2437MHz, Right Antenna

DUT Position : Top  
Channel : Mid – 6  
Crest Factor : 1  
Tissue Temp. : 21.40 °C  
Ambient Temp. : 22.30 °C  
Area Scan : 7x5x1 : Measurement x=10mm, y=10mm, z=4mm  
Zoom Scan : 5x5x8 : Measurement x=8mm, y=8mm, z=4mm

Power Drift-Start : 0.065 W/kg

Power Drift-Finish: 0.067 W/kg

Power Drift (%) : 3.077



1 gram SAR value : 0.162 W/kg

10 gram SAR value : 0.107 W/kg

Area Scan Peak SAR : 0.171 W/kg

Zoom Scan Peak SAR : 0.270 W/kg

### 11.1.5 2437MHz, EUT Position: Front

#### Measurement Data

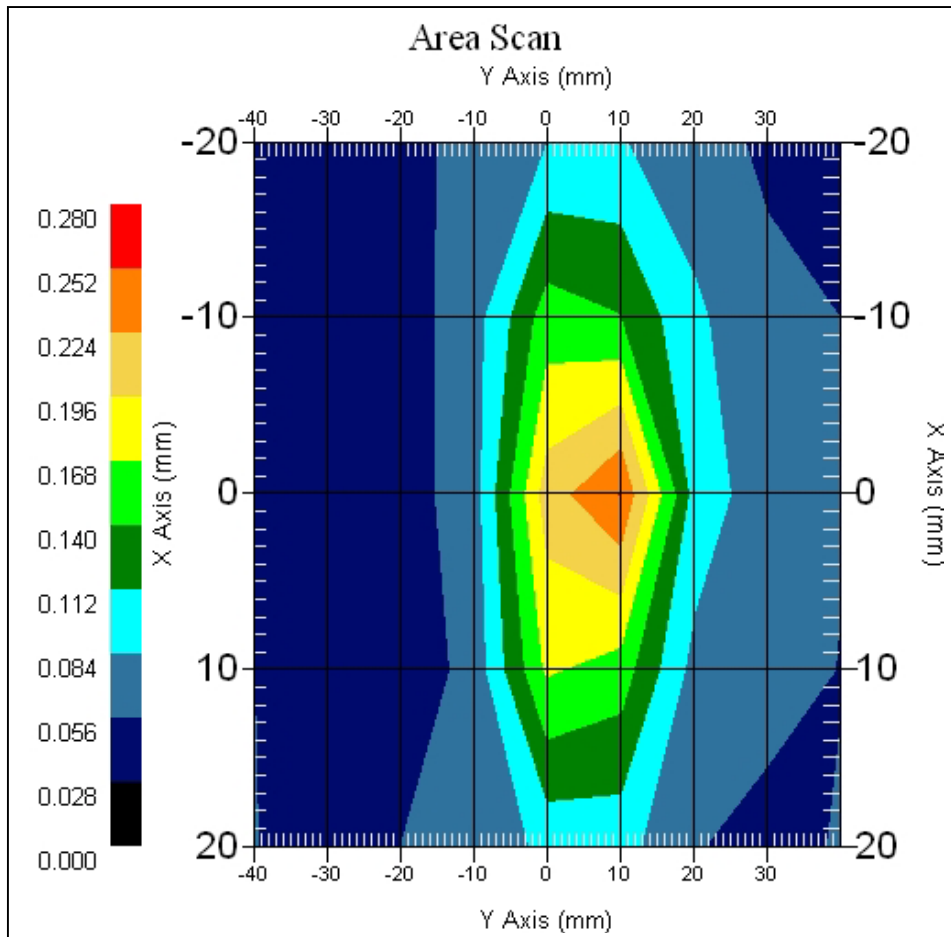
802.11b 2437MHz, Right Antenna

DUT Position : Front  
Channel : Mid – 6  
Crest Factor : 1  
Tissue Temp. : 21.40 °C  
Ambient Temp. : 22.30 °C  
Area Scan : 5x9x1 : Measurement x=10mm, y=10mm, z=4mm  
Zoom Scan : 7x7x7 : Measurement x=5mm, y=5mm, z=5mm

Power Drift-Start : 0.218 W/kg

Power Drift-Finish: 0.209 W/kg

Power Drift (%) : -4.128



1 gram SAR value : 0.244 W/kg  
10 gram SAR value : 0.124 W/kg  
Area Scan Peak SAR : 0.253 W/kg  
Zoom Scan Peak SAR : 0.480 W/kg

## 11.2 802.11b, Left Antenna

### 11.2.1 2412MHz, EUT Position: Bottom

#### Measurement Data

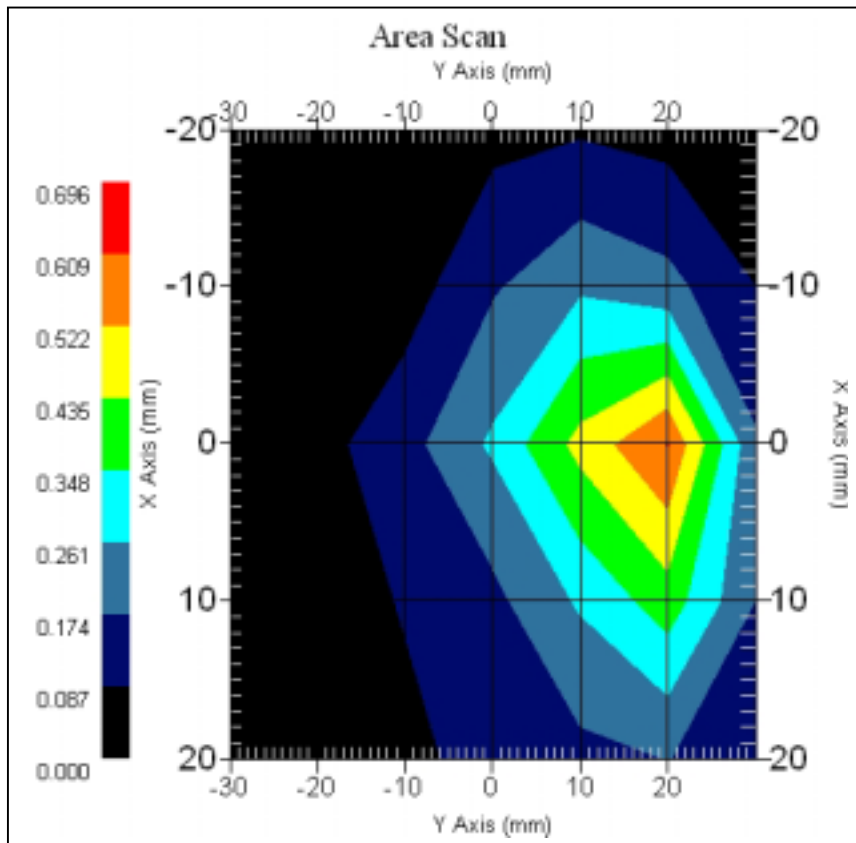
802.11b 2412MHz, Left Antenna

DUT Position : Bottom  
Channel : Low - 1  
Crest Factor : 1  
Tissue Temp. : 21.40 °C  
Ambient Temp. : 22.30 °C  
Area Scan : 5x7x1 : Measurement x=10mm, y=10mm, z=4mm  
Zoom Scan : 5x5x8 : Measurement x=8mm, y=8mm, z=4mm

Power Drift-Start : 0.276 W/kg

Power Drift-Finish: 0.282 W/kg

Power Drift (%) : 2.174



1 gram SAR value : 0.516 W/kg

10 gram SAR value : 0.242 W/kg

Area Scan Peak SAR : 0.612 W/kg

Zoom Scan Peak SAR : 1.131 W/kg

### 11.2.2 2437MHz, EUT Position: Bottom

#### Measurement Data

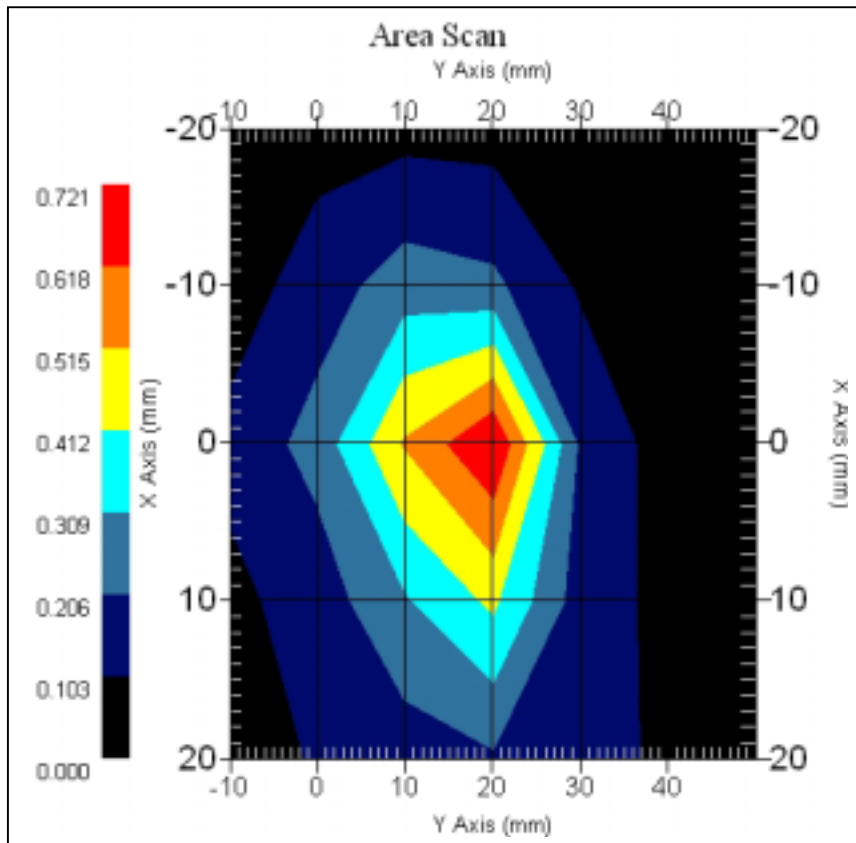
802.11b 2437MHz, Left Antenna

DUT Position : Bottom  
Channel : Mid - 6  
Crest Factor : 1  
Tissue Temp. : 21.40 °C  
Ambient Temp. : 22.30 °C  
Area Scan : 5x7x1 : Measurement x=10mm, y=10mm, z=4mm  
Zoom Scan : 5x5x8 : Measurement x=8mm, y=8mm, z=4mm

Power Drift-Start : 0.246 W/kg

Power Drift-Finish: 0.245 W/kg

Power Drift (%) : -0.407



1 gram SAR value : 0.543 W/kg

10 gram SAR value : 0.254 W/kg

Area Scan Peak SAR : 0.718 W/kg

Zoom Scan Peak SAR : 1.181 W/kg

### 11.2.3 2462MHz, EUT Position: Bottom

#### Measurement Data

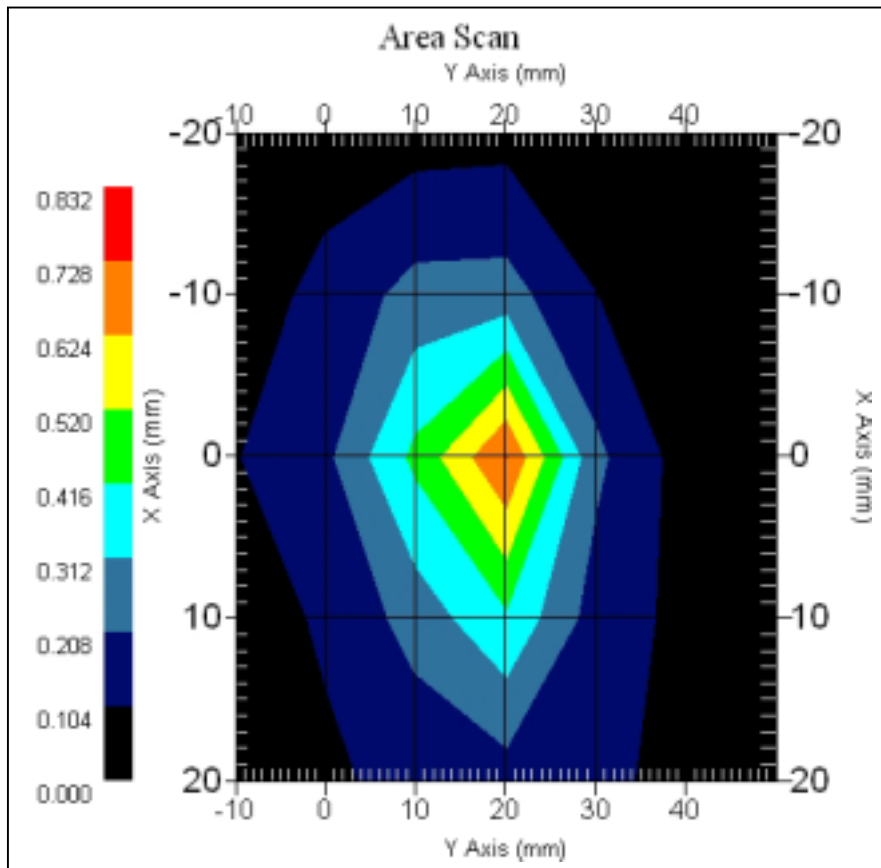
802.11b 2462MHz, Left Antenna

DUT Position : Bottom  
Channel : High - 11  
Crest Factor : 1  
Tissue Temp. : 21.40 °C  
Ambient Temp. : 22.30 °C  
Area Scan : 5x7x1 : Measurement x=10mm, y=10mm, z=4mm  
Zoom Scan : 5x5x8 : Measurement x=8mm, y=8mm, z=4mm

Power Drift-Start : 0.198 W/kg

Power Drift-Finish: 0.191 W/kg

Power Drift (%) : -3.535



1 gram SAR value : 0.555 W/kg

10 gram SAR value : 0.248 W/kg

Area Scan Peak SAR : 0.730 W/kg

Zoom Scan Peak SAR : 1.251 W/kg

### 11.2.4 2437MHz, EUT Position: Top

#### Measurement Data

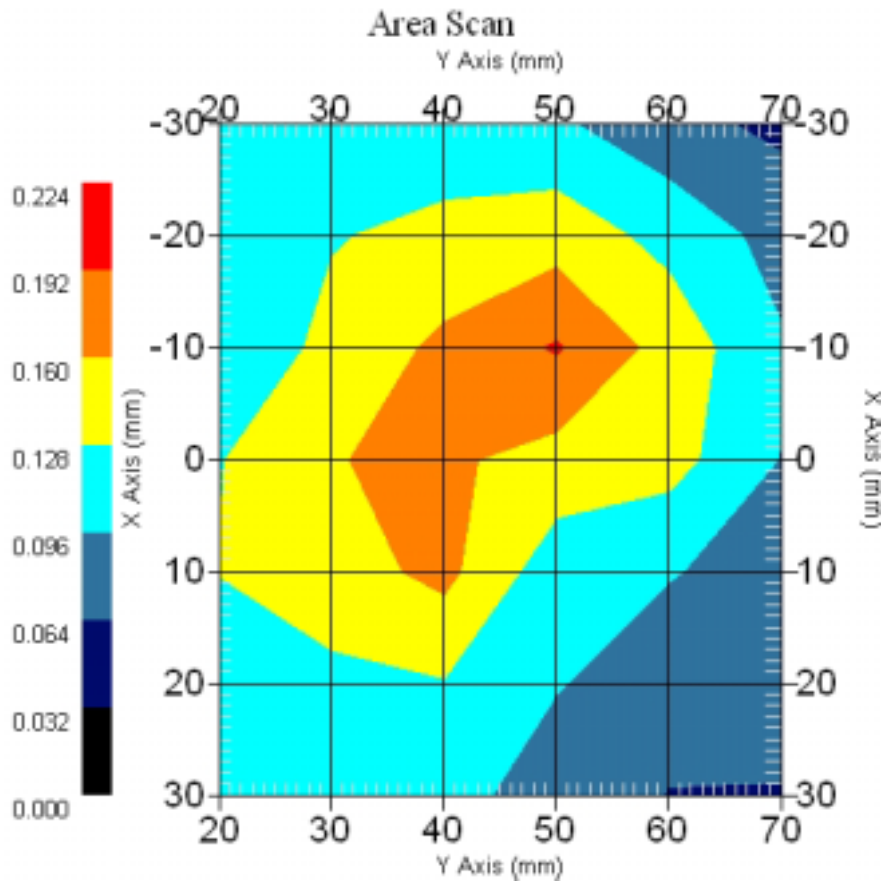
802.11b 2437MHz, Left Antenna

DUT Position : Top  
Channel : Mid – 6  
Crest Factor : 1  
Tissue Temp. : 21.40 °C  
Ambient Temp. : 22.30 °C  
Area Scan : 7x6x1 : Measurement x=10mm, y=10mm, z=4mm  
Zoom Scan : 5x5x8 : Measurement x=8mm, y=8mm, z=4mm

Power Drift-Start : 0.086 W/kg

Power Drift-Finish: 0.089 W/kg

Power Drift (%) : 3.459



1 gram SAR value : 0.183 W/kg

10 gram SAR value : 0.120 W/kg

Area Scan Peak SAR : 0.195 W/kg

Zoom Scan Peak SAR : 0.320 W/kg

### 11.2.5 2437MHz, EUT Position: Front

#### Measurement Data

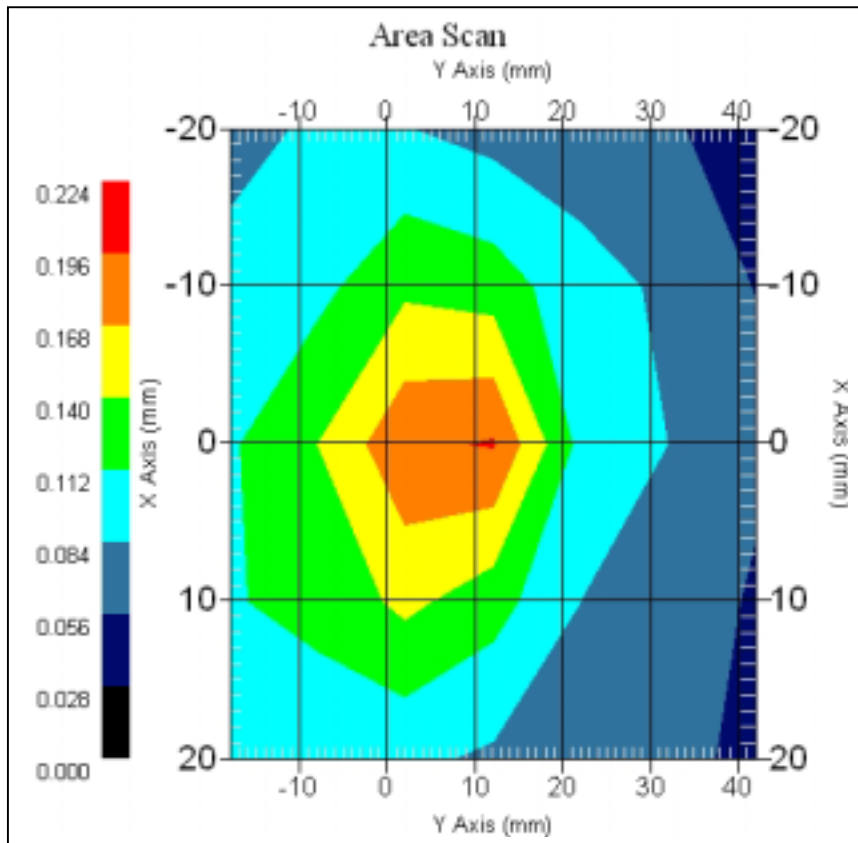
802.11b 2437MHz, Left Antenna

DUT Position : Bottom  
Channel : Mid – 6  
Crest Factor : 1  
Tissue Temp. : 21.40 °C  
Ambient Temp. : 22.30 °C  
Area Scan : 5x7x1 : Measurement x=10mm, y=10mm, z=4mm  
Zoom Scan : 7x7x7 : Measurement x=5mm, y=5mm, z=5mm

Power Drift-Start : 0.192 W/kg

Power Drift-Finish: 0.200 W/kg

Power Drift (%) : 4.274



1 gram SAR value : 0.188 W/kg

10 gram SAR value : 0.108 W/kg

Area Scan Peak SAR : 0.198 W/kg

Zoom Scan Peak SAR : 0.390 W/kg

### 11.3 802.11g, Right Antenna

#### 11.3.1 2412MHz, EUT Position: Bottom

Measurement Data

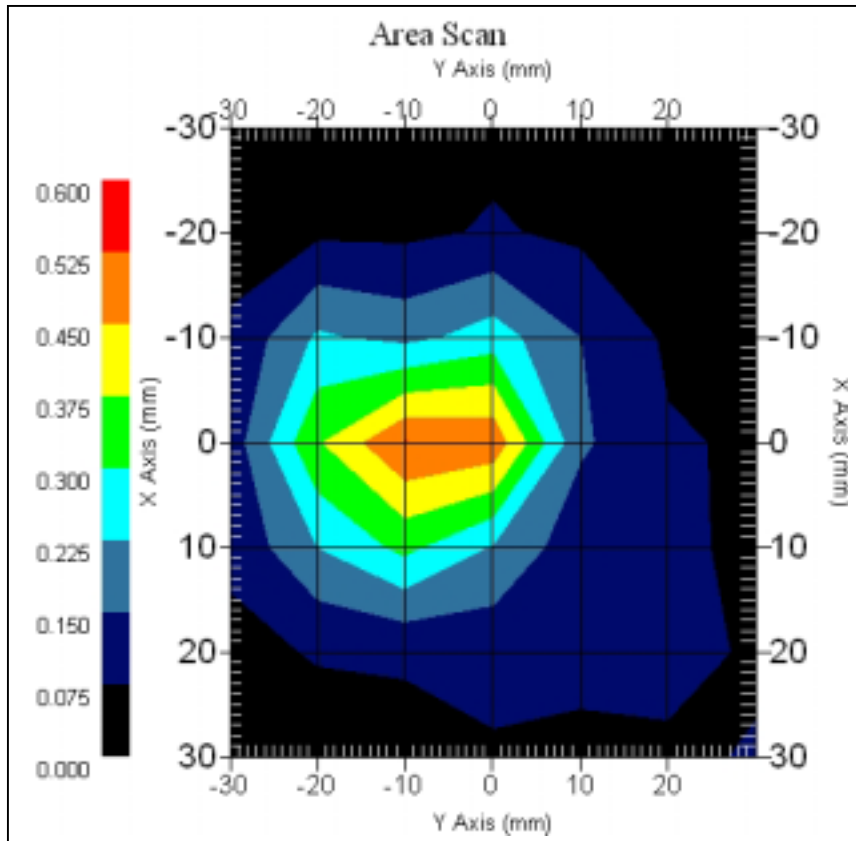
802.11g 2412MHz, Right Antenna

DUT Position : Bottom  
Channel : Low - 1  
Crest Factor : 1  
Tissue Temp. : 21.40 °C  
Ambient Temp. : 22.30 °C  
Area Scan : 7x7x1 : Measurement x=10mm, y=10mm, z=4mm  
Zoom Scan : 7x7x7 : Measurement x=5mm, y=5mm, z=5mm

Power Drift-Start : 0.497 W/kg

Power Drift-Finish: 0.497 W/kg

Power Drift (%) : -0.052



1 gram SAR value : 0.489 W/kg

10 gram SAR value : 0.237 W/kg

Area Scan Peak SAR : 0.526 W/kg

Zoom Scan Peak SAR : 0.950 W/kg



### 11.3.2 2437MHz, EUT Position: Bottom

#### Measurement Data

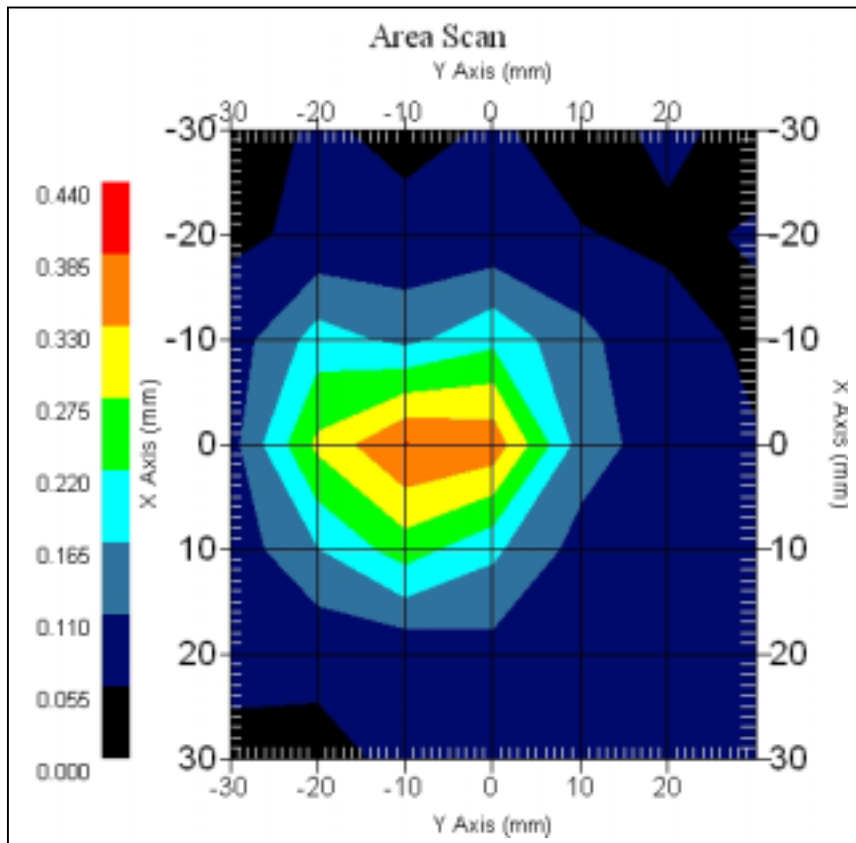
802.11g 2437MHz, Right Antenna

DUT Position : Bottom  
Channel : Mid - 6  
Crest Factor : 1  
Tissue Temp. : 21.40 °C  
Ambient Temp. : 22.30 °C  
Area Scan : 7x7x1 : Measurement x=10mm, y=10mm, z=4mm  
Zoom Scan : 7x7x7 : Measurement x=5mm, y=5mm, z=5mm

Power Drift-Start : 0.376 W/kg

Power Drift-Finish: 0.369 W/kg

Power Drift (%) : -2.001



1 gram SAR value : 0.357 W/kg

10 gram SAR value : 0.178 W/kg

Area Scan Peak SAR : 0.387 W/kg

Zoom Scan Peak SAR : 0.650 W/kg

### 11.3.3 2462MHz, EUT Position: Bottom

#### Measurement Data

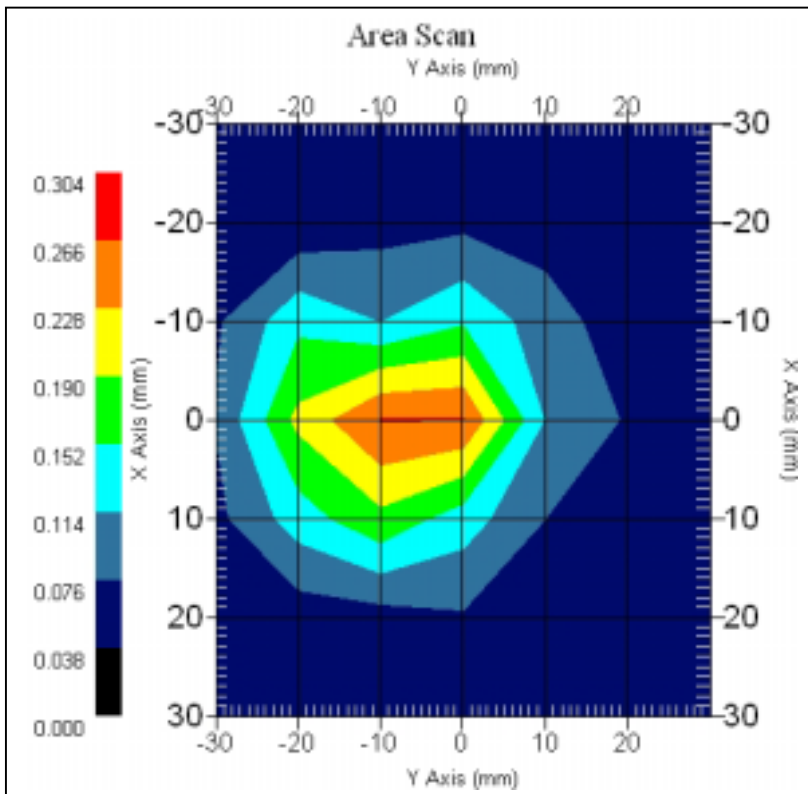
802.11g 2462MHz, Right Antenna

DUT Position : Bottom  
Channel : High – 11  
Crest Factor : 1  
Tissue Temp. : 21.40 °C  
Ambient Temp. : 22.30 °C  
Area Scan : 7x7x1 : Measurement x=10mm, y=10mm, z=4mm  
Zoom Scan : 7x7x7 : Measurement x=5mm, y=5mm, z=5mm

Power Drift-Start : 0.258 W/kg

Power Drift-Finish: 0.261 W/kg

Power Drift (%) : 1.365



1 gram SAR value : 0.249 W/kg

10 gram SAR value : 0.133 W/kg

Area Scan Peak SAR : 0.268 W/kg

Zoom Scan Peak SAR : 0.430 W/kg

### 11.3.4 2437MHz, EUT Position: Top

#### Measurement Data

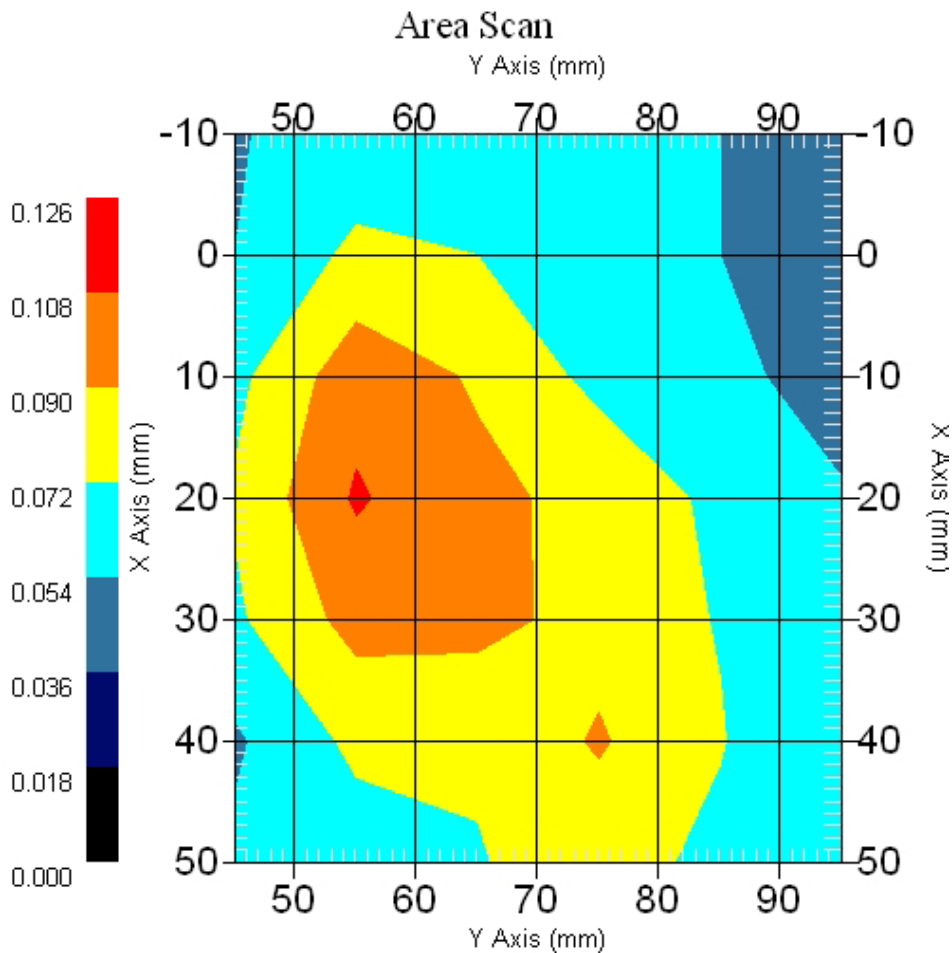
802.11g 2437MHz, Right Antenna

DUT Position : Top  
Channel : Mid - 6  
Crest Factor : 1  
Tissue Temp. : 21.40 °C  
Ambient Temp. : 22.30 °C  
Area Scan : 7x6x1 : Measurement x=10mm, y=10mm, z=4mm  
Zoom Scan : 5x5x8 : Measurement x=8mm, y=8mm, z=4mm

Power Drift-Start : 0.068 W/kg

Power Drift-Finish: 0.066 W/kg

Power Drift (%) : -2.941



1 gram SAR value : 0.099 W/kg

10 gram SAR value : 0.073 W/kg

Area Scan Peak SAR : 0.110 W/kg

Zoom Scan Peak SAR : 0.130 W/kg

### 11.3.5 2437MHz, EUT Position: Front

#### Measurement Data

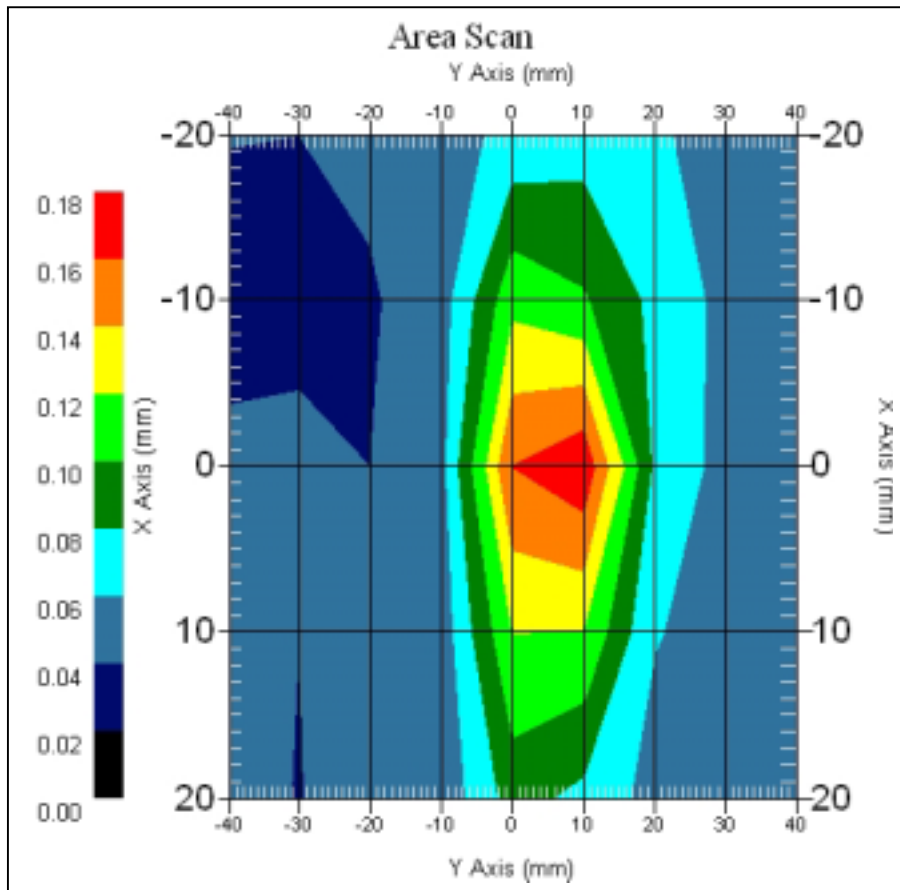
802.11g 2437MHz, Right Antenna

DUT Position : Front  
Channel : Mid – 6  
Crest Factor : 1  
Tissue Temp. : 21.40 °C  
Ambient Temp. : 22.30 °C  
Area Scan : 5x9x1 : Measurement x=10mm, y=10mm, z=4mm  
Zoom Scan : 7x7x7 : Measurement x=5mm, y=5mm, z=5mm

Power Drift-Start : 0.155 W/kg

Power Drift-Finish: 0.161 W/kg

Power Drift (%) : 3.864



1 gram SAR value : 0.166 W/kg

10 gram SAR value : 0.094 W/kg

Area Scan Peak SAR : 0.176 W/kg

Zoom Scan Peak SAR : 0.320 W/kg

## 11.4 802.11g, Left Antenna

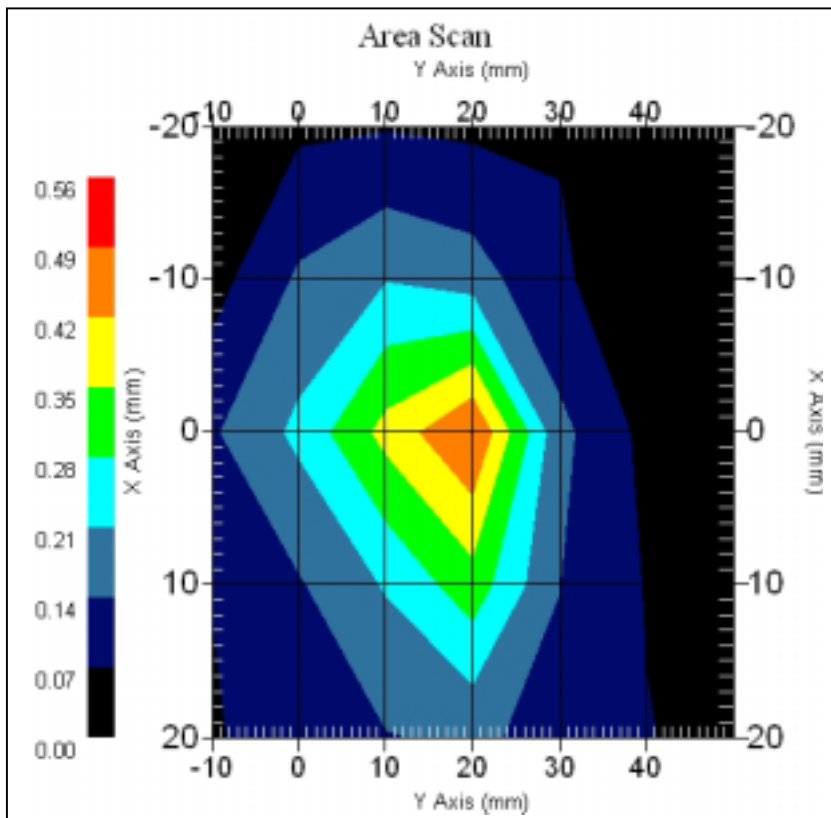
### 11.4.1 2412MHz, EUT Position: Bottom

#### Measurement Data

802.11g 2412MHz, Left Antenna

DUT Position : Bottom  
Channel : Low - 1  
Crest Factor : 1  
Tissue Temp. : 21.40 °C  
Ambient Temp. : 22.30 °C  
Area Scan : 5x7x1 : Measurement x=10mm, y=10mm, z=4mm  
Zoom Scan : 5x5x8 : Measurement x=8mm, y=8mm, z=4mm

Power Drift-Start : 0.224 W/kg  
Power Drift-Finish: 0.219 W/kg  
Power Drift (%) : -2.232



1 gram SAR value : 0.437 W/kg  
10 gram SAR value : 0.211 W/kg  
Area Scan Peak SAR : 0.492 W/kg  
Zoom Scan Peak SAR : 0.945 W/kg

### 11.4.2 2437MHz, EUT Position: Bottom

#### Measurement Data

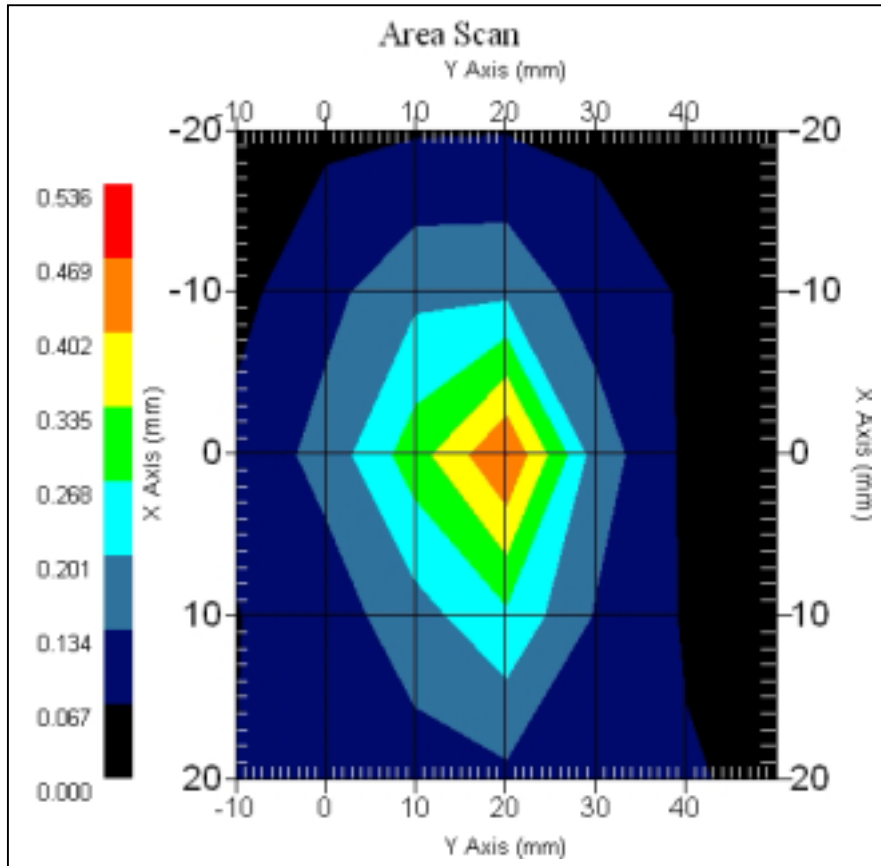
802.11g 2437MHz, Left Antenna

DUT Position : Bottom  
Channel : Mid - 6  
Crest Factor : 1  
Tissue Temp. : 21.40 °C  
Ambient Temp. : 22.30 °C  
Area Scan : 5x7x1 : Measurement x=10mm, y=10mm, z=4mm  
Zoom Scan : 5x5x8 : Measurement x=8mm, y=8mm, z=4mm

Power Drift-Start : 0.172 W/kg

Power Drift-Finish: 0.177 W/kg

Power Drift (%) : 2.907



1 gram SAR value : 0.425 W/kg

10 gram SAR value : 0.200 W/kg

Area Scan Peak SAR : 0.470 W/kg

Zoom Scan Peak SAR : 0.920 W/kg

### 11.4.3 2462MHz, EUT Position: Bottom

#### Measurement Data

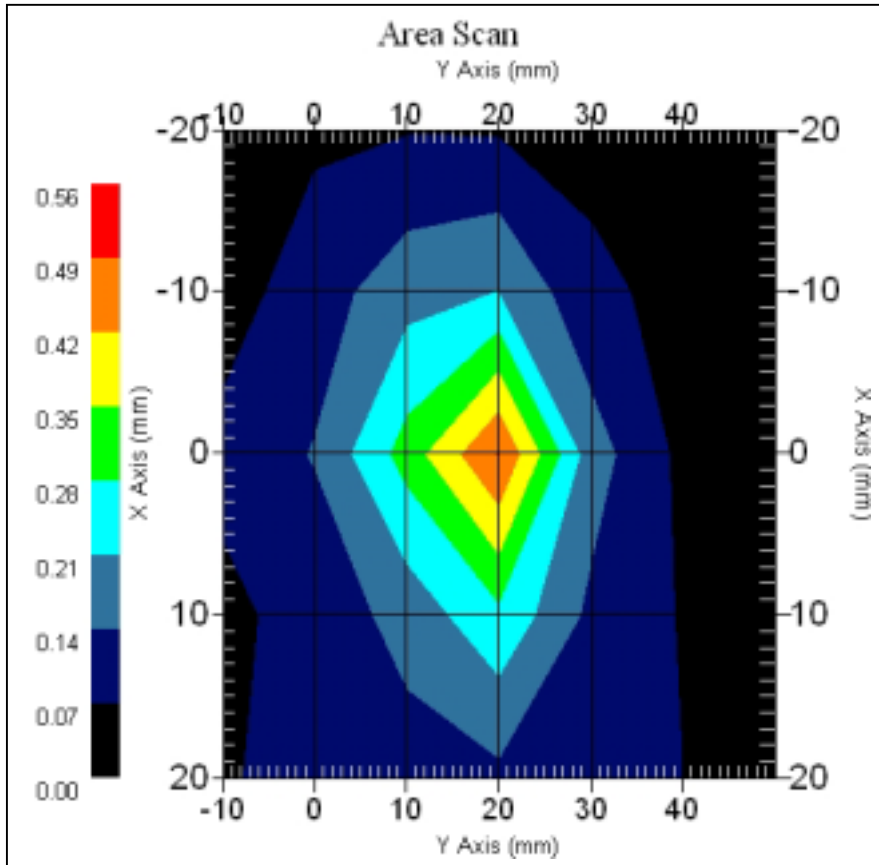
802.11g 2462MHz, Left Antenna

DUT Position : Bottom  
Channel : High - 11  
Crest Factor : 1  
Tissue Temp. : 21.40 °C  
Ambient Temp. : 22.30 °C  
Area Scan : 5x7x1 : Measurement x=10mm, y=10mm, z=4mm  
Zoom Scan : 5x5x8 : Measurement x=8mm, y=8mm, z=4mm

Power Drift-Start : 0.182 W/kg

Power Drift-Finish: 0.185 W/kg

Power Drift (%) : 2.113



1 gram SAR value : 0.397 W/kg

10 gram SAR value : 0.169 W/kg

Area Scan Peak SAR : 0.492 W/kg

Zoom Scan Peak SAR : 0.960 W/kg

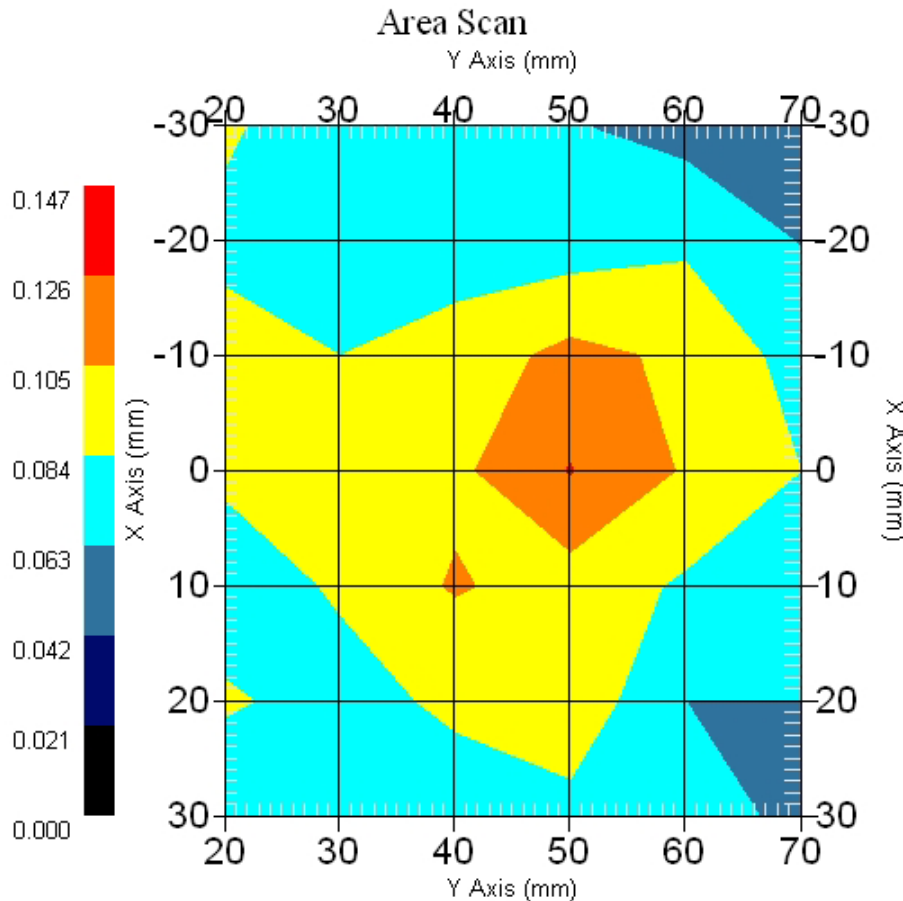
### 11.4.4 2437MHz, EUT Position: Top

#### Measurement Data

802.11g 2437MHz, Left Antenna

DUT Position : Top  
Channel : Mid - 6  
Crest Factor : 1  
Tissue Temp. : 21.40 °C  
Ambient Temp. : 22.30 °C  
Area Scan : 7x6x1 : Measurement x=10mm, y=10mm, z=4mm  
Zoom Scan : 5x5x8 : Measurement x=8mm, y=8mm, z=4mm

Power Drift-Start : 0.076 W/kg  
Power Drift-Finish: 0.079 W/kg  
Power Drift (%) : 3.176



1 gram SAR value : 0.108 W/kg  
10 gram SAR value : 0.078 W/kg  
Area Scan Peak SAR : 0.127 W/kg  
Zoom Scan Peak SAR : 0.170 W/kg



### 11.4.5 2437MHz, EUT Position: Front

#### Measurement Data

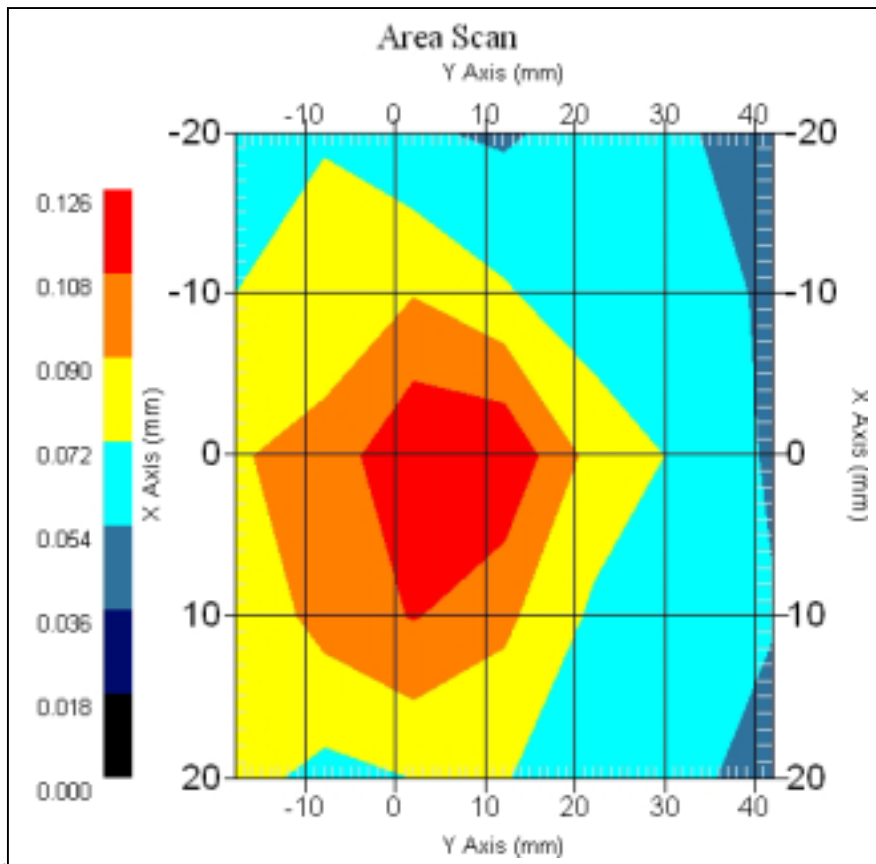
802.11g 2437MHz, Left Antenna

DUT Position : Bottom  
Channel : Mid – 6  
Crest Factor : 1  
Tissue Temp. : 21.40 °C  
Ambient Temp. : 22.30 °C  
Area Scan : 5x7x1 : Measurement x=10mm, y=10mm, z=4mm  
Zoom Scan : 5x5x8 : Measurement x=8mm, y=8mm, z=4mm

Power Drift-Start : 0.126 W/kg

Power Drift-Finish: 0.128 W/kg

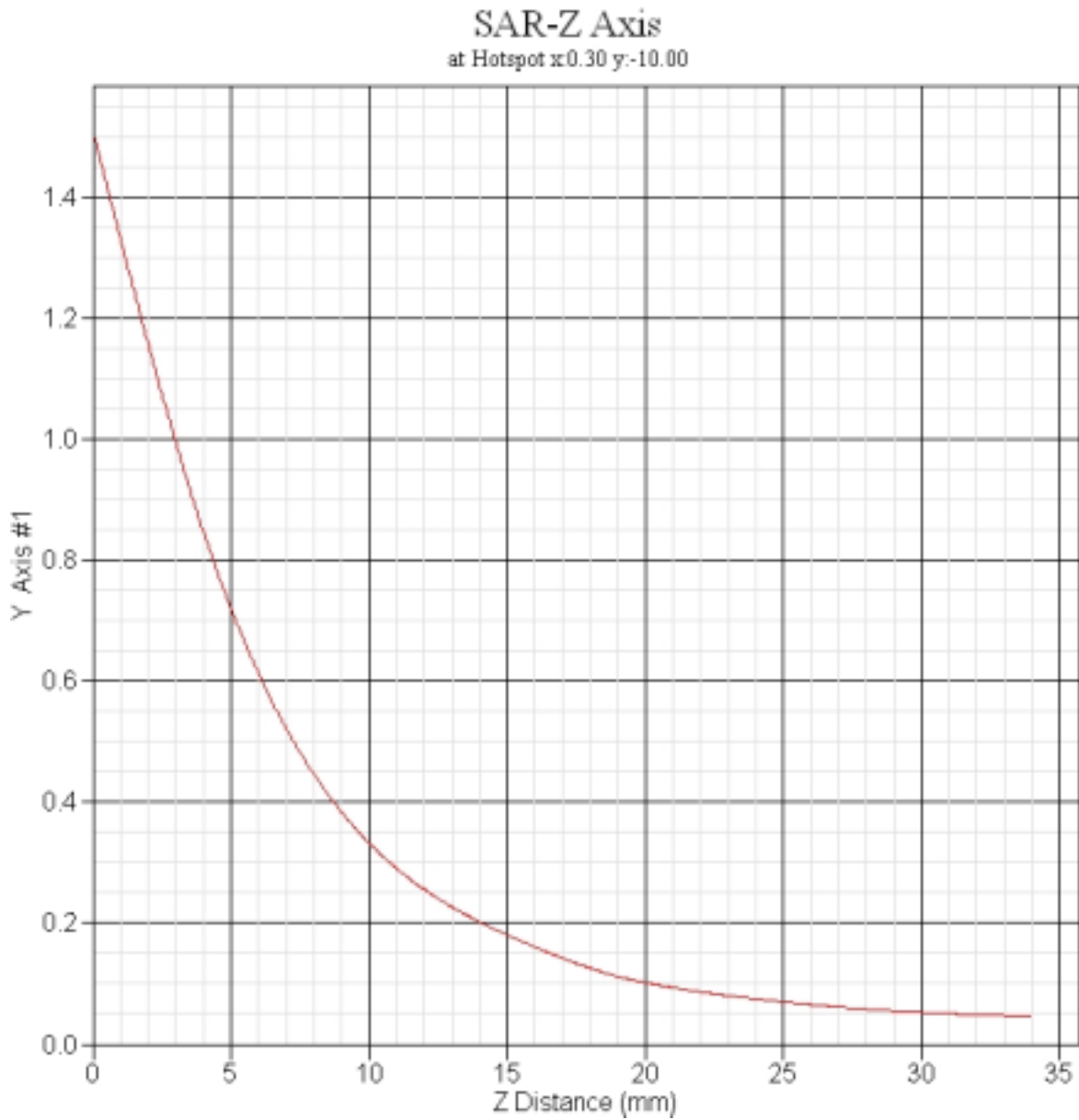
Power Drift (%) : 1.587



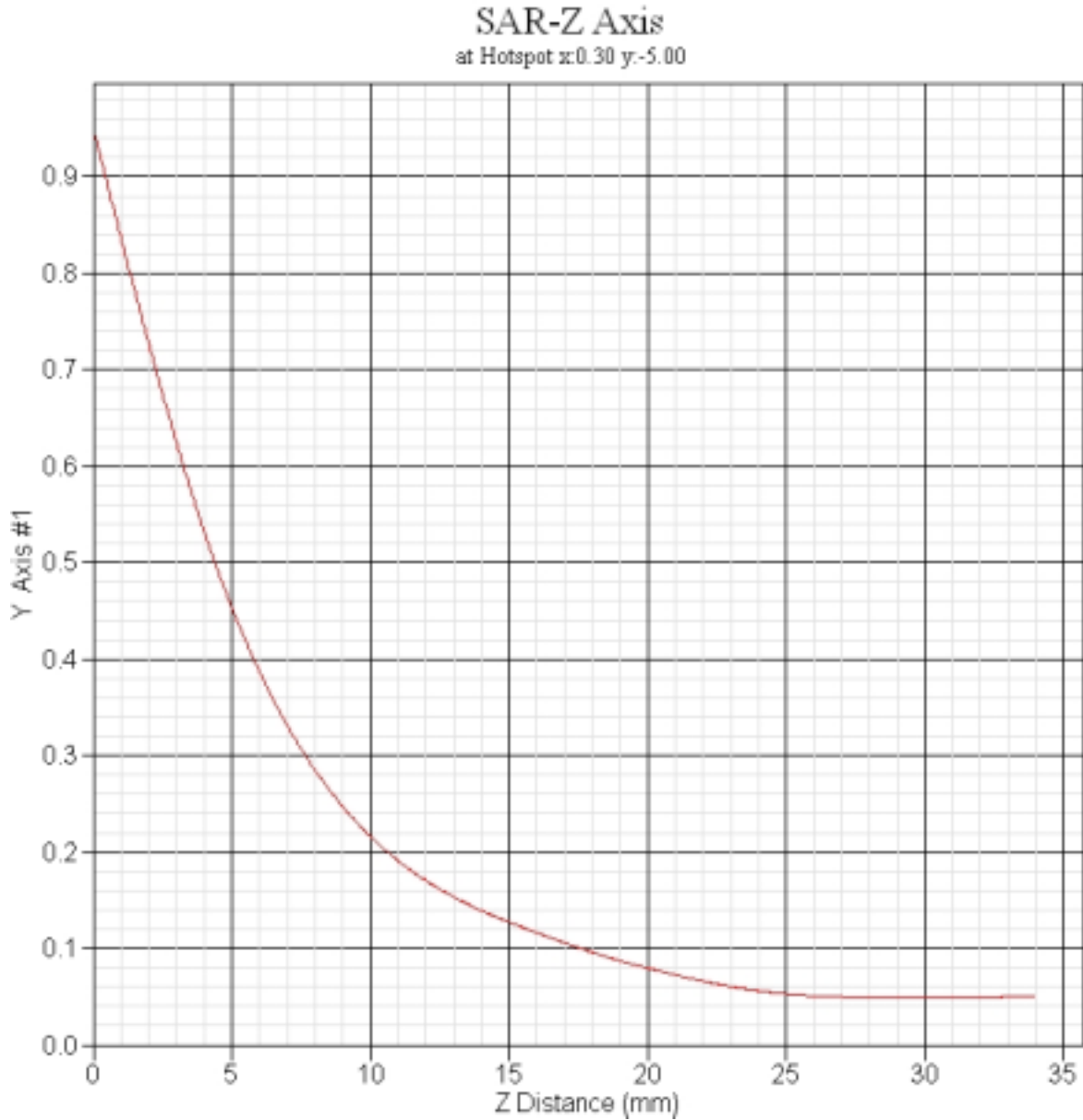
1 gram SAR value : 0.125 W/kg  
10 gram SAR value : 0.083 W/kg  
Area Scan Peak SAR : 0.124 W/kg  
Zoom Scan Peak SAR : 0.200 W/kg

### 11.5 2450MHz Z-Axis plot

#### 11.5.1 Frequency: 802.11b 2412MHz, EUT Bottom (Right Antenna)



11.5.2 Frequency: 802.11g 2412MHz, EUT Bottom (Right Antenna)



## 12. 5200 MHz SAR measurement Data

### ALSAS-10U Ver 2.2.0 SAR Test Report

Validation date : 30-Aug-2005

Measurement Date : 30-Aug-2005

#### Product Data

Device Name : PCMCIA CARDBUS

Model : CB9

Frequency : 5200 MHz

Drift Time : 0 min(s)

Length : 118 mm

Width : 54 mm

Depth : 8.8 mm

Antenna Type : Internal

#### Phantom Data

Name : APREL-Uni

Type : Uni-Phantom

Size (mm) : 280 x 280 x 200

Location : Center

#### Tissue Data

Type : BODY

Serial No. : 5200B0816

Frequency : 5200.00 MHz

Last Calib. Date : 30-Aug-2005

Temperature : 21.90 °C

Ambient Temp. : 22.80 °C

Humidity : 58.00 RH%

Epsilon : 41.83 F/m

Sigma : 5.401 S/m

Density : 1000.00 kg/cu. m

#### Probe Data

Name : E-field Probe

Model : ALS-E-020

Type : E-Field Triangle

Serial No. : 266

Last Calib. Date : 16-Mar-2005

Frequency : 5200.00 MHz

Duty Cycle Factor: 1

Conversion Factor: 4.4

Probe Sensitivity: 1.20 1.20 1.20  $\mu\text{V}/(\text{V}/\text{m})^2$

Compression Point: 95.00 mV

Offset : 1.56 mm