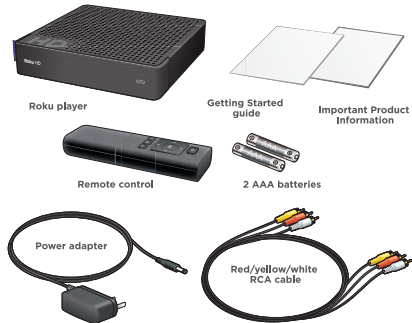


Welcome to Roku

This guide contains all the information you need to get set up quickly from the comfort of your couch.

What's included in the box

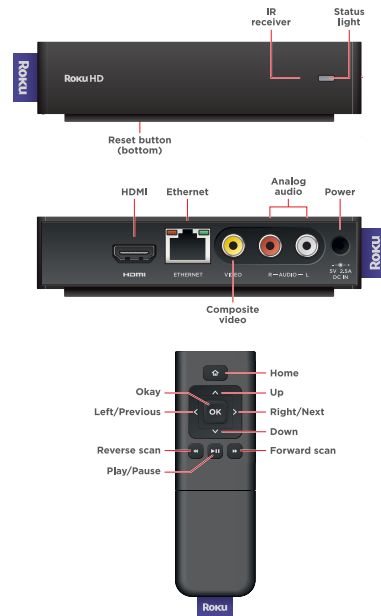


What you need to use your player

- A TV (high-definition or standard-definition)
- One of the following sets of cables:
 - Red/yellow/white RCA cable (included)
 - HDMI cable*
- A broadband Internet connection (DSL, cable, LAN) — the faster your connection, the better the quality.
- A wireless network or a wired network using an Ethernet cable (not included).

* sold separately

Your Roku player at a glance

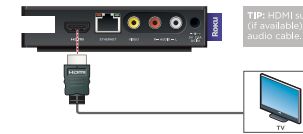


1 | Connect to your TV

Choose the setup that matches the ports on your TV. For best picture quality, use an HDMI connection (if available). Make sure your TV is on and set to display the correct video input.

HDMI (for HD)

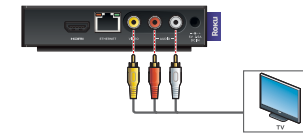
Connect an HDMI cable* to the **HDMI** port on your player and to the **HDMI IN** port on your TV.



TIP: HDMI supports 5.1 surround sound (if available). You don't need a separate audio cable.

RCA

Connect the yellow connectors on the red/yellow/white RCA cable to the **VIDEO** port on your player and the **VIDEO IN** port on your TV. Connect the red and white connectors to the **R-AUDIO-L** ports on your player and the **L/R AUDIO IN** ports on your TV.



* sold separately

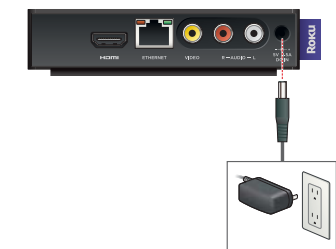
2 | Power up

Insert the batteries in the remote

Slide the bottom half of the remote downward to open the remote. Insert two AAA batteries (included) in your remote.



Connect the power adapter to your player



Continued >