

## AnnexD – Liquid and System Validation

### Liquid Validation

2450MHz

; Name : DAK 3.5 Head 18.13 deg.C 2023-Oct-05 20:44:51						
; Date : 2023-Oct-05 20:44:51						
; Temperature(C) : 18.13						
; Probe : DAK 3.5						
; Network Analyzer : Agilent Network Analyzer						
	Measured data		Target data		Deviation %	
; MHz	EpsR	Sigma(S/m)	EpsR	Sigma(S/m)	EpsR	Sigma(S/m)
2400	39.8834	1.7437	39.3	1.7567	1.4845	-0.74
2412	39.8809	1.7419	39.276	1.7671	1.5401	-1.4261
2412	39.8813	1.742	39.276	1.7671	1.5411	-1.4204
2412	39.8817	1.7422	39.276	1.7671	1.5422	-1.4091
2412	39.8822	1.7424	39.276	1.7671	1.5434	-1.3978
2412	39.8826	1.7427	39.276	1.7671	1.5445	-1.3808
2412	39.883	1.743	39.276	1.7671	1.5455	-1.3638
2412	39.8835	1.7433	39.276	1.7671	1.5467	-1.3468
2412	39.884	1.7435	39.276	1.7671	1.548	-1.3355
2412	39.8845	1.7438	39.276	1.7671	1.5493	-1.3185
2412	39.8851	1.7441	39.276	1.7671	1.5508	-1.3016
2412	39.8858	1.7443	39.276	1.7671	1.5526	-1.2902
2412	39.8864	1.7446	39.276	1.7671	1.5541	-1.2733
2412	39.887	1.7448	39.276	1.7671	1.5557	-1.262
2412	39.8877	1.745	39.276	1.7671	1.5574	-1.2506
2412	39.8885	1.7452	39.276	1.7671	1.5595	-1.2393
2412	39.889	1.7454	39.276	1.7671	1.5607	-1.228
2412	39.8896	1.7456	39.276	1.7671	1.5623	-1.2167
2412	39.89	1.7457	39.276	1.7671	1.5633	-1.211
2412	39.8906	1.7458	39.276	1.7671	1.5648	-1.2054
2437	39.8642	1.75	39.23	1.79	1.6166	-2.2346
2437	39.8643	1.75	39.23	1.79	1.6169	-2.2346
2437	39.8644	1.75	39.23	1.79	1.6171	-2.2346
2437	39.8644	1.7501	39.23	1.79	1.6171	-2.2291
2437	39.8645	1.7501	39.23	1.79	1.6174	-2.2291
2437	39.8647	1.7501	39.23	1.79	1.6179	-2.2291

2437	39.8648	1.7501	39.23	1.79	1.6181	-2.2291
2437	39.8648	1.7502	39.23	1.79	1.6181	-2.2235
2437	39.8648	1.7502	39.23	1.79	1.6181	-2.2235
2437	39.8648	1.7502	39.23	1.79	1.6181	-2.2235
2437	39.8647	1.7503	39.23	1.79	1.6179	-2.2179
2437	39.8645	1.7503	39.23	1.79	1.6174	-2.2179
2437	39.8643	1.7503	39.23	1.79	1.6169	-2.2179
2437	39.8642	1.7503	39.23	1.79	1.6166	-2.2179
2437	39.864	1.7503	39.23	1.79	1.6161	-2.2179
2437	39.8637	1.7504	39.23	1.79	1.6153	-2.2123
2437	39.8634	1.7504	39.23	1.79	1.6146	-2.2123
2437	39.863	1.7505	39.23	1.79	1.6136	-2.2067
2437	39.8628	1.7505	39.23	1.79	1.6131	-2.2067
2462	39.8219	1.7656	39.184	1.8128	1.628	-2.6037
2462	39.8218	1.7656	39.184	1.8128	1.6277	-2.6037
2462	39.8218	1.7657	39.184	1.8128	1.6277	-2.5982
2462	39.8218	1.7657	39.184	1.8128	1.6277	-2.5982
2462	39.8217	1.7658	39.184	1.8128	1.6274	-2.5927
2462	39.8217	1.7658	39.184	1.8128	1.6274	-2.5927
2462	39.8216	1.7658	39.184	1.8128	1.6272	-2.5927
2462	39.8215	1.7659	39.184	1.8128	1.6269	-2.5872
2462	39.8215	1.7659	39.184	1.8128	1.6269	-2.5872
2462	39.8214	1.7659	39.184	1.8128	1.6267	-2.5872
2462	39.8214	1.7659	39.184	1.8128	1.6267	-2.5872
2462	39.8213	1.766	39.184	1.8128	1.6264	-2.5816
2462	39.8213	1.766	39.184	1.8128	1.6264	-2.5816
2462	39.8212	1.7661	39.184	1.8128	1.6262	-2.5761
2462	39.8211	1.7661	39.184	1.8128	1.6259	-2.5761
2462	39.821	1.7661	39.184	1.8128	1.6257	-2.5761
2462	39.8208	1.7662	39.184	1.8128	1.6252	-2.5706
2462	39.8206	1.7662	39.184	1.8128	1.6246	-2.5706
2462	39.8206	1.7663	39.184	1.8128	1.6246	-2.5651
2463	39.8205	1.7663	39.1827	1.8139	1.6278	-2.6242
2463	39.8204	1.7664	39.1827	1.8139	1.6275	-2.6187
2484	39.7777	1.7843	39.1547	1.8363	1.5911	-2.8318

## Measurement Report for Dipole(2450.000MHz)

### Exposure Conditions

Phantom Section, TSL	Frequency [MHz], Channel Number	Conversion Factor	TSL Conductivity [S/m]	TSL Permittivity
Flat, HSL	2450.000, 0	6.77	1.78	39.84

### Hardware Setup

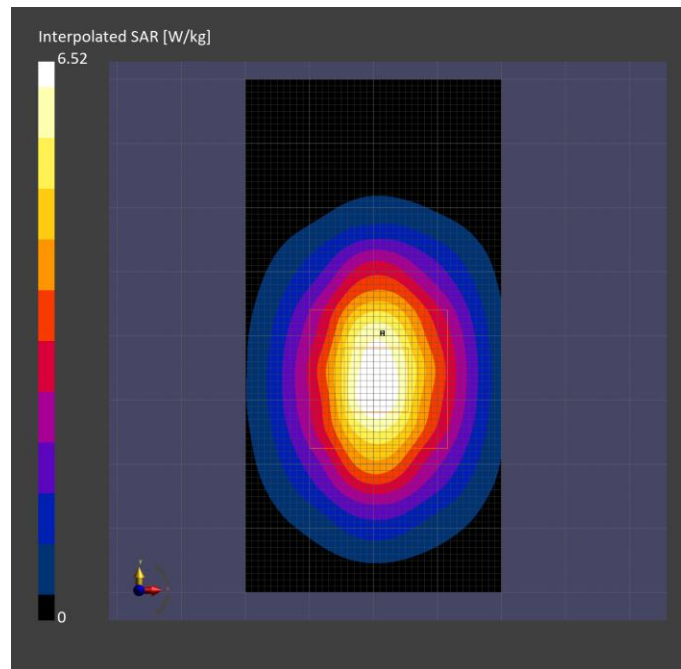
Phantom	TSL, Measured Date	Probe, Calibration Date	DAE, Calibration Date
ELI V8.0 (20deg probe tilt) - 2191	HBBL-600-10000 SLAAHU16BC221222-1, 2023-Oct-05	EX3DV4 - SN7783, 2023-01-24	DAE4 Sn1724, 2023-01-23

### Scan Setup

	Area Scan	Zoom Scan
Grid Extents [mm]	40.0 x 80.0	30.0 x 30.0 x 30.0
Grid Steps [mm]	10.0 x 10.0	5.0 x 5.0 x 1.5
Sensor Surface [mm]	3.0	1.4
Graded Grid	N/A	Yes
Grading Ratio	N/A	1.5
MAIA	N/A	N/A
Surface Detection	VMS + 6p	VMS + 6p
Scan Method	Measured	Measured

### Measurement Results

	Area Scan	Zoom Scan
Date	2023-10-05, 21:30	2023-10-05, 21:36
psSAR 1g [W/kg]	5.02	5.04
psSAR 10g [W/kg]	2.34	2.36
Power Drift [dB]	0.00	0.01
Power Scaling	Disabled	Disabled
Scaling Factor [dB]		
TSL Correction	Positive / Negative	Positive / Negative
M2/M1 [%]		79.4
Dist 3dB Peak [mm]		9.0



; Name : DAK 3.5 Head 18.13 deg.C 2023-Oct-08 18:48:08						
; Date : 2023-Oct-08 18:48:08						
; Temperature(C) : 18.13						
; Probe : DAK 3.5						
; Network Analyzer : Agilent Network Analyzer						
	Measured data		Target data		Deviation %	
; MHz	EpsR	Sigma(S/m)	EpsR	Sigma(S/m)	EpsR	Sigma(S/m)
2400	40.4727	1.7999	39.3	1.7567	2.984	2.4592
2412	40.4553	1.8065	39.276	1.7671	3.0026	2.2296
2412	40.4552	1.8065	39.276	1.7671	3.0023	2.2296
2412	40.4551	1.8065	39.276	1.7671	3.0021	2.2296
2412	40.455	1.8065	39.276	1.7671	3.0018	2.2296
2412	40.4549	1.8065	39.276	1.7671	3.0016	2.2296
2412	40.4547	1.8065	39.276	1.7671	3.0011	2.2296
2412	40.4547	1.8065	39.276	1.7671	3.0011	2.2296
2412	40.4547	1.8065	39.276	1.7671	3.0011	2.2296
2412	40.4546	1.8065	39.276	1.7671	3.0008	2.2296
2412	40.4546	1.8065	39.276	1.7671	3.0008	2.2296
2412	40.4546	1.8065	39.276	1.7671	3.0008	2.2296
2412	40.4545	1.8065	39.276	1.7671	3.0006	2.2296
2412	40.4545	1.8065	39.276	1.7671	3.0006	2.2296
2412	40.4545	1.8065	39.276	1.7671	3.0006	2.2296
2412	40.4545	1.8065	39.276	1.7671	3.0006	2.2296
2412	40.4545	1.8065	39.276	1.7671	3.0006	2.2296
2412	40.4545	1.8065	39.276	1.7671	3.0006	2.2296
2412	40.4545	1.8065	39.276	1.7671	3.0006	2.2296
2412	40.4544	1.8065	39.276	1.7671	3.0003	2.2296
2412	40.4543	1.8065	39.276	1.7671	3.0001	2.2296
2437	40.4019	1.8217	39.23	1.79	2.9873	1.7709
2437	40.4018	1.8218	39.23	1.79	2.987	1.7765
2437	40.4018	1.8218	39.23	1.79	2.987	1.7765
2437	40.4017	1.8218	39.23	1.79	2.9867	1.7765
2437	40.4017	1.8219	39.23	1.79	2.9867	1.7821
2437	40.4017	1.822	39.23	1.79	2.9867	1.7877
2437	40.4018	1.822	39.23	1.79	2.987	1.7877
2437	40.4018	1.8221	39.23	1.79	2.987	1.7933
2437	40.4016	1.8221	39.23	1.79	2.9865	1.7933
2437	40.4016	1.8222	39.23	1.79	2.9865	1.7989

2437	40.4016	1.8222	39.23	1.79	2.9865	1.7989
2437	40.4014	1.8223	39.23	1.79	2.986	1.8045
2437	40.4013	1.8223	39.23	1.79	2.9857	1.8045
2437	40.4012	1.8223	39.23	1.79	2.9855	1.8045
2437	40.401	1.8224	39.23	1.79	2.985	1.8101
2437	40.4009	1.8224	39.23	1.79	2.9847	1.8101
2437	40.4008	1.8224	39.23	1.79	2.9845	1.8101
2437	40.4007	1.8224	39.23	1.79	2.9842	1.8101
2437	40.4006	1.8225	39.23	1.79	2.9839	1.8156
2462	40.3656	1.8387	39.184	1.8128	3.0155	1.4287
2462	40.3655	1.8387	39.184	1.8128	3.0153	1.4287
2462	40.3654	1.8387	39.184	1.8128	3.015	1.4287
2462	40.3654	1.8388	39.184	1.8128	3.015	1.4342
2462	40.3653	1.8388	39.184	1.8128	3.0148	1.4342
2462	40.3651	1.8389	39.184	1.8128	3.0142	1.4398
2462	40.3651	1.8389	39.184	1.8128	3.0142	1.4398
2462	40.365	1.8389	39.184	1.8128	3.014	1.4398
2462	40.3649	1.839	39.184	1.8128	3.0137	1.4453
2462	40.3647	1.839	39.184	1.8128	3.0132	1.4453
2462	40.3645	1.839	39.184	1.8128	3.0127	1.4453
2462	40.3644	1.839	39.184	1.8128	3.0125	1.4453
2462	40.3643	1.8391	39.184	1.8128	3.0122	1.4508
2462	40.3642	1.8391	39.184	1.8128	3.0119	1.4508
2462	40.364	1.8391	39.184	1.8128	3.0114	1.4508
2462	40.3638	1.8391	39.184	1.8128	3.0109	1.4508
2462	40.3637	1.8391	39.184	1.8128	3.0107	1.4508
2462	40.3636	1.8392	39.184	1.8128	3.0104	1.4563
2462	40.3635	1.8392	39.184	1.8128	3.0102	1.4563
2484	40.3189	1.8551	39.1547	1.8363	2.9733	1.0238

## Measurement Report for Dipole(2450.000MHz)

### Exposure Conditions

Phantom Section, TSL	Frequency [MHz], Channel Number	Conversion Factor	TSL Conductivity [S/m]	TSL Permittivity
Flat, HSL	2450.000, 0	6.77	1.83	40.38

### Hardware Setup

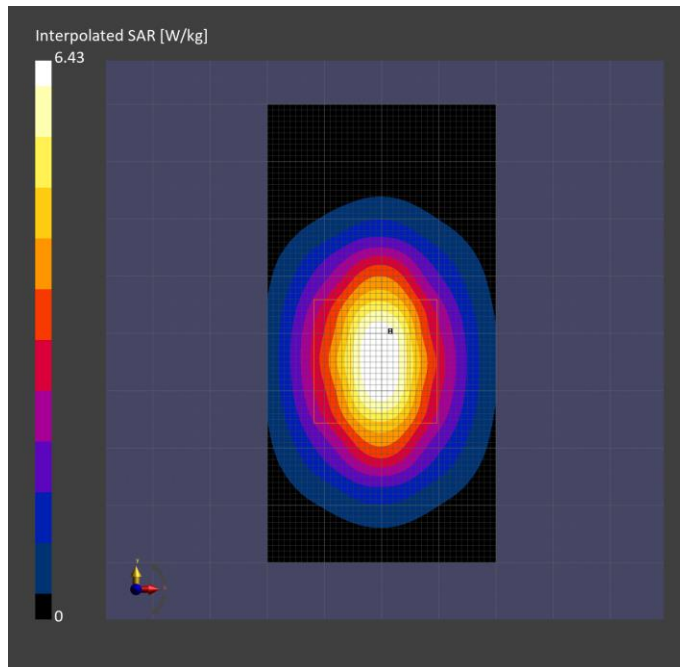
Phantom	TSL, Measured Date	Probe, Calibration Date	DAE, Calibration Date
ELI V8.0 (20deg probe tilt) - 2191	HBBL-600-10000 SLAAHU16BC221222-1, 2023-Oct-08	EX3DV4 - SN7783, 2023-01-24	DAE4 Sn1724, 2023-01-23

### Scan Setup

	Area Scan	Zoom Scan
Grid Extents [mm]	40.0 x 80.0	30.0 x 30.0 x 30.0
Grid Steps [mm]	10.0 x 10.0	5.0 x 5.0 x 1.5
Sensor Surface [mm]	3.0	1.4
Graded Grid	N/A	Yes
Grading Ratio	N/A	1.5
MAIA	N/A	N/A
Surface Detection	All points	All points
Scan Method	Measured	Measured

### Measurement Results

	Area Scan	Zoom Scan
Date	2023-10-08, 18:56	2023-10-08, 19:06
psSAR 1g [W/kg]	5.03	5.10
psSAR 10g [W/kg]	2.34	2.35
Power Drift [dB]	-0.05	-0.05
Power Scaling	Disabled	Disabled
Scaling Factor [dB]		
TSL Correction	Positive / Negative	Positive / Negative
M2/M1 [%]		79.5
Dist 3dB Peak [mm]		9.0



; Name : DAK3.5 Head 18.13 deg.C 2023-Oct-17 22:48:08						
; Date : 2023-Oct-11 17:48:08						
; Temperature(C) : 18.13						
; Probe : DAK 3.5						
; Network Analyzer : Agilent Network Analyzer						
	Measured data		Target data		Deviation %	
; MHz	EpsR	Sigma(S/m)	EpsR	Sigma(S/m)	EpsR	Sigma(S/m)
2400	39.2889	1.7556	39.3	1.7567	-0.0282	-0.0626
2412	39.2684	1.7658	39.276	1.7671	-0.0194	-0.0736
2412	39.2683	1.7659	39.276	1.7671	-0.0196	-0.0679
2412	39.2682	1.7659	39.276	1.7671	-0.0199	-0.0679
2412	39.2681	1.7659	39.276	1.7671	-0.0201	-0.0679
2412	39.268	1.766	39.276	1.7671	-0.0204	-0.0622
2412	39.2679	1.766	39.276	1.7671	-0.0206	-0.0622
2412	39.2678	1.7661	39.276	1.7671	-0.0209	-0.0566
2412	39.2677	1.7661	39.276	1.7671	-0.0211	-0.0566
2412	39.2676	1.7662	39.276	1.7671	-0.0214	-0.0509
2412	39.2676	1.7662	39.276	1.7671	-0.0214	-0.0509
2412	39.2675	1.7663	39.276	1.7671	-0.0216	-0.0453
2412	39.2674	1.7663	39.276	1.7671	-0.0219	-0.0453
2412	39.2673	1.7664	39.276	1.7671	-0.0222	-0.0396
2412	39.2672	1.7664	39.276	1.7671	-0.0224	-0.0396
2412	39.2671	1.7665	39.276	1.7671	-0.0227	-0.034
2412	39.267	1.7665	39.276	1.7671	-0.0229	-0.034
2412	39.2669	1.7665	39.276	1.7671	-0.0232	-0.034
2412	39.2668	1.7666	39.276	1.7671	-0.0234	-0.0283
2412	39.2667	1.7666	39.276	1.7671	-0.0237	-0.0283
2437	39.2239	1.788	39.23	1.79	-0.0155	-0.1117
2437	39.2239	1.7881	39.23	1.79	-0.0155	-0.1061
2437	39.2238	1.7881	39.23	1.79	-0.0158	-0.1061
2437	39.2237	1.7882	39.23	1.79	-0.0161	-0.1006
2437	39.2236	1.7882	39.23	1.79	-0.0163	-0.1006
2437	39.2235	1.7883	39.23	1.79	-0.0166	-0.095
2437	39.2234	1.7883	39.23	1.79	-0.0168	-0.095
2437	39.2233	1.7884	39.23	1.79	-0.0171	-0.0894
2437	39.2232	1.7884	39.23	1.79	-0.0173	-0.0894
2437	39.2231	1.7884	39.23	1.79	-0.0176	-0.0894
2437	39.223	1.7885	39.23	1.79	-0.0178	-0.0838
2437	39.2229	1.7885	39.23	1.79	-0.0181	-0.0838
2437	39.2228	1.7886	39.23	1.79	-0.0184	-0.0782

2437	39.2227	1.7886	39.23	1.79	-0.0186	-0.0782
2437	39.2226	1.7887	39.23	1.79	-0.0189	-0.0726
2437	39.2226	1.7887	39.23	1.79	-0.0189	-0.0726
2437	39.2225	1.7888	39.23	1.79	-0.0191	-0.067
2437	39.2224	1.7888	39.23	1.79	-0.0194	-0.067
2437	39.2223	1.7889	39.23	1.79	-0.0196	-0.0615
2462	39.1853	1.8126	39.184	1.8128	0.0033	-0.011
2462	39.1853	1.8126	39.184	1.8128	0.0033	-0.011
2462	39.1852	1.8127	39.184	1.8128	0.0031	-0.0055
2462	39.1851	1.8127	39.184	1.8128	0.0028	-0.0055
2462	39.1851	1.8128	39.184	1.8128	0.0028	0
2462	39.185	1.8129	39.184	1.8128	0.0026	0.0055
2462	39.1849	1.8129	39.184	1.8128	0.0023	0.0055
2462	39.1849	1.813	39.184	1.8128	0.0023	0.011
2462	39.1848	1.813	39.184	1.8128	0.002	0.011
2462	39.1847	1.8131	39.184	1.8128	0.0018	0.0165
2462	39.1847	1.8131	39.184	1.8128	0.0018	0.0165
2462	39.1846	1.8132	39.184	1.8128	0.0015	0.0221
2462	39.1845	1.8133	39.184	1.8128	0.0013	0.0276
2462	39.1845	1.8133	39.184	1.8128	0.0013	0.0276
2462	39.1844	1.8134	39.184	1.8128	0.001	0.0331
2462	39.1843	1.8134	39.184	1.8128	0.0008	0.0331
2462	39.1843	1.8135	39.184	1.8128	0.0008	0.0386
2462	39.1842	1.8135	39.184	1.8128	0.0005	0.0386
2462	39.1841	1.8136	39.184	1.8128	0.0003	0.0441
2480	39.1624	1.8322	39.1547	1.8363	0.0197	-0.2233



## Measurement Report for Dipole(2450.000MHz)

### Exposure Conditions

Phantom Section, TSL	Frequency [MHz], Channel Number	Conversion Factor	TSL Conductivity [S/m]	TSL Permittivity
Flat, HSL	2450.000, 0	6.77	1.79	39.4

### Hardware Setup

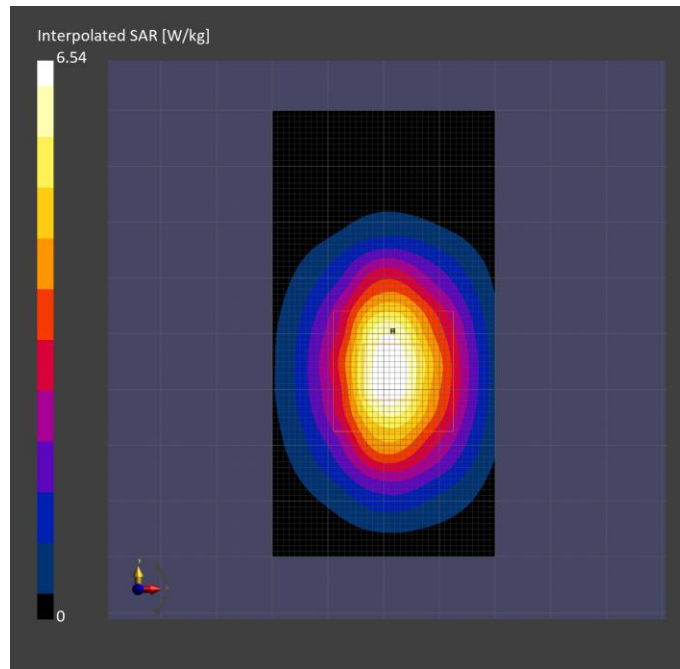
Phantom	TSL, Measured Date	Probe, Calibration Date	DAE, Calibration Date
ELI V8.0 (20deg probe tilt) - 2191	HBBL-600-10000 SLAAHU16BC221222-1, 2023-Oct-11	EX3DV4 - SN7783, 2023-01-24	DAE4 Sn1724, 2023-01-23

### Scan Setup

	Area Scan	Zoom Scan
Grid Extents [mm]	40.0 x 80.0	30.0 x 30.0 x 30.0
Grid Steps [mm]	10.0 x 10.0	5.0 x 5.0 x 1.5
Sensor Surface [mm]	3.0	1.4
Graded Grid	N/A	Yes
Grading Ratio	N/A	1.5
MAIA	N/A	N/A
Surface Detection	All points	All points
Scan Method	Measured	Measured

### Measurement Results

	Area Scan	Zoom Scan
Date	2023-10-11, 17:06	2023-10-11, 17:15
psSAR 1g [W/kg]	5.09	5.16
psSAR 10g [W/kg]	2.39	2.42
Power Drift [dB]	0.01	-0.02
Power Scaling	Disabled	Disabled
Scaling Factor [dB]		
TSL Correction	Positive / Negative	Positive / Negative
M2/M1 [%]		79.8
Dist 3dB Peak [mm]		9.0



; Name : DAK 3.5 Head 20.45 deg.C 2023-Oct-14 18:50:32						
; Date : 2023-Oct-14 18:50:32						
; Temperature(C) : 20.45						
; Probe : DAK 3.5						
; Network Analyzer : Agilent Network Analyzer						
	Measured data		Target data		Deviation %	
; MHz	EpsR	Sigma(S/m)	EpsR	Sigma(S/m)	EpsR	Sigma(S/m)
2400	39.5269	1.7534	39.3	1.7567	0.5774	-0.1879
2412	39.5086	1.7607	39.276	1.7671	0.5922	-0.3622
2412	39.5086	1.7608	39.276	1.7671	0.5922	-0.3565
2412	39.5084	1.7608	39.276	1.7671	0.5917	-0.3565
2412	39.5084	1.7608	39.276	1.7671	0.5917	-0.3565
2412	39.5084	1.7609	39.276	1.7671	0.5917	-0.3509
2412	39.5081	1.7609	39.276	1.7671	0.5909	-0.3509
2412	39.5079	1.7609	39.276	1.7671	0.5904	-0.3509
2412	39.5077	1.761	39.276	1.7671	0.5899	-0.3452
2412	39.5074	1.761	39.276	1.7671	0.5892	-0.3452
2412	39.507	1.7611	39.276	1.7671	0.5881	-0.3395
2412	39.5067	1.7611	39.276	1.7671	0.5874	-0.3395
2412	39.5063	1.7612	39.276	1.7671	0.5864	-0.3339
2412	39.5061	1.7612	39.276	1.7671	0.5859	-0.3339
2412	39.5058	1.7612	39.276	1.7671	0.5851	-0.3339
2412	39.5057	1.7613	39.276	1.7671	0.5848	-0.3282
2412	39.5056	1.7613	39.276	1.7671	0.5846	-0.3282
2412	39.5056	1.7613	39.276	1.7671	0.5846	-0.3282
2412	39.5055	1.7613	39.276	1.7671	0.5843	-0.3282
2412	39.5055	1.7613	39.276	1.7671	0.5843	-0.3282
2437	39.4526	1.7807	39.23	1.79	0.5674	-0.5196
2437	39.4526	1.7807	39.23	1.79	0.5674	-0.5196
2437	39.4526	1.7808	39.23	1.79	0.5674	-0.514
2437	39.4526	1.7808	39.23	1.79	0.5674	-0.514
2437	39.4527	1.7809	39.23	1.79	0.5677	-0.5084
2437	39.4528	1.7809	39.23	1.79	0.5679	-0.5084
2437	39.4528	1.7809	39.23	1.79	0.5679	-0.5084
2437	39.4528	1.7809	39.23	1.79	0.5679	-0.5084
2437	39.4528	1.781	39.23	1.79	0.5679	-0.5028
2437	39.4527	1.781	39.23	1.79	0.5677	-0.5028
2437	39.4527	1.781	39.23	1.79	0.5677	-0.5028
2437	39.4526	1.7811	39.23	1.79	0.5674	-0.4972
2437	39.4525	1.7811	39.23	1.79	0.5672	-0.4972

2437	39.4523	1.7811	39.23	1.79	0.5667	-0.4972
2437	39.4522	1.7812	39.23	1.79	0.5664	-0.4916
2437	39.4521	1.7812	39.23	1.79	0.5661	-0.4916
2437	39.4519	1.7813	39.23	1.79	0.5656	-0.486
2437	39.4517	1.7814	39.23	1.79	0.5651	-0.4804
2437	39.4515	1.7815	39.23	1.79	0.5646	-0.4749
2462	39.4254	1.7997	39.184	1.8128	0.6161	-0.7226
2462	39.4255	1.7997	39.184	1.8128	0.6163	-0.7226
2462	39.4255	1.7998	39.184	1.8128	0.6163	-0.7171
2462	39.4255	1.7998	39.184	1.8128	0.6163	-0.7171
2462	39.4254	1.7999	39.184	1.8128	0.6161	-0.7116
2462	39.4254	1.7999	39.184	1.8128	0.6161	-0.7116
2462	39.4254	1.7999	39.184	1.8128	0.6161	-0.7116
2462	39.4254	1.8	39.184	1.8128	0.6161	-0.7061
2462	39.4253	1.8	39.184	1.8128	0.6158	-0.7061
2462	39.4252	1.8001	39.184	1.8128	0.6156	-0.7006
2462	39.4252	1.8001	39.184	1.8128	0.6156	-0.7006
2462	39.4251	1.8002	39.184	1.8128	0.6153	-0.6951
2462	39.425	1.8002	39.184	1.8128	0.615	-0.6951
2462	39.4249	1.8002	39.184	1.8128	0.6148	-0.6951
2462	39.4249	1.8003	39.184	1.8128	0.6148	-0.6895
2462	39.4248	1.8003	39.184	1.8128	0.6145	-0.6895
2462	39.4247	1.8003	39.184	1.8128	0.6143	-0.6895
2462	39.4247	1.8003	39.184	1.8128	0.6143	-0.6895
2462	39.4246	1.8004	39.184	1.8128	0.614	-0.684
2480	39.3988	1.8129	39.1547	1.8363	0.6234	-1.2743

## Measurement Report for Dipole(2450.000MHz)

### Exposure Conditions

Phantom Section, TSL	Frequency [MHz], Channel Number	Conversion Factor	TSL Conductivity [S/m]	TSL Permittivity
Flat, HSL	2450.000, 0	6.77	1.79	39.4

### Hardware Setup

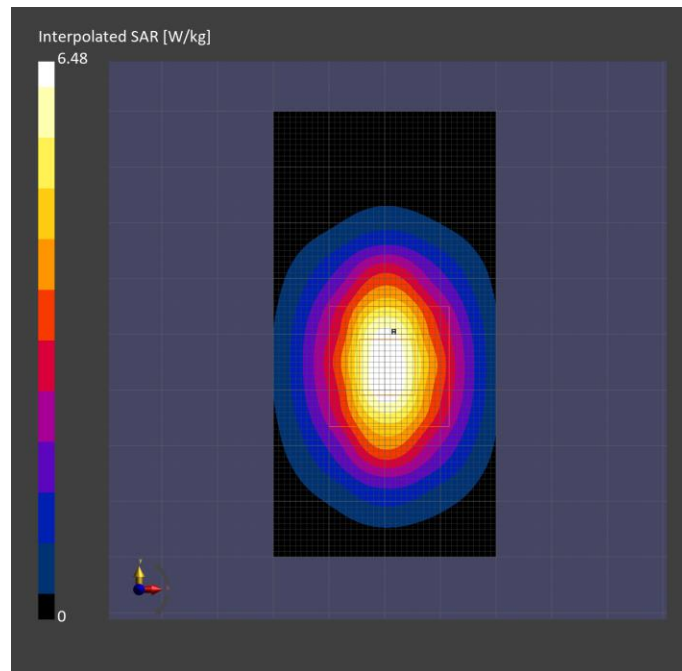
Phantom	TSL, Measured Date	Probe, Calibration Date	DAE, Calibration Date
ELI V8.0 (20deg probe tilt) - 2191	HBBL-600-10000 SLAAHU16BC221222-1, 2023-Oct-14	EX3DV4 - SN7783, 2023-01-24	DAE4 Sn1724, 2023-01-23

### Scan Setup

	Area Scan	Zoom Scan
Grid Extents [mm]	40.0 x 80.0	30.0 x 30.0 x 30.0
Grid Steps [mm]	10.0 x 10.0	5.0 x 5.0 x 1.5
Sensor Surface [mm]	3.0	1.4
Graded Grid	N/A	Yes
Grading Ratio	N/A	1.5
MAIA	N/A	N/A
Surface Detection	All points	All points
Scan Method	Measured	Measured

### Measurement Results

	Area Scan	Zoom Scan
Date	2023-10-14, 19:01	2023-10-14, 19:10
psSAR 1g [W/kg]	5.07	5.14
psSAR 10g [W/kg]	2.36	2.41
Power Drift [dB]	0.02	0.02
Power Scaling	Disabled	Disabled
Scaling Factor [dB]		
TSL Correction	Positive / Negative	Positive / Negative
M2/M1 [%]		79.9
Dist 3dB Peak [mm]		9.0



; Name : DAK 3.5 Head 20.29 deg.C 2023-Oct-18 16:48:46						
; Date : 2023-Oct-18 16:48:46						
; Temperature(C) : 20.29						
; Probe : DAK 3.5						
; Network Analyzer : Agilent Network Analyzer						
	Measured data		Target data		Deviation %	
; MHz	EpsR	Sigma(S/m)	EpsR	Sigma(S/m)	EpsR	Sigma(S/m)
2400	39.1373	1.7442	39.3	1.7567	-0.414	-0.7116
2412	39.1164	1.7516	39.276	1.7671	-0.4064	-0.8771
2412	39.1161	1.7516	39.276	1.7671	-0.4071	-0.8771
2412	39.1158	1.7517	39.276	1.7671	-0.4079	-0.8715
2412	39.1156	1.7517	39.276	1.7671	-0.4084	-0.8715
2412	39.1153	1.7518	39.276	1.7671	-0.4092	-0.8658
2412	39.1152	1.7518	39.276	1.7671	-0.4094	-0.8658
2412	39.115	1.7518	39.276	1.7671	-0.4099	-0.8658
2412	39.1149	1.7518	39.276	1.7671	-0.4102	-0.8658
2412	39.1148	1.7518	39.276	1.7671	-0.4104	-0.8658
2412	39.1147	1.7519	39.276	1.7671	-0.4107	-0.8602
2412	39.1147	1.7519	39.276	1.7671	-0.4107	-0.8602
2412	39.1146	1.7519	39.276	1.7671	-0.4109	-0.8602
2412	39.1146	1.752	39.276	1.7671	-0.4109	-0.8545
2412	39.1147	1.752	39.276	1.7671	-0.4107	-0.8545
2412	39.1147	1.752	39.276	1.7671	-0.4107	-0.8545
2412	39.1148	1.752	39.276	1.7671	-0.4104	-0.8545
2412	39.1148	1.752	39.276	1.7671	-0.4104	-0.8545
2412	39.1149	1.7521	39.276	1.7671	-0.4102	-0.8488
2412	39.1148	1.7521	39.276	1.7671	-0.4104	-0.8488
2437	39.0633	1.7716	39.23	1.79	-0.4249	-1.0279
2437	39.0632	1.7716	39.23	1.79	-0.4252	-1.0279
2437	39.0631	1.7717	39.23	1.79	-0.4254	-1.0223
2437	39.063	1.7717	39.23	1.79	-0.4257	-1.0223
2437	39.0629	1.7718	39.23	1.79	-0.4259	-1.0168
2437	39.0628	1.7718	39.23	1.79	-0.4262	-1.0168
2437	39.0626	1.7719	39.23	1.79	-0.4267	-1.0112
2437	39.0626	1.7719	39.23	1.79	-0.4267	-1.0112
2437	39.0625	1.772	39.23	1.79	-0.427	-1.0056
2437	39.0623	1.7721	39.23	1.79	-0.4275	-1
2437	39.0622	1.7722	39.23	1.79	-0.4277	-0.9944
2437	39.0621	1.7722	39.23	1.79	-0.428	-0.9944
2437	39.062	1.7723	39.23	1.79	-0.4282	-0.9888

2437	39.062	1.7724	39.23	1.79	-0.4282	-0.9832
2437	39.0619	1.7725	39.23	1.79	-0.4285	-0.9777
2437	39.062	1.7725	39.23	1.79	-0.4282	-0.9777
2437	39.0619	1.7726	39.23	1.79	-0.4285	-0.9721
2437	39.0619	1.7726	39.23	1.79	-0.4285	-0.9721
2437	39.0618	1.7726	39.23	1.79	-0.4288	-0.9721
2462	39.0372	1.7898	39.184	1.8128	-0.3746	-1.2688
2462	39.037	1.7899	39.184	1.8128	-0.3752	-1.2632
2462	39.0368	1.7899	39.184	1.8128	-0.3757	-1.2632
2462	39.0367	1.7899	39.184	1.8128	-0.3759	-1.2632
2462	39.0365	1.7899	39.184	1.8128	-0.3764	-1.2632
2462	39.0363	1.79	39.184	1.8128	-0.3769	-1.2577
2462	39.0362	1.79	39.184	1.8128	-0.3772	-1.2577
2462	39.0361	1.79	39.184	1.8128	-0.3774	-1.2577
2462	39.036	1.79	39.184	1.8128	-0.3777	-1.2577
2462	39.0359	1.7901	39.184	1.8128	-0.378	-1.2522
2462	39.0357	1.7901	39.184	1.8128	-0.3785	-1.2522
2462	39.0356	1.7902	39.184	1.8128	-0.3787	-1.2467
2462	39.0356	1.7902	39.184	1.8128	-0.3787	-1.2467
2462	39.0357	1.7902	39.184	1.8128	-0.3785	-1.2467
2462	39.0357	1.7902	39.184	1.8128	-0.3785	-1.2467
2462	39.0358	1.7903	39.184	1.8128	-0.3782	-1.2412
2462	39.0359	1.7903	39.184	1.8128	-0.378	-1.2412
2462	39.036	1.7903	39.184	1.8128	-0.3777	-1.2412
2462	39.0361	1.7904	39.184	1.8128	-0.3774	-1.2357
2480	39.0018	1.8021	39.1547	1.8363	-0.3905	-1.8624

## Measurement Report for Dipole(2450.000MHz)

### Exposure Conditions

Phantom Section, TSL	Frequency [MHz], Channel Number	Conversion Factor	TSL Conductivity [S/m]	TSL Permittivity
Flat, HSL	2450.000, 0	6.77	1.78	39.0

### Hardware Setup

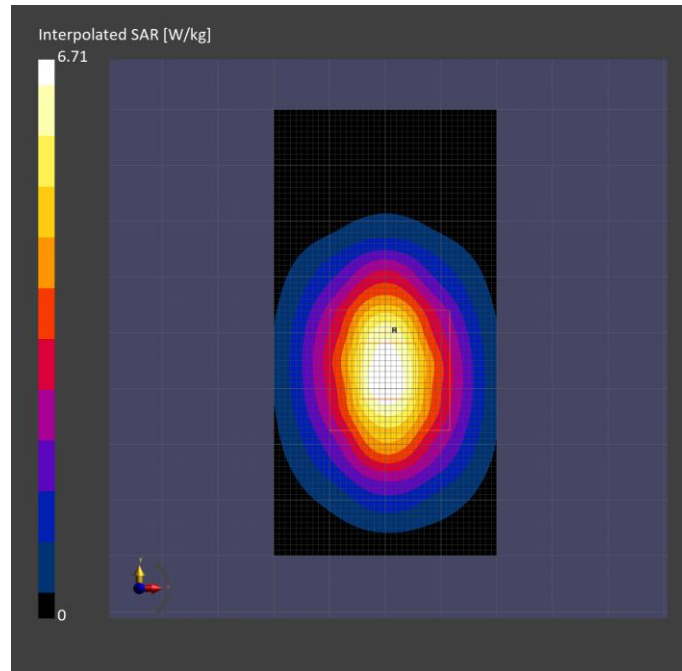
Phantom	TSL, Measured Date	Probe, Calibration Date	DAE, Calibration Date
ELI V8.0 (20deg probe tilt) - 2191	HBBL-600-10000 SLAAHU16BC221222-1, 2023-Oct-18	EX3DV4 - SN7783, 2023-01-24	DAE4 Sn1724, 2023-01-23

### Scan Setup

	Area Scan	Zoom Scan
Grid Extents [mm]	40.0 x 80.0	30.0 x 30.0 x 30.0
Grid Steps [mm]	10.0 x 10.0	5.0 x 5.0 x 1.5
Sensor Surface [mm]	3.0	1.4
Graded Grid	N/A	Yes
Grading Ratio	N/A	1.5
MAIA	N/A	N/A
Surface Detection	All points	All points
Scan Method	Measured	Measured

### Measurement Results

	Area Scan	Zoom Scan
Date	2023-10-18, 17:08	2023-10-18, 17:17
psSAR 1g [W/kg]	5.16	5.20
psSAR 10g [W/kg]	2.39	2.43
Power Drift [dB]	0.00	-0.06
Power Scaling	Disabled	Disabled
Scaling Factor [dB]		
TSL Correction	Positive / Negative	Positive / Negative
M2/M1 [%]		79.3
Dist 3dB Peak [mm]		9.1



; Name : DAK 3.5 Head 19.16 deg.C 2023-Nov-09 17:28:46						
; Date : 2023-Nov-09 17:28:46						
; Temperature(C) : 19.16						
; Probe : DAK 3.5						
; Network Analyzer : Agilent Network Analyzer						
	Measured data		Target data		Deviation %	
; MHz	EpsR	Sigma(S/m)	EpsR	Sigma(S/m)	EpsR	Sigma(S/m)
2400	37.6301	1.7591	39.3	1.7567	-4.2491	0.1366
2412	37.5921	1.7668	39.276	1.7671	-4.2874	-0.017
2412	37.5919	1.7669	39.276	1.7671	-4.2879	-0.0113
2412	37.5917	1.7669	39.276	1.7671	-4.2884	-0.0113
2412	37.5914	1.7669	39.276	1.7671	-4.2891	-0.0113
2412	37.5912	1.767	39.276	1.7671	-4.2896	-0.0057
2412	37.591	1.767	39.276	1.7671	-4.2902	-0.0057
2412	37.5907	1.7671	39.276	1.7671	-4.2909	0
2412	37.5906	1.7671	39.276	1.7671	-4.2912	0
2412	37.5905	1.7671	39.276	1.7671	-4.2914	0
2412	37.5903	1.7672	39.276	1.7671	-4.2919	0.0057
2412	37.5901	1.7672	39.276	1.7671	-4.2924	0.0057
2412	37.5899	1.7673	39.276	1.7671	-4.293	0.0113
2412	37.5897	1.7673	39.276	1.7671	-4.2935	0.0113
2412	37.5895	1.7673	39.276	1.7671	-4.294	0.0113
2412	37.5893	1.7674	39.276	1.7671	-4.2945	0.017
2412	37.5891	1.7674	39.276	1.7671	-4.295	0.017
2412	37.5889	1.7674	39.276	1.7671	-4.2955	0.017
2412	37.5885	1.7675	39.276	1.7671	-4.2965	0.0226
2412	37.5883	1.7675	39.276	1.7671	-4.297	0.0226
2437	37.5146	1.7895	39.23	1.79	-4.3727	-0.0279
2437	37.5145	1.7895	39.23	1.79	-4.3729	-0.0279
2437	37.5144	1.7896	39.23	1.79	-4.3732	-0.0223
2437	37.5143	1.7896	39.23	1.79	-4.3734	-0.0223
2437	37.5142	1.7897	39.23	1.79	-4.3737	-0.0168
2437	37.5141	1.7897	39.23	1.79	-4.3739	-0.0168
2437	37.5141	1.7898	39.23	1.79	-4.3739	-0.0112
2437	37.5139	1.7898	39.23	1.79	-4.3745	-0.0112
2437	37.5138	1.7899	39.23	1.79	-4.3747	-0.0056
2437	37.5137	1.7899	39.23	1.79	-4.375	-0.0056
2437	37.5137	1.79	39.23	1.79	-4.375	0
2437	37.5137	1.79	39.23	1.79	-4.375	0
2437	37.5138	1.79	39.23	1.79	-4.3747	0



2437	37.5137	1.7901	39.23	1.79	-4.375	0.0056
2437	37.5136	1.7901	39.23	1.79	-4.3752	0.0056
2437	37.5136	1.7902	39.23	1.79	-4.3752	0.0112
2437	37.5136	1.7902	39.23	1.79	-4.3752	0.0112
2437	37.5135	1.7903	39.23	1.79	-4.3755	0.0168
2437	37.5134	1.7903	39.23	1.79	-4.3757	0.0168
2462	37.5111	1.8108	39.184	1.8128	-4.2693	-0.1103
2462	37.5116	1.8109	39.184	1.8128	-4.2681	-0.1048
2462	37.5121	1.811	39.184	1.8128	-4.2668	-0.0993
2462	37.5126	1.8111	39.184	1.8128	-4.2655	-0.0938
2462	37.5131	1.8112	39.184	1.8128	-4.2642	-0.0883
2462	37.5135	1.8112	39.184	1.8128	-4.2632	-0.0883
2462	37.5137	1.8113	39.184	1.8128	-4.2627	-0.0827
2462	37.5138	1.8114	39.184	1.8128	-4.2625	-0.0772
2462	37.5139	1.8114	39.184	1.8128	-4.2622	-0.0772
2462	37.5138	1.8115	39.184	1.8128	-4.2625	-0.0717
2462	37.5136	1.8115	39.184	1.8128	-4.263	-0.0717
2462	37.5134	1.8115	39.184	1.8128	-4.2635	-0.0717
2462	37.5131	1.8115	39.184	1.8128	-4.2642	-0.0717
2462	37.5127	1.8115	39.184	1.8128	-4.2653	-0.0717
2462	37.5122	1.8116	39.184	1.8128	-4.2665	-0.0662
2462	37.5118	1.8116	39.184	1.8128	-4.2676	-0.0662
2462	37.5113	1.8116	39.184	1.8128	-4.2688	-0.0662
2462	37.5109	1.8115	39.184	1.8128	-4.2699	-0.0717
2462	37.5106	1.8115	39.184	1.8128	-4.2706	-0.0717
2480	37.5055	1.824	39.1547	1.8363	-4.212	-0.6698

## Measurement Report for Dipole(2450.000MHz)

### Exposure Conditions

Phantom Section, TSL	Frequency [MHz], Channel Number	Conversion Factor	TSL Conductivity [S/m]	TSL Permittivity
Flat, HSL	2450.000, 0	6.77	1.80	37.5

### Hardware Setup

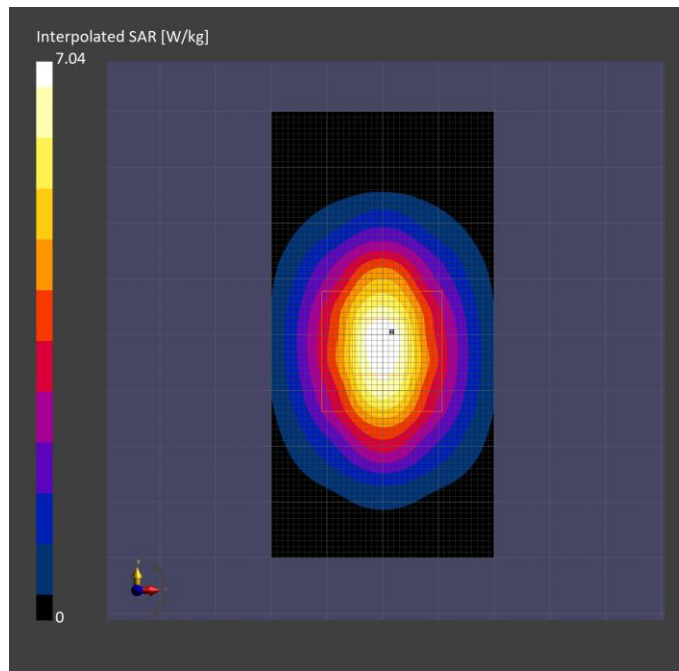
Phantom	TSL, Measured Date	Probe, Calibration Date	DAE, Calibration Date
ELI V8.0 (20deg probe tilt) - 2191	HBBL-600-10000 SLAAHU16BC221222-1, 2023- Nov-09	EX3DV4 - SN7783, 2023-01-24	DAE4 Sn1724, 2023-01-23

### Scan Setup

	Area Scan	Zoom Scan
Grid Extents [mm]	40.0 x 80.0	30.0 x 30.0 x 30.0
Grid Steps [mm]	10.0 x 10.0	5.0 x 5.0 x 1.5
Sensor Surface [mm]	3.0	1.4
Graded Grid	N/A	Yes
Grading Ratio	N/A	1.5
MAIA	N/A	N/A
Surface Detection	VMS + 6p	VMS + 6p
Scan Method	Measured	Measured

### Measurement Results

	Area Scan	Zoom Scan
Date	2023-11-09, 17:44	2023-11-09, 17:50
psSAR 1g [W/kg]	5.33	5.31
psSAR 10g [W/kg]	2.49	2.47
Power Drift [dB]	-0.00	-0.00
Power Scaling	Disabled	Disabled
Scaling Factor [dB]		
TSL Correction	Positive / Negative	Positive / Negative
M2/M1 [%]		78.8
Dist 3dB Peak [mm]		9.0



**5250MHz**

; Name : DAK 3.5 Head 24.32 deg.C 2023-Dec-19 13:20:06						
; Date : 2023-Dec-19 13:20:06						
; Temperature(C) : 24.32						
; Probe : DAK 3.5						
; Network Analyzer : Agilent Network Analyzer						
	Measured data		Target data		Deviation %	
; MHz	EpsR	Sigma(S/m)	EpsR	Sigma(S/m)	EpsR	Sigma(S/m)
5150	35.5706	4.3952	36.0429	4.6038	-1.3104	-4.531
5180	35.4987	4.4165	36.0086	4.6345	-1.4161	-4.7039
5180	35.4986	4.4168	36.0086	4.6345	-1.4163	-4.6974
5180	35.4985	4.417	36.0086	4.6345	-1.4166	-4.6931
5180	35.4983	4.4172	36.0086	4.6345	-1.4172	-4.6887
5180	35.4981	4.4175	36.0086	4.6345	-1.4177	-4.6823
5180	35.4979	4.4177	36.0086	4.6345	-1.4183	-4.678
5180	35.4978	4.4179	36.0086	4.6345	-1.4186	-4.6736
5180	35.4975	4.4181	36.0086	4.6345	-1.4194	-4.6693
5180	35.4974	4.4183	36.0086	4.6345	-1.4197	-4.665
5190	35.4897	4.4332	35.9971	4.6448	-1.4096	-4.5556
5190	35.4897	4.4334	35.9971	4.6448	-1.4096	-4.5513
5190	35.4896	4.4336	35.9971	4.6448	-1.4098	-4.547
5190	35.4895	4.4338	35.9971	4.6448	-1.4101	-4.5427
5190	35.4897	4.434	35.9971	4.6448	-1.4096	-4.5384
5190	35.49	4.4341	35.9971	4.6448	-1.4087	-4.5363
5190	35.4902	4.4343	35.9971	4.6448	-1.4082	-4.5319
5190	35.4904	4.4345	35.9971	4.6448	-1.4076	-4.5276
5200	35.4904	4.4478	35.9857	4.6550	-1.3764	-4.4511
5200	35.4905	4.4479	35.9857	4.6550	-1.3761	-4.449
5200	35.4906	4.4481	35.9857	4.6550	-1.3758	-4.4447
5200	35.4906	4.4483	35.9857	4.6550	-1.3758	-4.4404
5200	35.4907	4.4485	35.9857	4.6550	-1.3755	-4.4361
5200	35.4908	4.4486	35.9857	4.6550	-1.3753	-4.4339
5200	35.4908	4.4489	35.9857	4.6550	-1.3753	-4.4275
5210	35.4957	4.4586	35.9743	4.6653	-1.3304	-4.4306
5210	35.4957	4.4587	35.9743	4.6653	-1.3304	-4.4284
5210	35.4956	4.4587	35.9743	4.6653	-1.3307	-4.4284
5210	35.4956	4.4588	35.9743	4.6653	-1.3307	-4.4263
5210	35.4956	4.4588	35.9743	4.6653	-1.3307	-4.4263
5210	35.4956	4.4589	35.9743	4.6653	-1.3307	-4.4242

5210	35.4956	4.459	35.9743	4.6653	-1.3307	-4.422
5210	35.4956	4.4592	35.9743	4.6653	-1.3307	-4.4177
5230	35.4788	4.4646	35.9514	4.6858	-1.3146	-4.7206
5230	35.4785	4.4646	35.9514	4.6858	-1.3154	-4.7206
5230	35.4782	4.4646	35.9514	4.6858	-1.3162	-4.7206
5230	35.4779	4.4646	35.9514	4.6858	-1.3171	-4.7206
5230	35.4775	4.4646	35.9514	4.6858	-1.3182	-4.7206
5230	35.4772	4.4646	35.9514	4.6858	-1.319	-4.7206
5230	35.4769	4.4646	35.9514	4.6858	-1.3198	-4.7206
5230	35.4765	4.4646	35.9514	4.6858	-1.3209	-4.7206
5240	35.4407	4.467	35.9400	4.6960	-1.3893	-4.8765
5240	35.4401	4.467	35.9400	4.6960	-1.3909	-4.8765
5240	35.4394	4.4671	35.9400	4.6960	-1.3929	-4.8744
5240	35.4388	4.4672	35.9400	4.6960	-1.3945	-4.8722
5240	35.4383	4.4672	35.9400	4.6960	-1.3959	-4.8722
5240	35.4377	4.4673	35.9400	4.6960	-1.3976	-4.8701
5240	35.4371	4.4674	35.9400	4.6960	-1.3993	-4.868
5260	35.3385	4.4896	35.9171	4.7165	-1.6109	-4.8108
5260	35.3378	4.4898	35.9171	4.7165	-1.6129	-4.8065
5260	35.3371	4.4901	35.9171	4.7165	-1.6148	-4.8002
5260	35.3364	4.4903	35.9171	4.7165	-1.6168	-4.7959
5260	35.3357	4.4905	35.9171	4.7165	-1.6187	-4.7917
5260	35.3351	4.4908	35.9171	4.7165	-1.6204	-4.7853
5260	35.3344	4.491	35.9171	4.7165	-1.6223	-4.7811
5260	35.3338	4.4912	35.9171	4.7165	-1.624	-4.7768
5260	35.3332	4.4915	35.9171	4.7165	-1.6257	-4.7705
5280	35.2827	4.5283	35.8943	4.7370	-1.7039	-4.4057
5280	35.2826	4.5285	35.8943	4.7370	-1.7042	-4.4015
5280	35.2824	4.5288	35.8943	4.7370	-1.7047	-4.3952
5280	35.2821	4.5291	35.8943	4.7370	-1.7056	-4.3889
5280	35.2821	4.5293	35.8943	4.7370	-1.7056	-4.3846
5280	35.282	4.5296	35.8943	4.7370	-1.7058	-4.3783
5280	35.282	4.5298	35.8943	4.7370	-1.7058	-4.3741
5290	35.3014	4.5254	35.8829	4.7473	-1.6205	-4.6742
5290	35.3021	4.5249	35.8829	4.7473	-1.6186	-4.6848
5290	35.3026	4.5247	35.8829	4.7473	-1.6172	-4.689
5290	35.303	4.5247	35.8829	4.7473	-1.6161	-4.689
5290	35.3032	4.5247	35.8829	4.7473	-1.6155	-4.689
5290	35.3032	4.5249	35.8829	4.7473	-1.6155	-4.6848
5290	35.3028	4.5252	35.8829	4.7473	-1.6166	-4.6784
5290	35.3022	4.5257	35.8829	4.7473	-1.6183	-4.6679

5300	35.2877	4.5512	35.8714	4.7575	-1.6272	-4.3363
5300	35.2873	4.5515	35.8714	4.7575	-1.6283	-4.33
5300	35.2869	4.5518	35.8714	4.7575	-1.6294	-4.3237
5300	35.2865	4.5521	35.8714	4.7575	-1.6305	-4.3174
5300	35.2862	4.5524	35.8714	4.7575	-1.6314	-4.3111
5300	35.2859	4.5527	35.8714	4.7575	-1.6322	-4.3048
5300	35.2857	4.5529	35.8714	4.7575	-1.6328	-4.3006
5300	35.2856	4.5531	35.8714	4.7575	-1.6331	-4.2964
5300	35.2857	4.5533	35.8714	4.7575	-1.6328	-4.2922
5310	35.2838	4.5747	35.8600	4.7678	-1.6068	-4.0501
5310	35.284	4.5749	35.8600	4.7678	-1.6062	-4.0459
5310	35.2841	4.5751	35.8600	4.7678	-1.606	-4.0417
5310	35.2842	4.5754	35.8600	4.7678	-1.6057	-4.0354
5310	35.2843	4.5756	35.8600	4.7678	-1.6054	-4.0312
5310	35.2844	4.5759	35.8600	4.7678	-1.6051	-4.0249
5310	35.2844	4.5761	35.8600	4.7678	-1.6051	-4.0207
5310	35.2844	4.5764	35.8600	4.7678	-1.6051	-4.0144
5320	35.2919	4.5914	35.8486	4.7780	-1.5529	-3.9054
5320	35.292	4.5916	35.8486	4.7780	-1.5526	-3.9012
5320	35.2922	4.5918	35.8486	4.7780	-1.5521	-3.897
5320	35.2924	4.592	35.8486	4.7780	-1.5515	-3.8928
5320	35.2926	4.5922	35.8486	4.7780	-1.551	-3.8887
5320	35.2928	4.5923	35.8486	4.7780	-1.5504	-3.8866
5320	35.293	4.5923	35.8486	4.7780	-1.5499	-3.8866
5350	35.2664	4.601	35.8500	4.8100	-1.6279	-4.3451

## Measurement Report for Dipole(5250.000MHz)

### Exposure Conditions

Phantom Section, TSL	Frequency [MHz], Channel Number	Conversion Factor	TSL Conductivity [S/m]	TSL Permittivity
Flat, HSL	5250.000, 0	4.98	4.48	35.4

### Hardware Setup

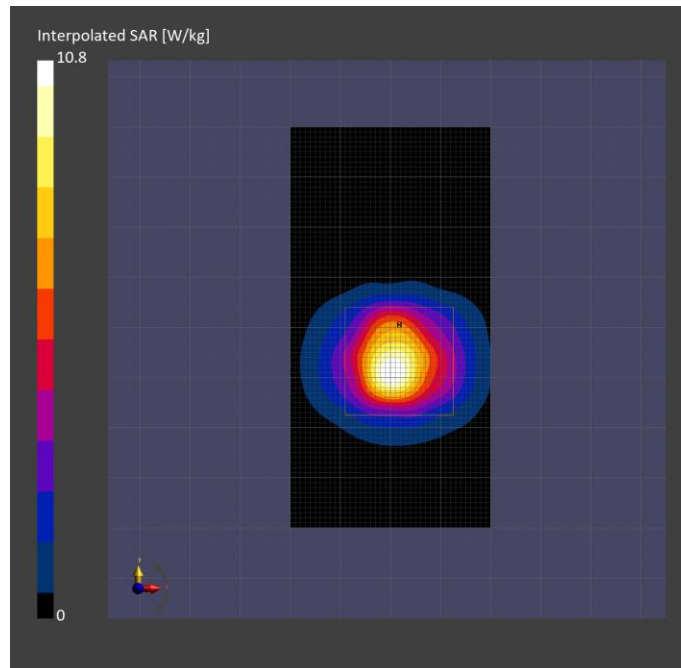
Phantom	TSL, Measured Date	Probe, Calibration Date	DAE, Calibration Date
ELI V8.0 (20deg probe tilt) - 2191	HBBL-600-10000 SLAAHU16BC221222-1, 2023- Dec-19	EX3DV4 - SN7783, 2023-01-24	DAE4 Sn1724, 2023-01-23

### Scan Setup

	Area Scan	Zoom Scan
Grid Extents [mm]	40.0 x 80.0	22.0 x 22.0 x 22.0
Grid Steps [mm]	10.0 x 10.0	4.0 x 4.0 x 1.4
Sensor Surface [mm]	3.0	1.4
Graded Grid	N/A	Yes
Grading Ratio	N/A	1.4
MAIA	N/A	N/A
Surface Detection	All points	VMS + 6p
Scan Method	Measured	Measured

### Measurement Results

	Area Scan	Zoom Scan
Date	2023-12-19, 13:47	2023-12-19, 13:55
psSAR 1g [W/kg]	7.05	7.99
psSAR 10g [W/kg]	2.12	2.28
Power Drift [dB]	-0.03	0.02
Power Scaling	Disabled	Disabled
Scaling Factor [dB]		
TSL Correction	Positive / Negative	Positive / Negative
M2/M1 [%]		63.4
Dist 3dB Peak [mm]		7.3



; Name : DAK 3.5 Head 18 deg.C 2023-Dec-26 20:42:11						
; Date : 2023-Dec-26 20:42:11						
; Temperature(C) : 18						
; Probe : DAK 3.5						
; Network Analyzer : Agilent Network Analyzer						
	Measured data		Target data		Deviation %	
; MHz	EpsR	Sigma(S/m)	EpsR	Sigma(S/m)	EpsR	Sigma(S/m)
5150	35.1208	4.4606	36.0429	4.6038	-2.5583	-3.1105
5180	35.0585	4.4934	36.0086	4.6345	-2.6385	-3.0446
5180	35.0579	4.4934	36.0086	4.6345	-2.6402	-3.0446
5180	35.0575	4.4934	36.0086	4.6345	-2.6413	-3.0446
5180	35.0569	4.4933	36.0086	4.6345	-2.643	-3.0467
5180	35.0565	4.4933	36.0086	4.6345	-2.6441	-3.0467
5180	35.0561	4.4933	36.0086	4.6345	-2.6452	-3.0467
5180	35.0554	4.4933	36.0086	4.6345	-2.6471	-3.0467
5180	35.0548	4.4933	36.0086	4.6345	-2.6488	-3.0467
5180	35.0544	4.4932	36.0086	4.6345	-2.6499	-3.0489
5190	35.0191	4.4978	35.9971	4.6448	-2.7169	-3.1648
5190	35.0188	4.4978	35.9971	4.6448	-2.7177	-3.1648
5190	35.0185	4.4979	35.9971	4.6448	-2.7186	-3.1627
5190	35.0182	4.498	35.9971	4.6448	-2.7194	-3.1605
5190	35.0179	4.498	35.9971	4.6448	-2.7202	-3.1605
5190	35.0175	4.4981	35.9971	4.6448	-2.7213	-3.1584
5190	35.0172	4.4982	35.9971	4.6448	-2.7222	-3.1562
5190	35.0167	4.4983	35.9971	4.6448	-2.7236	-3.1541
5200	34.979	4.5059	35.9857	4.6550	-2.7975	-3.203
5200	34.9784	4.506	35.9857	4.6550	-2.7992	-3.2009
5200	34.9777	4.506	35.9857	4.6550	-2.8011	-3.2009
5200	34.977	4.5061	35.9857	4.6550	-2.8031	-3.1987
5200	34.9763	4.5061	35.9857	4.6550	-2.805	-3.1987
5200	34.9757	4.5061	35.9857	4.6550	-2.8067	-3.1987
5200	34.9751	4.5062	35.9857	4.6550	-2.8083	-3.1966
5210	34.9475	4.5143	35.9743	4.6653	-2.8543	-3.2367
5210	34.947	4.5144	35.9743	4.6653	-2.8556	-3.2345
5210	34.9465	4.5145	35.9743	4.6653	-2.857	-3.2324
5210	34.9458	4.5146	35.9743	4.6653	-2.859	-3.2302
5210	34.9452	4.5146	35.9743	4.6653	-2.8607	-3.2302
5210	34.9446	4.5147	35.9743	4.6653	-2.8623	-3.2281
5210	34.944	4.5148	35.9743	4.6653	-2.864	-3.2259
5210	34.9435	4.5149	35.9743	4.6653	-2.8654	-3.2238

5230	34.8995	4.5332	35.9514	4.6858	-2.9259	-3.2566
5230	34.8992	4.5333	35.9514	4.6858	-2.9267	-3.2545
5230	34.8989	4.5334	35.9514	4.6858	-2.9276	-3.2524
5230	34.8985	4.5334	35.9514	4.6858	-2.9287	-3.2524
5230	34.8982	4.5335	35.9514	4.6858	-2.9295	-3.2502
5230	34.898	4.5337	35.9514	4.6858	-2.9301	-3.246
5230	34.8977	4.5338	35.9514	4.6858	-2.9309	-3.2438
5230	34.8975	4.5339	35.9514	4.6858	-2.9315	-3.2417
5240	34.8765	4.5461	35.9400	4.6960	-2.9591	-3.1921
5240	34.8762	4.5463	35.9400	4.6960	-2.9599	-3.1878
5240	34.876	4.5465	35.9400	4.6960	-2.9605	-3.1836
5240	34.8758	4.5467	35.9400	4.6960	-2.961	-3.1793
5240	34.8756	4.547	35.9400	4.6960	-2.9616	-3.1729
5240	34.8753	4.5472	35.9400	4.6960	-2.9624	-3.1687
5240	34.8751	4.5474	35.9400	4.6960	-2.963	-3.1644
5260	34.8439	4.5852	35.9171	4.7165	-2.988	-2.7838
5260	34.8438	4.5855	35.9171	4.7165	-2.9883	-2.7775
5260	34.8437	4.5857	35.9171	4.7165	-2.9885	-2.7732
5260	34.8437	4.5859	35.9171	4.7165	-2.9885	-2.769
5260	34.8436	4.5862	35.9171	4.7165	-2.9888	-2.7626
5260	34.8435	4.5865	35.9171	4.7165	-2.9891	-2.7563
5260	34.8434	4.5867	35.9171	4.7165	-2.9894	-2.752
5260	34.8434	4.587	35.9171	4.7165	-2.9894	-2.7457
5260	34.8436	4.5873	35.9171	4.7165	-2.9888	-2.7393
5280	34.8503	4.6236	35.8943	4.7370	-2.9085	-2.3939
5280	34.8502	4.6238	35.8943	4.7370	-2.9088	-2.3897
5280	34.8503	4.6239	35.8943	4.7370	-2.9085	-2.3876
5280	34.8501	4.6241	35.8943	4.7370	-2.9091	-2.3834
5280	34.8499	4.6243	35.8943	4.7370	-2.9097	-2.3791
5280	34.8498	4.6244	35.8943	4.7370	-2.9099	-2.377
5280	34.8497	4.6246	35.8943	4.7370	-2.9102	-2.3728
5290	34.8384	4.6311	35.8829	4.7473	-2.9109	-2.4477
5290	34.8381	4.6311	35.8829	4.7473	-2.9117	-2.4477
5290	34.8377	4.6312	35.8829	4.7473	-2.9128	-2.4456
5290	34.8376	4.6313	35.8829	4.7473	-2.9131	-2.4435
5290	34.8376	4.6314	35.8829	4.7473	-2.9131	-2.4414
5290	34.8375	4.6315	35.8829	4.7473	-2.9134	-2.4393
5290	34.8376	4.6316	35.8829	4.7473	-2.9131	-2.4372
5290	34.8376	4.6318	35.8829	4.7473	-2.9131	-2.433
5300	34.8199	4.6405	35.8714	4.7575	-2.9313	-2.4593
5300	34.8195	4.6406	35.8714	4.7575	-2.9324	-2.4572



5300	34.819	4.6407	35.8714	4.7575	-2.9338	-2.4551
5300	34.8186	4.6408	35.8714	4.7575	-2.9349	-2.453
5300	34.8182	4.6409	35.8714	4.7575	-2.936	-2.4509
5300	34.8179	4.6411	35.8714	4.7575	-2.9369	-2.4467
5300	34.8177	4.6412	35.8714	4.7575	-2.9374	-2.4446
5300	34.8174	4.6413	35.8714	4.7575	-2.9383	-2.4425
5300	34.8171	4.6414	35.8714	4.7575	-2.9391	-2.4404
5310	34.7933	4.6502	35.8600	4.7678	-2.9746	-2.4665
5310	34.7928	4.6504	35.8600	4.7678	-2.976	-2.4624
5310	34.7922	4.6505	35.8600	4.7678	-2.9777	-2.4603
5310	34.7915	4.6507	35.8600	4.7678	-2.9796	-2.4561
5310	34.791	4.6508	35.8600	4.7678	-2.981	-2.454
5310	34.7904	4.651	35.8600	4.7678	-2.9827	-2.4498
5310	34.7897	4.6511	35.8600	4.7678	-2.9847	-2.4477
5310	34.7893	4.6512	35.8600	4.7678	-2.9858	-2.4456
5320	34.7739	4.6598	35.8486	4.7780	-2.9979	-2.4738
5320	34.7739	4.6599	35.8486	4.7780	-2.9979	-2.4717
5320	34.7737	4.6601	35.8486	4.7780	-2.9984	-2.4676
5320	34.7735	4.6602	35.8486	4.7780	-2.999	-2.4655
5320	34.7732	4.6603	35.8486	4.7780	-2.9998	-2.4634
5320	34.7728	4.6605	35.8486	4.7780	-3.001	-2.4592
5320	34.7727	4.6606	35.8486	4.7780	-3.0012	-2.4571
5350	34.716	4.6847	35.8500	4.8100	-3.1632	-2.605

## Measurement Report for Dipole(5250.000MHz)

### Exposure Conditions

Phantom Section, TSL	Frequency [MHz], Channel Number	Conversion Factor	TSL Conductivity [S/m]	TSL Permittivity
Flat, HSL	5250.000, 0	4.98	4.57	34.9

### Hardware Setup

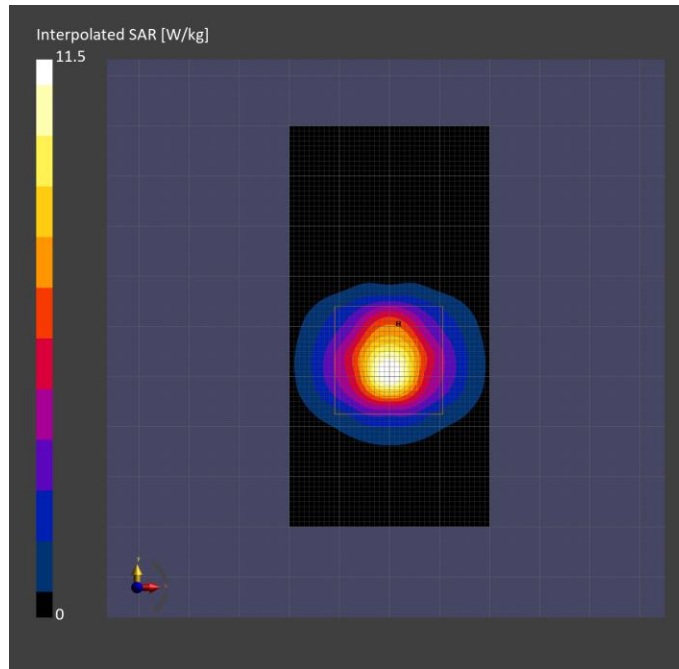
Phantom	TSL, Measured Date	Probe, Calibration Date	DAE, Calibration Date
ELI V8.0 (20deg probe tilt) - 2191	HBBL-600-10000 SLAAHU16BC221222-1, 2023- Dec-26	EX3DV4 - SN7783, 2023-01-24	DAE4 Sn1724, 2023-01-23

### Scan Setup

	Area Scan	Zoom Scan
Grid Extents [mm]	40.0 x 80.0	22.0 x 22.0 x 22.0
Grid Steps [mm]	10.0 x 10.0	4.0 x 4.0 x 1.4
Sensor Surface [mm]	3.0	1.4
Graded Grid	N/A	Yes
Grading Ratio	N/A	1.4
MAIA	N/A	N/A
Surface Detection	VMS + 6p	VMS + 6p
Scan Method	Measured	Measured

### Measurement Results

	Area Scan	Zoom Scan
Date	2023-12-26, 20:49	2023-12-26, 21:01
psSAR 1g [W/kg]	7.28	8.06
psSAR 10g [W/kg]	2.15	2.28
Power Drift [dB]	0.01	0.05
Power Scaling	Disabled	Disabled
Scaling Factor [dB]		
TSL Correction	Positive / Negative	Positive / Negative
M2/M1 [%]		61.5
Dist 3dB Peak [mm]		7.4



; Name : DAK 3.5 Head 18 deg.C 2024-Jan-02 22:08:07						
; Date : 2024-Jan-02 22:08:07						
; Temperature(C) : 18.1						
; Probe : DAK 3.5						
; Network Analyzer : Agilent Network Analyzer						
	Measured data		Target data		Deviation %	
; MHz	EpsR	Sigma(S/m)	EpsR	Sigma(S/m)	EpsR	Sigma(S/m)
5150	34.6551	4.5043	36.0429	4.6038	-3.8504	-2.1613
5180	34.6216	4.5437	36.0086	4.6345	-3.8519	-1.9592
5180	34.6215	4.5438	36.0086	4.6345	-3.8521	-1.9571
5180	34.6213	4.5438	36.0086	4.6345	-3.8527	-1.9571
5180	34.6212	4.5439	36.0086	4.6345	-3.853	-1.9549
5180	34.621	4.5441	36.0086	4.6345	-3.8535	-1.9506
5180	34.6208	4.5441	36.0086	4.6345	-3.8541	-1.9506
5180	34.6205	4.5442	36.0086	4.6345	-3.8549	-1.9484
5180	34.6202	4.5444	36.0086	4.6345	-3.8557	-1.9441
5180	34.6197	4.5445	36.0086	4.6345	-3.8571	-1.942
5190	34.6037	4.5533	35.9971	4.6448	-3.8709	-1.9699
5190	34.6034	4.5534	35.9971	4.6448	-3.8717	-1.9678
5190	34.6032	4.5535	35.9971	4.6448	-3.8723	-1.9656
5190	34.603	4.5537	35.9971	4.6448	-3.8728	-1.9613
5190	34.6028	4.5538	35.9971	4.6448	-3.8734	-1.9592
5190	34.6025	4.554	35.9971	4.6448	-3.8742	-1.9549
5190	34.6021	4.5542	35.9971	4.6448	-3.8753	-1.9506
5190	34.6017	4.5544	35.9971	4.6448	-3.8764	-1.9463
5200	34.5832	4.5646	35.9857	4.6550	-3.8974	-1.942
5200	34.583	4.5648	35.9857	4.6550	-3.8979	-1.9377
5200	34.5828	4.5649	35.9857	4.6550	-3.8985	-1.9356
5200	34.5826	4.565	35.9857	4.6550	-3.899	-1.9334
5200	34.5825	4.5651	35.9857	4.6550	-3.8993	-1.9313
5200	34.5822	4.5653	35.9857	4.6550	-3.9002	-1.927
5200	34.5821	4.5654	35.9857	4.6550	-3.9004	-1.9248
5210	34.5697	4.5748	35.9743	4.6653	-3.9045	-1.9399
5210	34.5694	4.5749	35.9743	4.6653	-3.9053	-1.9377
5210	34.5692	4.575	35.9743	4.6653	-3.9058	-1.9356
5210	34.569	4.5751	35.9743	4.6653	-3.9064	-1.9334
5210	34.5687	4.5753	35.9743	4.6653	-3.9072	-1.9291
5210	34.5685	4.5754	35.9743	4.6653	-3.9078	-1.927
5210	34.5682	4.5756	35.9743	4.6653	-3.9086	-1.9227
5210	34.5679	4.5757	35.9743	4.6653	-3.9095	-1.9206

5230	34.5313	4.5905	35.9514	4.6858	-3.9501	-2.0338
5230	34.531	4.5906	35.9514	4.6858	-3.9509	-2.0317
5230	34.5307	4.5907	35.9514	4.6858	-3.9517	-2.0295
5230	34.5304	4.5908	35.9514	4.6858	-3.9526	-2.0274
5230	34.5299	4.5909	35.9514	4.6858	-3.9539	-2.0253
5230	34.5295	4.591	35.9514	4.6858	-3.9551	-2.0231
5230	34.5291	4.5911	35.9514	4.6858	-3.9562	-2.021
5230	34.5288	4.5912	35.9514	4.6858	-3.957	-2.0189
5240	34.5001	4.6	35.9400	4.6960	-4.0064	-2.0443
5240	34.4997	4.6001	35.9400	4.6960	-4.0075	-2.0422
5240	34.4992	4.6002	35.9400	4.6960	-4.0089	-2.04
5240	34.4988	4.6004	35.9400	4.6960	-4.01	-2.0358
5240	34.4983	4.6005	35.9400	4.6960	-4.0114	-2.0336
5240	34.4978	4.6007	35.9400	4.6960	-4.0128	-2.0294
5240	34.4975	4.6008	35.9400	4.6960	-4.0136	-2.0273
5260	34.4428	4.628	35.9171	4.7165	-4.1047	-1.8764
5260	34.4424	4.6282	35.9171	4.7165	-4.1058	-1.8722
5260	34.4422	4.6285	35.9171	4.7165	-4.1064	-1.8658
5260	34.442	4.6287	35.9171	4.7165	-4.107	-1.8615
5260	34.4419	4.6289	35.9171	4.7165	-4.1072	-1.8573
5260	34.4419	4.6291	35.9171	4.7165	-4.1072	-1.8531
5260	34.4418	4.6293	35.9171	4.7165	-4.1075	-1.8488
5260	34.4418	4.6293	35.9171	4.7165	-4.1075	-1.8488
5260	34.4417	4.6294	35.9171	4.7165	-4.1078	-1.8467
5280	34.4261	4.6617	35.8943	4.7370	-4.0903	-1.5896
5280	34.4261	4.6619	35.8943	4.7370	-4.0903	-1.5854
5280	34.4262	4.6621	35.8943	4.7370	-4.0901	-1.5812
5280	34.4264	4.6623	35.8943	4.7370	-4.0895	-1.5769
5280	34.4265	4.6625	35.8943	4.7370	-4.0892	-1.5727
5280	34.4264	4.6627	35.8943	4.7370	-4.0895	-1.5685
5280	34.4264	4.6629	35.8943	4.7370	-4.0895	-1.5643
5290	34.4239	4.6712	35.8829	4.7473	-4.066	-1.603
5290	34.4238	4.6713	35.8829	4.7473	-4.0663	-1.6009
5290	34.4237	4.6714	35.8829	4.7473	-4.0666	-1.5988
5290	34.4237	4.6715	35.8829	4.7473	-4.0666	-1.5967
5290	34.4237	4.6715	35.8829	4.7473	-4.0666	-1.5967
5290	34.4235	4.6717	35.8829	4.7473	-4.0671	-1.5925
5290	34.4234	4.6718	35.8829	4.7473	-4.0674	-1.5904
5290	34.4232	4.6719	35.8829	4.7473	-4.068	-1.5883
5300	34.4113	4.6819	35.8714	4.7575	-4.0704	-1.5891
5300	34.4114	4.6821	35.8714	4.7575	-4.0701	-1.5849

5300	34.4113	4.6822	35.8714	4.7575	-4.0704	-1.5828
5300	34.4113	4.6823	35.8714	4.7575	-4.0704	-1.5807
5300	34.411	4.6825	35.8714	4.7575	-4.0712	-1.5765
5300	34.4108	4.6826	35.8714	4.7575	-4.0718	-1.5744
5300	34.4105	4.6827	35.8714	4.7575	-4.0726	-1.5723
5300	34.4102	4.6828	35.8714	4.7575	-4.0734	-1.5702
5300	34.4097	4.6829	35.8714	4.7575	-4.0748	-1.5681
5310	34.3916	4.6936	35.8600	4.7678	-4.0948	-1.5563
5310	34.3914	4.6937	35.8600	4.7678	-4.0954	-1.5542
5310	34.3914	4.6938	35.8600	4.7678	-4.0954	-1.5521
5310	34.3913	4.694	35.8600	4.7678	-4.0956	-1.5479
5310	34.3913	4.6942	35.8600	4.7678	-4.0956	-1.5437
5310	34.3913	4.6944	35.8600	4.7678	-4.0956	-1.5395
5310	34.3909	4.6947	35.8600	4.7678	-4.0968	-1.5332
5310	34.3905	4.6949	35.8600	4.7678	-4.0979	-1.529
5320	34.3773	4.7046	35.8486	4.7780	-4.1042	-1.5362
5320	34.3771	4.7046	35.8486	4.7780	-4.1048	-1.5362
5320	34.3772	4.7047	35.8486	4.7780	-4.1045	-1.5341
5320	34.3774	4.7048	35.8486	4.7780	-4.1039	-1.532
5320	34.3776	4.705	35.8486	4.7780	-4.1034	-1.5278
5320	34.3778	4.7052	35.8486	4.7780	-4.1028	-1.5237
5320	34.378	4.7054	35.8486	4.7780	-4.1023	-1.5195
5350	34.3119	4.7304	35.8500	4.8100	-4.2904	-1.6549

## Measurement Report for Dipole(5250.000MHz)

### Exposure Conditions

Phantom Section, TSL	Frequency [MHz], Channel Number	Conversion Factor	TSL Conductivity [S/m]	TSL Permittivity
Flat, HSL	5250.000, 0	4.98	4.61	34.5

### Hardware Setup

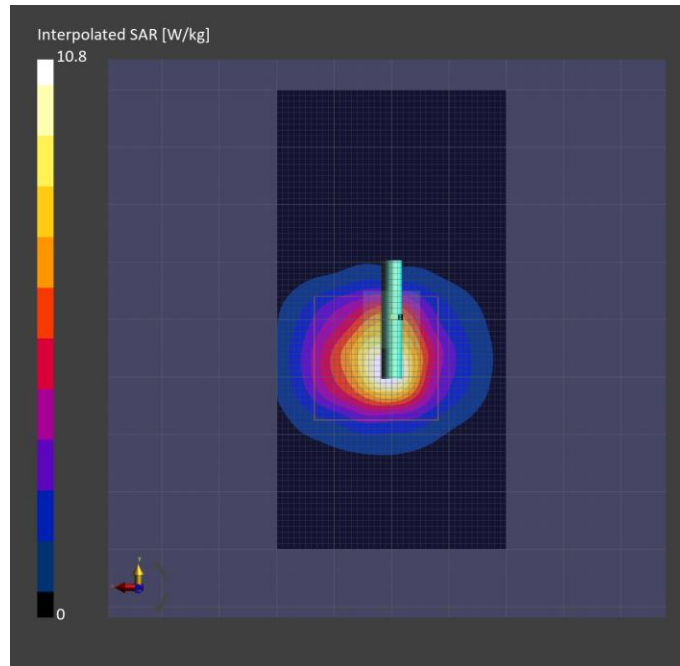
Phantom	TSL, Measured Date	Probe, Calibration Date	DAE, Calibration Date
ELI V8.0 (20deg probe tilt) - 2191	HBBL-600-10000 SLAAHU16BC221222-1, 2024-Jan-02	EX3DV4 - SN7783, 2023-01-24	DAE4 Sn1724, 2023-01-23

### Scan Setup

	Area Scan	Zoom Scan
Grid Extents [mm]	40.0 x 80.0	22.0 x 22.0 x 22.0
Grid Steps [mm]	10.0 x 10.0	4.0 x 4.0 x 1.4
Sensor Surface [mm]	3.0	1.4
Graded Grid	N/A	Yes
Grading Ratio	N/A	1.4
MAIA	N/A	N/A
Surface Detection	All points	VMS + 6p
Scan Method	Measured	Measured

### Measurement Results

	Area Scan	Zoom Scan
Date	2024-01-02, 22:26	2024-01-02, 22:37
psSAR 1g [W/kg]	7.09	8.13
psSAR 10g [W/kg]	2.17	2.31
Power Drift [dB]	-0.05	0.01
Power Scaling	Disabled	Disabled
Scaling Factor [dB]		
TSL Correction	Positive / Negative	Positive / Negative
M2/M1 [%]		61.8
Dist 3dB Peak [mm]		7.3



; Name : DAK 3.5 Head 18.7 deg.C 2024-Jan-08 17:54:15						
; Date : 2024-Jan-08 17:54:15						
; Temperature(C) : 18.7						
; Probe : DAK 3.5						
; Network Analyzer : Agilent Network Analyzer						
	Measured data		Target data		Deviation %	
; MHz	EpsR	Sigma(S/m)	EpsR	Sigma(S/m)	EpsR	Sigma(S/m)
5150	34.8079	4.44	36.0429	4.6038	-3.4265	-3.5579
5180	34.7797	4.4588	36.0086	4.6345	-3.4128	-3.7911
5180	34.7793	4.4588	36.0086	4.6345	-3.4139	-3.7911
5180	34.7787	4.4588	36.0086	4.6345	-3.4156	-3.7911
5180	34.7782	4.4589	36.0086	4.6345	-3.417	-3.789
5180	34.7777	4.459	36.0086	4.6345	-3.4184	-3.7868
5180	34.7773	4.459	36.0086	4.6345	-3.4195	-3.7868
5180	34.7769	4.459	36.0086	4.6345	-3.4206	-3.7868
5180	34.7765	4.4591	36.0086	4.6345	-3.4217	-3.7847
5180	34.776	4.4592	36.0086	4.6345	-3.4231	-3.7825
5190	34.7475	4.465	35.9971	4.6448	-3.4714	-3.871
5190	34.747	4.465	35.9971	4.6448	-3.4728	-3.871
5190	34.7465	4.4651	35.9971	4.6448	-3.4742	-3.8688
5190	34.746	4.4652	35.9971	4.6448	-3.4756	-3.8667
5190	34.7455	4.4653	35.9971	4.6448	-3.4769	-3.8645
5190	34.745	4.4655	35.9971	4.6448	-3.4783	-3.8602
5190	34.7446	4.4656	35.9971	4.6448	-3.4794	-3.8581
5190	34.7442	4.4657	35.9971	4.6448	-3.4806	-3.8559
5200	34.7136	4.4751	35.9857	4.6550	-3.535	-3.8647
5200	34.7133	4.4752	35.9857	4.6550	-3.5358	-3.8625
5200	34.7129	4.4753	35.9857	4.6550	-3.537	-3.8604
5200	34.7126	4.4755	35.9857	4.6550	-3.5378	-3.8561
5200	34.7123	4.4757	35.9857	4.6550	-3.5386	-3.8518
5200	34.712	4.4758	35.9857	4.6550	-3.5395	-3.8496
5200	34.7118	4.476	35.9857	4.6550	-3.54	-3.8453
5210	34.6862	4.4879	35.9743	4.6653	-3.5806	-3.8025
5210	34.6858	4.4881	35.9743	4.6653	-3.5817	-3.7983
5210	34.6854	4.4883	35.9743	4.6653	-3.5828	-3.794
5210	34.685	4.4884	35.9743	4.6653	-3.5839	-3.7918
5210	34.6846	4.4886	35.9743	4.6653	-3.5851	-3.7875
5210	34.6843	4.4888	35.9743	4.6653	-3.5859	-3.7833
5210	34.6841	4.4889	35.9743	4.6653	-3.5864	-3.7811
5210	34.6839	4.4891	35.9743	4.6653	-3.587	-3.7768

5230	34.6506	4.5134	35.9514	4.6858	-3.6182	-3.6792
5230	34.6505	4.5135	35.9514	4.6858	-3.6185	-3.6771
5230	34.6503	4.5137	35.9514	4.6858	-3.6191	-3.6728
5230	34.6502	4.5138	35.9514	4.6858	-3.6193	-3.6707
5230	34.6501	4.514	35.9514	4.6858	-3.6196	-3.6664
5230	34.65	4.5141	35.9514	4.6858	-3.6199	-3.6643
5230	34.6499	4.5142	35.9514	4.6858	-3.6202	-3.6621
5230	34.6498	4.5144	35.9514	4.6858	-3.6204	-3.6579
5240	34.6351	4.5255	35.9400	4.6960	-3.6308	-3.6307
5240	34.635	4.5257	35.9400	4.6960	-3.6311	-3.6265
5240	34.6349	4.5259	35.9400	4.6960	-3.6313	-3.6222
5240	34.6347	4.5261	35.9400	4.6960	-3.6319	-3.618
5240	34.6346	4.5263	35.9400	4.6960	-3.6322	-3.6137
5240	34.6344	4.5264	35.9400	4.6960	-3.6327	-3.6116
5240	34.6343	4.5266	35.9400	4.6960	-3.633	-3.6073
5260	34.6163	4.5518	35.9171	4.7165	-3.6217	-3.492
5260	34.6161	4.552	35.9171	4.7165	-3.6222	-3.4878
5260	34.6161	4.5522	35.9171	4.7165	-3.6222	-3.4835
5260	34.616	4.5523	35.9171	4.7165	-3.6225	-3.4814
5260	34.6159	4.5525	35.9171	4.7165	-3.6228	-3.4772
5260	34.6159	4.5527	35.9171	4.7165	-3.6228	-3.4729
5260	34.6157	4.5528	35.9171	4.7165	-3.6233	-3.4708
5260	34.6156	4.553	35.9171	4.7165	-3.6236	-3.4666
5260	34.6155	4.5531	35.9171	4.7165	-3.6239	-3.4644
5280	34.6154	4.569	35.8943	4.7370	-3.563	-3.5465
5280	34.6153	4.5691	35.8943	4.7370	-3.5632	-3.5444
5280	34.6152	4.5691	35.8943	4.7370	-3.5635	-3.5444
5280	34.6151	4.5692	35.8943	4.7370	-3.5638	-3.5423
5280	34.615	4.5693	35.8943	4.7370	-3.5641	-3.5402
5280	34.6149	4.5694	35.8943	4.7370	-3.5644	-3.5381
5280	34.6149	4.5694	35.8943	4.7370	-3.5644	-3.5381
5290	34.6053	4.5713	35.8829	4.7473	-3.5605	-3.7074
5290	34.605	4.5713	35.8829	4.7473	-3.5613	-3.7074
5290	34.6047	4.5712	35.8829	4.7473	-3.5621	-3.7095
5290	34.6043	4.5712	35.8829	4.7473	-3.5633	-3.7095
5290	34.604	4.5712	35.8829	4.7473	-3.5641	-3.7095
5290	34.6038	4.5712	35.8829	4.7473	-3.5647	-3.7095
5290	34.6035	4.5713	35.8829	4.7473	-3.5655	-3.7074
5290	34.6034	4.5713	35.8829	4.7473	-3.5658	-3.7074
5300	34.5784	4.5755	35.8714	4.7575	-3.6045	-3.8255
5300	34.5778	4.5757	35.8714	4.7575	-3.6062	-3.8213



5300	34.5773	4.5757	35.8714	4.7575	-3.6076	-3.8213
5300	34.5768	4.5758	35.8714	4.7575	-3.609	-3.8192
5300	34.5764	4.5759	35.8714	4.7575	-3.6101	-3.8171
5300	34.576	4.576	35.8714	4.7575	-3.6112	-3.815
5300	34.5757	4.576	35.8714	4.7575	-3.6121	-3.815
5300	34.5753	4.5761	35.8714	4.7575	-3.6132	-3.8129
5300	34.5751	4.5762	35.8714	4.7575	-3.6137	-3.8108
5310	34.544	4.5845	35.8600	4.7678	-3.6698	-3.8445
5310	34.5436	4.5847	35.8600	4.7678	-3.6709	-3.8403
5310	34.5433	4.5849	35.8600	4.7678	-3.6718	-3.8362
5310	34.5429	4.5851	35.8600	4.7678	-3.6729	-3.832
5310	34.5424	4.5852	35.8600	4.7678	-3.6743	-3.8299
5310	34.5419	4.5854	35.8600	4.7678	-3.6757	-3.8257
5310	34.5414	4.5856	35.8600	4.7678	-3.6771	-3.8215
5310	34.541	4.5857	35.8600	4.7678	-3.6782	-3.8194
5320	34.5153	4.597	35.8486	4.7780	-3.7193	-3.7882
5320	34.5151	4.5972	35.8486	4.7780	-3.7198	-3.784
5320	34.5149	4.5974	35.8486	4.7780	-3.7204	-3.7798
5320	34.5146	4.5975	35.8486	4.7780	-3.7212	-3.7777
5320	34.5142	4.5977	35.8486	4.7780	-3.7223	-3.7735
5320	34.5139	4.5979	35.8486	4.7780	-3.7232	-3.7694
5320	34.5136	4.5981	35.8486	4.7780	-3.724	-3.7652
5350	34.4587	4.6303	35.8500	4.8100	-3.8809	-3.736

## Measurement Report for Dipole(5250.000MHz)

### Exposure Conditions

Phantom Section, TSL	Frequency [MHz], Channel Number	Conversion Factor	TSL Conductivity [S/m]	TSL Permittivity
Flat, HSL	5250.000, 0	4.98	4.54	34.6

### Hardware Setup

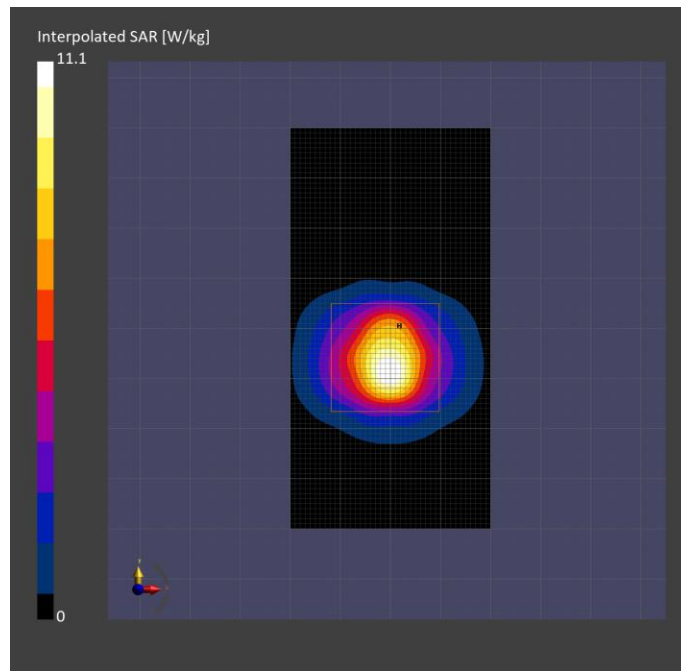
Phantom	TSL, Measured Date	Probe, Calibration Date	DAE, Calibration Date
ELI V8.0 (20deg probe tilt) - 2191	HBBL-600-10000 SLAAHU16BC221222-1, 2024-Jan-08	EX3DV4 - SN7783, 2023-01-24	DAE4 Sn1724, 2023-01-23

### Scan Setup

	Area Scan	Zoom Scan
Grid Extents [mm]	40.0 x 80.0	22.0 x 22.0 x 22.0
Grid Steps [mm]	10.0 x 10.0	4.0 x 4.0 x 1.4
Sensor Surface [mm]	3.0	1.4
Graded Grid	N/A	Yes
Grading Ratio	N/A	1.4
MAIA	N/A	N/A
Surface Detection	VMS + 6p	VMS + 6p
Scan Method	Measured	Measured

### Measurement Results

	Area Scan	Zoom Scan
Date	2024-01-08, 18:47	2024-01-08, 18:58
psSAR 1g [W/kg]	7.19	8.03
psSAR 10g [W/kg]	2.15	2.27
Power Drift [dB]	-0.00	0.04
Power Scaling	Disabled	Disabled
Scaling Factor [dB]		
TSL Correction	Positive / Negative	Positive / Negative
M2/M1 [%]		61.1
Dist 3dB Peak [mm]		7.2



; Name : DAK 3.5 Head 20 deg.C 2024-Jan-15 11:22:09						
; Date : 2024-Jan-15 11:22:09						
; Temperature(C) : 20						
; Probe : DAK 3.5						
; Network Analyzer : Agilent Network Analyzer						
	Measured data		Target data		Deviation %	
; MHz	EpsR	Sigma(S/m)	EpsR	Sigma(S/m)	EpsR	Sigma(S/m)
5150	35.0288	4.4432	36.0429	4.6038	-2.8136	-3.4884
5150	35.0289	4.4436	36.0086	4.6345	-2.7207	-4.1191
5180	35.0883	4.4976	36.0086	4.6345	-2.5558	-2.9539
5180	35.0885	4.4977	36.0086	4.6345	-2.5552	-2.9518
5180	35.0886	4.4977	36.0086	4.6345	-2.5549	-2.9518
5180	35.0886	4.4978	36.0086	4.6345	-2.5549	-2.9496
5180	35.0887	4.4978	36.0086	4.6345	-2.5547	-2.9496
5180	35.0889	4.4978	36.0086	4.6345	-2.5541	-2.9496
5180	35.0892	4.4979	36.0086	4.6345	-2.5533	-2.9475
5180	35.0894	4.4979	36.0086	4.6345	-2.5527	-2.9475
5181	35.0897	4.4979	35.9971	4.6448	-2.5208	-3.1627
5190	35.1052	4.495	35.9971	4.6448	-2.4777	-3.2251
5190	35.1053	4.495	35.9971	4.6448	-2.4774	-3.2251
5190	35.1053	4.4949	35.9971	4.6448	-2.4774	-3.2273
5190	35.1052	4.4949	35.9971	4.6448	-2.4777	-3.2273
5190	35.1051	4.4949	35.9971	4.6448	-2.478	-3.2273
5190	35.105	4.4949	35.9971	4.6448	-2.4783	-3.2273
5190	35.1048	4.4948	35.9971	4.6448	-2.4788	-3.2294
5191	35.1047	4.4948	35.9857	4.6550	-2.4482	-3.4415
5200	35.0975	4.4877	35.9857	4.6550	-2.4682	-3.594
5200	35.0972	4.4875	35.9857	4.6550	-2.469	-3.5983
5200	35.097	4.4874	35.9857	4.6550	-2.4696	-3.6004
5200	35.0969	4.4873	35.9857	4.6550	-2.4699	-3.6026
5200	35.0968	4.4872	35.9857	4.6550	-2.4701	-3.6047
5200	35.0967	4.4871	35.9857	4.6550	-2.4704	-3.6069
5201	35.0965	4.487	35.9743	4.6653	-2.4401	-3.8218
5210	35.0708	4.4788	35.9743	4.6653	-2.5115	-3.9976
5210	35.0702	4.4787	35.9743	4.6653	-2.5132	-3.9997
5210	35.0694	4.4787	35.9743	4.6653	-2.5154	-3.9997
5210	35.0689	4.4785	35.9743	4.6653	-2.5168	-4.004
5210	35.0683	4.4784	35.9743	4.6653	-2.5185	-4.0062
5210	35.0676	4.4783	35.9743	4.6653	-2.5204	-4.0083
5210	35.067	4.4781	35.9743	4.6653	-2.5221	-4.0126

5211	35.0664	4.478	35.9514	4.6858	-2.4617	-4.4347
5230	34.9607	4.4729	35.9514	4.6858	-2.7557	-4.5435
5230	34.9598	4.4729	35.9514	4.6858	-2.7582	-4.5435
5230	34.9588	4.4729	35.9514	4.6858	-2.7609	-4.5435
5230	34.9578	4.473	35.9514	4.6858	-2.7637	-4.5414
5230	34.9568	4.473	35.9514	4.6858	-2.7665	-4.5414
5230	34.9559	4.4731	35.9514	4.6858	-2.769	-4.5392
5230	34.955	4.4731	35.9514	4.6858	-2.7715	-4.5392
5231	34.9542	4.4732	35.9400	4.6960	-2.7429	-4.7445
5240	34.8928	4.4844	35.9400	4.6960	-2.9137	-4.506
5240	34.8919	4.4847	35.9400	4.6960	-2.9162	-4.4996
5240	34.891	4.4849	35.9400	4.6960	-2.9188	-4.4953
5240	34.8902	4.4851	35.9400	4.6960	-2.921	-4.4911
5240	34.8893	4.4853	35.9400	4.6960	-2.9235	-4.4868
5240	34.8884	4.4856	35.9400	4.6960	-2.926	-4.4804
5241	34.8876	4.4858	35.9171	4.7165	-2.8663	-4.8913
5260	34.8105	4.5409	35.9171	4.7165	-3.081	-3.7231
5260	34.8101	4.5414	35.9171	4.7165	-3.0821	-3.7125
5260	34.8098	4.5419	35.9171	4.7165	-3.0829	-3.7019
5260	34.8097	4.5424	35.9171	4.7165	-3.0832	-3.6913
5260	34.8096	4.5429	35.9171	4.7165	-3.0835	-3.6807
5260	34.8095	4.5435	35.9171	4.7165	-3.0838	-3.668
5260	34.8093	4.5441	35.9171	4.7165	-3.0843	-3.6553
5260	34.8092	4.5447	35.9171	4.7165	-3.0846	-3.6425
5261	34.8091	4.5452	35.8943	4.7370	-3.0233	-4.049
5280	34.8475	4.6003	35.8943	4.7370	-2.9163	-2.8858
5280	34.8479	4.6004	35.8943	4.7370	-2.9152	-2.8837
5280	34.8482	4.6006	35.8943	4.7370	-2.9144	-2.8795
5280	34.8487	4.6008	35.8943	4.7370	-2.913	-2.8752
5280	34.8493	4.601	35.8943	4.7370	-2.9113	-2.871
5280	34.8497	4.6012	35.8943	4.7370	-2.9102	-2.8668
5281	34.8505	4.6013	35.8829	4.7473	-2.8771	-3.0754
5290	34.8839	4.61	35.8829	4.7473	-2.7841	-2.8922
5290	34.8843	4.61	35.8829	4.7473	-2.7829	-2.8922
5290	34.8847	4.6101	35.8829	4.7473	-2.7818	-2.8901
5290	34.8851	4.6101	35.8829	4.7473	-2.7807	-2.8901
5290	34.8856	4.6101	35.8829	4.7473	-2.7793	-2.8901
5290	34.8861	4.6102	35.8829	4.7473	-2.7779	-2.888
5290	34.8866	4.6102	35.8829	4.7473	-2.7765	-2.888
5291	34.8869	4.6103	35.8714	4.7575	-2.7445	-3.0941
5300	34.9016	4.6089	35.8714	4.7575	-2.7035	-3.1235

5300	34.9007	4.6086	35.8714	4.7575	-2.7061	-3.1298
5300	34.8996	4.6082	35.8714	4.7575	-2.7091	-3.1382
5300	34.8987	4.6079	35.8714	4.7575	-2.7116	-3.1445
5300	34.8979	4.6075	35.8714	4.7575	-2.7139	-3.1529
5300	34.8971	4.6073	35.8714	4.7575	-2.7161	-3.1571
5300	34.8964	4.6071	35.8714	4.7575	-2.718	-3.1613
5300	34.8958	4.6069	35.8714	4.7575	-2.7197	-3.1655
5301	34.8954	4.6069	35.8600	4.7678	-2.6899	-3.3747
5310	34.8992	4.6023	35.8600	4.7678	-2.6793	-3.4712
5310	34.8982	4.6021	35.8600	4.7678	-2.6821	-3.4754
5310	34.8972	4.6018	35.8600	4.7678	-2.6849	-3.4817
5310	34.8964	4.6016	35.8600	4.7678	-2.6871	-3.4859
5310	34.8956	4.6014	35.8600	4.7678	-2.6893	-3.4901
5310	34.8949	4.6012	35.8600	4.7678	-2.6913	-3.4943
5310	34.8943	4.601	35.8600	4.7678	-2.693	-3.4985
5311	34.8939	4.6009	35.8486	4.7780	-2.6631	-3.7066
5320	34.8743	4.5935	35.8486	4.7780	-2.7178	-3.8614
5320	34.8754	4.5937	35.8486	4.7780	-2.7148	-3.8573
5320	34.8763	4.5938	35.8486	4.7780	-2.7122	-3.8552
5320	34.877	4.5938	35.8486	4.7780	-2.7103	-3.8552
5320	34.8775	4.5938	35.8486	4.7780	-2.7089	-3.8552
5320	34.8778	4.5938	35.8486	4.7780	-2.7081	-3.8552
5321	34.8778	4.5937	35.8790	4.7810	-2.7905	-3.9176

## Measurement Report for Dipole(5250.000MHz)

### Exposure Conditions

Phantom Section, TSL	Frequency [MHz], Channel Number	Conversion Factor	TSL Conductivity [S/m]	TSL Permittivity
Flat, HSL	5250.000, 0	4.98	4.51	34.8

### Hardware Setup

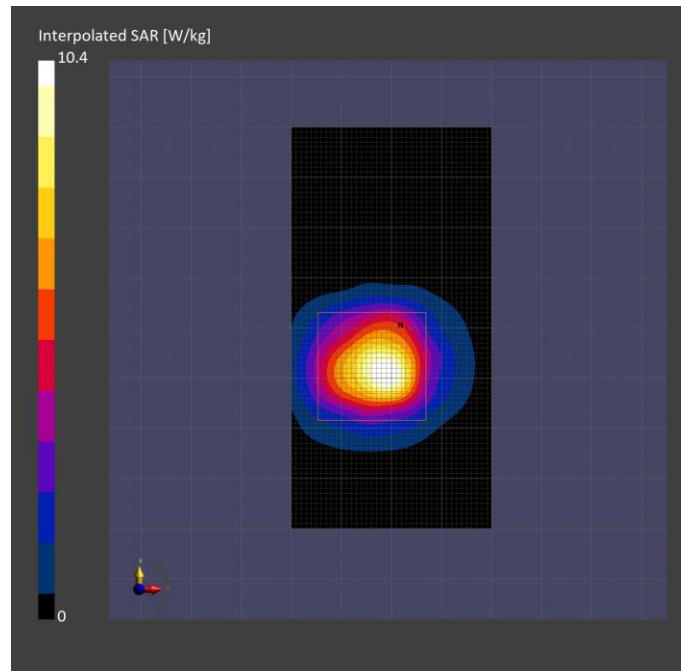
Phantom	TSL, Measured Date	Probe, Calibration Date	DAE, Calibration Date
ELI V8.0 (20deg probe tilt) - 2191	HBBL-600-10000 SLAAHU16BC221222-1, 2024-Jan-15	EX3DV4 - SN7783, 2023-01-24	DAE4 Sn1724, 2023-01-23

### Scan Setup

	Area Scan	Zoom Scan
Grid Extents [mm]	40.0 x 80.0	22.0 x 22.0 x 22.0
Grid Steps [mm]	10.0 x 10.0	4.0 x 4.0 x 1.4
Sensor Surface [mm]	3.0	1.4
Graded Grid	N/A	Yes
Grading Ratio	N/A	1.4
MAIA	N/A	N/A
Surface Detection	All points	All points
Scan Method	Measured	Measured

### Measurement Results

	Area Scan	Zoom Scan
Date	2024-01-15, 12:00	2024-01-15, 12:13
psSAR 1g [W/kg]	6.75	7.79
psSAR 10g [W/kg]	2.09	2.22
Power Drift [dB]	-0.03	0.03
Power Scaling	Disabled	Disabled
Scaling Factor [dB]		
TSL Correction	Positive / Negative	Positive / Negative
M2/M1 [%]		62.0
Dist 3dB Peak [mm]		7.4



; Name : DAK 3.5 Head 23.45 deg.C 2024-Jan-18 19:29:45						
; Date : 2024-Jan-18 19:29:45						
; Temperature(C) : 23.45						
; Probe : DAK 3.5						
; Network Analyzer : Agilent Network Analyzer						
	Measured data		Target data		Deviation %	
; MHz	EpsR	Sigma(S/m)	EpsR	Sigma(S/m)	EpsR	Sigma(S/m)
5150	34.643	4.3952	36.0429	4.6038	-3.884	-4.531
5150	34.6433	4.3953	36.0429	4.6038	-3.8832	-4.5289
5180	34.6119	4.4242	36.0086	4.6345	-3.8788	-4.5377
5180	34.6115	4.4243	36.0086	4.6345	-3.8799	-4.5355
5180	34.6112	4.4244	36.0086	4.6345	-3.8807	-4.5334
5180	34.611	4.4245	36.0086	4.6345	-3.8813	-4.5312
5180	34.6106	4.4246	36.0086	4.6345	-3.8824	-4.5291
5180	34.6102	4.4247	36.0086	4.6345	-3.8835	-4.5269
5180	34.6098	4.4248	36.0086	4.6345	-3.8846	-4.5248
5180	34.6094	4.4248	36.0086	4.6345	-3.8857	-4.5248
5181	34.609	4.4249	35.9971	4.6448	-3.8561	-4.7343
5190	34.5896	4.433	35.9971	4.6448	-3.91	-4.5599
5190	34.5894	4.4331	35.9971	4.6448	-3.9106	-4.5578
5190	34.5891	4.4332	35.9971	4.6448	-3.9114	-4.5556
5190	34.5889	4.4334	35.9971	4.6448	-3.912	-4.5513
5190	34.5885	4.4336	35.9971	4.6448	-3.9131	-4.547
5190	34.5881	4.4338	35.9971	4.6448	-3.9142	-4.5427
5190	34.5879	4.434	35.9971	4.6448	-3.9148	-4.5384
5191	34.5875	4.4342	35.9857	4.6550	-3.8854	-4.7433
5200	34.5692	4.445	35.9857	4.6550	-3.9363	-4.5113
5200	34.5691	4.4451	35.9857	4.6550	-3.9366	-4.5091
5200	34.569	4.4452	35.9857	4.6550	-3.9368	-4.507
5200	34.5689	4.4453	35.9857	4.6550	-3.9371	-4.5048
5200	34.5687	4.4455	35.9857	4.6550	-3.9377	-4.5005
5200	34.5685	4.4456	35.9857	4.6550	-3.9382	-4.4984
5201	34.5682	4.4458	35.9743	4.6653	-3.9086	-4.7049
5210	34.5555	4.4565	35.9743	4.6653	-3.9439	-4.4756
5210	34.5554	4.4566	35.9743	4.6653	-3.9442	-4.4735
5210	34.5552	4.4568	35.9743	4.6653	-3.9448	-4.4692
5210	34.555	4.4569	35.9743	4.6653	-3.9453	-4.467
5210	34.5549	4.457	35.9743	4.6653	-3.9456	-4.4649
5210	34.5548	4.4572	35.9743	4.6653	-3.9459	-4.4606
5210	34.5547	4.4574	35.9743	4.6653	-3.9462	-4.4563

5211	34.5547	4.4575	35.9514	4.6858	-3.885	-4.8722
5230	34.5303	4.4744	35.9514	4.6858	-3.9528	-4.5115
5230	34.5301	4.4745	35.9514	4.6858	-3.9534	-4.5094
5230	34.5299	4.4746	35.9514	4.6858	-3.9539	-4.5072
5230	34.5297	4.4748	35.9514	4.6858	-3.9545	-4.503
5230	34.5294	4.4749	35.9514	4.6858	-3.9553	-4.5008
5230	34.5291	4.475	35.9514	4.6858	-3.9562	-4.4987
5230	34.5288	4.4752	35.9514	4.6858	-3.957	-4.4944
5231	34.5285	4.4753	35.9400	4.6960	-3.9274	-4.6997
5240	34.5097	4.483	35.9400	4.6960	-3.9797	-4.5358
5240	34.5093	4.4832	35.9400	4.6960	-3.9808	-4.5315
5240	34.5089	4.4833	35.9400	4.6960	-3.9819	-4.5294
5240	34.5084	4.4834	35.9400	4.6960	-3.9833	-4.5273
5240	34.5081	4.4835	35.9400	4.6960	-3.9841	-4.5251
5240	34.5077	4.4837	35.9400	4.6960	-3.9853	-4.5209
5241	34.5073	4.4838	35.9171	4.7165	-3.9251	-4.9337
5260	34.4646	4.5076	35.9171	4.7165	-4.044	-4.4291
5260	34.4644	4.5077	35.9171	4.7165	-4.0446	-4.427
5260	34.4642	4.5079	35.9171	4.7165	-4.0451	-4.4228
5260	34.464	4.5081	35.9171	4.7165	-4.0457	-4.4185
5260	34.4636	4.5083	35.9171	4.7165	-4.0468	-4.4143
5260	34.4633	4.5085	35.9171	4.7165	-4.0477	-4.41
5260	34.4631	4.5086	35.9171	4.7165	-4.0482	-4.4079
5260	34.4628	4.5087	35.9171	4.7165	-4.049	-4.4058
5261	34.4626	4.5089	35.8943	4.7370	-3.9887	-4.8153
5280	34.4508	4.5312	35.8943	4.7370	-4.0215	-4.3445
5280	34.4507	4.5313	35.8943	4.7370	-4.0218	-4.3424
5280	34.4506	4.5314	35.8943	4.7370	-4.0221	-4.3403
5280	34.4505	4.5314	35.8943	4.7370	-4.0224	-4.3403
5280	34.4503	4.5315	35.8943	4.7370	-4.0229	-4.3382
5280	34.4501	4.5316	35.8943	4.7370	-4.0235	-4.3361
5281	34.45	4.5317	35.8829	4.7473	-3.9933	-4.5415
5290	34.4414	4.5374	35.8829	4.7473	-4.0172	-4.4215
5290	34.4413	4.5375	35.8829	4.7473	-4.0175	-4.4194
5290	34.4411	4.5376	35.8829	4.7473	-4.0181	-4.4172
5290	34.4409	4.5377	35.8829	4.7473	-4.0186	-4.4151
5290	34.4406	4.5378	35.8829	4.7473	-4.0195	-4.413
5290	34.4404	4.5379	35.8829	4.7473	-4.02	-4.4109
5290	34.4401	4.538	35.8829	4.7473	-4.0209	-4.4088
5291	34.4398	4.5382	35.8714	4.7575	-3.9909	-4.6096
5300	34.4177	4.5456	35.8714	4.7575	-4.0525	-4.454



5300	34.4174	4.5457	35.8714	4.7575	-4.0534	-4.4519
5300	34.4172	4.5458	35.8714	4.7575	-4.0539	-4.4498
5300	34.4169	4.5459	35.8714	4.7575	-4.0548	-4.4477
5300	34.4168	4.546	35.8714	4.7575	-4.055	-4.4456
5300	34.4166	4.546	35.8714	4.7575	-4.0556	-4.4456
5300	34.4165	4.5461	35.8714	4.7575	-4.0559	-4.4435
5300	34.4163	4.5462	35.8714	4.7575	-4.0564	-4.4414
5301	34.416	4.5463	35.8600	4.7678	-4.0268	-4.6457
5310	34.3961	4.5572	35.8600	4.7678	-4.0823	-4.4171
5310	34.3959	4.5574	35.8600	4.7678	-4.0828	-4.4129
5310	34.3957	4.5576	35.8600	4.7678	-4.0834	-4.4087
5310	34.3956	4.5577	35.8600	4.7678	-4.0837	-4.4066
5310	34.3953	4.5578	35.8600	4.7678	-4.0845	-4.4045
5310	34.395	4.558	35.8600	4.7678	-4.0853	-4.4004
5310	34.3948	4.5581	35.8600	4.7678	-4.0859	-4.3983
5311	34.3947	4.5582	35.8486	4.7780	-4.0557	-4.6003
5320	34.381	4.5687	35.8486	4.7780	-4.0939	-4.3805
5320	34.3808	4.5689	35.8486	4.7780	-4.0944	-4.3763
5320	34.3806	4.569	35.8486	4.7780	-4.095	-4.3742
5320	34.3803	4.5691	35.8486	4.7780	-4.0958	-4.3721
5320	34.38	4.5693	35.8486	4.7780	-4.0967	-4.3679
5320	34.3799	4.5694	35.8486	4.7780	-4.097	-4.3658
5321	34.3798	4.5694	35.8790	4.7810	-4.1785	-4.4259

## Measurement Report for Dipole(5250.000MHz)

### Exposure Conditions

Phantom Section, TSL	Frequency [MHz], Channel Number	Conversion Factor	TSL Conductivity [S/m]	TSL Permittivity
Flat, HSL	5250.000, 0	4.98	4.51	34.5

### Hardware Setup

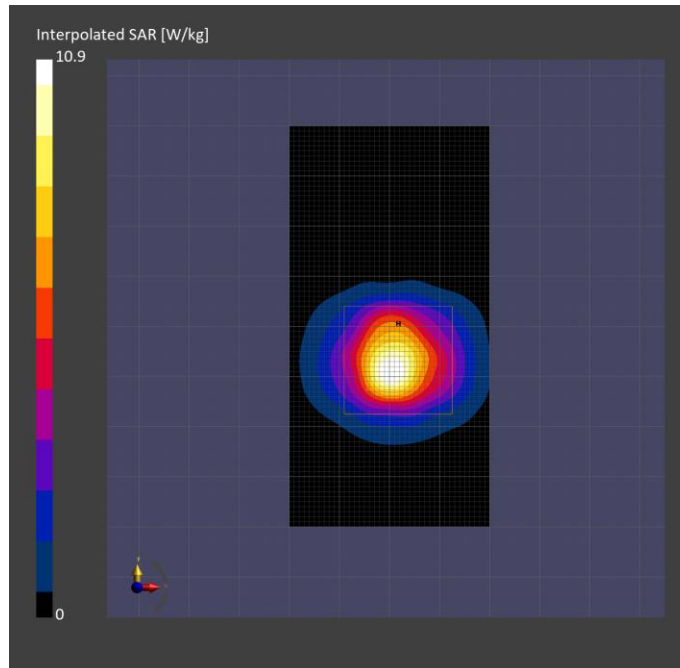
Phantom	TSL, Measured Date	Probe, Calibration Date	DAE, Calibration Date
ELI V8.0 (20deg probe tilt) - 2191	HBBL-600-10000 SLAAHU16BC221222-1, 2024-Jan-18	EX3DV4 - SN7783, 2023-01-24	DAE4 Sn1724, 2023-01-23

### Scan Setup

	Area Scan	Zoom Scan
Grid Extents [mm]	40.0 x 80.0	22.0 x 22.0 x 22.0
Grid Steps [mm]	10.0 x 10.0	4.0 x 4.0 x 1.4
Sensor Surface [mm]	3.0	1.4
Graded Grid	N/A	Yes
Grading Ratio	N/A	1.4
MAIA	N/A	N/A
Surface Detection	VMS + 6p	VMS + 6p
Scan Method	Measured	Measured

### Measurement Results

	Area Scan	Zoom Scan
Date	2024-01-18, 21:23	2024-01-18, 21:32
psSAR1g [W/kg]	6.98	7.90
psSAR10g [W/kg]	2.09	2.24
Power Drift [dB]	-0.00	0.01
Power Scaling	Disabled	Disabled
Scaling Factor [dB]		
TSL Correction	Positive / Negative	Positive / Negative
M2/M1 [%]		62.4
Dist 3dB Peak [mm]		7.4



; Name : DAK 3.5 Head 22.35 deg.C 2024-Jan-28 22:38:09						
; Date : 2024-Jan-28 22:38:09						
; Temperature(C) : 22.35						
; Probe : DAK 3.5						
; Network Analyzer : Agilent Network Analyzer						
	Measured data		Target data		Deviation %	
; MHz	EpsR	Sigma(S/m)	EpsR	Sigma(S/m)	EpsR	Sigma(S/m)
5150	36.1818	4.4251	36.0429	4.6038	0.3854	-3.8816
5180	36.1435	4.4645	36.0086	4.6345	0.3746	-3.6681
5180	36.1433	4.4647	36.0086	4.6345	0.3741	-3.6638
5180	36.1432	4.4649	36.0086	4.6345	0.3738	-3.6595
5180	36.143	4.465	36.0086	4.6345	0.3732	-3.6574
5180	36.1428	4.4652	36.0086	4.6345	0.3727	-3.653
5180	36.1425	4.4654	36.0086	4.6345	0.3719	-3.6487
5180	36.142	4.4656	36.0086	4.6345	0.3705	-3.6444
5180	36.1417	4.4657	36.0086	4.6345	0.3696	-3.6422
5180	36.1416	4.4659	36.0086	4.6345	0.3694	-3.6379
5190	36.129	4.4776	35.9971	4.6448	0.3664	-3.5997
5190	36.1289	4.4778	35.9971	4.6448	0.3661	-3.5954
5190	36.1287	4.478	35.9971	4.6448	0.3656	-3.5911
5190	36.1285	4.4782	35.9971	4.6448	0.365	-3.5868
5190	36.1283	4.4783	35.9971	4.6448	0.3645	-3.5847
5190	36.1281	4.4784	35.9971	4.6448	0.3639	-3.5825
5190	36.128	4.4786	35.9971	4.6448	0.3636	-3.5782
5190	36.1279	4.4787	35.9971	4.6448	0.3634	-3.576
5200	36.1178	4.4913	35.9857	4.6550	0.3671	-3.5166
5200	36.1178	4.4915	35.9857	4.6550	0.3671	-3.5124
5200	36.1177	4.4916	35.9857	4.6550	0.3668	-3.5102
5200	36.1175	4.4918	35.9857	4.6550	0.3663	-3.5059
5200	36.1173	4.4919	35.9857	4.6550	0.3657	-3.5038
5200	36.1171	4.4921	35.9857	4.6550	0.3651	-3.4995
5200	36.1169	4.4923	35.9857	4.6550	0.3646	-3.4952
5210	36.11	4.5024	35.9743	4.6653	0.3772	-3.4917
5210	36.1099	4.5025	35.9743	4.6653	0.3769	-3.4896
5210	36.1099	4.5025	35.9743	4.6653	0.3769	-3.4896
5210	36.1098	4.5027	35.9743	4.6653	0.3767	-3.4853
5210	36.1098	4.5027	35.9743	4.6653	0.3767	-3.4853
5210	36.1098	4.5029	35.9743	4.6653	0.3767	-3.481
5210	36.1098	4.503	35.9743	4.6653	0.3767	-3.4789
5210	36.1098	4.5032	35.9743	4.6653	0.3767	-3.4746

5230	36.0854	4.5167	35.9514	4.6858	0.3727	-3.6088
5230	36.0851	4.5167	35.9514	4.6858	0.3719	-3.6088
5230	36.0848	4.5168	35.9514	4.6858	0.3711	-3.6066
5230	36.0845	4.5168	35.9514	4.6858	0.3702	-3.6066
5230	36.084	4.5169	35.9514	4.6858	0.3688	-3.6045
5230	36.0836	4.517	35.9514	4.6858	0.3677	-3.6024
5230	36.0831	4.517	35.9514	4.6858	0.3663	-3.6024
5230	36.0827	4.5171	35.9514	4.6858	0.3652	-3.6002
5240	36.056	4.5234	35.9400	4.6960	0.3228	-3.6755
5240	36.0556	4.5235	35.9400	4.6960	0.3216	-3.6733
5240	36.0551	4.5236	35.9400	4.6960	0.3203	-3.6712
5240	36.0547	4.5237	35.9400	4.6960	0.3191	-3.6691
5240	36.0542	4.5238	35.9400	4.6960	0.3178	-3.667
5240	36.0537	4.5239	35.9400	4.6960	0.3164	-3.6648
5240	36.0532	4.5241	35.9400	4.6960	0.315	-3.6606
5260	35.991	4.548	35.9171	4.7165	0.2058	-3.5726
5260	35.9907	4.5481	35.9171	4.7165	0.2049	-3.5704
5260	35.9905	4.5483	35.9171	4.7165	0.2044	-3.5662
5260	35.9902	4.5485	35.9171	4.7165	0.2035	-3.562
5260	35.9899	4.5486	35.9171	4.7165	0.2027	-3.5598
5260	35.9895	4.5488	35.9171	4.7165	0.2016	-3.5556
5260	35.989	4.5489	35.9171	4.7165	0.2002	-3.5535
5260	35.9885	4.5491	35.9171	4.7165	0.1988	-3.5492
5260	35.988	4.5493	35.9171	4.7165	0.1974	-3.545
5280	35.9626	4.5767	35.8943	4.7370	0.1903	-3.384
5280	35.9624	4.5768	35.8943	4.7370	0.1897	-3.3819
5280	35.9621	4.577	35.8943	4.7370	0.1889	-3.3777
5280	35.9619	4.5771	35.8943	4.7370	0.1883	-3.3756
5280	35.9619	4.5773	35.8943	4.7370	0.1883	-3.3713
5280	35.9616	4.5774	35.8943	4.7370	0.1875	-3.3692
5280	35.9615	4.5776	35.8943	4.7370	0.1872	-3.365
5290	35.9511	4.5874	35.8829	4.7473	0.1901	-3.3682
5290	35.9511	4.5875	35.8829	4.7473	0.1901	-3.3661
5290	35.9508	4.5876	35.8829	4.7473	0.1892	-3.364
5290	35.9505	4.5877	35.8829	4.7473	0.1884	-3.3619
5290	35.9503	4.5878	35.8829	4.7473	0.1878	-3.3598
5290	35.9501	4.588	35.8829	4.7473	0.1873	-3.3556
5290	35.95	4.5881	35.8829	4.7473	0.187	-3.3535
5290	35.9499	4.5883	35.8829	4.7473	0.1867	-3.3493
5300	35.9359	4.5998	35.8714	4.7575	0.1798	-3.3148
5300	35.9357	4.6	35.8714	4.7575	0.1793	-3.3106

5300	35.9354	4.6001	35.8714	4.7575	0.1784	-3.3085
5300	35.935	4.6003	35.8714	4.7575	0.1773	-3.3043
5300	35.9346	4.6005	35.8714	4.7575	0.1762	-3.3001
5300	35.9343	4.6008	35.8714	4.7575	0.1753	-3.2937
5300	35.9341	4.601	35.8714	4.7575	0.1748	-3.2895
5300	35.9337	4.6012	35.8714	4.7575	0.1737	-3.2853
5300	35.9335	4.6013	35.8714	4.7575	0.1731	-3.2832
5310	35.9239	4.6144	35.8600	4.7678	0.1782	-3.2174
5310	35.9237	4.6146	35.8600	4.7678	0.1776	-3.2132
5310	35.9235	4.6148	35.8600	4.7678	0.1771	-3.209
5310	35.9234	4.615	35.8600	4.7678	0.1768	-3.2048
5310	35.9232	4.6153	35.8600	4.7678	0.1762	-3.1985
5310	35.923	4.6155	35.8600	4.7678	0.1757	-3.1943
5310	35.9228	4.6157	35.8600	4.7678	0.1751	-3.1902
5310	35.9227	4.6158	35.8600	4.7678	0.1748	-3.1881
5320	35.917	4.6264	35.8486	4.7780	0.1908	-3.1729
5320	35.9169	4.6266	35.8486	4.7780	0.1905	-3.1687
5320	35.9168	4.6268	35.8486	4.7780	0.1902	-3.1645
5320	35.9168	4.6269	35.8486	4.7780	0.1902	-3.1624
5320	35.9166	4.6271	35.8486	4.7780	0.1897	-3.1582
5320	35.9167	4.6273	35.8486	4.7780	0.19	-3.154
5320	35.9167	4.6275	35.8486	4.7780	0.19	-3.1499
5350	35.8686	4.6493	35.8500	4.8100	0.0519	-3.341

## Measurement Report for Dipole(5250.000MHz)

### Exposure Conditions

Phantom Section, TSL	Frequency [MHz], Channel Number	Conversion Factor	TSL Conductivity [S/m]	TSL Permittivity
Flat, HSL	5250.000, 0	4.98	4.53	36.0

### Hardware Setup

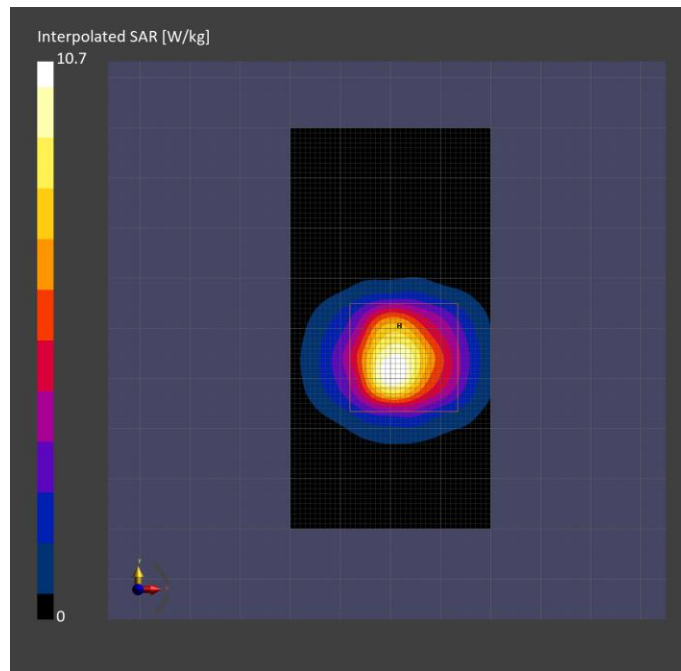
Phantom	TSL, Measured Date	Probe, Calibration Date	DAE, Calibration Date
ELI V8.0 (20deg probe tilt) - 2191	HBBL-600-10000 SLAAHU16BC221222-1, 2024-Jan-28	EX3DV4 - SN7783, 2023-01-24	DAE4 Sn1724, 2023-01-23

### Scan Setup

	Area Scan	Zoom Scan
Grid Extents [mm]	40.0 x 80.0	22.0 x 22.0 x 22.0
Grid Steps [mm]	10.0 x 10.0	4.0 x 4.0 x 1.4
Sensor Surface [mm]	3.0	1.4
Graded Grid	N/A	Yes
Grading Ratio	N/A	1.4
MAIA	N/A	N/A
Surface Detection	VMS + 6p	VMS + 6p
Scan Method	Measured	Measured

### Measurement Results

	Area Scan	Zoom Scan
Date	2024-01-28, 16:12	2024-01-28, 16:23
psSAR 1g [W/kg]	7.27	8.27
psSAR 10g [W/kg]	2.24	2.39
Power Drift [dB]	-0.09	0.03
Power Scaling	Disabled	Disabled
Scaling Factor [dB]		
TSL Correction	Positive / Negative	Positive / Negative
M2/M1 [%]		62.7
Dist 3dB Peak [mm]		7.4



; Name : DAK 3.5 Head 19.33 deg.C 2024-Feb-09 20:40:26						
; Date : 2024-Feb-09 20:40:26						
; Temperature(C) : 19.33						
; Probe : DAK 3.5						
; Network Analyzer : Agilent Network Analyzer						
	Measured data		Target data		Deviation %	
; MHz	EpsR	Sigma(S/m)	EpsR	Sigma(S/m)	EpsR	Sigma(S/m)
5150	36.2002	4.5365	36.0429	4.6038	0.4364	-1.4618
5180	36.2117	4.5575	36.0086	4.6345	0.564	-1.6615
5180	36.2116	4.5575	36.0086	4.6345	0.5638	-1.6615
5180	36.2115	4.5575	36.0086	4.6345	0.5635	-1.6615
5180	36.2114	4.5575	36.0086	4.6345	0.5632	-1.6615
5180	36.2113	4.5574	36.0086	4.6345	0.5629	-1.6636
5180	36.2113	4.5575	36.0086	4.6345	0.5629	-1.6615
5180	36.2114	4.5574	36.0086	4.6345	0.5632	-1.6636
5180	36.2115	4.5574	36.0086	4.6345	0.5635	-1.6636
5180	36.2117	4.5574	36.0086	4.6345	0.564	-1.6636
5180	36.2118	4.5574	36.0086	4.6345	0.5643	-1.6636
5180	36.2118	4.5573	36.0086	4.6345	0.5643	-1.6658
5180	36.212	4.5573	36.0086	4.6345	0.5649	-1.6658
5180	36.212	4.5573	36.0086	4.6345	0.5649	-1.6658
5180	36.2119	4.5572	36.0086	4.6345	0.5646	-1.6679
5180	36.2117	4.5572	36.0086	4.6345	0.564	-1.6679
5180	36.2114	4.5572	36.0086	4.6345	0.5632	-1.6679
5180	36.2111	4.5573	36.0086	4.6345	0.5624	-1.6658
5190	36.1916	4.5602	35.9971	4.6448	0.5403	-1.8214
5190	36.1913	4.5603	35.9971	4.6448	0.5395	-1.8192
5190	36.1909	4.5603	35.9971	4.6448	0.5384	-1.8192
5190	36.1905	4.5604	35.9971	4.6448	0.5373	-1.8171
5190	36.1902	4.5604	35.9971	4.6448	0.5364	-1.8171
5190	36.1898	4.5604	35.9971	4.6448	0.5353	-1.8171
5190	36.1896	4.5605	35.9971	4.6448	0.5348	-1.8149
5190	36.1894	4.5605	35.9971	4.6448	0.5342	-1.8149
5190	36.1893	4.5606	35.9971	4.6448	0.5339	-1.8128
5190	36.1893	4.5606	35.9971	4.6448	0.5339	-1.8128
5190	36.1894	4.5607	35.9971	4.6448	0.5342	-1.8106
5190	36.1895	4.5607	35.9971	4.6448	0.5345	-1.8106

5190	36.1895	4.5607	35.9971	4.6448	0.5345	-1.8106
5190	36.1896	4.5608	35.9971	4.6448	0.5348	-1.8085
5190	36.1896	4.5608	35.9971	4.6448	0.5348	-1.8085
5190	36.1896	4.5608	35.9971	4.6448	0.5348	-1.8085
5250	36.0191	4.641	35.9286	4.7063	0.2519	-1.3875



## Measurement Report for Dipole (5250.000MHz)

### Exposure Conditions

Phantom Section, TSL	Frequency [MHz], Channel Number	Conversion Factor	TSL Conductivity [S/m]	TSL Permittivity
Flat, HSL	5250.000, 0	4.98	4.64	36.0

### Hardware Setup

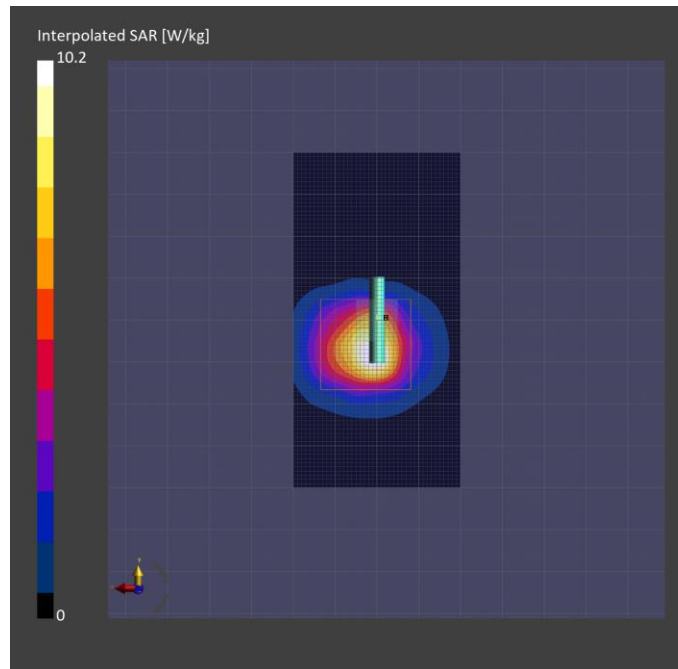
Phantom	TSL, Measured Date	Probe, Calibration Date	DAE, Calibration Date
ELI V8.0 (20deg probe tilt) - 2191	HBBL-600-10000 SLAAHU16BC221222-1, 2024-Feb-09	EX3DV4 - SN7783, 2023-01-24	DAE4 Sn1724, 2023-01-23

### Scan Setup

	Area Scan	Zoom Scan
Grid Extents [mm]	40.0 x 80.0	22.0 x 22.0 x 22.0
Grid Steps [mm]	10.0 x 10.0	4.0 x 4.0 x 1.4
Sensor Surface [mm]	3.0	1.4
Graded Grid	N/A	Yes
Grading Ratio	N/A	1.4
MAIA	N/A	N/A
Surface Detection	All points	All points
Scan Method	Measured	Measured

### Measurement Results

	Area Scan	Zoom Scan
Date	2024-02-09, 21:23	2024-02-09, 21:35
psSAR1g [W/kg]	6.89	8.06
psSAR10g [W/kg]	2.15	2.31
Power Drift [dB]	-0.04	-0.02
Power Scaling	Disabled	Disabled
Scaling Factor [dB]		
TSL Correction	Positive / Negative	Positive / Negative
M2/M1 [%]		61.6
Dist 3dB Peak [mm]		7.4



**5600MHz**

; Name : DAK 3.5 Head 18.55 deg.C 2024-Jan-03 17:02:50						
; Date : 2024-Jan-03 17:02:50						
; Temperature(C) : 18.55						
; Probe : DAK 3.5						
; Network Analyzer : Agilent Network Analyzer						
	Measured data		Target data		Deviation %	
; MHz	EpsR	Sigma(S/m)	EpsR	Sigma(S/m)	EpsR	Sigma(S/m)
5490	34.5659	4.8343	35.6650	4.9545	-3.0817	-2.4261
5500	34.5726	4.8422	35.6429	4.9625	-3.0028	-2.4242
5500	34.5725	4.8423	35.6429	4.9625	-3.0031	-2.4222
5500	34.5724	4.8424	35.6429	4.9625	-3.0034	-2.4202
5500	34.5722	4.8424	35.6429	4.9625	-3.004	-2.4202
5500	34.572	4.8425	35.6429	4.9625	-3.0045	-2.4181
5500	34.5719	4.8426	35.6429	4.9625	-3.0048	-2.4161
5500	34.5717	4.8426	35.6429	4.9625	-3.0054	-2.4161
5500	34.5717	4.8426	35.6429	4.9625	-3.0054	-2.4161
5510	34.5648	4.8453	35.6314	4.9728	-2.9934	-2.5639
5510	34.5646	4.8453	35.6314	4.9728	-2.994	-2.5639
5510	34.5646	4.8453	35.6314	4.9728	-2.994	-2.5639
5510	34.5645	4.8453	35.6314	4.9728	-2.9943	-2.5639
5510	34.5643	4.8453	35.6314	4.9728	-2.9948	-2.5639
5510	34.5641	4.8453	35.6314	4.9728	-2.9954	-2.5639
5510	34.5638	4.8453	35.6314	4.9728	-2.9962	-2.5639
5510	34.5634	4.8453	35.6314	4.9728	-2.9974	-2.5639
5510	34.5631	4.8453	35.6314	4.9728	-2.9982	-2.5639
5590	34.3616	4.9472	35.5400	5.0548	-3.3157	-2.1287
5590	34.3614	4.9476	35.5400	5.0548	-3.3163	-2.1208
5590	34.3614	4.9478	35.5400	5.0548	-3.3163	-2.1168
5590	34.3615	4.9481	35.5400	5.0548	-3.316	-2.1109
5590	34.3615	4.9484	35.5400	5.0548	-3.316	-2.1049
5590	34.3614	4.9486	35.5400	5.0548	-3.3163	-2.101
5590	34.3614	4.9489	35.5400	5.0548	-3.3163	-2.095
5590	34.3614	4.9492	35.5400	5.0548	-3.3163	-2.0891
5590	34.3612	4.9494	35.5400	5.0548	-3.3168	-2.0851
5600	34.3581	4.963	35.5286	5.0650	-3.2945	-2.0138
5600	34.3582	4.9631	35.5286	5.0650	-3.2942	-2.0118
5600	34.3583	4.9633	35.5286	5.0650	-3.294	-2.0079
5600	34.3584	4.9635	35.5286	5.0650	-3.2937	-2.0039

5600	34.3583	4.9637	35.5286	5.0650	-3.294	-2
5600	34.3583	4.9639	35.5286	5.0650	-3.294	-1.9961
5600	34.3582	4.9641	35.5286	5.0650	-3.2942	-1.9921
5600	34.3582	4.9643	35.5286	5.0650	-3.2942	-1.9882
5670	34.2217	5.0241	35.4486	5.1368	-3.4611	-2.194
5670	34.2215	5.0243	35.4486	5.1368	-3.4616	-2.1901
5670	34.2213	5.0245	35.4486	5.1368	-3.4622	-2.1862
5670	34.221	5.0247	35.4486	5.1368	-3.463	-2.1823
5670	34.2208	5.0249	35.4486	5.1368	-3.4636	-2.1784
5670	34.2204	5.025	35.4486	5.1368	-3.4647	-2.1765
5670	34.2202	5.0252	35.4486	5.1368	-3.4653	-2.1726
5670	34.22	5.0253	35.4486	5.1368	-3.4659	-2.1706
5670	34.2196	5.0254	35.4486	5.1368	-3.467	-2.1687
5675	34.2109	5.0319	35.4300	5.1400	-3.4409	-2.1031

## Measurement Report for Dipole(5600.000MHz)

### Exposure Conditions

Phantom Section, TSL	Frequency [MHz], Channel Number	Conversion Factor	TSL Conductivity [S/m]	TSL Permittivity
Flat, HSL	5600.000, 0	4.46	4.96	34.3

### Hardware Setup

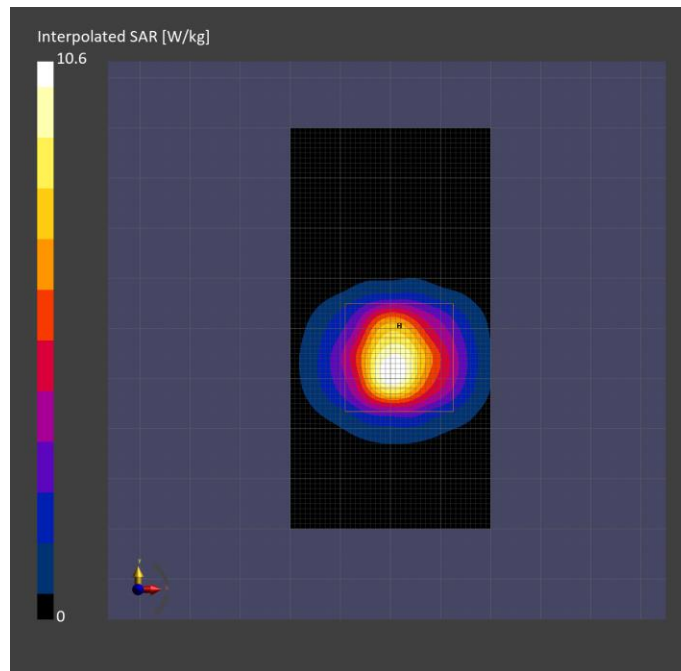
Phantom	TSL, Measured Date	Probe, Calibration Date	DAE, Calibration Date
ELI V8.0 (20deg probe tilt) - 2191	HBBL-600-10000 SLAAHU16BC221222-1, 2024-Jan-03	EX3DV4 - SN7783, 2023-01-24	DAE4 Sn1724, 2023-01-23

### Scan Setup

	Area Scan	Zoom Scan
Grid Extents [mm]	40.0 x 80.0	22.0 x 22.0 x 22.0
Grid Steps [mm]	10.0 x 10.0	4.0 x 4.0 x 1.4
Sensor Surface [mm]	3.0	1.4
Graded Grid	N/A	Yes
Grading Ratio	N/A	1.4
MAIA	N/A	N/A
Surface Detection	All points	All points
Scan Method	Measured	Measured

### Measurement Results

	Area Scan	Zoom Scan
Date	2024-01-03, 19:05	2024-01-03, 19:17
psSAR 1g [W/kg]	7.12	8.20
psSAR 10g [W/kg]	2.15	2.33
Power Drift [dB]	-0.02	-0.03
Power Scaling	Disabled	Disabled
Scaling Factor [dB]		
TSL Correction	Positive / Negative	Positive / Negative
M2/M1 [%]		59.6
Dist 3dB Peak [mm]		7.9



; Name : DAK 3.5 Head 19.11 deg.C 2024-Jan-22 17:38:43						
; Date : 2024-Jan-22 17:38:43						
; Temperature(C) : 19.11						
; Probe : DAK 3.5						
; Network Analyzer : Agilent Network Analyzer						
	Measured data		Target data		Deviation %	
; MHz	EpsR	Sigma(S/m)	EpsR	Sigma(S/m)	EpsR	Sigma(S/m)
5490	34.6439	4.7851	35.6650	4.9545	-2.863	-3.4191
5500	34.6515	4.7959	35.6429	4.9625	-2.7815	-3.3572
5500	34.6517	4.796	35.6429	4.9625	-2.7809	-3.3552
5500	34.6518	4.7961	35.6429	4.9625	-2.7806	-3.3531
5500	34.6517	4.7962	35.6429	4.9625	-2.7809	-3.3511
5500	34.6516	4.7962	35.6429	4.9625	-2.7812	-3.3511
5500	34.6515	4.7963	35.6429	4.9625	-2.7815	-3.3491
5500	34.6515	4.7964	35.6429	4.9625	-2.7815	-3.3471
5500	34.6514	4.7965	35.6429	4.9625	-2.7818	-3.3451
5510	34.6474	4.8019	35.6314	4.9728	-2.7616	-3.4367
5510	34.6474	4.802	35.6314	4.9728	-2.7616	-3.4347
5510	34.6474	4.802	35.6314	4.9728	-2.7616	-3.4347
5510	34.6473	4.802	35.6314	4.9728	-2.7619	-3.4347
5510	34.6471	4.802	35.6314	4.9728	-2.7625	-3.4347
5510	34.647	4.8021	35.6314	4.9728	-2.7627	-3.4327
5510	34.6468	4.802	35.6314	4.9728	-2.7633	-3.4347
5510	34.6466	4.802	35.6314	4.9728	-2.7639	-3.4347
5510	34.6466	4.8021	35.6314	4.9728	-2.7639	-3.4327
5590	34.4459	4.8928	35.5400	5.0548	-3.0785	-3.2049
5590	34.4457	4.893	35.5400	5.0548	-3.0791	-3.2009
5590	34.4456	4.8933	35.5400	5.0548	-3.0793	-3.195
5590	34.4454	4.8934	35.5400	5.0548	-3.0799	-3.193
5590	34.4452	4.8937	35.5400	5.0548	-3.0805	-3.1871
5590	34.445	4.8939	35.5400	5.0548	-3.081	-3.1831
5590	34.4449	4.8941	35.5400	5.0548	-3.0813	-3.1792
5590	34.4449	4.8942	35.5400	5.0548	-3.0813	-3.1772
5590	34.4448	4.8944	35.5400	5.0548	-3.0816	-3.1732
5600	34.4406	4.9094	35.5286	5.0650	-3.0623	-3.0721
5600	34.4406	4.9096	35.5286	5.0650	-3.0623	-3.0681
5600	34.4407	4.9098	35.5286	5.0650	-3.062	-3.0642
5600	34.4407	4.9099	35.5286	5.0650	-3.062	-3.0622
5600	34.4408	4.9101	35.5286	5.0650	-3.0618	-3.0582
5600	34.4407	4.9103	35.5286	5.0650	-3.062	-3.0543

5600	34.4408	4.9105	35.5286	5.0650	-3.0618	-3.0503
5600	34.4409	4.9107	35.5286	5.0650	-3.0615	-3.0464
5670	34.2976	4.9705	35.4486	5.1368	-3.247	-3.2374
5670	34.2972	4.9706	35.4486	5.1368	-3.2481	-3.2355
5670	34.2968	4.9707	35.4486	5.1368	-3.2492	-3.2335
5670	34.2964	4.9707	35.4486	5.1368	-3.2503	-3.2335
5670	34.2959	4.9708	35.4486	5.1368	-3.2518	-3.2316
5670	34.2956	4.9709	35.4486	5.1368	-3.2526	-3.2296
5670	34.2951	4.9711	35.4486	5.1368	-3.254	-3.2257
5670	34.2946	4.9712	35.4486	5.1368	-3.2554	-3.2238
5670	34.2943	4.9713	35.4486	5.1368	-3.2563	-3.2219
5675	34.2853	4.9769	35.4300	5.1400	-3.2309	-3.1732

## Measurement Report for Dipole(5600.000MHz)

### Exposure Conditions

Phantom Section, TSL	Frequency [MHz], Channel Number	Conversion Factor	TSL Conductivity [S/m]	TSL Permittivity
Flat, HSL	5600.000, 0	4.46	4.91	34.4

### Hardware Setup

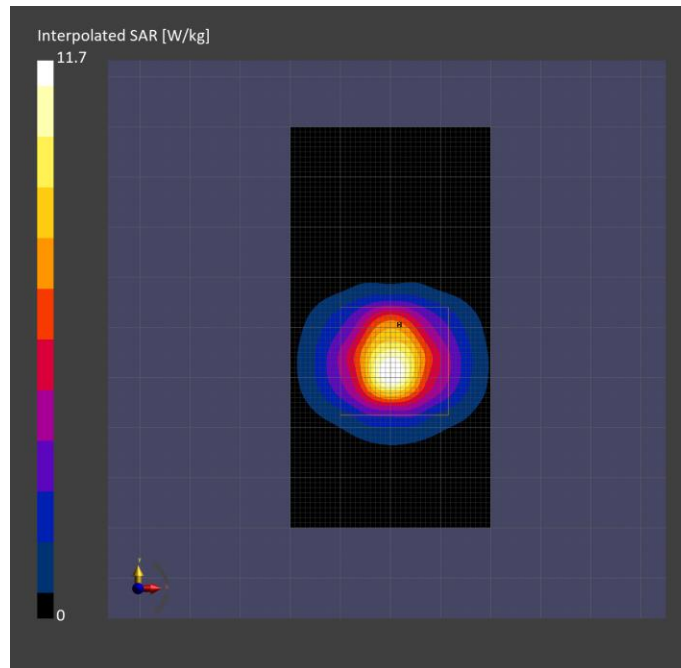
Phantom	TSL, Measured Date	Probe, Calibration Date	DAE, Calibration Date
ELI V8.0 (20deg probe tilt) - 2191	HBBL-600-10000 SLAAHU16BC221222-1, 2024-Jan-22	EX3DV4 - SN7783, 2023-01-24	DAE4 Sn1724, 2023-01-23

### Scan Setup

	Area Scan	Zoom Scan
Grid Extents [mm]	40.0 x 80.0	22.0 x 22.0 x 22.0
Grid Steps [mm]	10.0 x 10.0	4.0 x 4.0 x 1.4
Sensor Surface [mm]	3.0	1.4
Graded Grid	N/A	Yes
Grading Ratio	N/A	1.4
MAIA	N/A	N/A
Surface Detection	VMS + 6p	VMS + 6p
Scan Method	Measured	Measured

### Measurement Results

	Area Scan	Zoom Scan
Date	2024-01-22, 19:37	2024-01-22, 19:48
psSAR 1g [W/kg]	7.61	8.39
psSAR 10g [W/kg]	2.24	2.38
Power Drift [dB]	0.00	-0.07
Power Scaling	Disabled	Disabled
Scaling Factor [dB]		
TSL Correction	Positive / Negative	Positive / Negative
M2/M1 [%]		60.6
Dist 3dB Peak [mm]		7.4



; Name : DAK 3.5 Head 19.36 deg.C 2024-Jan-25 16:07:56						
; Date : 2024-Jan-25 16:07:56						
; Temperature(C) : 19.36						
; Probe : DAK 3.5						
; Network Analyzer : Agilent Network Analyzer						
	Measured data		Target data		Deviation %	
; MHz	EpsR	Sigma(S/m)	EpsR	Sigma(S/m)	EpsR	Sigma(S/m)
5490	34.4689	4.7947	35.6650	4.9545	-3.3537	-3.2254
5500	34.474	4.8048	35.6429	4.9625	-3.2795	-3.1778
5500	34.474	4.8049	35.6429	4.9625	-3.2795	-3.1758
5500	34.4741	4.8049	35.6429	4.9625	-3.2792	-3.1758
5500	34.4742	4.805	35.6429	4.9625	-3.2789	-3.1738
5500	34.4743	4.805	35.6429	4.9625	-3.2786	-3.1738
5500	34.4744	4.805	35.6429	4.9625	-3.2784	-3.1738
5500	34.4745	4.8051	35.6429	4.9625	-3.2781	-3.1718
5500	34.4746	4.8051	35.6429	4.9625	-3.2778	-3.1718
5510	34.4685	4.8106	35.6314	4.9728	-3.2637	-3.2617
5510	34.4683	4.8107	35.6314	4.9728	-3.2643	-3.2597
5510	34.4683	4.8108	35.6314	4.9728	-3.2643	-3.2577
5510	34.4682	4.8109	35.6314	4.9728	-3.2645	-3.2557
5510	34.4681	4.811	35.6314	4.9728	-3.2648	-3.2537
5510	34.4679	4.8111	35.6314	4.9728	-3.2654	-3.2517
5510	34.4678	4.8111	35.6314	4.9728	-3.2657	-3.2517
5510	34.4678	4.8112	35.6314	4.9728	-3.2657	-3.2497
5510	34.4677	4.8112	35.6314	4.9728	-3.2659	-3.2497
5590	34.268	4.902	35.5400	5.0548	-3.5791	-3.0229
5590	34.2679	4.9021	35.5400	5.0548	-3.5793	-3.0209
5590	34.2678	4.9023	35.5400	5.0548	-3.5796	-3.0169
5590	34.2677	4.9024	35.5400	5.0548	-3.5799	-3.015
5590	34.2675	4.9026	35.5400	5.0548	-3.5805	-3.011
5590	34.2673	4.9028	35.5400	5.0548	-3.581	-3.007
5590	34.2671	4.903	35.5400	5.0548	-3.5816	-3.0031
5590	34.267	4.9031	35.5400	5.0548	-3.5819	-3.0011
5590	34.2668	4.9033	35.5400	5.0548	-3.5824	-2.9972
5600	34.2583	4.9181	35.5286	5.0650	-3.5754	-2.9003
5600	34.2581	4.9182	35.5286	5.0650	-3.576	-2.8983
5600	34.258	4.9184	35.5286	5.0650	-3.5763	-2.8944
5600	34.258	4.9186	35.5286	5.0650	-3.5763	-2.8904
5600	34.2581	4.9188	35.5286	5.0650	-3.576	-2.8865
5600	34.2582	4.9189	35.5286	5.0650	-3.5757	-2.8845



5600	34.2581	4.9191	35.5286	5.0650	-3.576	-2.8806
5600	34.2581	4.9193	35.5286	5.0650	-3.576	-2.8766
5670	34.1271	4.9831	35.4486	5.1368	-3.7279	-2.9921
5670	34.1268	4.9833	35.4486	5.1368	-3.7288	-2.9882
5670	34.1265	4.9834	35.4486	5.1368	-3.7296	-2.9863
5670	34.1262	4.9836	35.4486	5.1368	-3.7305	-2.9824
5670	34.1259	4.9838	35.4486	5.1368	-3.7313	-2.9785
5670	34.1256	4.984	35.4486	5.1368	-3.7322	-2.9746
5670	34.1253	4.9841	35.4486	5.1368	-3.733	-2.9727
5670	34.1251	4.9843	35.4486	5.1368	-3.7336	-2.9688
5670	34.1249	4.9845	35.4486	5.1368	-3.7341	-2.9649
5675	34.1151	4.9898	35.4300	5.1400	-3.7113	-2.9222

## Measurement Report for Dipole(5600.000MHz)

### Exposure Conditions

Phantom Section, TSL	Frequency [MHz], Channel Number	Conversion Factor	TSL Conductivity [S/m]	TSL Permittivity
Flat, HSL	5600.000, 0	4.46	4.91	34.2

### Hardware Setup

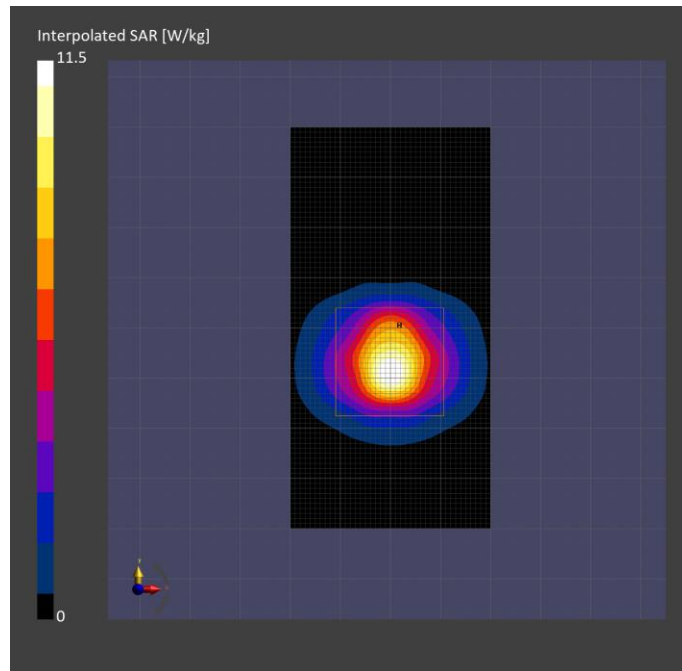
Phantom	TSL, Measured Date	Probe, Calibration Date	DAE, Calibration Date
ELI V8.0 (20deg probe tilt) - 2191	HBBL-600-10000 SLAAHU16BC221222-1, 2024-Jan-25	EX3DV4 - SN7783, 2023-01-24	DAE4 Sn1724, 2023-01-23

### Scan Setup

	Area Scan	Zoom Scan
Grid Extents [mm]	40.0 x 80.0	22.0 x 22.0 x 22.0
Grid Steps [mm]	10.0 x 10.0	4.0 x 4.0 x 1.4
Sensor Surface [mm]	3.0	1.4
Graded Grid	N/A	Yes
Grading Ratio	N/A	1.4
MAIA	N/A	N/A
Surface Detection	All points	All points
Scan Method	Measured	Measured

### Measurement Results

	Area Scan	Zoom Scan
Date	2024-01-25, 17:18	2024-01-25, 17:35
psSAR 1g [W/kg]	7.45	8.34
psSAR 10g [W/kg]	2.19	2.38
Power Drift [dB]	-0.04	-0.01
Power Scaling	Disabled	Disabled
Scaling Factor [dB]		
TSL Correction	Positive / Negative	Positive / Negative
M2/M1 [%]		60.5
Dist 3dB Peak [mm]		7.4



; Name : DAK 3.5 Head 18.61 deg.C 2024-Feb-09 20:35:46						
; Date : 2024-Feb-09 20:35:46						
; Temperature(C) : 18.61						
; Probe : DAK 3.5						
; Network Analyzer : Agilent Network Analyzer						
	Measured data		Target data		Deviation %	
; MHz	EpsR	Sigma(S/m)	EpsR	Sigma(S/m)	EpsR	Sigma(S/m)
5470	35.5473	4.8633	35.6950	4.9335	-0.4138	-1.4229
5500	35.541	4.8969	35.6429	4.9625	-0.2859	-1.3219
5500	35.541	4.897	35.6429	4.9625	-0.2859	-1.3199
5500	35.541	4.897	35.6429	4.9625	-0.2859	-1.3199
5500	35.541	4.897	35.6429	4.9625	-0.2859	-1.3199
5500	35.5411	4.8971	35.6429	4.9625	-0.2856	-1.3179
5500	35.5412	4.8972	35.6429	4.9625	-0.2853	-1.3159
5500	35.5412	4.8973	35.6429	4.9625	-0.2853	-1.3139
5500	35.5411	4.8973	35.6429	4.9625	-0.2856	-1.3139
5500	35.541	4.8973	35.6429	4.9625	-0.2859	-1.3139
5670	35.1891	5.0963	35.4486	5.1368	-0.732	-0.7884

## Measurement Report for Dipole (5600.000MHz)

### Exposure Conditions

Phantom Section, TSL	Frequency [MHz], Channel Number	Conversion Factor	TSL Conductivity [S/m]	TSL Permittivity
Flat, HSL	5600.000, 0	4.46	5.03	35.3

### Hardware Setup

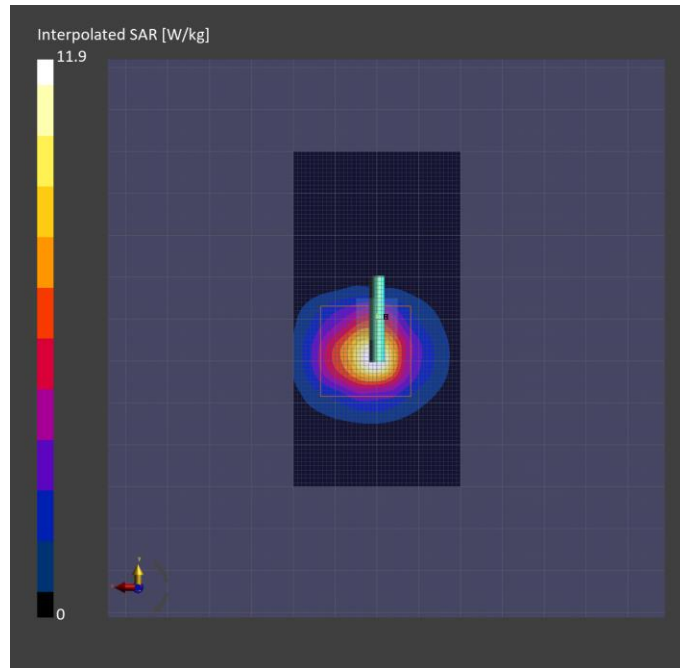
Phantom	TSL, Measured Date	Probe, Calibration Date	DAE, Calibration Date
ELI V8.0 (20deg probe tilt) - 2191	HBBL-600-10000 SLAAHU16BC221222-1, 2024-Feb-09	EX3DV4 - SN7783, 2023-01-24	DAE4 Sn1724, 2023-01-23

### Scan Setup

	Area Scan	Zoom Scan
Grid Extents [mm]	40.0 x 80.0	22.0 x 22.0 x 22.0
Grid Steps [mm]	10.0 x 10.0	4.0 x 4.0 x 1.4
Sensor Surface [mm]	3.0	1.4
Graded Grid	N/A	Yes
Grading Ratio	N/A	1.4
MAIA	N/A	N/A
Surface Detection	All points	All points
Scan Method	Measured	Measured

### Measurement Results

	Area Scan	Zoom Scan
Date	2024-02-09, 20:49	2024-02-09, 20:59
psSAR1g [W/kg]	7.65	8.41
psSAR10g [W/kg]	2.26	2.39
Power Drift [dB]	-0.04	-0.01
Power Scaling	Disabled	Disabled
Scaling Factor [dB]		
TSL Correction	Positive / Negative	Positive / Negative
M2/M1 [%]		59.5
Dist 3dB Peak [mm]		7.4



**5750MHz**

; Name : DAK 3.5 Head 19.2 deg.C 2024-Jan-05 18:03:03						
; Date : 2024-Jan-05 18:03:03						
; Temperature(C) : 19.2						
; Probe : DAK 3.5						
; Network Analyzer : Agilent Network Analyzer						
	Measured data		Target data		Deviation %	
; MHz	EpsR	Sigma(S/m)	EpsR	Sigma(S/m)	EpsR	Sigma(S/m)
5675	34.6488	4.9173	35.4260	5.1450	-2.1939	-4.4257
5745	34.6015	4.9909	35.3550	5.2150	-2.1312	-4.2972
5745	34.601	4.991	35.3550	5.2150	-2.1327	-4.2953
5745	34.6006	4.991	35.3550	5.2150	-2.1338	-4.2953
5745	34.6002	4.991	35.3550	5.2150	-2.1349	-4.2953
5745	34.5997	4.9911	35.3550	5.2150	-2.1363	-4.2934
5745	34.5991	4.9911	35.3550	5.2150	-2.138	-4.2934
5745	34.5986	4.9912	35.3550	5.2150	-2.1394	-4.2915
5745	34.5979	4.9912	35.3550	5.2150	-2.1414	-4.2915
5755	34.56	4.9973	35.3450	5.2250	-2.221	-4.3579
5755	34.5594	4.9975	35.3450	5.2250	-2.2227	-4.3541
5755	34.5588	4.9977	35.3450	5.2250	-2.2244	-4.3502
5755	34.5582	4.9979	35.3450	5.2250	-2.2261	-4.3464
5755	34.5575	4.9981	35.3450	5.2250	-2.228	-4.3426
5755	34.557	4.9982	35.3450	5.2250	-2.2295	-4.3407
5755	34.5563	4.9984	35.3450	5.2250	-2.2314	-4.3368
5755	34.5558	4.9985	35.3450	5.2250	-2.2328	-4.3349
5755	34.5552	4.9987	35.3450	5.2250	-2.2345	-4.3311
5785	34.4522	5.0362	35.3150	5.2550	-2.4432	-4.1637
5785	34.4518	5.0364	35.3150	5.2550	-2.4443	-4.1598
5785	34.4513	5.0365	35.3150	5.2550	-2.4457	-4.1579
5785	34.451	5.0367	35.3150	5.2550	-2.4466	-4.1541
5785	34.4507	5.0369	35.3150	5.2550	-2.4474	-4.1503
5785	34.4502	5.0371	35.3150	5.2550	-2.4488	-4.1465
5785	34.45	5.0373	35.3150	5.2550	-2.4494	-4.1427
5785	34.4498	5.0375	35.3150	5.2550	-2.45	-4.1389
5795	34.435	5.0535	35.3050	5.2650	-2.4642	-4.0171
5795	34.4349	5.0537	35.3050	5.2650	-2.4645	-4.0133
5795	34.4347	5.0539	35.3050	5.2650	-2.4651	-4.0095
5795	34.4345	5.0541	35.3050	5.2650	-2.4657	-4.0057
5795	34.4343	5.0544	35.3050	5.2650	-2.4662	-4

5795	34.4342	5.0546	35.3050	5.2650	-2.4665	-3.9962
5795	34.4341	5.0548	35.3050	5.2650	-2.4668	-3.9924
5795	34.4339	5.0551	35.3050	5.2650	-2.4674	-3.9867
5795	34.4338	5.0553	35.3050	5.2650	-2.4676	-3.9829
5825	34.4361	5.1039	35.2750	5.2963	-2.3782	-3.6327
5825	34.4363	5.104	35.2750	5.2963	-2.3776	-3.6308
5825	34.4363	5.1041	35.2750	5.2963	-2.3776	-3.6289
5825	34.4364	5.1042	35.2750	5.2963	-2.3773	-3.6271
5825	34.4363	5.1043	35.2750	5.2963	-2.3776	-3.6252
5825	34.4364	5.1044	35.2750	5.2963	-2.3773	-3.6233
5825	34.4364	5.1045	35.2750	5.2963	-2.3773	-3.6214
5825	34.4364	5.1047	35.2750	5.2963	-2.3773	-3.6176
5825	34.4364	5.1048	35.2750	5.2963	-2.3773	-3.6157
5860	34.4106	5.118	35.2400	5.3330	-2.3536	-4.0315

## Measurement Report for Dipole(5750.000MHz)

### Exposure Conditions

Phantom Section, TSL	Frequency [MHz], Channel Number	Conversion Factor	TSL Conductivity [S/m]	TSL Permittivity
Flat, HSL	5750.000, 0	4.52	4.99	34.5

### Hardware Setup

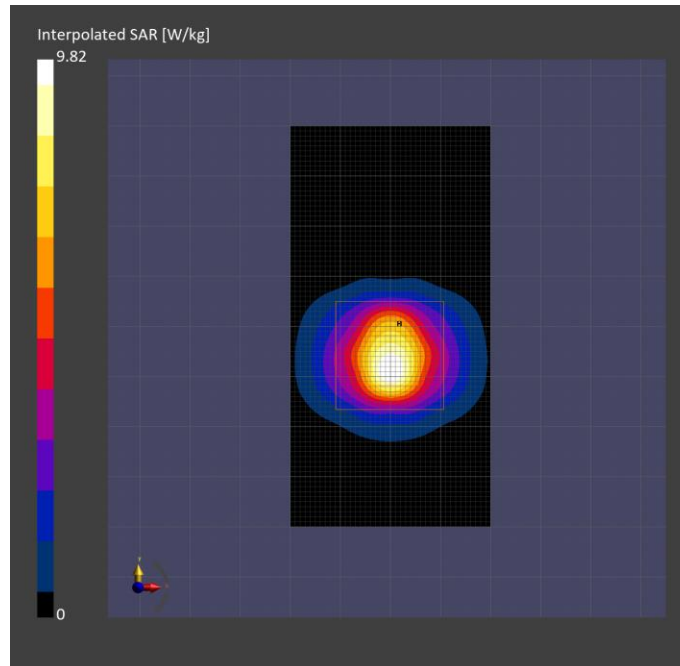
Phantom	TSL, Measured Date	Probe, Calibration Date	DAE, Calibration Date
ELI V8.0 (20deg probe tilt) - 2191	HBBL-600-10000 SLAAHU16BC221222-1, 2024-Jan-05	EX3DV4 - SN7783, 2023-01-24	DAE4 Sn1724, 2023-01-23

### Scan Setup

	Area Scan	Zoom Scan
Grid Extents [mm]	40.0 x 80.0	22.0 x 22.0 x 22.0
Grid Steps [mm]	10.0 x 10.0	4.0 x 4.0 x 1.4
Sensor Surface [mm]	3.0	1.4
Graded Grid	N/A	Yes
Grading Ratio	N/A	1.4
MAIA	N/A	N/A
Surface Detection	VMS + 6p	VMS + 6p
Scan Method	Measured	Measured

### Measurement Results

	Area Scan	Zoom Scan
Date	2024-01-05, 20:21	2024-01-05, 20:32
psSAR 1g [W/kg]	6.58	7.27
psSAR 10g [W/kg]	1.95	2.06
Power Drift [dB]	-0.00	0.00
Power Scaling	Disabled	Disabled
Scaling Factor [dB]		
TSL Correction	Positive / Negative	Positive / Negative
M2/M1 [%]		60.3
Dist 3dB Peak [mm]		7.3



; Name : DAK 3.5 Head 18.4 deg.C 2024-Jan-08 15:54:23						
; Date : 2024-Jan-08 15:54:23						
; Temperature(C) : 18.4						
; Probe : DAK 3.5						
; Network Analyzer : Agilent Network Analyzer						
	Measured data		Target data		Deviation %	
; MHz	EpsR	Sigma(S/m)	EpsR	Sigma(S/m)	EpsR	Sigma(S/m)
5675	34.7409	5.0561	35.4260	5.1450	-1.9339	-1.7279
5745	34.7249	5.1275	35.3550	5.2150	-1.7822	-1.6779
5745	34.7242	5.1275	35.3550	5.2150	-1.7842	-1.6779
5745	34.7234	5.1275	35.3550	5.2150	-1.7865	-1.6779
5745	34.7227	5.1276	35.3550	5.2150	-1.7884	-1.6759
5745	34.722	5.1276	35.3550	5.2150	-1.7904	-1.6759
5745	34.7214	5.1276	35.3550	5.2150	-1.7921	-1.6759
5745	34.7207	5.1277	35.3550	5.2150	-1.7941	-1.674
5745	34.7201	5.1278	35.3550	5.2150	-1.7958	-1.6721
5755	34.6782	5.1322	35.3450	5.2250	-1.8865	-1.7761
5755	34.6774	5.1323	35.3450	5.2250	-1.8888	-1.7742
5755	34.6768	5.1325	35.3450	5.2250	-1.8905	-1.7703
5755	34.6761	5.1327	35.3450	5.2250	-1.8925	-1.7665
5755	34.6755	5.1329	35.3450	5.2250	-1.8942	-1.7627
5755	34.675	5.1331	35.3450	5.2250	-1.8956	-1.7589
5755	34.6746	5.1333	35.3450	5.2250	-1.8967	-1.755
5755	34.6741	5.1335	35.3450	5.2250	-1.8981	-1.7512
5755	34.6735	5.1337	35.3450	5.2250	-1.8998	-1.7474
5785	34.5666	5.1777	35.3150	5.2550	-2.1192	-1.471
5785	34.5662	5.178	35.3150	5.2550	-2.1203	-1.4653
5785	34.5659	5.1783	35.3150	5.2550	-2.1212	-1.4596
5785	34.5658	5.1785	35.3150	5.2550	-2.1215	-1.4558
5785	34.5656	5.1787	35.3150	5.2550	-2.122	-1.452
5785	34.5654	5.1789	35.3150	5.2550	-2.1226	-1.4481
5785	34.5653	5.1792	35.3150	5.2550	-2.1229	-1.4424
5785	34.5651	5.1794	35.3150	5.2550	-2.1235	-1.4386
5795	34.5516	5.1977	35.3050	5.2650	-2.134	-1.2783
5795	34.5515	5.1979	35.3050	5.2650	-2.1343	-1.2745
5795	34.5513	5.1982	35.3050	5.2650	-2.1348	-1.2688
5795	34.5511	5.1984	35.3050	5.2650	-2.1354	-1.265
5795	34.5509	5.1986	35.3050	5.2650	-2.136	-1.2612
5795	34.5508	5.1988	35.3050	5.2650	-2.1362	-1.2574
5795	34.5508	5.199	35.3050	5.2650	-2.1362	-1.2536



5795	34.5508	5.1993	35.3050	5.2650	-2.1362	-1.2479
5795	34.5508	5.1995	35.3050	5.2650	-2.1362	-1.2441
5825	34.5502	5.2486	35.2750	5.2963	-2.0547	-0.9006
5825	34.5501	5.2487	35.2750	5.2963	-2.055	-0.8987
5825	34.5501	5.2488	35.2750	5.2963	-2.055	-0.8969
5825	34.5501	5.2489	35.2750	5.2963	-2.055	-0.895
5825	34.5501	5.249	35.2750	5.2963	-2.055	-0.8931
5825	34.5501	5.2492	35.2750	5.2963	-2.055	-0.8893
5825	34.5501	5.2493	35.2750	5.2963	-2.055	-0.8874
5825	34.5501	5.2494	35.2750	5.2963	-2.055	-0.8855
5825	34.55	5.2495	35.2750	5.2963	-2.0553	-0.8836
5860	34.4931	5.2554	35.2400	5.3330	-2.1195	-1.4551

## Measurement Report for Dipole(5750.000MHz)

### Exposure Conditions

Phantom Section, TSL	Frequency [MHz], Channel Number	Conversion Factor	TSL Conductivity [S/m]	TSL Permittivity
Flat, HSL	5750.000, 0	4.52	5.13	34.6

### Hardware Setup

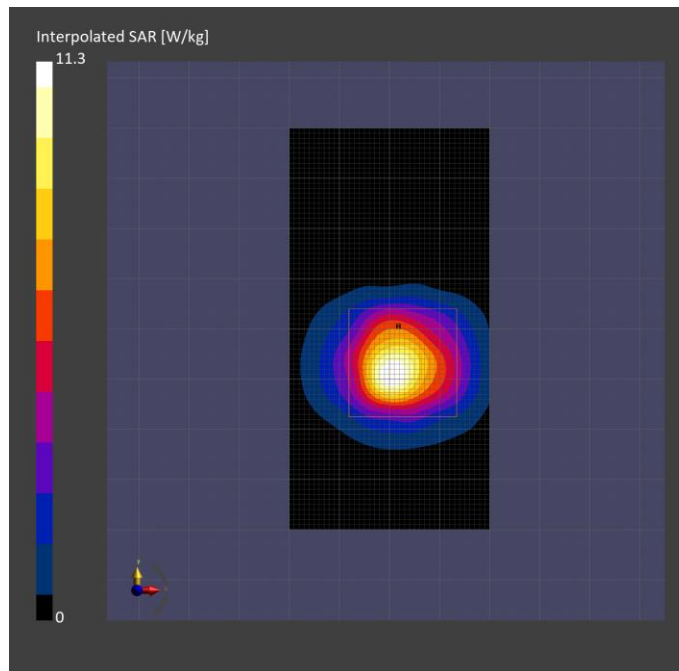
Phantom	TSL, Measured Date	Probe, Calibration Date	DAE, Calibration Date
ELI V8.0 (20deg probe tilt) - 2191	HBBL-600-10000 SLAAHU16BC221222-1, 2024-Jan-08	EX3DV4 - SN7783, 2023-01-24	DAE4 Sn1724, 2023-01-23

### Scan Setup

	Area Scan	Zoom Scan
Grid Extents [mm]	40.0 x 80.0	22.0 x 22.0 x 22.0
Grid Steps [mm]	10.0 x 10.0	4.0 x 4.0 x 1.4
Sensor Surface [mm]	3.0	1.4
Graded Grid	N/A	Yes
Grading Ratio	N/A	1.4
MAIA	N/A	N/A
Surface Detection	VMS + 6p	VMS + 6p
Scan Method	Measured	Measured

### Measurement Results

	Area Scan	Zoom Scan
Date	2024-01-08, 16:41	2024-01-08, 16:50
psSAR 1g [W/kg]	7.38	8.36
psSAR 10g [W/kg]	2.22	2.36
Power Drift [dB]	-0.01	0.03
Power Scaling	Disabled	Disabled
Scaling Factor [dB]		
TSL Correction	Positive / Negative	Positive / Negative
M2/M1 [%]		58.5
Dist 3dB Peak [mm]		7.9



; Name : DAK 3.5 Head 22.02 deg.C 2024-Jan-11 17:24:54						
; Date : 2024-Jan-11 17:24:54						
; Temperature(C) : 22.02						
; Probe : DAK 3.5						
; Network Analyzer : Agilent Network Analyzer						
	Measured data		Target data		Deviation %	
; MHz	EpsR	Sigma(S/m)	EpsR	Sigma(S/m)	EpsR	Sigma(S/m)
5675	34.2576	4.9899	35.4260	5.1450	-3.2981	-3.0146
5745	34.1555	5.0622	35.3550	5.2150	-3.3927	-2.93
5745	34.1549	5.0624	35.3550	5.2150	-3.3944	-2.9262
5745	34.1545	5.0625	35.3550	5.2150	-3.3956	-2.9243
5745	34.154	5.0627	35.3550	5.2150	-3.397	-2.9204
5745	34.1537	5.0628	35.3550	5.2150	-3.3978	-2.9185
5745	34.1533	5.063	35.3550	5.2150	-3.399	-2.9147
5745	34.153	5.0631	35.3550	5.2150	-3.3998	-2.9128
5745	34.1526	5.0631	35.3550	5.2150	-3.4009	-2.9128
5755	34.1254	5.0733	35.3450	5.2250	-3.4506	-2.9033
5755	34.125	5.0735	35.3450	5.2250	-3.4517	-2.8995
5755	34.1246	5.0737	35.3450	5.2250	-3.4528	-2.8957
5755	34.1242	5.0738	35.3450	5.2250	-3.454	-2.8938
5755	34.124	5.0738	35.3450	5.2250	-3.4545	-2.8938
5755	34.1236	5.0739	35.3450	5.2250	-3.4557	-2.8919
5755	34.1234	5.0739	35.3450	5.2250	-3.4562	-2.8919
5755	34.1232	5.074	35.3450	5.2250	-3.4568	-2.89
5755	34.1228	5.0741	35.3450	5.2250	-3.4579	-2.888
5785	34.0662	5.1094	35.3150	5.2550	-3.5362	-2.7707
5785	34.0661	5.1095	35.3150	5.2550	-3.5365	-2.7688
5785	34.0659	5.1097	35.3150	5.2550	-3.537	-2.765
5785	34.0655	5.1099	35.3150	5.2550	-3.5382	-2.7612
5785	34.0653	5.11	35.3150	5.2550	-3.5387	-2.7593
5785	34.0651	5.1102	35.3150	5.2550	-3.5393	-2.7555
5785	34.0649	5.1104	35.3150	5.2550	-3.5399	-2.7517
5785	34.0646	5.1105	35.3150	5.2550	-3.5407	-2.7498
5795	34.0534	5.1218	35.3050	5.2650	-3.5451	-2.7198
5795	34.0534	5.122	35.3050	5.2650	-3.5451	-2.716
5795	34.0534	5.1221	35.3050	5.2650	-3.5451	-2.7142
5795	34.0533	5.1223	35.3050	5.2650	-3.5454	-2.7104
5795	34.0533	5.1224	35.3050	5.2650	-3.5454	-2.7085
5795	34.0532	5.1225	35.3050	5.2650	-3.5457	-2.7066
5795	34.0531	5.1226	35.3050	5.2650	-3.546	-2.7047

5795	34.053	5.1227	35.3050	5.2650	-3.5462	-2.7028
5795	34.0528	5.1228	35.3050	5.2650	-3.5468	-2.7009
5825	34.0215	5.1622	35.2750	5.2963	-3.5535	-2.532
5825	34.0215	5.1624	35.2750	5.2963	-3.5535	-2.5282
5825	34.0214	5.1626	35.2750	5.2963	-3.5538	-2.5244
5825	34.0212	5.1628	35.2750	5.2963	-3.5544	-2.5206
5825	34.0211	5.1631	35.2750	5.2963	-3.5546	-2.515
5825	34.021	5.1633	35.2750	5.2963	-3.5549	-2.5112
5825	34.021	5.1635	35.2750	5.2963	-3.5549	-2.5074
5825	34.0212	5.1637	35.2750	5.2963	-3.5544	-2.5036
5825	34.0213	5.1639	35.2750	5.2963	-3.5541	-2.4999
5860	33.9861	5.1934	35.2400	5.3330	-3.5582	-2.6177

## Measurement Report for Dipole(5750.000MHz)

### Exposure Conditions

Phantom Section, TSL	sFrequency [MHz], Channel Number	Conversion Factor	TSL Conductivity [S/m]	TSL Permittivity
Flat, HSL	5750.000, 0	4.52	5.07	34.1

### Hardware Setup

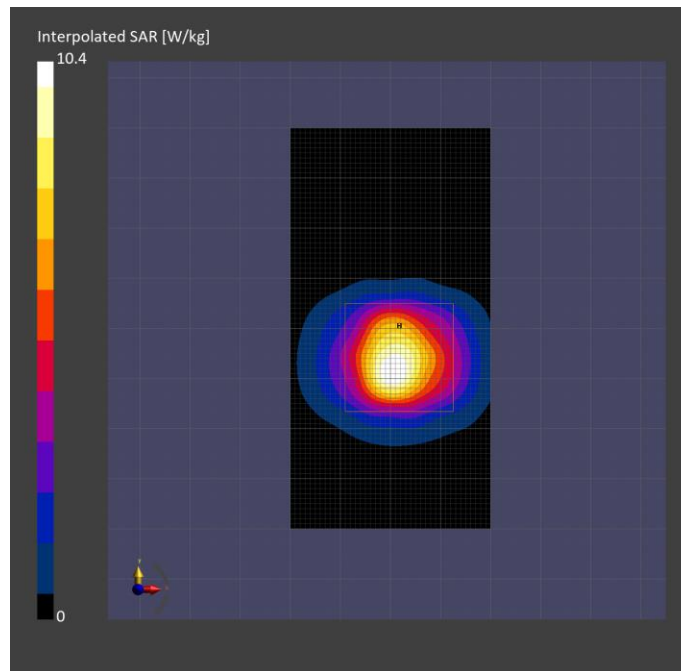
Phantom	TSL, Measured Date	Probe, Calibration Date	DAE, Calibration Date
ELI V8.0 (20deg probe tilt) - 2191	HBBL-600-10000 SLAAHU16BC221222-1, 2024-Jan-11	EX3DV4 - SN7783, 2023-01-24	DAE4 Sn1724, 2023-01-23

### Scan Setup

	Area Scan	Zoom Scan
Grid Extents [mm]	40.0 x 80.0	22.0 x 22.0 x 22.0
Grid Steps [mm]	10.0 x 10.0	4.0 x 4.0 x 1.4
Sensor Surface [mm]	3.0	1.4
Graded Grid	N/A	Yes
Grading Ratio	N/A	1.4
MAIA	N/A	N/A
Surface Detection	VMS + 6p	VMS + 6p
Scan Method	Measured	Measured

### Measurement Results

	Area Scan	Zoom Scan
Date	2024-01-11, 18:11	2024-01-11, 18:22
psSAR 1g [W/kg]	7.15	8.13
psSAR 10g [W/kg]	2.18	2.31
Power Drift [dB]	0.01	0.02
Power Scaling	Disabled	Disabled
Scaling Factor [dB]		
TSL Correction	Positive / Negative	Positive / Negative
M2/M1 [%]		59.4
Dist 3dB Peak [mm]		7.4



; Name : DAK 3.5 Head 19.9 deg.C 2024-Jan-20 17:22:27						
; Date : 2024-Jan-20 17:22:27						
; Temperature(C) : 19.9						
; Probe : DAK 3.5						
; Network Analyzer : Agilent Network Analyzer						
	Measured data		Target data		Deviation %	
; MHz	EpsR	Sigma(S/m)	EpsR	Sigma(S/m)	EpsR	Sigma(S/m)
5675	34.1532	4.963	35.4260	5.1450	-3.5928	-3.5374
5745	34.0227	5.0407	35.3550	5.2150	-3.7683	-3.3423
5745	34.0224	5.0409	35.3550	5.2150	-3.7692	-3.3384
5745	34.0222	5.041	35.3550	5.2150	-3.7698	-3.3365
5745	34.022	5.0412	35.3550	5.2150	-3.7703	-3.3327
5745	34.0219	5.0413	35.3550	5.2150	-3.7706	-3.3308
5745	34.0217	5.0414	35.3550	5.2150	-3.7712	-3.3289
5745	34.0216	5.0416	35.3550	5.2150	-3.7715	-3.325
5745	34.0215	5.0417	35.3550	5.2150	-3.7717	-3.3231
5755	34.0043	5.0547	35.3450	5.2250	-3.7932	-3.2593
5755	34.0041	5.055	35.3450	5.2250	-3.7937	-3.2536
5755	34.0039	5.0553	35.3450	5.2250	-3.7943	-3.2478
5755	34.0038	5.0555	35.3450	5.2250	-3.7946	-3.244
5755	34.0037	5.0556	35.3450	5.2250	-3.7949	-3.2421
5755	34.0036	5.0558	35.3450	5.2250	-3.7952	-3.2383
5755	34.0034	5.056	35.3450	5.2250	-3.7957	-3.2344
5755	34.0031	5.0561	35.3450	5.2250	-3.7966	-3.2325
5755	34.0029	5.0563	35.3450	5.2250	-3.7971	-3.2287
5785	33.9836	5.0932	35.3150	5.2550	-3.7701	-3.079
5785	33.9835	5.0933	35.3150	5.2550	-3.7704	-3.0771
5785	33.9833	5.0934	35.3150	5.2550	-3.7709	-3.0752
5785	33.9832	5.0935	35.3150	5.2550	-3.7712	-3.0733
5785	33.983	5.0936	35.3150	5.2550	-3.7718	-3.0714
5785	33.9827	5.0936	35.3150	5.2550	-3.7726	-3.0714
5785	33.9825	5.0937	35.3150	5.2550	-3.7732	-3.0695
5785	33.9823	5.0938	35.3150	5.2550	-3.7738	-3.0676
5795	33.9728	5.103	35.3050	5.2650	-3.7734	-3.0769
5795	33.9727	5.1031	35.3050	5.2650	-3.7737	-3.075
5795	33.9725	5.1032	35.3050	5.2650	-3.7743	-3.0731
5795	33.9725	5.1033	35.3050	5.2650	-3.7743	-3.0712
5795	33.9725	5.1034	35.3050	5.2650	-3.7743	-3.0693
5795	33.9724	5.1034	35.3050	5.2650	-3.7745	-3.0693
5795	33.9723	5.1035	35.3050	5.2650	-3.7748	-3.0674

5795	33.9722	5.1036	35.3050	5.2650	-3.7751	-3.0655
5795	33.972	5.1036	35.3050	5.2650	-3.7757	-3.0655
5825	33.916	5.133	35.2750	5.2963	-3.8526	-3.0833
5825	33.9157	5.1331	35.2750	5.2963	-3.8534	-3.0814
5825	33.9153	5.1333	35.2750	5.2963	-3.8546	-3.0776
5825	33.9149	5.1334	35.2750	5.2963	-3.8557	-3.0757
5825	33.9144	5.1336	35.2750	5.2963	-3.8571	-3.072
5825	33.9141	5.1338	35.2750	5.2963	-3.858	-3.0682
5825	33.9138	5.134	35.2750	5.2963	-3.8588	-3.0644
5825	33.9136	5.1341	35.2750	5.2963	-3.8594	-3.0625
5825	33.9134	5.1343	35.2750	5.2963	-3.86	-3.0587
5860	33.8431	5.1613	35.2400	5.3330	-3.964	-3.2196

## Measurement Report for Dipole(5750.000MHz)

### Exposure Conditions

Phantom Section, TSL	Frequency [MHz], Channel Number	Conversion Factor	TSL Conductivity [S/m]	TSL Permittivity
Flat, HSL	5750.000, 0	4.52	5.05	34.0

### Hardware Setup

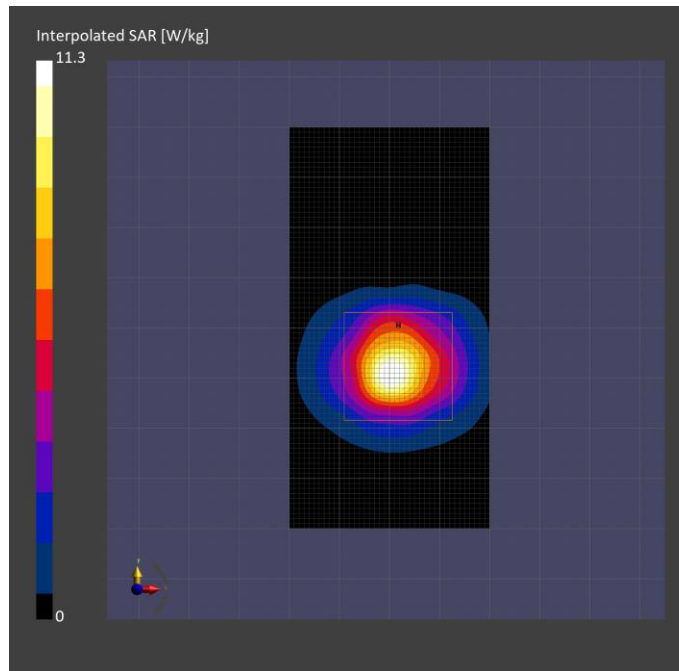
Phantom	TSL, Measured Date	Probe, Calibration Date	DAE, Calibration Date
ELI V8.0 (20deg probe tilt) - 2191	HBBL-600-10000 SLAAHU16BC221222-1, 2024-Jan-20	EX3DV4 - SN7783, 2023-01-24	DAE4 Sn1724, 2023-01-23

### Scan Setup

	Area Scan	Zoom Scan
Grid Extents [mm]	40.0 x 80.0	22.0 x 22.0 x 22.0
Grid Steps [mm]	10.0 x 10.0	4.0 x 4.0 x 1.4
Sensor Surface [mm]	3.0	1.4
Graded Grid	N/A	Yes
Grading Ratio	N/A	1.4
MAIA	N/A	N/A
Surface Detection	VMS + 6p	VMS + 6p
Scan Method	Measured	Measured

### Measurement Results

	Area Scan	Zoom Scan
Date	2024-01-20, 19:05	2024-01-20, 19:13
psSAR 1g [W/kg]	7.28	8.23
psSAR 10g [W/kg]	2.18	2.35
Power Drift [dB]	0.03	0.04
Power Scaling	Disabled	Disabled
Scaling Factor [dB]		
TSL Correction	Positive / Negative	Positive / Negative
M2/M1 [%]		60.5
Dist 3dB Peak [mm]		7.2





; Probe : DAK 3.5						
; Name : DAK 3.5 Head 22.35 deg.C 2024-Jan-28 16:51:50						
; Date : 2024-Jan-28 16:51:50						
; Temperature(C) : 22.35						
; Probe : DAK 3.5						
	Measured data		Target data		Deviation %	
; MHz	EpsR	Sigma(S/m)	EpsR	Sigma(S/m)	EpsR	Sigma(S/m)
5675	35.2217	4.9236	35.4260	5.1450	-0.5767	-4.3032
5700	35.1643	4.9527	35.4143	5.1675	-0.7059	-4.1567
5700	35.1641	4.9528	35.4143	5.1675	-0.7065	-4.1548
5700	35.1638	4.9529	35.4143	5.1675	-0.7073	-4.1529
5700	35.1636	4.9529	35.4143	5.1675	-0.7079	-4.1529
5700	35.1632	4.953	35.4143	5.1675	-0.709	-4.1509
5700	35.1628	4.9531	35.4143	5.1675	-0.7102	-4.149
5700	35.1623	4.9533	35.4143	5.1675	-0.7116	-4.1451
5700	35.1619	4.9534	35.4143	5.1675	-0.7127	-4.1432
5700	35.1616	4.9535	35.4143	5.1675	-0.7136	-4.1413
5745	35.1119	5.0047	35.3550	5.2150	-0.6876	-4.0326
5745	35.1115	5.0049	35.3550	5.2150	-0.6887	-4.0288
5745	35.1113	5.0051	35.3550	5.2150	-0.6893	-4.0249
5745	35.1109	5.0053	35.3550	5.2150	-0.6904	-4.0211
5745	35.1106	5.0055	35.3550	5.2150	-0.6913	-4.0173
5745	35.1103	5.0057	35.3550	5.2150	-0.6921	-4.0134
5745	35.1101	5.0059	35.3550	5.2150	-0.6927	-4.0096
5745	35.1098	5.0061	35.3550	5.2150	-0.6935	-4.0058
5755	35.0926	5.018	35.3450	5.2250	-0.7141	-3.9617
5755	35.0927	5.0182	35.3450	5.2250	-0.7138	-3.9579
5755	35.0926	5.0183	35.3450	5.2250	-0.7141	-3.956
5755	35.0925	5.0185	35.3450	5.2250	-0.7144	-3.9522
5755	35.0925	5.0188	35.3450	5.2250	-0.7144	-3.9464
5755	35.0925	5.0189	35.3450	5.2250	-0.7144	-3.9445
5755	35.0926	5.0191	35.3450	5.2250	-0.7141	-3.9407
5755	35.0924	5.0193	35.3450	5.2250	-0.7147	-3.9368
5755	35.0924	5.0194	35.3450	5.2250	-0.7147	-3.9349
5785	35.0455	5.0503	35.3150	5.2550	-0.7631	-3.8953
5785	35.0453	5.0504	35.3150	5.2550	-0.7637	-3.8934
5785	35.0449	5.0506	35.3150	5.2550	-0.7648	-3.8896

5785	35.0446	5.0507	35.3150	5.2550	-0.7657	-3.8877
5785	35.0444	5.0508	35.3150	5.2550	-0.7662	-3.8858
5785	35.0442	5.0509	35.3150	5.2550	-0.7668	-3.8839
5785	35.0441	5.051	35.3150	5.2550	-0.7671	-3.882
5785	35.0439	5.051	35.3150	5.2550	-0.7677	-3.882
5795	35.0238	5.0602	35.3050	5.2650	-0.7965	-3.8898
5795	35.0236	5.0604	35.3050	5.2650	-0.7971	-3.886
5795	35.0233	5.0605	35.3050	5.2650	-0.7979	-3.8841
5795	35.023	5.0606	35.3050	5.2650	-0.7988	-3.8822
5795	35.0227	5.0608	35.3050	5.2650	-0.7996	-3.8784
5795	35.0222	5.0609	35.3050	5.2650	-0.801	-3.8765
5795	35.0219	5.061	35.3050	5.2650	-0.8019	-3.8746
5795	35.0215	5.0611	35.3050	5.2650	-0.803	-3.8727
5795	35.0211	5.0612	35.3050	5.2650	-0.8041	-3.8708
5825	34.9559	5.0973	35.2750	5.2963	-0.9046	-3.7573
5825	34.9557	5.0974	35.2750	5.2963	-0.9052	-3.7555
5825	34.9554	5.0975	35.2750	5.2963	-0.906	-3.7536
5825	34.9551	5.0976	35.2750	5.2963	-0.9069	-3.7517
5825	34.9547	5.0978	35.2750	5.2963	-0.908	-3.7479
5825	34.9543	5.0979	35.2750	5.2963	-0.9091	-3.746
5825	34.9539	5.098	35.2750	5.2963	-0.9103	-3.7441
5825	34.9536	5.0981	35.2750	5.2963	-0.9111	-3.7422
5825	34.9533	5.0983	35.2750	5.2963	-0.912	-3.7385
5860	34.9108	5.133	35.2400	5.3330	-0.9342	-3.7502

## Measurement Report for Dipole(5750.000MHz)

### Exposure Conditions

Phantom Section, TSL	Frequency [MHz], Channel Number	Conversion Factor	TSL Conductivity [S/m]	TSL Permittivity
Flat, HSL	5750.000, 0	4.52	5.01	35.1

### Hardware Setup

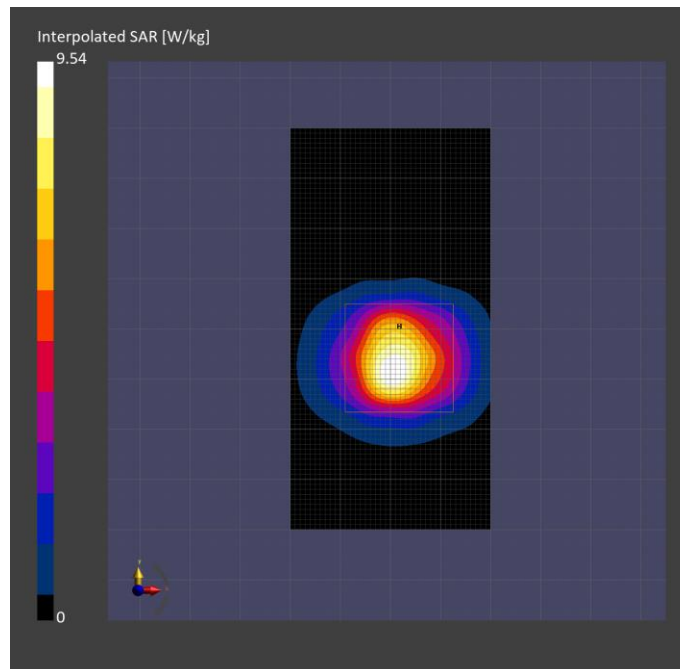
Phantom	TSL, Measured Date	Probe, Calibration Date	DAE, Calibration Date
ELI V8.0 (20deg probe tilt) - 2191	HBBL-600-10000 SLAAHU16BC221222-1, 2024-Jan-28	EX3DV4 - SN7783, 2023-01-24	DAE4 Sn1724, 2023-01-23

### Scan Setup

	Area Scan	Zoom Scan
Grid Extents [mm]	40.0 x 80.0	22.0 x 22.0 x 22.0
Grid Steps [mm]	10.0 x 10.0	4.0 x 4.0 x 1.4
Sensor Surface [mm]	3.0	1.4
Graded Grid	N/A	Yes
Grading Ratio	N/A	1.4
MAIA	N/A	N/A
Surface Detection	VMS + 6p	VMS + 6p
Scan Method	Measured	Measured

### Measurement Results

	Area Scan	Zoom Scan
Date	2024-01-28, 17:07	2024-01-28, 17:18
psSAR 1g [W/kg]	6.57	7.44
psSAR 10g [W/kg]	2.01	2.13
Power Drift [dB]	0.01	-0.01
Power Scaling	Disabled	Disabled
Scaling Factor [dB]		
TSL Correction	Positive / Negative	Positive / Negative
M2/M1 [%]		59.5
Dist 3dB Peak [mm]		7.6



; Name : DAK 3.5 Head 20 deg.C 2024-Feb-11 12:45:25						
; Date : 2024-Feb-11 12:45:25						
; Temperature(C) : 20						
; Probe : DAK 3.5						
; Network Analyzer : Agilent Network Analyzer						
	Measured data		Target data		Deviation %	
; MHz	EpsR	Sigma(S/m)	EpsR	Sigma(S/m)	EpsR	Sigma(S/m)
5670	35.7766	5.099	35.4486	5.1368	0.9253	-0.7359
5700	35.8333	5.1775	35.4143	5.1675	1.1831	0.1935
5700	35.834	5.1778	35.4143	5.1675	1.1851	0.1993
5700	35.8347	5.1781	35.4143	5.1675	1.1871	0.2051
5700	35.8354	5.1784	35.4143	5.1675	1.1891	0.2109
5700	35.8359	5.1787	35.4143	5.1675	1.1905	0.2167
5700	35.8364	5.1789	35.4143	5.1675	1.1919	0.2206
5700	35.8369	5.1792	35.4143	5.1675	1.1933	0.2264
5700	35.8374	5.1795	35.4143	5.1675	1.1947	0.2322
5860	35.7137	5.3173	35.2400	5.3330	1.3442	-0.2944

## Measurement Report for Dipole (5750.000MHz)

### Exposure Conditions

Phantom Section, TSL	Frequency [MHz], Channel Number	Conversion Factor	TSL Conductivity [S/m]	TSL Permittivity
Flat, HSL	5750.000, 0	4.52	5.18	35.8

### Hardware Setup

Phantom	TSL, Measured Date	Probe, Calibration Date	DAE, Calibration Date
ELI V8.0 (20deg probe tilt) - 2191	HBBL-600-10000 SLAAHU16BC221222-1, 2024-Feb-11	EX3DV4 - SN7783, 2023-01-24	DAE4 Sn1724, 2023-01-23

### Scan Setup

	Area Scan	Zoom Scan
Grid Extents [mm]	40.0 x 80.0	22.0 x 22.0 x 22.0
Grid Steps [mm]	10.0 x 10.0	4.0 x 4.0 x 1.4
Sensor Surface [mm]	3.0	1.4
Graded Grid	N/A	Yes
Grading Ratio	N/A	1.4
MAIA	N/A	N/A
Surface Detection	All points	All points
Scan Method	Measured	Measured

### Measurement Results

	Area Scan	Zoom Scan
Date	2024-02-11, 12:54	2024-02-11, 13:11
psSAR1g [W/kg]	6.91	7.73
psSAR10g [W/kg]	2.05	2.20
Power Drift [dB]	-0.03	-0.07
Power Scaling	Disabled	Disabled
Scaling Factor [dB]		
TSL Correction	Positive / Negative	Positive / Negative
M2/M1 [%]		58.4
Dist 3dB Peak [mm]		7.4

