



Roku Brewster Roku DVT2 Antenna Performance Report

2022-0102

Prepared By: Delroy Rebello

Date: 28th September 2023

NASDAQ:AIRG © Copyright 2021 Airgain, Inc. All Rights Reserved.

Table of Contents



Introduction

Antenna System Proposal

Return Loss and Isolation

Antenna Efficiency and Peak Gain

Antenna Radiation Patterns

Conclusion

Introduction



- An Antenna System concept is proposed by Airgain for the Roku Brewster
Airgain received a unit from Roku (BRT-D1-0114)
- Antenna configuration
 - 2x2 @ WiFi Dual Band for 2.4GHz + 5GHz
 - 1x1 @ Single Band for 2.4GHz ZigBee/BLE/THREAD (3 IOT protocols)
- All antennas are PCBA feed stamp metal antenna with matching circuit
- This report shows passive measured results for all antennas

Antenna Specification – Passive Requirements



Basic Passive Requirements

RL for each antennas $> 10\text{dB}$

Isolation (coupling between all antennas) $\geq 20\text{dB}$

Efficiency (including cable losses)

$>60\%$ (for 2.4GHz band)

$>60\%$ (for 5GHz band)

Peak Gain (including cable losses)

$<6\text{dBi}$ @2.4GHz

$<6\text{dBi}$ @5GHz

Antenna System Proposal

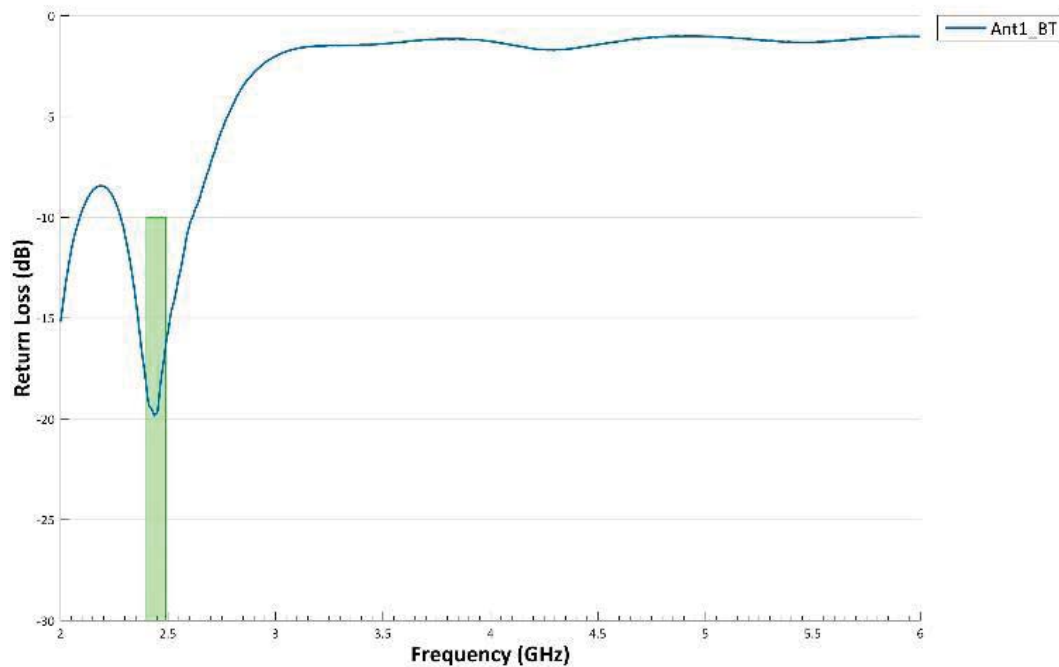
Airgain Antenna System



Antenna #	Airgain Part Numbers (PNs)	Cable length [mm]
Ant1_BT	M2450LNTSU2	NA
Ant2_DB	M2450LNTSU2	NA
Ant3_DB	M2450LNTSU2	NA

S-Parameters Return Loss, Isolation

S-Parameter – Return Loss for Ant1_BT

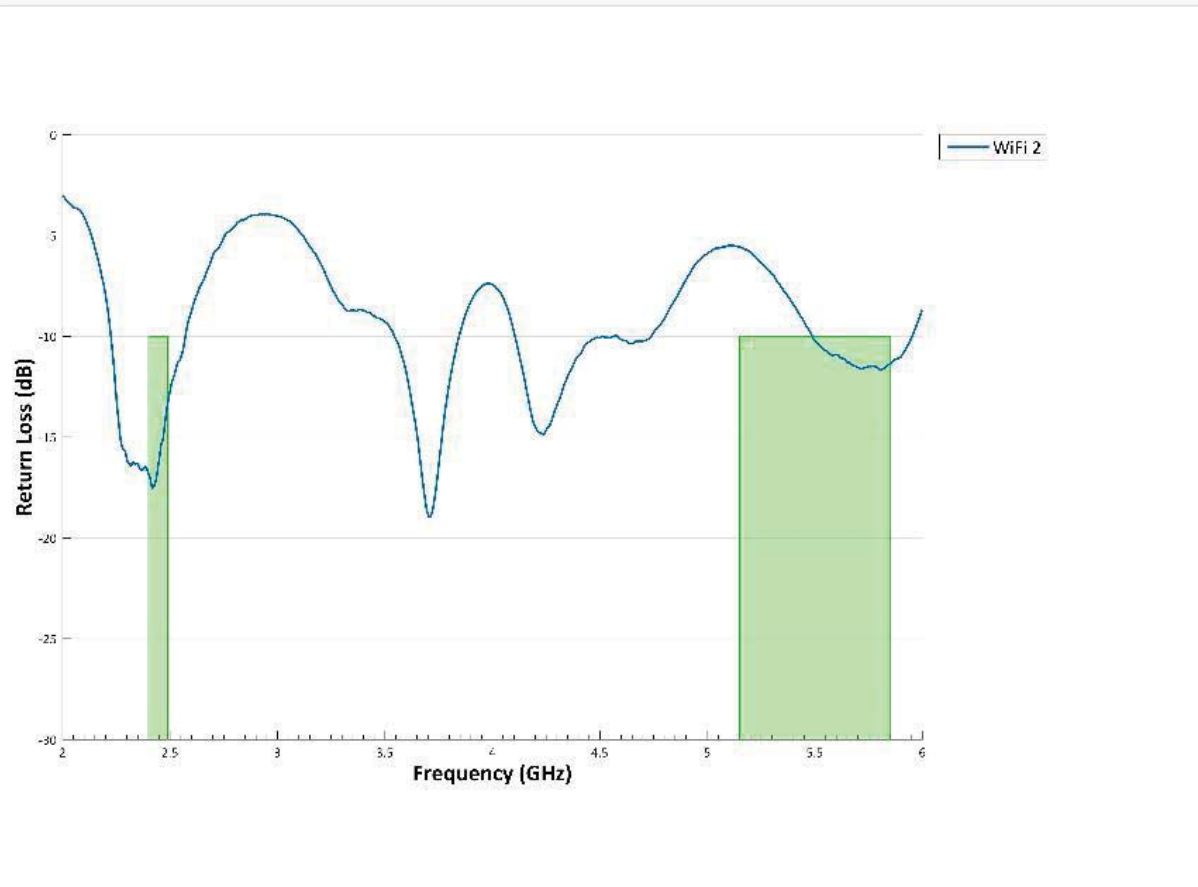


KEY OBSERVATIONS

Antenna	Return Loss (dB)	
	2.4 GHz	2.49 GHz
Ant1_BT	-18.4	-16.2

The matching network is good as implemented

S-Parameter – Return Loss for Ant3_WiFi 2

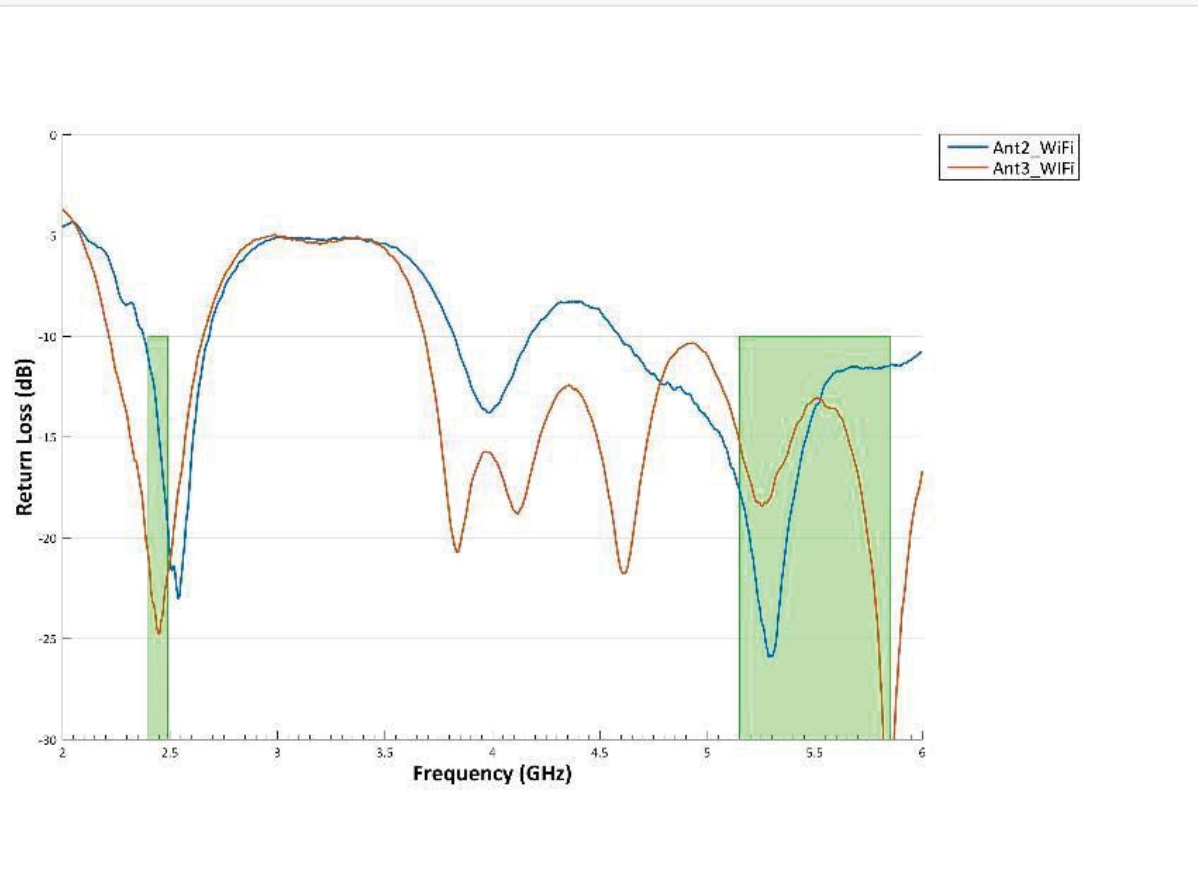


KEY OBSERVATIONS

Antenna	Return Loss (dB)			
	2.4 GHz	2.49 GHz	5.15 GHz	5.85 GHz
Ant2_WiFi1	-16.8	-13.3	-5.5	-11.4

The matching network needs to be updated

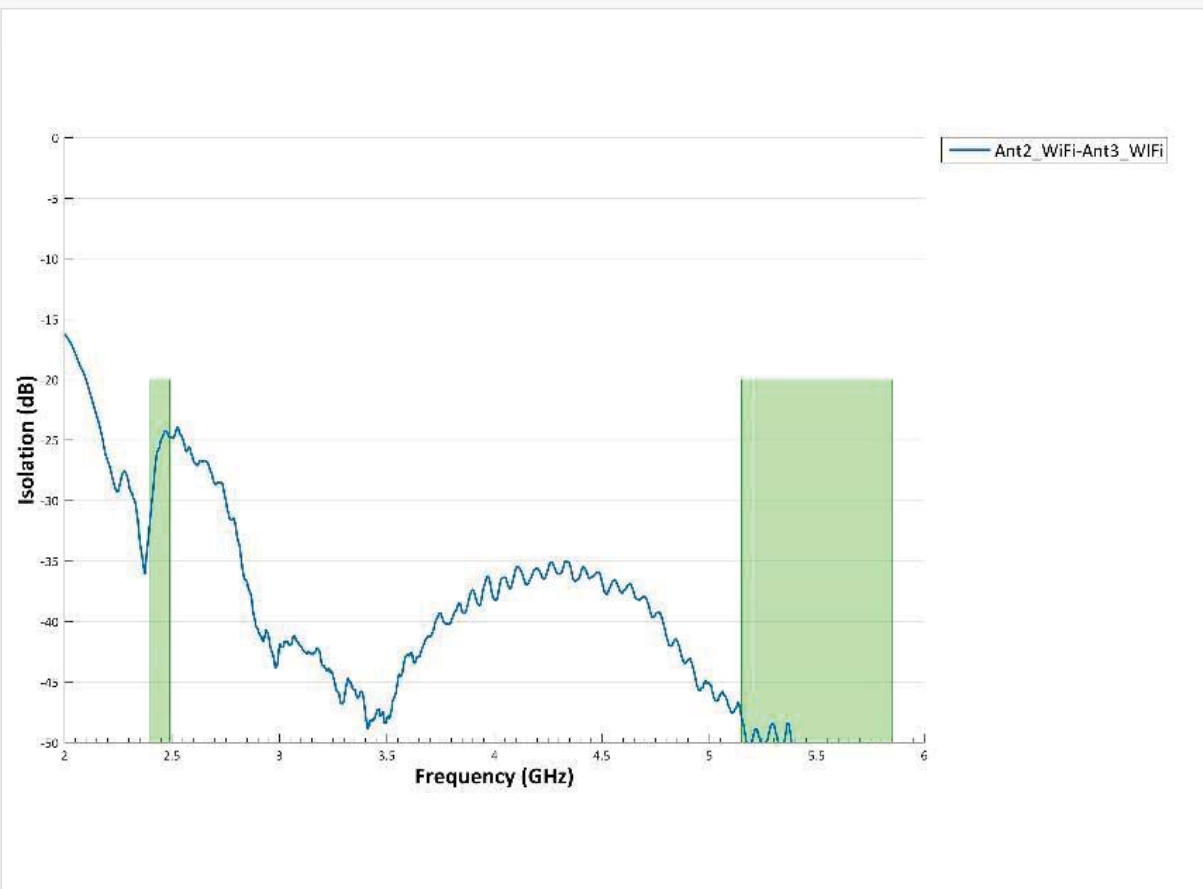
AFTER MATCHING CHANGE: S-Parameter – Return Loss for Wi-Fi Antennas



KEY OBSERVATIONS

Antenna	Return Loss (dB)			
	2.4 GHz	2.49 GHz	5.15 GHz	5.85 GHz
Ant2_DB	-11.2	-19.5	-16.0	-11.5
Ant3_DB	-20.9	-21.7	-13.4	-38.7

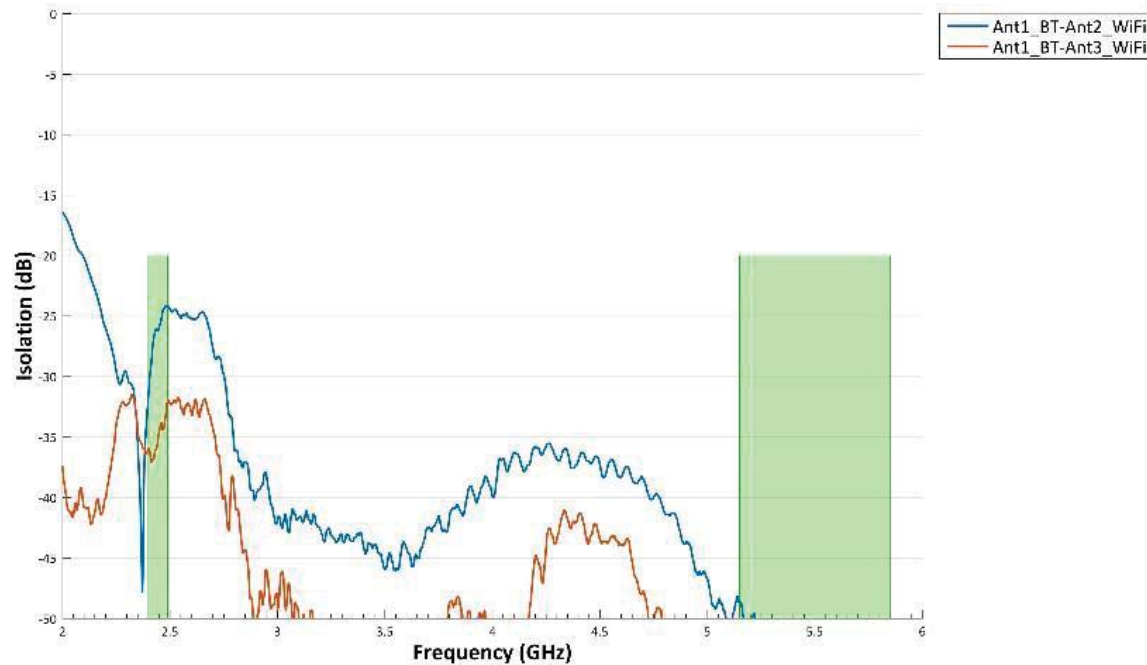
S-Parameter – Isolation for Wi-Fi Antennas



KEY OBSERVATIONS

Antenna	Minimum Isolation (dB)	
	2.4GHz band	5GHz Band
Ant2_DB-Ant3_DB	-23.5	-45.4

S-Parameter – Isolation between BT and Wi-Fi Antennas



KEY OBSERVATIONS

Antenna	Minimum Isolation (dB)	
	2.4GHz band	5GHz Band
Ant1_BT-Ant2_DB	-24.2	-48.1
Ant1_BT-Ant3_DB	-31.9	-50.9

Efficiency and Peak Gain

Antenna Efficiency (%) and Peak Gain(dBi) – 2.4 GHz



Frequency (MHz)	Ant1_BT (%)	Ant2_DB (%)	Ant3_DB (%)
2400	60	61	74
2410	61	65	78
2420	60	61	71
2430	63	68	78
2440	65	71	80
2450	60	64	71
2460	66	74	79
2470	67	76	80
2480	63	72	75
2490	66	77	79
Average	63	69	77

Frequency (MHz)	Ant1_BT (dBi)	Ant2_DB (dBi)	Ant3_dBi (dBi)
2400	2	1.2	2.3
2410	2.2	1.5	2.5
2420	2	1.2	2
2430	2.4	1.9	2.4
2440	2.5	2.1	2.5
2450	2	1.7	2.1
2460	2.5	2.4	2.7
2470	2.6	2.5	3
2480	2.4	2.3	2.8
2490	2.6	2.5	3.1

Antenna Efficiency (%) and Peak Gain(dBi) – 5 GHz Band of Operation

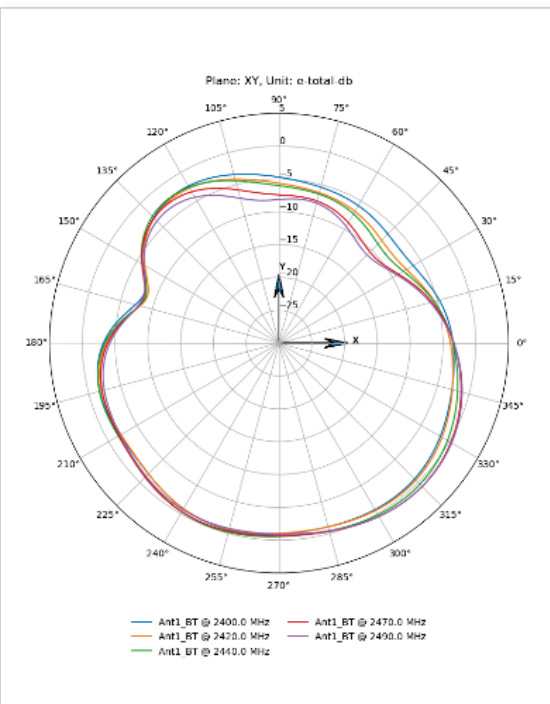


Frequency (MHz)	Ant2_DB (%)	Ant3_DB (%)
5150	66	59
5250	69	60
5350	72	65
5550	68	61
5650	68	63
5750	67	65
5850	66	68
Average	68	63

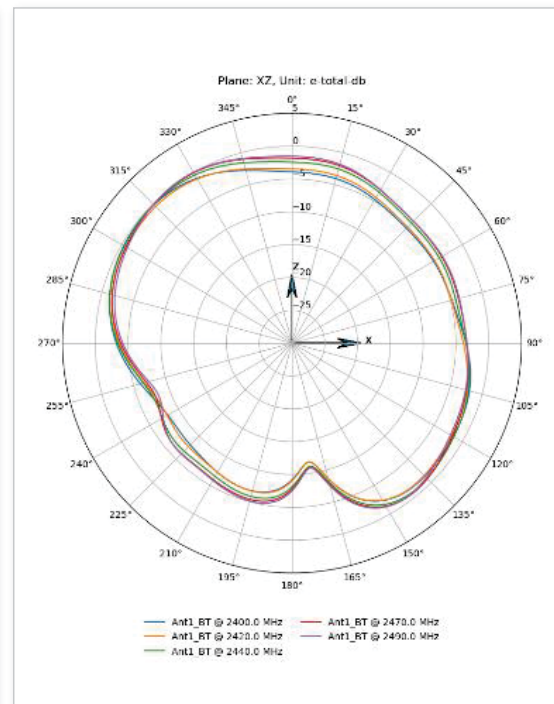
Frequency (MHz)	Ant2_DB (dBi)	Ant3_dBi (dBi)
5150	2.2	1.4
5250	2.7	1.7
5350	4	2
5550	3	1.6
5650	2.9	1.8
5750	2.9	2
5850	2.8	2

Radiation Patterns

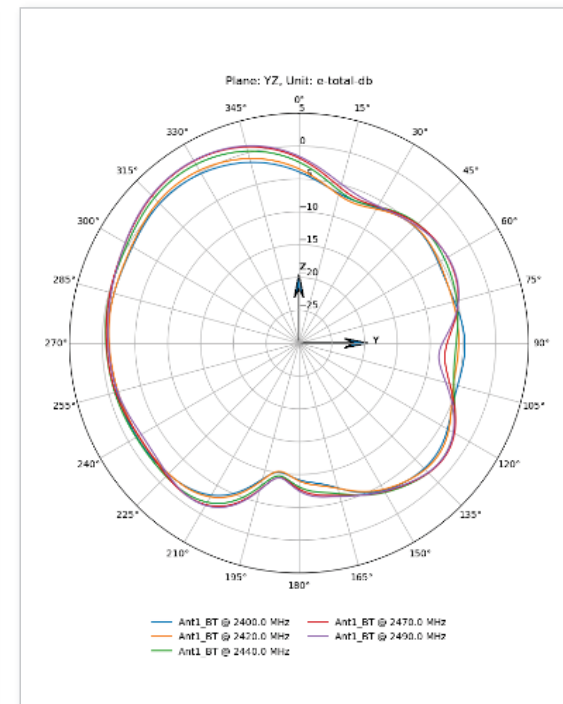
2D Patterns: Ant1 BT at 2.4 GHz Band



Azimuth

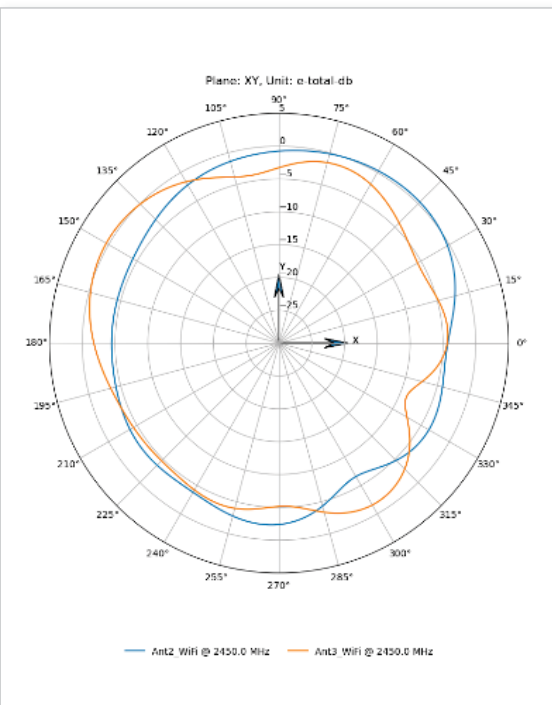


Side to Side Elevation

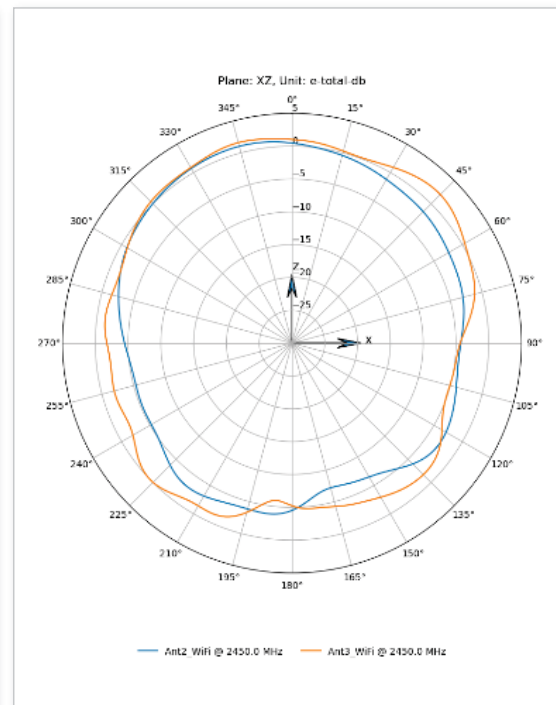


Front to Back Elevation

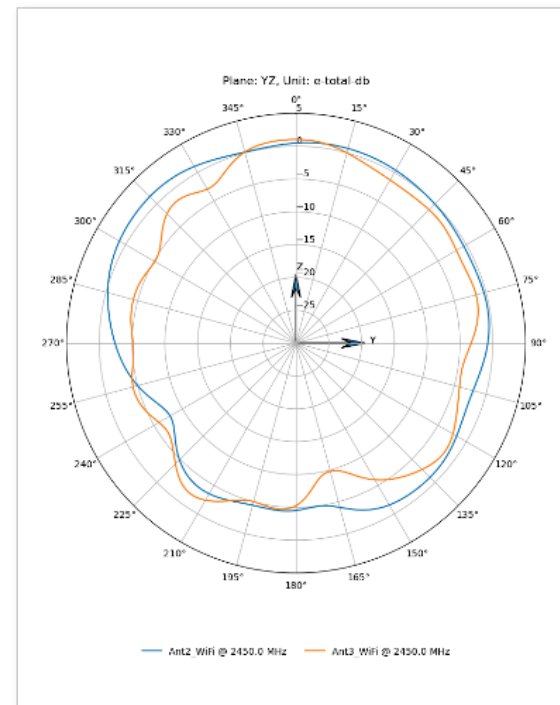
System Coverage: Wi-Fi at 2.4 GHz Band of operation



Azimuth

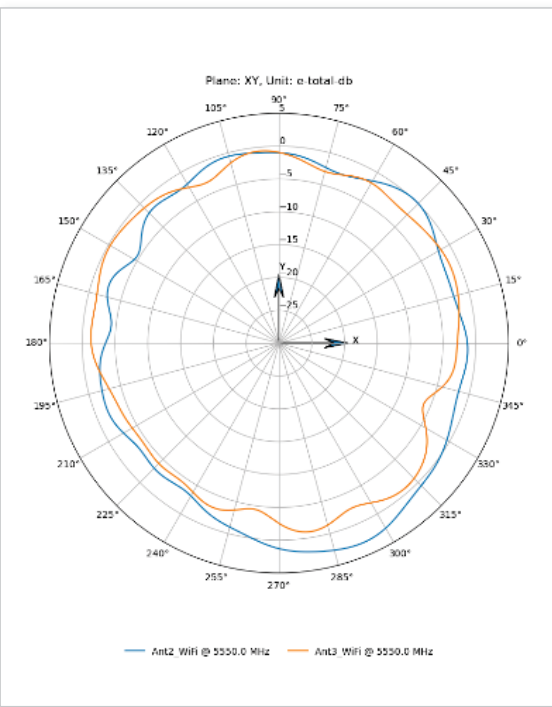


Side to Side Elevation

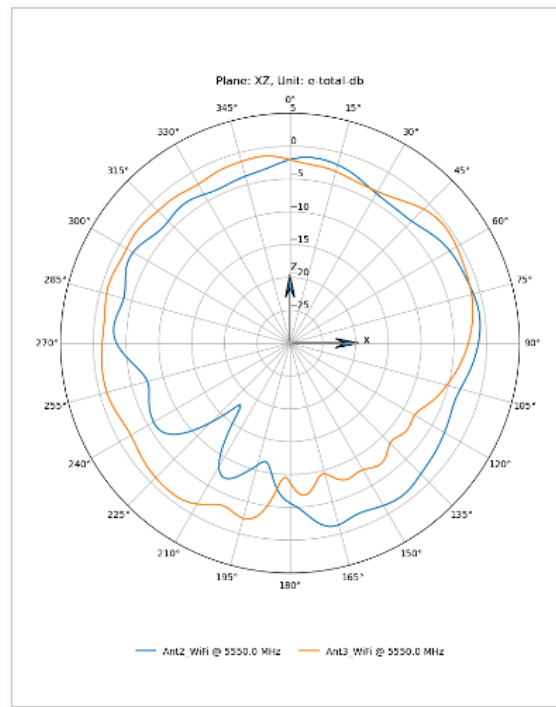


Front to Back Elevation

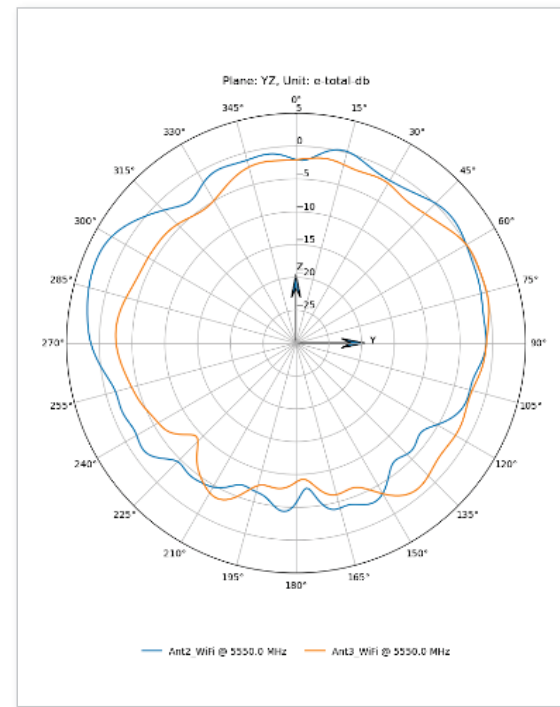
System Coverage: Wi-Fi at 5.5 GHz Band of operation



Azimuth

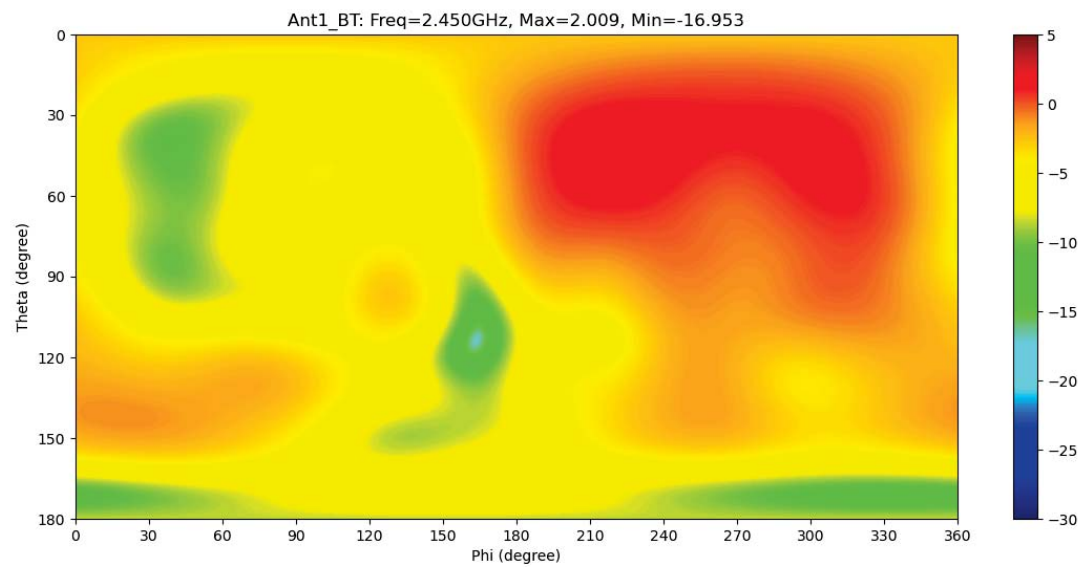


Side to Side Elevation

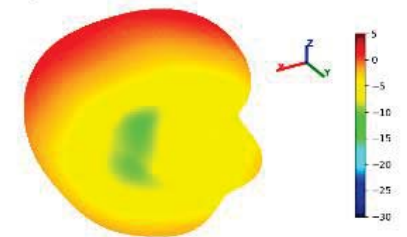


Front to Back Elevation

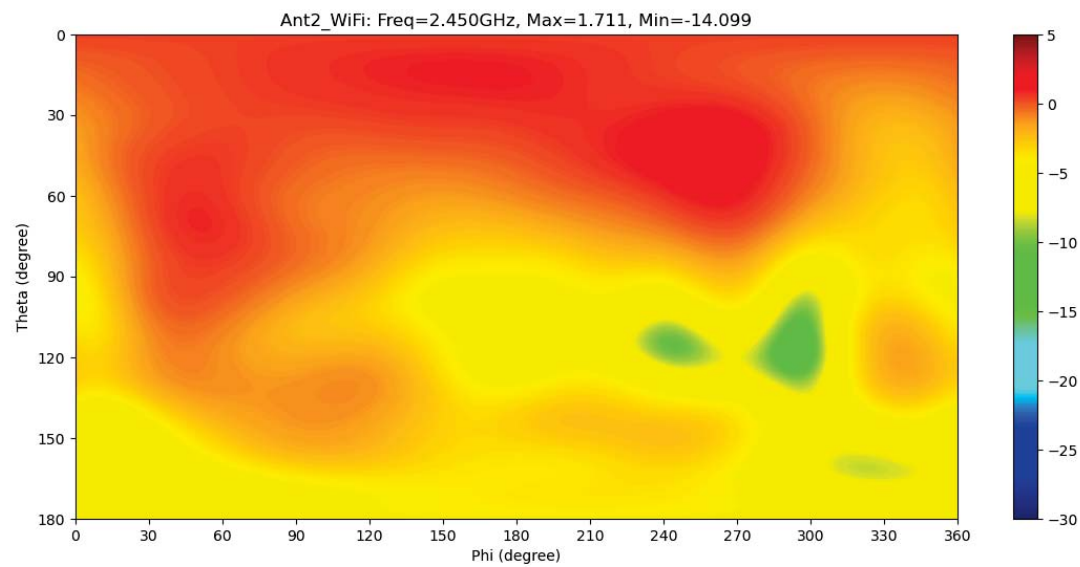
3D Pattern – Ant1_BT at 2.45 GHz



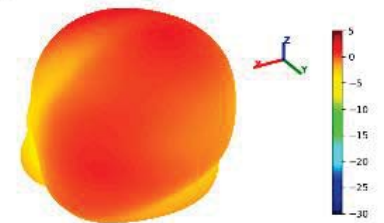
Ant1_BT: Freq=2450MHz, Max=2.01, Min=-16.95



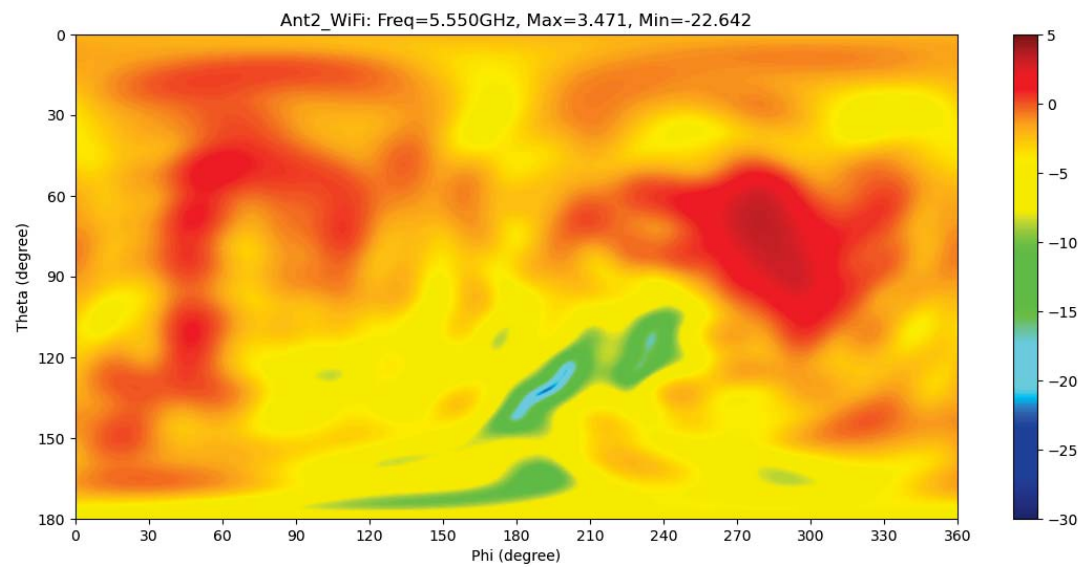
3D Pattern – Ant2_WiFi at 2.45GHz



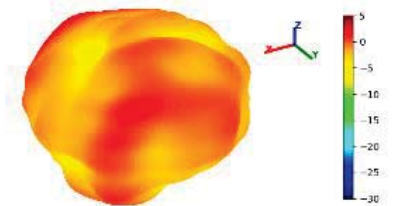
Ant2_WiFi: Freq=2450MHz, Max=1.71, Min=-14.10



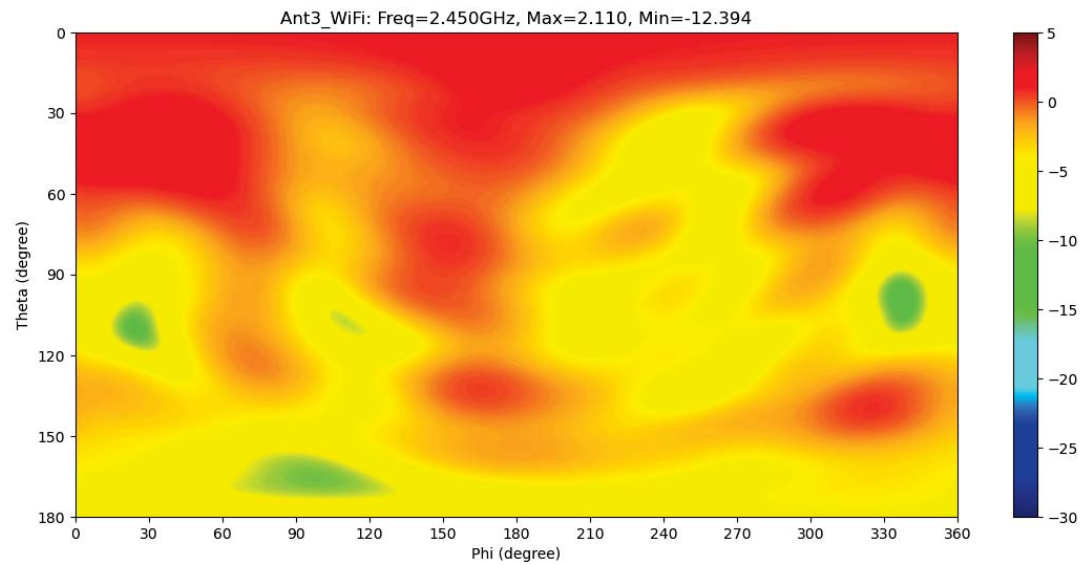
3D Pattern – Ant2_WiFi at 5.55 GHz



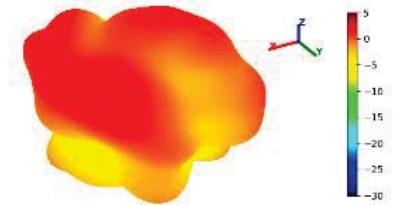
Ant2_WiFi: Freq=5550MHz, Max=3.47, Min=-22.64



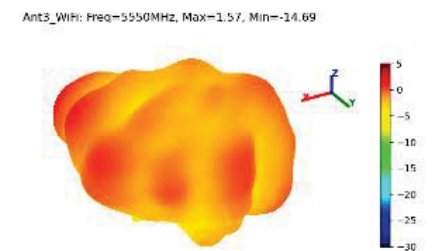
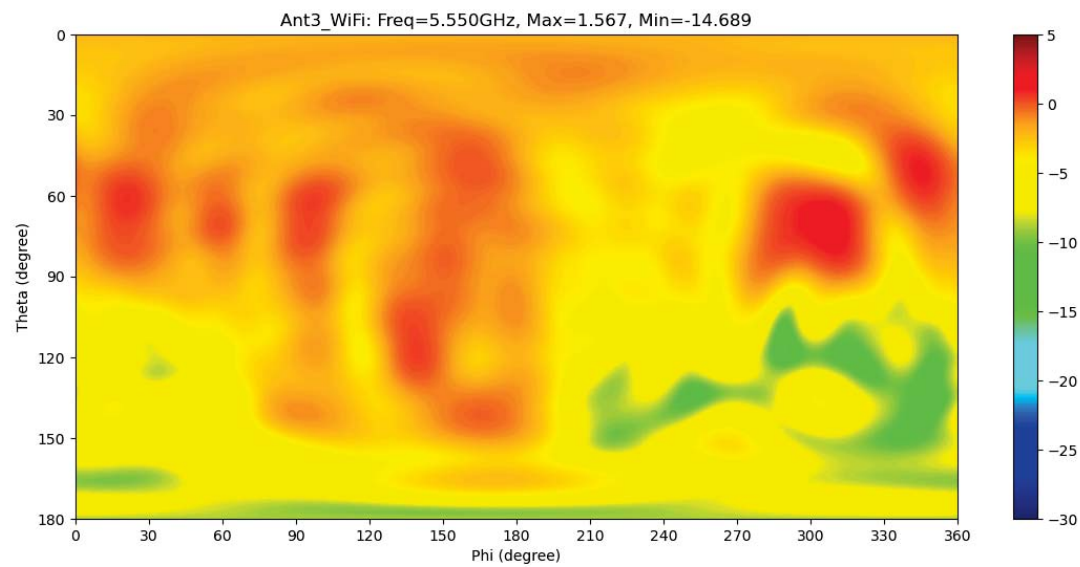
3D Pattern – Ant3_WiFi at 2.45 GHz



Ant3_WiFi: Freq=2450MHz, Max=2.11, Min=-12.39



3D Pattern – Ant3_WiFi at 5.55 GHz



Conclusion



- Return loss is better than -10dB specs for all bands
- Isolation between the WiFi band is -20dB or better
- Isolation between BT and WiFi is -20dB or better
- Antenna Efficiency is 60% or better on all Wi-Fi antennas