

# RF Exposure Lab

802 N. Twin Oaks Valley Road, Suite 105 • San Marcos, CA 92069 • U.S.A.

TEL (760) 471-2100 • FAX (760) 471-2121

<http://www.rfexposurelab.com>

## CERTIFICATE OF COMPLIANCE SAR EVALUATION

Roku, Inc.  
1155 Coleman Ave.  
San Jose, CA 95110

Dates of Test:  
Test Report Number:

May 9-12, 2022  
SAR.20220501  
Revision C

FCC ID:	TC2-R1047
IC Certificate:	5959A-R1043
Model(s):	RC-GZ1, RC-GZ5
Test Sample:	Engineering Unit Same as Production
Serial Number:	Eng 1
Equipment Type:	WiFi Remote Control
Classification:	Portable Transmitter Next to Body and Extremity
TX Frequency Range:	2412 – 2462 MHz, 5150 – 5350 MHz, 5500 – 5700 MHz; 5745 – 5825 MHz
Frequency Tolerance:	± 2.5 ppm
Maximum RF Output:	2450 MHz (b) – 12.1 dB, 2450 MHz (g) – 21.4 dB, 2450 MHz (n) – 21.3 dB, 5250 MHz (a) – 16.3 dB, 5250 MHz (n) – 16.3 dB, 5250 MHz (ac) – 16.3 dB, 5600 MHz (a) – 13.4 dB, 5600 MHz (n) – 13.3 dB, 5600 MHz (ac) – 13.3 dB, 5800 MHz (a) – 17.2 dB, 5800 MHz (n) – 17.1 dB, 5800 MHz (ac) – 17.1 dB Conducted
Signal Modulation:	DSSS, OFDM
Antenna Type:	Internal
Application Type:	Certification
FCC Rule Parts:	Part 2, 15C, 15E
KDB Test Methodology:	KDB 447498 D01 v07, KDB 248227 v02r02,
Industry Canada:	RSS-102 Issue 5, Safety Code 6
Max. Stand Alone SAR Value:	1.10 W/kg Reported
Separation Distance:	0 mm

This wireless mobile and/or portable device has been shown to be compliant for localized specific absorption rate (SAR) for uncontrolled environment/general exposure limits specified in ANSI/IEEE Std. C95.1-1992 and had been tested in accordance with the measurement procedures specified in IEEE 1528-2013 and IEC 62209-1528:2020 (See test report).

I attest to the accuracy of the data. All measurements were performed by myself or were made under my supervision and are correct to the best of my knowledge and belief. I assume full responsibility for the completeness of these measurements and vouch for the qualifications of all persons taking them.

RF Exposure Lab, LLC certifies that no party to this application is subject to a denial of Federal benefits that includes FCC benefits pursuant to Section 5301 of the Anti-Drug Abuse Act of 1988, 21 U.S.C. 853(a).



Jay M. Moulton  
Vice President



Testing Cert. # 2387.01

## Table of Contents

1.	Introduction .....	4
	SAR Definition [5].....	5
2.	SAR Measurement Setup .....	6
	Robotic System .....	6
	System Hardware.....	6
	System Electronics.....	7
	Probe Measurement System .....	7
3.	Probe and Dipole Calibration.....	14
4.	Phantom & Simulating Tissue Specifications.....	15
	Head & Body Simulating Mixture Characterization .....	15
5.	ANSI/IEEE C95.1 – 1992 RF Exposure Limits [2].....	16
	Uncontrolled Environment .....	16
	Controlled Environment.....	16
6.	Measurement Uncertainty.....	17
7.	System Validation.....	18
	Tissue Verification.....	18
	Test System Verification.....	18
8.	SAR Test Data Summary .....	19
	Procedures Used To Establish Test Signal .....	19
	Device Test Condition .....	19
	SAR Data Summary – 2450 MHz Body 802.11b .....	28
	SAR Data Summary – 5250 MHz Body 802.11a .....	29
	SAR Data Summary – 5600 MHz Body 802.11a .....	30
	SAR Data Summary – 5800 MHz Body 802.11a .....	31
9.	Test Equipment List.....	32
10.	Conclusion.....	33
11.	References.....	34
	Appendix A – System Validation Plots and Data .....	35
	Appendix B – SAR Test Data Plots .....	45
	Appendix C – SAR Test Setup Photos .....	50
	Appendix D – Probe Calibration Data Sheets.....	56
	Appendix E – Dipole Calibration Data Sheets .....	67
	Appendix F – Phantom Calibration Data Sheets.....	82
	Appendix G – Validation Summary.....	84

Comment/Revision	Date
Original Release	May 20, 2022
Revision A – Correct model number and add family member	May 24, 2022
Revision B – Change & to comma in model numbers	May 26, 2022
Revision C – Correct the label on top position test setup photos and correct the power for channel 140 in n/ac mode	June 20, 2022

**Note: The latest version supersedes all previous versions listed in the above table. The latest version shall be used.**

## 1. Introduction

This measurement report shows compliance of the Roku, Inc. Model RC-GZ1, RC-GZ5 FCC ID: TC2-R1047 with FCC Part 2, 1093, ET Docket 93-62 Rules for mobile and portable devices and IC Certificate: 5959A-R1043 with RSS102 Issue 5 & Safety Code 6. The FCC/ISED have adopted the guidelines for evaluating the environmental effects of radio frequency radiation to protect the public and workers from the potential hazards of RF emissions due to FCC/ISED regulated portable devices. [1], [6]

The test results recorded herein are based on a single type test of Roku, Inc. Model RC-GZ1 and therefore apply only to the tested sample.

The test procedures and limits, as described in ANSI C95.1 – 1999 Standard for Safety Levels with Respect to Human Exposure to Radio Frequency Electromagnetic Fields, 3 kHz to 300 GHz [2], ANSI C95.3 – 2002 Recommended Practice for the Measurement of Potentially Hazardous Electromagnetic Fields [3], IEEE Std.1528 – 2013 Recommended Practice [4], and Industry Canada Safety Code 6 Limits of Human Exposure to Radiofrequency Electromagnetic Fields in the Frequency Range from 3kHz to 300 GHz were employed.

The following table indicates all the wireless technologies operating in the RC-GZ1, RC-GZ5 WiFi Remote Control. The table also shows the tolerance for the power level for each mode.

Band	Technology	3GPP Nominal Power dBm	Calibrated Nominal Power dBm	Tolerance dBm	Lower Tolerance dBm	Upper Tolerance dBm
WLAN – 2.4 GHz	802.11b	N/A	N/A	N/A	N/A	12.1
WLAN – 2.4 GHz	802.11g	N/A	N/A	N/A	N/A	21.4
WLAN – 2.4 GHz	802.11n	N/A	N/A	N/A	N/A	21.3
WLAN – 5.0 GHz UNII 1 & 2A	802.11a	N/A	N/A	N/A	N/A	16.3
WLAN – 5.0 GHz UNII 1 & 2A	802.11n	N/A	N/A	N/A	N/A	16.3
WLAN – 5.0 GHz UNII 1 & 2A	802.11ac	N/A	N/A	N/A	N/A	16.3
WLAN – 5.0 GHz UNII 2C	802.11a	N/A	N/A	N/A	N/A	13.4
WLAN – 5.0 GHz UNII 2C	802.11n	N/A	N/A	N/A	N/A	13.3
WLAN – 5.0 GHz UNII 2C	802.11ac	N/A	N/A	N/A	N/A	13.3
WLAN – 5.0 GHz UNII 3	802.11a	N/A	N/A	N/A	N/A	17.2
WLAN – 5.0 GHz UNII 3	802.11n	N/A	N/A	N/A	N/A	17.1
WLAN – 5.0 GHz UNII 3	802.11ac	N/A	N/A	N/A	N/A	17.1

**SAR Definition [5]**

Specific Absorption Rate is defined as the time derivative (rate) of the incremental energy ( $dW$ ) absorbed by (dissipated in) an incremental mass ( $dm$ ) contained in a volume element ( $dV$ ) of a given density ( $\rho$ ).

$$SAR = \frac{d}{dt} \left( \frac{dW}{dm} \right) = \frac{d}{dt} \left( \frac{dW}{\rho dV} \right)$$

SAR is expressed in units of watts per kilogram (W/kg). SAR can be related to the electric field at a point by

$$SAR = \frac{\sigma |E|^2}{\rho}$$

where:

$\sigma$  = conductivity of the tissue (S/m)

$\rho$  = mass density of the tissue (kg/m<sup>3</sup>)

$E$  = rms electric field strength (V/m)

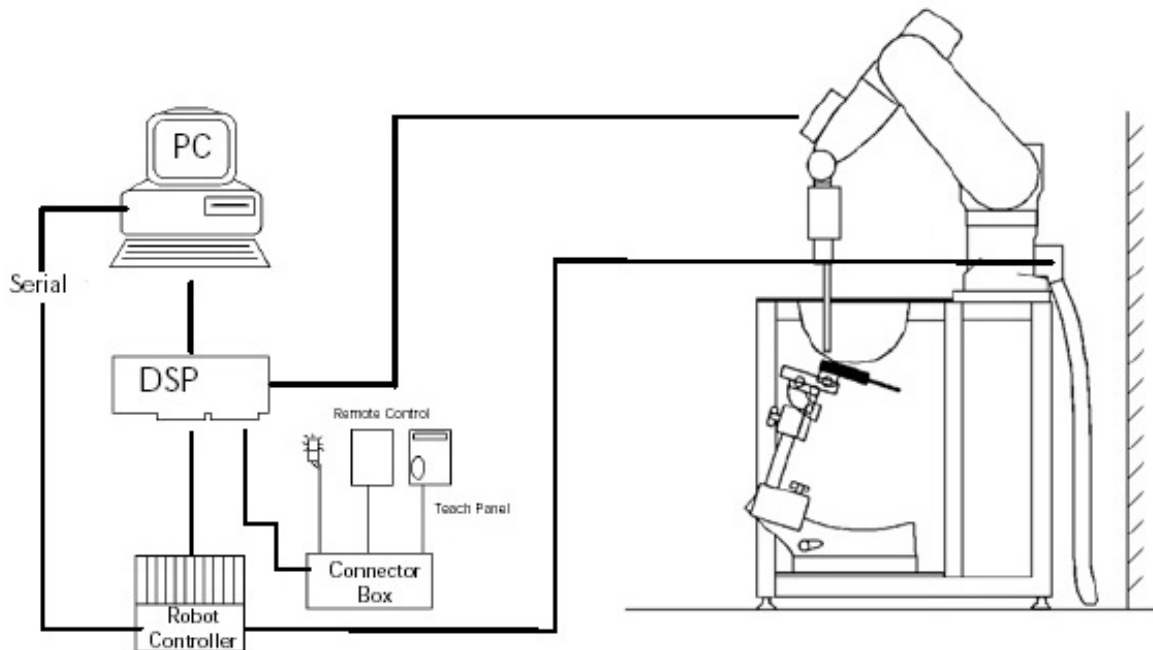
## 2. SAR Measurement Setup

### Robotic System

These measurements are performed using the DASY52 automated dosimetric assessment system. The DASY52 is made by Schmid & Partner Engineering AG (SPEAG) in Zurich, Switzerland and consists of high precision robotics system (Staubli), robot controller, Intel Core2 computer, near-field probe, probe alignment sensor, and the generic twin phantom containing the brain equivalent material. The robot is a six-axis industrial robot performing precise movements to position the probe to the location (points) of maximum electromagnetic field (EMF) (see Fig. 2.1).

### System Hardware

A cell controller system contains the power supply, robot controller teach pendant (Joystick), and a remote control used to drive the robot motors. The PC consists of the HP Intel Core2 computer with Windows XP system and SAR Measurement Software DASY52, A/D interface card, monitor, mouse, and keyboard. The Staubli Robot is connected to the cell controller to allow software manipulation of the robot. A data acquisition electronic (DAE) circuit that performs the signal amplification, signal multiplexing, AD-conversion, offset measurements, mechanical surface detection, collision detection, etc. is connected to the Electro-optical coupler (EOC). The EOC performs the conversion from the optical into digital electric signal of the DAE and transfers data to the PC plug-in card.



**Figure 2.1 SAR Measurement System Setup**

## System Electronics

The DAE4 consists of a highly sensitive electrometer-grade preamplifier with auto-zeroing, a channel and gain-switching multiplexer, a fast 16 bit AD-converter and a command decoder and control logic unit. Transmission to the PC-card is accomplished through an optical downlink for data and status information and an optical uplink for commands and clock lines. The mechanical probe mounting device includes two different sensor systems for frontal and sidewise probe contacts. They are also used for mechanical surface detection and probe collision detection. The robot uses its own controller with a built in VME-bus computer. The system is described in detail in.

## Probe Measurement System

The SAR measurements were conducted with the dosimetric probe EX3DV4, designed in the classical triangular configuration (see Fig. 2.2) and optimized for dosimetric evaluation. The probe is constructed using the thick film technique; with printed resistive lines on ceramic substrates. The probe is equipped with an optical multi fiber line ending at the front of the probe tip. (see Fig. 2.3) It is connected to the EOC box on the robot arm and provides an automatic detection of the phantom surface. Half of the fibers are connected to a pulsed infrared transmitter, the other half to a synchronized receiver. As the probe approaches the surface, the reflection from the surface produces a coupling from the transmitting to the receiving fibers. This reflection increases first during the approach, reaches maximum and then decreases. If the probe is flatly touching the surface, the coupling is zero. The distance of the coupling maximum to the surface is independent of the surface reflectivity and largely independent of the surface to probe angle. The DASY52 software reads the reflection during a software approach and looks for the maximum using a 2nd order fitting. The approach is stopped at reaching the maximum.



**DAE System**

**Probe Specifications**

**Calibration:** In air from 10 MHz to 6.0 GHz  
In brain and muscle simulating tissue at Frequencies of 450 MHz, 835 MHz, 1750 MHz, 1900 MHz, 2450 MHz, 2600 MHz, 3500 MHz, 5200 MHz, 5300 MHz, 5600 MHz, 5800 MHz

**Frequency:** 10 MHz to 6 GHz

**Linearity:**  $\pm 0.2$ dB (30 MHz to 6 GHz)

**Dynamic:** 10 mW/kg to 100 W/kg

**Range:** Linearity:  $\pm 0.2$ dB

**Dimensions:** Overall length: 330 mm

**Tip length:** 20 mm

**Body diameter:** 12 mm

**Tip diameter:** 2.5 mm

**Distance from probe tip to sensor center:** 1 mm

**Application:** SAR Dosimetry Testing  
Compliance tests of wireless device

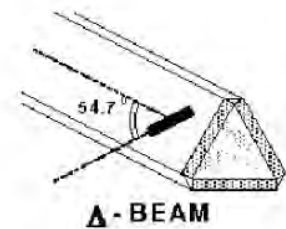


Figure 2.2 Triangular Probe Configurations



Figure 2.3 Probe Thick-Film Technique



**Probe Calibration Process**

**Dosimetric Assessment Procedure**

Each probe is calibrated according to a dosimetric assessment procedure described in with accuracy better than +/- 10%. The spherical isotropy was evaluated with the procedure described in and found to be better than +/-0.25dB. The sensitivity parameters (Norm X, Norm Y, Norm Z), the diode compression parameter (DCP) and the conversion factor (Conv F) of the probe is tested.

**Free Space Assessment**

The free space E-field from amplified probe outputs is determined in a test chamber. This is performed in a TEM cell for frequencies below 1 GHz, and in a waveguide above 1GHz for free space. For the free space calibration, the probe is placed in the volumetric center of the cavity at the proper orientation with the field. The probe is then rotated 360 degrees until the three channels show the maximum reading. The power density readings equates to 1 mW/cm<sup>2</sup>.

**Temperature Assessment \***

E-field temperature correlation calibration is performed in a flat phantom filled with the appropriate simulated brain tissue. The measured free space E-field in the medium, correlates to temperature rise in a dielectric medium. For temperature correlation calibration a RF transparent thermistor based temperature probe is used in conjunction with the E-field probe

$$SAR = C \frac{\Delta T}{\Delta t}$$

$$SAR = \frac{|E|^2 \cdot \sigma}{\rho}$$

where:

where:

$\Delta t$  = exposure time (30 seconds),

$\sigma$  = simulated tissue conductivity,

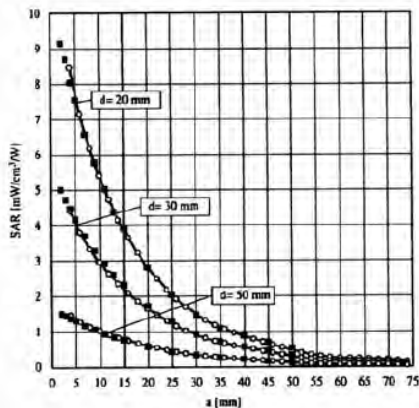
C = heat capacity of tissue (brain or muscle),

$\rho$  = Tissue density (1.25 g/cm<sup>3</sup> for brain tissue)

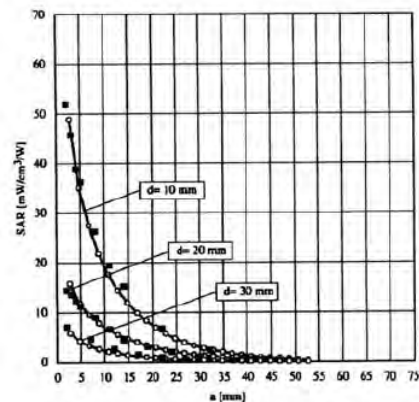
$\Delta T$  = temperature increase due to RF exposure.

SAR is proportional to  $\Delta T / \Delta t$ , the initial rate of tissue heating, before thermal diffusion takes place.

Now it's possible to quantify the electric field in the simulated tissue by equating the thermally derived SAR to the E- field;



**Figure 2.4 E-Field and Temperature Measurements at 900MHz**



**Figure 2.5 E-Field and Temperature Measurements at 1800MHz**

## Data Extrapolation

The DASY52 software automatically executes the following procedures to calculate the field units from the microvolt readings at the probe connector. The first step of the evaluation is a linearization of the filtered input signal to account for the compression characteristics of the detector diode. The compensation depends on the input signal, the diode type and the DC-transmission factor from the diode to the evaluation electronics. If the exciting field is pulsed, the crest factor of the signal must be known to correctly compensate for peak power. The formula for each channel can be given like below;

$$V_i = U_i + U_i^2 \cdot \frac{cf}{dcp_i}$$

with

- $V_i$  = compensated signal of channel i (i=x,y,z)
- $U_i$  = input signal of channel i (i=x,y,z)
- cf = crest factor of exciting field (DASY parameter)
- dcp<sub>i</sub> = diode compression point (DASY parameter)

From the compensated input signals the primary field data for each channel can be evaluated:

E-field probes:

$$E_i = \sqrt{\frac{V_i}{Norm_i \cdot ConvF}}$$

with

- $V_i$  = compensated signal of channel i (i = x,y,z)
- Norm<sub>i</sub> = sensor sensitivity of channel i (i = x,y,z)  
μV/(V/m)<sup>2</sup> for E-field probes
- ConvF = sensitivity of enhancement in solution
- $E_i$  = electric field strength of channel i in V/m

The RSS value of the field components gives the total field strength (Hermetian magnitude):

$$E_{tot} = \sqrt{E_x^2 + E_y^2 + E_z^2}$$

The primary field data are used to calculate the derived field units.

$$SAR = E_{tot}^2 \cdot \frac{\sigma}{\rho \cdot 1000}$$

with

- SAR = local specific absorption rate in W/g
- $E_{tot}$  = total field strength in V/m
- σ = conductivity in [mho/m] or [Siemens/m]
- ρ = equivalent tissue density in g/cm<sup>3</sup>

The power flow density is calculated assuming the excitation field to be a free space field.

$$P_{free} = \frac{E_{tot}^2}{3770}$$

with

- $P_{free}$  = equivalent power density of a plane wave in W/cm<sup>2</sup>
- $E_{tot}$  = total electric field strength in V/m

## Scanning procedure

- The DASY installation includes predefined files with recommended procedures for measurements and system check. They are read-only document files and destined as fully defined but unmeasured masks. All test positions (head or body-worn) are tested with the same configuration of test steps differing only in the grid definition for the different test positions.
- The „reference“ and „drift“ measurements are located at the beginning and end of the batch process. They measure the field drift at one single point in the liquid over the complete procedure. The indicated drift is mainly the variation of the DUT’s output power and should vary max. +/- 5 %.
- The highest integrated SAR value is the main concern in compliance test applications. These values can mostly be found at the inner surface of the phantom and cannot be measured directly due to the sensor offset in the probe. To extrapolate the surface values, the measurement distances to the surface must be known accurately. A distance error of 0.5mm could produce SAR errors of 6% at 1800 MHz. Using predefined locations for measurements is not accurate enough. Any shift of the phantom (e.g., slight deformations after filling it with liquid) would produce high uncertainties. For an automatic and accurate detection of the phantom surface, the DASY5 system uses the mechanical surface detection. The detection is always at touch, but the probe will move backward from the surface the indicated distance before starting the measurement.
- The „area scan“ measures the SAR above the DUT or verification dipole on a parallel plane to the surface. It is used to locate the approximate location of the peak SAR with 2D spline interpolation. The robot performs a stepped movement along one grid axis while the local electrical field strength is measured by the probe. The probe is touching the surface of the SAM during acquisition of measurement values. The scan uses different grid spacings for different frequency measurements. Standard grid spacing for head measurements in frequency ranges  $\leq 2$ GHz is 15 mm in x - and y-dimension. For higher frequencies a finer resolution is needed, thus for the grid spacing is reduced according the following table:

Area scan grid spacing for different frequency ranges	
Frequency range	Grid spacing
$\leq 2$ GHz	$\leq 15$ mm
2 – 4 GHz	$\leq 12$ mm
4 – 6 GHz	$\leq 10$ mm

Grid spacing and orientation have no influence on the SAR result. For special applications where the standard scan method does not find the peak SAR within the grid, e.g. mobile phones with flip cover, the grid can be adapted in orientation. Results of this coarse scan are shown in annex B.

- A „zoom scan“ measures the field in a volume around the 2D peak SAR value acquired in the previous „coarse“ scan. It uses a fine meshed grid where the robot moves the probe in steps along all the 3 axis (x,y and z-axis) starting at the bottom of the Phantom. The grid spacing for the cube measurement is varied according to the measured frequency range, the dimensions are given in the following table:

Zoom scan grid spacing and volume for different frequency ranges			
Frequency range	Grid spacing for x, y axis	Grid spacing for z axis	Minimum zoom scan volume
$\leq 2$ GHz	$\leq 8$ mm	$\leq 5$ mm	$\geq 30$ mm
2 – 3 GHz	$\leq 5$ mm	$\leq 5$ mm	$\geq 28$ mm
3 – 4 GHz	$\leq 5$ mm	$\leq 4$ mm	$\geq 28$ mm
4 – 5 GHz	$\leq 4$ mm	$\leq 3$ mm	$\geq 25$ mm
5 – 6 GHz	$\leq 4$ mm	$\leq 2$ mm	$\geq 22$ mm

DASY is also able to perform repeated zoom scans if more than 1 peak is found during area scan. In this document, the evaluated peak 1g and 10g averaged SAR values are shown in the 2D-graphics in annex B. Test

results relevant for the specified standard (see section 3) are shown in table form in section 7.

## Spatial Peak SAR Evaluation

The spatial peak SAR - value for 1 and 10 g is evaluated after the Cube measurements have been done. The basis of the evaluation are the SAR values measured at the points of the fine cube grid consisting of all points in the three directions x, y and z. The algorithm that finds the maximal averaged volume is separated into three different stages.

- The data between the dipole center of the probe and the surface of the phantom are extrapolated. This data cannot be measured since the center of the dipole is 1 to 2.7 mm away from the tip of the probe and the distance between the surface and the lowest measuring point is about 1 mm (see probe calibration sheet). The extrapolated data from a cube measurement can be visualized by selecting 'Graph Evaluated'.
- The maximum interpolated value is searched with a straight-forward algorithm. Around this maximum the SAR - values averaged over the spatial volumes (1g or 10 g) are computed using the 3d-spline interpolation algorithm. If the volume cannot be evaluated (i.e., if a part of the grid was cut off by the boundary of the measurement area) the evaluation will be started on the corners of the bottom plane of the cube.
- All neighbouring volumes are evaluated until no neighbouring volume with a higher average value is found.

## Extrapolation

The extrapolation is based on a least square algorithm [W. Gander, Computermathematik, p.168-180]. Through the points in the first 3 cm along the z-axis, polynomials of order four are calculated. These polynomials are then used to evaluate the points between the surface and the probe tip. The points, calculated from the surface, have a distance of 1 mm from each other.

## Interpolation

The interpolation of the points is done with a 3d-Spline. The 3d-Spline is composed of three one-dimensional splines with the "Not a knot"-condition [W. Gander, Computermathematik, p.141-150] (x, y and z -direction) [Numerical Recipes in C, Second Edition, p.123ff].

## Volume Averaging

At First the size of the cube is calculated. Then the volume is integrated with the trapezoidal algorithm. 8000 points (20x20x20) are interpolated to calculate the average.

## Advanced Extrapolation

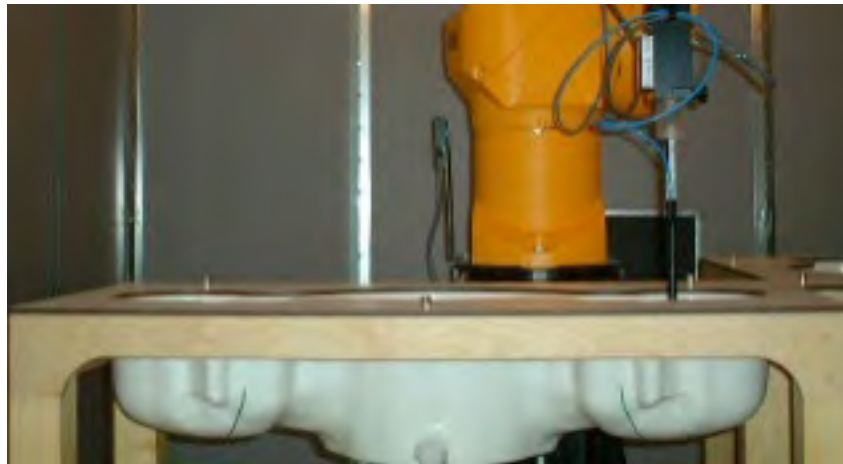
DASY uses the advanced extrapolation option which is able to compensate boundary effects on E-field probes.

## **SAM PHANTOM**

The SAM Twin Phantom V4.0 is constructed of a fiberglass shell integrated in a wooden table. The shape of the shell is based on data from an anatomical study designed to determine the maximum exposure in at least 90% of all users. It enables the dosimetric evaluation of left and right hand phone usage as well as body mounted usage at the flat phantom region. A cover prevents the evaporation of the liquid. Reference markings on the Phantom allow the complete setup of all predefined phantom positions and measurement grids by manually teaching three points in the robot. (see Fig. 2.6)

### **Phantom Specification**

**Phantom:** SAM Twin Phantom (V4.0)  
**Shell Material:** Vivac Composite  
**Thickness:**  $2.0 \pm 0.2$  mm



**Figure 2.6 SAM Twin Phantom**

### **Device Holder for Transmitters**

In combination with the SAM Twin Phantom V4.0 the Mounting Device (see Fig. 2.7), enables the rotation of the mounted transmitter in spherical coordinates whereby the rotation point is the ear opening. The devices can be easily, accurately, and repeatedly positioned according to the FCC, CENELEC, IEC and IEEE specifications. The device holder can be locked at different phantom locations (left head, right head, flat phantom).



**Figure 2.7 Mounting Device**

Note: A simulating human hand is not used due to the complex anatomical and geometrical structure of the hand that may produce infinite number of configurations. To produce the worst-case condition (the hand absorbs antenna output power), the hand is omitted during the tests.

### **3. Probe and Dipole Calibration**

**See Appendix D and E.**

## 4. Phantom & Simulating Tissue Specifications

### Head & Body Simulating Mixture Characterization

The head and body mixtures consist of the material based on the table listed below. The mixture is calibrated to obtain proper dielectric constant (permittivity) and conductivity of the desired tissue. Body tissue parameters that have not been specified in IEEE1528 – 2013 are derived from the issue dielectric parameters computed from the 4-Cole-Cole equations.

**Table 4.1 Typical Composition of Ingredients for Tissue**

Ingredients		Simulating Tissue			
		2450 MHz Head	5250 MHz Head	5600 MHz Head	5750 MHz Head
Mixing Percentage					
Water		Proprietary Purchased From Speag			
Sugar					
Salt					
HEC					
Bactericide					
DGBE					
Dielectric Constant	Target	39.20	35.93	35.53	35.36
Conductivity (S/m)	Target	1.80	4.71	5.07	5.22

## 5. ANSI/IEEE C95.1 – 1992 RF Exposure Limits [2]

### Uncontrolled Environment

Uncontrolled Environments are defined as locations where there is the exposure of individuals who have no knowledge or control of their exposure. The general population/uncontrolled exposure limits are applicable to situations in which the general public may be exposed or in which persons who are exposed as a consequence of their employment may not be made fully aware of the potential for exposure or cannot exercise control over their exposure. Members of the general public would come under this category when exposure is not employment-related; for example, in the case of a wireless transmitter that exposes persons in its vicinity.

### Controlled Environment

Controlled Environments are defined as locations where there is exposure that may be incurred by persons who are aware of the potential for exposure, (i.e. as a result of employment or occupation). In general, occupational/controlled exposure limits are applicable to situations in which persons are exposed as a consequence of their employment, who have been made fully aware of the potential for exposure and can exercise control over their exposure. This exposure category is also applicable when the exposure is of a transient nature due to incidental passage through a location where the exposure levels may be higher than the general population/uncontrolled limits, but the exposed person is fully aware of the potential for exposure and can exercise control over his or her exposure by leaving the area or by some other appropriate means.

**Table 5.1 Human Exposure Limits**

	UNCONTROLLED ENVIRONMENT General Population (W/kg) or (mW/g)	CONTROLLED ENVIROMENT Professional Population (W/kg) or (mW/g)
SPATIAL PEAK SAR <sup>1</sup> Head	1.60	8.00
SPATIAL AVERAGE SAR <sup>2</sup> Whole Body	0.08	0.40
SPATIAL PEAK SAR <sup>3</sup> Hands, Feet, Ankles, Wrists	4.00	20.00

<sup>1</sup> The Spatial Peak value of the SAR averaged over any 1 gram of tissue (defined as a tissue volume in the shape of a cube) and over the appropriate averaging time.

<sup>2</sup> The Spatial Average value of the SAR averaged over the whole body.

<sup>3</sup> The Spatial Peak value of the SAR averaged over any 10 grams of tissue (defined as a tissue volume in the shape of a cube) and over the appropriate averaging time.



## 6. Measurement Uncertainty

Measurement uncertainty table is not required per KDB 865664 D01 v01 section 2.8.2 page 12. SAR measurement uncertainty analysis is required in the SAR report only when the highest measured SAR in a frequency band is  $\geq 1.5$  W/kg for 1-g SAR. The equivalent ratio (1.5/1.6) should be applied to extremity and occupational exposure conditions. The highest reported value is less than 1.5 W/kg. Therefore, the measurement uncertainty table is not required.

## 7. System Validation

### Tissue Verification

**Table 7.1 Measured Tissue Parameters**

		2450 MHz Head		5250 MHz Head		5600 MHz Head	
Date(s)		May 11, 2022		May 9, 2022		May 9, 2022	
Liquid Temperature (°C)	20.0	Target	Measured	Target	Measured	Target	Measured
Dielectric Constant: $\epsilon$		39.20	38.64	35.93	35.29	35.53	34.87
Conductivity: $\sigma$		1.80	1.84	4.71	4.79	5.07	5.17
		5750 MHz Head					
Date(s)		May 9, 2022					
Liquid Temperature (°C)	20.0	Target	Measured				
Dielectric Constant: $\epsilon$		35.36	34.70				
Conductivity: $\sigma$		5.22	5.34				

See Appendix A for data printout.

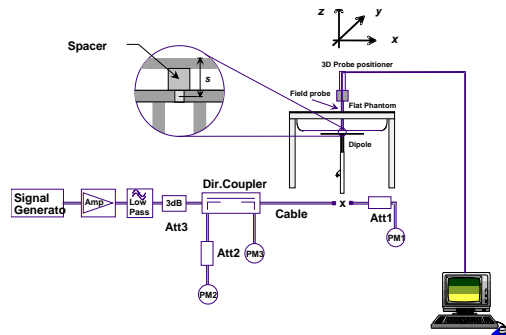
### Test System Verification

Prior to assessment, the system is verified to the  $\pm 10\%$  of the specifications at the test frequency by using the system kit. Power is normalized to 1 watt. (Graphic Plots Attached)

**Table 7.2 System Dipole Validation Target & Measured**

	Test Frequency	Targeted SAR <sub>1g</sub> (W/kg)	Measure SAR <sub>1g</sub> (W/kg)	Tissue Used for Verification	Deviation (%)	Plot Number
11-May-2022	2450 MHz	54.10	54.80	Head	+ 1.29	1
09-May-2022	5250 MHz	79.50	80.70	Head	+ 1.51	2
09-May-2022	5600 MHz	83.20	84.30	Head	+ 1.32	3
09-May-2022	5750 MHz	80.50	81.50	Head	+ 1.24	4

See Appendix A for data plots.



**Figure 7.1 Dipole Validation Test Setup**

## **8. SAR Test Data Summary**

### **See Measurement Result Data Pages**

See Appendix B for SAR Test Data Plots.  
See Appendix C for SAR Test Setup Photos.

### **Procedures Used To Establish Test Signal**

The device was either placed into simulated transmit mode using the manufacturer's test codes or the actual transmission is activated through a base station simulator or similar equipment. See data pages for actual procedure used in measurement.

### **Device Test Condition**

In order to verify that the device was tested at full power, conducted output power measurements were performed before and after each SAR measurement to confirm the output power unless otherwise noted. If a conducted power deviation of more than 5% occurred, the test was repeated. The power drift of each test is measured at the start of the test and again at the end of the test. The drift percentage is calculated by the formula  $((\text{end}/\text{start})-1)*100$  and rounded to three decimal places. The drift percentage is calculated into the resultant SAR value on the data sheet for each test.

The testing was conducted on all edges closest to the antenna. The back, front, right and top sides were tested for the WLAN antenna. The remaining sides were not tested as the side was excluded based on the formula in 47 CFR 1.1307. All further test reductions are shown on pages 22-27 for WLAN. See the photo in Appendix C for a pictorial of the setups and antenna locations.

Band	Mode	Bandwidth (MHz)	Channel	Frequency (MHz)	Data Rate	Avg Power (dBm)	Tune-up Pwr (dBm)
2450 MHz	802.11b	20	1	2412	1 Mbps	10.18	10.2
			6	2437		11.25	11.3
			11	2462		12.09	12.1
	802.11g	20	1	2412	6 Mbps	13.8	13.8
			6	2437		21.4	21.4
			11	2462		9.8	9.8
	802.11n	20	1	2412	HTO	13.18	13.2
			6	2437		21.3	21.3
			11	2462		9.5	9.5
5.15-5.25 GHz	802.11a	20	36	5180	6 Mbps	8.6	8.6
			40	5200		15.15	15.2
			44	5220		15.02	15.1
			48	5240		15.06	15.1
	802.11n	20	36	5180	HTO	6.55	6.6
			40	5200		15.15	15.2
			44	5220		15.01	15.1
			48	5240		15.11	15.2
	802.11ac	20	36	5180	HTO	6.55	6.6
			40	5200		15.15	15.2
			44	5220		15.01	15.1
			48	5240		15.11	15.2
5.25-5.35 GHz	802.11a	20	52	5260	6 Mbps	16.19	16.2
			56	5280		16.2	16.2
			60	5300		16.11	16.2
			64	5320		7.25	8.3
	802.11n	20	52	5260	HTO	16.21	16.3
			56	5280		16.24	16.3
			60	5300		16.18	16.2
			64	5320		7.1	7.1
	802.11ac	20	52	5260	HTO	16.21	16.3
			56	5280		16.24	16.3
			60	5300		16.18	16.2
			64	5320		7.1	7.1

Band	Mode	Bandwidth (MHz)	Channel	Frequency (MHz)	Data Rate	Avg Power (dBm)	Tune-up Pwr (dBm)			
5600 MHz	802.11a	20	100	5500	6 Mbps	4.44	4.5			
			104	5520		5.26	5.3			
			108	5540		12.95	13.0			
			112	5560		13.02	13.1			
			116	5580		13.35	13.4			
			120	5600		13.24	13.3			
			124	5620		13.21	13.3			
			128	5640		13.26	13.3			
			132	5660		13.22	13.3			
			136	5680		5.97	6.0			
			140	5700		4.42	4.5			
			802.11n	20		100	5500	HTO	4.96	5.0
						104	5520		5.96	6.0
						108	5540		13.11	13.2
	112	5560			13.20	13.2				
	116	5580			13.25	13.3				
	120	5600			13.22	13.3				
	124	5620			13.24	13.3				
	128	5640			13.23	13.3				
	132	5660			13.22	13.3				
	136	5680			10.01	10.1				
	802.11ac	20	100	5500	HTO	4.96	5.0			
			104	5520		5.96	6.0			
			108	5540		13.11	13.2			
			112	5560		13.20	13.2			
			116	5580		13.25	13.3			
			120	5600		13.22	13.3			
			124	5620		13.24	13.3			
			128	5640		13.23	13.3			
	132	5660	13.22	13.3						
	136	5680	10.01	10.1						
	140	5700	4.53	4.6						

Band	Mode	Bandwidth (MHz)	Channel	Frequency (MHz)	Data Rate	Avg Power (dBm)	Tune-up Pwr (dBm)
5800 MHz	802.11a	20	149	5745	6 Mbps	16.01	16.1
			153	5765		16.24	16.3
			157	5785		16.50	16.5
			161	5805		16.87	16.9
			165	5825		17.19	17.2
	802.11n	20	149	5745	HT0	15.93	16.0
			153	5765		16.25	16.3
			157	5785		16.6	16.6
			161	5805		16.87	16.9
			165	5825		17.09	17.1
	802.11ac	20	149	5745	HT0	15.93	16.0
			153	5765		16.25	16.3
			157	5785		16.6	16.6
			161	5805		16.87	16.9
			165	5825		17.09	17.1

**Figure 8.1 Test Reduction Table – WiFi 2.4 GHz**

Mode	Side	Required Channel	Tested/Reduced
802.11b	Back	1 – 2412 MHz	Reduced <sup>1</sup>
		6 – 2437 MHz	Tested
		11 – 2462 MHz	Reduced <sup>1</sup>
	Front	1 – 2412 MHz	Tested
		6 – 2437 MHz	Tested
		11 – 2462 MHz	Reduced <sup>2</sup>
	Right	1 – 2412 MHz	Reduced <sup>1</sup>
		6 – 2437 MHz	Tested
		11 – 2462 MHz	Reduced <sup>1</sup>
	Top	1 – 2412 MHz	Tested
		6 – 2437 MHz	Tested
		11 – 2462 MHz	Reduced <sup>2</sup>
Remaining Sides			Reduced <sup>5</sup>
802.11g	Back	1 – 2412 MHz	Tested
		6 – 2437 MHz	Tested
		11 – 2462 MHz	Reduced <sup>2</sup>
	Front	1 – 2412 MHz	Tested
		6 – 2437 MHz	Tested
		11 – 2462 MHz	Reduced <sup>3</sup>
	Right	1 – 2412 MHz	Tested
		6 – 2437 MHz	Tested
		11 – 2462 MHz	Reduced <sup>2</sup>
	Top	1 – 2412 MHz	Tested
		6 – 2437 MHz	Tested
		11 – 2462 MHz	Reduced <sup>3</sup>
Remaining Sides			Reduced <sup>5</sup>
802.11n	Back	1 – 2412 MHz	Reduced <sup>4</sup>
		6 – 2437 MHz	Reduced <sup>4</sup>
		11 – 2462 MHz	Reduced <sup>4</sup>
	Front	1 – 2412 MHz	Reduced <sup>4</sup>
		6 – 2437 MHz	Reduced <sup>4</sup>
		11 – 2462 MHz	Reduced <sup>4</sup>
	Right	1 – 2412 MHz	Reduced <sup>4</sup>
		6 – 2437 MHz	Reduced <sup>4</sup>
		11 – 2462 MHz	Reduced <sup>4</sup>
	Top	1 – 2412 MHz	Reduced <sup>4</sup>
		6 – 2437 MHz	Reduced <sup>4</sup>
		11 – 2462 MHz	Reduced <sup>4</sup>
Remaining Sides			Reduced <sup>5</sup>

Reduced<sup>1</sup> – When the reported SAR is  $\leq 0.4$  W/kg, SAR is not required for the remaining test configuration per KDB 248227 D01 v02r02 section 5.1.1 1) page 9.

Reduced<sup>2</sup> – When the reported SAR is  $>0.4$  W/kg, test the next highest configuration until the SAR value is  $\leq 0.8$  W/kg per KDB 248227 D01 v02r02 section 5.1.1 2) page 9.

Reduced<sup>3</sup> – When the reported SAR is  $>0.8$  W/kg, test the next highest configuration until the SAR value is  $\leq 1.2$  W/kg per KDB 248227 D01 v02r02 section 5.1.1 3) page 9.

Reduced<sup>4</sup> – When the highest reported SAR for DSSS is adjusted by the ratio of OFDM to DSSS specified maximum output power and the adjusted SAR is  $\leq 1.2$  W/kg, SAR is not required per KDB 248227 D01 v02r02 section 5.2.2 2) page 10.

Reduced<sup>5</sup> – The side is excluded per 47 CFR 1.1307.

**Figure 8.2 Test Reduction Table – WiFi 5.1 GHz**

Mode	Side	Required Channel	Tested/Reduced
802.11a 5150 MHz	Back	36 – 5180 MHz	Reduced <sup>1</sup>
		40 – 5200 MHz	Reduced <sup>1</sup>
		44 – 5220 MHz	Reduced <sup>1</sup>
		48 – 5240 MHz	Reduced <sup>1</sup>
	Front	36 – 5180 MHz	Reduced <sup>1</sup>
		40 – 5200 MHz	Reduced <sup>1</sup>
		44 – 5220 MHz	Reduced <sup>1</sup>
		48 – 5240 MHz	Reduced <sup>1</sup>
	Right	36 – 5180 MHz	Reduced <sup>1</sup>
		40 – 5200 MHz	Reduced <sup>1</sup>
		44 – 5220 MHz	Reduced <sup>1</sup>
		48 – 5240 MHz	Reduced <sup>1</sup>
	Top	36 – 5180 MHz	Reduced <sup>1</sup>
		40 – 5200 MHz	Reduced <sup>1</sup>
		44 – 5220 MHz	Reduced <sup>1</sup>
		48 – 5240 MHz	Reduced <sup>1</sup>
Remaining Sides			Reduced <sup>2</sup>
802.11n 5150 MHz	Back	36 – 5180 MHz	Reduced <sup>1</sup>
		40 – 5200 MHz	Reduced <sup>1</sup>
		44 – 5220 MHz	Reduced <sup>1</sup>
		48 – 5240 MHz	Reduced <sup>1</sup>
	Front	36 – 5180 MHz	Reduced <sup>1</sup>
		40 – 5200 MHz	Reduced <sup>1</sup>
		44 – 5220 MHz	Reduced <sup>1</sup>
		48 – 5240 MHz	Reduced <sup>1</sup>
	Right	36 – 5180 MHz	Reduced <sup>1</sup>
		40 – 5200 MHz	Reduced <sup>1</sup>
		44 – 5220 MHz	Reduced <sup>1</sup>
		48 – 5240 MHz	Reduced <sup>1</sup>
	Top	36 – 5180 MHz	Reduced <sup>1</sup>
		40 – 5200 MHz	Reduced <sup>1</sup>
		44 – 5220 MHz	Reduced <sup>1</sup>
		48 – 5240 MHz	Reduced <sup>1</sup>
Remaining Sides			Reduced <sup>2</sup>

Reduced<sup>1</sup> – When the adjusted SAR is  $\leq 1.2$  W/kg, SAR is not required for the UNII-1 with the same or lower maximum output power in that test configuration per KDB 248227 D01 v02r02 section 5.3.1 1) page 11.

Reduced<sup>2</sup> – The side is excluded per 47 CFR 1.1307.

**Figure 8.3 Test Reduction Table – WiFi 5.2 GHz**

Mode	Side	Required Channel	Tested/Reduced
802.11a 5250 MHz	Back	52 – 5260 MHz	Reduced <sup>2</sup>
		56 – 5280 MHz	Tested
		60 – 5300 MHz	Tested
		64 – 5320 MHz	Reduced <sup>2</sup>
	Front	52 – 5260 MHz	Reduced <sup>3</sup>
		56 – 5280 MHz	Tested
		60 – 5300 MHz	Tested
		64 – 5320 MHz	Reduced <sup>3</sup>
	Right	52 – 5260 MHz	Reduced <sup>2</sup>
		56 – 5280 MHz	Tested
		60 – 5300 MHz	Tested
		64 – 5320 MHz	Reduced <sup>2</sup>
	Top	52 – 5260 MHz	Reduced <sup>2</sup>
		56 – 5280 MHz	Tested
		60 – 5300 MHz	Tested
		64 – 5320 MHz	Reduced <sup>2</sup>
Remaining Sides			Reduced <sup>4</sup>
802.11n 5250 MHz	Back	52 – 5260 MHz	Reduced <sup>2</sup>
		56 – 5280 MHz	Reduced <sup>2</sup>
		60 – 5300 MHz	Reduced <sup>2</sup>
		64 – 5320 MHz	Reduced <sup>2</sup>
	Front	52 – 5260 MHz	Reduced <sup>3</sup>
		56 – 5280 MHz	Reduced <sup>3</sup>
		60 – 5300 MHz	Reduced <sup>3</sup>
		64 – 5320 MHz	Reduced <sup>3</sup>
	Right	52 – 5260 MHz	Reduced <sup>2</sup>
		56 – 5280 MHz	Reduced <sup>2</sup>
		60 – 5300 MHz	Reduced <sup>2</sup>
		64 – 5320 MHz	Reduced <sup>2</sup>
	Top	52 – 5260 MHz	Reduced <sup>2</sup>
		56 – 5280 MHz	Reduced <sup>2</sup>
		60 – 5300 MHz	Reduced <sup>2</sup>
		64 – 5320 MHz	Reduced <sup>2</sup>
Remaining Sides			Reduced <sup>4</sup>

Reduced<sup>1</sup> – When the reported SAR is  $\leq 0.4$  W/kg, SAR is not required for the remaining test configuration per KDB 248227 D01 v02r02 section 5.1.1 1) page 9.

Reduced<sup>2</sup> – When the reported SAR is  $>0.4$  W/kg, test the next highest configuration until the SAR value is  $\leq 0.8$  W/kg per KDB 248227 D01 v02r02 section 5.1.1 2) page 9.

Reduced<sup>3</sup> – When the reported SAR is  $>0.8$  W/kg, test the next highest configuration until the SAR value is  $\leq 1.2$  W/kg per KDB 248227 D01 v02r02 section 5.1.1 3) page 9.

Reduced<sup>4</sup> – The side is excluded per 47 CFR 1.1307.



**Figure 8.4 Test Reduction Table – WiFi 5.6 GHz**

Mode	Side	Required Channel	Tested/Reduced
802.11a 5600 MHz	Back	100 – 5500 MHz	Reduced <sup>2</sup>
		104 – 5520 MHz	Reduced <sup>2</sup>
		108 – 5540 MHz	Reduced <sup>2</sup>
		112 – 5560 MHz	Reduced <sup>2</sup>
		116 – 5580 MHz	Tested
		120 – 5600 MHz	Reduced <sup>2</sup>
		124 – 5620 MHz	Tested
		128 – 5640 MHz	Reduced <sup>2</sup>
		132 – 5660 MHz	Reduced <sup>2</sup>
		136 – 5680 MHz	Reduced <sup>2</sup>
	140 – 5700 MHz	Reduced <sup>2</sup>	
	Front	100 – 5500 MHz	Reduced <sup>2</sup>
		104 – 5520 MHz	Reduced <sup>2</sup>
		108 – 5540 MHz	Reduced <sup>2</sup>
		112 – 5560 MHz	Reduced <sup>2</sup>
		116 – 5580 MHz	Tested
		120 – 5600 MHz	Reduced <sup>2</sup>
		124 – 5620 MHz	Tested
		128 – 5640 MHz	Reduced <sup>2</sup>
		132 – 5660 MHz	Reduced <sup>2</sup>
		136 – 5680 MHz	Reduced <sup>2</sup>
	140 – 5700 MHz	Reduced <sup>2</sup>	
	Right	100 – 5500 MHz	Reduced <sup>2</sup>
		104 – 5520 MHz	Reduced <sup>2</sup>
		108 – 5540 MHz	Reduced <sup>2</sup>
		112 – 5560 MHz	Reduced <sup>2</sup>
		116 – 5580 MHz	Tested
		120 – 5600 MHz	Reduced <sup>2</sup>
		124 – 5620 MHz	Tested
		128 – 5640 MHz	Reduced <sup>2</sup>
		132 – 5660 MHz	Reduced <sup>2</sup>
		136 – 5680 MHz	Reduced <sup>2</sup>
	140 – 5700 MHz	Reduced <sup>2</sup>	
	Top	100 – 5500 MHz	Reduced <sup>1</sup>
		104 – 5520 MHz	Reduced <sup>1</sup>
		108 – 5540 MHz	Reduced <sup>1</sup>
		112 – 5560 MHz	Reduced <sup>1</sup>
		116 – 5580 MHz	Reduced <sup>1</sup>
		120 – 5600 MHz	Reduced <sup>1</sup>
		124 – 5620 MHz	Tested
		128 – 5640 MHz	Reduced <sup>1</sup>
		132 – 5660 MHz	Reduced <sup>1</sup>
136 – 5680 MHz		Reduced <sup>1</sup>	
140 – 5700 MHz	Reduced <sup>1</sup>		
Remaining Sides			Reduced <sup>3</sup>

Reduced<sup>1</sup> – When the reported SAR is  $\leq 0.4$  W/kg, SAR is not required for the remaining test configuration per KDB 248227 D01 v02r02 section 5.1.1 1) page 9.

Reduced<sup>2</sup> – When the reported SAR is  $>0.4$  W/kg, test the next highest configuration until the SAR value is  $\leq 1.2$  W/kg per KDB 248227 D01 v02r02 section 5.1.1 2) page 9.

Reduced<sup>3</sup> – The side is excluded per 47 CFR 1.1307.

**Figure 8.5 Test Reduction Table – WiFi 5.6 GHz**

Mode	Side	Required Channel	Tested/Reduced
802.11n 5600 MHz	Back	100 – 5500 MHz	Reduced <sup>2</sup>
		104 – 5520 MHz	Reduced <sup>2</sup>
		108 – 5540 MHz	Reduced <sup>2</sup>
		112 – 5560 MHz	Reduced <sup>2</sup>
		116 – 5580 MHz	Reduced <sup>2</sup>
		120 – 5600 MHz	Reduced <sup>2</sup>
		124 – 5620 MHz	Reduced <sup>2</sup>
		128 – 5640 MHz	Reduced <sup>2</sup>
		132 – 5660 MHz	Reduced <sup>2</sup>
		136 – 5680 MHz	Reduced <sup>2</sup>
	140 – 5700 MHz	Reduced <sup>2</sup>	
	Front	100 – 5500 MHz	Reduced <sup>2</sup>
		104 – 5520 MHz	Reduced <sup>2</sup>
		108 – 5540 MHz	Reduced <sup>2</sup>
		112 – 5560 MHz	Reduced <sup>2</sup>
		116 – 5580 MHz	Reduced <sup>2</sup>
		120 – 5600 MHz	Reduced <sup>2</sup>
		124 – 5620 MHz	Reduced <sup>2</sup>
		128 – 5640 MHz	Reduced <sup>2</sup>
		132 – 5660 MHz	Reduced <sup>2</sup>
		136 – 5680 MHz	Reduced <sup>2</sup>
	140 – 5700 MHz	Reduced <sup>2</sup>	
	Right	100 – 5500 MHz	Reduced <sup>2</sup>
		104 – 5520 MHz	Reduced <sup>2</sup>
		108 – 5540 MHz	Reduced <sup>2</sup>
		112 – 5560 MHz	Reduced <sup>2</sup>
		116 – 5580 MHz	Reduced <sup>2</sup>
		120 – 5600 MHz	Reduced <sup>2</sup>
		124 – 5620 MHz	Reduced <sup>2</sup>
		128 – 5640 MHz	Reduced <sup>2</sup>
		132 – 5660 MHz	Reduced <sup>2</sup>
		136 – 5680 MHz	Reduced <sup>2</sup>
	140 – 5700 MHz	Reduced <sup>2</sup>	
	Top	100 – 5500 MHz	Reduced <sup>1</sup>
		104 – 5520 MHz	Reduced <sup>1</sup>
		108 – 5540 MHz	Reduced <sup>1</sup>
		112 – 5560 MHz	Reduced <sup>1</sup>
		116 – 5580 MHz	Reduced <sup>1</sup>
		120 – 5600 MHz	Reduced <sup>1</sup>
		124 – 5620 MHz	Reduced <sup>1</sup>
128 – 5640 MHz		Reduced <sup>1</sup>	
132 – 5660 MHz		Reduced <sup>1</sup>	
136 – 5680 MHz		Reduced <sup>1</sup>	
140 – 5700 MHz	Reduced <sup>1</sup>		
Remaining Sides			Reduced <sup>3</sup>

Reduced<sup>1</sup> – When the reported SAR is  $\leq 0.4$  W/kg, SAR is not required for the remaining test configuration per KDB 248227 D01 v02r02 section 5.1.1 1) page 9.

Reduced<sup>2</sup> – When the reported SAR is  $>0.4$  W/kg, test the next highest configuration until the SAR value is  $\leq 1.2$  W/kg per KDB 248227 D01 v02r02 section 5.1.1 2) page 9.

Reduced<sup>3</sup> – The side is excluded per 47 CFR 1.1307.

**Figure 8.6 Test Reduction Table – WiFi 5.8 GHz**

Mode	Side	Required Channel	Tested/Reduced
802.11a 5800 MHz	Back	149 – 5745 MHz	Reduced <sup>2</sup>
		153 – 5765 MHz	Reduced <sup>2</sup>
		157 – 5785 MHz	Tested
		161 – 5805 MHz	Reduced <sup>2</sup>
		165 – 5825 MHz	Tested
	Front	149 – 5745 MHz	Reduced <sup>3</sup>
		153 – 5765 MHz	Reduced <sup>3</sup>
		157 – 5785 MHz	Tested
		161 – 5805 MHz	Reduced <sup>3</sup>
		165 – 5825 MHz	Tested
	Right	149 – 5745 MHz	Reduced <sup>2</sup>
		153 – 5765 MHz	Reduced <sup>2</sup>
		157 – 5785 MHz	Tested
		161 – 5805 MHz	Reduced <sup>2</sup>
		165 – 5825 MHz	Tested
	Left	149 – 5745 MHz	Reduced <sup>1</sup>
		153 – 5765 MHz	Reduced <sup>1</sup>
		157 – 5785 MHz	Tested
		161 – 5805 MHz	Reduced <sup>1</sup>
		165 – 5825 MHz	Reduced <sup>1</sup>
Remaining Sides			Reduced <sup>4</sup>
802.11n 5800 MHz	Back	149 – 5745 MHz	Reduced <sup>2</sup>
		153 – 5765 MHz	Reduced <sup>2</sup>
		157 – 5785 MHz	Reduced <sup>2</sup>
		161 – 5805 MHz	Reduced <sup>2</sup>
		165 – 5825 MHz	Reduced <sup>2</sup>
	Front	149 – 5745 MHz	Reduced <sup>2</sup>
		153 – 5765 MHz	Reduced <sup>2</sup>
		157 – 5785 MHz	Reduced <sup>2</sup>
		161 – 5805 MHz	Reduced <sup>2</sup>
		165 – 5825 MHz	Reduced <sup>2</sup>
	Right	149 – 5745 MHz	Reduced <sup>2</sup>
		153 – 5765 MHz	Reduced <sup>2</sup>
		157 – 5785 MHz	Reduced <sup>2</sup>
		161 – 5805 MHz	Reduced <sup>2</sup>
		165 – 5825 MHz	Reduced <sup>2</sup>
	Left	149 – 5745 MHz	Reduced <sup>1</sup>
		153 – 5765 MHz	Reduced <sup>1</sup>
		157 – 5785 MHz	Reduced <sup>1</sup>
		161 – 5805 MHz	Reduced <sup>1</sup>
		165 – 5825 MHz	Reduced <sup>1</sup>
Remaining Sides			Reduced <sup>4</sup>

Reduced<sup>1</sup> – When the reported SAR is  $\leq 0.4$  W/kg, SAR is not required for the remaining test configuration per KDB 248227 D01 v02r02 section 5.1.1 1) page 9.

Reduced<sup>2</sup> – When the reported SAR is  $>0.4$  W/kg, test the next highest configuration until the SAR value is  $\leq 1.2$  W/kg per KDB 248227 D01 v02r02 section 5.1.1 2) page 9.

Reduced<sup>3</sup> – When the reported SAR is  $>0.8$  W/kg, test the next highest configuration until the SAR value is  $\leq 1.2$  W/kg per KDB 248227 D01 v02r02 section 5.1.1 3) page 9.

Reduced<sup>4</sup> – The side is excluded per 47 CFR 1.1307.

**SAR Data Summary – 2450 MHz Body 802.11b**

MEASUREMENT RESULTS								
Gap	Plot	Position	Frequency		Modulation	End Power	Measured SAR (W/kg)	Reported SAR (W/kg)
			MHz	Ch.		(dBm)		
0 mm	-----	Back	2437	6	DSSS	11.25	0.322	0.33
	-----		2412	1	OFDM	13.8	0.304	0.30
	-----		2437	6	OFDM	21.4	0.454	0.45
	-----	Front	2412	1	DSSS	10.18	0.395	0.40
	-----		2437	6	DSSS	11.25	0.402	0.41
	-----		2412	1	OFDM	13.8	0.465	0.47
	1	Right	2437	6	OFDM	21.4	0.867	0.87
	-----		2437	6	DSSS	11.25	0.389	0.39
	-----		2412	1	OFDM	13.8	0.362	0.36
	-----	Top	2437	6	OFDM	21.4	0.515	0.52
	-----		2412	1	DSSS	10.18	0.437	0.44
	-----		2437	6	DSSS	11.25	0.521	0.53
	-----		2412	1	OFDM	13.8	0.562	0.56
	-----	Repeat	2437	6	OFDM	21.4	0.804	0.80
	-----					21.4	0.849	0.85

**Body**  
**1.6 W/kg (mW/g)**  
 averaged over 1 gram

1. SAR Measurement  
 Phantom Configuration  Left Head  Eli4  Right Head  
 SAR Configuration  Head  Body
2. Test Signal Call Mode  Test Code  Base Station Simulator
3. Test Configuration  With Belt Clip  Without Belt Clip  N/A
4. Tissue Depth is at least 15.0 cm



Jay M. Moulton  
 Vice President

**SAR Data Summary – 5250 MHz Body 802.11a**

**MEASUREMENT RESULTS**

Gap	Plot	Position	Frequency		Modulation	End Power (dBm)	Measured SAR (W/kg)	Reported SAR (W/kg)
			MHz	Ch.				
0 mm	-----	Back	5280	56	OFDM	16.24	0.526	0.53
	-----		5300	60	OFDM	16.18	0.569	0.57
	-----	Front	5280	56	OFDM	16.24	0.923	0.94
	2		5300	60	OFDM	16.18	0.960	0.96
	-----	Right	5280	56	OFDM	16.24	0.459	0.47
	-----		5300	60	OFDM	16.18	0.487	0.49
	-----	Top	5280	56	OFDM	16.24	0.418	0.42
	-----		5300	60	OFDM	16.18	0.513	0.52
	-----	Repeat	5300	60	OFDM	16.18	0.952	0.96

**Body**  
**1.6 W/kg (mW/g)**  
 averaged over 1 gram

1. SAR Measurement
  - Phantom Configuration  Left Head  Eli4  Right Head
  - SAR Configuration  Head  Body
2. Test Signal Call Mode  Test Code  Base Station Simulator
3. Test Configuration  With Belt Clip  Without Belt Clip  N/A
4. Tissue Depth is at least 15.0 cm



Jay M. Moulton  
 Vice President

**SAR Data Summary – 5600 MHz Body 802.11a**

MEASUREMENT RESULTS								
Gap	Plot	Position	Frequency		Modulation	End Power	Measured SAR (W/kg)	Reported SAR (W/kg)
			MHz	Ch.		(dBm)		
0 mm	-----	Back	5580	116	OFDM	13.35	0.392	0.40
	-----		5620	124	OFDM	13.21	0.413	0.42
	-----	Front	5580	116	OFDM	13.35	0.537	0.54
	3		5620	124	OFDM	13.21	0.587	0.60
	-----	Right	5580	116	OFDM	13.35	0.452	0.46
	-----		5620	124	OFDM	13.21	0.468	0.48
	-----	Top	5620	124	OFDM	13.21	0.303	0.31
	-----	Repeat	5620	124	OFDM	13.21	0.566	0.58

**Body**  
**1.6 W/kg (mW/g)**  
averaged over 1 gram

1. SAR Measurement
  - Phantom Configuration  Left Head  Eli4  Right Head
  - SAR Configuration  Head  Body
2. Test Signal Call Mode  Test Code  Base Station Simulator
3. Test Configuration  With Belt Clip  Without Belt Clip  N/A
4. Tissue Depth is at least 15.0 cm



Jay M. Moulton  
Vice President

**SAR Data Summary – 5800 MHz Body 802.11a**

MEASUREMENT RESULTS								
Gap	Plot	Position	Frequency		Modulation	End Power	Measured SAR (W/kg)	Reported SAR (W/kg)
			MHz	Ch.		(dBm)		
0 mm	-----	Back	5785	157	OFDM	16.5	0.590	0.59
	-----		5825	165	OFDM	17.19	0.672	0.67
	-----	Front	5785	157	OFDM	16.5	0.970	0.97
	4		5825	165	OFDM	17.19	1.10	1.10
	-----	Right	5785	157	OFDM	16.5	0.540	0.54
	-----		5825	165	OFDM	17.19	0.585	0.59
	-----	Top	5785	157	OFDM	16.5	0.373	0.37
	-----	Repeat	5825	165	OFDM	17.19	1.08	1.08

**Body**  
**1.6 W/kg (mW/g)**  
averaged over 1 gram

1. SAR Measurement
  - Phantom Configuration  Left Head  Eli4  Right Head
  - SAR Configuration  Head  Body
2. Test Signal Call Mode  Test Code  Base Station Simulator
3. Test Configuration  With Belt Clip  Without Belt Clip  N/A
4. Tissue Depth is at least 15.0 cm



Jay M. Moulton  
Vice President

## 9. Test Equipment List

**Table 9.1 Equipment Specifications**

Type	Calibration Due Date	Calibration Done Date	Serial Number
Staubli Robot TX60L	N/A	N/A	F07/55M6A1/A/01
Measurement Controller CS8c	N/A	N/A	1012
ELI5 Flat Phantom	N/A	N/A	2037
Device Holder	N/A	N/A	N/A
Data Acquisition Electronics 4	04/22/2022	04/22/2021	1416
SPEAG E-Field Probe EX3DV4	02/16/2023	02/16/2022	3662
Speag Validation Dipole D2450V2	06/03/2022	06/03/2021	881
Speag Validation Dipole D5GHzV2	06/08/2022	06/08/2021	1119
Agilent N1911A Power Meter	03/16/2023	03/16/2022	GB45100254
Agilent N1922A Power Sensor	03/17/2023	03/17/2022	MY45240464
Agilent (HP) 8561E Spectrum Analyzer	03/17/2023	03/17/2022	31720068
Agilent (HP) 83752A Synthesized Sweeper	03/17/2023	03/17/2022	3610A01048
Agilent (HP) 8753C Vector Network Analyzer	03/17/2023	03/17/2022	3135A01724
Agilent (HP) 85047A S-Parameter Test Set	03/16/2023	03/16/2022	2904A00595
Agilent 778D Dual Directional Coupler	N/A	N/A	MY48220184
Anritsu MT8820C	N/A	N/A	6201381721
Apral Dielectric Probe Assembly	N/A	N/A	0011
Head Equivalent Matter (2450 MHz)	N/A	N/A	N/A
Head Equivalent Matter (3-6 GHz)	N/A	N/A	N/A



## 10. Conclusion

The SAR measurement indicates that the EUT complies with the RF radiation exposure limits of the FCC/IC. These measurements are taken to simulate the RF effects exposure under worst-case conditions. Precise laboratory measures were taken to assure repeatability of the tests. The tested device complies with the requirements in respect to all parameters subject to the test. The test results and statements relate only to the item(s) tested.

Please note that the absorption and distribution of electromagnetic energy in the body is a very complex phenomena that depends on the mass, shape, and size of the body; the orientation of the body with respect to the field vectors; and, the electrical properties of both the body and the environment. Other variables that may play a substantial role in possible biological effects are those that characterize the environment (e.g. ambient temperature, air velocity, relative humidity, and body insulation) and those that characterize the individual (e.g. age, gender, activity level, debilitation, or disease). Because innumerable factors may interact to determine the specific biological outcome of an exposure to electromagnetic fields, any protection guide shall consider maximal amplification of biological effects as a result of field-body interactions, environmental conditions, and physiological variables.

## 11. References

- [1] Federal Communications Commission, ET Docket 93-62, Guidelines for Evaluating the Environmental Effects of Radio Frequency Radiation, August 1996
- [2] ANSI/IEEE C95.1 – 1992, American National Standard Safety Levels with respect to Human Exposure to Radio Frequency Electromagnetic Fields, 300kHz to 100GHz, New York: IEEE, 1992.
- [3] ANSI/IEEE C95.3 – 1992, IEEE Recommended Practice for the Measurement of Potentially Hazardous Electromagnetic Fields – RF and Microwave, New York: IEEE, 1992.
- [4] International Electrotechnical Commission, IEC 62209-2 (Edition 1.0), Human Exposure to radio frequency fields from hand-held and body mounted wireless communication devices – Human models, instrumentation, and procedures – Part 2: Procedure to determine the specific absorption rate (SAR) for wireless communication devices used in close proximity to the human body (frequency range of 30 MHz to 6 GHz), March 2010.
- [5] IEEE Standard 1528 – 2013, IEEE Recommended Practice for Determining the Peak-Spatial Average Specific Absorption Rate (SAR) in the Human Head from Wireless Communication Devices: Measurement Techniques, June 2013.
- [6] Industry Canada, RSS – 102 Issue 5, Radio Frequency Exposure Compliance of Radiocommunication Apparatus (All Frequency Bands), March 2015.
- [7] Health Canada, Safety Code 6, Limits of Human Exposure to Radiofrequency Electromagnetic Fields in the Frequency Range from 3kHz to 300 GHz, 2009.

## Appendix A – System Validation Plots and Data

\*\*\*\*\*

Test Result for UIM Dielectric Parameter

Wed 11/May/2022

Freq Frequency(GHz)

FCC\_eH Limits for Head Epsilon

FCC\_sH Limits for Head Sigma

Test\_e Epsilon of UIM

Test\_s Sigma of UIM

\*\*\*\*\*

Freq	FCC_eH	FCC_sH	Test_e	Test_s
2.4100	39.26	1.76	38.74	1.79
2.4120	39.258	1.762	38.736	1.792*
2.4200	39.25	1.77	38.72	1.80
2.4300	39.24	1.78	38.70	1.81
2.4370	39.226	1.787	38.693	1.824*
2.4400	39.22	1.79	38.69	1.83
2.4420	39.216	1.792	38.680	1.832*
2.4500	39.20	1.80	38.64	1.84
2.4600	39.19	1.81	38.64	1.85
2.4620	39.186	1.812	38.636	1.852*
2.4700	39.17	1.82	38.62	1.86
2.4720	39.168	1.822	38.616	1.866*
2.4800	39.16	1.83	38.60	1.89

\* value interpolated

\*\*\*\*\*

Test Result for UIM Dielectric Parameter

Mon 09/May/2022

Freq Frequency(GHz)

FCC\_eH Limits for Head Epsilon

FCC\_sH Limits for Head Sigma

Test\_e Epsilon of UIM

Test\_s Sigma of UIM

\*\*\*\*\*

Freq	FCC_eH	FCC_sH	Test_e	Test_s
5.1000	36.10	4.55	35.46	4.62
5.1200	36.08	4.57	35.44	4.64
5.1400	36.05	4.59	35.41	4.66
5.1600	36.03	4.61	35.39	4.69
5.1800	36.01	4.63	35.37	4.71
5.2000	35.99	4.65	35.34	4.73
5.2200	35.96	4.68	35.32	4.75
5.2400	35.94	4.70	35.30	4.77
5.2500	35.93	4.71	35.285	4.785*
5.2600	35.92	4.72	35.27	4.80
5.2800	35.89	4.74	35.24	4.82
5.3000	35.87	4.76	35.21	4.84
5.3200	35.85	4.78	35.19	4.86
5.3400	35.83	4.80	35.17	4.89
5.3600	35.80	4.82	35.15	4.91
5.3800	35.78	4.84	35.12	4.93
5.4000	35.76	4.86	35.10	4.95
5.4200	35.73	4.88	35.08	4.98
5.4400	35.71	4.90	35.07	5.00
5.4600	35.69	4.92	35.04	5.02
5.4800	35.67	4.94	35.01	5.04
5.5000	35.64	4.96	34.98	5.06
5.5200	35.62	4.98	34.96	5.08
5.5400	35.60	5.00	34.94	5.10
5.5600	35.57	5.02	34.92	5.13
5.5800	35.55	5.04	34.89	5.15
5.6000	35.53	5.07	34.87	5.17
5.6200	35.51	5.09	34.84	5.19
5.6400	35.48	5.11	34.82	5.22
5.6600	35.46	5.13	34.80	5.24
5.6800	35.44	5.15	34.78	5.26
5.7000	35.41	5.17	34.75	5.28
5.7200	35.39	5.19	34.73	5.31
5.7400	35.37	5.21	34.71	5.33
5.7450	35.365	5.215	34.705	5.335*
5.7500	35.36	5.22	34.70	5.34*
5.7600	35.35	5.23	34.69	5.35
5.7800	35.32	5.25	34.67	5.37
5.7850	35.315	5.255	34.66	5.375*
5.8000	35.30	5.27	34.63	5.39
5.8200	35.28	5.29	34.61	5.42
5.8250	35.273	5.295	34.605	5.425*
5.8400	35.25	5.31	34.59	5.44
5.8600	35.23	5.33	34.57	5.46

\* value interpolated

# RF Exposure Lab

## Plot 1

**DUT: Dipole 2450 MHz D2450V2; Type: D2450V2; Serial: D2450V2 - SN: 881**

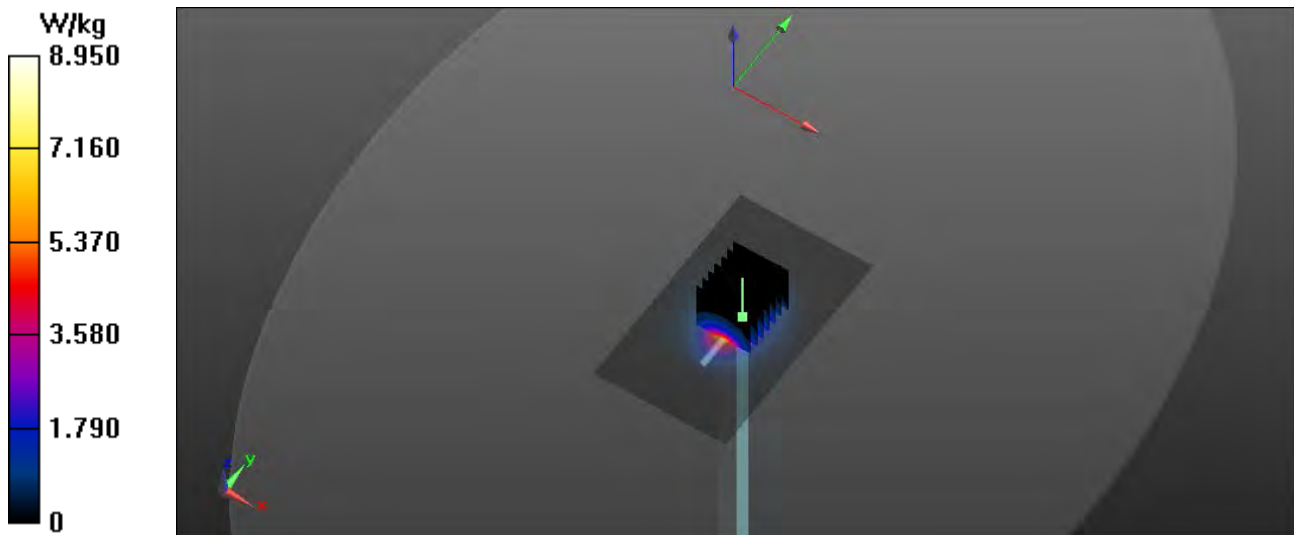
Communication System: CW; Frequency: 2450 MHz; Duty Cycle: 1:1  
Medium: HSL2450; Medium parameters used:  $f = 2450$  MHz;  $\sigma = 1.84$  S/m;  $\epsilon_r = 38.64$ ;  $\rho = 1000$  kg/m<sup>3</sup>  
Phantom section: Flat Section

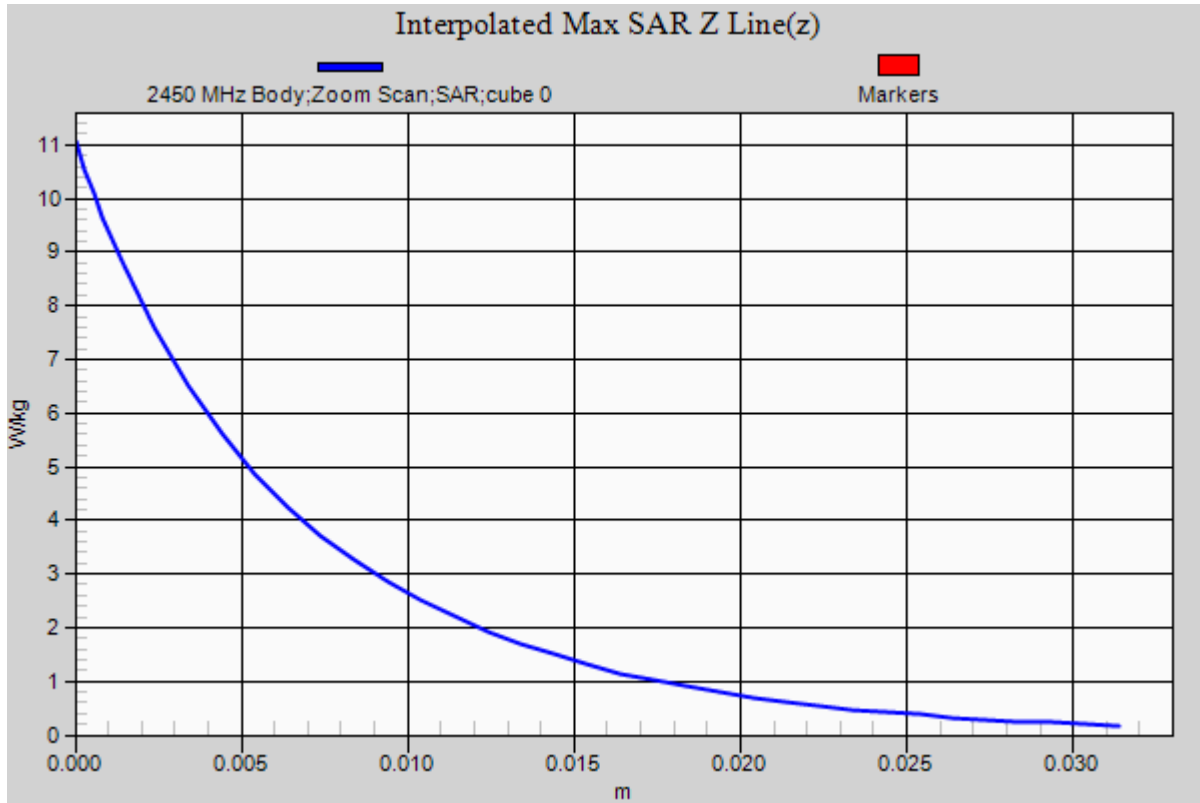
Test Date: Date: 5/11/2022; Ambient Temp: 23 °C; Tissue Temp: 21 °C  
Probe: EX3DV4 – SN3662; ConvF(7.28, 7.28, 7.28); Calibrated: 2/16/2022;  
Sensor-Surface: 2mm (Mechanical Surface Detection)  
Electronics: DAE4 Sn1416; Calibrated: 4/12/2022  
Phantom: ELI v5.0; Type: QDOVA002AA; Serial: 2037  
Measurement SW: DASY52, Version 52.10 (0); SEMCAD X Version 14.6.10 (7417)

### Procedure Notes:

**Head Verification/2450 MHz/Area Scan (61x101x1):** Interpolated grid: dx=1.200 mm, dy=1.200 mm  
Maximum value of SAR (interpolated) = 8.93 W/kg

**Head Verification/2450 MHz/Zoom Scan (7x7x7)/Cube 0:** Measurement grid: dx=5mm, dy=5mm, dz=5mm  
Reference Value = 53.517 V/m; Power Drift = -0.02 dB  
Peak SAR (extrapolated) = 11.09 W/kg  
 $P_{in} = 100$  mW  
**SAR(1 g) = 5.48 W/kg; SAR(10 g) = 2.56 W/kg**  
Maximum value of SAR (measured) = 8.84 W/kg





# RF Exposure Lab

## Plot 2

**DUT: Dipole D5GHzV2; Type: D5GHzV2; Serial: D5GHzV2 - SN: 1119**

Communication System: CW; Frequency: 5250 MHz; Duty Cycle: 1:1  
Medium: HSL 3-6 GHz; Medium parameters used (interpolated):  $f = 5250$  MHz;  $\sigma = 4.785$  S/m;  $\epsilon_r = 35.285$ ;  $\rho = 1000$  kg/m<sup>3</sup>  
Phantom section: Flat Section

Test Date: Date: 5/9/2022; Ambient Temp: 23 °C; Tissue Temp: 21 °C  
Probe: EX3DV4 – SN3662; ConvF(4.95, 4.95, 4.95); Calibrated: 2/16/2022;  
Sensor-Surface: 2mm (Mechanical Surface Detection)  
Electronics: DAE4 Sn1416; Calibrated: 4/12/2022  
Phantom: ELI v5.0; Type: QDOVA002AA; Serial: 2037  
Measurement SW: DASY52, Version 52.10 (0); SEMCAD X Version 14.6.10 (7417)

### Procedure Notes:

**Head Verification/5200 MHz/Area Scan (61x81x1):** Interpolated grid: dx=1.000 mm, dy=1.000 mm

[Info: Interpolated medium parameters used for SAR evaluation.](#)

Maximum value of SAR (interpolated) = 1.89 W/kg

**Head Verification/5200 MHz/Zoom Scan (7x7x12)/Cube 0:** Measurement grid: dx=4mm, dy=4mm, dz=2mm

Reference Value = 12.708 V/m; Power Drift = 0.02 dB

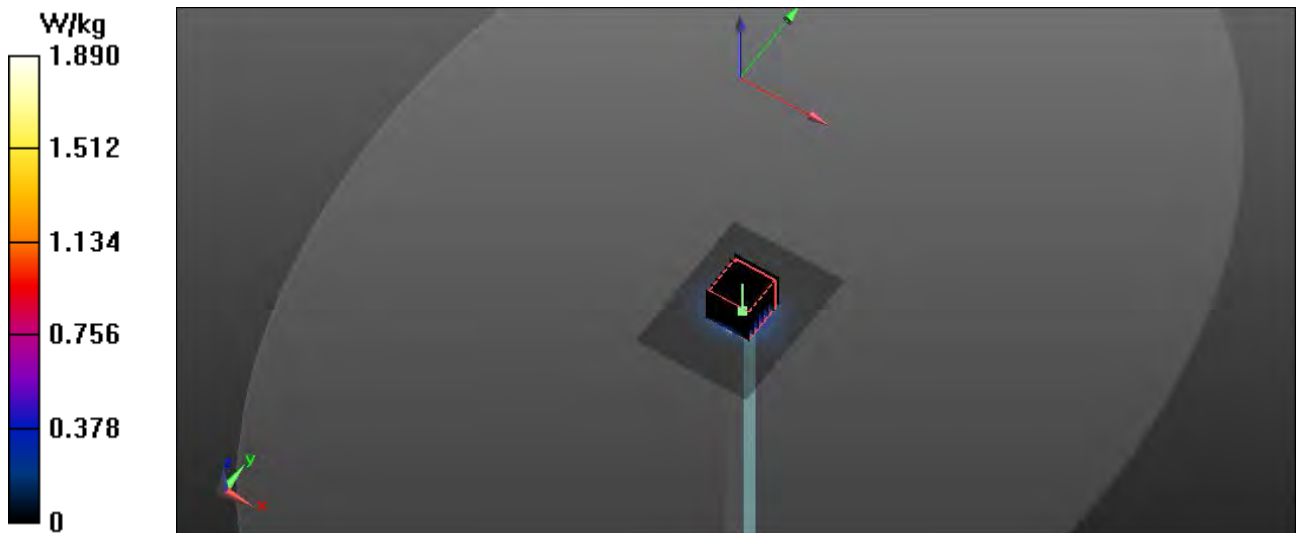
Peak SAR (extrapolated) = 3.21 W/kg

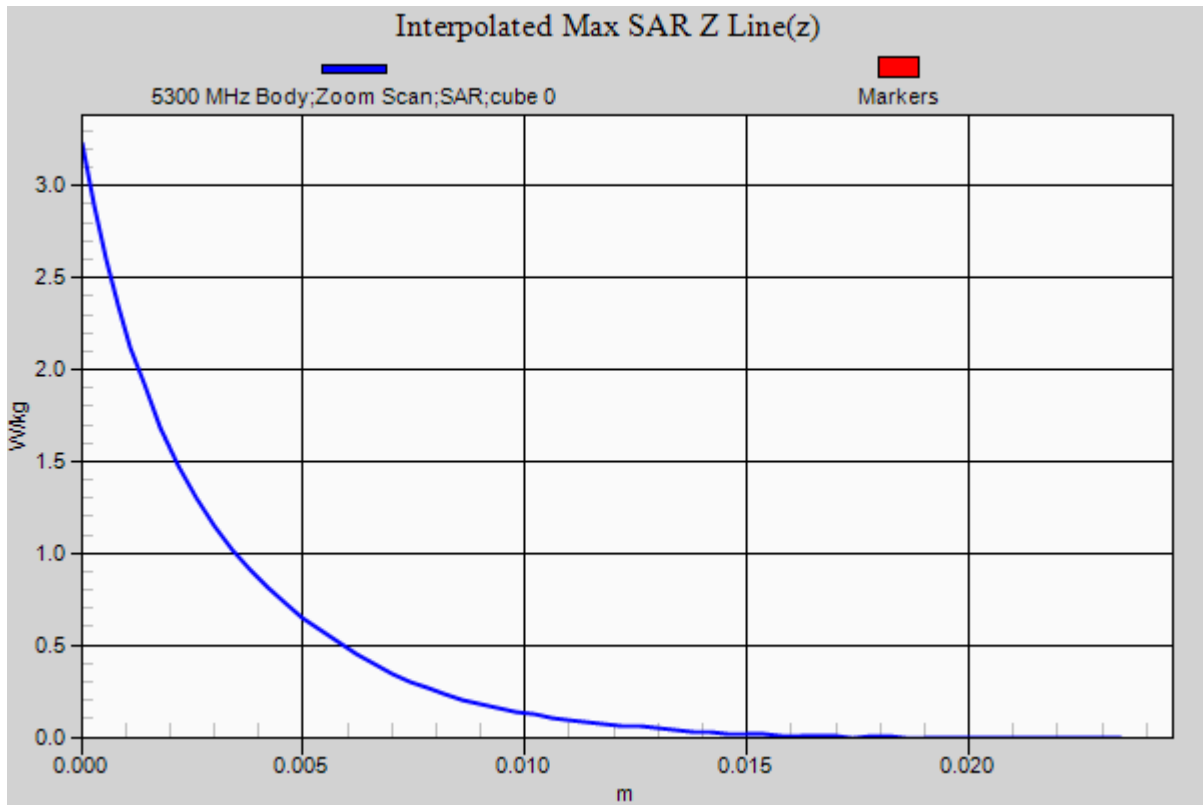
Pin=10 mW

**SAR(1 g) = 0.807 W/kg; SAR(10 g) = 0.234 W/kg**

[Info: Interpolated medium parameters used for SAR evaluation.](#)

Maximum value of SAR (measured) = 1.89 W/kg







# RF Exposure Lab

## Plot 3

**DUT: Dipole D5GHzV2; Type: D5GHzV2; Serial: D5GHzV2 - SN: 1119**

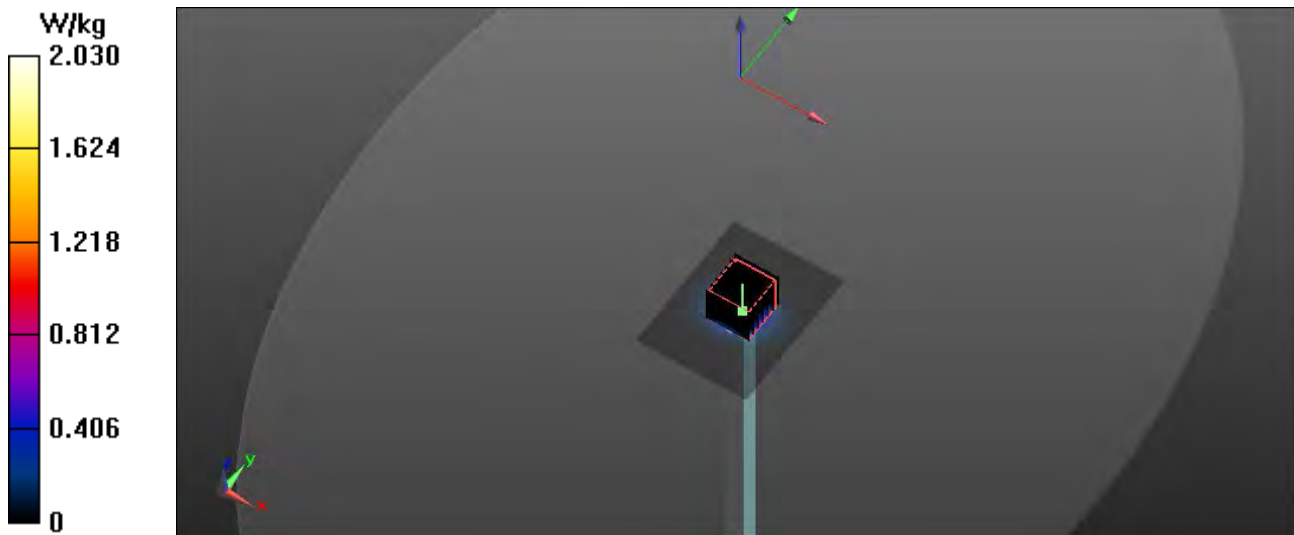
Communication System: CW; Frequency: 5600 MHz; Duty Cycle: 1:1  
 Medium: HSL 3-6 GHz; Medium parameters used:  $f = 5600$  MHz;  $\sigma = 5.17$  S/m;  $\epsilon_r = 34.87$ ;  $\rho = 1000$  kg/m<sup>3</sup>  
 Phantom section: Flat Section

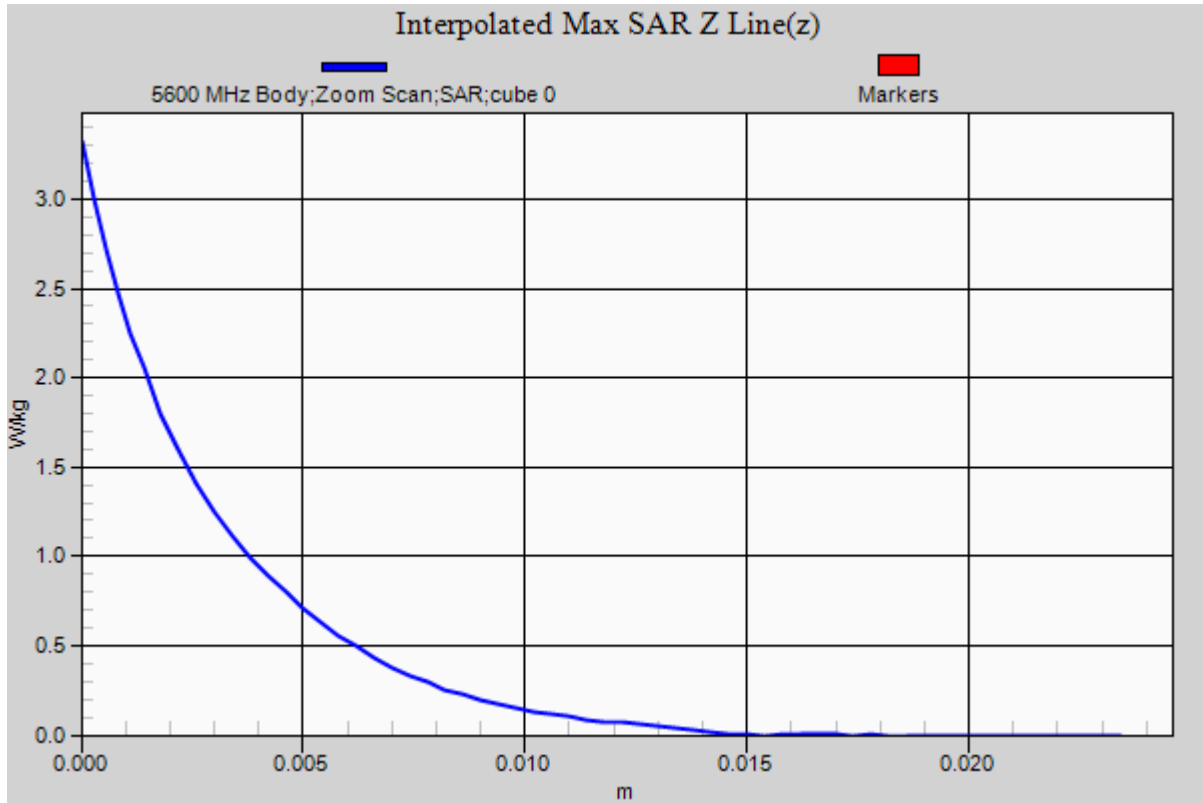
Test Date: Date: 5/9/2022; Ambient Temp: 23 °C; Tissue Temp: 21 °C  
 Probe: EX3DV4 – SN3662; ConvF(4.66, 4.66, 4.66); Calibrated: 2/16/2022;  
 Sensor-Surface: 2mm (Mechanical Surface Detection)  
 Electronics: DAE4 Sn1416; Calibrated: 4/12/2022  
 Phantom: ELI v5.0; Type: QDOVA002AA; Serial: 2037  
 Measurement SW: DASY52, Version 52.10 (0); SEMCAD X Version 14.6.10 (7417)

### Procedure Notes:

**Head Verification/5600 MHz/Area Scan (61x81x1):** Interpolated grid: dx=1.000 mm, dy=1.000 mm  
 Maximum value of SAR (interpolated) = 2.02 W/kg

**Head Verification/5600 MHz/Zoom Scan (7x7x12)/Cube 0:** Measurement grid: dx=4mm, dy=4mm, dz=2mm  
 Reference Value = 13.297 V/m; Power Drift = -0.03 dB  
 Peak SAR (extrapolated) = 3.32 W/kg  
 Pin=10 mW  
**SAR(1 g) = 0.843 W/kg; SAR(10 g) = 0.248 W/kg**  
 Maximum value of SAR (measured) = 2.02 W/kg





# RF Exposure Lab

## Plot 4

**DUT: Dipole D5GHzV2; Type: D5GHzV2; Serial: D5GHzV2 - SN: 1119**

Communication System: CW; Frequency: 5750 MHz; Duty Cycle: 1:1  
Medium: HSL 3-6 GHz; Medium parameters used (interpolated):  $f = 5750$  MHz;  $\sigma = 5.34$  S/m;  $\epsilon_r = 34.7$ ;  $\rho = 1000$  kg/m<sup>3</sup>  
Phantom section: Flat Section

Test Date: Date: 5/9/2022; Ambient Temp: 23 °C; Tissue Temp: 21 °C  
Probe: EX3DV4 – SN3662; ConvF(4.8, 4.8, 4.8); Calibrated: 2/16/2022;  
Sensor-Surface: 2mm (Mechanical Surface Detection)  
Electronics: DAE4 Sn1416; Calibrated: 4/12/2022  
Phantom: ELI v5.0; Type: QDOVA002AA; Serial: 2037  
Measurement SW: DASY52, Version 52.10 (0); SEMCAD X Version 14.6.10 (7417)

### Procedure Notes:

**Head Verification/5800 MHz/Area Scan (61x81x1):** Interpolated grid: dx=1.000 mm, dy=1.000 mm

[Info: Interpolated medium parameters used for SAR evaluation.](#)

Maximum value of SAR (interpolated) = 1.76 W/kg

**Head Verification/5800 MHz/Zoom Scan (7x7x12)/Cube 0:** Measurement grid: dx=4mm, dy=4mm, dz=2mm

Reference Value = 12.402 V/m; Power Drift = 0.01 dB

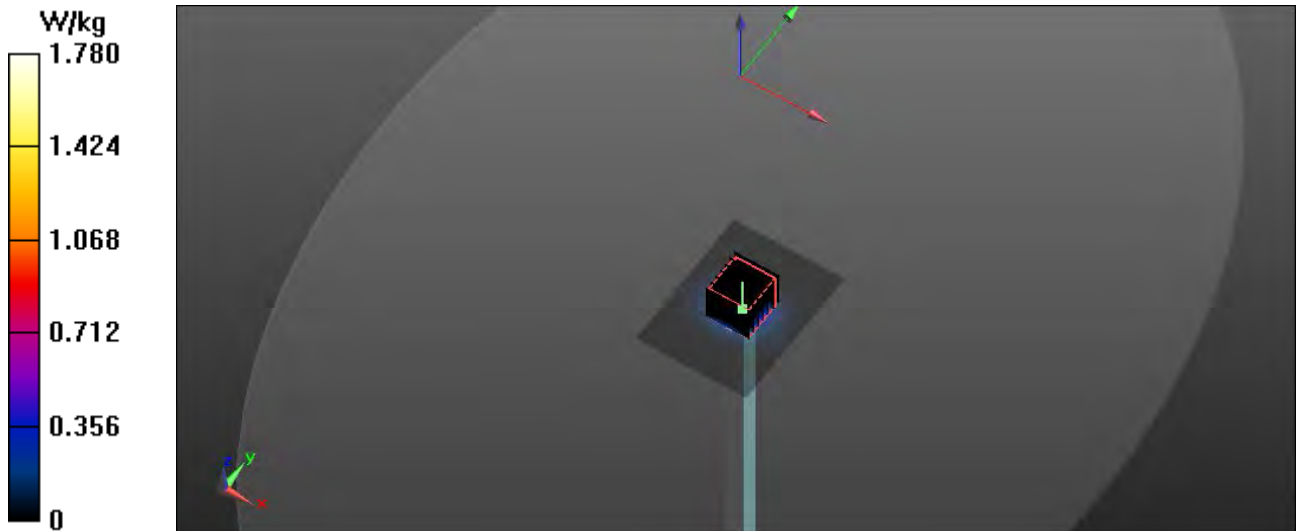
Peak SAR (extrapolated) = 2.88 W/kg

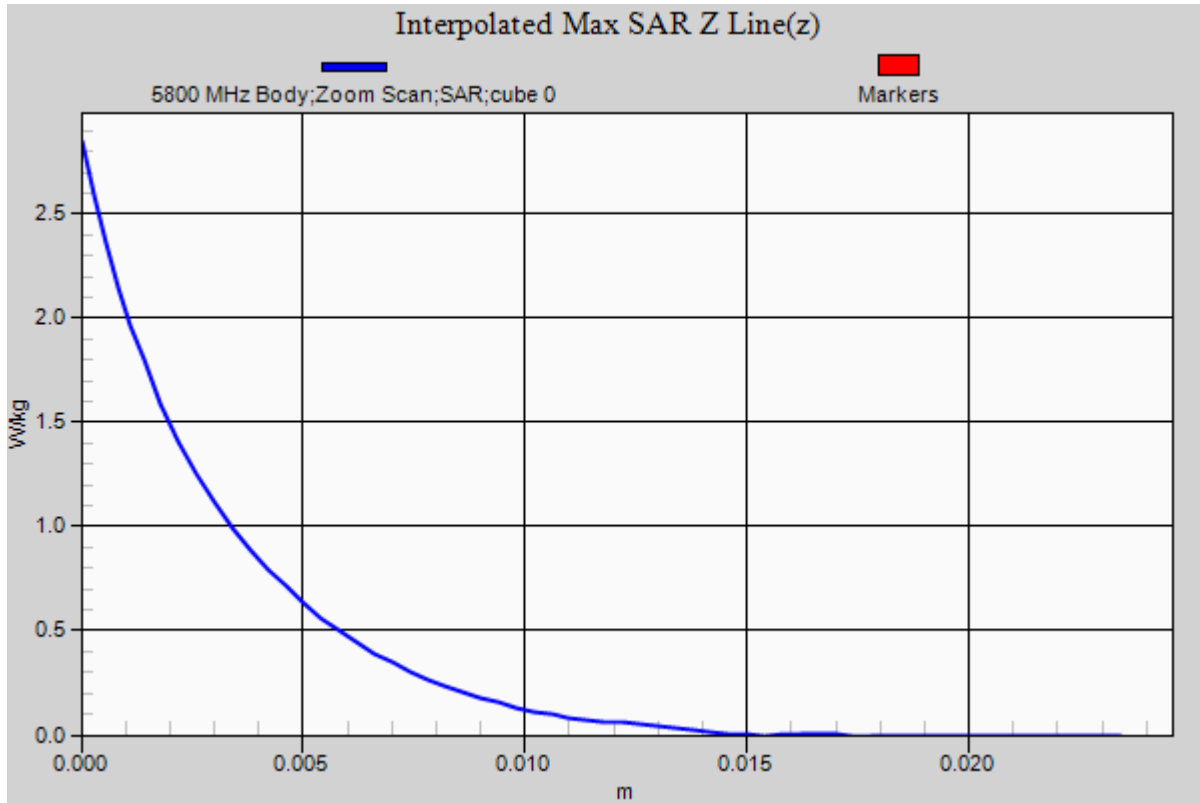
Pin=10 mW

**SAR(1 g) = 0.815 W/kg; SAR(10 g) = 0.236 W/kg**

[Info: Interpolated medium parameters used for SAR evaluation.](#)

Maximum value of SAR (measured) = 1.78 W/kg





## Appendix B – SAR Test Data Plots

# RF Exposure Lab

## Plot 1

**DUT: RC-GZ1; Type: Remote; Serial: Eng 1**

Communication System: WiFi 802.11g (OFDM, 6 Mbps); Frequency: 2412 MHz; Duty Cycle: 1:1  
Medium: HSL2450; Medium parameters used (interpolated):  $f = 2437$  MHz;  $\sigma = 1.824$  S/m;  $\epsilon_r = 38.693$ ;  $\rho = 1000$  kg/m<sup>3</sup>  
Phantom section: Flat Section

Test Date: Date: 5/11/2022; Ambient Temp: 23 °C; Tissue Temp: 21 °C

Probe: EX3DV4 - SN3662; ConvF(7.28, 7.28, 7.28); Calibrated: 2/16/2022  
Sensor-Surface: 2mm (Mechanical Surface Detection)  
Electronics: DAE4 Sn1416; Calibrated: 4/12/2022  
Phantom: ELI v5.0; Type: QDOVA002AA; Serial: 2037  
Measurement SW: DASY52, Version 52.10 (0); SEMCAD X Version 14.6.10 (7417)

### Procedure Notes:

**2.4 GHz/Front 6/Area Scan (7x9x1):** Measurement grid: dx=10mm, dy=10mm

[Info: Interpolated medium parameters used for SAR evaluation.](#)

Maximum value of SAR (measured) = 1.19 W/kg

**2.4 GHz/Front 6/Zoom Scan (7x7x7)/Cube 0:** Measurement grid: dx=5mm, dy=5mm, dz=5mm

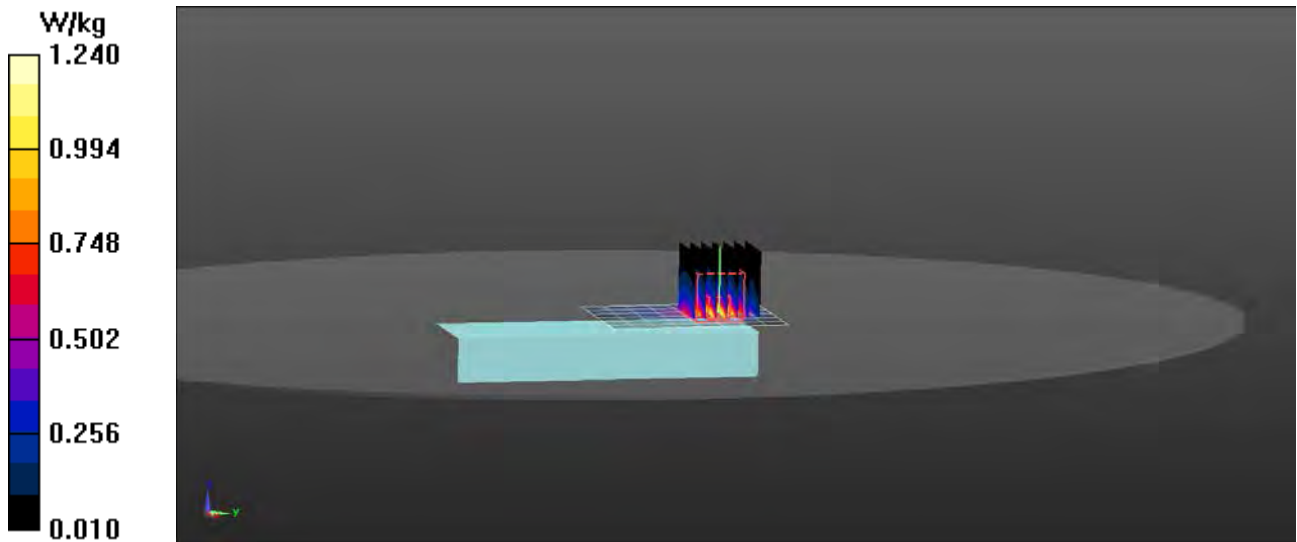
Reference Value = 5.068 V/m; Power Drift = 0.03 dB

Peak SAR (extrapolated) = 1.69 W/kg

**SAR(1 g) = 0.867 W/kg; SAR(10 g) = 0.442 W/kg**

[Info: Interpolated medium parameters used for SAR evaluation.](#)

Maximum value of SAR (measured) = 1.24 W/kg



# RF Exposure Lab

## Plot 2

**DUT: RC-GZ1; Type: Remote; Serial: Eng 1**

Communication System: WiFi 802.11a (OFDM, 6 Mbps); Frequency: 5300 MHz; Duty Cycle: 1:1  
Medium: HSL3-6GHz; Medium parameters used:  $f = 5300$  MHz;  $\sigma = 4.84$  S/m;  $\epsilon_r = 35.21$ ;  $\rho = 1000$  kg/m<sup>3</sup>  
Phantom section: Flat Section

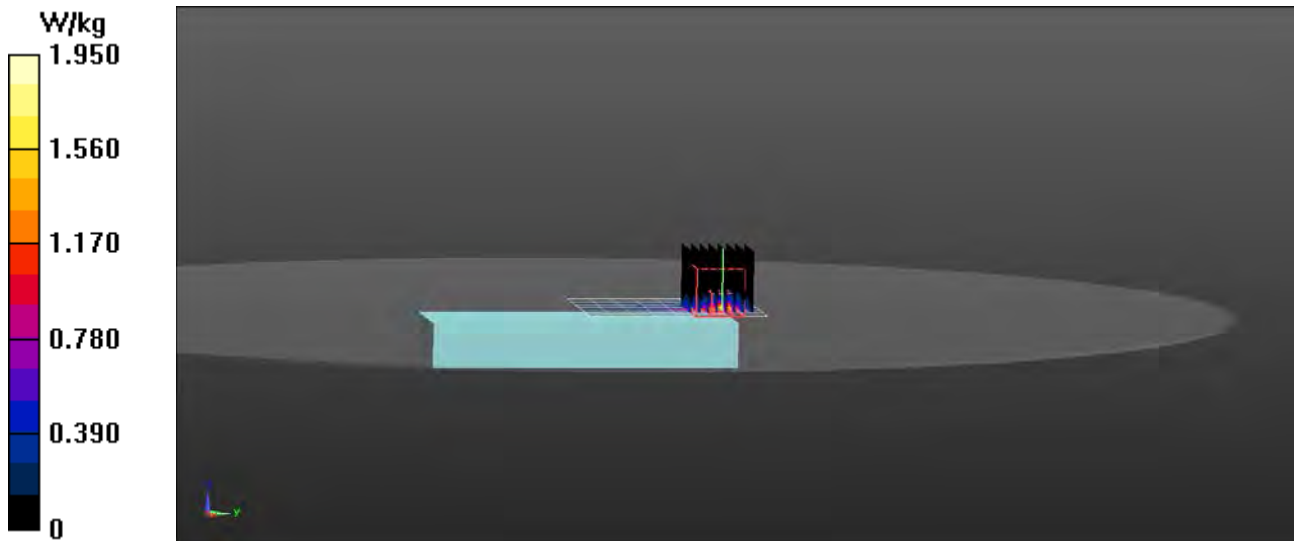
Test Date: Date: 5/10/2022; Ambient Temp: 23 °C; Tissue Temp: 21 °C

Probe: EX3DV4 - SN3662; ConvF(4.95, 4.95, 4.95); Calibrated: 2/16/2022  
Sensor-Surface: 2mm (Mechanical Surface Detection)  
Electronics: DAE4 Sn1416; Calibrated: 4/12/2022  
Phantom: ELI v5.0; Type: QDOVA002AA; Serial: 2037  
Measurement SW: DASY52, Version 52.10 (0); SEMCAD X Version 14.6.10 (7417)

### Procedure Notes:

**5.2 GHz/Front 60/Area Scan (7x9x1):** Measurement grid: dx=10mm, dy=10mm  
Maximum value of SAR (measured) = 1.96 W/kg

**5.2 GHz/Front 60/Zoom Scan (8x8x8)/Cube 0:** Measurement grid: dx=4mm, dy=4mm, dz=2mm  
Reference Value = 4.506 V/m; Power Drift = -0.05 dB  
Peak SAR (extrapolated) = 3.86 W/kg  
**SAR(1 g) = 0.960 W/kg; SAR(10 g) = 0.320 W/kg**  
Maximum value of SAR (measured) = 1.95 W/kg



# RF Exposure Lab

## Plot 3

DUT: RC-GZ1; Type: Remote; Serial: Eng 1

Communication System: WiFi 802.11a (OFDM, 6 Mbps); Frequency: 5620 MHz; Duty Cycle: 1:1  
Medium: HSL3-6GHz; Medium parameters used:  $f = 5620$  MHz;  $\sigma = 5.19$  S/m;  $\epsilon_r = 34.84$ ;  $\rho = 1000$  kg/m<sup>3</sup>  
Phantom section: Flat Section

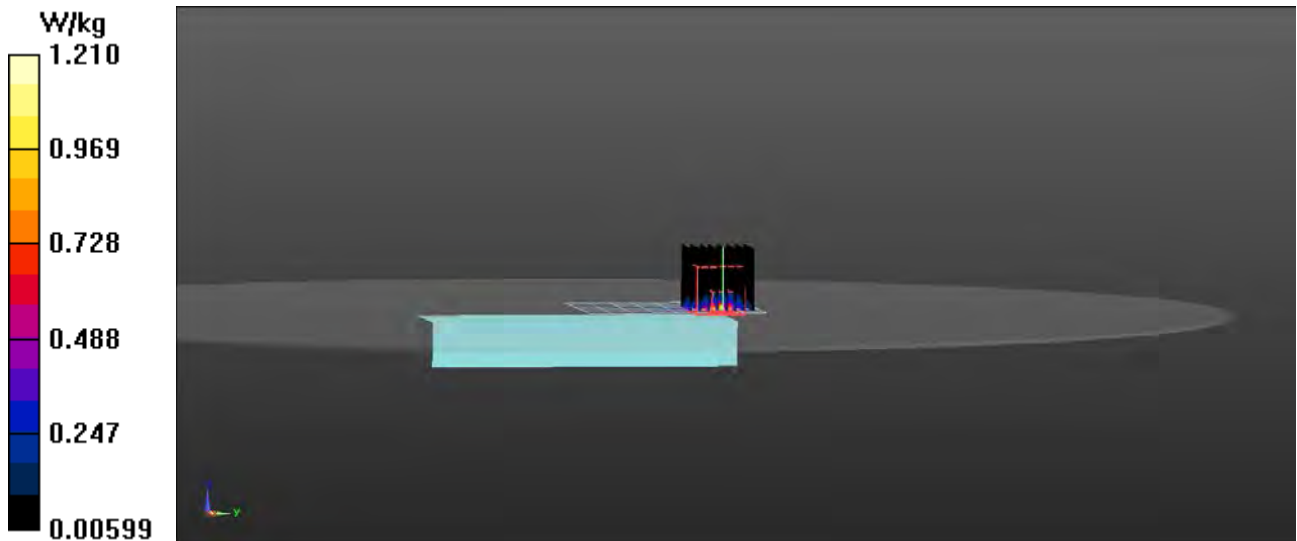
Test Date: Date: 5/10/2022; Ambient Temp: 23 °C; Tissue Temp: 21 °C

Probe: EX3DV4 - SN3662; ConvF(4.66, 4.66, 4.66); Calibrated: 2/16/2022  
Sensor-Surface: 2mm (Mechanical Surface Detection)  
Electronics: DAE4 Sn1416; Calibrated: 4/12/2022  
Phantom: ELI v5.0; Type: QDOVA002AA; Serial: 2037  
Measurement SW: DASY52, Version 52.10 (0); SEMCAD X Version 14.6.10 (7417)

### Procedure Notes:

**5.6 GHz/Front 124/Area Scan (7x9x1):** Measurement grid: dx=10mm, dy=10mm  
Maximum value of SAR (measured) = 1.07 W/kg

**5.6 GHz/Front 124/Zoom Scan (8x8x8)/Cube 0:** Measurement grid: dx=4mm, dy=4mm, dz=2mm  
Reference Value = 2.726 V/m; Power Drift = 0.02 dB  
Peak SAR (extrapolated) = 2.68 W/kg  
**SAR(1 g) = 0.587 W/kg; SAR(10 g) = 0.189 W/kg**  
Maximum value of SAR (measured) = 1.21 W/kg





# RF Exposure Lab

## Plot 4

**DUT: RC-GZ1; Type: Remote; Serial: Eng 1**

Communication System: WiFi 802.11a (OFDM, 6 Mbps); Frequency: 5825 MHz; Duty Cycle: 1:1  
Medium: HSL3-6GHz; Medium parameters used (interpolated):  $f = 5825$  MHz;  $\sigma = 5.425$  S/m;  $\epsilon_r = 34.605$ ;  $\rho = 1000$  kg/m<sup>3</sup>  
Phantom section: Flat Section

Test Date: Date: 5/10/2022; Ambient Temp: 23 °C; Tissue Temp: 21 °C

Probe: EX3DV4 - SN3662; ConvF(4.8, 4.8, 4.8); Calibrated: 2/16/2022  
Sensor-Surface: 2mm (Mechanical Surface Detection)  
Electronics: DAE4 Sn1416; Calibrated: 4/12/2022  
Phantom: ELI v5.0; Type: QDOVA002AA; Serial: 2037  
Measurement SW: DASY52, Version 52.10 (0); SEMCAD X Version 14.6.10 (7417)

### Procedure Notes:

**5.8 GHz/Front 165/Area Scan (7x9x1):** Measurement grid: dx=10mm, dy=10mm

[Info: Interpolated medium parameters used for SAR evaluation.](#)

Maximum value of SAR (measured) = 1.92 W/kg

**5.8 GHz/Front 165/Zoom Scan (8x8x8)/Cube 0:** Measurement grid: dx=4mm, dy=4mm, dz=2mm

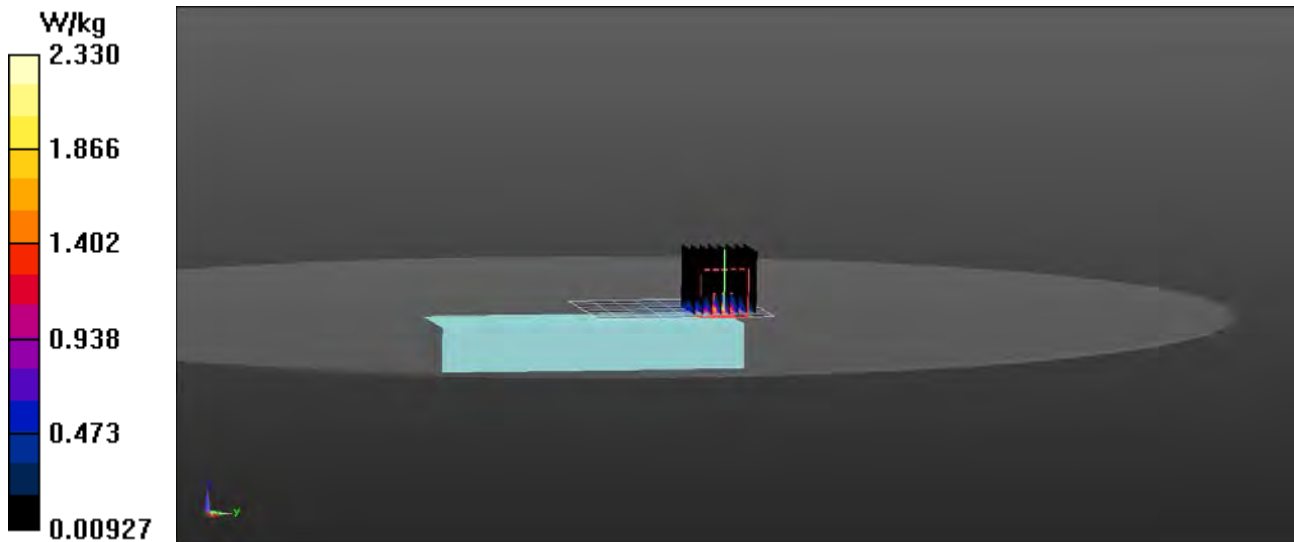
Reference Value = 3.290 V/m; Power Drift = -0.01 dB

Peak SAR (extrapolated) = 5.35 W/kg

**SAR(1 g) = 1.1 W/kg; SAR(10 g) = 0.318 W/kg**

[Info: Interpolated medium parameters used for SAR evaluation.](#)

Maximum value of SAR (measured) = 2.33 W/kg



## Appendix D – Probe Calibration Data Sheets



Accredited by the Swiss Accreditation Service (SAS)  
The Swiss Accreditation Service is one of the signatories to the EA  
Multilateral Agreement for the recognition of calibration certificates

Accreditation No.: **SCS 0108**

Client **RF Exposure Lab**

Certificate No: **EX3-3662\_Feb22**

## CALIBRATION CERTIFICATE

Object **EX3DV4 - SN:3662**

Calibration procedure(s) **QA CAL-01.v9, QA CAL-12.v9, QA CAL-14.v6, QA CAL-23.v5,  
QA CAL-25.v7  
Calibration procedure for dosimetric E-field probes**

Calibration date: **February 16, 2022**

This calibration certificate documents the traceability to national standards, which realize the physical units of measurements (SI).  
The measurements and the uncertainties with confidence probability are given on the following pages and are part of the certificate.

All calibrations have been conducted in the closed laboratory facility: environment temperature (22 ± 3)°C and humidity < 70%.

Calibration Equipment used (M&TE critical for calibration)

Primary Standards	ID	Cal Date (Certificate No.)	Scheduled Calibration
Power meter NRP	SN: 104778	09-Apr-21 (No. 217-03291/03292)	Apr-22
Power sensor NRP-Z91	SN: 103244	09-Apr-21 (No. 217-03291)	Apr-22
Power sensor NRP-Z91	SN: 103245	09-Apr-21 (No. 217-03292)	Apr-22
Reference 20 dB Attenuator	SN: CC2552 (20x)	09-Apr-21 (No. 217-03343)	Apr-22
DAE4	SN: 660	13-Oct-21 (No. DAE4-660_Oct21)	Oct-22
Reference Probe ES3DV2	SN: 3013	27-Dec-21 (No. ES3-3013_Dec21)	Dec-22
Secondary Standards	ID	Check Date (in house)	Scheduled Check
Power meter E4419B	SN: GB41293874	06-Apr-16 (in house check Jun-20)	In house check: Jun-22
Power sensor E4412A	SN: MY41498087	06-Apr-16 (in house check Jun-20)	In house check: Jun-22
Power sensor E4412A	SN: 000110210	06-Apr-16 (in house check Jun-20)	In house check: Jun-22
RF generator HP 8648C	SN: US3642U01700	04-Aug-99 (in house check Jun-20)	In house check: Jun-22
Network Analyzer E8358A	SN: US41080477	31-Mar-14 (in house check Oct-20)	In house check: Oct-22

	<b>Name</b>	<b>Function</b>	<b>Signature</b>
Calibrated by:	<b>Jeton Kastrati</b>	<b>Laboratory Technician</b>	
Approved by:	<b>Sven Kühn</b>	<b>Deputy Manager</b>	

Issued: February 18, 2022

This calibration certificate shall not be reproduced except in full without written approval of the laboratory.



Accredited by the Swiss Accreditation Service (SAS)

Accreditation No.: **SCS 0108**

The Swiss Accreditation Service is one of the signatories to the EA  
Multilateral Agreement for the recognition of calibration certificates

### Glossary:

TSL	tissue simulating liquid
NORM <sub>x,y,z</sub>	sensitivity in free space
ConvF	sensitivity in TSL / NORM <sub>x,y,z</sub>
DCP	diode compression point
CF	crest factor (1/duty_cycle) of the RF signal
A, B, C, D	modulation dependent linearization parameters
Polarization $\varphi$	$\varphi$ rotation around probe axis
Polarization $\vartheta$	$\vartheta$ rotation around an axis that is in the plane normal to probe axis (at measurement center), i.e., $\vartheta = 0$ is normal to probe axis
Connector Angle	information used in DASY system to align probe sensor X to the robot coordinate system

### Calibration is Performed According to the Following Standards:

- IEC/IEEE 62209-1528, "Measurement Procedure For The Assessment Of Specific Absorption Rate Of Human Exposure To Radio Frequency Fields From Hand-Held And Body-Worn Wireless Communication Devices - Part 1528: Human Models, Instrumentation And Procedures (Frequency Range of 4 MHz to 10 GHz)", October 2020.
- KDB 865664, "SAR Measurement Requirements for 100 MHz to 6 GHz"

### Methods Applied and Interpretation of Parameters:

- NORM<sub>x,y,z</sub>**: Assessed for E-field polarization  $\vartheta = 0$  ( $f \leq 900$  MHz in TEM-cell;  $f > 1800$  MHz: R22 waveguide). NORM<sub>x,y,z</sub> are only intermediate values, i.e., the uncertainties of NORM<sub>x,y,z</sub> does not affect the E<sup>2</sup>-field uncertainty inside TSL (see below *ConvF*).
- NORM(f)<sub>x,y,z</sub>** = NORM<sub>x,y,z</sub> \* *frequency\_response* (see Frequency Response Chart). This linearization is implemented in DASY4 software versions later than 4.2. The uncertainty of the frequency response is included in the stated uncertainty of *ConvF*.
- DCP<sub>x,y,z</sub>**: DCP are numerical linearization parameters assessed based on the data of power sweep with CW signal (no uncertainty required). DCP does not depend on frequency nor media.
- PAR**: PAR is the Peak to Average Ratio that is not calibrated but determined based on the signal characteristics
- A<sub>x,y,z</sub>; B<sub>x,y,z</sub>; C<sub>x,y,z</sub>; D<sub>x,y,z</sub>; VR<sub>x,y,z</sub>; A, B, C, D** are numerical linearization parameters assessed based on the data of power sweep for specific modulation signal. The parameters do not depend on frequency nor media. VR is the maximum calibration range expressed in RMS voltage across the diode.
- ConvF and Boundary Effect Parameters**: Assessed in flat phantom using E-field (or Temperature Transfer Standard for  $f \leq 800$  MHz) and inside waveguide using analytical field distributions based on power measurements for  $f > 800$  MHz. The same setups are used for assessment of the parameters applied for boundary compensation (alpha, depth) of which typical uncertainty values are given. These parameters are used in DASY4 software to improve probe accuracy close to the boundary. The sensitivity in TSL corresponds to NORM<sub>x,y,z</sub> \* *ConvF* whereby the uncertainty corresponds to that given for *ConvF*. A frequency dependent *ConvF* is used in DASY version 4.4 and higher which allows extending the validity from  $\pm 50$  MHz to  $\pm 100$  MHz.
- Spherical isotropy (3D deviation from isotropy)**: in a field of low gradients realized using a flat phantom exposed by a patch antenna.
- Sensor Offset**: The sensor offset corresponds to the offset of virtual measurement center from the probe tip (on probe axis). No tolerance required.
- Connector Angle**: The angle is assessed using the information gained by determining the NORM<sub>x</sub> (no uncertainty required).

# DASY/EASY - Parameters of Probe: EX3DV4 - SN:3662

## Basic Calibration Parameters

	Sensor X	Sensor Y	Sensor Z	Unc (k=2)
Norm ( $\mu\text{V}/(\text{V}/\text{m})^2$ ) <sup>A</sup>	0.42	0.49	0.48	$\pm 10.1 \%$
DCP (mV) <sup>B</sup>	99.8	99.6	98.2	

## Calibration Results for Modulation Response

UID	Communication System Name		A dB	B dB $\sqrt{\mu\text{V}}$	C	D dB	VR mV	Max dev.	Unc <sup>E</sup> (k=2)
0	CW	X	0.0	0.0	1.0	0.00	147.3	$\pm 2.7 \%$	$\pm 4.7 \%$
		Y	0.0	0.0	1.0		161.3		
		Z	0.0	0.0	1.0		168.0		

The reported uncertainty of measurement is stated as the standard uncertainty of measurement multiplied by the coverage factor  $k=2$ , which for a normal distribution corresponds to a coverage probability of approximately 95%.

<sup>A</sup> The uncertainties of Norm X,Y,Z do not affect the  $E^2$ -field uncertainty inside TSL (see Pages 5 and 6).

<sup>B</sup> Numerical linearization parameter: uncertainty not required.

<sup>E</sup> Uncertainty is determined using the max. deviation from linear response applying rectangular distribution and is expressed for the square of the field value.

## DASY/EASY - Parameters of Probe: EX3DV4 - SN:3662

### Other Probe Parameters

Sensor Arrangement	Triangular
Connector Angle (°)	-94.7
Mechanical Surface Detection Mode	enabled
Optical Surface Detection Mode	disabled
Probe Overall Length	337 mm
Probe Body Diameter	10 mm
Tip Length	9 mm
Tip Diameter	2.5 mm
Probe Tip to Sensor X Calibration Point	1 mm
Probe Tip to Sensor Y Calibration Point	1 mm
Probe Tip to Sensor Z Calibration Point	1 mm
Recommended Measurement Distance from Surface	1.4 mm

**Note:** Measurement distance from surface can be increased to 3-4 mm for an *Area Scan* job.

## DASY/EASY - Parameters of Probe: EX3DV4 - SN:3662

### Calibration Parameter Determined in Head Tissue Simulating Media

f (MHz) <sup>C</sup>	Relative Permittivity <sup>F</sup>	Conductivity (S/m) <sup>F</sup>	ConvF X	ConvF Y	ConvF Z	Alpha <sup>G</sup>	Depth <sup>G</sup> (mm)	Unc (k=2)
150	52.3	0.76	11.58	11.58	11.58	0.00	1.00	± 13.3 %
220	49.0	0.81	11.43	11.43	11.43	0.00	1.00	± 13.3 %
300	45.3	0.87	11.15	11.15	11.15	0.09	1.00	± 13.3 %
450	43.5	0.87	10.72	10.72	10.72	0.16	1.30	± 13.3 %
750	41.9	0.89	9.23	9.23	9.23	0.52	0.80	± 12.0 %
900	41.5	0.97	8.76	8.76	8.76	0.44	0.80	± 12.0 %
1450	40.5	1.20	8.18	8.18	8.18	0.37	0.80	± 12.0 %
1640	40.2	1.31	8.03	8.03	8.03	0.35	0.86	± 12.0 %
1750	40.1	1.37	7.87	7.87	7.87	0.32	0.86	± 12.0 %
1900	40.0	1.40	7.66	7.66	7.66	0.27	0.86	± 12.0 %
2300	39.5	1.67	7.54	7.54	7.54	0.34	0.90	± 12.0 %
2450	39.2	1.80	7.28	7.28	7.28	0.38	0.90	± 12.0 %
2600	39.0	1.96	7.10	7.10	7.10	0.38	0.90	± 12.0 %
3500	37.9	2.91	6.73	6.73	6.73	0.35	1.30	± 13.1 %
3700	37.7	3.12	6.53	6.53	6.53	0.35	1.30	± 13.1 %
5250	35.9	4.71	4.95	4.95	4.95	0.40	1.80	± 13.1 %
5600	35.5	5.07	4.66	4.66	4.66	0.40	1.80	± 13.1 %
5750	35.4	5.22	4.80	4.80	4.80	0.40	1.80	± 13.1 %

<sup>C</sup> Frequency validity above 300 MHz of ± 100 MHz only applies for DASY v4.4 and higher (see Page 2), else it is restricted to ± 50 MHz. The uncertainty is the RSS of the ConvF uncertainty at calibration frequency and the uncertainty for the indicated frequency band. Frequency validity below 300 MHz is ± 10, 25, 40, 50 and 70 MHz for ConvF assessments at 30, 64, 128, 150 and 220 MHz respectively. Validity of ConvF assessed at 6 MHz is 4-9 MHz, and ConvF assessed at 13 MHz is 9-19 MHz. Above 5 GHz frequency validity can be extended to ± 110 MHz.

<sup>F</sup> At frequencies below 3 GHz, the validity of tissue parameters ( $\epsilon$  and  $\sigma$ ) can be relaxed to ± 10% if liquid compensation formula is applied to measured SAR values. At frequencies above 3 GHz, the validity of tissue parameters ( $\epsilon$  and  $\sigma$ ) is restricted to ± 5%. The uncertainty is the RSS of the ConvF uncertainty for indicated target tissue parameters.

<sup>G</sup> Alpha/Depth are determined during calibration. SPEAG warrants that the remaining deviation due to the boundary effect after compensation is always less than ± 1% for frequencies below 3 GHz and below ± 2% for frequencies between 3-6 GHz at any distance larger than half the probe tip diameter from the boundary.

## DASY/EASY - Parameters of Probe: EX3DV4 - SN:3662

### Calibration Parameter Determined in Head Tissue Simulating Media

f (MHz) <sup>C</sup>	Relative Permittivity <sup>F</sup>	Conductivity (S/m) <sup>F</sup>	ConvF X	ConvF Y	ConvF Z	Alpha <sup>G</sup>	Depth <sup>G</sup> (mm)	Unc (k=2)
6500	34.5	6.07	5.50	5.50	5.50	0.20	2.00	± 18.6 %

<sup>C</sup> Frequency validity above 6GHz is ± 700 MHz. The uncertainty is the RSS of the ConvF uncertainty at calibration frequency and the uncertainty for the indicated frequency band.

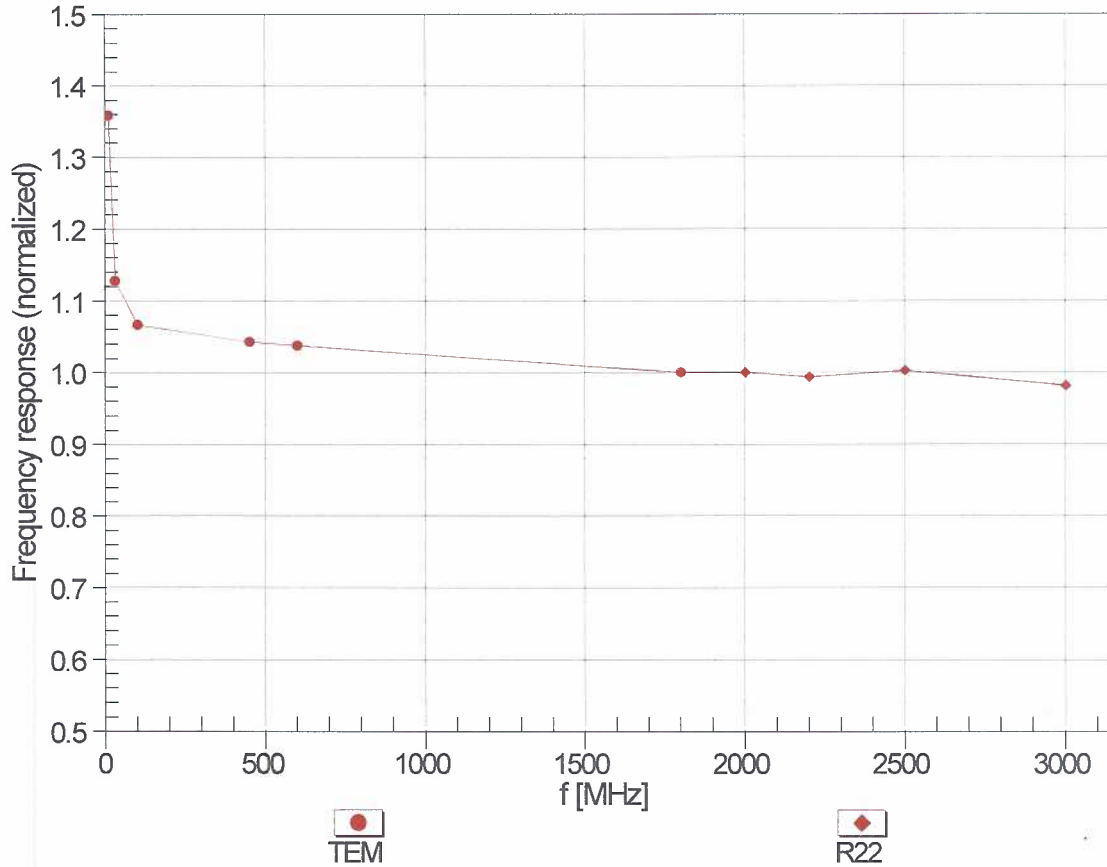
<sup>F</sup> At frequencies 6-10 GHz, the validity of tissue parameters ( $\epsilon$  and  $\sigma$ ) can be relaxed to ± 10% if liquid compensation formula is applied to measured SAR values. The uncertainty is the RSS of the ConvF uncertainty for indicated target tissue parameters.

<sup>G</sup> Alpha/Depth are determined during calibration. SPEAG warrants that the remaining deviation due to the boundary effect after compensation is always less than ± 1% for frequencies below 3 GHz; below ± 2% for frequencies between 3-6 GHz; and below ± 4% for frequencies between 6-10 GHz at any distance larger than half the probe tip diameter from the boundary.



# Frequency Response of E-Field

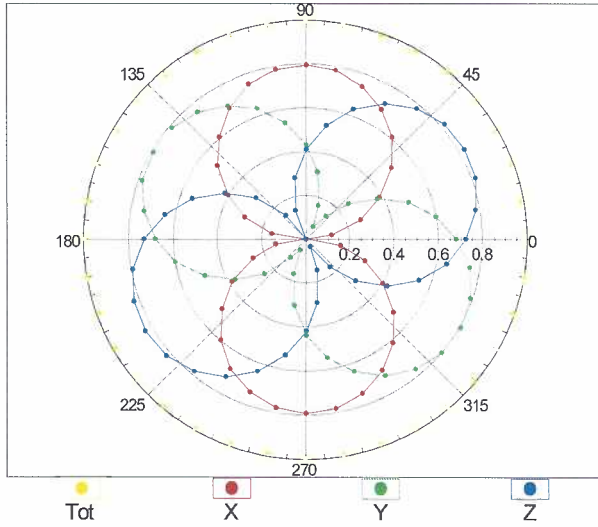
(TEM-Cell:ifi110 EXX, Waveguide: R22)



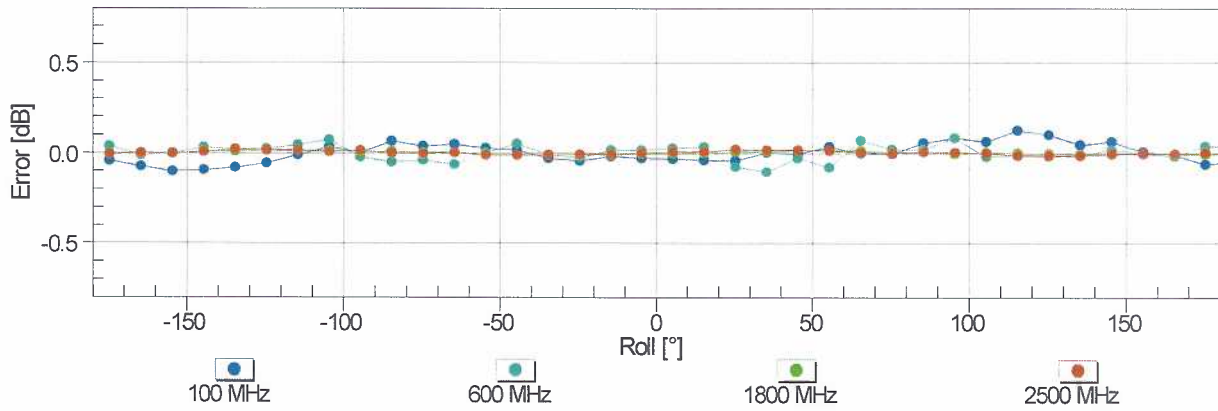
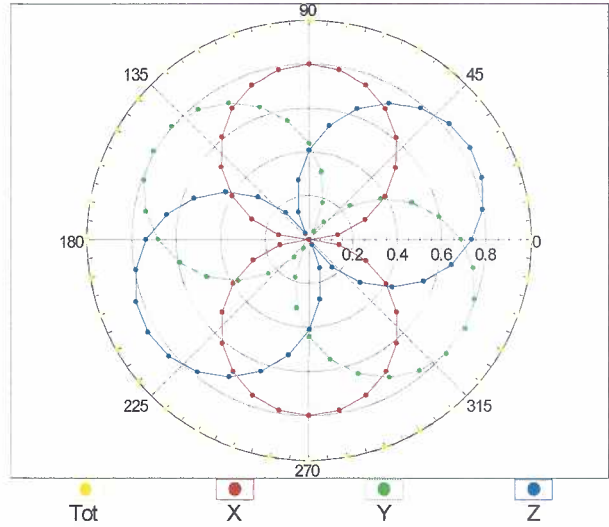
Uncertainty of Frequency Response of E-field:  $\pm 6.3\%$  (k=2)

### Receiving Pattern ( $\phi$ ), $\vartheta = 0^\circ$

f=600 MHz, TEM

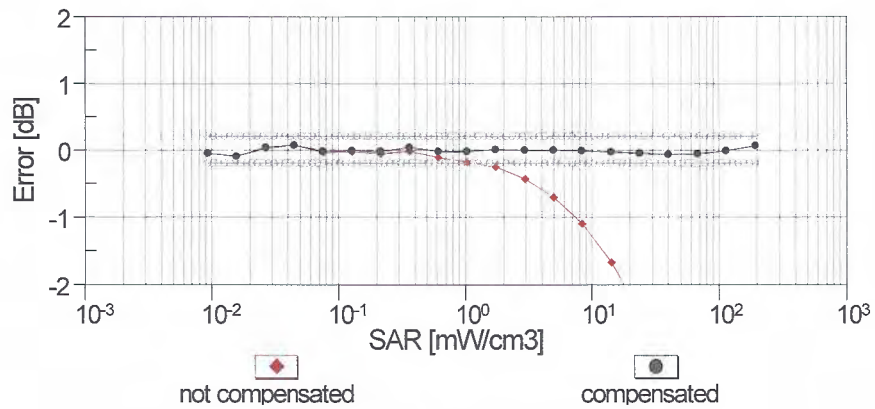
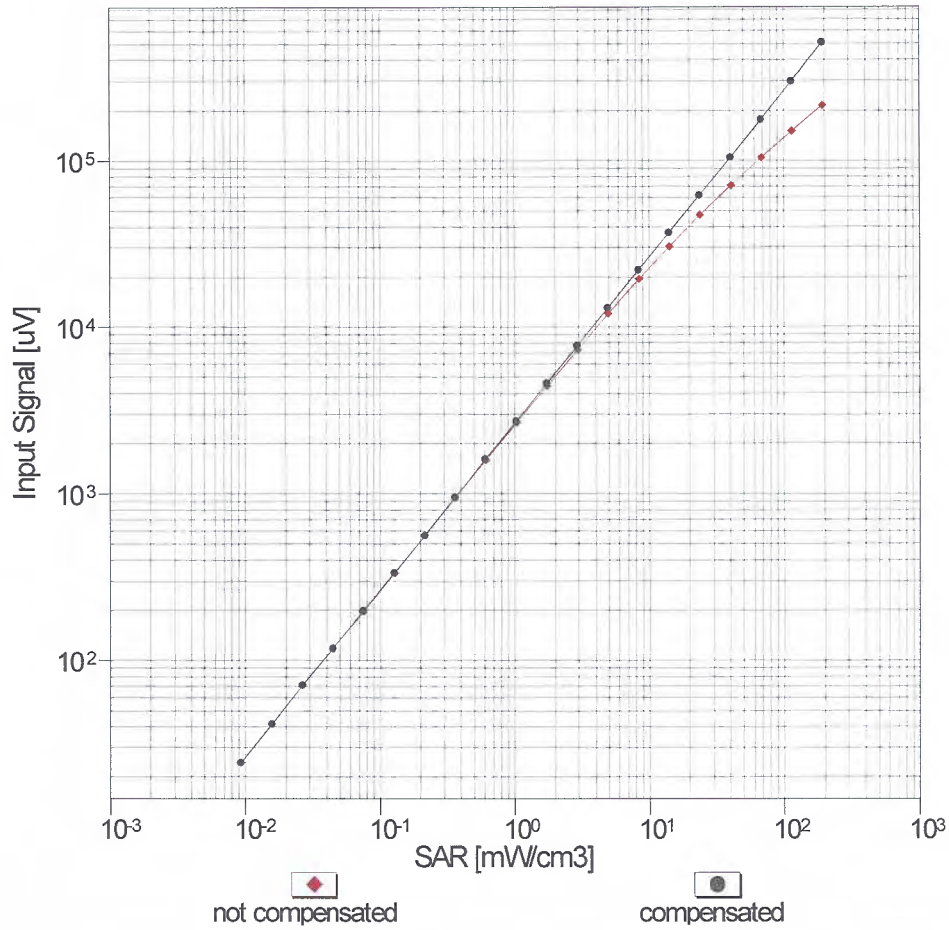


f=1800 MHz, R22



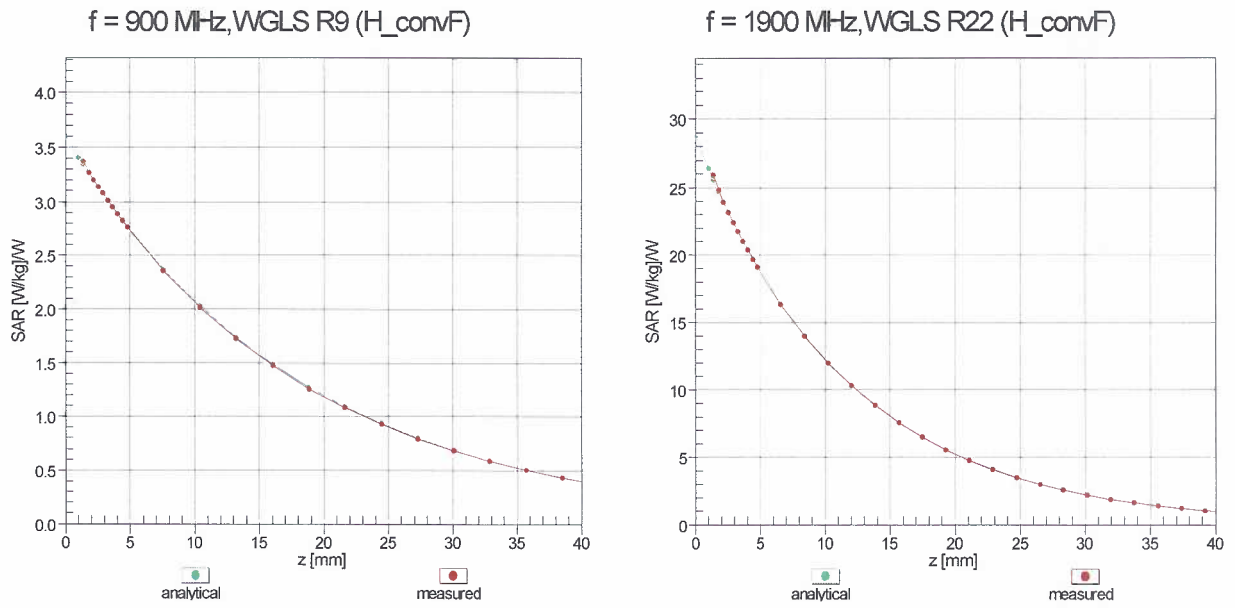
Uncertainty of Axial Isotropy Assessment:  $\pm 0.5\%$  (k=2)

## Dynamic Range $f(\text{SAR}_{\text{head}})$ (TEM cell , $f_{\text{eval}}= 1900 \text{ MHz}$ )

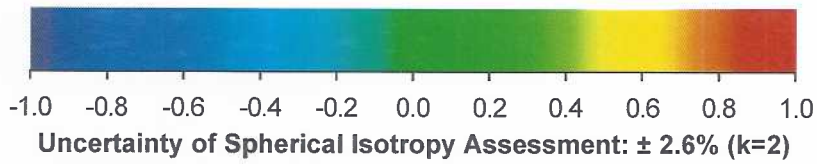
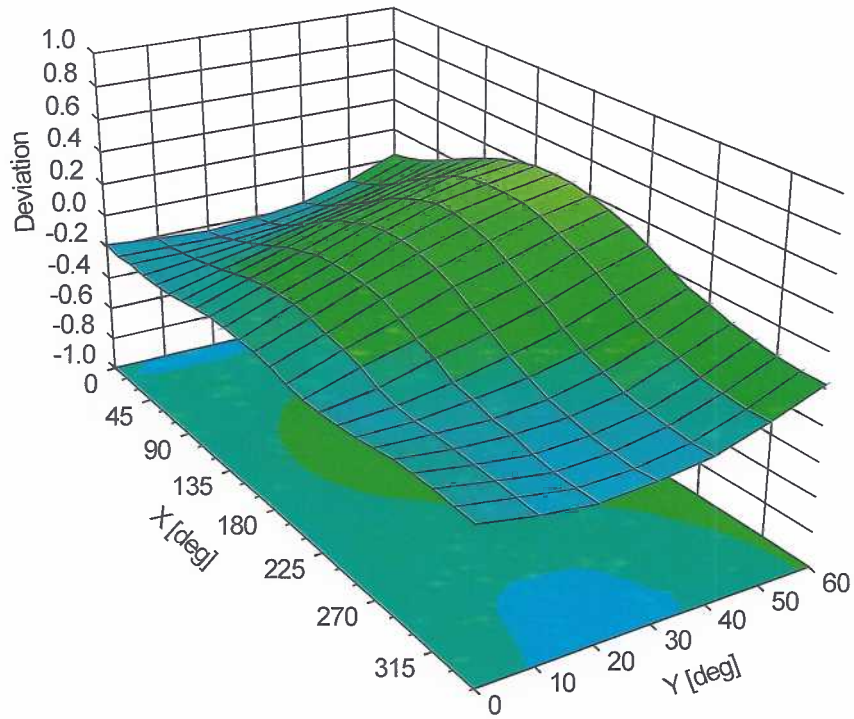


**Uncertainty of Linearity Assessment:  $\pm 0.6\%$  ( $k=2$ )**

# Conversion Factor Assessment



## Deviation from Isotropy in Liquid Error ( $\phi, \vartheta$ ), f = 900 MHz



## Appendix E – Dipole Calibration Data Sheets

*Jm*

**Calibration Laboratory of  
Schmid & Partner  
Engineering AG**  
Zeughausstrasse 43, 8004 Zurich, Switzerland



**S** Schweizerischer Kalibrierdienst  
**C** Service suisse d'étalonnage  
**S** Servizio svizzero di taratura  
**S** Swiss Calibration Service

Accredited by the Swiss Accreditation Service (SAS)  
**The Swiss Accreditation Service is one of the signatories to the EA  
Multilateral Agreement for the recognition of calibration certificates**

**Accreditation No.: SCS 0108**

Client **RF Exposure Lab**

Certificate No: **D2450V2-881\_Jun21**

## CALIBRATION CERTIFICATE

Object **D2450V2 - SN:881**

Calibration procedure(s) **QA CAL-05 v11  
Calibration Procedure for SAR Validation Sources between 0.7-3 GHz**

Calibration date: **June 03, 2021**

This calibration certificate documents the traceability to national standards, which realize the physical units of measurements (SI).  
The measurements and the uncertainties with confidence probability are given on the following pages and are part of the certificate.

All calibrations have been conducted in the closed laboratory facility: environment temperature (22 ± 3)°C and humidity < 70%.

Calibration Equipment used (M&TE critical for calibration)

Primary Standards	ID #	Cal Date (Certificate No.)	Scheduled Calibration
Power meter NRP	SN: 104778	09-Apr-21 (No. 217-03291/03292)	Apr-22
Power sensor NRP-Z91	SN: 103244	09-Apr-21 (No. 217-03291)	Apr-22
Power sensor NRP-Z91	SN: 103245	09-Apr-21 (No. 217-03292)	Apr-22
Reference 20 dB Attenuator	SN: BH9394 (20k)	09-Apr-21 (No. 217-03343)	Apr-22
Type-N mismatch combination	SN: 310982 / 06327	09-Apr-21 (No. 217-03344)	Apr-22
Reference Probe EX3DV4	SN: 7349	28-Dec-20 (No. EX3-7349_Dec20)	Dec-21
DAE4	SN: 601	02-Nov-20 (No. DAE4-601_Nov20)	Nov-21

Secondary Standards	ID #	Check Date (in house)	Scheduled Check
Power meter E4419B	SN: GB39512475	30-Oct-14 (in house check Oct-20)	In house check: Oct-22
Power sensor HP 8481A	SN: US37292783	07-Oct-15 (in house check Oct-20)	In house check: Oct-22
Power sensor HP 8481A	SN: MY41092317	07-Oct-15 (in house check Oct-20)	In house check: Oct-22
RF generator R&S SMT-06	SN: 100972	15-Jun-15 (in house check Oct-20)	In house check: Oct-22
Network Analyzer Agilent E8358A	SN: US41080477	31-Mar-14 (in house check Oct-20)	In house check: Oct-21

	Name	Function	Signature
Calibrated by:	Jeffrey Katzman	Laboratory Technician	<i>J. Katzman</i>

Approved by:	Katja Pokovic	Technical Manager	<i>K. Pokovic</i>
--------------	---------------	-------------------	-------------------

Issued: June 8, 2021

This calibration certificate shall not be reproduced except in full without written approval of the laboratory.



Accredited by the Swiss Accreditation Service (SAS)

The Swiss Accreditation Service is one of the signatories to the EA Multilateral Agreement for the recognition of calibration certificates

Accreditation No.: **SCS 0108**

### Glossary:

TSL	tissue simulating liquid
ConvF	sensitivity in TSL / NORM x,y,z
N/A	not applicable or not measured

### Calibration is Performed According to the Following Standards:

- IEEE Std 1528-2013, "IEEE Recommended Practice for Determining the Peak Spatial-Averaged Specific Absorption Rate (SAR) in the Human Head from Wireless Communications Devices: Measurement Techniques", June 2013
- IEC 62209-1, "Measurement procedure for the assessment of Specific Absorption Rate (SAR) from hand-held and body-mounted devices used next to the ear (frequency range of 300 MHz to 6 GHz)", July 2016
- IEC 62209-2, "Procedure to determine the Specific Absorption Rate (SAR) for wireless communication devices used in close proximity to the human body (frequency range of 30 MHz to 6 GHz)", March 2010
- KDB 865664, "SAR Measurement Requirements for 100 MHz to 6 GHz"

### Additional Documentation:

- DASY4/5 System Handbook

### Methods Applied and Interpretation of Parameters:

- Measurement Conditions:** Further details are available from the Validation Report at the end of the certificate. All figures stated in the certificate are valid at the frequency indicated.
- Antenna Parameters with TSL:** The dipole is mounted with the spacer to position its feed point exactly below the center marking of the flat phantom section, with the arms oriented parallel to the body axis.
- Feed Point Impedance and Return Loss:** These parameters are measured with the dipole positioned under the liquid filled phantom. The impedance stated is transformed from the measurement at the SMA connector to the feed point. The Return Loss ensures low reflected power. No uncertainty required.
- Electrical Delay:** One-way delay between the SMA connector and the antenna feed point. No uncertainty required.
- SAR measured:** SAR measured at the stated antenna input power.
- SAR normalized:** SAR as measured, normalized to an input power of 1 W at the antenna connector.
- SAR for nominal TSL parameters:** The measured TSL parameters are used to calculate the nominal SAR result.

The reported uncertainty of measurement is stated as the standard uncertainty of measurement multiplied by the coverage factor  $k=2$ , which for a normal distribution corresponds to a coverage probability of approximately 95%.

## Measurement Conditions

DASY system configuration, as far as not given on page 1.

<b>DASY Version</b>	DASY5	V52.10.4
<b>Extrapolation</b>	Advanced Extrapolation	
<b>Phantom</b>	Modular Flat Phantom	
<b>Distance Dipole Center - TSL</b>	10 mm	with Spacer
<b>Zoom Scan Resolution</b>	dx, dy, dz = 5 mm	
<b>Frequency</b>	2450 MHz ± 1 MHz	

## Head TSL parameters

The following parameters and calculations were applied.

	Temperature	Permittivity	Conductivity
<b>Nominal Head TSL parameters</b>	22.0 °C	39.2	1.80 mho/m
<b>Measured Head TSL parameters</b>	(22.0 ± 0.2) °C	37.7 ± 6 %	1.87 mho/m ± 6 %
<b>Head TSL temperature change during test</b>	< 0.5 °C	----	----

## SAR result with Head TSL

<b>SAR averaged over 1 cm<sup>3</sup> (1 g) of Head TSL</b>	Condition	
SAR measured	250 mW input power	13.9 W/kg
SAR for nominal Head TSL parameters	normalized to 1W	<b>54.1 W/kg ± 17.0 % (k=2)</b>

<b>SAR averaged over 10 cm<sup>3</sup> (10 g) of Head TSL</b>	condition	
SAR measured	250 mW input power	6.34 W/kg
SAR for nominal Head TSL parameters	normalized to 1W	<b>25.0 W/kg ± 16.5 % (k=2)</b>



## Appendix (Additional assessments outside the scope of SCS 0108)

### Antenna Parameters with Head TSL

Impedance, transformed to feed point	54.3 $\Omega$ + 4.3 j $\Omega$
Return Loss	- 24.7 dB

### General Antenna Parameters and Design

Electrical Delay (one direction)	1.156 ns
----------------------------------	----------

After long term use with 100W radiated power, only a slight warming of the dipole near the feedpoint can be measured.

The dipole is made of standard semirigid coaxial cable. The center conductor of the feeding line is directly connected to the second arm of the dipole. The antenna is therefore short-circuited for DC-signals. On some of the dipoles, small end caps are added to the dipole arms in order to improve matching when loaded according to the position as explained in the "Measurement Conditions" paragraph. The SAR data are not affected by this change. The overall dipole length is still according to the Standard.

No excessive force must be applied to the dipole arms, because they might bend or the soldered connections near the feedpoint may be damaged.

### Additional EUT Data

Manufactured by	SPEAG
-----------------	-------

## DASY5 Validation Report for Head TSL

Date: 03.06.2021

Test Laboratory: SPEAG, Zurich, Switzerland

**DUT: Dipole 2450 MHz; Type: D2450V2; Serial: D2450V2 - SN:881**

Communication System: UID 0 - CW; Frequency: 2450 MHz

Medium parameters used:  $f = 2450$  MHz;  $\sigma = 1.87$  S/m;  $\epsilon_r = 37.7$ ;  $\rho = 1000$  kg/m<sup>3</sup>

Phantom section: Flat Section

Measurement Standard: DASY5 (IEEE/IEC/ANSI C63.19-2011)

DASY52 Configuration:

- Probe: EX3DV4 - SN7349; ConvF(7.96, 7.96, 7.96) @ 2450 MHz; Calibrated: 28.12.2020
- Sensor-Surface: 1.4mm (Mechanical Surface Detection)
- Electronics: DAE4 Sn601; Calibrated: 02.11.2020
- Phantom: Flat Phantom 5.0 (front); Type: QD 000 P50 AA; Serial: 1001
- DASY52 52.10.4(1527); SEMCAD X 14.6.14(7483)

### Dipole Calibration for Head Tissue/Pin=250 mW, d=10mm/Zoom Scan (7x7x7)/Cube 0:

Measurement grid: dx=5mm, dy=5mm, dz=5mm

Reference Value = 119.0 V/m; Power Drift = 0.05 dB

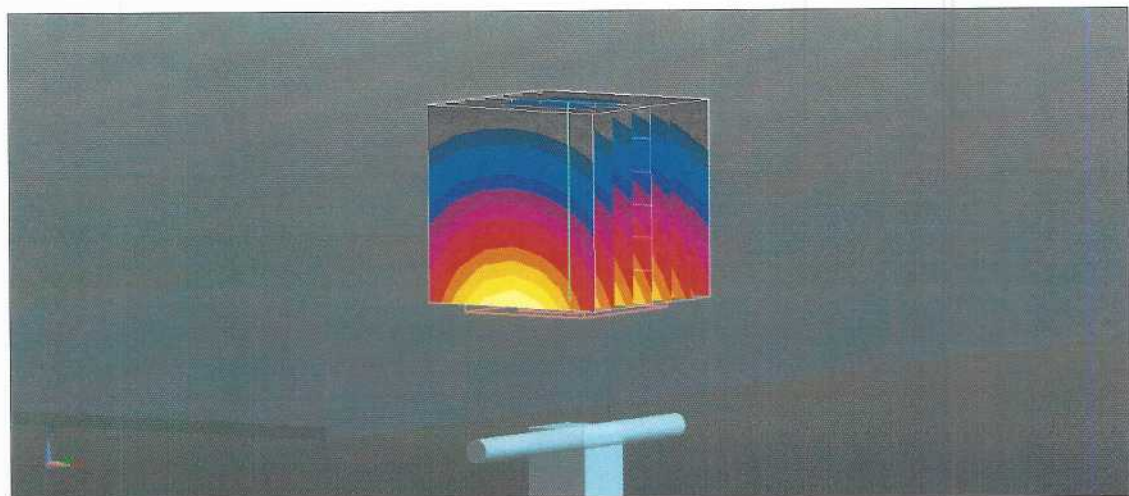
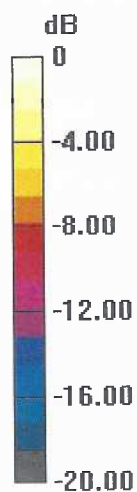
Peak SAR (extrapolated) = 28.0 W/kg

**SAR(1 g) = 13.9 W/kg; SAR(10 g) = 6.34 W/kg**

Smallest distance from peaks to all points 3 dB below = 9 mm

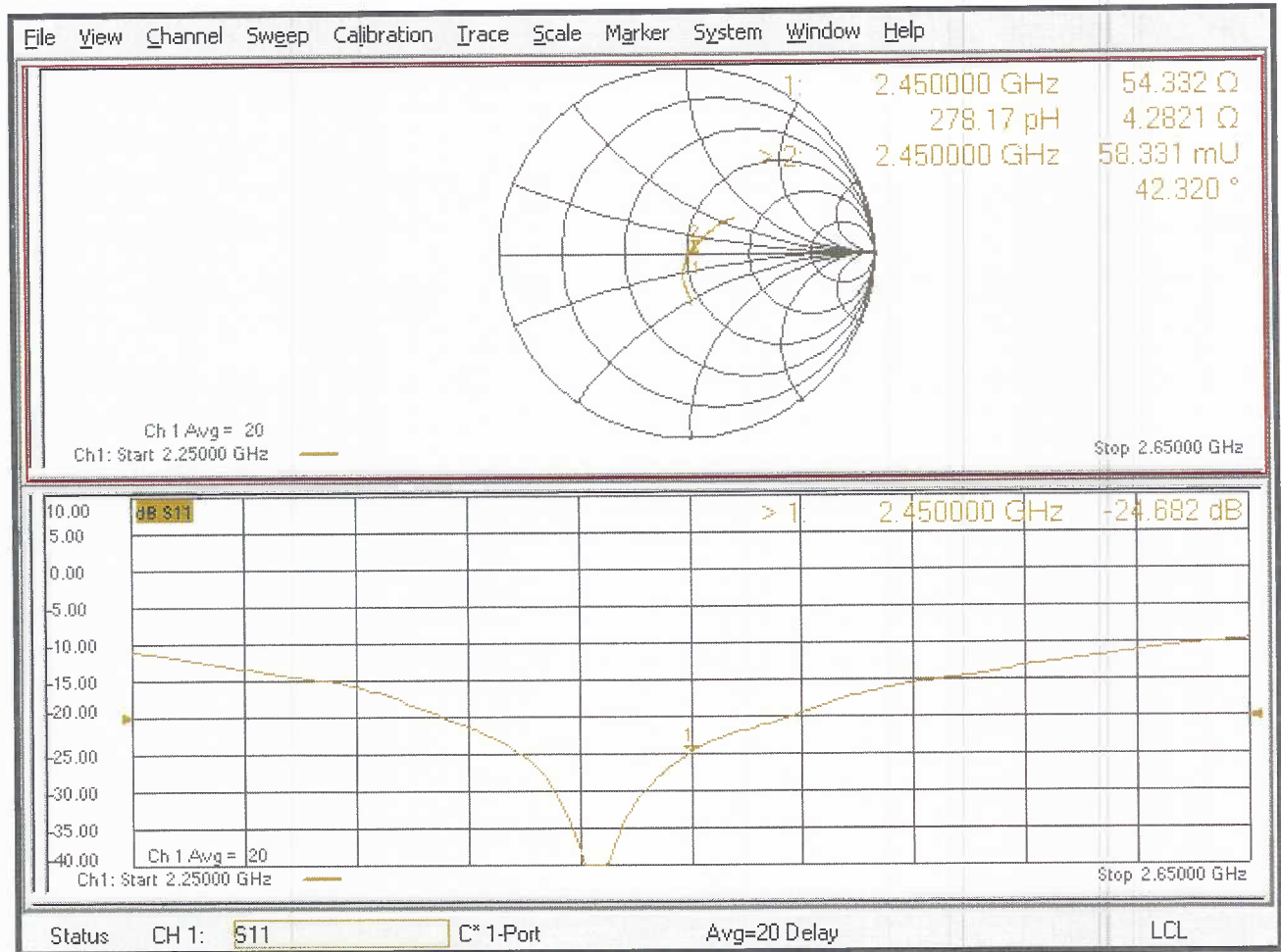
Ratio of SAR at M2 to SAR at M1 = 49.5%

Maximum value of SAR (measured) = 23.1 W/kg



0 dB = 23.1 W/kg = 13.64 dBW/kg

# Impedance Measurement Plot for Head TSL



*Jm*

**Calibration Laboratory of  
Schmid & Partner  
Engineering AG**  
Zeughausstrasse 43, 8004 Zurich, Switzerland



**S** Schweizerischer Kalibrierdienst  
**C** Service suisse d'étalonnage  
**S** Servizio svizzero di taratura  
**S** Swiss Calibration Service

Accredited by the Swiss Accreditation Service (SAS)  
**The Swiss Accreditation Service is one of the signatories to the EA  
Multilateral Agreement for the recognition of calibration certificates**

Accreditation No.: **SCS 0108**

Client **RF Exposure Lab**

Certificate No: **D5GHzV2-1119\_Jun21**

## CALIBRATION CERTIFICATE

Object **D5GHzV2 - SN:1119**

Calibration procedure(s) **QA CAL-22.v6  
Calibration Procedure for SAR Validation Sources between 3-10 GHz**

Calibration date: **June 08, 2021**

This calibration certificate documents the traceability to national standards, which realize the physical units of measurements (SI).  
The measurements and the uncertainties with confidence probability are given on the following pages and are part of the certificate.

All calibrations have been conducted in the closed laboratory facility: environment temperature (22 ± 3)°C and humidity < 70%.

Calibration Equipment used (M&TE critical for calibration)

Primary Standards	ID #	Cal Date (Certificate No.)	Scheduled Calibration
Power meter NRP	SN: 104778	09-Apr-21 (No. 217-03291/03292)	Apr-22
Power sensor NRP-Z91	SN: 103244	09-Apr-21 (No. 217-03291)	Apr-22
Power sensor NRP-Z91	SN: 103245	09-Apr-21 (No. 217-03292)	Apr-22
Reference 20 dB Attenuator	SN: BH9394 (20k)	09-Apr-21 (No. 217-03343)	Apr-22
Type-N mismatch combination	SN: 310982 / 06327	09-Apr-21 (No. 217-03344)	Apr-22
Reference Probe EX3DV4	SN: 3503	30-Dec-20 (No. EX3-3503_Dec20)	Dec-21
DAE4	SN: 601	02-Nov-20 (No. DAE4-601_Nov20)	Nov-21
Secondary Standards	ID #	Check Date (in house)	Scheduled Check
Power meter E4419B	SN: GB39512475	30-Oct-14 (in house check Oct-20)	In house check: Oct-22
Power sensor HP 8481A	SN: US37292783	07-Oct-15 (in house check Oct-20)	In house check: Oct-22
Power sensor HP 8481A	SN: MY41092317	07-Oct-15 (in house check Oct-20)	In house check: Oct-22
RF generator R&S SMT-06	SN: 100972	15-Jun-15 (in house check Oct-20)	In house check: Oct-22
Network Analyzer Agilent E8358A	SN: US41080477	31-Mar-14 (in house check Oct-20)	In house check: Oct-21

Calibrated by: **Michael Weber**      Name: Michael Weber      Function: Laboratory Technician

Signature: *M. Weber*

Approved by: **Katja Pokovic**      Name: Katja Pokovic      Function: Technical Manager

Signature: *Katja Pokovic*

Issued: June 8, 2021

This calibration certificate shall not be reproduced except in full without written approval of the laboratory.



Accredited by the Swiss Accreditation Service (SAS)

The Swiss Accreditation Service is one of the signatories to the EA Multilateral Agreement for the recognition of calibration certificates

Accreditation No.: **SCS 0108**

### Glossary:

TSL	tissue simulating liquid
ConvF	sensitivity in TSL / NORM x,y,z
N/A	not applicable or not measured

### Calibration is Performed According to the Following Standards:

- IEEE Std 1528-2013, "IEEE Recommended Practice for Determining the Peak Spatial-Averaged Specific Absorption Rate (SAR) in the Human Head from Wireless Communications Devices: Measurement Techniques", June 2013
- IEC 62209-1, "Measurement procedure for the assessment of Specific Absorption Rate (SAR) from hand-held and body-mounted devices used next to the ear (frequency range of 300 MHz to 6 GHz)", July 2016
- IEC 62209-2, "Procedure to determine the Specific Absorption Rate (SAR) for wireless communication devices used in close proximity to the human body (frequency range of 30 MHz to 6 GHz)", March 2010
- KDB 865664, "SAR Measurement Requirements for 100 MHz to 6 GHz"

### Additional Documentation:

- DASY4/5 System Handbook

### Methods Applied and Interpretation of Parameters:

- Measurement Conditions:** Further details are available from the Validation Report at the end of the certificate. All figures stated in the certificate are valid at the frequency indicated.
- Antenna Parameters with TSL:** The dipole is mounted with the spacer to position its feed point exactly below the center marking of the flat phantom section, with the arms oriented parallel to the body axis.
- Feed Point Impedance and Return Loss:** These parameters are measured with the dipole positioned under the liquid filled phantom. The impedance stated is transformed from the measurement at the SMA connector to the feed point. The Return Loss ensures low reflected power. No uncertainty required.
- Electrical Delay:** One-way delay between the SMA connector and the antenna feed point. No uncertainty required.
- SAR measured:** SAR measured at the stated antenna input power.
- SAR normalized:** SAR as measured, normalized to an input power of 1 W at the antenna connector.
- SAR for nominal TSL parameters:** The measured TSL parameters are used to calculate the nominal SAR result.

The reported uncertainty of measurement is stated as the standard uncertainty of measurement multiplied by the coverage factor  $k=2$ , which for a normal distribution corresponds to a coverage probability of approximately 95%.

## Measurement Conditions

DASY system configuration, as far as not given on page 1.

<b>DASY Version</b>	DASY5	V52.10.4
<b>Extrapolation</b>	Advanced Extrapolation	
<b>Phantom</b>	Modular Flat Phantom V5.0	
<b>Distance Dipole Center - TSL</b>	10 mm	with Spacer
<b>Zoom Scan Resolution</b>	dx, dy = 4.0 mm, dz = 1.4 mm	Graded Ratio = 1.4 (Z direction)
<b>Frequency</b>	5250 MHz ± 1 MHz 5600 MHz ± 1 MHz 5750 MHz ± 1 MHz	

## Head TSL parameters at 5250 MHz

The following parameters and calculations were applied.

	Temperature	Permittivity	Conductivity
<b>Nominal Head TSL parameters</b>	22.0 °C	35.9	4.71 mho/m
<b>Measured Head TSL parameters</b>	(22.0 ± 0.2) °C	34.6 ± 6 %	4.59 mho/m ± 6 %
<b>Head TSL temperature change during test</b>	< 0.5 °C	---	---

## SAR result with Head TSL at 5250 MHz

<b>SAR averaged over 1 cm<sup>3</sup> (1 g) of Head TSL</b>	Condition	
SAR measured	100 mW input power	8.02 W/kg
SAR for nominal Head TSL parameters	normalized to 1W	<b>79.5 W/kg ± 19.9 % (k=2)</b>

<b>SAR averaged over 10 cm<sup>3</sup> (10 g) of Head TSL</b>	condition	
SAR measured	100 mW input power	2.32 W/kg
SAR for nominal Head TSL parameters	normalized to 1W	<b>22.9 W/kg ± 19.5 % (k=2)</b>

## Head TSL parameters at 5600 MHz

The following parameters and calculations were applied.

	Temperature	Permittivity	Conductivity
<b>Nominal Head TSL parameters</b>	22.0 °C	35.5	5.07 mho/m
<b>Measured Head TSL parameters</b>	(22.0 ± 0.2) °C	34.1 ± 6 %	4.95 mho/m ± 6 %
<b>Head TSL temperature change during test</b>	< 0.5 °C	---	---

## SAR result with Head TSL at 5600 MHz

<b>SAR averaged over 1 cm<sup>3</sup> (1 g) of Head TSL</b>	Condition	
SAR measured	100 mW input power	8.40 W/kg
SAR for nominal Head TSL parameters	normalized to 1W	<b>83.2 W/kg ± 19.9 % (k=2)</b>

<b>SAR averaged over 10 cm<sup>3</sup> (10 g) of Head TSL</b>	condition	
SAR measured	100 mW input power	2.41 W/kg
SAR for nominal Head TSL parameters	normalized to 1W	<b>23.8 W/kg ± 19.5 % (k=2)</b>

## Head TSL parameters at 5750 MHz

The following parameters and calculations were applied.

	Temperature	Permittivity	Conductivity
Nominal Head TSL parameters	22.0 °C	35.4	5.22 mho/m
Measured Head TSL parameters	(22.0 ± 0.2) °C	33.9 ± 6 %	5.10 mho/m ± 6 %
Head TSL temperature change during test	< 0.5 °C	----	----

## SAR result with Head TSL at 5750 MHz

SAR averaged over 1 cm <sup>3</sup> (1 g) of Head TSL	Condition	
SAR measured	100 mW input power	8.13 W/kg
SAR for nominal Head TSL parameters	normalized to 1W	<b>80.5 W/kg ± 19.9 % (k=2)</b>

SAR averaged over 10 cm <sup>3</sup> (10 g) of Head TSL	condition	
SAR measured	100 mW input power	2.33 W/kg
SAR for nominal Head TSL parameters	normalized to 1W	<b>23.0 W/kg ± 19.5 % (k=2)</b>

## Appendix (Additional assessments outside the scope of SCS 0108)

### Antenna Parameters with Head TSL at 5250 MHz

Impedance, transformed to feed point	51.9 $\Omega$ - 7.3 j $\Omega$
Return Loss	- 22.6 dB

### Antenna Parameters with Head TSL at 5600 MHz

Impedance, transformed to feed point	56.8 $\Omega$ - 1.3 j $\Omega$
Return Loss	- 23.8 dB

### Antenna Parameters with Head TSL at 5750 MHz

Impedance, transformed to feed point	56.9 $\Omega$ - 1.8 j $\Omega$
Return Loss	- 23.5 dB

### General Antenna Parameters and Design

Electrical Delay (one direction)	1.206 ns
----------------------------------	----------

After long term use with 100W radiated power, only a slight warming of the dipole near the feedpoint can be measured.

The dipole is made of standard semirigid coaxial cable. The center conductor of the feeding line is directly connected to the second arm of the dipole. The antenna is therefore short-circuited for DC-signals. On some of the dipoles, small end caps are added to the dipole arms in order to improve matching when loaded according to the position as explained in the "Measurement Conditions" paragraph. The SAR data are not affected by this change. The overall dipole length is still according to the Standard.

No excessive force must be applied to the dipole arms, because they might bend or the soldered connections near the feedpoint may be damaged.

### Additional EUT Data

Manufactured by	SPEAG
-----------------	-------



## DASY5 Validation Report for Head TSL

Date: 08.06.2021

Test Laboratory: SPEAG, Zurich, Switzerland

**DUT: Dipole D5GHzV2; Type: D5GHzV2; Serial: D5GHzV2 - SN:1119**

Communication System: UID 0 - CW; Frequency: 5250 MHz, Frequency: 5600 MHz, Frequency: 5750 MHz

Medium parameters used:  $f = 5250$  MHz;  $\sigma = 4.59$  S/m;  $\epsilon_r = 34.6$ ;  $\rho = 1000$  kg/m<sup>3</sup>,

Medium parameters used:  $f = 5600$  MHz;  $\sigma = 4.95$  S/m;  $\epsilon_r = 34.1$ ;  $\rho = 1000$  kg/m<sup>3</sup>,

Medium parameters used:  $f = 5750$  MHz;  $\sigma = 5.1$  S/m;  $\epsilon_r = 33.9$ ;  $\rho = 1000$  kg/m<sup>3</sup>

Phantom section: Flat Section

Measurement Standard: DASY5 (IEEE/IEC/ANSI C63.19-2011)

DASY52 Configuration:

- Probe: EX3DV4 - SN3503; ConvF(5.5, 5.5, 5.5) @ 5250 MHz, ConvF(5.1, 5.1, 5.1) @ 5600 MHz, ConvF(5.08, 5.08, 5.08) @ 5750 MHz; Calibrated: 30.12.2020
- Sensor-Surface: 1.4mm (Mechanical Surface Detection)
- Electronics: DAE4 Sn601; Calibrated: 02.11.2020
- Phantom: Flat Phantom 5.0 (front); Type: QD 000 P50 AA; Serial: 1001
- DASY52 52.10.4(1527); SEMCAD X 14.6.14(7483)

**Dipole Calibration for Head Tissue/Pin=100mW, dist=10mm, f=5250 MHz/Zoom Scan, dist=1.4mm (8x8x7)/Cube 0:** Measurement grid: dx=4mm, dy=4mm, dz=1.4mm

Reference Value = 76.83 V/m; Power Drift = 0.07 dB

Peak SAR (extrapolated) = 27.1 W/kg

**SAR(1 g) = 8.02 W/kg; SAR(10 g) = 2.32 W/kg**

Smallest distance from peaks to all points 3 dB below = 7.2 mm

Ratio of SAR at M2 to SAR at M1 = 70.7%

Maximum value of SAR (measured) = 17.7 W/kg

**Dipole Calibration for Head Tissue/Pin=100mW, dist=10mm, f=5600 MHz/Zoom Scan, dist=1.4mm (8x8x7)/Cube 0:** Measurement grid: dx=4mm, dy=4mm, dz=1.4mm

Reference Value = 76.09 V/m; Power Drift = 0.05 dB

Peak SAR (extrapolated) = 30.6 W/kg

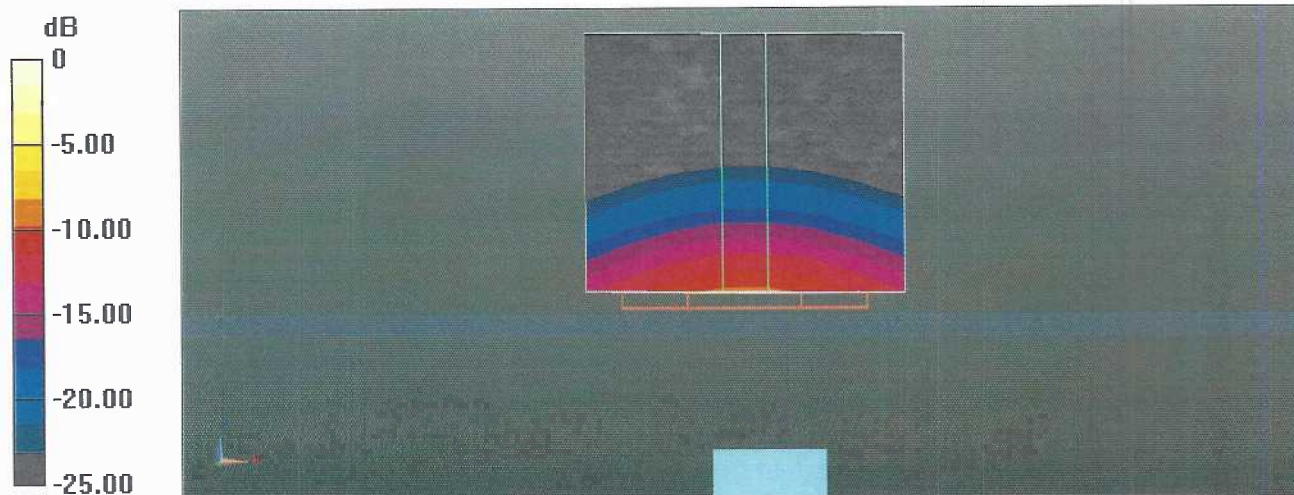
**SAR(1 g) = 8.4 W/kg; SAR(10 g) = 2.41 W/kg**

Smallest distance from peaks to all points 3 dB below = 7.5 mm

Ratio of SAR at M2 to SAR at M1 = 68.4%

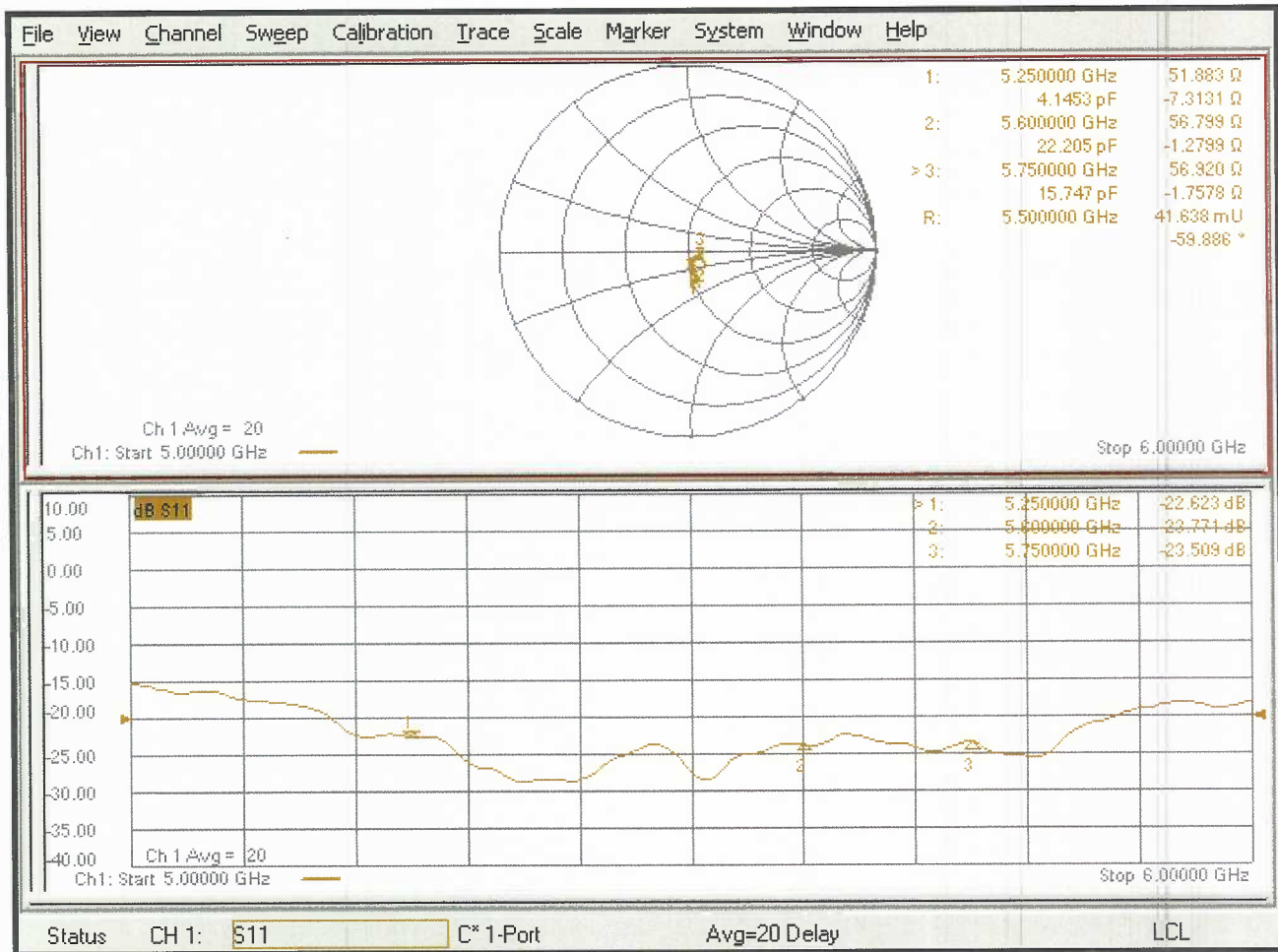
Maximum value of SAR (measured) = 19.1 W/kg

**Dipole Calibration for Head Tissue/Pin=100mW, dist=10mm, f=5750 MHz/Zoom Scan,  
dist=1.4mm (8x8x7)/Cube 0: Measurement grid: dx=4mm, dy=4mm, dz=1.4mm**  
Reference Value = 75.64 V/m; Power Drift = 0.02 dB  
Peak SAR (extrapolated) = 31.8 W/kg  
**SAR(1 g) = 8.13 W/kg; SAR(10 g) = 2.33 W/kg**  
Smallest distance from peaks to all points 3 dB below = 7.4 mm  
Ratio of SAR at M2 to SAR at M1 = 65.4%  
Maximum value of SAR (measured) = 19.3 W/kg



0 dB = 19.3 W/kg = 12.86 dBW/kg

# Impedance Measurement Plot for Head TSL



## Appendix F – Phantom Calibration Data Sheets

**Certificate of Conformity / First Article Inspection**

Item	Oval Flat Phantom ELI 4.0
Type No	QD OVA 001 B
Series No	1003 and higher
Manufacturer	Untersee Composites Knebelstrasse 8 CH-8268 Mannenbach, Switzerland

**Tests**

Complete tests were made on the prototype units QD OVA 001 AA 1001, QD OVA 001 AB 1002, pre-series units QD OVA 001 BA 1003-1005 as well as on the series units QD OVA 001 BB, 1006 ff.

Test	Requirement	Details	Units tested
Material thickness	Compliant with the standard requirements	Bottom plate: 2.0mm +/- 0.2mm	all
Material parameters	Dielectric parameters for required frequencies	< 6 GHz: Rel. permittivity = 4 +/-1, Loss tangent ≤ 0.05	Material sample
Material resistivity	The material has been tested to be compatible with the liquids defined in the standards if handled and cleaned according to the instructions.	DGBE based simulating liquids. Observe Technical Note for material compatibility.	Equivalent phantoms, Material sample
Shape	Thickness of bottom material, Internal dimensions, Sagging compatible with standards from minimum frequency	Bottom elliptical 600 x 400 mm Depth 190 mm, Shape is within tolerance for filling height up to 155 mm, Eventual sagging is reduced or eliminated by support via DUT	Prototypes, Sample testing

**Standards**

- [1] CENELEC EN 50361-2001, « Basic standard for the measurement of the Specific Absorption Rate related to human exposure to electromagnetic fields from mobile phones (300 MHz – 3 GHz) », July 2001
- [2] IEEE 1528-2003, "Recommended Practice for Determining the Peak Spatial-Average Specific Absorption Rate (SAR) in the Human Head from Wireless Communications Devices: Measurement Techniques, December 2003
- [3] IEC 62209 – 1, "Specific Absorption Rate (SAR) in the frequency range of 300 MHz to 3 GHz – Measurement Procedure, Part 1: Hand-held mobile wireless communication devices", February 2005
- [4] IEC 62209 – 2, Draft, "Human Exposure to Radio Frequency Fields from Handheld and Body-Mounted Wireless Communication Devices – Human models, Instrumentation and Procedures – Part 2: Procedure to determine the Specific Absorption Rate (SAR) in the head and body for 30 MHz to 6 GHz Handheld and Body-Mounted Devices used in close proximity to the Body.", February 2005
- [5] OET Bulletin 65, Supplement C, "Evaluating Compliance with FCC Guidelines for Human Exposure to Radiofrequency Electromagnetic Fields", Edition January 2001

Based on the tests above, we certify that this item is in compliance with the standards [1] to [5] if operated according to the specific requirements and considering the thickness. The dimensions are fully compliant with [4] from 30 MHz to 6 GHz. For the other standards, the minimum lower frequency limit is limited due to the dimensional requirements ([1]: 450 MHz, [2]: 300 MHz, [3]: 800 MHz, [5]: 375 MHz) and possibly further by the dimensions of the DUT.

Date 28.4.2008 Signature / Stamp

**s p e a g**  
Schmid & Partner Engineering AG  
Zeughausstrasse 43, 8004 Zurich, Switzerland  
Phone +41 44 245 9700, Fax +41 44 245 9779  
info@speag.com; http://www.speag.com

## Appendix G – Validation Summary

Per FCC KDB 865664 D02 v01r02, SAR system validation status should be documented to confirm measurement accuracy. The SAR systems (including SAR probes, system components and software versions) used for this device were validated against its performance specifications prior to the SAR measurements. Reference dipoles were used with the required tissue equivalent media for system validation according to the procedures outlined in FCC KDB 865664 D01 v01r04 and IEEE 1528-2013. Since SAR probe calibrations are frequency dependent, each probe calibration point was validated at a frequency within the valid frequency range of the probe calibration point using the system that normally operates with the probe for routine SAR measurements and according to the required tissue equivalent media.

A tabulated summary of the system validation status including the validation date(s), measurement frequencies, SAR probes and tissue dielectric parameters has been included.

**Table G-1**  
**SAR System Validation Summary**

SAR System #	Freq. (MHz)	Date	Probe S/N	Probe Type	Probe Cal. Point	Cond. ( $\sigma$ )	Perm. ( $\epsilon_r$ )	CW Validation			Modulation Validation			
								Sensitivity	Probe Linearity	Probe Isotropy	Modulation Type	Duty Factor	PAR	
3	2450	03/07/2022	3662	EX3DV4	2450	Head	1.81	38.34	Pass	Pass	Pass	DSSS	Pass	Pass
3	5250	03/07/2022	3662	EX3DV4	5250	Head	4.73	34.77	Pass	Pass	Pass	OFDM/TDD	Pass	Pass
2	5600	03/08/2021	3662	EX3DV4	5600	Head	5.11	34.35	Pass	Pass	Pass	OFDM/TDD	Pass	Pass
2	5750	03/08/2021	3662	EX3DV4	5750	Head	5.28	34.18	Pass	Pass	Pass	OFDM/TDD	Pass	Pass