

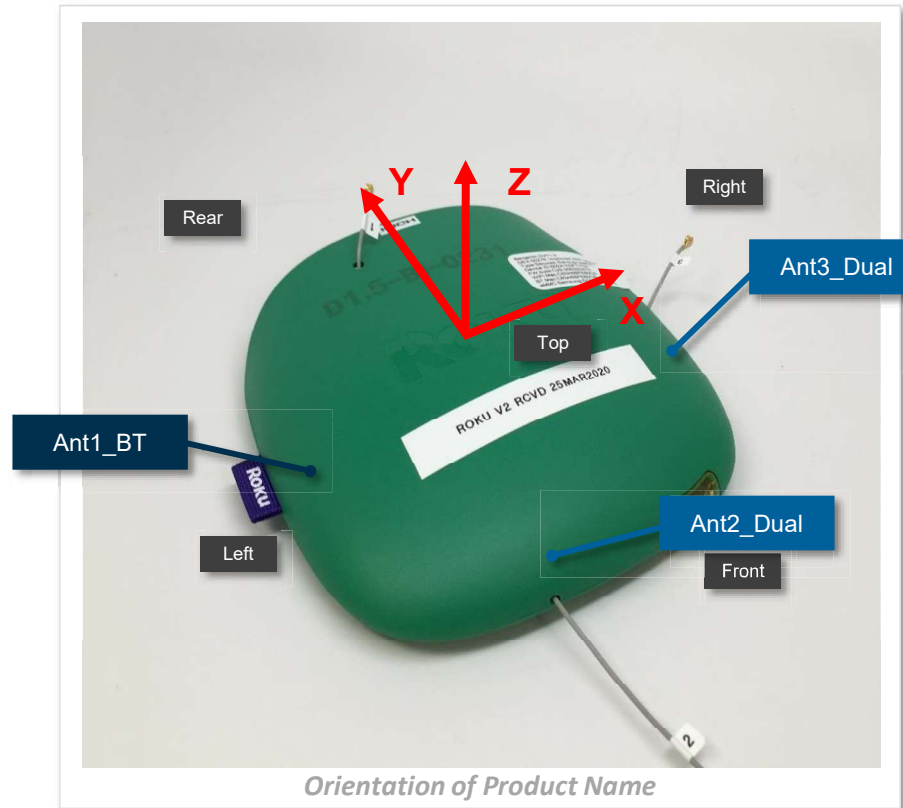
Antenna Peak Gain – 2.4 GHz Wi-Fi Antennas

Frequency (MHz)	Ant2_Dual	Ant3_Dual
2400	3.6	2.2
2410	3.5	2.2
2420	3.5	2.4
2430	3.6	2.4
2440	3.6	2.4
2450	3.6	2.3
2460	3.6	2.2
2470	3.8	2.1
2480	3.9	1.9
2490	3.9	1.7

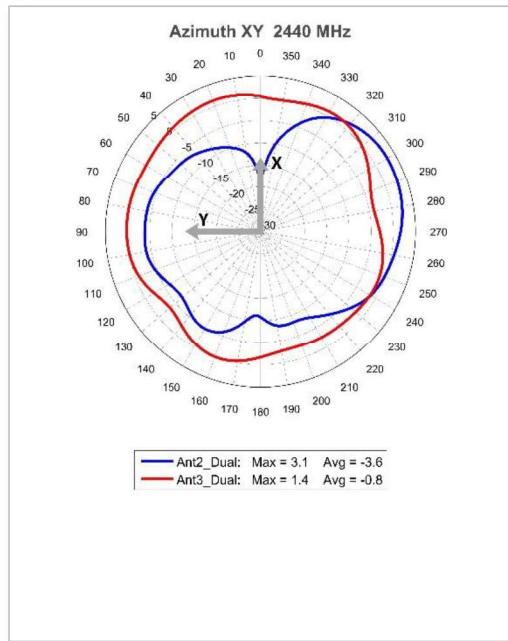
Frequency (MHz)	Ant2_Dual	Ant3_Dual
5150	4.2	3.8
5200	4.4	4.2
5300	4.5	4.4
5400	4.5	4.5
5500	4.4	4.5
5600	4.3	3.9
5700	4.2	4.3
5800	4.2	5
5850	3.9	4.7



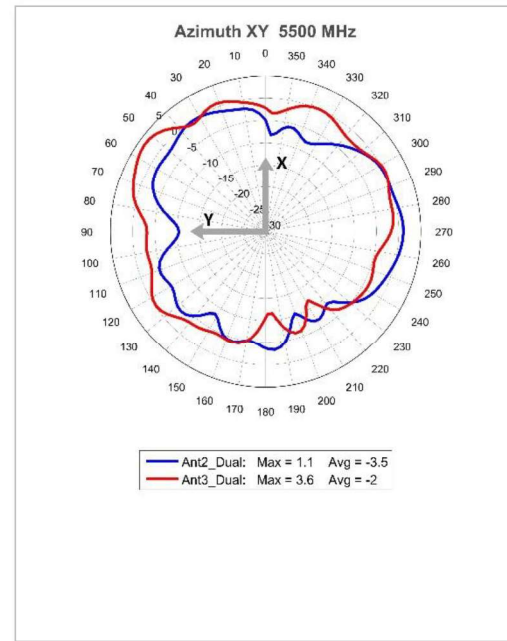
Coordinate System for Radiation Patterns



System Coverage: Azimuth at 2.44 GHz & 5.5 GHz



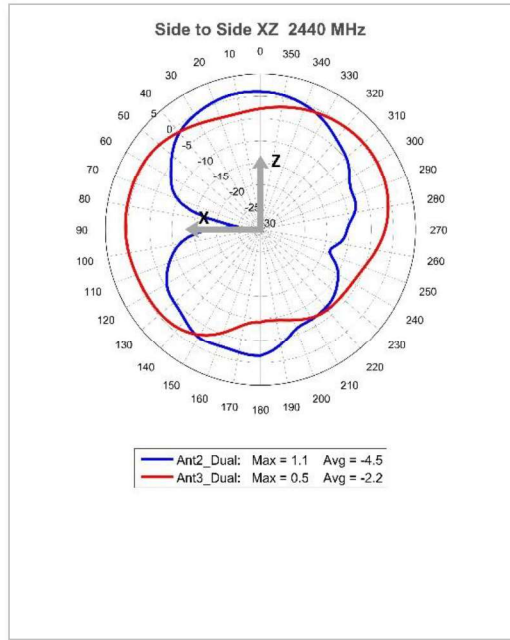
Dual-band Antennas @ 2.44 GHz



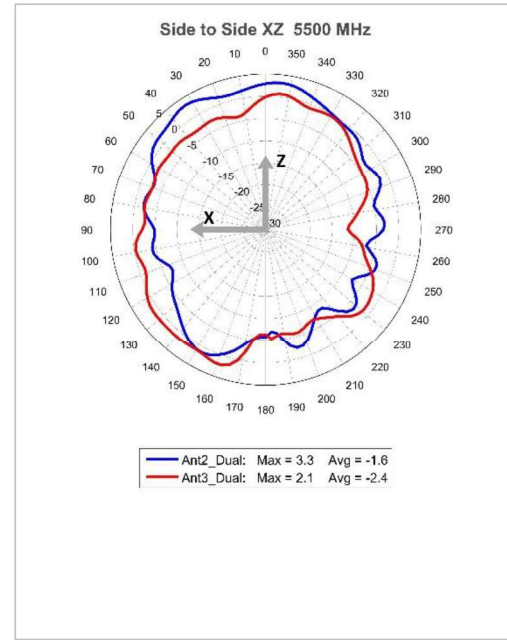
Dual-band Antennas @ 5.5 GHz



System Coverage: Side to Side Elevation at 2.44 GHz & 5.5 GHz



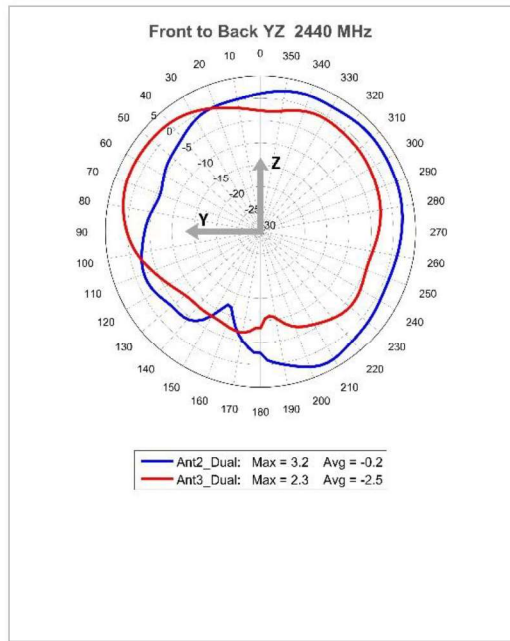
Dual-band Antennas @ 2.44 GHz



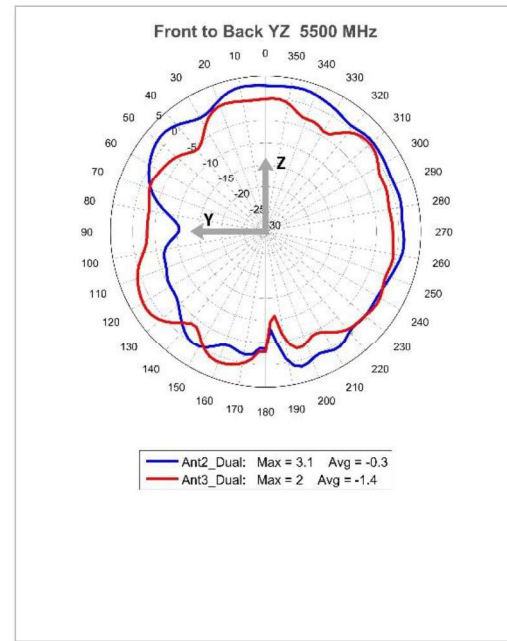
Dual-band Antennas @ 5.5 GHz



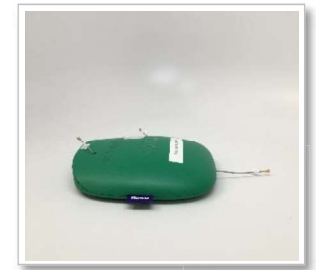
System Coverage: Front to Back Elevation at 2.44 GHz & 5.5 GHz



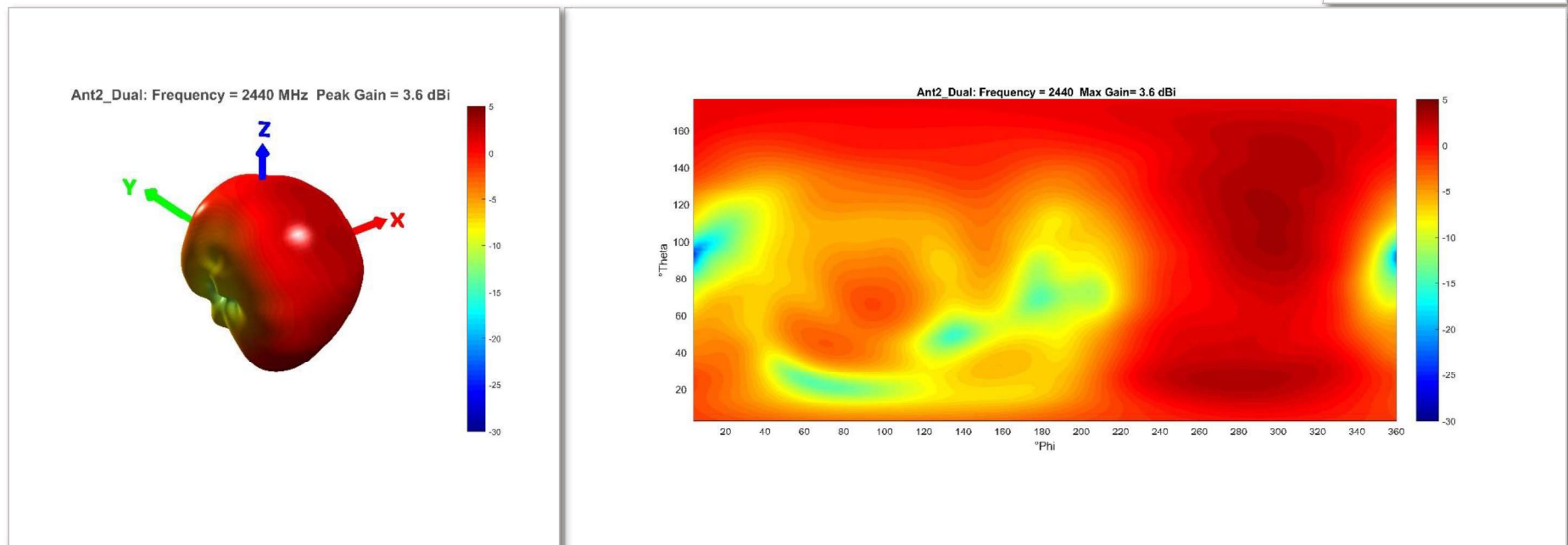
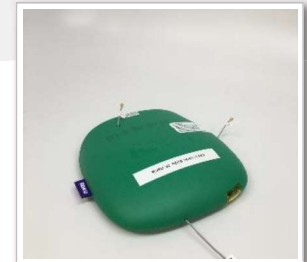
Dual-band Antennas @ 2.44 GHz



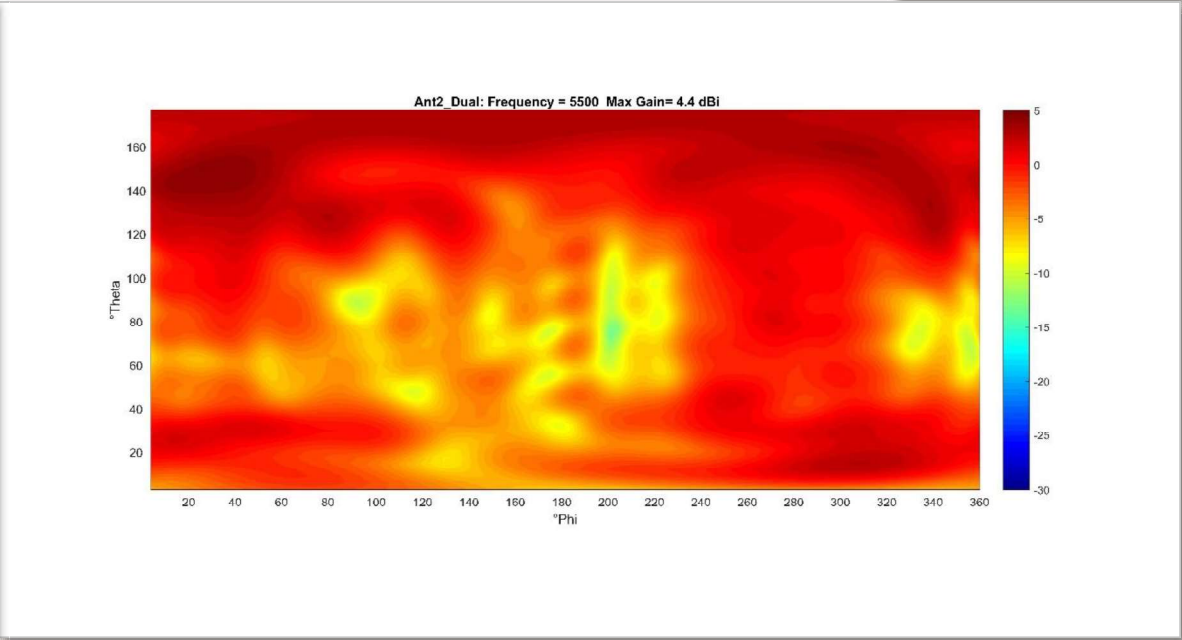
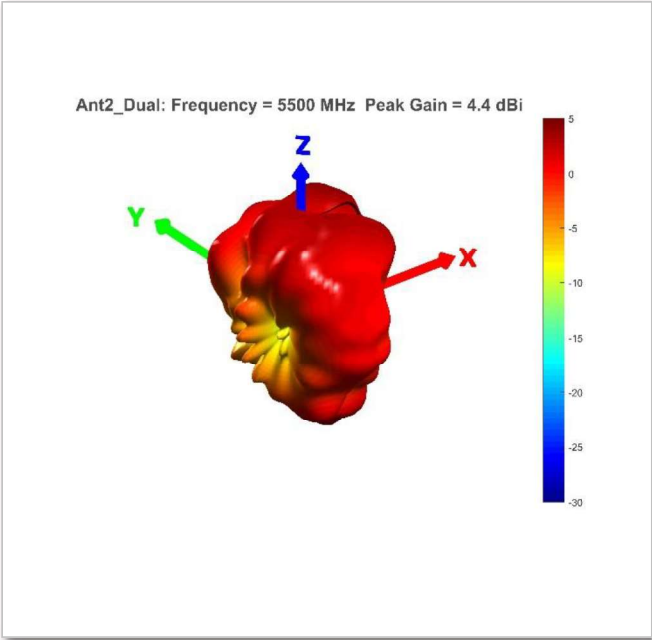
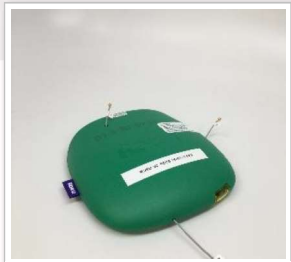
Dual-band Antennas @ 5.5 GHz



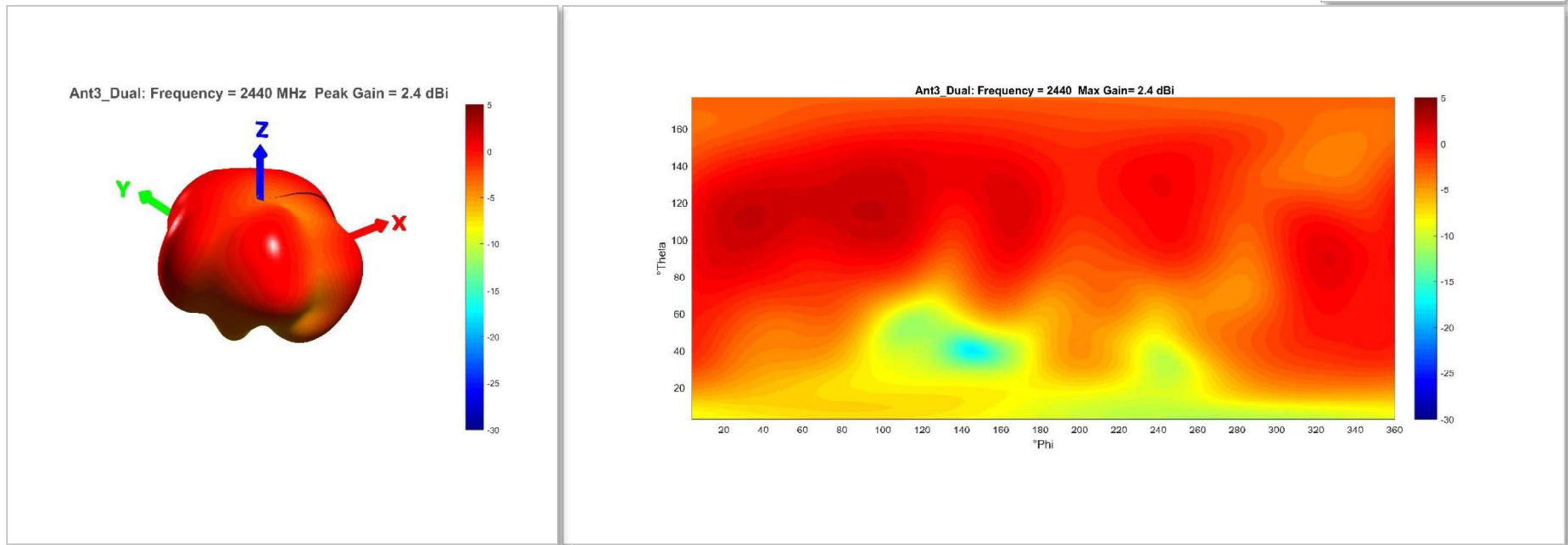
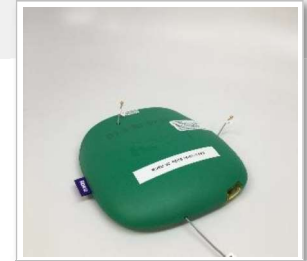
3D Pattern – Ant2_Dual at 2.44 GHz



3D Pattern – Ant2_Dual at 5.5 GHz



3D Pattern – Ant3 at 2.44 GHz



3D Pattern – Ant3_Dual at 5.5 GHz

