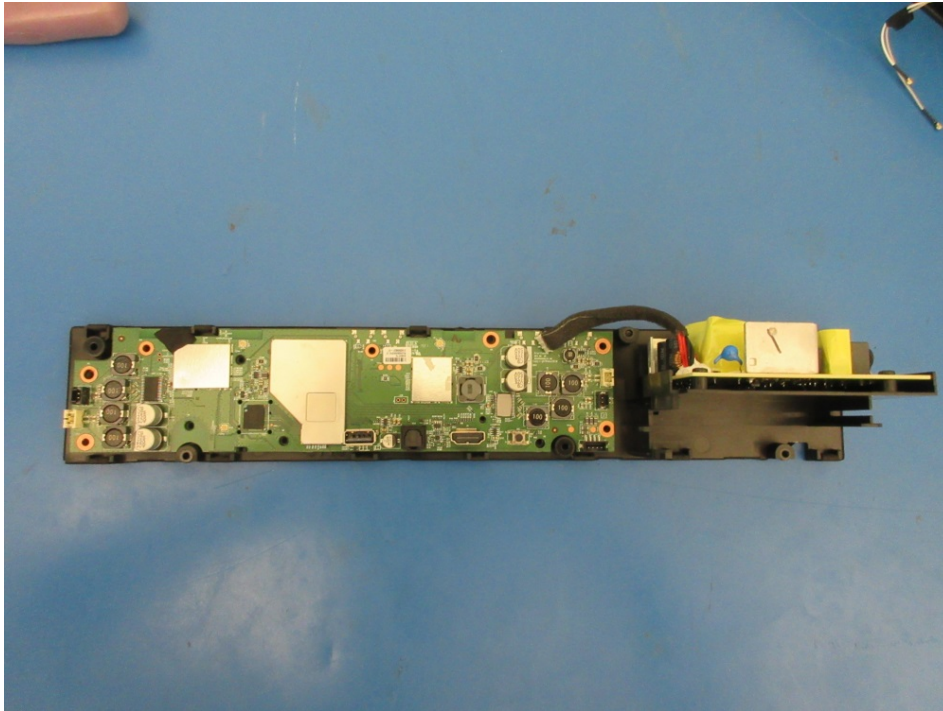
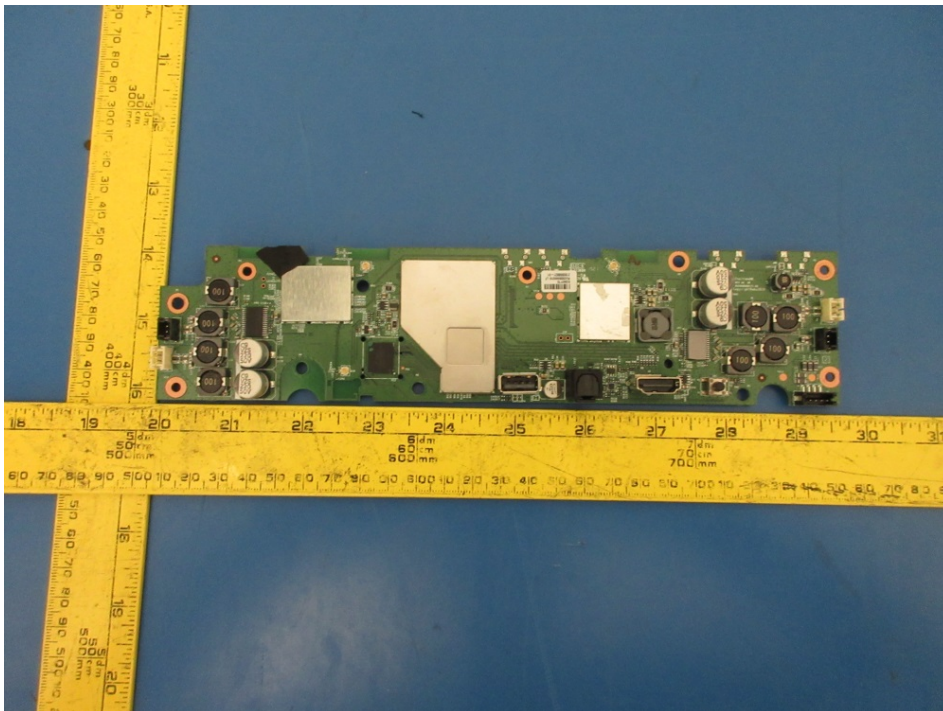


## EUT Internal Photographs

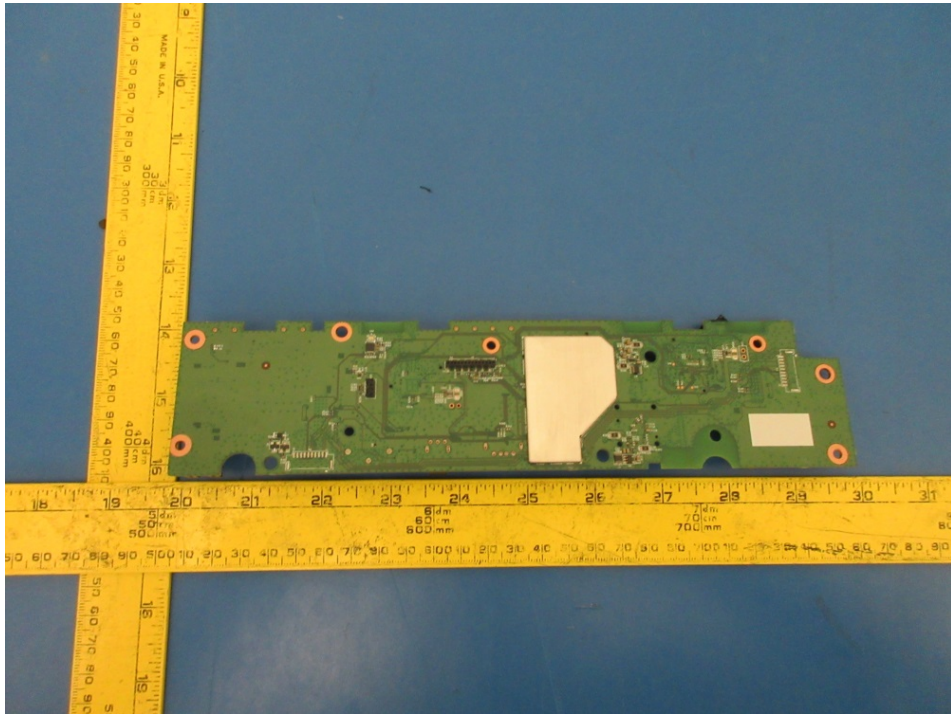
### 1.1 EUT Internal View Open Casing Top View



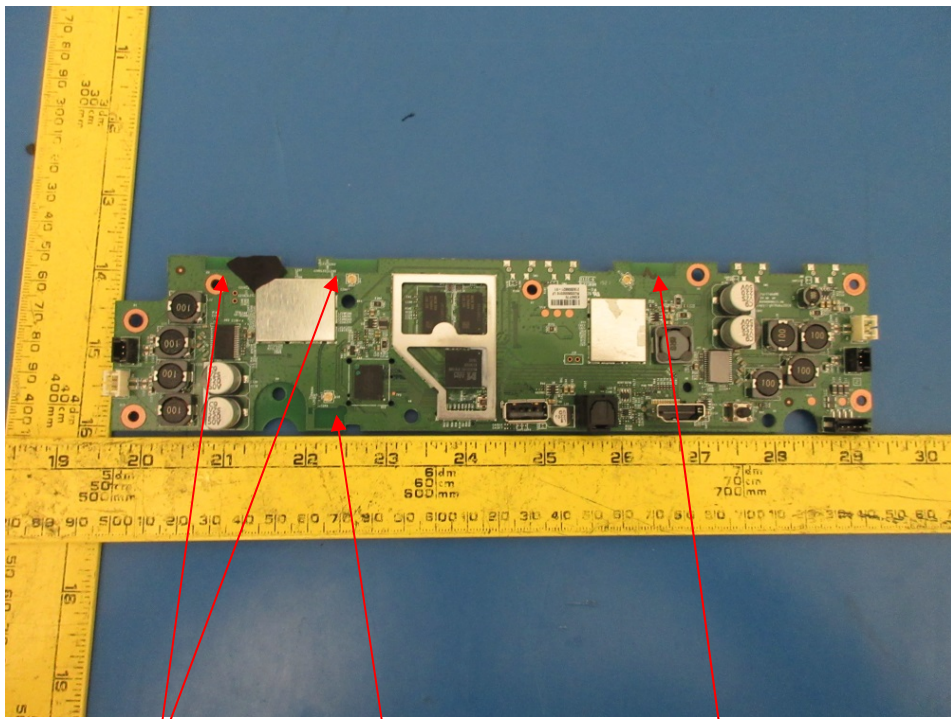
### 1.2 EUT Internal View w/o Casing w/ Shield – Top View



**1.3 EUT Internal View w/o Casing w/ Shield (soldered) – Bottom View**



**1.4 EUT Internal View w/o Casing w/o Shield – Top View**

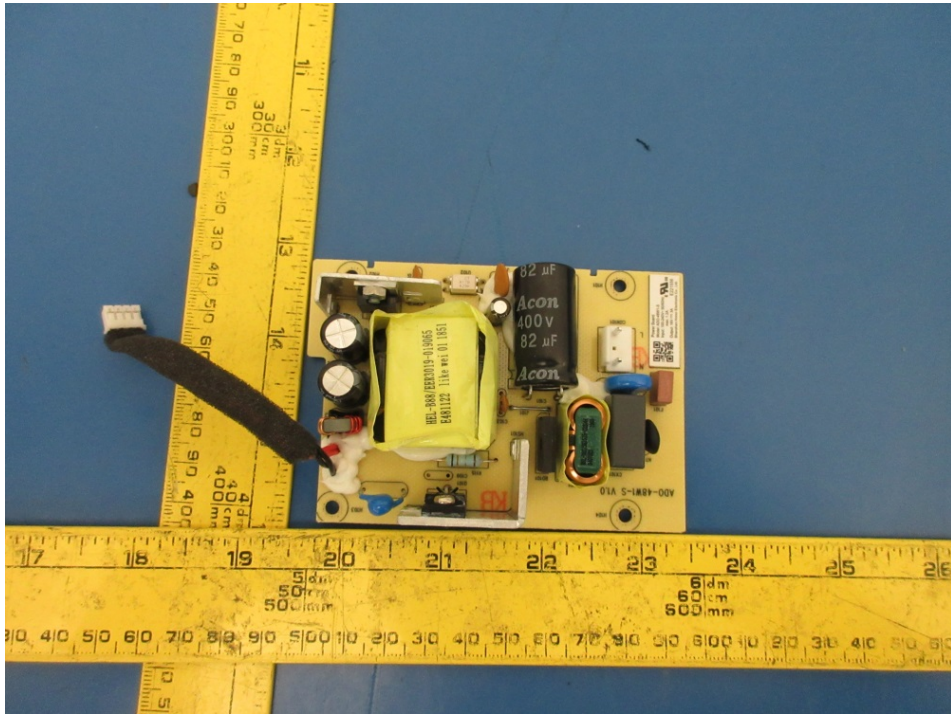


**Radio2 Antennas**

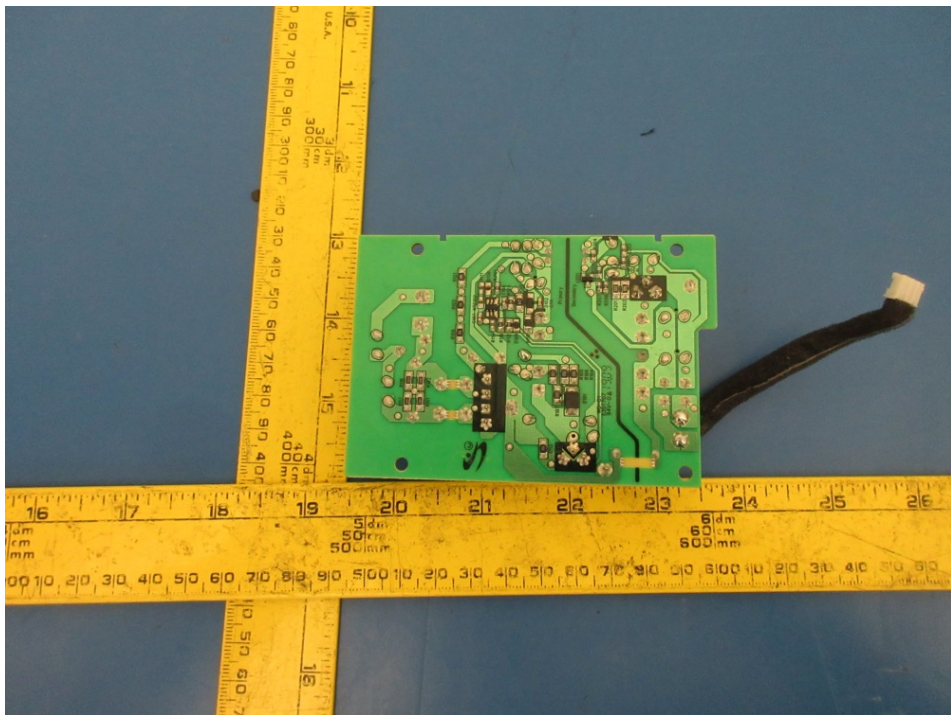
**BT Antenna**

**Radio1 Antenna**

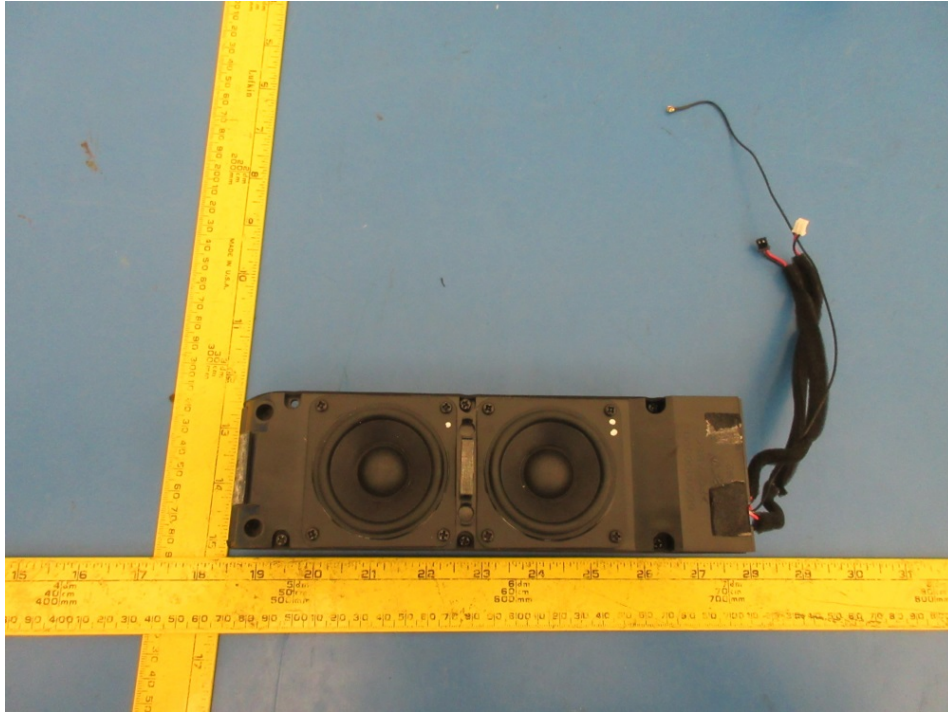
**1.5 EUT Power Supply Internal View w/o Casing – Top View**



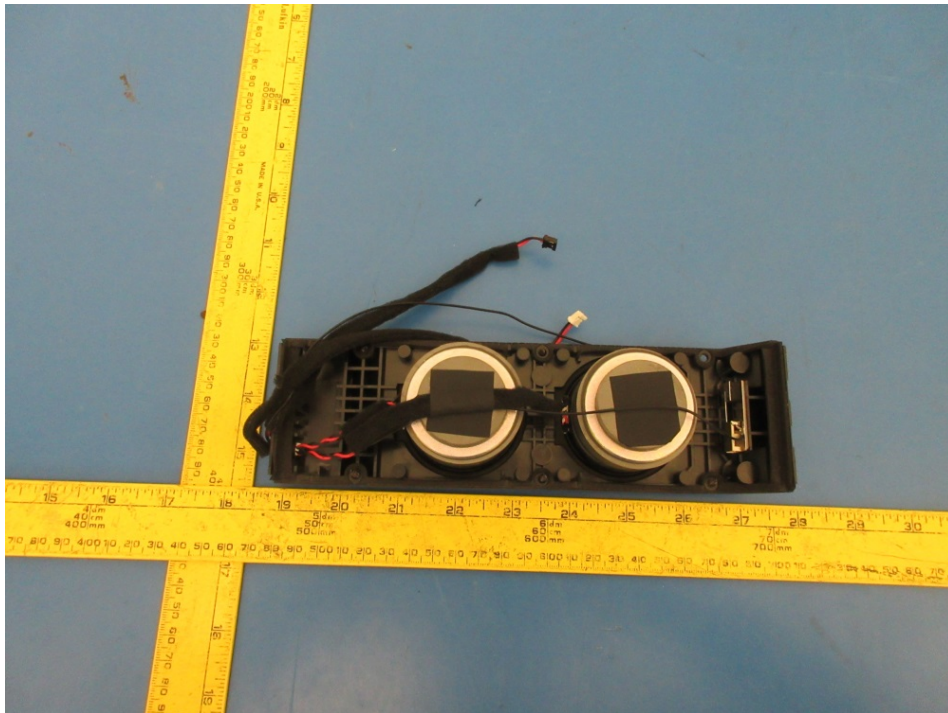
**1.6 EUT Power Supply Internal View w/o Casing – Bottom View**



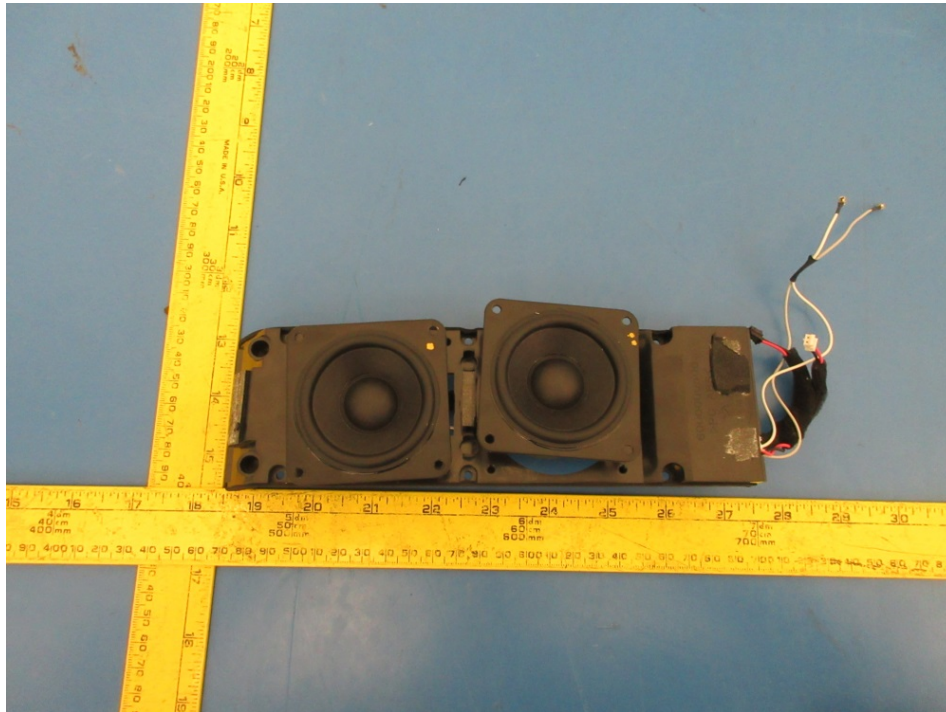
**1.7 EUT Left Speaker Internal View – Top View**



**1.8 EUT Left Speaker Internal View – Bottom View**



**1.9 EUT Right Speaker Internal View – Top View**



**1.10 EUT Right Speaker Internal View – Bottom View**

