

# **Quick start guide**

Pixavi Phone  
Pixavi Thermal  
Pixavi Cam

## Introduction

Congratulations on your Pixavi intrinsically safe device.

All you need to get started with **Pixavi Phone**, **Pixavi Cam** and **Pixavi Thermal** can be found in this quick guide. If you need further assistance, try the Android™ help function, or visit:

[www.bartecmobility.com/support-portal](http://www.bartecmobility.com/support-portal)

### Pixavi Phone <sup>(1)</sup>

Intrinsically safe smartphone

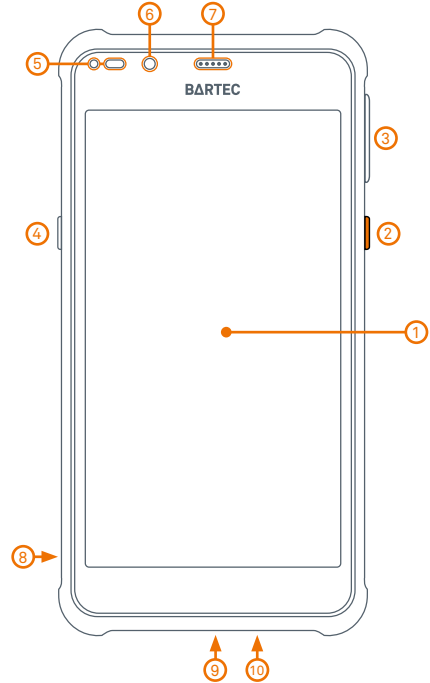
### Pixavi Thermal <sup>(2)</sup>

Intrinsically safe smartphone with FLIR™ thermal camera

### Pixavi Cam <sup>(3)</sup>

Intrinsically safe camera

## Your device



1: 5.5" OLED

2: Power button

3: Volume button (-/+)

4: Programmable button

5: Proximity/Ambient light sensor and status LED

6: Front Camera

7: Earpiece speaker

8: Lanyard mounting slot

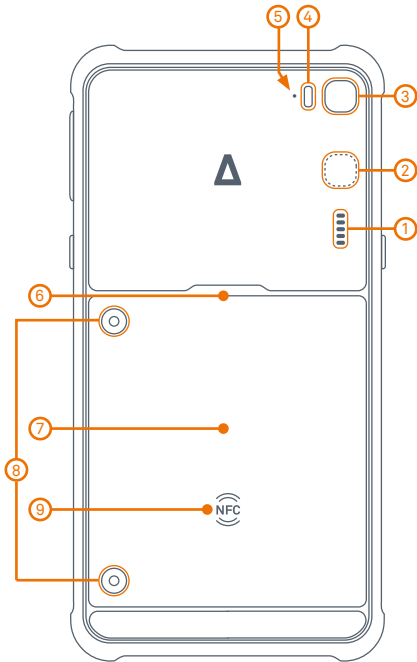
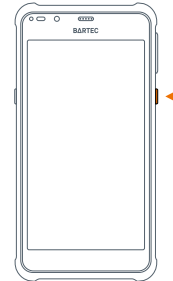
9: Magnetic USB connector

10: Microphone

## Getting started

1: Insert the SIM and/or SD card according to the SIM/SD-card instructions (separate sheet)

2: Press and hold the Power button to power on the device



1: Loudspeaker

2: Thermal camera <sup>(2)</sup>

3: Main camera

4: Flash

5: Microphone

6: Dual SIM/SD tray <sup>(1,2)</sup> or SD tray <sup>(3)</sup> (below battery pack)

7: Battery pack

8: Battery pack torx T10 fasteners

9: NFC

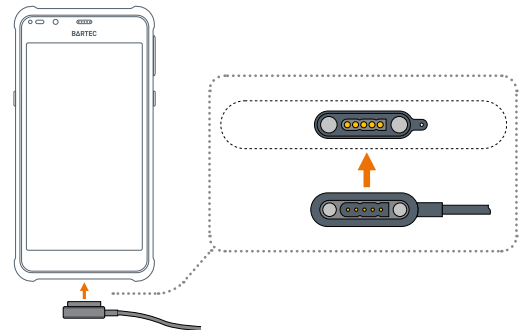
<sup>(1)</sup> Pixavi Phone

<sup>(2)</sup> Pixavi Thermal

<sup>(3)</sup> Pixavi Cam

## Charging

Insert the magnetic charger cable in the USB/Charging port at the bottom of the device. Make sure the orientation of the cable is as illustrated below.



Do not use any force when inserting the magnetic charging/USB cable

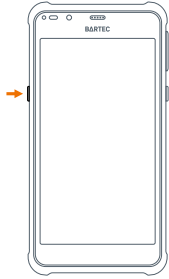
! Charge the device in the non-hazardous area only

For charging the device, use only Bartec approved chargers and cables. More info in the "Conditions For Use" sections

## Programmable button

The programmable button can be configured to launch an applications or action on **single tap**, **double tap** and **long press**.

It's comes preconfigured but can be changed based on your preferences. Go to **Setting -> Programmable Button**.



### Other options:

**Push-to-talk (PTT):** Press and hold to talk.

Single tap, duble tap and press and hold will be disabled when PTT is activated.

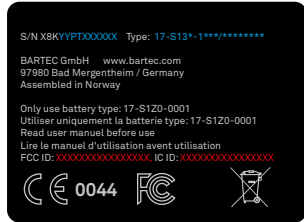
**SOS-message:** Tap the button fast 5 times to send a SOS message to one or multiple contacts.

## Troubleshooting and Support

If the device becomes unresponsive or does not boot successfully, try performing a soft reset. This is done by pressing and holding the power button down for 10 seconds.

FAQs and technical support can be found here:  
[www.bartecmobility.com/support-portal](http://www.bartecmobility.com/support-portal)

## Product marking



**WARNING:** Do not charge or open battery in hazardous areas!  
**ATTENTION:** Ne pas charger la batterie dans la zone à risque d'explosion



## Audio Levels

The device is compliant with the EN9650-1 standard. However, third party music players can exceed the recommended audio levels, and as such should be used with caution as prolonged listening to sound at high volumes can cause permanent damage.

## Special Conditions For Safe Use

Ex ib parameter	USB Interface
Uo	X.X V
Io	X.X A
Po	X.X W
Co	-
Lo	-

## FCC/IC

This device complies with Part 15 of the FCC Rules. Operation is subject to the following two conditions: (1) this device may not cause harmful interference, and (2) this device must accept any interference received, including interference that may cause undesired operation.

Ce produit répond aux exigences de la section 15 de la réglementation FCC. Son fonctionnement est soumis aux deux conditions suivantes: (1) cet appareil ne doit pas causer d'interférences nuisibles et (2) cet appareil doit accepter toute interférence reçue, y compris les interférences qui peuvent provoquer un fonctionnement indésirable.

Text must be approved during FCC cert

## Specific Absorption Rate Data

The Pixavi Phone, Pixavi Thermal and Pixavi Cam is a radio transmitter and receiver. It is designed and manufactured not to exceed the emission limits for exposure to radio frequency (RF) energy set by the Federal Communications Commission (FCC) of the U.S. Government, Industry Canada of the Canadian Government (IC), and recommended by The Council of the European Union. The exposure standard for wireless devices employs a unit of measurement known as the Specific Absorption Rate, or SAR. The SAR limit set by the FCC/IC is 1.6W/kg. The SAR limit recommended by The Council of the European Union is 2.0W/kg. Tests for SAR are conducted using standard operating positions specified by the FCC/IC with the device transmitting at its highest certified power level in all tested frequency bands.

For body worn operation, the Pixavi Phone, Pixavi Thermal and Pixavi Cam devices has been tested and meets the FCC/IC exposure guidelines when used with an accessory that contains no metal and that positions the device a minimum of 10 mm from the body. Such a device can i.e. be BARTEC PIXAVI wrist cradle or BARTEC PIXAVI belt clip.

The highest SAR value measured for the Pixavi Phone, Pixavi Thermal and Pixavi Cam is:

Head SAR: **0.571** (W/kg)

Body SAR: **0.148** (W/kg)

Text must be approved and tested during FCC cert

## **FCC**

Note: This equipment has been tested and found to comply with the limits for a Class B digital device, pursuant to part 15 of the FCC Rules. These limits are designed to provide reasonable protection against harmful interference in a residential installation. This equipment generates uses and can radiate radio frequency energy and, if not installed and used in accordance with the instructions, may cause harmful interference to radio communications. However, there is no guarantee that interference will not occur in a particular installation. If this equipment does cause harmful interference to radio or television reception, which can be determined by turning the equipment off and on, the user is encouraged to try to correct the interference by one or more of the following measures:

- Reorient or relocate the receiving antenna.
- Increase the separation between the equipment and receiver.
- Connect the equipment into an outlet on a circuit different from that to which the receiver is connected.
- Consult the dealer or an experienced radio/TV technician for help.

This Pixavi Cam meets the government's requirements for exposure to radio waves. The guidelines are based on standards that were developed by independent scientific organizations through periodic and thorough evaluation of scientific studies. The standards include a substantial safety margin designed to assure the safety of all persons regardless of age or health.

## **IC**

This device complies with Industry Canada licence-exempt RSS standard(s). Operation is subject to the following two conditions: (1) This device may not cause interference, and (2) This device must accept any interference, including interference that may cause undesired operation of the device.

Le présent appareil est conforme aux CNR d'Industrie Canada applicables aux appareils radio exempts de licence. L'exploitation est autorisée aux deux conditions suivantes:

- (1) l'appareil ne doit pas produire de brouillage, et
- (2) l'utilisateur de l'appareil doit accepter tout brouillage radioélectrique subi, même si le brouillage est susceptible d'en compromettre le fonctionnement

## Conditions For Use (ATEX & IECEx)

The ambient temperature range of the device is -20°C to +60°C. The device shall be protected from contamination by liquid and dust; this is normally achieved by the operator carrying the device on their person. The USB port may be used for charging the equipment when in the non-hazardous area only.

For charging the device, use only Bartec approved chargers:

<b>Charger with EU plug:</b>	<b>G7-S0Z0-0001</b>
<b>Charger with UK plug:</b>	<b>G7-S0Z0-0002</b>
<b>Charger with US plug:</b>	<b>G7-S0Z0-0003</b>
<b>Charger with AU plug:</b>	<b>G7-S0Z0-0004</b>
<b>Charging dock:</b>	<b>G7-S0Z0-0007</b>
<b>Vehicle charging dock:</b>	<b>G7-S0Z0-0008</b>

For connection to computers and car chargers, use only Bartec approved charging cable:

<b>USB Safe Box cable</b>	<b>G7-S0Z0-0006</b>
---------------------------	---------------------

## Conditions For Use (CSA)

The ambient temperature range of the device is -20°C to +60°C. The device shall be protected from contamination by liquid and dust; this is normally achieved by the operator carrying the device on their person. The USB port may be used for charging the equipment when in the non-hazardous area only.

For charging the device, use only Bartec approved chargers:

<b>Charger with EU plug:</b>	<b>G7-S0Z0-0001</b>
<b>Charger with UK plug:</b>	<b>G7-S0Z0-0002</b>
<b>Charger with US plug:</b>	<b>G7-S0Z0-0003</b>
<b>Charger with AU plug:</b>	<b>G7-S0Z0-0004</b>
<b>Charging dock:</b>	<b>G7-S0Z0-0007</b>
<b>Vehicle charging dock:</b>	<b>G7-S0Z0-0008</b>

For connection to computers and car chargers, use only Bartec approved charging cable:

<b>USB Safe Box cable</b>	<b>G7-S0Z0-0006</b>
---------------------------	---------------------

## Legal

Android is a trademark of Google LLC.

**BARTEC**