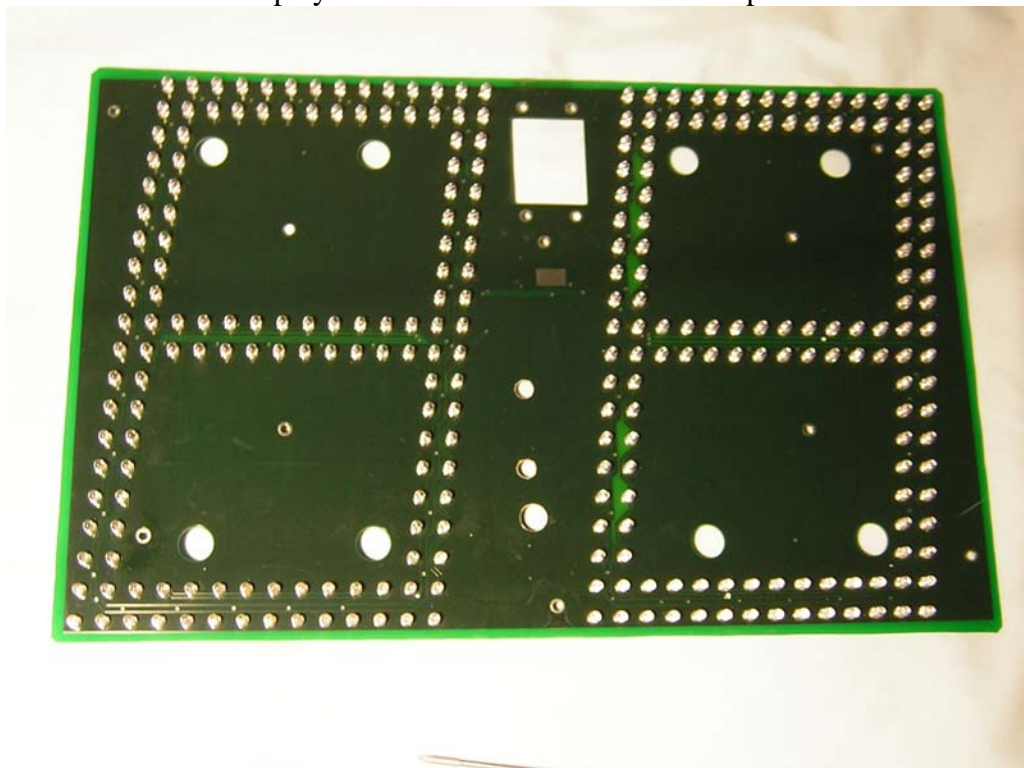
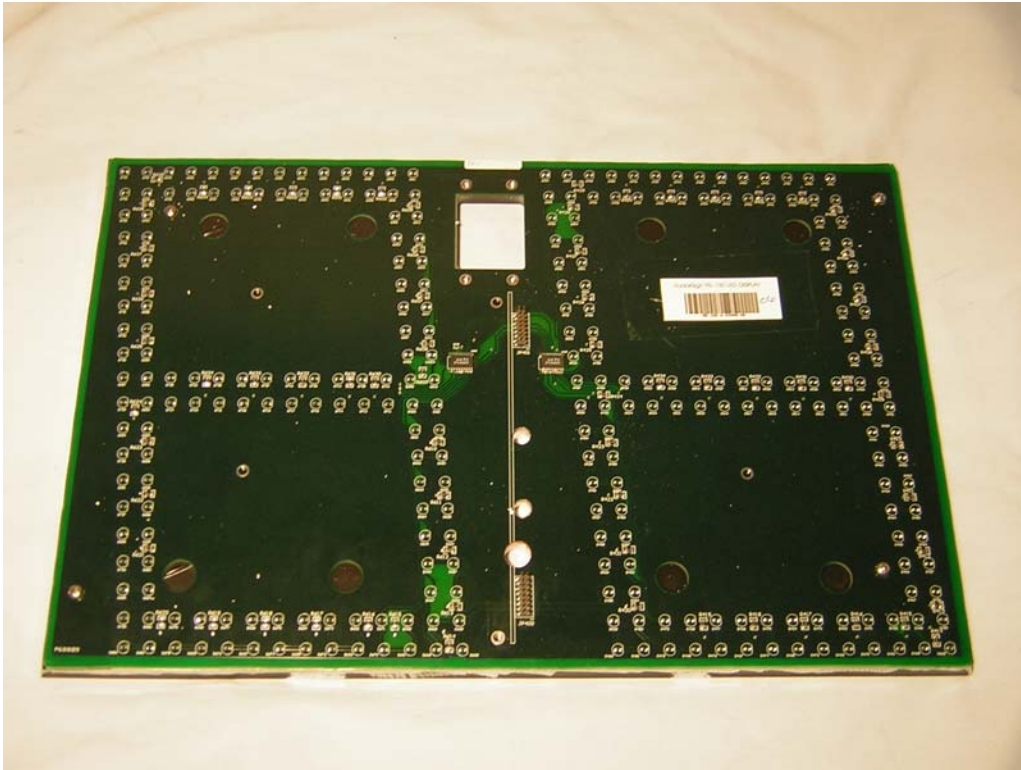


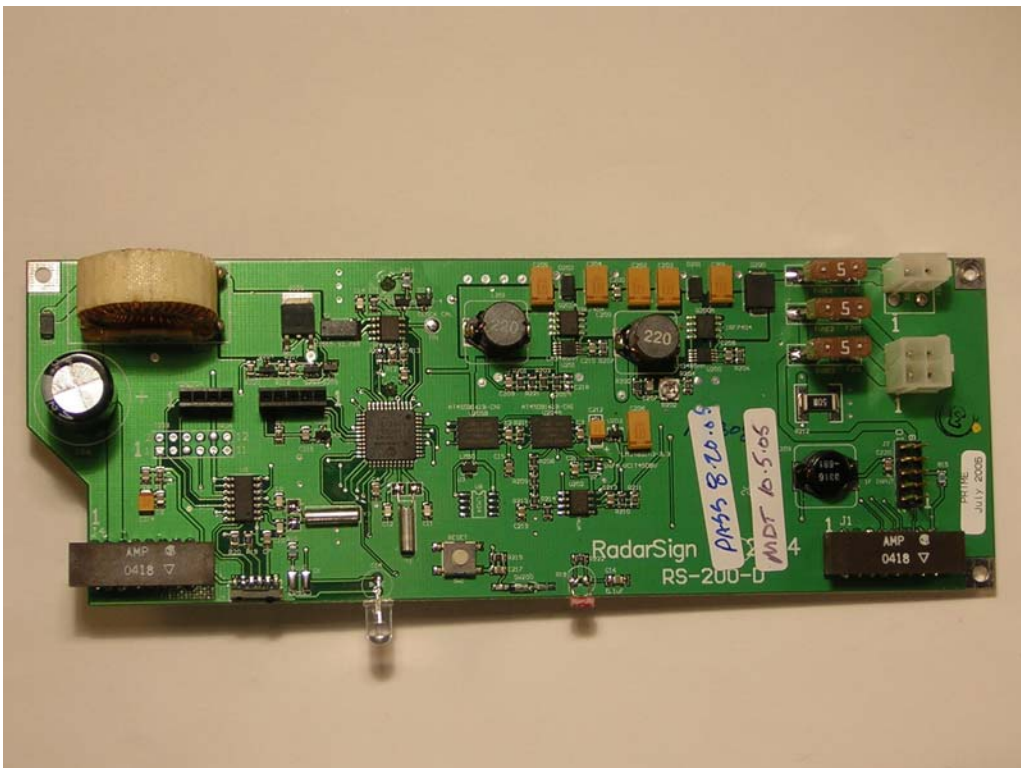
Rear of the display PCB with CPU board and Gunnplexer attached.



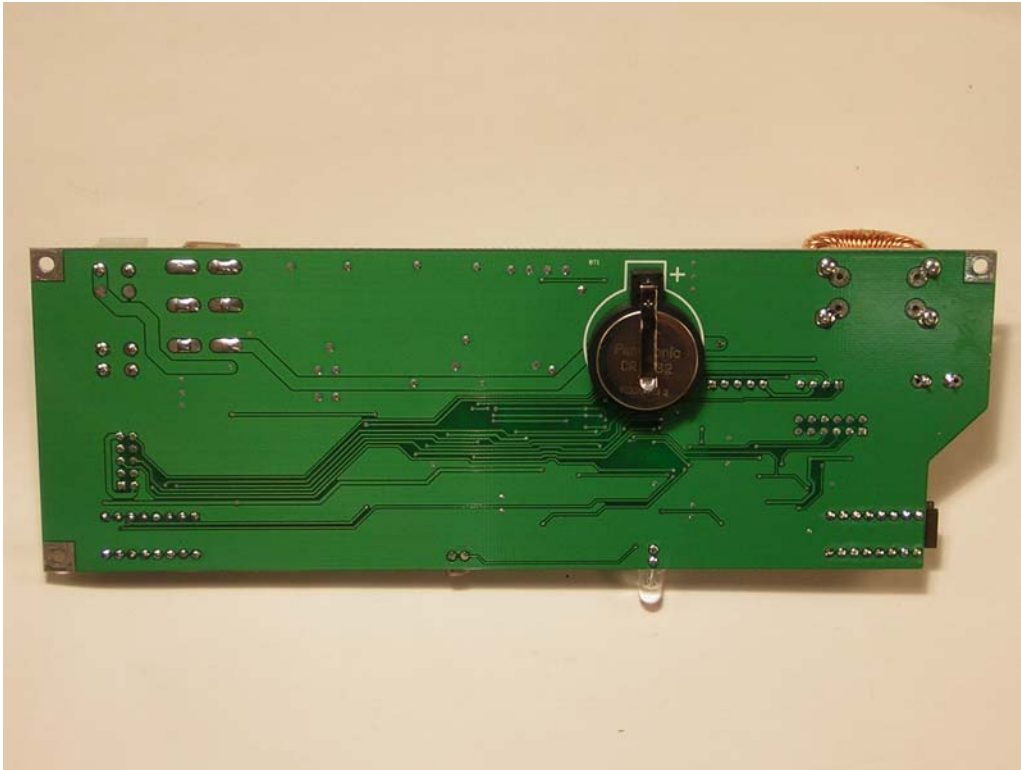
Front of the display PCB showing the leds



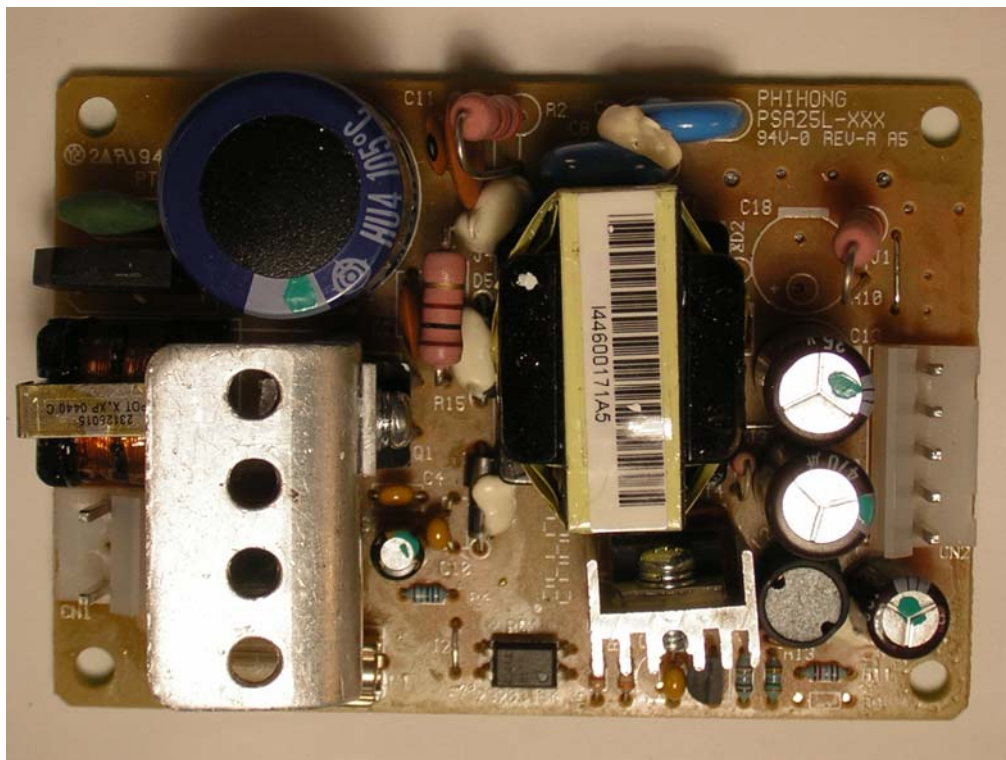
Rear of the display PCB



Top of the CPU PCB



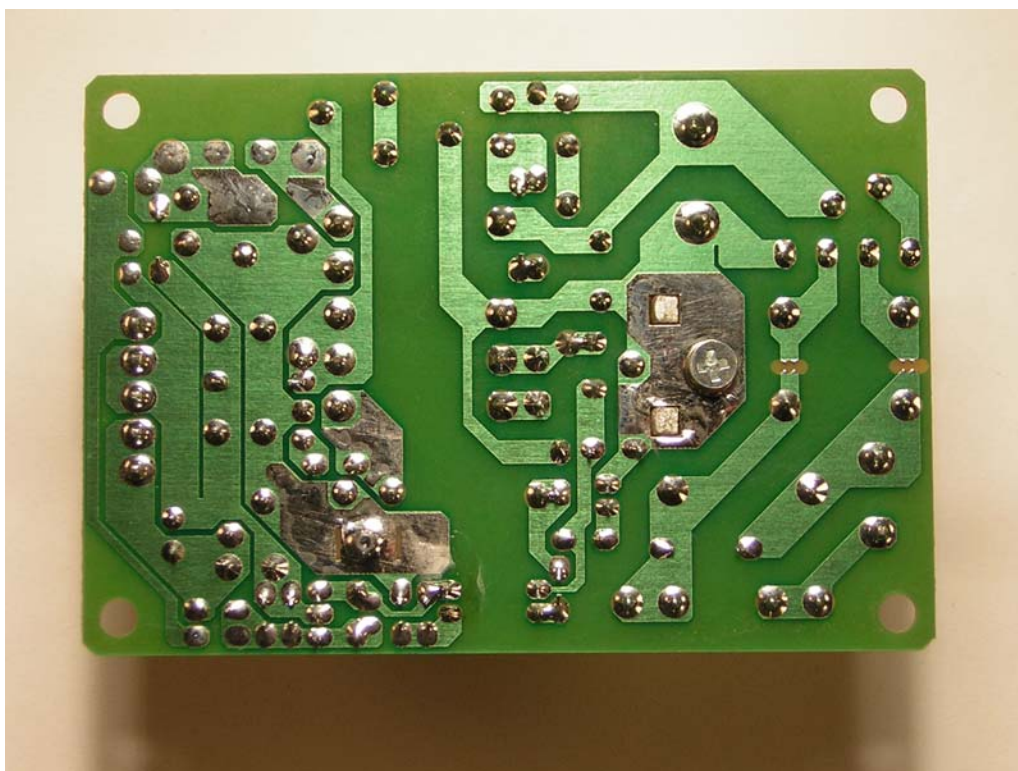
Bottom of the CPU PCB



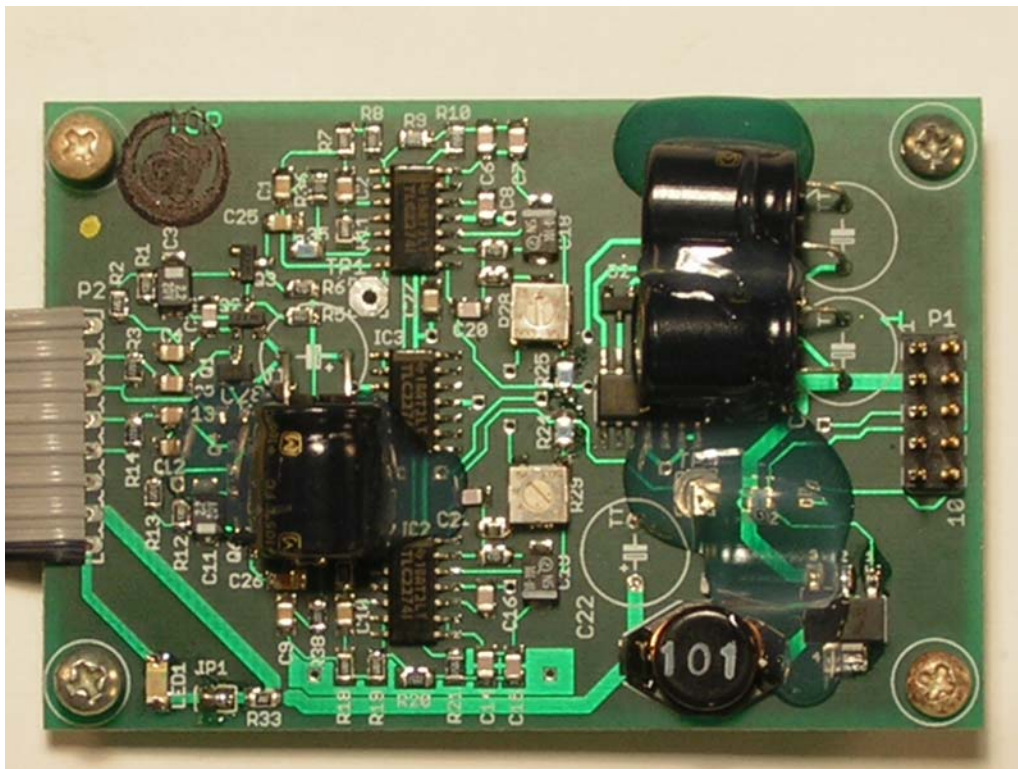
Top of power supply with heatsink attached



Top of power supply with heatsink removed



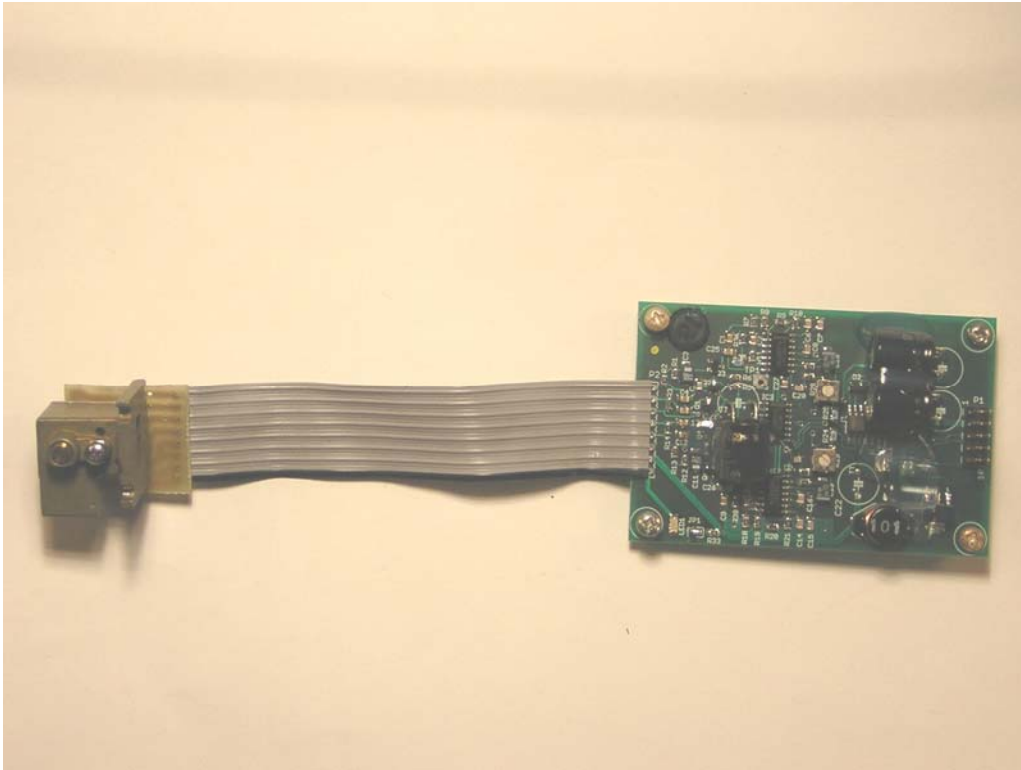
Bottom of the power supply



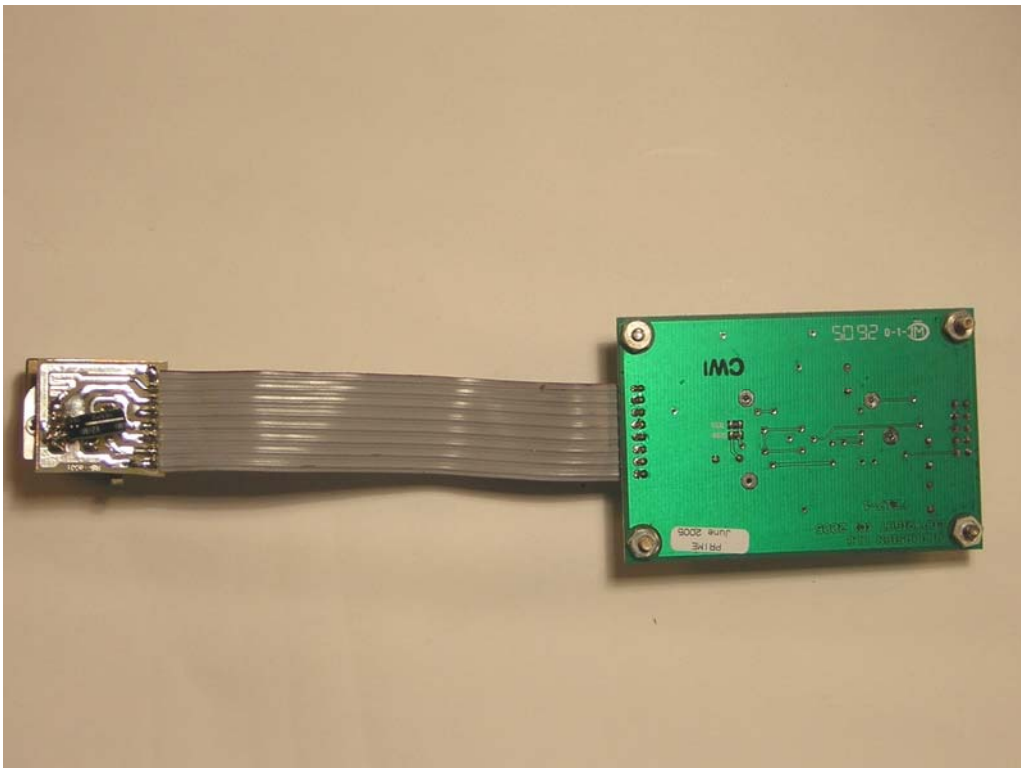
Top of FE-17 board



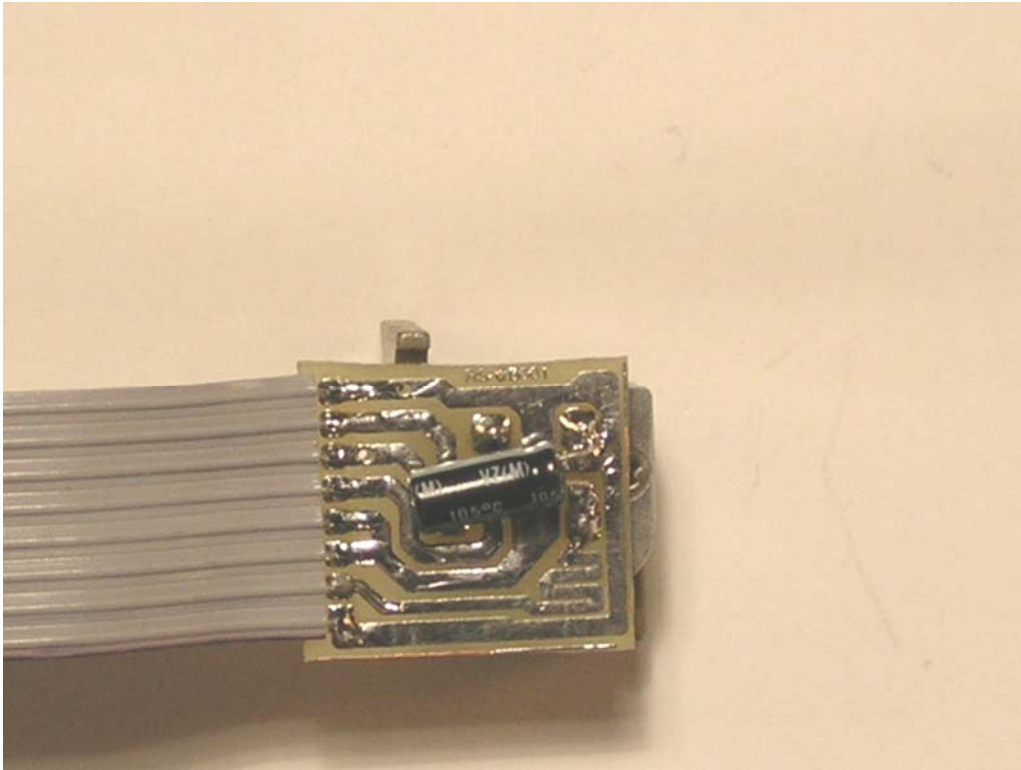
Bottom of FE-17 board



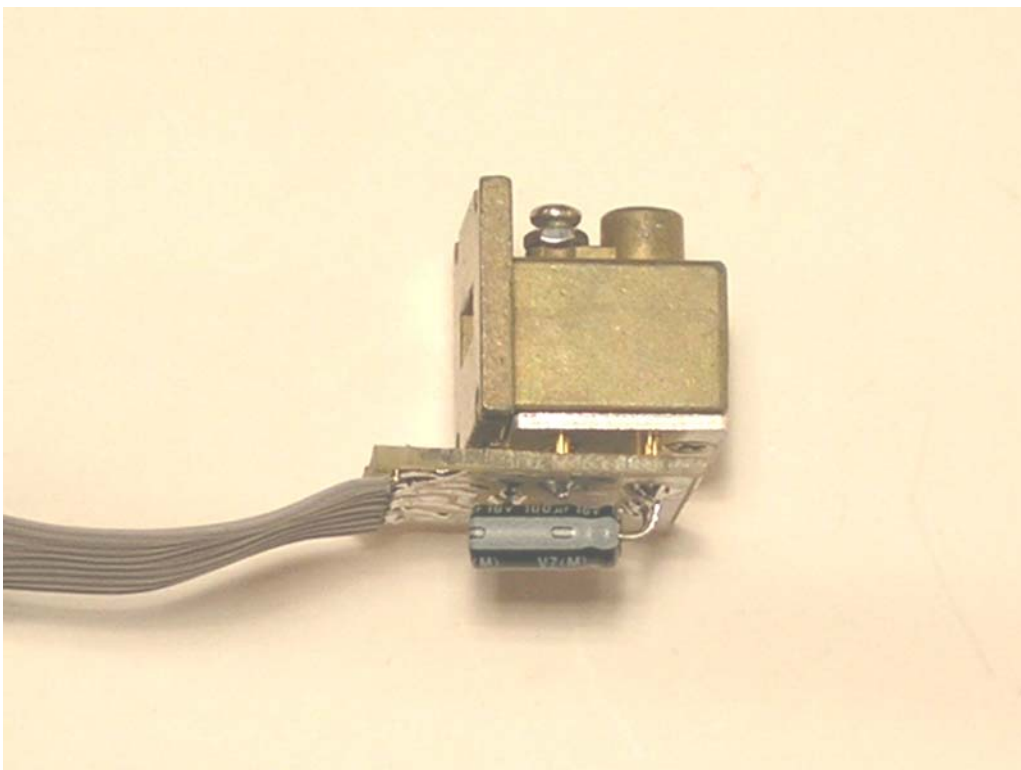
View of the FE-17 board with cable connected to the Gunnplexer



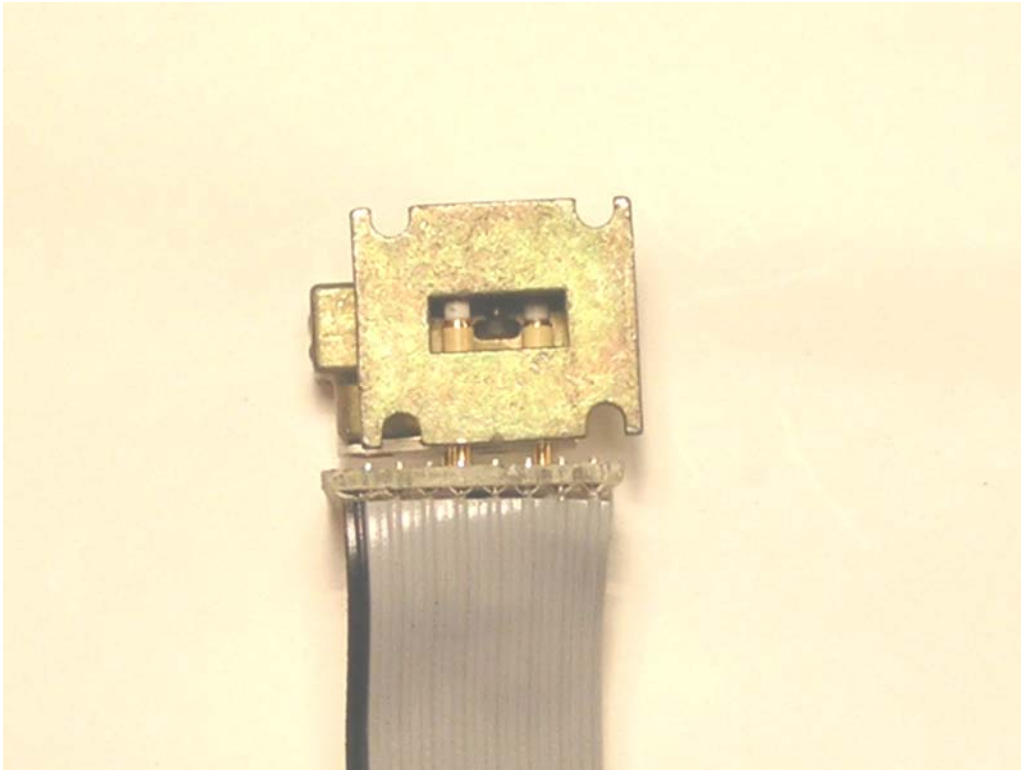
Another view of the FE-17 board connected to the gunnplexer



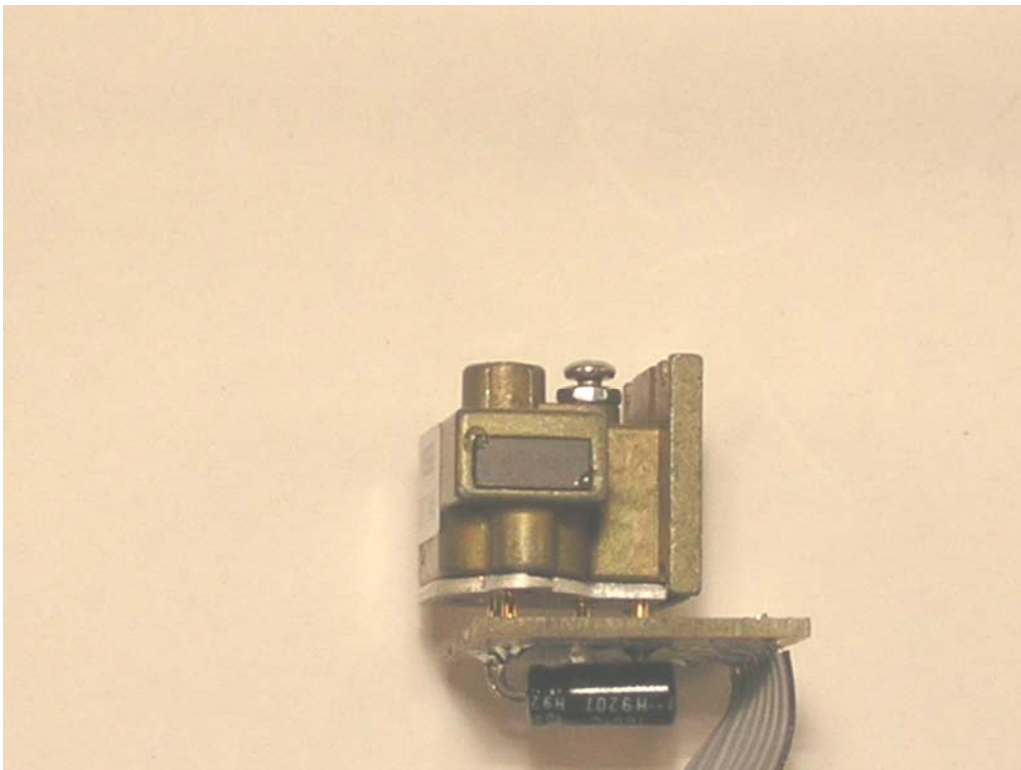
Bottom of Gunnplexer board



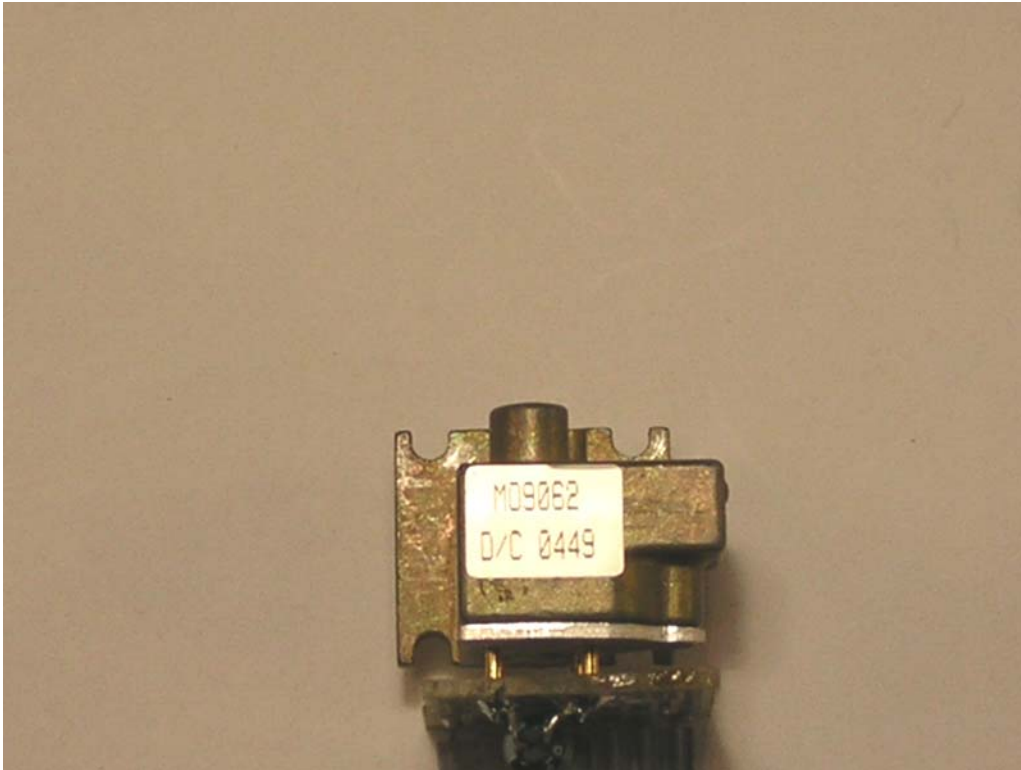
Side of the Gunnplexer



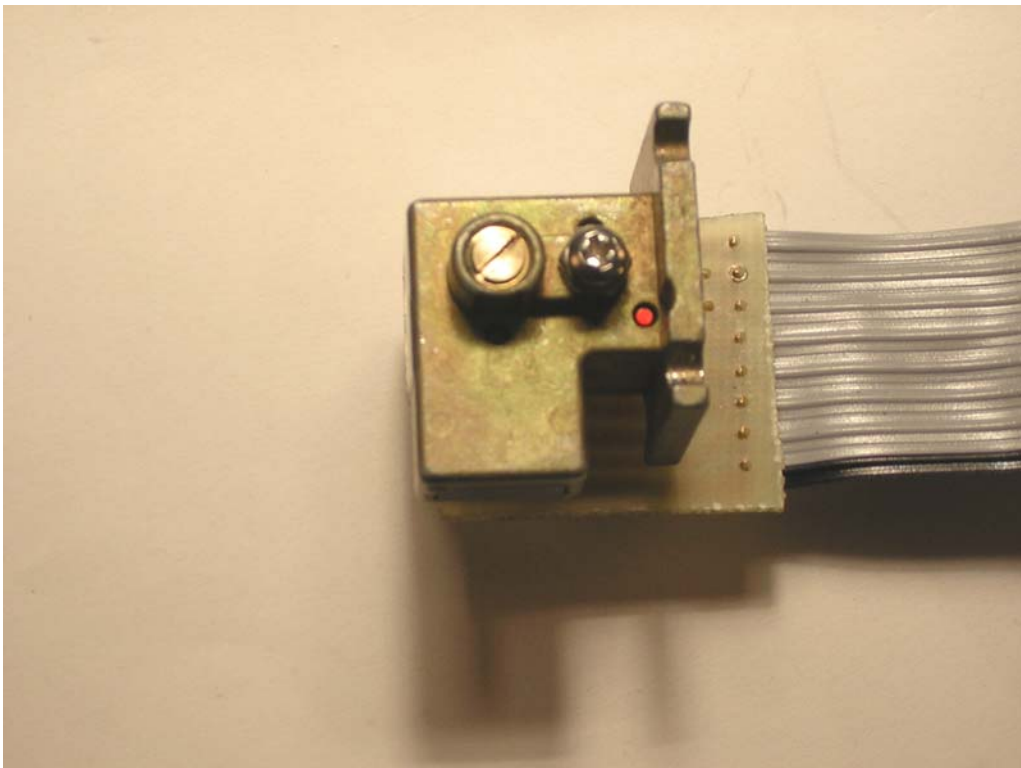
Front of the Gunnplexer



Side of the Gunnplexer



Back of the Gunnplexer



Top of the Gunnplexer