

# CDMA 1xEV-DO **Release A** USB Modem

## Technical Specifications

### (CDU-680)



**Version : 0.1**

**Date : Oct. 21, 2006**

**C-motech Co., Ltd. Proprietary and Confidential**

This document is the sole and exclusive property of C-motech.  
Not to be distributed or divulged without prior written agreement.

### CDU-680 Technical Specifications

All data and information contained in or disclosed by this document are confidential and proprietary information of C-motech Incorporated, and all rights therein are expressly reserved. By accepting this material, the recipient agrees that this material and the information contained therein are held in confidence and in trust and will not be used, copied, reproduced in whole or in part, nor its contents revealed in any manner to others without the express written permission of C-motech Incorporated.

This information provided in this document is provided on an “as is” basis.

In no event will C-motech Incorporated be liable for any damages arising directly or indirectly from any use of information contained in this document.

Information in this document is preliminary and subjected to change without any notice.

#### Disclaimers

Life support – This product is not designed for use in life support appliances or systems where malfunction of these products can reasonably be expected to result in personal injury.

C-motech Co., Ltd. customers using or selling these products for use in such applications do so at their own risk and agree to fully indemnify C-motech Co., Ltd. for any damages resulting from such application.

**Right to make change** - C-motech Co., Ltd. reserves the right to make changes, without notice, in the products, including circuits and software, described or contained herein in order to improve design and/or performance.

### Contact Information

If you have any technical queries about this documentation, please contact:

C-motech Co., Ltd.

5F Etronix BLD. 17-10

Yoido-Dong, Youngdungpo-Gu, Seoul 150-874

Korea

Phone: +82 2 785 5540

Fax: +82 2 785 2369

Sales contact point: Email: [steve@cmotech.com](mailto:steve@cmotech.com)

Technical contact point: Email: [gsbahn@cmotech.com](mailto:gsbahn@cmotech.com) (Hardware Team)

Email: [jhkim@cmotech.com](mailto:jhkim@cmotech.com) (Software Team)

Revision History

Level	Date	Description
0.1	Oct.21, 2006	Initial Release

Review draft, C-motech Confidential

### Table of contents

1	Product Overview .....	6
1.1	Overview.....	6
1.2	General Features.....	6
1.3	Functional block Diagram.....	7
2	Specifications.....	8
2.1	Mechanical Specifications .....	8
2.2	Environment Specifications .....	10
2.3	Hardware Specifications.....	10
2.4	CDMA RF performance .....	11
2.5	Software Specifications .....	13
3	Instruction .....	14
3.1	Package contents.....	14
3.2	Optional Accessory Drawing.....	15
3.3	Getting start.....	16
3.3.1	System Requirements.....	16
3.3.2	Installing CDMA USB Modem software and Driver .....	17

### 1. Product Overview

#### 1.1. Overview

- Enjoy the freedom to get fast internet connection, anywhere, anytime.
- Now possible anywhere you want to work or play.
- Global wireless access to the internet, e-mail.
- Powerful CDMA 1xEV-DO Release A network.
- Compact, portable, manageable and state-of-the-art device.

#### 1.2. General Features

##### DATA SERVICES

CDMA 1xEV-DO(A)(IS-856-A)

Downlink: up to 3.1Mbps, Up link: 1.8Mbps

CDMA 1xRTT(IS-2000 Rel.0)

Forward and reverse link: up to 153.6Kbps

\* Limit to Network conditions

##### GENERAL CHARACTERISTICS

Dimension/Weight: 32x78x9.5(mm)/25g

Operating Temperature: -20°C to 50°C

Qualcomm MSM6800 chipset based(ZIF)

MRD(Mobile Receiver Diversity)

Visual indicator LEDs

USB Series "A" Type plug form factor

Nominal Operation voltage: from USB host

##### ANTENNA

Primary antenna: Internal type

\* Available extended antenna

Secondary antenna: internal type

##### STANDARDS

IS-856-A (CDMA 1xEV-DO(A))

IS-2000 Rel.0 (CDMA 1xRTT)

IS-707-A Data Service

IS-683C OTA Service Provisioning

IS-853-C Wireless IP Network

IS-707 AT command

##### SYSTEM REQUIREMENTS

Windows® 2000/XP

Connection: USB slot A-Type

Disk Drive: CD-ROM

Processor: 667MHz or faster

Memory: 128MB

Disk space: 100MB

##### FREQUENCY BANDS

CDMA 800MHz(Band class 0)

CDMA 1900MHz(Band class 1)

GPS L1 band(1575.42MHz)

**In packing box:** Modem Device, USB Y-cable, Install CD, Manual

## CDU-680 Technical specification

---

- Wave Type

Cellular: G7W

US-PCS: G7W

- Frequency Scope

Transmit Frequency(MHz)		Receiver Frequency(MHz)	
Cellular	US-PCS	Cellular	US-PCS
824.82 ~ 848.19	1850 ~ 1910	869.82 ~ 893.19	1930 ~ 1990

- Rated Output Power

Cellular: 0.25W, CLASS 3

US-PCS: 0.25W, CLASS 2

- Voltage and Current value of terminal part power amplifier

Band	Part name	Maker	Typical voltage	Max. current	RF output power
Cellular	FC7113-1	FCI	3.4V	480mA	28dBm
US-PCS	SKY77149	FCI	3.4V	470mA	28dBm

- Functions of major semi-conductors

Part name	Function
MSM6800	MSM(Mobile Station Modem) Terminal operation control and digital signal processing
MCP	Storing of terminal operation program NAND Flash memory(1Gb) and SDRAM(256Mb)
RFR6500	Convert Rx RF signal to base-band signal
RFT6150	Convert base-band signal to Tx RF signal
PM6650	Power management

## 2. Specifications

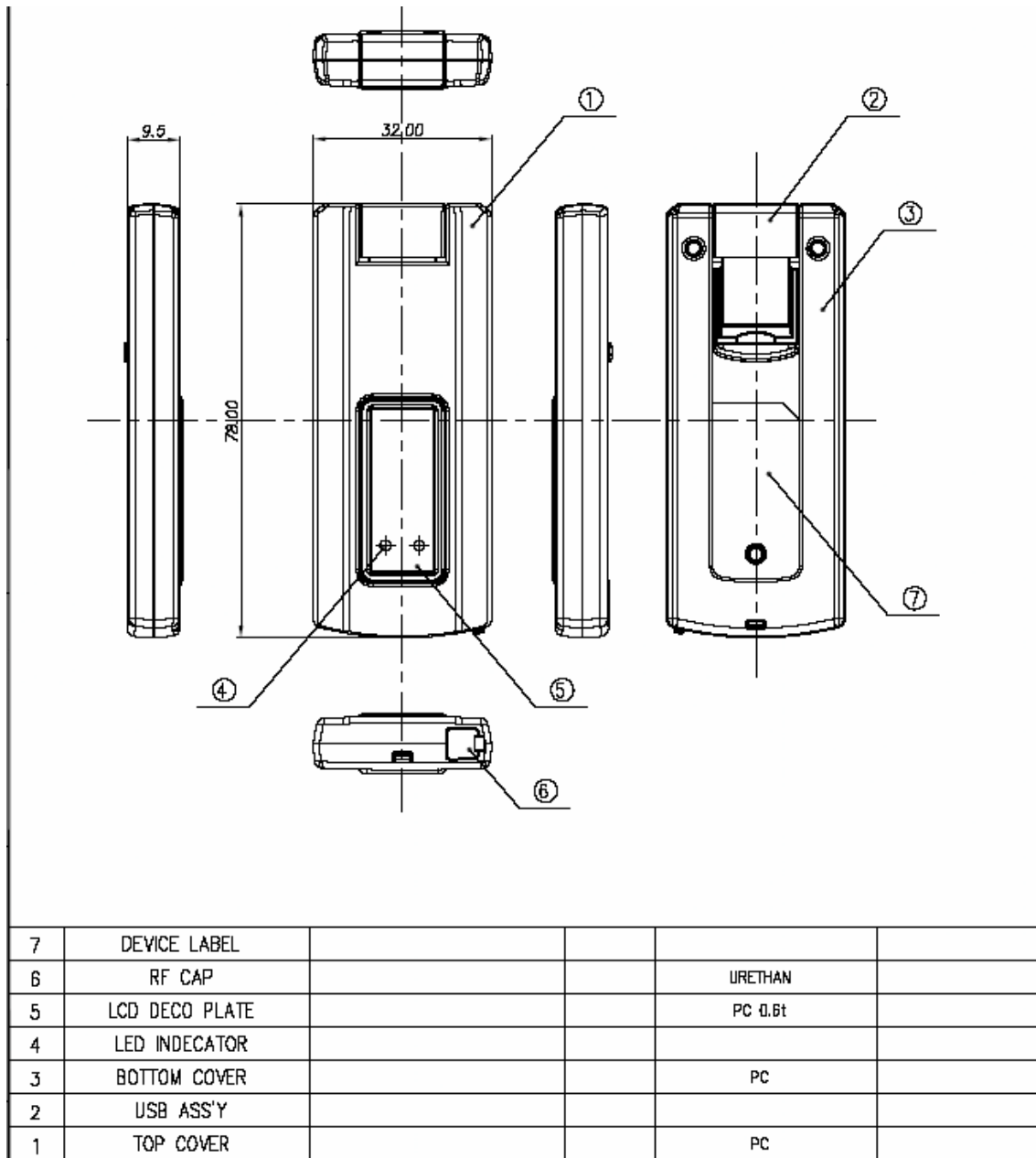
### 2.1. Mechanical Specifications

Dimensions	32mm x 78 mm x 9.5mm ( 1.26 x 3.1x 0.38 inch) * Dimension is in accordance with the following drawing.
Weight	Approx. 25g ( 0.9 oz)
Form Factor	USB Series "A" Type plug
Antenna	Internal type
RF Switch connector for test	MOB-140
Visual indicator LEDs	RED-Single color & RED & BLUE- Dual color
Housing Material	PC
Battery Pack	No support
Headset Jack	No support
Power button	No support
Car-kit connector interface	No support

#### LED function descriptions

Function	LED Color		
	RED	RED	BLUE
POWER ON	ON	ON	
ACQUISITION- Fail	Flash (500ms)	Flash (500ms)	
Idle(1x & HDR)	ON		ON
DATA CALL: 1X(QNC)	ON	Flash (500ms)	Flash (500ms)
DATA CALL: HDR	ON		Flash (500ms)
Dormant state	ON	ON	ON
Incoming SMS	ON		Flash (200ms) , 4 times





### 2.2. Environment Specifications

Operating conditions	-20°C ~ +50°C , 85%(at 50(C), relative humidity (non-condensing)
Storage Temperature	-40°C ~ +70°C
Humidity	95%, non-condensing
Vibration Stability	
Shock Stability	
ESD discharge	Contact / Air discharge

### 2.3. Hardware Specifications

Main Chipset	MSM6800 ZIF
Memory(NAND FLASH / SDRAM)	1Gb / 512Mb (128MB/64MB)
Interface Type	Full-speed USB 2.0 Compliant
Common Air Interface	Dual-band 1xEV-DO Release A & 1xRTT
Frequency band	CDMA Band class 0 & 1
Mobile Receiver Diversity	Support
gpsOne	Support - GPS L1 band (1575.42MHz)
Battery and Charger	N/A
Display type	N/A
Voice capability	N/A
DC input operating voltage	+5VDC from USB Host port
Maximum current @ +5VDC, HDR, DRC=2.4Mbps, Maximum TX Power (24+/- 0.3dBm)	Under 600mA
On communication Ior=-75dBm Ior=-104dBm	Under 200mA Under 500mA

(Note) The current consumption might vary of 5% over the whole operating temperature range.

### 2.4. CDMA RF performance

RF performances are compliant with IS-95A/B, cdma2000-1X, and 1xEV-DO.

#### CDMA2000-1X RX & TX specifications

##### Receiver Specifications

Receiver Specifications		
	Cellular	USPCS
Frequency range (MHz)	869.94 ~ 893.37	1931.25 ~ 1990.00
Frequency Bandwidth	1.23MHz	
Receiver Sensitivity	Under -104dBm	
Single Tone Desensitization	Under -101dBm	
Inter-Modulation		
@Tone Power -43dBm	Under -101dBm	Under -101dBm
@Tone Power -32dBm	Under -90dBm	
@Tone Power -21dBm	Under -79dBm	

##### Transmitter Specifications

	Cellular	USPCS
Frequency range (MHz)	824.64 ~ 848.37MHz	1851.25 ~ 1910.00MHz
Output Power (dBm/1.23MHz)	23 ~ 30 (Class 3)	23 ~ 30 (Class 2)
Frequency Bandwidth	1.23MHz	
Frequency Accuracy	+/- 300Hz	+/- 150Hz
Spurious Emission Limits		
Offset Freq @ +/- 900kHz	Under -42dBc / 30kHz	
Offset Freq @ +/- 1.25MHz		Under -42dBc / 30kHz
Offset Freq @ +/- 1.98 MHz	Under -54dBc / 30kHz	Under -50dBc / 30kHz

## CDU-680 Technical specification

### 1xEV-DO RX & TX specifications

#### Receiver Specifications

Receiver Specifications		Cellular	USPCS
Frequency range (MHz)		869.94 ~ 893.37	1931.25 ~ 1990.00
<u>Receiver Sensitivity</u>	Under -105.5dBm, 0.5% @ -25dBm 0.5%		
FTAP Rate = 307.2 kbps 2Slot QPSK			
FTAP Rate = 2457.6 kbps 1Slot 16QAM			
Single Tone Desensitization	Under -102.4dBm		
Inter-Modulation			
@Tone Power -43dBm	Under -102.4dBm	Under -102.4dBm	
@Tone Power -32dBm	Under -91.4dBm		
@Tone Power -21dBm	Under -80.4dBm		

#### Transmitter Specifications

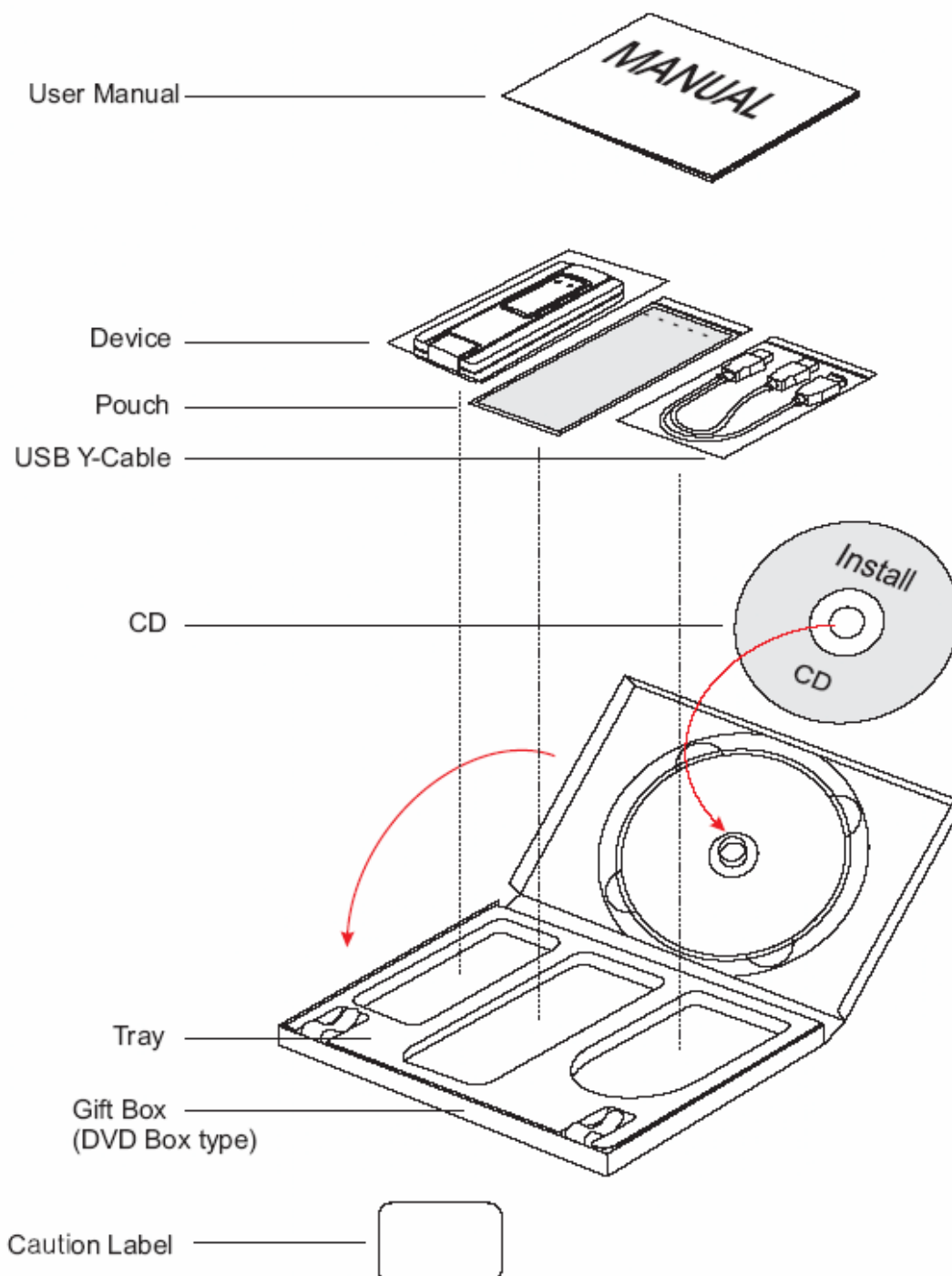
	Cellular	USPCS
Frequency range (MHz)	824.64 ~ 848.37	1851.25 ~ 1910.00
Output Power (dBm/1.23MHz)	23 ~ 30 (Class 3)	23 ~ 30 (Class 2)
Frequency Bandwidth	1.23MHz	
Time Reference	Within $\pm 1.0\mu s$	
Waveform Quality	Over 0.944	
Frequency Accuracy	Within $\pm 300$	Within $\pm 150$ Hz
Spurious Emission Limits		
Offset Freq @ +/- 900kHz	Under -42dBc / 30kHz	
Offset Freq @ +/- 1.25MHz		Under -42dBc / 30kHz
Offset Freq @ +/- 1.98 MHz	Under -54dBc / 30kHz	Under -50dBc / 30kHz

### 2.5. Software Specifications

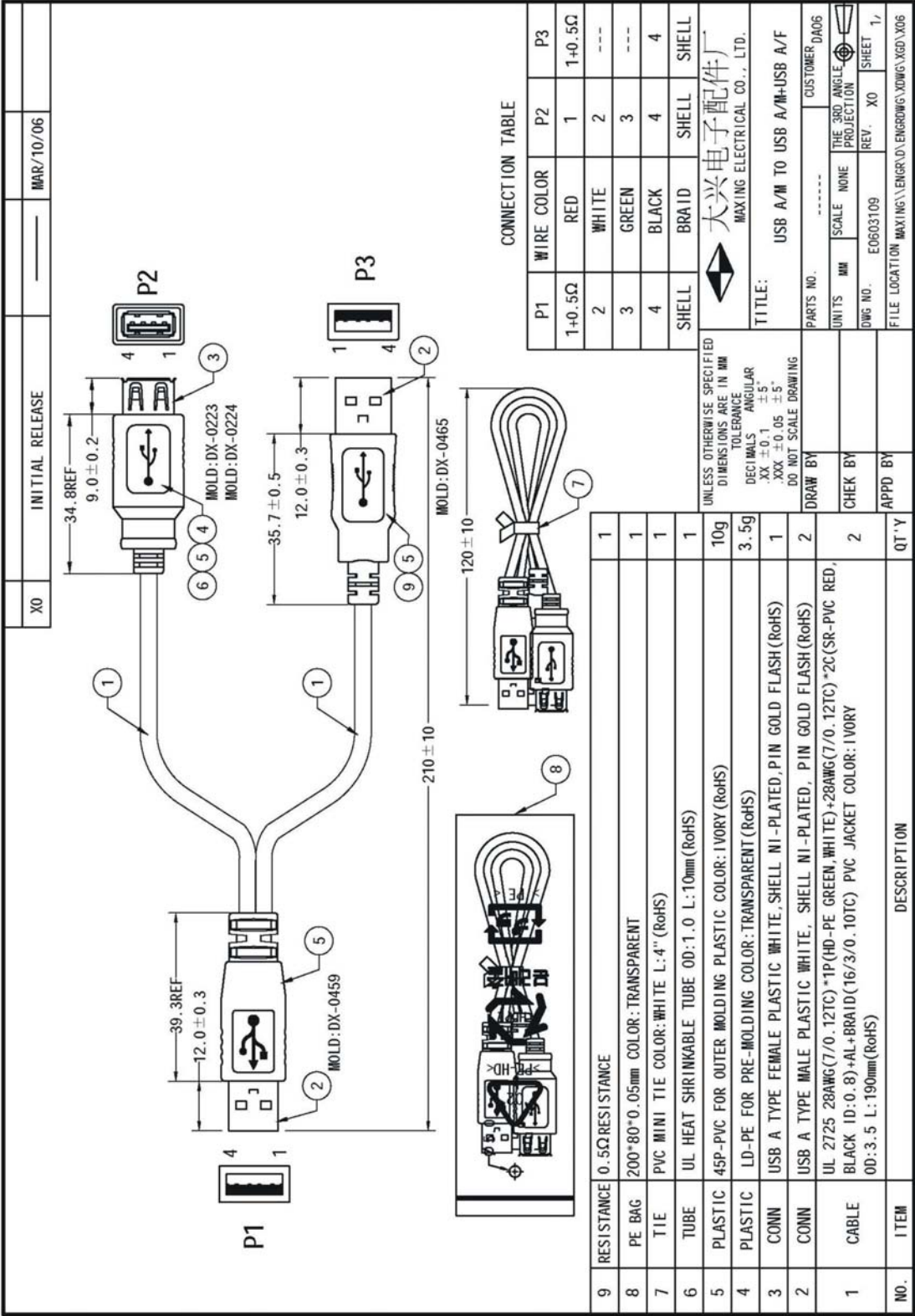
CDMA specifications	1xEV-DO Release A
Data service	Support
SMS	N/A
FAX	N/A
IOTA	Under development
OTASP(IS-863A)	Support
OTAPA(IS-863A)	Support
PRL(preferred roaming list)	Support
Authentication	Support
Voice	N/A
NAM	2
E911 & position location	MS Based & MS Assisted
TTY/Accessibility	N/A
Mobile IP	Support
BREW memory	N/A
Browser	N/A
Languages	US English

### 3. Instruction

#### 3.1. Package contents



3.2. Optional Accessory Drawing



### 3.3. Getting start

#### 3.3.1. System Requirements

The CDMA USB modem is supported on the following OS;

- **Windows®2000**
- **Windows®XP**

To install and run the CDMA USB modem and UI software, your system requires these minimum resources.

OS(Operating System)	Windows® 2000/XP
Connection port	USB slot A-Type
Processor(CPU)	667MHz or faster
Disk Drive	CD-ROM
Memory	128MB
Disk space	100MB

**Note:** Special Note for Windows®2000 user's: To function properly, the CDMA USB modem's IOTA protocol requires support for high security 128-bit encryption. If the installer does not detect high-security support on your system, a pop-up window will appear instructing you to update your Windows®2000 to support 128-bit security. Follow the onscreen instructions to update your system.



### 3.3.2. Installing CDMA USB Modem software and Driver

Follow the instructions below to install the modem UI from the installation CD.

This process requires you to restart your PC at the end of the installation; therefore, we recommend that you quit all open applications before you begin installation.

**Note:** Windows®2000: Users of Windows 2000 must be logged in with administrative privileges to install the CDMA USB Modem software.

Windows®XP: Users of Windows XP may insert the USB Modem prior to installing the software. You may also require administrative privileges, depending on your XP installation.

#### Installing the CDMA USB modem

1. Insert the installation CD into your CD-ROM drive.
  - A. **Do not insert the CDMA USB modem to your laptop/PC yet.**
  - B. This will automatically start the installation and install the required drivers.
2. If the CD does not auto-start, select Start>Run and d:\setup.exe.  
(where d is the letter of your CD-ROM drive)
3. From the CD start-up windows, select **CDMA USB Modem software**.  
This will launch the InstallShield® Wizard.
4. The License Agreement window appears.  
Click **Yes** to accept the agreement and proceed with the installation.
5. Select CDMA USB Modem software and Device Driver.  
And click the **Next** button on the InstallShield screen.
6. Click Next to install the software to the default destination folder (recommended).  
If you need to install the software to a different folder, click Choose and select an alternate install destination.
7. Click Finish or Restart to complete the installation and launch the **CDMA USB Modem software**.
8. Wait for your PC to reboot.  
Windows®2000: You may need to restart your PC manually by selecting  
Start>Shutdown>Restart.

9. Click OK when you are prompted to insert the CDMA USB modem.  
Insert the modem into the USB port.
10. Windows will detect the new hardware (CDMA USB modem) and will install the necessary drivers. The Add New Hardware Wizard or Found New Hardware Wizard will launch, depending on your operating system.
11. Follow the onscreen prompts to allow the wizard to install the drivers.
12. Click OK when you are notified that the installation is complete.

On completion of this step, the CDMA USB modem software and modem driver are installed and you proceed to activate your Modem (in it has not already been activated).