

## **Regulatory Information & Safety notices (CDC-650)**

**Version : 0.1**

**Date : APRIL. 20, 2007**

**C-motech Co., Ltd. Proprietary and Confidential**

This document is the sole and exclusive property of C-motech.  
Not to be distributed or divulged without prior written agreement.

### Revision History

Level	Date	Description
0.1	APRIL. 20, 2007	Initial Release

### Table of contents

<b>Regulatory Notices</b> .....	3
1.1 FCC RF EXPOSURE COMPLIANCE.....	3
1.2 CAUTION .....	4
1.3 WARNING (EMI) .....	4
<b>Safety and Notices</b> .....	5
1.4 Important Notice .....	5
1.5 Safety and Hazards .....	5
1.6 POTENTIALLY UNSAFE AREAS .....	6

### 1. Regulatory Notices

This device is compliant with Parts 15, 22 of the FCC Rules.

Operation of this device is subject to the following two conditions:

1. This device may not cause harmful interference, and
2. This device must accept any interference received, including interference that may cause undesirable operations.

FCC guidelines stipulate that the antenna should be more than 1.5cm (0.6") from all persons.

#### **FCC RF EXPOSURE COMPLIANCE**

In August 1996 the Federal Communications Commission (FCC) of the United States with its action in Report and Order FCC 96-326 adopted an updated safety standard for human exposure to radio frequency (RF) electromagnetic energy emitted by FCC regulated transmitters. Those guidelines are consistent with the safety standard previously set by both U.S. and international standards bodies. The design of this phone complies with the FCC guidelines and these international standards.

Use only the supplied or an approved antenna. Unauthorized antennas, modifications, or attachments could impair call quality, damage the phone, or result in violation of FCC regulations.

**This device has been tested for FCC RF exposure hand and body SAR compliance with the CDC-650 CDMA modem organizer. In order to comply with FCC RF exposure requirements, the device must be operated with the CDC-650 CDMA modem organizer. The use of this device in any other type of host configuration may not comply with FCC RF exposure requirements and should be avoided. During operation, a 1.5cm separation distance should be maintained between the antenna, whether extended or retracted, and the user's/bystander's body (excluding hands, wrists, feet, and ankles) to ensure FCC RF exposure compliance.**

### **CAUTION**

Unauthorized modification or change not expressly approved by C-motech Co., Ltd. could void compliance with regulatory rules and thereby your authority to use this equipment.

### **WARNING (EMI)**

This equipment has been tested and found to comply with the limits pursuant to Part 15, 22 of the FCC rules. These limits are designed to provide reasonable protection against harmful interference in an appropriate installation. This equipment generates, uses, and can radiate radio frequency energy and, if not installed and used in accordance with the instructions, may cause harmful interference to radio communication. However, there is no guarantee that interference will not occur in a particular installation. If this equipment does cause harmful interference to radio or television reception, which can be determined by turning the equipment off and on, the user is encouraged to try to correct the interference by one or more of the following measures:

- Reorient or relocate the receiving antenna.
- Increase the separation between the equipment and the receiver.
- Connect the equipment into an outlet on a circuit different from that to which the receiver is connected.
- Consult the dealer or an experienced radio/TV technician for help.

### Safety and Notices

#### **Important Notice**

Because of the nature of wireless communications, transmission and reception of data can never be guaranteed. Data may be delayed, corrupted (i.e., have errors), or be totally lost.

Although significant delay or losses of data are rare when wireless devices such as the CDC-650 CDMA modem are used in a normal manner with a well-constructed network, they should be used in situations where failure to transmit or receive data could result in damage of any kind to the user or any other party, including but not limited to personal injury, death, or loss of property.

C-motech Co., Ltd. accepts no responsibility for damages of any kind resulting from delays or errors in data transmitted or received using the CDC-650 CDMA modem or failure of CDC-650 CDMA modem to transmit or receive such data.

#### **Safety and Hazards**

Do not operate the CDC-650 CDMA modem in areas where blasting is in progress, where explosive atmospheres may be present, near medical equipment, life support equipment, or any equipment which may be susceptible to any form of radio interference.

In such areas, the CDC-650 CDMA modem **MUST BE POWERED OFF.**

It can transmit signals that could interfere with this equipment.

Do not operate the CDC-650 CDMA modem in any aircraft, whether the aircraft is on the ground or in flight. In aircraft, the CDC-650 CDMA modem **MUST BE POWERED OFF.**

When operating, it can transmit signals that could interfere with various onboard

systems.

The driver or operator of any vehicle should not operate the CDC-650 CDMA modem while in control of a vehicle. Doing so will detract from the driver or operator's control and operation of that vehicle. In some jurisdictions, operating such communications devices while in control of a vehicle is an offense.

### **POTENTIALLY UNSAFE AREAS**

#### **Posted facilities**

- Turn off this modem in any facility or area when posted notices require you to do so.

#### **Blasting areas**

- Turn off Modem where blasting is in progress. Observe restrictions and follow any regulations or rules.

**Potentially explosive atmospheres:** Turn off Modem when you are in any area with a potentially explosive atmosphere. Obey all signs and instructions.

Sparks in such areas could cause an explosion or fire, resulting in bodily injury or death.

Areas with a potentially explosive atmosphere are often but not always clearly marked.

They include:

- fuelling areas such as gas or petrol stations
- below deck on boats
- transfer or storage facilities for fuel or chemicals
- vehicles using liquefied petroleum gas, such as propane or butane
- areas when the air contains chemicals or particles such as grain, dust or metal powders
- any other area where you would normally be advised to turn off your Modem.

# **CDMA 1xEV-DO CardBusModem Driver Installation guide (CDC-650)**

All data and information contained in or disclosed by this document are confidential and proprietary information of C-motech Incorporated, and all rights therein are expressly reserved. By accepting this material, the recipient agrees that this material and the information contained therein are held in confidence and in trust and will not be used, copied, reproduced in whole or in part, nor its contents revealed in any manner to others without the express written permission of C-motech Incorporated.

This information provided in this document is provided on an "as is" basis.

In no event will C-motech Incorporated be liable for any damages arising directly or indirectly from any use of information contained in this document.

Information in this document is preliminary and subjected to change without any notice.

### Contact Information

If you have any technical queries about this manual, please contact:

Email: [powerko@cmotech.com](mailto:powerko@cmotech.com)

### Revision History

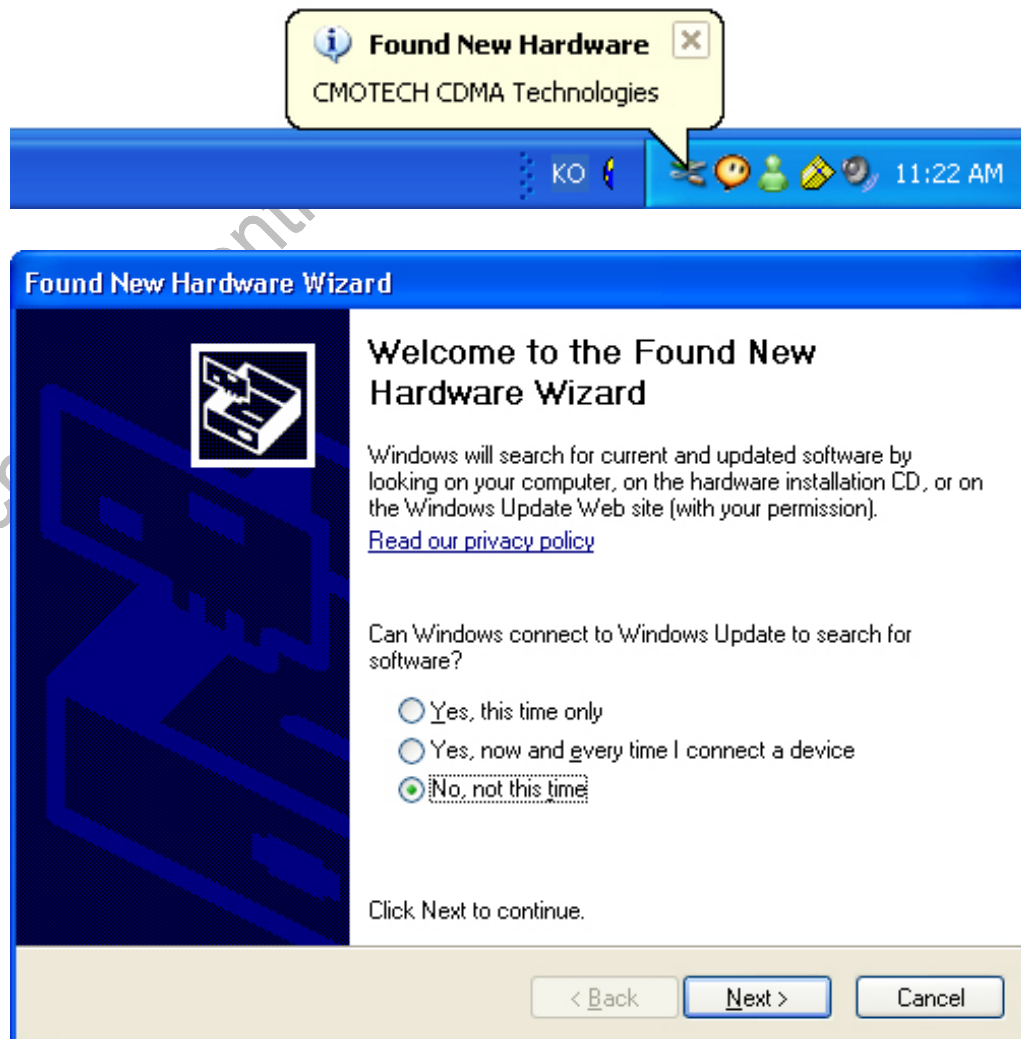
Level	Date	Description
0.1	Jan. 19, 2007	Initial Release



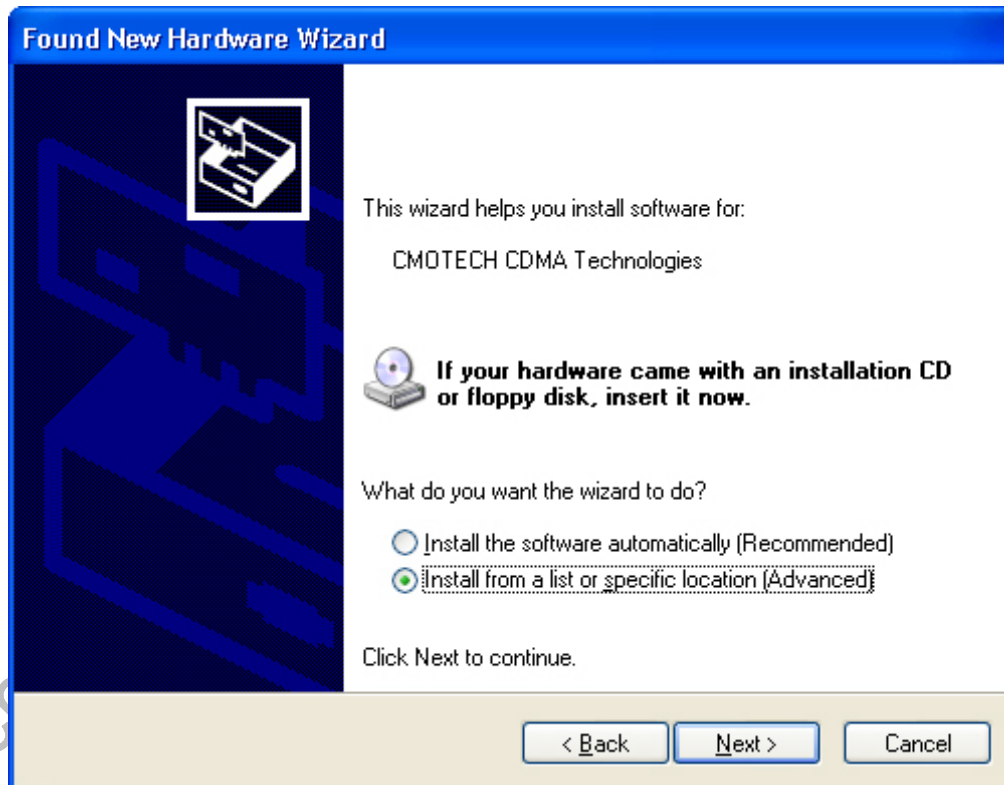
## Install Modem Driver

Before you can begin using the CDC-650 CDMA 1x/EVDO CardBusModem, you must:

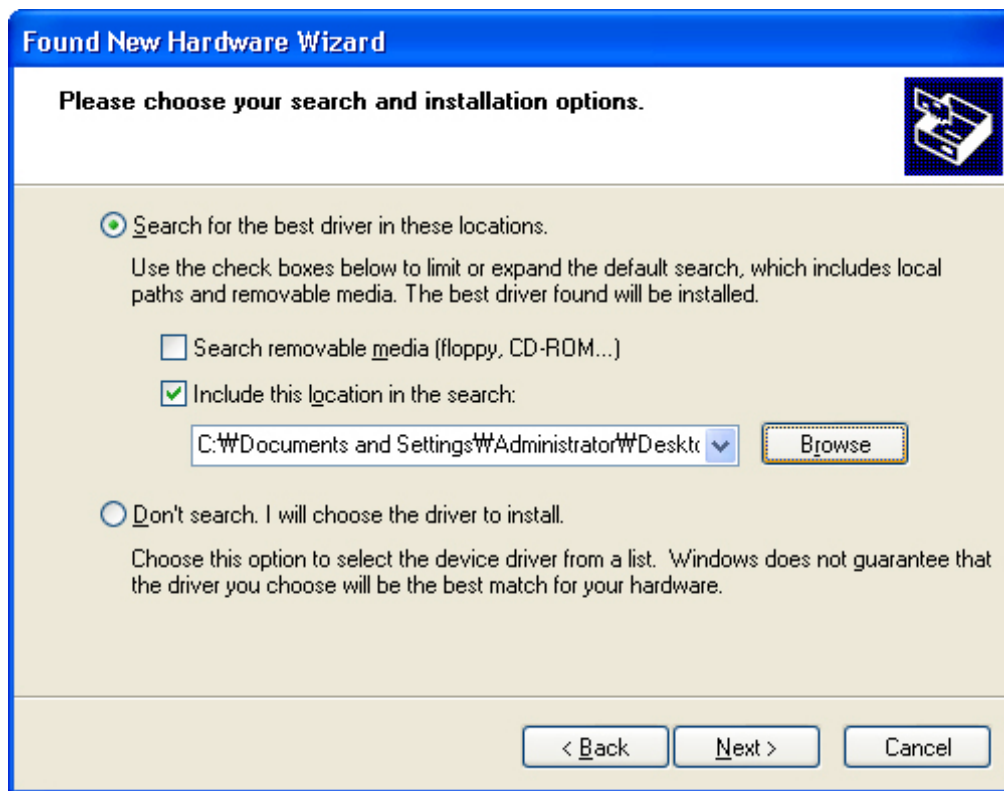
### Manual modem driver install



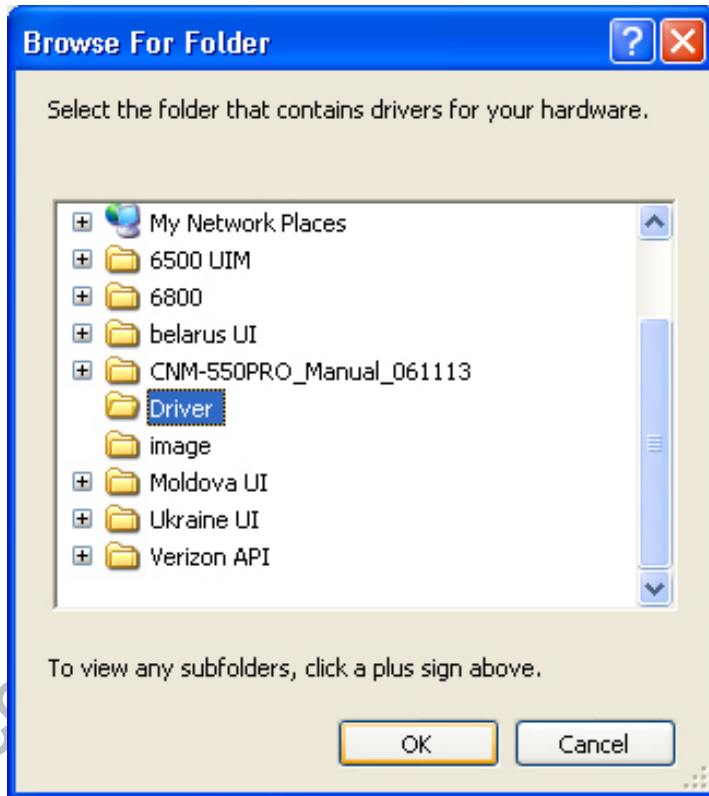
Install from a list or specific location



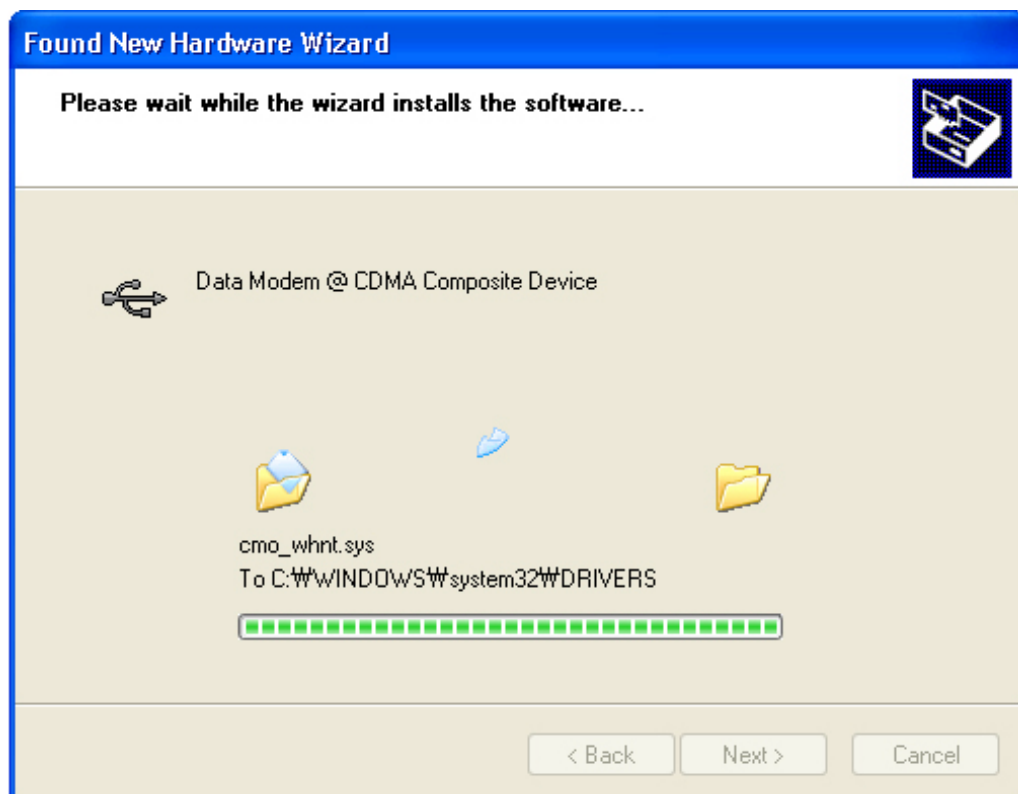
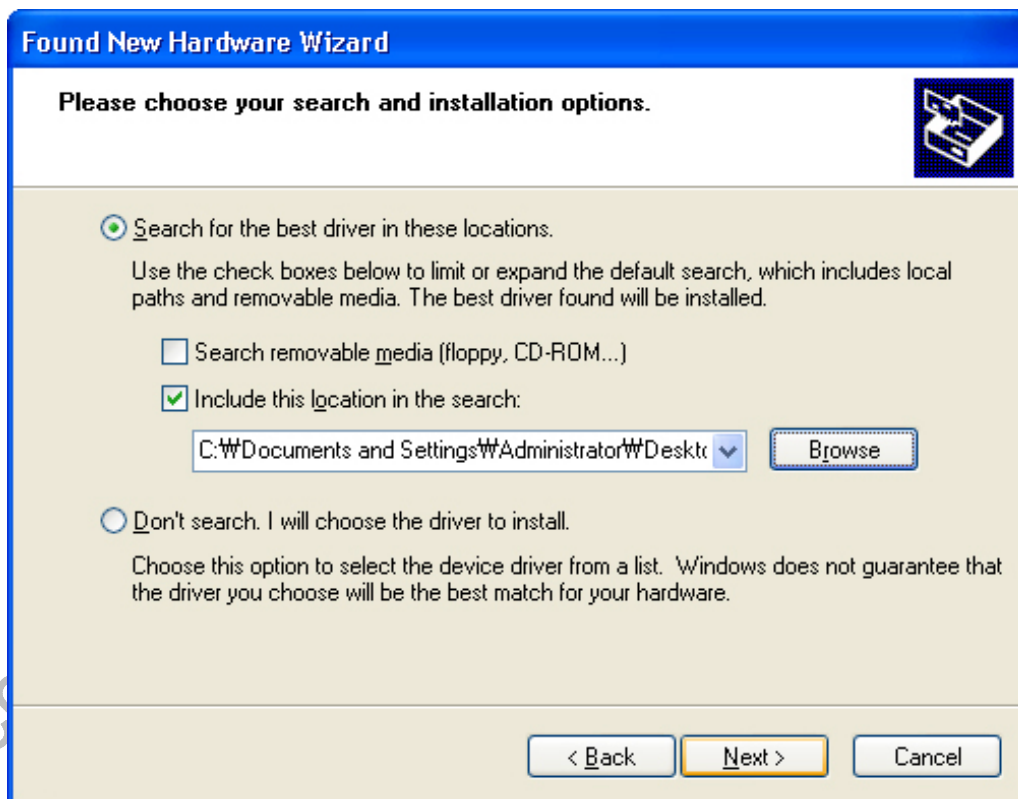
click 'browse'

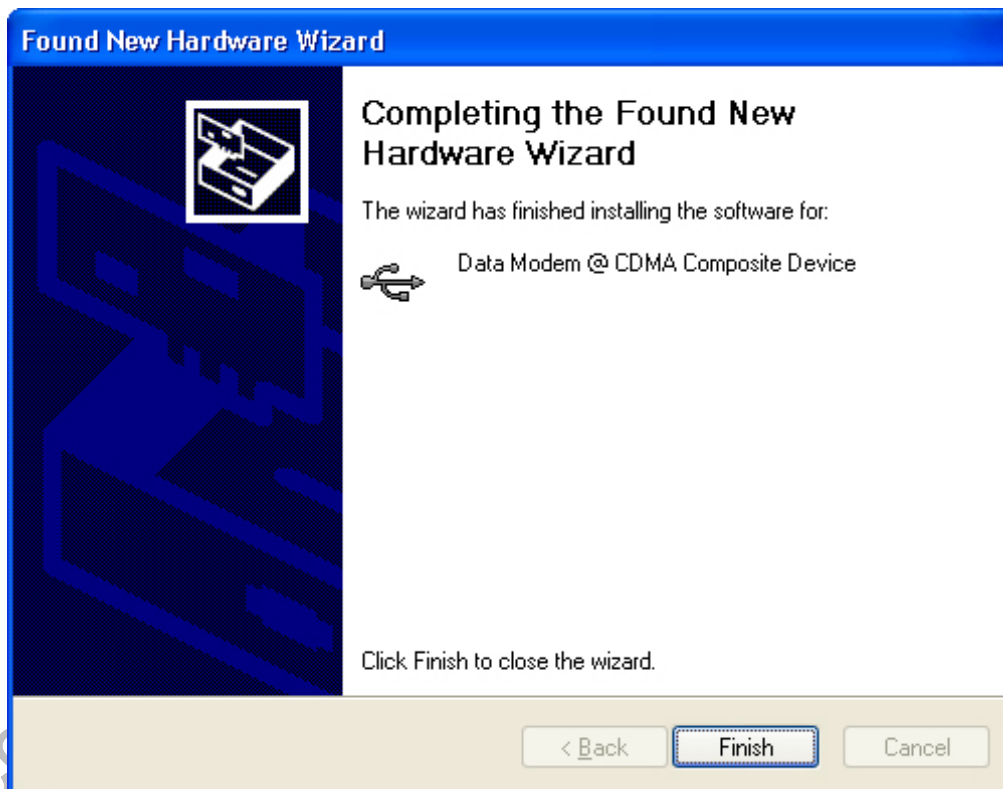


select driver folder



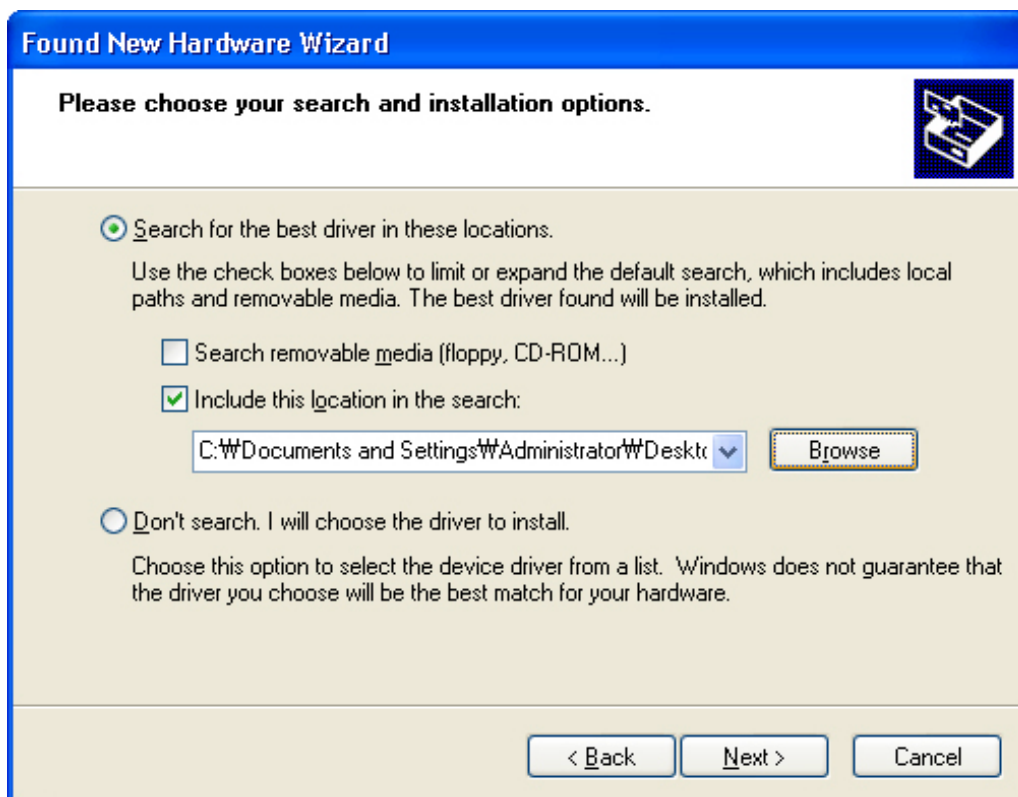
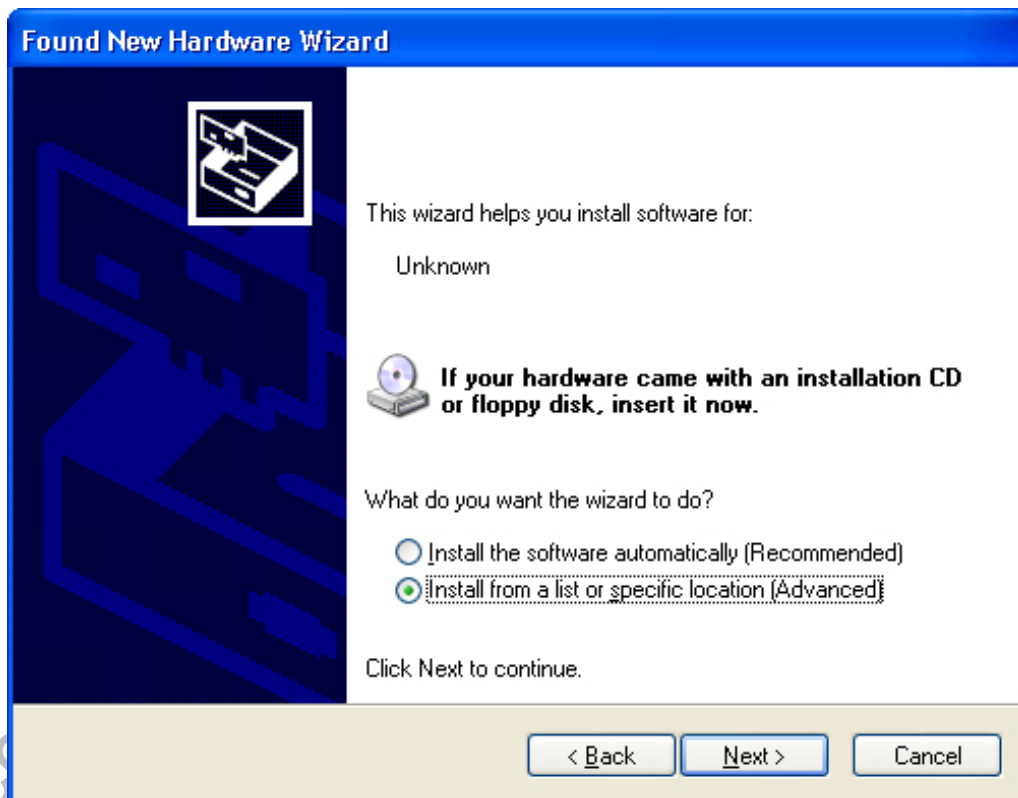
Click "Next" button.



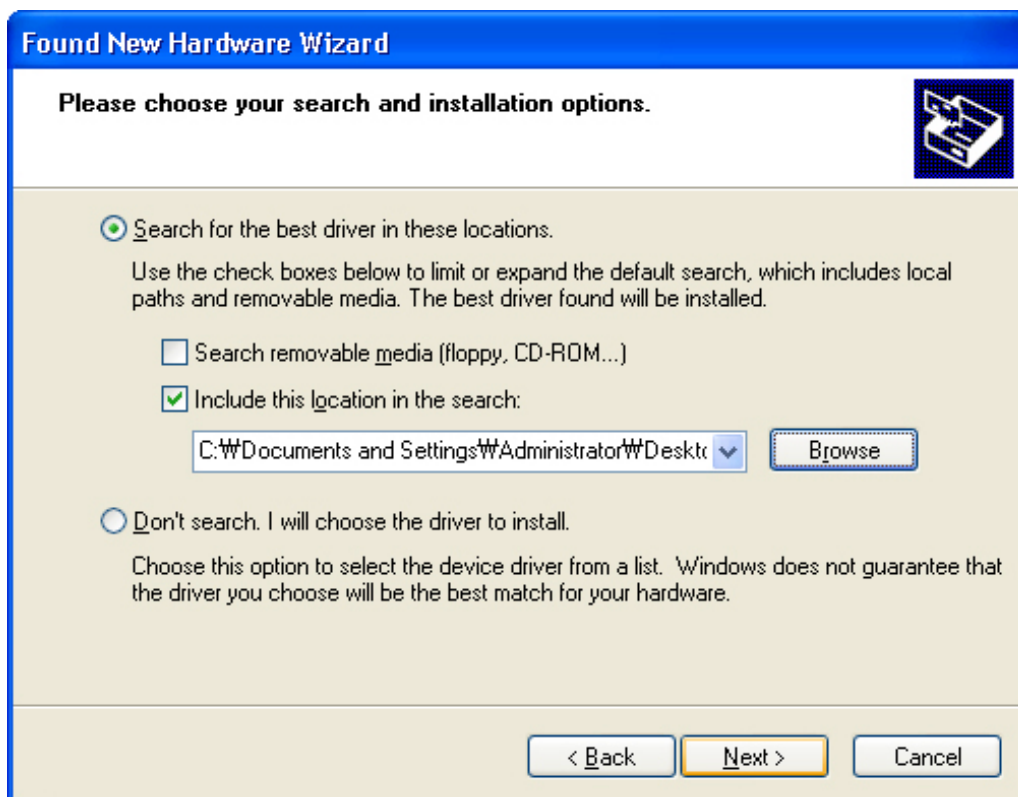
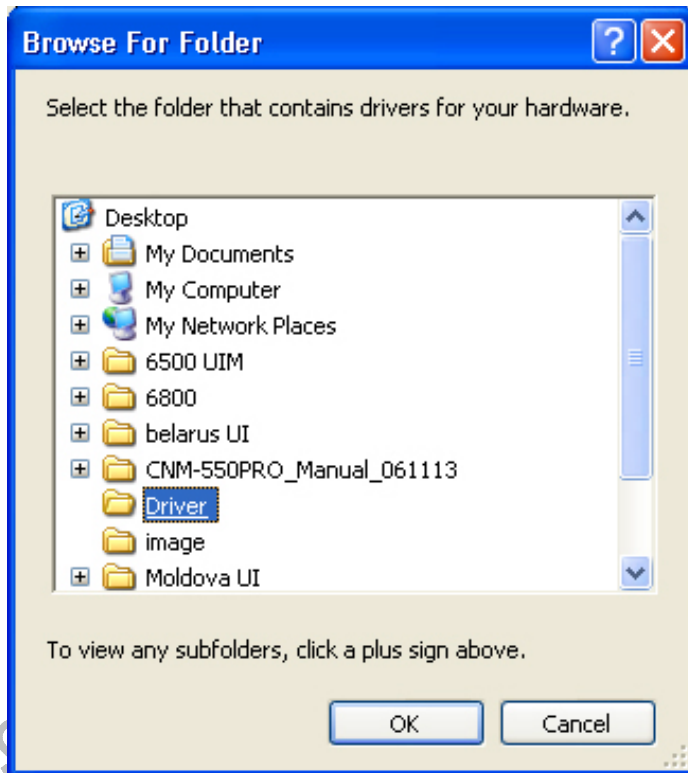


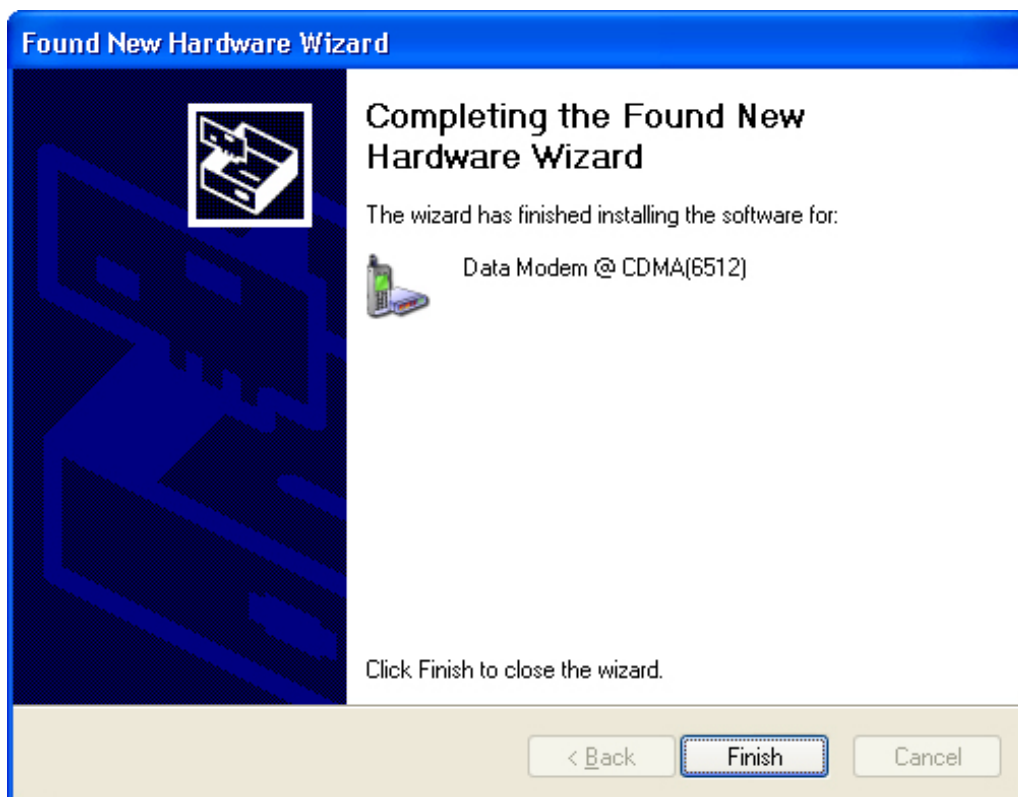
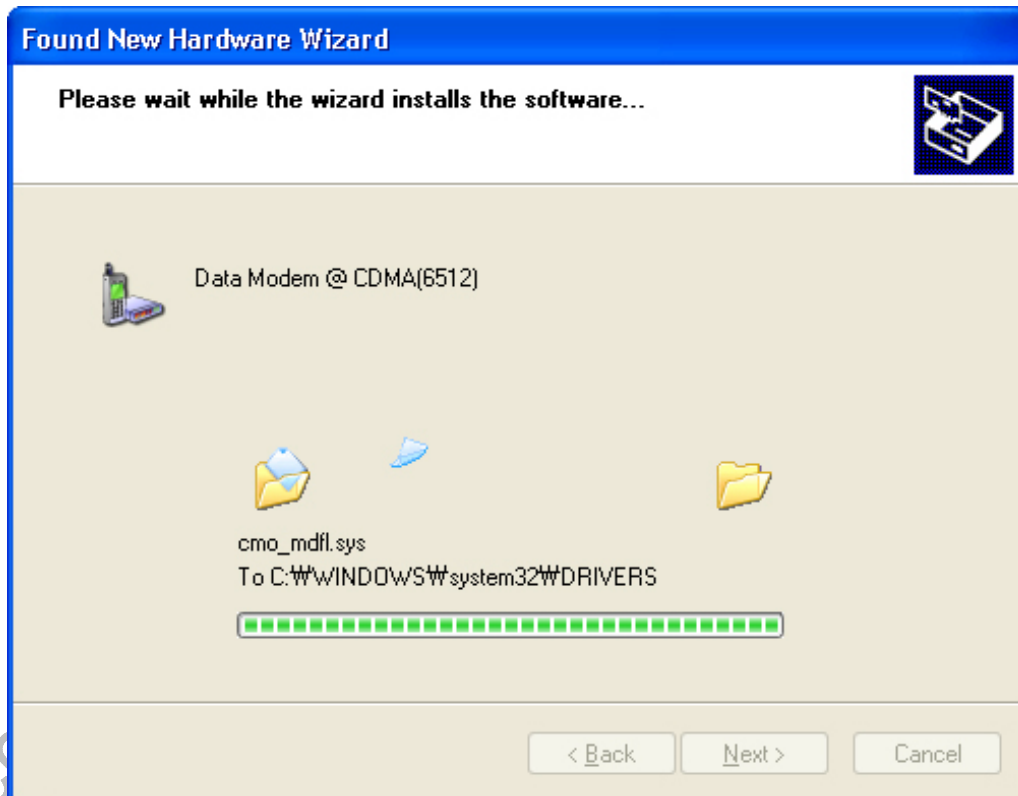
more 2 time install, you can see MCCI driver install complete.



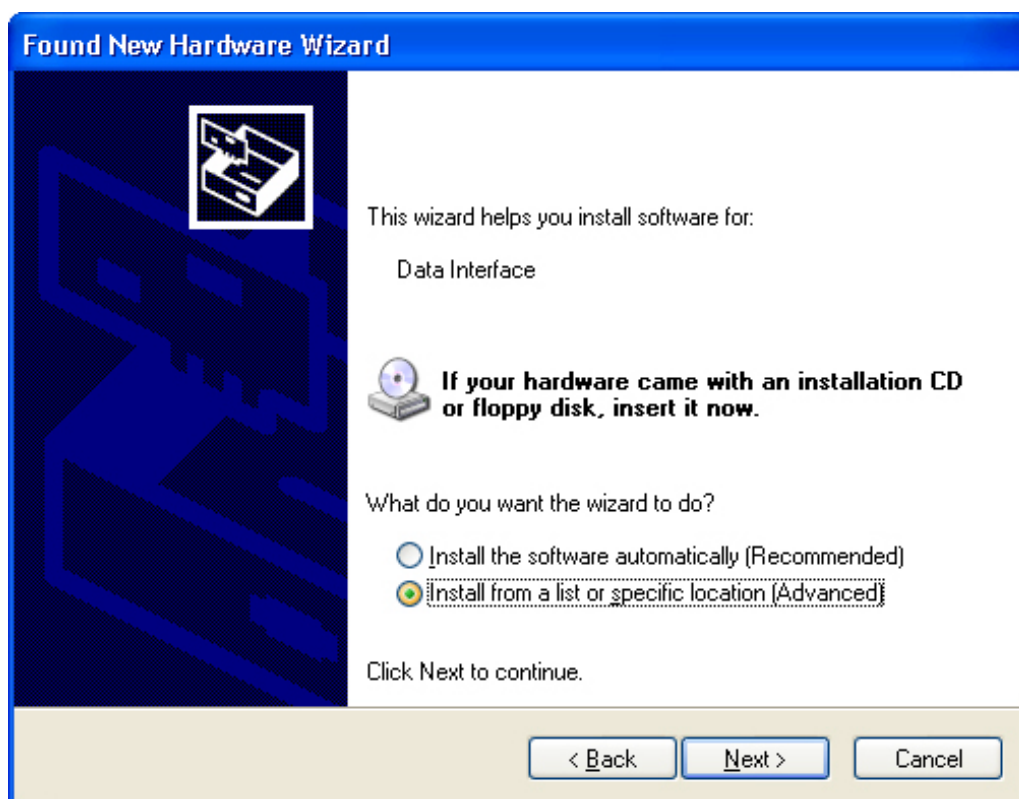


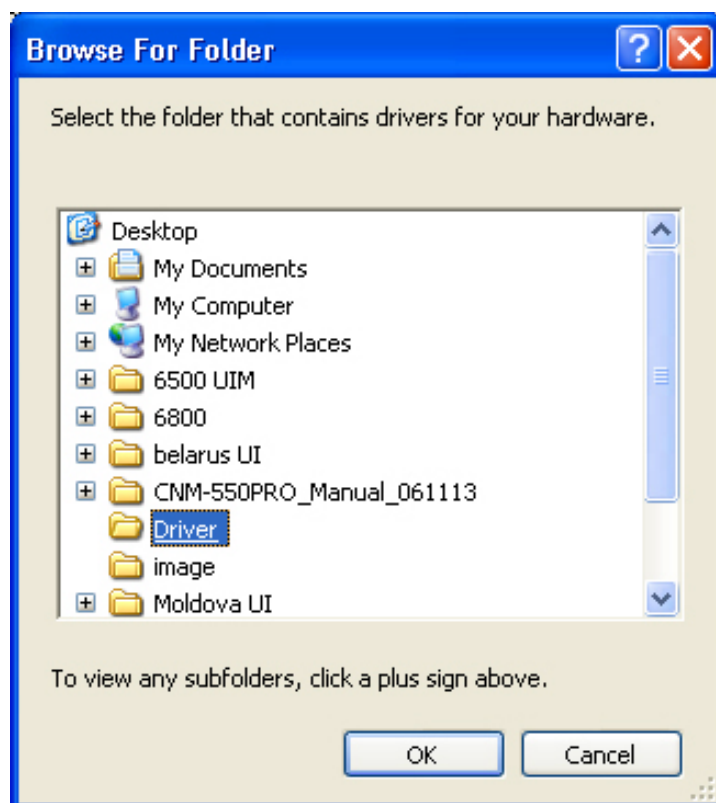
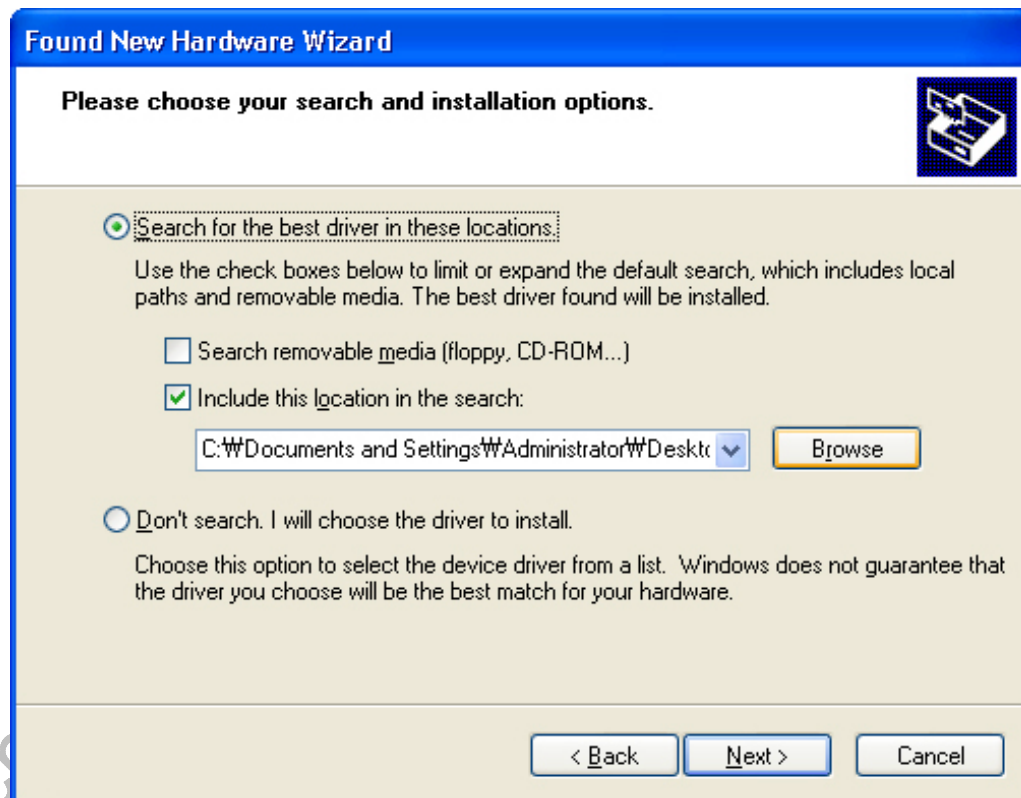


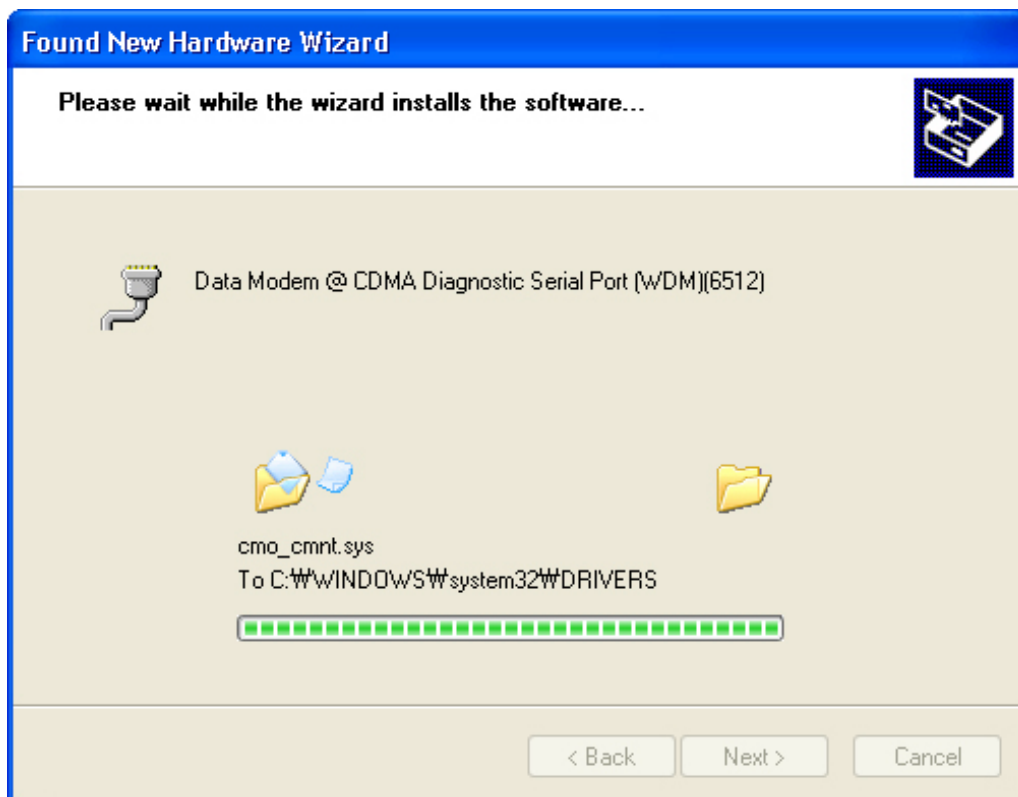
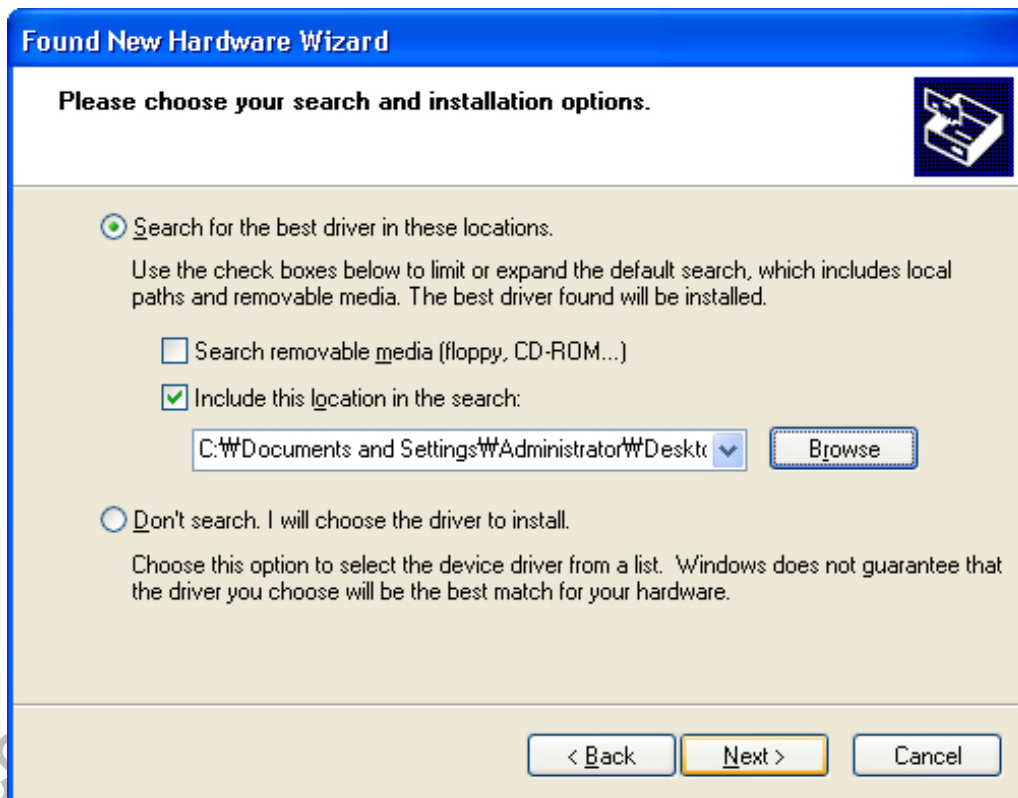


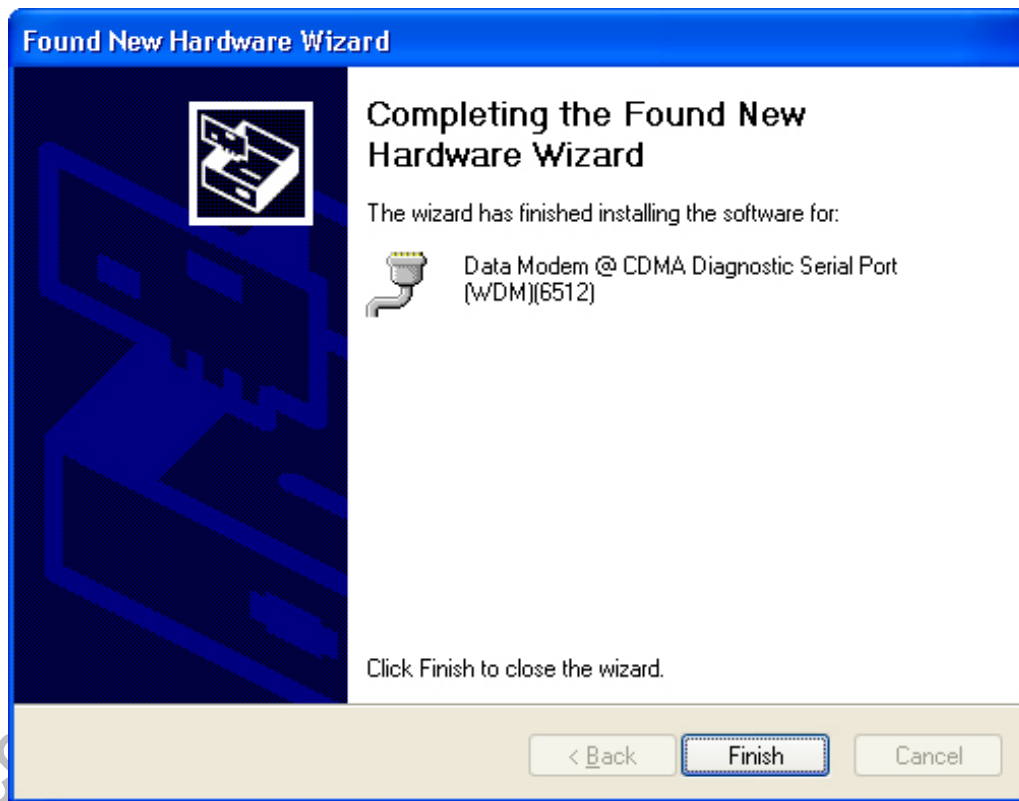




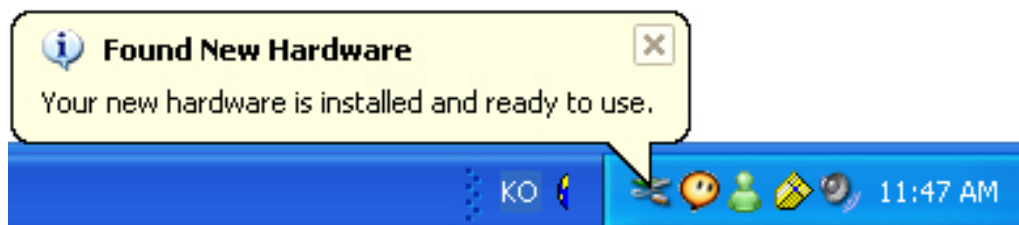








Driver Install completed.



**! Notice**

CardBus products not support PDA application.

C-motech Confidential