

Test Procedure

1) Getting Started

- i. Power-up the laptop.
- ii. Insert Freewing into the USB port.
- iii. Execute 'Cm Test.exe' file.
- iv. Select correct COM port.
- v. Confirm that correct COM port is selected.
- vi. Information will be displayed repeatedly.

2) How to Power On/Off the Transmit Power

- i. To turn on the transmit power, click the 'start' button.
- ii. To turn off the transmit power, click the 'stop' button.

3) How to change Channels

- i. To change the Tx channels (1013, 363,777), Put Tx channel number into the blank beside of Tx channel.
For changing channel, Modem status must be in 'No service' state.

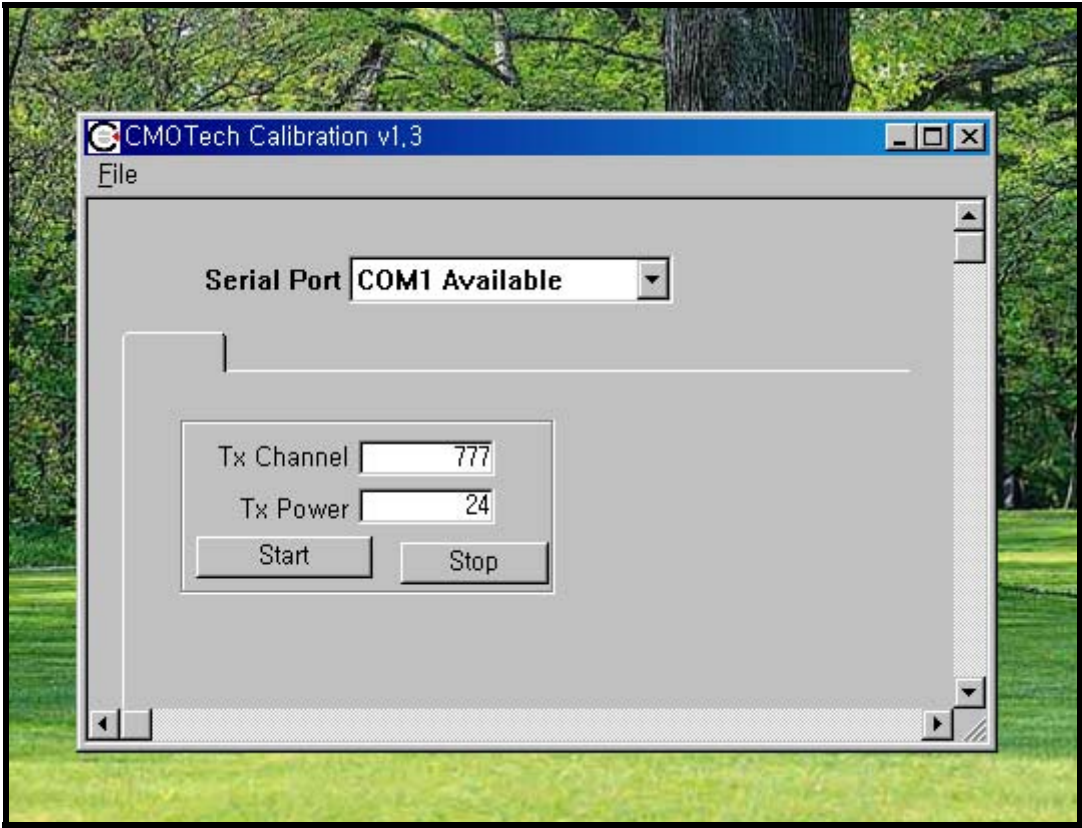
4) How to change Transmit Power Level

- i. To change the Tx power level, Put Tx power number into the blank beside of Tx power.
In the test procedure, Tx power level was set for 24dBm

View of Cm Test Program

CCMG-1x800	파일 폴더	2005-05-30 오후 ...
ApplicationSetting	1KB XML 문서	2003-03-10 오후 ...
AutoTestSetting	2KB XML 문서	2003-02-20 오전 ...
CallibrationSetting	9KB XML 문서	2004-03-22 오후 ...
CCMG1x800	10KB XML 문서	2004-03-22 오후 ...
CmTest	940KB 응용 프로그램	2005-05-04 오전 ...
Lastmdl.mdl	1KB MDL 파일	2003-03-05 오후 ...
lastswver	1KB DAT 파일	2002-11-25 오후 ...
lastvendor	1KB DAT 파일	2002-11-25 오후 ...
Mdlist	1KB DAT 파일	2003-02-14 오후 ...
SerialDMDLL	6KB LIB 파일	2004-11-02 오후 ...
SerialDMDLL.dll	200KB 응용 프로그램 확장	2004-11-02 오후 ...

View of ‘Cm Test.exe’ file



Main view of Program

Description of Program

Start : Turn on transmit power by force.

Stop : Turn off transmit power by force.