



C-motech CGU628 User Manual

User program Install

Install

Modem USB port connection. And Install is worked automatically.

User program installs a Modem driver to User computer

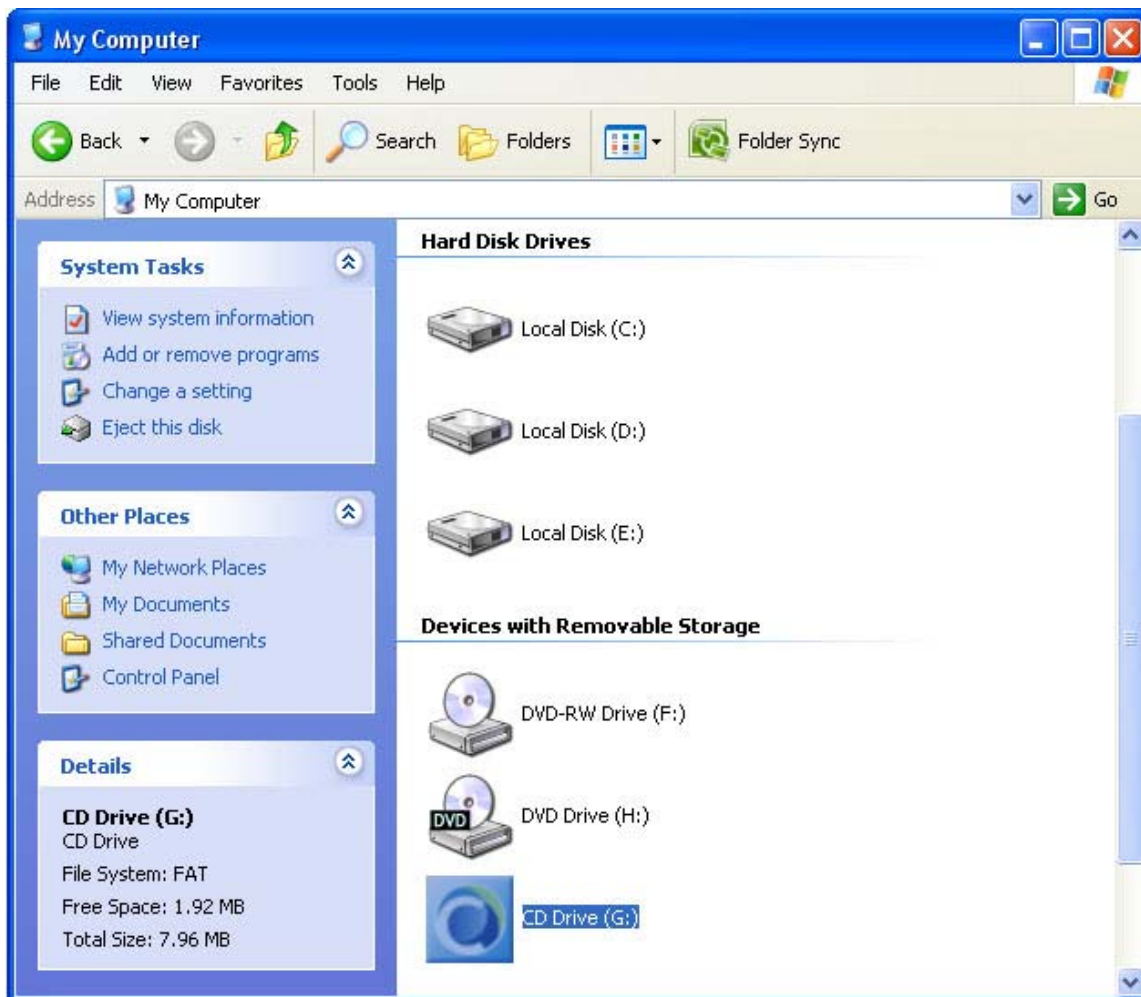
Install program support **Windows 2000, Windows XP, Vista 32bit, Vista 64bit.**

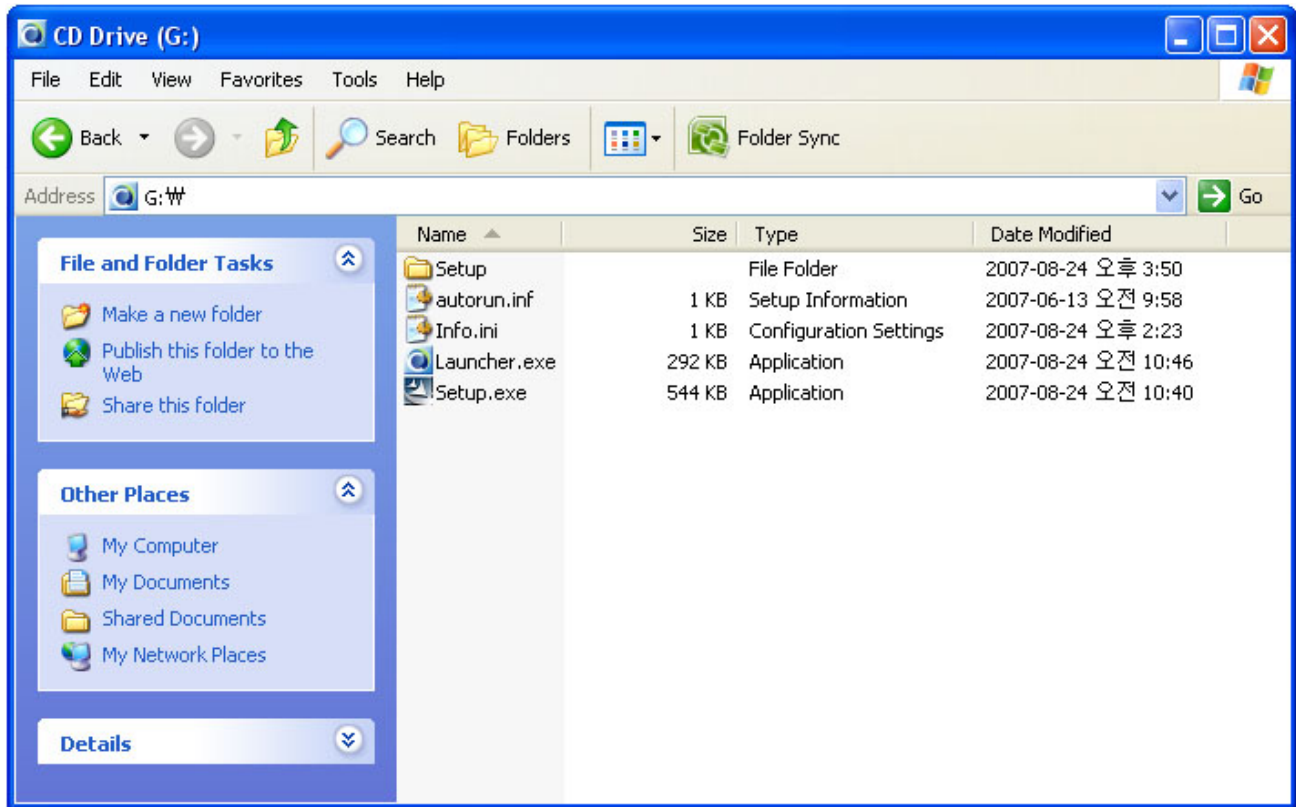
Install start

You can start connect a Modem to USB port, It starts automatic Installation.

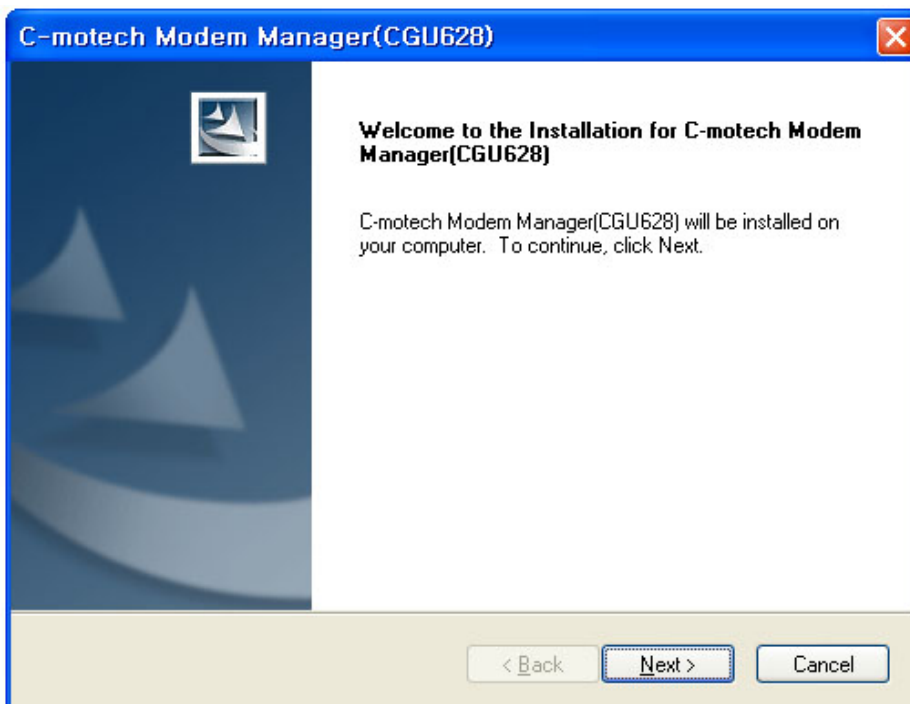


If an automatic Installation is not working. Please double click the Setup.exe at CD Drive in My computer directory's "Portable Devices"

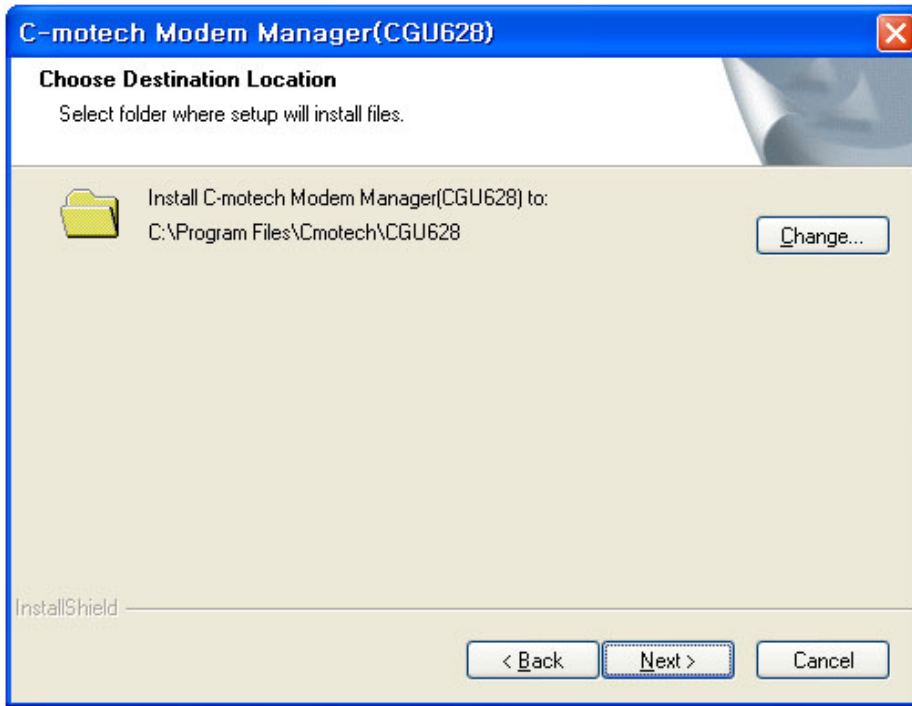




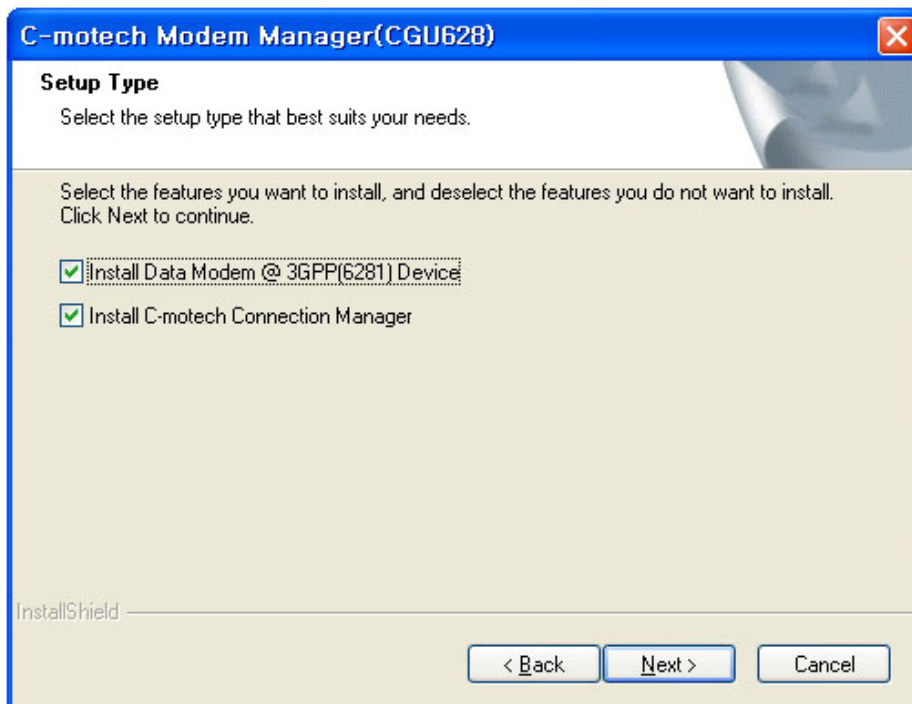
C-motech Modem Manager Install Wizard operation, Push 'Next(N)' button



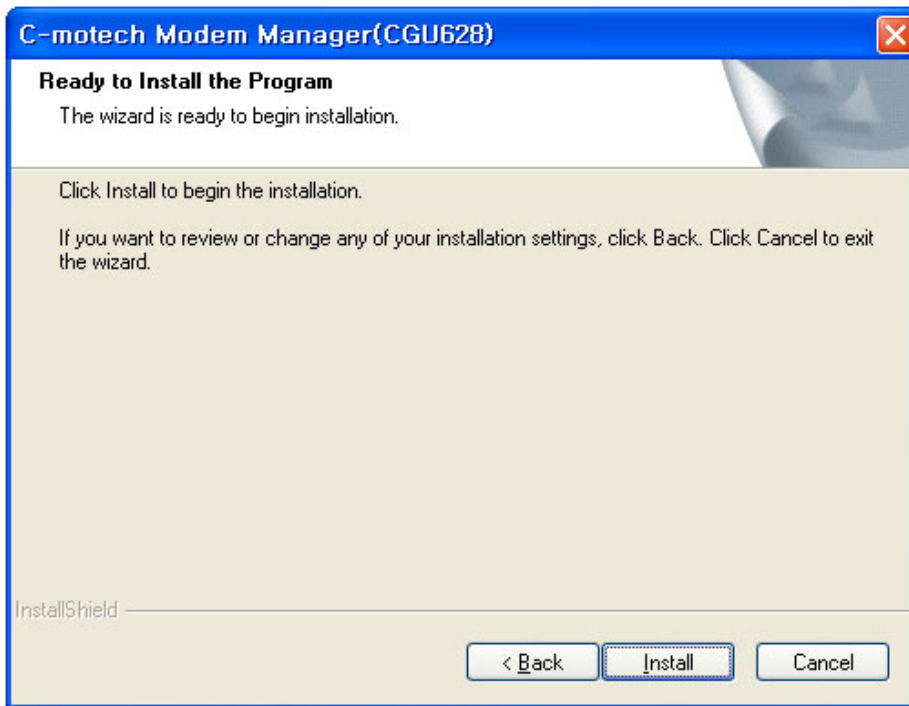
To change Install path, Please select a path for 'Change(C)' button click. If you want a standard Install, Push 'Next(N)' button.



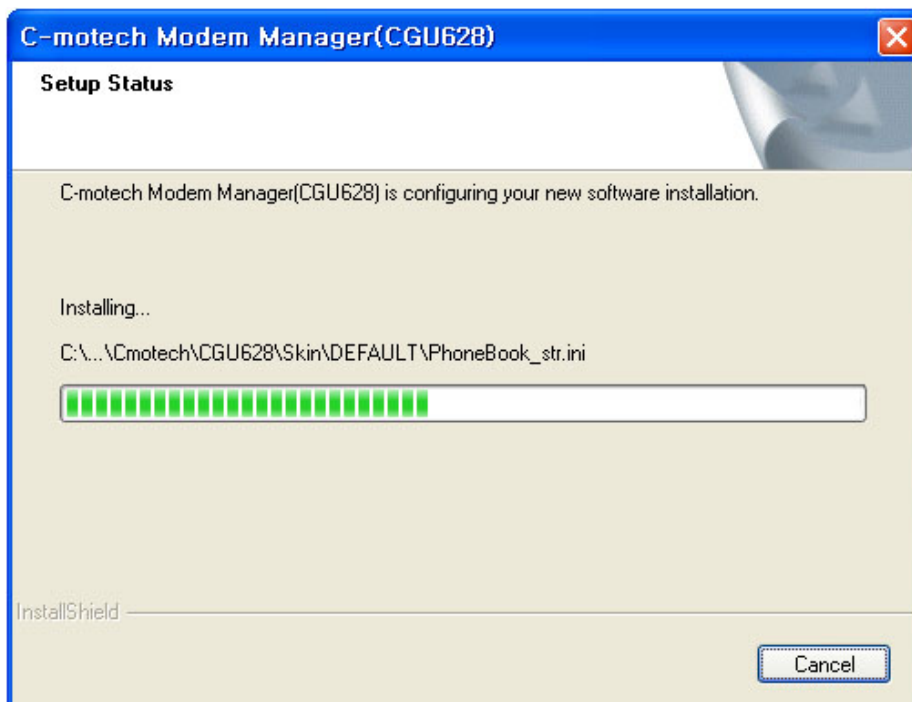
Function Selected for Install and push 'Next(N)' button.



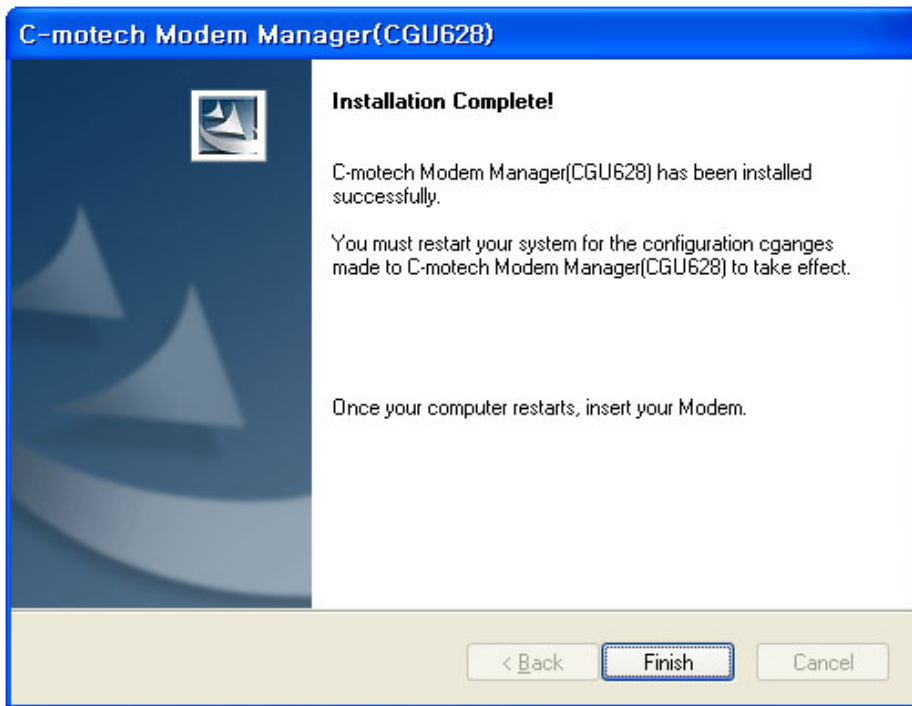
'Install(I)' button push



It displays the Install process status.



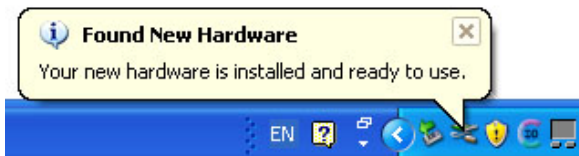
Push the Install 'complete' button.



Install completed, and Shortcut Icon is generated to Window



After User program Install completed, The Modem driver is Installed automatically.
Finally the driver Install completed. The display is showing below..



Modem connection

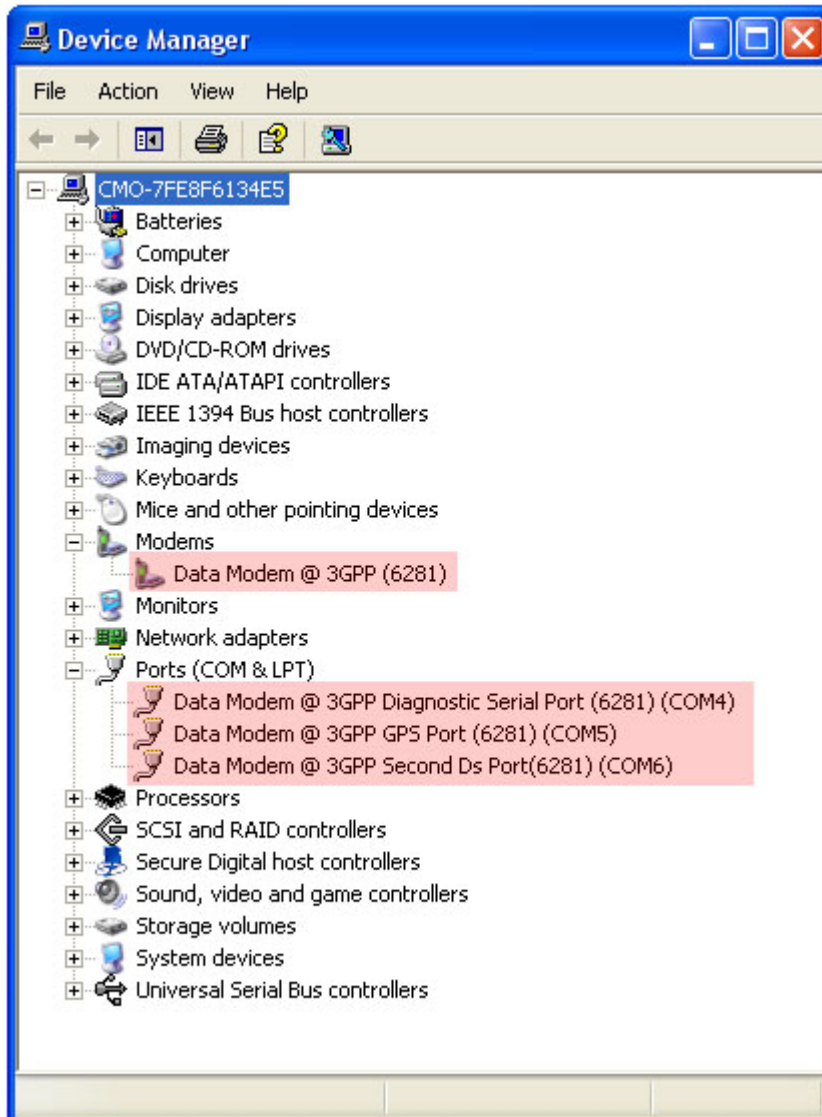
Connection Method

Insert to USB port of Modem Laptop or Desk top PC for connection.

Modem direct connection is not suitable to you. Please use USB extension line.

Check the LED power lamp is on in the Modem.

You can see the Install information in the Hardware Manager of XP window.



User program Use

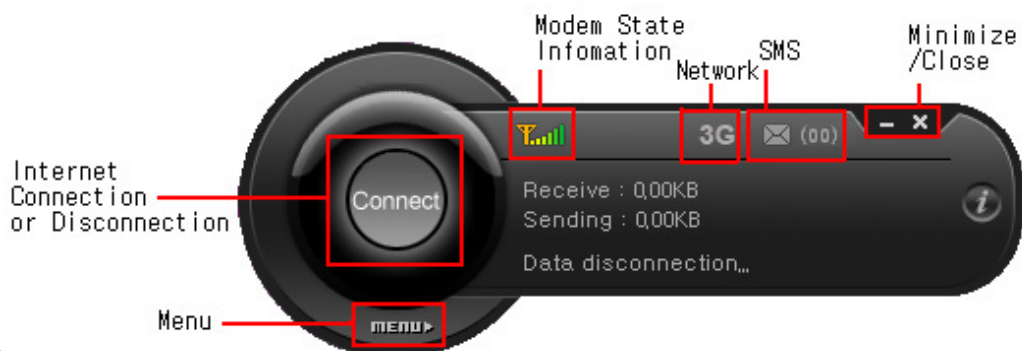


Double click for Icon() at Window.

The program is operated well. And you can see the user program as Main Window. It shows Ready operation and service working status.

Let's see the Main Window control

Main Window



Modem status information Icon

Icon	Mean
	Strength of Signal
	New SMS Message

Tray Icon



Icon of User program is operation status in window task bar .

User program Use

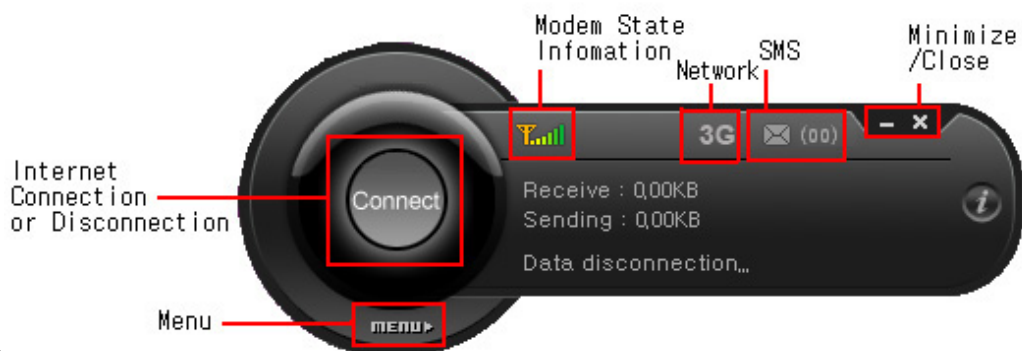


Double click for Icon() at Window.

The program is operated well. And you can see the user program as Main Window. It shows Ready operation and service working status.

Let's see the Main Window control

Main Window



Modem status information Icon

Icon	Mean
	Strength of Signal
	New SMS Message

Tray Icon



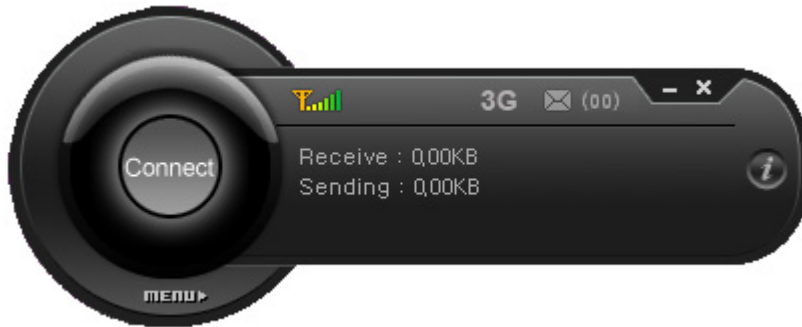
Icon of User program is operation status in window task bar .

Telephone connection network

Network connection



button Click for internet connection.

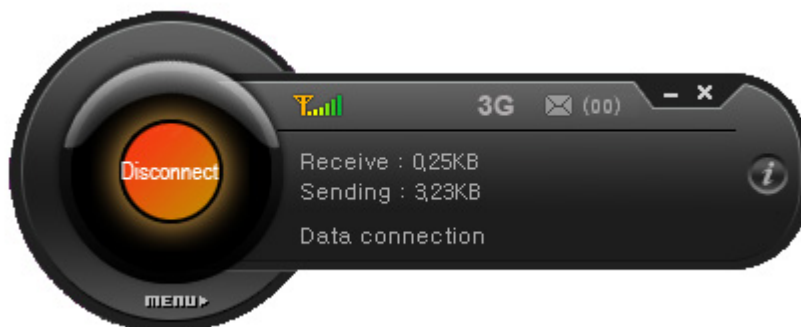


button Click for network connection try.

After the service verification, enroll the network for user.

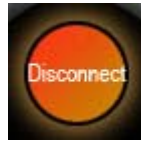


When internet connection is successful case, button is changed to button

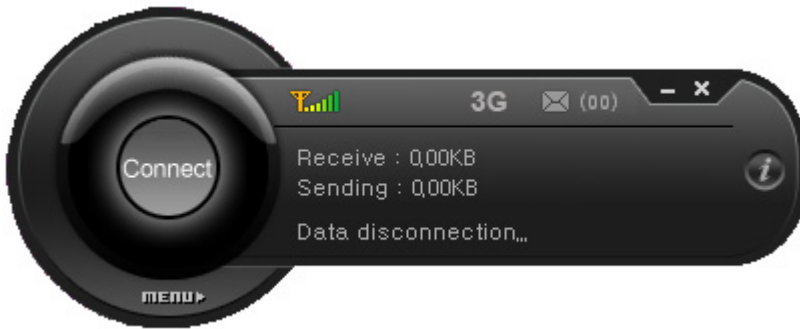


Network connection close

Network connection close

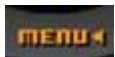


If you want to finish the internet connection, Click button below widow and "data connection disconnected..." message are displayed. And internet connection is finished.



After the quit for the service, the display back to the main status window.

Introduction of Menu



: You can open or close the Menu Window.



(SMS): To read received SMS messages or send SMS messages.



(Phone Book): To save mobile numbers and names.



(Setting Information): General Setting, Roaming Setting, USIM Setting, User Information




(Help): You can see a user manual.

SMS Function

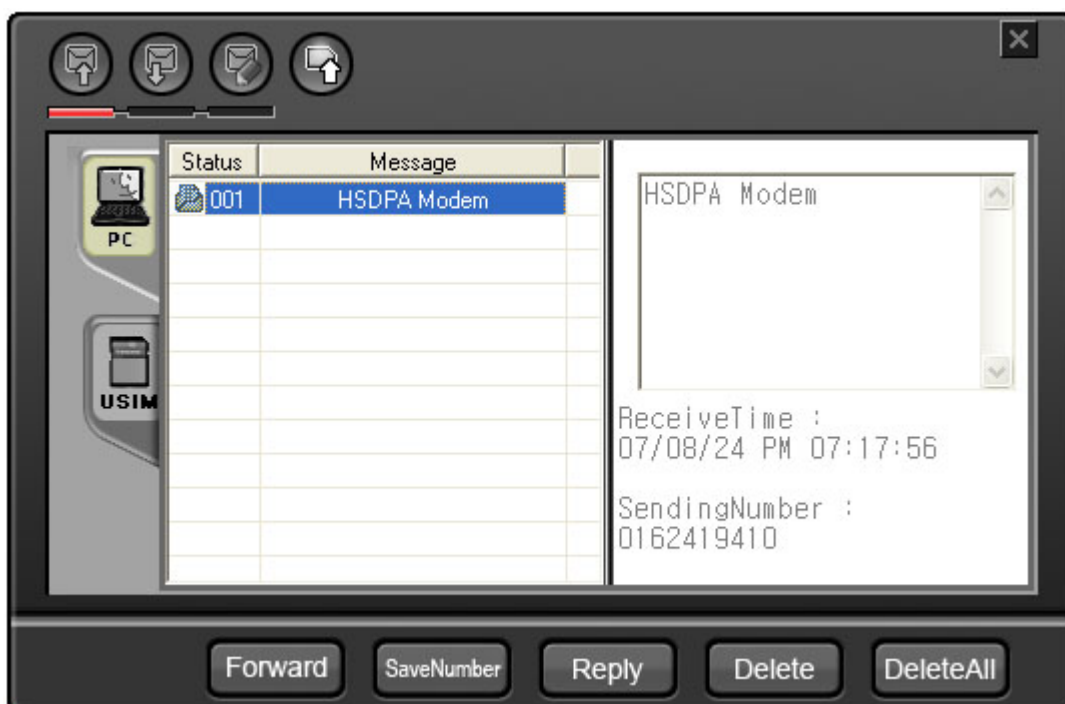
SMS is the function to sending a short text to recipient. It supports writing, reading, USIM save, forwarding, Number save, reply, delete, delete all data functions.

SMS menu

In main Window  (MENU button) ->  (message) button click and SMS Function Use.



At first log in status, The SIM phonebook and SMS information is displayed.



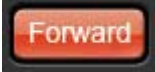


SMS is saved to PC and USIM, A Picture above (activated tap) You can check the current status.

Message write



To make a new text, (new text writing) button Click. (new text writing) button Click. And text Input window is displayed below for short length message. Write a sending text contents and receive number Input and



button. It is possible to send a plural sending service for saved phone book list (numbers) with the same contents.

Name	PhoneNumber

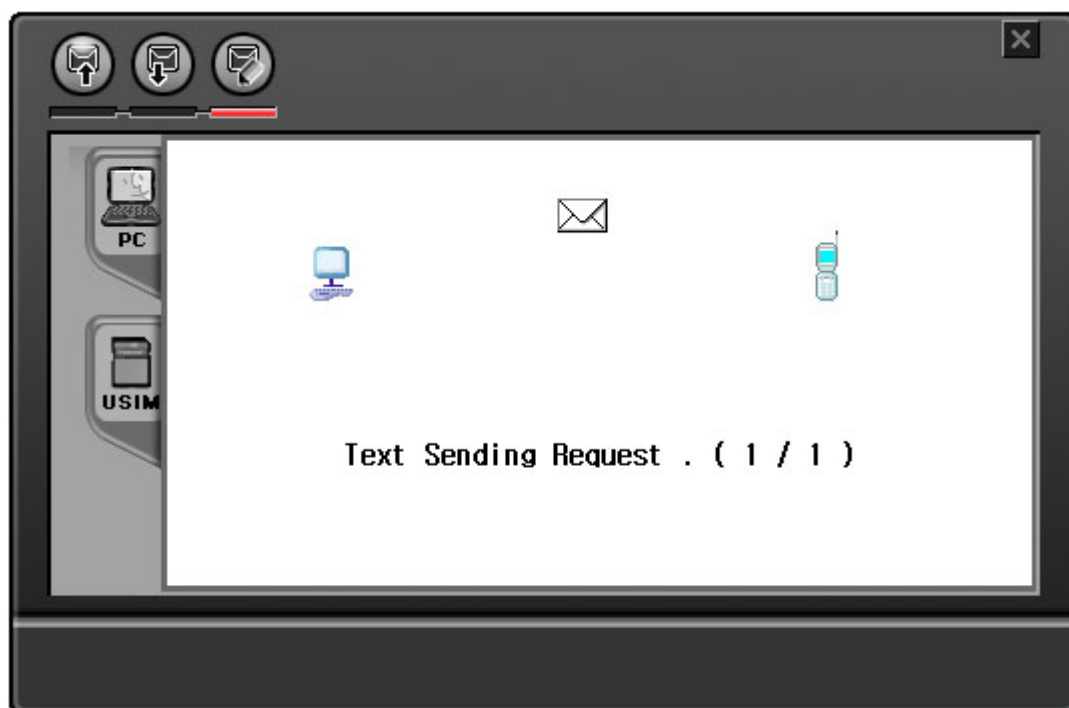
Destination Number

Number	ReceiveNumber
1	010000000000
2	
3	

Short text Message 0/160


Send

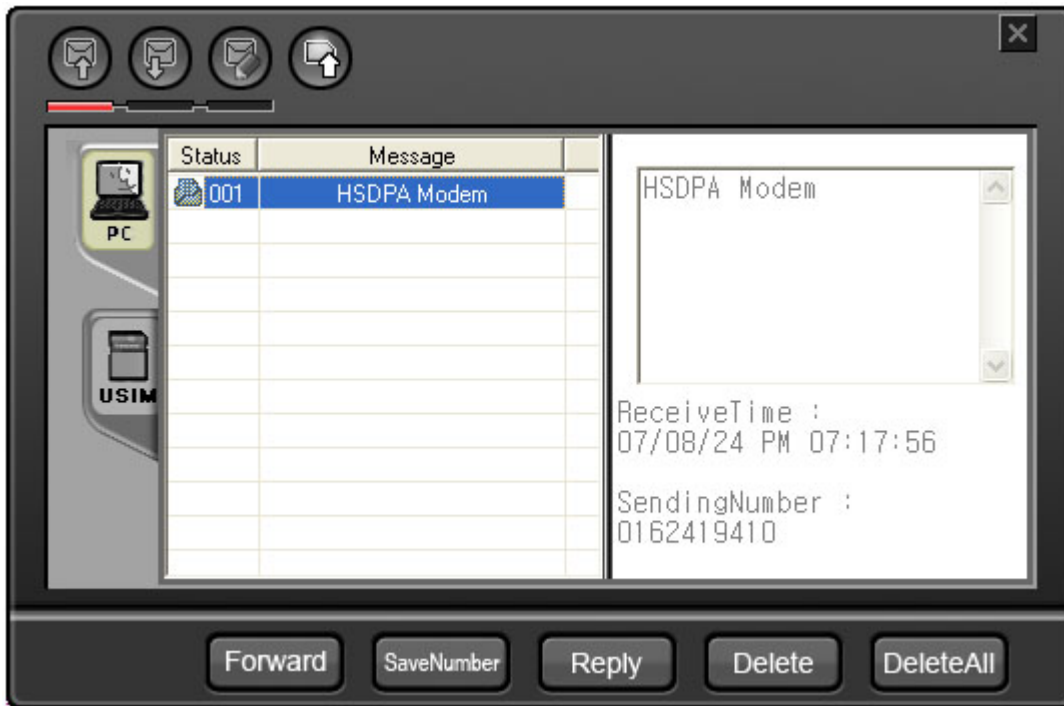
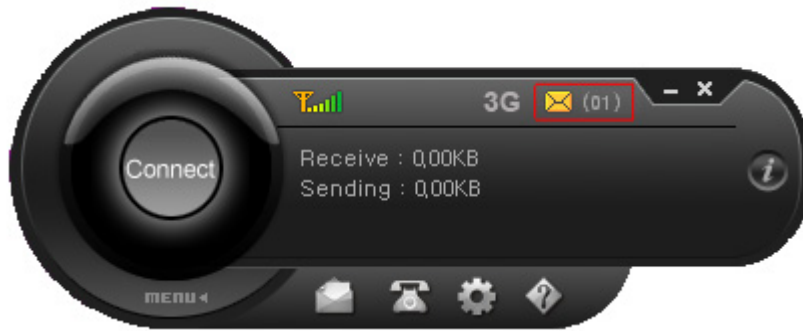
SMS Sending



SMS Receiving

Display for a new text receive for message Alarm window.

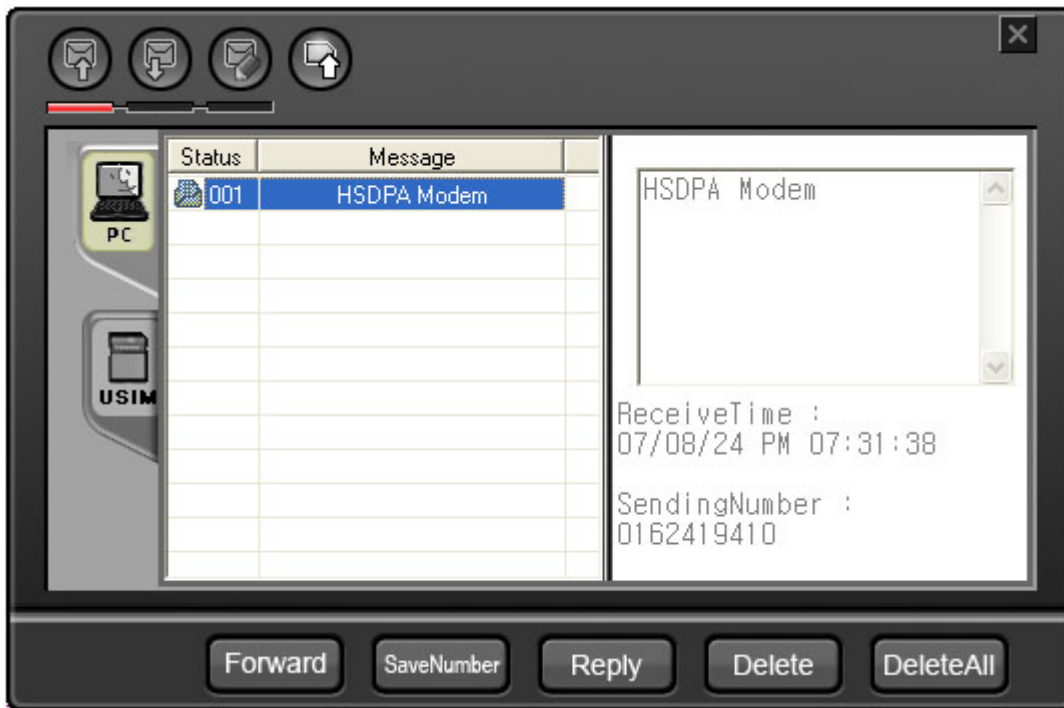
Main Window  Icon number indicates the number of new texts.



Letter Icon is closed for a new text, letter Icon is opened for checked text.

SMS new message Confirm

Received new message can be selected and contents can be confirmed..



SMS Receive Message



Click 'Receive Message' button to check received message, message contents and receiving time, sending number detail information

SMS Received message



'Received message' button click and, Sending messages are shown to list display. And each message can be selected and can check detailed information for a sending time, receive number.

SMS Forwarding

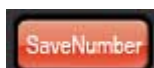


In the box for 'Receiving message' & 'Receive Message', Some designated message can be selected



and, Click button to forwarding the message to another number. Recipient number can be own Modem number is set automatically. And receive number is User input number..

SMS Number save

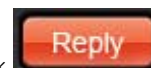


Select the message number to save, Click button and name & etc. information can be Input, Click



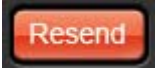
button to save Cellular phone number as a standard number setting.

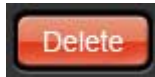
SMS reply



In 'Receive Message', Some designated messages can be selected and click button to send a reply message for Receive Message.

SMS resending

In 'Receiving message', Some designated messages can be selected and click  button to resending the message with receiving number of Receiving message'

SMS delete

Select a list to delete and click button. Click  button to delete total list.

Save to USIM / PC

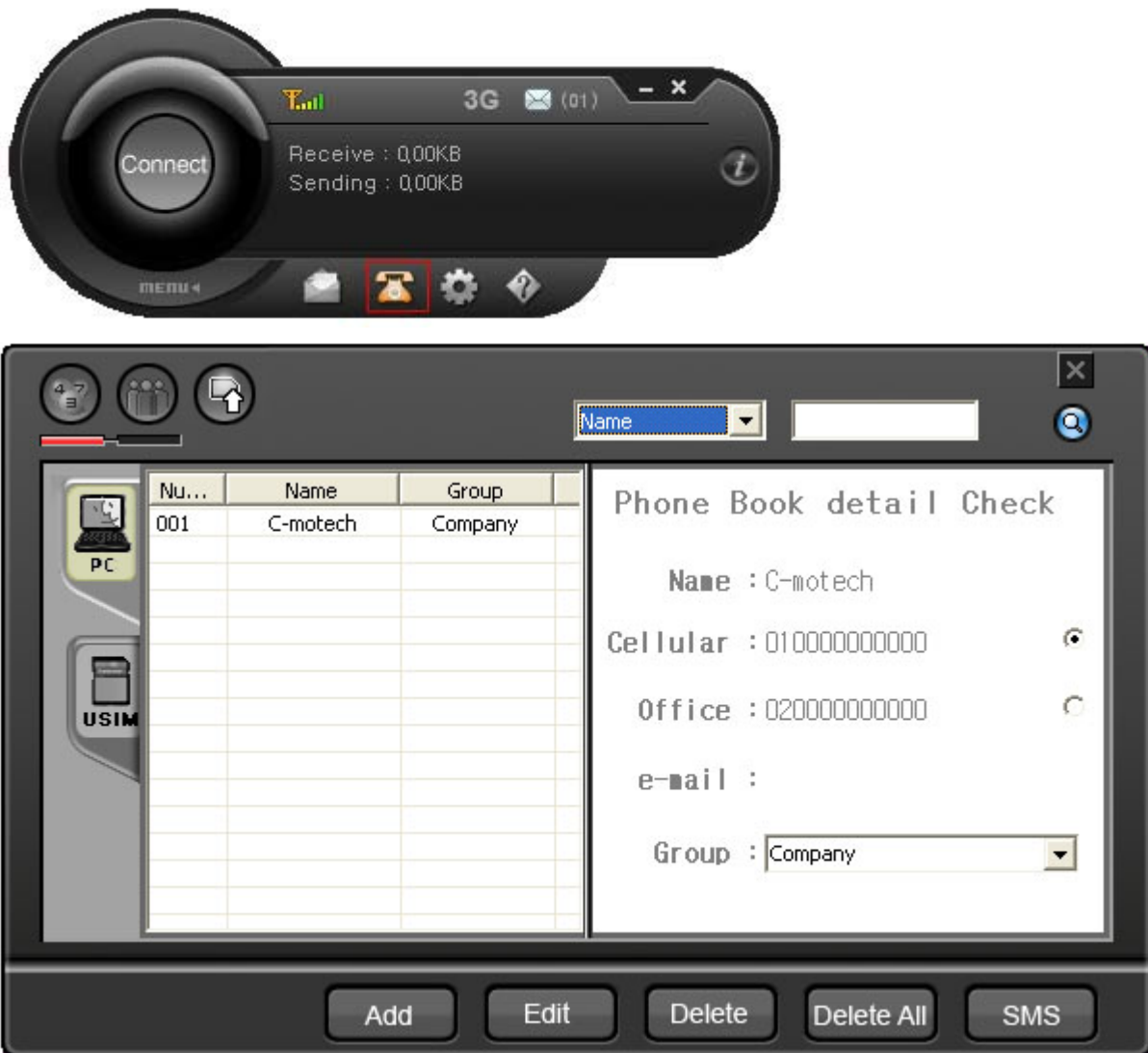
In Receiving/Sending message box, Select messages to save USIM, and click (Save to USIM) and the maximum 20 messages are saved include Receiving/Sending message.



Select to save and click button for USIM data Selection to PC (Save to PC), Data will be saved to PC

Phone Book Use

Phone Book Use



(Telephone number) button for Phone Book Dialogue.



'Phone Book Total Information' button Click for total Phone Book



'group add/delete' button Click new group add or delete.

standard group are undetermined, family, friend, company. And standard group cannot be deleted.



(PC save) or (USIM save)

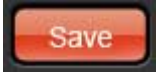
Save PC Phone Book data to USIM or, Phone Book data of USIM can be saved to PC

USIM supports maximum Telephone number 250 and E-mail address can be saved to the maximum up to 80 (Maximum save items are can be changed by USIM types)

Phone Book add

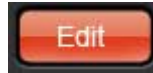


To add Phone Book button click, and input name, Telephone number information

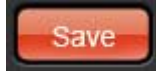


button click, Cellular phone number standard number is saved for basic setting.

Edit

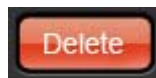


To change Phone Book, Please select Phone Book Edit button Click, And the edit window is



showing. Change information in this page, button Click to save and completed.

Delete



To delete Phone Book, Select Phone Book button Click to delete completely.

Sending SMS




To send a message in Phone Book, Select Phone Book button Click, text sending window is



displayed. In this page text contents and Receiving number can be Input and button Click.

Search

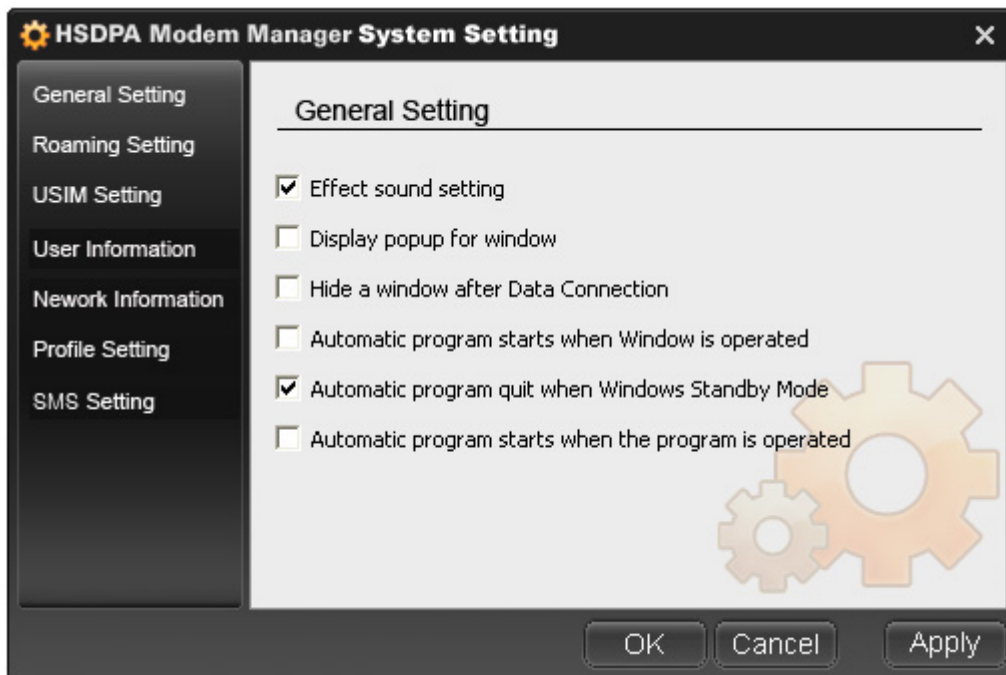
Phone Book can be found by name/Telephone number/group. Upper right window supports search function; and click "Search"  for Phone Book.

Setting Infomation

Setting Infomation

(Setting) Genaral Setting, Roaming Setting, USIM Setting, User Infomation

General Setting



1. Effect sound Setting

Effect sound setting for window open or close effect sound (sound on/off)

2. Always Pop Up status

Windows pop up in the first widow display.

3. Window hidden after the data connection

Program is automatically hidden to tray after the internet connection



4. Automatic program start window start

Window booting and program starts automatically after the Modem connection.

5. Automatic program close for window maximum save power mode

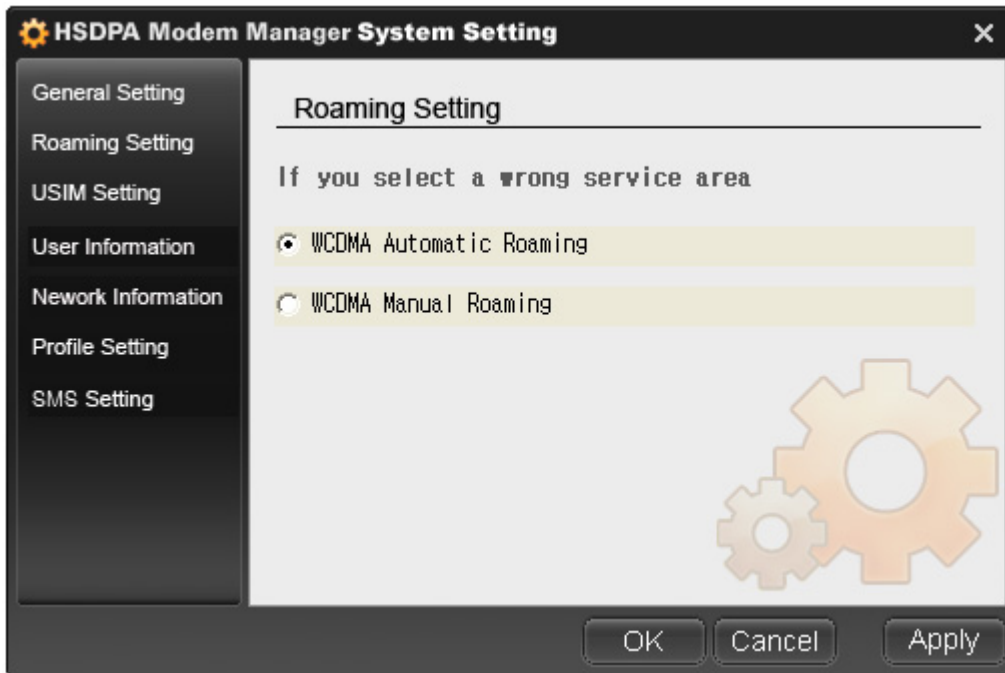
Finish the program for a maximum power save mode..

6. Automatic internet connection by program start

Program start for internet connection automatically

Roaming Setting

If you select wrong service area, It is impossible to have a service to you. Please check the service area change.




International automatic Roaming Setting

WCDMA automatic/Manual Service Selection.

☐ WCDMA Automatic Roaming button supports automatic current connection. Try a connection after a overage search. If the current status is not available to use the Service, Please change WCDMA Manual Roaming Selection / Service providers.

☒ WCDMA Manual Roaming button to select User direct service providers menu.

☒ WCDMA Manual Roaming button click for current available WCDMA Coverage is displayed, and the service provider is displayed in “classification” cell. Please click  button to active and Manual Roaming completed.

Service providerName	Service providerNumber	Classification	
SKTelecom	45005	Current	
KR KTF	45008	Forbidden	

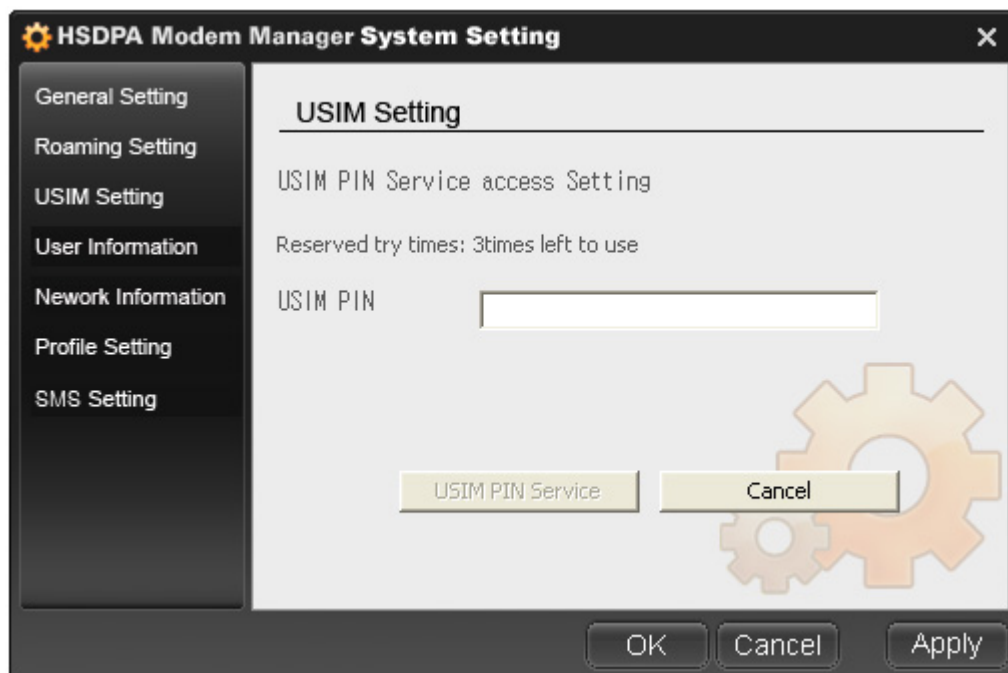
USIM Setting



PIN Use (Lock Setting by USIM CARD PIN number)



button click and, below window.




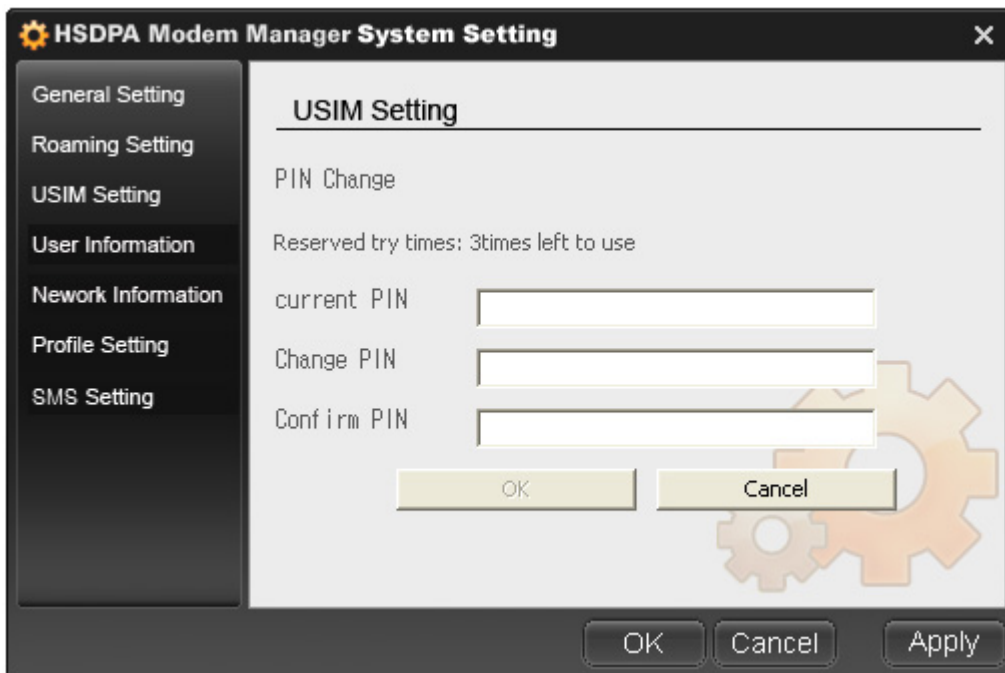
USIM PIN

Here, PIN number Input to input window. Click “USIM PIN Use button” and (Product initial value for 0000 Setting). Lock Setting condition for HSDPA Modem Use, You must input the PIN number to use Modem. Continuous failures for 3 times to PIN, All Services are stop and you must input PUK to reuse. Continuous failures for 10 times PUK, You must dispose the USIM CARD, and you must have a new reissued USIM CARD. (PUK number is USIM CARD is written when it issues first).

PIN Change (USIM CARD PIN number is not allowed to change)

If the setting of the USIM PIN function is “Use” status, It is possible to change PIN number.

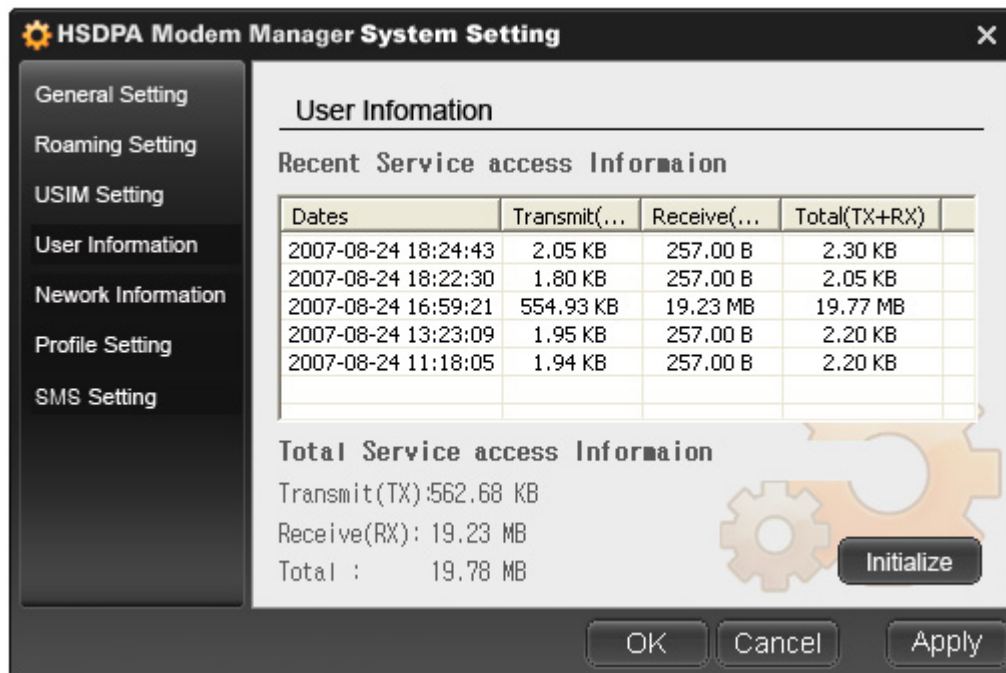
To change the PIN number, The function  button activated, And click to display for the window pop up..



The current PIN number(Initial Product PIN number is 0000)and Change PIN number, Click “Confirm” button after PIN number Input and Setting complete.

Use information

Data Use quantity from the initialization to previous connection.

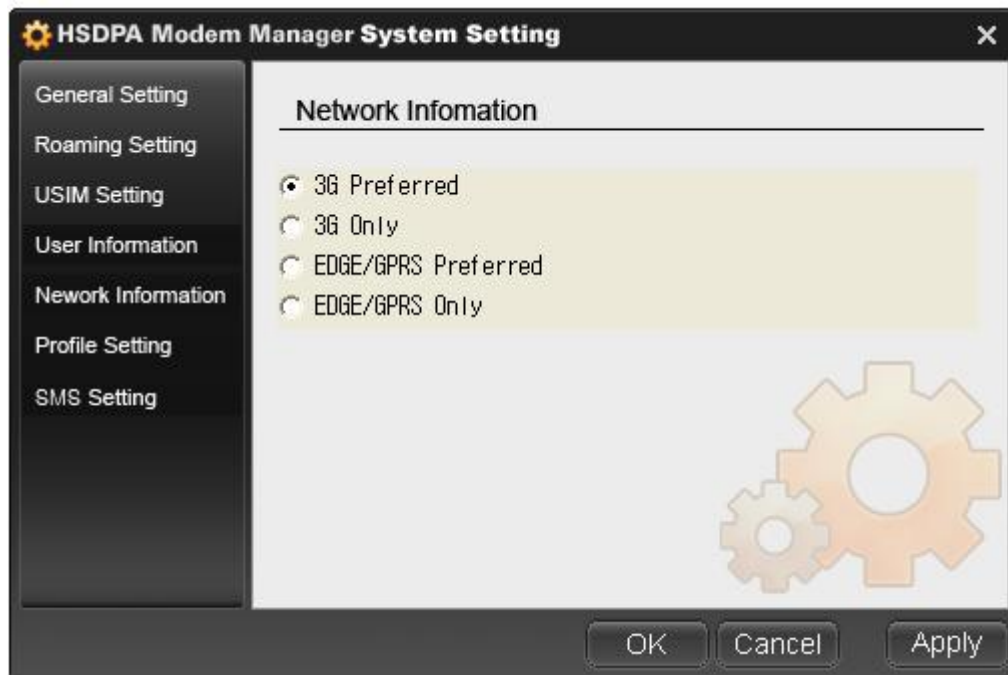


Total Use quantity is sending/Receiving accumulated quantity displayed. For effective management, you may initialize the data 1day before in every month

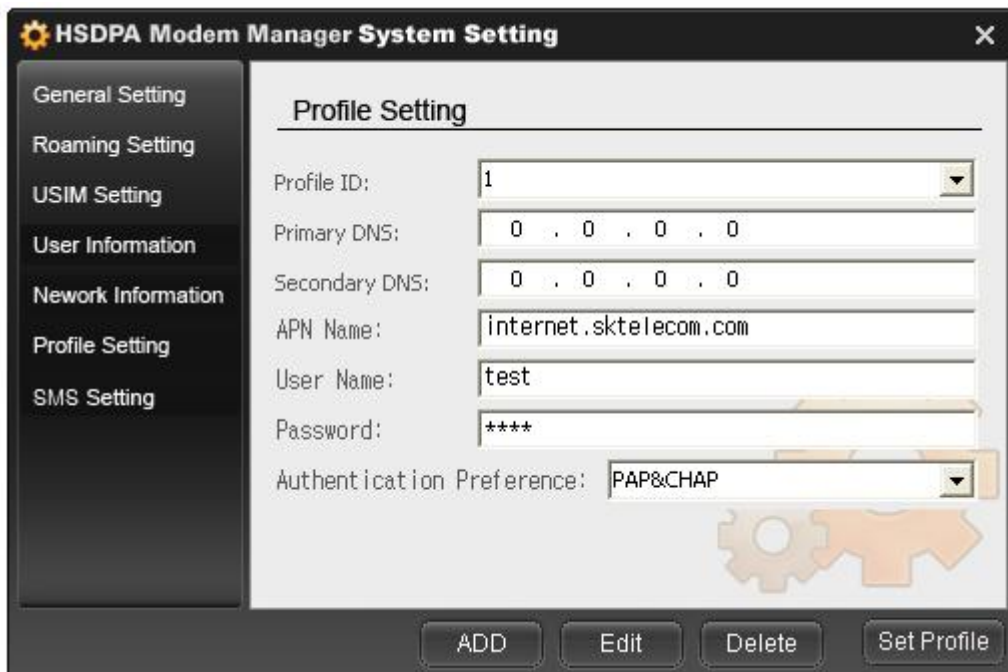
Virus Infected User's PC can make a wrong data display. Please check periodic virus inspection & correction is recommended.

Notice) Displayed Data service access quantity and real Data service access quantity are not the same value. Please note it as a reference.

Network Setting



Profile Setting



The image shows a screenshot of the 'HSDPA Modem Manager System Setting' window. The window has a dark title bar with a gear icon and the text 'HSDPA Modem Manager System Setting'. On the left is a dark sidebar with a list of settings: 'General Setting', 'Roaming Setting', 'USIM Setting', 'User Information', 'Network Information', 'Profile Setting' (which is highlighted), and 'SMS Setting'. The main area is titled 'Profile Setting' and contains several input fields: 'Profile ID' (a dropdown menu showing '1'), 'Primary DNS' (a text field with '0 . 0 . 0 . 0'), 'Secondary DNS' (a text field with '0 . 0 . 0 . 0'), 'APN Name' (a text field with 'internet.sktelecom.com'), 'User Name' (a text field with 'test'), 'Password' (a text field with '****'), and 'Authentication Preference' (a dropdown menu showing 'PAP&CHAP'). At the bottom of the main area is a large orange gear icon. At the bottom of the window are four buttons: 'ADD', 'Edit', 'Delete', and 'Set Profile'.

HSDPA Modem Manager System Setting

Profile Setting

Profile ID: 1

Primary DNS: 0 . 0 . 0 . 0

Secondary DNS: 0 . 0 . 0 . 0

APN Name: internet.sktelecom.com

User Name: test

Password: ****

Authentication Preference: PAP&CHAP

ADD Edit Delete Set Profile

SMS Setting



The screenshot shows a software window titled "HSDPA Modem Manager System Setting" with a close button (X) in the top right corner. On the left is a dark sidebar with a list of settings: General Setting, Roaming Setting, USIM Setting, User Information, Nework Information, Profile Setting, and SMS Setting. The "SMS Setting" option is highlighted. The main area of the window is titled "SMS Setting" and contains a label "SMS Service Centre:" followed by a text input field containing the number "01020959802". To the right of the input field is a "Save" button. In the bottom right corner of the main area, there is a large, faint orange gear icon.

Help Information

Help Information



(Help) User Manual



Version information

Version information



Click (Version information) button for firmware and PC manager Version information & number.



Version information shall be changed.

Memory save Function

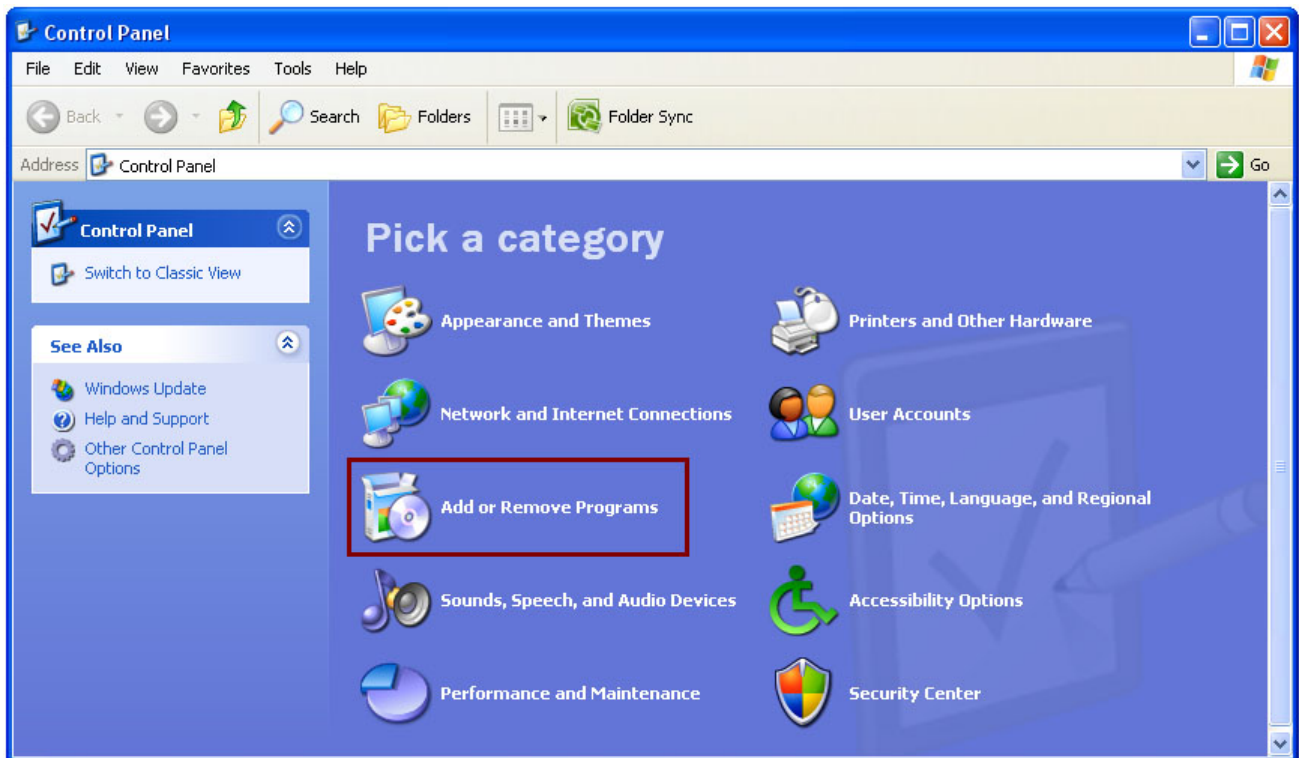
Memory save Function is used by a Modem Memory, maximum save quantity is 45MB.

Memory save Function is not working in the data connection

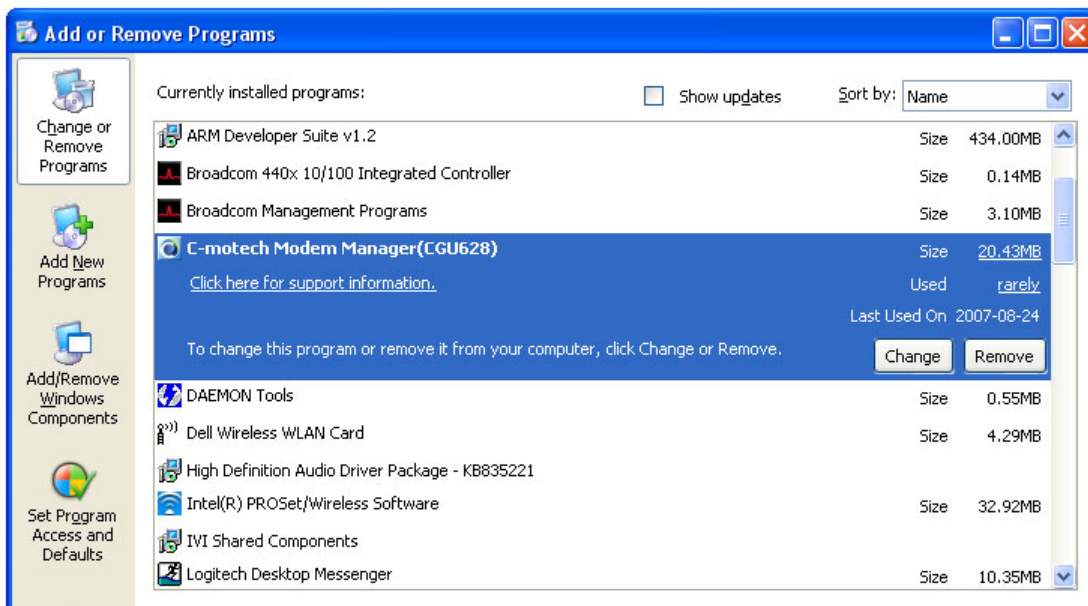
User program remove

Remove

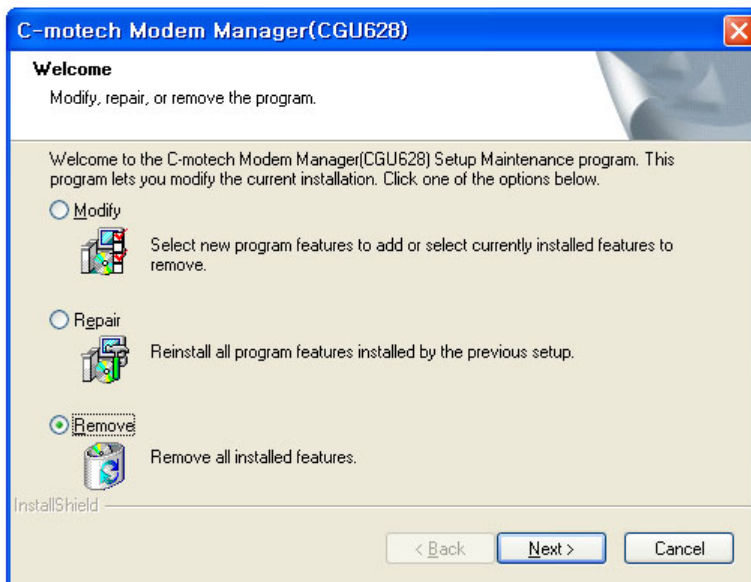
To remove the software, Please click the computer Control Panel and program add/remove.



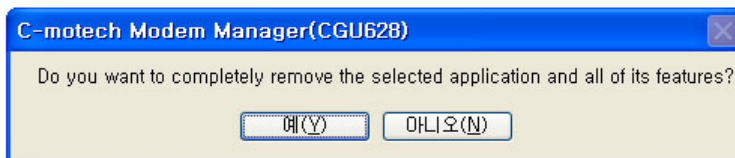
Please find C-motech Modem Manager and Click "remove".



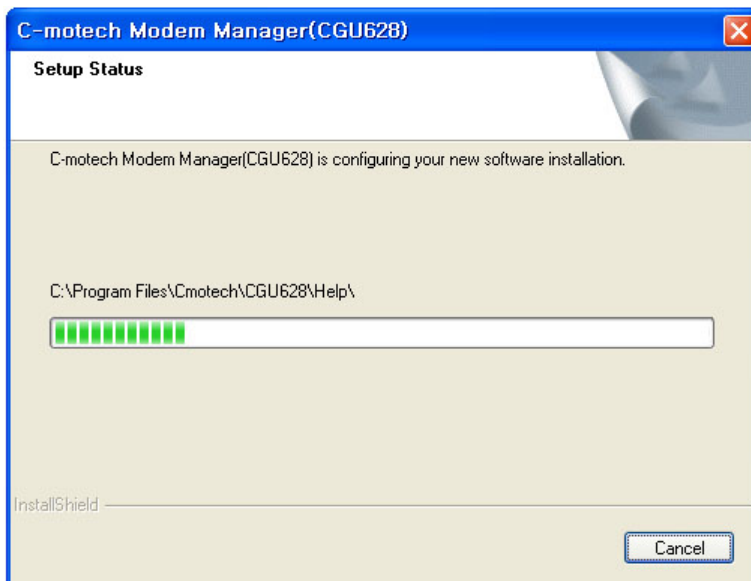
change, recover, remove windows are popup for you. And you may click the remove and "next".



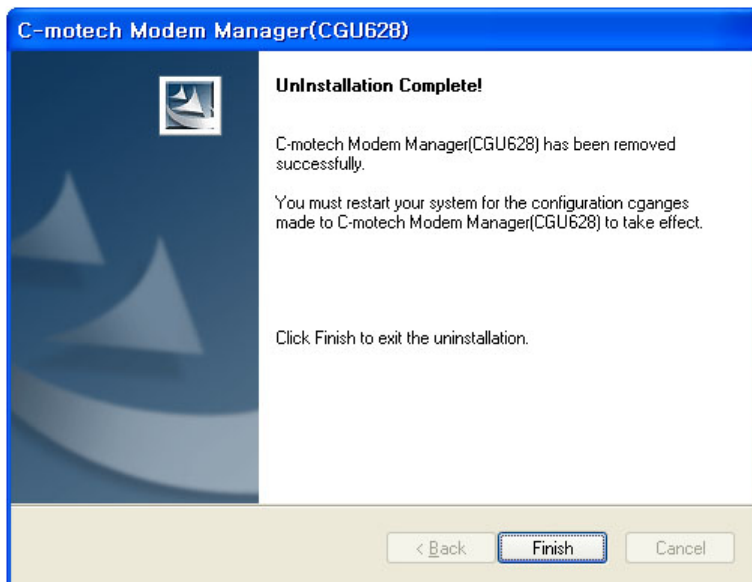
Message box is popup for you and If you can click " Yes(Y)" button to remove operation.
If you don't want to remove, Please push "No(N)" button.



Remove operation is proceeding.



Completed sit, complete window is displayed.



Appendix

Specification and Features

Size	87.8(length) x 31.9(width) x 9(Height)mm
Weight	23g
Output Power	0.2W
Operating Temperature	-20℃ ~ +50℃
Relative Humidity	5% ~95%

FCC Regulations:

●This device complies with part 15 of the FCC Rules. Operation is subject to the following two conditions: (1) This device may not cause harmful interference, and (2) this device must accept any interference received, including interference that may cause undesired operation.

●This device has been tested and found to comply with the limits for a Class B digital device, pursuant to Part 15 of the FCC Rules. These limits are designed to provide reasonable protection against harmful interference in a residential installation. This equipment generates, uses and can radiate radio frequency energy and, if not installed and used in accordance with the instructions, may cause harmful interference to radio communications. However, there is no guarantee that interference will not occur in a particular installation. If this equipment does cause harmful interference to radio or television reception, which can be determined by turning the equipment off and on, the user is encouraged to try to correct the interference by one or more of the following measures:

- Reorient or relocate the receiving antenna.
- Increase the separation between the equipment and receiver.
- Connect the equipment into an outlet on a circuit different from that to which the receiver is connected.
- Consult the dealer or an experienced radio/TV technician for help.

Changes or modifications not expressly approved by the party responsible for compliance could void the user's authority to operate the equipment.

Customer Service Center

◆ Cmotech Customer Center

- Questions for Modem Use Method & Repair
- Contact : 02) 368- 9834 ~ 5
- Address : Yongsan Building 8th floor, 14-14 Yoido-Dong, Yeongdeungpo-Gu, Seoul
- Web Page : www.cmotech.com