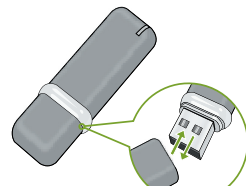


USB Dongle Overview

The below illustrations are intended to help users understand the product and may appear different from the actual product.



Bluetooth USB Dongle
Ancilla BT-AP2 (1)



Installation CD (1)



User's Manual (1)

Preparing to install the Bluetooth software

It is necessary to install the Bluetooth software (in the Installation CD) before using the USB Dongle.



▶ Insert the Installation CD into the CD-ROM drive of your PC.

- ▶ If the Auto-Run function screen of the CD-ROM is enabled, the installation program will start automatically.

If the Auto-Run function screen does not appear

- ① Double click on the **MY COMPUTER** icon on your screen.
- ② Double click on your **CD-ROM** drive icon.
- ③ Double click on the **Setup.exe** file.
- ④ The Bluetooth software begins to be installed.

Specifications

Bluetooth version	Version 2.0 + EDR
Supported Bluetooth Profiles	- DUN, FAX, LAP, SPP, HID, HCRP, FTP, OPP - HSP, PAN, BIP, A2DP, AVRCP, GAVDP will run under Windows 2000/XP
Frequency Range	2.402 ~ 2.480 GHz
Consumption current	0.25 ~ 2.5 mW
Range	up to 10 meters (30ft)
Transmission Speed	max. 3 Mbps
Supported OS	Windows 2000/XP
Operating Temperature	-10°C (14°F) to 50°C (122°F)
Host Interface (USB)	USB specification 2.0 compliant
Dimensions	55mm x 19mm x 11mm

Warranty

Prime Entertainment warrants this product against defects in material and workmanship under normal use for one year from the original date of purchase.

Retain the dated sales receipt as evidence of the date of purchase. You will need it for any warranty service.

In order to keep this warranty in effect, the product must have been handled and used as prescribed in the instructions accompanying this product.

What is not covered under this warranty?

1. Damage or malfunction caused by misuse or mishandling of the product by the user.
2. Damage cause to the product by repair service performed by an unauthorized distributor.
3. Damage or malfunction beyond the warranty period.

For more information on the warranty, contact Prime Entertainment Quality Control Service:

Woolim Lions Bldg C #811, 425 Chungchun-dong, Bupyeong-gu Incheon,
South Korea

Tel: +82-32-623-6471

Fax: +82-32-623-6472

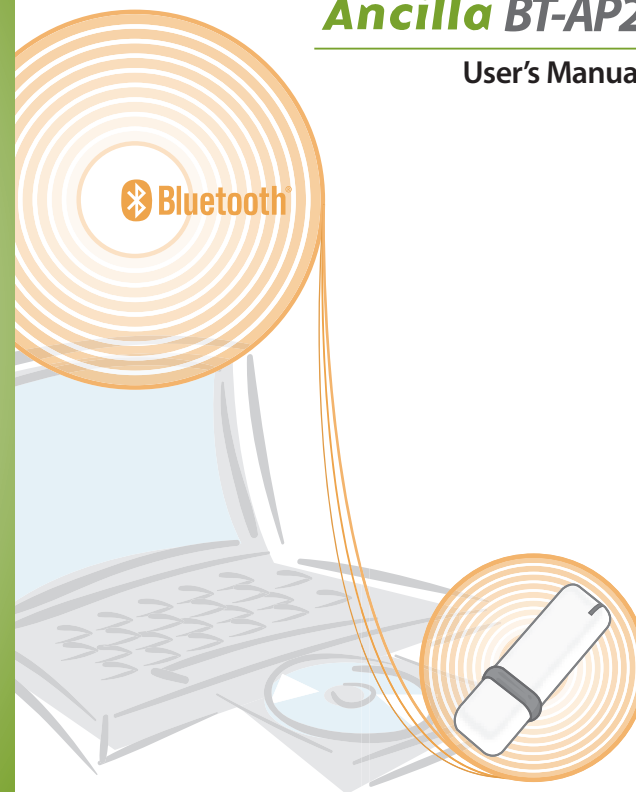
www.primeenter.co.kr



Bluetooth USB Dongle

Ancilla BT-AP2

User's Manual



Ancilla BT-AP2 Features

▶ Welcome to wireless club!

BT-AP2 enables your PC to wirelessly access Bluetooth enabled devices quickly and easily.

▶ State-of-the-art Bluetooth technology!

You can now create your personal wireless network with BT-AP2.

▶ Designed like no other!

The slim black body and metallic silver band give a modern look unique to BT-AP2.

Safety Precautions

Take the following safety precautions when using your USB Dongle.



Do not disassemble, repair or alter the USB Dongle yourself.

- ▶ Consult an authorized person for repairs.



Recap the USB Dongle to protect it from dust when not in use.

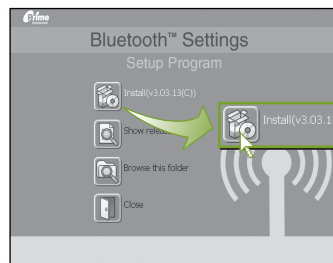
- ▶ If you keep USB Dongle opened, it may result in malfunction.



Using USB Dongle in proximity to RF emitting equipment (i.e., TV, wireless LAN, microwaves) may cause interference with USB Dongle.

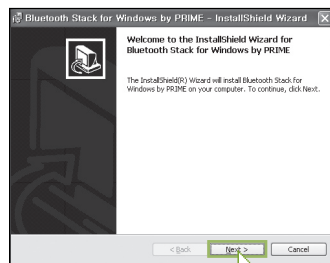
Installing the Bluetooth software

It is necessary to install the Bluetooth software to use the USB Dongle.



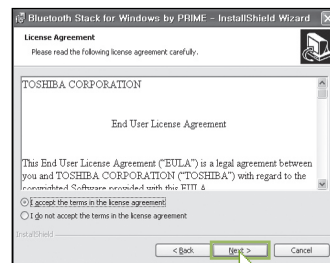
➊ When the Bluetooth Settings window appears, click [Install].

➤ InstallShield Wizard window appears.



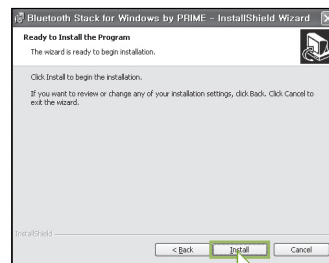
➋ Click [Next].

➤ Installation program will start automatically.

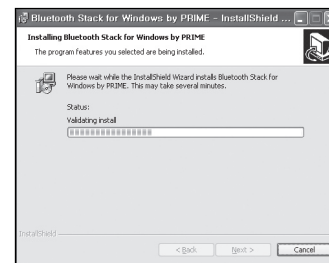


➌ Click [Next] after checking the item I accept the terms on the license agreement on the License Agreement window.

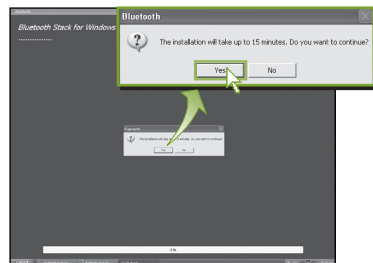
➤ You should accept this agreement after you read it carefully.



➍ Click [Install] to begin the installation.

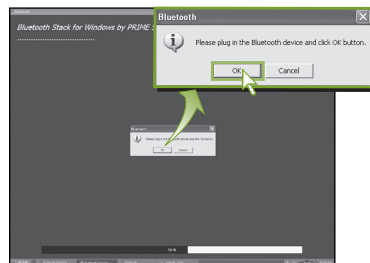


➎ InstallShield Wizard is installing the Bluetooth software.



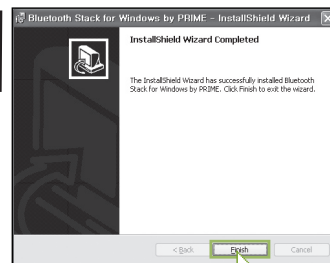
➏ When the Bluetooth Stack Setup window appears, click [Yes].

➤ Installation time may vary depending on the PC's specifications.



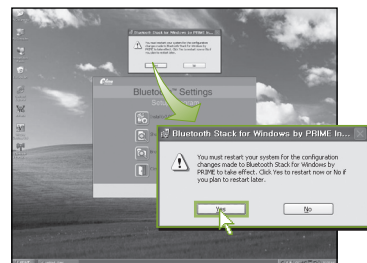
➐ When the "Plug in the Bluetooth device" window pops up, plug the USB Dongle into the USB port of the laptop or computer and then click [OK].

➤ USB controller is automatically installed while the Bluetooth software is being installed.



➑ Click [Finish].

➤ The Bluetooth software has been successfully installed.



➒ Click [Yes] to restart the system and for the configuration changes to take effect.

➤ The system will restart automatically.



Caution

High walls, wall corners or partitions between the USB Dongle and other Bluetooth devices to be used may cause interference and affect the proper functioning of the USB Dongle.

✱ Refer to the 'Help' on the Bluetooth Settings window for further information.

Accessing USB Dongle

Bluetooth function will run automatically when you plug the USB Dongle into the USB port.



➊ When you log in Windows operating system, there will be 2 new Bluetooth icons appearing each on the screen and the system tray normally located in the lower-right corner of the screen.

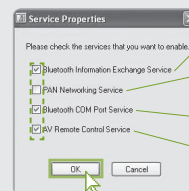
➋ When rebooting Windows operating system, Bluetooth runs automatically and the status LED on the USB Dongle blinks in blue.

Bluetooth Icon	Connection Status	Settings
Blue with White	Enabled	When plugging USB Dongle into the USB port
Blue with Red	Disabled	- When unplugging USB Dongle into the USB port - When disconnecting Bluetooth on the screen
Blue with Green	Connected devices	When using Bluetooth devices through USB Dongle

NOTE

- ✦ If you want to check the status of Bluetooth network
 - Place the cursor over the Bluetooth icon in the system tray located in the lower-right corner of the screen. You can check the status of Bluetooth network.

Using Service Properties



- ➊ **Bluetooth Exchange Information Service**
Sends a file and image from the Bluetooth device to another Bluetooth enabled device
- ➋ **PAN Networking Service**
Supports networking service among computers which are installed by USB Dongle
- ➌ **Bluetooth COM Port Service**
Makes COM port in a hypothetical condition to use Bluetooth
- ➍ **AV Remote Control Service**
Adjusts the media program of computers by using control button of Bluetooth devices

➎ Right-click the Bluetooth icon in the system tray located in the lower-right corner of the screen and then select Service Properties in the list.

➏ Click [OK] after selecting the service you want.
➤ You can select multiple services.

FCC Operation Guide

This device complies with part 15 of the FCC Rules. Operation is subject to the following two conditions:

- (1) This device may not cause harmful interference, and
- (2) This device must accept any interference received, including interference that may cause undesired operation.

FCC Compliance Statement

This equipment has been tested and found to comply with the limits for a Class B digital device, pursuant to part 15 of the FCC Rules. These limits are designed to provide reasonable protection against harmful interference in a residential installation.

This equipment generates, uses and can radiate radio frequency energy and, if not installed and used in accordance with the instructions, may cause harmful interference to radio communications. However, there is no guarantee that interference will not occur in a particular installation. If this equipment does cause harmful interference to radio or television reception, which can be determined by turning the equipment off and on, the user is encouraged to try to correct the interference by one or more of the following measures:

- Reorient or relocate the receiving antenna.
- Increase the separation between the equipment and receiver.
- Connect the equipment into an outlet on a circuit different from that to which the receiver is connected.
- Consult the dealer or an experienced radio/TV technician for help.

Do not



Any changes or modifications to the equipment not expressly approved by the party responsible for compliance could void user's authority to operate the equipment.

RF Exposure Statement

The antenna(s) used for this device must not be colocated or operating in conjunction with any other antenna or transmitter.