

Test report No. : 30GE0232-HO-02-E-R1
Page : 28 of 76
FCC ID : T9FG700SE
Issued date : August 19, 2010
Revised date : October 13, 2010

APPENDIX 2 : SAR Measurement data

UL Japan, Inc.
Head Office EMC Lab.
4383-326 Asama-cho, Ise-shi, Mie-ken 516-0021 JAPAN
Telephone : +81 596 24 8116
Facsimile : +81 596 24 8124

1. Evaluation procedure

The evaluation was performed with the following procedure:

Step 1: Measurement of the E-field at a fixed location above the ear point or central position of flat phantom was used as a reference value for assessing the power drop.

Step 2: The SAR distribution at the exposed side of head or body position was measured at a distance of each device from the inner surface of the shell. The area covered the entire dimension of the antenna of EUT and the horizontal grid spacing was 15 mm x 15 mm . Based on these data, the area of the maximum absorption was determined by spline interpolation.

Step 3: Around this point found in the Step 2 (area scan), a volume of 30mm x 30mm x 30mm was assessed by measuring 7 x 7 x 7 points for IEEE802.11b (2.4G) And for any secondary peaks found in the Step2 which are within 2dB of maximum peak (level more than ambient noise (≥ 0.012 W/kg)) and not with this Step3 (Zoom scan) is repeated. On the basis of this data set, the spatial peak SAR value was evaluated under the following procedure:

(1). The data at the surface were extrapolated, since the center of the dipoles is 1mm away from the tip of the probe and the distance between the surface and the lowest measuring point is 1mm. Therefore minimum distance of probe sensor from surface was set to the 2mm.

The extrapolation was based on a least square algorithm [4]. A polynomial of the fourth order was calculated through the points in z-axes.

This polynomial was then used to evaluate the points between the surface and the probe tip.

(2). The maximum interpolated value was searched with a straightforward algorithm. Around this maximum the SAR values averaged over the spatial volumes (1 g or 10 g) were computed by the 3D-Spline interpolation algorithm. The 3D-Spline is composed of three one-dimensional splines with the "Not a knot"-condition (in x, y and z-directions) [4], [5]. The volume was integrated with the trapezoidal-algorithm. One thousand points (10 x 10 x 10) were interpolated to calculate the average.

(3). All neighboring volumes were evaluated until no neighboring volume with a higher average value was found.

Step 4: Re-measurement of the E-field at the same location as in Step 1.

UL Japan, Inc.

Head Office EMC Lab.

4383-326 Asama-cho, Ise-shi, Mie-ken 516-0021 JAPAN

Telephone : +81 596 24 8116

Facsimile : +81 596 24 8124

2. Measurement data

SG4G2-TB3 / Body / Front / WLAN 11b DBPSK (1Mbps) / 2437MHz

Duty Cycle: 1:1

Medium: M2450 Medium parameters used: $f = 2450$ MHz; $\sigma = 1.98$ mho/m; $\epsilon_r = 50.6$; $\rho = 1000$ kg/m³

Phantom section: Flat Section

DASY4 Configuration:

- Probe: EX3DV4 - SN3540; ConvF(8.05, 8.05, 8.05); Calibrated: 2010/07/13

- Sensor-Surface: 2mm (Mechanical Surface Detection)

- Phantom: Flat Phantom ELI4.0

- Measurement SW: DASY4, V4.7 Build 80; Postprocessing SW: SEMCAD, V1.8 Build 186

Area Scan (81x131x1): Measurement grid: $dx=15$ mm, $dy=15$ mm

Maximum value of SAR (interpolated) = 0.230 mW/g

Zoom Scan (7x7x7)/Cube 0: Measurement grid: $dx=5$ mm, $dy=5$ mm, $dz=5$ mm

Reference Value = 1.84 V/m; Power Drift = -0.149 dB

Peak SAR (extrapolated) = 0.268 W/kg

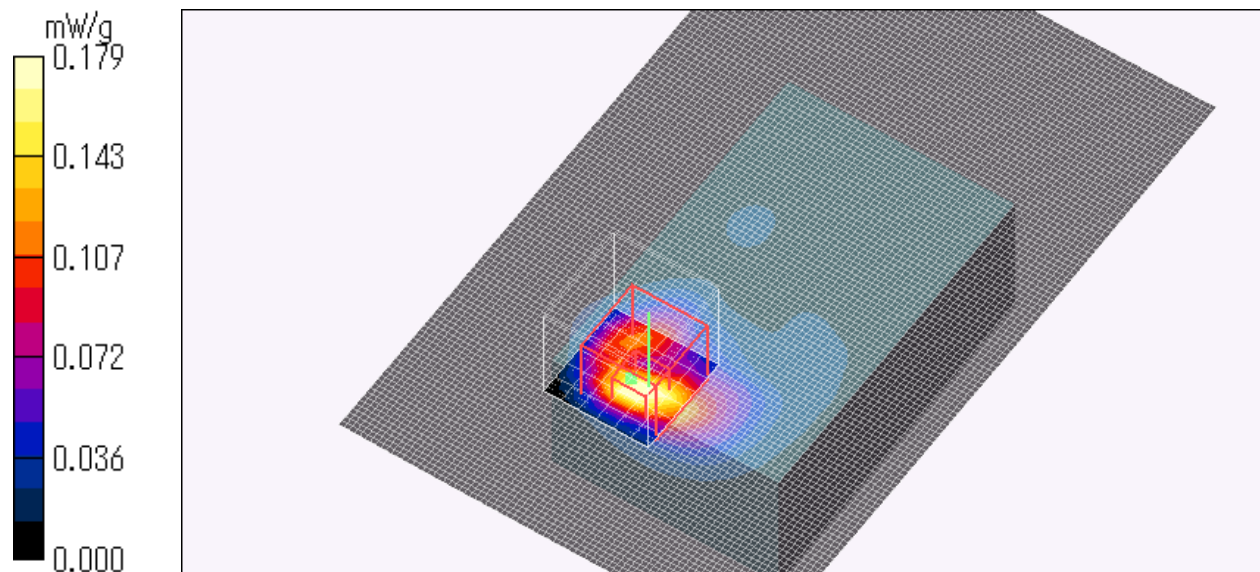
SAR(1 g) = 0.115 mW/g; SAR(10 g) = 0.048 mW/g

Maximum value of SAR (measured) = 0.179 mW/g

Test Date = 08/02/10

Ambient Temperature = 24.0 degree.C.

Liquid Temperature = Before 24.3 degree.C. , After 24.3degree.C.



UL Japan, Inc.

Head Office EMC Lab.

4383-326 Asama-cho, Ise-shi, Mie-ken 516-0021 JAPAN

Telephone : +81 596 24 8116

Facsimile : +81 596 24 8124

SG4G2-TB3 / Body / Rear / WLAN 11b DBPSK (1Mbps) / 2437MHz

Duty Cycle: 1:1

Medium: M2450 Medium parameters used: $f = 2450$ MHz; $\sigma = 1.98$ mho/m; $\epsilon_r = 50.6$; $\rho = 1000$ kg/m³

Phantom section: Flat Section

DASY4 Configuration:

- Probe: EX3DV4 - SN3540; ConvF(8.05, 8.05, 8.05); Calibrated: 2010/07/13

- Sensor-Surface: 2mm (Mechanical Surface Detection)

- Phantom: Flat Phantom ELI4.0

- Measurement SW: DASY4, V4.7 Build 80; Postprocessing SW: SEMCAD, V1.8 Build 186

Area Scan (81x131x1): Measurement grid: $dx=15$ mm, $dy=15$ mm

Maximum value of SAR (interpolated) = 0.004 mW/g

Zoom Scan (7x7x7)/Cube 0: Measurement grid: $dx=5$ mm, $dy=5$ mm, $dz=5$ mm

Reference Value = 0.640 V/m; Power Drift = 0.127 dB

Peak SAR (extrapolated) = 0.005 W/kg

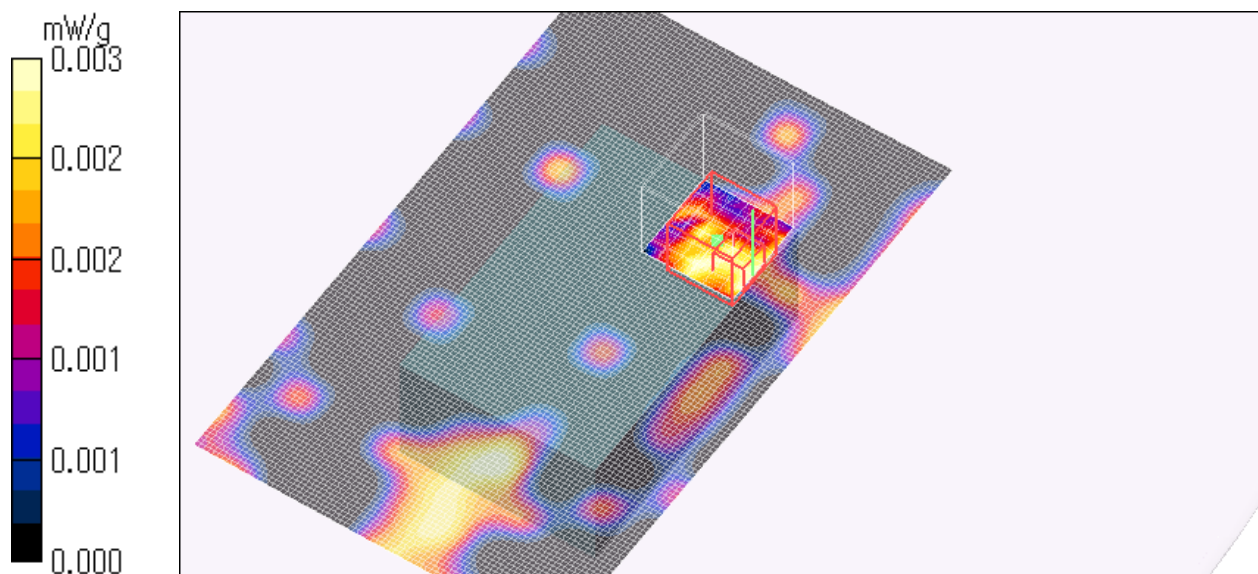
SAR(1 g) = 0.00231 mW/g; SAR(10 g) = 0.00129 mW/g

Maximum value of SAR (measured) = 0.003 mW/g

Test Date = 08/02/10

Ambient Temperature = 24.0 degree.C.

Liquid Temperature = Before 24.3 degree.C. , After 24.3degree.C.



UL Japan, Inc.

Head Office EMC Lab.

4383-326 Asama-cho, Ise-shi, Mie-ken 516-0021 JAPAN

Telephone : +81 596 24 8116

Facsimile : +81 596 24 8124

SG4G2-TB3 / Body / Top / WLAN 11b DBPSK (1Mbps) / 2437MHz

Duty Cycle: 1:1

Medium: M2450 Medium parameters used: $f = 2450$ MHz; $\sigma = 1.98$ mho/m; $\epsilon_r = 50.6$; $\rho = 1000$ kg/m³

Phantom section: Flat Section

DASY4 Configuration:

- Probe: EX3DV4 - SN3540; ConvF(8.05, 8.05, 8.05); Calibrated: 2010/07/13

- Sensor-Surface: 2mm (Mechanical Surface Detection)

- Phantom: Flat Phantom ELI4.0

- Measurement SW: DASY4, V4.7 Build 80; Postprocessing SW: SEMCAD, V1.8 Build 186

Area Scan (81x131x1): Measurement grid: $dx=15$ mm, $dy=15$ mm

Maximum value of SAR (interpolated) = 0.008 mW/g

Zoom Scan (7x7x7)/Cube 0: Measurement grid: $dx=5$ mm, $dy=5$ mm, $dz=5$ mm

Reference Value = 1.09 V/m; Power Drift = 0.201 dB

Peak SAR (extrapolated) = 0.009 W/kg

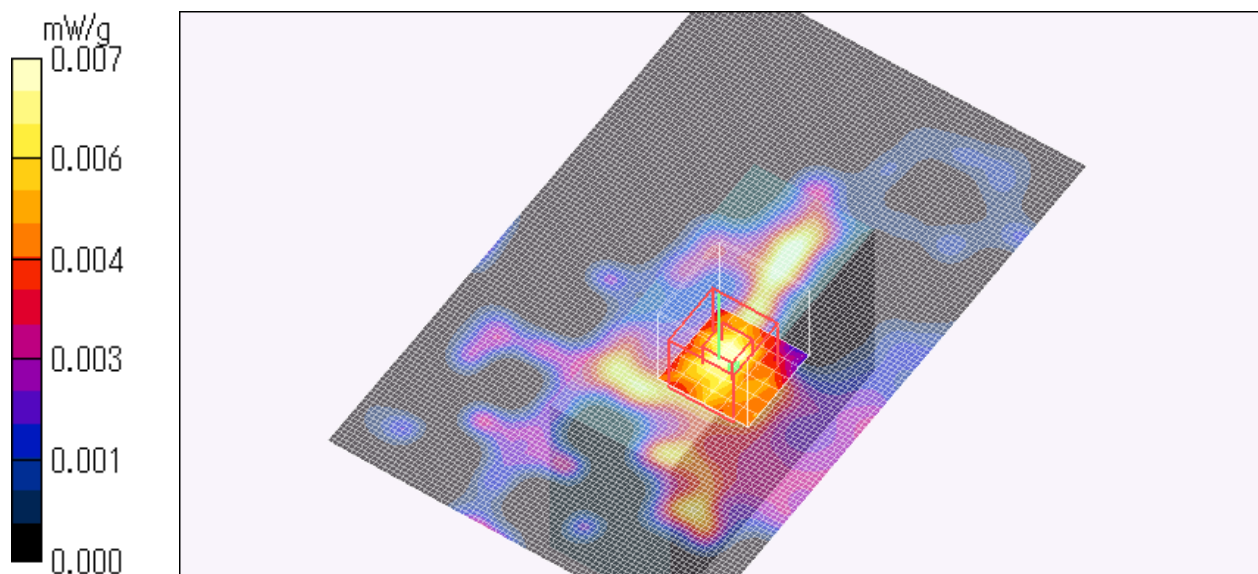
SAR(1 g) = 0.00533 mW/g; SAR(10 g) = 0.003 mW/g

Maximum value of SAR (measured) = 0.007 mW/g

Test Date = 08/02/10

Ambient Temperature = 24.0 degree.C.

Liquid Temperature = Before 24.3 degree.C. , After 24.3degree.C.



UL Japan, Inc.

Head Office EMC Lab.

4383-326 Asama-cho, Ise-shi, Mie-ken 516-0021 JAPAN

Telephone : +81 596 24 8116

Facsimile : +81 596 24 8124

SG4G2-TB3 / Body / Bottom / WLAN 11b DBPSK (1Mbps) / 2437MHz

Duty Cycle: 1:1

Medium: M2450 Medium parameters used: $f = 2450$ MHz; $\sigma = 1.98$ mho/m; $\epsilon_r = 50.6$; $\rho = 1000$ kg/m³

Phantom section: Flat Section

DASY4 Configuration:

- Probe: EX3DV4 - SN3540; ConvF(8.05, 8.05, 8.05); Calibrated: 2010/07/13

- Sensor-Surface: 2mm (Mechanical Surface Detection)

- Phantom: Flat Phantom ELI4.0

- Measurement SW: DASY4, V4.7 Build 80; Postprocessing SW: SEMCAD, V1.8 Build 186

Area Scan (81x121x1): Measurement grid: dx=15mm, dy=15mm

Maximum value of SAR (interpolated) = 0.005 mW/g

Zoom Scan (7x7x7)/Cube 0: Measurement grid: dx=5mm, dy=5mm, dz=5mm

Reference Value = 0.200 V/m; Power Drift = 0.123 dB

Peak SAR (extrapolated) = 0.012 W/kg

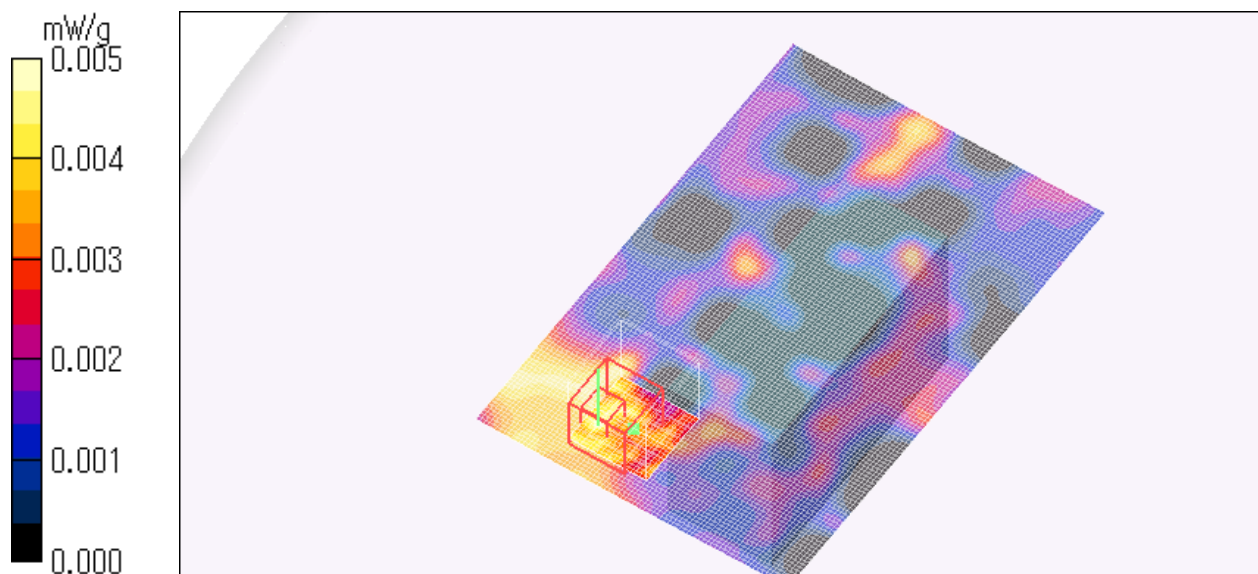
SAR(1 g) = 0.00355 mW/g; SAR(10 g) = 0.00244 mW/g

Maximum value of SAR (measured) = 0.005 mW/g

Test Date = 08/02/10

Ambient Temperature = 24.0 degree.C.

Liquid Temperature = Before 24.3 degree.C. , After 24.3degree.C.



UL Japan, Inc.

Head Office EMC Lab.

4383-326 Asama-cho, Ise-shi, Mie-ken 516-0021 JAPAN

Telephone : +81 596 24 8116

Facsimile : +81 596 24 8124

SG4G2-TB3 / Body / Side / WLAN 11b DBPSK (1Mbps) / 2437MHz

Duty Cycle: 1:1

Medium: M2450 Medium parameters used: $f = 2450$ MHz; $\sigma = 1.98$ mho/m; $\epsilon_r = 50.6$; $\rho = 1000$ kg/m³

Phantom section: Flat Section

DASY4 Configuration:

- Probe: EX3DV4 - SN3540; ConvF(8.05, 8.05, 8.05); Calibrated: 2010/07/13

- Sensor-Surface: 2mm (Mechanical Surface Detection)

- Phantom: Flat Phantom ELI4.0

- Measurement SW: DASY4, V4.7 Build 80; Postprocessing SW: SEMCAD, V1.8 Build 186

Area Scan (81x81x1): Measurement grid: $dx=15$ mm, $dy=15$ mm

Maximum value of SAR (interpolated) = 0.096 mW/g

Zoom Scan (7x7x7)/Cube 0: Measurement grid: $dx=5$ mm, $dy=5$ mm, $dz=5$ mm

Reference Value = 5.54 V/m; Power Drift = 0.126 dB

Peak SAR (extrapolated) = 0.101 W/kg

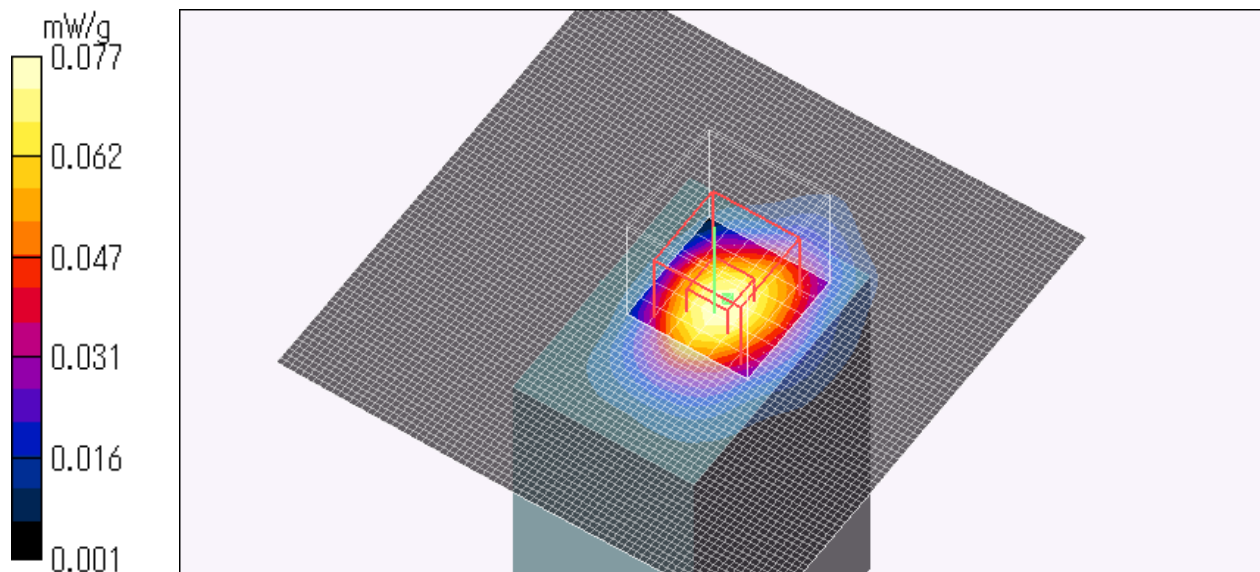
SAR(1 g) = 0.056 mW/g; SAR(10 g) = 0.029 mW/g

Maximum value of SAR (measured) = 0.077 mW/g

Test Date = 08/02/10

Ambient Temperature = 24.0 degree.C.

Liquid Temperature = Before 24.2 degree.C. , After 24.0degree.C.



UL Japan, Inc.

Head Office EMC Lab.

4383-326 Asama-cho, Ise-shi, Mie-ken 516-0021 JAPAN

Telephone : +81 596 24 8116

Facsimile : +81 596 24 8124

SG4G2-TB3 / Body / Front / WLAN 11b DBPSK (1Mbps) / 2412MHz

Duty Cycle: 1:1

Medium: M2450 Medium parameters used: $f = 2450$ MHz; $\sigma = 1.98$ mho/m; $\epsilon_r = 50.6$; $\rho = 1000$ kg/m³

Phantom section: Flat Section

DASY4 Configuration:

- Probe: EX3DV4 - SN3540; ConvF(8.05, 8.05, 8.05); Calibrated: 2010/07/13

- Sensor-Surface: 2mm (Mechanical Surface Detection)

- Phantom: Flat Phantom ELI4.0

- Measurement SW: DASY4, V4.7 Build 80; Postprocessing SW: SEMCAD, V1.8 Build 186

Area Scan (81x131x1): Measurement grid: $dx=15$ mm, $dy=15$ mm

Maximum value of SAR (interpolated) = 0.194 mW/g

Zoom Scan (7x7x7)/Cube 0: Measurement grid: $dx=5$ mm, $dy=5$ mm, $dz=5$ mm

Reference Value = 2.44 V/m; Power Drift = 0.191 dB

Peak SAR (extrapolated) = 0.279 W/kg

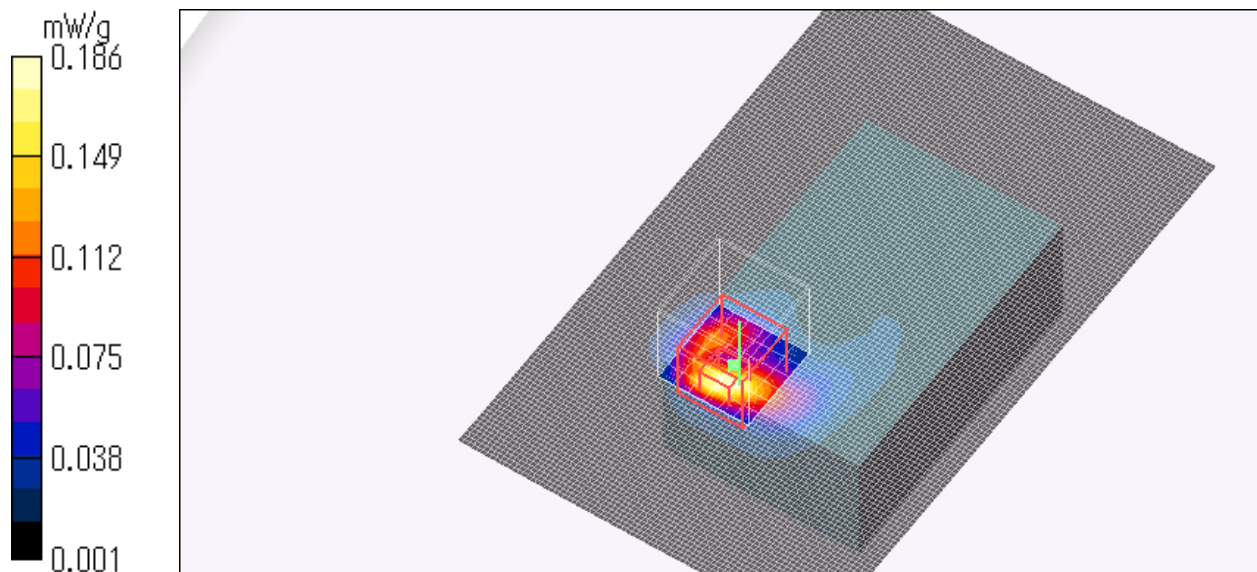
SAR(1 g) = 0.117 mW/g; SAR(10 g) = 0.049 mW/g

Maximum value of SAR (measured) = 0.186 mW/g

Test Date = 08/02/10

Ambient Temperature = 24.0 degree.C.

Liquid Temperature = Before 24.0 degree.C. , After 24.0degree.C.



UL Japan, Inc.

Head Office EMC Lab.

4383-326 Asama-cho, Ise-shi, Mie-ken 516-0021 JAPAN

Telephone : +81 596 24 8116

Facsimile : +81 596 24 8124

SG4G2-TB3 / Body / Front / WLAN 11b DBPSK (1Mbps) / 2462MHz

Duty Cycle: 1:1

Medium: M2450 Medium parameters used: $f = 2450$ MHz; $\sigma = 1.98$ mho/m; $\epsilon_r = 50.6$; $\rho = 1000$ kg/m³

Phantom section: Flat Section

DASY4 Configuration:

- Probe: EX3DV4 - SN3540; ConvF(8.05, 8.05, 8.05); Calibrated: 2010/07/13

- Sensor-Surface: 2mm (Mechanical Surface Detection)

- Phantom: Flat Phantom ELI4.0

- Measurement SW: DASY4, V4.7 Build 80; Postprocessing SW: SEMCAD, V1.8 Build 186

Area Scan (81x121x1): Measurement grid: dx=15mm, dy=15mm

Maximum value of SAR (interpolated) = 0.125 mW/g

Zoom Scan (7x7x7)/Cube 0: Measurement grid: dx=5mm, dy=5mm, dz=5mm

Reference Value = 1.53 V/m; Power Drift = -0.146 dB

Peak SAR (extrapolated) = 0.306 W/kg

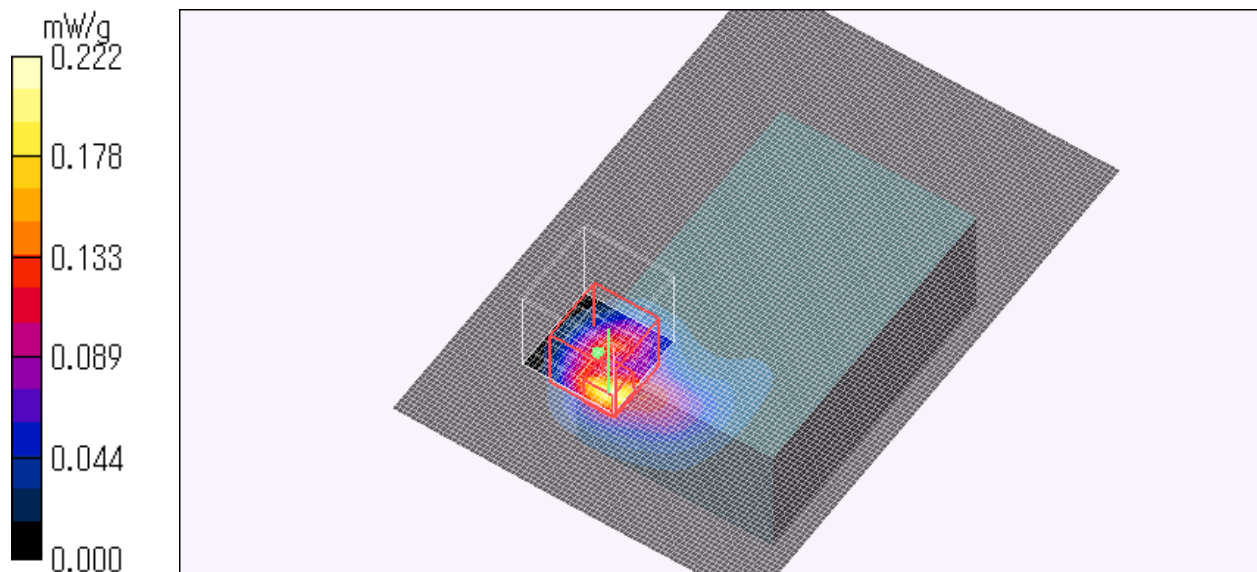
SAR(1 g) = 0.125 mW/g; SAR(10 g) = 0.047 mW/g

Maximum value of SAR (measured) = 0.222 mW/g

Test Date = 08/02/10

Ambient Temperature = 24.0 degree.C.

Liquid Temperature = Before 24.0 degree.C. , After 24.0degree.C.



UL Japan, Inc.

Head Office EMC Lab.

4383-326 Asama-cho, Ise-shi, Mie-ken 516-0021 JAPAN

Telephone : +81 596 24 8116

Facsimile : +81 596 24 8124

Z-axis scan at max SAR location

SG4G2-TB3 / Body / Front / WLAN 11b DBPSK (1Mbps) / 2462MHz

Duty Cycle: 1:1

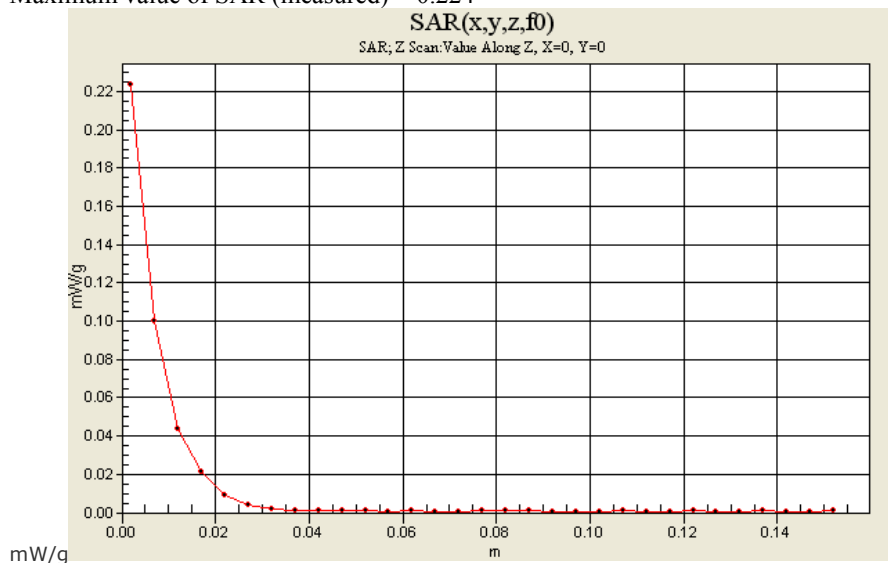
Medium: M2450 Medium parameters used: $f = 2450$ MHz; $\sigma = 1.98$ mho/m; $\epsilon_r = 50.6$; $\rho = 1000$ kg/m³

Phantom section: Flat Section

DASY4 Configuration:

- Probe: EX3DV4 - SN3540; ConvF(8.05, 8.05, 8.05); Calibrated: 2010/07/13
- Sensor-Surface: 2mm (Mechanical Surface Detection)
- Phantom: Flat Phantom ELI4.0
- Measurement SW: DASY4, V4.7 Build 80; Postprocessing SW: SEMCAD, V1.8 Build 186

Maximum value of SAR (measured) = 0.224



UL Japan, Inc.

Head Office EMC Lab.

4383-326 Asama-cho, Ise-shi, Mie-ken 516-0021 JAPAN

Telephone : +81 596 24 8116

Facsimile : +81 596 24 8124

SG4G2-TB3 / Body / Front / WLAN 11g BPSK (6Mbps) / 2412MHz

Duty Cycle: 1:1

Medium: M2450 Medium parameters used: $f = 2450$ MHz; $\sigma = 1.98$ mho/m; $\epsilon_r = 50.6$; $\rho = 1000$ kg/m³

Phantom section: Flat Section

DASY4 Configuration:

- Probe: EX3DV4 - SN3540; ConvF(8.05, 8.05, 8.05); Calibrated: 2010/07/13

- Sensor-Surface: 2mm (Mechanical Surface Detection)

- Phantom: Flat Phantom ELI4.0

- Measurement SW: DASY4, V4.7 Build 80; Postprocessing SW: SEMCAD, V1.8 Build 186

Area Scan (81x131x1): Measurement grid: $dx=15$ mm, $dy=15$ mm

Maximum value of SAR (interpolated) = 0.168 mW/g

Zoom Scan (7x7x7)/Cube 0: Measurement grid: $dx=5$ mm, $dy=5$ mm, $dz=5$ mm

Reference Value = 1.57 V/m; Power Drift = -0.151 dB

Peak SAR (extrapolated) = 0.189 W/kg

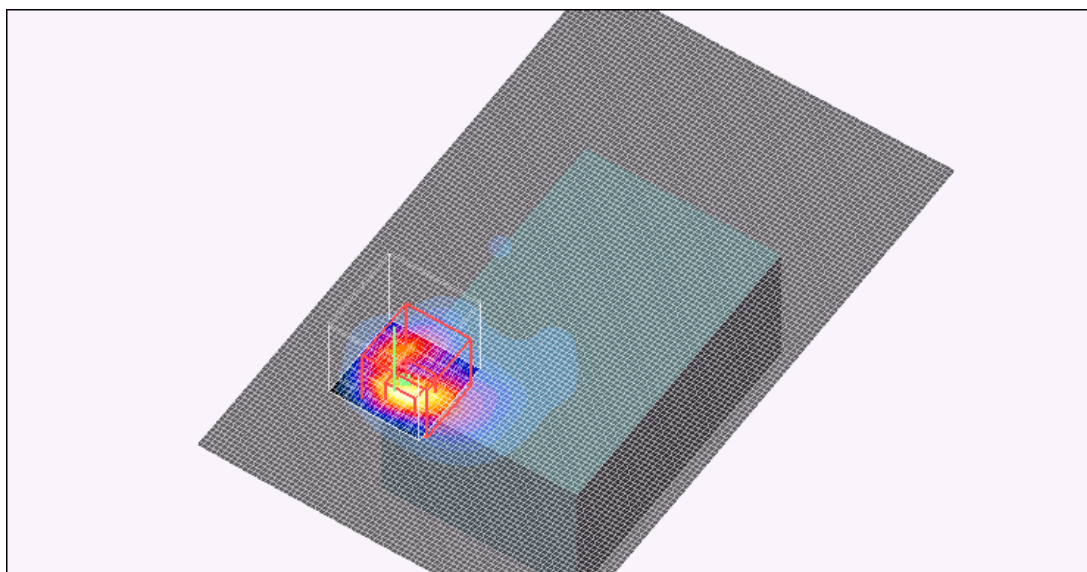
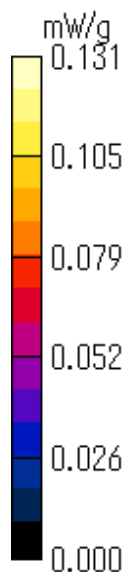
SAR(1 g) = 0.080 mW/g; SAR(10 g) = 0.034 mW/g

Maximum value of SAR (measured) = 0.131 mW/g

Test Date = 08/02/10

Ambient Temperature = 24.0 degree.C.

Liquid Temperature = Before 24.0 degree.C. , After 24.0degree.C.



UL Japan, Inc.

Head Office EMC Lab.

4383-326 Asama-cho, Ise-shi, Mie-ken 516-0021 JAPAN

Telephone : +81 596 24 8116

Facsimile : +81 596 24 8124

SG4G2-TB3 / Body / Front / WLAN 11g BPSK (6Mbps) / 2437MHz

Duty Cycle: 1:1

Medium: M2450 Medium parameters used: $f = 2450$ MHz; $\sigma = 1.98$ mho/m; $\epsilon_r = 50.6$; $\rho = 1000$ kg/m³

Phantom section: Flat Section

DASY4 Configuration:

- Probe: EX3DV4 - SN3540; ConvF(8.05, 8.05, 8.05); Calibrated: 2010/07/13

- Sensor-Surface: 2mm (Mechanical Surface Detection)

- Phantom: Flat Phantom ELI4.0

- Measurement SW: DASY4, V4.7 Build 80; Postprocessing SW: SEMCAD, V1.8 Build 186

Area Scan (81x131x1): Measurement grid: dx=15mm, dy=15mm

Maximum value of SAR (interpolated) = 0.141 mW/g

Zoom Scan (7x7x7)/Cube 0: Measurement grid: dx=5mm, dy=5mm, dz=5mm

Reference Value = 1.70 V/m; Power Drift = -0.182 dB

Peak SAR (extrapolated) = 0.179 W/kg

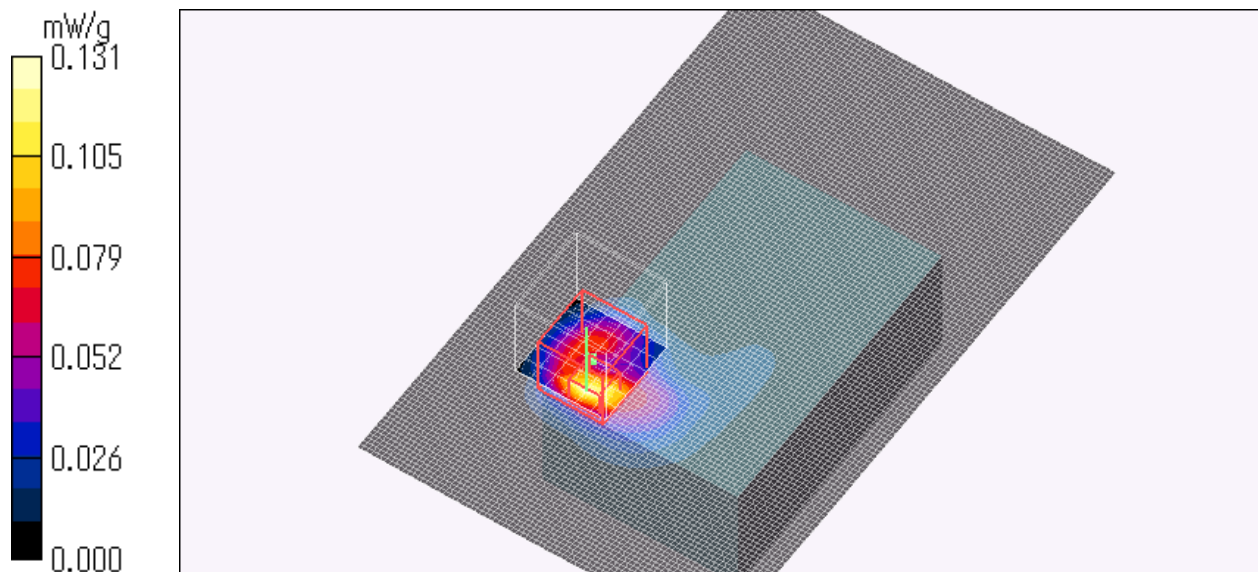
SAR(1 g) = 0.077 mW/g; SAR(10 g) = 0.032 mW/g

Maximum value of SAR (measured) = 0.131 mW/g

Test Date = 08/02/10

Ambient Temperature = 24.0 degree.C.

Liquid Temperature = Before 24.0 degree.C. , After 24.0degree.C.



UL Japan, Inc.

Head Office EMC Lab.

4383-326 Asama-cho, Ise-shi, Mie-ken 516-0021 JAPAN

Telephone : +81 596 24 8116

Facsimile : +81 596 24 8124

SG4G2-TB3 / Body / Front / WLAN 11g BPSK (6Mbps) / 2462MHz

Duty Cycle: 1:1

Medium: M2450 Medium parameters used: $f = 2450$ MHz; $\sigma = 1.98$ mho/m; $\epsilon_r = 50.6$; $\rho = 1000$ kg/m³

Phantom section: Flat Section

DASY4 Configuration:

- Probe: EX3DV4 - SN3540; ConvF(8.05, 8.05, 8.05); Calibrated: 2010/07/13

- Sensor-Surface: 2mm (Mechanical Surface Detection)

- Phantom: Flat Phantom ELI4.0

- Measurement SW: DASY4, V4.7 Build 80; Postprocessing SW: SEMCAD, V1.8 Build 186

Area Scan (81x131x1): Measurement grid: dx=15mm, dy=15mm

Maximum value of SAR (interpolated) = 0.136 mW/g

Zoom Scan (7x7x7)/Cube 0: Measurement grid: dx=5mm, dy=5mm, dz=5mm

Reference Value = 1.78 V/m; Power Drift = 0.200 dB

Peak SAR (extrapolated) = 0.178 W/kg

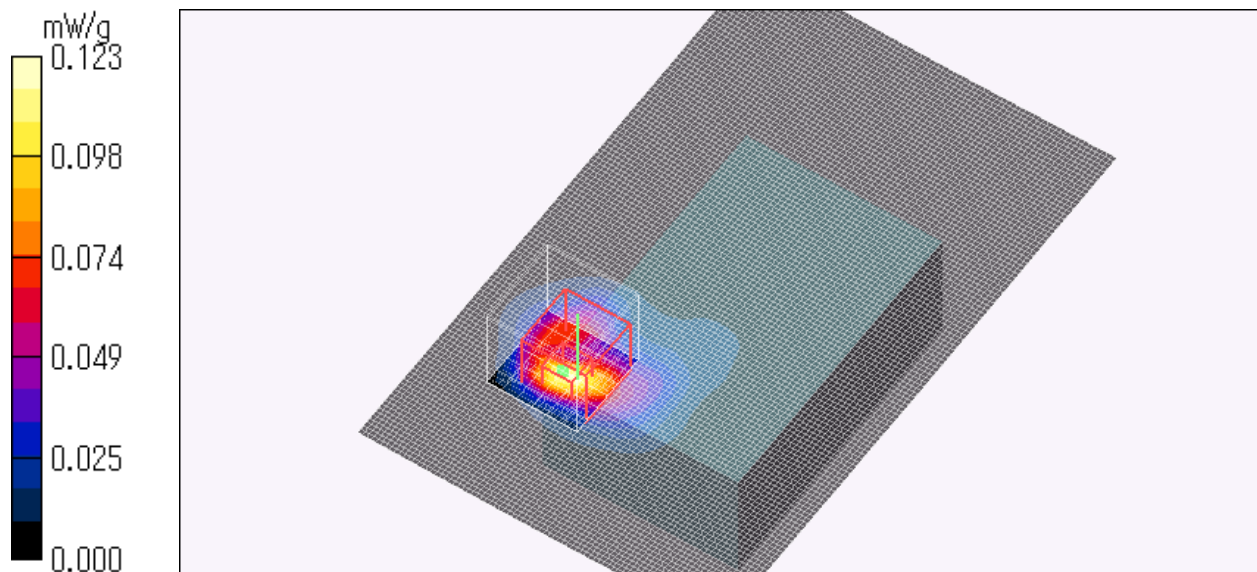
SAR(1 g) = 0.075 mW/g; SAR(10 g) = 0.032 mW/g

Maximum value of SAR (measured) = 0.123 mW/g

Test Date = 08/02/10

Ambient Temperature = 24.0 degree.C.

Liquid Temperature = Before 24.0 degree.C. , After 24.0degree.C.



UL Japan, Inc.

Head Office EMC Lab.

4383-326 Asama-cho, Ise-shi, Mie-ken 516-0021 JAPAN

Telephone : +81 596 24 8116

Facsimile : +81 596 24 8124

SG4G2-TB3 / Body / Front 5mm / WLAN 11b DBPSK (1Mbps) / 2462MHz

Duty Cycle: 1:1

Medium: M2450 Medium parameters used: $f = 2450$ MHz; $\sigma = 1.98$ mho/m; $\epsilon_r = 50.6$; $\rho = 1000$ kg/m³

Phantom section: Flat Section

DASY4 Configuration:

- Probe: EX3DV4 - SN3540; ConvF(8.05, 8.05, 8.05); Calibrated: 2010/07/13

- Sensor-Surface: 2mm (Mechanical Surface Detection)

- Phantom: Flat Phantom ELI4.0

- Measurement SW: DASY4, V4.7 Build 80; Postprocessing SW: SEMCAD, V1.8 Build 186

Area Scan (81x131x1): Measurement grid: $dx=15$ mm, $dy=15$ mm

Maximum value of SAR (interpolated) = 0.062 mW/g

Zoom Scan (7x7x7)/Cube 0: Measurement grid: $dx=5$ mm, $dy=5$ mm, $dz=5$ mm

Reference Value = 1.44 V/m; Power Drift = 0.114 dB

Peak SAR (extrapolated) = 0.103 W/kg

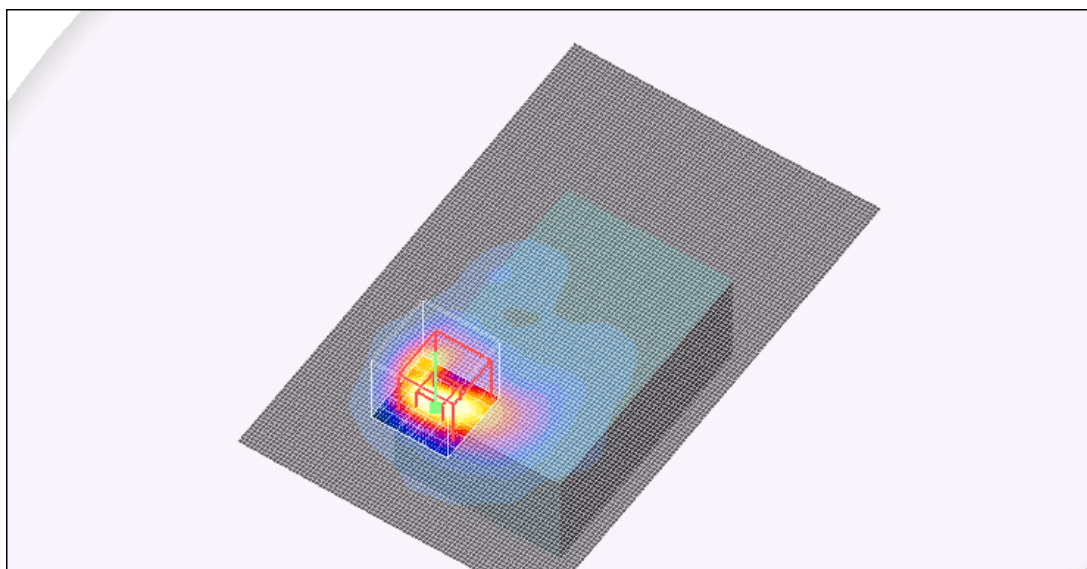
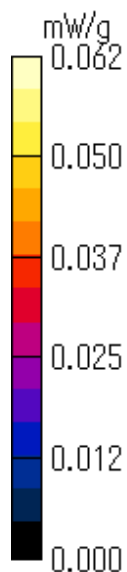
SAR(1 g) = 0.049 mW/g; SAR(10 g) = 0.022 mW/g

Maximum value of SAR (measured) = 0.073 mW/g

Test Date = 08/02/10

Ambient Temperature = 24.0 degree.C.

Liquid Temperature = Before 24.0 degree.C. , After 24.0degree.C.



UL Japan, Inc.

Head Office EMC Lab.

4383-326 Asama-cho, Ise-shi, Mie-ken 516-0021 JAPAN

Telephone : +81 596 24 8116

Facsimile : +81 596 24 8124

<Check testing of GPS unit>

SG4G2-TB3 / Body / Front with GPS unit / WLAN 11b DBPSK (1Mbps) / 2462MHz

Duty Cycle: 1:1

Medium: M2450 Medium parameters used: $f = 2450$ MHz; $\sigma = 1.98$ mho/m; $\epsilon_r = 50.6$; $\rho = 1000$ kg/m³

Phantom section: Flat Section

DASY4 Configuration:

- Probe: EX3DV4 - SN3540; ConvF(8.05, 8.05, 8.05); Calibrated: 2010/07/13
- Sensor-Surface: 2mm (Mechanical Surface Detection)
- Phantom: Flat Phantom ELI4.0
- Measurement SW: DASY4, V4.7 Build 80; Postprocessing SW: SEMCAD, V1.8 Build 186

Area Scan (81x121x1): Measurement grid: dx=15mm, dy=15mm

Maximum value of SAR (interpolated) = 0.198 mW/g

Zoom Scan (7x7x7)/Cube 0: Measurement grid: dx=5mm, dy=5mm, dz=5mm

Reference Value = 1.95 V/m; Power Drift = -0.120 dB

Peak SAR (extrapolated) = 0.267 W/kg

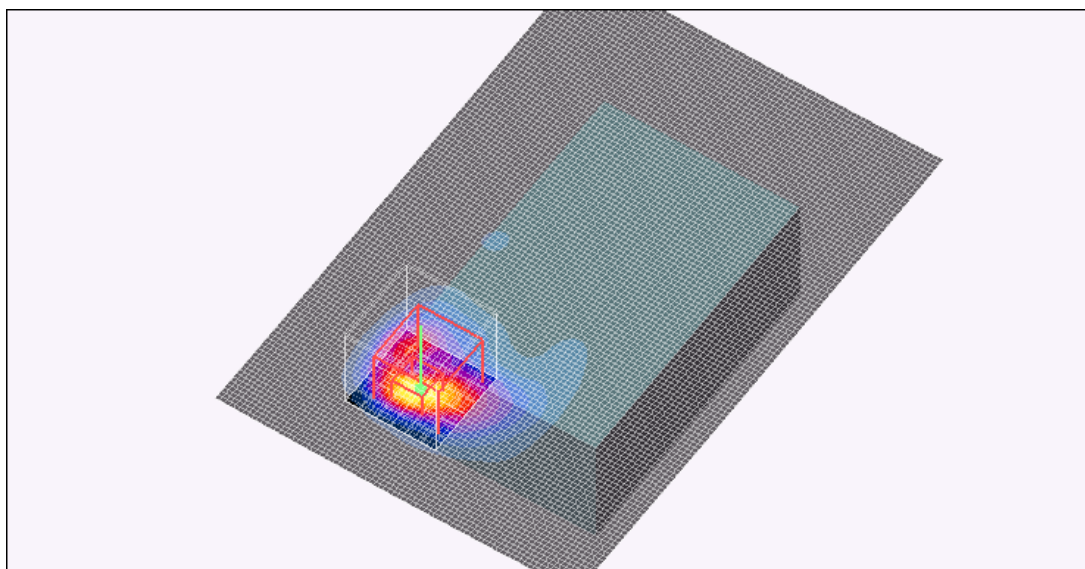
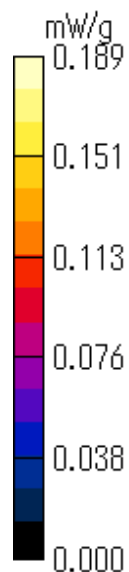
SAR(1 g) = 0.111 mW/g; SAR(10 g) = 0.047 mW/g

Maximum value of SAR (measured) = 0.189 mW/g

Test Date = 08/02/10

Ambient Temperature = 24.0 degree.C.

Liquid Temperature = Before 24.0 degree.C. , After 24.0 degree.C.



UL Japan, Inc.

Head Office EMC Lab.

4383-326 Asama-cho, Ise-shi, Mie-ken 516-0021 JAPAN

Telephone : +81 596 24 8116

Facsimile : +81 596 24 8124

<Check testing of Battery >

SG4G2-TB3 / Body / Front / Normal battery / WLAN 11b DBPSK (1Mbps) / 2437MHz

Duty Cycle: 1:1

Medium: M2450 Medium parameters used: $f = 2450$ MHz; $\sigma = 1.98$ mho/m; $\epsilon_r = 50.6$; $\rho = 1000$ kg/m³

Phantom section: Flat Section

DASY4 Configuration:

- Probe: EX3DV4 - SN3540; ConvF(8.05, 8.05, 8.05); Calibrated: 2010/07/13

- Sensor-Surface: 2mm (Mechanical Surface Detection)

- Phantom: Flat Phantom ELI4.0

- Measurement SW: DASY4, V4.7 Build 80; Postprocessing SW: SEMCAD, V1.8 Build 186

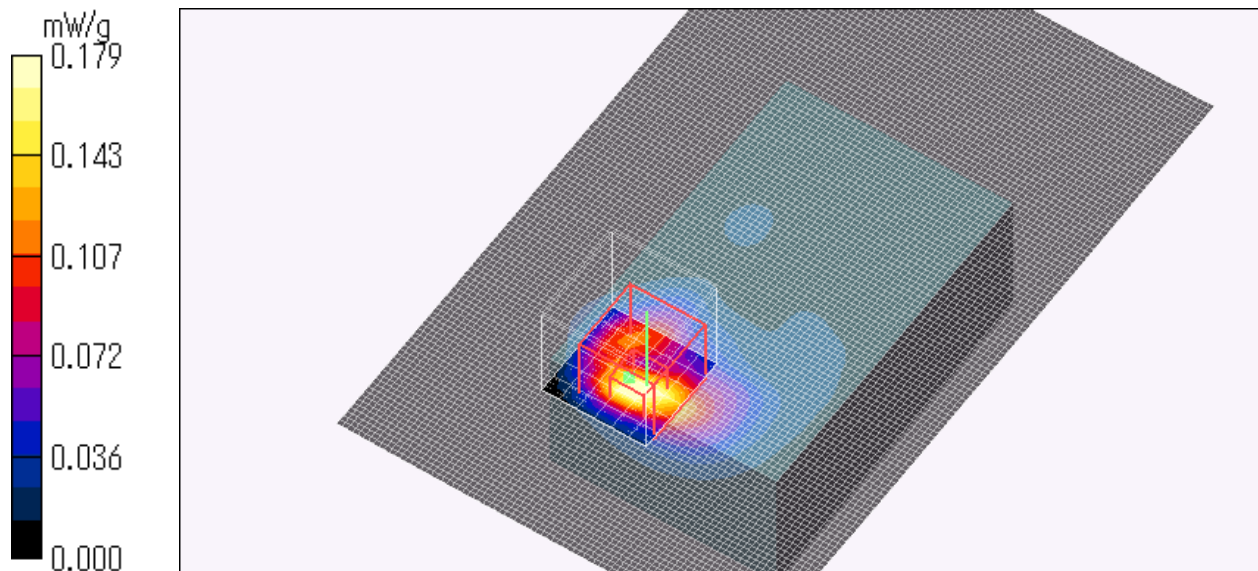
Area Scan (81x131x1): Measurement grid: $dx=15$ mm, $dy=15$ mm

Maximum value of SAR (interpolated) = 0.230 mW/g

Test Date = 08/02/10

Ambient Temperature = 24.0 degree.C.

Liquid Temperature = Before 24.3 degree.C. , After 24.3degree.C.



UL Japan, Inc.

Head Office EMC Lab.

4383-326 Asama-cho, Ise-shi, Mie-ken 516-0021 JAPAN

Telephone : +81 596 24 8116

Facsimile : +81 596 24 8124

SG4G2-TB3 / Body / Front / AAA size battery / WLAN 11b DBPSK (1Mbps) / 2462MHz

Duty Cycle: 1:1

Medium: M2450 Medium parameters used: $f = 2450$ MHz; $\sigma = 1.98$ mho/m; $\epsilon_r = 50.6$; $\rho = 1000$ kg/m³

Phantom section: Flat Section

DASY4 Configuration:

- Probe: EX3DV4 - SN3540; ConvF(8.05, 8.05, 8.05); Calibrated: 2010/07/13

- Sensor-Surface: 2mm (Mechanical Surface Detection)

- Phantom: Flat Phantom ELI4.0

- Measurement SW: DASY4, V4.7 Build 80; Postprocessing SW: SEMCAD, V1.8 Build 186

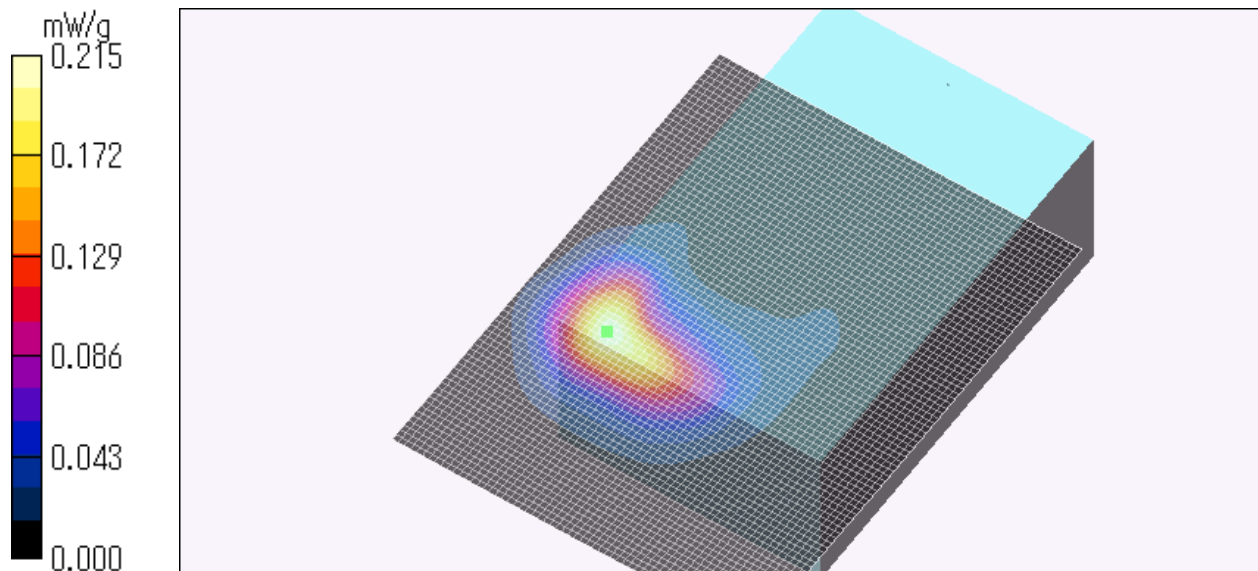
Area Scan (61x81x1): Measurement grid: dx=15mm, dy=15mm

Maximum value of SAR (interpolated) = 0.215 mW/g

Test Date = 08/02/10

Ambient Temperature = 24.0 degree.C.

Liquid Temperature = Before 24.0 degree.C. , After 24.0degree.C.



UL Japan, Inc.

Head Office EMC Lab.

4383-326 Asama-cho, Ise-shi, Mie-ken 516-0021 JAPAN

Telephone : +81 596 24 8116

Facsimile : +81 596 24 8124

Test report No. : 30GE0232-HO-02-E-R1
Page : 45 of 76
FCC ID : T9FG700SE
Issued date : August 19, 2010
Revised date : October 13, 2010

APPENDIX 3 : Test instruments

UL Japan, Inc.
Head Office EMC Lab.
4383-326 Asama-cho, Ise-shi, Mie-ken 516-0021 JAPAN
Telephone : +81 596 24 8116
Facsimile : +81 596 24 8124

1. Equipment used

Control No.	Instrument	Manufacturer	Model No	Serial No	Test Item	Calibration Date * Interval(month)
MAT-21	Attenuator(20dB)(above 1GHz)	HIROSE ELECTRIC CO.,LTD.	AT-120	901247	AT	2010/01/26 * 12
MCC-45*1	Microwave Cable	Murata	MXGS83RK3000	-	AT	2009/07/06 * 12
MPM-12	Power Meter	Anritsu	ML2495A	0825002	AT	2009/08/26 * 12
MPSE-17	Power sensor	Anritsu	MA2411B	0738285	AT	2009/08/26 * 12
MPM-01	Power Meter	Agilent	E4417A	GB41290639	SAR	2010/02/16 * 12
MPSE-01	Power Sensor	Agilent	E9300B	US40010300	SAR	2010/02/11 * 12
MPSE-03	Power sensor	Agilent	E9327A	US40440576	SAR	2010/02/19 * 12
MAT-15	Attenuator(30dB)	Agilent	8498A	US40010300	SAR	2010/02/24 * 12
MSG-10	Signal Generator	Agilent	N5181A	MY47421098	SAR	2009/06/30 * 24
MRFA-08	Pre Amplifier	TSJ	TCBP0206	-	SAR	2010/03/19 * 12
MHDC-12	Dual Directional Coupler	Hewlett Packard	772D	2839A0016	SAR	Pre Check
MNA-01	Network Analyzer	Agilent/HP	E8358A	US41080381	SAR	2009/08/28 * 12
MDPK-01	Dielectric probe kit	Agilent	85070D	-	SAR	Pre Check
MNCK-01	Type N Calibration Kit	Agilent	85032F	MY41495257	SAR	2009/08/28 * 12
MRENT-82	Dosimetric E-Field Probe	Schmid&Partner Engineering AG	EX3DV4	3540	SAR	2010/07/13 * 12
MDAE-01	Data Acquisition Electronics	Schmid&Partner Engineering AG	DAE3	509	SAR	2010/07/07 * 12
COTS-MSAR-01	DASY4	Schmid&Partner Engineering AG	DASY4 V4.7 Build80	-	SAR	-
COTS-MSAR-02	S-Parameter Network Analyzer	Agilent	-	-	SAR	-
MDA-07	Dipole Antenna	Schmid&Partner Engineering AG	D2450V2	713	SAR	2008/09/08 * 24
MPF-02	2mmOval Flat Phantom ERI 4.0	Schmid&Partner Engineering AG	QD VA 001B (ERI4.0)	1045	SAR	Pre Check
MOS-05	Thermo-Hygrometer	Custom	CTH-190	810201	SAR	2010/04/21 * 12
MOS-10	Digital thermometer	HANNA	Checktemp-2	MOS-10	SAR	2010/08/02 * 12
MBM-13	Barometer	Sunoh	SBR121	837	SAR	2008/03/14 * 36
MSL2450				Daily check Target value ± 5%		
SAR room				Daily check Ambient Noise<0.012W/kg		

The expiration date of the calibration is the end of the expired month.

As for some calibrations performed after the tested dates, those test equipment have been controlled by means of an unbroken chains of calibrations

*1 The Microwave Cable (MCC-45) was used in the power measurement on the July 22,2010.

UL Japan, Inc.

Head Office EMC Lab.

4383-326 Asama-cho, Ise-shi, Mie-ken 516-0021 JAPAN

Telephone : +81 596 24 8116

Facsimile : +81 596 24 8124

2. Dosimetry assessment setup

These measurements were performed with the automated near-field scanning system DASY4 from Schmid & Partner Engineering AG (SPEAG). The system is based on a high precision robot (working range greater than 0.9 m), which positions the probes with a positional repeatability of better than +/- 0.02 mm. Special E- and H-field probes have been developed for measurements close to material discontinuity, the sensors of which are directly loaded with a Schottky diode and connected via highly resistive lines to the data acquisition unit. The SAR measurements were conducted with the dosimetry probe EX3DV4, SN: 3540(manufactured by SPEAG), designed in the classical triangular configuration and optimized for dosimetric evaluation. The probe has been calibrated according to the procedure described in [2] with accuracy of better than +/-10%. The spherical isotropy was evaluated with the procedure described in [3] and found to be better than +/-0.25 dB. The phantom used was the SAM Twin Phantom as described in FCC supplement C, IEEE P1528 and CENELEC EN50361.

UL Japan, Inc.

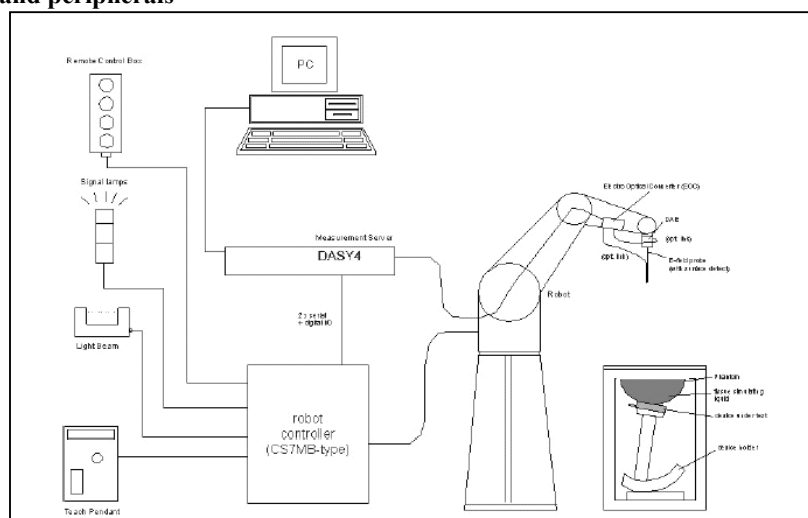
Head Office EMC Lab.

4383-326 Asama-cho, Ise-shi, Mie-ken 516-0021 JAPAN

Telephone : +81 596 24 8116

Facsimile : +81 596 24 8124

3. Configuration and peripherals



The DASY4 system for performing compliance tests consist of the following items:

1. A standard high precision 6-axis robot (Stäubli RX family) with controller and software.
An arm extension for accommodating the data acquisition electronics (DAE).
2. A dosimetric probe, i.e., an isotropic E-field probe optimized and calibrated for usage in tissue simulating liquid. The probe is equipped with an optical surface detector system.
3. A data acquisition electronic (DAE), which performs the signal amplification, signal multiplexing, AD-conversion, offset measurements, mechanical surface detection, collision detection, etc. The unit is battery powered with standard or rechargeable batteries. The signal is optically transmitted to the EOC.
4. The Electro-optical converter (EOC) performs the conversion between optical and electrical of the signals for the digital communication to the DAE and for the analog signal from the optical surface detection.
The EOC is connected to the measurement server.
5. The function of the measurement server is to perform the time critical tasks such as signal filtering, control of the robot operation and fast movement interrupts.
6. A probe alignment unit which improves the (absolute) accuracy of the probe positioning.
7. A computer operating Windows 2000.
8. DASY4 software.
9. Remote control with teaches pendant and additional circuitry for robot safety such as warning lamps, etc.
10. The 2mm Flat phantom ERI4.0
11. The device holder for handheld mobile phones.
12. Tissue simulating liquid mixed according to the given recipes.
13. Validation dipole kits allowing to validate the proper functioning of the system.

UL Japan, Inc.

Head Office EMC Lab.

4383-326 Asama-cho, Ise-shi, Mie-ken 516-0021 JAPAN

Telephone : +81 596 24 8116

Facsimile : +81 596 24 8124

4. System components

EX3DV4 Probe Specification

Construction:

Symmetrical design with triangular core

Built-in shielding against static charges

PEEK enclosure material (resistant to organic solvents, e.g., glycol ether)

Calibration:

Basic Broad Band calibration in air : 10-3000 MHz

Conversion Factors (Head and Body):

Frequency:

10 MHz to > 6GHz; Linearity: +/-0.2 dB(30 MHz to 3 GHz)

Directivity:

+/-0.3 dB in HSL (rotation around probe axis)

+/-0.5 dB in tissue material (rotation normal probe axis)

Dynamic Range:

10uW/g to > 100 mW/g; Linearity: +/-0.2 dB(noise: typically < 1uW/g)

Dimensions:

Overall length: 330 mm (Tip: 20 mm)

Tip diameter: 2.5mm (Body: 12 mm)

Typical distance from probe tip to dipole centers: 1 mm

Application:

Highprecision dosimetric measurement in any exposure scenario (e.g., very strong gradient fields). Only probe which enables compliance testing for frequencies up to 6GHz with precision of better 30%.



EX3DV4 E-field Probe

UL Japan, Inc.

Head Office EMC Lab.

4383-326 Asama-cho, Ise-shi, Mie-ken 516-0021 JAPAN

Telephone : +81 596 24 8116

Facsimile : +81 596 24 8124

2mm Flat phantom ERI4.0

Description

Phantom for compliance testing of handheld and body-mounted wireless devices in the frequency range of 30 MHz to 6 GHz. ELI4 is fully compatible with the latest draft of the standard IEC 62209 Part II and all known tissue simulating liquids. ELI4 has been optimized regarding its performance and can be integrated into our standard phantom tables. A cover prevents evaporation of the liquid. Reference markings on the phantom allow installation of the complete setup, including all predefined phantom positions and measurement grids, by teaching three points. The phantom is supported by software version DASY4.5 and higher and is compatible with all SPEAG dosimetric probes and dipoles.

Shell Thickness

2.0 ± 0.2 mm (sagging: <1%)

Filling Volume

approx. 30 liters

Dimensions

Major ellipse axis : 600 mm

Minor axis : 400 mm

Compatibilities

- Standard: IEC 62209 Part II (Draft 0.9 and higher)
- Software release: DASY 4.5 or higher
- SPEAG standard phantom table
- all SPEAG dosimetric probes and dipoles

Device Holder

For this measurement, the urethane foam was used as device holder.

UL Japan, Inc.

Head Office EMC Lab.

4383-326 Asama-cho, Ise-shi, Mie-ken 516-0021 JAPAN

Telephone : +81 596 24 8116

Facsimile : +81 596 24 8124

5. Test system specifications

Robot RX60L

Number of Axes	:	6
Payload	:	1.6 kg
Reach	:	800mm
Repeatability	:	+/-0.025mm
Control Unit	:	CS7M
Programming Language	:	V+
Manufacture	:	Stäubli Unimation Corp. Robot Model: RX60

DASY4 Measurement server

Features	:	166MHz low power Pentium MMX 32MB chipdisk and 64MB RAM Serial link to DAE (with watchdog supervision) 16 Bit A/D converter for surface detection system Two serial links to robot (one for real-time communication which is supervised by watchdog) Ethernet link to PC (with watchdog supervision) Emergency stop relay for robot safety chain Two expansion slots for future applications
Manufacture	:	Schimid & Partner Engineering AG

Data Acquisition Electronic (DAE)

Features	:	Signal amplifier, multiplexer, A/D converter and control logic Serial optical link for communication with DASY4 embedded system (fully remote controlled) 2 step probe touch detector for mechanical surface detection and emergency robot stop (not in -R version)
Measurement Range	:	1 μ V to > 200 mV (16 bit resolution and two range settings: 4mV, 400mV)
Input Offset voltage	:	< 1 μ V (with auto zero)
Input Resistance	:	200 M Ω
Battery Power	:	> 10 h of operation (with two 9 V battery)
Dimension	:	60 x 60 x 68 mm
Manufacture	:	Schimid & Partner Engineering AG

Software

Item	:	Dosimetric Assesment System DASY4
Type No.	:	SD 000 401A, SD 000 402A
Software version No.	:	DASY4 V4.7 Build80
Manufacture / Origin	:	Schimid & Partner Engineering AG

E-Field Probe

Model	:	EX3DV4
Serial No.	:	3540
Construction	:	Symmetrical design with triangular core
Frequency	:	10 MHz to 6 GHz
Linearity	:	+/-0.2 dB (30 MHz to 3 GHz)
Manufacture	:	Schimid & Partner Engineering AG

Phantom

Type	:	2mm
Shell Thickness	:	2.0 \pm 0.2 mm (sagging: <1%)
Filling Volume	:	approx. 30 liters
Dimensions	:	Major ellipse axis: 600 mm Minor axis: 400 mm
Manufacture	:	Schimid & Partner Engineering AG

UL Japan, Inc. Head Office EMC Lab.

4383-326 Asama-cho, Ise-shi, Mie-ken 516-0021 JAPAN

Telephone : +81 596 24 8116

Facsimile : +81 596 24 8124

6. Simulated Tissues Composition (2450MHz)

Ingredient	MIXTURE(%)
	Muscle 2450MHz
Water	68.64
DGMBE	31.37

Note:DGMBE(Diethylenglycol-monobuthyl ether)

7. Simulated Tissue Liquid Parameter confirmation (2450MHz)

The dielectric parameters were checked prior to assessment using the HP85070D dielectric probe kit. The dielectric parameters measurement are reported in each correspondent section.

Muscle 2450 MHz

Type of liquid : **Muscle 2450 MHz**
Ambient temperature (deg.c.) : **24.0**
Relative Humidity (%) : **58**
Liquid depth (cm) : **15.0**

DIELECTRIC PARAMETERS MEASUREMENT RESULTS								
Date	Frequency	Liquid Temp [deg.c]		Parameters	Target Value*1	Measured	Deviation [%]	Limit [%]
		Before	After					
2-Aug	2450	24.3	24.3	Relative Permittivity ϵ_r	52.7	50.6	-4.0	+/-5
				Coductivity σ [mho/m]	1.95	1.98	1.5	+/-5

*1 The target values is a parameter defined in FCC OET 65.

DIELECTRIC PARAMETERS MEASUREMENT RESULTS								
Date	Frequency	Liquid Temp [deg.c]		Parameters	Target Value*2	Measured	Deviation [%]	Limit [%]
		Before	After					
2-Aug	2450	24.3	24.3	Relative Permittivity ϵ_r	50.6	50.6	0.0	+/-10
				Coconductivity σ [mho/m]	1.96	1.98	1.0	+/-10

*2 The target value is the medium parameters used in the calibrated dipole validation report data. (D2450V2 SN:713 / p63)

UL Japan, Inc.

Head Office EMC Lab.

4383-326 Asama-cho, Ise-shi, Mie-ken 516-0021 JAPAN

Telephone : +81 596 24 8116

Facsimile : +81 596 24 8124

8. Body System validation of 2450MHz

We performed the system validation based on FCC requirement, [The 1-g or 10-g SAR values measured using the required tissue dielectric parameters should be within 10% of manufacturer calibrated dipole SAR values. However these manufacturer calibrated dipole target SAR values should be substantially similar to those defined in IEEE Standard 1528.] and FCC permits [SAR system verification with the actual liquid used for DUT SAR measurement should be the default operating procedures.]

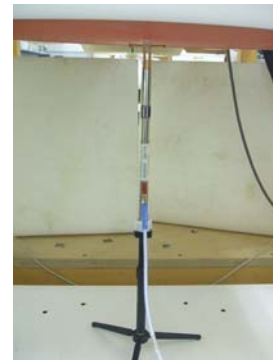
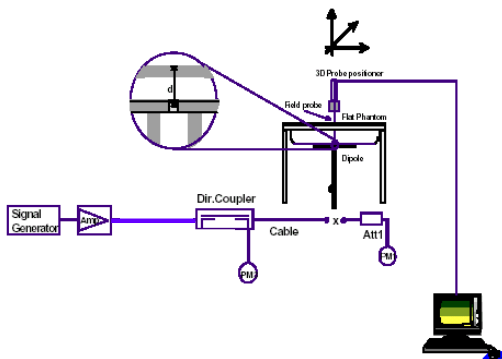
We confirmed the this dipole manufacture's validation date for head is within 5% against IEEE Standard 1528. so we can only use Body liquid validation data for our system verification

Type of liquid : **Muscle 2450MHz**
Frequency : **2450MHz**
Ambient temperature (deg.c.) : **24.0**
Relative Humidity (%) : **58**
Dipole : **D2450V2 SN:713**
Power : **250mW**

SYSTEM PERFORMANCE CHECK										
Date	Liquid (Muscle 2450MHz)						System dipole validation target & measured			
	Liquid Temp [deg.c.]		Relative Permittivity ϵ_r		Conductivity σ [mho/m]		SAR 1g [W/kg]		Deviation [%]	Limit [%]
	Before	After	Target	Measured	Target	Measured	Target*2	Measured		
2-Aug	24.3	24.3	50.6	50.6	1.96	1.98	12.1	12.9	6.6	+/-10

*2 The target value is a manufacturer calibrated dipole 1g SAR value. (D2450V2 SN:713)

Note: Please refer to Attachment for the result representation in plot format



2450MHz System performance check setup

Test system for the system performance check setup diagram

9. Validation uncertainty

The uncertainty budget has been determined for the DASY4 measurement system according to the SPEAG documents[6][7] and is given in the following Table.

Error Description	Uncertainty value \pm %	Probability distribution	divisor	(ci) 1g	Standard Uncertainty (1g)	vi or veff
Measurement System						
Probe calibration	± 6.8	Normal	1	1	± 6.8	∞
Axial isotropy of the probe	± 4.7	Rectangular	$\sqrt{3}$	1	± 2.7	∞
Spherical isotropy of the probe	± 9.6	Rectangular	0	0	0	∞
Boundary effects	± 2.0	Rectangular	$\sqrt{3}$	1	± 1.2	∞
Probe linearity	± 4.7	Rectangular	$\sqrt{3}$	1	± 2.7	∞
Detection limit	± 1.0	Rectangular	$\sqrt{3}$	1	± 0.6	∞
Readout electronics	± 0.3	Normal	1	1	± 0.3	∞
Response time	0	Rectangular	$\sqrt{3}$	1	0	∞
Integration time	0	Rectangular	$\sqrt{3}$	1	0	∞
RF ambient Noise	± 3.0	Rectangular	$\sqrt{3}$	1	± 1.7	∞
RF ambient Reflections	± 3.0	Rectangular	$\sqrt{3}$	1	± 1.7	∞
Probe Positioner	± 0.8	Rectangular	$\sqrt{3}$	1	± 0.5	∞
Probe positioning	± 9.9	Rectangular	1	1	± 5.7	∞
Algorithms for Max.SAR Eval.	± 4.0	Rectangular	$\sqrt{3}$	1	± 2.3	∞
Dipole						
Dipole Axis to Liquid Distance	± 2.0	Rectangular	$\sqrt{3}$	1	± 1.2	∞
Input power and SAR drift meas.	± 4.7	Rectangular	$\sqrt{3}$	1	± 2.7	∞
Phantom and Setup						
Phantom uncertainty	± 4.0	Rectangular	$\sqrt{3}$	1	± 2.3	∞
Liquid conductivity (target)	± 5.0	Rectangular	$\sqrt{3}$	0.64	± 1.8	∞
Liquid conductivity (meas.)	± 5.0	Rectangular	1	0.64	± 3.2	∞
Liquid permittivity (target)	± 5.0	Rectangular	$\sqrt{3}$	0.6	± 1.7	∞
Liquid permittivity (meas.)	± 5.0	Rectangular	1	0.6	± 3.0	∞
Combined Standard Uncertainty					± 12.079	
Expanded Uncertainty (k=2)					± 24.2	

UL Japan, Inc.

Head Office EMC Lab.

4383-326 Asama-cho, Ise-shi, Mie-ken 516-0021 JAPAN

Telephone : +81 596 24 8116

Facsimile : +81 596 24 8124

10. Validation Measurement data (2450MHz)

BODY 2450MHzSystem Validation / Dipole 2450 MHz / Forward Conducted Power : 250mW

Duty Cycle: 1:1

Medium: M2450 Medium parameters used: $f = 2450$ MHz; $\sigma = 1.98$ mho/m; $\epsilon_r = 50.6$; $\rho = 1000$ kg/m³

Phantom section: Flat Section

DASY4 Configuration:

- Probe: EX3DV4 - SN3540; ConvF(8.05, 8.05, 8.05); Calibrated: 2010/07/13

- Sensor-Surface: 2mm (Mechanical Surface Detection)

- Phantom: Flat Phantom ELI4.0

- Measurement SW: DASY4, V4.7 Build 80; Postprocessing SW: SEMCAD, V1.8 Build 186

Area Scan (61x61x1): Measurement grid: $dx=15$ mm, $dy=15$ mm

Maximum value of SAR (interpolated) = 20.2 mW/g

Zoom Scan (7x7x7)/Cube 0: Measurement grid: $dx=5$ mm, $dy=5$ mm, $dz=5$ mm

Reference Value = 98.8 V/m; Power Drift = 0.003 dB

Peak SAR (extrapolated) = 26.4 W/kg

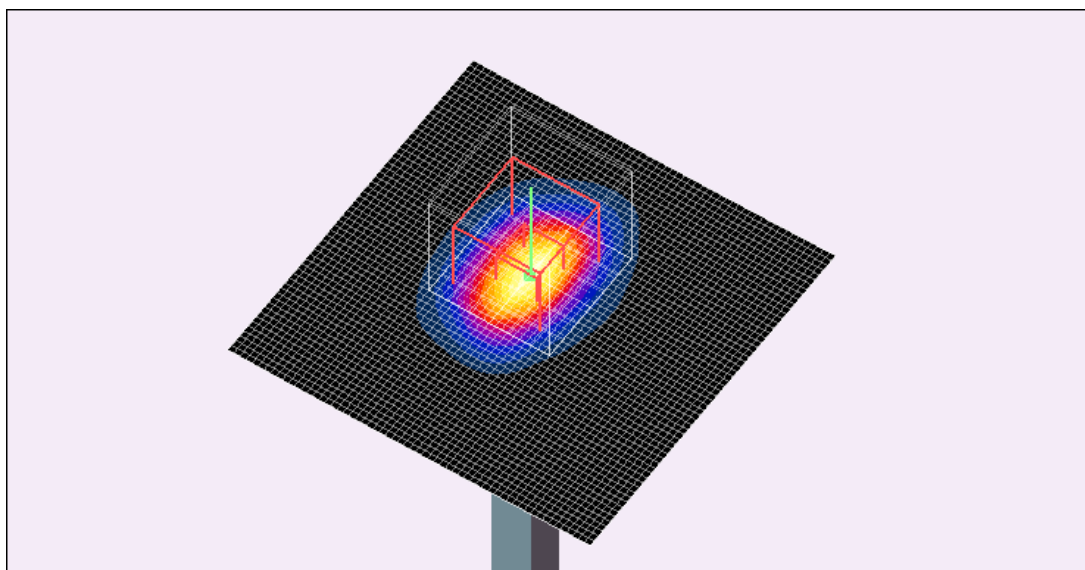
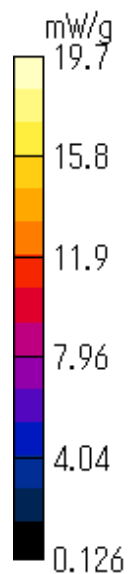
SAR(1 g) = 12.9 mW/g; SAR(10 g) = 5.97 mW/g

Maximum value of SAR (measured) = 19.7 mW/g

Test Date = 08/02/10

Ambient Temperature = 24.0 degree.C.

Liquid Temperature = Before 24.3 degree.C. , After 24.3 degree.C.



UL Japan, Inc.

Head Office EMC Lab.

4383-326 Asama-cho, Ise-shi, Mie-ken 516-0021 JAPAN

Telephone : +81 596 24 8116

Facsimile : +81 596 24 8124

11. System Validation Dipole (D2450V2,S/N: 713)

Calibration Laboratory of
 Schmid & Partner
 Engineering AG
 Zeughausstrasse 43, 8004 Zurich, Switzerland



S Schweizerischer Kalibrierdienst
 C Service suisse d'étalonnage
 S Servizio svizzero di taratura
 S Swiss Calibration Service

Accredited by the Swiss Accreditation Service (SAS)
 The Swiss Accreditation Service is one of the signatories to the EA
 Multilateral Agreement for the recognition of calibration certificates

Accreditation No.: SCS 108

Client **UL Japan (MTT)**

Certificate No: **D2450V2-713_Sep08**

CALIBRATION CERTIFICATE																																															
Object	D2450V2 - SN: 713																																														
Calibration procedure(s)	QA CAL-05.v7 Calibration procedure for dipole validation kits																																														
Calibration date:	September 08, 2008																																														
Condition of the calibrated item	In Tolerance																																														
<p>This calibration certificate documents the traceability to national standards, which realize the physical units of measurements (SI). The measurements and the uncertainties with confidence probability are given on the following pages and are part of the certificate.</p> <p>All calibrations have been conducted in the closed laboratory facility: environment temperature (22 ± 3)°C and humidity < 70%.</p> <p>Calibration Equipment used (M&TE critical for calibration)</p> <table border="1"> <thead> <tr> <th>Primary Standards</th> <th>ID #</th> <th>Cal Date (Certificate No.)</th> <th>Scheduled Calibration</th> </tr> </thead> <tbody> <tr> <td>Power meter EPM-442A</td> <td>GB37480704</td> <td>04-Oct-07 (No. 217-00736)</td> <td>Oct-08</td> </tr> <tr> <td>Power sensor HP 8481A</td> <td>US37292783</td> <td>04-Oct-07 (No. 217-00736)</td> <td>Oct-08</td> </tr> <tr> <td>Reference 20 dB Attenuator</td> <td>SN: S5086 (20g)</td> <td>01-Jul-08 (No. 217-00864)</td> <td>Jul-09</td> </tr> <tr> <td>Type-N mismatch combination</td> <td>SN: 5047.2 / 06327</td> <td>01-Jul-08 (No. 217-00867)</td> <td>Jul-09</td> </tr> <tr> <td>Reference Probe ES3DV2</td> <td>SN: 3025</td> <td>28-Apr-08 (No. ES3-3025_Apr08)</td> <td>Apr-09</td> </tr> <tr> <td>DAE4</td> <td>SN: 601</td> <td>14-Mar-08 (No. DAE4-601_Mar08)</td> <td>Mar-09</td> </tr> </tbody> </table> <table border="1"> <thead> <tr> <th>Secondary Standards</th> <th>ID #</th> <th>Check Date (in house)</th> <th>Scheduled Check</th> </tr> </thead> <tbody> <tr> <td>Power sensor HP 8481A</td> <td>MY41092317</td> <td>18-Oct-02 (in house check Oct-07)</td> <td>In house check: Oct-09</td> </tr> <tr> <td>RF generator R&S SMT-06</td> <td>100005</td> <td>4-Aug-99 (in house check Oct-07)</td> <td>In house check: Oct-09</td> </tr> <tr> <td>Network Analyzer HP 8753E</td> <td>US37390585 S4206</td> <td>18-Oct-01 (in house check Oct-07)</td> <td>In house check: Oct-08</td> </tr> </tbody> </table>				Primary Standards	ID #	Cal Date (Certificate No.)	Scheduled Calibration	Power meter EPM-442A	GB37480704	04-Oct-07 (No. 217-00736)	Oct-08	Power sensor HP 8481A	US37292783	04-Oct-07 (No. 217-00736)	Oct-08	Reference 20 dB Attenuator	SN: S5086 (20g)	01-Jul-08 (No. 217-00864)	Jul-09	Type-N mismatch combination	SN: 5047.2 / 06327	01-Jul-08 (No. 217-00867)	Jul-09	Reference Probe ES3DV2	SN: 3025	28-Apr-08 (No. ES3-3025_Apr08)	Apr-09	DAE4	SN: 601	14-Mar-08 (No. DAE4-601_Mar08)	Mar-09	Secondary Standards	ID #	Check Date (in house)	Scheduled Check	Power sensor HP 8481A	MY41092317	18-Oct-02 (in house check Oct-07)	In house check: Oct-09	RF generator R&S SMT-06	100005	4-Aug-99 (in house check Oct-07)	In house check: Oct-09	Network Analyzer HP 8753E	US37390585 S4206	18-Oct-01 (in house check Oct-07)	In house check: Oct-08
Primary Standards	ID #	Cal Date (Certificate No.)	Scheduled Calibration																																												
Power meter EPM-442A	GB37480704	04-Oct-07 (No. 217-00736)	Oct-08																																												
Power sensor HP 8481A	US37292783	04-Oct-07 (No. 217-00736)	Oct-08																																												
Reference 20 dB Attenuator	SN: S5086 (20g)	01-Jul-08 (No. 217-00864)	Jul-09																																												
Type-N mismatch combination	SN: 5047.2 / 06327	01-Jul-08 (No. 217-00867)	Jul-09																																												
Reference Probe ES3DV2	SN: 3025	28-Apr-08 (No. ES3-3025_Apr08)	Apr-09																																												
DAE4	SN: 601	14-Mar-08 (No. DAE4-601_Mar08)	Mar-09																																												
Secondary Standards	ID #	Check Date (in house)	Scheduled Check																																												
Power sensor HP 8481A	MY41092317	18-Oct-02 (in house check Oct-07)	In house check: Oct-09																																												
RF generator R&S SMT-06	100005	4-Aug-99 (in house check Oct-07)	In house check: Oct-09																																												
Network Analyzer HP 8753E	US37390585 S4206	18-Oct-01 (in house check Oct-07)	In house check: Oct-08																																												
Calibrated by:	Name Jeton Kastrot	Function Laboratory Technician	Signature 																																												
Approved by:	Name Katja Pokovic	Function Technical Manager	Signature 																																												
			Issued: September 9, 2008																																												
This calibration certificate shall not be reproduced except in full without written approval of the laboratory.																																															

Calibration Laboratory of
Schmid & Partner
Engineering AG
Zeughausstrasse 43, 8004 Zurich, Switzerland



S Schweizerischer Kalibrierdienst
C Service suisse d'étalonnage
S Servizio svizzero di taratura
S Swiss Calibration Service

Accredited by the Swiss Accreditation Service (SAS)
The Swiss Accreditation Service is one of the signatories to the EA
Multilateral Agreement for the recognition of calibration certificates

Accreditation No.: **SCS 108**

Glossary:

TSL tissue simulating liquid
ConvF sensitivity in TSL / NORM x,y,z
N/A not applicable or not measured

Calibration is Performed According to the Following Standards:

- a) IEEE Std 1528-2003, "IEEE Recommended Practice for Determining the Peak Spatial-Averaged Specific Absorption Rate (SAR) in the Human Head from Wireless Communications Devices: Measurement Techniques", December 2003
- b) IEC 62209-1, "Procedure to measure the Specific Absorption Rate (SAR) for hand-held devices used in close proximity to the ear (frequency range of 300 MHz to 3 GHz)", February 2005
- c) Federal Communications Commission Office of Engineering & Technology (FCC OET), "Evaluating Compliance with FCC Guidelines for Human Exposure to Radiofrequency Electromagnetic Fields; Additional Information for Evaluating Compliance of Mobile and Portable Devices with FCC Limits for Human Exposure to Radiofrequency Emissions", Supplement C (Edition 01-01) to Bulletin 65

Additional Documentation:

- d) DASY4/5 System Handbook

Methods Applied and Interpretation of Parameters:

- *Measurement Conditions:* Further details are available from the Validation Report at the end of the certificate. All figures stated in the certificate are valid at the frequency indicated.
- *Antenna Parameters with TSL:* The dipole is mounted with the spacer to position its feed point exactly below the center marking of the flat phantom section, with the arms oriented parallel to the body axis.
- *Feed Point Impedance and Return Loss:* These parameters are measured with the dipole positioned under the liquid filled phantom. The impedance stated is transformed from the measurement at the SMA connector to the feed point. The Return Loss ensures low reflected power. No uncertainty required.
- *Electrical Delay:* One-way delay between the SMA connector and the antenna feed point. No uncertainty required.
- *SAR measured:* SAR measured at the stated antenna input power.
- *SAR normalized:* SAR as measured, normalized to an input power of 1 W at the antenna connector.
- *SAR for nominal TSL parameters:* The measured TSL parameters are used to calculate the nominal SAR result.

UL Japan, Inc.

Head Office EMC Lab.

4383-326 Asama-cho, Ise-shi, Mie-ken 516-0021 JAPAN

Telephone : +81 596 24 8116

Facsimile : +81 596 24 8124

Measurement Conditions

DASY system configuration, as far as not given on page 1.

DASY Version	DASY5	V5.0
Extrapolation	Advanced Extrapolation	
Phantom	Modular Flat Phantom V5.0	
Distance Dipole Center - TSL	10 mm	with Spacer
Zoom Scan Resolution	dx, dy, dz = 5 mm	
Frequency	2450 MHz ± 1 MHz	

Head TSL parameters

The following parameters and calculations were applied.

	Temperature	Permittivity	Conductivity
Nominal Head TSL parameters	22.0 °C	39.2	1.80 mho/m
Measured Head TSL parameters	(22.0 ± 0.2) °C	39.8 ± 6 %	1.80 mho/m ± 6 %
Head TSL temperature during test	(22.0 ± 0.2) °C	----	----

SAR result with Head TSL

SAR averaged over 1 cm ³ (1 g) of Head TSL	Condition	
SAR measured	250 mW input power	12.7 mW / g
SAR normalized	normalized to 1W	50.8 mW / g
SAR for nominal Head TSL parameters ¹	normalized to 1W	51.2 mW / g ± 17.0 % (k=2)

SAR averaged over 10 cm ³ (10 g) of Head TSL	condition	
SAR measured	250 mW input power	5.91 mW / g
SAR normalized	normalized to 1W	23.6 mW / g
SAR for nominal Head TSL parameters ¹	normalized to 1W	23.8 mW / g ± 16.5 % (k=2)

¹ Correction to nominal TSL parameters according to d), chapter "SAR Sensitivities"

Body TSL parameters

The following parameters and calculations were applied.

	Temperature	Permittivity	Conductivity
Nominal Body TSL parameters	22.0 °C	52.7	1.95 mho/m
Measured Body TSL parameters	(22.0 ± 0.2) °C	50.7 ± 6 %	1.97 mho/m ± 6 %
Body TSL temperature during test	(22.5 ± 0.2) °C	---	---

SAR result with Body TSL

SAR averaged over 1 cm ³ (1 g) of Body TSL	Condition	
SAR measured	250 mW input power	12.1 mW / g
SAR normalized	normalized to 1W	48.4 mW / g
SAR for nominal Body TSL parameters ²	normalized to 1W	47.1 mW / g ± 17.0 % (k=2)

SAR averaged over 10 cm ³ (10 g) of Body TSL	condition	
SAR measured	250 mW input power	5.68 mW / g
SAR normalized	normalized to 1W	22.7 mW / g
SAR for nominal Body TSL parameters ²	normalized to 1W	22.3 mW / g ± 16.5 % (k=2)

² Correction to nominal TSL parameters according to d), chapter "SAR Sensitivities"

Appendix

Antenna Parameters with Head TSL

Impedance, transformed to feed point	51.8 Ω + 1.6 j Ω
Return Loss	- 32.7 dB

Antenna Parameters with Body TSL

Impedance, transformed to feed point	48.2 Ω + 3.5 j Ω
Return Loss	- 28.1 dB

General Antenna Parameters and Design

Electrical Delay (one direction)	1.159 ns
----------------------------------	----------

After long term use with 100W radiated power, only a slight warming of the dipole near the feedpoint can be measured.

The dipole is made of standard semirigid coaxial cable. The center conductor of the feeding line is directly connected to the second arm of the dipole. The antenna is therefore short-circuited for DC-signals.

No excessive force must be applied to the dipole arms, because they might bend or the soldered connections near the feedpoint may be damaged.

Additional EUT Data

Manufactured by	SPEAG
Manufactured on	July 05, 2002

UL Japan, Inc.

Head Office EMC Lab.

4383-326 Asama-cho, Ise-shi, Mie-ken 516-0021 JAPAN

Telephone : +81 596 24 8116

Facsimile : +81 596 24 8124

DASY5 Validation Report for Head TSL

Date/Time: 08.09.2008 12:47:07

Test Laboratory: SPEAG, Zurich, Switzerland

DUT: Dipole 2450 MHz; Type: D2450V2; Serial: D2450V2 - SN713

Communication System: CW; Frequency: 2450 MHz; Duty Cycle: 1:1

Medium: HSL U10 BB

Medium parameters used: $f = 2450$ MHz; $\sigma = 1.8$ mho/m; $\epsilon_r = 39.8$; $\rho = 1000$ kg/m³

Phantom section: Flat Section

Measurement Standard: DASY5 (IEEE/IEC)

DASY5 Configuration:

- Probe: ES3DV2 - SN3025; ConvF(4.4, 4.4, 4.4); Calibrated: 28.04.2008
- Sensor-Surface: 3.4mm (Mechanical Surface Detection)
- Electronics: DAE4 Sn601; Calibrated: 14.03.2008
- Phantom: Flat Phantom 5.0 (front); Type: QD000P50AA; Serial: 1001
- Measurement SW: DASY5, V5.0 Build 119; SEMCAD X Version 13.2 Build 87

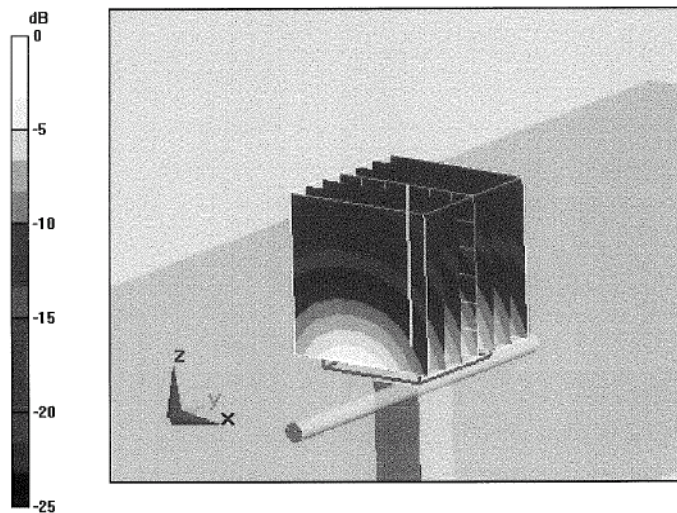
Pin = 250 mW; d = 10 mm/Zoom Scan (7x7x7)/Cube 0: Measurement grid: dx=5mm, dy=5mm, dz=5mm

Reference Value = 94.8 V/m; Power Drift = 0.012 dB

Peak SAR (extrapolated) = 26.7 W/kg

SAR(1 g) = 12.7 mW/g; SAR(10 g) = 5.91 mW/g

Maximum value of SAR (measured) = 15.3 mW/g



0 dB = 15.3mW/g

UL Japan, Inc.

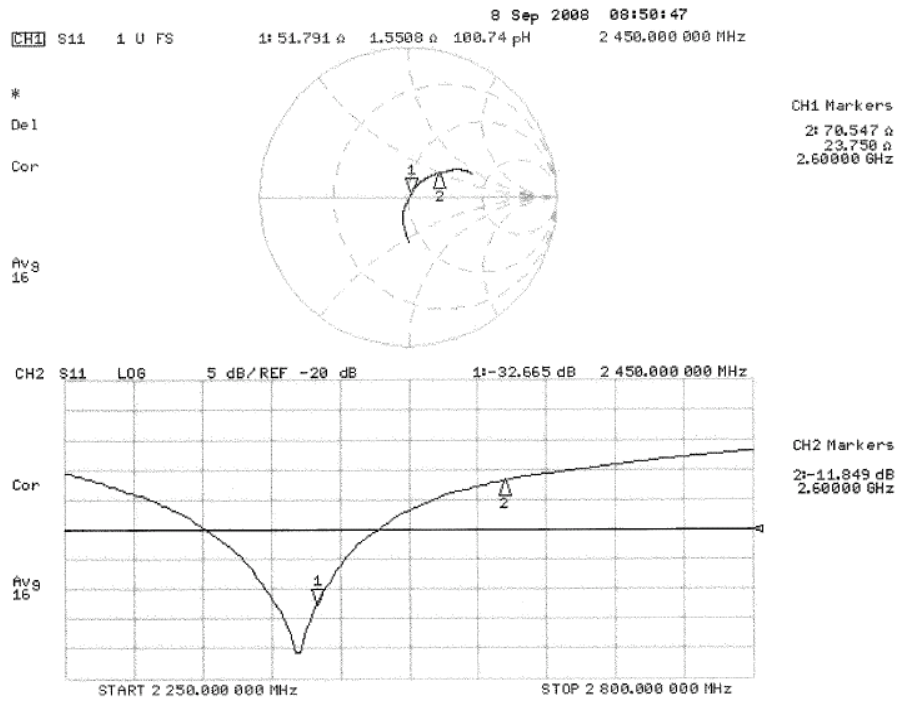
Head Office EMC Lab.

4383-326 Asama-cho, Ise-shi, Mie-ken 516-0021 JAPAN

Telephone : +81 596 24 8116

Facsimile : +81 596 24 8124

Impedance Measurement Plot for Head TSL



DASY5 Validation Report for Body TSL

Date/Time: 08.09.2008 15:47:52

DUT: Dipole 2450 MHz; Type: D2450V2; Serial: D2450V2 - SN:713

Communication System: CW; Frequency: 2450 MHz; Duty Cycle: 1:1

Medium: MSL U10 BB

Medium parameters used: $f = 2450$ MHz; $\sigma = 1.96$ mho/m; $\epsilon_r = 50.6$; $\rho = 1000$ kg/m³

Phantom section: Flat Section

Measurement Standard: DASY5 (IEEE/IEC)

DASY5 Configuration:

- Probe: ES3DV2 - SN3025; ConvF(4.07, 4.07, 4.07); Calibrated: 28.04.2008
- Sensor-Surface: 3.4mm (Mechanical Surface Detection)
- Electronics: DAE4 Sn601; Calibrated: 14.03.2008
- Phantom: Flat Phantom 5.0 (back); Type: QD000P50AA; Serial: 1002
- Measurement SW: DASY5, V5.0 Build 119; SEMCAD X Version 13.2 Build 87

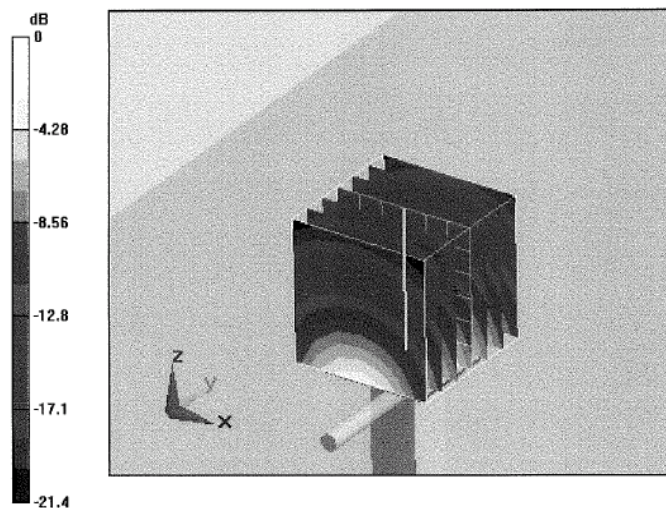
Pin = 250 mW; d = 10 mm/Zoom Scan (7x7x7)/Cube 0: Measurement grid: dx=5mm, dy=5mm, dz=5mm

Reference Value = 90.5 V/m; Power Drift = 0.00036 dB

Peak SAR (extrapolated) = 24 W/kg

SAR(1 g) = 12.1 mW/g; SAR(10 g) = 5.68 mW/g

Maximum value of SAR (measured) = 15.1 mW/g



0 dB = 15.1mW/g

UL Japan, Inc.

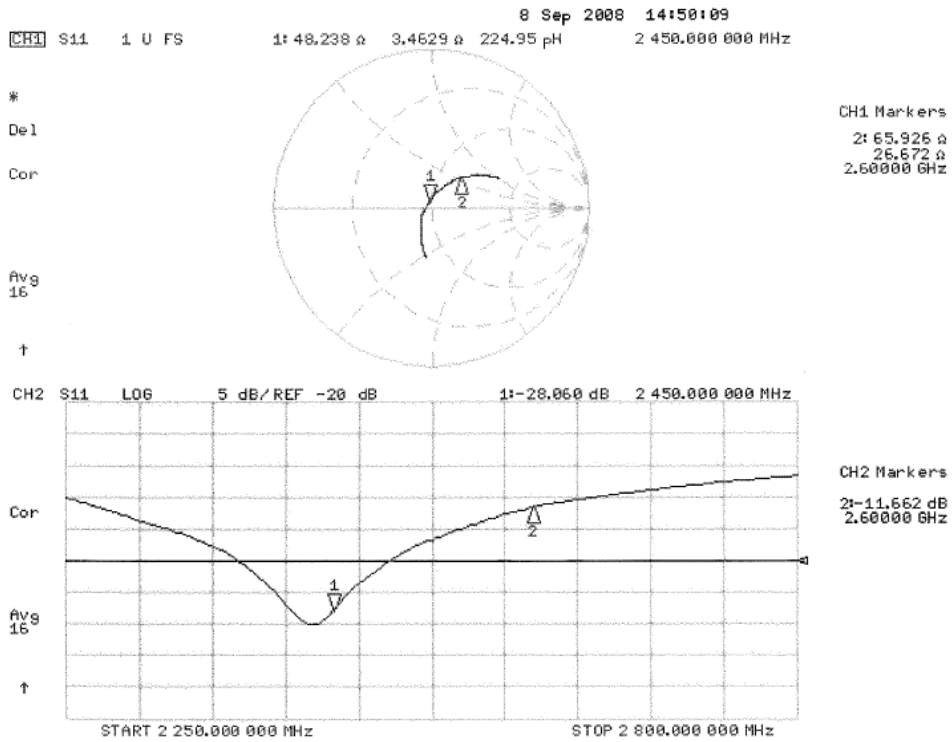
Head Office EMC Lab.

4383-326 Asama-cho, Ise-shi, Mie-ken 516-0021 JAPAN

Telephone : +81 596 24 8116

Facsimile : +81 596 24 8124

Impedance Measurement Plot for Body TSL



12. Dosimetric E-Field Probe Calibration (EX3DV4,S/N: 3540)

Calibration Laboratory of
Schmid & Partner
Engineering AG
Zeughausstrasse 43, 8004 Zurich, Switzerland



S Schweizerischer Kalibrierdienst
C Service suisse d'étalonnage
S Servizio svizzero di taratura
S Swiss Calibration Service

Accredited by the Swiss Accreditation Service (SAS)
The Swiss Accreditation Service is one of the signatories to the EA
Multilateral Agreement for the recognition of calibration certificates

Accreditation No.: SCS 108

Client PTT

Certificate No: EX3-3540_Jul10

CALIBRATION CERTIFICATE

Object EX3DV4 - SN:3540

Calibration procedure(s) QA CAL-01.v6, QA CAL-14.v3, QA CAL-23.v3 and QA CAL-25.v2
Calibration procedure for dosimetric E-field probes

Calibration date: July 13, 2010

This calibration certificate documents the traceability to national standards, which realize the physical units of measurements (SI).
The measurements and the uncertainties with confidence probability are given on the following pages and are part of the certificate.

All calibrations have been conducted in the closed laboratory facility: environment temperature (22 ± 3)°C and humidity < 70%.

Calibration Equipment used (M&TE critical for calibration)

Primary Standards	ID #	Cal Date (Certificate No.)	Scheduled Calibration
Power meter E4419B	GB41293874	1-Apr-10 (No. 217-01136)	Apr-11
Power sensor E4412A	MY41495277	1-Apr-10 (No. 217-01136)	Apr-11
Power sensor E4412A	MY41498087	1-Apr-10 (No. 217-01136)	Apr-11
Reference 3 dB Attenuator	SN: S5054 (3c)	30-Mar-10 (No. 217-01159)	Mar-11
Reference 20 dB Attenuator	SN: S5086 (20b)	30-Mar-10 (No. 217-01161)	Mar-11
Reference 30 dB Attenuator	SN: S5129 (30b)	30-Mar-10 (No. 217-01160)	Mar-11
Reference Probe ES3DV2	SN: 3013	30-Dec-09 (No. ES3-3013_Dec09)	Dec-10
DAE4	SN: 660	20-Apr-10 (No. DAE4-660_Apr10)	Apr-11

Secondary Standards	ID #	Check Date (in house)	Scheduled Check
RF generator HP 8548C	US3642U01700	4-Aug-09 (in house check Oct-09)	In house check: Oct-11
Network Analyzer HP 8753E	US37390585	18-Oct-01 (in house check Oct-09)	In house check: Oct10

Calibrated by:	Name	Function	Signature
	Katja Pokovic	Technical Manager	
Approved by:	Niels Kuster	Quality Manager	

Issued: July 14, 2010

This calibration certificate shall not be reproduced except in full without written approval of the laboratory.

Calibration Laboratory of
Schmid & Partner
Engineering AG
Zeughausstrasse 43, 8004 Zurich, Switzerland



S Schweizerischer Kalibrierdienst
C Service suisse d'étalonnage
S Servizio svizzero di taratura
S Swiss Calibration Service

Accredited by the Swiss Accreditation Service (SAS)
The Swiss Accreditation Service is one of the signatories to the EA
Multilateral Agreement for the recognition of calibration certificates

Accreditation No.: SCS 108

Glossary:

TSL	tissue simulating liquid
NORM _{x,y,z}	sensitivity in free space
ConvF	sensitivity in TSL / NORM _{x,y,z}
DCP	diode compression point
CF	crest factor (1/duty_cycle) of the RF signal
A, B, C	modulation dependent linearization parameters
Polarization ϕ	ϕ rotation around probe axis
Polarization ϑ	ϑ rotation around an axis that is in the plane normal to probe axis (at measurement center), i.e., $\vartheta = 0$ is normal to probe axis

Calibration is Performed According to the Following Standards:

- IEEE Std 1528-2003, "IEEE Recommended Practice for Determining the Peak Spatial-Averaged Specific Absorption Rate (SAR) in the Human Head from Wireless Communications Devices: Measurement Techniques", December 2003
- IEC 62209-1, "Procedure to measure the Specific Absorption Rate (SAR) for hand-held devices used in close proximity to the ear (frequency range of 300 MHz to 3 GHz)", February 2005

Methods Applied and Interpretation of Parameters:

- NORM_{x,y,z}**: Assessed for E-field polarization $\vartheta = 0$ ($f \leq 900$ MHz in TEM-cell; $f > 1800$ MHz: R22 waveguide). NORM_{x,y,z} are only intermediate values, i.e., the uncertainties of NORM_{x,y,z} does not effect the E²-field uncertainty inside TSL (see below ConvF).
- NORM(f)_{x,y,z}** = NORM_{x,y,z} * frequency_response (see Frequency Response Chart). This linearization is implemented in DASY4 software versions later than 4.2. The uncertainty of the frequency response is included in the stated uncertainty of ConvF.
- DCP_{x,y,z}**: DCP are numerical linearization parameters assessed based on the data of power sweep with CW signal (no uncertainty required). DCP does not depend on frequency nor media.
- A_{x,y,z}; B_{x,y,z}; C_{x,y,z}; VR_{x,y,z}**: A, B, C are numerical linearization parameters assessed based on the data of power sweep for specific modulation signal. The parameters do not depend on frequency nor media. VR is the maximum calibration range expressed in RMS voltage across the diode.
- ConvF and Boundary Effect Parameters**: Assessed in flat phantom using E-field (or Temperature Transfer Standard for $f \leq 800$ MHz) and inside waveguide using analytical field distributions based on power measurements for $f > 800$ MHz. The same setups are used for assessment of the parameters applied for boundary compensation (alpha, depth) of which typical uncertainty values are given. These parameters are used in DASY4 software to improve probe accuracy close to the boundary. The sensitivity in TSL corresponds to NORM_{x,y,z} * ConvF whereby the uncertainty corresponds to that given for ConvF. A frequency dependent ConvF is used in DASY version 4.4 and higher which allows extending the validity from ± 50 MHz to ± 100 MHz.
- Spherical isotropy (3D deviation from isotropy)**: in a field of low gradients realized using a flat phantom exposed by a patch antenna.
- Sensor Offset**: The sensor offset corresponds to the offset of virtual measurement center from the probe tip (on probe axis). No tolerance required.

UL Japan, Inc. Head Office EMC Lab.

4383-326 Asama-cho, Ise-shi, Mie-ken 516-0021 JAPAN

Telephone : +81 596 24 8116

Facsimile : +81 596 24 8124

EX3DV4 SN:3540

July 13, 2010

Probe EX3DV4

SN:3540

Manufactured: August 23, 2005
Last calibrated: June 26, 2009
Recalibrated: July 13, 2010

Calibrated for DASY/EASY Systems

(Note: non-compatible with DASY2 system!)

UL Japan, Inc.

Head Office EMC Lab.

4383-326 Asama-cho, Ise-shi, Mie-ken 516-0021 JAPAN

Telephone : +81 596 24 8116

Facsimile : +81 596 24 8124

EX3DV4 SN:3540

July 13, 2010

DASY/EASY - Parameters of Probe: EX3DV4 SN:3540

Basic Calibration Parameters

	Sensor X	Sensor Y	Sensor Z	Unc (k=2)
Norm ($\mu\text{V}/(\text{V}/\text{m})^2$) ^A	0.45	0.50	0.59	± 10.1%
DCP (mV) ^B	94.7	92.0	86.8	

Modulation Calibration Parameters

UID	Communication System Name	PAR		A dB	B dBuV	C	VR mV	Unc ^E (k=2)
10000	CW	0.00	X	0.00	0.00	1.00	300	± 1.5%
			Y	0.00	0.00	1.00	300	
			Z	0.00	0.00	1.00	300	

The reported uncertainty of measurement is stated as the standard uncertainty of measurement multiplied by the coverage factor k=2, which for a normal distribution corresponds to a coverage probability of approximately 95%.

^A The uncertainties of NormX,Y,Z do not affect the E²-field uncertainty inside TSL (see Pages 5 and 6).

^B Numerical linearization parameter: uncertainty not required.

^E Uncertainty is determined using the maximum deviation from linear response applying rectangular distribution and is expressed for the square of the field value.

UL Japan, Inc.

Head Office EMC Lab.

4383-326 Asama-cho, Ise-shi, Mie-ken 516-0021 JAPAN

Telephone : +81 596 24 8116

Facsimile : +81 596 24 8124

EX3DV4 SN:3540

July 13, 2010

DASY/EASY - Parameters of Probe: EX3DV4 SN:3540

Calibration Parameter Determined in Head Tissue Simulating Media

f [MHz]	Validity [MHz] [Ⓒ]	Permittivity	Conductivity	ConvF X	ConvF Y	ConvF Z	Alpha	Depth Unc (k=2)
2450	± 50 / ± 100	39.2 ± 5%	1.80 ± 5%	7.81	7.81	7.81	0.27	0.85 ± 11.0%
2600	± 50 / ± 100	39.0 ± 5%	1.96 ± 5%	7.79	7.79	7.79	0.16	1.39 ± 11.0%
5200	± 50 / ± 100	36.0 ± 5%	4.66 ± 5%	4.74	4.74	4.74	0.40	1.80 ± 13.1%
5300	± 50 / ± 100	35.9 ± 5%	4.76 ± 5%	4.44	4.44	4.44	0.40	1.80 ± 13.1%
5500	± 50 / ± 100	35.6 ± 5%	4.96 ± 5%	4.45	4.45	4.45	0.45	1.80 ± 13.1%
5600	± 50 / ± 100	35.5 ± 5%	5.07 ± 5%	4.23	4.23	4.23	0.45	1.80 ± 13.1%
5800	± 50 / ± 100	35.3 ± 5%	5.27 ± 5%	4.15	4.15	4.15	0.50	1.80 ± 13.1%

[Ⓒ] The validity of ± 100 MHz only applies for DASY v4.4 and higher (see Page 2). The uncertainty is the RSS of the ConvF uncertainty at calibration frequency and the uncertainty for the indicated frequency band.

EX3DV4 SN:3540

July 13, 2010

DASY/EASY - Parameters of Probe: EX3DV4 SN:3540

Calibration Parameter Determined in Body Tissue Simulating Media

f [MHz]	Validity [MHz] ^c	Permittivity	Conductivity	ConvF X	ConvF Y	ConvF Z	Alpha	Depth Unc (k=2)
2450	± 50 / ± 100	52.7 ± 5%	1.95 ± 5%	8.05	8.05	8.05	0.29	0.91 ± 11.0%
2600	± 50 / ± 100	52.5 ± 5%	2.16 ± 5%	7.96	7.96	7.96	0.32	0.84 ± 11.0%
5200	± 50 / ± 100	49.0 ± 5%	5.30 ± 5%	4.16	4.16	4.16	0.50	1.90 ± 13.1%
5300	± 50 / ± 100	48.5 ± 5%	5.42 ± 5%	3.80	3.80	3.80	0.55	1.90 ± 13.1%
5500	± 50 / ± 100	48.6 ± 5%	5.65 ± 5%	3.70	3.70	3.70	0.55	1.90 ± 13.1%
5600	± 50 / ± 100	48.5 ± 5%	5.77 ± 5%	3.45	3.45	3.45	0.55	1.95 ± 13.1%
5800	± 50 / ± 100	48.2 ± 5%	6.00 ± 5%	3.50	3.50	3.50	0.55	1.90 ± 13.1%

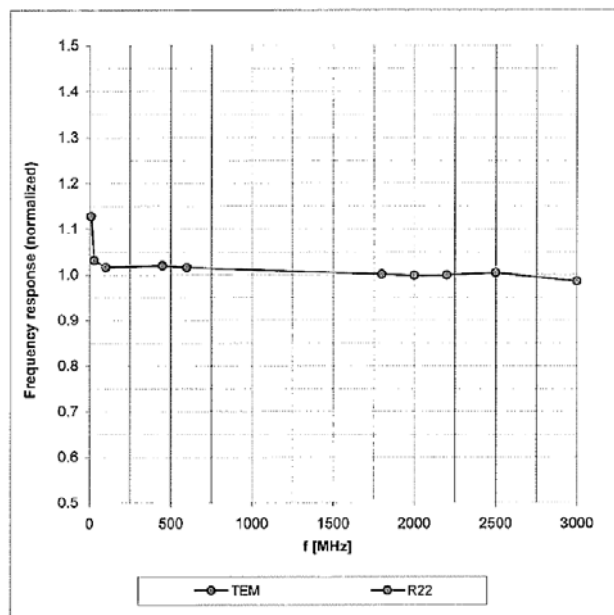
^c The validity of ± 100 MHz only applies for DASY v4.4 and higher (see Page 2). The uncertainty is the RSS of the ConvF uncertainty at calibration frequency and the uncertainty for the indicated frequency band.

EX3DV4 SN:3540

July 13, 2010

Frequency Response of E-Field

(TEM-Cell: ifi110 EXX, Waveguide: R22)



Uncertainty of Frequency Response of E-field: $\pm 6.3\%$ (k=2)

UL Japan, Inc.

Head Office EMC Lab.

4383-326 Asama-cho, Ise-shi, Mie-ken 516-0021 JAPAN

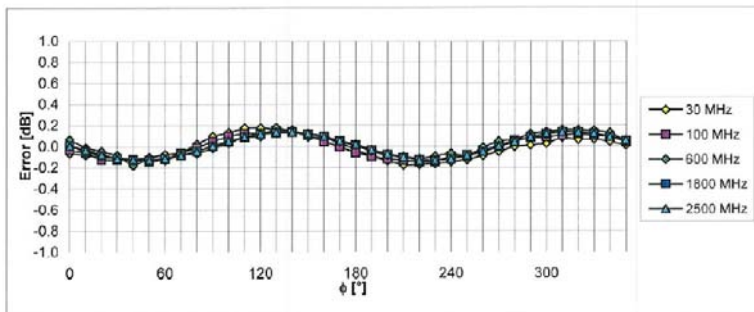
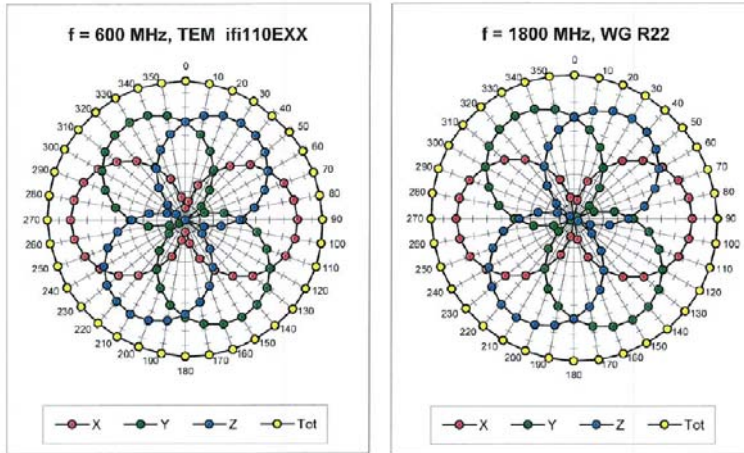
Telephone : +81 596 24 8116

Facsimile : +81 596 24 8124

EX3DV4 SN:3540

July 13, 2010

Receiving Pattern (ϕ), $\theta = 0^\circ$

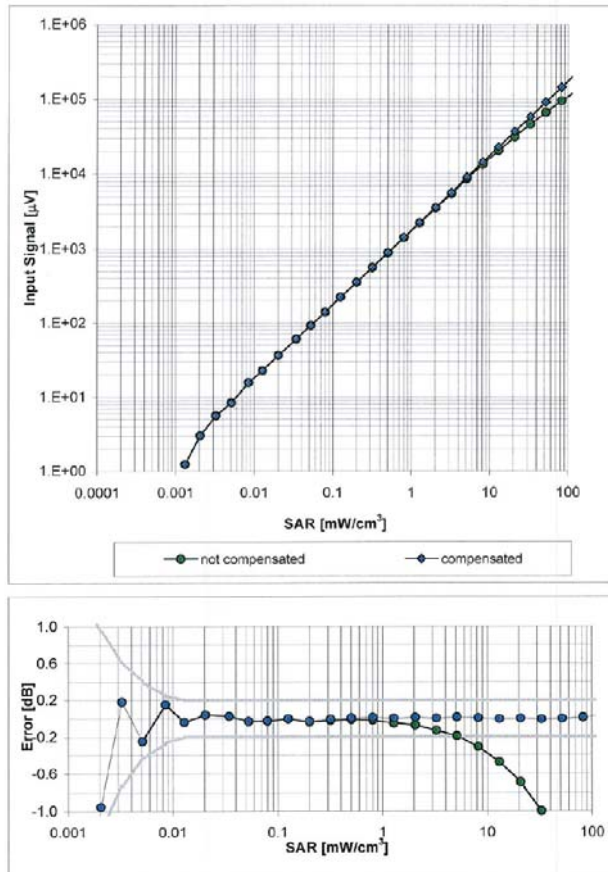


Uncertainty of Axial Isotropy Assessment: $\pm 0.5\%$ ($k=2$)

EX3DV4 SN:3540

July 13, 2010

Dynamic Range $f(\text{SAR}_{\text{head}})$ (Waveguide R22, $f = 1800 \text{ MHz}$)

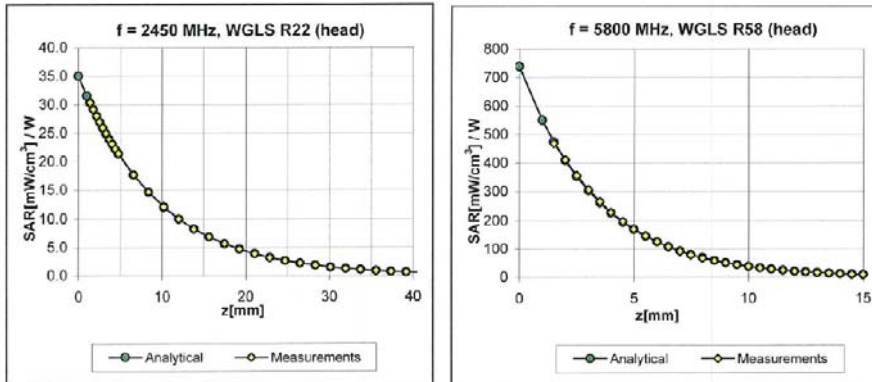


Uncertainty of Linearity Assessment: $\pm 0.6\%$ ($k=2$)

EX3DV4 SN:3540

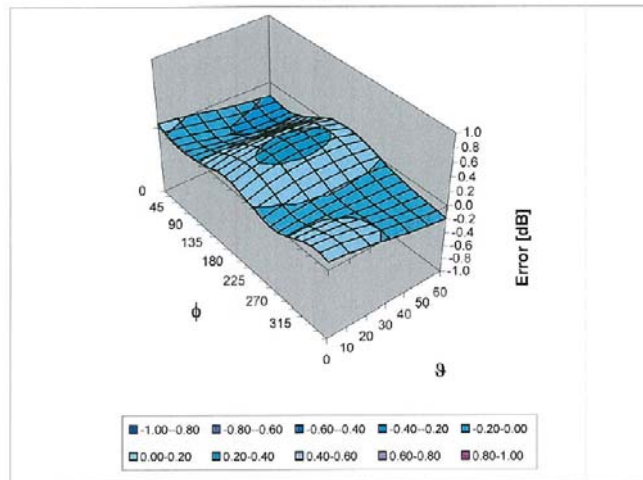
July 13, 2010

Conversion Factor Assessment



Deviation from Isotropy in HSL

Error (ϕ, θ), f = 900 MHz



Uncertainty of Spherical Isotropy Assessment: $\pm 2.6\%$ (k=2)

EX3DV4 SN:3540

July 13, 2010

Other Probe Parameters

Sensor Arrangement	Triangular
Connector Angle (°)	Not applicable
Mechanical Surface Detection Mode	enabled
Optical Surface Detection Mode	disabled
Probe Overall Length	337 mm
Probe Body Diameter	10 mm
Tip Length	9 mm
Tip Diameter	2.5 mm
Probe Tip to Sensor X Calibration Point	1 mm
Probe Tip to Sensor Y Calibration Point	1 mm
Probe Tip to Sensor Z Calibration Point	1 mm
Recommended Measurement Distance from Surface	2 mm

13. References

- [1]ANSI, ANSI/IEEE C95.1-1992: IEEE Standard for Safety Levels with Respect to Human Exposure to Radio Frequency Electromagnetic Fields, 3 kHz to 300 GHz, The Institute of Electrical and Electronics Engineers, Inc., New York, NY 10017, 1992.
- [2] Katja Pokovic, Thomas Schmid, and Niels Kuster, "Robust setup for precise calibration of E-field probes in tissue simulating liquids at mobile communications frequencies", in ICECOM '97, Dubrovnik, October 15-17, 1997, pp. 120-124.
- [3] Katja Pokovic, Thomas Schmid, and Niels Kuster, "E- field probe with improved isotropy in brain simulating liquids", in Proceedings of the ELMAR, Zadar, Croatia, 23-25 June, 1996, pp.172-175.
- [4] W. Gander, Computermathematik, Birkhaeuser, Basel, 1992.
- [5] W. H. Press, S. A. Teukolsky, W. T. Vetterling, and B. P. Flannery, Numerical Recipes in C, The Art of Scientific Computing, Second Edition, Cambridge University Press, 1992.
- [6]SPEAG uncertainty document for DASY 4 System from SPEAG (Shimid & Partner Engineering AG).
- [7]SPEAG uncertainty document for "the 5-6GHz Extension" from SPEAG (Shimid & Partner Engineering AG).

UL Japan, Inc.

Head Office EMC Lab.

4383-326 Asama-cho, Ise-shi, Mie-ken 516-0021 JAPAN

Telephone : +81 596 24 8116

Facsimile : +81 596 24 8124