

Changing the Step Zooming Setting (STEP ZOOM)

Step zooming is the setting of the focal length with optical zooming, which can be fixed to any of four levels (28, 35, 50, 85 mm, equivalent to that on a 35mm camera).

Available Settings

ON (Use step zooming)

OFF (Do not use step zooming) *Default setting

To set step zooming, follow the steps below.

- 1** Display the **SETUP** menu.
 - For the operating procedure, see P.107.
- 2** Press the **▼** button to select **[STEP ZOOM]** and press the **▶** button.
- 3** Press the **▲▼** buttons to select the desired setting.
- 4** Press the **MENU/OK** button, or **◀** button and press the **MENU/OK** button.



Displaying a Settings Change Warning (SHTG STGS WARNG.)

If the initial settings are changed for the following functions, you can set the camera to have the icon of that function blink and to display a warning message about the function with the changed setting for a few seconds when the camera is turned on.

White balance, Focus, ISO setting, Exposure compensation, Time exposure

If you operate a camera button while an icon is blinking, the icon stops blinking and lights steadily. If you operate a camera button while the warning message is displayed, the message disappears.

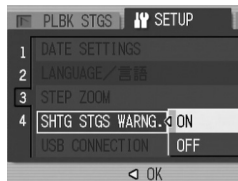
Available Settings

ON (Enable warnings) *Default setting

OFF (Disable warnings)

To set change warning, follow the steps below.

- 1** Display the **SETUP** menu.
 - For the operating procedure, see P.107.
- 2** Press the **▼** button to select [SHTG STGS WARNG.] and press the **▶** button.
- 3** Press the **▲▼** buttons to select the desired setting.
- 4** Press the **MENU/OK** button, or **◀** button and press the **MENU/OK** button.



6

Changing Camera Settings

Changing the USB Setting (USB CONNECTION)

By setting [USB CONNECTION] to [MASS STR] on the SETUP menu, you can view files in the camera and transfer files from the camera to your computer using the USB cable without installing the supplied software or USB driver.

Usually, set [USB CONNECTION] to [ORIGINAL]. You can transfer images to your computer using the supplied RICOH Gate La software.

| USB CONNECTION Mode | MASS STR | ORIGINAL |
|--|---|--|
| Downloading data | The SD memory card or internal memory of the camera can be operated directly as an external drive for file processing. | RICOH Gate La allows automatic transfer of camera data to your computer. Use the Caplio Mounter to transfer camera data to your computer. (Mac OS) |
| Installation from Caplio Software CD-ROM | Not required | Required |
| Supported Operating Systems | | |
| Windows 98/98SE | × | ○ |
| Windows 2000 Professional | ○ | ○ |
| Windows Me | ○ | ○ |
| Windows XP Home Edition | ○ | ○ |
| Windows XP Professional | ○ | ○ |
| Mac OS 8.6 | × | ○ |
| Mac OS 9.0 to 9.2.2 | ○ | ○ |
| Mac OS X 10.1.2 to 10.4.6 | ○ | ○ |
| For those: | <ul style="list-style-type: none"> Familiar with OS file operations Not willing to install a USB driver or other programs | <ul style="list-style-type: none"> Willing to automate downloading to a computer Using Windows 98/98SE Using Mac OS 8.6 |

Caution

- When [USB CONNECTION] is set to [MASS STR], you cannot use RICOH Gate La to transfer camera data.
- When [USB CONNECTION] is set to [MASS STR], files can only be read from the camera and cannot be written to or deleted from the camera.
- When [USB CONNECTION] is set to [MASS STR], Direct Print may not be available for some printers. In such cases, select [ORIGINAL] instead.

To change the USB setting, follow the steps below.

1 Display the SETUP menu.

- For the operating procedure, see P.107.

2 Press the ▼ button to select [USB CONNECTION] and press the ► button.**3 Press the ▲▼ buttons to select the desired setting.****4 Press the MENU/OK button, or ◀ button and press the MENU/OK button.****6****Changing Camera Settings****Note**

For how to download images from the camera to a computer using the USB cable, see P.149-153.

Enlarging Icon Display (ENLGE PHOTO ICON)

You can enlarge the icons displayed on the screen during shooting. The following icons are enlarged:

Flash, Macro Shooting, Self-timer, White balance, Focus, Exposure compensation, ISO setting

When the icons are enlarged, the following items are not displayed:
Zoom bar/Focus bar, Date imprint, Sharpness, Color depth
To enlarge the icons on the screen, follow the steps below.

1 Display the **SETUP** menu.

- For the operating procedure, see P.107.

2 Press the **▼** button to select [ENLGE PHOTO ICON] and press the **▶** button.

3 Press the **▲▼** buttons to select the desired setting.

4 Press the **MENU/OK** button, or **◀** button and press the **MENU/OK** button.



6

Changing Camera Settings

Registering the Power-on Settings (REG. MY SETTINGS)

The My Setting function allows you to make your desired settings to be used at power-on. For example, when a digital camera is used in common by multiple persons, you can use the camera without regard to the settings made by the person who used the camera previously because the camera settings are restored to your settings each time the camera is turned on.

Two types of My Settings can be registered.

To register the current camera settings as My Settings, follow the steps below.

1 Change the camera settings to the settings to be registered as My Settings.

2 Display the **SETUP** menu.

- For the operating procedure, see P.107.

3 Press the **▼** button to select **[REG. MY SETTINGS]** and press the **▶** button.

- A confirmation message appears.



4 Select **[SETTING1]** or **[SETTING2]** and press the **MENU/OK** button.

- The current camera settings will be registered and the display returns to the **SETUP** menu.
- If you do not want to register them, press the **DISP.** button.



5 Press the **MENU/OK** button.

6

Changing Camera Settings

Changing the Startup Settings (START SETTINGS)

You can use the settings registered in [REG. MY SETTINGS] for the startup settings.

1 Display the SETUP menu.

- For the operating procedure, see P.107.

2 Press the ▼ button to select [START SETTINGS] and press the ► button.

3 Select [SETTING1] or [SETTING2] and press the MENU/OK button, or ◀ button and press the MENU/OK button.



- If you do not use the my setting function, select [OFF].

4 Turn your camera off.

- The settings to be used at the next power-on will be changed.

Note

- When [START SETTINGS] is set to [OFF], settings are retained as usual.
- When [START SETTINGS] is set to [SETTING1] or [SETTING2], the camera settings made with [REG. MY SETTINGS] are used at power-on even if [RESTORE DEFAULTS] is selected.

Settings Saved by My Setting Function

| | |
|-------------------------------|------------------|
| PIC QUALITY/SIZE | DATE IMPRINT |
| ANTIBLUR | WHITE BALANCE |
| FOCUS | ISO SETTING |
| Focal distance used in Manual | Zoom position |
| PHOTOMETRY | Macro |
| SHARPNESS | Flash |
| CONT. MODE | Scene Mode |
| COLOR DEPTH | DISP. Mode |
| EXPOSURE COMP. | DENSITY |
| TIME EXPOSURE | FRAME RATE |
| IMAGE WITH SOUND | ENLGE PHOTO ICON |

7 Downloading Images to Your Computer

The screen images shown here may differ from the images displayed on your computer depending on your computer OS.

For Windows

Refer to P.142 for Macintosh.

You need to install software for transferring images to your computer before you can download images from the camera. Software installation is necessary for automatic image downloading from the camera to your computer.

Caution

Be sure to install the software before you connect the camera to your computer. (☞ P.134)

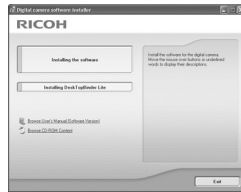


Note

- When [MASS STR] is selected for [USB CONNECTION] of the camera's SETUP menu, you can view the files in the camera without installing the supplied software or USB driver (☞ P.151). At the time of purchase, [ORIGINAL] is selected.
- For how to download images from the camera to your computer, see the "Software User Guide" available from the Caplio Software CD-ROM. For how to display the "Software User Guide", see P.131.

Using the Caplio Software CD-ROM

Once you insert the Caplio Software CD-ROM in the CD-ROM drive, the installer screen appears automatically.



| Item Name | Description | Refer to |
|---|--|----------|
| Installing the Software | Use this button to install software required for handling the camera and images. | P.134 |
| Installing DeskTopBinder Lite | Use this button to install software required for handling the camera and images. | P.136 |
| Browse User's Manual (Software Version) | Click this to display the "Software User Guide" (PDF). | P.131 |
| Browse CD-ROM Content | Click this to display the list of files contained on the CD-ROM. | P.132 |

When [Installing the software] is clicked: (P.134)

The following software will be installed:

| Software | Windows | | Description | |
|-----------------|-----------------------|-----------------------|---|--|
| | XP | 98 | | |
| Caplio Software | RICOH Gate La | <input type="radio"/> | <input type="radio"/> | Downloads images collectively. |
| | List Editor | <input type="radio"/> | <input type="radio"/> | Used to create a camera memo list. |
| | Caplio Setting* | <input type="radio"/> | <input type="radio"/> | Used to make wireless LAN-related settings. |
| | Caplio Server* | <input type="radio"/> | <input type="radio"/> | Used to set your computer as a Caplio-only FTP server. |
| ImageMixer | <input type="radio"/> | <input type="radio"/> | Shot images can be displayed or edited and video CDs can be created. DirectX (P.139) is necessary for handling movies. | |
| USB Driver | <input type="radio"/> | <input type="radio"/> | Used to connect the camera to the computer. | |
| WIA Driver | <input type="radio"/> | - | Used to download images. | |

XP: Windows XP

98: Windows 98/98SE/Me/2000

* Only for Caplio 500SE-W

**Note**

- The camera is provided with ImageMixer software that allows you to display and edit images from your computer. For how to use ImageMixer, click the [?] button on the ImageMixer window and see the displayed manual. For the latest information about ImageMixer, access the Web page of Pixela Co., Ltd. (<http://www.imagemixer.com>).
- The WinASPI installer starts during installation of ImageMixer. WinASPI is required when creating a Video CD using ImageMixer.

When [Installing DeskTopBinder Lite] is clicked: (P.136)

The following software will be installed:

| Software | Windows | | Description |
|--------------------|-----------------------|-----------------------|--|
| | XP | 98 | |
| DeskTopBinder Lite | <input type="radio"/> | <input type="radio"/> | Software used to manage business documents. Images in the camera can be downloaded to DeskTopBinder Lite using the Auto Document Link that monitors document updating. |
| USB Driver | <input type="radio"/> | <input type="radio"/> | Used to connect the camera to the computer. |
| WIA Driver | <input type="radio"/> | - | Used to download images. |

XP: Windows XP

98: Windows 98/98SE/Me/2000



Caution

DeskTopBinder Lite is compatible with Windows 98SE but not Windows 98.



Note

- For details about the DeskTopBinder Lite, refer to the Introduction Guide (PDF file), Setup Guide (PDF file), Auto Document Link Guide (PDF file), and Help supplied with the DeskTopBinder Lite.
- For details about the Auto Document Link, refer to the Auto Document Link Guide (PDF file).

When [Browse User's Manual (Software Version)] is clicked:

The "Software User Guide" (PDF file) on the Caplio Software CD-ROM is displayed on your computer screen.

If you have Acrobat Reader installed on your computer, simply click [Browse User's Manual (Software Version)]. Acrobat Reader must be installed to view the PDF file. (P.138)

When [Browse CD-ROM Content] is clicked:

You can check folders and files on the CD-ROM. The CD-ROM contains not only the software installed by clicking [Installing the software] but also the following software. These software products run on Windows.

For the installation of each software product, see the reference page in the table below.

| Software | Description | Refer to |
|----------------|---|----------|
| Acrobat Reader | Required for viewing the "Software User Guide". | P.138 |
| DirectX | Required for playing movies by the ImageMixer. | P.139 |

**Note**

- For details about Acrobat Reader, see Help for Acrobat Reader.
- To install ImageMixer alone, double-click "setup.exe" in the ImageMixer folder.

System Requirements for Using Caplio Software CD-ROM

The following environments are necessary for using Caplio Software. Please check your computer, or the computer's user manual.

| | |
|--|---|
| Operating Systems Supported | Windows 98/98 Second Edition Windows 2000 Professional Windows Me Windows XP Home Edition/Professional |
| CPU | Pentium III: 500 MHz or faster |
| Memory | Windows 98/98SE: 128 MB or more Windows 2000: 128 MB or more Windows Me: 128 MB or more Windows XP: 256 MB or more |
| Hard drive space required for installation | Windows 98/98SE: 500 MB or more Windows 2000: 500 MB or more Windows Me: 500 MB or more Windows XP: 500 MB or more |
| Display Resolution | 800 × 600 pixels or greater |
| Display Colors | 65,000 colors or greater |
| CD-ROM Drive | A CD-ROM drive compatible with the above-mentioned computer |
| USB Port | A USB port compatible with the above-mentioned computer |



Caution

- If your computer has an upgraded OS, the USB function may not work normally, so it cannot be supported.
- The provided software may not operate properly if changes are made to the operating system, such as with patches and service package releases.
- The camera does not support connection to a USB port added by using an extension function (PCI bus or other).
- If used in conjunction with a hub or other USB devices, the software may not work properly.
- When dealing with movies and other large files, a larger memory environment is recommended.

Installing the Software Required for Handling the Camera and Images on Your Computer

Install the required software on your computer from the CD-ROM before connecting the camera.

Caution

- Do not install the software when the camera is connected to your computer with a USB cable.
- If you happened to connect your camera to the computer (resulting in the [Add New Hardware Wizard] screen appearing on your computer screen), simply click [Cancel], and after disconnecting your camera, install the software on your computer.
- If software is already installed from a Caplio Software CD-ROM from a previous model, a message stating that the old software must be uninstalled before installing the new one is displayed.
Follow the message instructions and uninstall the old software before installing the new software. Functions of the old model can still be used as before.
If DU-10 is installed, it will be replaced by Caplio Viewer (an upgraded version of DU-10). If the old software is uninstalled before the message is displayed, Caplio Viewer is not installed even if the new software is installed. (For how to uninstall the software, see P.140.)
- For Windows XP or Windows 2000, administrator privileges are required to install the software.

Here is an example of the Windows XP screen.

1 Start your computer and insert the Caplio Software CD-ROM in the CD-ROM drive.

- The installer screen appears automatically.

2 Click [Installing the software].

- After a while, the [Choose Setup Language] screen appears.

3 Confirm the language, and then click [OK].

- The [Welcome to the InstallShield Wizard for Caplio Software] screen appears.



4 Click [Next].

- The [Choose Destination Location] screen appears.

5 Confirm where you want to install and then click [Next].

- The [Select Program Folder] screen appears.

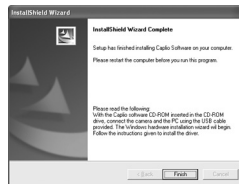
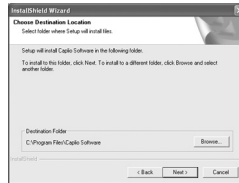
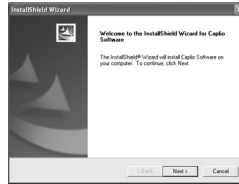
6 Confirm the [Select Program Folder] and then click [Next].

- The ImageMixer installer starts. Install ImageMixer following the messages displayed on the screen.

- When installation of ImageMixer is completed, a dialog box appears, indicating that all software applications have been installed.

7 Click [Finish].**8 Restart your computer.****Note**

You can remove (uninstall) the software. (P.140)



Installing the DeskTopBinder Lite

DeskTopBinder Lite is used for managing business documents. As well as still images captured with a digital camera, you can manage a variety of documents, including documents input by scanner, documents created with various applications and image files. You can also store files with different formats in a single document. Images downloaded from the camera can be saved to DeskTopBinder Lite using the Auto Document Link for monitoring document updating.



Note

For how to use DeskTopBinder Lite, refer to the Introduction Guide, the Setup Guide, and the DeskTopBinder Lite - Auto Document Link Guide (all PDF files) that are installed with DeskTopBinder Lite.



Caution

- If you happened to connect your camera to the computer (resulting in the [Add New Hardware Wizard] screen appearing on your computer screen), simply click [Cancel], and after disconnecting your camera, install the software on your computer.
- For Windows XP or Windows 2000, administrator privileges are required to install the software.
- To download images from the camera using the Auto Document Link of DeskTopBinder Lite, install the Caplio Software before installing DeskTopBinder Lite. (☞ P.134) The driver included in the Caplio Software is required to use the Auto Document Link.
- If [Caplio Digital Camera] is set as the monitoring destination of the Auto Document Link, select [ORIGINAL] for [USB CONNECTION] on the camera menu. (☞ P.123)

Here is an example of the Windows XP screen.

1 Start your computer and insert the Caplio Software CD-ROM in the CD-ROM drive.

- The installer screen appears automatically.



2 Click [Installing DeskTopBinder Lite].

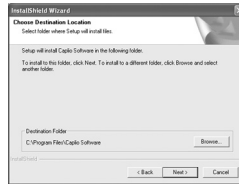
- After a few moments, the [Welcome to the InstallShield Wizard for Caplio Software S] screen appears.

3 Click [Next].

- After a few moments, the [Choose Destination Location] screen appears.

4 Confirm where you want to install and then click [Next].

- The [Select Program Folder] screen appears.

**5 Confirm the [Select Program Folder] and then click [Next].****6 Click [OK].****7 Click [DeskTopBinder Lite].**

- The DeskTopBinder Lite installer starts.
- Install DeskTopBinder Lite following the messages displayed on the screen.
- When the screen where you verify digital ID is displayed, click [OK].

Caution

- DeskTopBinder Lite cannot coexist with a different version of DeskTopBinder Lite, DeskTopBinder Professional, or Job Binding. Before installing DeskTopBinder Lite, uninstall these applications. The data used in the previous application can be saved and inherited by DeskTopBinder Lite. However, when the previous application is DeskTopBinder Professional, some functions will no longer be available.
- When capturing images from the camera using the Auto Document Link of the DeskTopBinder Lite, deselect the [Saves automatically when connected to USB] check box in the [Option settings] dialog box displayed by selecting [Option settings] on the [RICOH Gate La Settings] menu. (Refer to the "Software User Guide".) Before capturing images from the camera, set the date and time using the [DATE SETTINGS] option of the camera. (P.119)
- If you turned the camera off and then on again while connected to the computer with DeskTopBinder Lite open, reboot the computer with the camera connected.

Installing Other Software on Your Computer

Caution

- Do not install the software when the camera is connected to your computer with a USB cable.
- For Windows XP or Windows 2000, administrator privileges are required to install the software.

Acrobat Reader

Acrobat Reader is required to display the operation manual (PDF file).

If the computer is running under Windows, Acrobat Reader can be installed. Acrobat Reader need not be installed if already installed on your computer.

1 Start your computer, and insert the included Caplio Software CD-ROM into the CD-ROM drive.

- The installer screen appears automatically.

2 Click [Browse CD-ROM Content].

- The files on the CD-ROM are listed.



3 Double-click the [Acrobat] folder.

4 Double-click the [English] folder.

5 Double-click [ar500enu] (ar500enu.exe).

6 Install Acrobat Reader by following the messages displayed.

DirectX

DirectX is used to play movie files with ImageMixer.

This camera requires DirectX 8.1 or later to play movie files in Windows. If you have an earlier version installed, please install the updated version available on the accompanying CD-ROM. For Windows XP, installation of DirectX is not needed because the updated version is already installed.

- 1** Start your computer, and insert the included Caplio Software CD-ROM into the CD-ROM drive.
- 2** Click [Browse CD-ROM Content].
- 3** Double-click the [DirectX] folder.
- 4** Double-click the [English] folder.
- 5** Double-click the following file:

| | |
|--------------------|---|
| Windows 98/98SE/Me | [DX81xxx.exe] in the [Win98Me] folder |
| Windows 2000 | [DX81NTxxx.exe] in the [Win2000] folder |

Uninstalling the Software

Caution

- For Windows 2000/XP, administrator privileges are required to uninstall the software.
- If any other program is active or unsaved data remains, save the data and terminate the program before uninstalling.
- If you install both ImageMixer and the DeskTopBinder Lite and then uninstall either one, camera connection to the computer may fail. In this case, uninstall both [Caplio Software] and [Caplio Software S] and then install only the required one.

Caplio Software

- 1** Click [Start] on the Windows task bar.
- 2** Select [Settings]-[Control Panel] ([Control Panel] for XP).
- 3** Double-click the [Add/Remove Programs] icon (or the [Add or Remove Programs] icon in Windows XP).
- 4** Select [Caplio Software] (select [Caplio Software S] if you have installed the DeskTopBinder Lite), and then click the [Change/Remove] button.
- 5** Confirm file deletion and click [OK].
 - The [Shared File Detected] dialog box appears.
- 6** Select the [Don't display this message again.] check box, and then click [Yes].
 - The uninstallation process begins. When it is finished, close the displayed window.

ImageMixer

- 1** Click [Start] on the Windows task bar.
- 2** Select [Settings]-[Control Panel] ([Control Panel] for XP).
- 3** Double-click the [Add/Remove Programs] icon (or the [Add or Remove Programs] icon in Windows XP).
- 4** Select [ImageMixer] and then click [Change/Remove].
- 5** Confirm file deletion and click [OK].
 - The uninstallation process begins. When it is finished, close the displayed window.
- 6** Restart your computer.

For Macintosh

Refer to P.128 for Windows.

You need to install software for transferring images to your computer before you can download images from the camera. Software installation is necessary for automatic image downloading from the camera to your computer.



Caution

Be sure to install the software before you connect the camera to your computer with the cable.



Note

For how to download images from the camera into your computer, see the "Software User Guide" available from the Caplio Software CD-ROM. For how to display the "Software User Guide", see P.143.

Using the Caplio Software CD-ROM

| Software | Mac | | Description |
|----------------|-----------------------|-----------------------|---------------------------------------|
| | 9 | X | |
| RICOH Gate La | <input type="radio"/> | - | Downloads images collectively. |
| USB Driver | <input type="radio"/> | <input type="radio"/> | Connects the camera to your computer. |
| Caplio Mounter | <input type="radio"/> | <input type="radio"/> | Connects the camera to your computer. |

9: Mac OS 8.6 to 9.2.2

X: Mac OS X 10.1.2 to 10.4.6



Note

- For Mac OS 8.6 to 9.2.2, when the camera and computer are connected, RICOH Gate La automatically starts and the downloading of images begins. For details about the software, see the "Software User Guide".
- For how to download images using Caplio Mounter, see the "Software User Guide".

For Mac OS 8.6 to 9.2.2, double-clicking the [Installer] icon displays the [Digital camera software installer] window.



Note

The "Digital camera software installer" window is not displayed in Mac OS X 10.1.2 to 10.4.6. (☞ P.146)

| Item Name | Description |
|---|--|
| Installing the Software | Use this button to install software required for handling the camera and images. |
| Browse User's Manual (Software Version) | Use this button to display the "Software User Guide" (PDF). |

When [Installing the software] is clicked (☞ P.145, P.146):

The software will be installed.

When [Browse User's Manual (Software Version)] is clicked:

The "Software User Guide" (PDF file) on the Caplio Software CD-ROM can be displayed on your computer screen. Acrobat Reader must be installed to view the PDF file.

System Requirements for Using the Caplio Software CD-ROM

The following environments are necessary for using the Caplio Software.

Please check your computer, or the computer's user manual.

| | | |
|--|---|--|
| Operating System | Mac OS 8.6 to 9.2.2/Mac OS X 10.1.2 to 10.4.6 | |
| Macintosh | A USB port standard-equipped Apple Macintosh Series | |
| Internal Memory | Mac OS 8.6 to 9.2.2 | 96 MB or more (128 MB or more recommended) |
| | Mac OS X 10.1.2 to 10.4.6 | 128 MB or more (256 MB or more recommended) |
| Application Allocated Memory (For Mac OS 8.6 to 9.2.2) | Without using the compression utility, 16 MB or more (24 MB or more is recommended) as Application Memory | |
| Hard Disc Drive Capacity | Mac OS 8.6 to 9.2.2 | 10 MB or more (at installation) |
| | Mac OS X 10.1.2 to 10.4.6 | 100 MB or more (at installation) |
| | | 100 MB or more (at operation) |
| Display Resolution | 800 × 600 pixels or greater | |
| Display Colors | 32,000 colors or greater | |
| CD-ROM Drive | A CD-ROM drive compatible with the above-mentioned Macintosh machine | |
| USB Port | A USB port compatible with the above-mentioned computer body | |

Downloading Images to Your Computer

7



Caution

- The provided software may not operate properly if changes are made to the operating system.
- Connection to a USB port retrofitted using an extended function (PCI bus, etc.) cannot be supported.
- If used in conjunction with a hub or other USB devices, the software may not work properly.



Note


- When dealing with movies and other large files, a larger memory environment is recommended.
- For Mac OS 8.6 to 9.2.2, use a larger memory environment, as well as allocating extra application memory.

Installing the Software Required for Handling the Camera and Images on Your Computer (Mac OS 8.6 to 9.2.2)

Install the required software on your computer from the CD-ROM before connecting the camera.

Caution-----

Do not install the software when the camera is connected to your computer with a USB cable.

- 1** Turn on your Macintosh and insert the Caplio Software CD-ROM in the CD-ROM drive.
 - 2** Double-click the [Caplio Software] icon.
 - 3** Double-click the [MacOS9] folder.
 - The [Installer] icon appears.
 - 4** Double-click [Installer].
 - The [Digital camera software installer] window opens.
- 
- 5** Click [Installing the software].
 - 6** Click [OK] to update.
 - 7** Click [Install].
 - When installation finishes, a message appears to inform you that it is necessary to restart your Macintosh.
 - 8** Click [Continue].
 - The software is installed and after a while the Installation Complete message appears.
 - 9** Click [Restart].
 - Your Macintosh restarts.



Installing the Software Required for Handling the Camera and Images on Your Computer (Mac OS X 10.1.2 to 10.4.6)

Install the required software on your computer from the CD-ROM before connecting the camera.



Caution

Do not install the software when the camera is connected to your computer with a USB cable.

Downloading Images to Your Computer

7

1 Turn on your Macintosh and insert the Caplio Software CD-ROM in the CD-ROM drive.

2 Double-click the [Caplio Software] icon.

3 Open the [Mac OS X] folder.

- Folders named [Mac OS X 10.1 - 10.3] and [Mac OS X 10.4] appear.

4 Click the folder for your OS.

- Double click [Mac OS X 10.1 - 10.3] if you are using Mac OS X 10.3 or earlier. Double click [Mac OS X 10.4] if you are using Mac OS X 10.4 or later. The [Caplio Mounter] icon appears.

5 Double-click [Caplio Mounter].

- The [Install Caplio Mounter] screen appears.
- The [Caplio Mounter] in the [Mac OS X 10.4] folder cannot be installed in Mac OS X 10.1 to 10.3.



Caplio Mounter

6 Click [Continue].

- The installation Readme file appears. Click [Continue].

7 Click [Continue].

- The screen to select the destination disk appears.

- 8** Click the destination disk you want, and then click [Continue].



- 9** Click [Install].

- Click [Upgrade] to update the software.
- A screen appears prompting you to enter the administrator's password.

- 10** Enter the administrator's name and password, and then click [OK].

- A message appears to inform you that it is necessary to restart your Macintosh when installation finishes.

- 11** Click [Continue Installation].

- The software is installed, and after a while an Installation Complete message appears.

- 12** Click [Restart].

- Your Macintosh restarts.

Uninstalling the Software



Caution

If any other program is active or unsaved data remains, save the data and terminate the program before uninstalling.

Mac OS 8.6 to 9.2.2

- 1 Delete the following files in the System Folder from your Macintosh.

| File Name | Folder Name |
|----------------------|----------------|
| RICOH Gate La | Control Panels |
| RICOH Gate La Prefs | Preferences |
| Caplio Mounter | Extensions |
| Caplio Mounter Prefs | Preferences |
| Caplio USB Driver | Extensions |
| Caplio LIB | Extensions |

Mac OS X 10.1.2 to 10.4.6

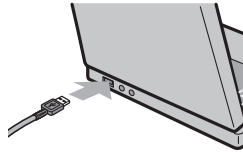
- 1 Start [Caplio Mounter] in [Applications] folder.
- 2 Select [Uninstall] in [File] menu.
 - The uninstallation process begins.

Connecting the Camera to Your Computer

After installing the software on your computer, connect your camera to the computer.

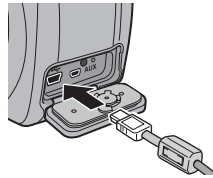
The following explanation is provided assuming that [ORIGINAL] (default) is selected at [USB CONNECTION] of the camera's SETUP menu. (☞ P.123) If [MASS STR] is selected, change it to [ORIGINAL]. You can also download images in mass storage mode (☞ P.151).

- 1** Make sure the camera power is off.
- 2** Connect the USB cable to the USB port of your computer.



- 3** Connect the USB cable to the USB terminal of your camera.

- Your camera turns on.
- In Windows the first time you connect your camera to the computer using a USB cable, the [Found New Hardware Wizard] screen will appear. (☞ P.150)
- When using Macintosh or when connecting the camera to a Windows computer that you have connected the camera to already, RICOH Gate La starts and image transfer begins automatically.



Caution-----

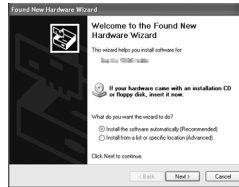
Before opening or closing the battery/card cover or terminal cover, be sure to remove any water, sand or mud adhering to the camera, and avoid opening and closing the cover in places where such contaminants may get inside the camera.

Using the Caplio Software to Download Images

In Windows the first time you connect your camera to the computer using a USB cable, the [Found New Hardware Wizard] screen will appear. (Does not appear on Macintosh.)

Here is an example of the Windows XP screen.

1 Select [Install the software automatically (Recommended)].

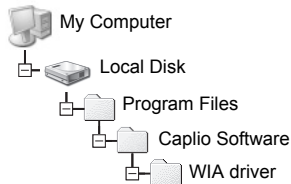


2 Insert the Caplio Software CD-ROM into the CD-ROM drive on your computer.

- Installation of the WIA driver automatically starts. If the CD-ROM is already on your computer when the [Found New Hardware Wizard] screen is displayed, simply click [Next] to start installation.

Note

By default, the WIA driver is installed in the following location:
Specify the folder if the CD-ROM is not available.



3 Select [RICOH Gate La], check [Always use this program for this action] check box, and then click [OK].

