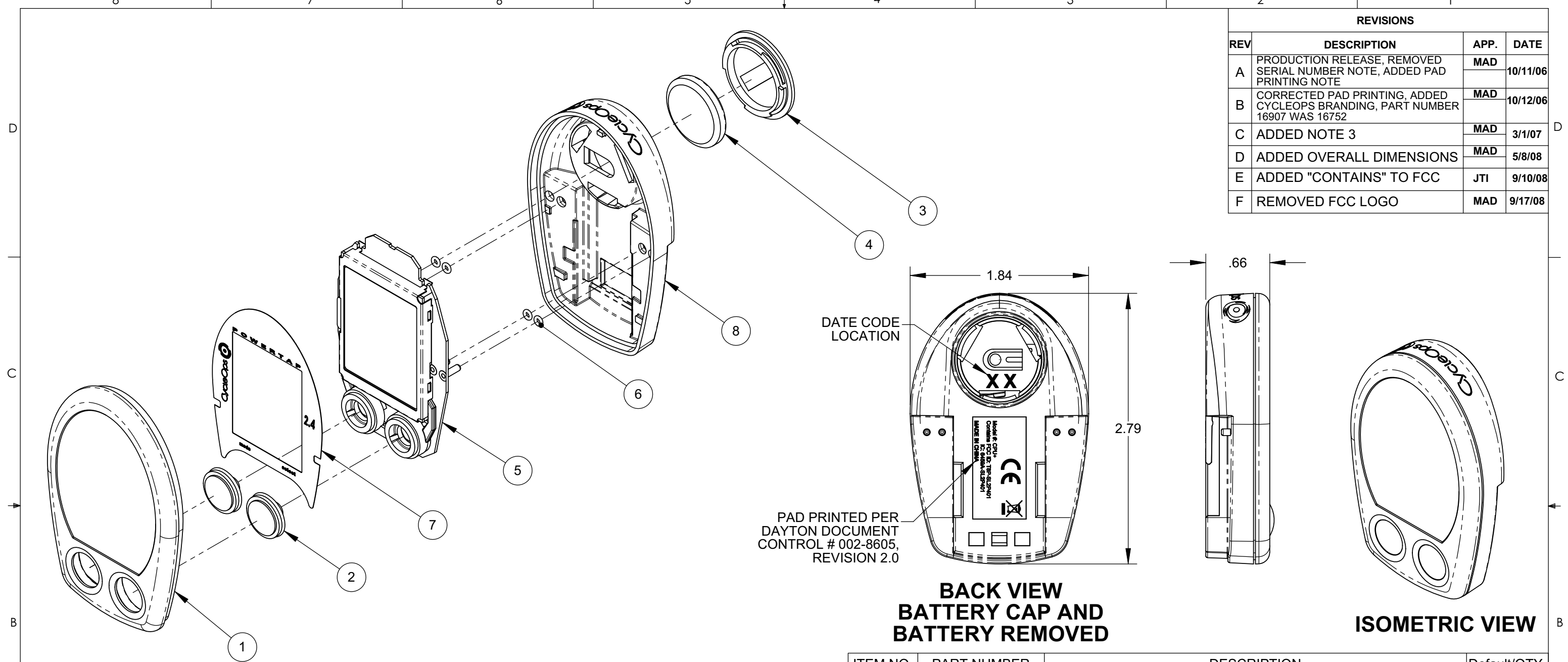


REVISIONS			
REV	DESCRIPTION	APP.	DATE
A	PRODUCTION RELEASE, REMOVED SERIAL NUMBER NOTE, ADDED PAD PRINTING NOTE	MAD	10/11/06
B	CORRECTED PAD PRINTING, ADDED CYCLOPS BRANDING, PART NUMBER 16907 WAS 16752	MAD	10/12/06
C	ADDED NOTE 3	MAD	3/1/07
D	ADDED OVERALL DIMENSIONS	MAD	5/8/08
E	ADDED "CONTAINS" TO FCC	JTI	9/10/08
F	REMOVED FCC LOGO	MAD	9/17/08



**BACK VIEW  
BATTERY CAP AND  
BATTERY REMOVED**

**ISOMETRIC VIEW**

ITEM NO.	PART NUMBER	DESCRIPTION	Default/QTY.
1	14113	HOUSING,CPU, TOP	1
2	15446	BUTTON, RUBBER, PT ACTUATOR	2
3	13999	COVER,BATTERY,W/ORING,PLASTIC	1
4	13998	BATTERY,CPU,CR2032,LITHIUM,3V	1
5	16909	CPU, LCD/ANT ASSEMBLY, 2.4 SL	1
6	15593	SHOE CONTACT SEAL, PT CPU	4
7	16751	MASK,PT SL CPU,YELLOW	1
8	16907	HOUSING, CPU, BOTTOM, YLW	1

- NOTE:**
- UNIT TO BE ASSEMBLED PER SARIS WORK INSTRUCTION 16913-WI.DOC.
  - ELECTRICAL PERFORMANCE TO MEET SARIS SPECIFICATION 16914-WI.DOC.
  - MUST BE SHIPPED IN INDIVIDUAL ANTI-STATIC PACKAGING.

VENDOR REPRESENTATIVE:		DATE:		<p><b>SARIS CYCLING GROUP</b> 5253 VERONA RD., MADISON WI 53711 1-800-783-7257 / 1-608-274-1702 WWW.SARIS.COM</p>	
UNLESS OTHERWISE SPECIFIED DIMENSIONS ARE IN METRIC TOLERANCES ARE:		CAD GENERATED DRAWING, DO NOT MANUALLY UPDATE, DO NOT SCALE DRAWING			
MATERIAL:		APPROVALS		DATE	
SEE BILL OF MATERIAL		DRAWN <b>M. DAHL</b>		10/25/05	
FINISH:		CHECKED		RESP ENG	
NONE		MFG ENG		PROD. REP.	
METRIC:		X mm = .50		.XX mm = .15	
.X mm = .25		.XXX mm = .100		ANGLES ±1°	
TITLE:		SCALE		SIZE	
<b>2.4 SL CPU ASSEMBLY</b>		<b>1:1</b>		<b>B</b>	
DWG. NO.		REV.		SHEET	
<b>16740</b>		<b>F</b>		<b>1 OF 1</b>	