

Description

The Kovera System Development Kit (SDK) contains the following items:

Kovera Reader

Kovera Software CD-ROM

USB Cable

Sample Tags*

*Supported card/tag(s): Kovio K14T1, K14T2, K14B1, K14B2, and K2SB1, Mifare Ultralight, Mifare 1K, Mifare 4K

System Requirements

PC Software Requirements: Windows 2000, WindowsXP, or Vista

Step 1: Install the Kovera Software

Insert the Kovera Software Installation CD into the computer. If the program does not automatically install, click on KoveraInstall.EXE and follow the online setup windows

Step 2: Connect the Reader to the Computer

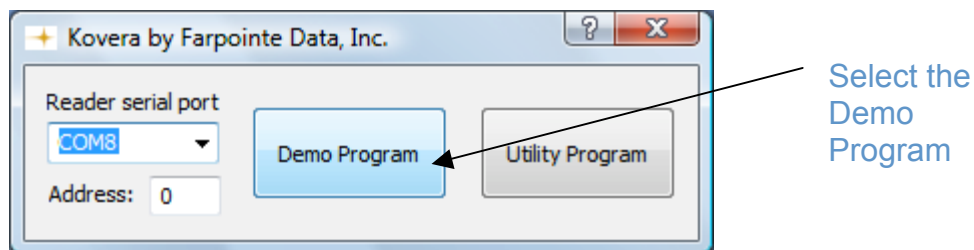
Connect the reader to the host PC with USB cable as shown.



Step 3: Run the Program



Click on the desktop shortcut to start the program. Highlight the COM port the reader is connected to, and then select Demo Program. The Utility program is intended for developers to explore the programming commands.



More detailed information can be found in the Demonstration Program User's Guide, installed with the software.

The Kovera reader uses the Delta USB hardware. The Delta USB reader is compliant with the following organizations:



FCC Compliance Statement: This device complies with part 15 of the FCC rules. Operation is subject to the following two conditions: (1) this device may not cause harmful interference, and (2) this device must accept any interference received, including interference that may cause undesired operation.

The user is cautioned that making changes not approved by Farpointe Data may void the user's authority to use this equipment.

NOTE: This equipment has been tested and found to comply with the limits for a Class B digital device, pursuant to Part 15 of the FCC Rules. These limits are designed to provide reasonable protection against harmful interference in a residential installation. This equipment generates, uses and can radiate radio frequency energy and, if not installed and used in accordance with the instructions, may cause harmful interference to radio communications. However, there is no guarantee that interference will not occur in a particular installation. If this equipment does cause harmful interference to radio or television reception, which can be determined by turning the equipment off and on, the user is encouraged to try to correct the interference by one or more of the following measures:

- Reorient or relocate the receiving antenna.
- Increase the separation between the equipment and receiver.
- Connect the equipment into an outlet on a circuit different from that to which the receiver is connected.
- Consult the dealer or an experienced radio/TV technician for help.

©2008 Farpointe Data, Inc. Kovera name and logo are trademarks of Farpointe Data, Inc Other product and company names herein may be trademarks of their respective companies.