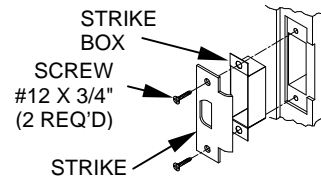


SECTION 6: INSTALL THE STRIKE

- Mark the location of the Latch Bolt on the Door Frame.
- Center the Strike over the Latch Bolt Mark and, using the Strike as a template, mark the Frame.
- Using the Strike Box as a template, mark the Frame.
- Mortise the Frame to accept the Strike and Strike Box.
- Install the Strike Box and the Strike and secure with the Screws.



SECTION 7: PROGRAM THE LOCKSET

IMPORTANT: To avoid unauthorized access, it is important to program a new Programmer ID.

Refer to the OMNILOCK Administrator's Guide for programming instructions. If the System has been installed on a door before the required programming information is available, and your system has a keypad, the access Level may be set to Unlocked as follows:

- Enter the Default Manager ID **2222**, at the keypad, the green light will flash.
- Press **2**, the green light will flash.
- Press and hold the **CL** key until the green light flashes four times. (The light will flash once when the **CL** key is pressed, continue to hold the key until the light flashes three more times.)
- The System will remain in the Unlocked mode.

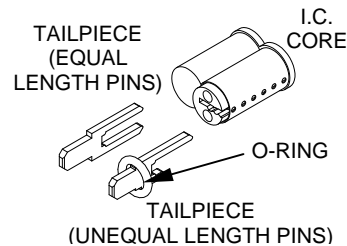
SECTION 8: INTERCHANGEABLE CORE

8-1 INTERCHANGEABLE (I.C.) CORE AND TAILPIECE INSTRUCTIONS FOR ARROW I.C. CORES

Be certain to use the correct Tailpiece with the Core. Six-Pin Cores use only the "L6" Tailpiece and Seven-Pin Cores use only the "L7" Tailpiece.

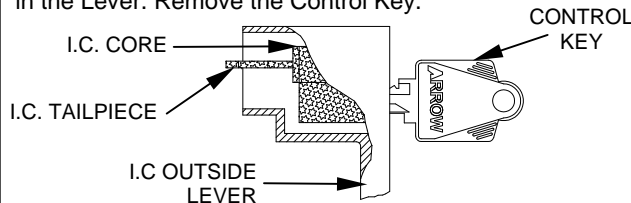
NOTE:

There are two styles of Tailpieces, one style has equal length pins and the other style has unequal length pins. Use the Tailpiece with equal length pins if the pins will completely enter the holes in the Core. Otherwise use the Tailpiece with unequal length pins and install the O-ring onto the Tailpiece tab.



8-2 INTERCHANGEABLE (I.C.) CORE INSTALLATION

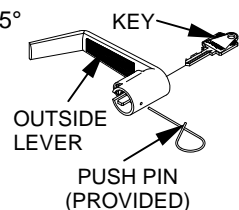
Insert the applicable I.C. Tailpiece into the I.C. Core. Insert the Control Key into the I.C. Core and turn it 15° clockwise. Insert the Core into the I.C. Outside Lever and turn the Control Key 15° counterclockwise to lock the Core in the Lever. Remove the Control Key.



SECTION 9: REMOVAL OF LEVERS

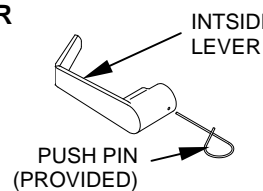
9-1 REMOVING OUTSIDE LEVER WITH STANDARD CYLINDER

- Insert the Key into the Cylinder and turn 45° clockwise.
- Depress the Lever Catch through the hole in the Outside Lever by using the Push Pin provided or another suitable tool.
- Slide the Outside Lever from the Spindle.



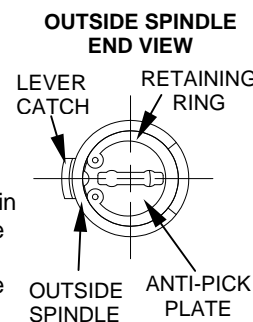
9-3 REMOVING THE INSIDE LEVER

- Depress the Lever Catch through the hole in the Inside Lever by using the Push Pin provided or another suitable tool.
- Slide the Inside Lever from the Spindle.



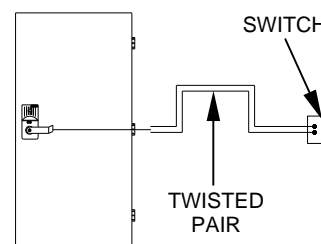
9-2 REMOVING OUTSIDE LEVER WITH INTERCHANGEABLE (I.C.) CORE

- Insert the control Key into the I.C. Core and rotate it 15° clockwise. Pull on the Key to remove the I.C. Core. Be sure that the I.C. Tailpiece is removed with the Core.
- Ensure that the Retaining Ring and the Anti-Pick Plate are aligned with the Lever Catch as shown.
- Insert an awl or a small screwdriver through the I.C. Outside Lever and into the slot in the Anti-Pick Plate. Depress the Lever Catch toward the Door Hinge and slide the I.C. Outside Lever from the Spindle.



SECTION 10: REMOTE SWITCH

- Remote operation of the System may be accomplished by a momentary Switch closure. This may be desirable for someone monitoring a protected entrance, such as a receptionist. Momentarily pressing the Switch will cause the System to go through a normal unlock and lock sequence. If the Switch is held closed, the open time will be extended.
- Connect a **twisted pair** of wires from the Terminal Block on the PC Board to a normally open momentary contact Switch. Plan the route for your wire and the access route through the door to the PC Board in the OMNILOCK Module. Plan for disconnecting the wires in the Lock area so that the System can be removed from the door to change the Batteries as required.



INSTALLATION INSTRUCTIONS FOR OPW2000 SERIES NON-WEATHERIZED, CYLINDRICAL LOCKSET USING ARROW™ Q-SERIES LOCK (LEVER)

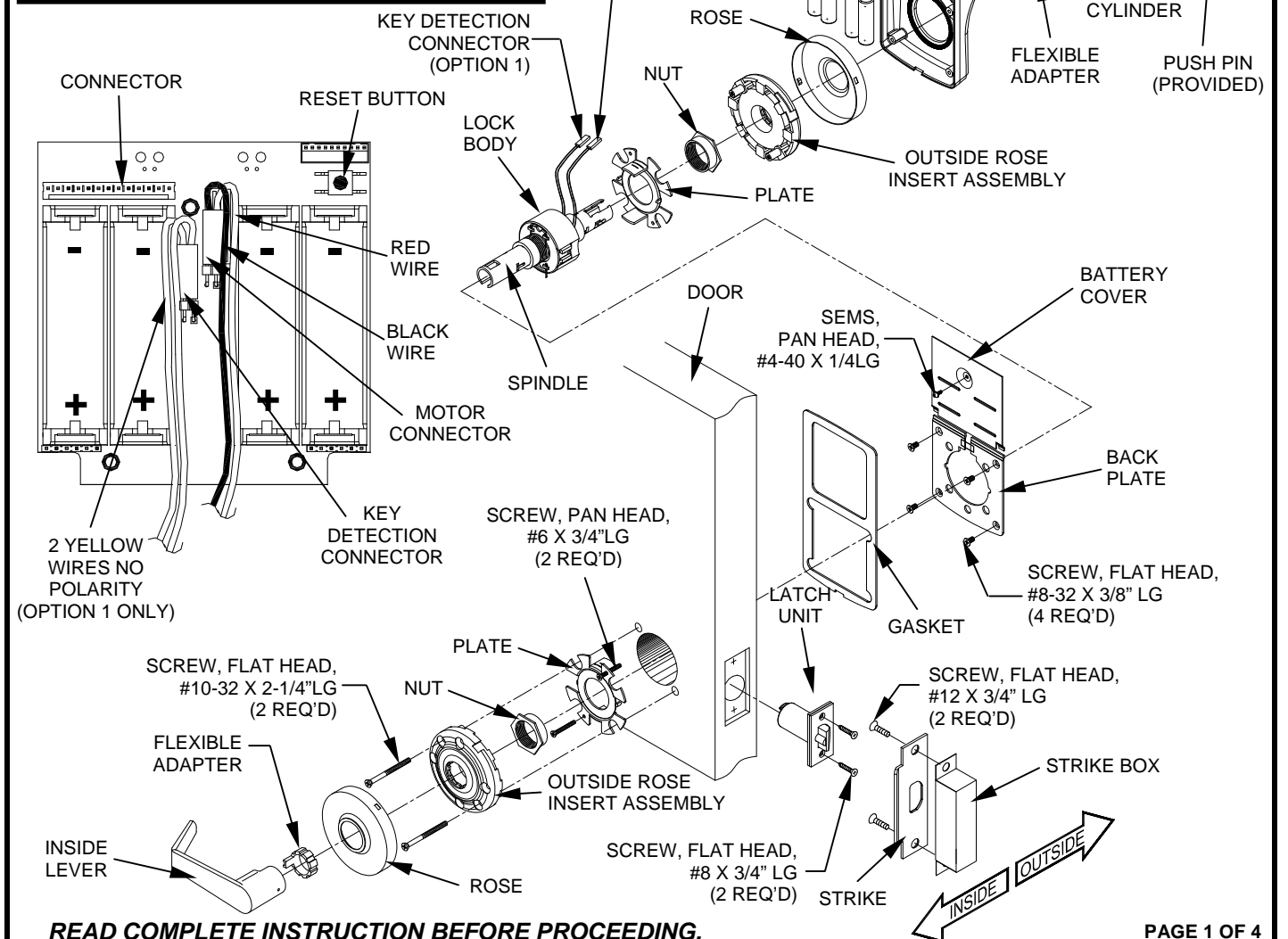
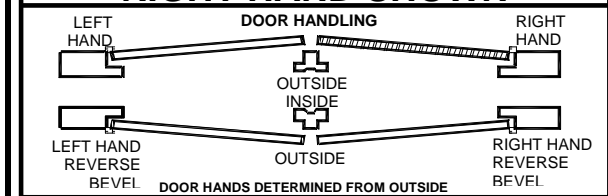
WARNING: THIS PRODUCT IS NOT WARRANTED FOR OUTDOOR USE!

WARNING: CHANGES OR MODIFICATIONS NOT EXPRESSLY APPROVED BY OSI SECURITY DEVICES COULD VOID THE USER'S AUTHORITY TO OPERATE THE EQUIPMENT.

NOTE: A DOOR-CLOSER IS HIGHLY RECOMMENDED FOR USE WITH THIS PRODUCT.

THIS PRODUCT IS NORMALLY FACTORY-PACKED FOR RIGHT-HAND 1-3/4" THICK DOORS. TO CHANGE HAND OF LOCK SEE INSTRUCTION SECTION 3 **DO NOT USE ON DOORS THICKER THAN 1-3/4".**

RIGHT HAND SHOWN

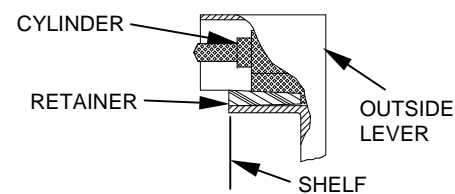


READ COMPLETE INSTRUCTION BEFORE PROCEEDING.

SECTION 1: INSTALL THE KEY CYLINDER AND OUTSIDE LEVER

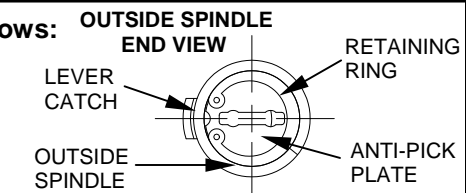
1-1 If the Lever requires a standard Key cylinder, proceed as follows:

- Using standard Pliers, pull out the Outside Retainer.
- Insert the Cylinder into the Outside Lever.
- Secure the Cylinder by pressing the retainer until it is flush with the shelf.
- Slide the Outside Lever onto the Outside Spindle as far as possible. Insert the Key and turn of 45° clockwise. Push the Lever again, until the Lever Catch is engaged, securing the Lever.



1-2 If the Lever requires an Interchangeable core (I.C.), proceed as follows:

- Ensure that the retaining Ring and Anti-pick Plate are oriented as shown.
- Push the I.C. Lever onto the Outside Spindle until the Lever Catch is engaged.
- Install the Interchangeable Core per Section 8.



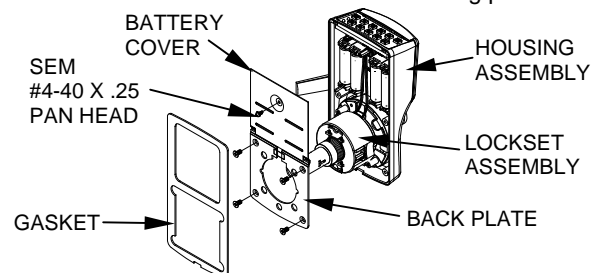
SECTION 2: CHECK OPERATION

- Verify proper operation of the System using the Default Programmer ID Proximity card. Momentarily place the center of the Proximity Card (Included in the OMNILOCK Administrator's Kit) over the recess in the front of the OP2000. The OP2000 will flash green once and unlock, then, during the Open Delay Time, it will flash green five times. The OP2000 will flash red and lock. While unlocked, check for proper operation of the lock.
- If your System has a Keypad Proceed as follows, otherwise go to Step c: Verify proper operation of the System using the Keypad. Enter the Default Programmer ID, **1 2 3 4**, at the Keypad. The Lights will flash as in the previous step.
- If Key Detection is installed, proceed as follows, otherwise go to step d: Verify proper operation of the Key Detection Indicator by inserting the Key into the Key Cylinder and rotating clockwise. The green light will flash.
- If the System malfunctions remove the Battery Cover and check for proper orientation and seating of the Batteries, Motor Connector and Key Detection Connector. Ensure that the wires are not pinched. Reset the electronics by pressing and holding the Reset Button on the circuit board until the light flashes green, approximately three seconds. The System will go through a self-test and flash green 5 times. Any red flash indicates an electronics or motor problem. Repeat the verification process if all flashes are green.

SECTION 3: ADJUST THE LOCK HAND

3-1 This section is only required if the lock hand does not meet your requirements. The Lockset is normally preset for a right hand door. Verify the handing of the Lock and, if required, change the hand of the Lock as follows after checking per Section 2.

- Carefully release the Gasket from the edge of the Housing Assembly using your fingers, and remove the Gasket. Remove the Screw from the Battery Cover and remove the Cover. Disconnect the Motor Connector and Key Detection connector, if Key Detection is installed, from the CPU Board.
- Remove four Flat Head Screws from the Back Plate and remove the Back Plate.

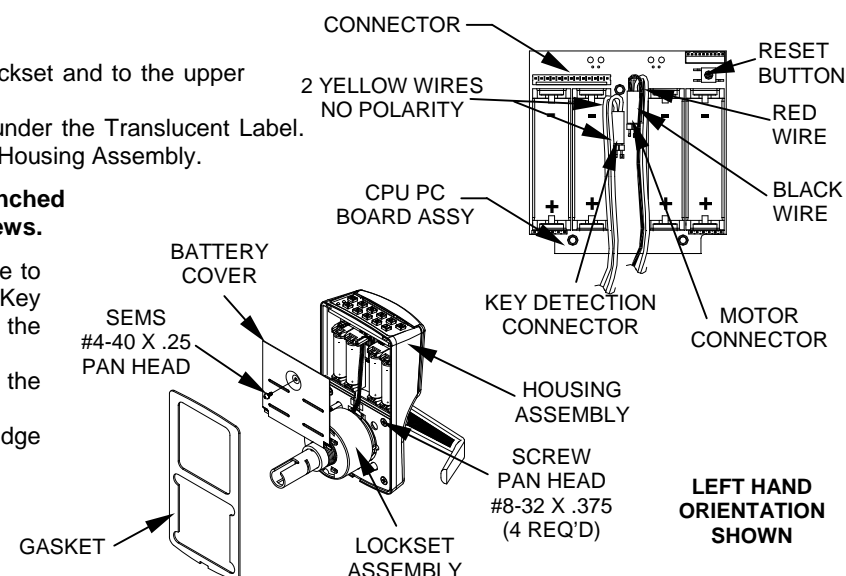


3-2

- Rotate the lockset to left-hand orientation.
- Route the Wires close to the center of the Lockset and to the upper center of the Outside Rose.
- Align Wires into the notch of the Back Plate under the Translucent Label. Install the Back Plate and four Screws into the Housing Assembly.

WARNING: Ensure that the Wires are not pinched before and after tightening the Screws.

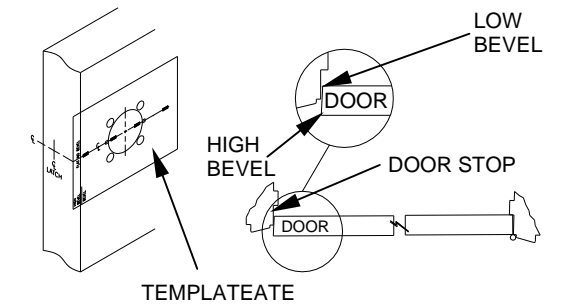
- Install the Motor Connector with the Black Wire to the left (see label on CPU Board). Install the Key Detection Connector (if available). Arrange the excess wire between the Battery Holders.
- Install the Battery Cover and secure it with the Screw.
- Install the Gasket so that it seats inside the edge of the Housing.



SECTION 4: PREPARE THE DOOR

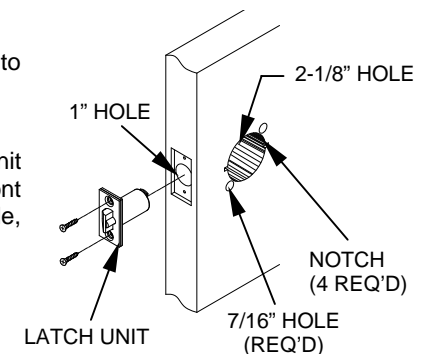
4-1 MARK HOLE LOCATIONS

- Mark a height line on the door faces and edge (suggested height is 38" from the floor).
- Line up the Template at the correct marking for the Door Bevel (high or low bevel, or flat). Position the centerline of the Template on the height line. Note whether the holes should be marked on the inside, outside, or both sides of the door. Mark the centers as required for the holes.
- Mark the center of the Door thickness on the height line.



4-2 DRILL HOLES

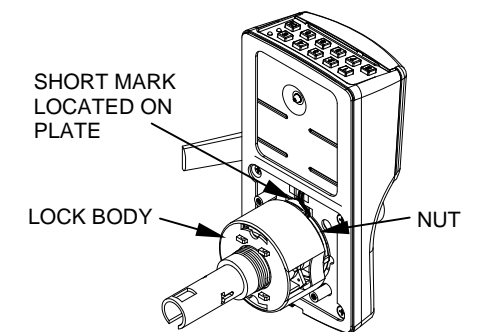
- Bore the 2-1/8" hole and the 7/16" holes half way through the door from both sides to avoid splintering.
- Add the notches to both sides of the door.
- Bore a 1" hole into the door edge center on the height line. Use the Latch Unit Faceplate as a pattern and mark the door edge. Mortise the door edge so that the front of the faceplate will be flush with the door edge. Insert the Latch Unit into the 1" hole, making certain that the Latch Bolt Bevel faces the direction of the closing Door.
- Secure the Latch Unit with the Screws supplied.



SECTION 5: INSTALL THE SYSTEM ON THE DOOR

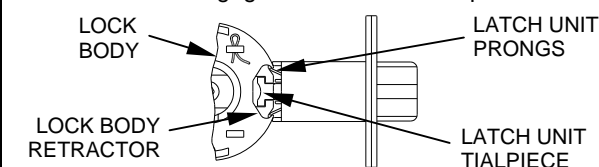
5-1 NOTE: DO NOT USE ON A DOOR THICKER THAN 1-3/4" UNLESS THE SYSTEM IS SPECIFICALLY DESIGNED FOR A THICKER DOOR

- The Lockset is preset for a 1-3/4" Door. For 1-3/4" Door the "short mark" on the Lockset Plate is aligned with the edge on the Lock Body.
- For a 1-3/4" door with a Push Plate (.050" max.) turn the Nut counter clockwise until the short mark is the thickness of the Push Plate from the edge of the Lock Body. Adjust the Outside Nut with a pair of narrow jaw Pliers, a small Screwdriver, a Scribe, or your Fingers.
- If a Remote Switch is to be used to operate the System, see Section 10.



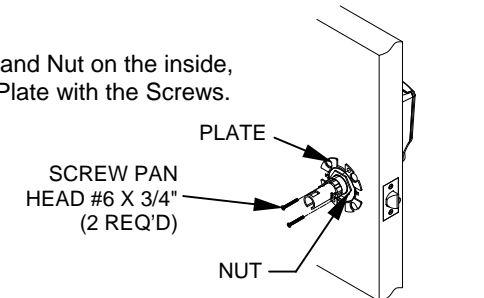
5-2

Install the System on the outside of the door. The Lock Body must engage the Latch Unit Prongs as shown. The Lock Body Retractor must engage the Latch Unit Tailpiece.



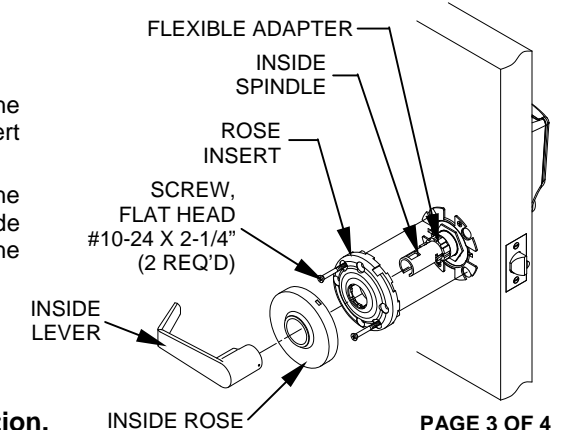
5-3

Install the Plate and Nut on the inside, and secure the Plate with the Screws.



5-4

- Align the Tab of the Flexible Adapter opposite to the Lever Catch.
- Slide the Rose Insert onto the Inside Spindle so that the projections of the Flexible Adapter line up with matching depressions of the Rose Insert Assembly and secure the Rose Insert with the Screws.
- Place the Inside Rose onto the Rose Insert aligning the dimples with the recesses in the Rose Insert and turn clockwise to secure it. Slide the Inside Lever on the Inside Spindle. Make certain that the Lever Catch on the Spindle is engaged with the Lever.
- Repeat Section 2 to verify proper operation.



Binding or rough operation is an indication of improper installation.