

# Switch™ Reader Add-On Installation Instructions



dormakaba Group

## TOOLS NEEDED

Drill



Drill Bits

- 0.366 (Letter U)
- 0.136 (#29)

Safety Glasses



Screwdrivers

- #2 Phillips
- Tamper Proof Torx T8
- 1/64 Slotted

Center Punch



Tape Measure



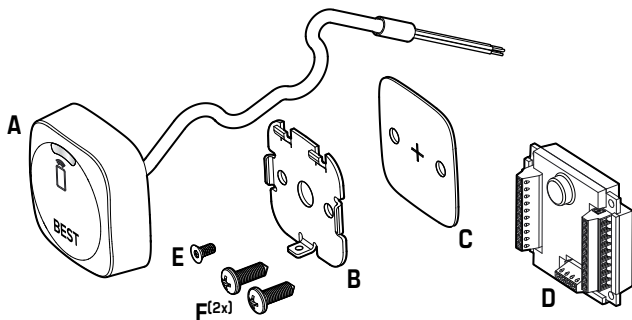
## OVERVIEW

### Features

- Operating temperature range:  
-35°C to +66°C or -31°F to +151°F
- IP Rated: IP56

**NOTE:** Available wire lengths to connect to provided 18" harness:

- 011-518290: 10" (sold separately)
- 011-518290: 25" (sold separately)
- 011-518290: 50" (sold separately)



A

Cover-Control Circuit Board  
and Harness Assembly

D

Main Control Circuit Board

B

Mounting Plate

E

Flat Head Undercut Tamper  
Proof Screw Torx Drive  
T8: 4-40 × 1/4"

C

Gasket

F(2x)

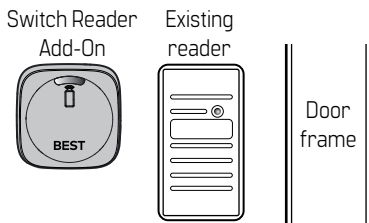
Self-Tapping Screw Pan  
Head Stainless Steel Phillips  
Drive #2: 8-32 × 1/2"

## Switch Reader Add-On Installation Instructions

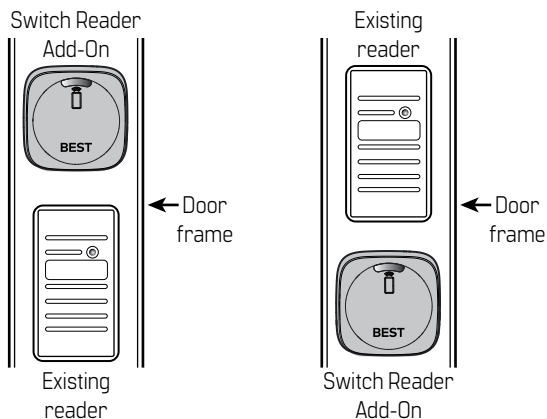
### 1 CONSIDER MOUNTING PLACEMENT.

**NOTE:** The placement of the **Switch Reader Add-On** will vary from application to application based on the environment and aesthetic preference.

Consider the mounting placement of the **Switch Reader Add-On** by placing the reader beside, above or below the existing reader.



#### 1 Place beside the existing reader.



#### 2 Place above or below the existing reader.

### 2 PREPARE SURFACE.

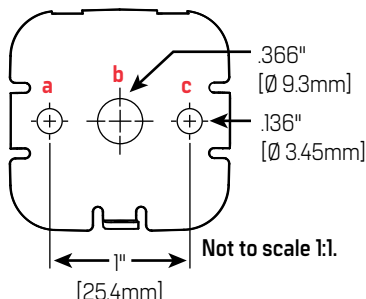
**NOTE:** For the provided mounting screws **F<sup>(2x)</sup>**, adjust as needed depending on the surface and the hardware.

**NOTE:** The provided mounting screws **F<sup>(2x)</sup>** will not cover all installation scenarios due to certain surface compositions such as brick, drywall, or other materials. Ensure that the correct drill bits, mounting screws and screw anchors are purchased and used to meet the needs of each individual application.

**WARNING:**

Take proper precautions when installing the **Switch Reader Add-On**.

#### Mounting Plate (B) Hole Locations



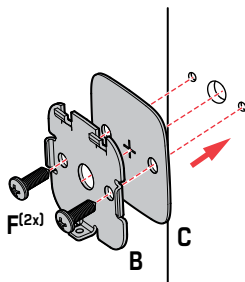
**NOTE:** Mounting plate (B) may be used as a drilling template.

- 1 Prepare the surface by ensuring the surface is clean and smooth.
- 2 Using the mounting plate (B) as a template, place and correctly orient the mounting plate (B) onto the surface.
- 3 Use a center punch tool to mark holes a, b, and c.
- 4 Drill holes.

## Switch Reader Add-On Installation Instructions

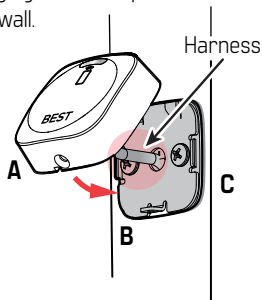
### 3 FASTEN MOUNTING PLATE AND GASKET TO SURFACE.

**REMINDER:** Install the mounting plate **(B)** to a clean and smooth surface using appropriate hardware.

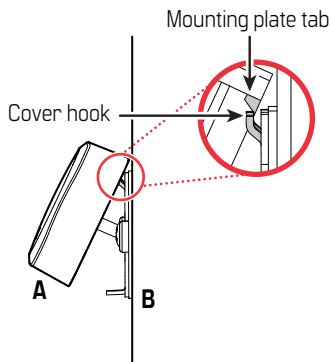


### 4 RUN HARNESS THROUGH MOUNTING PLATE AND GASKET.

**NOTE:** Carefully thread the harness through the mounting plate **(B)**, gasket **(C)** and into the wall cavity to avoid damaging other components housed in the wall.



### 5 INTERLOCK COVER HOOK WITH MOUNTING PLATE TAB.



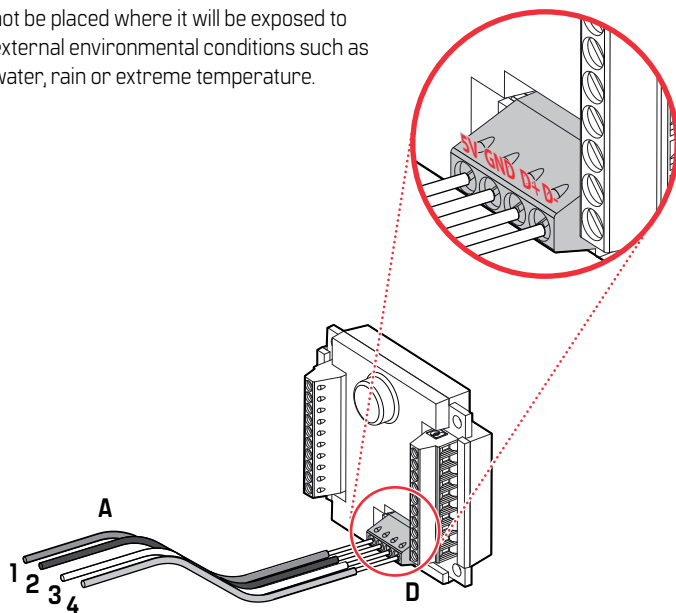
### 6 SECURE COVER WITH TAMPER PROOF SCREW.



## Switch Reader Add-On Installation Instructions

### 7 CONNECT READER/HARNESS ASSEMBLY TO MAIN CONTROL CIRCUIT BOARD.

**NOTE:** The main control circuit board should not be placed where it will be exposed to external environmental conditions such as water, rain or extreme temperature.



#### SWITCH READER ADD-ON TO MAIN CONTROL CIRCUIT BOARD

ID	5V	GND	D+	D-
Position	1	2	3	4
Wire Color	RED	BLACK	WHITE	GREEN

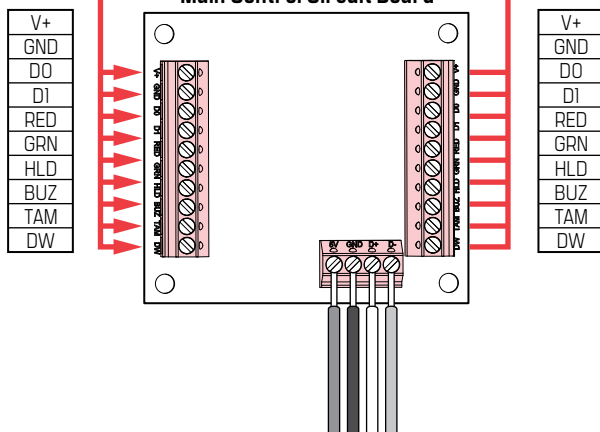
## Switch Reader Add-On Installation Instructions

### 8 CUT EXISTING ACCESS CONTROL WIRE AND RECONNECT TO SWITCH READER ADD-ON MAIN CONTROL CIRCUIT BOARD.

**NOTE:** The existing building site's reader, access control wiring and panel placement will vary in each installation.

From access  
control reader

To existing reader



COMPLETE

### Statement

**THIS DEVICE COMPLIES WITH PART 15 OF THE FCC RULES.**

**Operation is subject to the following two conditions:**

- (1) This device may not cause harmful interference, and
- (2) This device must accept any interference received, including interference that may cause undesired operation.

Changes or modifications to this equipment not expressly approved by the party responsible for compliance (Hardware Manufacturer: dormakaba) could void the user's authority to operate the equipment.

### WEEE



This symbol means that you must dispose of an electrical item AND/OR containing in it Li-Mn battery separately from general household waste when they reach the end of their useful life. Take your PC or the battery to your local waste collection point or center. This applies to all countries of the European Union, and to other countries with a separate waste collection system.

### Statement

This equipment has been tested and found to comply with the limits for a Class B digital device, pursuant to part 15 of the FCC Rules. These limits are designed to provide reasonable protection against harmful interference in a residential installation. This equipment generates, uses and can radiate radio frequency energy and, if not installed and used in accordance with the instructions, may cause harmful

interference to radio communications. However, there is no guarantee that interference will not occur in a particular installation. If this equipment does cause harmful interference to radio or television reception, which can be determined by turning the equipment off and on, the user is encouraged to try to correct the interference by one or more of the following measures:

- Reorient or relocate the receiving antenna.
- Increase the separation between the equipment and receiver.
- Connect the equipment into an outlet on a circuit different from that to which the receiver is connected.
- Consult the dealer or an experienced radio/TV technician for help.

### Statement

**THIS DEVICE COMPLIES WITH INDUSTRY CANADA LICENCE-EXEMPT RSS STANDARD(S).**

**Operation is subject to the following two conditions:**

- (1) This device may not cause interference, and
- (2) This device must accept any interference, including any interference that may cause undesired operation of the device.

This Class [B] digital apparatus meets all requirements of the Canadian Interference-Causing Equipment Regulations.

**CET APPAREIL EST CONFORME À LA NORME RSS INDUSTRIE CANADA EXEMPT DE LICENCE.**

**Son fonctionnement est soumis aux deux conditions suivantes:**

## FCC/IC Certification

- (1) Cet appareil ne doit pas provoquer d'interférences, et
- (2) Cet appareil doit accepter toute interférence, y compris les interférences pouvant causer un mauvais fonctionnement du dispositif.

Cet appareil numérique de la classe [B] respecte toutes les exigences du Règlement sur le matériel brouilleur du Canada.



**WARNING:** Changes or modifications not expressly approved by **dormakaba** could void the user's authority to operate the equipment.



English

**For Online Instructions Visit:**

<https://dhwsupport.dormakaba.com/hc/en-us>

**For Assistance or Warranty Information:**

Call 1-800-392-5209 or visit

<https://dhwsupport.dormakaba.com/hc/en-us>



El idioma español

**Para obtener instrucciones línea, visite:**

<https://dhwsupport.dormakaba.com/hc/en-us>

**Si desea ayuda o información sobre la garantía:**

llame al 1-800-392-5209 o visite

<https://dhwsupport.dormakaba.com/hc/en-us>



El idioma francés

**Pour obtenir des directives en ligne, consultez le site :**

<https://dhwsupport.dormakaba.com/hc/en-us>

**Pour de l'aide ou des informations sur la garantie:**

Veuillez appeler le 1-800-392-5209 ou visiter