

<b>Title:</b> <b>SWITCH READER ADD-ON</b> <b>LABEL</b>	<b>No. du document / Document No.</b> <b>EFS-516851/EFS-516852</b> <b>Sheet 1 of 2</b>	<b>Revision</b> <b>1</b>
<b>Fait par / Made By: Francois Girardin</b>		<b>Date: May 27<sup>th</sup>, 2021</b>

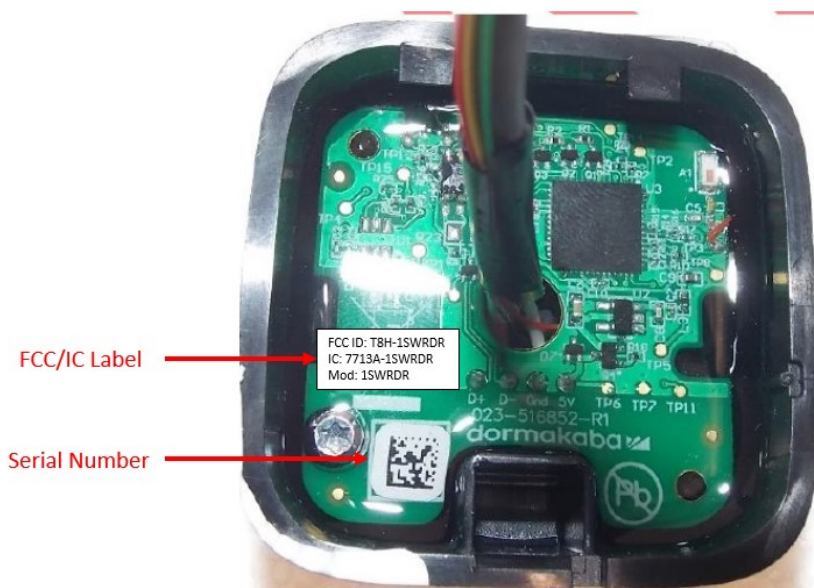
# **SWITCH READER ADD-ON** **LABEL**

<b>Title:</b> <b>SWITCH READER ADD-ON</b> <b>LABEL</b>	<b>No. du document / Document No.</b> <b>EFS-516851/EFS-516852</b> <b>Sheet 2 of 2</b>	<b>Revision</b> <b>1</b>
<b>Fait par / Made By: Francois Girardin</b>		<b>Date: May 27<sup>th</sup>, 2021</b>

## 1. Label

The Switch Reader Add-On has the FCC and IC numbers printed on a label on the BLE PCB. Because the PCB is very small, the serial number is also written on a 2D bar code label. The BLE PCB is fully covered with transparent potting material during the assembly process so the labels are permanent and cannot be removed.

The information written on the label is visible inside the Switch Reader Add-On whenever the device is unmounted from the wall (out of the box or during installation/maintenance). This operation can be done by the customer. It was not possible to place this FCC/IC information on the outside of the unit without seriously impacting the appearance of the product.



**Figure 1-1 Switch Reader Add-On Label**