
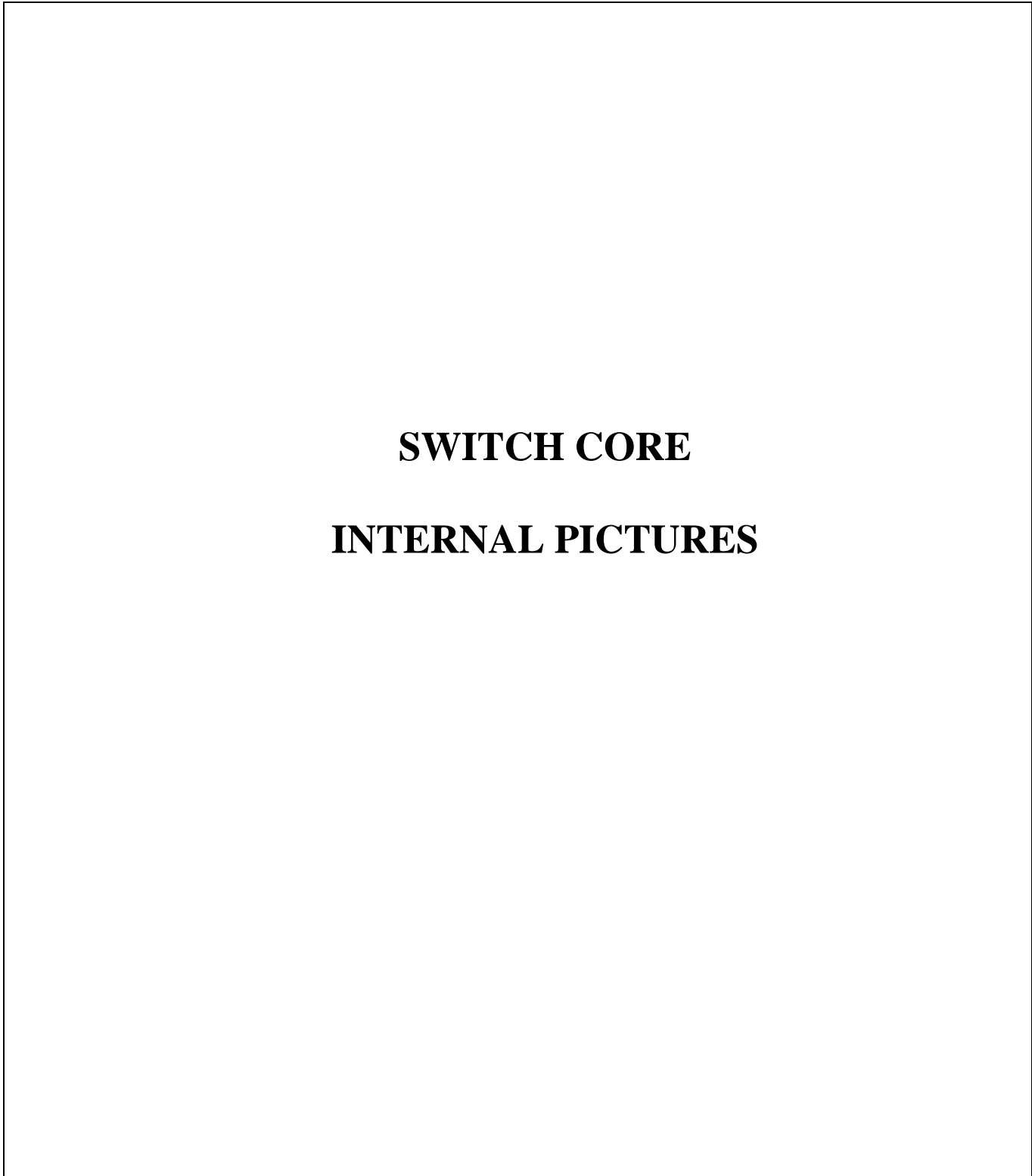


<b>Title:</b> <b>SWITCH CORE</b> <b>INTERNAL PICTURES</b>	<b>dormakaba</b> 	<b>Date:</b> Dec 19 <sup>th</sup> , 2019
<b>Made By:</b> Sylvain Martel		<b>Sheet 1 of 6</b>



<b>Title:</b> SWITCH CORE INTERNAL PICTURES	<b>dormakaba</b> 	<b>Date:</b> Dec 19 <sup>th</sup> , 2019
<b>Made By:</b> Sylvain Martel		<b>Sheet</b> 2 of 6

## 1- Switch Core Internal Pictures



Figure 1- Switch Core Uninstalled

**CONFIDENTIAL**

<b>Title:</b> SWITCH CORE INTERNAL PICTURES		<b>Date:</b> Dec 19 <sup>th</sup> , 2019
<b>Made By:</b> Sylvain Martel		<b>Sheet</b> 3 of 6

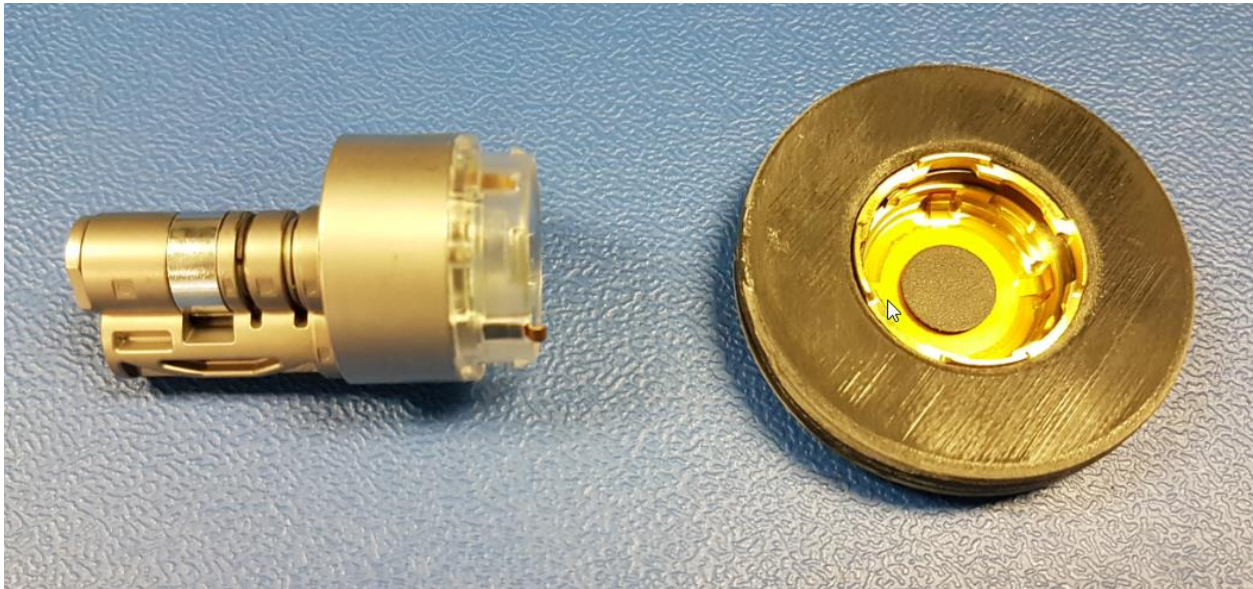


Figure 2- Switch Core Cap Removal with tool (No Battery)

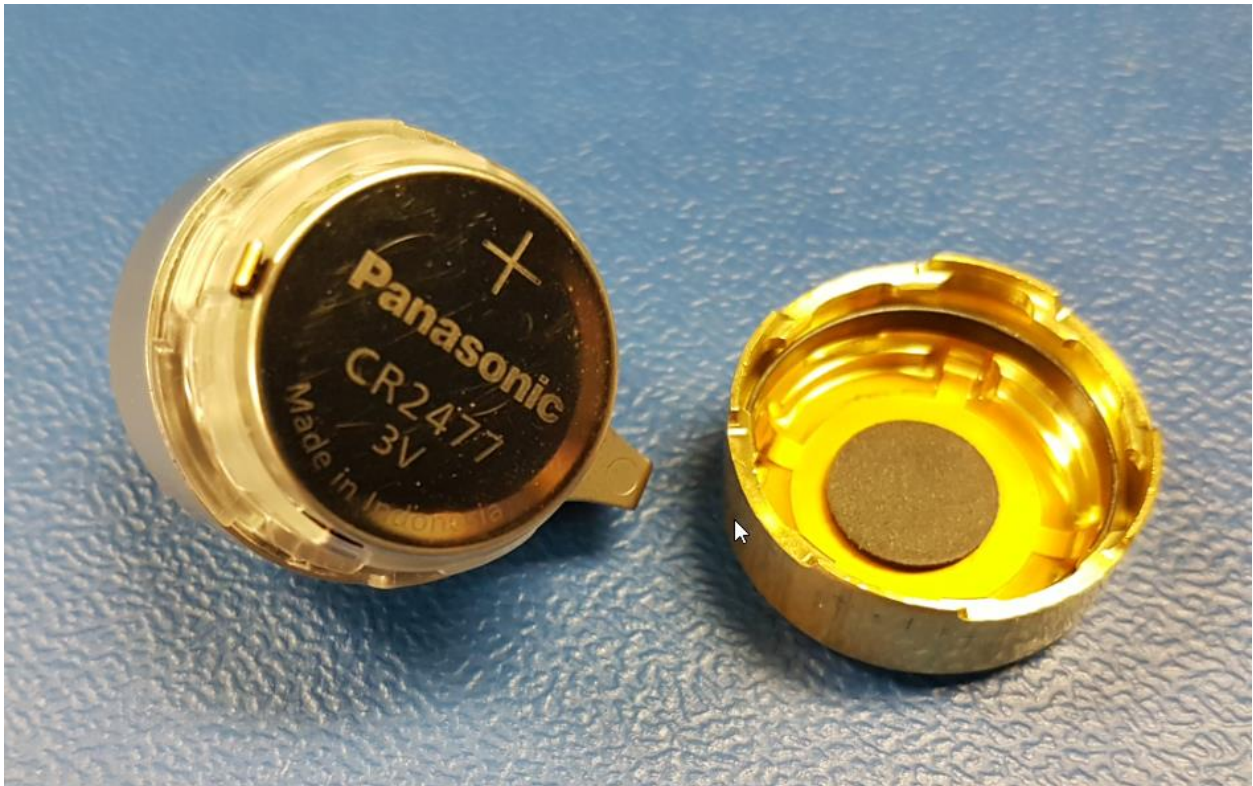


Figure 3- Switch Core with Coin Cell Battery

**CONFIDENTIAL**



<b>Title:</b> <b>SWITCH CORE</b> <b>INTERNAL PICTURES</b>		<b>Date:</b> Dec 19 <sup>th</sup> , 2019
<b>Made By:</b> Sylvain Martel		<b>Sheet</b> 4 of 6

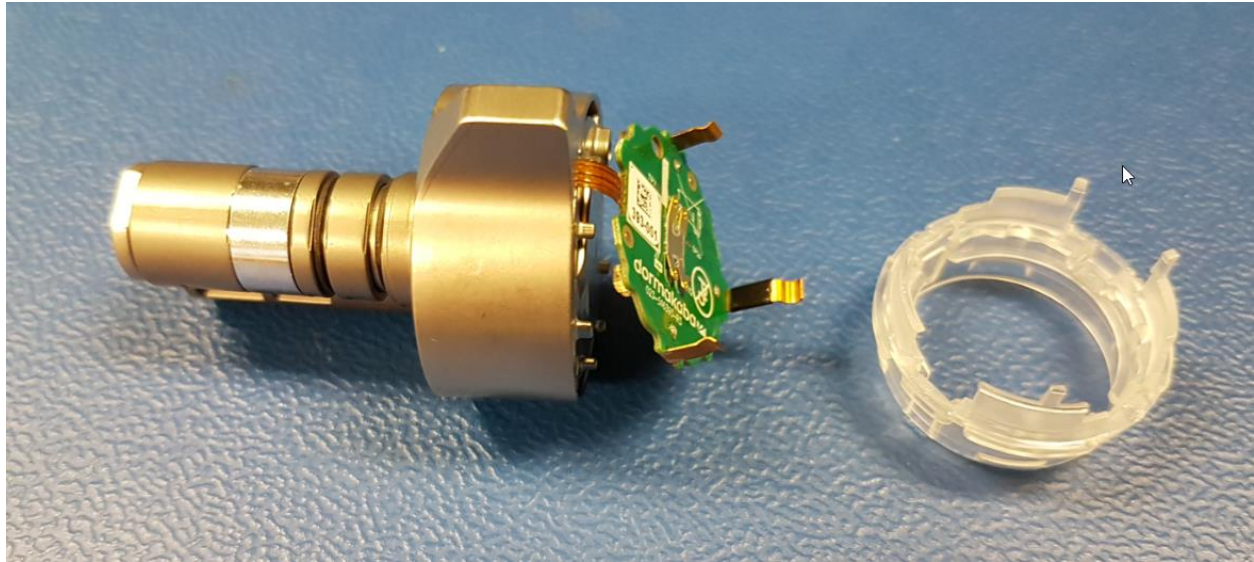


Figure 4- Switch Core with Plastic Ring Removed



Figure 5- Switch Core with Front Knob detached from Cylinder

**CONFIDENTIAL**



<p style="text-align: center;"><b>Title:</b> SWITCH CORE INTERNAL PICTURES</p>		<p>Date: Dec 19<sup>th</sup>, 2019</p>
<p>Made By: Sylvain Martel</p>		<p>Sheet 5 of 6</p>

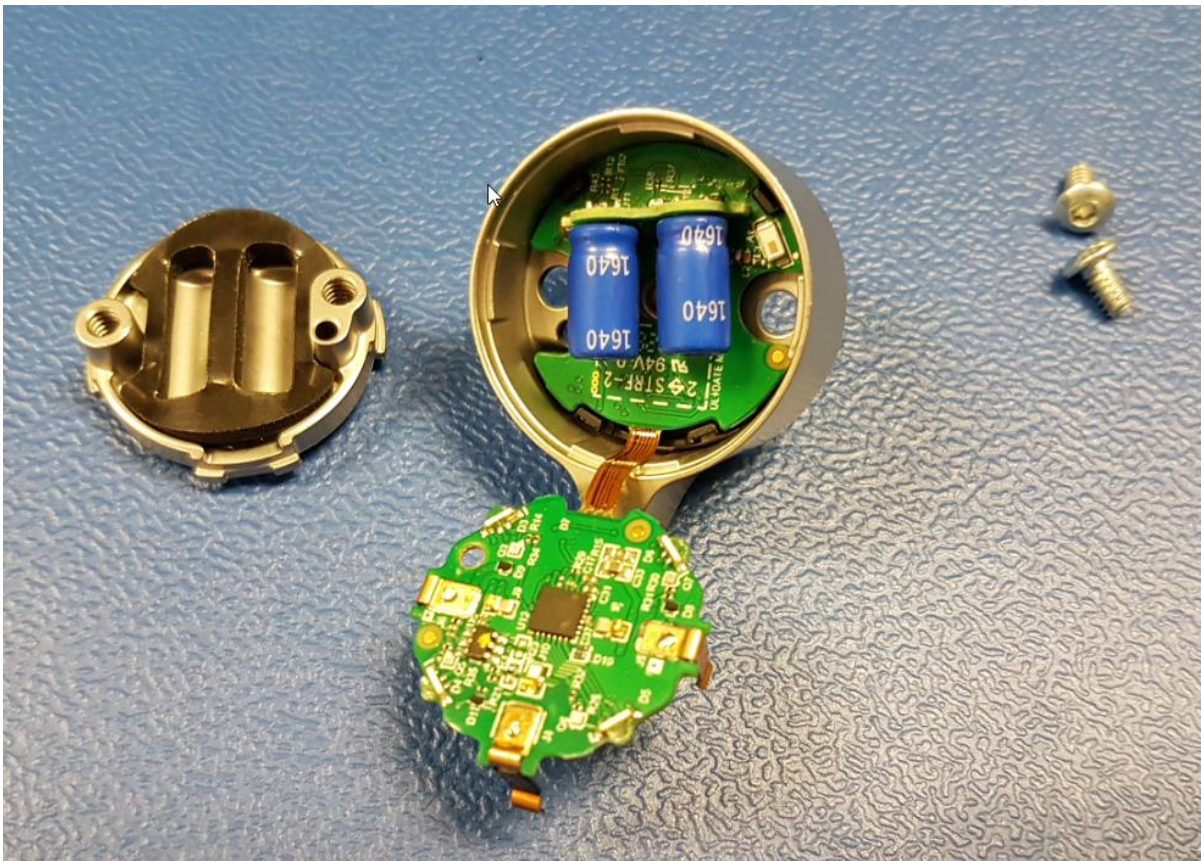


Figure 6- Switch Core with Front Knob Opened



Figure 7- Switch Core PCB with Motor

**CONFIDENTIAL**



<p><b>Title:</b> <b>SWITCH CORE</b> <b>INTERNAL PICTURES</b></p>		<p><b>Date:</b> Dec 19<sup>th</sup>, 2019</p>
<p><b>Made By:</b> Sylvain Martel</p>		<p><b>Sheet</b> 6 of 6</p>

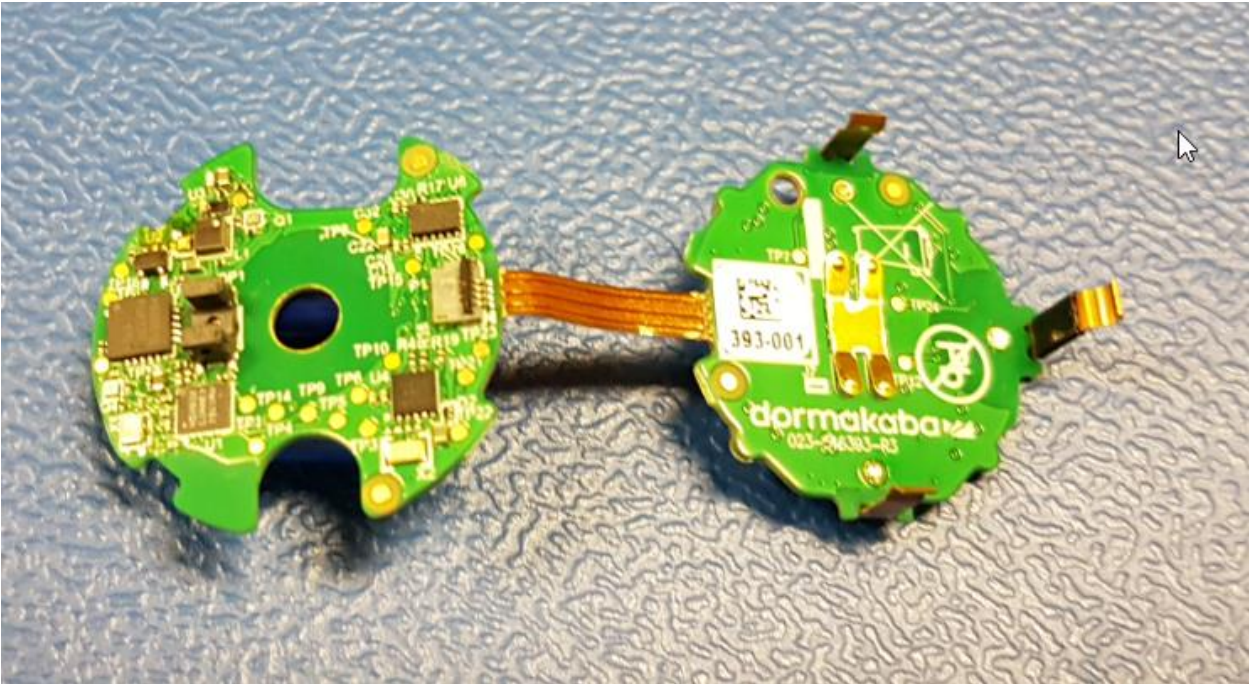


Figure 8- Switch Core PCB

**CONFIDENTIAL**