

ConBox

Datasheet Internal Backup Antenna

V1.0

Harman/Becker reserves the copyright to this document. It must not be copied, communicated or made available to third parties without the written authorisation of Harman/Becker

				<i>Department</i>	<i>SBU Connectivity</i>	Conmod Datasheet Backup Battery Internal Backup Antenna	<i>Page</i>
				<i>Date</i>	<i>Name</i>		1
				<i>Drawn</i>	20.02.2019 HARMAN		V1.0
				<i>Check</i>			
				<i>Rel.</i>			
				<i>QME</i>			
01	preparation	20.02.2019	HARMAN			of 5	
<i>Rev.</i>	<i>Change / Note</i>	<i>Date</i>	<i>Name</i>	<i>File</i>	DS-ConBox-Internal-Antenna	<i>Printed.</i>	19.04.23

Contents

1	General	3
1.1	Change History	3
2	Electrical specifications	4
2.1	Key features	4
3	Mechanical specifications	5

1 General

1.1 Change History

Version	Date	Change from Previous	Name	Status
1.0	20/02/2019	Document created	HARMAN	

2 Electrical specifications

2.1 Key features

Cellular 2G/3G/4G back up antenna
 - 698-960 MHz
 - 1710-2170 MHz
 - 2600-2700 MHz

Designed and optimized for use inside eCall/Telematic unit.
 Connection to PCB via contact springs
 Dimensions 74 x 28 x 11.3 mm

Parameters	Cellular Antenna		
Standards	2G,3G and 4G		
Band [MHz]	700 / 820 / 890 / 960	1700 / 1800 / 2100 / 2200	2600 / 2700
Efficiency [%]	56.5 / 50.9 / 43.0 / 51.3	52.4 / 52.8 / 48.6 / 48.0	54.6 / 55.4
Gain [dB]	-3.2 / -0.7 / -0.1 / -1.5	2.7 / 4.4 / 4.8 / 4.1	4.3 / 5.0
Ref. Impedance [Ohm]	50		
Connection type	stainless steel pads		
Operating Temperature [°C]	-40 .. +85		

Measurement Conditions:
 Antenna mounted inside ConBox eCall/Telematic unit.

3 Mechanical specifications

Dimensions: 74 x 28 x 11.3 mm

Material: stainless steel



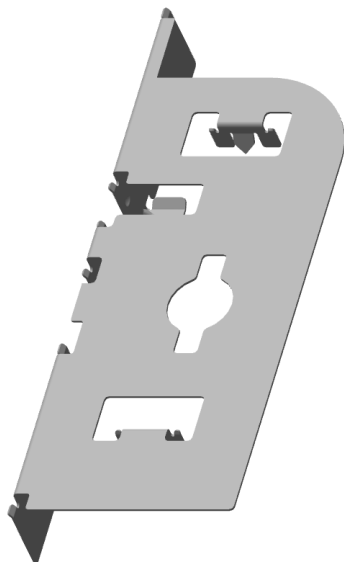
Side view



Top view



Front view



3D view



View antenna inside ConBox housing