



Owner's Manual
2019 A4

Audi Vorsprung durch Technik

Foreword

Thank you for choosing an Audi – we value your trust in us.

Your new Audi will allow you to experience the best in groundbreaking technology and premium quality equipment that a vehicle has to offer. We recommend that you read your Owner's Manual thoroughly so that you quickly become acquainted with your Audi and make use of all of its features.

In addition to explaining how the different features work, we provide many useful tips and information concerning your safety, how to care for your vehicle, and how to maintain your vehicle's value. We also give you useful tips and information on how to drive your vehicle more efficiently and in an environmentally-friendly manner.

We hope you enjoy driving your Audi and we wish you safe and pleasant motoring.

AUDI AG



WARNING

Operating, servicing and maintaining a passenger vehicle or off-highway motor vehicle can expose you to chemicals including engine exhaust, carbon monoxide, phthalates, and lead, which are known to the State of California to cause cancer and birth defects or other reproductive harm. To minimize exposure, avoid breathing exhaust, do not idle the engine except as necessary, service your vehicle in a well-ventilated area and wear gloves or wash your hands frequently when servicing your vehicle. For more information go to www.P65Warnings.ca.gov/passenger-vehicle.

Table of contents

About this Owner's Manual	6	Stowing and using	62
Summary	8	Ashtray	62
Quick access	8	Cigarette lighter	62
Cockpit overview	8	Power sources	62
Indicator lights overview	10	Storage	63
Display and operation	13	Luggage compartment	64
Instrument cluster	13	Roof rack	69
Instrument cluster overview	13	Warm and cold	70
Coolant temperature indicator	14	Climate control system	70
Tachometer	14	3-zone deluxe automatic climate control	71
Fuel level	15	Steering wheel heating	73
Odometer	15	Driving	74
Multifunction steering wheel plus	15	General information	74
Multifunction steering wheel	18	Steering	75
Vehicle functions	19	Shifting into gear	75
Messages	21	Starting and stopping the engine	76
Head-up display	27	Start/Stop system	78
Description	27	Electromechanical parking brake	80
Starting and driving	28	Starting to drive	81
Opening and closing	28	Driving offroad	82
Central locking	28	Automatic transmission	83
Luggage compartment lid	35	Trailer towing	91
Child safety lock	40	Driving with a trailer	91
Power windows	41	Driver assistance	93
Sliding/tilting sunroof	42	Assist systems	93
Panoramic glass roof	43	Speed warning system	93
Valet parking	44	Cruise control system	93
Garage door opener	44	Camera-based traffic sign recognition	95
Lights and Vision	47	Lap timer	97
Exterior lighting	47	Predictive efficiency assist	98
Interior lighting	50	Audi adaptive cruise control	101
Vision	51	Audi pre sense	111
Windshield wipers	53	Audi active lane assist	116
Digital compass	56	Audi side assist	120
Seats	58	Audi drive select	125
General information	58	Parking aid	128
Front seats	58	General information	128
Head restraints	59	Rear parking system	129
Memory function	60	Parking system plus	129
		Rearview camera	131
		Peripheral cameras	132

Table of contents

Adjusting the parking aid	135	Listening to voicemail	180
Error messages	136	Directory	180
Intelligent Technology	137	Additional settings	182
Electronic Stabilization Control (ESC)	137	Troubleshooting	183
Brakes	140	Audi connect	185
Electromechanical steering, Dynamic steering	141	General information	185
All wheel drive (quattro)	141	Audi connect Infotainment	186
Energy management	142	Audi connect Infotainment services	186
Notice about data recorded by the Event Data Recorder and vehicle control modules	142	Audi connect vehicle control services	189
Infotainment system	144	Settings	191
Multi Media Interface	144	Data Privacy	192
Traffic safety information	144	Troubleshooting	193
Introduction	144	Emergency call	194
MMI On/Off knob with joystick function	145	Introduction	194
Infotainment system display	145	Emergency call	194
MMI operation	146	Online roadside assistance	195
MMI touch	147	Navigation	196
Control knob with joystick function	149	Opening navigation	196
Shortcut keys	151	Entering a destination	196
Letter/number speller	151	Personal route assistance	202
Free text search	153	Alternative routes	203
Menus and Symbols	154	Additional settings	203
Multifunction steering wheel	156	Map	205
Introduction	156	Satellite map	208
Radio	156	Map update	209
Media	156	Traffic information	210
Telephone	157	Troubleshooting	212
Navigation	158	Radio	213
Voice recognition system	163	Opening the radio	213
Operating	162	Radio functions	214
Command overview information	163	Radio menu	216
Commands	164	Presets	216
External voice operation	168	Additional settings	216
Telephone	170	Troubleshooting	217
Introduction	170	Media	218
Setup	170	Introduction	218
Using the Audi phone box	173	Notes	218
Using the telephone	174	Media drives	219
Favorites	177	Bluetooth audio player	221
Messages	177	Wi-Fi audio player	221
		Online media and Internet radio	222
		Multimedia connections	224
		Playing media	227

Table of contents

Additional settings	230	Maintenance and Care	304
Supported media and file formats	233	Checking and Filling	304
Troubleshooting	235	Fuel	304
Audi smartphone interface	237	Refueling	305
Setup	237	Emissions control system	307
Operating	238	Engine compartment	308
Troubleshooting	238	Engine oil	311
System settings	239	Cooling system	315
Setting the date and time	239	Brake fluid	316
MMI settings	239	Electrical system	317
Connection manager	240	Battery	317
System update	243	Windshield washer system	320
Sound settings	243	Service interval display	320
Volume settings	244	Wheels	321
Restarting the MMI	245	Wheels and Tires	321
Software license information	245	Tire pressure monitoring system	338
Safety first	246	Care and cleaning	341
Driving safety	246	General information	341
Basics	246	Car washes	341
Correct passenger seating positions	247	Cleaning and care information	342
Driver's and front passenger's footwell	250	Taking your vehicle out of service	346
Pedal area	251	Do It Yourself	347
Safety belts	252	Emergency assistance	347
General information	252	General information	347
Why use safety belts?	253	Equipment	347
Safety belts	255	Tire mobility kit	348
Belt tensioners	258	Changing a tire	350
Airbag system	260	Space-saving spare tire	354
Important information	260	Collapsible spare tire	354
Front airbags	264	Fuses and bulbs	356
Monitoring the Advanced Airbag System	272	Fuses	356
Knee airbags	276	Bulbs	359
Side airbags	278	Emergency situations	361
Side curtain airbags	281	General	361
Child safety	284	Starting by pushing or towing	361
Important information	284	Starting with jumper cables	361
Child safety seats	290	Using the jump start cable	362
Securing child safety seats	295	Towing with a tow truck	363
LATCH system (lower anchorages and tethers for children)	298	Raising the vehicle	364
Additional information	303		

Table of contents

Customer information	366
Accessories and technical changes	366
Warranty	366
Audi Literature Shop	366
Driving in other countries	366
Maintenance, repairs, and technical modifications	366
Accessories and parts	368
Reporting Safety Defects	368
Declaration of compliance for telecommunications equipment and electronic systems	369
Technical data	371
Identification data	371
Vehicle data	371
Index	373

About this Owner's Manual

This Owner's Manual applies to all versions of this model. It contains important information, tips, suggestions, and warnings for using your vehicle.

Keep this manual in your vehicle at all times. This is especially important if you loan your vehicle to others or sell it.

This owner's manual describes the **equipment range** specified for this model at the time of printing. Individual equipment options described may only be available at a later date or may only be offered in certain countries.

Some sections in this manual do not apply to all vehicles. When this is the case, the beginning of the section indicates the **validity**, for example "Applies to: vehicles with cruise control system". Optional or vehicle-specific equipment is also identified with an asterisk "*".

The **illustrations** in this manual are a guide. Some of the details in your vehicle may differ from the illustration.

All **directions**, such as "left", "right", "front" and "rear", are based on the vehicle's direction of travel.

- * Optional or vehicle-specific equipment
- The section continues on the next page.

⇒ ⚠ Cross reference to a "WARNING" within a section. If a page number is indicated, the WARNING is located outside of the section.

WARNING

Text with this symbol contains information about safety and how to reduce the risk of serious personal injury or death.

Note

Text with this symbol contains information about reducing the risk of damage to your vehicle.

For the sake of the environment

Text with this symbol contains information on protecting the environment.

Tips

Text with this symbol contains additional useful information.

Telephone

Introduction

Applies to: vehicles with telephone

To make phone calls in your vehicle using the MMI, connect your cell phone to the MMI via Bluetooth.

Handsfree

After you have connected your mobile device to the MMI via Bluetooth, you can use the handsfree system and operate telephone functions through your MMI. You can make calls using the antenna on your mobile device.

With the Audi phone box*, calls are made using the exterior antenna on the vehicle. Using the external antenna helps when there is a low signal and also provides better reception quality ⇒ page 173.


WARNING

- Medical experts warn that mobile devices can interfere with the function of pacemakers. Always maintain a minimum distance of about 7.9 inches (20 cm) between the mobile device antenna and the pacemaker:
 - Do not carry the mobile device in a pocket directly over the pacemaker when the phone is switched on.
 - Switch the mobile device off immediately if you suspect it may be interfering with the pacemaker.
- Do not use the voice recognition system* ⇒ page 163 in emergencies because your voice may change in stressful situations. The system may take longer to dial the number or may not be able to dial it at all. Dial the emergency number manually.
- Switch your mobile device off in areas where there is a risk of an explosion. These locations are not always clearly marked. This may include gas stations, fuel and chemical storage facilities or transport vehicles, or locations where fuel vapors (such as propane or gasoline vapor in vehicles or buildings), chemicals or large quantities of dust particles (such as flour, sawdust or metal) may

be present in the air. This also applies to all other locations where you would normally turn your vehicle engine off.

- The demands of traffic require your full attention. Always read the chapter ⇒ page 144, *Traffic safety information*.

Note

Always follow the information found in ⇒  in *General information on page 185*.

Tips

- The Bluetooth connection range is limited to inside the vehicle. It can also be affected by local conditions and interference with other devices.
- To learn which Bluetooth connections and which of the functions in your mobile device are supported, check with your mobile device service provider or the database for mobile devices at www.audiusa.com/bluetooth.

Setup

Connecting a cell phone using Bluetooth

Applies to: vehicles with telephone

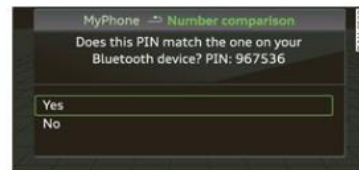


Fig. 172 Displaying the PIN for entering in the cell phone

Requirement

The vehicle must be stationary and the ignition must be switched on.

The Bluetooth settings must be open on your mobile device during the connection setup.

The Bluetooth function and visibility of the MMI ⇒ page 242 and mobile device must be switched on. ▶

The mobile device that will be connected must not be connected to any other Bluetooth device.

The MMI must not be connected to a mobile device.

Connecting a mobile device

- ▶ Select: **[MENU]** button > **Telephone** > **Connect mobile device** > **Find new devices** > **Next**. The available Bluetooth devices are shown in the Infotainment system display, or
- ▶ Select: **[MENU]** button > **Settings** > left control button > **MMI settings** > **Connection manager** ⇒ page 240.
- ▶ Select and confirm the desired cell phone from the list of displayed Bluetooth devices.
- ▶ The MMI generates a PIN for the connection setup ⇒ fig. 172.
- ▶ Select and confirm **Yes**.
- ▶ Enter the PIN for connecting on your cell phone, or
- ▶ when the PIN is displayed on your cell phone, confirm the PIN on your cell phone and in the MMI. The time allowed for entering the PIN is limited to approximately 30 seconds.
- ▶ Pay attention to any additional system prompts displayed on your cell phone, for example if the system should connect automatically in the future. Depending on the cell phone, you may have to confirm downloading the directory separately.

After connecting successfully


After connecting successfully, information about the connected profiles will appear. You can also change the profiles later:

- ▶ Select: **[MENU]** button > **Settings** > left control button > **MMI settings** > **Connection manager** ⇒ page 240.

In addition, the cell phone contacts are automatically loaded in the MMI directory. This process can take several minutes, depending on the number of contacts.

You can also make your connected cell phone the default phone by selecting **Set as default telephone** in the **Connection manager** ⇒ page 242.

Note

Always follow the information found in ⇒  in *General information on page 185*.

Tips

- Making phone calls through the MMI is only possible using the **Handsfree** Bluetooth profile.
- You can apply additional settings to connected mobile devices using the **Connection manager** ⇒ page 240.
- You can also search for the MMI on your mobile device using the Bluetooth device search.
- You only have to pair your device one time. Bluetooth devices that are already paired automatically connect to the MMI when the Bluetooth function is switched on, when they are within range, and when the ignition is switched on. The last connected mobile device is given first priority.
- Authorizing the MMI connection on your mobile device will make it possible to connect automatically.
- Pay attention to any system prompts displayed on your cell phone, for example if the system should connect automatically in the future. Depending on the cell phone, you may also need to download the directory and confirm access to your text messages separately.
- When leaving the vehicle, the Bluetooth connection to the mobile device will automatically disconnect. Depending on your mobile device, phone calls in progress may be automatically redirected from the MMI to your mobile device so that you can continue the call on your phone.
- You can obtain more information from your mobile device service provider or from your mobile device user guide. For information on using the telephone, visit www.audiusa.com/bluetooth or contact an authorized Audi dealer or authorized Audi Service Facility.
- Applies to: vehicles without secondary phone: Several mobile devices can be paired ▶

to the MMI, but only one mobile device can be actively connected.

- Applies to: vehicles without secondary phone: A Bluetooth device that is already paired with the MMI will be disconnected if another device is paired.

Operating two mobile devices through the MMI

You can connect two cell phones to the MMI, for example your business cell phone as the primary phone and your private cell phone as the secondary phone. You can be reached in your vehicle through both cell phones.

The first connected cell phone is displayed as the primary phone in the MMI. The second cell phone is connected as the secondary phone.

The directory from the connected primary phone will always be displayed. If you would like to use the directory from the secondary phone, you must switch the primary and secondary phone ⇒ page 172.

Connecting a cell phone as the primary phone

Connect your cell phone to the MMI via Bluetooth. The first connected cell phone is displayed as the **Primary phone** in the MMI.

See ⇒ page 170, *Connecting a cell phone using Bluetooth*.

Connecting a cell phone as the secondary phone

Requirement: a cell phone must be connected to the MMI as the primary phone.

Select: **[MENU]** button > **Telephone** > right control button > **Connect secondary telephone**.

See ⇒ page 170, *Connecting a cell phone using Bluetooth*.

Example: you have connected your business cell phone to the MMI as the primary phone and your private cell phone as the secondary phone. To be able to call contacts from your private cell phone directory, you must switch the primary and sec-

ondary phone, since the directory from the primary phone is always displayed.

Switching the primary and secondary phone

Requirement: a primary phone and a secondary phone must be connected.

Select: **[MENU]** button > **Telephone** > right control button > **Switch primary and second. phone**.

Tips

- Please note that only the directory from the primary phone is always displayed.
- You can see if a cell phone is connected as the primary phone or secondary phone in the **Connection manager** ⇒ page 240.
- The device name of the connected primary phone is shown in the **Telephone** menu (such as myPhone).
- If the primary phone does not connect automatically to the MMI when the ignition is switched on, for example because it is out of the vehicle range or the Bluetooth function is switched off, then a previously paired secondary phone is automatically connected as the primary phone.
- You can send and receive messages on your primary phone as well as on your secondary phone ⇒ page 174, fig. 174. You do not need to switch your primary phone and secondary phone for this.
- You can also make your connected cell phone the default phone by selecting **Set as default telephone** in the **Connection manager** ⇒ page 242.

Using the Audi phone box

Applies to: vehicles with Audi phone box



Fig. 173 Storage compartment under the center armrest: Principle of operation: Audi phone box with connections

You can charge your mobile device battery using the Audi phone box. You can make calls through the exterior antenna* on the vehicle. Using the external antenna* helps when there is a low signal and also provides better reception quality.

Requirement: a cell phone must be connected via Bluetooth ⇒ page 170.

The options below are available:

- **Connecting to the external vehicle antenna*:** Lay the cell phone with the display facing up on the cell phone symbol in the Audi phone box ⇒ fig. 173. Make sure there are no objects between the Audi phone box and the mobile device.
- **Charge a cell phone wirelessly:** Place a Qi-capable ¹⁾ cell phone centered on the Φ symbol in the Audi phone box with the display facing up ⇒ fig. 173. The cell phone will charge.
- **Charge a cell phone using the USB adapter:** Connect your cell phone to the Audi music interface using a USB adapter ①.

You can charge your mobile device using specific USB adapters ⇒ page 224, fig. 204.

WARNING

- Loose objects can be thrown around the vehicle interior during sudden driving or braking maneuvers, which increases the risk of

¹⁾ The Qi standard makes it possible to charge your mobile device wirelessly.

an accident. Store objects securely while driving.

- The mobile device may become hot during wireless charging. Pay attention to the temperature of your mobile device and be careful when removing it from the Audi phone box.
- An alternating magnetic field is used for wireless charging. Maintain a minimum distance of approximately 2.4 in (6 cm) to the Audi phone box charging plate. The thresholds for prolonged exposure at this distance comply with ICNIRP1998. Therefore, interactions such as irritation of sensory organs, malfunctions of active implants (such as pacemakers, infusion pumps, or neurostimulators) or effects on passive implants (such as prosthetic limbs) is highly unlikely. If you have an implant, consult a medical specialist if you have any questions.

Note

Applicable to U.S.A.

Operation of the Audi phone box is subject to the following requirements of the Federal Communications Commission:

- This is a CONSUMER device.
- BEFORE USE, you MUST REGISTER THIS DEVICE with your wireless provider and have your provider's consent. Most wireless providers consent to the use of signal boosters. Some providers may not consent to the use of this device on their network. If you are unsure, contact your service provider.
- You MUST operate this device with approved antennas and cables as specified by the manufacturer. Antennas MUST be installed at least 20 cm (8 inches) from any person.
- You MUST cease operating this device immediately if requested by the FCC or a licensed wireless service provider.
- WARNING: E911 location information may not be provided or may be inaccurate for calls served by using this device.

Note

Applicable to Canada

In Canada, operation of a Zone Enhancer, such as an Audi Phone Box, is subject to the following requirements of the Innovation, Science and Economic Development Canada (ISED):

- This is a CONSUMER device.
- BEFORE USE, you MUST meet all requirements set out in CPC-2-1-05.
- You MUST operate this device with approved antennas and cables as specified by the manufacturer. Antennas MUST NOT be installed within 20 cm of any person.
- You MUST cease operating this device immediately if requested by ISED or a licensed wireless service provider.
- **WARNING:** E911 location information may not be provided or may be inaccurate for calls served by using this device.

Tips

- The Audi phone box is not available in all countries. For additional information, contact an authorized Audi dealership.
- Placing the mobile device in a bag or protective sleeve inside the Audi phone box can interfere with the connection to the external antenna*.
- Metallic objects in the Audi phone box block the wireless charging of your mobile device and calls made using the exterior antenna*.
- The charging time and temperature will vary depending on the mobile device being used.
- Your mobile device can only be charged in the Audi phone box when the ignition is switched on.
- To reduce the risk of malfunctions, make sure the mobile device is positioned correctly in the Audi phone box.
- The maximum charging output is 5 watts.
- Strong transmission quality cannot be guaranteed if more than one mobile device is in the box.
- Only one mobile device at a time can be charged wirelessly in the Audi phone box.

- Audi recommends using Audi Genuine Accessories. Audi has verified their reliability, safety, and suitability.
- You can purchase a USB adapter from an authorized Audi dealer or authorized Audi Service Facility, or at specialty stores.

Using the telephone

Opening the telephone

Applies to: vehicles with telephone



Fig. 174 Example: telephone functions in selection menu



Fig. 175 Example: additional telephone functions in selection menu

Requirement: a mobile device must be connected to the MMI ⇒ page 170.

► Select: **[MENU]** button > **Telephone** > left control button.

The following phone functions are available ⇒ fig. 174/⇒ fig. 175:

1	Call list	175
2	Presets	177
3	Directory	180
4	Select number	175
5	Text message (MyPhone)*/Text message (secondary phone)*	177
6	E-mail (myPhone)*/E-mail (secondary phone)*	179 ►

The device name for your cell phone is displayed in the **Telephone** menu, for example text message (myPhone) ⇒ fig. 175.

Dialing a phone number

Applies to: vehicles with telephone



Fig. 176 Number speller



Fig. 177 Dialing a phone number from the call list

► Select: **[MENU]** button > **Telephone** > left control button.

Call list

Requirement: the call list must contain a phone number.

Turn the control knob to display the call list.

Select and confirm the desired telephone number from the recent calls list.

Call list symbols ⇒ fig. 177:

- 1 Missed calls
- 2 Dialed numbers
- 3 Received calls

Select: *a contact from the list* > right control button.

- **Call:** call the selected contact.
- **Connect secondary telephone*/Switch primary and second. phone*:** see ⇒ page 172.
- **Edit phone no. before call:** edit a phone number before dialing it. Select and confirm **OK** to

edit. press the left control button to return without editing.

- **Send text message:** write a text message to the selected contact.
- **Delete call list:** select and confirm if you would like to **Delete this entry** or **Delete all entries**.
- **Store as favorite:** store the selected contact as a favorite.
- **Show contact details:** see ⇒ page 181.
- **Connection manager:** see ⇒ page 240.
- **Bluetooth settings*:** See ⇒ page 242.
- **Online settings*:** See ⇒ page 242.
- **Wi-Fi settings*:** See ⇒ page 191.
- **Telephone settings:** see ⇒ page 182.

Favorites

Requirement: a phone number or contact must be stored as a favorite ⇒ page 177.

Select and confirm a favorite in the favorites list.

Directory

Requirement: you must have at least one contact stored in your cell phone.

Select and confirm a phone number from the directory ⇒ page 180.

Enter number

- **Entering a phone number as a sequence of numbers:** enter the number using the number speller ⇒ fig. 176.
- **Entering the phone number as a sequence of letters:** select and confirm **[ABC]** above the number speller. Enter a sequence of letters using the letter speller, for example **AUDISERVICE**.
- **Dialing a phone number:** select and confirm **☎**, or push the control knob downward. Select and confirm **OK**.
- **Deleting individual characters:** select and confirm **⌫**.
- **Deleting all characters entered at once:** turn the control knob with the character selection **⌫** and press and hold the control knob, or select: right control button > **Clear input field**.


Accepting or ending a call

Applies to: vehicles with telephone

- **Accepting a call:** select and confirm **Answer**.
- **Declining a call:** select and confirm **Decline**.
- **Muting an active call:** select and confirm **Mute**.
- **Ending a phone call/cancel dialing:** select and confirm **End call**.

Caller information: the *name, phone number* or **Unknown** appears in the Infotainment system display depending on if the caller has been stored in the directory and if the phone number has been transmitted. A picture may also be displayed, depending on whether you have assigned a picture to a contact in your directory and if it was transferred to your MMI. You can find out if your mobile device supports this function from your mobile device network provider, your mobile device owner's manual, or at www.audiusa.com/bluetooth.

i Tips

- The radio or media playback is muted during a phone call.
- Missed calls are displayed with a symbol in the status line of the Infotainment system display  ⇒ [page 154, fig. 165](#).

During a phone call

Applies to: vehicles with telephone

Requirement: there must be a call in progress.

- ▶ **End call:** you can end a phone call.
- ▶ **Send tone sequence:** you can enter tone sequences (DTMF) directly using the number speller and send to the other person on the call.
- ▶ **Other call options:** press the right control button.

The following options may be possible during a call depending on the mobile device being used and the type of connection:

- **Answering an additional call:** if there is an incoming call while another call is active, you can select **Answer** to put the existing call on hold and answer the incoming call. If you select **Decline**, the incoming call will be declined.

- **Accepting an incoming call when there is an active call and a call on hold:** select **Replace**. The active call is replaced with the incoming call.
- **Muting the incoming call:** select and confirm **Mute**.
- **Additional call:** select: **Find contact** > **Call list/Directory/Favorites** > *an entry from the list*.

Mute: if you select and confirm this function, the other person on the phone cannot hear you. You will still be able to hear the other person. To turn the microphone back on, select and confirm **Unmute**.

Hold call/Resume held call: you can place the existing call on hold and resume it again. To resume the call, select and confirm the call you would like to resume.

Transfer call to mobile device*: select and confirm **Transfer call to mobile device** to transfer the existing call from the MMI to your cell phone.

Switch to hands-free mode*: Requirement: you must have a phone call in progress on your cell phone. Select and confirm **Switch to hands-free mode** to transfer the call from your cell phone back to the MMI.

Swap call: alternate between two phone calls while one of the calls is on hold. Selecting **End call** will end the active phone call. A phone call on hold can be resumed using the right control button > **Resume**.

Connection manager: see ⇒ [page 240](#).

Telephone settings: see ⇒ [page 182](#).

i Tips

- To be notified of an incoming call during a phone call, the *call waiting* function in your mobile device must be switched on when using the **Handsfree** profile.
- You can obtain more information from your mobile device service provider or from your mobile device user guide.
- When leaving the vehicle, the Bluetooth connection to the mobile device will automatically disconnect. Depending on your mobile device, phone calls in progress may ▶

be automatically redirected from the MMI to your mobile device so that you can continue the call on your phone.

- The display of an incoming phone call in the Infotainment system display may still be visible for a few seconds after a call is answered or ignored depending on the cell phone in use.

Making an emergency call

Applies to: vehicles with telephone

- ▶ Select: **[MENU]** button > **Telephone** > left control button > **Dial number** > Enter emergency call number (for example, 911) > **OK**.

⚠ WARNING

- Because your phone works with radio signals, a connection cannot be guaranteed under all circumstances. Do not rely on only your phone when it comes to essential communication (such as a medical emergency).
- Always follow the instructions given by the emergency personnel during an emergency call and only end the call when they instruct you to do so.

i Tips

Emergency numbers are not the same everywhere. Find out which emergency number is used in your current location.

Favorites

Applies to: vehicles with telephone

Up to 50 contacts, in addition to the voicemail number, can be stored in any order in the favorites list:

- ▶ Select: **[MENU]** button > **Telephone** > left control button.

Storing an existing phone number as a favorite:

- Select and confirm **Call list/Directory**.
- Select a contact or phone number from the list.
- Select: right control button > **Store as favorite**.
- Enter a name for the favorite or select a suggestion.

- Select and confirm **Save**.

Renaming stored favorites

- Select: **Favorites** > *a favorite from the list*.
- Select the right control button > **Rename favorite**.

Moving stored favorites

- Select: **Favorites** > *a favorite from the list*.
- Select the right control button > **Move favorite**.
- Select and confirm the location of the selected favorite.

Deleting a stored favorite

- Select: **Favorites** > *a favorite from the list*.
- Select: right control button > **Delete favorite** > **Delete this entry** or **Delete all entries**.

Messages**Text messages**

Applies to: cell phones with Bluetooth Message Access Profile (MAP)

Depending on the mobile device being used and the mobile network contract, you may be able to receive and send text messages using the MMI.

Requirement: A cell phone must be connected to the MMI via Bluetooth MAP (Message Access Profile) ⇒ [page 170](#).

- ▶ Select: **[MENU]** button > **Telephone** > left control button > **text message (myPhone)/text message (secondary phone)***.

Write new text message

Select and confirm **Write new text message**.

- **Using a template:** select and confirm the desired template from the list.
- **Writing your own text*:** select and confirm **Do not use template**. Enter text using the MMI touch control pad* or the letter speller.
- Enter one or more recipients.
- Select and confirm **Send**.

Inbox

Displays all received text messages. ▶

Sent

Displays all sent text messages.

Outbox

Displays all text messages to be sent.

Drafts

Displays all text messages that have not yet been sent and stored text messages.

Deleted

Displays all deleted text messages.

i Tips

- Please note that you may have to activate the receiving and sending of text messages depending on the SIM card being used in your cell phone (for example, when using a multi-SIM). You can obtain more information from your mobile device service provider or from your mobile device user guide.
- For more information on supported mobile devices, visit www.audiusa.com/bluetooth or contact an authorized Audi dealer or authorized Audi Service Facility.
- You need a mobile device with Message Access Profile that also supports the sending function to be able to send text messages through the MMI.

Message options

Applies to: cell phones with Bluetooth Message Access Profile (MAP)

- ▶ Select: **[TEL]** button > left control button > **text message (myPhone)/text message (secondary phone)*** > **Inbox/Sent/Outbox** > right control button.

The following options may be available depending on the selected menu.

Storing a text message as a template

Ten text message templates are stored in the MMI. You can save up to 10 additional templates of your own.

- Create a text message.
- Select and confirm **Store as template**.

Resume last text message

The last edited text message can be resumed.

Reply*

A reply can be sent for the selected message in the **Inbox**.

Forward

The selected text message can be forwarded to a different recipient.

Send again*

The selected text message can be resent.


Delete this text message*

The selected text message can be deleted.

Read out¹⁾

You can have the MMI read an open text message.

Text messaging settings*

To display when a new text message is received, enable the **Text message notifications**. New text messages are indicated with an envelope  in the Infotainment system display status line.

Connection manager

See ⇨ [page 240](#).

Bluetooth settings*

See ⇨ [page 242](#).

Online settings*

See ⇨ [page 242](#).

Wi-Fi settings*

See ⇨ [page 191](#).

Telephone settings

See ⇨ [page 182](#).

¹⁾ Not available in all languages.

i Tips

Messages that are deleted in the MMI are also deleted in the mobile device automatically.

E-mail*

Applies to: cell phones with Bluetooth Message Access Profile (MAP)

Depending on the type of mobile device being used, you may be able to receive and send e-mails through the MMI.

Requirement: a cell phone must be connected to the MMI via Bluetooth MAP (Message Access Profile) ⇨ [page 170](#). You can find out if your mobile device supports this function by checking your mobile device owner's manual.

- ▶ Select: **[MENU]** button > **Telephone** > left control button > **e-mail (myPhone)/e-mail (secondary phone)***.

Write new e-mail

Select and confirm **Write new e-mail**.

- **Using a template:** select and confirm the *desired template from the list*.
- **Writing your own text¹⁾:** select and confirm **Do not use template**. Enter text using the MMI touch control pad* or the letter speller.
- Enter one or more recipients.
- Select and confirm **Send**.

Inbox

All received e-mails are displayed.

Sent

All sent e-mails are displayed.

Outbox

All e-mails that will be sent are displayed.

Drafts

All saved e-mails that have not been sent yet are displayed.

! Note

Always follow the information found in ⇨ **i** in *General information on page 185*.

i Tips

- For more information on supported mobile devices, visit www.audiusa.com/bluetooth or contact an authorized Audi dealer or authorized Audi Service Facility.
- To ensure that your sent e-mails are received, connect your cell phone to the Wi-Fi hotspot* in the vehicle so that the e-mail app on your cell phone continues to have Internet access. If you are still not receiving e-mails even though you have a successful connection, then contact your e-mail service provider or your cell phone service provider.

Message options

Applies to: cell phones with Bluetooth Message Access Profile (MAP)

- ▶ Select: **[MENU]** button > **Telephone** > left control button > **e-mail (myPhone)/e-mail (secondary phone)*** > **Inbox/Sent/Outbox** > right control button.

The following options may be available depending on the selected menu.

Store as template

Ten e-mail templates are stored in the MMI. You can save up to 10 additional templates of your own.

- Create an e-mail.
- Select and confirm **Store as template**.

Resume last edited e-mail

The last e-mail in progress can be resumed.

Reply*

A reply can be sent for the selected e-mail in the **Inbox**.

Reply to all*

A reply can be sent for the selected e-mail in the **Inbox** and it will be sent to all of the entered recipients.

Forward

The selected e-mail can be forwarded to a different recipient.

Delete this message*

The selected e-mail can be deleted.

Read out¹⁾

You can have the MMI read an open e-mail.

E-mail settings*

To display when a new e-mail is received, activate the **E-mail notifications**. New e-mails are indicated with an envelope icon in the Infotainment system display status line.

Connection manager

See ⇨ page 240.

Bluetooth settings*

See ⇨ page 242.

Online settings*

See ⇨ page 242.

Wi-Fi settings*

See ⇨ page 191.

Telephone settings

See ⇨ page 182.

i Tips

- Messages that are deleted in the MMI are also automatically deleted in the connected cell phone.
- You cannot read any messages while driving.

Listening to voicemail

Applies to: vehicles with telephone

- ▶ Select: **[MENU]** button > **Telephone** > left control button. Select and confirm **Call list/Directory/Favorites** > **Voicemail**.

Requirement: there must be no voicemail number stored.

- **Entering the voicemail number:** enter the desired number. Select and confirm **OK**.

¹⁾ Not available in all languages.

Requirement: a voicemail number must be stored.

- **Dialing the voicemail number:** select and confirm **Voicemail**.

i Tips

- This service must be set up and activated in advance by the cell phone service provider. You can obtain more information from your cell phone service provider.
- The voicemail number depends on the cell phone service provider.

Directory**Opening the directory**

Applies to: vehicles with telephone



Fig. 178 Directory

After connecting the cell phone, the contacts in it are automatically imported into the MMI.

Requirement: you must have at least one contact stored in your cell phone.

- ▶ Select: **[MENU]** button > **Telephone** > left control button > **Directory**.
- **Calling a contact:** select and confirm a contact from the directory. The phone numbers for the selected contact are displayed. To make the call, select and confirm a phone number.
- **Free text search for a contact:** see ⇨ page 153.

Contacts are displayed in alphabetical order and can be sorted by first or last name ⇨ page 183, **Sort order**.

The directory can be opened through the **Telephone** menu as well as through the **Navigation** menu.

i Tips

- Additional information on free text searches can be found under ⇨ page 153.
- Check for a possible request to synchronize on your cell phone. Requests to synchronize the directory must be confirmed so that your cell phone contacts can be loaded into the MMI.
- The contact display in the MMI depends on the mobile device being used. For more information on supported mobile devices, visit www.audiusa.com/bluetooth or contact an authorized Audi dealer or authorized Audi Service Facility.
- Please note that only the directory from the primary phone* is always displayed.
- The contacts from the mobile device may not be transferred in alphabetical order. If there are too many entries, contacts with different first letters may be missing in the MMI.
- The contacts in the local MMI memory are always visible and can be accessed by other users.

Free text search for a contact

Applies to: vehicles with telephone

- ▶ Select: **[MENU]** button > **Telephone** > left control button > **Directory**.
- ▶ To limit the search, enter the initials of the contact being searched with each initial separated by a space in the input field. Enter additional letters if necessary.
- ▶ Select and confirm a contact from the directory. The phone numbers for the selected contact are displayed.
- ▶ To make the call, select and confirm a phone number.

i Tips

- You can scroll through long lists quickly by turning the control knob quickly. The scrolling speed depends on the number of list entries.
- Additional information on free text searches can be found under ⇨ page 153.

Showing contact details*

Applies to: vehicles with telephone

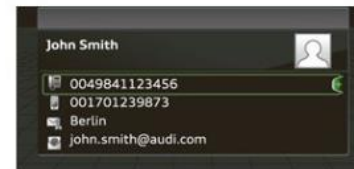


Fig. 179 Principle of operation: Showing contact details

You may be able to show contact details depending on the vehicle equipment:

- ▶ Select: **[MENU]** button > **Telephone** > left control button.
- ▶ Select and confirm **Directory** > a contact from the directory.
- ▶ Select: right control button > **Show contact details**.

- **Calling:** select and confirm the desired telephone number.
- **Navigating:** to start navigation, select and confirm the desired address. Select and confirm **Start route guidance**.

Press the right control button to open additional options for the contact details.

- **Add destination:** To start navigation, select and confirm the desired address. Select and confirm **Start route guidance**.
- **Store as favorite:** See ⇨ page 177.
- **Send text message*:** You can send a text message to the selected contact ⇨ page 177.
- **Delete contact:** The selected contact can be deleted.

i Tips

- Contacts edited in the MMI directory cannot be automatically updated in the connected cell phone. Audi recommends editing cell phone contacts directly in the cell phone.
- Only the contacts in the local MMI memory can be edited or deleted.

Importing and exporting contacts

Applies to: vehicles with telephone

Contacts in vCard format (.vcf) can be imported into the directory or exported.

Requirement: an SD card must be inserted in one of the SD card readers* ⇨ [page 219](#) or a USB storage device must be connected to the Audi music interface* ⇨ [page 224](#) or the requirements for Audi connect Infotainment services* must be met ⇨ [page 185](#).

- ▶ Select: **[MENU]** button > **Telephone** > left control button > **Directory**.
- ▶ Select: right control button > **Contact settings**.

- **Importing contacts from a storage device:** select and confirm **Import contacts > SD card 1/SD card 2 or USB device 1/USB device 2 > desired contacts > Start import**.
- **Exporting contacts to a storage device:** select and confirm **Export contacts > SD card 1/SD card 2 or USB device 1/USB device 2 > desired contacts > Start export**.
- **Selecting all contacts at once to import/export:** select and confirm **Import contacts/Export contacts > SD card 1/SD card 2 or USB device 1/USB device 2 > All > Start import/Start export**.

i Tips

- Always read the chapter ⇨ [page 185](#), *Audi connect*.
- For additional information on the myAudi account, visit www.audiusa.com/myaudi.
- The imported contacts are stored in the local memory of the directory.
- A maximum of 1,000 contacts can be imported. You can check the directory memory capacity at any time ⇨ [page 183](#).
- Never save important data on memory cards or USB storage devices. Audi is not responsible for damaged or lost files and media.
- Contacts that were downloaded from a mobile device cannot be exported.

- There should be no other files or folders on the storage medium containing the contacts to be imported.

Additional settings**Telephone settings**

Applies to: vehicles with telephone

- ▶ Select: **[MENU]** button > **Telephone** > right control button > **Telephone settings**.

Call options*

Call forwarding: you can switch the forwarding of incoming calls to your voicemail or to another phone number on and off. You can check if the function is activated or deactivated with **Check status**.

Call waiting: you are alerted to an incoming call during a phone call when the function is switched on . You can check if the function is activated or deactivated with **Check status**.

Send own telephone number: sending your phone number with an outgoing call can be activated and deactivated. With the **Network-dependent** setting, the setting listed in the contract with the cell phone service provider is used. The settings only apply to the **Telephone** menu in the MMI. Please note that the settings on your mobile device will apply after disconnecting the Bluetooth connection. You can check if the function is activated or deactivated with **Check status**.

Ringtone and volume settings¹⁾

Using the **Mute telephone** function, you can switch the ringtone playback through the MMI speaker on and off. You can play the ringtones using the **Ringtone** function. Select and confirm an entry from the list. For the **Ringtone volume/Message volume** settings, see ⇨ [page 244](#). The **Microphone input level** can be adjusted during a phone call using the control knob. ▶

¹⁾ Depends on the connected cell phone.

i Tips

- Several mobile devices can be paired with the MMI, but only two* mobile devices can be actively connected.
- To delete all paired Bluetooth devices, the **Bluetooth** function can be reset to the factory default settings ⇨ [page 240](#).

Additional options

- ▶ Select: **[MENU]** button > **Telephone** > right control button.
- **Connection manager:** See ⇨ [page 240](#).
- **Bluetooth settings*:** See ⇨ [page 242](#).
- **Online settings*:** See ⇨ [page 242](#).
- **Wi-Fi settings*:** See ⇨ [page 191](#).

Directory settings

Applies to: vehicles with telephone

- ▶ Select: **[MENU]** button > **Telephone** > left control button > **Directory** > right control button > **Contact settings**.

Memory capacityShows the **Memory capacity** for the directory.**Troubleshooting**

Applies to: vehicles with telephone

Problem	Solution
Pairing the cell phone to the MMI failed.	Make sure the requirements for connecting a cell phone have been met ⇨ page 170 , or make sure you did not accidentally decline the PIN for establishing a connection on your cell phone. If necessary, repeat the pairing process ⇨ page 170 .
After pairing, not all contacts or no contacts have been loaded into the MMI.	Avoid using special characters in names. Avoid using contact groups on your cell phone. ▶

You can manage up to 17,000 contacts with the directory. You can load up to 4,000 contacts from your cell phone into each directory. You can also import up to 1,000 contacts from a storage device.

Sort order

You can sort the contacts in your directory alphabetically according to **Last name** or **First name**.

Import contacts/Export contactsSee ⇨ [page 182](#).**Download directory**

To update the contacts in the MMI, you can manually download your mobile device contacts. Depending on the mobile device, you may need to disconnect and reconnect the Bluetooth connection to update the contacts.

Hide contacts without phone number

When this function is switched on, grayed-out contacts that have no phone numbers stored for them will be hidden in the directory.

Problem	Solution
Certain telephone functions are grayed out or not available.	The telephone functions depend on the mobile device service provider and the mobile device you are using. You can obtain more information from your cell phone service provider, in your cell phone user guide or in the database for mobile devices at www.audiusa.com/bluetooth .
Some telephone functions may be switched off or not available, even though the mobile device is supported.	On corporate phones, some Bluetooth settings may not be compatible or the cell phone Bluetooth function may be deactivated. You can obtain more information from your system administrator.

Audi connect

General information

Depending on the country and the vehicle equipment, the following functions may be available:

- Audi connect Infotainment
- Audi connect vehicle control

You can also find more information on Audi connect online at www.audiusa.com.

WARNING

- To reduce the risk of an accident, only use Audi connect services when road and traffic conditions permit. Always read and follow the notes in \Rightarrow page 144, *Traffic safety information*.
- It is only safe to use tablets, laptops, mobile devices and other similar devices when the vehicle is stationary because, like all loose objects, they could be thrown around the inside of the vehicle in a crash and cause serious injuries. Store these types of devices securely while driving.
- As the driver, do not allow usage of the Wi-Fi hotspot to distract you from driving, as this could increase the risk of an accident.
- Do not use any wireless devices on the front seats within range of the airbags while driving. Also read the warnings in the chapter \Rightarrow page 264, *Front airbags*.
- To reduce the risk of an accident, use the Audi connect Infotainment services with a Wi-Fi hotspot only in the rear seat when the vehicle is in motion, or only when the vehicle is stationary.

Note

- Applies to: embedded SIM card usage: The connection costs of Audi connect Infotainment services are included in the price of Audi connect Infotainment during the subscription period with some exceptions. Please note that there may be additional charges when using some services. For example, this applies to Internet radio/podcasts or for Internet connections and

services that use the Wi-Fi hotspot, such as online media sources. Depending on the country, data plans may need to be purchased for these services \Rightarrow page 192. For additional information, see www.audiusa.com/myaudi.

- In certain situations, the Wi-Fi hotspot data connection may be established as a replacement for the SIM card on your Wi-Fi device. This feature depends on the configuration of your Wi-Fi device and operating system. This could result in fees depending on your cell phone service provider, especially if you are using this feature while abroad. A flat rate data plan is strongly recommended. For more information, contact your cell phone service provider or refer to the owner's manual for your Wi-Fi device.
- You are responsible for all precautions taken for data protection, anti-virus protection, and protection against loss of data on mobile devices that are used, for example, to access the Internet through the Wi-Fi hotspot.

Tips

- The availability of services depends on the subscription.
- AUDI AG provides access to services from third party providers. Permanent availability cannot be guaranteed, because that depends on the third party provider.
- Use of the most up-to-date mobile network standard is not available in every country. Contact an authorized Audi dealer or authorized Audi Service Facility or your cell phone service provider for additional information.
- Audi connect Infotainment services are only available within the cell phone network coverage from your cell phone service provider.
- Availability, scope, providers, screen display, and costs of services may vary depending on the country, model, model year, end device and rates.

Audi connect Infotainment

Description

Applies to: vehicles with Audi connect Infotainment

With Audi connect Infotainment services, online information is transmitted directly to the vehicle.


An Internet connection is required to use Audi connect Infotainment. Depending on the country and the vehicle equipment, the following options may be available:

– Embedded SIM card

WARNING

Always follow the information found in  in *General information on page 185*.

Note

Always follow the information found in  in *General information on page 185*.

Embedded SIM card

Applies to: vehicles with Audi connect Infotainment and an embedded SIM card


The data connection for Audi connect Infotainment services is made through an embedded SIM card (eSIM card) that is installed in the vehicle. You can use the Audi connect Infotainment services immediately.

Note

Always follow the information found in  in *General information on page 185*.

Using a Wi-Fi hotspot

Applies to: vehicles with Wi-Fi hotspot

You can connect up to eight Wi-Fi devices (such as smartphones) with the MMI Wi-Fi hotspot. If the MMI is connected to the Internet  *page 186*, the connected Wi-Fi devices can also use the MMI's Internet connection.

Requirement: the ignition must be switched on.

- ▶ Select: **[MENU]** button > **Telephone** > right control button > **Wi-Fi settings** > **Wi-Fi**. Switch on the Wi-Fi hotspot.
- ▶ Select: **[MENU]** button > **Telephone** > right control button > **Wi-Fi settings** > **Network key**. The access data for the Wi-Fi hotspot is displayed. Switch on the visibility of the Wi-Fi hotspot if necessary.
- ▶ Switch the Wi-Fi function on in your mobile device and connect it to the MMI Wi-Fi hotspot using the authentication data that is shown.
- ▶ Follow any additional system prompts on your Wi-Fi device if necessary.

Your device is successfully connected with the MMI's Wi-Fi hotspot.

WARNING

Always follow the information found in  in *General information on page 185*.


Note

Always follow the information found in  in *General information on page 185*.

Audi connect Infotainment services

Configuration

Applies to: vehicles with Audi connect Infotainment

Requirement: your vehicle must be connected to the Internet  *page 186*.

Some Audi connect Infotainment services must be configured through your personal myAudi account before using them for the first time.

- ▶ Register at www.audiusa.com/myaudi.
- ▶ Add your vehicle to your myAudi account.
- ▶ Select: **[MENU]** button > **Audi connect** > right control button > **Log in**.
- ▶ Log in to myAudi in the vehicle using your e-mail address and password.

Tips

– For some Audi connect Infotainment services, you may also have to enter your myAudi access information when accessing services in the MMI.

- Some Audi connect Infotainment services must be activated at www.audiusa.com/myaudi.
- Regardless of the key user and additional users, you can only connect one myAudi account to your vehicle.
- To make logging in easier in the vehicle, you will receive an 8-digit myAudi PIN as an alternative to your myAudi password after you have created a myAudi account.
- For detailed information on configuration, visit www.audiusa.com/myaudi.

Accessing Audi connect Infotainment

Applies to: vehicles with Audi connect Infotainment

- ▶ Select: the **[MENU]** button > **Audi connect**.

A list of all of the available Audi connect Infotainment services is shown on the Infotainment system display.

You can also filter the Audi connect Infotainment services by category:

- ▶ Select: **[MENU]** button > **Audi connect** > left control button > for example, **Navigation** for the Audi connect Infotainment services in the navigation menu.

Basic functions

Applies to: vehicles with Audi connect Infotainment

- ▶ Select: **[MENU]** button > **Audi connect** > *desired Audi connect Infotainment service* > right control button.

Depending on the equipment and the Audi connect Infotainment service selected, the following basic functions may be available:

Save as preview

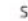
You can also see a preview of the selected Audi connect Infotainment services on the Audi connect Infotainment home page.

Show on map

You can show selected contents on the map and use them for route guidance.

¹⁾ Not available in all languages.

Log in

See  *page 186*.

Read out¹⁾

You can allow the MMI to read out the selected contents.

Call

If a phone number was assigned to an entry, you can call the number, for example to reserve tickets.


Refresh

The contents for the selected Audi connect Infotainment service are refreshed.

Start route guidance

If a location was saved with an entry, you can use it as the navigation destination. Route guidance starts immediately.

Change search area

The set search area can be changed at any time. Additional information on search areas can be found under  *page 199*.

Closing Audi connect Infotainment services

Regardless of the function selected, you can close an Audi connect Infotainment service at any time and return to the home screen.

Services

Applies to: vehicles with Audi connect Infotainment

Depending on the country and the vehicle equipment, the following services may be available:

Weather

Information on current weather conditions as well as weather forecasts for the selected search area.

- ▶ Select and confirm **Weather**.

News

- ▶ Select: **Online news** > *desired newsfeed* > *a headline*.

If you logged in to myAudi in your vehicle ⇒ page 186, personalized newsfeeds can be displayed.

Twitter

Requirement: You must have connected your vehicle with myAudi ⇒ page 186. You must have connected your myAudi account with Twitter.

You can only connect one Twitter account with your myAudi account. Not all settings can be adjusted in the MMI. Some can only be adjusted through the Twitter website.

- ▶ Select: **Twitter** > left control button > *desired function* (for example, **Trends**).

⚠ WARNING

Always follow the information found in ⇒ ⚠ in *General information on page 185*.

📌 Note

Always follow the information found in ⇒ 📌 in *General information on page 185*.

Additional options

Applies to: vehicles with Audi connect Infotainment

- ▶ Select: **MENU** button > **Audi connect** > right control button.

Depending on the equipment and the country, the following options may be available in the overview of Audi connect Infotainment services:

About Audi connect

Here you will find legal information regarding Audi connect Infotainment usage.

Log in

See ⇒ page 186.

Connection manager

See ⇒ page 240.

License subscription

The validity and expiration date of your licenses are displayed.

Refresh

The content of the selected Audi connect Infotainment service or the entire Audi connect Infotainment list is updated.

Data privacy

Requirement: the ignition must be switched on.

Location, vehicle, and personal data are transmitted when using Audi connect services.

Allowing sending of data

- Select and confirm **Activate data connection**. The data module for the use of all Audi connect services will be active.

Restricting sending of data

- Select and confirm **Activate privacy**. The data connection is limited or deactivated depending on the equipment. The majority of Audi connect services will not be available.

The following interfaces are not affected by this setting: Bluetooth, Bluetooth Low Energy (BLE), Wi-Fi connection, Audi smartphone interface (ASI), Near Field Communication (NFC), charging communication (e-tron), Electronic Toll Collect (ETC), if equipped.

📌 Note

Always follow the information found in ⇒ 📌 in *General information on page 185*.

📌 Tips

- If the transmission of data is limited, data will still be transmitted to verify subscriptions.
- If the transmission of data is limited, it will have the following effects on the exchange of data for Audi connect services and emergency calls, if equipped:
 - The emergency call function will remain available without restrictions and will continue to transmit data.
 - If an online roadside assistance call is initiated, no data will be transmitted, but a call will be made.

– If the Geofencing Alert, Speed Alert, and/or Valet Alert services have been activated by the key user, then they will remain available without restrictions and continue to transmit data.

Audi connect vehicle control services

Description

Applies to: vehicles with Audi connect vehicle control

With Audi connect vehicle control services ¹⁾, you can utilize various services using the myAudi app or online at www.audiusa.com/myaudi.

⚠ WARNING

Always follow the information found in ⇒ ⚠ in *General information on page 185*.

📌 Tips

- Accessing specific data or controlling functions remotely depends on the charge level of the vehicle battery. Therefore, these functions only have limited availability after switching off the ignition.
- An eSIM card establishes the Internet connection for Audi connect vehicle control services. The costs for this are included in the price of Audi connect vehicle control services. The cell phone network, for example, must be available to use these services.

Setup

Applies to: vehicles with Audi connect vehicle control

For some Audi connect vehicle control services, the vehicle owner must be set up as the key user.

Set key user

Requirement: a key user must not be set yet. The ignition must be switched on.

- ▶ To set a key user for the vehicle, you will need a myAudi account. Register at www.audiusa.com/myaudi.

¹⁾ Depends on the country and equipment. These services are available for a limited time.

- ▶ Link your vehicle to the account at www.audiusa.com/myaudi and then verify your myAudi account immediately in order to use the Audi connect vehicle control services.
- ▶ You can also verify your myAudi account later. Log in at www.audiusa.com/myaudi with your access information and verify your myAudi account in user management using the verification process that is given.
- ▶ Select: **MENU** button > **Audi connect** > if necessary, **Display available functions** > right control button > **Audi connect user management** > **Key user** > **Set key user**.
- ▶ Enter your myAudi user name and the 10-digit vehicle code ⇒ page 29. The key user is set. You have the rights to use the Audi connect vehicle control services ⇒ page 190 as well as the ability to manage other vehicle functions and any other users.

Resetting the primary user

If you remove the key user, all other users and their authorizations will be deleted. It will no longer be possible to use the Audi connect vehicle control services.

Requirement: a key user must be set. The ignition must be switched on.

- Select: **MENU** button > **Audi connect** > right control button > **Audi connect user management** > **Key user** > **Reset key user**.

Using the myAudi app

- ▶ Install the myAudi app on your mobile device and log in with your access information.

📌 Tips

- If you sell your vehicle, reset the key user and restore all settings to the factory default settings ⇒ page 240.
- It may also be necessary to enter your 4-digit myAudi PIN when accessing some Audi connect vehicle control services.

- Store the vehicle code in a secure place. It may be necessary to re-enter the vehicle code.
- Pay attention to upper- and lower-case letters when entering the vehicle code.
- If you do not have the 10-digit vehicle code, contact an authorized Audi dealer or authorized Audi Service Facility.

Additional options

Applies to: vehicles with Audi connect vehicle control

License subscription

The validity and expiration date of your subscriptions are displayed. When this function is activated, you will be notified before your subscription expires.

Select: **[MENU]** button > **Audi connect** > **Display available functions** > right control button > **License subscription**.

Warning levels

Requirement: the primary user must have set one or more warning levels. Secondary users can only see if a warning level is active or not.

Select: **[MENU]** button > **Audi connect** > right control button > **Alerts**.

Services

Applies to: vehicles with Audi connect vehicle control

Depending on the country and the vehicle equipment, the following services may be available:

Remote locking and unlocking

Requirement: the vehicle must be parking and the ignition must be switched off.

This service allows you to unlock or lock your vehicle.

Vehicle status report

This service transfers driver information system data to a server. Depending on the vehicle equipment, certain data may be accessed, such as the remaining range or mileage. The values may differ from the values displayed in the vehicle.

Car Finder

This service transmits the parking location to a server when the ignition is switched off. The vehicle location, your location, or the route to your vehicle can be displayed. The new parking location cannot be determined with this service if the vehicle is moved after shutting the vehicle off and without switching the ignition on and off again, for example if the vehicle is towed or stolen.

– **Deactivating and activating the parking position:** Select: **[MENU]** > **Audi connect** > **Car finder**.

Online Audi service request

Requirement: the service must be activated online at www.audiusa.com/myaudi and an authorized Audi dealer or authorized Audi service facility must be selected.

This service transmits service-relevant data to your selected authorized Audi dealer or authorized Audi service facility. They will contact you before your next service appointment.

Stolen Vehicle Locator

This service assists you in locating your vehicle if it is stolen.

- Contact the police. You receive a Case ID.
- Call the service hotline and give your Case ID.

The service hotline will forward the established data to the police. You receive the Audi Service hotline number when you purchase your vehicle.

Geofencing Alert

Requirement: a key user must be set in the vehicle ⇒ [page 189](#).

This service allows you to set permitted and forbidden zones for your vehicle as well as set time limits for these zones. If your vehicle leaves a permitted zone or enters a forbidden zone, you will be notified with a push notification and/or an e-mail.

Speed Alert

Requirement: a key user must be set in the vehicle ⇒ [page 189](#).

You can set up to two speed limits for your vehicle using this service. If your vehicle exceeds a set speed limit, you will be notified with a push notification and/or e-mail.

Valet Alert

Requirement: a key user must be set in the vehicle ⇒ [page 189](#).

If you give your vehicle to a parking service, you can set a zone and a speed limit using the myAudi app. If the vehicle leaves the zone or exceeds the speed limit, you will be notified with a push notification and/or e-mail.

WARNING

Do not ignore messages and warning or indicator lights that turn on in the vehicle because of the information in the vehicle status report. This could lead to break downs in on the road, accidents and serious injuries.

Tips

For some services, you can select if you would like to be notified with a push notification and/or an e-mail.

Settings

Cell phone network

- ▶ Select: **[MENU]** button > **Audi connect** > right control button > **Connection manager**.
- ▶ Select: right control button > **Online settings** > **Data connection settings**.

Depending on the country, vehicle equipment, and connection type, the following functions may be available:

Data connection settings

Using the **Data connection settings** menu, you can set when the system should connect to the Internet. The Internet connection disconnects automatically once the requested Audi connect Infotainment service no longer requires any data.

– **Connection setup:** you can select when a data connection should be established.

- **Audi connect (MMI):** when this function is switched on, a data connection is automatically established in order to use Audi connect Infotainment services.
- **Wi-Fi devices:** when this function is switched on, you can allow or deny Internet connections.

WARNING

Always follow the information found in ⇒ **⚠** in *General information on page 185*.

Note

Always follow the information found in ⇒ **📌** in *General information on page 185*.

Tips

For more information on roaming charges, contact your cell phone service provider.

Wi-Fi settings

Applies to: vehicles with Wi-Fi hotspot

Requirement: the ignition must be switched on.

- ▶ Select: **[MENU]** button > **Telephone** > right control button > **Wi-Fi settings**.

Depending on the country and the vehicle equipment, the following functions may be available:

Wi-Fi

When the function is switched on, the MMI's Wi-Fi hotspot is active and Wi-Fi devices can be connected to the hotspot.

Network key

The Wi-Fi connection between the MMI and your Wi-Fi device is encrypted. You can change the following information if needed.

- **Access point (SSID):** Wi-Fi hotspot name.
- **Password:** a random password was set in the MMI at the factory. The password can be changed. The encryption method requires a password to be at least eight characters long. Choose a secure password.
- **Visible to others:** you can switch the visibility of the Wi-Fi hotspot on or off. ▶

WARNING

Always follow the information found in ⇒ ⚠ in *General information on page 185.*

Note

Always follow the information found in ⇒ ⓘ in *General information on page 185.*

Tips

In vehicles without Audi connect Infotainment, the use of the Wi-Fi hotspot is only possible for the Wi-Fi audio player*. A data connection to the Internet cannot be established.

Data plans¹⁾

Applies to: vehicles with data plans

Requirement: You must have a registered myAudi account at www.audiusa.com/myaudi. Your vehicle must be registered in your myAudi account.

You can purchase data plans at www.audiusa.com/myaudi.

WARNING

Always follow the information found in ⇒ ⚠ in *General information on page 185.*

Note

Always follow the information found in ⇒ ⓘ in *General information on page 185.*

Tips

- Please note that any vehicle passenger can delete the SIM owner.
- The associated vehicle is not automatically deleted from the customer portal for the cell phone service provider when you delete the SIM owner in the vehicle. If selling your vehicle, you should delete the vehicle from the customer portal for the cell phone serv-

ice provider to avoid being charged for additional purchases.

Data Privacy

Applies to: vehicles with Audi connect Infotainment

AUDI AG collects, uses, stores and shares your personal information, such as contact data, vehicle data, usage data, driving data and precise geolocation, in order to provide you with the products and services you have purchased or requested, and for a number of other purposes, for example, to track quality issues, to performance and safety, to meet our internal compliance or legal requirements and to market to customers and potential customers. For a more complete list of the data we collect, how we use it and with whom we share it, please visit your Audi national/sales region website at www.audi.com.

The collection, use and sharing may vary depending on your model and model year, your subscription status, or the service offering. For example, collection, use and sharing may vary between Audi connect services, if you have designated a key user, or if you are driving a model equipped with persistent data logging. Please review the complete Privacy Statement to understand our data handling practices with respect to a particular service.

You can find additional information about our data privacy practices in your MMI.

- ▶ Select: **[MENU]** button > **Audi connect** > right control button > **About Audi connect**.

Information about our privacy practices in conjunction with the mobile Audi connect application can be found in the Application's Privacy Statement.

For additional information about the privacy practices relating to Audi connect, myAudi, or other websites, applications or online services as well as your obligations with respect to using these services, and for additional information regarding Audi connect terms and conditions, ▶

please visit your Audi national/sales region website at www.audi.com.

Troubleshooting

Applies to: vehicles with Audi connect Infotainment

The information that follows lists some troubleshooting options. They depend on the equipment.

Problem	Solution
Audi connect Infotainment services: individual Audi connect Infotainment services are grayed out or not available.	Some Audi connect Infotainment services must be activated or configured through your personal myAudi account before using them for the first time. You can find detailed information online at www.audiusa.com/myaudi .
Wi-Fi hotspot: it is not possible to connect through Wi-Fi.	Check if Wi-Fi is activated in the MMI ⇒ <i>page 191</i> . Delete all existing Wi-Fi connections on your mobile device and restart it.

¹⁾ Not available in every market.

Emergency call

Introduction

Applies to: vehicles with emergency call function

Depending on the country and the vehicle equipment, the following functions may be available.

With the **emergency call**, you can call for help in dangerous situations as quickly as possible. Use this function when emergency help is needed ⇒ page 194.

With **online roadside assistance**, you can request assistance if there is a breakdown or a minor accident ⇒ page 195.

i Tips

- The services are provided through a SIM card installed in the vehicle. The cost of the call and data connections is included in the price of the services. Services are provided assuming that the cell phone network required for the installed SIM card is functioning and available for use. The available services set by Audi AG are only available within the cell phone network coverage area for the cell phone service provider selected by Audi AG.
- You can find what data will be transferred at www.audiusa.com.

Emergency call

Description

Applies to: vehicles with emergency call function

An emergency call is a combination of data transmission and a phone call. The data transmission from your vehicle forwards important information, such as the vehicle and position data, to the emergency call center.

i Tips

- The emergency call function cannot be deactivated in the Infotainment system settings.
- The availability of the services offered depends on the country and may change in the future.

Making an emergency call

Applies to: vehicles with emergency call function

The emergency call can be made two different ways.



Fig. 180 Front headliner: cover for the emergency call button

Requirement: the LED ② must be green.

Manual emergency call

Requirement: the ignition must be switched on.

- ▶ Tap the cover ① to open it.
- ▶ Press and hold the emergency call button until the LED ② blinks green. The emergency call will be made.
- ▶ If the emergency call button is pressed by mistake, then press it again immediately and hold it until the LED stays green. The emergency call will be canceled.

Automatic emergency call

The vehicle electrical system initiates an automatic emergency call under certain circumstances, for example if an airbag deploys. The LED in the emergency call button ② blinks green. The emergency call will be made. It cannot be canceled.

The LED indicates the status of the system as follows:

- **Green** – the emergency call function is available.
- **Red** – there is a malfunction in the emergency call function. Contact an authorized Audi dealer or authorized Audi Service Facility. Note the messages about the availability of the emergency function ⇒ page 195.

– **Off** – the emergency call function is not available, perhaps because no network is available.

i Tips

If the emergency call is canceled due to a poor connection, then the system automatically tries to connect again.

Messages

Applies to: vehicles with emergency call function

! Emergency call function: malfunction! Restricted functionality. Please contact Service

If this indicator light turns on and this message appears, the emergency call function is restricted. For example, you cannot call the emergency call center, but data may still be transmitted under certain circumstances. Drive to an authorized Audi dealer or authorized Audi Service Facility immediately to have the malfunction corrected.

! Emergency call function: malfunction! Function unavailable. Please contact Service

If this indicator light turns on and this message appears, you cannot make an emergency call. Drive to an authorized Audi dealer or authorized Audi Service Facility immediately to have the malfunction corrected.

Online roadside assistance

Description

Applies to: vehicles with online roadside assistance

An online roadside assistance call ¹⁾ is a combination of data transmission and a phone call. The data transmission from your vehicle forwards important information to the Audi service center, such as the vehicle and position data.

¹⁾ The availability of the services offered depends on the country and may change in the future.

Calling online roadside assistance

Applies to: vehicles with online roadside assistance



Fig. 181 Front headliner: online roadside assistance button

Calling online roadside assistance

- ▶ Press the button ③. The LED in the button turns red. The online roadside assistance call will be made.
- ▶ If you press the button ③ by mistake, then press it again. Or
- ▶ Select and confirm **Cancel** or **End call** in the Infotainment system.

Audi incident assistance

A minor accident may be detected by the vehicle electrical system. You have the option of selecting between **Call online roadside assistance** or **Make emergency call**.

- ▶ Select one of the options and confirm it by pressing the control knob.

i Tips

If the roadside assistance call is canceled due to a poor connection, then the call must be made again.

Service Facility, who will perform the work according to Audi factory specifications. Only Audi Genuine Parts are used when Audi experts perform repair or service procedures. Failure to use Audi Genuine Parts or Audi Genuine Accessories or performing repairs incorrectly may result in severe vehicle damage, such as corrosion.

Accessories and parts

Consult with an authorized Audi dealer or authorized Audi Service Facility before purchasing accessories or replacement parts. We recommend that you have your vehicle serviced by an authorized Audi dealer or authorized Audi Service Facility and that Audi Genuine Parts and Audi Genuine Accessories are used.

Audi does not endorse the use of products and accessories that it has not evaluated, even if the product is approved by a certified testing agency or government agency.

WARNING
- Installing unapproved accessories or incorrect replacement parts can cause vehicle damage and can increase the risk of an accident.
- Never attach accessories, such as telephone holders or cup holders, to the airbag covers or within the airbag deployment zone, because this increases the risk of injury if the airbag deploys.
- Do not use a license plate bracket on the front bumper that is different from the bracket installed at the factory, and do not attach any additional brackets.

Note
A correctly-installed exterior antenna is required for operating radio equipment in the vehicle. Otherwise, the increased electromagnetic waves can cause malfunctions in the vehicle. Observe the regulations in the country where the vehicle is being operated and the instructions from the radio equipment manufacturer.

Reporting Safety Defects
Applicable to U.S.A.

If you believe that your vehicle has a defect which could cause a crash or could cause injury or death, you should immediately inform the National Highway Traffic Safety Administration (NHTSA) in addition to notifying

Audi of America, Inc.
2200 Ferdinand Porsche Drive
Herndon, VA 20171

If NHTSA receives similar complaints, it may open an investigation, and if it finds that a safety defect exists in a group of vehicles, it may order a recall and remedy campaign. However, NHTSA cannot become involved in individual problems between you, your dealer, or Audi of America, Inc.

To contact NHTSA, you may call the Vehicle Safety Hotline toll-free at 1-888-327-4236 (TTY: 1-800-424-9153); go to http://www.safercar.gov;

8W0012721BJ

or write to:
Administrator NHTSA
1200 New Jersey Ave.,
S.E. West Building
Washington, DC
20590.

You can also obtain other information about motor vehicle safety from http://www.safercar.gov.

Applicable to Canada

If you live in Canada and you believe that your vehicle has a defect that could cause a crash, injury or death, you should immediately inform Transport Canada, Defect Investigations and Recalls. You should also notify Audi Canada.

Canadian customers who wish to report a safety-related defect to Transport Canada, Defect Investigations and Recalls, may either call Transport Canada toll-free at:

Tel.: 1-800-333-0510 or
Tel.: 1-819-994-3328 (Ottawa region and from other countries)
TTY for hearing impaired:
1-888-675-6863

or contact Transport Canada by mail at:

Motor Vehicle Safety Investigations Laboratory
80 Noel Street
Gatineau, QC
J8Z 0A1

For additional road safety information, please visit the Road Safety website at:

English:
http://www.tc.gc.ca/eng/motorvehiclesafety/menu.htm

French:
http://www.tc.gc.ca/fra/securiteautomobile/menu.htm

Declaration of compliance for telecommunications equipment and electronic systems

The manufacturer is not liable for radio malfunctions that are caused by unauthorized changes to the equipment.

Equipment

The following equipment complies with FCC section 15 and RSS-Gen:

- Audi adaptive cruise control*
- Audi side assist*
- Remote control key
- Garage door opener (HomeLink)*

FCC Part 15.19

This device complies with part 15 of the FCC Rules. Operation is subject to the following two conditions: (1) This device may not cause harmful interference, and (2) this device must accept any interference received, including interference that may cause undesired operation.

FCC Part 15.21

Changes or modifications not expressly approved by the party responsible for compliance could void the user's authority to operate the equipment.

RSS-Gen

This device complies with Industry Canada's licence-exempt RSSs. Operation is subject to the following two conditions:

- (1) This device may not cause interference; and
- (2) This device must accept any interference, including interference that may cause undesired operation of the device.

Technical data

Identification data

Vehicle identification label

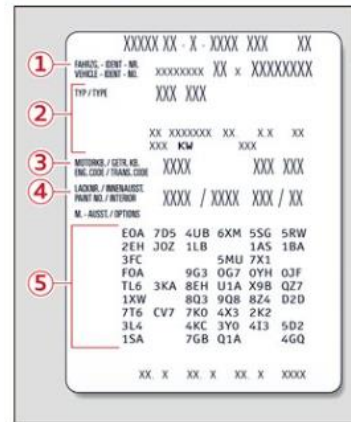


Fig. 288 Vehicle identification label

The vehicle identification label ⇒ fig. 288 is located in the luggage compartment under the cargo floor cover.

The vehicle identification label information can also be found in the Warranty & Maintenance booklet.

Vehicle data

Dimensions

	Length (in (mm))	Width (in (mm))	Width across the mirrors (in (mm))	Height at curb weight (in (mm))
A4 sedan	186.1 (4,726)	72.5 (1,842)	79.6 (2,022)	56.2 (1,427)
S4 sedan	186.8 (4,745)	72.5 (1,842)	79.6 (2,022)	55.3 (1,404)
allroad	187.0 (4,750)	72.5 (1,842)	79.6 (2,022)	58.8 (1,493)

The sticker contains the following vehicle data:

- ① Vehicle Identification Number (VIN)
- ② Vehicle type, engine output, transmission
- ③ Engine and transmission codes
- ④ Paint and interior codes
- ⑤ Optional equipment numbers

Vehicle identification number (VIN)

The VIN is located in the following areas:

- Select: the **MENU** button > **Vehicle** > left control button > **Service & checks** > **Vehicle information**.
- On the vehicle identification label
- At the front behind the windshield*
- in the engine compartment on the right side

Notes about technical data

The values may vary based on special equipment as well as market-specific equipment and measuring methods.

Please note that the specifications listed in the vehicle documentation always take precedence.

Tips

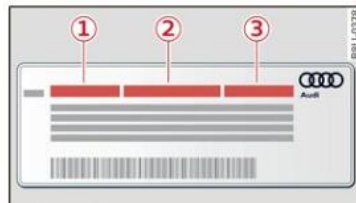
Any technical data that is missing was not available at the time of printing.

Technical data

Capacities

	Approximate capacities
Fuel tank, front wheel drive	14.3 gal (54 L)
Fuel tank, all wheel drive	15.3 gal (58 L)
Windshield and headlight washer system*	5.1 qt (4.8 L)

Weights



Applies to: sedan
Fig. 289 safety certificate



Applies to: allroad
Fig. 290 safety certificate

Gross Vehicle Weight Rating (GVWR)

The maximum permitted total weight ① of the vehicle is listed on the safety certificate on the side area of the door or on the driver's door pillar.

Gross Axle Weight Rating (GAWR)

The maximum permitted load on the front axle ② or the rear axle ③ is listed on the safety certificate on the side area of the door or on the driver's door pillar.

Load

The maximum permitted load is listed on the tire pressure label on the driver's door pillar.

Roof load

The maximum permissible roof load is 200 lbs (90 kg).

Numbers and Symbols

3-zone deluxe automatic climate control 71

A

A/C cooling mode	71
ABS	137
Accessories	62, 368
Active lane assist	
Cleaning the camera area	342
<i>also refer to Audi active lane assist</i>	116
Adaptive cruise control	101
Cleaning the sensors	342
Messages	110
Predictive control	99
Adjusting air distribution (automatic climate control)	72
Adjusting the additional display	17
Adjusting the sound	243
Adjusting the temperature (automatic climate control)	72
Adjusting the volume	17
Advanced key	
<i>refer to Convenience key</i>	76
Airbag	260
Airbag system	260, 280
Advanced Airbag System components	267
Care	275
Children	286
Child restraints	286
Components (front airbags)	267
Danger of fitting a child safety seat on the front passenger seat	261
Disposal	275
Front airbags	265
How do the front airbags work?	270
How many airbags does my vehicle have?	267
How the Advanced Airbag System components work together	269
Important safety instructions on the knee airbag system	278
Indicator light	272
Knee airbags	276
Monitoring	272
PASSENGER AIR BAG light	272
Repairs	275

Index

Safety instructions	274
When must the system be inspected?	272
Alarm system	
<i>refer to Anti-theft alarm system</i>	34
Alignment pin (changing the wheel)	347
All-weather lights	47
All season tires	336
All wheel drive	
Indicator light	26
<i>also refer to quattro</i>	141
AMI	
<i>refer to Audi music interface</i>	224
Android Auto	
<i>refer to Audi smartphone interface</i>	237
Anti-freeze	
Windshield washer system	320
Anti-Lock Braking System	
<i>refer to ABS</i>	137
Anti-Slip Regulation	
<i>refer to ASR</i>	137
Anti-theft alarm system	34
Apple CarPlay	
<i>refer to Audi smartphone interface</i>	237
Arrow view	160
Ashtray	62
ASR	137
Audi active lane assist	116
Messages	118
Audi adaptive cruise control	
Distance display, distance warning	109
Traffic jam assist	108
Audi connect	
<i>refer to connect</i>	185, 186
Audi connect Infotainment	
Services overview	187
Audi drive select	125
Audi Entertainment mobile	226
Audi music interface	224
Audi music stream	
<i>refer to Wi-Fi</i>	191, 221
Audio files	227
Audio player	
Bluetooth audio player	221
Wi-Fi audio player	221
Audio track	230
Audi phone box	173

It has always been Audi's policy to continuously improve its products. AUDI AG reserves the right to make changes in design and specifications, and to make additions or improvements in its products without incurring any obligation to install them on products previously manufactured. This owner's manual is based on the current data available when it was printed. Text, illustrations, and specifications in this owner's manual are based on the most current information available at the time of printing, and shall not constitute a basis for liability claims.

These instructions may not be reproduced or translated in whole or in part without written consent of AUDI AG. All rights reserved by AUDI AG.



For the sake of the environment

Printed on eco-friendly paper (bleached without chlorine, recyclable).

Owner's Manual
Englisch Nordamerika 11.2018
8W0012721B]



8W0012721B]

www.audi.com