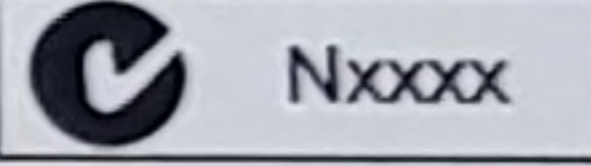

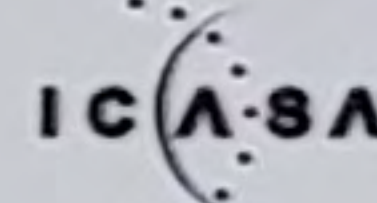


Manufactured in Germany by: **HARMAN**
 Model: MGU RSE D1
 Model No.: HB: B926 0007 01 MAC-Adr.: 001C07AE164A EC: 082
 HW: 1.3 SNR: 3428605 Accession No.: 1721839000
 Version: ICE Date: 20 / 18
BMW 6512 CI 8 713 712 01

Manufactured by: **HARMAN**     
 Model: MGU RSE QD ID: xxxxxx 2863881

**CLASS 1
LASER PRODUCT**
 IEC 60825-1:2014


 Nxxxx  NTC
 Type Approved
 No.: ESD-XXXXXXX
 "APPROVED"


FCC ID: xxxxxxxx IC: xxxxx-xxxx

THIS PRODUCT COMPLIES WITH DHHS RULES 21 CFR SUBCHAPTER J APPLICABLE TO THE DATE OF MANUFACTURE.


THIS DEVICE COMPLIES WITH PART 15 OF THE FCC RULES AND INDUSTRY CANADA LICENSE-EXEMPT RSS STANDARD(S). OPERATION IS SUBJECT TO THE FOLLOWING TWO CONDITIONS:

- (1) THIS DEVICE MAY NOT CAUSE HARMFUL INTERFERENCE, AND
- (2) THIS DEVICE MUST ACCEPT ANY INTERFERENCE RECEIVED, INCLUDING INTERFERENCE THAT MAY CAUSE UNDESIRE OPERATION.

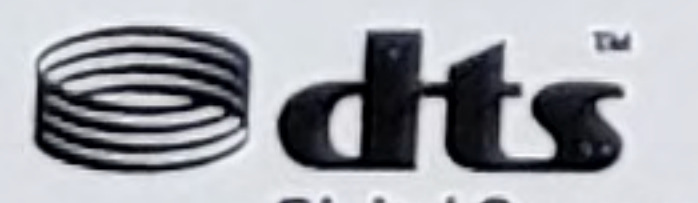
 CCABXXGXXXXXXXX

 R xxx - xxxxxx

OMAN - TRA
 TRA/TA-R/xxxx/xx
 xx/xx/xxxx
 Complies with
 IDA Standards
 DBxxxxx

 **DOLBY** DIGITAL
 Manufactured under license from Dolby Laboratories. Dolby and the double-D symbol are trademarks of Dolby Laboratories.

Anatel: XXXX-XX-XXXX
 ETA: XXX/XXXX/XXXX
 Aprobado CNC XX-XXXX

 **dts**
 Digital Surround
 For DTS patents, see <http://patents.dts.com>

12V == 5A

 XXXXXXXX
 CMIIT ID: xxxxyyxxxx

 **NOM**
 NYCE

38682/SDPPI/2015
3891


 BMW & IK RSE
 SN: 0004162
 PN: 2970384
 EC: 22 ID: B
 05.04.18 [D1]

DATE: 01/01/2015
PART NO: 071071201

Manufactured by:
HARMAN
Model: MGU RSE



**CLASS 1
LASER PRODUCT**
IEC 60825-1:2014

FCC ID: xxxxxxxx IC: xxxxx-xxxx
THIS PRODUCT COMPLIES WITH DHS RULES 21 CFR SUBCHAPTER J APPLICABLE TO THE DATE OF MANUFACTURE.
THIS DEVICE COMPLIES WITH PART 15 OF THE FCC RULES AND INDUSTRY CANADA LICENSE-EXEMPT RSS STANDARD(S). OPERATION IS SUBJECT TO THE FOLLOWING TWO CONDITIONS:
(1) THIS DEVICE MAY NOT CAUSE HARMFUL INTERFERENCE, AND
(2) THIS DEVICE MUST ACCEPT ANY INTERFERENCE RECEIVED, INCLUDING INTERFERENCE THAT MAY CAUSE UNDESIRABLE OPERATION.

TRA REGISTERED TRADER
DEALER No. 0000000000
NFC Type Approval No. ESD-XXXXXX
IC: 3882/SDPP1/2015 3891

CCABXXGXXXXXXX

OMAN - TRA TRA/TA-R/xxxx/xx

Complies with IDA Standards DBxxxxx

DOLBY
DIGITAL 1

Manufactured under license from Dolby Laboratories. Dolby and the double-D symbol are trademarks of Dolby Laboratories.

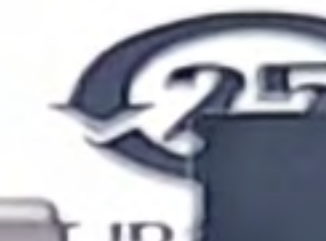
Anatel: XXXX-XX-XXXX
ETA: XXX/XXXX/XXXX
Aprobado CNC XX-XXXX

dts
Digital Surround

For DTS patents, see <http://patents.dts.com>

3882/SDPP1/2015
3891

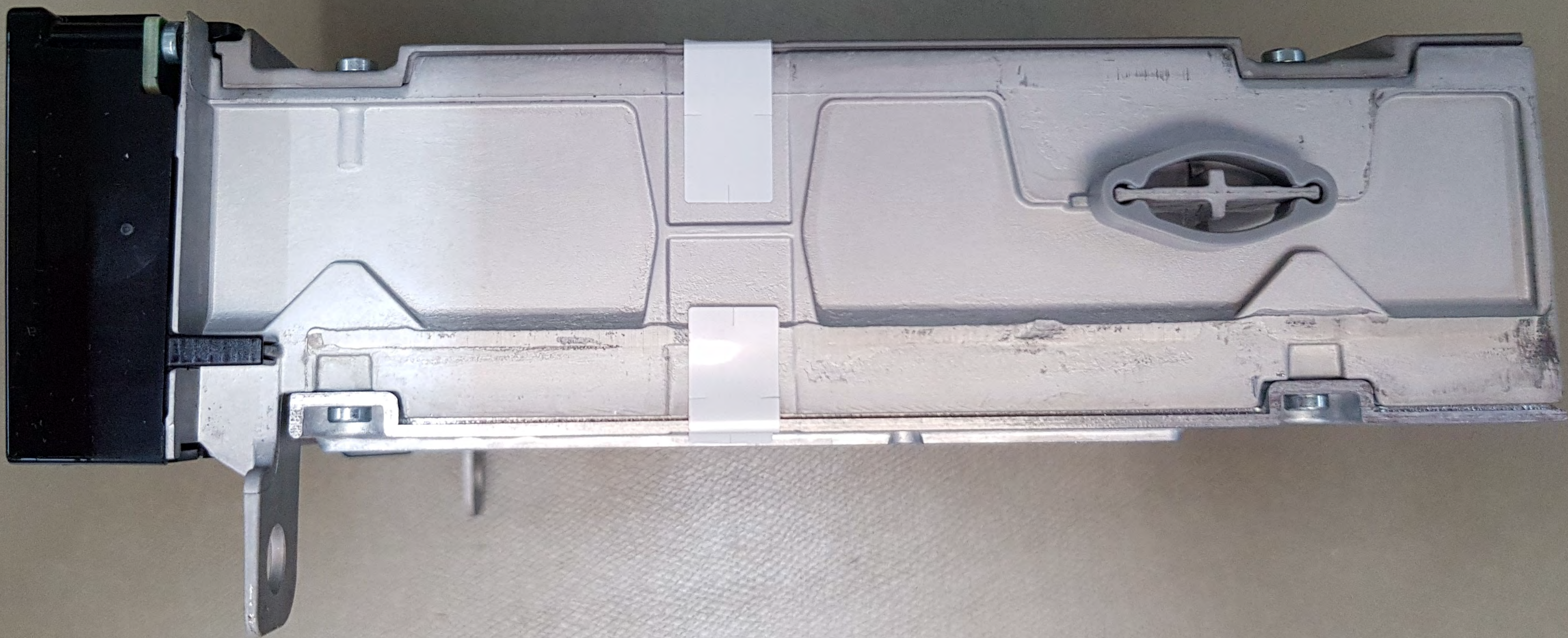
12V 5A



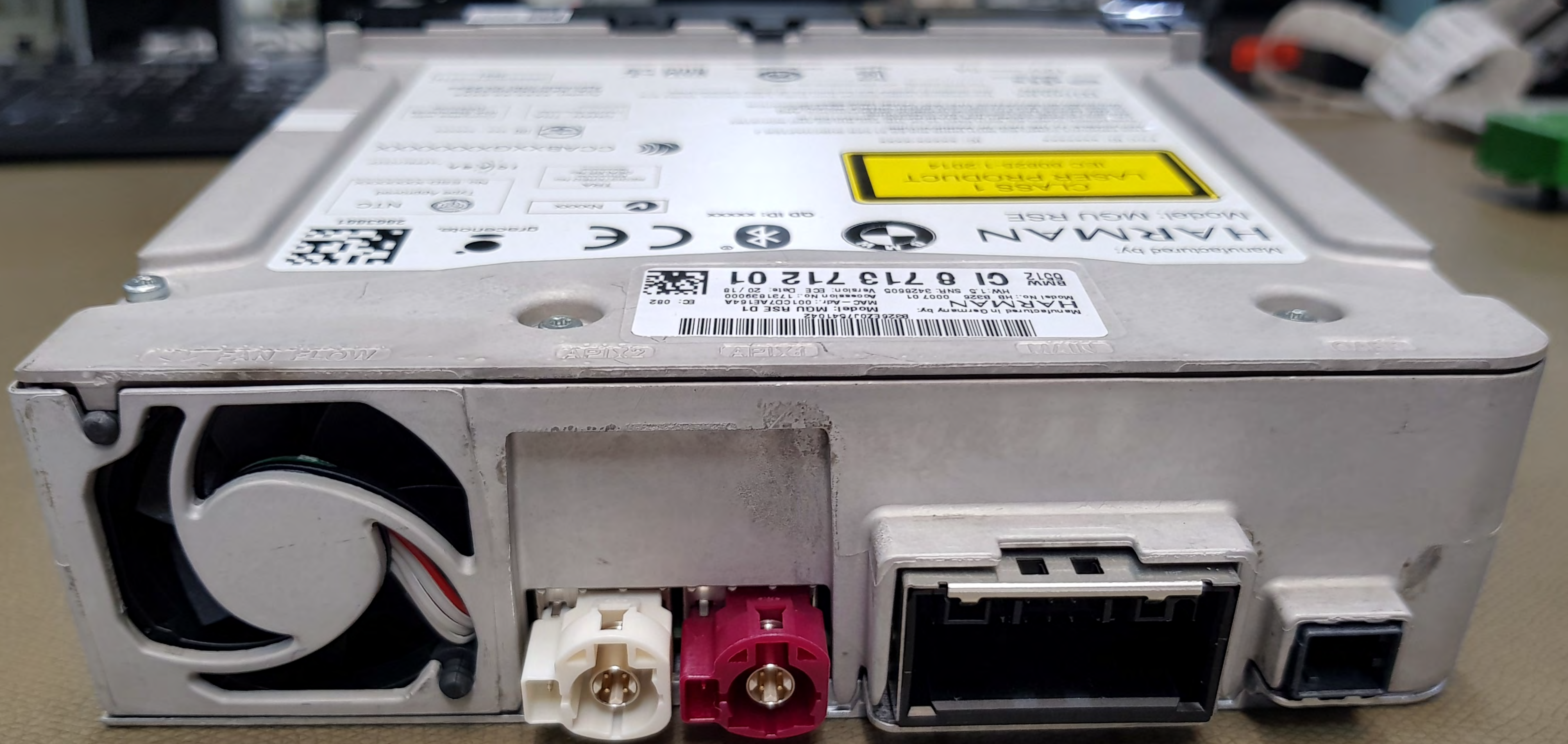
NOM

BMW & HARMAN
S/N: 0000000000
P/N: 0000000000
EC ID: 071071201









HARMAN
Model: MGU RSE D1
MAC-Addr: 001CD7AE164A
HW: 1.0 SNR: 342850D Version: ECE Date: 20/18
Model No.: HB 8326 0007 01
Accession No.: 173189000
EC: 082

CLASS 1
LASER PRODUCT
Laser Power: 1.2014

Manufactured by:
HARMAN
Model: MGU RSE
GD ID: KXXX
CE
Bluetooth
NTC
FAN FLOW
APX2
APX3