



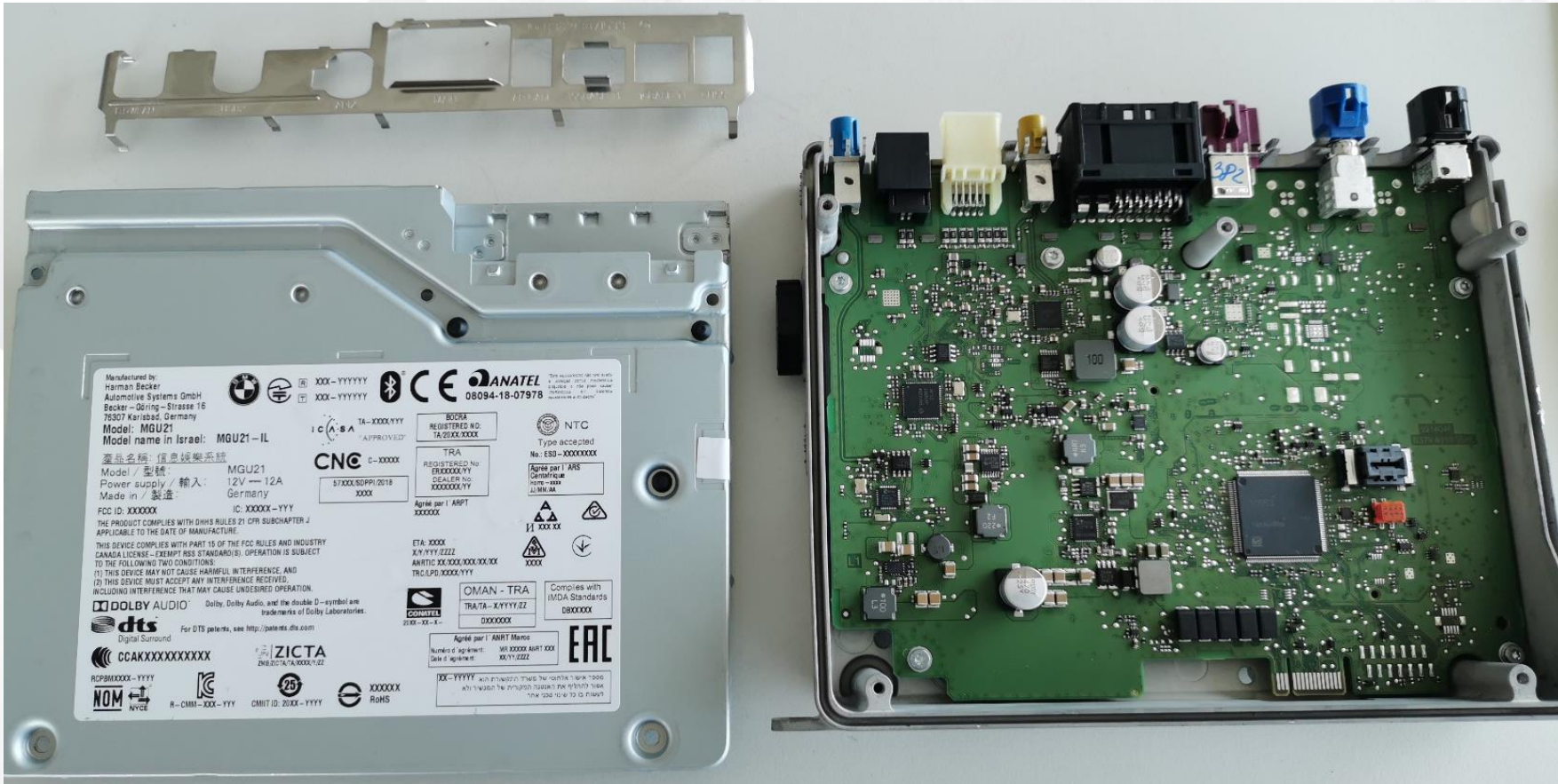
**HARMAN**  
A SAMSUNG COMPANY

**I&K21 MGU21 HU**  
**Internal photos**

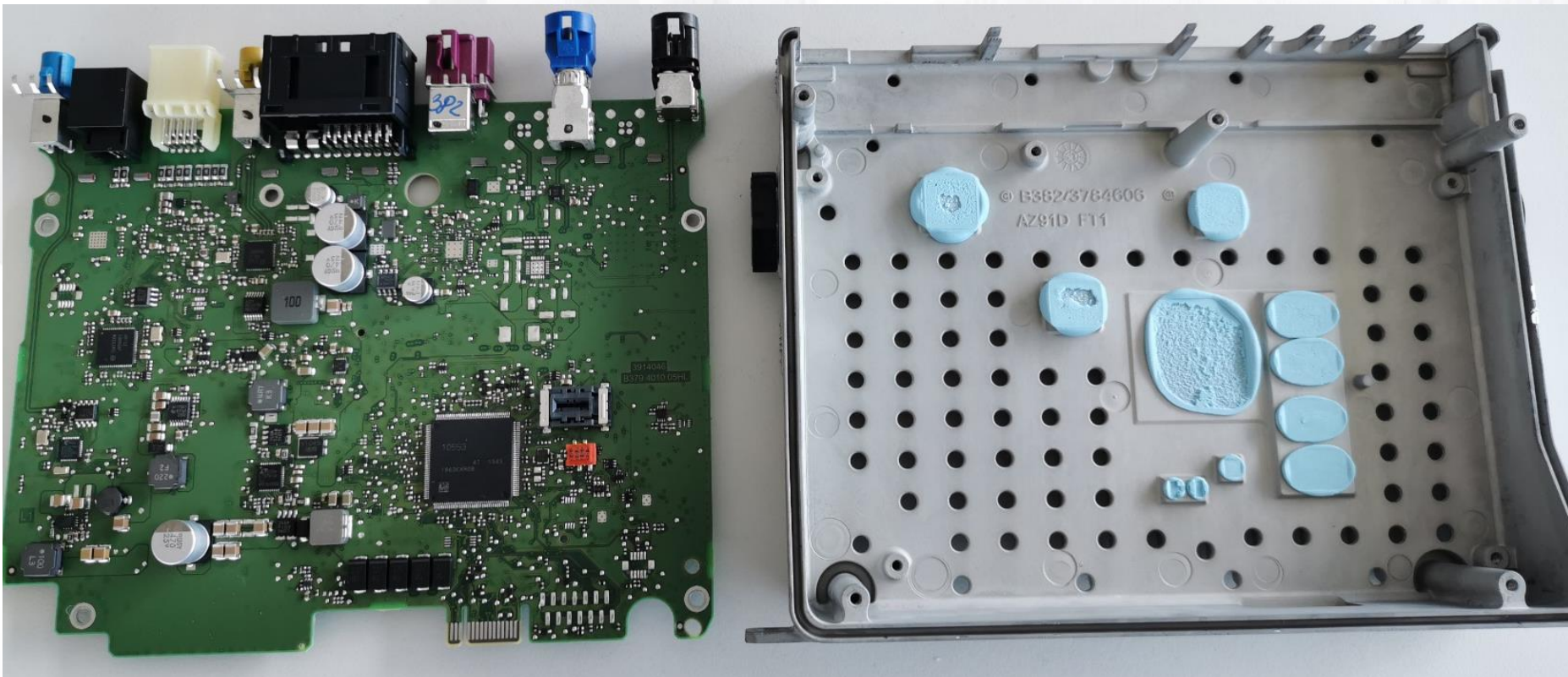
**CORBU Alexandru George**  
**NEACSU Costin Alexandru**

09 October 2020

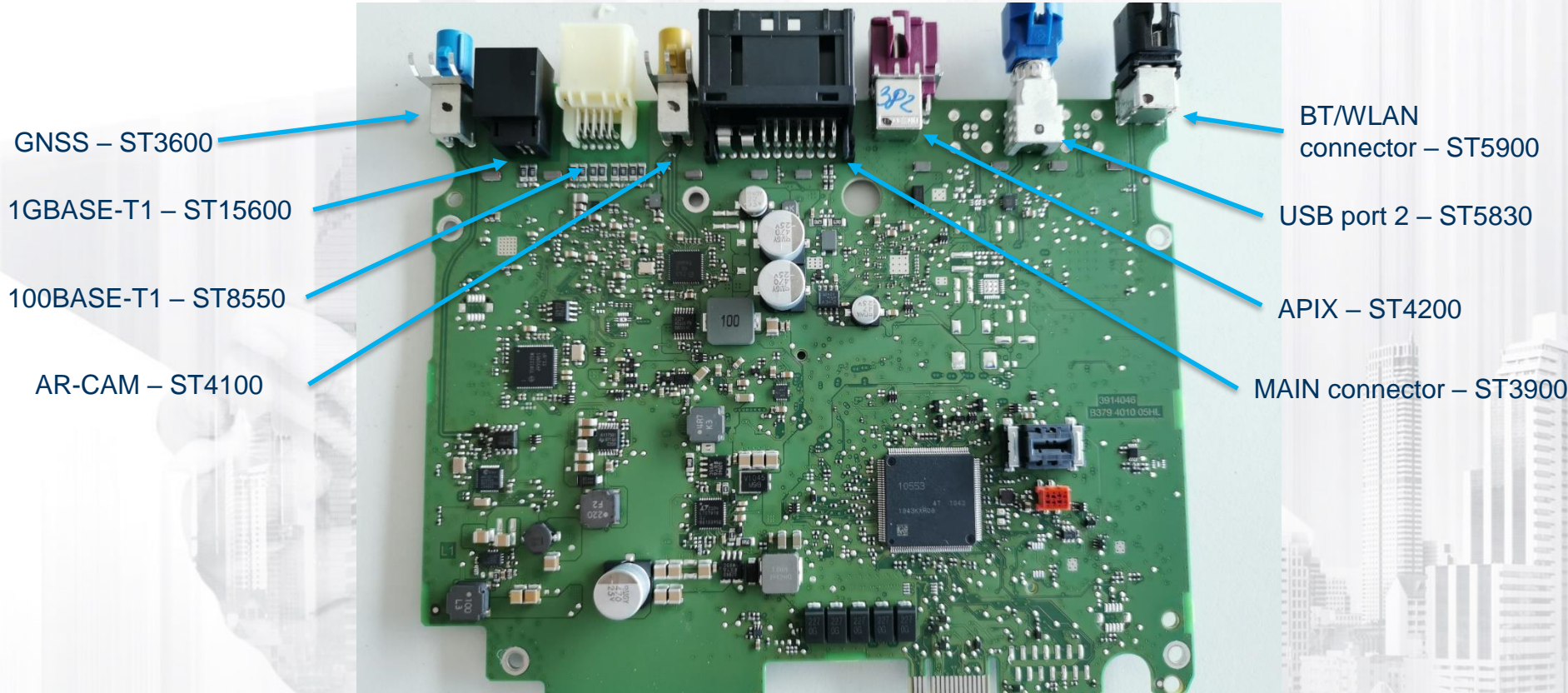
# I&K21 MGU21 HU – Internal photos MAIN BOARD 4010



I&K21 MGU21 HU – Internal photos  
**MAIN BOARD 4010**



# MAIN BOARD – Upper side

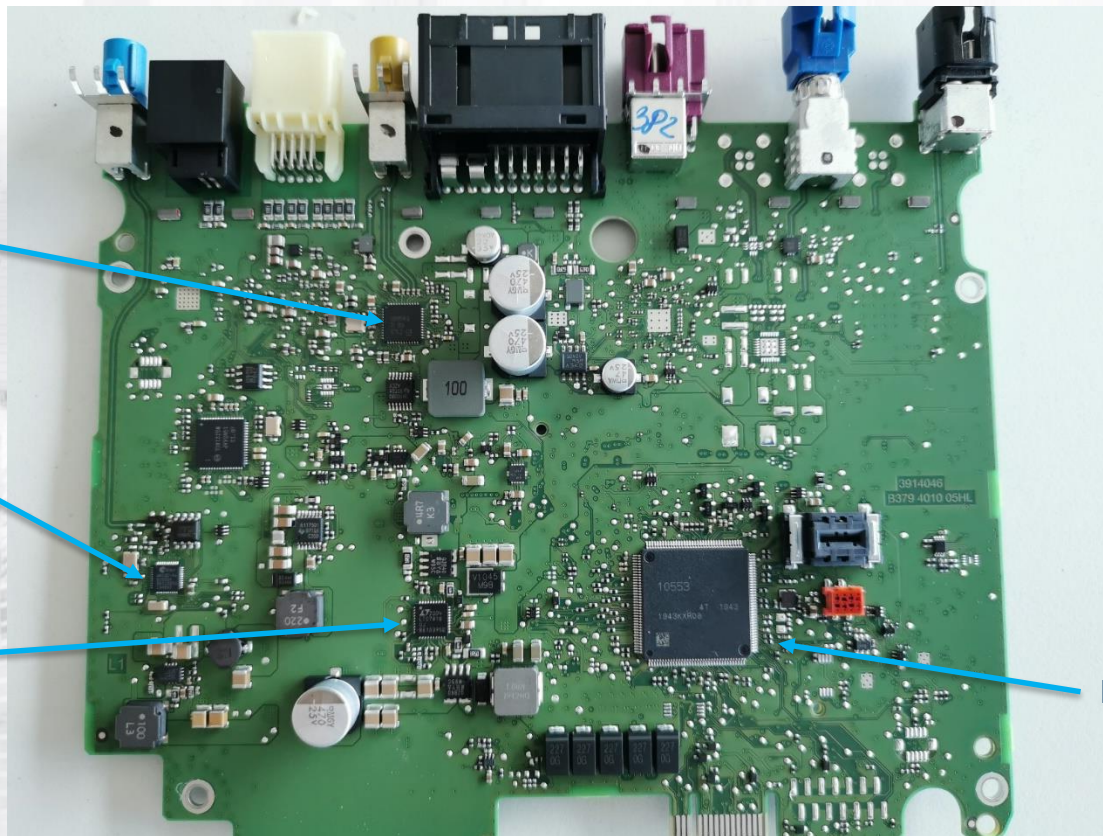


# MAIN BOARD – Upper side

AR-CAM  
DeSerializer

GNSS

Main Power  
Supply



IO-Controller

# MAIN BOARD – Lower side

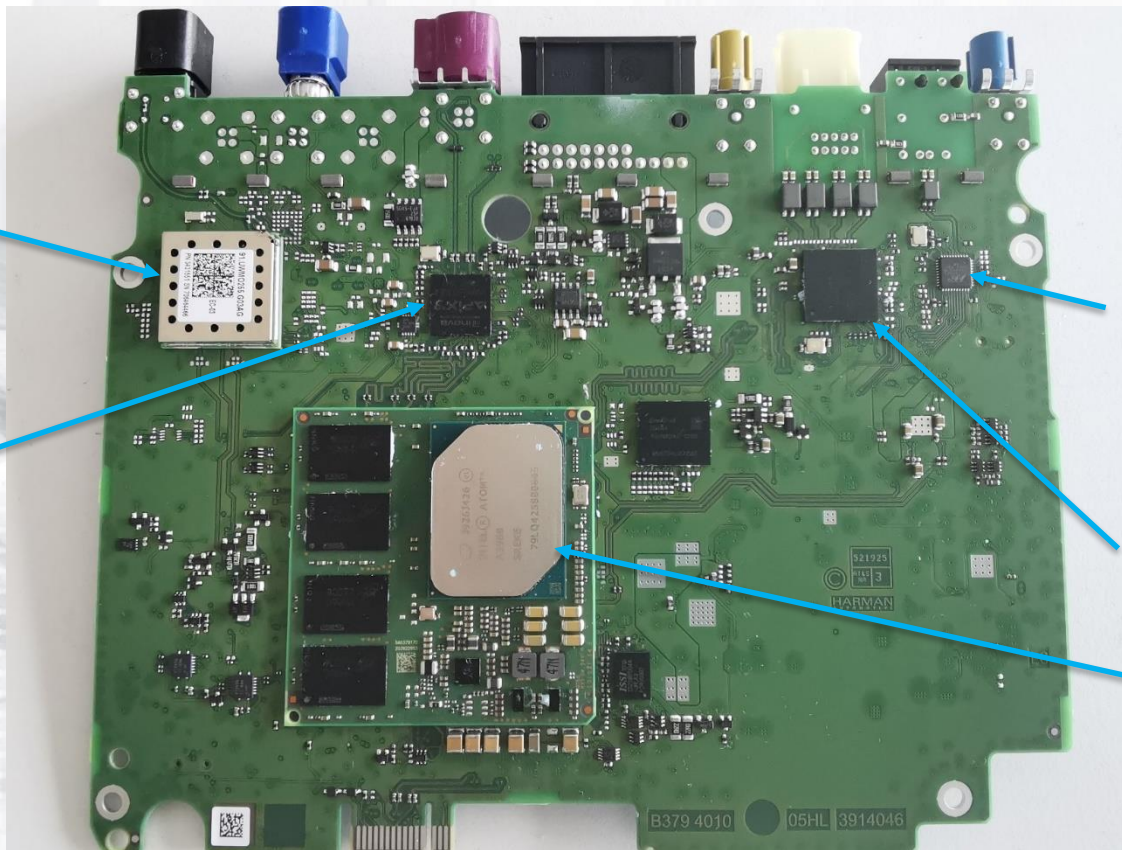
BT/WLAN connector

APIX3

Ethernet Gbit phy  
1000BASE-T1

Ethernet  
BroadR-Reach  
100BASE-T1

SoC APL

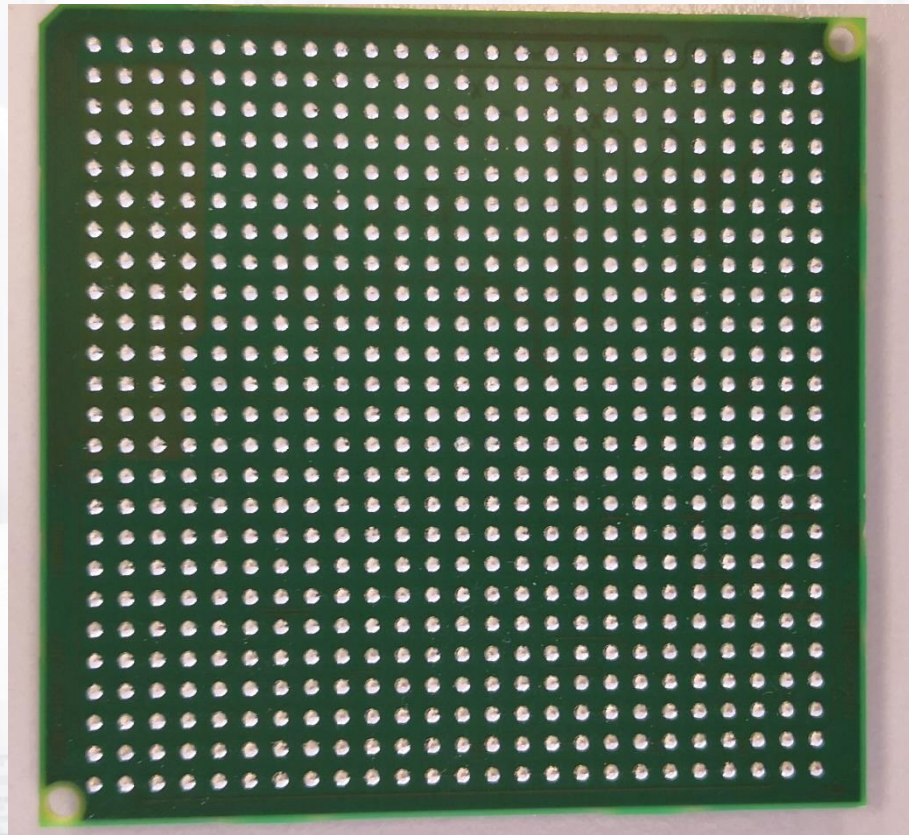
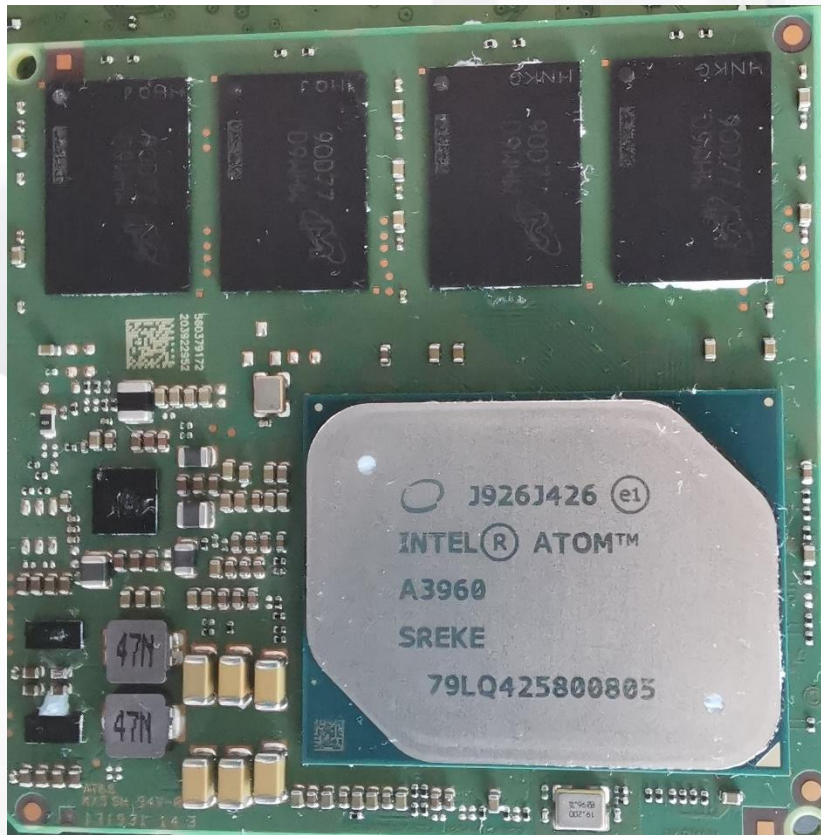


I&K2I MGU2I HU – Internal photos

# Main board (lower side) W/O SoC BOARD (W/O LGA module)



# SoC BOARD (front & back side)







THANK YOU