

CLASS 1
LASER PRODUCT
DIN EN 60825-1:2003-10



Manufactured under license from Dolby Laboratories. Dolby and the double-D symbol are trademarks of Dolby Laboratories.



Manufactured under license under U.S. Patent #5,451,942; 5,956,674; 5,974,380; 5,978,762; 6,487,535 & other U.S. and worldwide patents issued & pending. DTS and DTS Digital Surround are registered trademarks and the DTS logos and Symbols are trademarks of DTS, Inc. © 1996-2007 DTS, Inc. All Rights Reserved.



Model Name: BH DIS

Certification No.: T8G-BH DIS

FCC-ID: T8GBH DIS IC: 6434A-BH DIS Bluetooth QD ID B013386

THIS PRODUCT COMPLIES WITH DHHS RULES 21 CFR
SUBCHAPTER J APPLICABLE TO THE DATE OF MANUFACTURE.

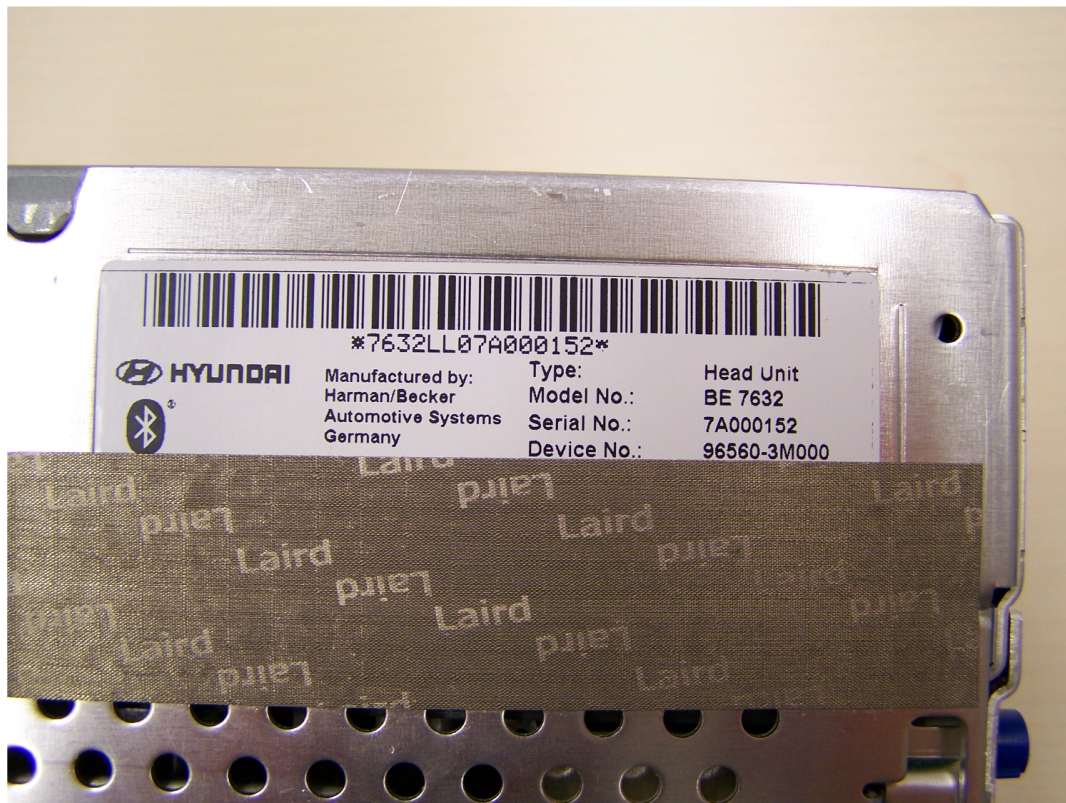
THIS DEVICE COMPLIES WITH PART 15 OF THE FCC RULES. OPERATION IS SUBJECT
TO THE FOLLOWING TWO CONDITIONS:

- (1) THIS DEVICE MAY NOT CAUSE HARMFUL INTERFERENCE, AND
- (2) THIS DEVICE MUST ACCEPT ANY INTERFERENCE RECEIVED,
INCLUDING INTERFERENCE THAT MAY CAUSE UNDESIRABLE OPERATION.



CMII ID: 2008DJ1981

Photo 5: BH Hyundai (left side detail view)



3.2.4.5 Photo Documentation of Test Set-up

Photo 10: indirect contact discharge (horizontal)

