

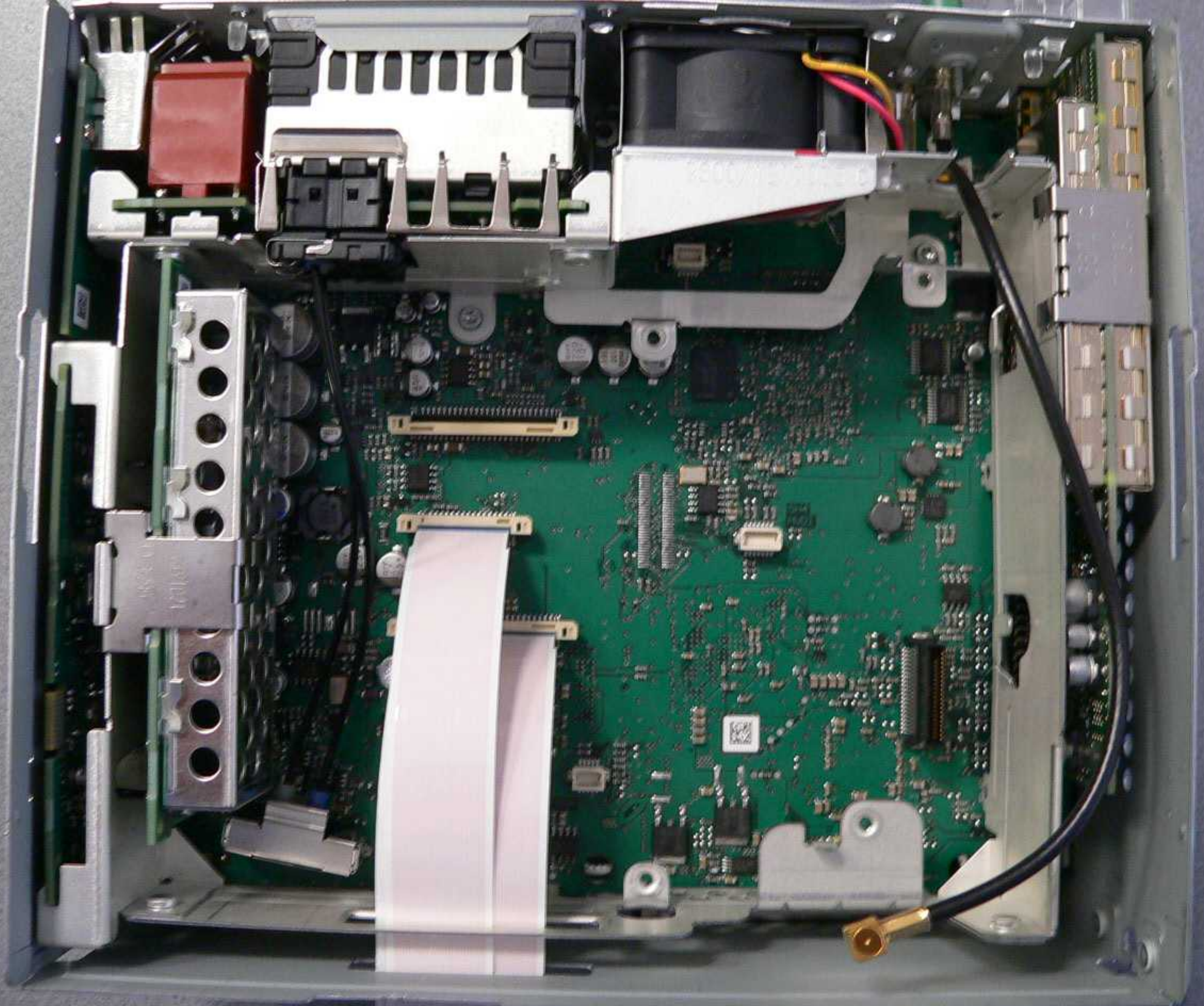
INTEL
SERIAL NUMBER
DATE
PART NUMBER
087102020 001

PBF

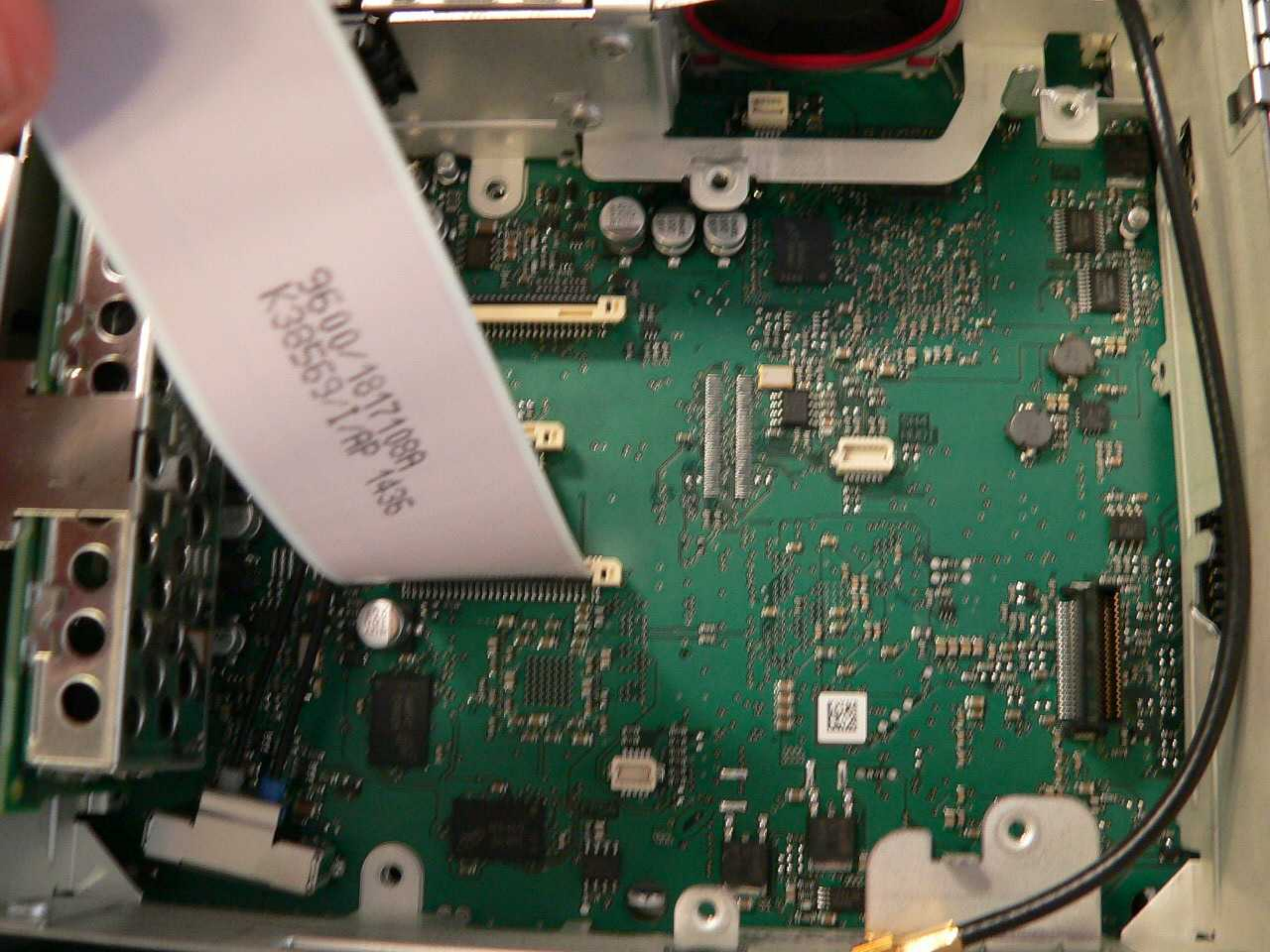






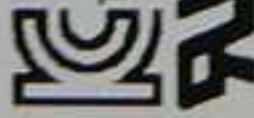


92M1 DA11/695636
1817/0096



TOSHIBA

DISK DRIVE MK1060GSC
HDD2G32 L ZK01 T
DC+5V 1.4A DATE:24JAN2012



TSD-MK2060GSC(B)

D33003



010 A0/TP112W



E145163



LR39635



M723
Z218



CE

S/N 120KT04RT PZ5 EC.A



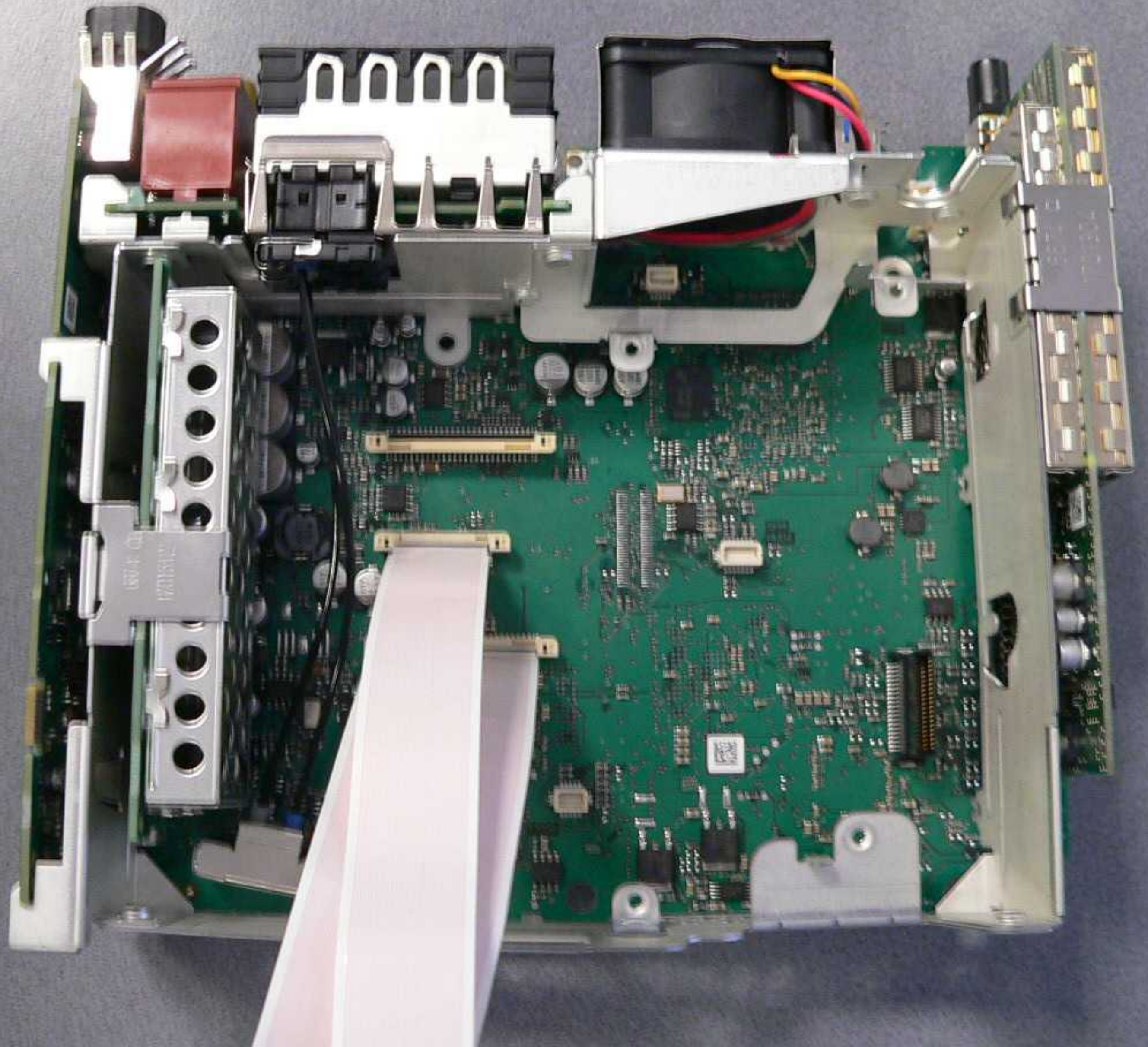
8455MB (CYL16383 H16.S63)
100GB(LBA 195,371,568Sectors)

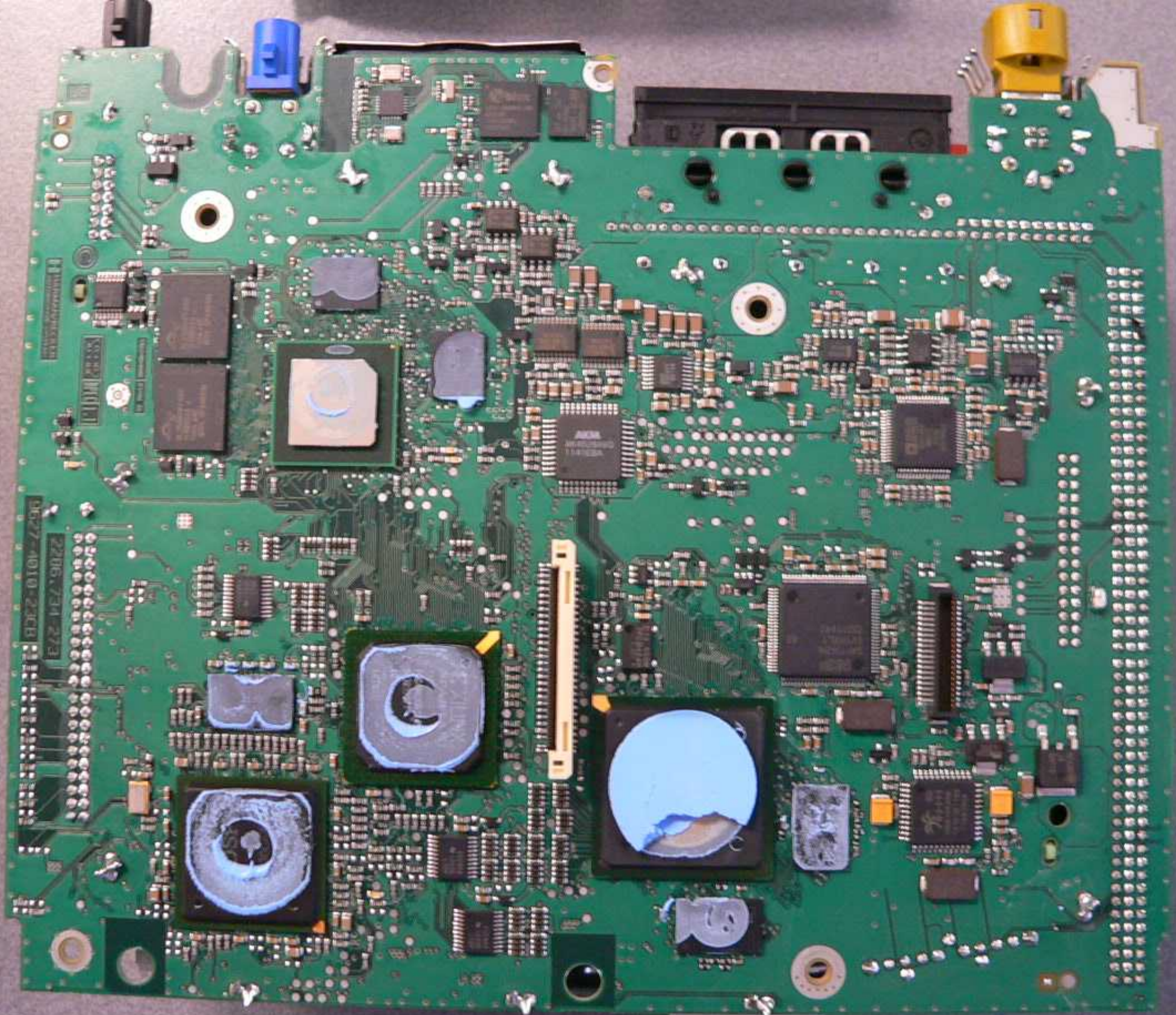


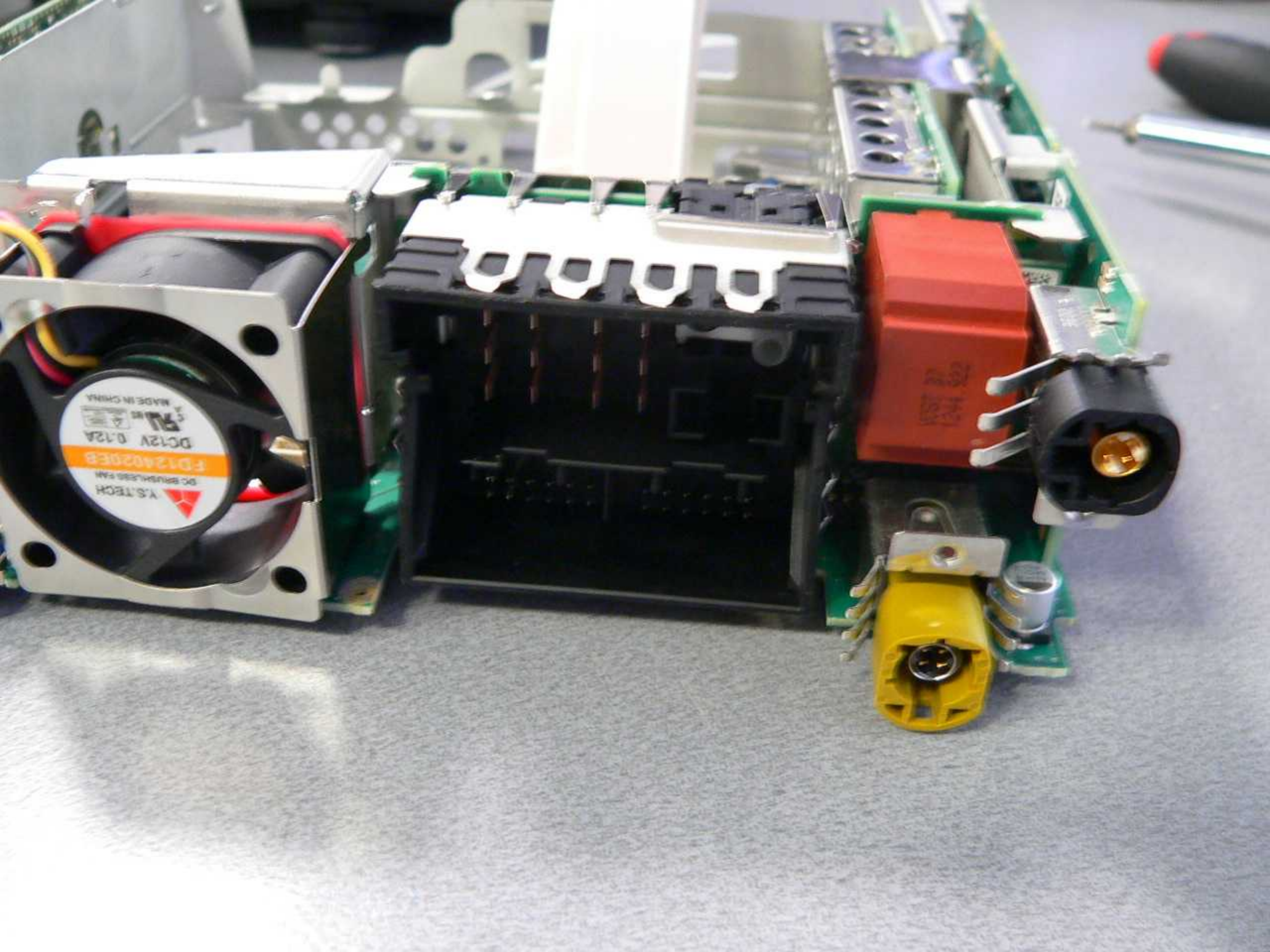
EC20
02282933

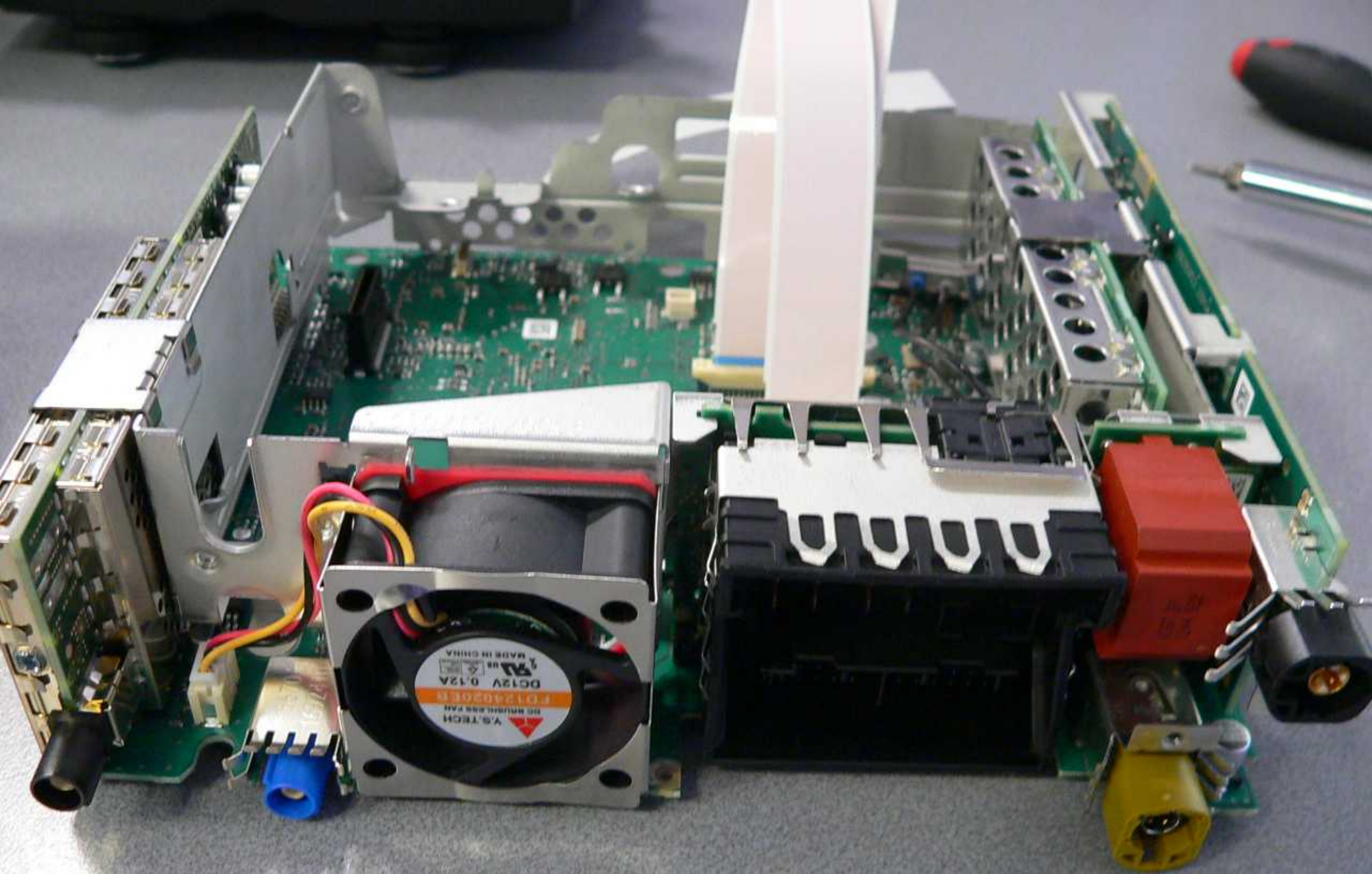
TOSHIBA CORPORATION
菲律賓製造 MADE IN PHILIPPINES

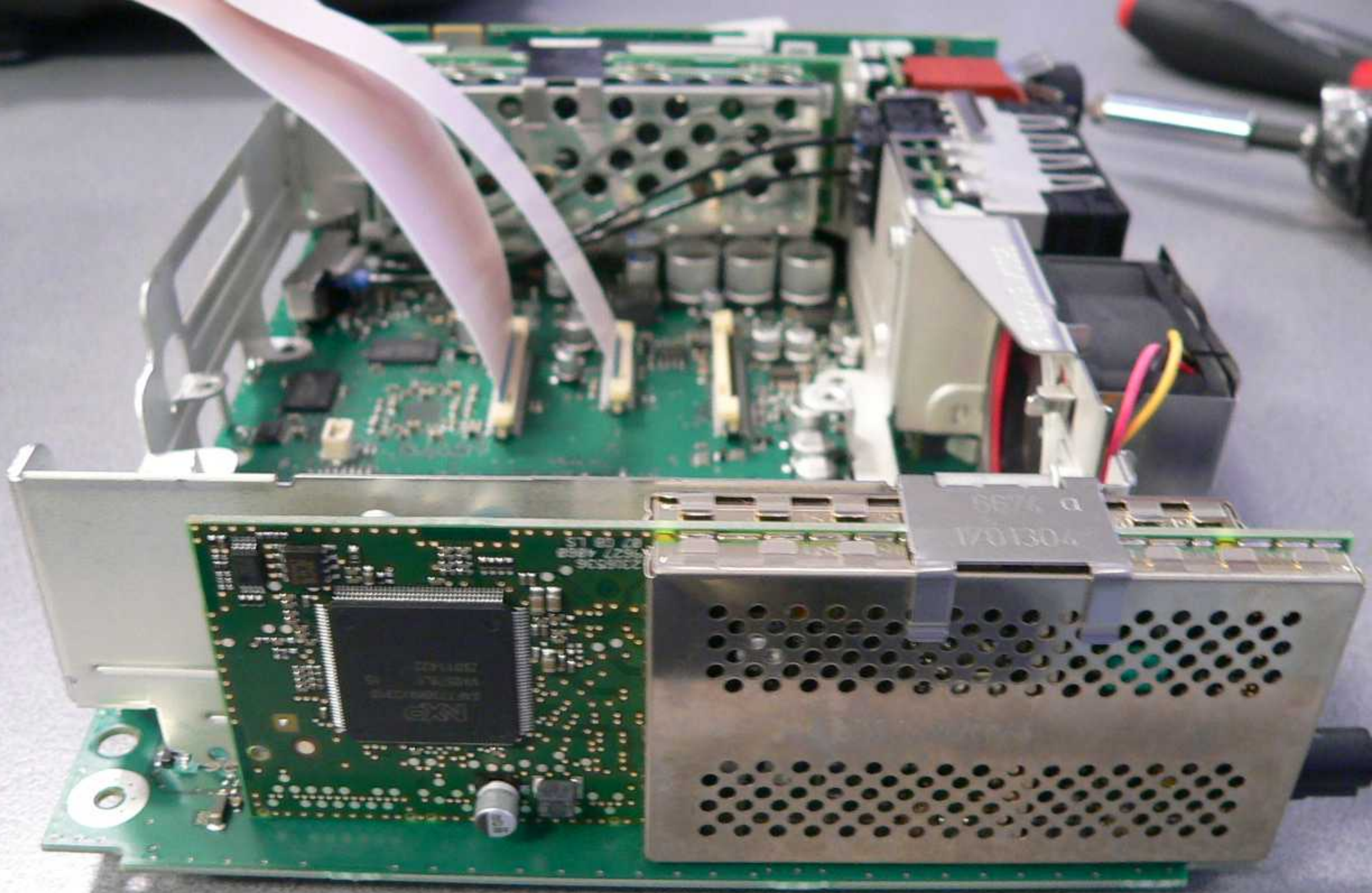
- *DO NOT REMOVE ANY LABELS.
- *DO NOT PUSH ON THE TOP COVER.
- *RATTLE NOISE IS NORMAL.
- *HANDLE ONLY BY SIDES OF BASE.
- *AVOID GIVING SHOCK.
- *DO NOT COVER BREATHING HOLE.





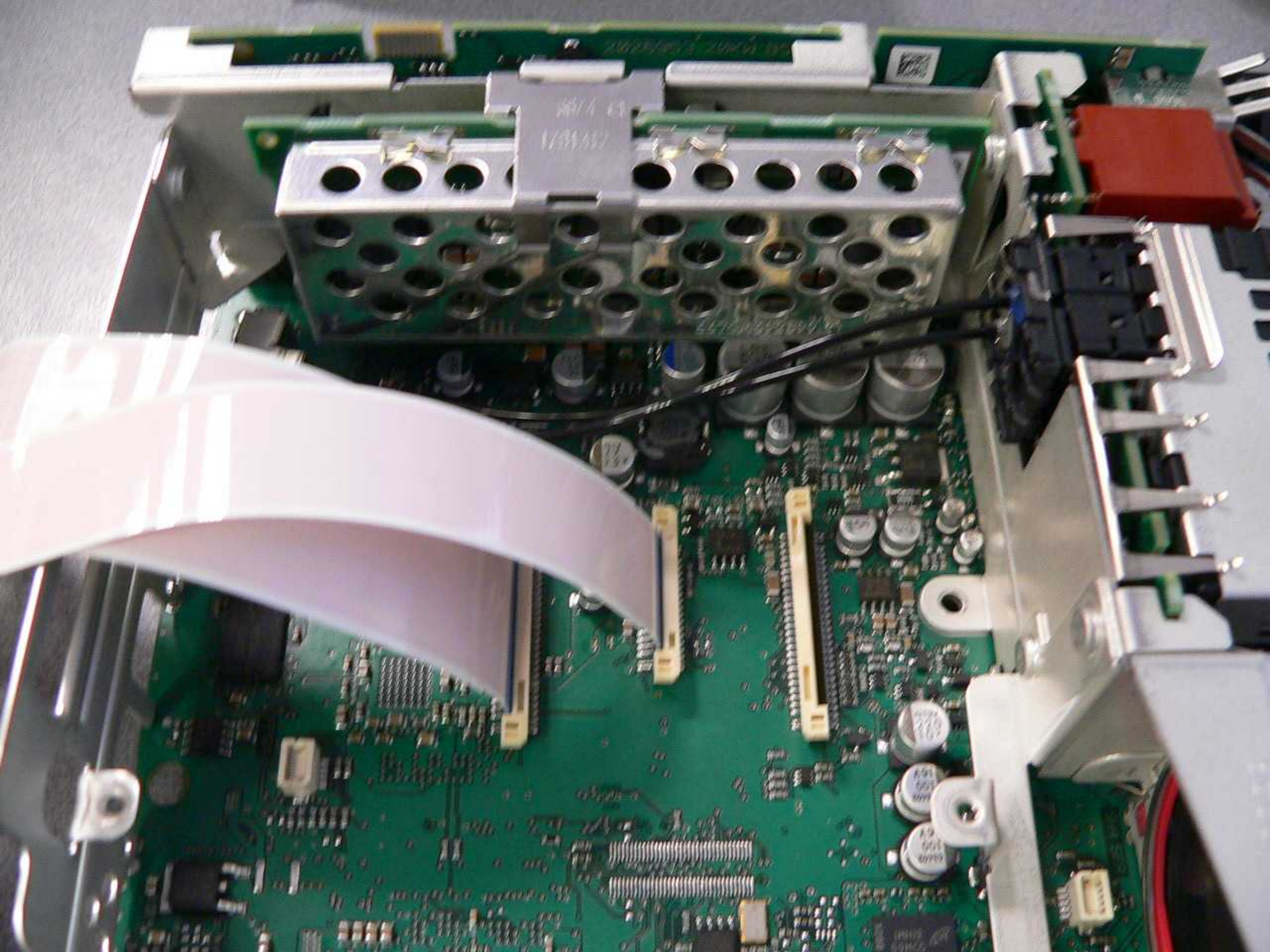






201002
1701304
INTEL
87 08 LS
2584 229
9C5802

1701304
8576 Q

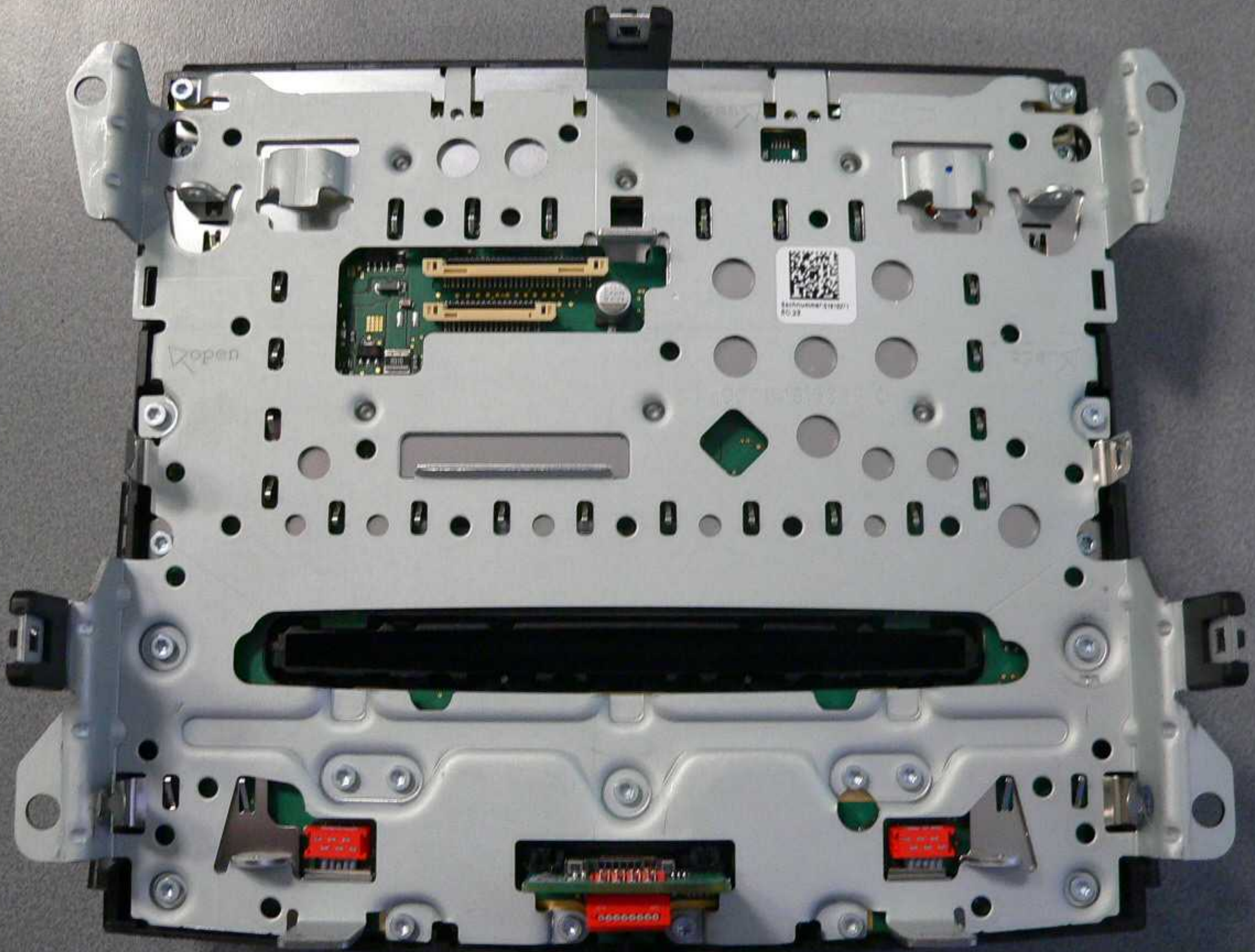




ATI

ATI
Radeon

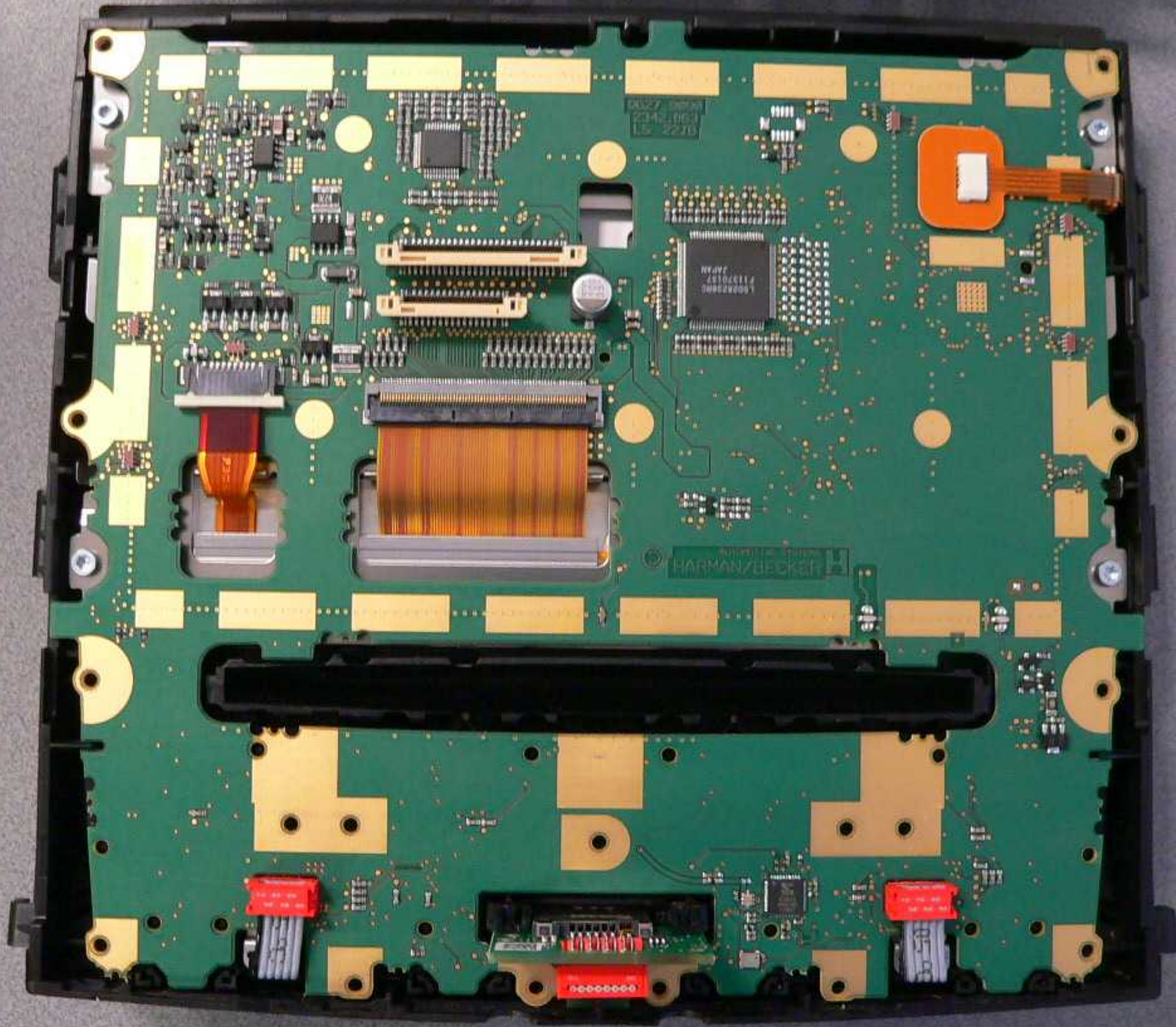
9500
K300

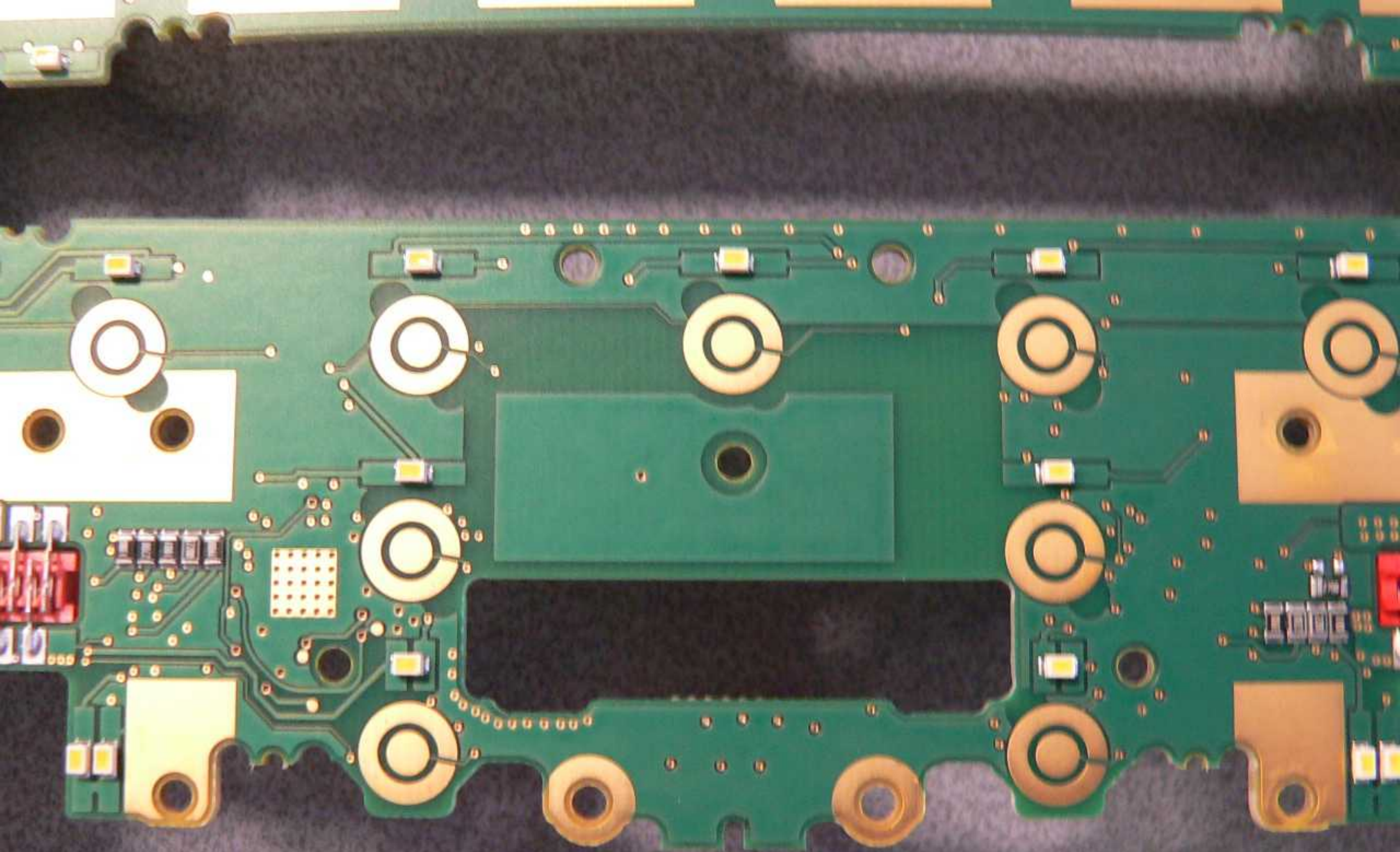


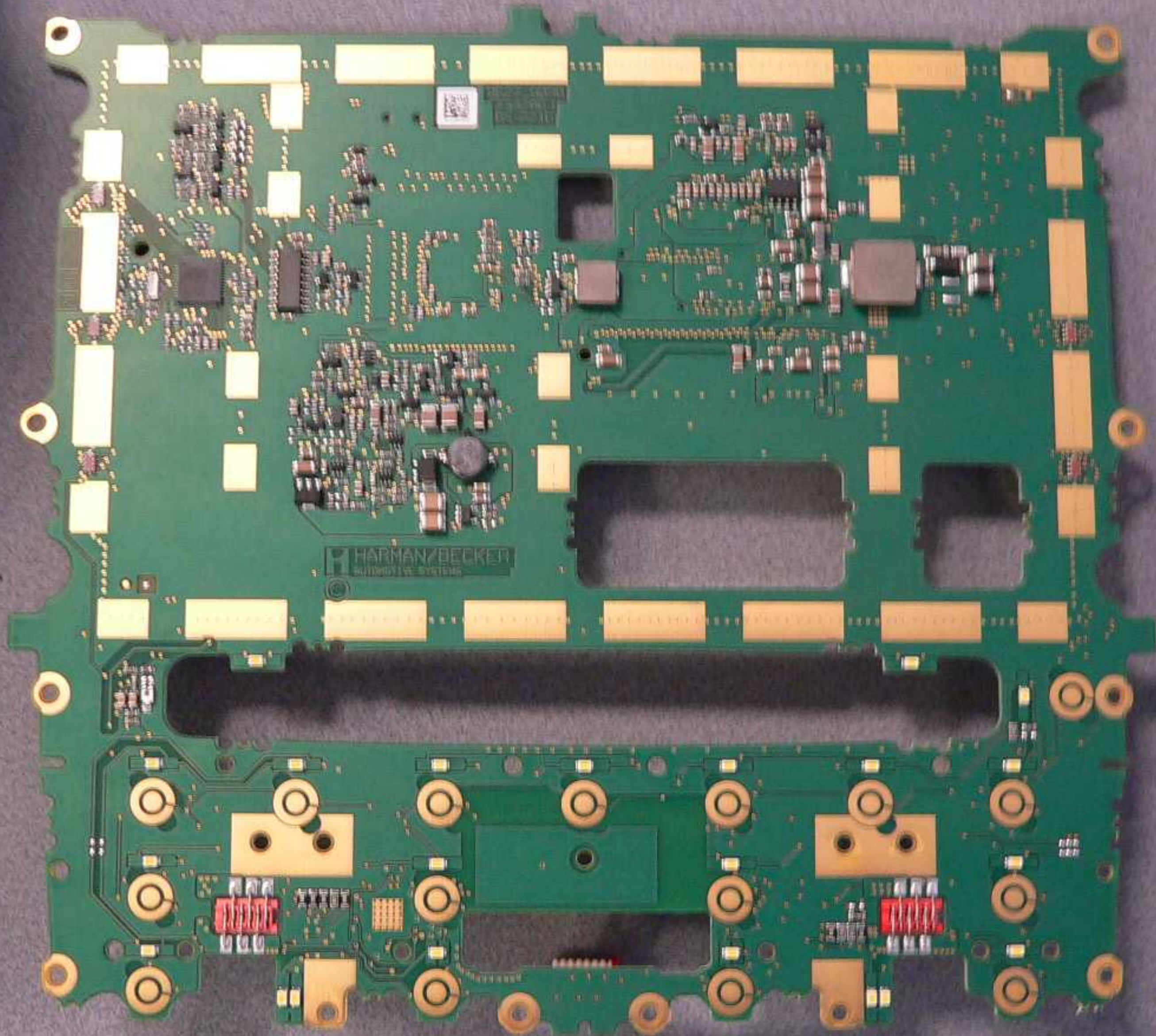
SERIAL NUMBER 6181221
RC 23

Open

00000000









GCX062AKQ-E
N00B20078081Z03
AM070A11Y01000Z3B20B

Part No.02339994 EC:02
41378855 N00B20078081Z03

73114 0

404 111109

