

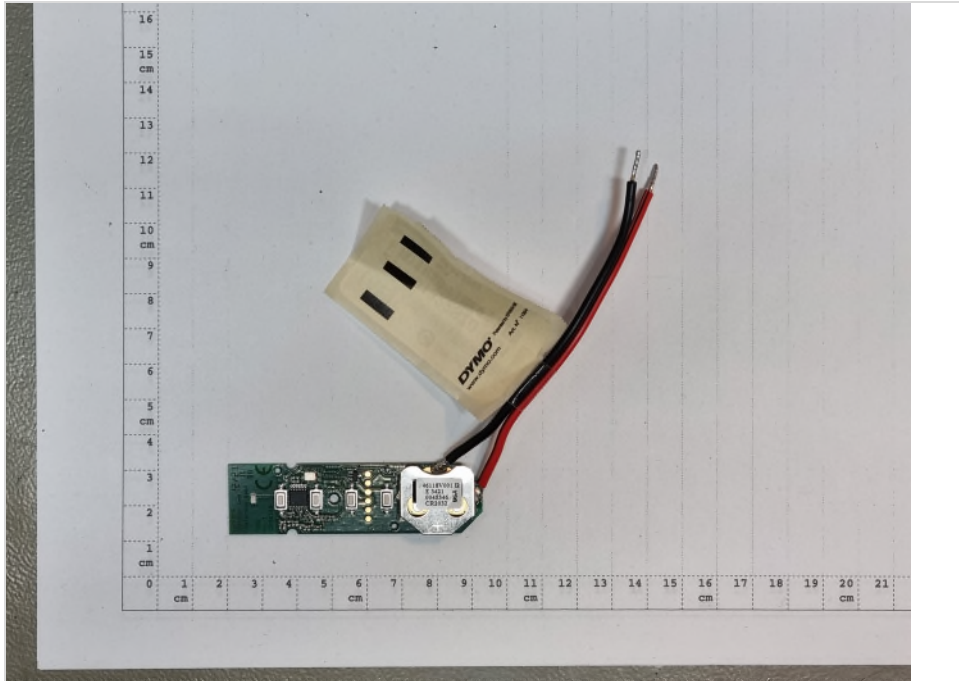
## Annex 3: External photographs 21-1-0132201T01a-A3

<b>Number of pages:</b>	5	<b>Date of Report:</b>	2022-Feb-25
<b>Testing company:</b>	CETECOM GmbH Im Teelbruch 116 45219 Essen Germany Tel. + 49 (0) 20 54 / 95 19-0 Fax: + 49 (0) 20 54 / 95 19-150	<b>Applicant:</b>	SOMMER Antriebs- und Funktechnik GmbH
<b>Product:</b>	Remote Control		
<b>Model:</b>	Pearl		
<b>FCC ID:</b>	T8C202	<b>IC:</b>	6496A-202
<b>Testing has been carried out in accordance with:</b>	<b>FCC Regulations:</b> Title 47 CFR, Chapter I, Subchapter A, Subpart C: §15.231 <b>ISED Regulations:</b> RSS-210, Issue 10   RSS-Gen, Issue 5  Deviations, modifications or clarifications (if any) to above mentioned documents are written in each section under "Test method and limit".		

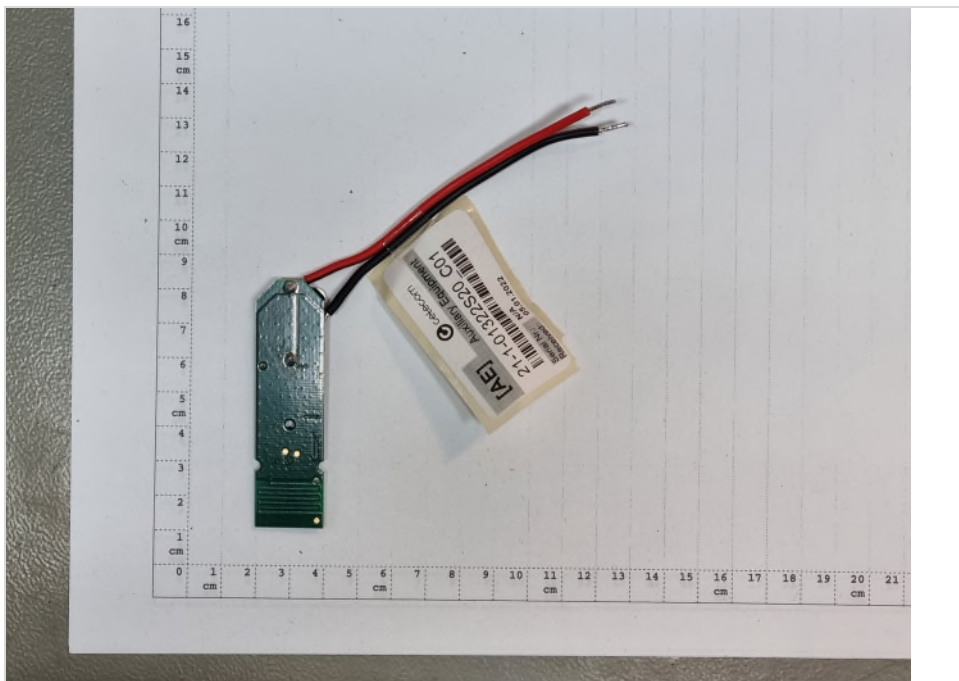
## Table of Contents

1	External photographs of Main device under test (EUT/DUT) .....	3
	Photograph 1 : EUT 1_Top side view .....	3
	Photograph 2 : EUT 1_Bottom side view .....	3
	Photograph 3 : EUT 2_Top side view .....	4
	Photograph 4 : EUT 2_Bottom side view .....	4
	Photograph 5 : EUT 2_Side view .....	5
	Photograph 6 : Batteries.....	5

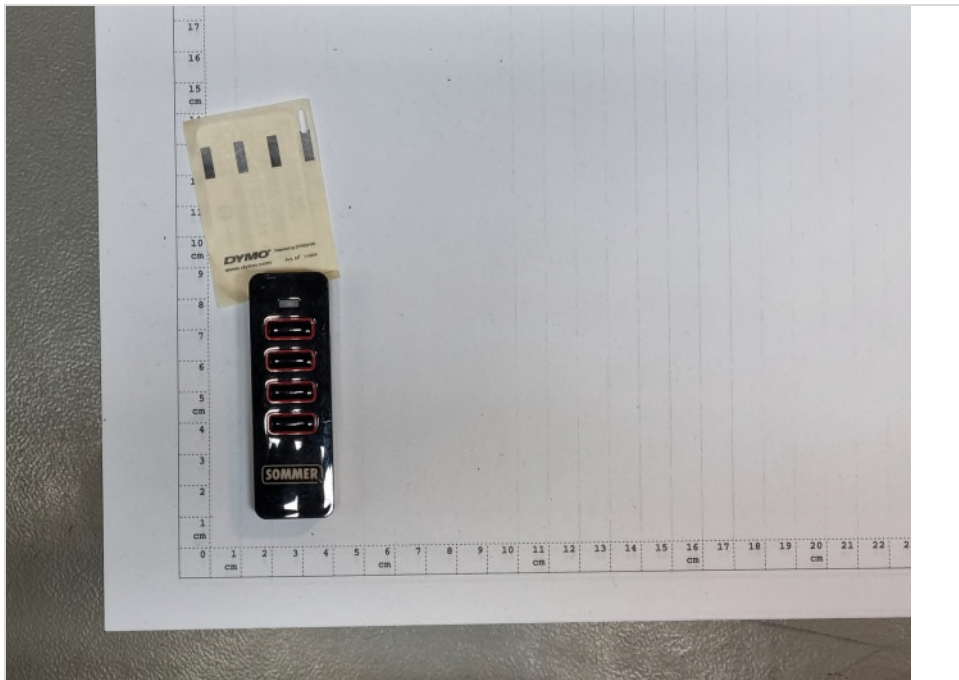
# 1 External photographs of Main device under test (EUT/DUT)



Photograph 1: EUT 1\_Top side view



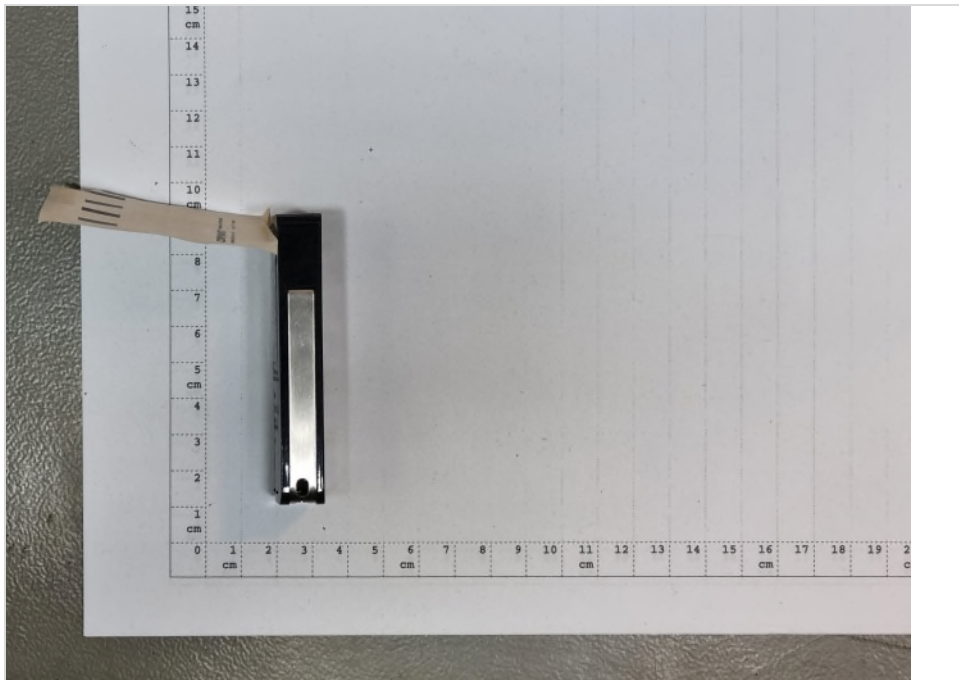
Photograph 2: EUT 1\_Bottom side view



Photograph 3: EUT 2\_Top side view



Photograph 4: EUT 2\_Bottom side view



Photograph 5: EUT 2\_Side view



Photograph 6: Batteries

End Of Annex 3