

US 4-button transmitter

⚠ WARNING

There is a possible risk of injury or even the risk of death if important safety information is not observed and complied with. Observe and comply with all information in this manual and additionally all information in the manual of the drive.

You must also inform all additional users about this manual.

No modifications to this device are allowed.

The operating license expires if modifications are performed on this device that are not described in this manual or authorized by the manufacturer.

This device complies with Part 15 of the FCC Rules. Operation is subject to the following two conditions:

(1) this device may not cause harmful interference, and

(2) this device must accept any interference received, including interference that may cause undesired operation.

Mode of operation

Using this radio remote control, an electrically powered drive can be controlled for opening and closing sectional doors or swinging doors.

Technical specifications

Radio frequency

310 MHz

Temperature range

14 °F to +158 °F
(-10 °C to +70 °C)

Range

Approx. 100 ft (30 m), depending on surrounding conditions

Current consumption

Approx. 10 mA

Battery (supplied)

Type CR 2032, 3 V

Dimensions (slid together)

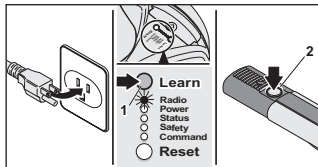
3 7/16" x 15/16" x 11/16"
(87 x 24 x 17 mm)

Weight

Approx. 30 g (including battery)

Program the transmitter

In order to open, close or stop the opener using the transmitter, the opener has to "learn" the code first. The radio code of the transmitter is transmitted to the receiver (inside the control housing).



- ▶ Plug in the power plug into the power outlet or
- ▶ Switch on the electrical supply for a permanent wiring connection (switch on the circuit breaker or fuse).

When the opener is first connected to the mains supply, the opener lighting blinks.

Learning the radio code

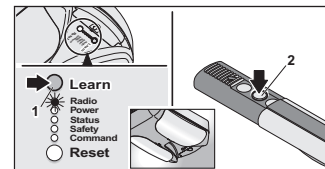
- ▶ Press the learn button (1) once on the control housing.
 - The LED (Radio) is solid.
- ▶ Press a desired transmitter button (2).
 - The LED (Radio) flashes briefly.
 - If the LED (Radio) lights up for a second, the transmitter has been learned.
 - If the LED (Radio) blinks three times, all buttons/storage locations are already occupied.

Programming additional transmitters. Repeat the above steps. A maximum of 20 button/storage locations for each radio receiver are available.

If no radio code is received within 10 seconds, the learning process is interrupted and has to be started again if necessary.

Light function

In order to switch the light on the opener on or off separately using the transmitter, a second transmitter button function has to be "learned in".

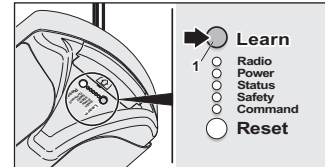


- ▶ Press the learn button (1) on the control housing two times.
 - The LED (Radio) blinks briefly.
- ▶ Press the desired transmitter button (2).
 - When the LED (Radio) lights up for a second, the transmitter has been learned.
 - If the LED (Radio) blinks three times, all buttons/storage locations are already occupied.

Other functions

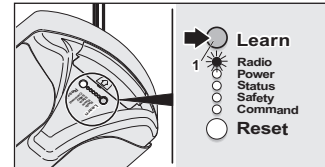
Depending on the DIP switch settings, other functions such as "partial opening" or "defined operation" can be "learned in" for a second transmitter button in the same way. See chapter "Settings".

Aborting the learn process



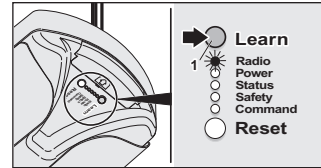
- ▶ Press the learn button (1) on the controller housing until no LED lights up.
 - If no radio code is received within 10 seconds, the learning process is interrupted and has to be started again if necessary.

Deleting a previously learned radio code



- ▶ Press the learn button (1) on the control housing for at least five seconds until the LED (Radio) blinks slowly.
- ▶ Press the desired transmitter button.
 - The LED (Radio) lights up for one second.
 - When the LED (Radio) turns off, the radio code of this transmitter button is deleted.

Deleting all previously learned radio codes



- ▶ Press the learn button (1) and hold for approx. 60 sec. until the LED (Radio) turns off.
 - All radio codes have been deleted.

Operation

⚠ WARNING

There is a possible risk of injury or death if you do not observe and comply with the following information. Observe and comply with all listed instructions before operating.

Only operate the transmitter when you have direct line of sight to the door and no persons or objects are located in the area of the door's motion.

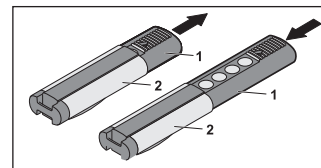
Only pass through the garage opening after the garage door has opened completely.

Store the transmitter in a safe place to prevent unwanted operation for example, by children.

Do not use the transmitter in areas with sensitive radio communications or systems (for example: airports, hospitals).

The remote has an integrated clip so that you can carry it as you would a pen in your shirt pocket for example.

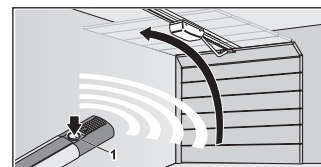
When closed, the transmitter is protected by a stainless steel case to prevent an unintended operation.



- ▶ To access the buttons, slide the transmitter body (1) out of the stainless steel case (2). There are positions for each button (a total of 4 buttons).
- ▶ To close the transmitter body (1), slide it back into the stainless steel case (2) up to the stop position.

Opening, closing, and stopping the door

In order to operate the opener using the transmitter, this opener function first has to "learn in" the code of a particular transmitter. See "Program the transmitter".



- ▶ To open and close the door, press the corresponding button on the transmitter one time (e.g. button 1). Depending on the starting position, the door either opens or closes.
 - The light switches off automatically after 180 seconds.
- ▶ To stop the door, press the corresponding transmitter button during the open/close procedure. Pressing the transmitter button again causes the door to move back to its respective starting position.

Turning the light on or off

In order to switch the light on the opener on or off separately using the transmitter, a second transmitter button function has to be "learned in".

See "Program the transmitter".

- ▶ Press the corresponding transmitter button once to switch the light on.
 - The light is switched on and switches off automatically after 180 seconds.
- ▶ Press the corresponding transmitter button once to switch the light off. If the light was automatically switched on during the opener movement, it can only be switched off after the opener movement has completed.

Replacing transmitter battery

⚠ WARNING

There is a possible risk of injury or death if you do not observe and comply with the following information. Observe and comply with all listed instructions before handling the battery.

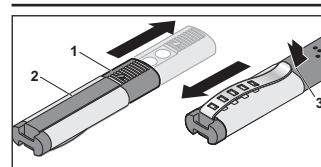
Do not store batteries where children can reach them. A child could play with them and accidentally swallow a battery. Call a doctor immediately if a battery is accidentally swallowed.

Never throw batteries into fire. As they can explode.

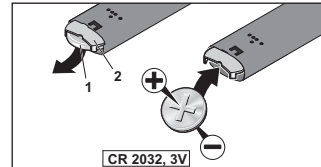
Never dispose batteries together with household waste. Leaking batteries can damage the environment. Please dispose of batteries properly according to your local regulations.

Pack the batteries individually for storage or for disposal. Batteries should never come into contact with metal objects, as they can ignite, discharge, or get damaged.

Only replace batteries with batteries specified in this manual.



- ▶ Slide the transmitter body (1) out of the stainless steel case (2) up to the stop position.
- ▶ Pull the transmitter (1) completely out of the stainless steel case (2) by applying strong pressure at the location indicated in the diagram (3) (latch).

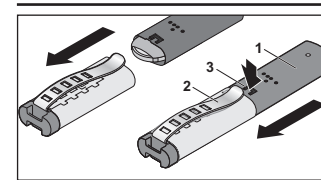


- ▶ Remove the battery (1) from the retainer (2) and install a new battery (type CR 2032, 3 V) in the same position. + side of the battery to the retainer base! (as shown in the diagram)
- ▶ Before sliding the unit back together, check if the battery was inserted correctly.
- ▶ Press a button on the transmitter. The LED must light up. If the LED does not light up, the battery must be installed in the opposite direction.

⚠ WARNING

There is a possible risk of injury when assembling the transmitter. You could pinch your fingers when assembling.

Proceed carefully when inserting the transmitter body into the stainless steel case.



- ▶ Slide the transmitter body (1) into the stainless steel case (2). Press the latch (3) downwards.

Placing out of operation and disposal

Remove the battery before you take the remote control out of service.

Please dispose of remote control in an environmentally proper manner according to your local regulations.

Battery disposal

⚠ WARNING

There is a possible risk of injury or death if you do not observe and comply with the following information. Therefore, observe and comply with all listed instructions before disposing of batteries.

Never throw batteries into fire. As they can explode.

Never dispose batteries with your household waste. Leaking batteries can damage the environment. Please dispose batteries properly according to your local regulations.

Pack the batteries individually for disposal. Batteries should never come into contact with metal objects, they could ignite, discharge or get damaged.

Care and maintenance

The transmitter can be cleaned with a dry lint-free cloth when necessary.

Troubleshooting

See "Troubleshooting" chapter in the manual for the drive.

Accessories

Retainer for transmitter.

You can use this holder for storing the transmitter in a car or at a location on the garage inner wall where it won't get lost.

