
	<b>Type TX03-310-4</b> <b>FCC ID T8C001 / IC: 6496A-001</b>	
Abteilung:  <b>Entwicklung / (Development)</b>		erstellt am:  <b>28.06.2011</b>
erstellt von:  <b>Schwarz, Dominik</b>	Verteiler:	Seite <b>1</b> von <b>3</b>

## TX03-310-x: Transmitter family overview

The PCB of the 4-channel transmitter TX03-310-4, which was measured according to the FCC and IC rules, shall be used in 3 different housings.

### 4-channel transmitter TX03-310-4:

The measured product.

### 2-channel transmitter TX02-310-2:

Portable transmitter with the same housing as the 4-channel, but the sliding metal part is replaced by a fixed plastic part.



The same PCB is used with the following differences in component placement:

- button S3 and S4 are not mounted (n.m.)
- programming connector X4 is not mounted.

### 3-channel transmitter TX02-310-3:

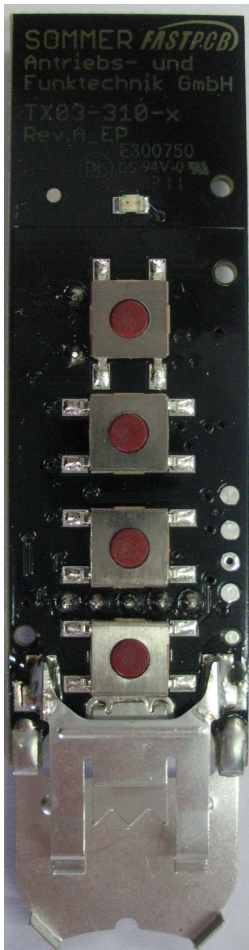
Wall-mount housing with the same PCB with the following differences in component placement:

- Button S5 is mounted instead of S2 at another position, button S3 is not mounted.
- The battery holder is not mounted.

	<b>Type TX03-310-4</b> <b>FCC ID T8C001 / IC: 6496A-001</b>	
Abteilung:  <b>Entwicklung / (Development)</b>		erstellt am:  <b>28.06.2011</b>
erstellt von:  <b>Schwarz, Dominik</b>	Verteiler:	Seite <b>2</b> von <b>3</b>

**Front view:**

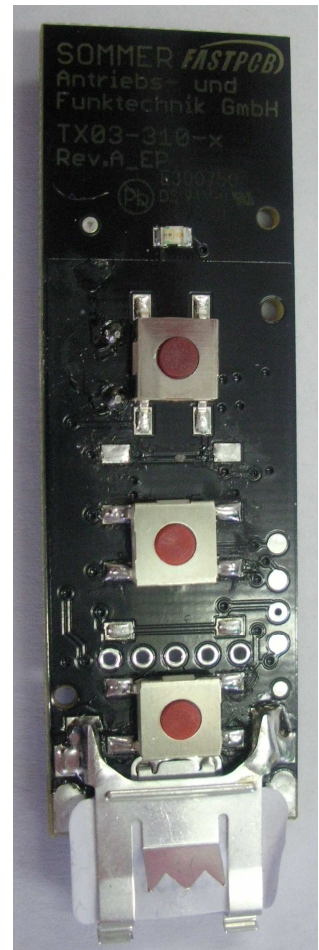
TX03-310-4  
4-channel version





TX03-310-2  
2-channel version



TX03-310-3  
3-channel version



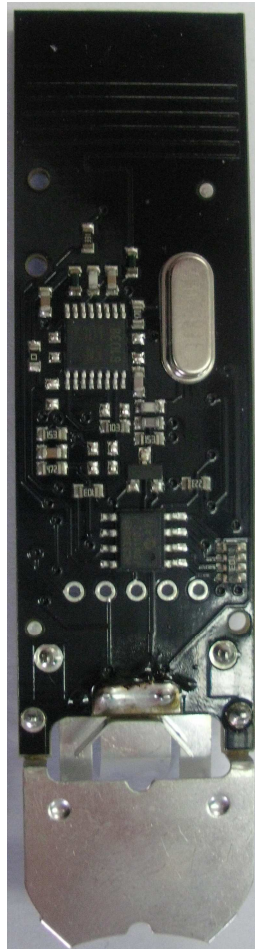
	<b>Type TX03-310-4</b> <b>FCC ID T8C001 / IC: 6496A-001</b>	
Abteilung:  <b>Entwicklung / (Development)</b>		erstellt am:  <b>28.06.2011</b>
erstellt von:  <b>Schwarz, Dominik</b>	Verteiler:	Seite <b>3</b> von <b>3</b>

**Rear view:**

TX03-310-4  
4-channel version



TX03-310-2  
2-channel version



TX03-310-3  
3-channel version

