

**APPENDIX 1 : Photographs of test setup**

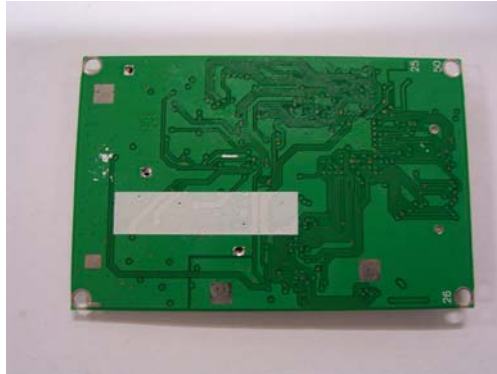
---

**Photograph of EUT**

**(1) Module  
Front**



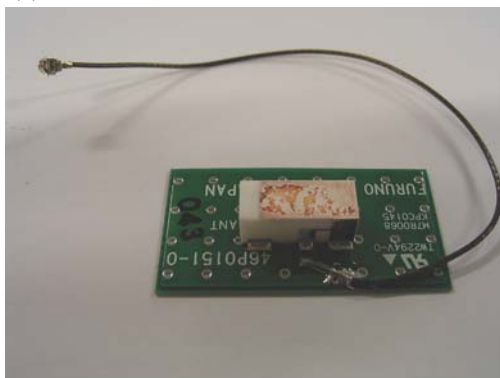
**Back**



**Front (Remove Cover )**



**(2) Antenna**



---

**UL Apex Co., Ltd.**  
**Head Office EMC Lab.**  
4383-326 Asama-cho, Ise-shi, Mie-ken 516-0021 JAPAN  
Telephone: +81 596 24 8116  
Facsimile: +81 596 24 8124

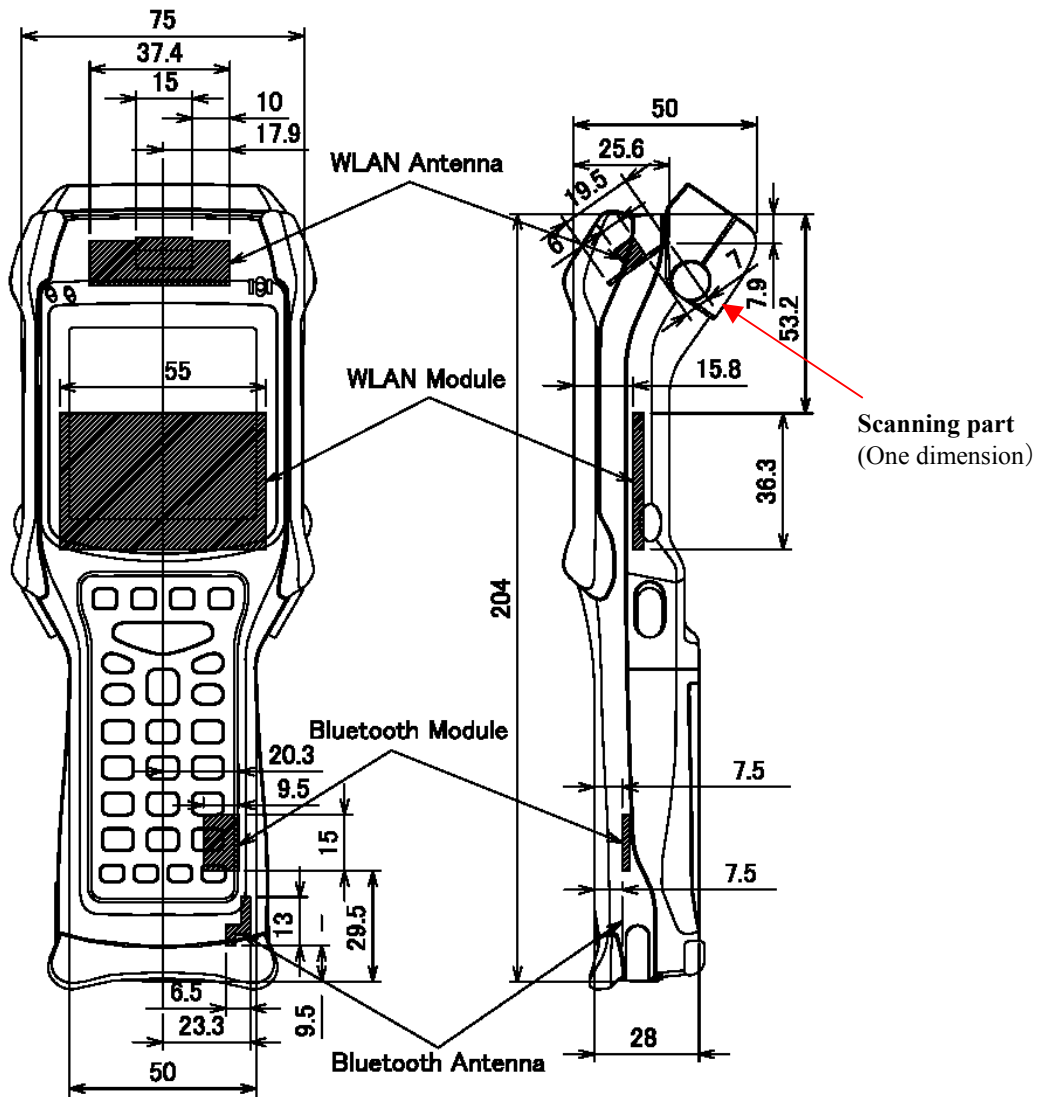
**Photograph of host device**



**Antenna location**

The diagram of the Handy Terminal is shown as the following.

Model No. PI-13500-W



**UL Apex Co., Ltd.**

**Head Office EMC Lab.**

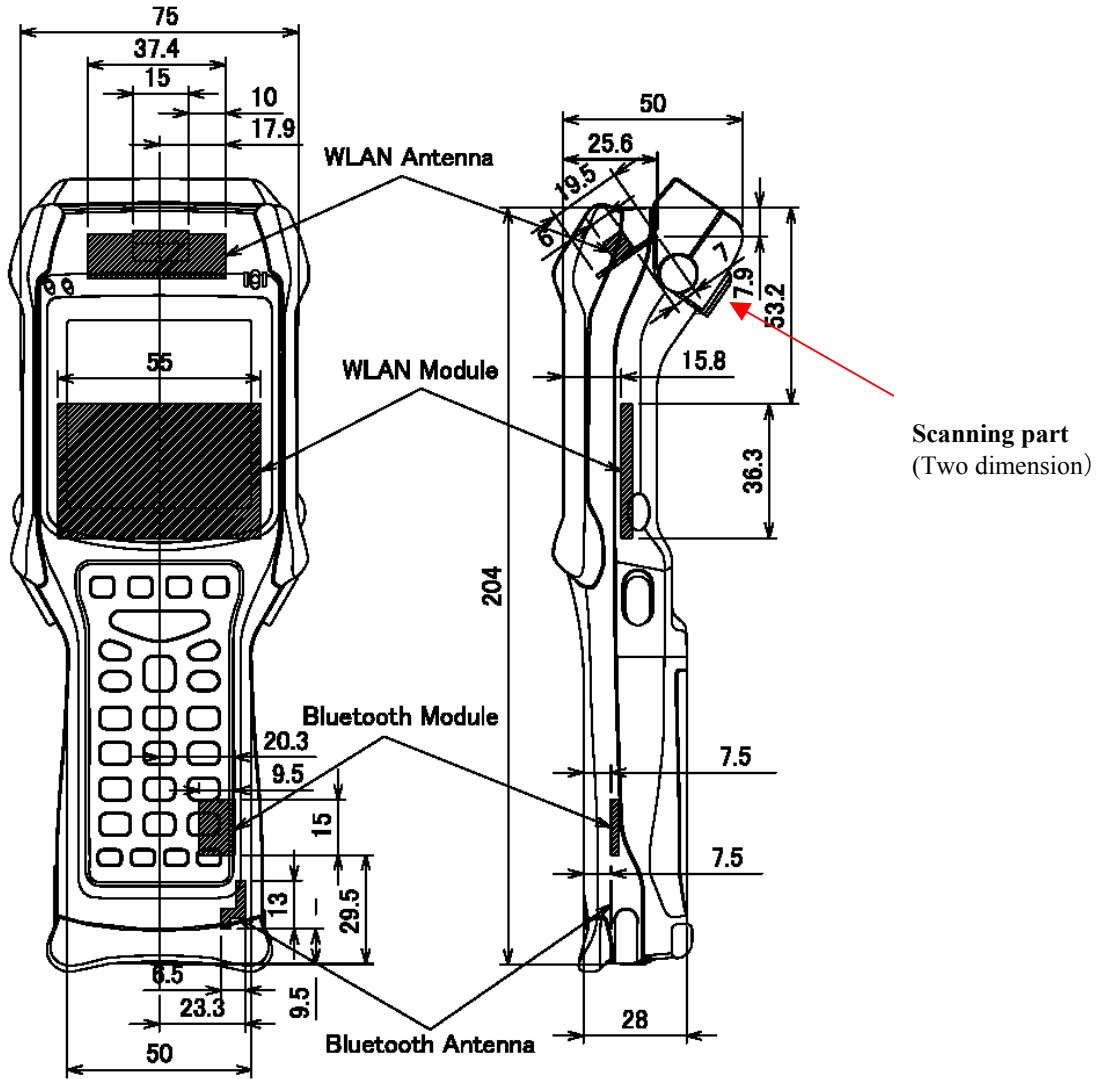
4383-326 Asama-cho, Ise-shi, Mie-ken 516-0021 JAPAN

Telephone: +81 596 24 8116

Facsimile: +81 596 24 8124

MF060a (01.06.05)

Model No. PI-13503-W

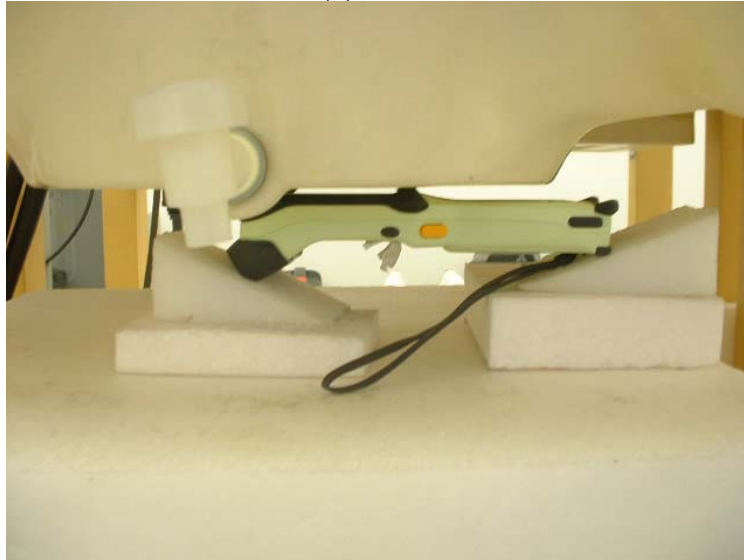


UL Apex Co., Ltd.  
Head Office EMC Lab.  
4383-326 Asama-cho, Ise-shi, Mie-ken 516-0021 JAPAN  
Telephone: +81 596 24 8116  
Facsimile: +81 596 24 8124

MF060a (01.06.05)

**Photograph of test setup**

**(1) Front**



(2) Back



(3) Left Side





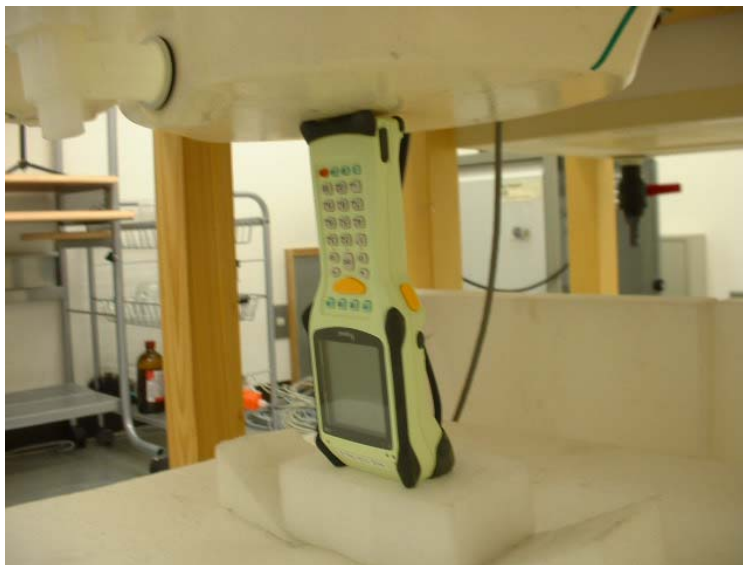
**(4) Right Side**



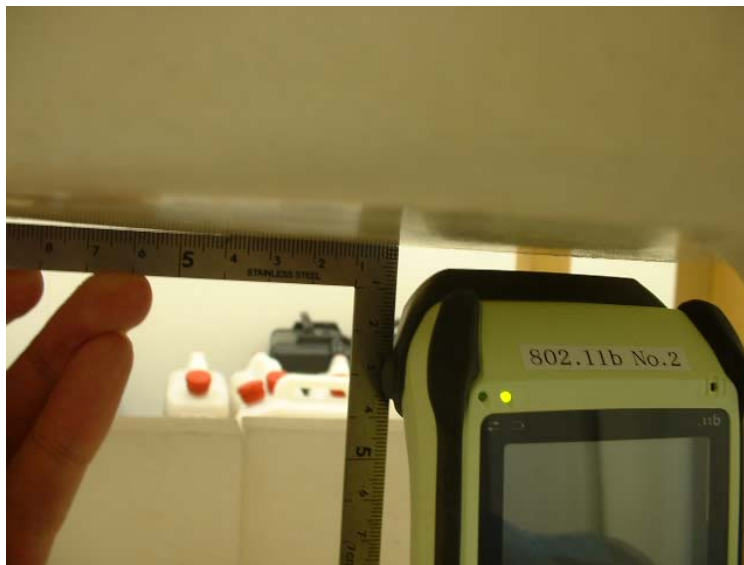
(5) Top



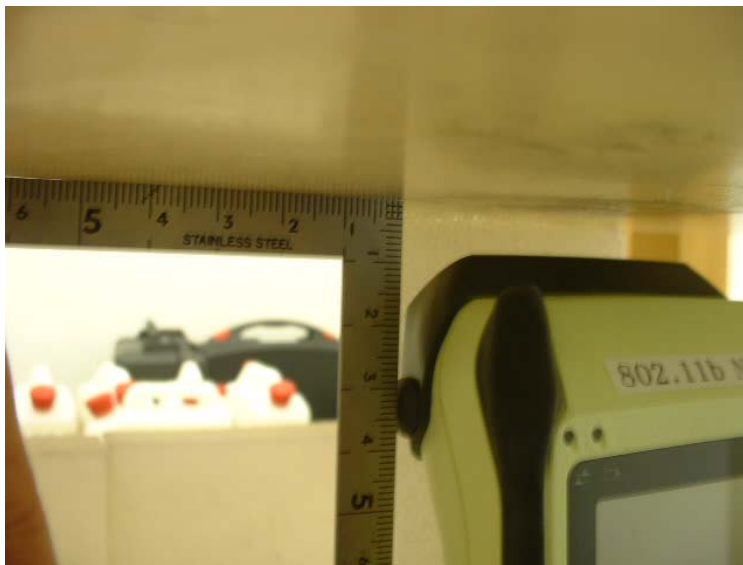
**(6) Bottom**



(7-a) Top (Separation 5mm)



**(7-b) Top (Separation 10mm)**



**(7-c) Top (Separation 15mm)**

