

Installation Description

(This Installation Manual is not provided to the consumer.)

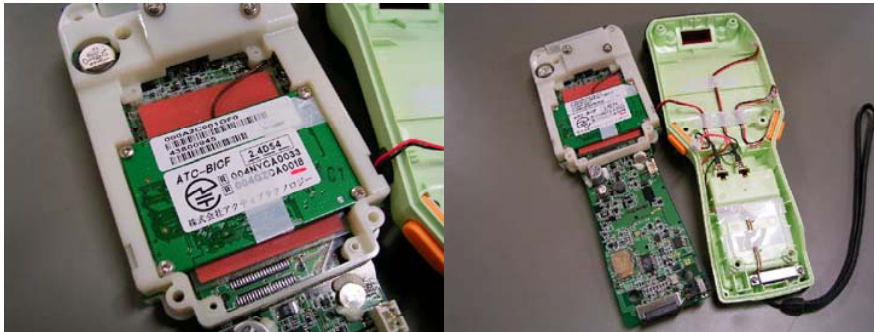
WLAN Module (Model: ATC-BICF) shall be installed in a portable Configuration Handy Terminal and any mobile Configuration final product.

When ATC-BICF is installed in the final product, we as OEM shall consider the following points;

1. Since ATC-BICF owns its FCC ID, we shall affix an exterior label on the outside of the final product if the FCC ID is not visible. The exterior label shall use wording such as either "Contains Transmitter Module FCC ID: T87SS22BXXXM" or "Contains FCC ID: T87SS22BXXXM".

2. ATC-BICF complies with requirements of sub-sections 15.203, 15.205, 15.207 and 15.247 in FCC Rules Part 15. We shall install ATC-BICF in accordance with their requirements. ATC-BICF complies with requirements of the sub-section 2.1091 and 2.1093. When installers install ATC-BICF into a product, they shall ensure that the public is not exposed to radio frequency energy levels in excess of the Commission's guidelines in accordance with the sub-section 15.247(i) in FCC Rules Part 15. For portable use, Installation condition of the wireless LAN module become worse than tested condition, reevaluation of Handy Terminal by the manufacturer is required. For mobile use, the wireless LAN module can be equipped on any device, if the distance between radiator and person's body keep at least 20cm or more.

3. Attached photos and drawings are an example of location of ATC-BICF on the final product. We do not exhibit this information to end-users or website. Because, users may obtain an idea of modifying this module from the information.



【FCC Users Manual Statement】

FCC WARNING

Changes or modifications not expressly approved by the party responsible for compliance could void the user's authority to operate the equipment.

Properly shielded a grounded cables and connectors must be used for connection to host computer and / or peripherals in order to meet FCC emission limits.

This transmitter must not be co-located or operated in conjunction with any other antenna or transmitter.

FCC Manual Statement for Mobile Use

This equipment complies with FCC radiation exposure limits set forth for uncontrolled equipment and meets the FCC radio frequency (RF) Exposure Guidelines in Supplement C to OET65. This equipment should be installed and operated with at least 20cm and more between the radiator and person's body (excluding extremities: hands, wrists, feet and legs).

FCC Manual Statement for Portable Use

The available scientific evidence does not show that any health problems are associated with using low power wireless devices. There is no proof, however, that these low power wireless devices are absolutely safe. Low power Wireless devices emit low levels of radio frequency energy (RF) in the microwave range while being used. Whereas high levels of RF can produce health effects (by heating tissue), exposure to low-level RF that does not produce heating effects causes no known adverse health effects. Many studies of low-level RF exposures have not found any biological effects. Some studies have suggested that some biological effects might occur, but such findings have not been confirmed by additional research. [Handy Terminal (PI-13500-W)] has been tested and found to comply with FCC radiation exposure limits set forth for an uncontrolled equipment and meets the FCC radio frequency (RF) Exposure Guidelines in Supplement C to OET65. The maximum SAR levels tested for [Handy Terminal (PI-13500-W)] has been show to be 0.564W/kg at Body.

This device complies with Part 15 of the FCC Rules. Operation is subject to the following two conditions: (1) this device may not cause harmful interference, and (2) this device must accept any interference received, including interference that may cause undesired operation.