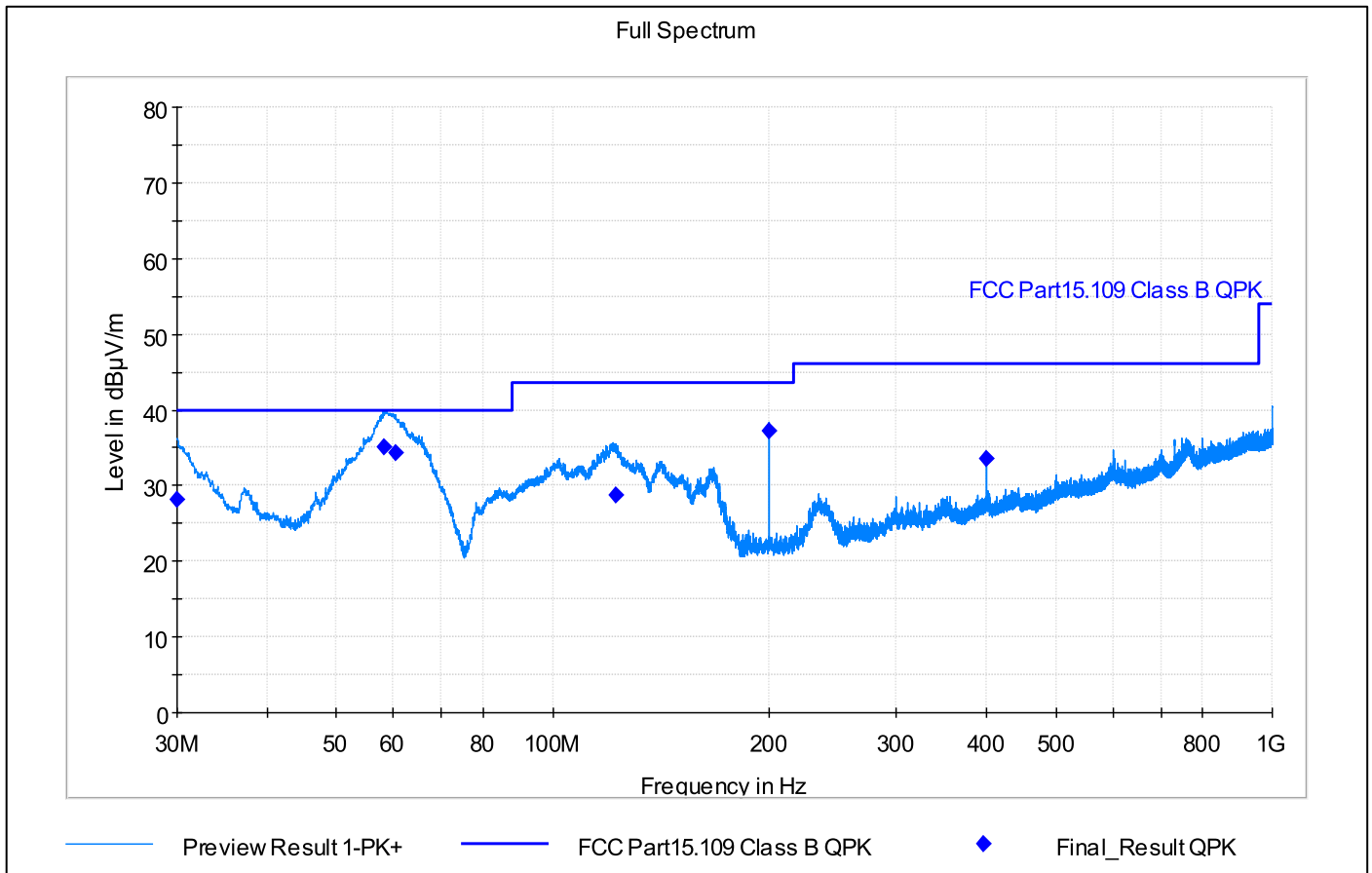
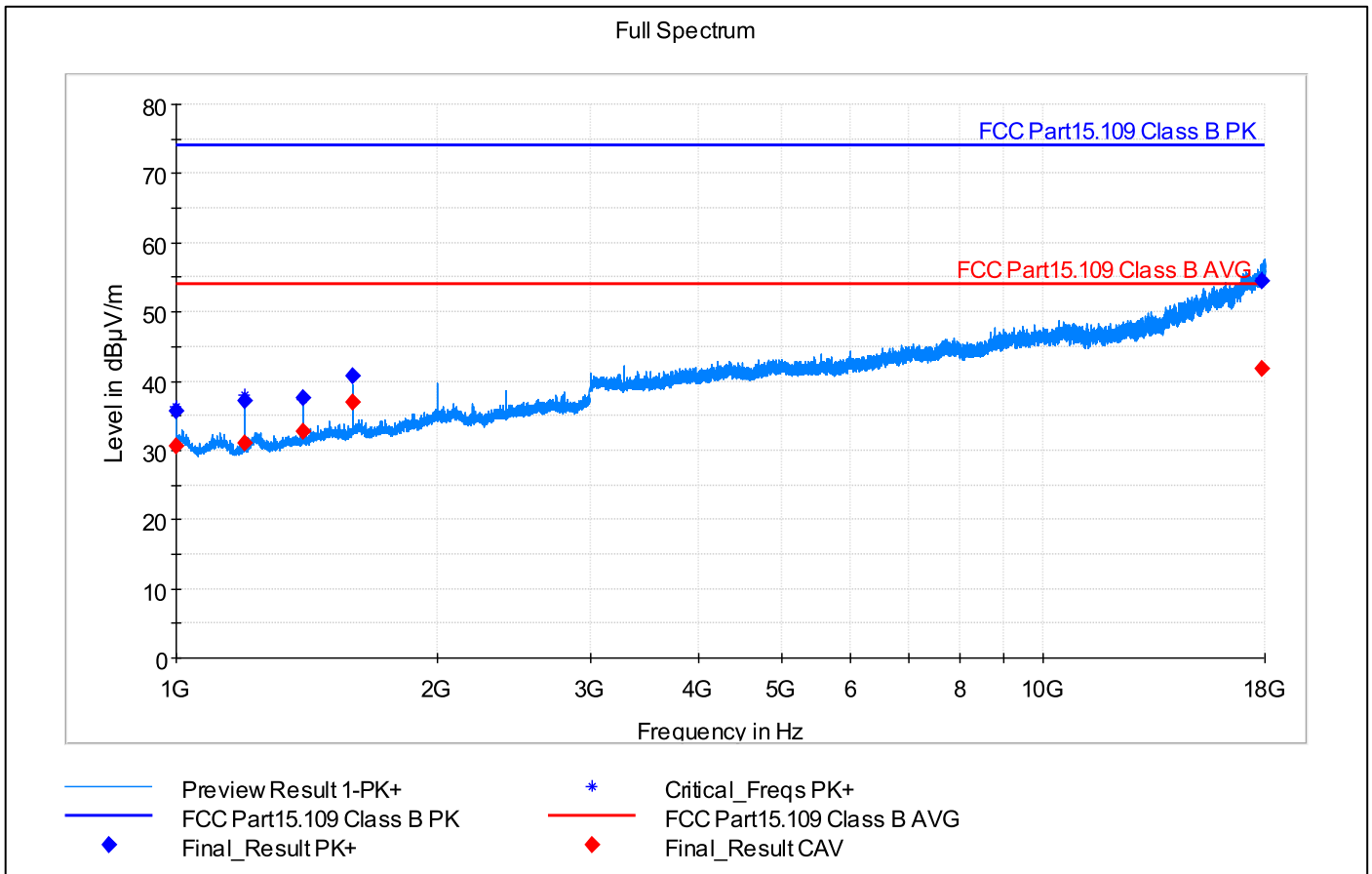


WLAN 802.11b/g/n station mode 30 MHz – 1 GHz



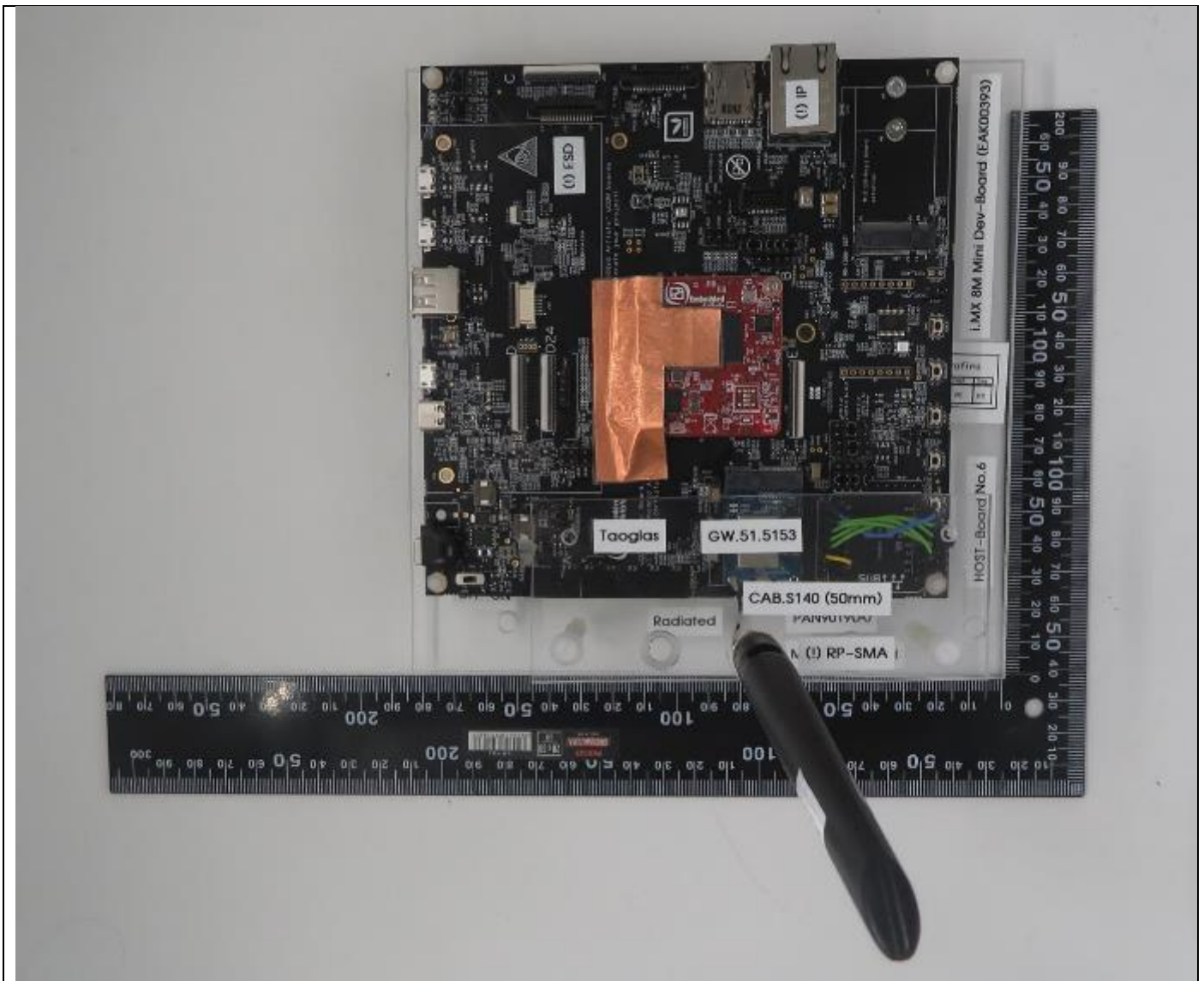
Frequency (MHz)	MaxPeak (dBµV/m)	CAverage (dBµV/m)	Limit (dBµV/m)	Margin (dB)	Meas, Time (ms)	Bandwidth (kHz)	Height (cm)	Pol	Azimuth (deg)	Corr, (dB/m)	Comment
30	28,20	40,00	11,80	15000,00	120	103	V	141	0	17,40	PASS
58	35,14	40,00	4,86	15000,00	120	124	V	109	0	20,30	PASS
60	34,34	40,00	5,66	15000,00	120	101	V	138	0	19,80	PASS
122	28,65	43,50	14,85	15000,00	120	104	V	118	0	17,50	PASS
200	37,30	43,50	6,20	15000,00	120	100	V	240	0	20,10	PASS
400	33,47	46,00	12,53	15000,00	120	126	V	44	0	25,20	PASS

WLAN 802.11b/g/n station mode 1 – 18 GHz

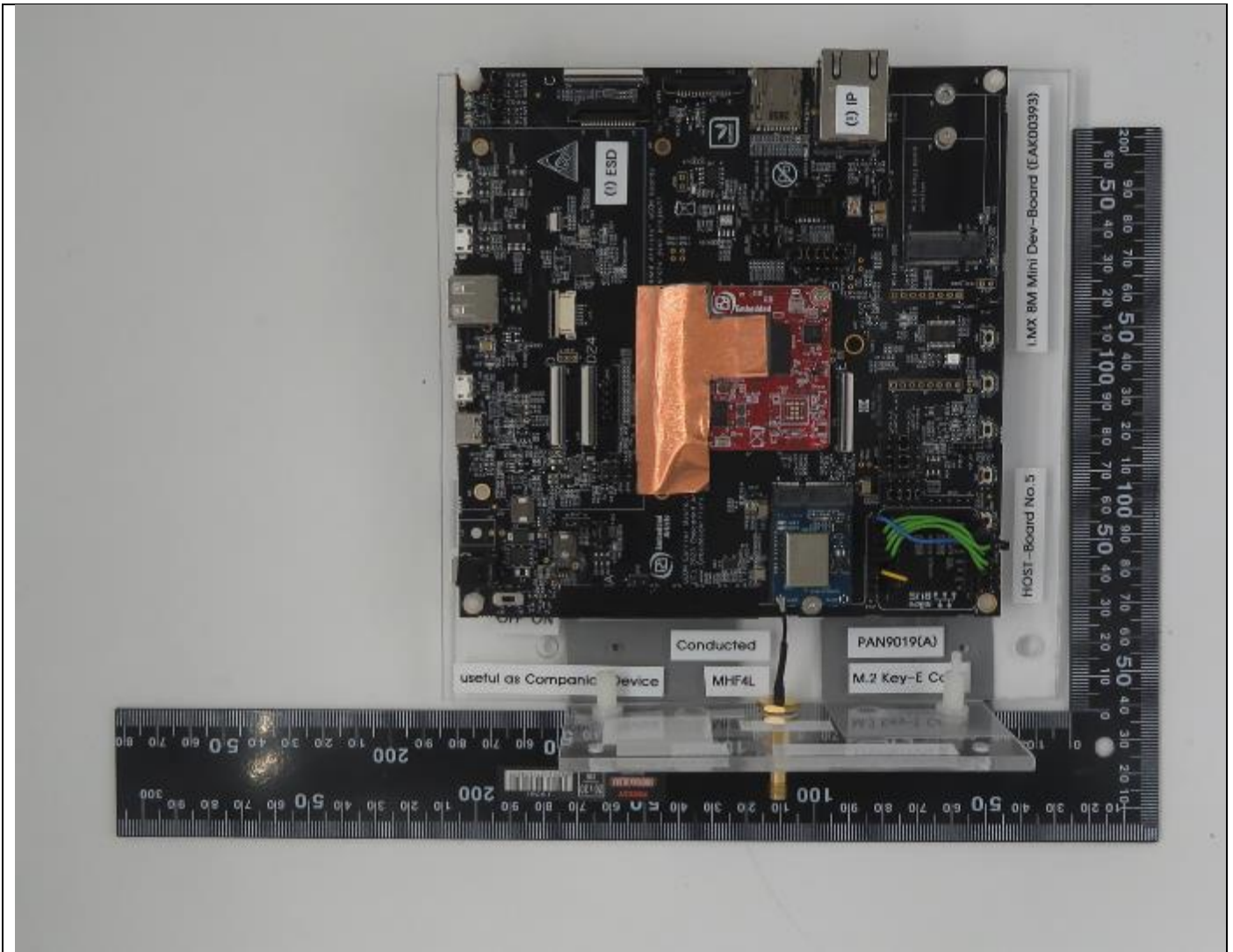


Frequency (MHz)	MaxPeak (dBµV/m)	CAverage (dBµV/m)	Limit (dBµV/m)	Margin (dB)	Meas, Time (ms)	Bandwidth (kHz)	Height (cm)	Pol	Azimuth (deg)	Corr, (dB/m)	Comment
1000,00	35,74	---	74	38,26	500	1000	162	V	205	-9,9	PASS
1000,00	---	30,70	54	23,30	500	1000	162	V	205	-8,1	PASS
1200,00	37,23	---	74	36,77	500	1000	173	H	300	-7,6	PASS
1200,00	---	30,95	54	23,05	500	1000	173	H	300	-7,6	PASS
1400,00	37,48	---	74	36,52	500	1000	105	V	133	-6,5	PASS
1400,00	---	32,67	54	21,33	500	1000	105	V	133	-6,5	PASS
1600,00	40,74	---	74	33,26	500	1000	242	V	50	-4,8	PASS
1600,00	---	37,03	54	16,97	500	1000	242	V	50	-4,8	PASS
17888,75	---	41,79	54	12,21	500	1000	98	H	109	38,7	PASS
17888,75	54,55	---	74	19,45	500	1000	98	H	109	38,7	PASS

22. Photographs – Equipment External



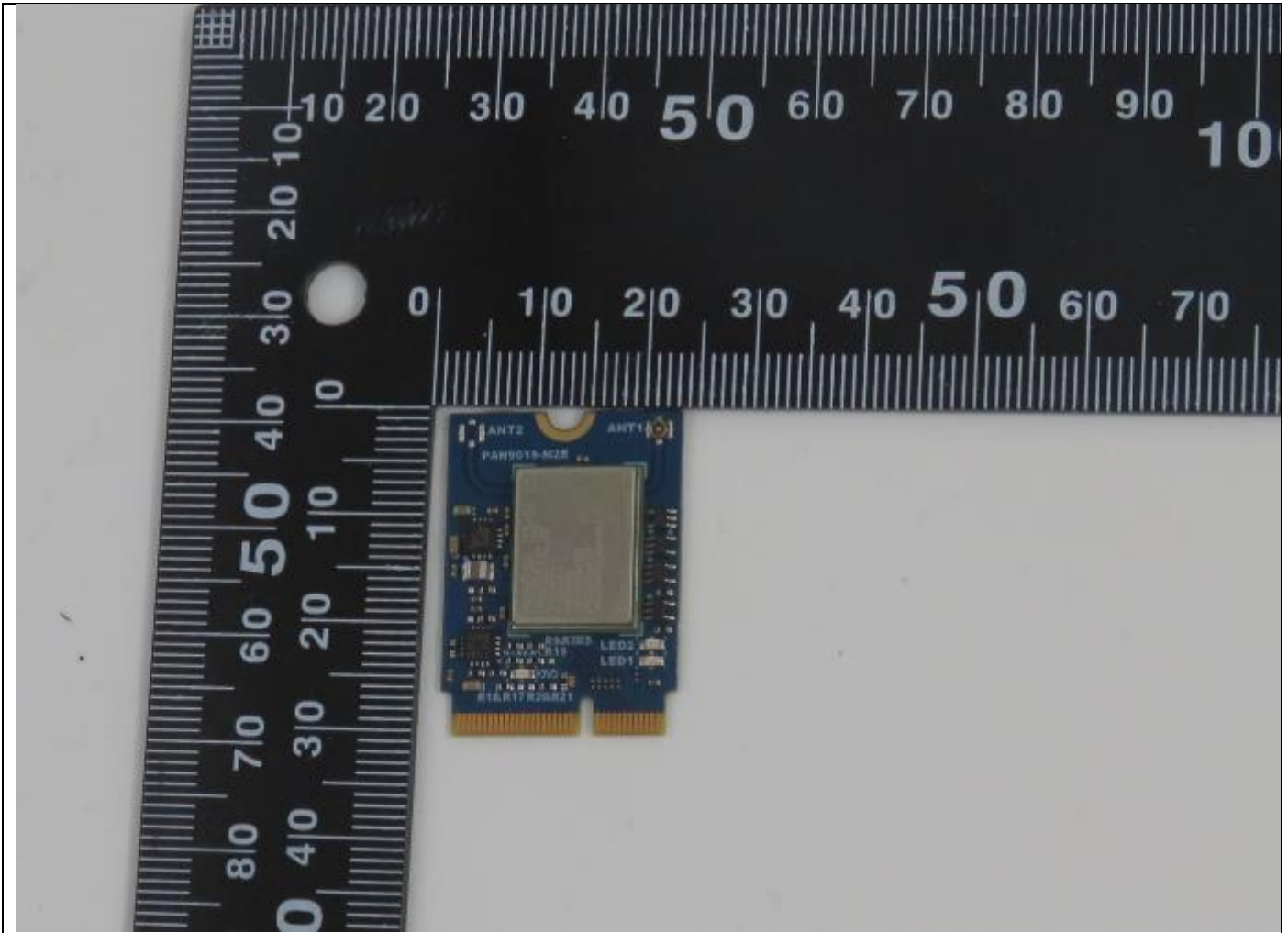
Picture 1, Host board with EUT Top view



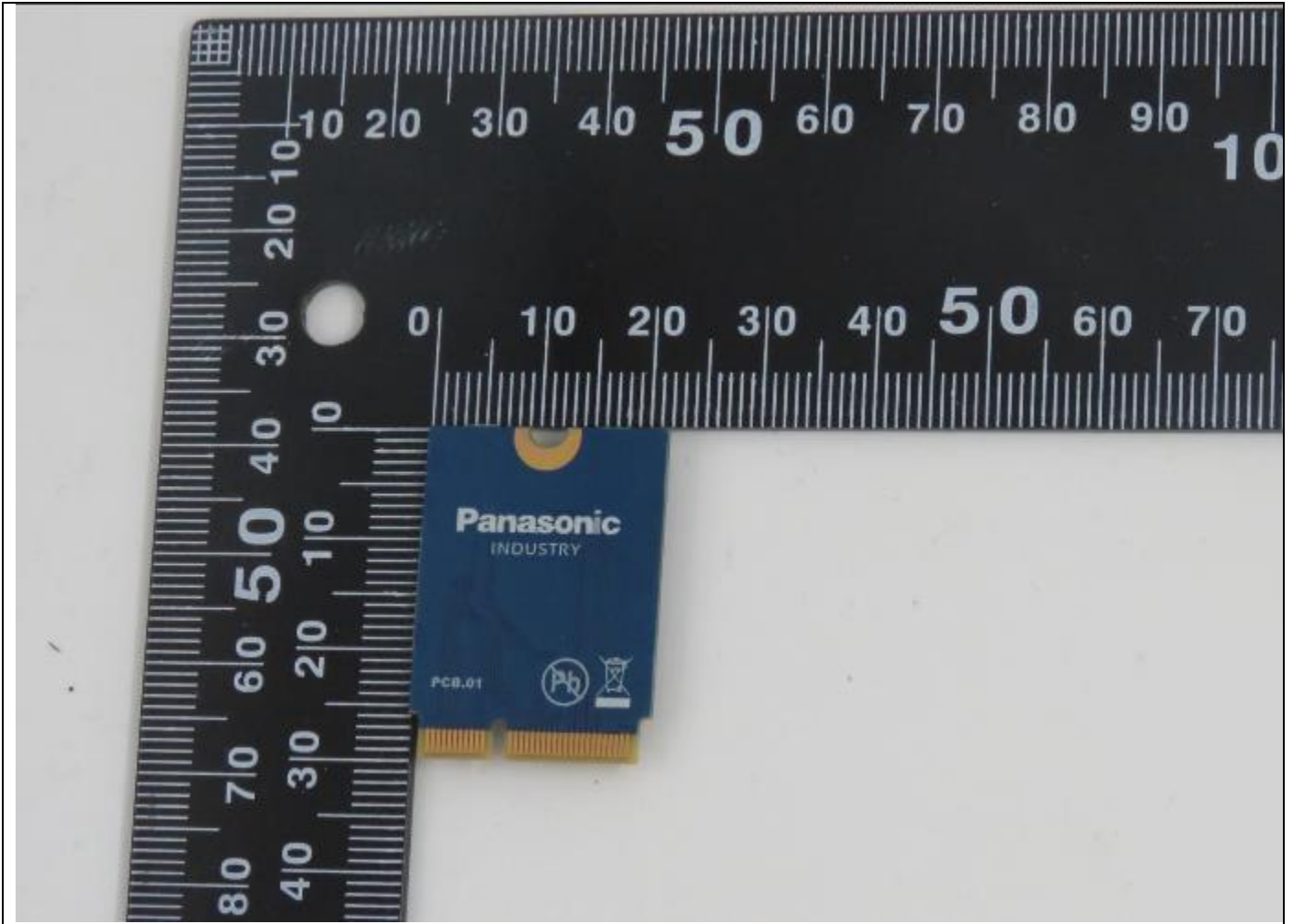
Picture 2, Host board with conducted RF EUT



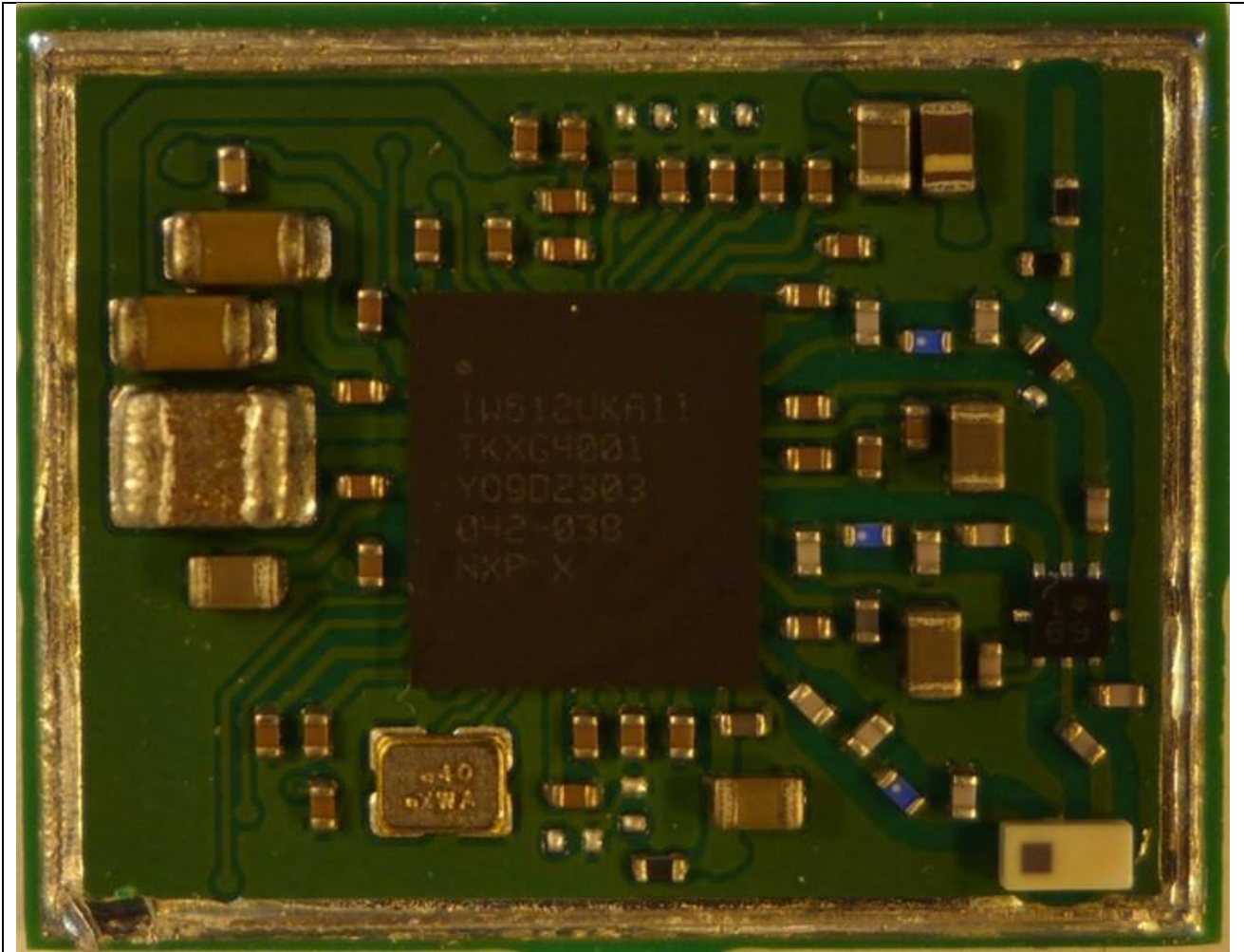
Picture 3, Radiated EUT with auxiliary equipment



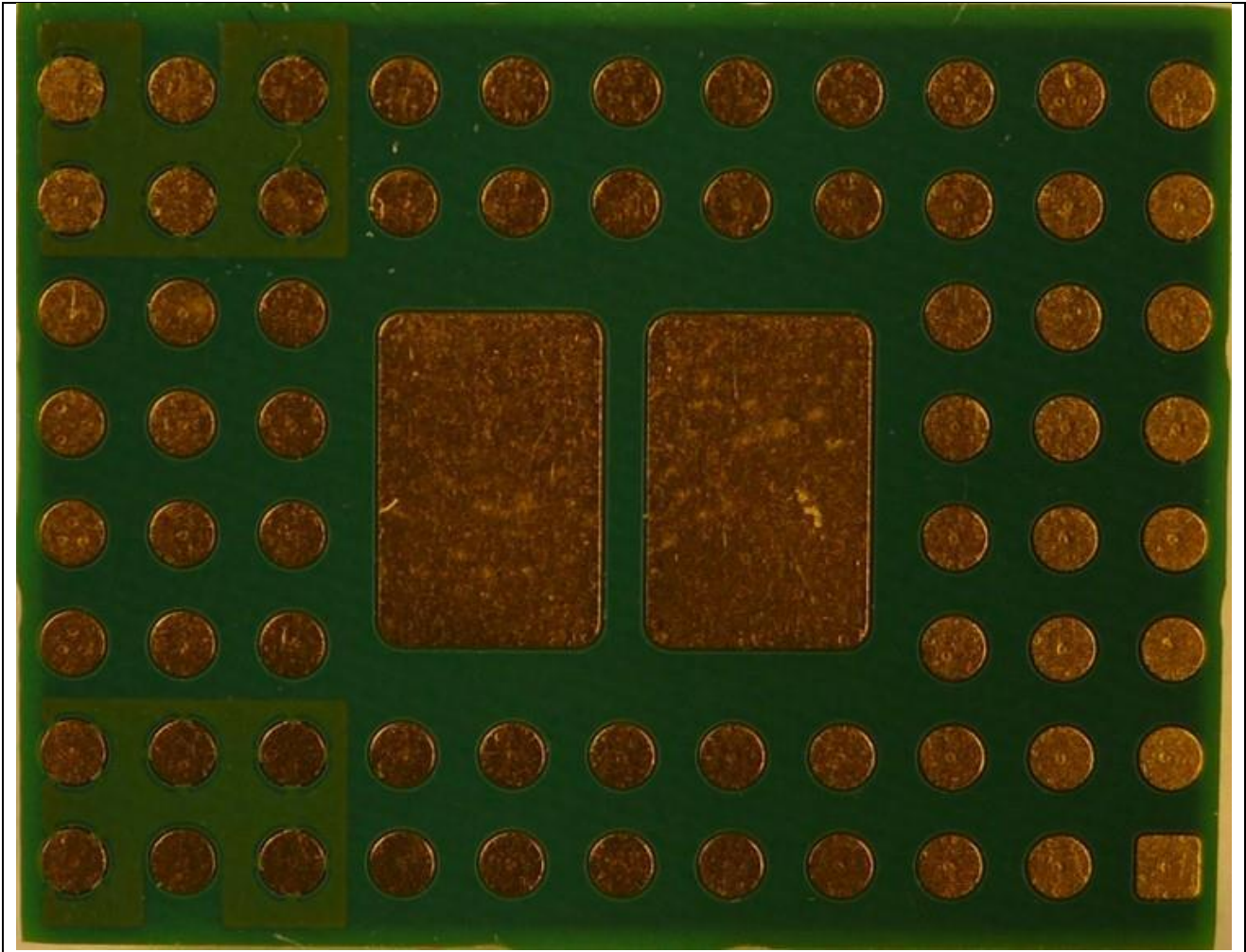
Picture 4, EUT PCB top



Picture 5, EUT PCB bottom

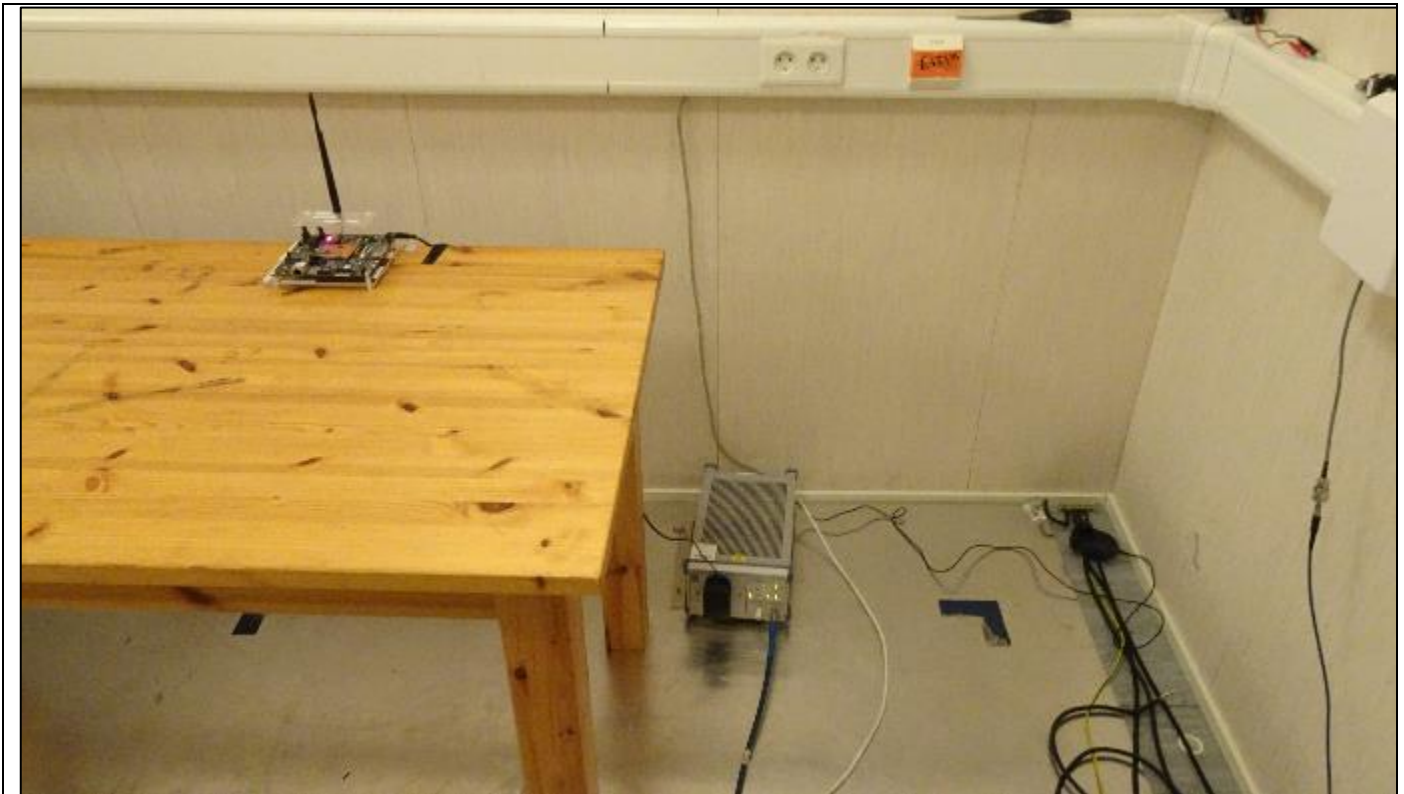


Picture 6, EUT Module internal



Picture 7, EUT Module bottom

23. Photographs – test setups



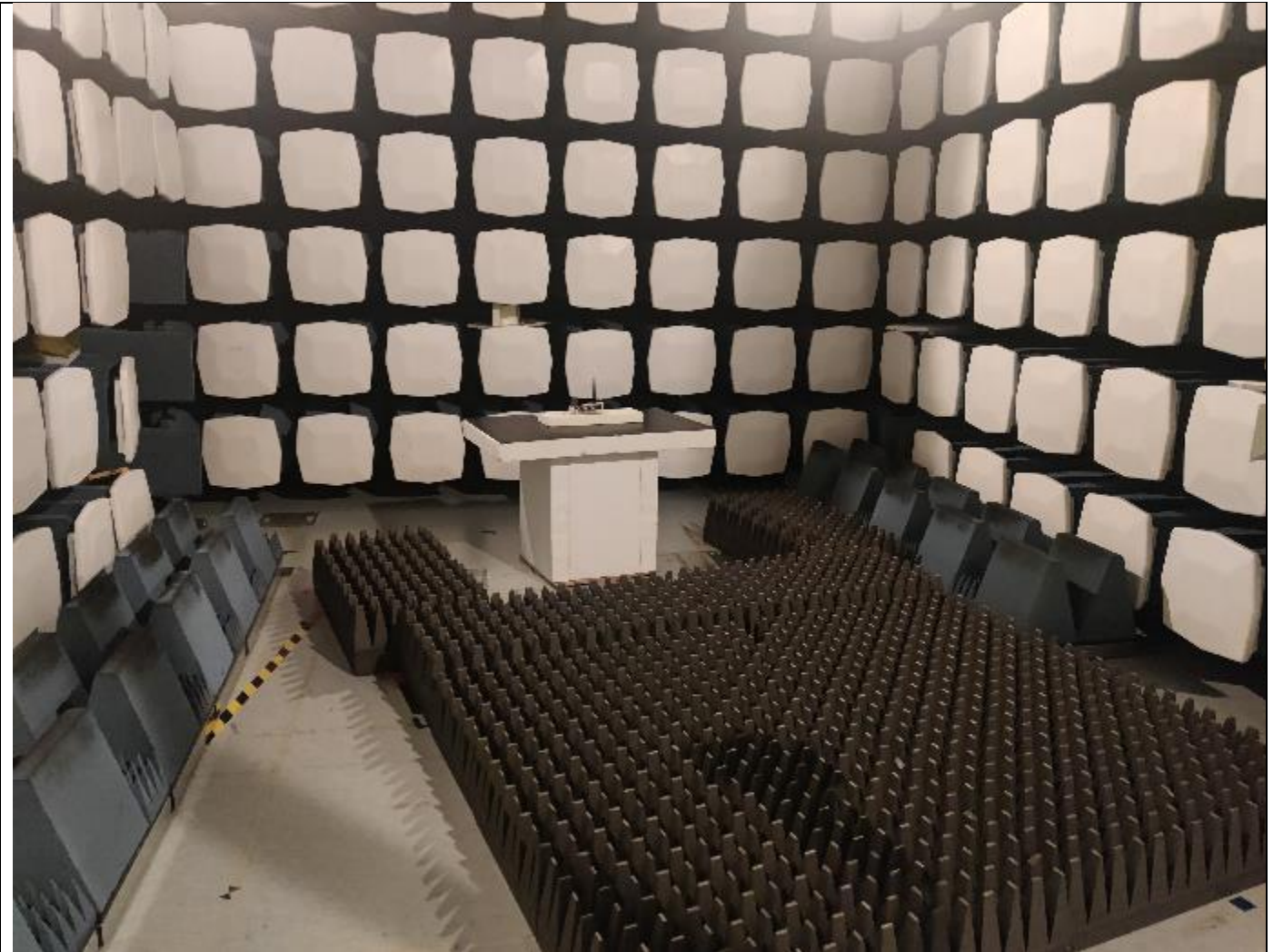
Picture 8, AC Power Line Conducted Emissions



Picture 9, Radiated Spurious Emissions, common setup, TX and RX 30 - 1000 MHz



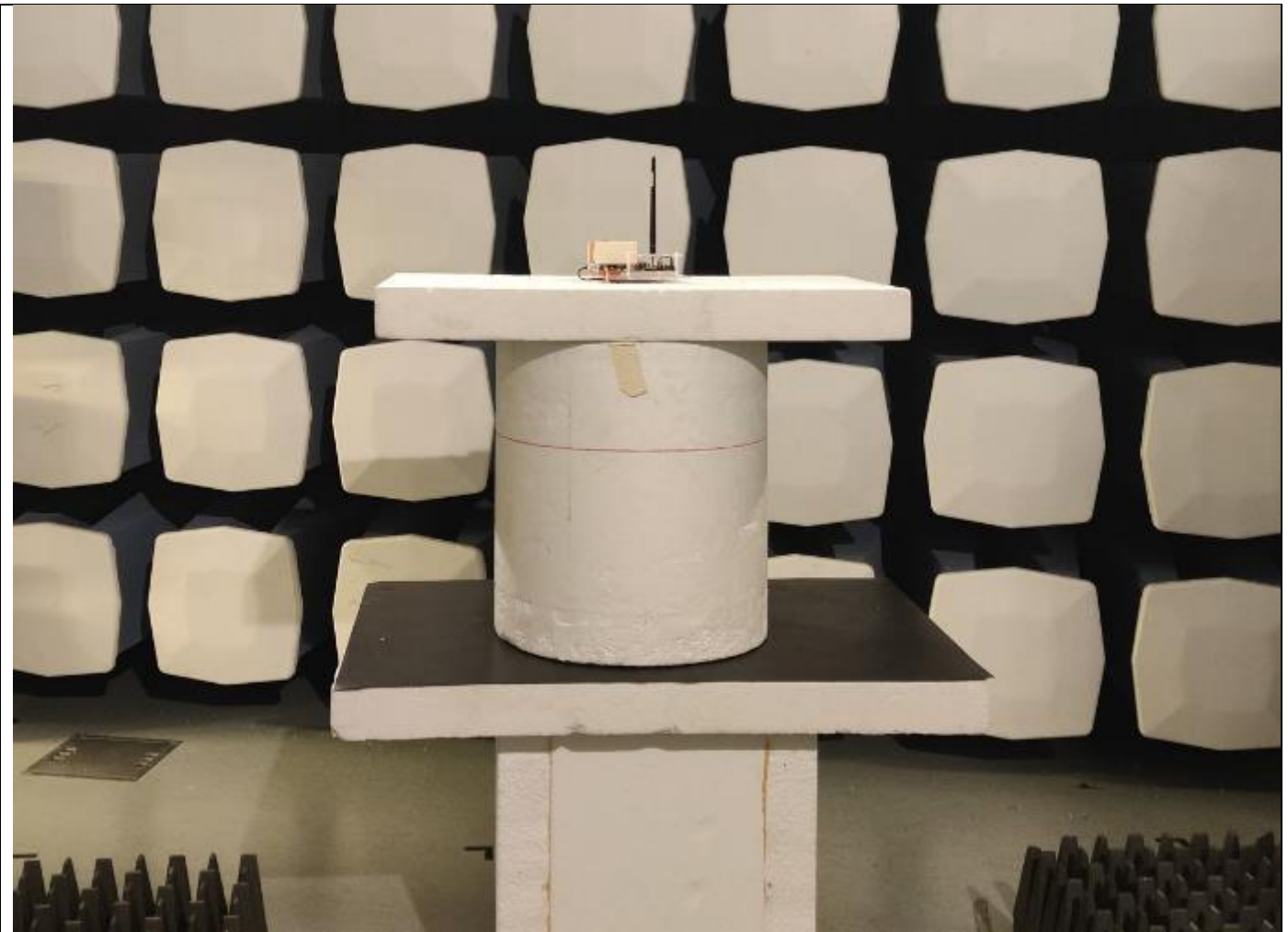
Picture 10, Radiated Spurious Emissions, common setup, TX, 1 – 26 GHz



Picture 11, Radiated Spurious Emissions, common setup, RX, 1 – 12,75 MHz



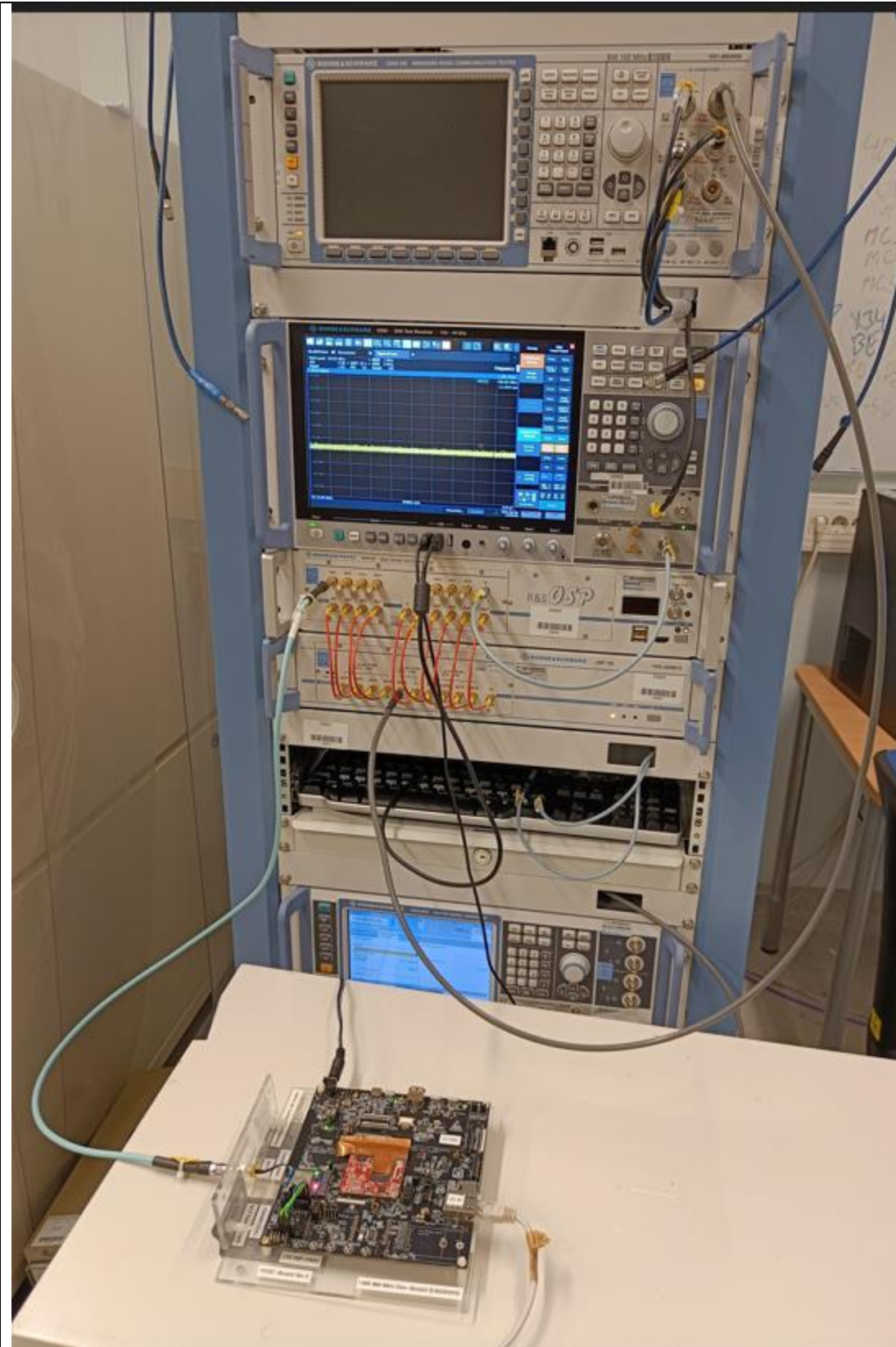
Picture 12, Radiated Spurious Emissions, EUT setup, TX and RX 30 – 1000 MHz



Picture 13, Radiated Spurious Emissions, EUT setup, TX 1 – 26 GHz



Picture 14, Radiated Spurious Emissions, EUT setup, RX 1 – 12,75 GHz



Picture 15, Conducted RF test setup