

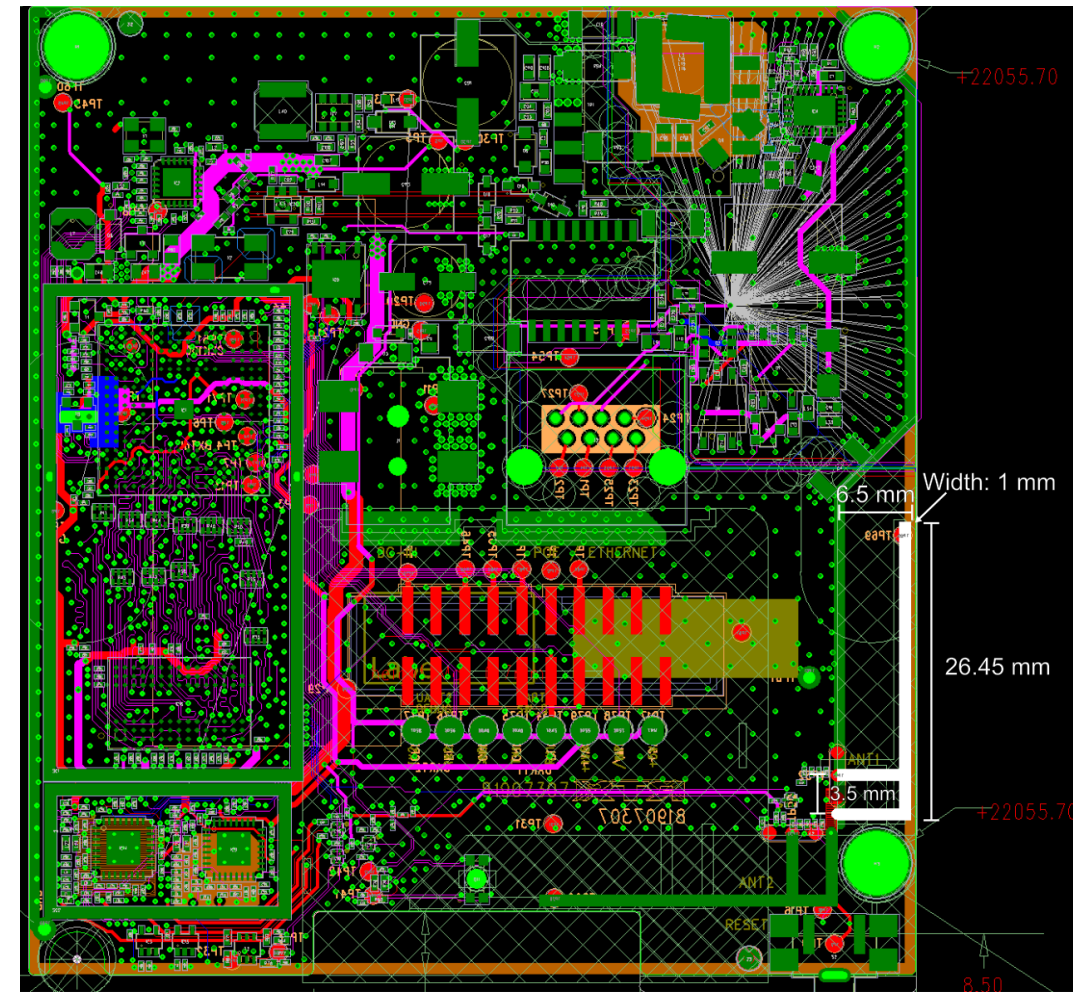
RTX Hong Kong Ltd.
ADD: 8/F Corporation Square,8 Lam Lok Street, Kowloon Bay, Kowloon, Hong Kong

ANTENNA 1

Antenna description:

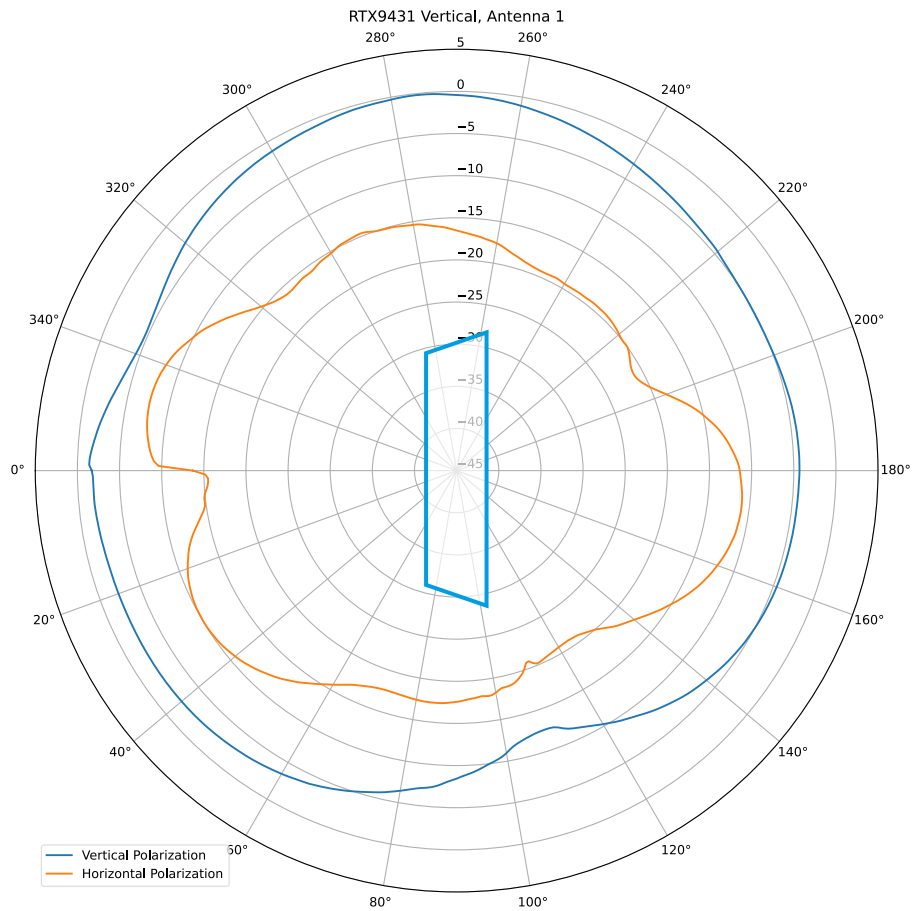
This antenna is an embedded Inverted F-antenna made as part of the PCB on layer 1.
The same antenna shape is used as both antenna 1 and 2.

Description	1.9 GHz PCB Inverted F-antenna
Operation Frequency range	1850-1950 MHz
Maximum Gain	1.0 dBi
Type	Embedded PCB Antenna
Bandwidth	100 MHz
Nominal impedance	50 Ω
Manufacturer	-
Manufacturer address	-
Model number	-

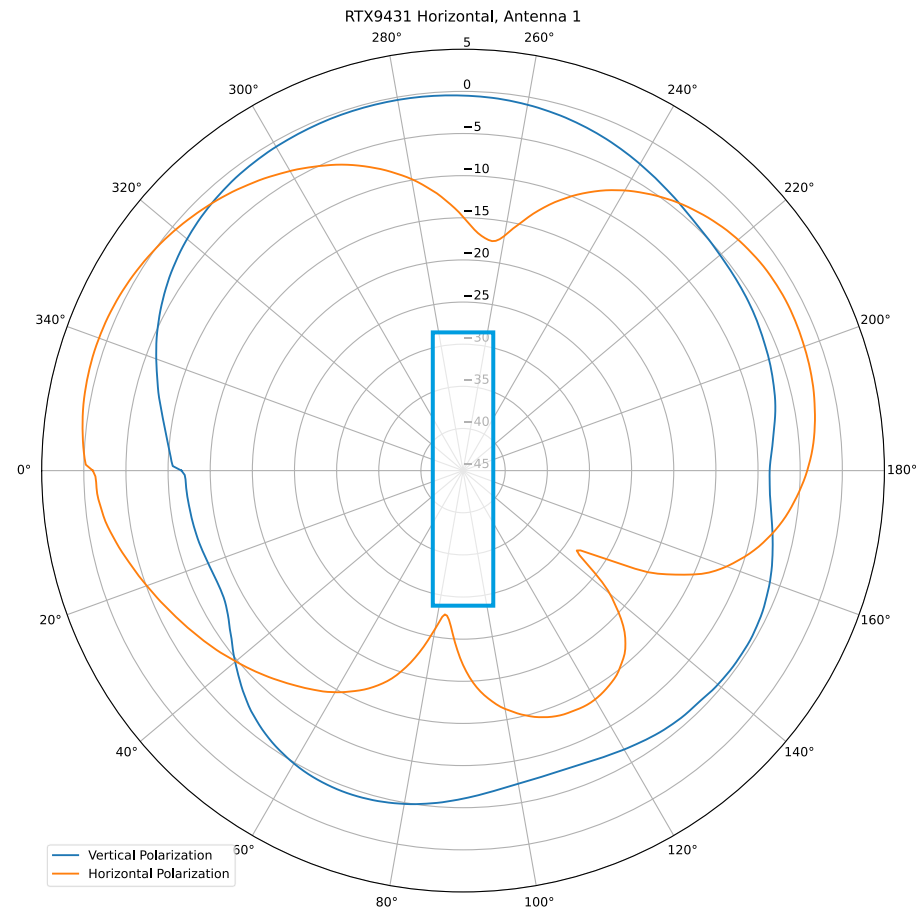


ANTENNA 1 GAIN

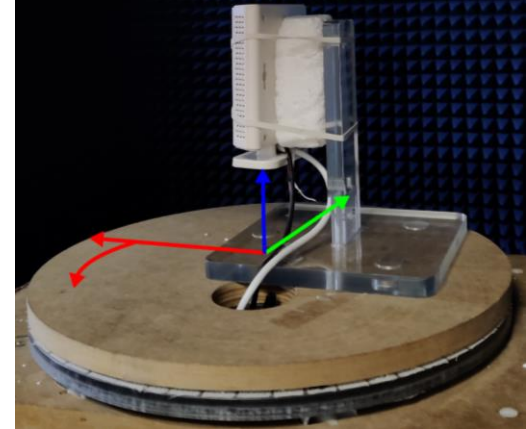
Vertical



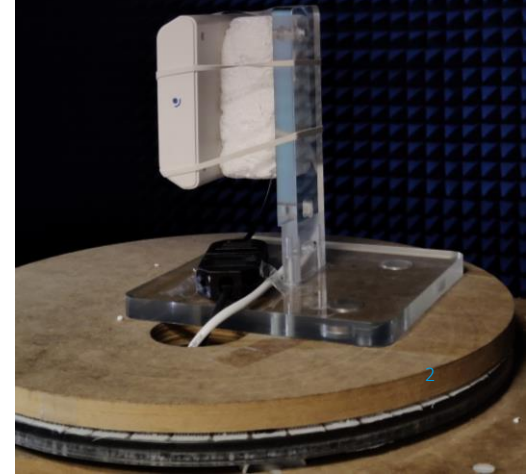
Horizontal



Vertical



Horizontal

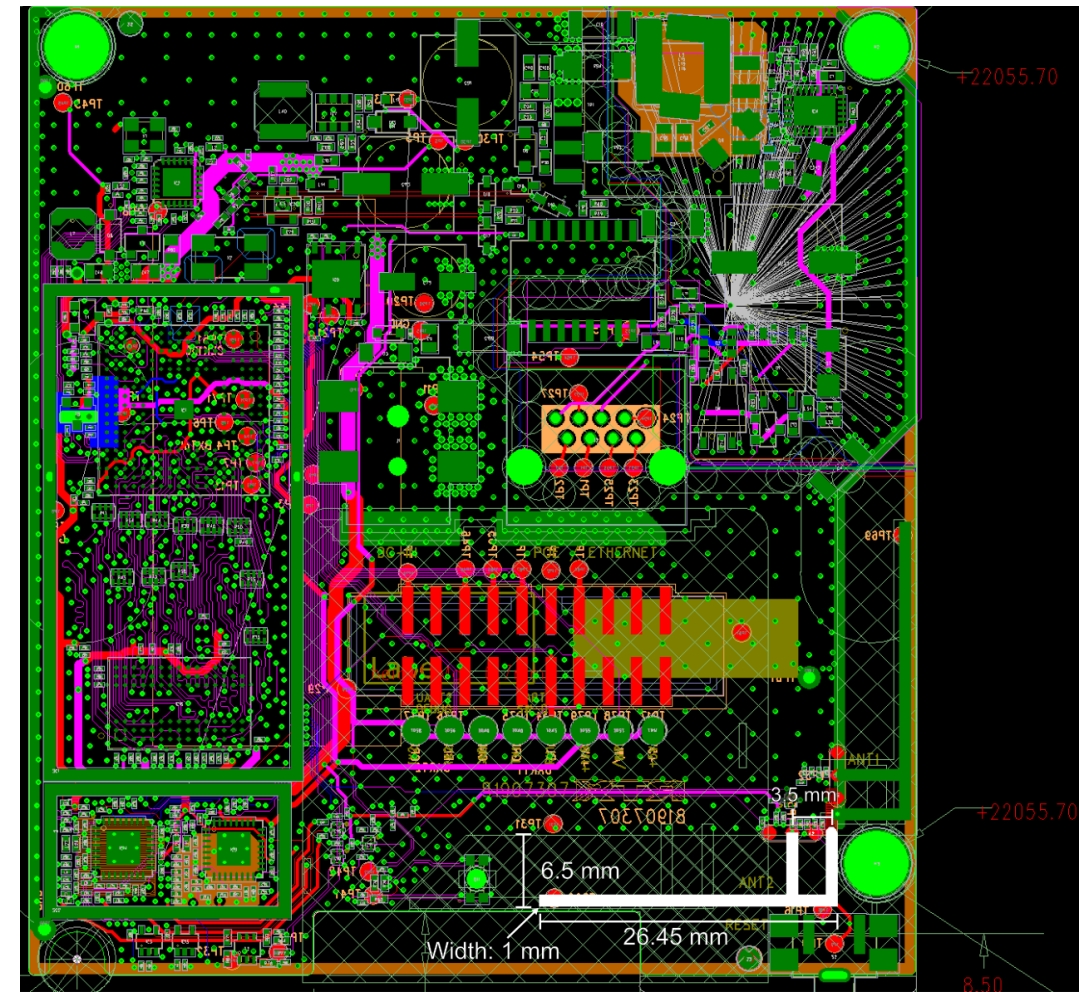


ANTENNA 2

Antenna description:

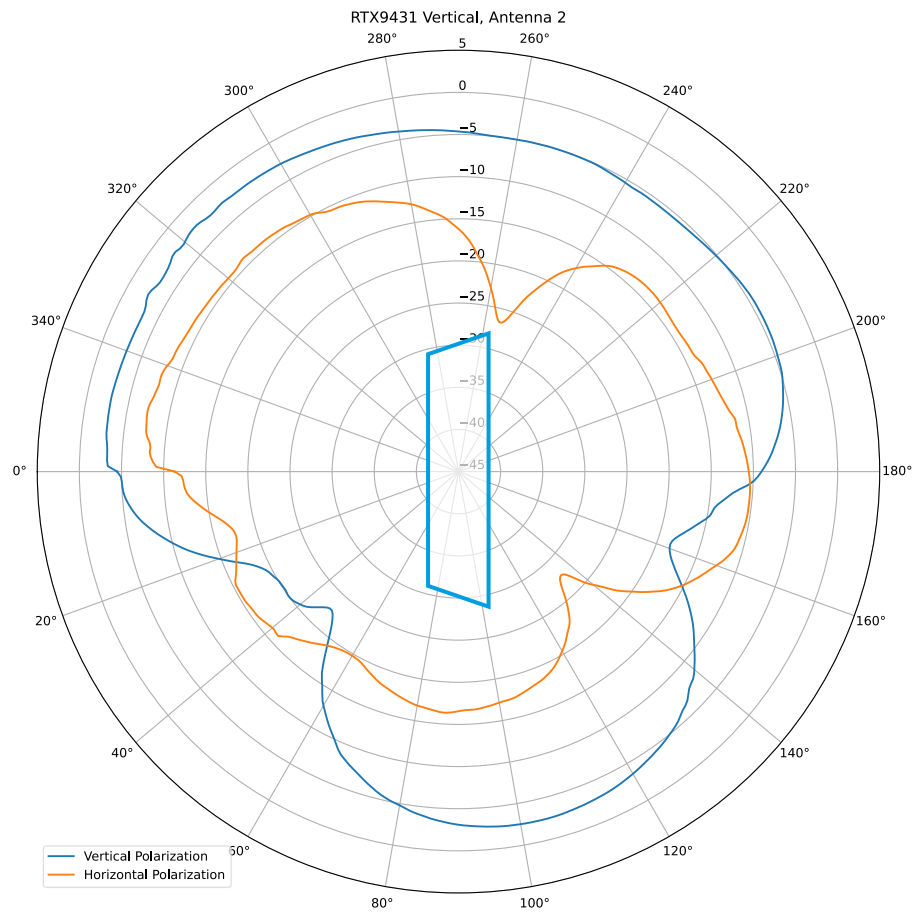
This antenna is an embedded Inverted F-antenna made as part of the PCB on layer 1.
The same antenna shape is used as both antenna 1 and 2.

Description	1.9 GHz PCB Inverted F-antenna
Operation Frequency range	1850-1950 MHz
Maximum Gain	1.0 dBi
Type	Embedded PCB Antenna
Bandwidth	100 MHz
Nominal impedance	50 Ω
Manufacturer	-
Manufacturer address	-
Model number	-

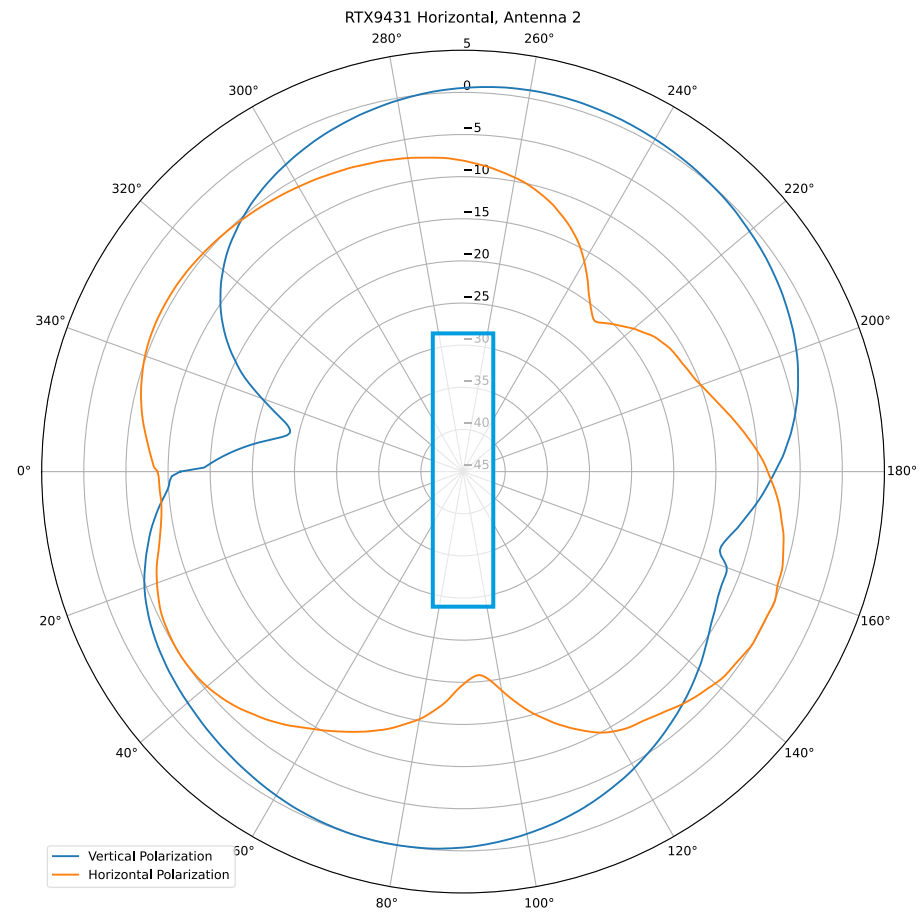


ANTENNA 2 GAIN

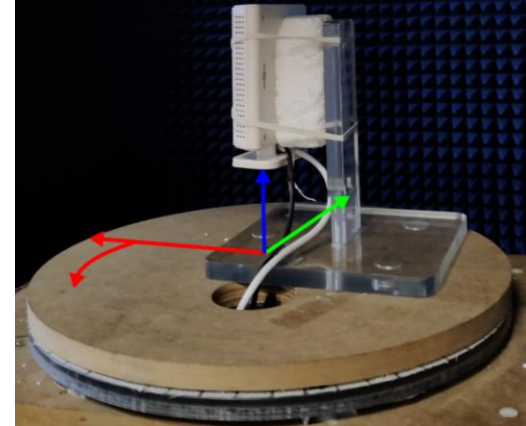
Vertical



Horizontal



Vertical



Horizontal

