

RTX Hong Kong Ltd.

Address: 8/F Corporation Square, 8 Lam Lok Street, Kowloon Bay, Kowloon, Hong Kong

Tel.: +852 2487 3718 Fax: +852 2480 6121

E-mail: TED@rtx.hk

Data: 2018-04-10

FEDERAL COMMUNICATIONS COMMISSIONS

Authorization and Evaluation Division

7435 Oakland Mills Road

Columbia, MD 21046

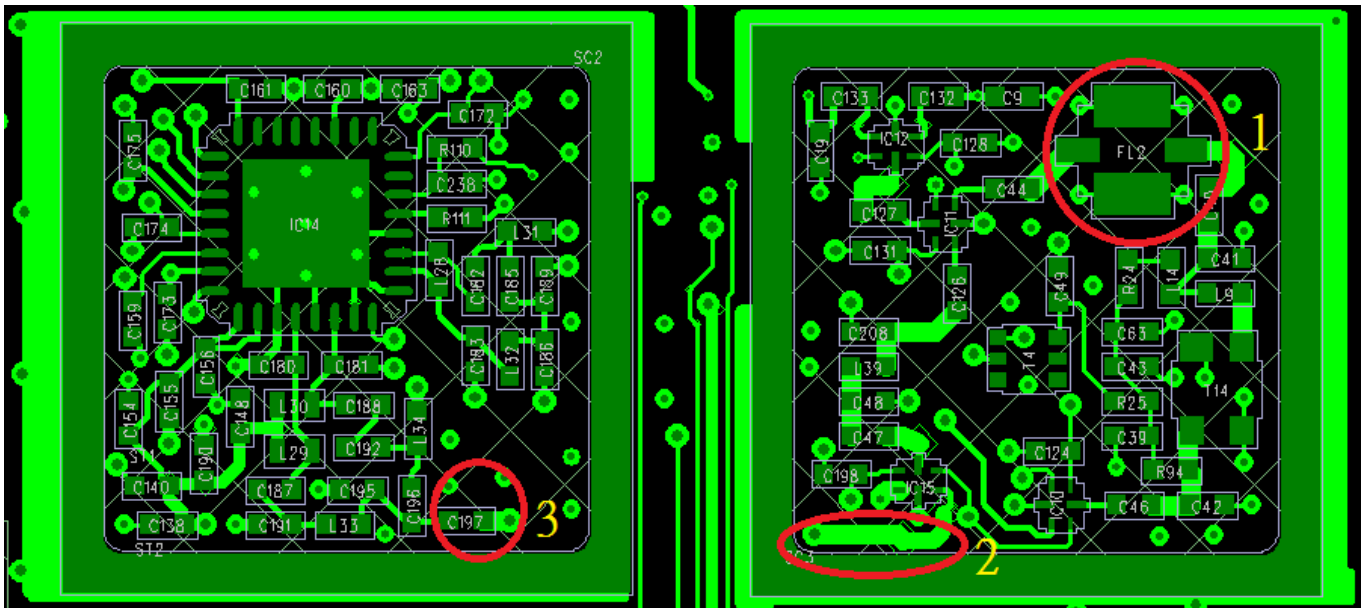
Subject: FCC Class II Permissive change for FCC ID: T7HX8663

Original Grant Date: 08/27/2016

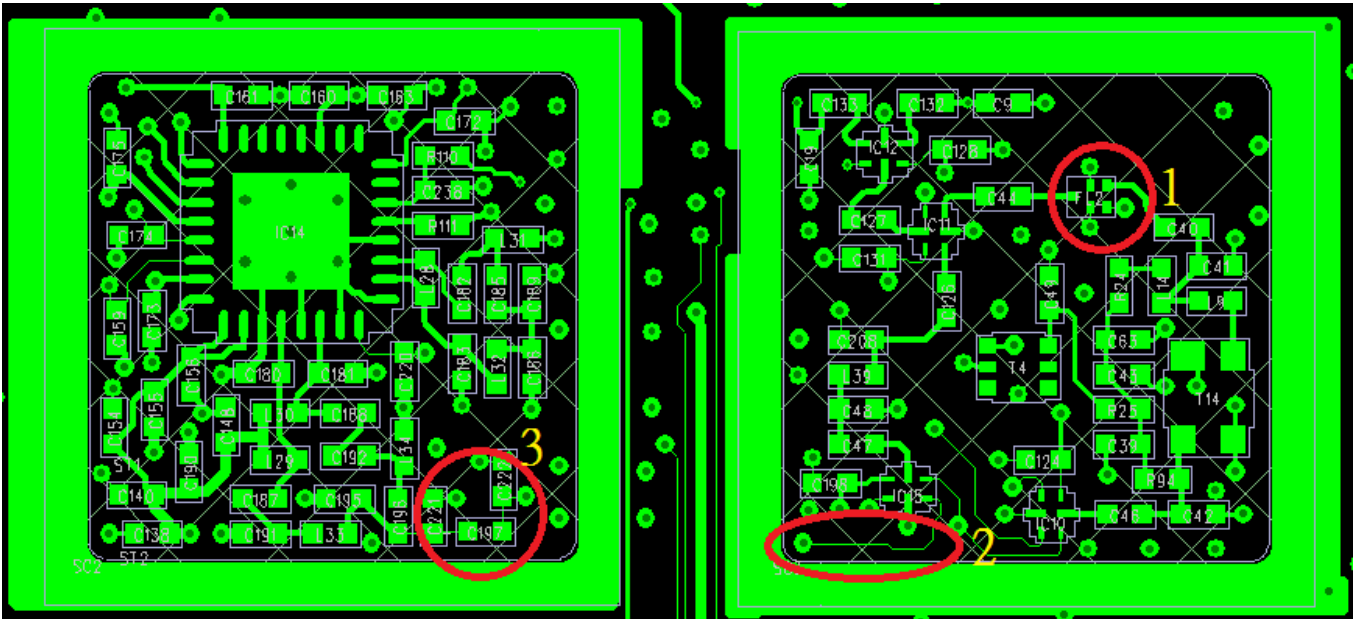
Dear Sir/Madam,

This is to request a Class II permissive change to our product named as Multicell Base, FCC ID: T7HX8663, Model: RTX8663, RTX8663 Ext , 8378 DECT IP-xBS INTEGRATED ANTENNAS, 8378 DECT IP-xBS FOR EXTERNAL ANTENNAS, 8378 DECT IP-xBS OUTDOOR EXTERNAL ANTENNAS the device is identical to the previously certified except for the change as below for detail:

Previous version



New version

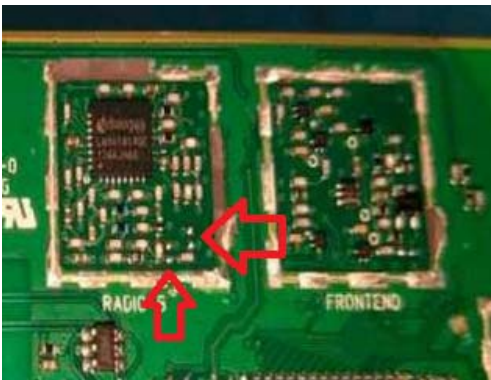


1) The component (FL2) is End of Life. It is not easily ordered in the market. So, it is changed another filter.

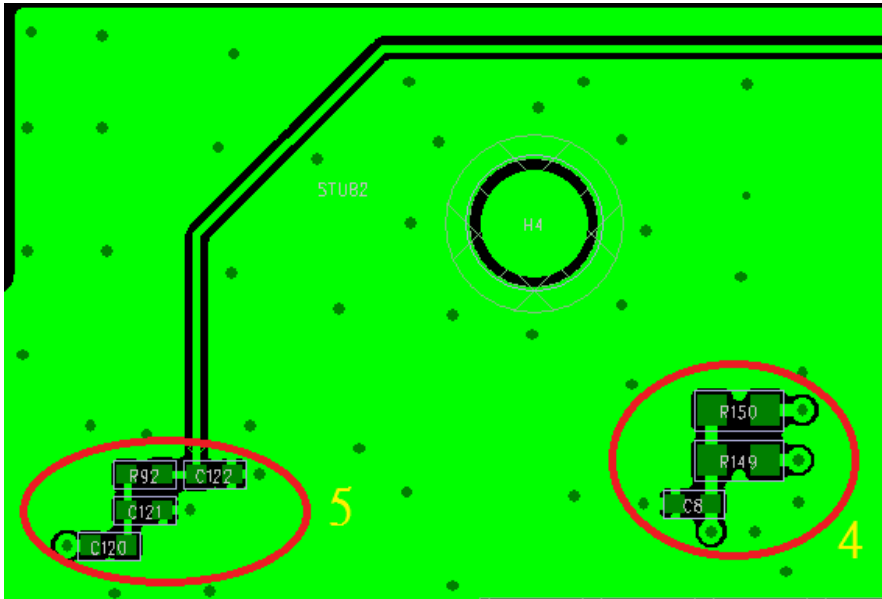
Previous version	BPF for DECT with 2G4 Isolation	Murata	LFB2H1G90SG7C257
New version	BPF for DECT with 2G4 Isolation	Murata	SAFFB1G90KA0F5F

2) It is a PCB track thickness modification. It is an improvement for the components soldering.

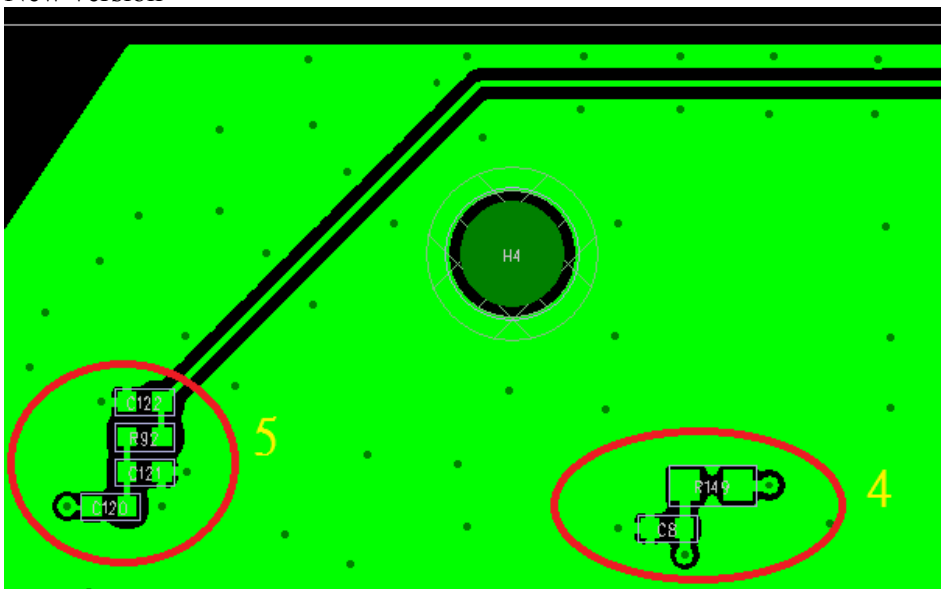
3) It is a π (pi) filter. But, it is not implemented. It is shown in the photos from the report.



Previous version



New version



4) It is related to the Ethernet. It does not affect the RF test. The R150 is not mounted. It is shown in the photos from the report.



5) The circuit is not changed. The C122 moves to another place.

6) adding model: RTX8663 Ext, 8378 DECT IP-xBS INTEGRATED ANTENNAS, 8378 DECT IP-xBS FOR EXTERNAL ANTENNAS, 8378 DECT IP-xBS OUTDOOR EXTERNAL ANTENNAS

7) change product name to Multicell Base

8) add one kind of power supply mode with POE

This authorization is valid until further written notice from the applicant.

Please contact me if you have any questions or need future information regarding this application.

Sincerely Yours,

Signature:

A handwritten signature in black ink, appearing to be 'Ted Chong', written in a cursive style.

Ted Chong

Engineering Manager